

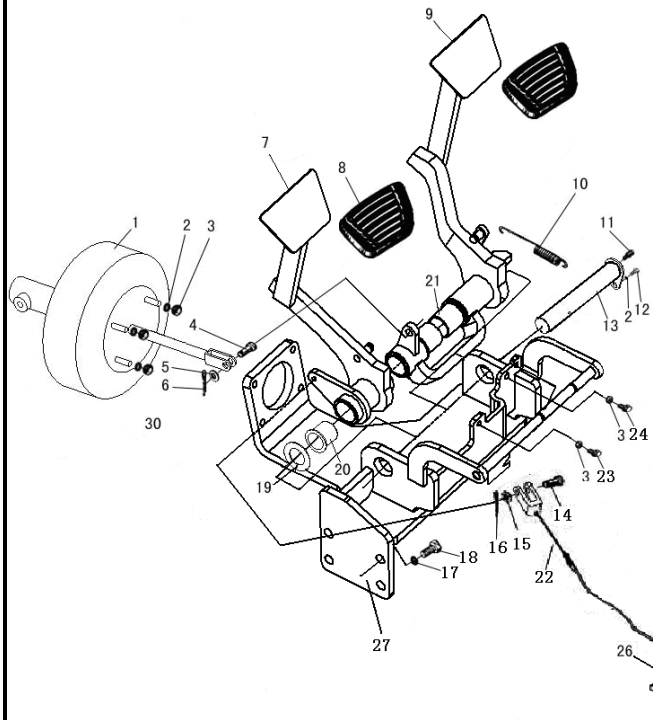
第五部分 操纵系统目录 Part V Control system contents

| | | | |
|-------------------|-------------------------------|--------------------------------|------------------------------|
| Ⓐ CPCD40/45-XRG76 | Ⓑ CPCD50-XRXG76 | Ⓐ ¹ CPC40/45-XRG76 | Ⓑ ¹ CPC50-XRXG76 |
| Ⓒ CPCD40/45-XRG75 | Ⓓ CPCD50-XRXG75 | Ⓒ ¹ CPC40/45-XRG75 | Ⓓ ¹ CPC50-XRXG75 |
| Ⓔ CPCD40/45-XRW34 | Ⓕ CPCD50-XRXW34 | Ⓒ ² CPCD40/45-XRW35 | Ⓕ ¹ CPCD50-XRXW35 |
| Ⓘ CPCD40/45-XRW76 | Ⓙ CPCD50-XRXW76 | Ⓚ CPQYD40/45-XRW57 | Ⓛ CPQYD50-XRXW57 |
| Ⓜ CPCD40/45-XRG73 | Ⓜ ¹ CPC40/45-XRG73 | Ⓝ CPCD50-XRXG73 | Ⓝ ¹ CPC50-XRXG73 |
| Ⓞ CPCD40/45-XRG93 | Ⓞ ¹ CPCD50-XRG93 | | |

| 序号 Item | 名称 Description | 适用车型 Serial No. | 页码 Page |
|-------------------|--|---|------------|
| 图 1 Fig. 1 | 制动微动踏板总成 Brake and inching pedal assy | Ⓐ Ⓑ Ⓒ Ⓓ Ⓜ Ⓝ Ⓞ Ⓟ | 5-1 |
| 图 2 Fig. 2 | 制动微动踏板总成 Brake and inching pedal assy | Ⓔ Ⓕ Ⓒ ² Ⓙ Ⓚ Ⓛ | 5-3 |
| 图 2-A Fig. 2-A | 液压助力制动总成 Hydraulic booster brake assy | Ⓒ ² Ⓙ Ⓚ Ⓛ | 5-6 |
| 图 3 Fig. 3 | 制动离合踏板总成 Brake and clutch pedal assy | Ⓐ ¹ Ⓑ ¹ Ⓒ ¹ Ⓓ ¹ Ⓜ ¹ Ⓝ ¹ 机械叉车 Mechanical forklift | 5-7 |
| 图 4 Fig. 4 | 油门操纵总成 Throttle control assy | 除外 Except Ⓔ Ⓕ Ⓒ ² Ⓙ | 5-9 |
| 图 5 Fig. 5 | 油门操纵总成 Throttle control assy | Ⓔ Ⓕ Ⓒ ² Ⓙ Ⓚ Ⓛ | 5-10 |
| 图 6 Fig. 6 | 手制动操纵总成 Hand brake control assy | 全部车型 All models of truck | 5-12 |
| 图 7 Fig. 7 | 制动油管总成 Brake oil pipe assy | Ⓐ Ⓑ Ⓒ Ⓓ Ⓜ Ⓝ Ⓞ Ⓟ | 5-13 |
| 图 8 Fig. 8 | 制动油管总成 Brake oil pipe assy | Ⓔ Ⓕ Ⓒ ² Ⓙ Ⓚ Ⓛ | 5-14 |

图1 制动微动踏板总成
Fig.1 Brake and inching pedal assy

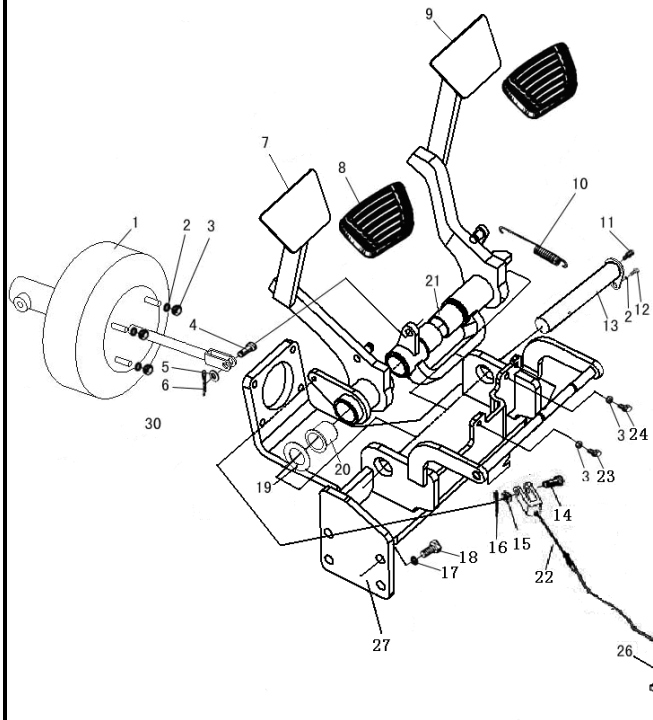
Ⓐ CPCD40/45-XRG76 Ⓑ CPCD50-XRXG76 Ⓒ CPCD40/45-XRG75 Ⓓ CPCD50-XRXG75
Ⓜ CPCD40/45-XRG73 Ⓝ CPCD50-XRXG73 Ⓞ CPCD40/45-XRG93 Ⓟ CPCD50-XRG93



| 序号 Item | 物料码 Part NO. | 名称 Description | 数量 Qty | 备注或适用车型 Remarks Or Serial NO. | 原物料码 Original Part No. |
|------------|-----------------|---|-----------|----------------------------------|---------------------------|
| 1 | 205100340010 | 真空助力器主缸总成 Vacuum booster and cylinder assy | 1 | | A450-501000-000 |
| 2 | 300030010015 | 垫圈8 Washer 8 | 5 | | G000093-000008-00 |
| 3 | 300020010016 | 螺母M8 Nut M8 | 6 | | G006170-000008-00 |
| 4 | 300050040002 | 销轴10×24 Pin 10×24 | 1 | | G000882-010024-01 |
| 5 | 300030040002 | 垫圈10 Washer 10 | 2 | | G0097P1-000010-00 |
| 6 | 205100160013 | 锁销1.8B Pin 1.8B | 1 | | R441-500002-000 |
| 7 | 205100170034 | 微动踏板 Inching pedal | 1 | | R450-516000-000 |
| 8 | 205100180001 | 踏板垫 Pedal pad | 2 | | N163-512001-000 |
| 9 | 205100170188 | 制动踏板 Brake pedal | 1 | | XR460-512000-000 |
| 10 | 205100050015 | 弹簧 Spring | 2 | | R450-510003-000 |
| 11 | 205100370004 | 油杯 Grease cup assy | 1 | | Q701B90-NPT1/16-G00 |
| 12 | 300010040169 | 螺栓M8×16 Bolt M8×16 | 1 | | G005783-008016-00 |
| 13 | 205100430117 | 销轴 Shaft | 1 | | R441-510200-000 |
| 14 | 300050040078 | 销轴B8×25 Pin B8×25 | 2 | | G000882-008025-01 |
| 15 | 300030040014 | 垫圈8 Washer 8 | 4 | | G0097P1-000008-00 |

图.1 制动微动踏板总成
Fig.1 Brake and inching pedal assy

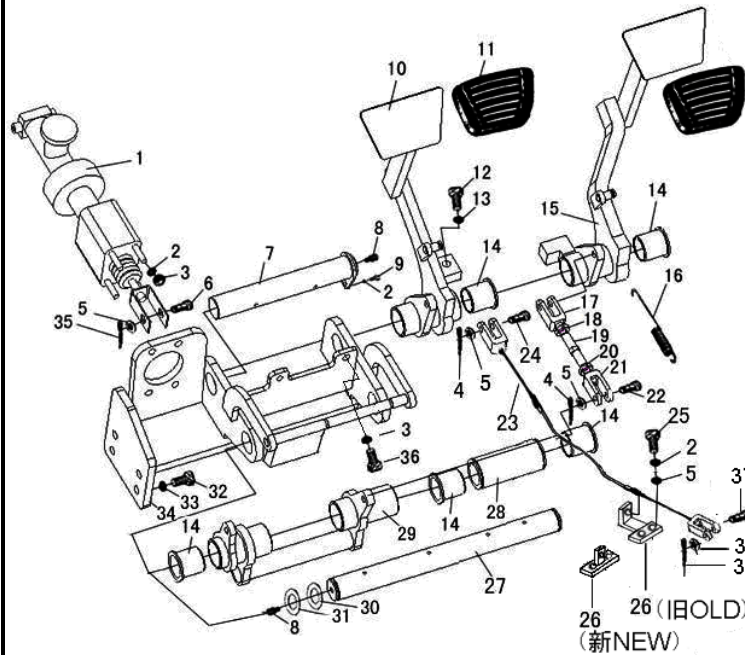
Ⓐ CPCD40/45-XRG76 Ⓑ CPCD50-XRXG76 Ⓒ CPCD40/45-XRG75 Ⓓ CPCD50-XRXG75
Ⓜ CPCD40/45-XRG73 Ⓝ CPCD50-XRXG73



| 序号 Item | 物料码 Part NO. | 名称 Description | 数量 Qty | 备注或适用车型 Remarks Or Serial NO. | 原物料码 Original Part No. |
|------------|-----------------|-----------------------------------|-----------|----------------------------------|---------------------------|
| 16 | 300050010024 | 销3.2×14 Pin 3.2×14 | 2 | | G000091-3P2014-00 |
| 17 | 300030010002 | 垫圈12 Washer 12 | 4 | | G000093-000012-00 |
| 18 | 300010060024 | 螺栓M12×1.25×25 Bolt M12×1.25×25 | 4 | | G005786-012025-00 |
| 19 | 205100090012 | 垫片 Gasket | 1 | | N163-510001-000 |
| 20 | 205100320020 | 套 Bushing | 1 | | R441-510001-000 |
| 21 | 205100320007 | 套 Bushing | 4 | | N163-514001-000 |
| 22 | 205100100057 | 微动软轴 Soft shaft | 1 | | R450-517000-001 |
| 23 | 300010040187 | 螺栓M8×60 Bolt | 1 | | G005783-008060-00 |
| 24 | 300010040183 | 螺栓M8×40 Bolt | 1 | | G005783-008040-00 |
| 25 | 300010040173 | 螺栓M8×20 Bolt | 1 | | G005783-008020-00 |
| 26 | 205100020296 | 支架 Bracket | 1 | | R450-519000-001 |
| 27 | 205100080038 | 底座 Pedestal | 1 | | XR460-511000-000 |
| | | | | | |
| | | | | | |
| | | | | | |

图.2 制动微动踏板总成
Fig.2 Brake and inching pedal assy

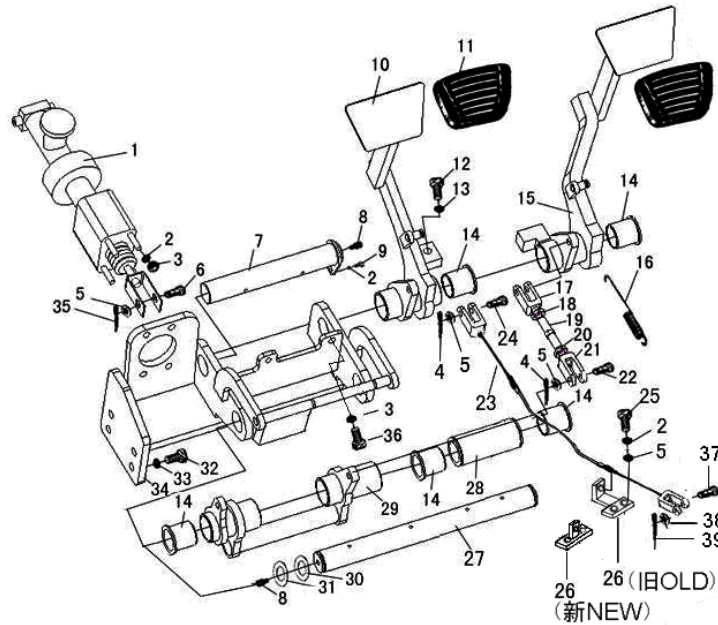
Ⓔ CPCD40/45-XRW34 Ⓕ CPCD50-XRXW34 Ⓖ CPCD40/45-XRW35 Ⓗ CPCD50-XRXW35
Ⓘ CPCD40/45-XRW76 Ⓙ CPCD50-XRXW76 Ⓚ CPQYD40/45-XRW57 Ⓛ CPQYD50-XRXW57



| 序号 Item | 物料码 Part No. | 名称 Description | 数量 Qty | 备注或适用车型 Remarks or Serial No. | 原物料码 Original Part No. |
|------------|-----------------|--|-----------|----------------------------------|---------------------------|
| 1 | 205100340019 | 液压助力制动总成 Hydraulic booster brake assy | 1 | 见图 2-A See Fig. 2-A | XR463-511000-000 |
| 2 | 300030010015 | 垫圈 8 Washer 8 | 7 | | G000093-000008-00 |
| 3 | 300020010016 | 螺母 M8 Nut M8 | 6 | | G006170-000008-00 |
| 4 | 300050010024 | 销 3.2×14 Pin 3.2×14 | 4 | | G000091-3P2014-00 |
| 5 | 300030040014 | 垫圈 8 Washer 8 | 7 | | G0097P1-000008-00 |
| 6 | 300050040040 | 销轴 B8×28 Pin B8×28 | 1 | | G000882-008028-01 |
| 7 | 205100430115 | 销轴 Pin | 1 | | R450-510200-000 |
| 8 | 205100370004 | 油杯 Grease cup assy | 3 | | Q701B90-NPT1/16-G00 |
| 9 | 300010040169 | 螺栓 M8×16 Bolt M8×16 | 1 | | G005783-008016-00 |
| 10 | 205100170034 | 微动踏板 Inching pedal | 1 | | R450-516000-000 |
| 11 | 205100180001 | 踏板垫 Pedal pad | 2 | | N163-512001-000 |
| 12 | 310010010032 | 螺栓 Bolt | 1 | | N163-510002-000 |
| 13 | 300020010006 | 螺母 M10 Nut M10 | 1 | | G006170-000010-00 |
| 14 | 205100320007 | 套 Bushing | 10 | | N163-514001-000 |
| 15 | 205100170045 | 制动踏板 Brake pedal | 1 | | R450-515000-000 |

图.2 制动微动踏板总成
Fig.2 Brake and inching pedal assy

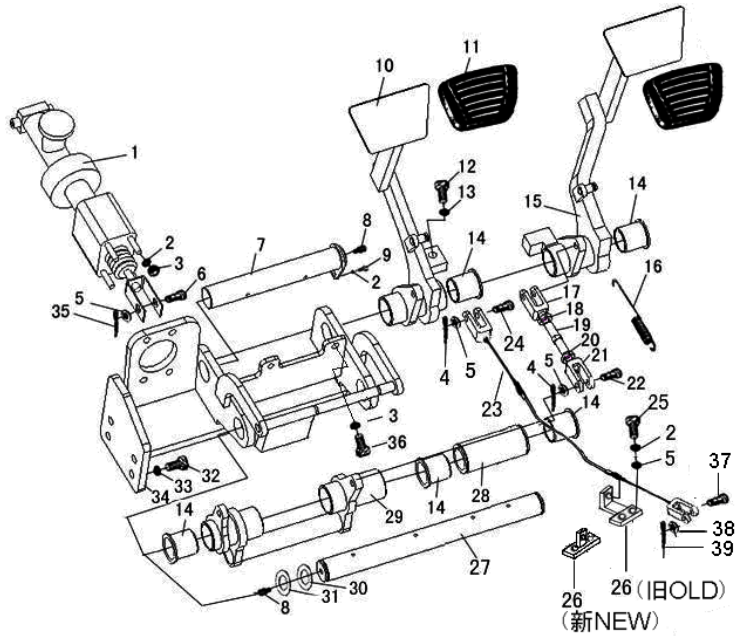
Ⓔ CPCD40/45-XRW34 Ⓕ CPCD50-XRXW34 Ⓖ CPCD40/45-XRW35 Ⓖ CPCD50-XRXW35
Ⓖ CPCD40/45-XRW76 Ⓖ CPCD50-XRXW76 Ⓖ CPQYD40/45-XRW57 Ⓖ CPQYD50-XRXW57



| 序号 Item | 物料码 Part No. | 名称 Description | 数量 Qty | 备注或适用车型 Remarks or Serial No. | 原物料码 Original Part No. |
|------------|-----------------|------------------------|-----------|----------------------------------|---------------------------|
| 16 | 205100050013 | 弹簧 Spring | 2 | | N163-510003-000 |
| 17 | 205100030013 | 下连杆叉头 Yoke | 1 | | G160-510001-000 |
| 18 | 300020300013 | 螺母 M10-左旋 Nut | 1 | | G006172-100010-00 |
| 19 | 205100130005 | 杆 Rod | 1 | | R450-510101-000 |
| 20 | 300020300002 | 螺母 M10 Nut M10 | 1 | | G006172-000010-00 |
| 21 | 205100030011 | 上连杆叉头 Yoke | 1 | | G160-510003-000 |
| 22 | 300050040056 | 销轴 B8x30 Pin B8x30 | 2 | | G000882-008030-01 |
| 23 | 205100100057 | 微动软轴 Soft shaft | 1 | | R450-517000-001 |
| 24 | 300050040078 | 销轴 B8x25 Pin B8x25 | 1 | | G000882-008025-01 |
| 25 | 300010040173 | 螺栓M8x20 Bolt M8x20 | 2 | | G005783-008020-00 |
| 26 | 205100020296 | 支架 Stent | 1 | | R450-519000-001 |
| 27 | 205100430088 | 轴 Shaft | 1 | | R450-510005-001 |
| 28 | 205100010005 | 隔套 Bushing | 1 | | R450-510004-001 |
| 29 | 205100130033 | 制动连杆 Connecting set | 1 | | R450-511000-000 |
| 30 | 205100090013 | 垫片 Gasket | 2 | | N163-510004-000 |

图2 制动微动踏板总成
Fig.2 Brake and inching pedal assy

Ⓔ CPCD40/45-XRW34 Ⓕ CPCD50-XRXW34 Ⓖ CPCD40/45-XRW35 Ⓗ CPCD50-XRXW35
Ⓘ CPCD40/45-XRW76 Ⓖ CPCD50-XRXW76 Ⓚ CPQYD40/45-XRW57 Ⓛ CPQYD50-XRXW57



| 序号 Item | 物料码 Part No. | 名称 Description | 数量 Qty | 备注或适用车型 Remarks or Serial No. | 原物料码 Original Part No. |
|------------|-----------------|-----------------------|-----------|----------------------------------|---------------------------|
| 31 | 300060030013 | 挡圈28 Snap ring | 2 | | G0894P1-000028-00 |
| 32 | 300010060024 | 螺栓M12×1.25×25 Bolt | 4 | | G005786-012025-00 |
| 33 | 300030010002 | 垫圈12 Washer | 4 | | G000093-000012-00 |
| 34 | 205100080028 | 底座 Bracket | 1 | | R450-518000-001 |
| 35 | 205100160010 | 锁销 1.6B Pin 1.6B | 1 | | N163-513002-000 |
| 36 | 300010040180 | 螺栓M8×35 Bolt M8×35 | 2 | | G005783-008035-00 |
| 37 | 300050040028 | 销轴 B6×20 Pin | 1 | | G000882-006020-01 |
| 38 | 300030040013 | 垫圈 6 Washer 6 | 1 | | G0097P1-000006-00 |
| 39 | 300050010015 | 销 2×12 Pin 2×12 | 1 | | G000091-002012-00 |
| | | | | | |
| | | | | | |
| | | | | | |
| | | | | | |
| | | | | | |
| | | | | | |
| | | | | | |
| | | | | | |
| | | | | | |

图 2-A 液压助力制动总成
Fig.2-A Hydraulic booster brake assy

Ⓔ CPCD40/45-XRW34 Ⓕ CPCD50-XRXW34 Ⓖ CPCD40/45-XRW35 Ⓖ CPCD50-XRXW35
Ⓖ CPCD40/45-XRW76 Ⓖ CPCD50-XRXW76 Ⓖ CPQYD40/45-XRW57 Ⓖ CPQYD50-XRXW57

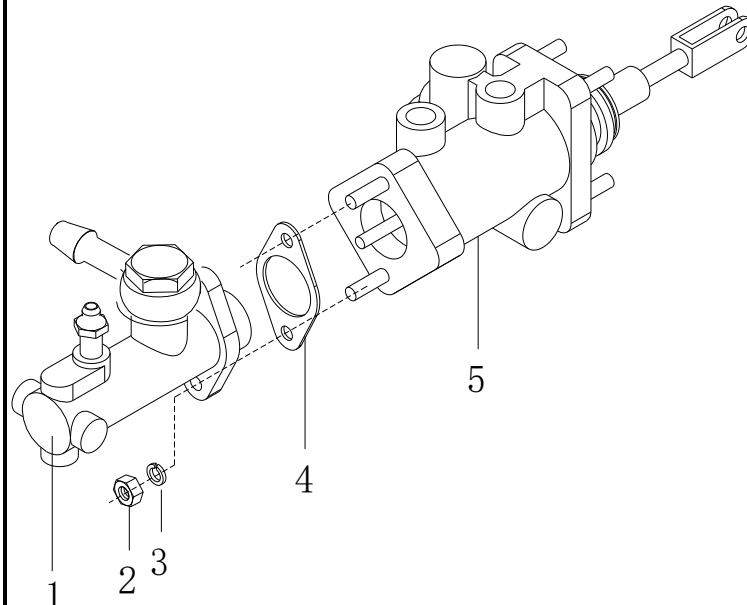
| | 序号 Item | 物料码 Part No. | 名称 Description | 数量 Qty | 备注或适用车型 Remarks or Serial No. | 原物料码 Original Part No. |
|--|--------------|---------------------------|--|-----------|----------------------------------|---------------------------|
|  | A1 | 205100340019 | 液压助力制动总成 Hydraulic booster brake assy | 1 | 包含/INC:1-5 | XR463-511000-000 |
| | 1 | 205100300050 | 制动总泵 Brake master cylinder assy | 1 | | XR463-511100-000 |
| | 2 | 300020010016 | 螺母M8 Nut M8 | 2 | | G006170-000008-00 |
| | 3 | 300030010015 | 垫圈8 Washer 8 | 2 | | G000093-000008-00 |
| | 4 | 201100040051 | 垫片 Shim | 1 | | HBB-L25E-18A-G00 |
| 5 | 209990000633 | 液压助力器 Booster cylinder | 1 | | HBB-L25E-4T-G00 | |
| | | | | | | |
| | | | | | | |
| | | | | | | |
| | | | | | | |
| | | | | | | |
| | | | | | | |
| | | | | | | |
| | | | | | | |

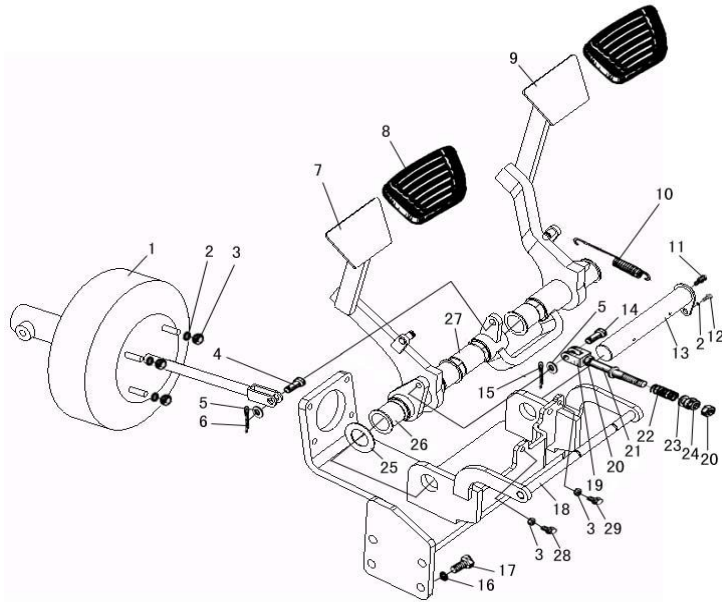
图3 制动离合踏板总成
Fig.3 Brake and clutch pedal assy

Ⓐ1 CPC40/45-XRG76
Ⓒ1 CPC40/45-XRG75

Ⓑ1 CPC50-XRXG76
Ⓓ1 CPC50-XRXG75

Ⓜ1 CPC40/45-XRG73
Ⓝ1 CPC50-XRXG73

机械叉车
Mechanical forklift



| 序号 Item | 物料码 Part No. | 名称 Description | 数量 Qty | 备注或适用车型 Remarks or Serial No. | 原物料码 Original Part No. |
|------------|-----------------|---|-----------|----------------------------------|---------------------------|
| 1 | 205100340010 | 真空助力器主缸总成 Vacuum booster and cylinder assy | 1 | | A450-501000-000 |
| 2 | 300030010015 | 垫圈8 Washer | 5 | | G000093-000008-00 |
| 3 | 300020010016 | 螺母M8 Nut | 6 | | G006170-000008-00 |
| 4 | 300050040002 | 销轴B10×24 Pin | 1 | | G000882-010024-01 |
| 5 | 300030040002 | 垫圈10 Washer | 2 | | G0097P1-000010-00 |
| 6 | 205100160013 | 锁销1.8B Pin | 1 | | R441-500002-000 |
| 7 | 205100170024 | 离合踏板 Clutch pedal | 1 | <2018-12-26 4.0t-4.5t | R441-513000-000 |
| 7 | 205100260148 | 离合踏板 Clutch pedal | 1 | ≥2018-12-26 4.0t-4.5t | XR452-511000-000 |
| 7 | 205100170027 | 离合踏板 Clutch pedal | 1 | X5t | RS450-531000-000 |
| 8 | 205100180001 | 踏板垫 Pedal pad | 2 | | N163-512001-000 |
| 9 | 205100170047 | 制动踏板 Brake pedal | 1 | | R441-512000-000 |
| 10 | 205100050015 | 弹簧 Spring | 2 | | R450-510003-000 |
| 11 | 205100370004 | 油杯 Grease cup assy | 1 | | Q701B90-NPT1/16-G00 |
| 12 | 300010040169 | 螺栓M8×16 Bolt | 1 | | G005783-008016-00 |
| 13 | 205100430117 | 销轴 Shaft | 1 | | R441-510200-000 |

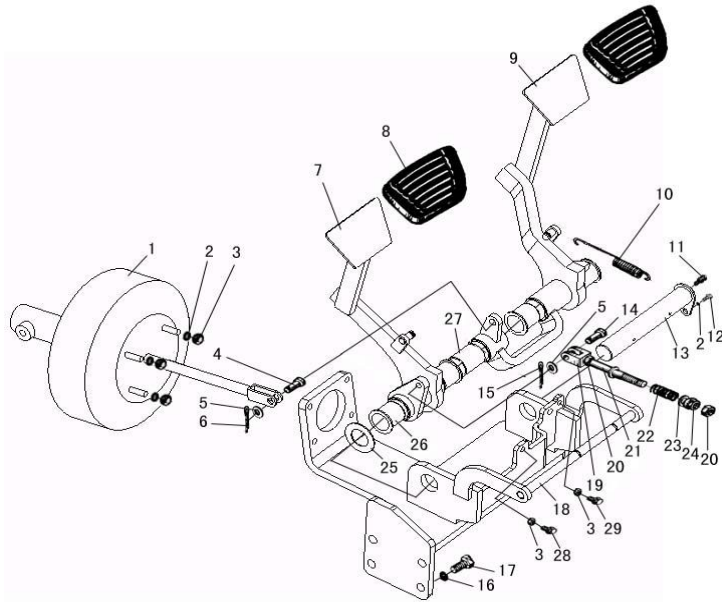
图3 制动离合踏板总成
Fig.3 Brake and clutch pedal assy

Ⓐ1 CPC40/45-XRG76
Ⓒ1 CPC40/45-XRG75

Ⓑ1 CPC50-XRXG76
Ⓓ1 CPC50-XRXG75

Ⓜ1 CPC40/45-XRG73
Ⓝ1 CPC50-XRXG73

机械叉车
Mechanical forklift



| 序号 Item | 物料码 Part No. | 名称 Description | 数量 Qty | 备注或适用车型 Remarks or Serial No. | 原物料码 Original Part No. |
|------------|-----------------|-----------------------|-----------|----------------------------------|---------------------------|
| 14 | 300050040019 | 销轴B10×32 Pin | 1 | | G000882-010032-01 |
| 15 | 300050010030 | 销3.2×25 Pin | 1 | | G000091-3P2025-00 |
| 16 | 300030010002 | 垫圈12 Washer | 4 | | G000093-000012-00 |
| 17 | 300010060024 | 螺栓M12×1.25×25 Bolt | 4 | | G005786-012025-00 |
| 18 | 205100080011 | 底座 Bracket | 1 | | R441-511000-000 |
| 19 | 205100030002 | 叉头 Yoke | 1 | | N150-510001-000 |
| 20 | 300020020002 | 螺母M10×1 Nut | 2 | | G006171-000010-00 |
| 21 | 205100130019 | 拉杆 Rod | 1 | | R441-510100-000 |
| 22 | 205100050019 | 压缩弹簧 Spring | 1 | | N150-511002-000 |
| 23 | 300030020009 | 垫圈10 Washer | 1 | | G000095-000010-00 |
| 24 | 310020050009 | 球形螺母 Spherical nut | 1 | | N150-511001-000 |
| 25 | 205100090012 | 垫片 Gasket | 1 | | N163-510001-000 |
| 26 | 205100320020 | 套 Bushing | 1 | | R441-510001-000 |
| 27 | 205100320007 | 套 Bushing | 4 | | N163-514001-000 |
| 28 | 300010040187 | 螺栓M8×60 Bolt | 1 | | G005783-008060-00 |

图5 油门操纵总成
Fig.5 Throttle control assy

Ⓔ CPCD40/45-XRW34 Ⓕ CPCD50-XRXW34 Ⓖ CPCD40/45-XRW35 Ⓗ CPCD50-XRXW35
Ⓖ CPCD40/45-XRW76 Ⓙ CPCD50-XRXW76

| 序号 Item | 物料码 Part NO. | 名称 Description | 数量 Qty | 备注或适用车型 Remarks or Serial NO. | 原物料码 Original Part No. |
|------------|-----------------|-----------------------------|-----------|----------------------------------|---------------------------|
| 1 | 205200080017 | 油门踏板 Throttle pedal | 1 | | XF250-520001-000 |
| 2 | 300060060004 | 挡圈 6 Snap ring 6 | 1 | | G000896-000006-00 |
| 3 | 205200180014 | 支架 Support | 1 | | XF250-520005-000 |
| 4 | 300010040148 | 螺栓 M6×16 Bolt M6×16 | 2 | | G005783-006016-00 |
| 5 | 300030010014 | 垫圈 6 Washer 6 | 6 | Ⓔ Ⓕ Ⓖ Ⓗ | G000093-000006-00 |
| 5 | 300030010014 | 垫圈 6 Washer 6 | 3 | Ⓖ Ⓙ | G000093-000006-00 |
| 6 | 205200200021 | 销轴 Shaft | 1 | | XF250-520002-000 |
| 7 | 300010040169 | 螺栓 M8×16 Bolt M8×16 | 2 | | G005783-008016-00 |
| 8 | 300030010015 | 垫圈 8 Washer 8 | 2 | | G000093-000008-00 |
| 9 | 300050040027 | 销轴 B6×16 Pin shaft B6×16 | 1 | | G000882-006016-01 |
| 10 | 300050010015 | 销 2×12 Pin 2×12 | 1 | | G000091-002012-00 |
| 11 | 205200050009 | 连杆 Rod | 1 | | XF250-521000-000 |
| 12 | 205200110005 | 限位螺栓 Thrust bolt | 1 | | XR463-520001-000 |
| 13 | 300020010016 | 螺母 M8 Nut M8 | 1 | | G006170-000008-00 |
| 14 | 300020010005 | 螺母 M6 Nut M6 | 5 | Ⓔ Ⓕ Ⓖ Ⓗ | G006170-000006-00 |

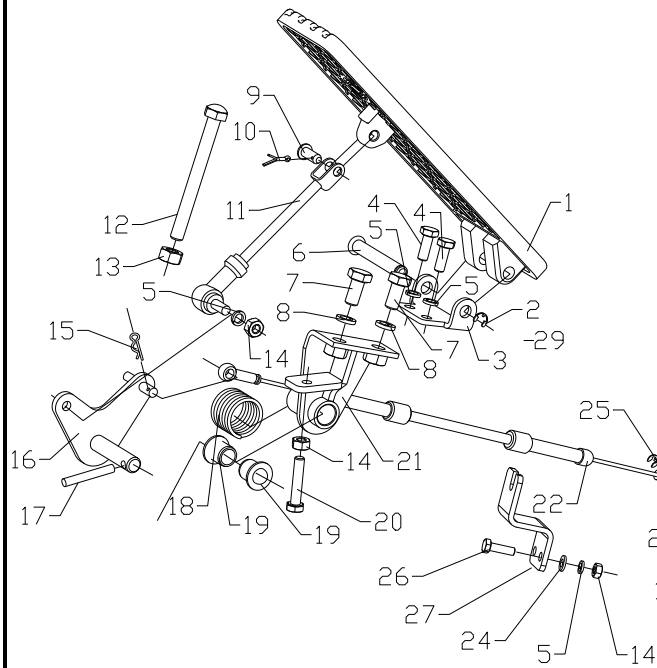
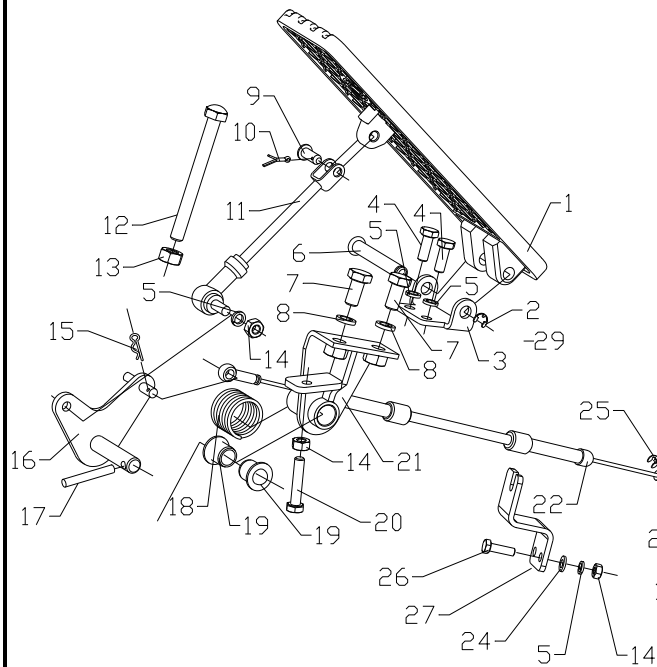


图5 油门操纵总成
Fig.5 Throttle control assy

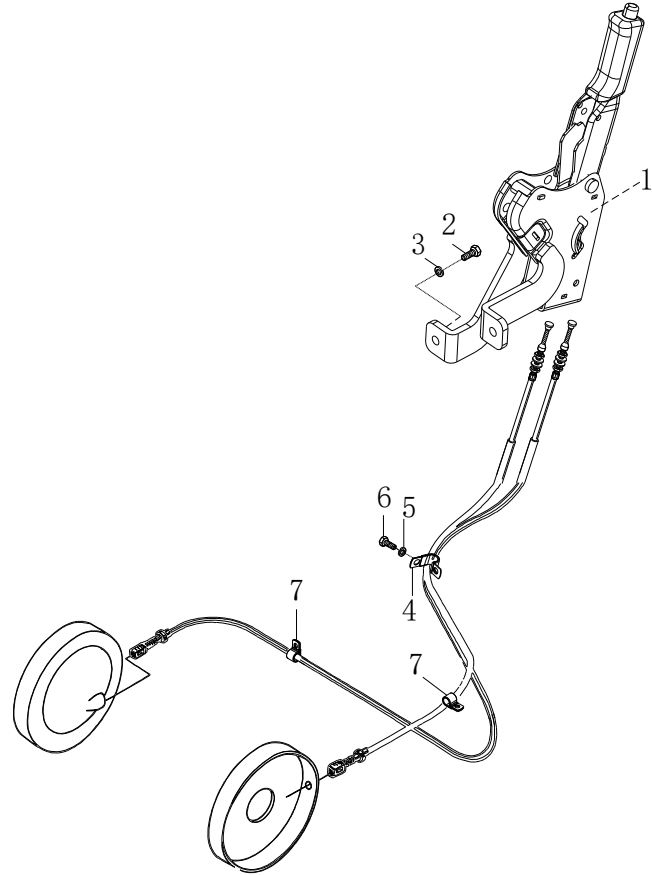
Ⓔ CPCD40/45-XRW34 Ⓕ CPCD50-XRXW34 Ⓖ CPCD40/45-XRW35 Ⓗ CPCD50-XRXW35
Ⓘ CPCD40/45-XRW76 Ⓙ CPCD50-XRXW76



| 序号 Item | 物料码 Part NO. | 名称 Description | 数量 Qty | 备注或适用车型 Remarks Or Serial NO. | 原物料码 Original Part No. |
|------------|-----------------|-----------------------------|-----------|----------------------------------|---------------------------|
| 14 | 300020010005 | 螺母 M6 Nut M6 | 2 | Ⓘ Ⓙ | G006170-000006-00 |
| 15 | 205200070001 | 锁销 6 Pin 6 | 1 | | XF250-520006-G00 |
| 16 | 205200120010 | 摇臂 Rod arm | 1 | | XF250-524000-000 |
| 17 | 300050090025 | 销 5×40 Pin 5×40 | 1 | | G000879-005040-00 |
| 18 | 205200060002 | 扭簧 Spring | 1 | | XF250-520004-000 |
| 19 | 205200010002 | 衬套 Bushing | 2 | | XF250-520003-000 |
| 20 | 300010040155 | 螺栓 M6×30 Bolt M6×30 | 1 | | G005783-006030-00 |
| 21 | 205200020126 | 支架 Support | 1 | | XR312-522000-000 |
| 22 | 205200140034 | 油门拉线 Throttle line | 1 | Ⓔ Ⓕ Ⓖ Ⓗ | XF250-523000-000 |
| 22 | 205200140039 | 油门拉线 Throttle line | 1 | Ⓘ Ⓙ | XM251-521000-000 |
| 23 | 205200040012 | 拉线挂销 Pin | 1 | Ⓔ Ⓕ Ⓖ Ⓗ | GR501-520001-000 |
| 24 | 300030040013 | 垫圈 6 Washer 6 | 4 | Ⓔ Ⓕ Ⓖ Ⓗ | G0097P1-000006-00 |
| 25 | 300060060007 | 挡圈 4 Snap ring 4 | 1 | Ⓔ Ⓕ Ⓖ Ⓗ | G000896-000004-00 |
| 26 | 300010040151 | 螺栓 M6×20 Bolt M6×20 | 2 | Ⓔ Ⓕ Ⓖ Ⓗ | G005783-006020-00 |
| 27 | 205200180009 | 油门支架 Accelerator bracket | 1 | Ⓔ Ⓕ Ⓖ Ⓗ | R457-520001-000 |

图 6 手制动操纵总成
Fig.6 Hand brake control assy

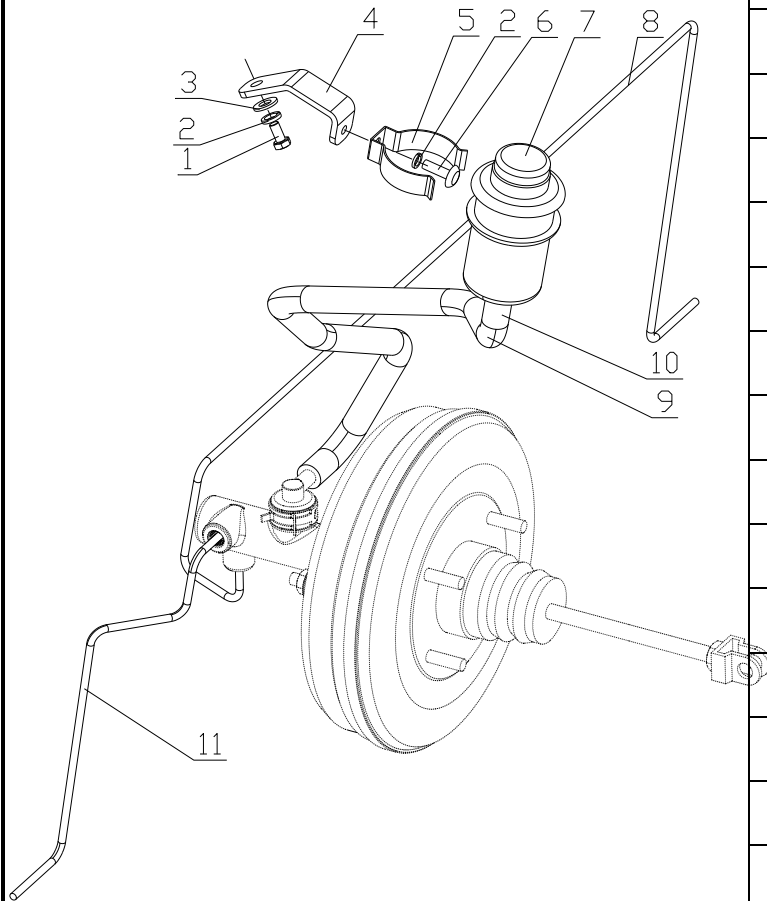
全部车型
All models of truck



| 序号 Item | 物料码 Part NO. | 名称 Description | 数量 Qty | 备注或适用车型 Remarks or Serial NO. | 原物料码 Original Part No. |
|------------|-----------------|---|-----------|----------------------------------|---------------------------|
| 1 | 205500020015 | 驻车制动器总成 Device assy-parking brake control | 1 | | R450-542000-001 |
| 2 | 300010040005 | 螺栓M10×20 Bolt M10×20 | 2 | | G005783-010020-00 |
| 3 | 300030010001 | 垫圈 10 Washer 10 | 2 | | G000093-000010-00 |
| 4 | 310040010071 | 管夹 Clip | 1 | | N163-540001-000 |
| 5 | 300030010015 | 垫圈 8 Washer 8 | 1 | | G000093-000008-00 |
| 6 | 300010040169 | 螺栓M8×16 Bolt M8×16 | 1 | | G005783-008016-00 |
| 7 | 310040010074 | 管夹 Clip | 2 | | R450-540001-000 |
| | | | | | |
| | | | | | |
| | | | | | |
| | | | | | |
| | | | | | |
| | | | | | |
| | | | | | |
| | | | | | |
| | | | | | |
| | | | | | |

图 7 制动油管总成
Fig.7 Brake oil pipe assy

Ⓐ CPCD40/45-XRG76 Ⓑ CPCD50-XRXG76 Ⓒ CPCD40/45-XRG75 Ⓓ CPCD50-XRXG75
Ⓜ CPCD40/45-XRG73 Ⓝ CPCD50-XRXG73 Ⓞ CPCD40/45-XRG93 Ⓟ CPCD50-XRG93



| 序号 Item | 物料码 Part NO. | 名称 Description | 数量 Qty | 备注或适用车型 Remarks Or Serial NO. | 原物料码 Original Part No. |
|------------|-----------------|-------------------------|-----------|----------------------------------|---------------------------|
| 1 | 300010040148 | 螺栓M6×16 Bolt M6×16 | 1 | | G005783-006016-00 |
| 2 | 300030010014 | 垫圈 6 Washer 6 | 2 | | G000093-000006-00 |
| 3 | 300030040013 | 垫圈6 Washer 6 | 1 | | G0097P1-000006-00 |
| 4 | 206300240086 | 支架 Bracket | 1 | | XR460-550100-000 |
| 5 | 205100360003 | 支架 Bracket | 1 | | JP300-520002-000 |
| 6 | 300040070012 | 螺钉M6×12 Screw M6×12 | 1 | | G000818-006012-00 |
| 7 | 205100370022 | 油杯 Oil cup | 1 | | JP300-524001-W00 |
| 8 | 206300230150 | 右制动油管 Brake oil pipe | 1 | | A450-530200-000 |
| 9 | 206300070662 | 制动胶管 Hose | 1 | | XR460-550001-000 |
| 10 | 209990000505 | 双钢丝式环箍19 Clamp 19 | 2 | | Q672-19-G00 |
| 11 | 206300230178 | 左制动油管 Brake oil pipe | 1 | | A450-530100-000 |
| | | | | | |
| | | | | | |
| | | | | | |
| | | | | | |

