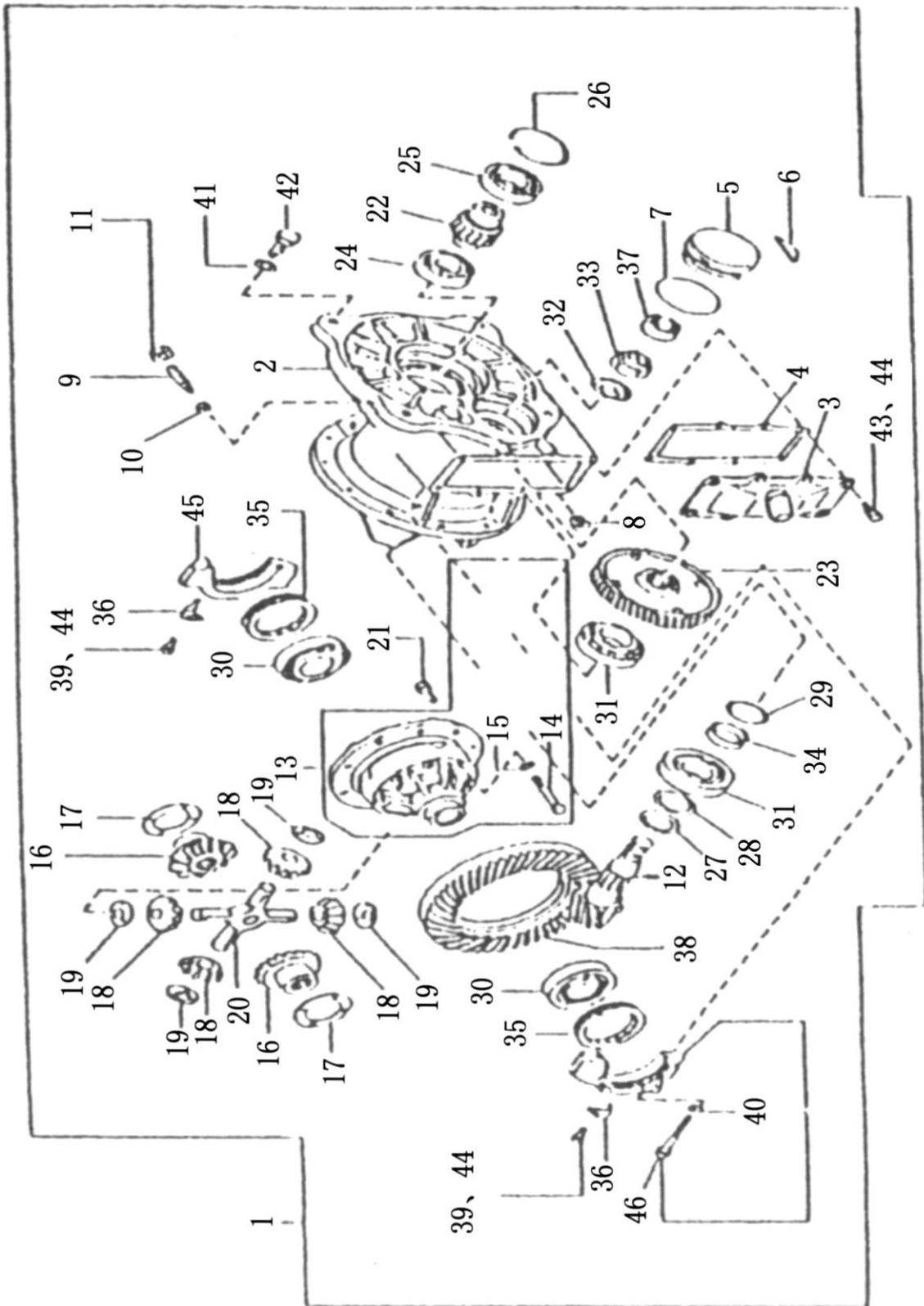


# 01 底盘部分

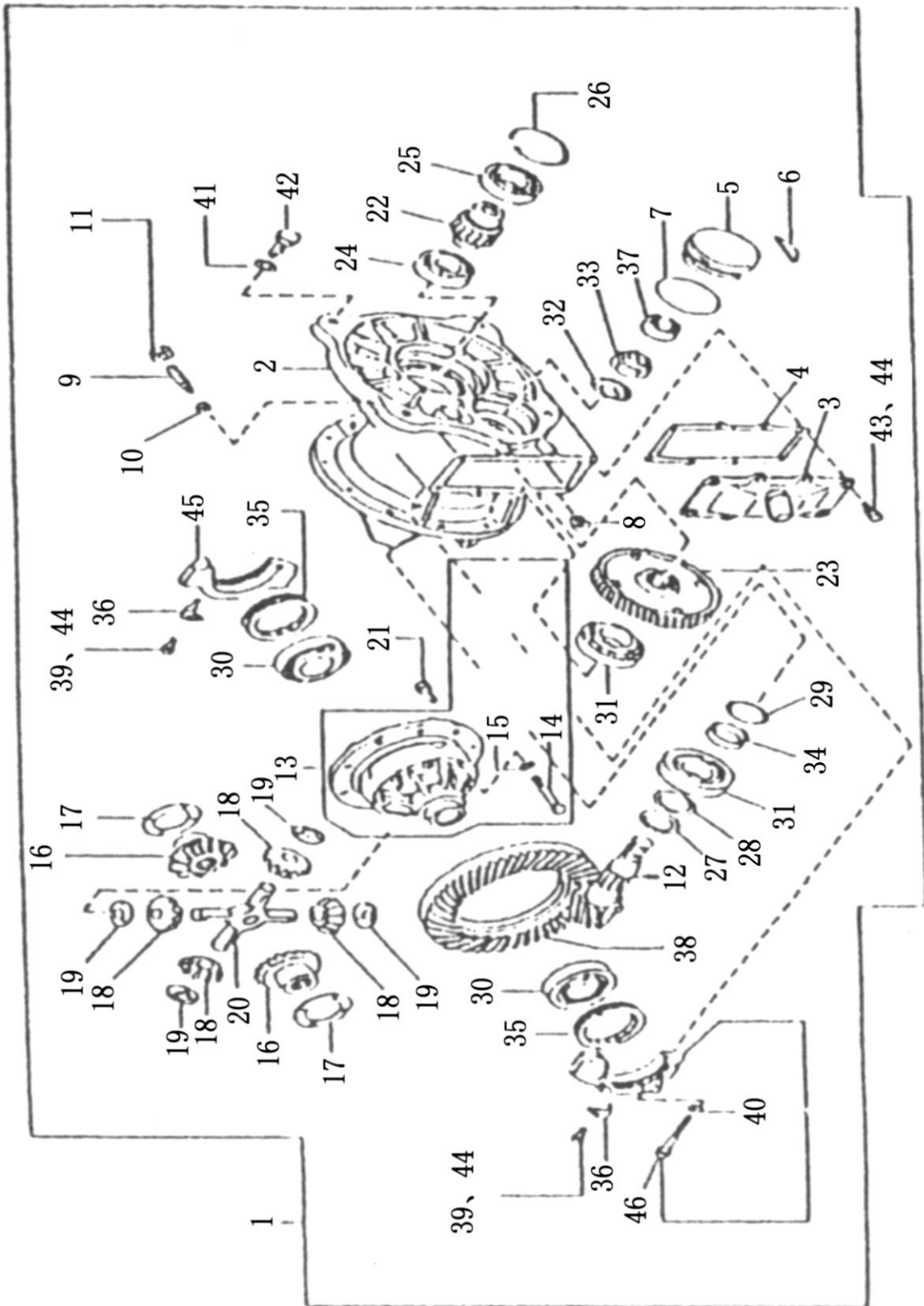
01-01 減速器总成  
FINAL DRIVE ASSEMBLY



01-01 减速器总成  
FINAL DRIVE ASSEMBLY

序号 NO.	零件图号 Part NO.	零件名称 Description	数量 Q'ty
1	30RC2200000	减速器总成 FINAL DRIVE ASSY	1
2	38310-45H01	减速器壳体 CARR ASSY-GEAR	1
3	38351-2K000	侧盖 COVER-GEAR CARR	1
4	38353-45H00	垫 GSKT-UPR, COVER	1
5	38341-32H00	轴承盖 COVER PINION, DRIVE	1
6	GB1099	键 6×25 KEY 6×25	1
7	GB1235	O形密封圈 100×3.1 O RING 100×3.1	1
8	JB/ZQ4446	螺塞 R 1/2 PLUG-DRAIN R 1/2	1
9	38105-11H01	支撑轴 SUPPORT-RING GEAR	1
10	38106-11H00	止退块 PIECE-THRUST	1
11	E08911-3241A	螺母 NUT-HEX	1
12	38112-31H00	主动锥齿轮 PINION-DRIVE HYP	1
13	38442-11H02	左差速器壳体 CASE ASSY-DIFFERENTIAL(LH)	1
	38421-J6200	右差速器壳体 CASE ASSY-DIFFERENTIAL(RH)	1
14	38429-L3000	螺栓 BOLT-DIFF GEAR CASE	8
15	GB93	垫圈 10 WASHER-SPRING 10	8
16	38423-82420	半轴齿轮 GEAR-SIDE, DIFF BEVER	2
17	38424-61500	半轴齿轮垫 WASHER-THRUST, SIDE GEAR	2 组
	38424-61501	半轴齿轮垫 WASHER-THRUST, SIDE GEAR	
	38424-61502	半轴齿轮垫 WASHER-THRUST, SIDE GEAR	
18	38425-61500	差速齿轮 PINION-MATE, DIFF BEVEL	4
19	38426-61500	差速齿轮垫 WASHER-THRUST, PINION MATE	4
20	38427-61501	差速齿轮轴 SHAFT-PINION MATE	1

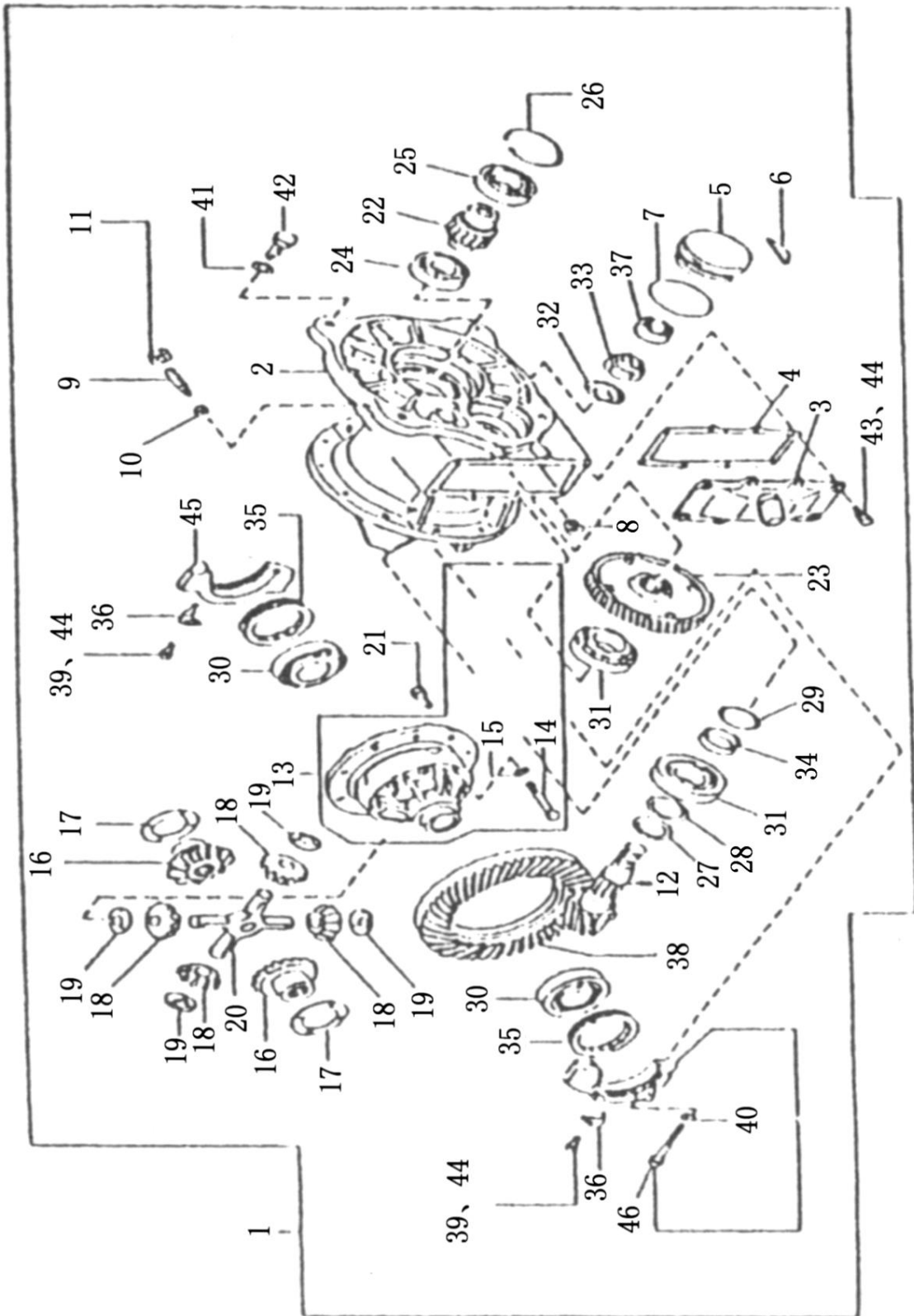
01-01 減速器总成  
FINAL DRIVE ASSEMBLY



01-01 減速器总成  
FINAL DRIVE ASSEMBLY

序号 NO.	零件图号 Part NO.	零件名称 Description	数量 Q'ty
21	38102-00H00	螺栓 BOLT-DRIVE GEAR	10
22	30RC2200002	小齿轮 PINION-INPUT	1
23	30RC2200001	大齿轮 GEAR-REDUCTION	1
24	GB/T276	滚动轴承 6208 BEARING-BALL 6208	1
25	GB/T276	滚动轴承 6209 BEARING-BALL 6209	1
26	GB893.1	挡圈 85 RING-SNAP 85	1
27	15RA2200008	调整垫圈 SHIM-ADJUST WASHER-SPRING	1
28	38127-45H00	调整垫 SHIM-ADJUST, BEARING	1 组
	38127-45H01	调整垫 SHIM-ADJUST, BEARING	
	38127-45H02	调整垫 SHIM-ADJUST, BEARING	
	38127-45H03	调整垫 SHIM-ADJUST, BEARING	
	38127-45H04	调整垫 SHIM-ADJUST, BEARING	
	38127-45H05	调整垫 SHIM-ADJUST, BEARING	
29	38127-L4000	调整垫 SHIM-ADJUST, BEARING	1 组
	38127-L4001	调整垫 SHIM-ADJUST, BEARING	
	38127-L4002	调整垫 SHIM-ADJUST, BEARING	
	38127-L4003	调整垫 SHIM-ADJUST, BEARING	
	38127-L4004	调整垫 SHIM-ADJUST, BEARING	
	38127-L4005	调整垫 SHIM-ADJUST, BEARING	
30	GB/T297	滚动轴承 32211 BEARING 32211	2
31	GB/T297	滚动轴承 30309 BEARING 30309	2
32	15RA2200013	锁圈 WASHER-LOCK	1
33	15RA2200014	锁紧螺母 NUT-BEAR, NG RETAINER	1
34	32139-46H00	隔套 PIECE-DISTANCE BEARING	1
35	38316-82100	调整螺母 NUT-SIDE BEARING	2
36	38319-82100	止退垫 ROD-TENSION	2

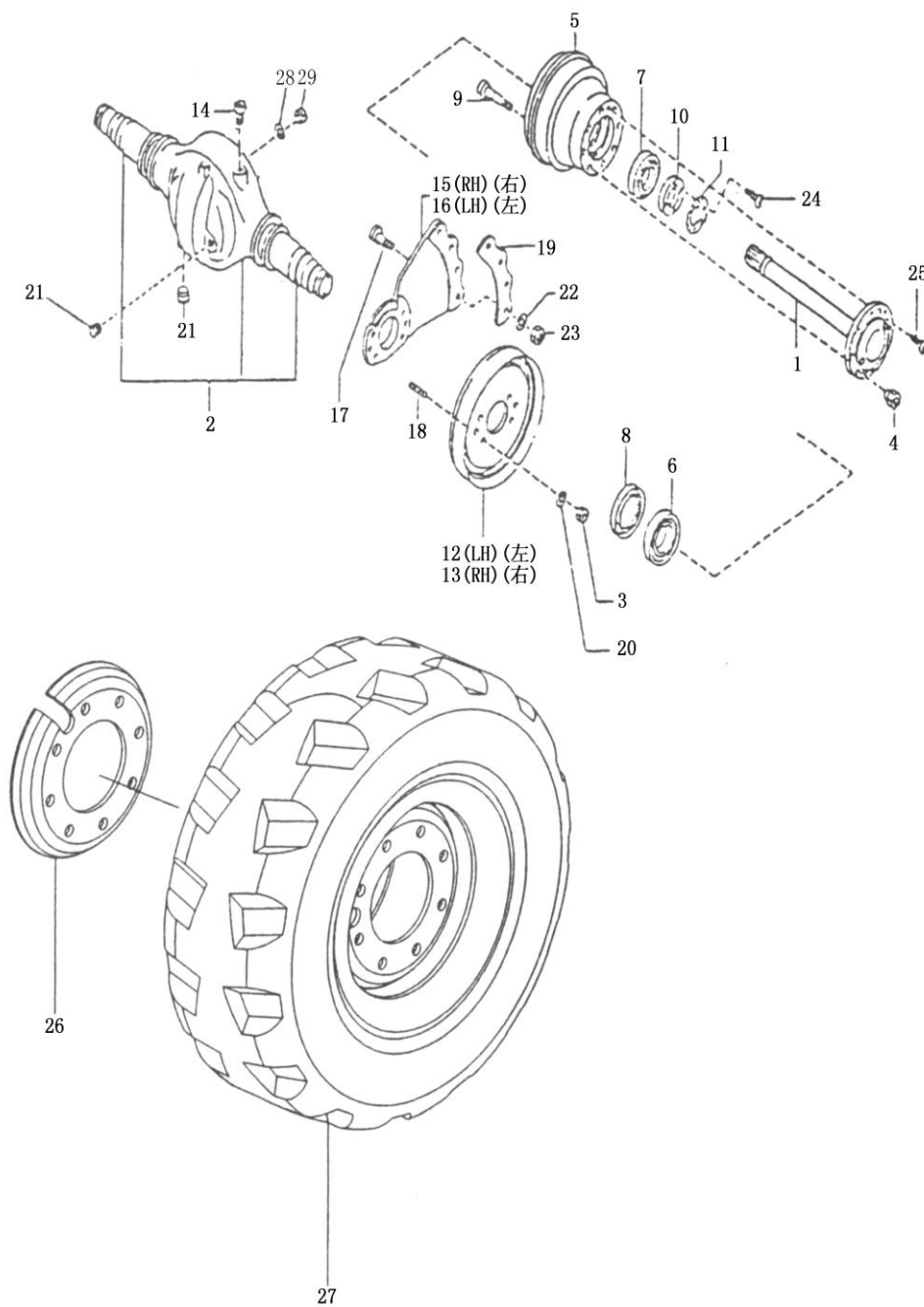
01-01 減速器总成  
FINAL DRIVE ASSEMBLY



01-01 減速器总成  
FINAL DRIVE ASSEMBLY

序号 NO.	零件图号 Part NO.	零件名称 Description	数量 Q'ty
37	GB/T283	滚动轴承 NJ305E BEARING NJ305E	1
38	38101-01H02	主減速器从动齿轮 GEAR-RING,HYPOID	1
39	GB5783	螺栓 M8×16 BOLT M8×16	2
40	GB93	垫圈 12 WASHER 12	4
41	GB93	垫圈 16 WASHER 16	4
42	50L5300003	螺栓 BOLT	4
43	GB5783	螺栓 M8×20 BOLT M8×20	8
44	GB93	垫圈 8 WASHER 8	10
45	38312-11H00	轴承盖 CAP-BRG,DIFF	2
46	38314-82100	螺栓 BOLT-DIFF BRG CAP	4

# 01-02 驱动桥 DRIVE AXLE

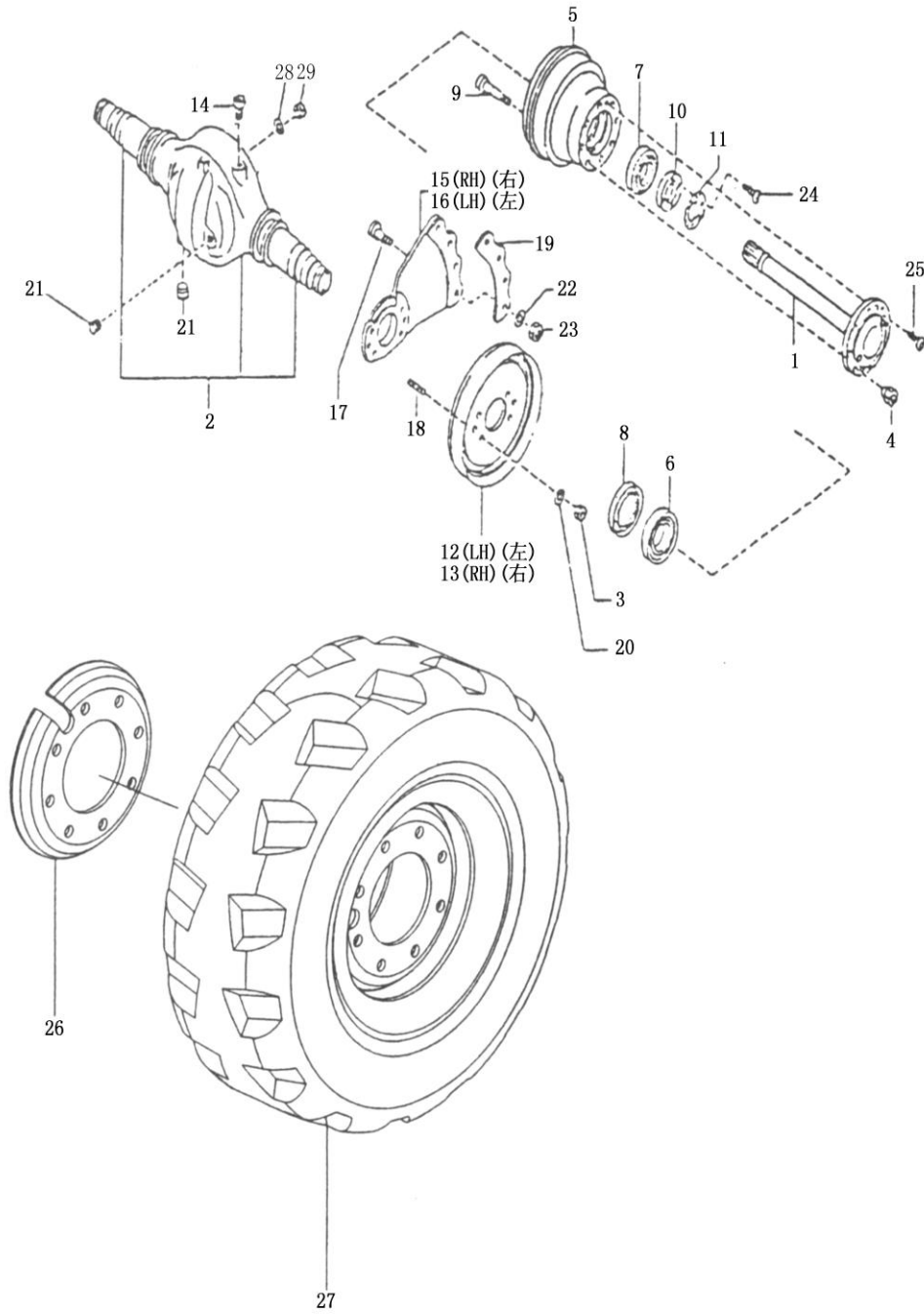




01-02 驱动桥  
DRIVE AXLE

序号 NO.	零件图号 Part NO.	零件名称 Description	数量 Q'ty
1	30RC2100001	半轴 SHAFT-DRIVE AXLE	2
2	30RC2120000	驱动桥壳体总成 DRIVE AXLE HOUSING & TUBE ASSY	1
3	E08911-2441A	螺母 NUT	12
4	E43224-T5400	轮毂螺母 NUT-ROAD WHEEL	16
5	E43204-11H01	轮毂 HUB-DRIVE AXLE	2
6	GB/T297	滚动轴承 32013 BEARING 32013	2
7	GB/T297	滚动轴承 30211 BEARING 30211	2
8	GB9877.1	密封圈 FB75×100×10 SEAL-DUST FB75×100×10	2
9	E43225-11H00	轮毂螺栓 BOLT-HUB	16
10	43231-T8000	锁紧螺母 NUT-LOCK	2
11	43234-T8000	锁片 WASHER-LOCK	2
12	44010-2K410	左制动器总成 BRAKE ASSY(LH)	1
13	44000-2K410	右制动器总成 BRAKE ASSY(RH)	1
14	100X2160000	通气装置 BREATHER ASSY	1
15	43080-11H01	右连接板 BRACKET-DRIVE AXLE MTG RH	1
16	43081-11H01	左连接板 BRACKET-DRIVE AXLE MTG LH	1
17	43027-11H00	螺栓 BOLT	8
18	E44074-11H01	双头螺栓 STUD	12
19	43070-11H05	调整垫 SPACER-REAR AXLE BEARING	1
20	GB93	垫圈 14 WASHER 14	12
21	JB/ZQ4446	螺塞 R1/2 PLUG R1/2	2

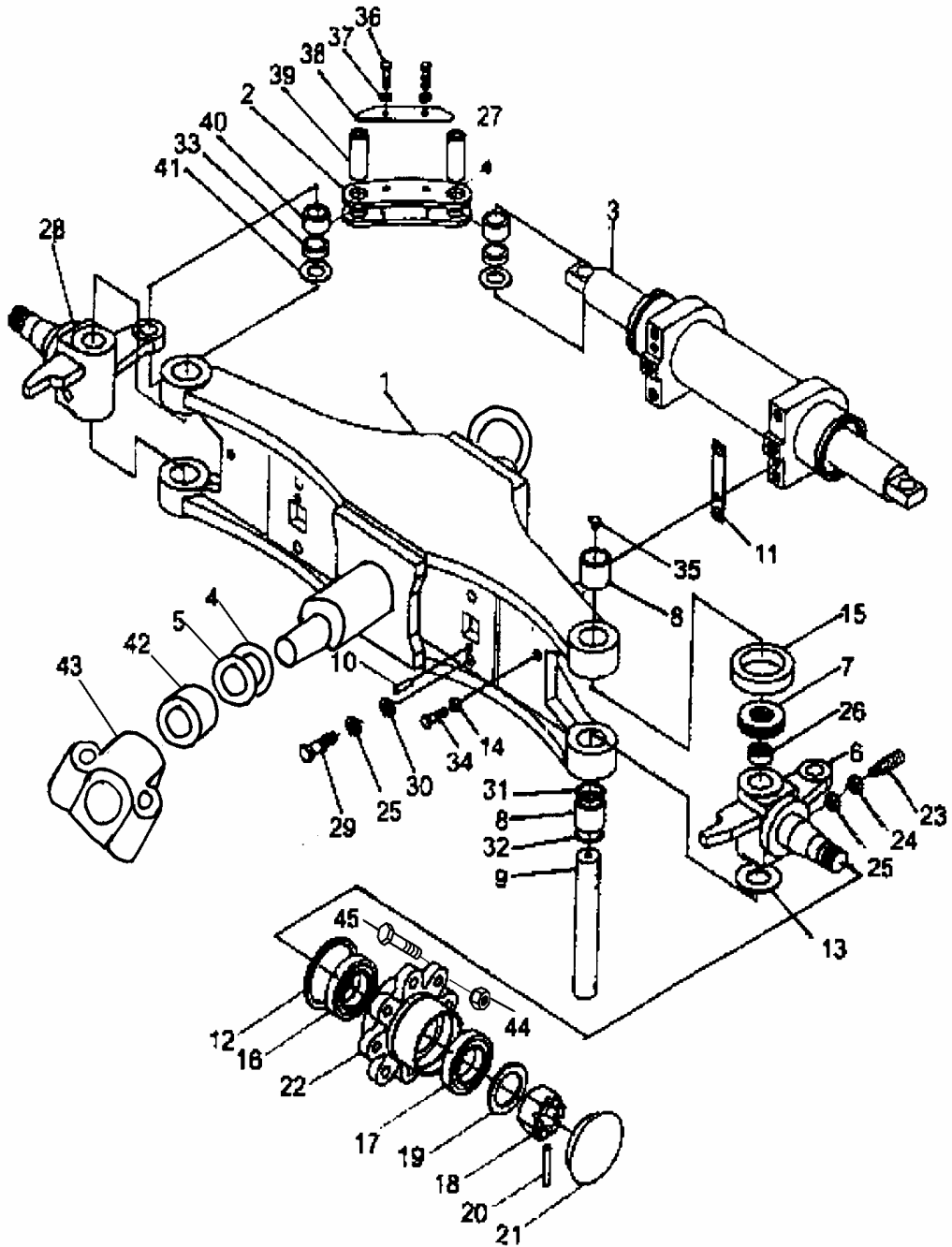
# 01-02 驱动桥 DRIVE AXLE



01-02 驱动桥  
DRIVE AXLE

序号 NO.	零件图号 Part NO.	零件名称 Description	数量 Q'ty
22	GB93	垫圈 18 WASHER 18	8
23	E08915-2481A	螺母 NUT	8
24	GB818	螺钉 M6×12 SCREW M6×12	4
25	GB68	螺钉 M8×20 SCREW M8×20	2
26	30RC2110000	轮辋 RIM SET-DISC WHEEL	2
27	GB/T2982	轮胎 28×9-15 12PR TIRE 28×9-15 12PR	2
28	GB93	垫圈 8 WASHER 8	12
29	E08170-8351A	螺栓 BOLT	12

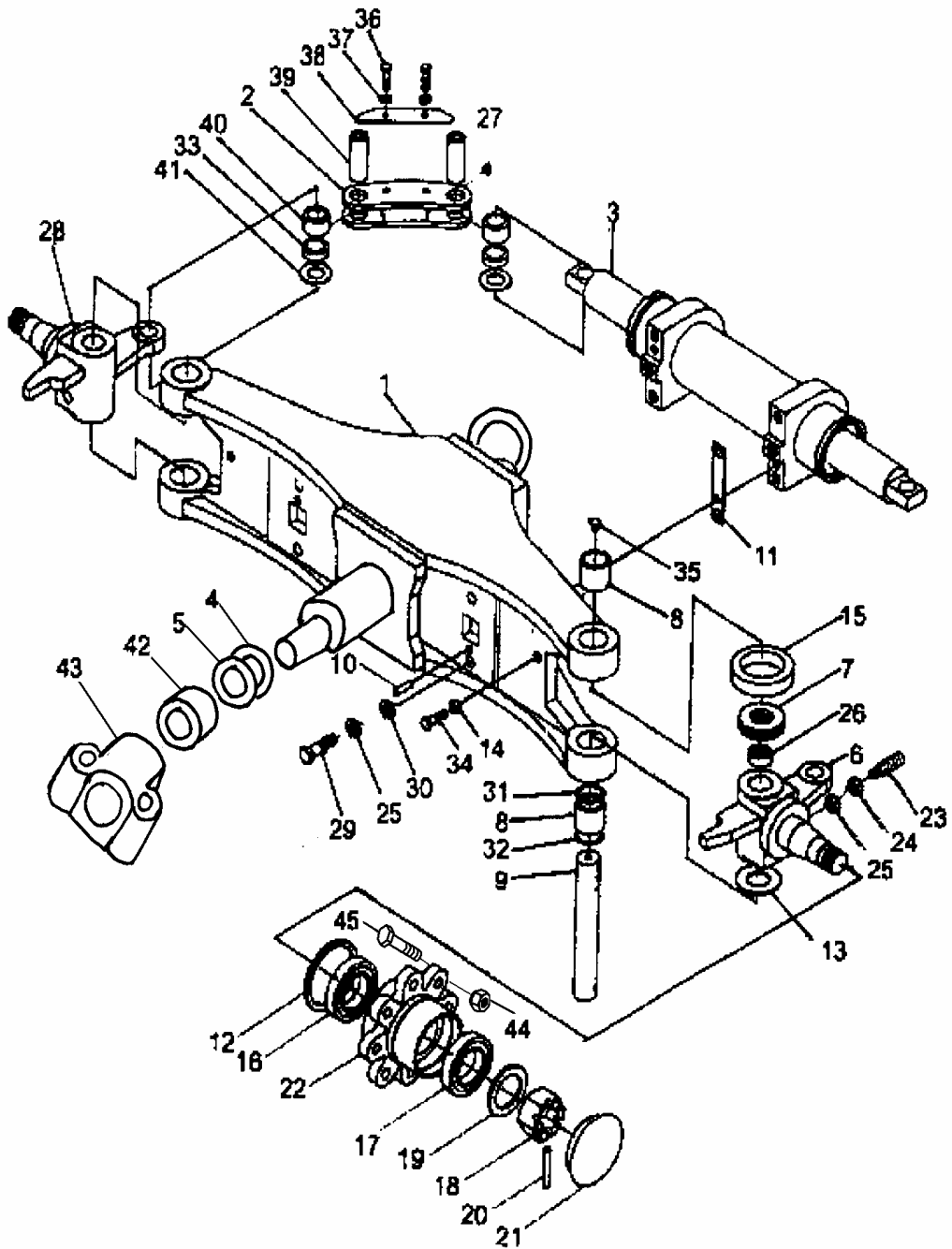
01-03-01 转向桥  
STEERING AXLE



01-03-01 转向桥  
STEERING AXLE

序号 No.	零件图号 Part No.	零部件名称 Description		数量 Q'ty
1	A21B4-30201C	桥体总成	AXLE ASS'Y	1
2	A21B4-32081	连杆	LINK	2
3	A21B4-30401	转向油缸	POWER CYLINDER	1
4	A21B4-32301	垫片	WASHER	2
5	A21B4-32291	垫片	WASHER	4
6	H24C4-32181	右转向节总成	KNUCKLE R.H.ASS'Y	1
7	Z-8208	单向推力轴承（加防尘罩）	BEARING	2
8	Z3000-04332W	滚针轴承	BEARING	4
9	A21B4-32222	转向节主销	PIN KING	2
10	GB119	销	PIN	2
11	A21B4-32251	调整垫	SHIM	4
12	Z6301-08524	橡胶油封	SEAL,OIL	2
13	22214-30321	转向节调整垫	SHIM	8
14	GB6172	螺母	NUT	2
15	A21B4-12002	防尘罩	CAP	2
16	Z-32211	轴承	BEARING	2
17	Z-32207	轴承	BEARING	2
18	A21B4-32311	螺母	NUT	2
19	GB97.1	垫圈	WASHER	2
20	GB91	销	PIN	2
21	A21B4-32231	轮毂盖	CAP	2
22	A21B4-32241	轮毂	HUB	2
23	GB78	紧固螺钉	SCREW	2

01-03-01 转向桥  
STEERING AXLE



01-03-01 转向桥  
STEERING AXLE

序号 NO.	零件图号 Part NO.	零件名称 Description	数量 Q'ty
24	GB6170	螺母 NUT	2
25	GB93	垫圈 WASHER	2
26	A21B4-12001	衬套 BUSHING	2
27	Q700B06	直通式滑脂嘴 FITTING GREASE	2
28	H24C4-32171	左转向节总成 KNUCKLE L.H.ASS'Y	4
29	GB5782	螺栓 BOLT	1
30	GB97.1	垫圈 WASHER	4
31	23654-32161	O形圈 O-RING	4
32	23654-32081	油封 SEAL,OIL	2
33	H24C4-12003	衬套 BUSHING	4
34	GB5782	螺栓 BOLT	4
35	Q701B90	弯颈式滑脂嘴 FITTING GREASE	2
36	GB5782	螺栓 BOLT	4
37	GB93	垫圈 WASHER	4
38	A21B4-32300	挡板 BAFFLE	4
39	A21B4-32261A	销轴 PIN	2
40	H24C4-32061	ES型向心关节轴承 BEARING	4
41	A21B4-32281	调整垫 SHIM	4
42	A21B4-32181	衬套 BUSHING	2组
43	A21B4-32171	后桥支座 SUPPORT	2
44	23654-34051	轮毂螺母 NUT,HUB	16
45	23654-32041	轮毂螺栓 BOLT,HUB	16

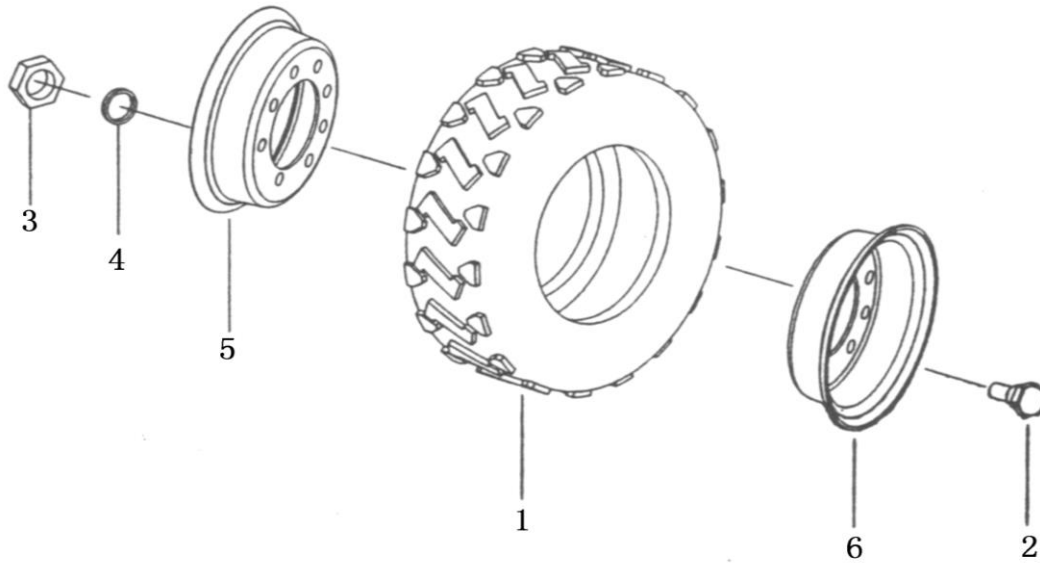




01-03-02 转向油缸  
STEERING CYLINDER

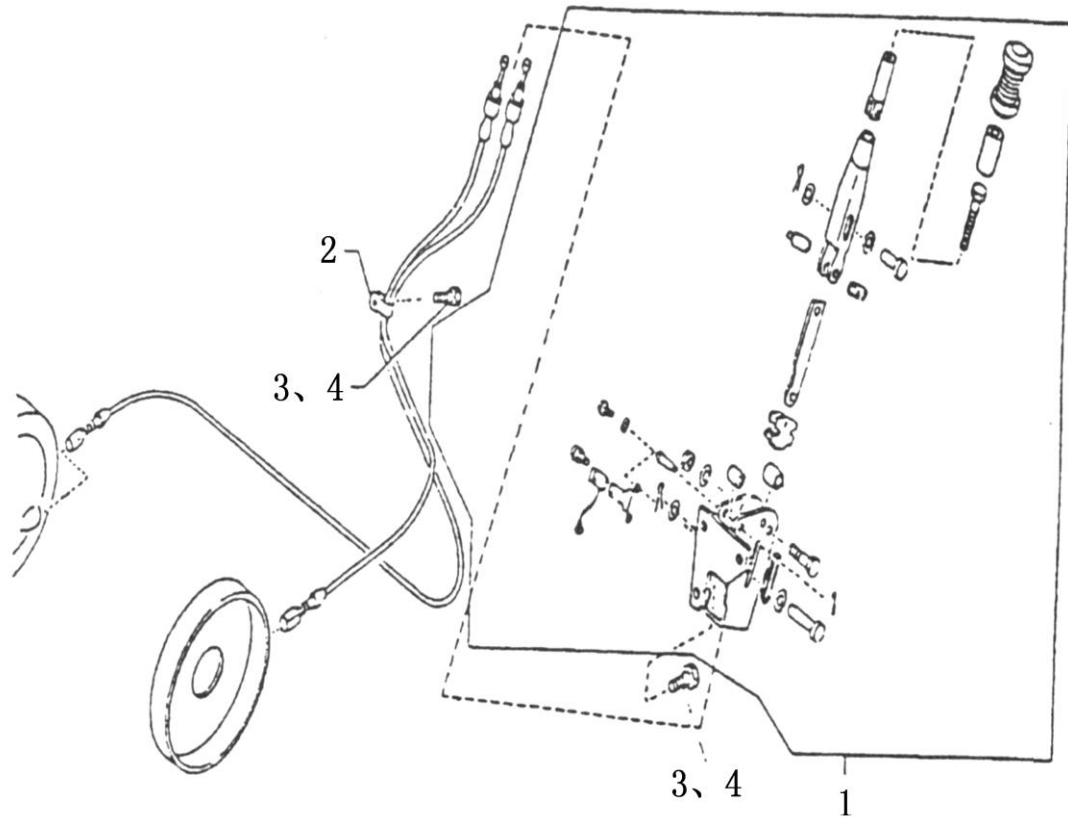
序号 NO.	零件图号 Part NO.	零件名称 Description	数量 Q'ty
1	H24C4-52153	活塞杆                      Piston rod	1
2	24329-45581	防尘圈 50×72×8/11      Seal Dust50×72×8/11	2
3	A21B4-32151	缸盖                              Cap	2
4	Z2114-05030	钢背轴承 5030              Bearing 5030	2
5	A21B4-30501	缸体                              Cylinder	1
6	Z6053-06003	O形圈 D63×3.55          O-ring D63×3.55	1
7	Z6003-05004	O形圈 D50×3.5              O-ring D50×3.5	1
8	H24C4-52171	支承环                          Seal, slipper	1
9	H24C4-53001S	支承环 70×10×2.5        Seal, slipper70×10×2.5	1
10	Z1505-00060	钢球□6                        Steel ball□6	20
11	H24C4-52163Sa	活塞                              Piston	1
12	Z6003-07003	O型密封圈 D70×3.1      O-ring D70×3.1	2
13	A21B4-32141	轴套                              Bush	2
14	REF340213/24328-52201	轴用密封圈 50×65×9      Seal 50×65×9	2
15	24328-52211	挡片 50×65×3              Snap shim 50×65×3	2
16	A21B4-32161	垫片                              Gasket	2组 2group

01-04 转向车轮总成  
ROAD WHEEL & TIRE-STEERING



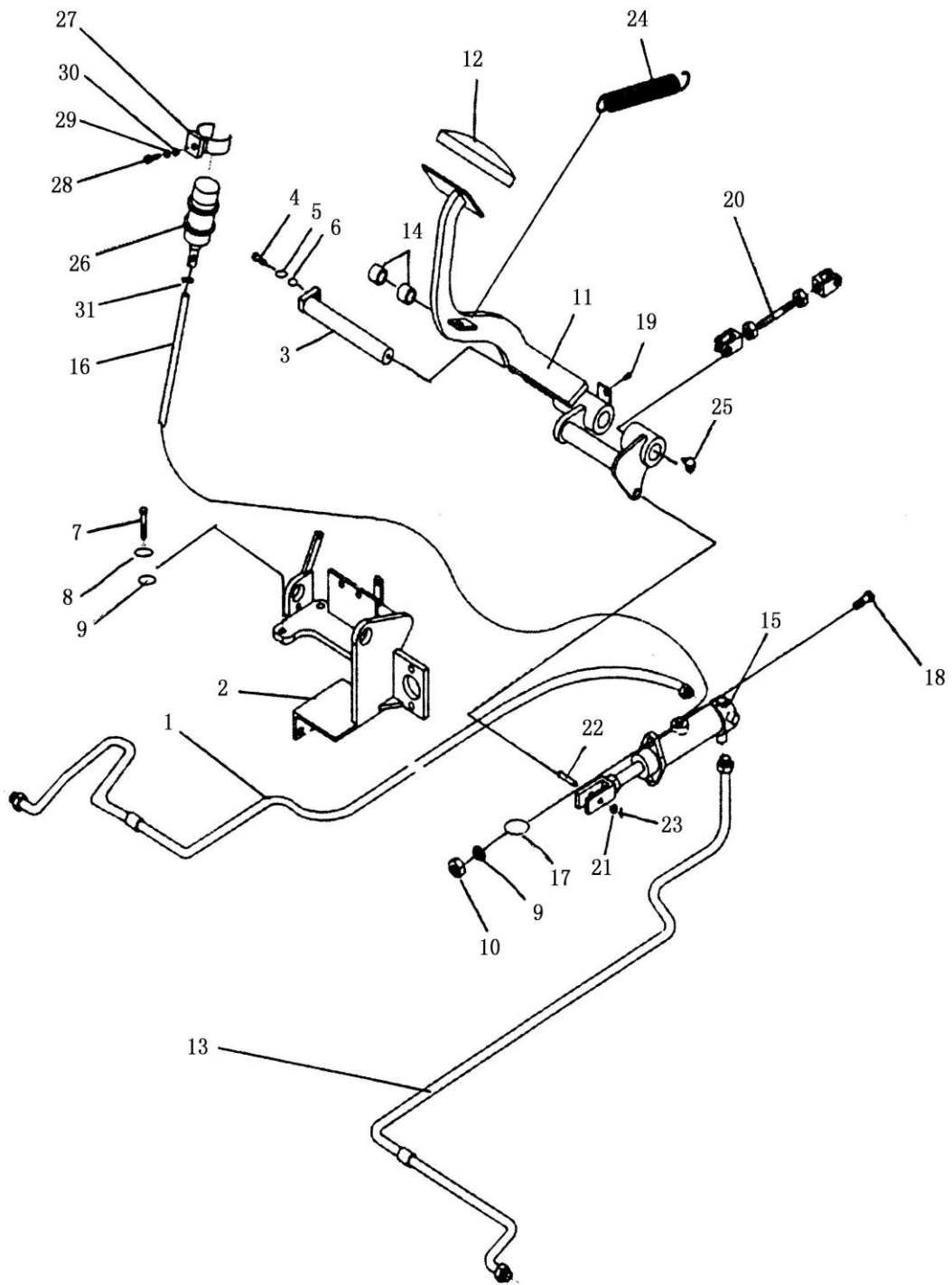
序号 NO.	零件图号 Part NO.	零件名称 Description	数量 Q'ty
1	6.5-10-10PR	轮胎 6.5-10-10PR TIRE 6.5-10-10PR	1
2	L91239-03300	螺栓 BOLT	8
3	GB6171	螺母 M12×1.25 MUT M12×1.25	8
4	GB93	垫圈 12 WASHER SPRING 12	8
5	30X4500001	后轮辋（外） REAR RIM ,OUTSIDE	1
6	30X4500002	后轮辋（内） REAR RIM ,INSIDE	1

01-05 手制动操纵  
PARKING BRAKE CONTROL



序号 NO.	零件图号 Part NO.	零件名称 Description	数量 Q'ty
1	36010-41H02	手制动器 DEVICE ASSY-PARKING BRAKE	1
2	46289-89976	线夹 CLAMP	1
3	GB5781	螺栓 M8×16 BOLT M8×16	4
4	GB93	垫圈 8 WASHER 8	4

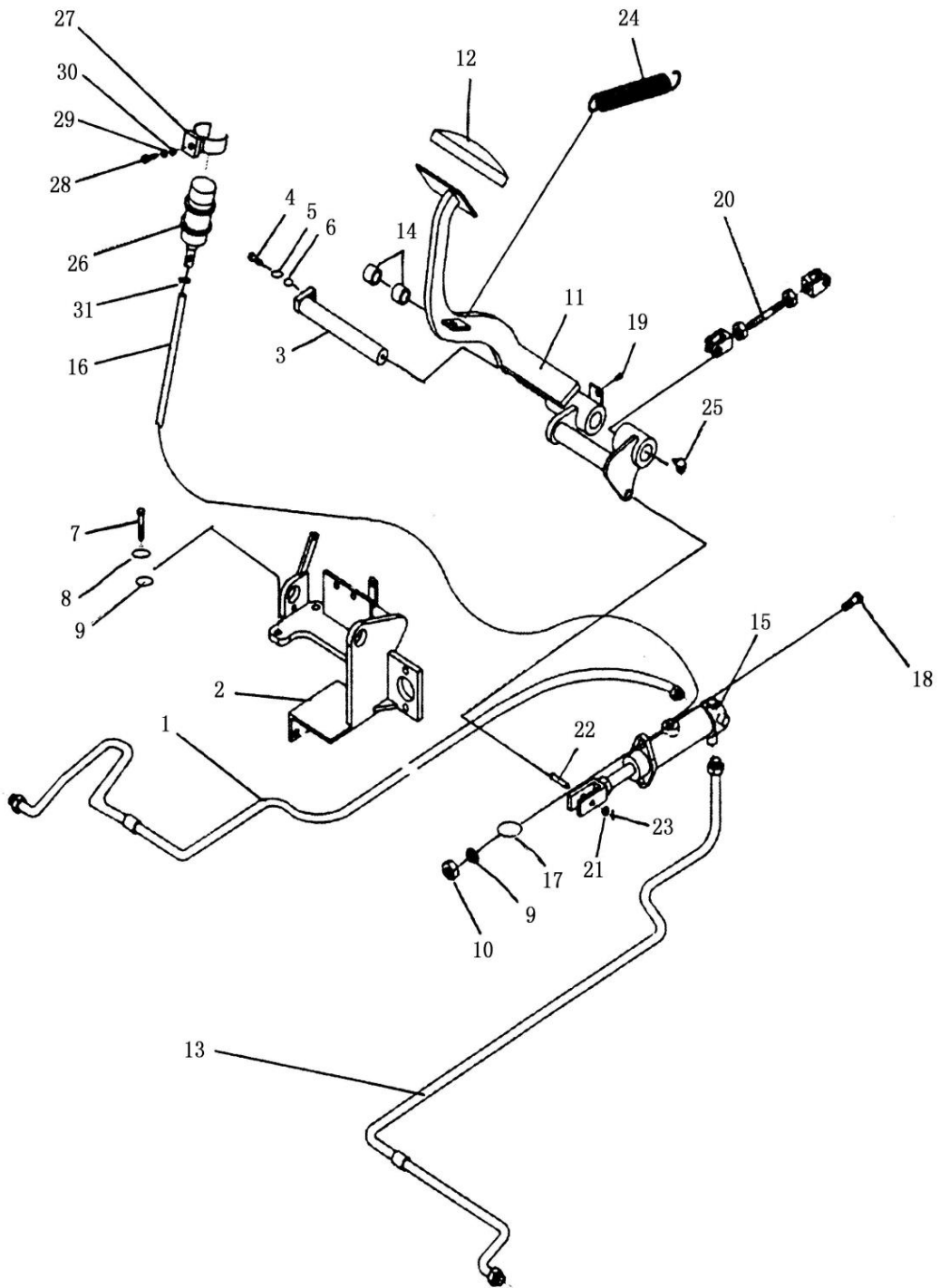
01-06 制动踏板总成  
BRAKE & CLUTCH PEDAL



01-06 制动踏板总成  
BRAKE & CLUTCH PEDAL

序号 NO.	零件图号 Part NO.	零件名称 Description	数量 Q'ty
1	15RA6110000	右刹车管 TUBE ASSY-BRAKE RH	1
2	25RC6120000	板组件 1 BRACKET ASSY-PEDAL 1	1
3	15RA6130000	轴 SHAFT-FULCRUM	1
4	GB5781	螺栓 M8×20 BOLT M8×20	1
5	GB97.1	垫圈 8 WASHER 8	1
6	GB93	垫圈 8 WASHER 8	1
7	GB5782	螺栓 M10×30 BOLT M10×30	4
8	GB93	垫圈 10 WASHER 10	4
9	GB97.1	垫圈 10 WASHER SPRING 10	6
10	GB6170	螺母 M10 NUT M10	6
11	15RA6140000	板组件 2 PEDAL ASSY-BRAKE 2	1
12	30X6100001	盖 PAD-PEDAL	1
13	15RA6150000	左刹车管 TUBE ASSY-BRAKE LH	1
14	15RA6100001	铜垫 WASHER	2
15	CK3/4	刹车总泵 BRAKE MASTER CYLINDER	1
16	GB/T13527.1	软聚氯乙烯管 LS-10×1.5×550 PVC TUBL LS-10×1.5×550	1
17	GB93	垫圈 10 WASHER 10	2
18	GB5783	螺栓 M10×35 BOLT M10×35	2
19	46584-S0100	挡块 STOPPER-RUBBER	1
20	15RA6160000	推杆 ROD	1
21	GB97.1	垫圈 8 WASHER 8	1

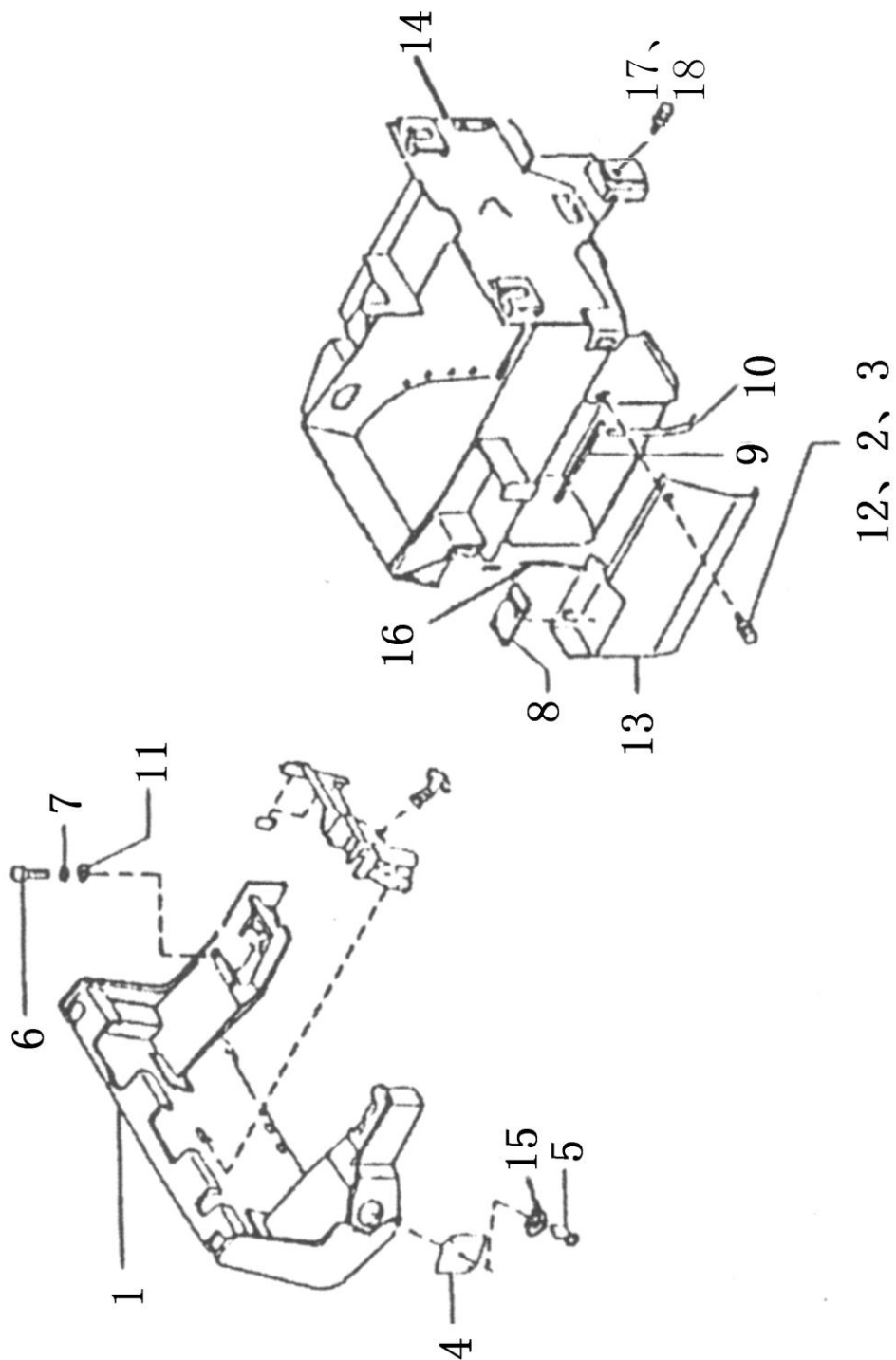
01-06 制动踏板总成  
BRAKE & CLUTCH PEDAL



01-06 制动踏板总成  
BRAKE & CLUTCH PEDAL

序号 NO.	零件图号 Part NO.	零件名称 Description	数量 Q'ty
22	GB882	销轴 8×20 PIN 8×20	1
23	GB91	销 2.5×20 PIN-SNAP 2.5×20	1
24	46487-48270	弹簧 SPRING-PEDAL RETURN	1
25	JB/T7940.1	油杯 M8×1 NIPPLE M8×1	1
26	23775-42100	储油罐 OIL TANK	1
27	15RA6170000	夹子 CLIP	1
28	GB5781	螺栓 M5×10 BOLT M5×10	2
29	GB93	垫圈 5 WASHER SPRING 5	2
30	GB97.1	垫圈 5 WASHER 5	2
31	JB/ZQ3777	喉箍 11~16 NIPPLE 11~16	2

01-07 仪表架装配  
FRAME

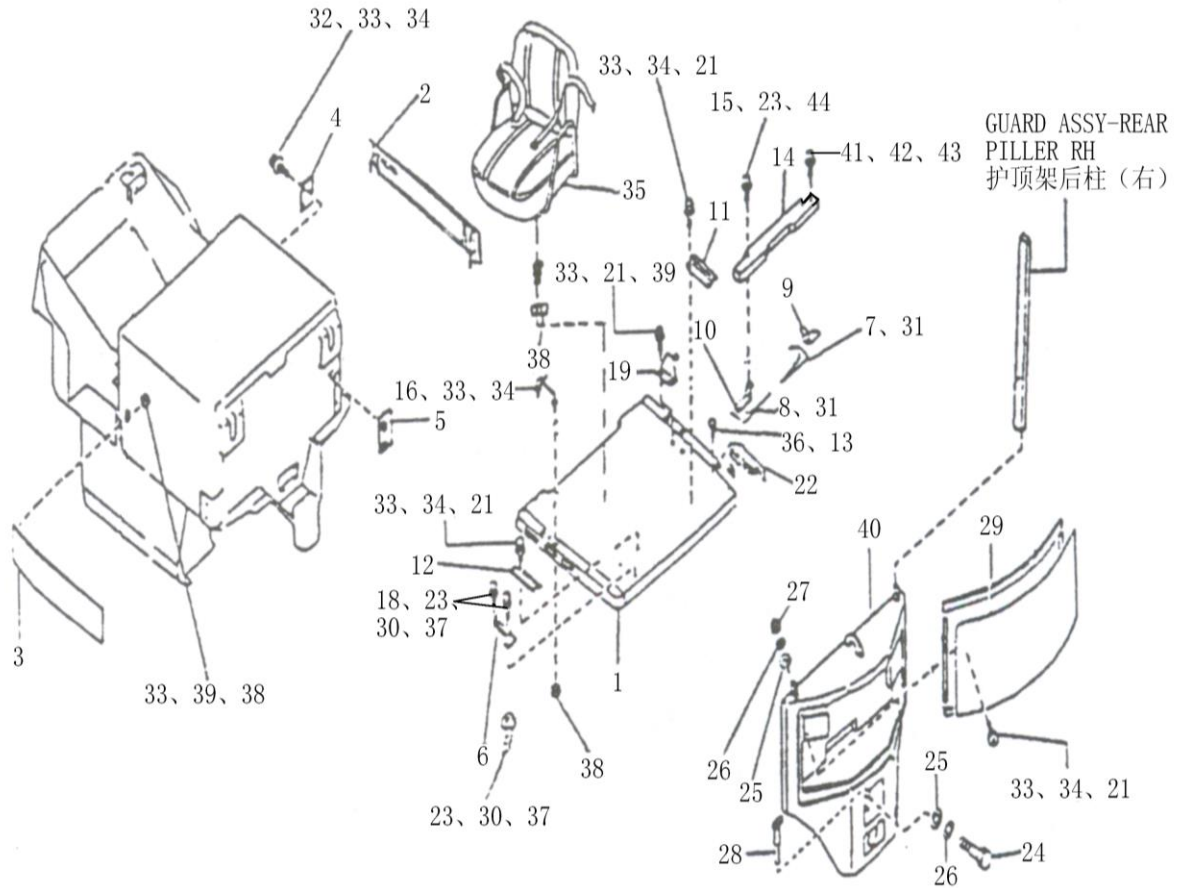




01-07 仪表架装配  
FRAME

序号 NO.	零件图号 Part NO.	零件名称 Description	数量 Q'ty
1	30RC5210000	仪表架 FRAME ASSY-INSTRUMENT	1
2	GB93	垫圈 10 WASHER SPRING 10	2
3	GB97.1	垫圈 10 WASHER 10	2
4	50591-2K400	倾斜油缸盖板 COVER ASSY-TILT CYLINDER	1
5	GB65	螺钉 M6×10 SCREW M6×10	2
6	GB5786	螺栓 M14×1.5×30 BOLT M14×1.5×30	7
7	GB93	垫圈 14 WASHER SPRING 14	7
8	15RA5100009	踏板 MAT-STEP	1
9	30RC5100008	密封条 SEAL-SIDE,RUBBER	1
10	30RC5100006	密封条 SEAL-COVER	1
11	GB97.1	垫圈 14 WASHER 14	7
12	GB5783	螺栓 M10×25 BOLT M10×25	2
13	30RC5150000	电机罩总成 PANEL ASSY-SIDE LH	1
14	30RC5100000	车架 FRAME	1
15	GB93	垫圈 6 WASHER 6	2
16	30RC5100007	密封条 SEAL-COVER	1
17	GB5785	螺栓 M20×1.5×80 BOLT M20×1.5×80	4
18	GB93	垫圈 20 WASHER 20	4

01-08 电瓶罩及座椅装配  
INSTRUMENT PANEL AND HOOD

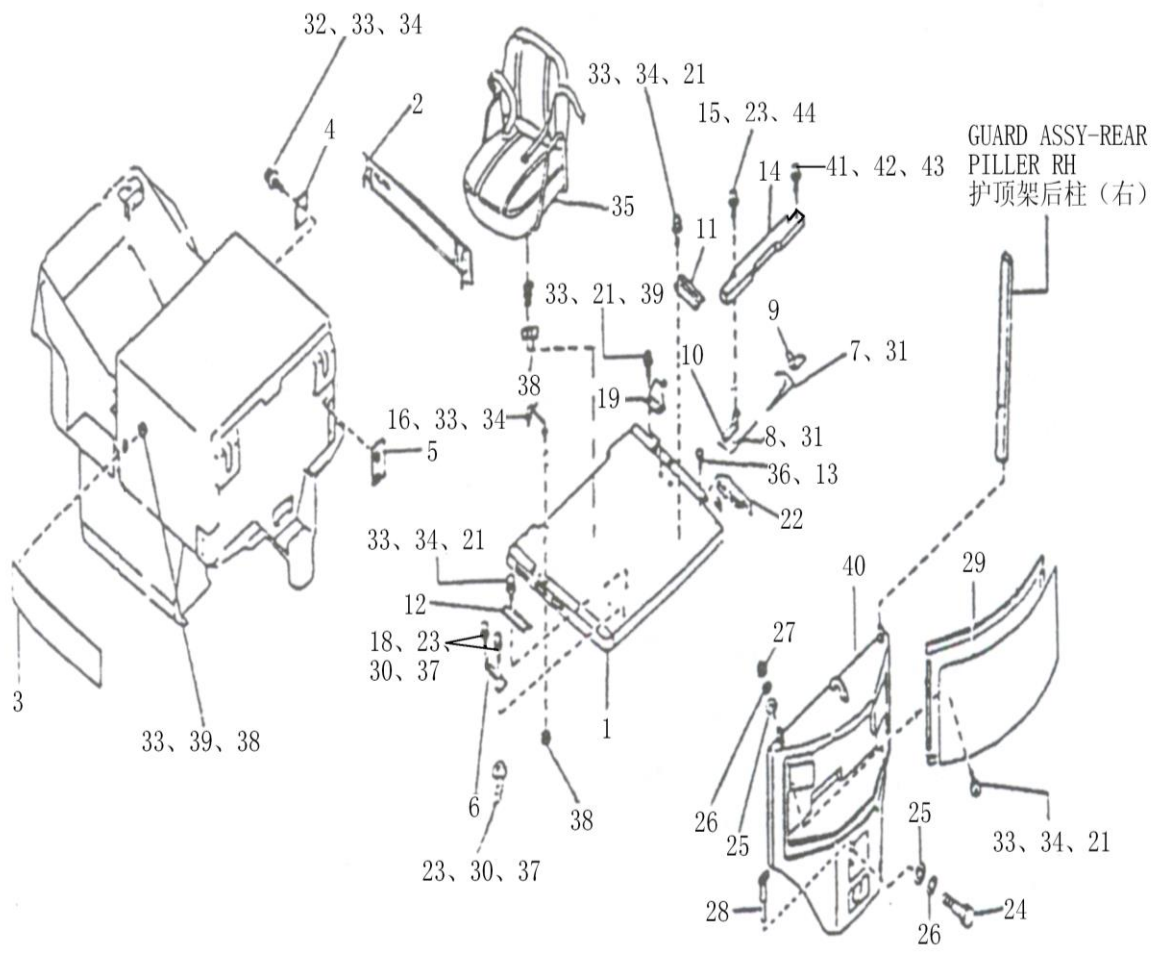


序号 NO.	零件图号 Part NO.	零件名称 Description	数量 Q'ty
1	30RC5810000	电瓶罩 PANEL ASSY-TOP, UPPER	1
2	30RC5540000	右侧挡板 PANEL ASSY-TOP, SIDE RH	1
3	30RC5550000	左侧挡板 PANEL ASSY-TOP, SIDE LH	1

01-08 电瓶罩及座椅装配  
INSTRUMENT PANEL AND HOOD

序号 NO.	零件图号 Part NO.	零件名称 Description	数量 Q'ty
4	15RB5502000	联板 BRACKET ASSY-TOP SIDE A FRONT	1
5	15RB5505000	联板 BRACKET ASSY-TOP SIDE A REAR RH	1
6	30X5250000	铰链 HINGE ASSY-TOP PANEL	2
7	30RC5800002	扭簧(右) BAR-TORSION TOP PANEL RH	1
8	30RC5800001	扭簧(左) BAR-TORSION TOP PANEL LH	1
9	15RA5800002	扭簧支架(右) SPACER-HINGE RH	1
10	15RA5800005	扭簧支架(左) SPACER-HINGE LH	1
11	15RA5800003	扭簧限位板(右) BRACKET ASSY-TORSION BAR RH	1
12	15RA5800006	扭簧限位板(左) BRACKET ASSY-TORSION BAR LH	1
13	GB97.1	垫圈 5 WASHER 5	2
14	15RA5830000	扭簧盒 COVER ASSY-TORSION BAR	1
15	GB5781	螺栓 M6×20 BOLT M6×20	2
16	15RA5800001	拉手 STRAP ASSY-TOP PANEL	1
18	GB6170	螺母 M6 NUT M6	4
19	E65350-43H00	弯板总成 STRIKER ASSY-TOP PANEL	1
21	GB5781	螺栓 M8×25 BOLT M8×25	7
22	15RA5810000	电瓶罩小侧门总成 LID ASSY-TOP	1
23	GB93	垫圈 6 WASHER 6	10
24	GB5782	螺栓 M30×90 BOLT M30×90	1
25	15RA5900002	垫圈 WASHER	3

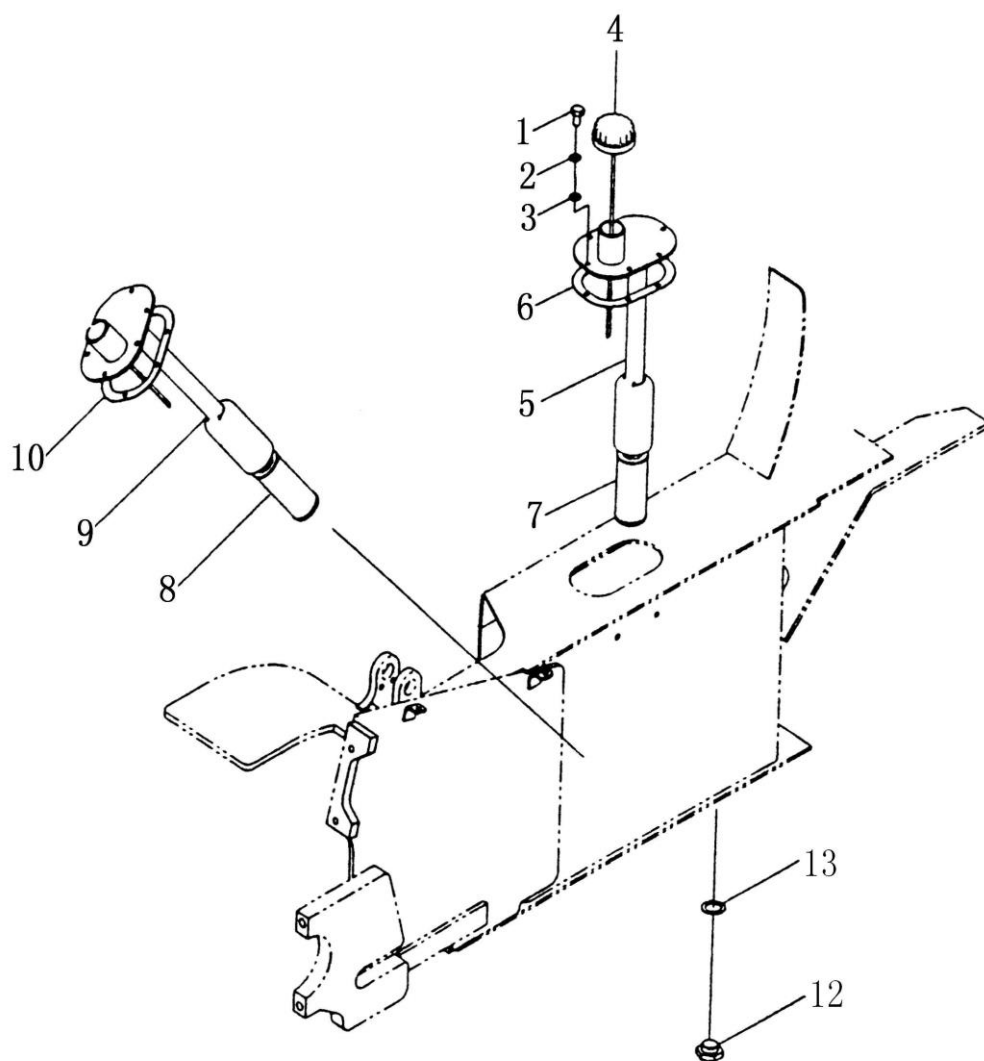
# 01-08 电瓶罩及座椅装配 INSTRUMENT PANEL AND HOOD



01-08 电瓶罩及座椅装配  
INSTRUMENT PANEL AND HOOD

序号 NO.	零件图号 Part NO.	零件名称 Description	数量 Q'ty
26	GB93	垫圈 30 WASHER-LOCK 30	3
27	GB6170	螺母 M30 NUT M30	2
28	65520-41H00	牵引销 PIN-TRACTION	1
29	65550 41H02	控制器盖总成 COVER ASSY-CONTROLLER	1
30	GB97.1	垫圈 6 WASHER 6	8
31	GB/T13527.1	软聚氯乙烯管 LS-6.0×1.0×150 PVC TUBL LS-6.0×1.0×150	2
32	GB5783	螺栓 M8×16 BOLT M8×16	2
33	GB93	垫圈 8 WASHER SPRING 8	9
34	GB97.1	垫圈 8 WASHER 8	17
35	YH-1601	座椅 SEAT	1
36	GB67	螺钉 M5×20 SCREW M5×20	2
37	GB68	螺钉 M6×30 SCREW M6×30	8
38	GB6170	螺母 M8 NUT M8	12
39	GB96.1	垫圈 8 WASHER 8	2
40	30RC5910000	平衡重 WT ASSY-CNTR	1
41	GB5781	螺栓 M10×25 BOLT M10×25	2
42	GB93	垫圈 10 WASHER SPRING10	2
43	GB97.1	垫圈 10 WASHER10	2
44	15RA5800008	垫片 GASKET	2
45	GB7526	金属混合密封条（九字管） 长 1m THE METALS MIXS WITH TO SEAL BAR 1m	1

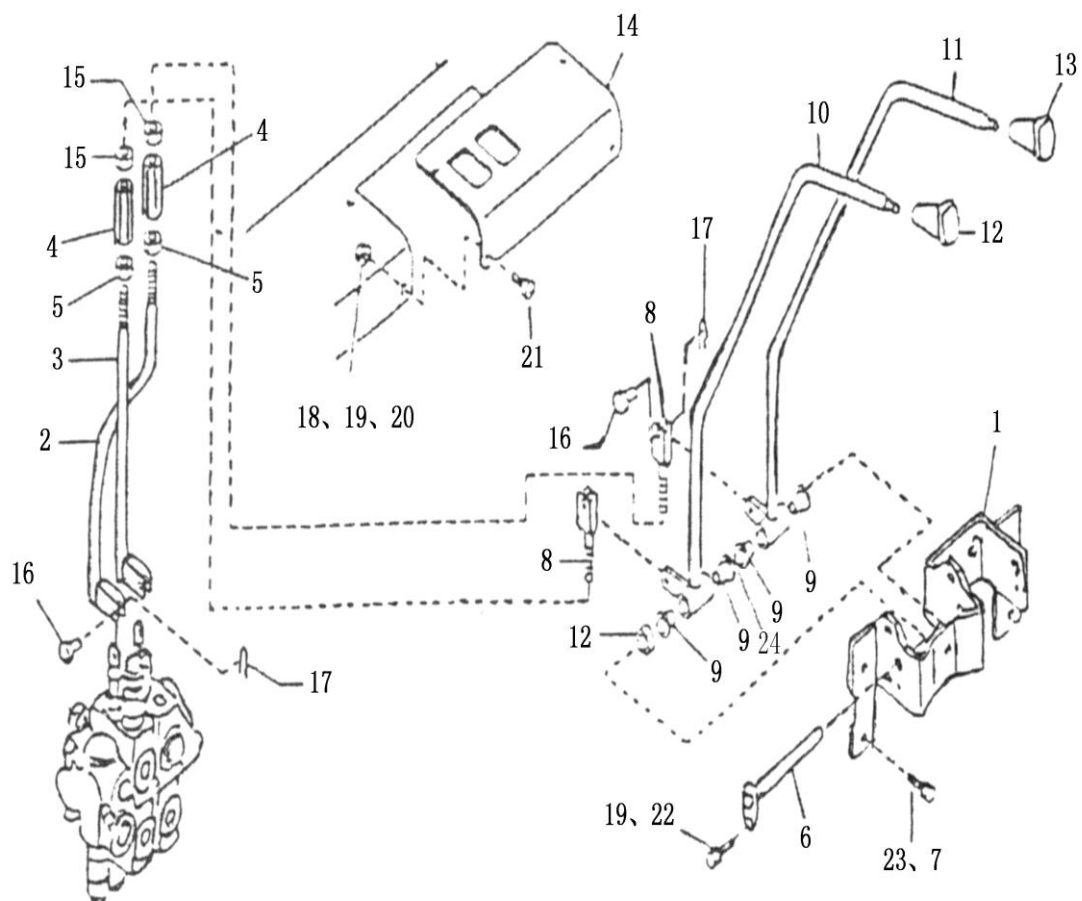
01-09 工作油箱安装  
HYDRAULIC OIL TANK FITTING



01-09 工作油箱安装  
HYDRAULIC OIL TANKFITTING

序号 NO.	零件图号 Part NO.	零件名称 Description	数量 Q'ty
1	GB5783	螺栓 M8×16 BOLT M8×16	10
2	GB93	垫圈 8 WASHER SPRING 8	10
3	GB97.1	垫圈 8 WASHER 8	10
4	E69260-41H03	油箱盖 GAUGE ASSY-LEVEL	1
5	E69250-41H10	回油总成 PIPE ASSY-RUBBER VALVE RETURN	1
6	69271-41H00	垫 GASKET	1
7	91875-11400	滤油器 GILTER ASSY-MICRON	1
8	WU-63×180J	滤油器 FILTER	1
9	25RC5610000	进油总成 FILTER ASSY-HYDRAULIC OIL	1
10	E69271-00H00	垫 GASKET	1
12	100X5100002	螺塞 PLUG	1
13	100X5100003	垫 GASKET	1

## 01-10 多路阀操纵 HYDRAULIC CONTROL LEVER



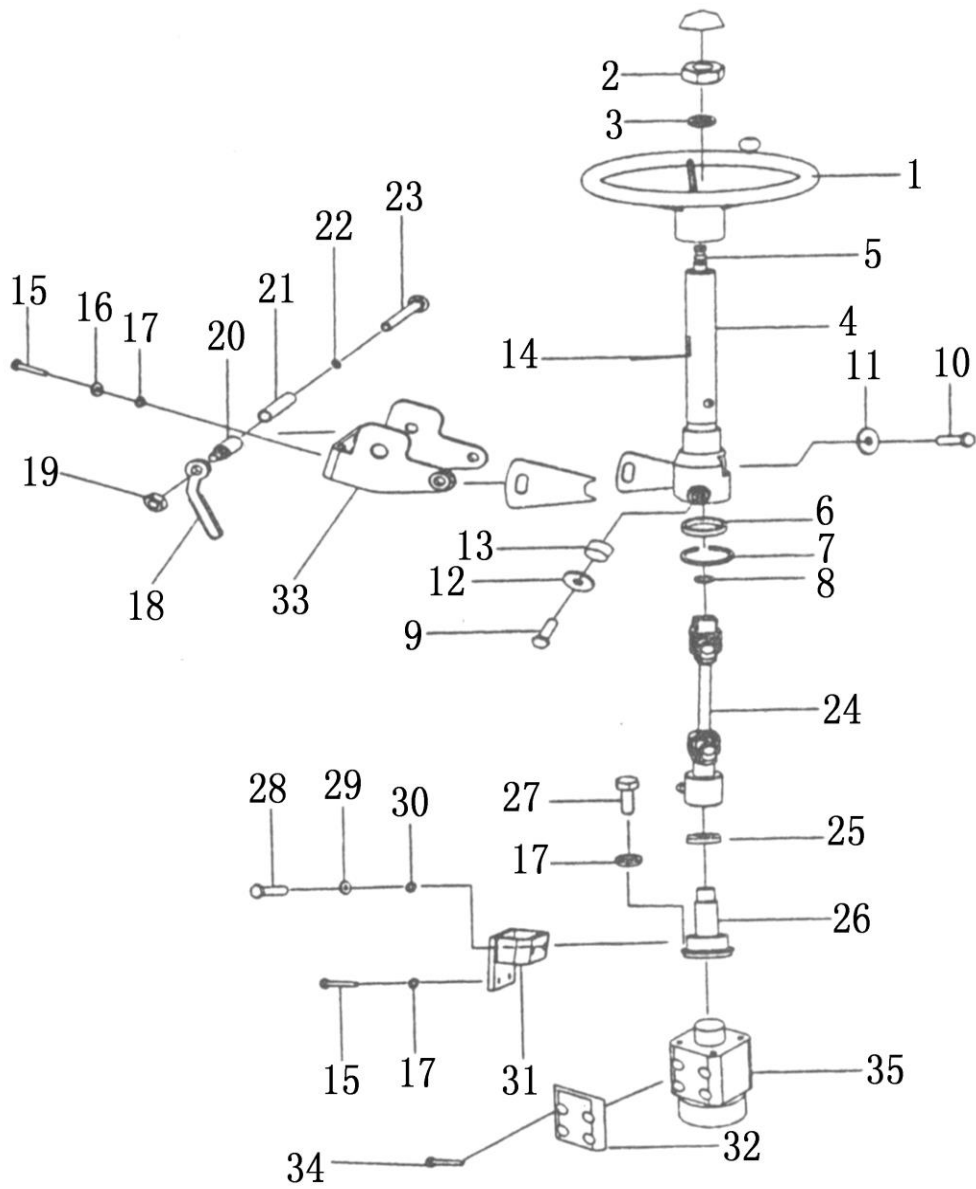
序号 NO.	零件图号 Part NO.	零件名称 Description	数量 Q'ty
1	69471-41H01	操纵杆支架 BRACKET ASSY-CONT LEVER	1
2	69452-2K400	联杆 ROD-CONTROL VALVE	1
3	69452-2K401	联杆 ROD-CONTROL VALVE	1



01-10 多路阀操纵  
HYDRAULIC CONTROL LEVER

序号 NO.	零件图号 Part NO.	零件名称 Description	数量 Q'ty
4	15RA6800002	调节螺母 BUCKLE-TURN	2
5	69455-L1100	左旋螺母 NUT	2
6	69455-10H00	轴 PIN ASSY-HINGE	1
7	GB93	垫圈 8 WASHER SPRING 8	3
8	69452-L1113	联杆 ROD-CONTROL VALVE	2
9	FZ-1.12.14.35	轴套 BUSH-PEDAL	2
10	69415-2K400	操纵杆 LEVER-CONTROL VALVE LIFT	1
11	69415-2K401	操纵杆 LEVER-CONTROL VALVE TILT	1
12	30CJA60 -00500	起升手球 KNOB-CONTROL LEVER,LIFT	1
13	30CJA60 -01200	倾斜手球 KNOB-CONTROL LEVER ,TILT	1
14	69475-36H03	盖 COVER -INSTRUMENT PANEL	1
15	GB6173	螺母 M12×1.5 NUT M12×1.5	2
16	GB882	销轴 B6×20 PIN B6×20	4
17	GB91	销 2×20 PIN 2×20	4
18	GB6170	螺母 M6 NUT M6	2
19	GB93	垫圈 6 WASHER SPRING 6	5
20	GB97.1	垫圈 6 WASHER 6	4
21	GB65	螺钉 M6×16 SCREW M6×16	4
22	GB5783	螺栓 M6×12 BOLT M6×12	1
23	GB5783	螺栓 M8×16 BOLT M8×16	3
24	GB97.1	垫 12 WASHER 12	1

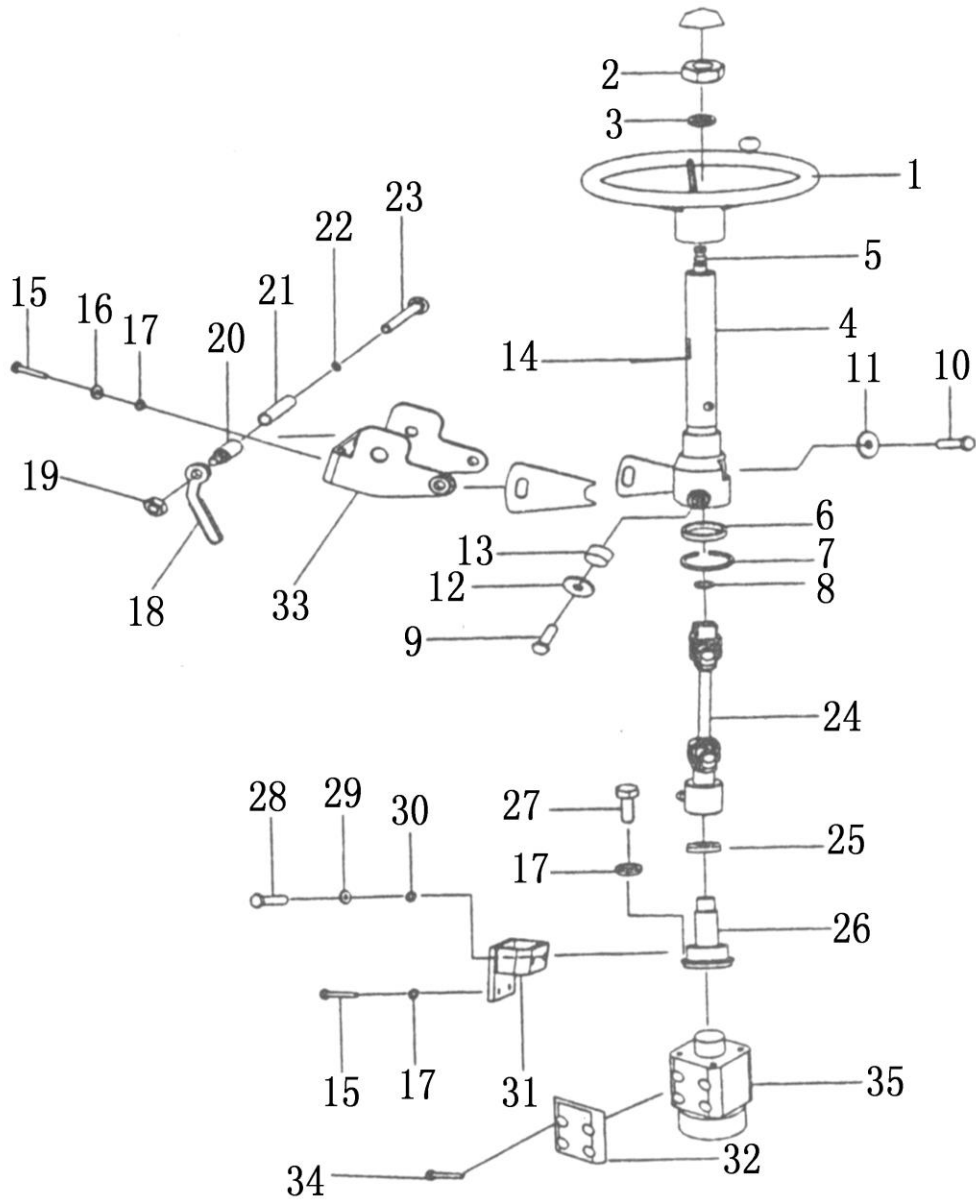
01-11 转向装置  
STEERING SYSTEM



01-11 转向装置  
STEERING SYSTEM

序号 NO.	零件图号 Part NO.	零件名称 Description	数量 Q'ty
1	DC320	方向盘总成 HANDLE WHEEL	1
2	GB6173	螺母 M14×1.5 NUT M14×1.5	1
3	GB93	垫圈 14 WASHER SPRING 14	1
4	15RCA4210000	转向管柱总成 COLUMN	1
5	15RCA4230000	转向轴 SHAFT STEERING	1
6	GB/T276	滚动轴承 6203-2Z BEARING 6203-2Z	1
7	GB893.1	挡圈 40 RING SNAP 40	1
8	GB894.1	挡圈 17 RING SNAP 17	1
9	30V42B00001	支承栓 BOLT	2
10	GB5783	螺栓 M8×25 BOLT M8×25	1
11	GB93	垫圈 8 WASHER SPRING 8	1
12	GB93	垫圈 16 WASHER SPRING 16	2
13	30X4200007	衬套 BUSHING	2
14	30X4200002	喇叭线夹 WIRE CLAMP	1
15	GB5783	螺栓 M10×25 BOLT M10×25	8
16	GB97.1	垫圈 10 WASHER 10	4
17	GB93	垫圈 10 WASHER SPRING 10	12
18	30V42B30000	锁紧手柄总成 HANDLE SYSTEM	1
19	GB6170	螺母 M14 NUT M14	1
20	30V42B00002	锁紧柱 LOCK CYLINDER	1
21	30V42B00003	钢管拔 22×3.5-91 STEEL PIPE 22×3.5-91	1

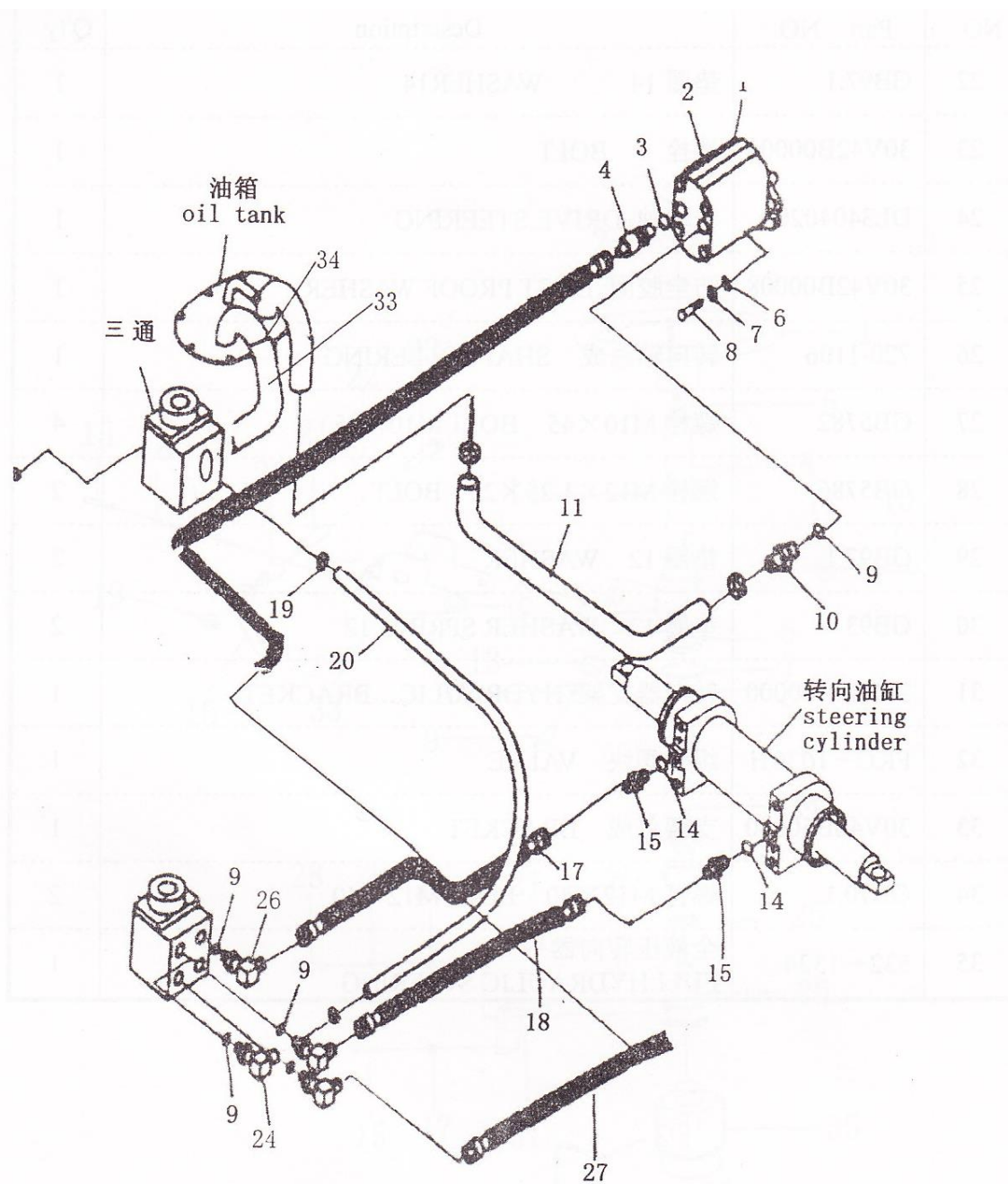
01-11 转向装置  
STEERING SYSTEM



01-11 转向装置  
STEERING SYSTEM

序号 NO.	零件图号 Part NO.	零件名称 Description	数量 Q'ty
22	GB97.1	垫圈 14 WASHER 14	1
23	30V42B00004	螺栓 BOLT	1
24	DL3404020A	传动轴 DRIVE,STEERING	1
25	30V42B00008	防尘胶圈 DUST PROOF WASHER	1
26	720-1106	转向轴总成 SHAFT,STEERING	1
27	GB5782	螺栓 M10×45 BOLT M10×45	4
28	GB5786	螺栓 M12×1.25×25 BOLT M12×1.25×25	2
29	GB97.1	垫圈 12 WASHER 12	2
30	GB93	垫圈 12 WASHER SPRING 12	2
31	30V42B40000	转向器支架 HYDRAULIC BRACKET	1
32	FKC-1030H	组合阀块 VALVE	1
33	30V42B50000	支架总成 BRACKET	1
34	GB70.1	螺钉 M12×40 BOLT M12×40	2
35	532-1324	全液压转向器 FULL HYDRAULIC STEERING	1

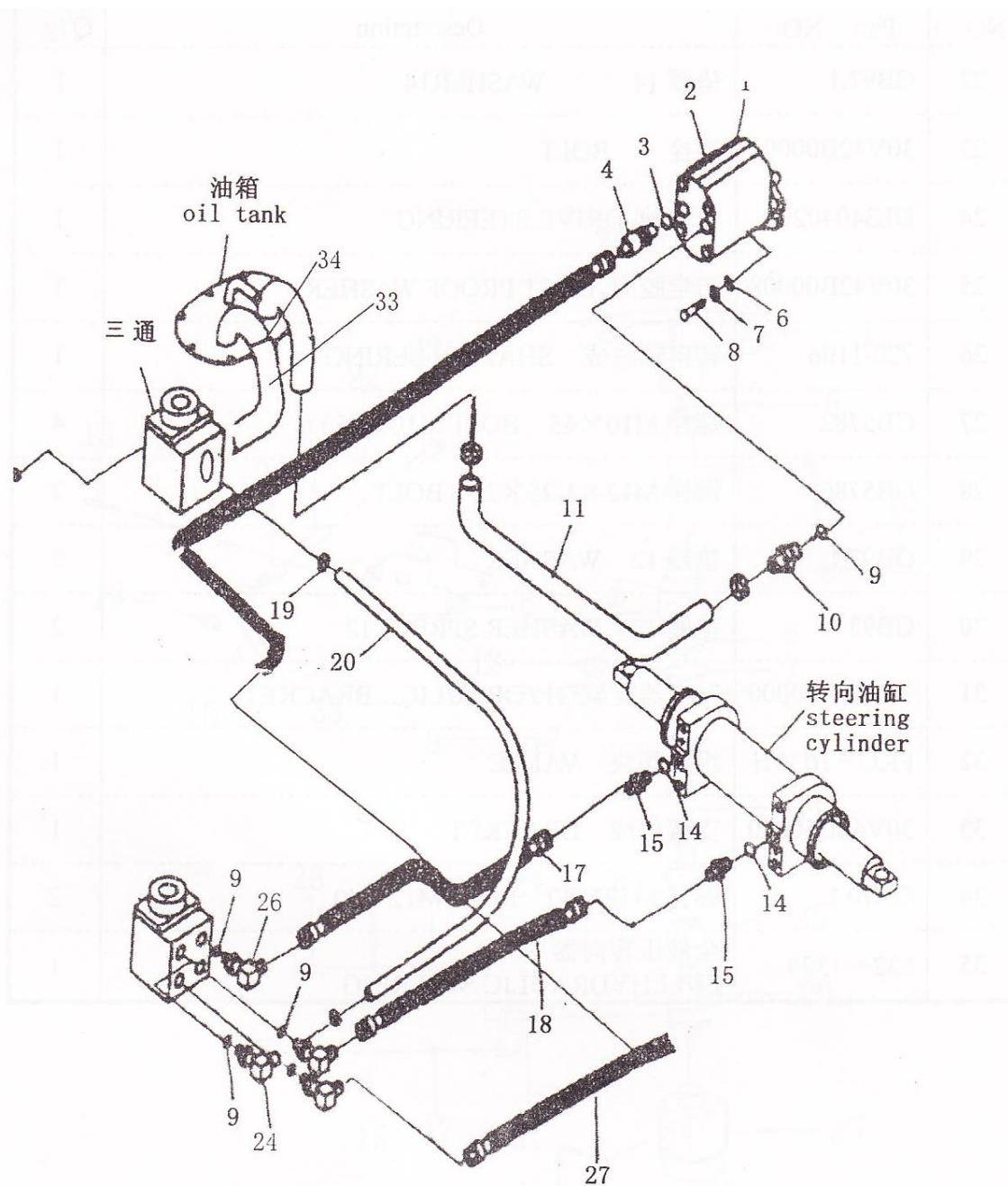
01-12 转向系统  
STEERING OIL PIPING



01-12 转向系统  
STEERING OIL PIPING

序号 NO.	零件图号 Part NO.	零件名称 Description	数量 Q'ty
1	15RB7000002	垫 GASKET	1
2	CBW-F306ALB	齿轮泵 (转向) GEAR PUMP	1
3	JB982	垫圈 18 WASHER 18	1
4	25RC7000006	接头 CONNECTOR	1
6	GB97.1	垫圈 8 WASHER 8	2
7	GB93	垫圈 8 WASHER 8	4
8	GB70	螺栓 M8×25 BOLT M8×25	2
9	JB982	垫圈 20 WASHER 20	5
10	15RB7000001	接头 CONNECTOR	1
11	30RC7020000	吸油管 PIPING	1
14	GB3452.1	O 形密封圈 14×2.65 O RING 14×2.65	2
15	J20.3-TB4-10b	管接头 10b CONNECTOR 10b	2
17	25RC7030000A	转向胶管 HOSE	1
18	30RC7050000	转向胶管 HOSE	1
19	Q/DC.J.05611	管夹 26 CLAMP 26	2
20	HG4-761-74	回油管 16×1150 HOSE 16×1150	1

01-12 转向系统  
STEERING OIL PIPING

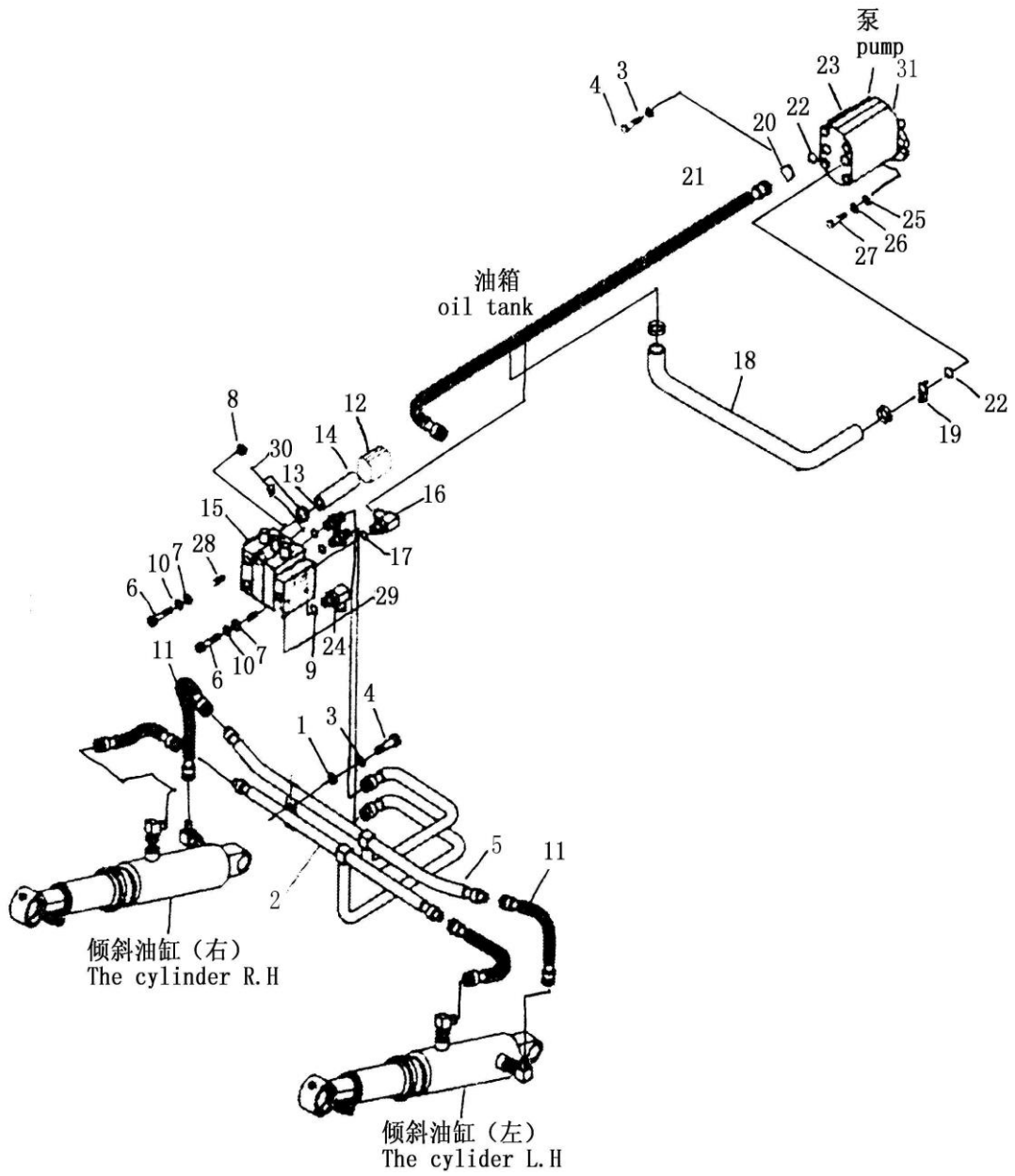




01-12 转向系统  
STEERING OIL PIPING

序号 NO.	零件图号 Part NO.	零件名称 Description	数量 Q'ty
24	J20.3-TB1-8c	管接头体 8c CONNECTOR 8c	3
26	15RB7000007	接头 CONNECTOR	1
27	25RC7010000A	转向器进油胶管 HOSE	1
28	GB5783	螺栓 M8×60 BOLT M8×60	2
33	30RC7000001	回油管 HOSE	1
34	Q/DC.J.05611	管夹 47 CLAMP 47	6

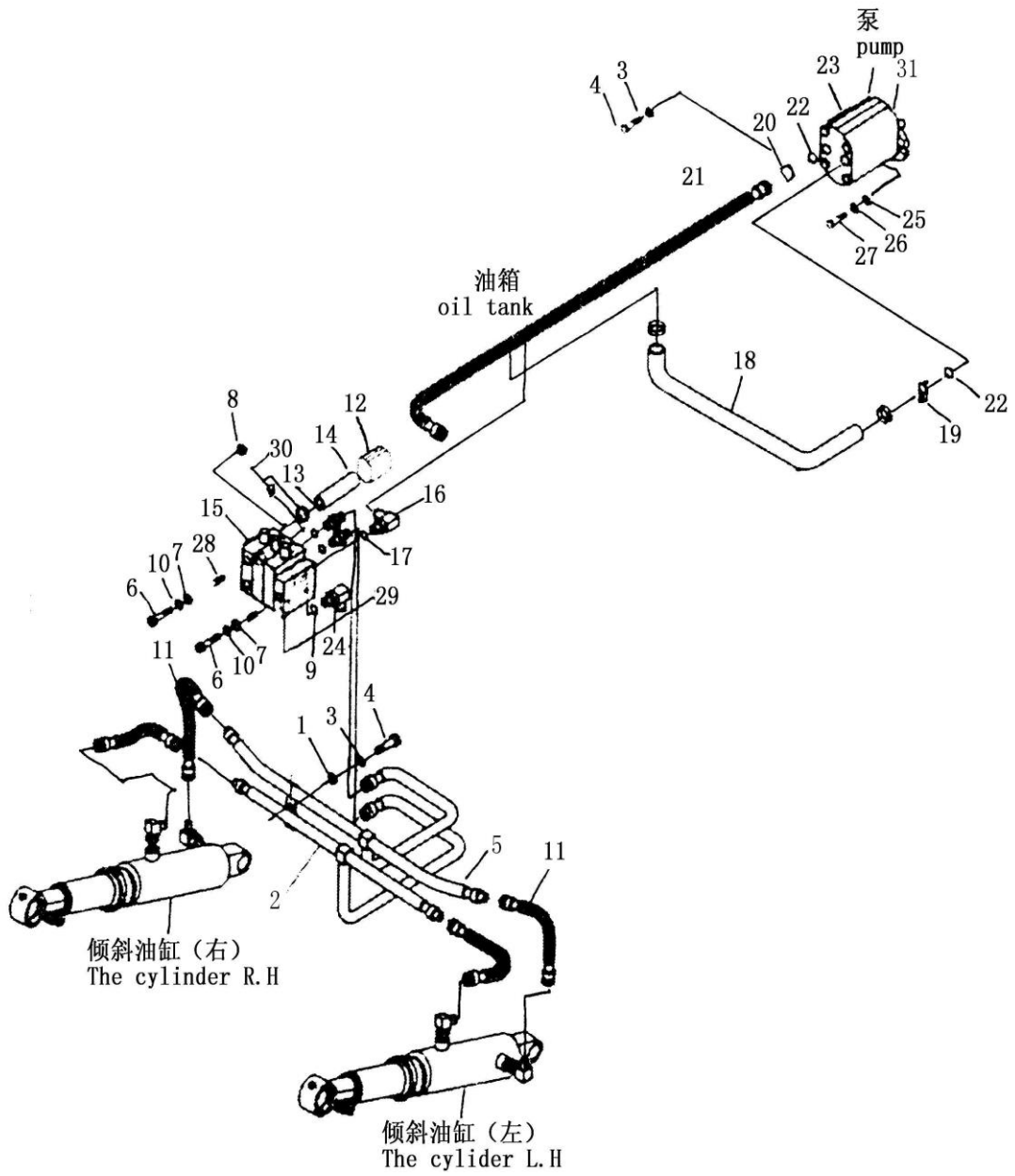
# 01-13 倾斜管路系统 TILT OIL PIPING



01-13 倾斜管路系统  
TILT OIL PIPING

序号 NO.	零件图号 Part NO.	零件名称 Description	数量 Q'ty
1	GB97.1	垫圈 8 WASHER 8	2
2	69616-35H01	倾斜油管总成 PIPE ASSY-TILT	1
3	GB93	垫圈 8 WASHER SPRING 8	10
4	GB5783	螺栓 M8×20 BOLT M8×20	10
5	69615-35H01	倾斜油管总成 PIPE ASSY-TILT	1
6	GB5783	螺栓 M10×50 BOLT M10×50	3
7	60392-L4000	垫 GASKET	3
8	GB6170	螺母 M10 NUT M10	3
9	GB1235	O 型密封圈 22×2.4 O RING 2×2.4	3
10	69391-L4000	隔套 BUSHING	3
11	30RC7030000	倾斜缸胶管 PIPE&HOSE ASSY-TILT	4
12	15RB7010000	四通 CONNECTOR	1
13	15RA7000009	接头 CONNECTOR	2
14	HG4-761-74	回油管 32×1200 HOSE 32×1200	1
15	15RA6800001	板 BOARD	1
16	15RA7000007	接头 CONNECTOR	1
17	GB3452.1	O 型密封圈 18×2.65 O RING 18×2.65	2
18	30RC7000002	吸油管 PIPE ASSY-HYDRAULIC TANK	1
19	15RB7030000	法兰 FLANGE	1
20	15RB7020000	法兰 FLANGE	2
21	30RC7010000	高压胶管 HOSE ASSY-LIFT	1

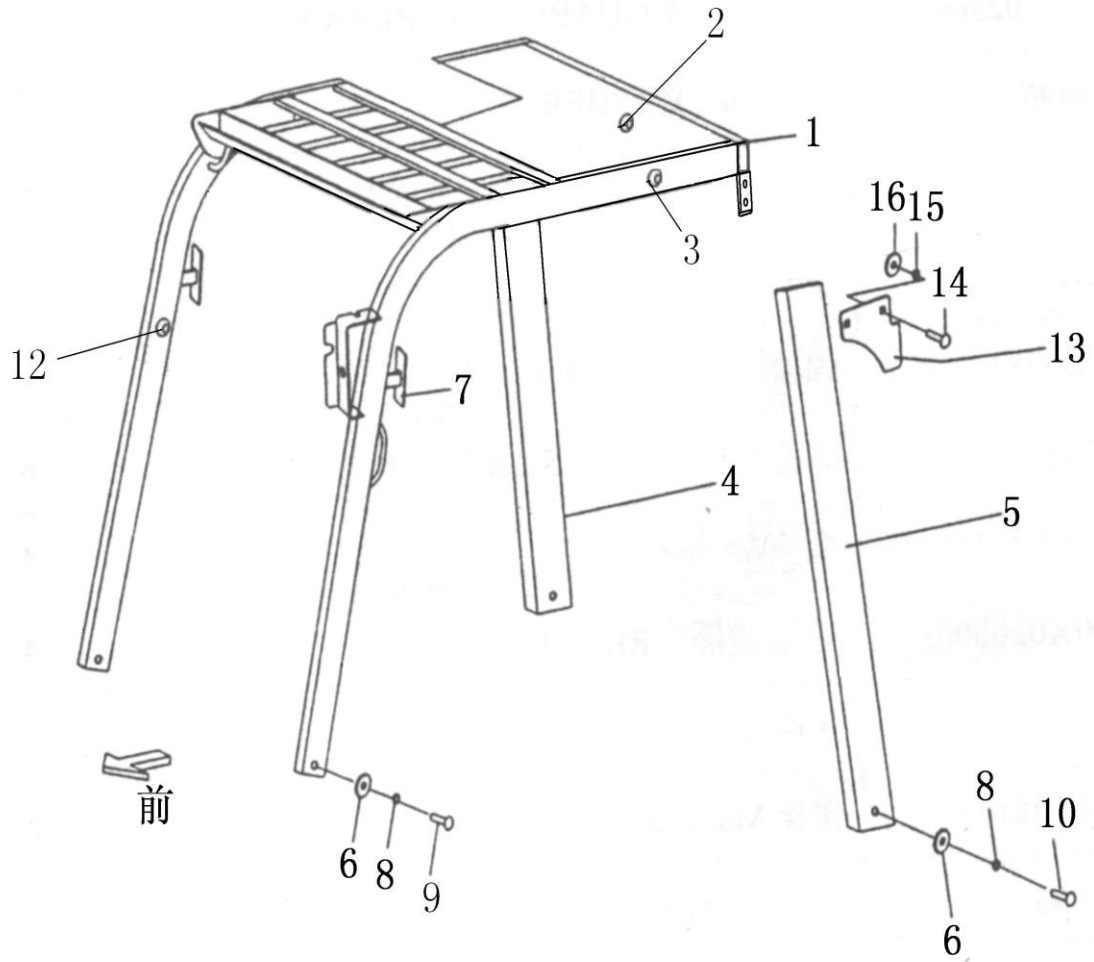
# 01-13 倾斜管路系统 TILT OIL PIPING



01-13 倾斜管路系统  
TILT OIL PIPING

序号 NO.	零件图号 Part NO.	零件名称 Description	数量 Q'ty
22	GB1235	O型密封圈 35×3.1 O RING35×3.1	2
23	CBTD-F420-AFH4	齿轮泵 (起升) GEAR PUMP	1
24	15RA7000013	接头 CONNECTOR	1
25	GB97.1	垫圈 10 WASHER	8
26	GB93	垫圈 10 WASHER	5
27	GB5783	螺栓 M10×30 BOLT M10×30	2
28	69394-L4000	套 BUSHING	3
29	CDB-F15DD-02a	多路换向阀 CONTROL VALVE	1
30	15RA7000008	接头 CONNECTOR	1
31	15RB7000004	垫 GASKET	1

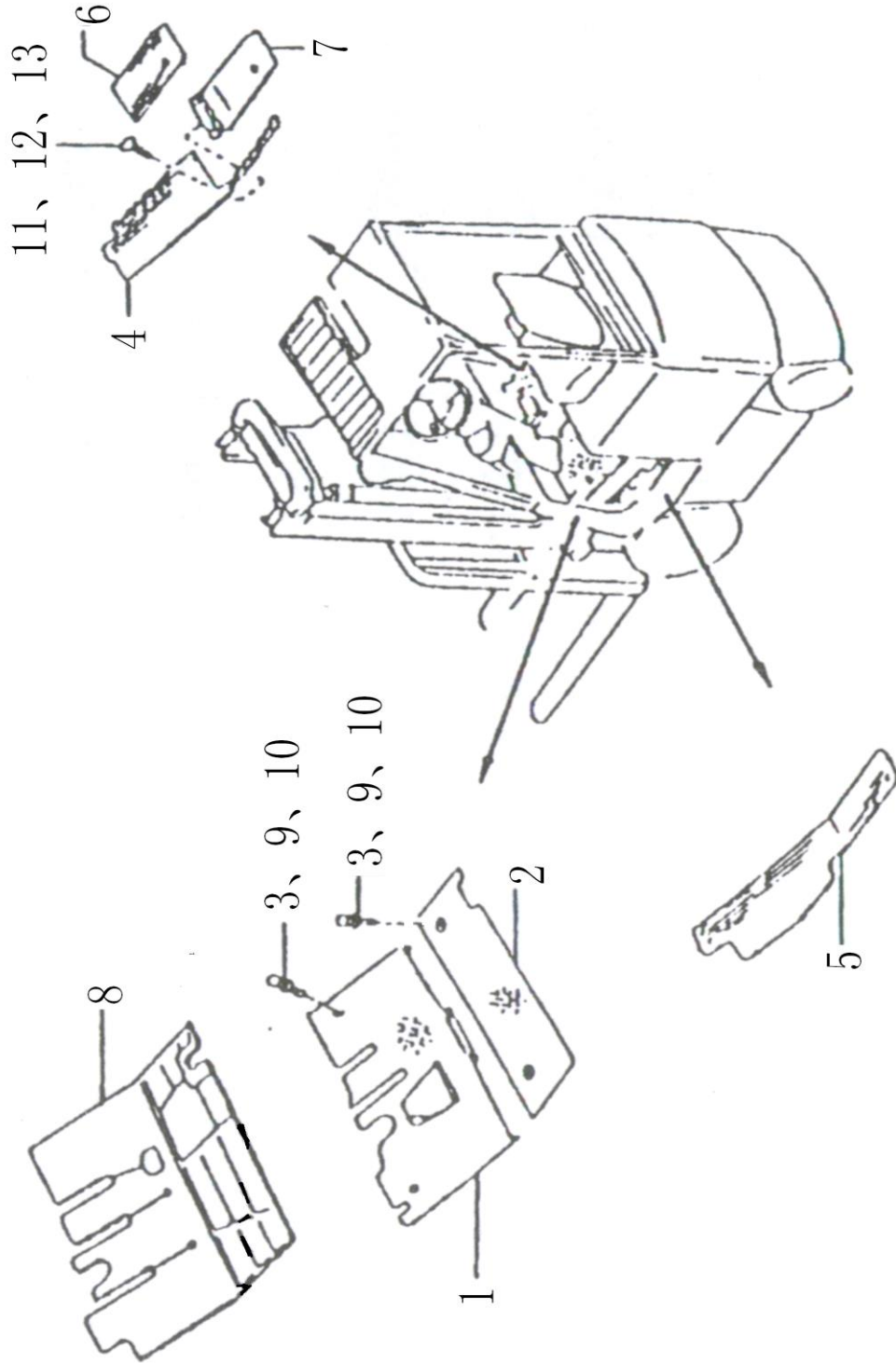
01-14 护顶架  
OVER HEAD GUARD



01-14 护顶架  
OVER HEAD GUARD

序号 NO.	零件图号 Part NO.	零件名称 Description	数量 Q'ty
1	30RC02A10000	顶架 GUARD ASSY-OVER HEAD,UPPER	1
2	Q/DC.J.056102	胶环 14×7 GHM WREATH 14×7	1
3	Q/DC.J.056102	胶环 14×2 GHM WREATH 14×2	1
4	25RC0240000	右后柱总成 GUARD ASSY-REAR PILLER RH	1
5	25RC0230000	左后柱总成 GUARD ASSY-REAR PILLER LH	1
6	GB96.1	垫圈 16 WASHER 16	6
7	CA-1046	反光镜 MIRROR ASSY-BACK	2
8	GB93	垫圈 16 WASHER SPRING 16	10
9	GB5783	螺栓 M16×30 BOLT M16×30	4
10	GB5786	螺栓 M16×1.5×35 BOLT M16×1.5×35	6
12	30X0200003	出线胶圈 RING.,RUBBER	4
13	15RA0260000	挂钩 CATCH ASSY-TOP PANEL	1
14	GB5781	螺栓 M16×12 BOLT M16×12	2
15	GB93	垫圈 6 WASHER	2
16	GB97.1	垫圈 6 WASHER	2

01-15 底板装配  
FLOOR PANEL

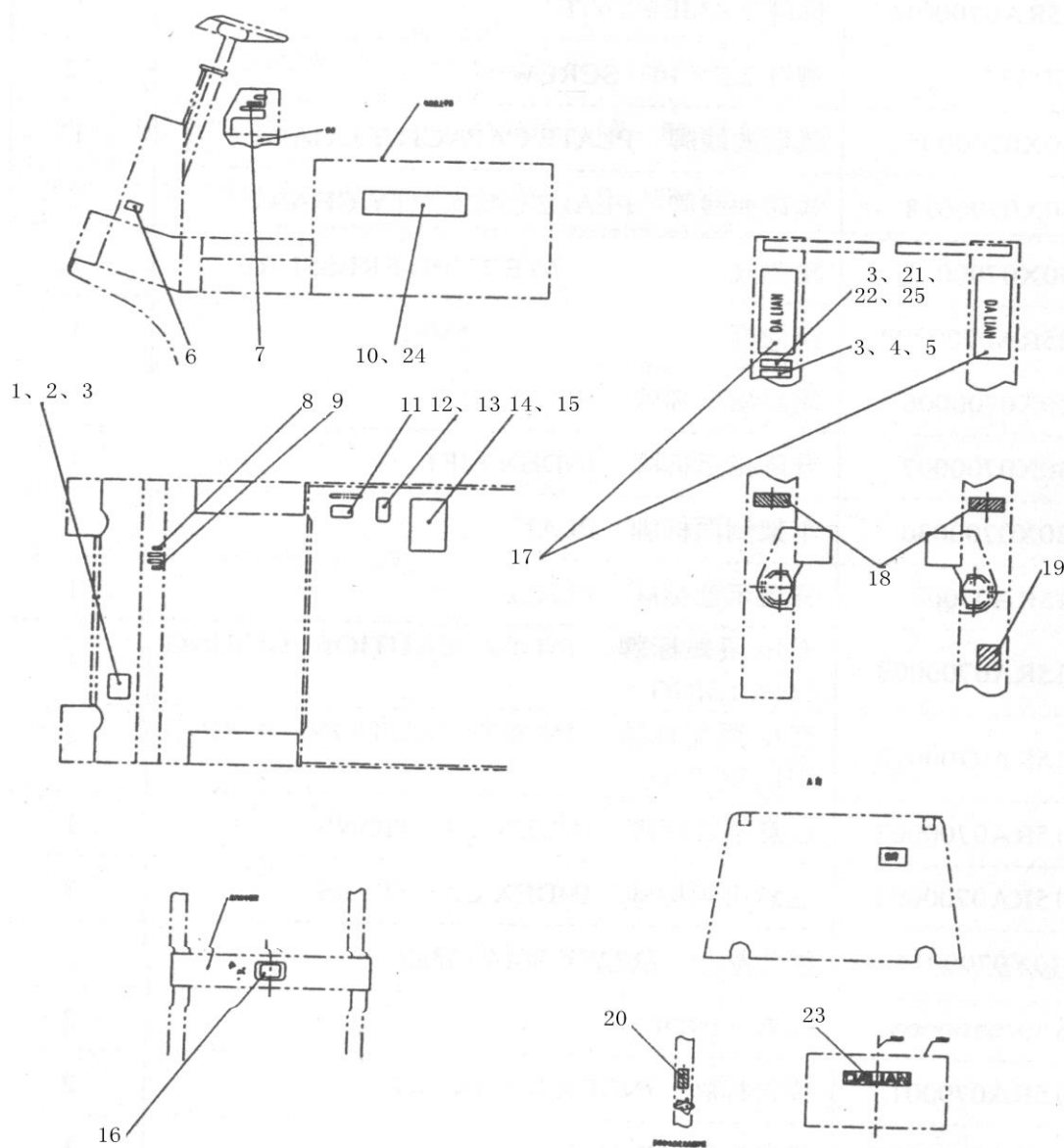




01-15 底板装配  
FLOOR PANEL

序号 NO.	零件图号 Part NO.	零件名称 Description	数量 Q'ty
1	30RC5510000	前底板总成 BOARD ASSY-FRONT FLOOR	1
2	30RC5530000	后底板总成 BOARD ASSY-REAR FLLOOR	1
3	GB5783	螺栓 M8×20 BOLT M8×20	6
4	30RC5500003	底板垫 (右) MAT-REAR FLOOR RH	1
5	30RC5500001	底板垫 (左) MAT-REAR FLOOR LH	1
6	30RC5500004	盖板垫 MAT-COVER	1
7	30RC5520000	加油孔盖 LID-HYDRAULIC OIL FILLER	1
8	30RC5500002	底板垫 MAT ASSY-FLOOR	1
9	GB93	垫圈 8 WASHER SPRING 8	12
10	GB96.1	垫圈 8 WASHER 8	4
11	GB5781	螺栓 M6×20 BOLT M6×20	2
12	GB6170	螺母 M6 NUT M6	2
13	GB93	垫圈 6 WASHER SPRING 6	2

# 01-16 标牌 INDEX

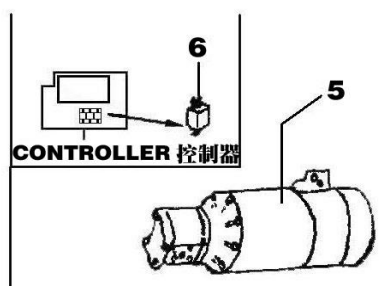
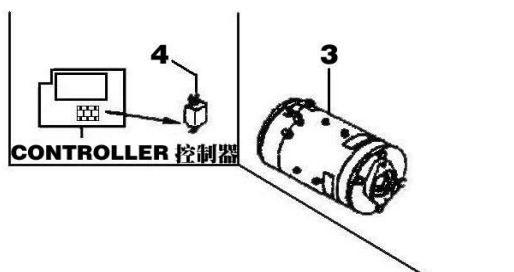
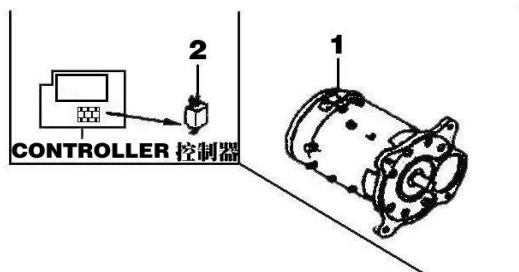


序号 NO.	零件图号 Part NO.	零件名称 Description	数量 Q'ty
1	15RA0700002	标牌 NAME PLATE	1
2	15RA0700016	标牌 NAME PLATE	1
3	GB827	铆钉 2.5×10 SCREW 2.5×10	12
4	30X0700005	载荷曲线牌 PLATE CAPACITY CHART	1

01-16 标牌  
INDEX

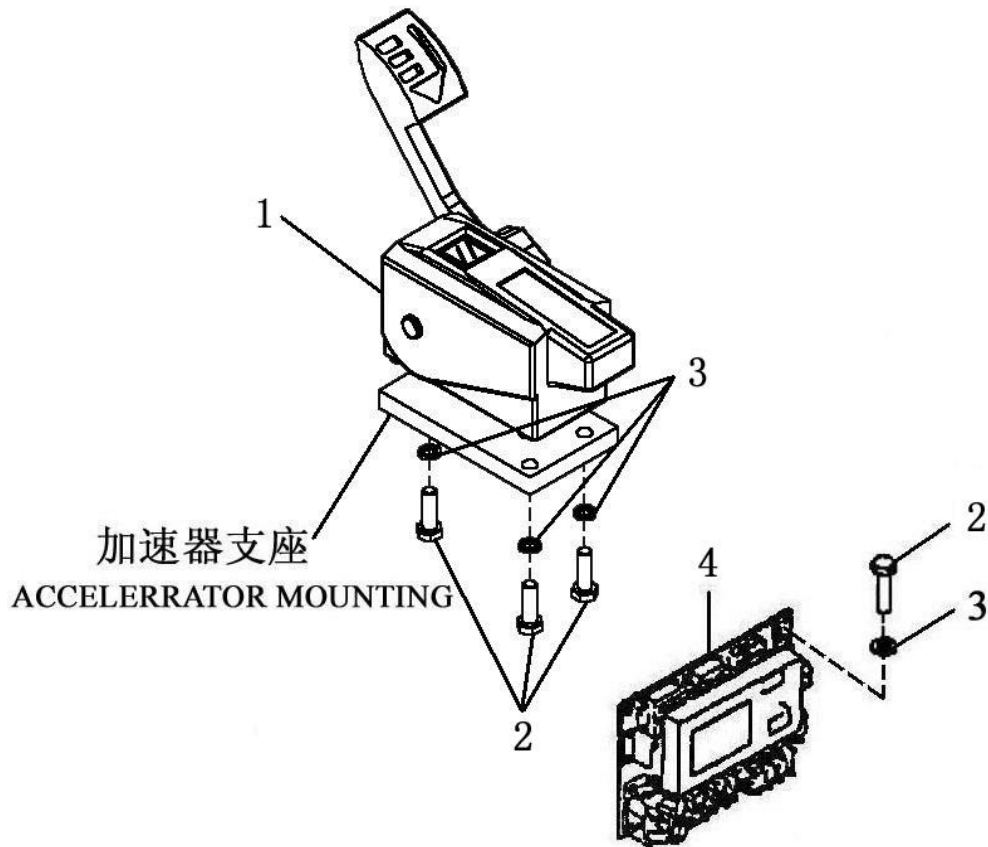
序号 NO.	零件图号 Part NO.	零件名称 Description	数量 Q'ty
5	30X0700018	载荷曲线牌 PLATE CAPACITY CHART	1
6	30X0700003	轮胎气压标牌 PLATE TYRE-PRESSURE	1
7	25RA0700008	换向标牌 INDEX TRAVEL	1
8	30X0700006	倾斜指示标牌 INDEX TILT	1
9	30X0700007	升降指示标牌 INDEX LIFT	1
10	30X0700036	车架侧面标牌 PLATE	2
11	15RA0700023	开盖示意标牌 PLATE	1
12	15RA0700009	充电须知标牌 CAUTION DURING CHARGING	1
13	15RA0700019	充电须知标牌 INDEX CAUTION DURING CHARGING	1
14	15RA0700003	注意事项标牌 INDEX CAUTIONS	1
15	15RA0700004	注意事项标牌 INDEX CAUTIONS	1
16	30X0700014	警告标牌 INDEX WARNING	1
17	15W0700003	标牌 INDEX	2
18	15RA0700015	警告标牌 INDEX WARNING	2
19	15RA0700026	起吊标牌 INDEX	1
20	15RA0700025	标牌 INDEX	1
21	DCJ7.02	产品商标 NAME PLATE	1
22	GB67	螺钉 M5×12 SCREW M5×12	2
23	15RA0700027	平衡重标牌 INDEX	1
24	30X0700037	车架侧面标牌 PLATE	2
25	20X0700051	CE 标牌 PLATE CE	1

01-17-01 电机  
MOTOR



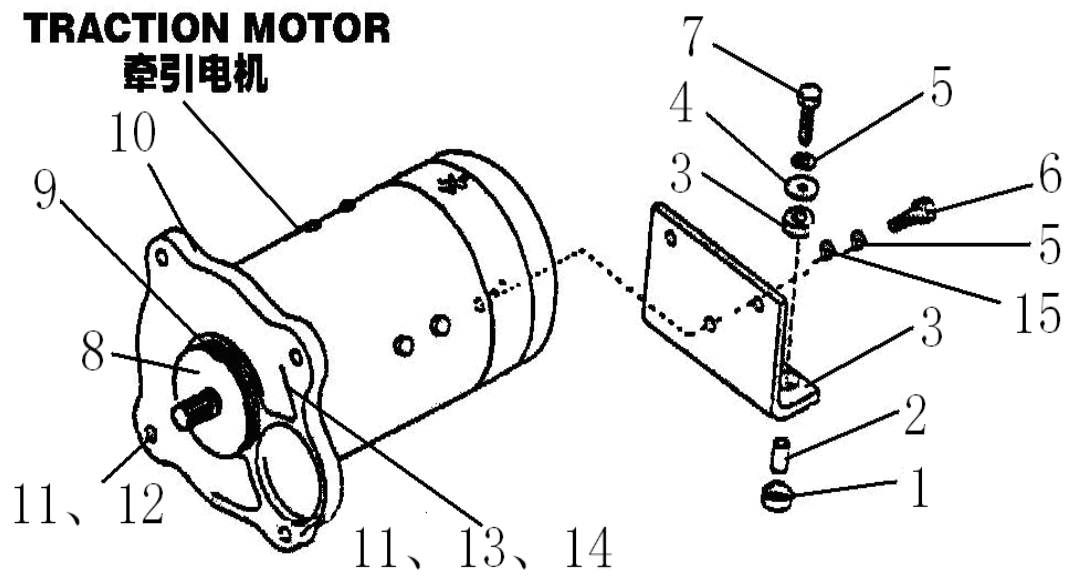
序号 NO.	零件图号 Part NO.	零件名称 Description	数量 Q'ty
1	XQ-10-1G	牵引电机 MOTOR ASSY-TRACTION	1
2	400A	牵引电机保险丝 GUSE-T/MOTR	1
3	XQD-10-3	液压电机 MOTOR ASSY-PUMP	1
4	400A	液压电机保险丝 FUSE-P/MOTOR	1
5	XQ-1.35	转向电机 MOTOR ASSY-POWER STEERING	1
6	50A	转向电机保险丝 FUSE-ST/MOTOR	1

01-17-02 加速器及控制器  
ACCELERATOR&CONTROLLER



序号 NO.	零件图号 Part NO.	零件名称 Description	数量 Q'ty
1	COPP13	加速器 ACCELERATOR ASSY	1
2	GB5783	螺栓 M8×25 BOLT M8×25	3
3	GB93	垫圈 8 WASHER SPRING 8	3
4	H2B-80/601	斩波器总成 CONTROLLER	1

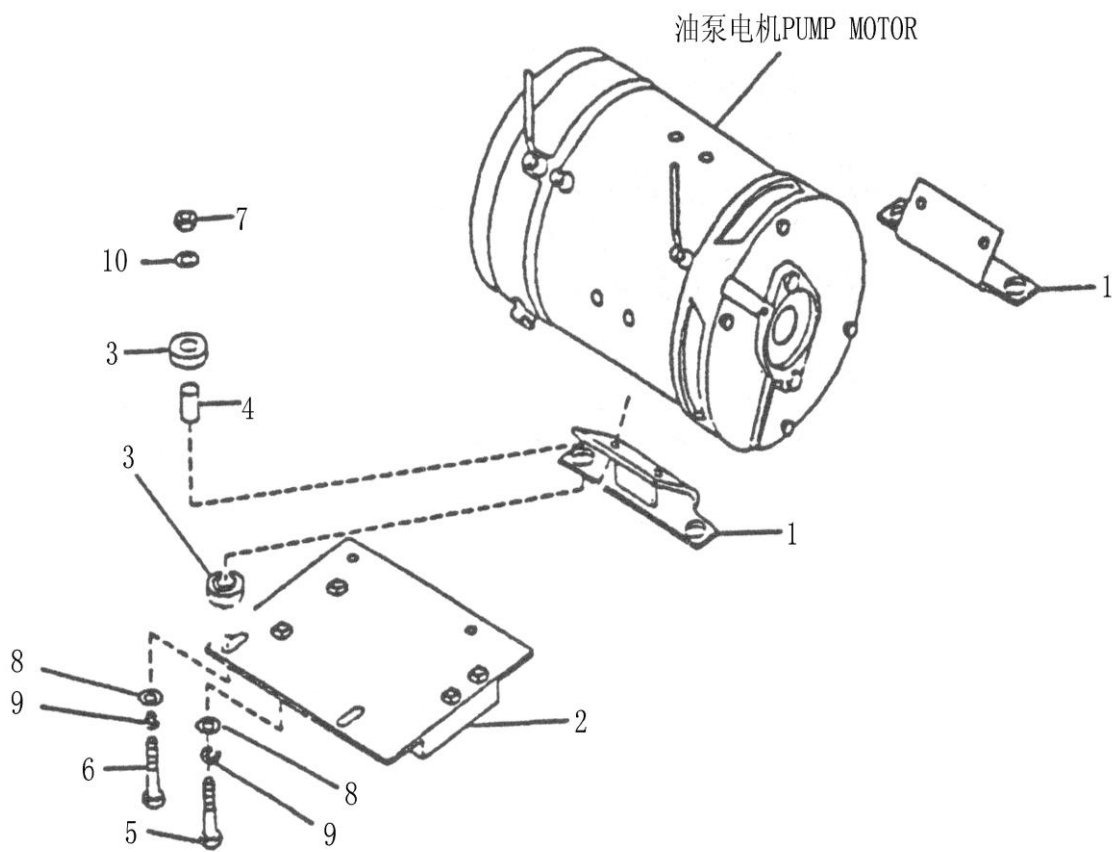
01-17-03 牵引电机支座  
TRACTION MOTOR MOUNTING



01-17-03 牵引电机支座  
TRACTION MOTOR MOUNTING

序号 NO.	零件图号 Part NO.	零件名称 Description	数量 Q'ty
1	15RA8007102	橡胶垫圈 INSULATOR	4
2	15RA8007103	限位套筒 COLLAR	2
3	30RC8061000	牵引电机支座 BRACKET-TRACTION MOTOR MTG	1
4	15RA8007101	平垫圈 WASHER	2
5	GB93	垫圈 14 WASHER SPRING 14	5
6	GB5783	螺栓 M14×1.5×40 BOLT M14×1.5×40	3
7	GB5785	螺栓 M14×1.5×60 BOLT M14×1.5×60	2
8	GB/T 9877.1	油封 SD32×52×12 OIL SEAL SD32×52×12	1
9	GB3452	O 型密封圈 122×3.55 O RING 122×3.55	1
10	30RC8060001	联接盘 PLATE	1
11	GB93	垫圈 16 WASHER SPRING 16	5
12	GB5785	螺栓 M16×1.5×55 BOLT M16×1.5×55	4
13	GB5783	螺栓 M16×35 BOLT M16×35	5
14	GB97.1	垫圈 16 WASHER 16	9
15	GB97.1	垫圈 14 WASHER 14	5

01-17-04 液压电机支座  
PUMP MOTOR MOUNTING

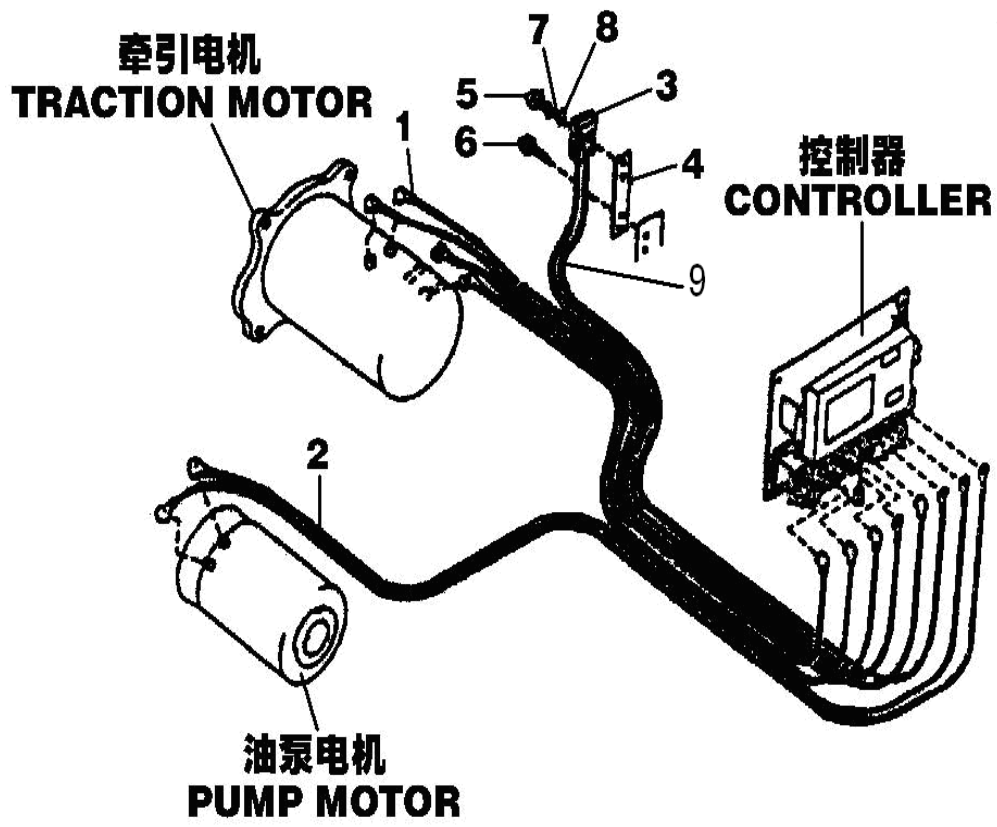




01-17-04 液压电机支座  
PUMP MOTOR MOUNTING

序号 NO.	零件图号 Part NO.	零件名称 Description	数量 Q'ty
1	30RC8030000	液压电机支座总成 BRACKET—PUMP MOTOR ASSY.	1
2	30RC8031000	液压电机支座 BRACKET-PUMP MOTOR	1
3	15RC8001001	橡胶垫 INSULATOR	8
4	15RC8001002	限位套筒 COLLAR	4
5	GB5785	螺栓 M10×1×40 BOLT M10×1×40	4
6	GB5782	螺栓 M10×60 BOLT M10×60	4
7	GB6170	螺母 M10 NUT 10	8
8	GB97.1	垫圈 10 WASHER 10	8
9	GB93	垫圈 10 WASHER 10	8
10	GB96.1	垫圈 10 WASHER 10	8

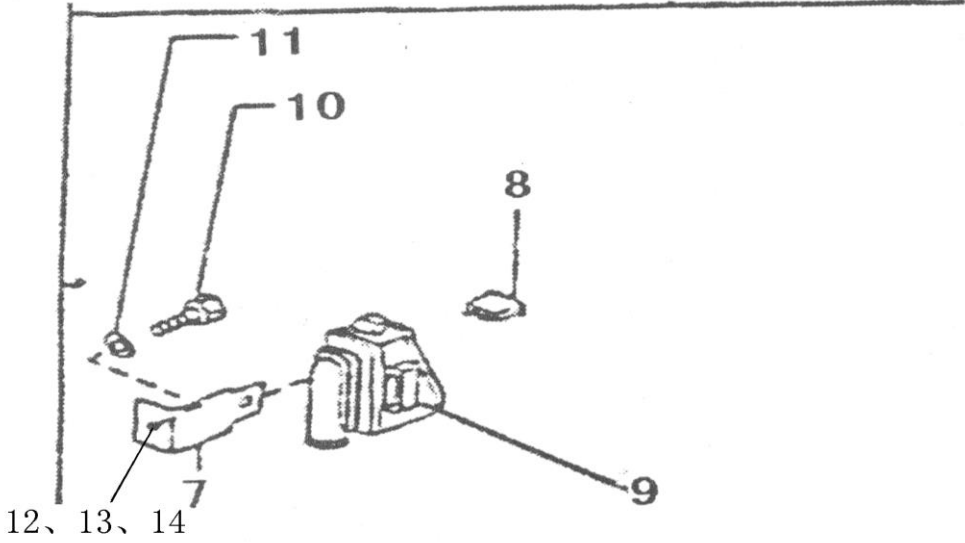
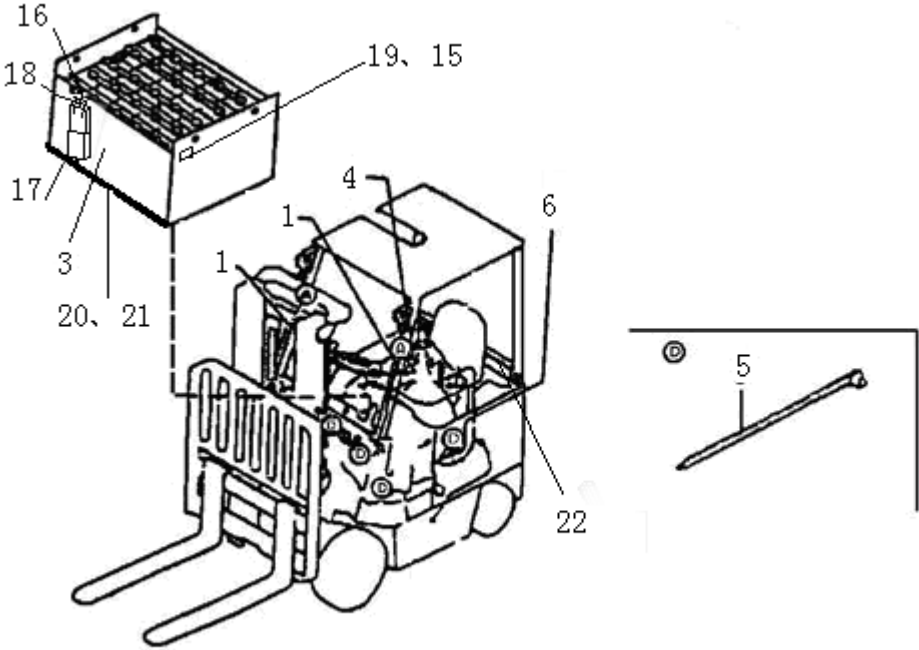
01-17-05 控制器支座及线缆  
CONTROLLER MOUNTING & MAIN HARNESS



01-17-05 控制器支座及线缆  
CONTROLLER MOUNTING & MAIN HARNESS

序号 NO.	零件图号 Part NO.	零件名称 Description	数量 Q'ty
1		牵引机电缆 CABLE-TRACTION MOTOR	4
2		液机电缆 CABLE-PUMP MOTOR	2
3	SB350A	电源插座 PLUG-ASSY-BATTERY	1
4	15RA8000003	固定板 BRACKET-BATTERY PLUG	1
5	GB67	螺钉 M6×30 SCREW M6×30	2
6	GB67	螺钉 M6×16 SCREW M6×16	2
7	GB93	垫圈 6 WASHER SPRING 6	2
8	GB97.1	垫圈 6 WASHER 6	2
9	30RC8010000	电源电缆总成 CABLE	1

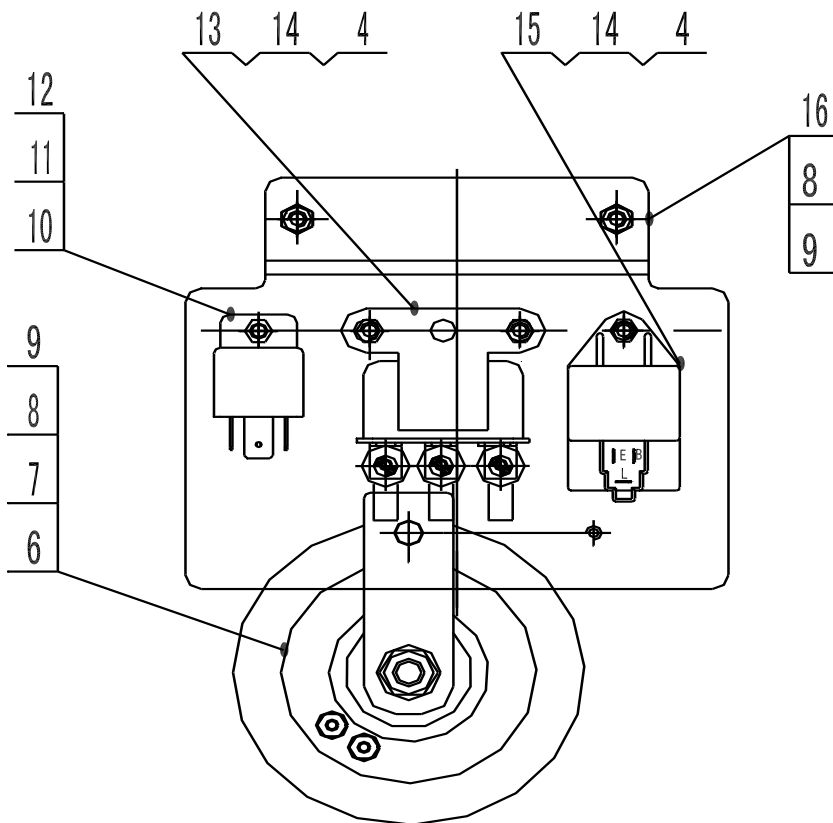
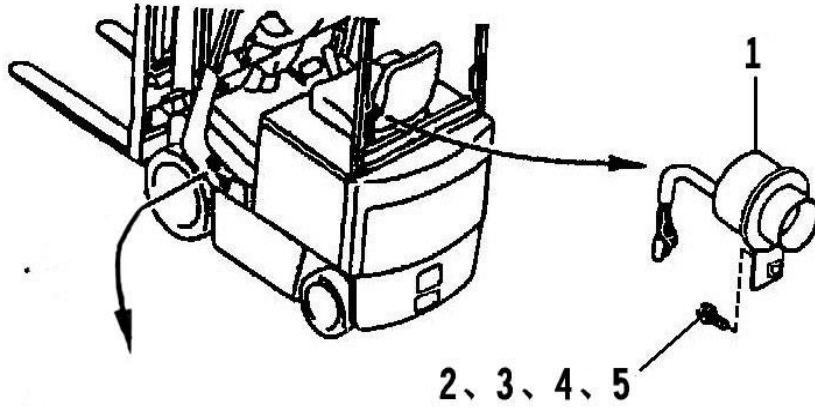
01-17-06 线束装配  
WIRING (BODY)



01-17-06 线束装配  
WIRING (BODY)

序号 NO.	零件图号 Part NO.	零件名称 Description	数量 Q'ty
1	15RCA8030000	前线束 HARNESS-GUARD	1
3	30D580	蓄电池总成 BATTERY	1
4	30RC8050000	主线束 HARNESS ASSY-MAIN	1
5	ZD200×8	扎带 CLIP	5
6	15RCA8020000	后线束 REAR HARNESS	1
7	15RC8000002	保险丝盒支架 BRACKET-FUSE BLOCK	1
8	BX2011/ 15A	保险片 FUSE	1
9	BX2051	五路熔断器 FUSE,FIVE ROUTES	1
10	GB5781	螺钉 M8×12 SCREW M8×12	1
11	GB93	垫圈 8 WASHER SPRING 8	1
12	GB67	螺钉 M6×16 SCREW M6×16	1
13	GB97.1	垫圈 6 WASHER 6	1
14	GB93	垫圈 6 WASHER 6	1
15	GB67	螺钉 M6×20 SCREW M6×20	2
16	30RC8080000	蓄电池电缆总成 CABLE	1
17	50U5143000	搭扣 BUTTON	1
18	995G2	手柄 HANDLE	1
19	15RC8000001	胶垫 MATTRESS	2
20	30RC8000001	蓄电池盒垫 MATTRESS	1
21	30RC8000002	蓄电池盒垫 MATTRESS	1
22	15RA8016000	电瓶盒固定杆 POLE	1

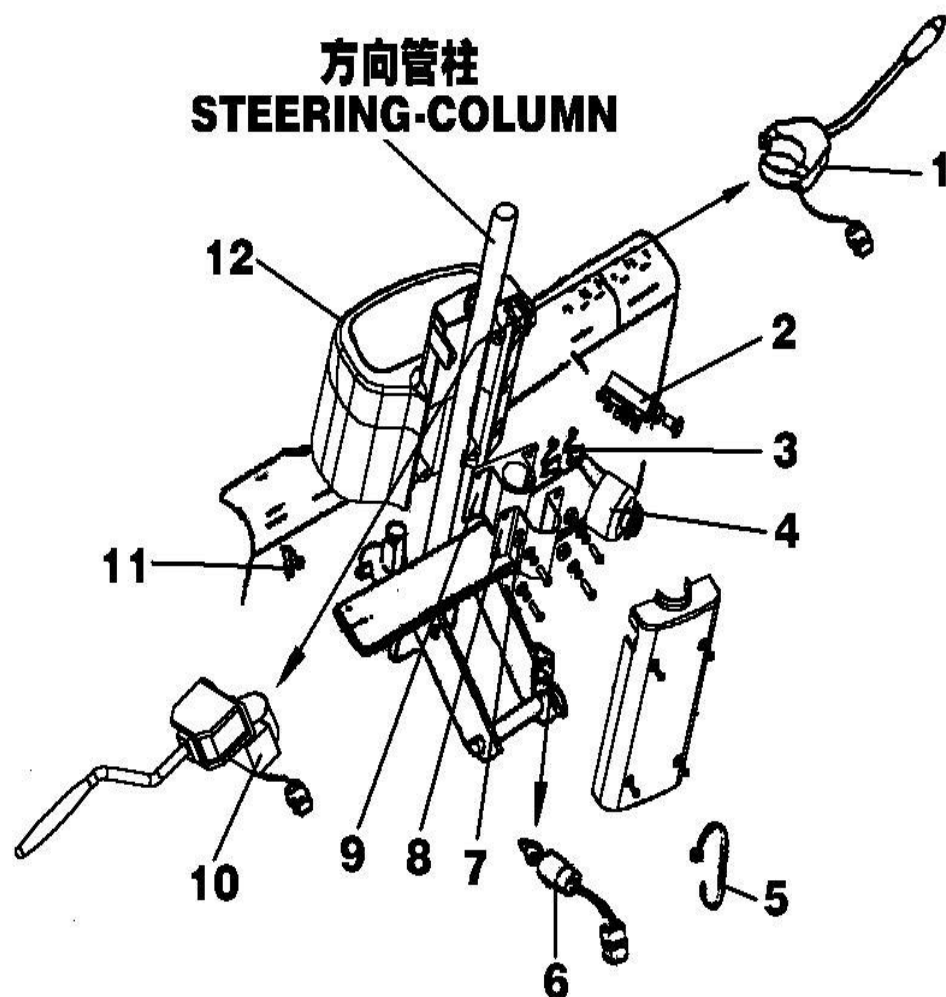
01-17-07 电气装配  
ELECTRICAL UNIT



01-17-07 电气装配  
ELECTRICAL UNIT

序号 NO.	零件图号 Part NO.	零件名称 Description	数量 Q'ty
1	DJB-24B	倒车蜂鸣器 HORN ASSY-BACK	1
2	GB5781	螺钉 M6×16 SCREW M6×16	1
3	GB97.1	垫圈 6 WASHER 6	1
4	GB93	垫圈 6 WASHER SPRING 6	4
5	GB6170	螺母 M6 NUT 6	1
6	DL224EG	喇叭 HORN ASSY-ELECTRIC	1
7	GB6170	螺母 M8 NUT M8	1
8	GB5781	螺栓 M8×20 BOLT M8×20	3
9	GB93	垫圈 8 WASHER SPRING 8	3
10	HG4190/024-1Z9	继电器 RELAY	1
11	GB67	螺钉 M5×12 SCREW M5×12	1
12	GB97.1	垫圈 5 WASHER 5	1
13	JL2-24	喇叭继电器 RELAY-1M	1
14	GB67	螺钉 M6×12 SCREW M6×12	3
15	SG252	闪光器 UNIT ASSY-FLASHER	1
16	25RC8000001	支架 SHELF	1

01-17-08 开关及组合仪表  
SWITCH&COMBINED METER

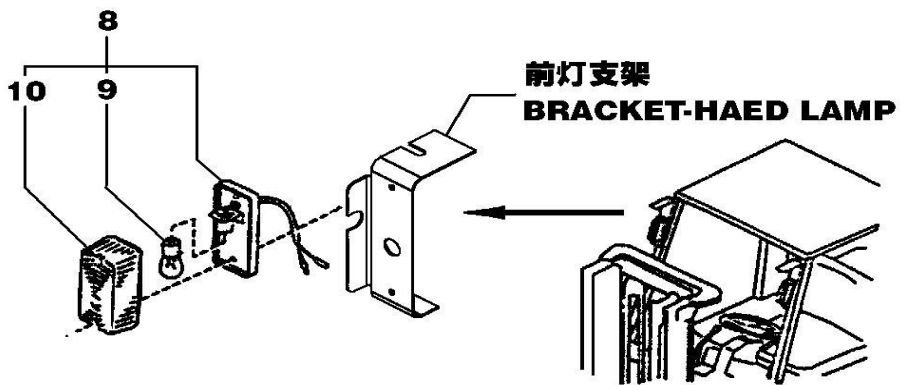
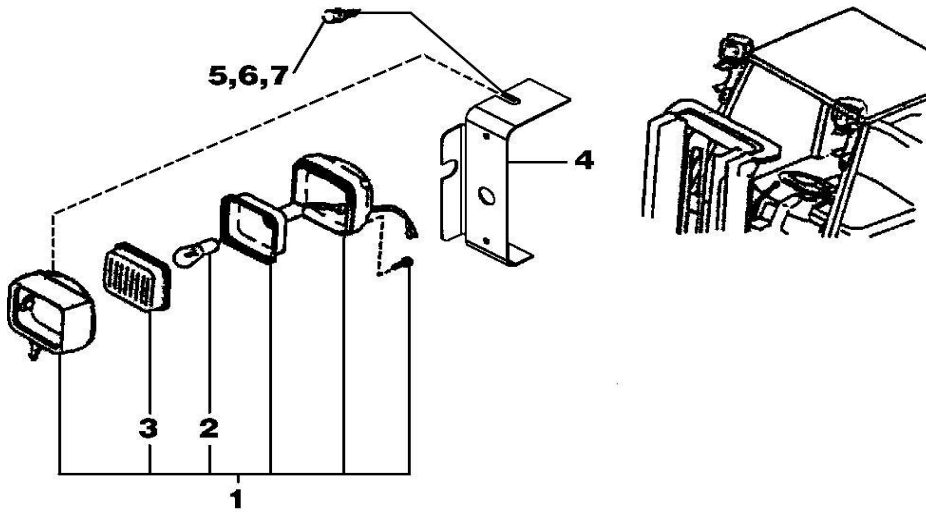




01-17-08 开关及组合仪表  
SWITCH&COMBINED METER

序号 NO.	零件图号 Part NO.	零件名称 Description	数量 Q'ty
1	JK815	转向灯开关 SWITCH-COMPL-TURN SIGNAL	1
2	JK107	车灯开关 SWITCH ASSY-LIGHTING	1
3	Z15G1318	油泵开关 PUMP-SWITCH	2
4		起动开关 SWITCH ASSY-IGNTTION	1
5	ZD200×8	扎带 CLIP	1
6	JK205A	制动灯开关 SWITCH- BRAKE SIGNAL	1
7	30XFA80A00003	胶垫 MATTRESS	4
8	30XFA80A00002	胶垫 MATTRESS	1
9	30XFA80A00001	仪表安装支架 METER SHELF	1
10	JC-3	方向开关 SWITCH ASSY-FORWARD	1
11	KW7-2	手制动开关 HAND-BRACK SWITCH	1
12	DC2004-80V	组合仪表 COMBINED METER	1

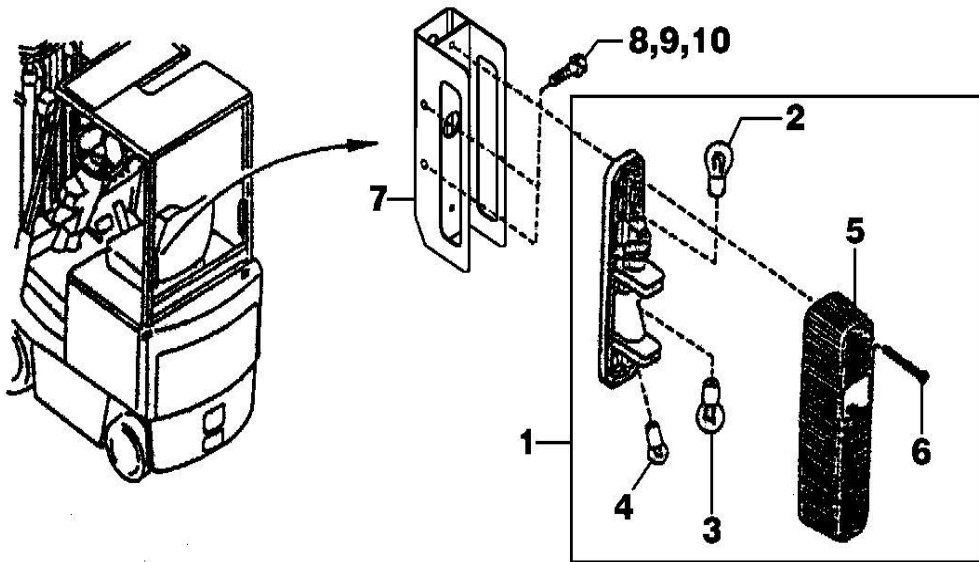
01-17-09 前灯及前信号灯  
HEAD LAMP & FRONT COMBINATION LAMP



01-17-09 前灯及前信号灯  
HEAD LAMP& FRONT COMBINATION LAMP

序号 NO.	零件图号 Part NO.	零件名称 Description	数量 Q'ty
1	WD100×90/24V	前大灯 LAMP ASSY-HEAD	2
2		灯泡 BULB	2
3		透镜 LENS	2
4		前灯支架 BRACKET-HEAD LAMP	2
5	GB5781	螺栓 M8×16 BOLT M8×16	6
6	GB93	垫圈 8 WASHER SPRING 8	6
7	GB97.1	垫圈 8 WASHER 8	6
8	QXD160×48/24V	前组合灯 FRONT COMBINATION LAMP	2
9		灯泡 BULB	2
10		透镜 LENS	2

01-17-10 后组合灯  
REAR COMBINATION LAMP

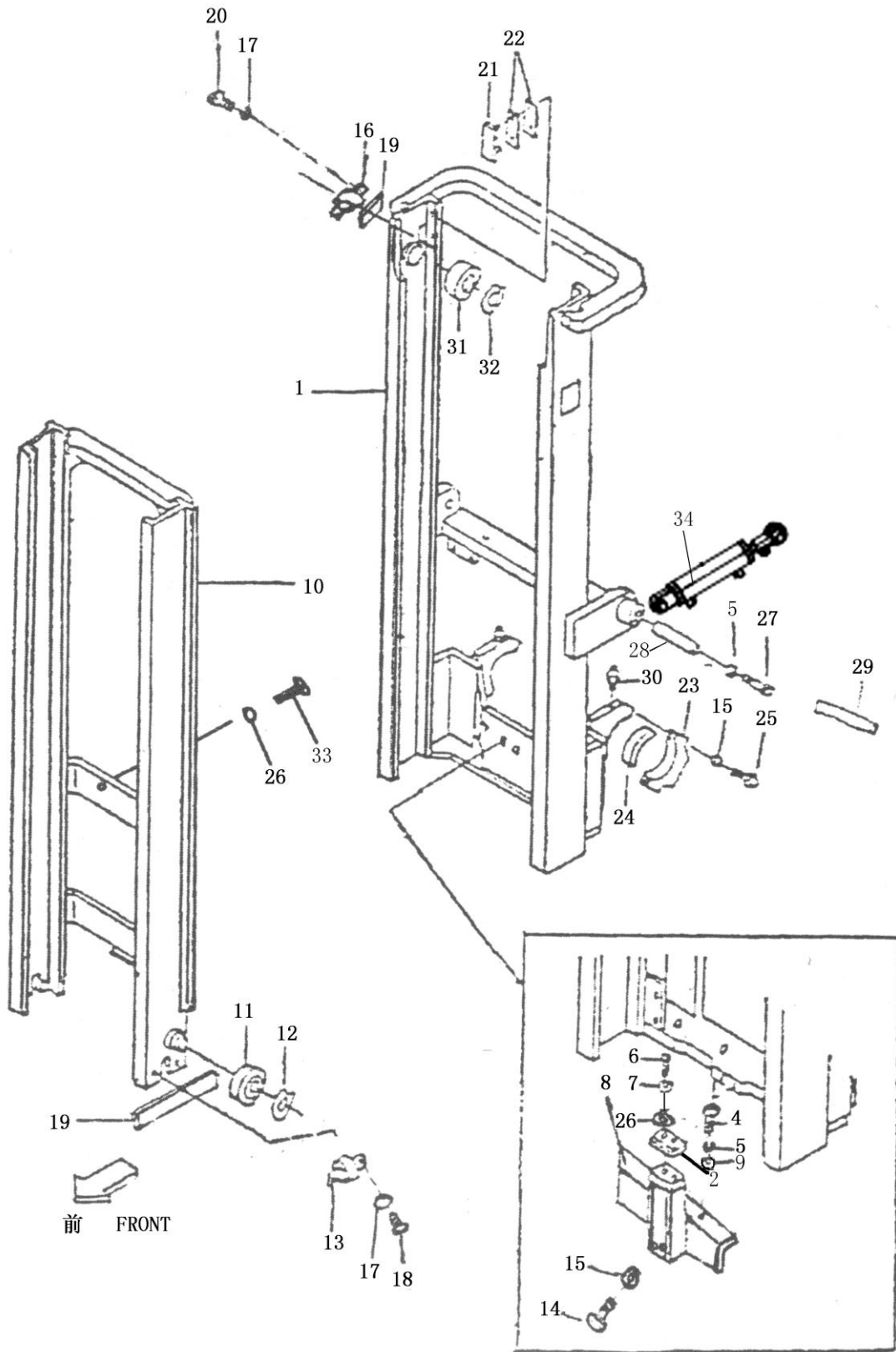


01-17-10 后组合灯  
REAR COMBINATION LAMP

序号 NO.	零件图号 Part NO.	零件名称 Description	数量 Q'ty
1	SHD220×55/24V	后组合灯 LAMP ASSY-REAR COMBINATION	2
2		灯泡 BULB	2
3		灯泡 BULB	2
4		灯泡 BULB	2
5		透镜 LENS	2
6		螺栓 SCREW	4
7	15RCA8060000	后右灯架总成 PROTECTOR-REAR COMBINATION LAMP RH	1
	15RCA8050000	后左灯架总成 PROTECTOR-REAR COMBINATION LAMP LH	1
8	GB5781	螺栓 M8×16 BOLT M8×16	4
9	GB93	垫圈 8 WASHER SPRING 8	4
10	GB97.1	垫圈 8 WASHER 8	4

## 02 门架部分

02-01-01 工作装置 (一)  
LOADING SYSTEM (ONE)

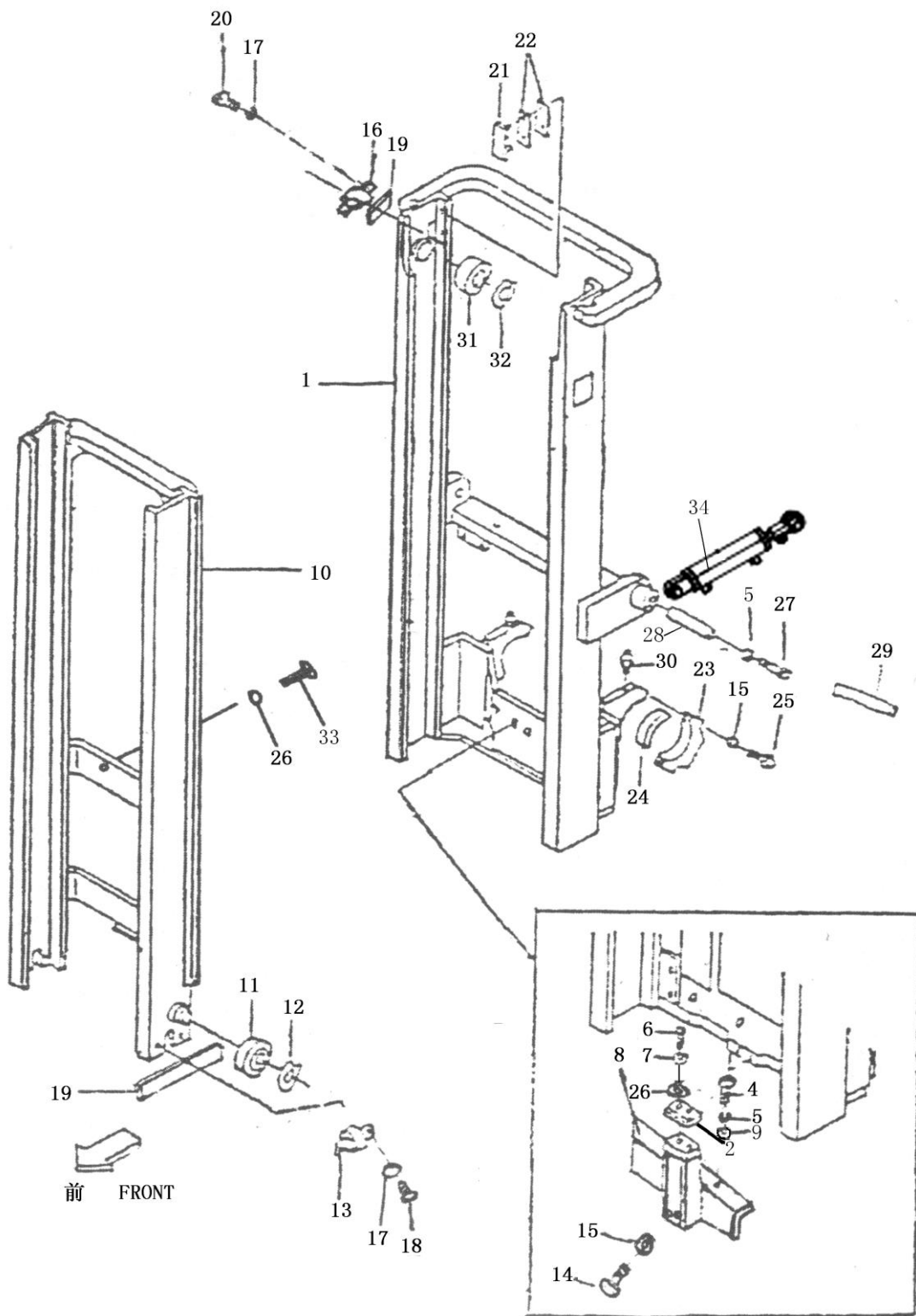


02-01-01 工作装置（一）  
LOADING SYSTEM（ONE）

序号 NO.	零件图号 Part NO.	零件名称 Description	数量 Q'ty
1	30RC1FA100000	外门架 MAST OUTER	1
2	30X1000008	限位块 PLATE POSITION	1
4	GB5786	螺栓 M10×1.25×20 BOLT M10×1.25×20	4
5	GB93	垫圈 10 WASHER 10	8
6	GB65	螺钉 M6×12 SCREW M6×12	2
7	GB93	垫圈 6 WASHER 6	2
8	30X1600000	护板 PLATE GUARD	1
9	GB97.1	垫圈 10 WASHER 10	4
10	30XDB1FA200000	内门架 MAST INNER	1
11	980811M-00 30XDB1FA200002	滚轮 ROLLER 滚轮轴 STALK	2 2
12	GB894.1	挡圈 55 RING SNAP 55	2
13	L4903	侧滚轮 ROLLER	2
14	GB5786	螺栓 M16×1.5×50 BOLT M16×1.5×50	2
15	GB93	垫圈 16 WASHER 16	6
16	30X1400000	侧滚轮组 I ROLLER I	2
17	GB93	垫圈 12 WASHER 12	8
18	GB5786	螺栓 M12×1.25×45 BOLT M12×1.25×45	4
19	30X1000013	垫圈 SHIM	4 组
20	GB5786	螺栓 M12×1.25×35 BOLT M12×1.25×35	4
21	30X1010000	限位滑块 SLIPPER	各 2



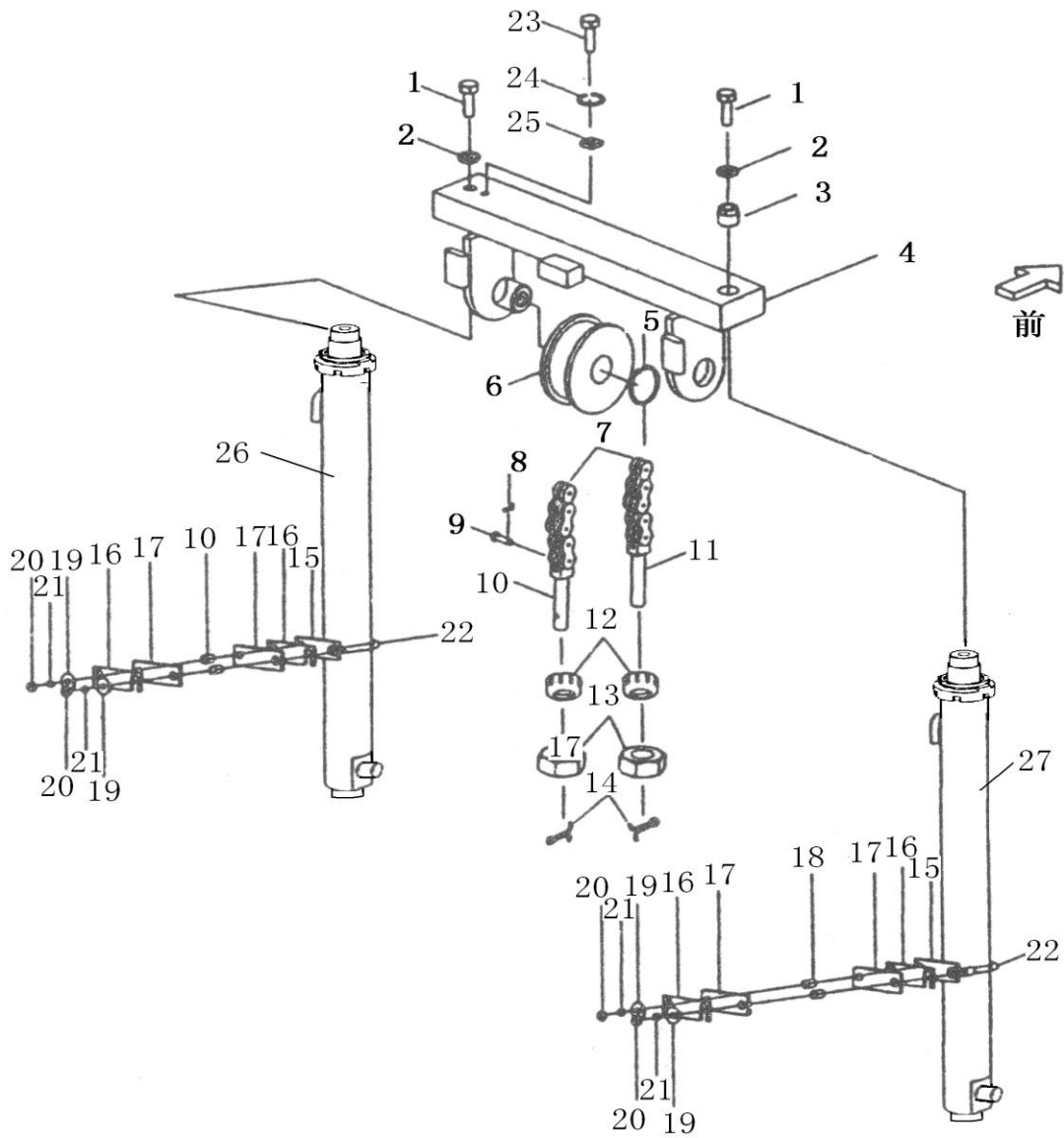
02-01-01 工作装置 (一)  
LOADING SYSTEM (ONE)



02-01-01 工作装置（一）  
LOADING SYSTEM（ONE）

序号 NO.	零件图号 Part NO.	零件名称 Description	数量 Q'ty
22	30X1000006	垫片 SHIM	4
23	30RC1FA000001	支座盖 CAP MAST SUPPORT	2
24	15RA1000015	轴衬 BUSHING	2
25	GB5785	螺栓 M16×1.5×65 BOLT M16×1.5×65	4
26	GB97.1	垫圈 6 WASHER 6	3
27	GB5786	螺栓 M10×1.25×25 BOLT M10×1.25×25	4
28	30RC1FA600000	倾斜油缸销轴总成 PIN	2
29	25RA1600000	倾斜油缸销轴总成 PIN	2
30	JB/T7940.1	油杯 M10×1 OIL CUP M10×1	4
31	80708K	轴承 BEARING	2
32	GB894.1	挡圈 40 RING SNAP 40	4
33	GB5781	螺栓 M6×25 BOLT M6×25	1
34	CQG70/32.119-00/ZY	倾斜油缸（左右） Tilt cylinder	2

02-01-02 工作装置 (二)  
LOADING SYSTEM (TWO)

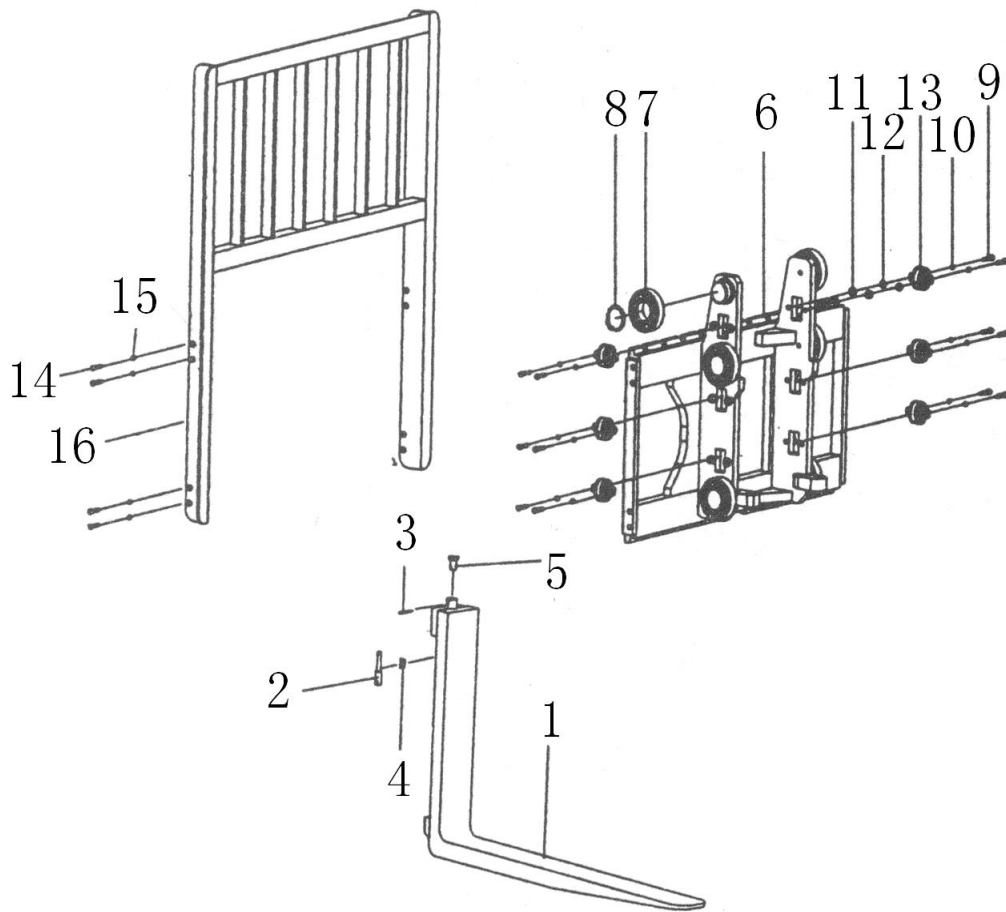


序号 NO.	零件图号 Part NO.	零件名称 Description	数量 Q'ty
1	GB5786	螺栓 M16×1.5×50 BOLT M16×1.5×50	2
2	GB93	垫圈 16 WASHER 16	2
3	30X1000002	螺塞 PLUG, SCREW	1
4	30X1C1500000	活动梁 HEAD, PISTON	1
5	GB894.1	挡圈 40 RING, SNAP 40	2

02-01-02 工作装置（二）  
LOADING SYSTEM（TWO）

序号 NO.	零件图号 Part NO.	零件名称 Description	数量 Q'ty
6	780708K	链轮 CHAIN WHEEL	2
7	GB/T6074	链条 LH1623 (99×25.4) CHAIN LH1623 (99×25.4)	2
8	GB91	销 3.2×20 PIN 3.2×20	4
9	30X1900002	销轴 PIN	4
10	30X1900001	链条接头 PIN, CHAIN ANCHOR	2
11	25X1900003	链条接头 PIN, CHAIN ANCHOR	2
12	GB6171	螺母 M18×1.5 NUT M18×1.5	6
13	30X1900004	球形螺母 BALL-NUT	4
14	GB91	销 3.2×40 PIN 3.2×40	4
15	30X1000010	油缸支撑块 SUPPORT, CYLINDER	2
16	30XDB1FA000001	垫片 SHIM	4
17	30XDB1FA000002	垫块 SPACER	4
18	30XDB1FA000004	限位钢管 STEEL TUBE	4
19	GB97.1	垫圈 10 WASHER 10	4
20	GB6170	螺母 M10 NUT M10	4
21	GB93	垫圈 10 WASHER 10	4
22	30XDB1FA000003	U型螺栓 U-BOLT	2
23	GB5786	螺栓 M12×1.25×20 BOLT M12×1.25×20	1
24	GB93	垫圈 12 WASHER 12	1
25	30X1000012	卡板 PLATE, KEY	1
26	3.0TCMS-3000-00/ Y	右起升油缸 Lift cylinder R.H	1
27	3.0TCMS-3000-00/ Z	左起升油缸 Lift cylinder L.H	1

02-01-03 工作装置 (三)  
LOADING SYSTEM (THREE)



02-01-03 工作装置（三）  
LOADING SYSTEM（THREE）

序号 NO.	零件图号 Part NO.	零件名称 Description	数量 Q'ty
1	30X17C10000	货叉 FORK	2
2	30X1700002	定位销 STOPPER	2
3	GB119.2	销 B4×55 PIN B4×55	2
4	30X1700003	弹簧 SPRING	2
5	30X1700001	把手 HANDLE	2
6	30XDB1FA310000	货叉架体 FORK BRACKET	1
7	980811M-00	滚轮 ROLLER	6
8	GB894.1	挡圈 55 RING SNAP 55	6
9	GB5786	螺栓 M12×1.5×45 BOLT M12×1.5×45	12
10	GB93	垫圈 12 WASHER 12	12
11	30XDB1FA300001	垫块 SPACER	12
12	30X1000013	垫圈 WASHER	12 组
13	L4903	侧滚轮 ROLLER	6
14	GB5786	螺栓 M14×1.5×25 BOLT M14×1.5×25	8
15	GB93	垫圈 14 WASHER 14	8
16	30X1800000	挡货架 BACKREST	1

## 02-01-04 工作装置（四） LOADING SYSTEM （FOUR）

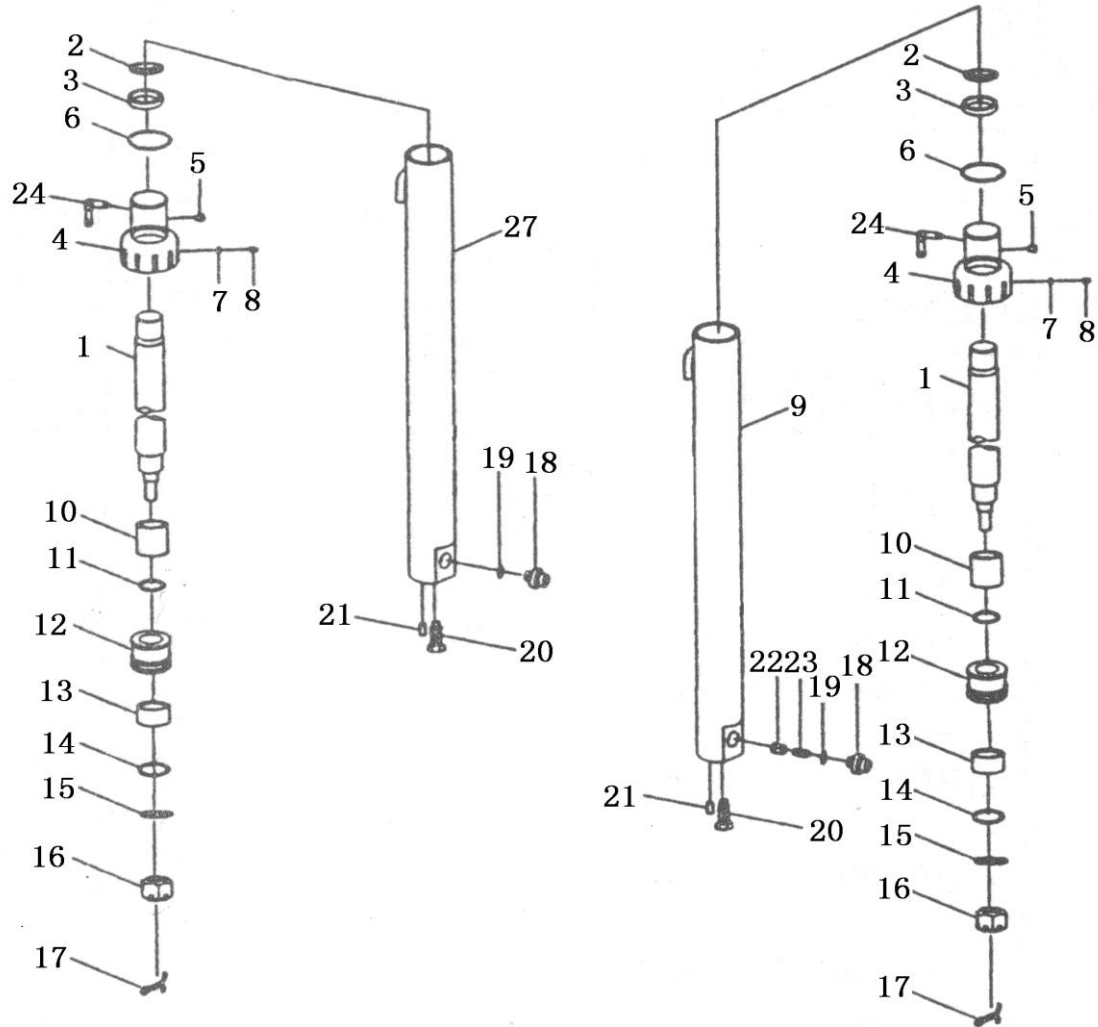
### 油缸

整机可装配的举升和倾斜油缸各有两种：一种为陕西燎原液压件厂生产；一种为晋江池店叉车配件厂生产。您在查阅这部分的零件目录时，请先确认您的叉车上安装的是哪一种油缸。有“燎原液压”字样标签的为陕西燎原液压件厂的油缸。有“晋江机械有限公司”字样标签的为晋江池店叉车配件厂的油缸。对应的举升和倾斜油缸零件目录各分两部分，请注意确认。为保证准确请您在选择备件时一定要提供整机出厂编号。由此造成的不便请您见谅！

### CYLINDER

In this chapter, you can see two kinds of lift or tilt cylinder and the Parts Manual of SHANXI LIAOYUAN HYDRAULIC PRESSURE CO., LTD. Another Manual of JINJIANG CHIDIAN FORKLIFT-FITTINGS FACTORY . You need to know the type of the cylinder on your forklift truck, before reading this chapter. If there is a label marks the letters “燎原液压” on the cylinder body ,it is made of SHANXI LIAOYUAN HYDRAULIC PRESSURE CO., LTD. So you can read the part 2. And if there is a label marks the letters “晋江机械有限公司” on the cylinder body, it is made of JINJIANG CHIDIAN FORKLIFT-FITTINGS FACTORY. So you can read the part 1. To avoid mistake, when ordering parts, give the DALIAN forklift trucks dealer or distributor the serial number of the forklift truck .Beg your pardon for the discomfort with it !

02-01-04 工作装置（四）  
LOADING SYSTEM（FOUR）  
燎原起升油缸  
LIFT CYLINDER OF LIAOYUAN



序号 NO.	零件图号 Part NO.	零件名称 Description	数量 Q'ty
1	3.0DCS-S-01	活塞杆 ROD, PISTON	2
2	FD2633A0	DKI 型防尘圈 DUST PROOF WASHER	2
3	FU0567K0	ISI 型密封圈 RING	2
4	3.0DCS-S-02	缸盖 CAP, CYLINDER	2
5	Q/11A.J08.7	堵塞 PLUG	2
6	GB3452.1	O 型圈 35506300.5171 O RING 35506300.5171	2



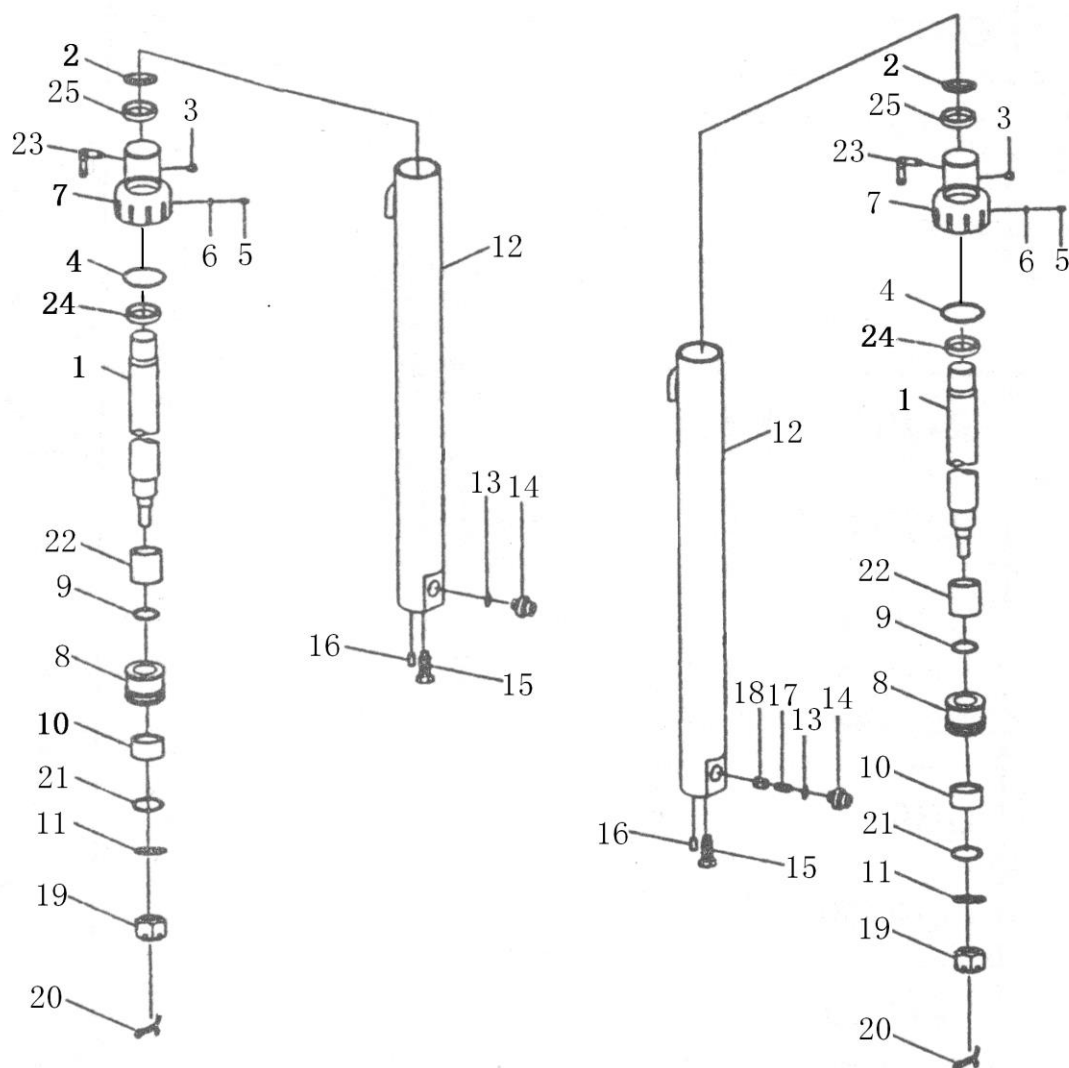
02-01-04 工作装置（四）  
LOADING SYSTEM（FOUR）

燎原起升油缸

LIFT CYLINDER OF LIAOYUAN

序号 NO.	零件图号 Part NO.	零件名称 Description	数量 Q'ty
7	Q/11AJ08.7	垫子 SHIM	4
8	GB80	螺钉 M6×8 BOLT M6×8	4
9	3.0DCS-S-10/Y	右缸体 CLYINDER R.H	1
10	3.0DCS-S-03	限位套 SLEEVE	2
11	GB3452.1	O 型圈 35502500.5171 O RING 35502500.5171	2
12	56Q/11AJ08.8	活塞 PISTON	2
13	56Q/11AJ08.9	支承圈 BUSHING	2
14	Q/11AJ08.10	保护圈 RING,SNAP	2
15	FU2114L0	OSI 型密封圈 RING	2
16	GB9459	螺母 M18×1.5 NUT M18×1.5	2
17	GB91	开口销 4×50 PIN 4×50	2
18	Q/11AJ08.14-90	管嘴 FITTING	2
19	16A4-175-17×2.5	O 型圈 O RING	2
20	35Q/11AJ08.15	螺钉 SCREW	2
21	Q/11AJ08.16	销子 PIN	2
22	1.8Q/11AJ08.13	滑阀 SLIDING SLEEVE	1
23	Q/11AJ08.12-90	弹簧 SPRING	1
24	Q/11AJ08.5-90	管嘴 VITTA JPINT	2
25	16A4-236-12	堵帽 PLUG 未示出	2
26	Q/11AJO3067	堵帽 M22×1.5 PLUG M22×1.5 未示出	2
27	3.0DCS-S-10/Z	左缸体 CYLINDER L.H	1

02-01-04 工作装置（四）  
 LOADING SYSTEM（FOUR）  
 晋江起升油缸  
 LIFT CYLINDER OF JINJIANG

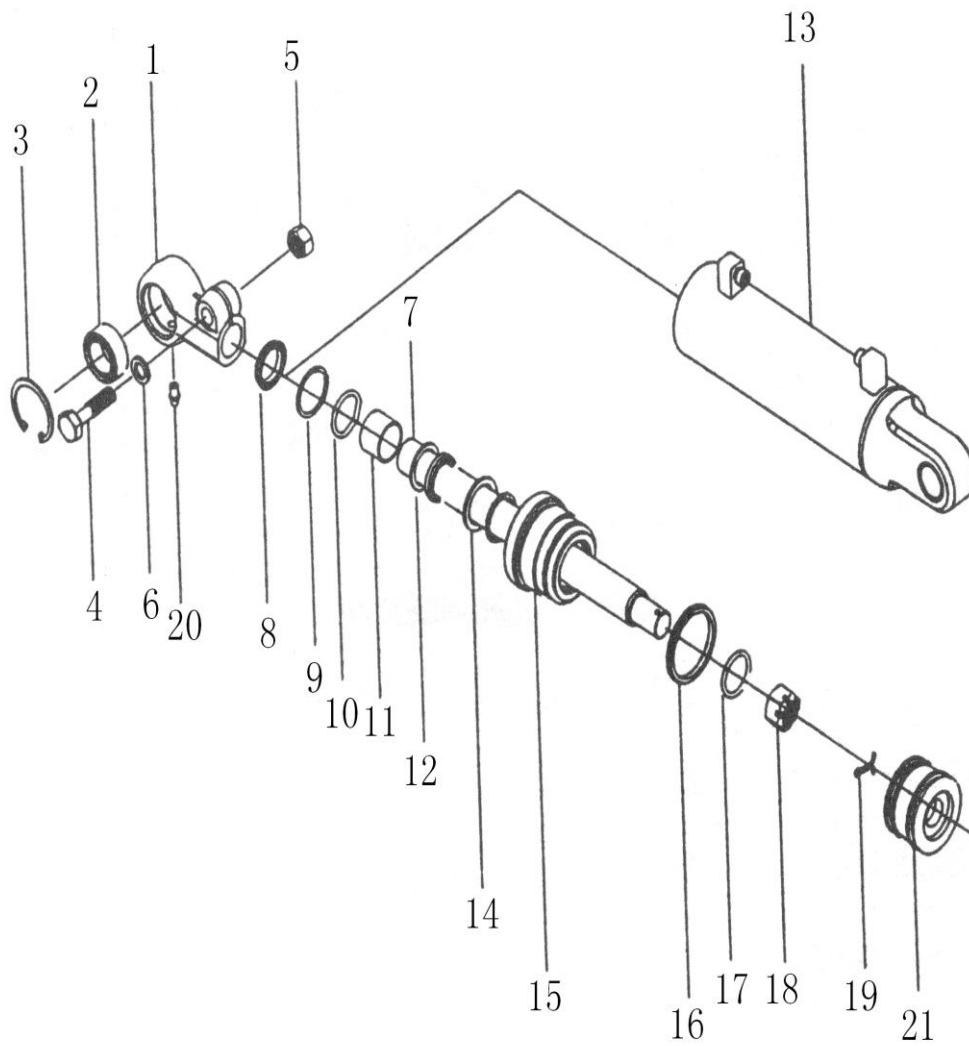


序号 NO.	零件图号 Part NO.	零件名称 Description	数量 Q'ty
1	3.0TCMS-3000-01/ZY	活塞杆 ROD, PISTON	2
2	DKB45	铁壳防尘圈 DKB45×57×7 DUST PROOFWASHER DKB45×57×7	2
3	3.0TCMS-3000-02/ZY	堵塞 PLUG	2
4	GB1235-76	O型圈 68×3.1 O RING 68×3.1	2
5	GB73-85	螺钉 M6×8 SCREW M6×8	2

02-01-04 工作装置（四）  
LOADING SYSTEM（FOUR）  
晋江起升油缸  
LIFT CYLINDER OF JINJIANG

序号 NO.	零件图号 Part NO.	零件名称 Description	数量 Q'ty
6	3.0TCMS-3000-03/ZY	垫子 SHIM	2
7	3.0TCMS-3000-04/ZY	缸盖 CAP, CYLINDER	2
8	3.0TCMS-3000-05/ZY	活塞 PISTON	2
9	GB1235-76	O 型圈 30×3.1 O RING 30×3.1	2
10		支承环 56×52×48-26/16 BUSHING56×52×48-26/16	2
11	OSI	活塞上密封件 D56×45×7 RING D56×45×7	2
12	3.0TCMS-3000-06/ZY	油缸体 CYLINDER	2
13	GB1235-76	O 型圈 22×2.4 O RING 22×2.4	2
14	3.0TCMS-3000-07/ZY	直接管接头 FITTING	2
15	3.0TCMS-3000-08/ZY	螺栓 M12×1.25 BOLT M12×1.25	2
16	GB119-86	圆柱销 A10×30 PIN A10×30	2
17	3.0TCMS-3000-09/ZY	弹簧 SPRING	1
18	3.0TCMS-3000-10/ZY	滑阀 SLIDING SLEEVE	1
19	3.0TCMS-3000-11/ZY	螺母 M20×1.5 NUT M20×1.5	2
20	GB91	开口销 4×50 PIN 4×50	2
21		挡圈 56×45×2 RING SNAP 56×45×2	2
22	3.0TCMS-3000-12/ZY	限位套 SLEEVE	2
23	3.0TCMS-3000-13/ZY	管咀 R1/4" VITTA JOINT R1/4"	2
24	SF-1	钢背轴承 45×50×25 BEARING 45×50×25	2
25	OSI	轴用 Y 型圈 45×55×6 RING 45×55×6	2

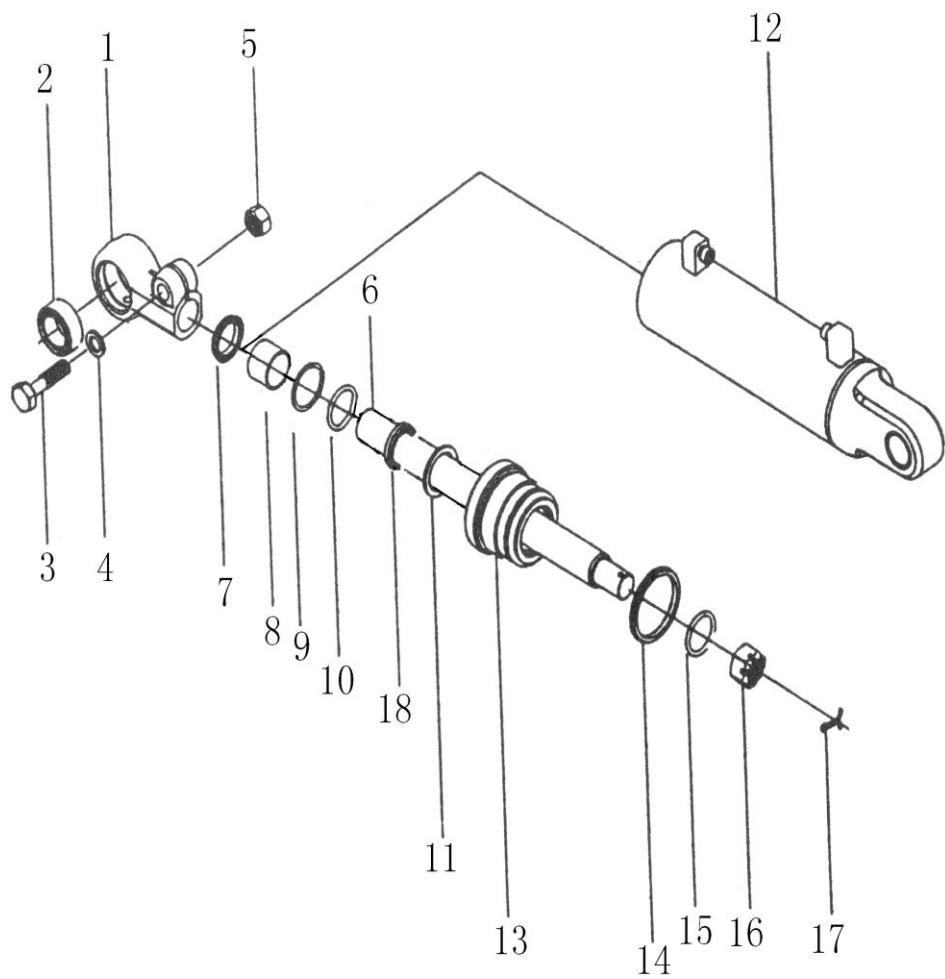
02-01-04 工作装置（四）  
LOADING SYSTEM（FOUR）  
燎原倾斜油缸  
TILT CYLINDER OF LIAOYUAN



02-01-04 工作装置（四）  
LOADING SYSTEM（FOUR）  
燎原倾斜油缸  
TILT CYLINDER OF LIAOYUAN

序号 NO.	零件图号 Part NO.	零件名称 Description	数量 Q'ty
1	DQG70/32.78-01	杆头 POLE TOP	2
2	GB9163	关节轴承 GE30ES BUSHING GE30ES	2
3	GB893.1	孔用弹簧垫圈 47 RING 47	4
4	GB5782	螺栓 M14×50 BOLT M14×50	2
5	GB6170	螺母 M14 NUT M14	2
6	GB93	垫片 14 WASHER 14	2
7	DQG70/32.119-02	活塞杆 PISTON GROUP	2
8	FQ0568C1	LBI 防尘圈 SEAL DUST	2
9	GB3452.1	O 型圈 26503250-J1 O RING 26503250-J1	4
10	FU2055S0	USI 密封圈 RING	2
11	DQG70/32.78-03	导向套 GUIDE-SLEEVE	2
12	GB3452.1	O 型圈 35506300-J1 O RING 35506300-J1	2
13	DQG70/32.119-10 ZY	缸体 CYLINDER	2
14	DQG70/32.119-04	限位套 BUSHING	2
15	DQG70/32.78-05	活塞 OIL PLUG	2
16	DQG70/32.78-06	支撑圈 O-RING	2
17	FU0846L0	OSI 密封圈 RING	4
18	GB9459	螺母 M24×2 NUT M24×2	2
19	GB91	开口销 5×50 PIN 5×50	2
20	JB/T7940.1	油杯 M10×1 OIL CUP M10×1	2
21	1.5DKMS-S-14/Z/2	堵帽 PLUG	4

02-01-04 工作装置（四）  
LOADING SYSTEM（FOUR）  
晋江倾斜油缸  
TILT CYLINDER OF JINJIANG



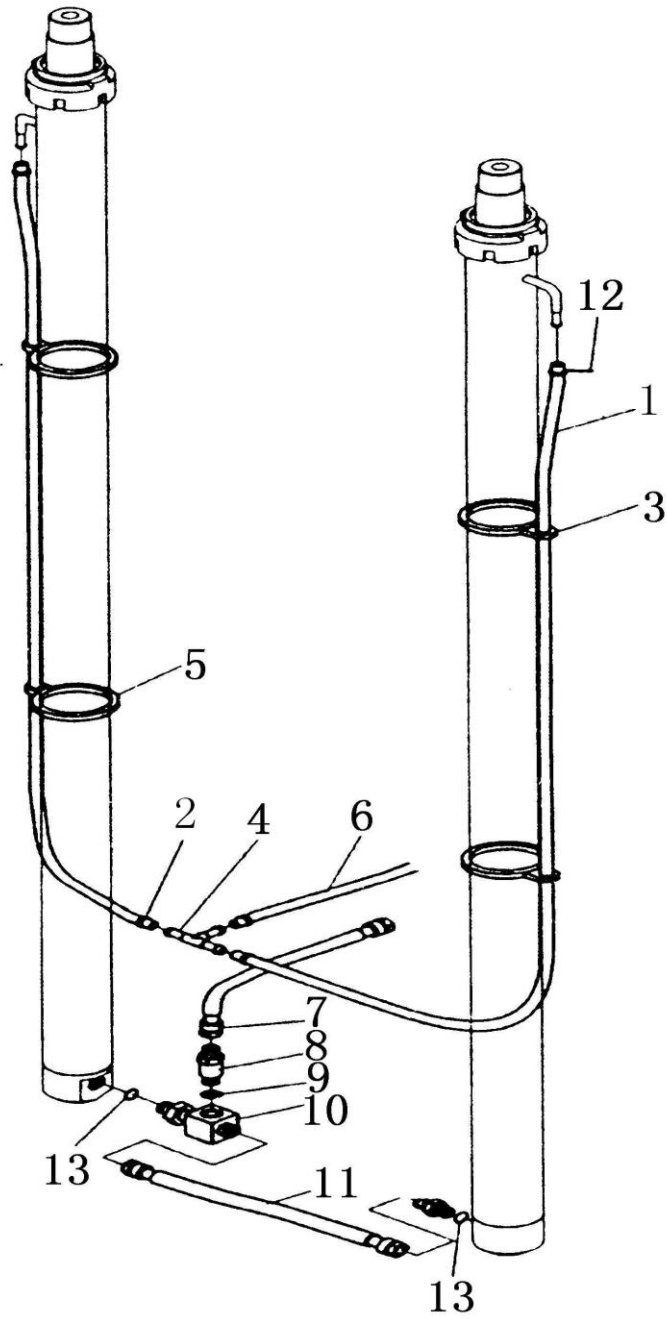
02-01-04 工作装置（四）  
LOADING SYSTEM（FOUR）

晋江倾斜油缸

TILT CYLINDER OF JINJIANG

序号 NO.	零件图号 Part NO.	零件名称 Description	数量 Q'ty
1	CQD70/32×119-01	接杆头 POLE TOP	2
2	GB9163	关节轴承 GB30ES BUSHING GB30ES	2
3	GB5781	螺栓 M14×50 BOLT M14×50	2
4	GB93	垫圈 14 WASHER SPRING 14	2
5	GB41	螺母 M14 NUT M14	2
6	CQG70/32×119-02	活塞杆 PISTON GROUP	2
7	CY129	防尘圈 d32 SEAL DUST d32	2
8	CQG70/32×119-03	导向套 GUIDE-SLEEVE	2
9	D232	轴用 Y 型密封圈 32×42×6 RING 32×42×6	2
10	CKS0320	轴用组合圈 RING	2
11	GB1235	O 型密封圈 70×3.1 O RING 70×3.1	2
12	CQG70/32×119-04	油缸体（左右） CYLINDER	2
13	CQG70/32×119-05	活塞体 OIL PLUG	2
14	DAS70	孔用组合圈 DAS70 RING DAS70	2
15	GB1235	O 型密封圈 37×3.1 O RING 37×3.1	2
16	GB9457	开槽螺母 M24×1.5 NUT M24×1.5	2
17	GB91	开口销 4×36 PIN 4×36	2
18	SF-1	钢背轴承 32×36×25 BUSHING 32×36×25	2

02-02 门架管路系统  
HYDRAULIC SYSTEM MAST

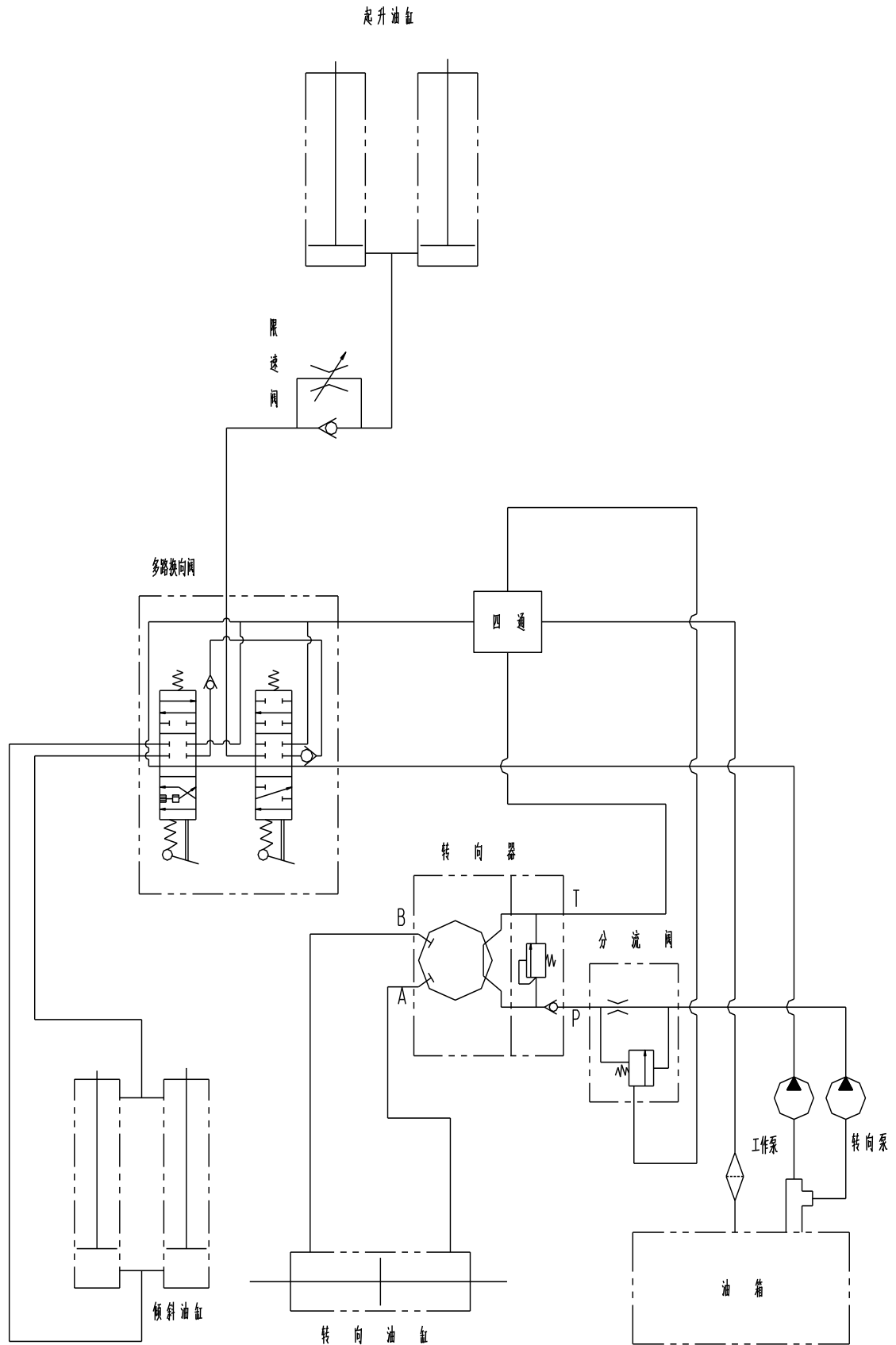




02 门架管路系统  
HYDRAULIC SYSTEM MAST

序号 NO.	零件图号 Part NO.	零件名称 Description	数量 Q'ty
1	GB/T13527.1	软聚氯乙烯管 LS-12×1.5×1120 HOSE-RUBBER LOW PRESSURE LS-12×1.5×1120	1
2	GB/T13527.1	软聚氯乙烯管 LS-12×1.5×1620 HOSE-RUBBER LOW PRESSURE LS-12×1.5×1620	1
3	30V7000001	软带 CINCTURE	6
4	15RA7040000	三通接头 CONNECTOR	1
5	ZD300×8	紧固带 CLAMP-BAND	6
6	GB/T13527.1	软聚氯乙烯管 LS-12×1.5×1050 HOSE-RUBBER LOW PRESSURE LS-12×1.5×1050	1
7	30RC7040000	起升胶管 13 II HOSE ASSY-LIFT 13 II	1
8	XSF-F16L-3T-G	限速阀 FLOW REGULATOR	1
9	GB3452.1	O 形圈 18×2.65 O RING 18×2.65	1
10	30X7080000	三通接头 CONNECTOR	1
11	JB1885	高压胶管 13 II - 315 HOSE ASSY-LIFT 13 II - 315	1
12	JB/ZQ3777	喉箍 13-20 CLAMP-HOSE 13-20	6
13	GB3452.1	O 形圈 11.2×2.65 O RING 11.2×2.65	4

# 液压系统原理图 HYDRAULIC SYSTEM PRINCIPLE FIG



电气系统原理图  
ELECTRIC SYSTEM PRINCIPLE FIG

