

## 说明

感谢您使用我公司生产的产品。

本零件图册汇集了2-3.8t第5代内燃叉车系列各种零部件，以使用户在修理更换叉车零部件时，从中查找出所需的零件名称、结构及安装位置，并作为订货参考。

订购零件时，必须说明原叉车的型号、出厂编号，并根据本图册，说明零件的详细名称、标号、数量及完整的代号。

为提高质量，我公司叉车根据用户和生产发展，将不断地进行改进，对改进部分在目录中不能同时一一修改，请用户谅解，零件的详细情况可联系本公司的销售公司及配件部门。

本图册不可避免的存在缺点，我们热诚欢迎用户提出宝贵意见。

2023年12月

Thank you for selecting our products.

This parts book collects all of the parts (components) of 5th generation series 2-3.8 tonnage forklift trucks. It is convenient for users to identify the description, the structure and the assembling location of the parts replaced or repaired, and to put order on them.

When ordering parts, it is necessary to state the model of the forklift, and the date of manufacture, and the description, specification, quantity and code based on this parts book.

According to users and the development of product, the forklift of our company is improved continuously, therefore the information contained in this book may be updated without notice, users should pay attention to that.

For improving our work, customers are sincerely requested to give us comments and suggestions.

### 机型含义/Model configuration:

型号/Model	发动机/Engine	变速箱/Transmission	额定起重量 (t) / 载荷中心距 (mm)
D20-3X5	云内YN27NAG4 (国IV/Domestic IV)	JDS30II S3-1(机械/Mechanical) YQX30A(液力/Hydraulic)	2/500
D25-3X5	新柴4D29V41-009 (国IV/Domestic IV)		2.5/500
D30-3X5	全柴V29-50V42 (国IV/Domestic IV)		3/500
D35-3X5	全柴V32-50V42 (国IV/Domestic IV)		3.5/500
D38-3X5	全柴V31-50V42 (国IV/Domestic IV) 新柴C490BPG-225A (国II/Domestic II)		3.8/500

查询方法:

1. 在目录中找到相应的系统或总成;
2. 翻至所标页数, 找到该图;
3. 在其图中找出所需零部件, 以及它所标注的序号。用户可根据目录中各系统图查找所需的零部件的序号, 根据序号可查得相应的图号或者标准号。

本图册中凡各种叉车通用的零件在目录中不加说明, 不通用件除了在目录的左上角表示此系统所适用的车型代号和车型外, 还在相应的备注中标注车型代号的差别, 如第2页, 图2, 目录左上角A-J为车型代号, 表示该图零件用于CPC(D)20/25/30/35/38-5叉车。

4. 根据这个序号, 在其后附表中可以查到系统或零件的详细信息。

订购零部件时, 务请写清叉车的型号, 出厂编号, 所需零部件的图号及订购数量。维修时, 请使用原厂家提供的零部件, 以确保叉车质量。

Indexing Way:

1. Find out the corresponding system or assembly in the content.
2. Turn to the marked page, find out the detail drawing No. noted are all of the same parts and the components otherwise they should be noted in case of difference.

for example, in figure 2, the top left corner in page 2, A-J means the type of the truck, means this part is only applied to type of CPC(D)20/25/30/35/38-5 forklift truck.

3. From the detail drawing, find out the parts and their item numbers.
4. According to the item number, find out detailed information of these parts of the system or assembly from attached table.

When ordering parts or components, please indicate the model, serial number and the ordering quantity of parts or components which you require .

When you replace parts or components, please adopt the ones from original factory to ensure the quality of forklift.

配置号列表/Configuration NO. list

A	D20M-3X5	I	D38M-3X5		
B	D20-3X5	J	D38-3X5		
C	D25M-3X5				
D	D25-3X5				
E	D30M-3X5				
F	D30-3X5				
G	D35M-3X5				
H	D35-3X5				

## 目录/Contents

系统编号 Item	插图序号 Code	名称 Name	适合机型 Models	页 码 page
01	图1 Fig.1	发动机总成 Engine assy.	ABCDEFGHIJ	1
	图2 Fig.2	空滤器总成 Air filter assy.	ABCDEFGHIJ	2
	图3 Fig.3	冷却系统 Cooling system	ABCD	3
	图4 Fig.4	冷却系统 Cooling system	EFGHIJ	4
	图5 Fig.5	燃油装置总成 Fuel device assy.	ABCDEFGHIJ	5
	图6 Fig.6	排气系统(中排) Exhaust system(medium displacement)	ABCDEFGHIJ	6
02	图7 Fig.7	驱动桥总成(单排) Drive axle assy.(single tire)	ABCD	7
	图8 Fig.8	驱动桥总成(单排) Drive axle assy.(single tire)	EFGHIJ	8
	图9 Fig.9	驱动桥总成(双排) Drive axle assy.(double tire)	ABCD	9
	图10 Fig.10	驱动桥总成(双排) Drive axle assy.(double tire)	EFGHIJ	10
	图11 Fig.11	驱动桥 Drive system	ABCD	11
	图12 Fig.12	驱动桥 Drive system	EFGHIJ	13
	图13 Fig.13	变速箱总成 Transmission	ACEGI	15
	图14 Fig.14	换档变速部分1 Shifting& speed part 1	ACEGI	16
	图15 Fig.15	换档变速部分2 Shifting& speed part 2	ACEGI	19
	图16 Fig.16	主轴部分 Main shaft part	ACEGI	22
	图17 Fig.17	差速器部分 Differential part	ACEGI	24
	图18 Fig.18	离合器部分 Clutch part	ACEGI	25
	图19 Fig.19	变速箱总成 Transmission assy.	ACEGI	27
	图20 Fig.20	变速箱总成 Transmission assy.	ACEGI	28
	图21 Fig.21	离合器总成 Clutch assy.	ACEGI	32

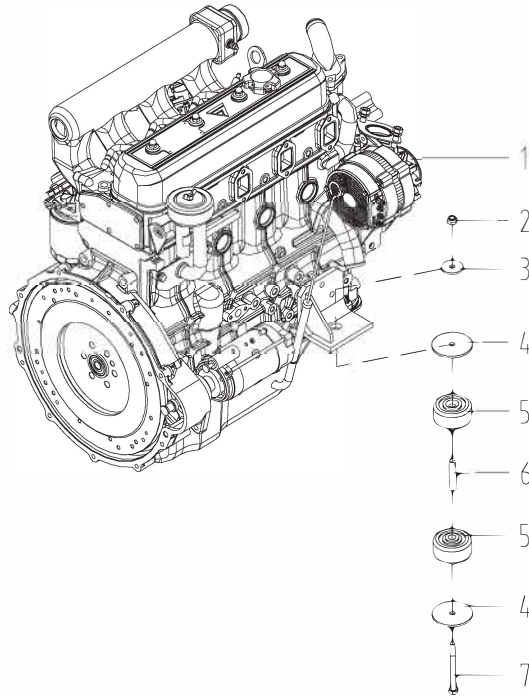
系统编号 Item	插图序号 Code	名称 Name	适合机型 Models	页 码 page
02	图22 Fig.22	差速器组件 Diff. element	ACEGI	34
	图23 Fig.23	输出轴组件 Output shaft element	ACEGI	36
	图24 Fig.24	过滤器组件 Filter element	ACEGI	37
	图25 Fig.25	变速箱 1 Transmission 1	BDFHJ	40
	图26 Fig.26	变速箱 2 Transmission 2	BDFHJ	42
	图27 Fig.27	离合器总成 Clutch assy.	BDFHJ	44
	图28 Fig.28	控制阀总成 Control valve assy.	BDFHJ	45
	图29 Fig.29	微动阀 Inching valve	BDFHJ	46
	图30 Fig.30	供油泵 Oil pump	BDFHJ	47
	图31 Fig.31	减速传动和差速器部分 Reduction gear & Diff. part	BDFHJ	48
	图32 Fig.32	变速操纵总成 Speed control assembly	BDFHJ	51
03	图33 Fig.33	转向操纵总成 Steering control assembly	BDFHJ	52
	图34 Fig.34	转向桥总成 Steering axle assy.	ABCDEFGHIJ	54
	图35 Fig.35	转向桥 Steering axle	ABCDEFGHIJ	55
04	图36 Fig.36	油门操纵总成 Throttle control assy.	ABCDEFGHIJ	57
	图37 Fig.37	行车制动与离合操纵 Brake & clutch control	ABCDEFGHIJ	58
06	图38 Fig.38	行车制动与微动操纵 Brake & ingching control	ACEGI	60
07	图39 Fig.39	停车制动操纵 Parking brake control	BDFHJ	63
08	图40 Fig.40	车架 Chassis	ABCDEFGHIJ	64
09	图41 Fig.41	覆盖件系统 Outer panel system	ABCDEFGHIJ	65
	图42 Fig.42	覆盖件系统 Outer panel system	ABCDEFGHIJ	68
10	图43 Fig.43	门架(基本型) Mast (normal mast)	ABCDEFGHIJ	71

系统编号 Item	插图序号 Code	名称 Name	适合机型 Models	页 码 page
10	图44 Fig.44	货叉及货叉架(基本型) Fork & Fork carrier(normal mast)	ABCDEFGHJIJ	74
	图45 Fig.45	起升油缸(基本型) Lift cylinder (normal mast)	ABCD	78
	图46 Fig.46	起升油缸(基本型) Lift cylinder (normal mast)	EFGHIJ	81
	图47 Fig.47	倾斜油缸 Tilt cylinder (normal mast)	ABCDEFGHJIJ	84
	图48 Fig.48	侧移管路(基本型) Side shifting pipeline (Normal mast)	ABCDEFGHJIJ	86
	图49 Fig.49	起升管路(基本型) Lift pipeline (normal mast)	ABCD	88
	图50 Fig.50	起升管路(基本型) Lift pipeline (normal mast)	EFGHIJ	90
	11	图51 Fig.51	多路阀操纵(五联) Multi-way valve control(quintuplex)	ABCDEFGHJIJ
12	图52 Fig.52	液压系统 Hydraulic system	ABCDEFGHJIJ	93
	图53 Fig.53	液压油箱 Hydraulic oil tank	ABCDEFGHJIJ	95
14	图54 Fig.54	护顶架 Overhead guard	ABCDEFGHJIJ	96
	图55 Fig.55	护顶架(双空滤) Overhead guard(double air filter)	ABCDEFGHJIJ	98
	图56 Fig.56	护顶架(油滤双空滤) Overhead guard(double air filter)	ABCDEFGHJIJ	100
15	图57 Fig.57	电气系统 Electric system	ABCDEFGHJIJ	102
	图58 Fig.58	信号灯电气元件总成 Electrical component assy.	ABCDEFGHJIJ	104
	图59 Fig.59	蓄电池盒总成 Battery box assy.	ABCDEFGHJIJ	105
	图60 Fig.60	电气系统 Electric system	ABCDEFGHJIJ	106
	图61 Fig.61	蓄电池盒总成 Battery box assy.	ABCDEFGHJIJ	108
16	图62 Fig.62	标牌 Label	ABCDEFGHJIJ	109
17	图63 Fig.63	平衡重 Counter weight	ABCDEFGHJIJ	111

图1/FIG.1

发动机总成/Engine assy.

- A D20M-3X5
- B D20-3X5
- C D25M-3X5
- D D25-3X5
- E D30M-3X5
- F D30-3X5
- G D35M-3X5
- H D35-3X5
- I D38M-3X5
- J D38-3X5



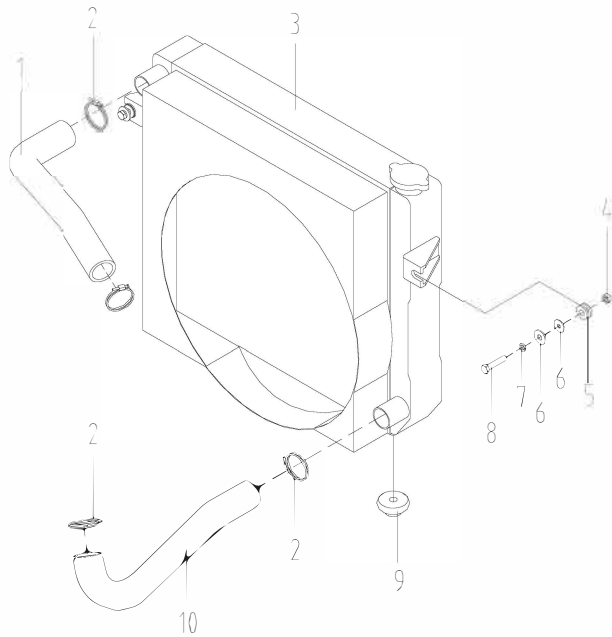
序号 Item No	编 码 Code	零部件名称 Description	数量 Q'ty	备 注 Remark
1	DFE3D61FB	发动机总成	1	新柴
	DFE3D6208	发动机总成	1	云内
	DFE3D62E0	发动机总成	1	全柴
	DFE3D681B	发动机总成	1	全柴
	DFE3D66DD	发动机总成	1	全柴
	DFE3D486E	发动机总成	1	新柴
2A	E2200A2AB	发动机支承总成	2	含2-7项
2	BF4944EA3	螺母M10	2	
3	E2200A2AC	垫片	2	总成带
4	E2200A2AD	垫片	4	总成带
5	E2200A2AE	减震垫	4	总成带
6	E2200A2AF	套管	2	总成带
7	BEBF1598A	螺栓M10×100	2	



图3/FIG.3

冷却系统/Cooling system

- A D20M-3X5
- C D25M-3X5
- E D30M-3X5
- G D35M-3X5
- I D38M-3X5

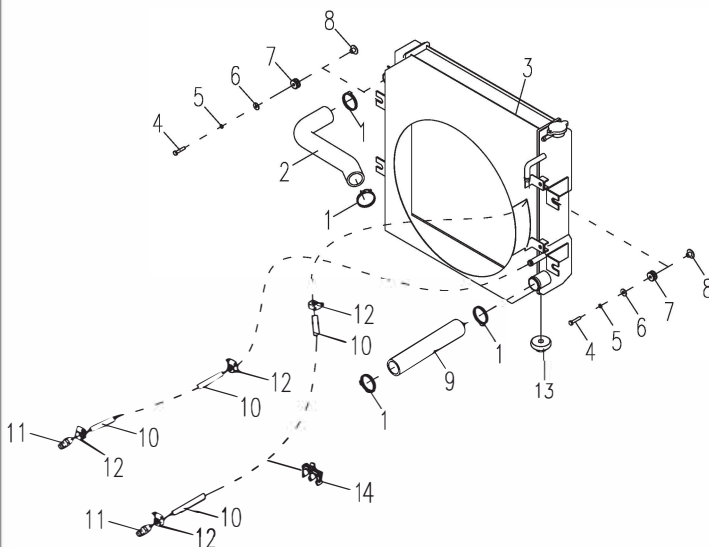


序号 Item No	编 码 Code	零部件名称 Description	数量 Q'ty	备 注 Remark
1	E2200A863	成型管 Molding pipe	1	
2	E2DEC656E	双钢丝卡箍d50 (45~50) Double steel wire lamp	4	
3	3FB4CCBCF	散热器总成 Radiator assy.	1	
4	BF222B457	螺母M8 Nut M8	4	
5	E2200A87F	组合胶圈 Combination rubber ring	4	
6	BF9D64826	垫圈8 Washer 8	4	
7	BF7BE643B	垫圈8 Washer 8	4	
8	BEBF12BD6	螺栓M8×40 Bolt M8×40	4	
9	6FC349809	减震垫 Damping cushion	2	
10	E2200AC5C	成型管 Molding pipe	1	

图4/FIG.4

冷却系统/Cooling system

- B D20-3X5
- D D25-3X5
- F D30-3X5
- H D35-3X5
- J D38-3X5

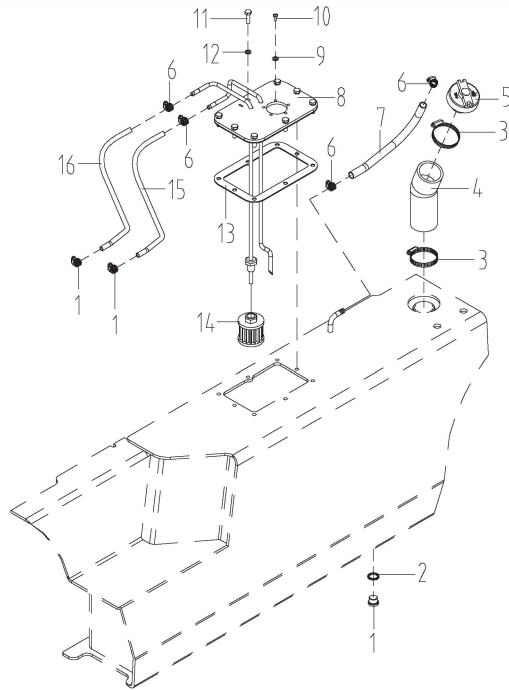


序号 Item No	编 码 Code	零 部 件 名 称 Description	数量 Q'ty	备 注 Remark
1	E2DEC63B4	双钢丝卡箍d45 (40~45) Double steel wire lamp	4	
2	E2200A863	成型管 Molding pipe	1	
3	3FB4CCBCE	散热器总成 Radiator assembly	1	
4	BEBF12BD6	螺栓M8×40 Bolt M8×40	2	
5	BF7BE643B	垫圈8 Washer 8	2	
6	BF9D64826	垫圈8 Washer 8	2	
7	E2200A87F	组合胶圈 Combination rubber ring	2	
8	BF222B457	螺母M8 Profiled nut	4	
9	E2200AC5C	成型管 Molding pipe	1	
10	E2200A2A5	胶管Φ13×4-L=2260 Hose	2	
11	E2200A2A6	过渡接头 Transition connector	2	
12	D140D79BD	喉箍d25 (16~25) Hoop d50 (32~50)	4	
13	6FC349809	减震垫 Damping cushion	2	
14	E22008818	管夹 Pipe clip	3	

图5/FIG.5

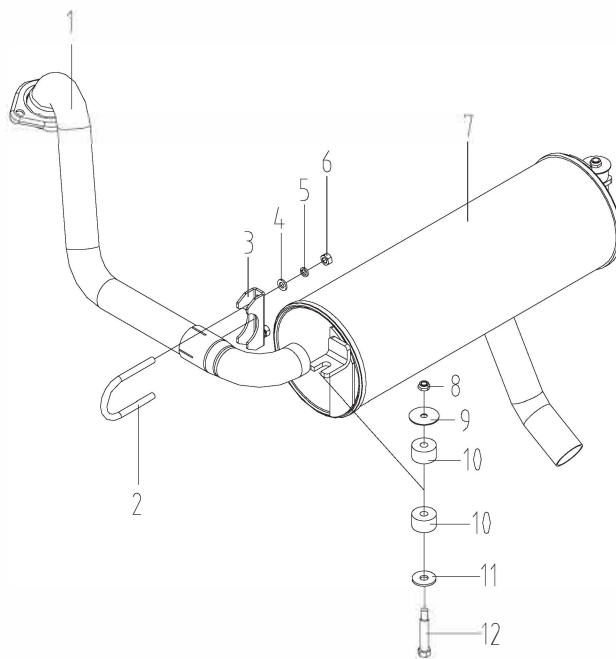
燃油装置总成/Fuel device assy.

- A D20M-3X5
- B D20-3X5
- C D25M-3X5
- D D25-3X5
- E D30M-3X5
- F D30-3X5
- G D35M-3X5
- H D35-3X5
- I D38M-3X5
- J D38-3X5



序号 Item No	编 码 Code	零部件名称 Description	数量 Q'ty	备 注 Remark
1	D1BDC59DA	螺塞M18×1.5 Screw plug	1	
2	D129F6429	组合垫圈18 Combination washer 18	1	
3	D140D74A9	喉箍d70 (50~70) Hoop d70 (50~70)	2	
4	E2200A97A	成型管 Molding pipe	1	
5	E32B0F84F	加油口盖 Oil filler cap	1	
6	D140D7125	喉箍d16 (10~16) Hoop d16 (10~16)	6	
7	6FC349919	塑料管 Plastic pipe	1	Φ8×2-L=145
8	E2200A8E0	燃油箱盖板焊合 Fuel tank cover plate weldment	1	
9	D129F3B25	组合垫圈5 Combination washer 5	5	
10	BE943BB24	螺钉M5×12 Screw M5×12	5	
11	BEC006C86	螺栓M8×20 Bolt M6×16	8	
12	D129F6B31	组合垫圈8 Combination washer 8	8	
13	E2200A8E3	密封垫 Seal gasket	1	
14	6FC33293D	滤芯总成 Filter element assembly	1	
15	6FC3498D2	胶管 Hose	1	Φ8×4-L=1300
16	6FC3498D3	胶管 Hose	1	Φ8×4-L=1200

- A D20M-3X5
- B D20-3X5
- C D25M-3X5
- D D25-3X5
- E D30M-3X5
- F D30-3X5
- G D35M-3X5
- H D35-3X5
- I D38M-3X5
- J D38-3X5



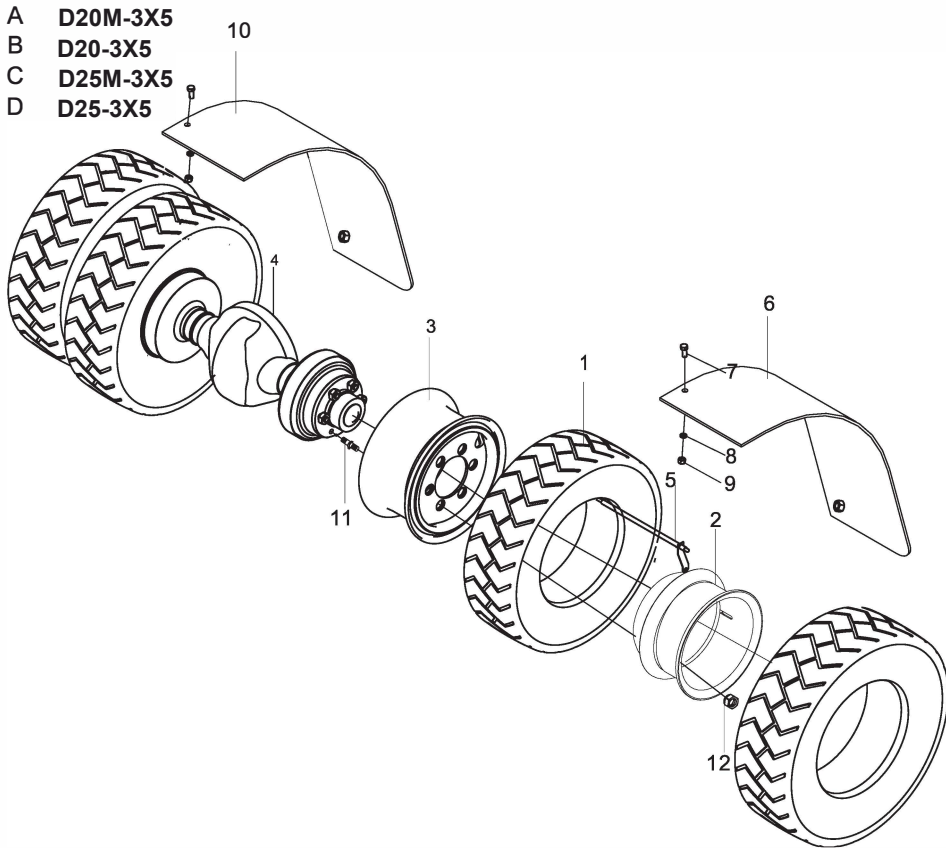
序号 Item No	编 码 Code	零部件名称 Description	数量 Q'ty	备 注 Remark
1	DFE3D69FF	排气管总成 Exhaust pipe assy.	1	
2A	6FC331619	U型卡总成 U-clamp assy.	1	含2-6项
2	6FC348869	U形螺栓 U bolt	1	
3	6FC3488CD	U型卡环套 U-clamp sheath	1	
4	BF8EF9143	垫圈8 Washer 8	2	
5	BF7BE643B	垫圈8 Washer 8	2	
6	BF222B457	螺母M8 Nut M8	2	
7	DFE3D61C0	消声器焊合(中排) Muffler weldment	1	
8A	E2200A2A9	组合垫圈 Combination washer	2	含8-12项
8	BF4944E3F	螺母M8 Nut M8	1	
9	E2200A2B8	垫片 Gasket	1	
10	E2200A2B7	橡胶块 Rubber block	2	
11	BF8E07619	垫圈10 Washer 10	1	
12	E2200A2B6	螺栓 Bolt	1	





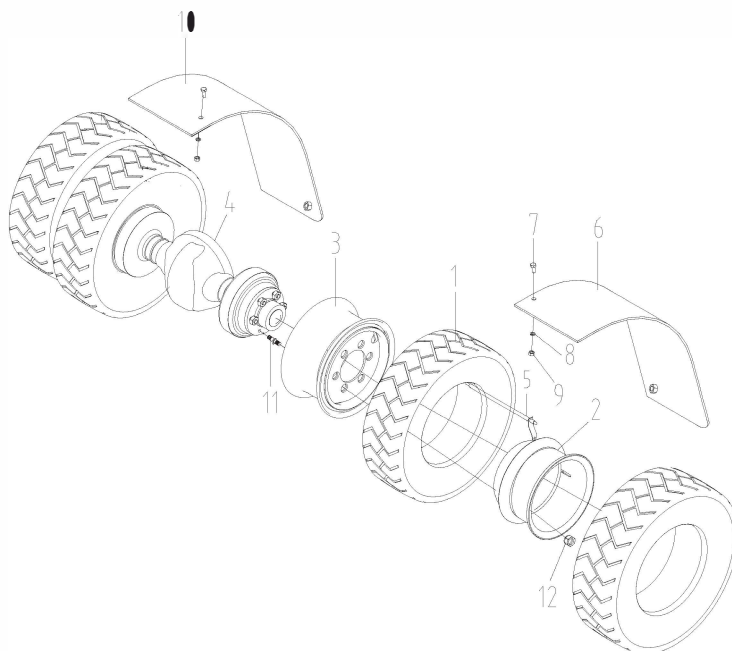
图9/FIG.9

驱动桥总成(双排) /  
Drive axle assy.(double tire)



序号 Item No	编 码 Code	零部件名称 Description	数量 Q'ty	备 注 Remark
1	E047F65EF	轮胎总成7.00-12-12PR      Tire 7.00-12-12PR	4	
2	E04331A72	轮辋总成5.00S-12              Rim 5.00S-12	2	
3	E04331A71	轮辋总成5.00S-12              Rim 5.00S-12	2	
4	6FC42906E	驱动桥总成                      Drive axle	1	
5	6FC4401BC	气阀加长管                      Lengthening pipe	2	
6	6FCA01906	挡泥板                              Baffle	1	
7	BEC00BBD2	螺栓M12×35                      Bolt	6	
8	BF8EFDF63	垫圈12                              Washer 12	12	
9	BF429800F	螺母M12                              Nut M12	6	
10	6FCA01907	挡泥板                              Baffle	1	
11	FD82806C0	轮毂螺母                              Hub nut	12	驱动桥带
12	FD82806BF	轮毂螺母                              Hub nut	12	驱动桥带

- E D30M-3X5
- F D30-3X5
- G D35M-3X5
- H D35-3X5
- I D38M-3X5
- J D38-3X5



序号 Item No	码 码 Code	零 部 件 名 称 Description	数 量 Q'ty	备 注 Remark
1	E047F65F7	轮胎总成28×9-15-14PR	4	
	E047F6565	黑色实芯轮胎28×9-15/7.0	4	
	E047F6566	白色实芯轮胎28×9-15/7.0	4	
2	E04333CE8	轮辋总成7.00T-15(双排)	2	
3	E04333CD9	轮辋总成7.00T-15	2	
4	E04333CD4	驱动桥总成	1	
5	6FC4401BC	气阀加长管	2	
6	6FCA0199D	挡泥板	1	
7	BEC00BC36	螺栓M12×40	8	
8	BF8E09D29	垫圈12	8	
9	BF4944F07	螺母M12	8	
10	6FCA0199C	挡泥板	1	
11	FD82806BF	双胎柱螺母	12	
12	FD82806C0	双胎柱螺母	12	

图11/FIG.11

驱动桥/Drive axle

- A D20M-3X5
- B D20-3X5
- C D25M-3X5
- D D25-3X5

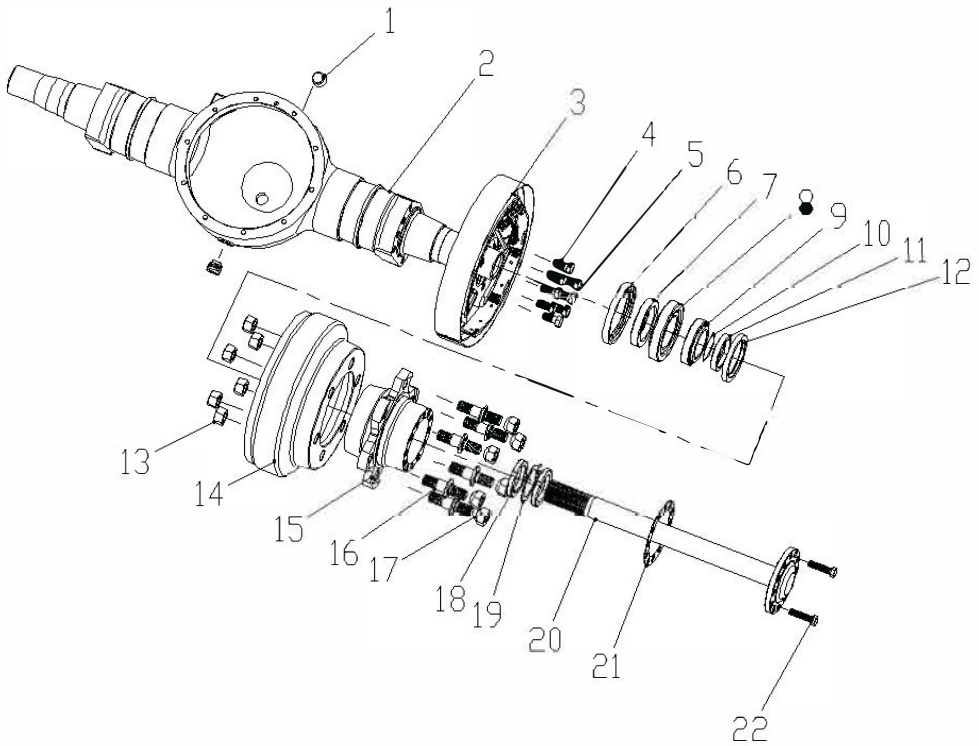
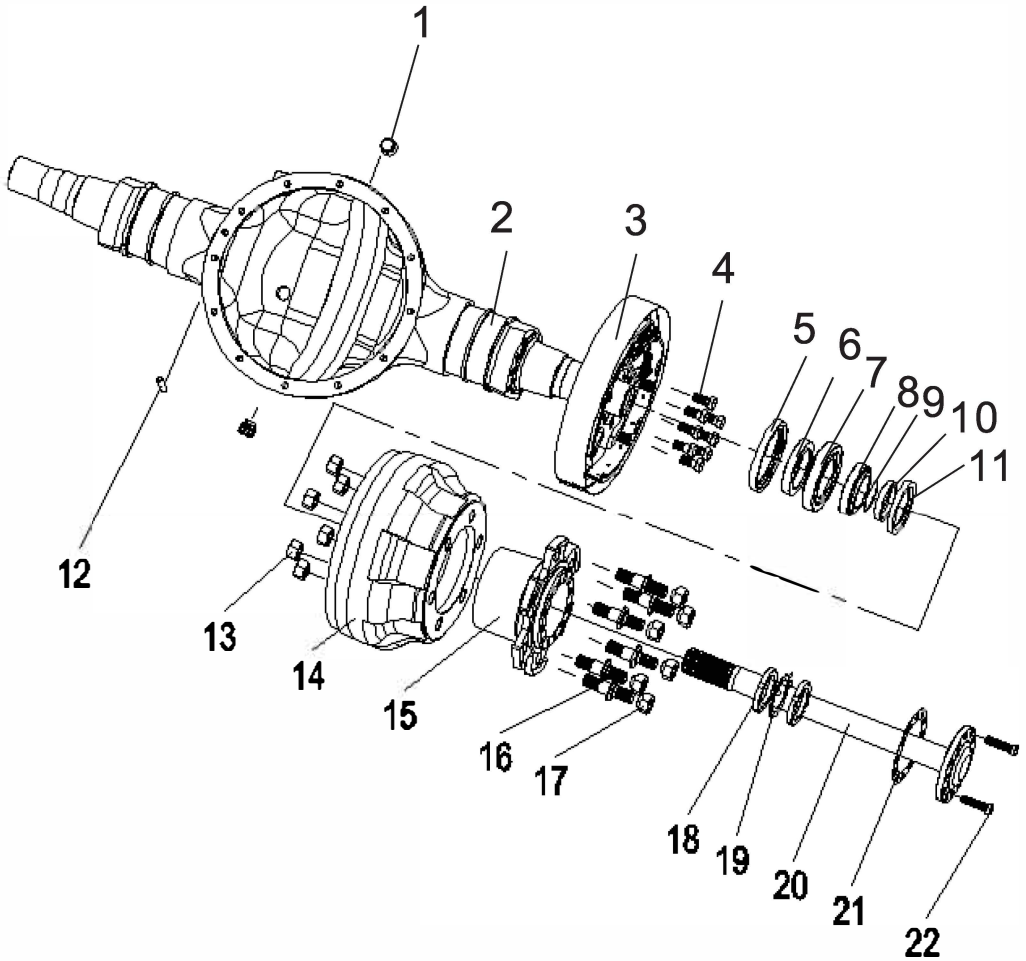




图12/FIG.12

驱动桥/Drive axle

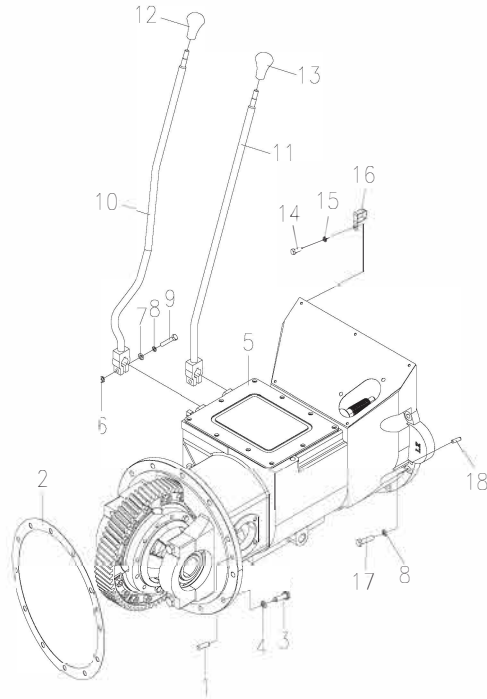
- A D30M-3X5
- B D30-3X5
- C D35M-3X5
- D D35-3X5
- E D38M-3X5
- F D38-3X5





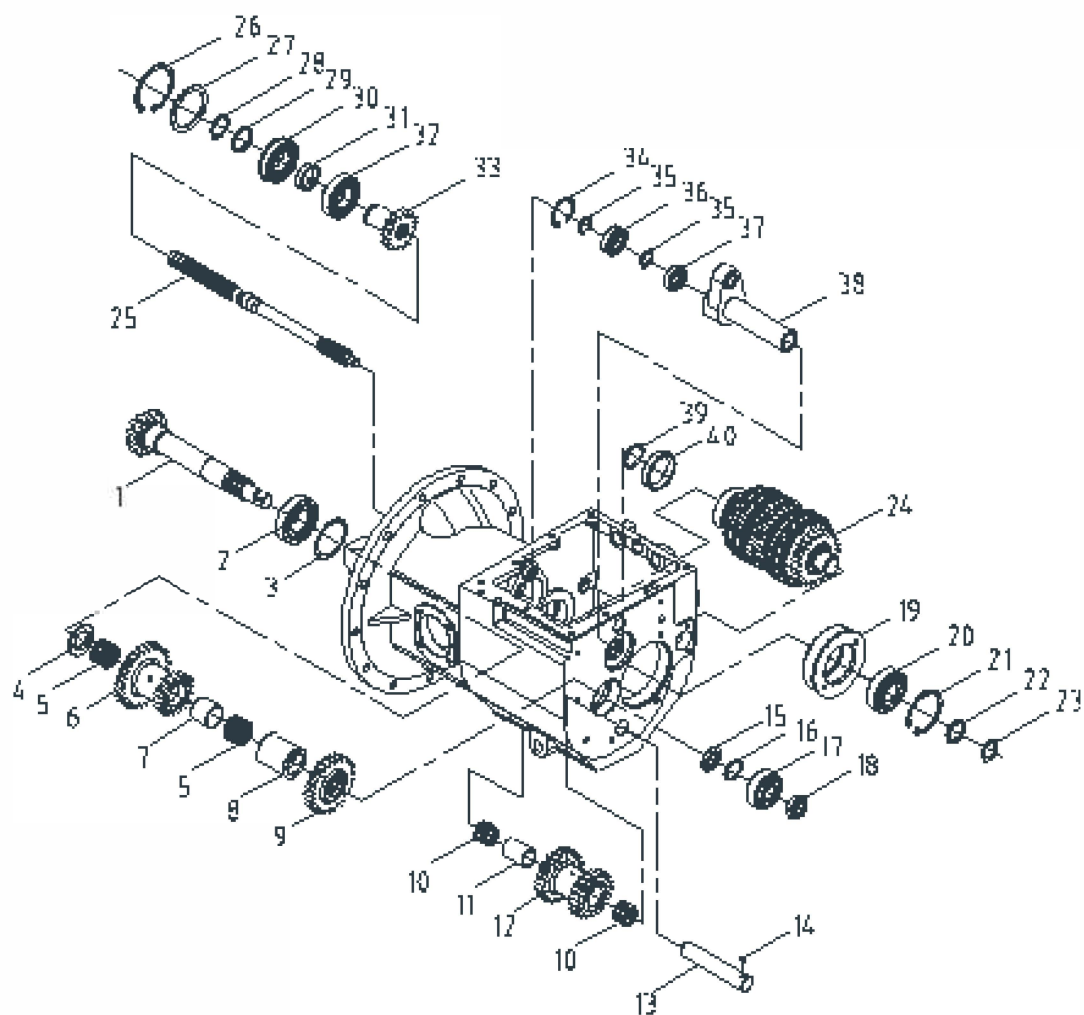
**图13/FIG.13**

**A D20M-3X5**  
**C D25M-3X5**  
**E D30M-3X5**  
**G D35M-3X5**  
**I D38M-3X5**



序号 Item No	编 码 Code	零部件名称 Description	数量 Q'ty	备 注 Remark
1	BFEA8E4A6	销10×30 Pin 10×30	1	驱动桥带
2	6FC34A1CF	密封垫 Seal gasket	1	
3	BEC2E9232	螺栓M12×1.25×35 Bolt M12×1.25×35	12	
4	BF7BEB25B	垫圈12 Washer 12	12	
5	DFE3D6888	变速箱总成 Transmission assy.	1	JDS30IIS3-1
6	BF222B457	螺母M8 Nut M8	2	
7	BF8EF9143	垫圈8 Washer 8	2	
8	BF7BE643B	垫圈8 Washer 8	8	
9	BEC006E16	螺栓M8×40 Bolt M8×40	2	
10	E2200A1A3	变速杆焊合 Speed control lever weldment	1	
11	E2200A1A4	换向杆焊合 Converse lever weldment	1	
12	E2200A1C3	手柄 Handle	1	
13	E2200A2C3	手柄 Handle	1	
14	BEC0094C2	螺栓M10×35 Bolt M10×35	9	
15	BF7BE8B4B	垫圈10 Washer 10	9	
16	6FC43D598	管夹 Pipe clip	2	
17	BEC006C86	螺栓M8×20 Bolt M8×20	6	
18	BFE6BB1DA	销6×16 Pin 6×16	3	发动机带

- A D20M-3X5
- C D25M-3X5
- E D30M-3X5
- G D35M-3X5
- I D38M-3X5



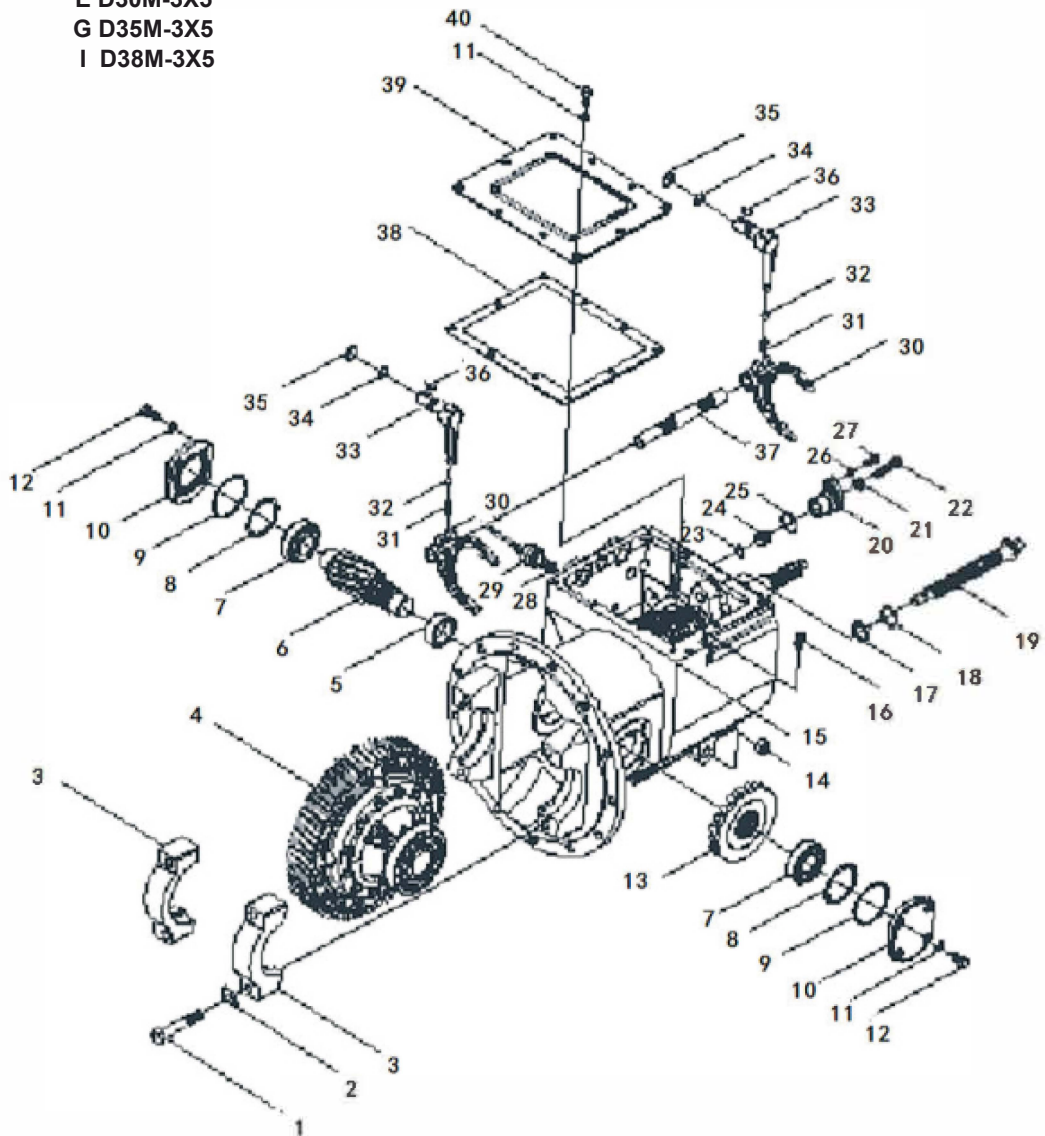
## 换挡变速部分1/Shifting& speed part1

序号 Item No	编 码 Code	零部件名称 Description	数量 Qty	备 注 Remark
1	J30H-04001	输出轴 output shaft	1	
2	GB/T297	圆锥滚子轴承32208 Tapered roller bearing	1	
3	J30H-04009	输出轴垫片 output shaft gasket	按需	
4	J30H-04008	止推垫圈 Thrust washer	1	
5	JB/T7918	滚针轴承K35*40*27 Needle bearing	2	
6	JDS37-04004-2	双联齿轮 Duplex gear	1	
7	J30H-04005	输出轴衬套 (II) Output shaft bushing II	1	
8	J30H-04003	输出轴衬套 (I) Output shaft bushing I	1	
9	JDS37-04002-2	输出齿轮 Output gear	1	
10	JB/T7918	滚针轴承K25*33*24 Needle bearing	2	
11	J30H-05003	惰轮轴衬套 Idler wheel bushing	1	
12	JDS37-05002-2	惰轮 idler wheel	1	
13	J30H-05001	惰轮轴 idler wheel shaft	1	
14	GB/T308	钢球6. 350G200b Steel ball	1	
15	J30H-04006	止推板 Thrust plate	1	
16	J30H-04007	弹簧垫圈 Spring washer	1	
17	GB/T297	圆锥滚子轴承32305 Tapered roller bearing	1	
18	J30H-04011	防松螺母 Anti-loose nut	1	
19	J30H-03001A	轴承保持圈 Bearing holding ring	1	
20	GB/T276	深沟球轴承6306 Deep groove ball bearing	1	
21	GB/T893.1	弹性挡圈72 Spring sprag	1	
22	J30H-03007	主轴隔圈 Main shaft spacer	1	
23	GB/T894.1	弹性挡圈30 Spring sprag	1	
24	J30H-03000B	主轴总成 Main shaft assy.	1	
25	J30H-02001	主动轴 Drive shaft	1	
26	GB/T893.1	弹性挡圈80 Spring sprag	1	
27	J30H-02007	轴承垫圈 Bearing washer	1	
28	GB/T894.1	弹性挡圈35 Spring sprag	1	
29	J30H-02010	输入隔圈 Input spacer	1	
30	GB/T276	深沟球轴承6207NR Deep groove ball bearing	1	
31	J30H-02009	隔套 Distance spacer	1	
32	GB/T276	深沟球轴承6207 Deep groove ball bearing	1	
33	JDS37-02002-2	输入齿轮 Input gear	1	
34	GB/T893.1	弹性挡圈47 Spring sprag	1	
35	GB/T894.1	弹性挡圈25 Spring sprag	2	
36	GB/T276	深沟球轴承6005 Deep groove ball bearing	1	



图15/FIG.15

- A D20M-3X5
- C D25M-3X5
- E D30M-3X5
- G D35M-3X5
- I D38M-3X5



## 换挡变速部分2/Shifting& speed part 2

序号 Item No	编 码 Code	零 部 件 名 称 Description	数量 Q'ty	备 注 Remark
1	Y30H-01010	轴承座螺栓 Bearing seat bolt	4	
2	Y30H-01008	轴承座锁片 Bearing seat split	4	
3	Y30H-01002	轴承座 Bearing seat	2	
4	Y30H-10000	差速器总成 Differential assy.	1	
5	Y30H-09004	齿轴衬套 Gear shaft bushing	1	
6	Y30H-09003	齿轴 Gear shaft	1	
7	GB/T297	圆锥滚子轴承32207 Tapered roller bearing	2	
8	Y30H-09002	齿轴垫片 Gear shaft gasket	按需	
9	GB1235	O形密封圈75*3.1 O ring	2	
10	Y30H-09001	轴承盖 Bearing cover	2	
11	GB/T93	弹簧垫圈10 Spring washer 10	18	
12	GB/T5783	螺栓M10*25 Bolt M10×25	8	
13	Y30H-09005	螺旋伞齿轮 Twisted bevel gear	1	
14	JB/ZQ4446	螺塞Rc1/2" Plug Screw	1	
15	J30H-01001	机械箱体 Mechanic case	1	
16	J30H-01100	通气塞总成 Air vent plug	1	
17	GB1235	O形密封圈28*3.5 O seal ring	1	
18	J30H-02006	外齿弹性垫圈 external gear spring washer	1	
19	J30H-02005	滑动螺栓 Slide bolt	1	
20	J30H-06004	轴臂 Shaft arm	1	
21	GB/T6170	螺母M10 Nut M10	1	
22	GB/T5783	螺栓M10*45 Bolt M10×45	1	
23	GB1235	O形密封圈20*2.4 O seal ring	1	
24	J30H-06005	塞 Plug	1	
25	GB1235	O形密封圈35*3.1 O seal ring	1	
26	GB/T93	弹簧垫圈8 Spring washer 8	2	
27	GB/T5783	螺栓M8*20 Bolt M8×20	2	
28	Y30H-07009	倒车灯衬垫 Reverse lamp bushing	2	
29	J30H-01004H	倒车灯开关 Reverse lamp switch	2	
30	J30H-06002	换挡拨叉 Shifting fork	2	
31	J30H-06006-1	拨叉弹簧 Fork spring	2	
32	GB/T308	钢球10.000G200b Steel ball	2	
33	J30H-06001	转动杆 Rotary rod	2	
34	GB1235	O形密封圈22*2.4 O seal ring	2	
35	GB/T894.1	弹性挡圈22 Spring sprag	2	
36	GB/T1099	半圆键5*19 Half- round key	2	



图16/FIG.16

- A D20M-3X5
- C D25M-3X5
- E D30M-3X5
- G D35M-3X5
- I D38M-3X5

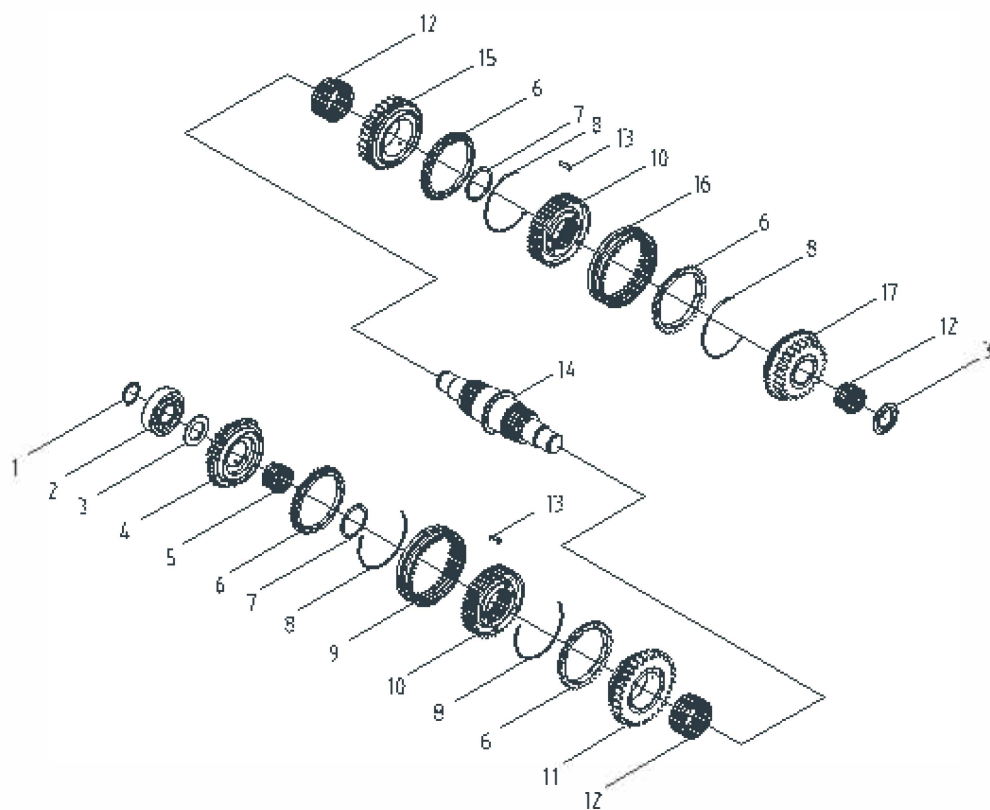
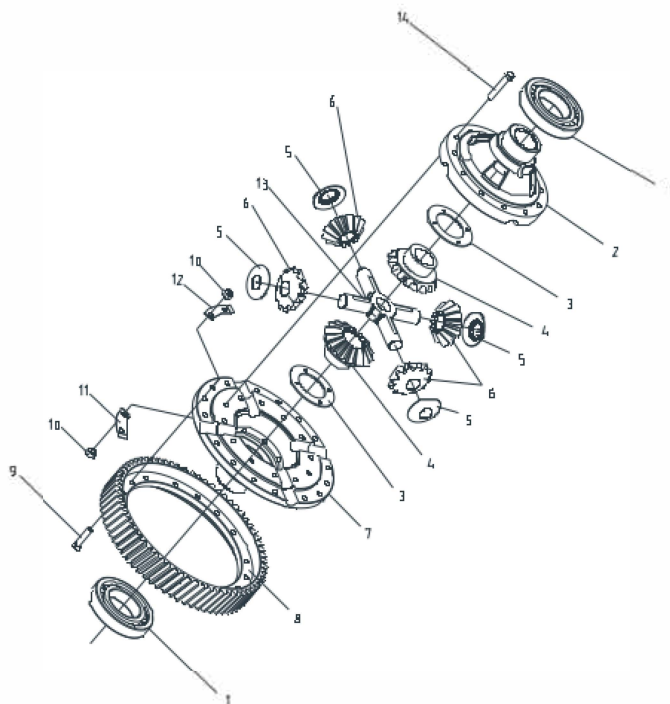




图17/FIG.17

差速器部分/  
Differential part

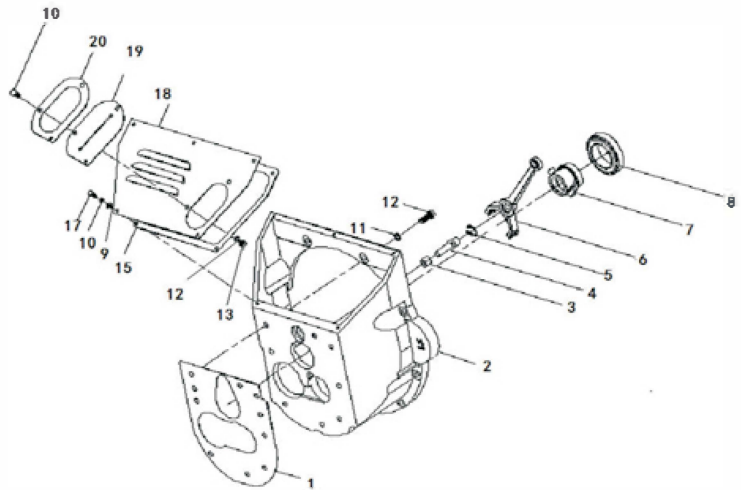
A D20M-3X5  
C D25M-3X5  
E D30M-3X5  
G D35M-3X5  
I D38M-3X5



序号 Item No	编 码 Code	零 部 件 名 称 Description	数量 Q'ty	备 注 Remark
1	GB/T276	深沟球轴承6213      Deep groove ball bearing	2	
2	Y30H-10002	左差速器壳              Left differential case	1	
3	Y30H-10006	半轴垫圈                Axle shaft washer	2	
4	Y30H-10007	半轴齿轮                Axle shaft gear	2	
5	Y30H-10004	行星垫圈                Planetary washer	4	
6	Y30H-10005	行星齿轮                Planetary gear	4	
7	Y30H-10001	右差速器壳              Right differential case	1	
8	Y30H-10012	齿圈                      Ring gear	1	
9	Y30H-10010A	齿圈螺栓                Ring gear bolt	16	
10	GB/T6171	螺母M10*1.25            Nut M10	28	
11	Y30H-10009A	差壳锁片                Diff. case lock split	6	
12	Y30H-10011A	齿圈锁片                Gear ring split	8	
13	Y30H-10003	十字轴                    Sprider	1	
14	Y30H-10008A	差壳螺栓                Diff. case bolt	12	

**图18/FIG.18**
**离合器部分/Clutch part**

A D20M-3X5  
 C D25M-3X5  
 E D30M-3X5  
 G D35M-3X5  
 I D38M-3X5



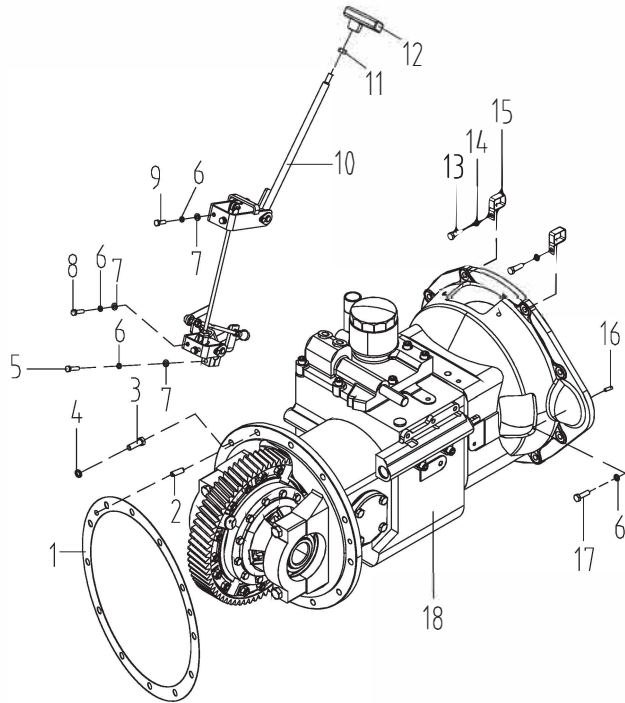
序号 Item No	编 码 Code	零部件名称 Description	数量 Q'ty	备 注 Remark
1	J30H-07002	离合器壳衬垫 Clutch case bushing	1	
2	J30H-07001	离合器壳 Clutch case	1	
3	J30H-07010	调整螺母 Adjustment Nut	1	
4	J30H-07006A	分离叉球形支柱 Ball Pivot	1	
5	J30H-07005	弹性挡圈 Spring sprag	1	
6	J30H-07003	分离叉 Separate fork	1	
7	J30H-07004	分离轴承套筒 Separate bearing sleeve	1	
8	9688211	分离轴承 Separate bearing	1	
9	GB/T97.1	平垫圈6 Flat washer 6	5	
10	GB/T5783	螺栓M8*16 Bolt M8×16	2	
11	GB/T93	弹簧垫圈10 Spring washer 10	7	
12	GB/T5783	螺栓M10*30 Bolt M10×30	7	
13	GB/T6170	螺母M8 Nut M8	2	
14	GB/T93	弹簧垫圈8 Spring washer 8	2	
15	J30H-07012A	离合器盖衬垫 Clutch cover bushing	1	
16	GB/T93	弹簧垫圈6 Spring washer 6	5	
17	GB/T5783	螺栓M6*16 Bolt M6×16	5	
18	J30H-07007A	离合器盖 Clutch cover	1	



图19/FIG.19

变速箱总成/  
Transmission assy.

B D20-3X5  
D D25-3X5  
F D30-3X5  
H D35-3X5  
J D38-3X5

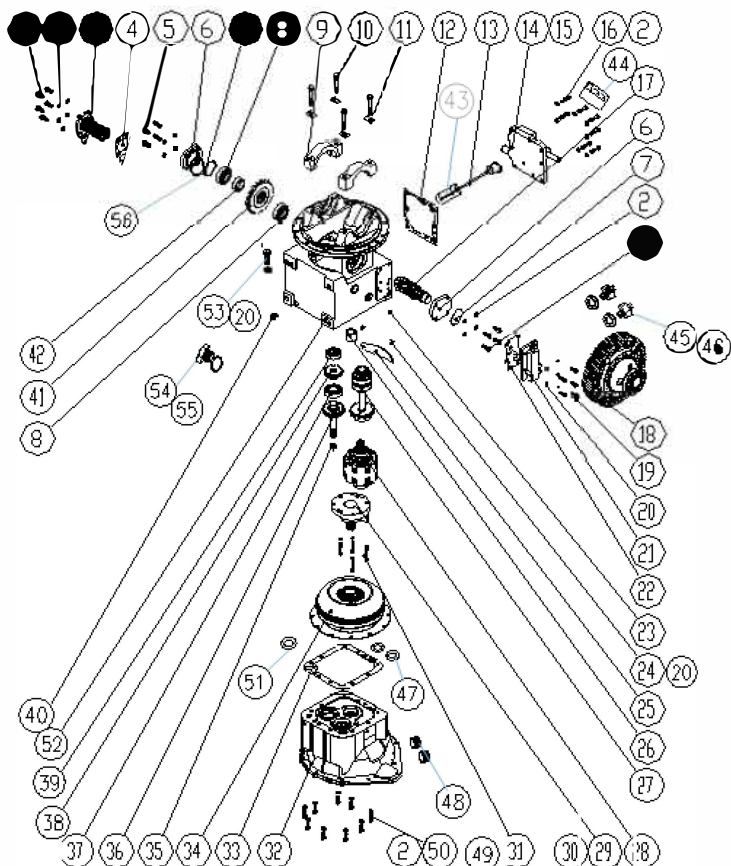


序号 Item No	编 码 Code	零部件名称 Description	数量 Q'ty	备 注 Remark
1	6FC34A1CF	密封垫 Seal gasket	1	驱动桥带
2	BFEA8E4A6	销10×30 Pin 10×30	1	
3	BEC2E9232	螺栓M12×1.25×35 Bolt M12×1.25×35	12	
4	BF7BEB25B	垫圈12 Washer 12	12	
5	BEBF12BD6	螺栓M8×40 Bolt M8×40	1	
6	BF7BE643B	垫圈8 Washer 8	11	
7	BF8EF9143	垫圈8 Washer 8	5	
8	BEC006D4E	螺栓M8×30 Bolt M8×30	2	
9	BEC006CEA	螺栓M8×25 Bolt M8×25	2	
10	E2200A881	变速操纵总成 Speed control assy.	1	
11	BF222B4BB	螺母M10 Nut M8	1	
12	E2200A1D7	变速手柄球 Speed handle ball	1	
13	BEC0094C2	螺栓M10×35 Bolt M10×35	9	
14	BF7BE8B4B	垫圈10 Washer 10	9	
15	6FC349358	管夹 Pipe clip	2	
16	BFE6BB1DA	销6×16 Pin 6×16	3	发动机带
17	BEC006C86	螺栓M8×20 Bolt M8×20	6	
18	6FC427FEA	变速箱总成 Transmission assy.	1	

图20/FIG.20

变速箱总成/Transmission assy.

- B D20-3X5
- D D25-3X5
- F D30-3X5
- H D35-3X5
- J D38-3X5

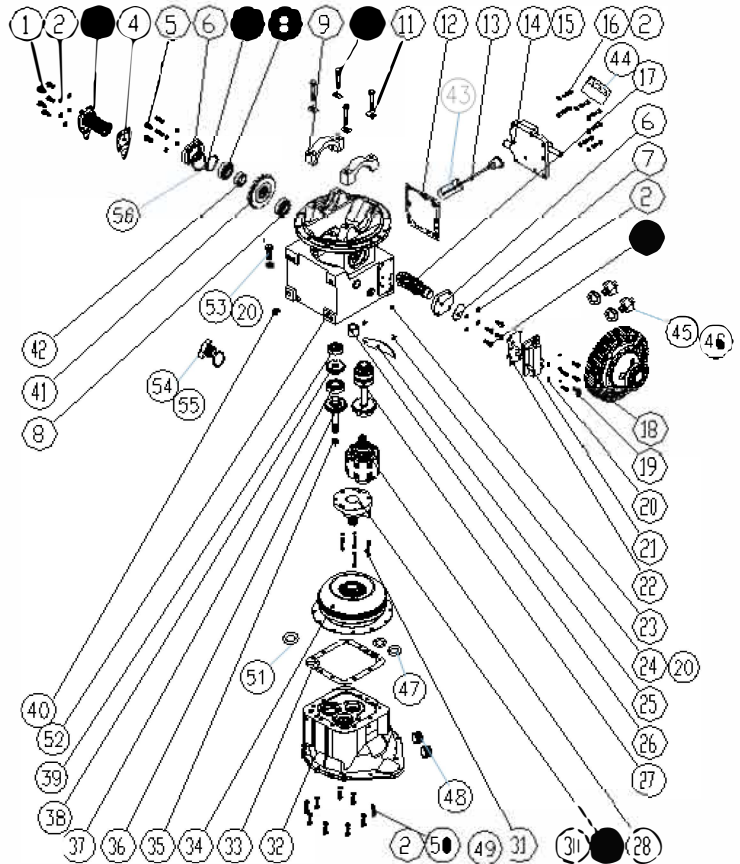


序号 Item No	编 码 Code	零 部 件 名 称 Description	数量 Q'ty	备 注 Remark
1	GB/T70.1	螺钉M10X30/ M10X20      Screw M10X30/ M10X20	4/1	
2	GB/T93	垫圈10      Washer 10	30	
3	LGX030CA.03.08	过滤器组件      Filter element	1	
4	LGX030CA.03.08-004	纸垫      Paper gasket	1	隶属于序号3
5	GB/T5783	螺栓M10X25      Bolt M10X25	8	
6	LGX030CA.03-001	端盖      End cover	2	
7	GB/T3452.1	O形圈73X2.65      O-ring 73X2.65	2	
8	GB/T297	轴承32207/p5      Bearing 32207/p5	2	
9	LGX030XV.01-005	轴承盖      Bearing cover	2	
10	GB/5785	螺栓M14X1.5X80      Bolt M14X1.5X80	4	
11	LGX030CA.03.02-003	锁紧垫片      Lock gasket	4	
12	LGX030CA.03-002	纸垫      Paper gasket	1	
13	LGX030CA.03.07	油标组件      Oil dipstick element	1	
14	15583-80211	操纵阀总成      Control valve assy.	1	

图20/FIG.20

变速箱总成/Transmission assy.

- B D20-3X5
- D D25-3X5
- F D30-3X5
- H D35-3X5
- J D38-3X5

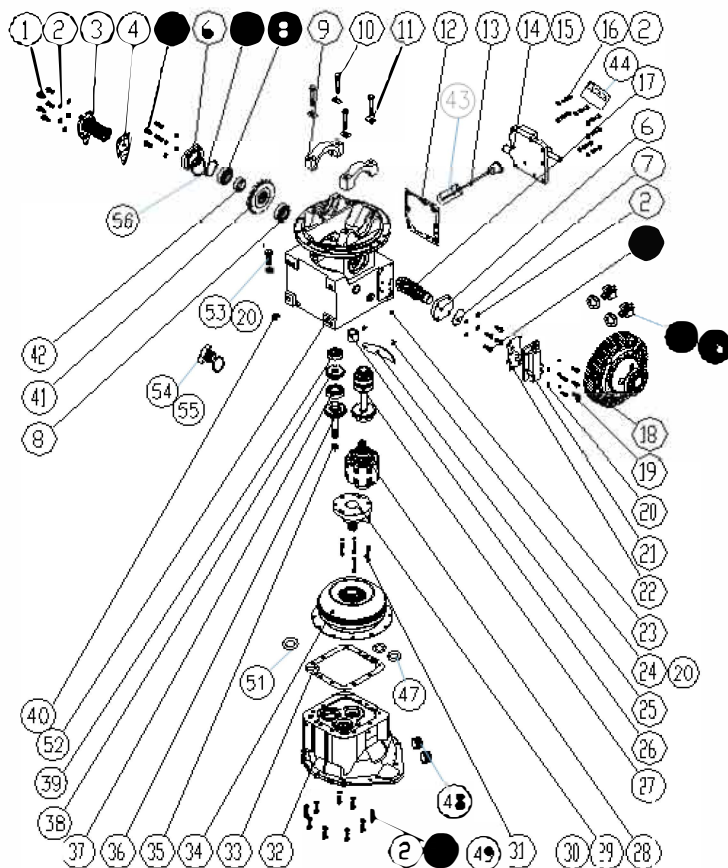


序号 Item No	编 码 Code	零 部 件 名 称 Description	数 量 Q'ty	备 注 Remark
15	GB/T3452.1	螺钉M10X30/ M10X20	O-ring 6x1.8	2
16	GB/T5782	垫圈10	Bolt M10X40/ M10X55	6/2
17	LGX030CA.03.03-003	过滤器组件	End shaft	1
18	LGX030CA.03.01	纸垫	Differential element	1
19	GB/T5783	螺栓M10X25	Bolt M8X25/ M8X50	3/2
20	GB/T93	端盖	Washer 8	11
21	15583-80201	O形圈73X2.65	Inching valve assy.	1
22	LGX030CA.03-005	轴承32207/p5	Paper gasket	1
23	LGX030CA.02-006	轴承盖	Plug screw	1
24	GB/T818	螺栓M14X1.5X80	Screw M8X10	2
25	LGX030CA.02-001	锁紧垫片	Cover	1
26	GB/T119.2	纸垫	Pin 12 X26	2
27	LGX030CA.03.04	油标组件	Output shaft element	1
28	LGX030CA.03.06	操纵阀总成	Clutch element	1

图20/FIG.20

变速箱总成/Transmission assy.

- B D20-3X5
- D D25-3X5
- F D30-3X5
- H D35-3X5
- J D38-3X5

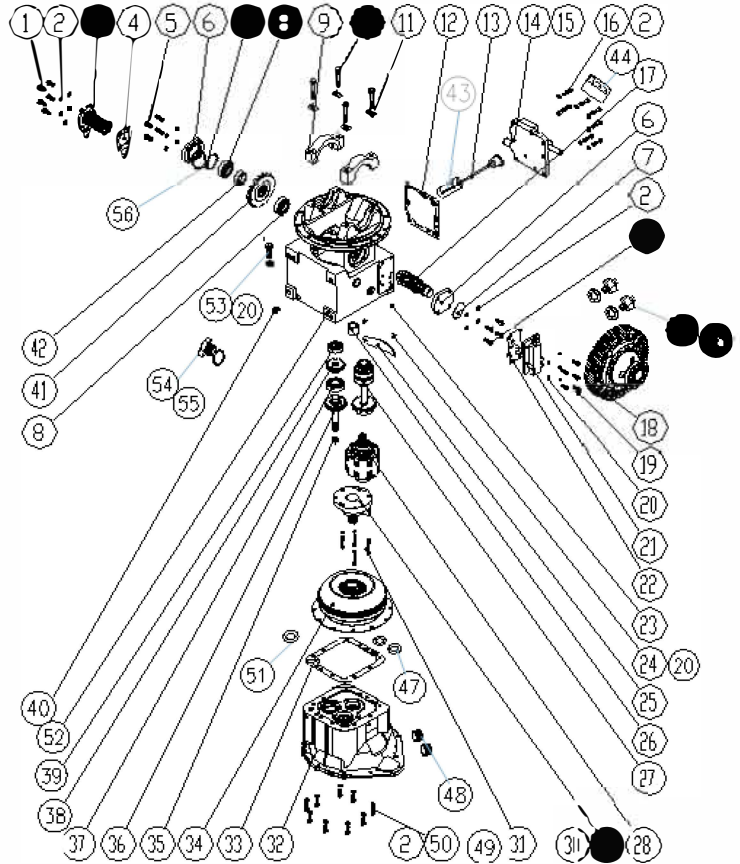


序号 Item No	编 码 Code	零 部 件 名 称 Description	数量 Q'ty	备 注 Remark
29	YDS30.906	变速泵总成 Speed pump assy.	1	
30	LGX030CA.02-004	油泵密封纸垫 Seal paper gasket	1	
31	GB/T5783	螺栓M8X40/ M8X45 Bolt M8X40/ M8X45	2/4	
32	LGX030CA.02-003	变矩器壳体 Torque converter case	1	
33	LGX030CA.02-005	纸垫 Paper gasket	1	
34	YJH265D-2	变矩器机芯 Machine core	1	
35	GB/T893.1	孔用挡圈24 Snap ring 24	1	
36	LGX030CA.03.05-001	惰轮轴 Idler shaft	1	
37	GB/T276	轴承6207/p6 Bearing 6207/p6	1	
38	LGX030CA.03.05-002	惰轮 Idler shaft	1	
39	GB/T276	轴承6206/p6 Bearing 6206/p6	1	
40	LGX030XV.01-004	油塞 Oil seal	5	
41	LGX030CA.03.03-001	螺旋伞齿轮 Spiral gear	1	
42	LGX030CA.03.03-002	隔套 Spacer	1	

图20/FIG.20

变速箱总成/Transmission assy.

- B D20-3X5
- D D25-3X5
- F D30-3X5
- H D35-3X5
- J D38-3X5

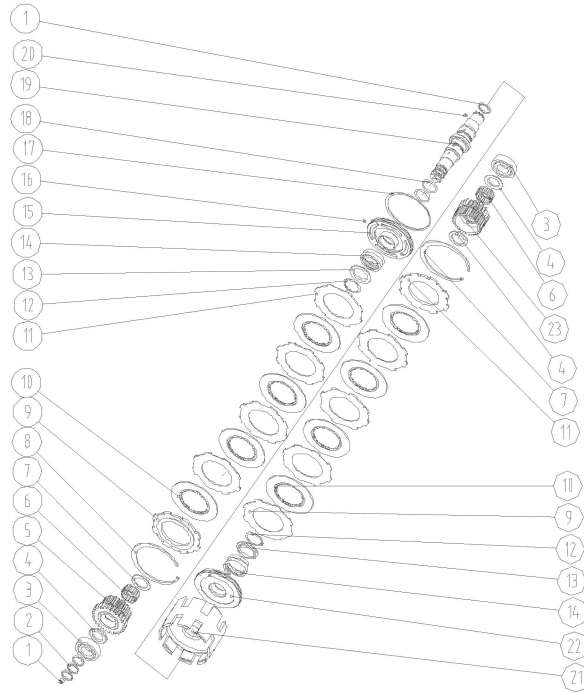


序号 Item No	编 码 Code	零部件名称 Description	数量 Q'ty	备 注 Remark
43	LGX030CA.03-003	油管 Oil pipe	1	
44	JX0805A2	机油滤清器 Engine oil filter	1	
45	JK208	档位开关 Gear position switch	2	
46	LGX030XV-013	纸垫圈 Paper washer	2	
47	GB/T1235	O形圈16x2.4 O-ring 16x2.4	2	
48	JB/ZQ4446	锥管螺纹内六角螺塞R1/4" Screw plug	2	
49	GB/T97.1	垫圈8 Washer 8	6	
50	GB/T5783	螺栓M10X30/M10X50/M10X55/M10X75 Bolt	4/1/3/1	
51	GB/T1235	O形圈24x2.4 O- ring 24x2.4	1	
52	LGX030CA.03.02-001	箱体 Transmission body	1	
53	GB/T5783	螺栓M8X20 Bolt M8X20	4	
54	LGX030CA.03-004	螺塞 Plug	1	
55	JB982	组合垫圈16 Combination washer 16	1	
56	LGX030CA.03.03-004	调整垫片 Adjustment gasket	1组	

图21/FIG.21

离合器总成/Clutch assy.

- B D20-3X5
- D D25-3X5
- F D30-3X5
- H D35-3X5
- J D38-3X5



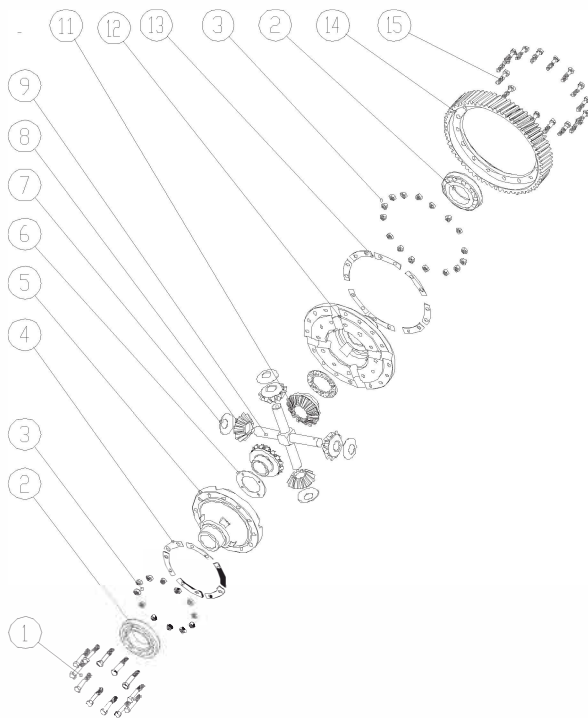
序号 Item No	编 码 Code	零 部 件 名 称 Description	数量 Q'ty	备 注 Remark
1	LGB/T78	螺钉M8X8 Screw M8X8	2	
2	LGX030CA.03.06-001	密封环 Seal ring	4	
3	GB/T276	轴承6206/p5 Bearing 6206/p5	2	
4	LGX030CA.03.06-002	止推环 I Thrust ring I	2	
5	LGX030CA.03.06-012	倒档齿轮 Reverse gear	1	
6	JB/T7918	滚针轴承K35X42X20 Needle bearing	2	
7	LGX030CA.03.06-008	止推环 II Thrust ring II	2	
8	LGX030CA.03.06-005	挡圈 Snap ring	2	
9	LGX030CA.03.06-003	挡板 Baffle	2	
10	LGX030CA.03.06.03	摩擦片 Friction plate	8	
11	LGX030CA.03.06-004	隔片 Distance plate	8	
12	GB/T 894.1	轴用挡圈40 Snap ring 40	2	
13	LGX030CA.03.06-009	弹簧座 Spring seat	2	
14	LGX030CA.03.06-010	弹簧 Spring	2	
15	LGX030CA.03.06.02-001	活塞 Piston	2	
16	GB/T 308	钢球1/8" Steel ball 1/8"	2	
17	LGX030CA.03.06-011	密封环 Seal ring	2	
18	GB/T3452.1	O形圈33. 5X3. 55 O-rig 33.5X3.55	2	



图22/FIG.22

差速器组件/Diff. element.

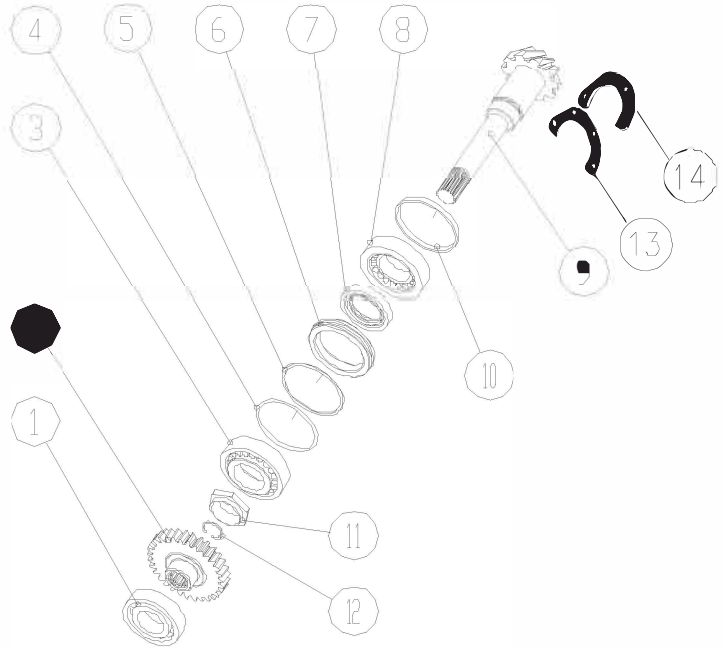
- B D20-3X5
- D D25-3X5
- F D30-3X5
- H D35-3X5
- J D38-3X5



序号 Item No	编 码 Code	零部件名称 Description	数量 Q'ty	备 注 Remark
1	LGX030CA.03.01-010	螺栓2 Bolt 2	12	
2	GB/T276	轴承 6213/P6 Bearing	2	
3	GB/T6170	螺母M10 Nut	28	
4	LGX030CA.03.01-006	锁紧垫片1 Lock gasket	6	
5	LGX030CA.03.01.01-001	差速器左壳 Left case	1	
6	LGX030CA.03.01-001	半轴齿轮垫片 Gear gasket	2	
7	LGX030CA.03.01-004	行星轮垫片 Planetary gear gasket	4	
8	LGX030CA.03.01-005	行星轮 Planetary gear	4	
9	LGX030CA.03.01-007	十字轴 Spider	1	
11	LGX030CA.03.01-002	半轴齿轮 Axle shaft gear	2	
12	LGX030CA.03.01.01-002	差速器右壳 Differential right case	1	
13	LGX030CA.03.01-008	锁紧垫片2 Lock gasket 2	8	
14	LGX030CA.03.01-003	斜齿轮 Sprial gear	1	
15	LGX030CA.03.01-009	螺栓 Bolt	16	

**图23/FIG.23**
**输出轴组件/Output shaft element**

B D20-3X5  
 D D25-3X5  
 F D30-3X5  
 H D35-3X5  
 J D38-3X5

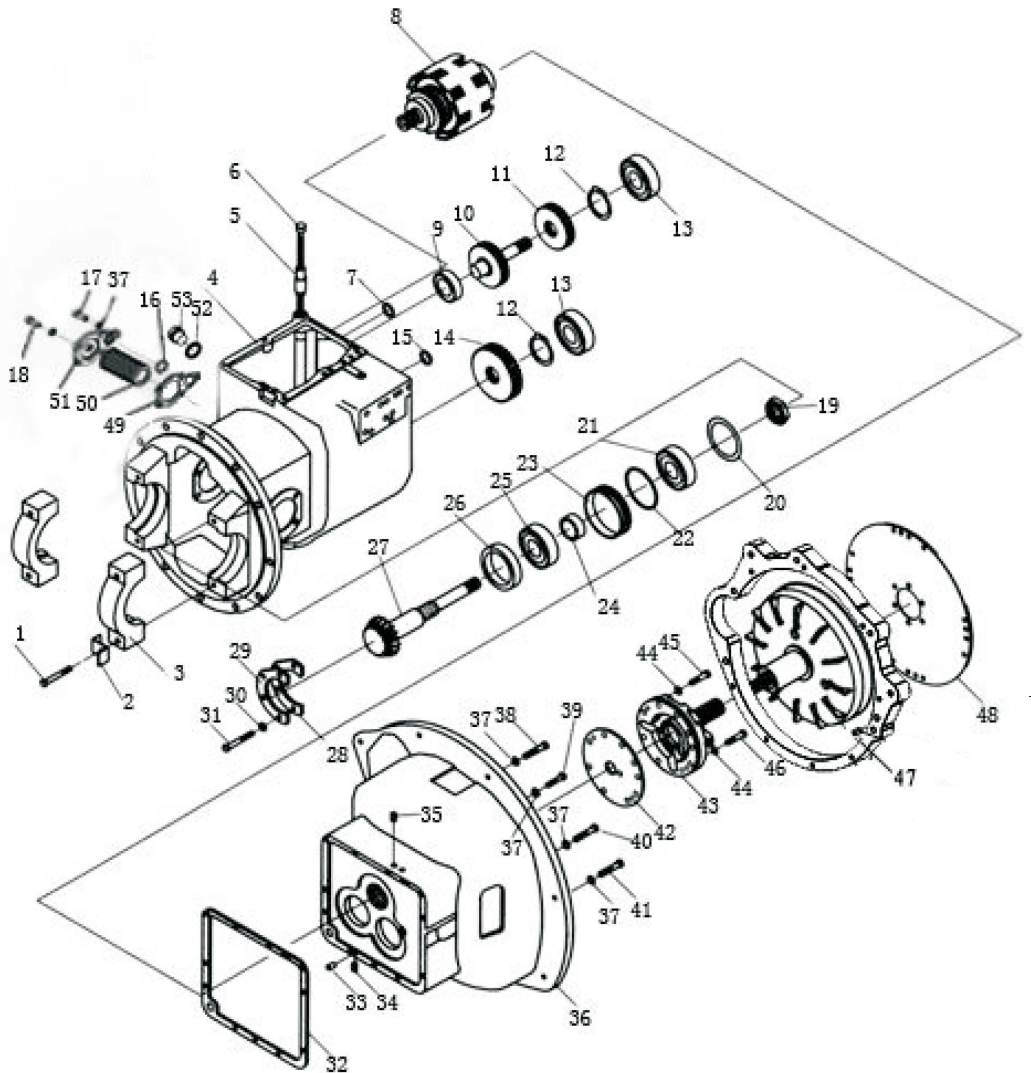


序号 Item No	编 码 Code	零部件名称 Description	数量 Q'ty	备 注 Remark
1	GB/T276	滚动轴承 6207/p6 Needle bearing	1	
2	LGX030CA.03.04-004	输出齿轮 Output gear	1	
3	GB/T297	圆锥滚子轴承30208/p5 Tapered roller bearing	1	
4	GB/T1235	O形圈80X3.1 O-ring	1	
5	LGX030CA.03.04-003	调整垫片 Adjustment gasket	1组	
6	LGX030CA.03.04-006	油封座 Oil seal seat	1	
7	GB/T13871.1	骨架油封FB40X62X10 Frame oil seal	1	
8	GB/T297	圆锥滚子轴承32208/p5 Tapered roller bearing	1	
9	LGX030CA.03.04-001	螺旋伞齿轮轴 Spiral gear shaft	1	
10	LGX030CA.03.04-007	挡圈 Snap ring	1	
11	LGX030CA.03.04-005	锁紧螺母 Lock nut	1	
12	GB/T893.1-1986	孔用挡圈24 Snap ring	1	
13	LGX030CA.03.08-008	调整垫片 Adjustment gasket	1组	
14	LGX030CA.03.04-002	压板 Pressure plate	1	



图25/FIG.25

- B D20-3X5
- D D25-3X5
- F D30-3X5
- H D35-3X5
- J D38-3X5

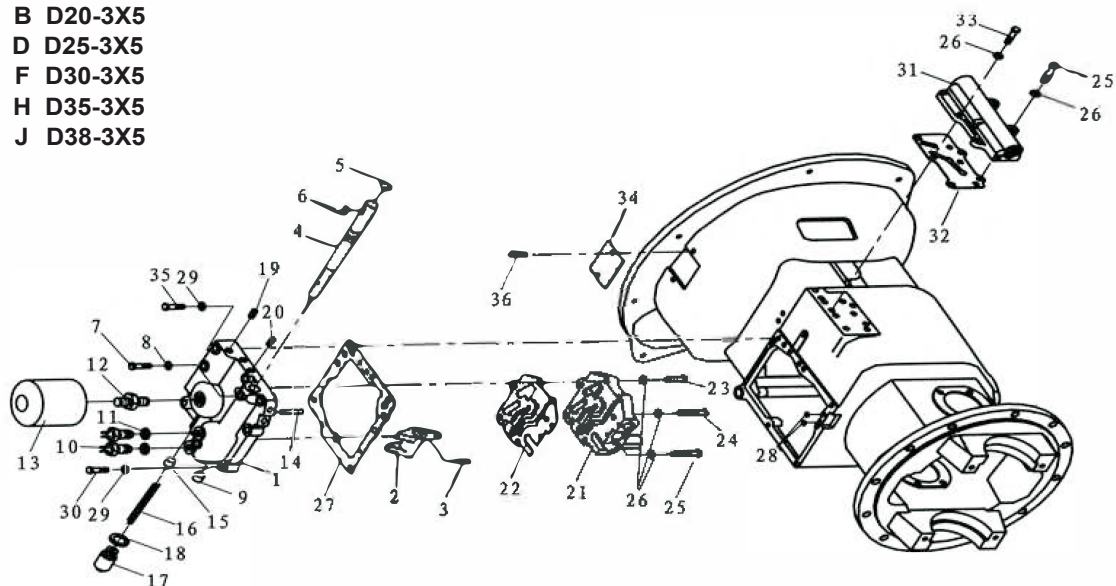


## 变速箱1/Transmission1

序号 Item No	编 码 Code	零部件名称 Description		数量 Q'ty	备 注 Remark
1	Y30H-01010	轴承座螺栓	Bearing seat bolt	4	
2	Y30H-01008	轴承座锁片	Bearing seat split	4	
3	Y30H-01002	轴承座	Bearing seat	2	
4	Y30H-01001-3	液力箱体	Hydraulic case	1	
4	YQX37-01001	液力箱体	Hydraulic case	1	
5	Y30H-01006A	加油管	oil filler pipe	1	
6	Y30H-01007B	加油口盖	Oil filler cap	1	
7	GB1235-76	O形圈15×2.4	O ring 15×2.4	2	
8	Y30H-02000-1	离合器总成	Clutch, Assy.	1	
9	GB276-94	轴承6206	Bearing 6206	1	
10	Y30H-04001	惰轮轴	Idler wheel shaft	1	
11	Y30H-04002	惰轮	Idler wheel	1	
12	GB893.1-86	弹性挡圈24	Snap ring	2	
13	GB276-94	轴承6207	Bearing 6207	2	
14	Y30H-03002	输出齿轮	Input gear	1	
15	GB1235-76	O形圈24×2.4	O ring	1	
16	GB1235-76	O形圈28×2.4	O ring	1	
17	GB/T70.1	螺钉M10×25	Screw	1	
18	GB/T70.1	螺钉M10×30	Screw	4	
19	Y30H-03009	防松螺母	Anti-loose nut	1	
20	Y30H-03006A	液力输出轴垫片	Hydraulic output shaft gasket	AR	t=0.5mm
20	Y30H-03006B	液力输出轴垫片	Hydraulic output shaft gasket	AR	t=0.2mm
20	Y30H-03006C	液力输出轴垫片	Hydraulic output shaft gasket	AR	t=0.1mm
20	Y30H-03006D	液力输出轴垫片	Hydraulic output shaft gasket	AR	t=0.15mm
21	GB297-94	圆锥滚子轴承30208	Tapered roller bearing 30208	1	
22	GB1235-76	O形圈80×3.1	O ring	1	
23	Y30H-03003	油封保持架	Oil seal holder	1	
24	Y30H-03007	油封	Oil seal holder	1	
25	GB297-94	圆锥滚子轴承32208	Tapered roller bearing 32208	1	
26	Y30H-03008	轴环	Ring shaft	1	
27	Y30H-03001	输出轴	Output shaft	1	
28	Y30H-03005A	支承片垫片	Pivot split gasket	AR	t=0.5mm
28	Y30H-03005B	支承片垫片	Pivot split gasket	AR	t=0.2mm
28	Y30H-03005C	支承片垫片	Pivot split gasket	AR	t=0.1mm
29	Y30H-03004	支承片	Pivot split	1	
30	GB93-87	弹簧垫圈	Spring washer	4	



**B D20-3X5**  
**D D25-3X5**  
**F D30-3X5**  
**H D35-3X5**  
**J D38-3X5**

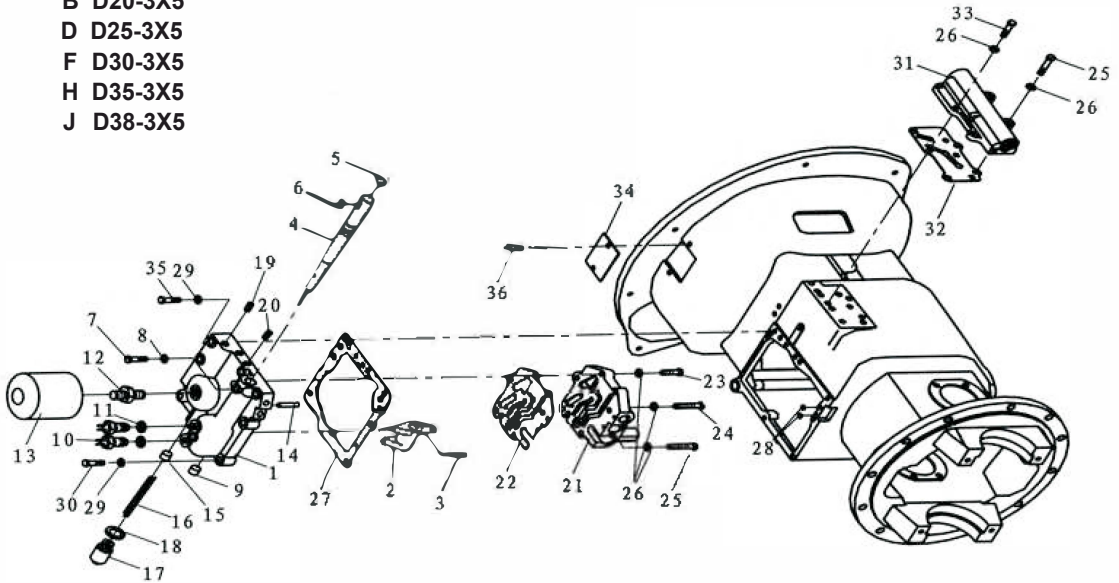


序号 Item No	编 码 Code	零 部 件 名 称 Description	数量 Q'ty	备 注 Remark
19	Q/ZB285.4-77	螺塞ZG1/8"	Plug 4	
20	Q/ZB285.4-77	螺塞ZG1/4"	Plug 6	
21	Y30H-07100	控制阀总成 Control valve assy.	1	
22	Y30H-07016	控制阀衬垫 Control bushing	1	
23	GB5783-86	螺栓M8×35 Bolt M8×35	2	
24	GB5782-86	螺栓M8×55 Bolt M8×55	2	
25	GB5782-86	螺栓M8×50 Bolt M8×50	4	
26	GB93-87	垫圈8 Washer 8	11	
27	Y30H-07015	壳体盖衬垫 Case cover bushing	1	
28	GB1235-76	O形圈9×1.9 O ring 9×1.9	2	
29	GB93-87	垫圈10 Washer 10	8	
30	GB5783-86	螺栓M10×55 Bolt M10×55	2	
31	Y30H-08000	微动阀总成 Inching valve assy.	1	
32	Y30H-08010	微动阀衬垫 Inching valve bushing	1	
33	GB5783-86	螺栓M8×25 Bolt M8×25	3	
34	Y30H-01005	变矩器壳盖 Torque converter case cover	1	
35	GB5783-86	螺栓M10×40 Bolt M10×40	6	
36	GB818-85(A)	螺钉M8×10 Screw M8×10	2	

图26/FIG.26

变速箱2/Transmission2

- B D20-3X5
- D D25-3X5
- F D30-3X5
- H D35-3X5
- J D38-3X5

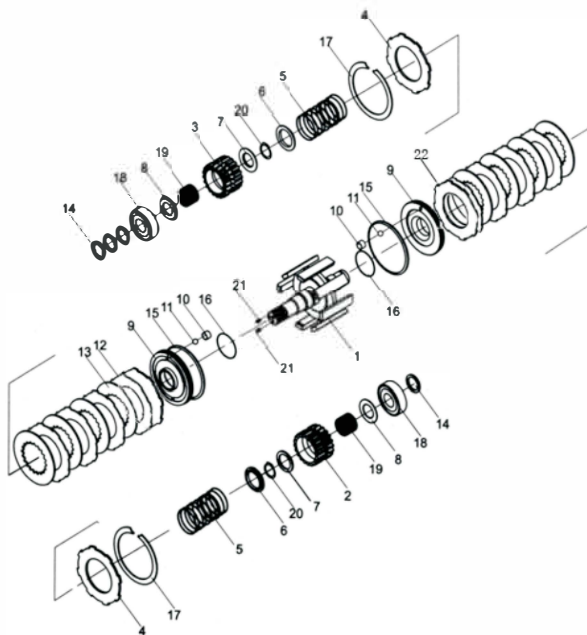


序号 Item No	编 码 Code	零部件名称 Description	数量 Q'ty	备 注 Remark
19	Q/ZB285.4-77	螺塞ZG1/8"	Plug 4	
20	Q/ZB285.4-77	螺塞ZG1/4"	Plug 6	
21	Y30H-07100	控制阀总成	Control valve assy. 1	
22	Y30H-07016	控制阀衬垫	Control bushing 1	
23	GB5783-86	螺栓M8×35	Bolt M8×35 2	
24	GB5782-86	螺栓M8×55	Bolt M8×55 2	
25	GB5782-86	螺栓M8×50	Bolt M8×50 4	
26	GB93-87	垫圈8	Washer 8 11	
27	Y30H-07015	壳体盖衬垫	Case cover bushing 1	
28	GB1235-76	O形圈9×1.9	O ring 9×1.9 2	
29	GB93-87	垫圈10	Washer 10 8	
30	GB5783-86	螺栓M10×55	Bolt M10×55 2	
31	Y30H-08000	微动阀总成	Inching valve assy. 1	
32	Y30H-08010	微动阀衬垫	Inching valve bushing 1	
33	GB5783-86	螺栓M8×25	Bolt M8×25 3	
34	Y30H-01005	变矩器壳盖	Torque converter case cover 1	
35	GB5783-86	螺栓M10×40	Bolt M10×40 6	
36	GB818-85(A)	螺钉M8×10	Screw M8×10 2	

图27/FIG.27

离合器总成/Clutch assy.

B D20-3X5  
 D D25-3X5  
 F D30-3X5  
 H D35-3X5  
 J D38-3X5



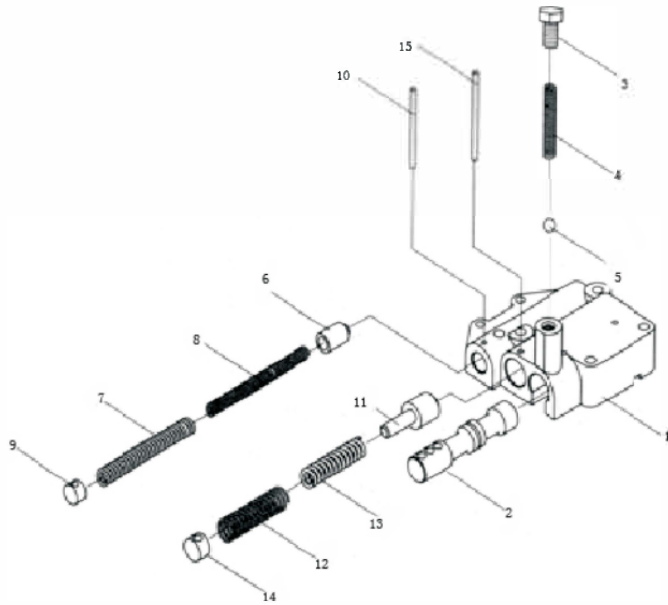
序号 Item No	编 码 Code	零部件名称 Description	数量 Q'ty	备 注 Remark
A	Y30H-02000-1	离合器总成 Clutch, Ass'y	1	
1	Y30H-02100-1	输入轴总成 Shift, input	1	
2	Y30H-02002	倒车档齿轮 Gear, reverse	1	
3	Y30H-02001	前进档齿轮 Gear, forward	1	
4	Y30H-02012	端板 Plate, end	2	
5	Y30H-02003	回程弹簧 Spring, return	2	
6	Y30H-02004	弹簧座 Seat, spring	2	
7	Y30H-02005	止推环A Ring, restrain	2	
8	Y30H-02006	止推环B Ring, restrain	2	
9	Y30H-02201	活塞 Piston	2	
10	Y30H-02202	塞 Plug	2	
11	GB308-89	钢球1/8" Ball, steel	2	
12	Y30H-02008	隔片 Plate, separator	8	
13	Y30H-02007	摩擦片 Plate, friction	8	
14	Y30H-02009	密封环A Ring, seal	4	
15	Y30H-02010	密封环B Ring, seal	2	
16	GB1235-76	O形圈40×3.5 O-ring	2	
17	Y30H-02011A	卡环 Snap, ring	2	



图28/FIG.28

控制阀总成/Control valve assy.

B D20-3X5  
 D D25-3X5  
 F D30-3X5  
 H D35-3X5  
 J D38-3X5

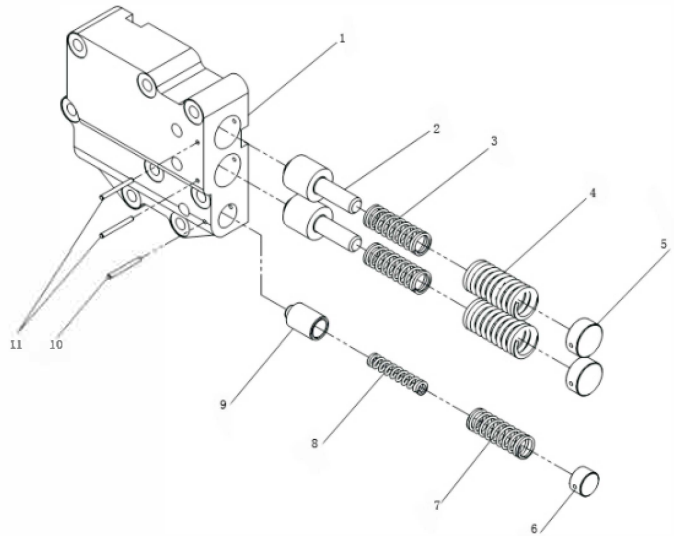


序号 Item No	编 码 Code	零 部 件 名 称 Description	数 量 Q'ty	备 注 Remark
A	Y30H-07100	控制阀 Control valve	1	
1	Y30H-07101	阀体 Valve body	1	
2	Y30H-07102	滑阀 Slide valve	1	
3	Y30H-07103	油塞 Oil plug	1	
4	Y30H-07104	弹簧 Spring	1	
5	GB308-89	钢球13/32" Steel ball 13/32"	1	
6	Y30H-07105	活塞 Piston rod	1	
7	Y30H-07106	弹簧 Spring	1	
8	Y30H-07107	弹簧 Spring	1	
9	Y30H-07108	塞 Plug	1	
10	GB879-86	销4×35 Pin	1	
11	Y30H-07109	阀芯 Valve core	1	
12	Y30H-07110	弹簧 Spring	1	
13	Y30H-07111	弹簧 Spring	1	
14	Y30H-07112	塞 Plug	1	
15	GB879- 86	销4×40 Pin	1	

图28/FIG.28

控制阀/Control valve

B D20-3X5  
 D D25-3X5  
 F D30-3X5  
 H D35-3X5  
 J D38-3X5

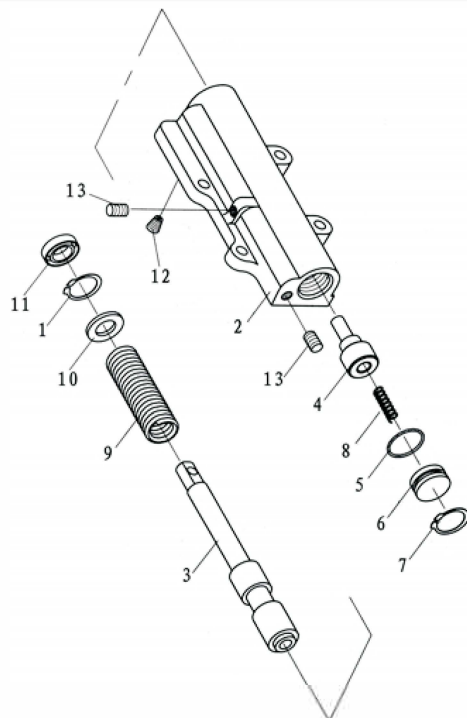


序号 Item No	编 码 Code	零部件名称 Description	数量 Q'ty	备 注 Remark
A	Y30H-D07100	控制阀	Control valve	1
1	Y30H-D07101	阀体	Valve body	1
2	Y30H-07109	滑芯	Slide core	1
3	Y30H-07111	弹簧	Spring	1
4	Y30H-07110	弹簧	Spring	1
5	Y30H-07112	塞	Plug	1
6	Y30H-07108	塞	Plug	1
7	Y30H-07106	弹簧	Spring	1
8	Y30H-07107	弹簧	Spring	1
9	Y30H-07105	活塞	Piston	1
10	GB879-86	销4×35	Pin 4×35	1
11	GB879-86	销4×40	Pin 4×40	1

图29/FIG.29

微动阀/Inching valve assy.

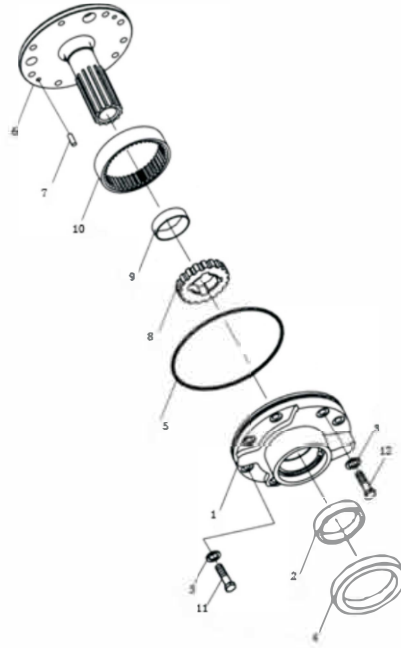
B D20-3X5  
 D D25-3X5  
 F D30-3X5  
 H D35-3X5  
 J D38-3X5



序号 Item No	编 码 Code	零部件名称 Description	数量 Q'ty	备 注 Remark
A	Y30H-08000	微动阀总成 Inching valve	1	
1	GB893.1-86	挡圈30 Snap, ring	1	
2	Y30H-08001	阀体 Body, valve	1	
3	Y30H-08002	阀杆 Spool	1	
4	Y30H-08003	滑阀 Plunger	1	
5	GB1235-76	O形圈28×2.65 O-ring	1	
6	Y30H-08004	油堵 Seal, oil	1	
7	GB893.1-86	挡圈28 Snap, ring	1	
8	Y30H-08006	微动弹簧(II) Spring	1	
9	Y30H-08005	微动弹簧(I) Spring	1	
10	Y30H-08007	堵块 Spacer	1	
11	Y30H-08008	油封30×16×7 Seal, oil	1	
12	Y30H-08009	油塞 Plug, choke	1	
13	JB/ZQ4446	螺塞Rc1/8" Plug	2	

**图30/FIG.30**
**供油泵/Oil pump**

B D20-3X5  
 D D25-3X5  
 F D30-3X5  
 H D35-3X5  
 J D38-3X5

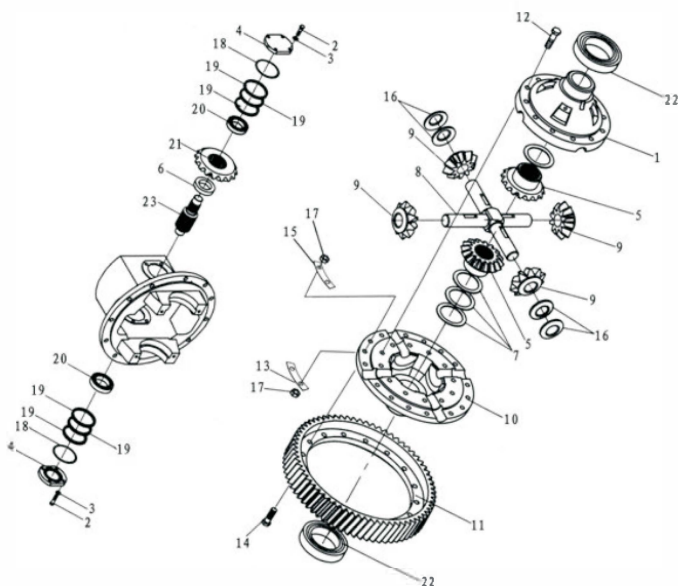


序号 Item No	编 码 Code	零部件名称 Description	数量 Q'ty	备 注 Remark
A	Y30H-05000	供油泵总成 Oil pump Assy.	1	
1	Y30H-05101	泵体 Case, pump	1	
2	Y30H-05102	衬套 Bushing	1	
3	Y30H-07007	螺栓衬垫 Washer	2	
4	Y30H-05004	油封 Seal, oil	1	
5	Y30H-05005	O形密封圈 Snap O-ring	1	
6	Y30H-05001	锭子 Support, starter	1	
7	GB119-86	圆柱销B6×16 Pin,parallel	2	
8	Y30H-05201	主动齿轮 Gear, drive	1	
9	Y30H-05202	衬套 Bushing	1	
10	Y30H-05003	被动齿轮 Gear, driven	1	
11	GB5783-86	螺栓M8×25 Bolt	1	
12	GB5783-86	螺栓M8×35 Bolt	1	

图31/FIG.31

减速传动和差速器部分/  
Reduction gear & Diff. part

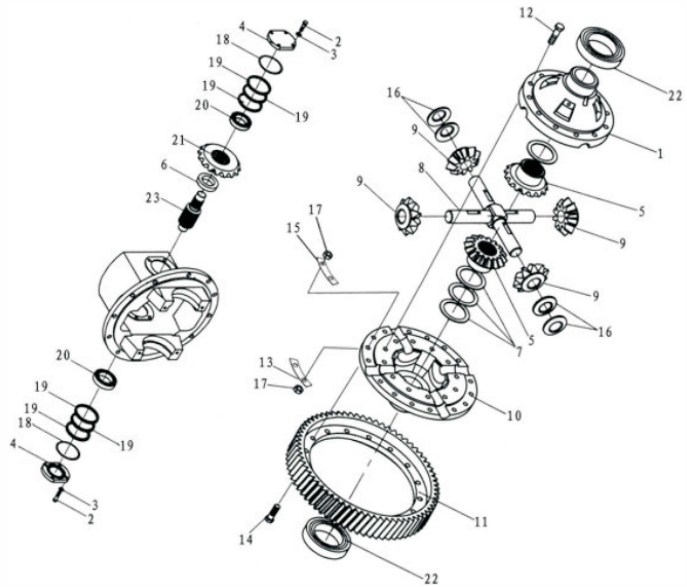
B D20-3X5  
D D25-3X5  
F D30-3X5  
H D35-3X5  
J D38-3X5



序号 Item No	编 码 Code	零 部 件 名 称 Description	数量 Q'ty	备 注 Remark
1	Y30H-10002	左差速器壳 Left diff. case	1	
2	GB5783-86	螺栓M10×25 Bolt M10×25	8	
3	GB93-87	弹簧垫圈10 Spring washer 10	8	
4	Y30H-09001	轴承盖 Bearing cover	2	
5	Y30H-10007	半轴齿轮 Axle shaft gear	2	
5	Y30H-X10007	半轴齿轮 Axle shaft gear	2	
6	Y30H-09004	齿轴衬套 Axle shaft bushing	1	
7	YQX25-10006A	半轴垫圈 Axle shaft washer	2	t=1.8mm
7	YQX25-10006B	半轴垫圈 Axle shaft washer	2	t=2mm
7	YQX25-10006C	半轴垫圈 Axle shaft washer	2	t=2.2mm
7	YQX25-10006D	半轴垫圈 Axle shaft washer	2	t=2.4mm
7	Y30H-10006A	半轴垫圈 Axle shaft washer	2	t=2.5mm
7	Y30H-10006B	半轴垫圈 Axle shaft washer	2	t=2.4mm
7	Y30H-10006C	半轴垫圈 Axle shaft washer	2	t=2.2mm
7	Y30H-10006D	半轴垫圈 Axle shaft washer	2	t=2.8mm
7	Y30H-10006E	半轴垫圈 Axle shaft washer	2	t=2.65mm
8	Y30H-10003	十字轴 Sprider shaft	1	
9	Y30H-10005	行星齿轮 Planetary gear	4	

**图31/FIG.31**
**减速传动和差速器部分/  
Reduction gear & Diff. part**

**B D20-3X5**  
**D D25-3X5**  
**F D30-3X5**  
**H D35-3X5**  
**J D38-3X5**



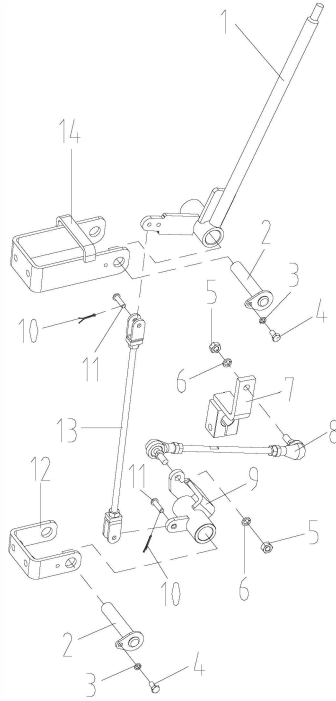
序号 Item No	编 码 Code	零部件名称 Description	数量 Q'ty	备 注 Remark
10	Y30H-10001	右差速器壳 Right diff. gear	1	
11	Y30H-10012	齿圈 Gear ring	1	
12	Y30H-10008A	差壳螺栓 Diff. case bolt	12	
13	Y30H-10011	齿圈锁片 Gear ring lock split	8	
14	Y30H-10010A	齿圈螺栓 Gear ring Bolt	16	
15	Y30H-10009	差壳锁片 Diff. case lock split	6	
16	Y30H-10004	行星垫圈 Plantary washer	4	
17	GB6171-86	螺母M10×1.25 Nut M10×1.25	28	
18	GB1235-76	O形圈75×3.1 O ring 75×3.1	2	
19	Y30H-09002A	齿轴垫片 Gear shaft gasket	AR	t=0.5mm
19	Y30H-09002B	齿轴垫片 Gear shaft gasket	AR	t=0.2mm
19	Y30H-09002C	齿轴垫片 Gear shaft gasket	AR	t=0.1mm
19	Y30H-09002D	齿轴垫片 Gear shaft gasket	AR	t=0.15mm
20	GB297-94	圆锥滚子轴承32207 Tapered roller bearing 32207	2	
21	YQX18-09005	螺旋伞齿轮 Twisted bevel gear	1	
21	YQX25-09005	螺旋伞齿轮 Twisted bevel gear	1	
21	Y30H-09005	螺旋伞齿轮 Twisted bevel gear	1	
22	GB276-94	深沟球轴承6213 Deep groove ball bearing	2	



图32/FIG.32

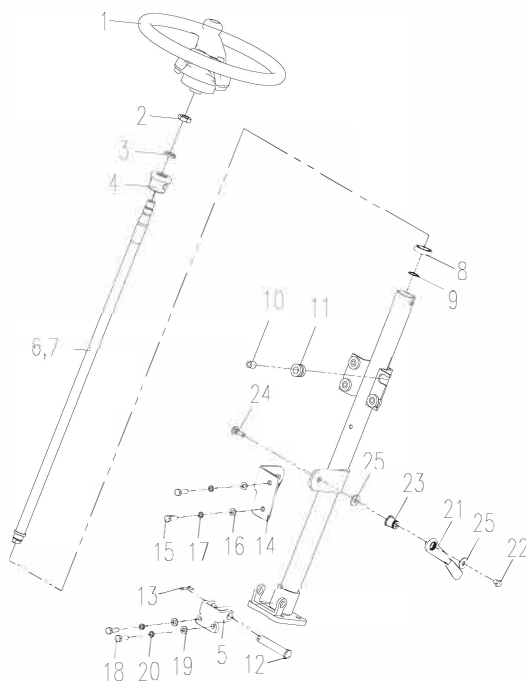
变速操纵总成/  
Speed control assy.

B D20-3X5  
D D25-3X5  
F D30-3X5  
H D35-3X5  
J D38-3X5



序号 Item No	编 码 Code	零部件名称 Description	数量 Q'ty	备 注 Remark
1	E2200A1C4	操纵杆焊合 Control lever weldment	1	
2	E2200A1CA	销轴焊合 Pin shaft weldment	2	
3	BF7BE3D2B	垫圈6 Washer 6	2	
4	BEC0044AE	螺栓M6×12 Bolt M6×12	2	
5	BF222B457	螺母M8 Nut M8	2	
6	BF7BE643B	垫圈8 Washer 8	2	
7	E2200A1D5	摇臂焊合 Rock arm assembly	1	
8	6FC4289F5	连杆总成 Linkage assembly	1	
9	E2200A1D2	摇臂焊合 Rock arm assembly	1	
10	BFE5BAD11	销2×25 Pin 2×25	2	
11	BFE3CD946	销B6×22 Pin B6×22	2	
12	E2200A1D6	支架焊合 Bracket weldment	1	
13	E2200A1CE	连杆总成 Linkage assembly	1	
14	E2200A1CD	支架焊合 Bracket weldment	1	

- A D20M-3X5
- B D20-3X5
- C D25M-3X5
- D D25-3X5
- E D30M-3X5
- F D30-3X5
- G D35M-3X5
- H D35-3X5
- I D38M-3X5
- J D38-3X5



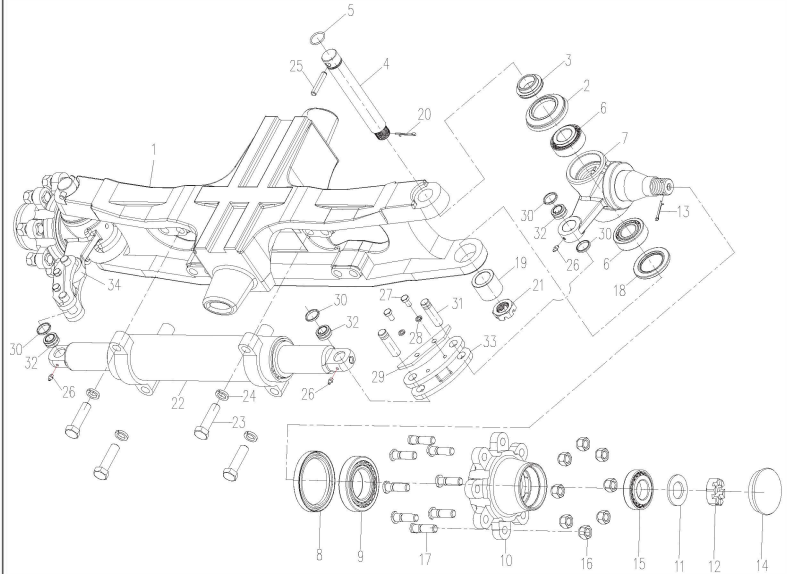
序号 Item No	编 码 Code	零 部 件 名 称 Description	数量 Q'ty	备 注 Remark
1	E0A291D4C	方向盘总成(直径Φ300)      Steering gear	1	
2A	E0A292066	转向管柱总成      Steering column assy.	1	含2-13项
2	BF26EFECF	螺母M16×1.5      Nut M16×1.5	1	
3	BF8F02D83	垫圈16      Washer 16	1	
4	E2200A254	胶套总成      Rubber sheath assy.	1	
5	E2200A24D	支架      Bracket	1	
6	E0A292067	转向管柱焊合      Steering column weldment	1	
7	E0A292068	转向轴      Steering shaft	1	
8	C271FC741	轴承61904-Z      Bearing 61904-z	1	
9	BFAD986EB	挡圈20      Snap ring 20	1	
10	E2200A25B	套管      Thimble	4	
11	E2200A25C	橡胶圈      Rubber ring	4	
12	E2200A25D	销轴      Pin shaft	1	
13	BFE5BFBFD	销3.2×32      Pin	1	
14	E2200A97C	支架焊合      Bracket weldment	1	
15	BEC006C86	螺栓M8×20      Bolt M8×20	2	
16	BF8EF9143	垫圈8      Washer 8	2	
17	BF7BE643B	垫圈8      Washer 8	2	





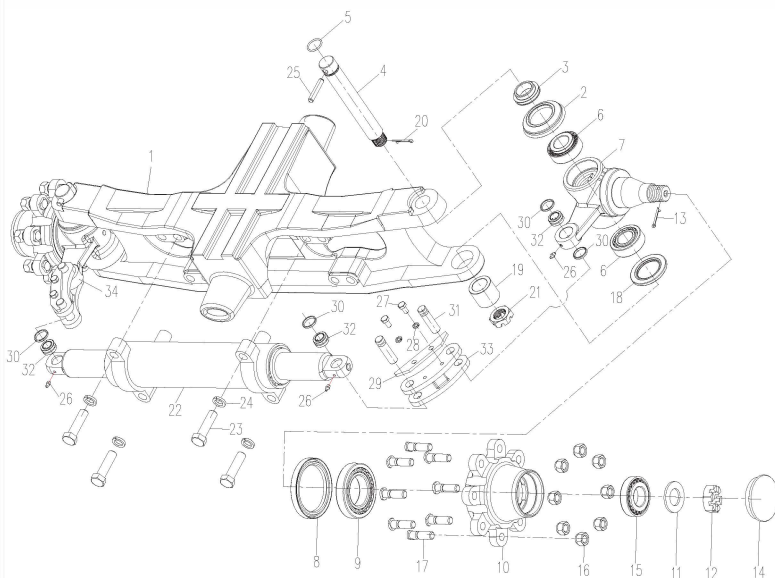
**图35/FIG.35**
**转向桥/Steering axle**

- A D20M-3X5
- B D20-3X5
- C D25M-3X5
- D D25-3X5
- E D30M-3X5
- F D30-3X5
- G D35M-3X5
- H D35-3X5
- I D38M-3X5
- J D38-3X5



序号 Item No	编 码 Code	零部件名称 Description	数量 Q'ty	备 注 Remark
1A	ZZ3050LD-0000A	转向桥 Steering axle		
1	ZZ3050LD-1100A	桥体总成 Steering axle body	1	
2	ZZ3050LD-1004	上防尘圈 Dust ring	2	
3	ZZ3050LD-1003	上支撑套 Support sheath	2	
4	ZZ3050LD-1001	主销 Main pin	2	
5	GB/T1235-1976	O型圈(外径*截面) $\phi 30*\phi 2.5$ O ring	2	
6	GB/T297-1994	圆锥滚子轴承33206 Bearing, taper roller	4	
7	ZZ3050LD-3002	右转向节 Steering knuckle pin	1	
8	Z6301-08534	橡胶油封85*110*12 Rubber oil seal	2	
9	GB/T297-1994	圆锥滚子轴承30211E Bearing, taper roller	2	
10	A21B4-32241	轮毂 Wheel hub	2	
11	GB/T971-1985	垫圈30 Washer 30	2	
12	A21B4-32311	槽型螺母M30*2 Nut M30*2	2	
13	GB/T92-1986	开口销6.3*55 Cotter pin	2	
14	A21B4-32231	轮毂盖 Hub cover	2	
15	GB/T297-1994	圆锥滚子轴承30207 Bearing, taper roller	2	
16	23654-34051	轮毂螺母 Hub nut	16	
17	23654-32041	轮毂螺栓 Hub bolt	16	

- A D20M-3X5
- B D20-3X5
- C D25M-3X5
- D D25-3X5
- E D30M-3X5
- F D30-3X5
- G D35M-3X5
- H D35-3X5
- I D38M-3X5
- J D38-3X5



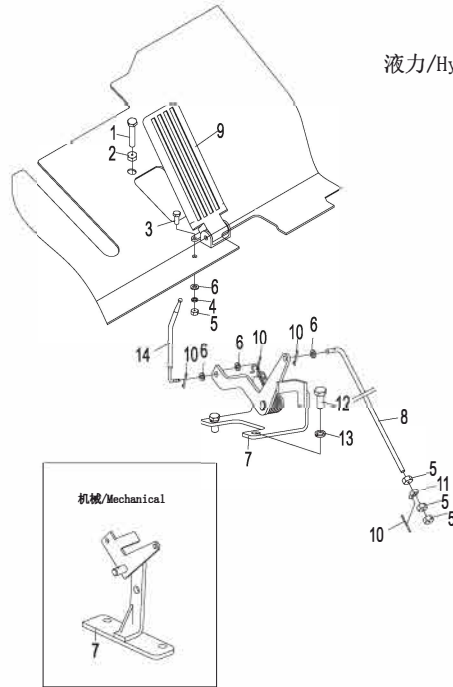
序号 Item No	编 码 Code	零 部 件 名 称 Description	数量 Q'ty	备 注 Remark
18	ZZ3050LD-1005	铁壳油封	Oil seal	2
19	ZZ3050LD-1002	下支撑套	Support sheath	2
20	GB/T92-1986	开口销3.2*45	Cotter pin 3.2×45	2
21	ZZ3050LD-1007	槽型螺母M24*1.5	Nut M24×1.5	2
22	ZZ3050LD-2000 (ZL)	油缸	Cylinder	1
23	GB5783-2000	六角螺栓M16*60	Bolt M16×60	4
24	GB/T93-1987	弹簧垫圈16	Washer 16	4
25	ZZ3050LD-1006	直销 φ9.5*56	Pin	2
26	JB/T7940.0-1995	直通式压注油杯M6	Oil cup M6	4
27	GB/T5781-2000	螺栓M8*16	Bolt M8×16	4
28	GB/T93-87	弹簧垫圈8	Washer 8	4
29	A21B4-32300	挡板	Baffle	2
30	H24C4-12003	衬套	Shaft sleeve	4
31	A21B4-32261A	连杆销	Link pin	4
32	H24C4-32061	关节轴承GE16ES	Joint bearing	4
33	A21B4-32081A	连杆	Connecting rod	2
34	ZZ3050LD-3001	左转向节	Steering knuckle pin	1

图36/FIG.36

油门操纵总成/  
Throttle control assy.

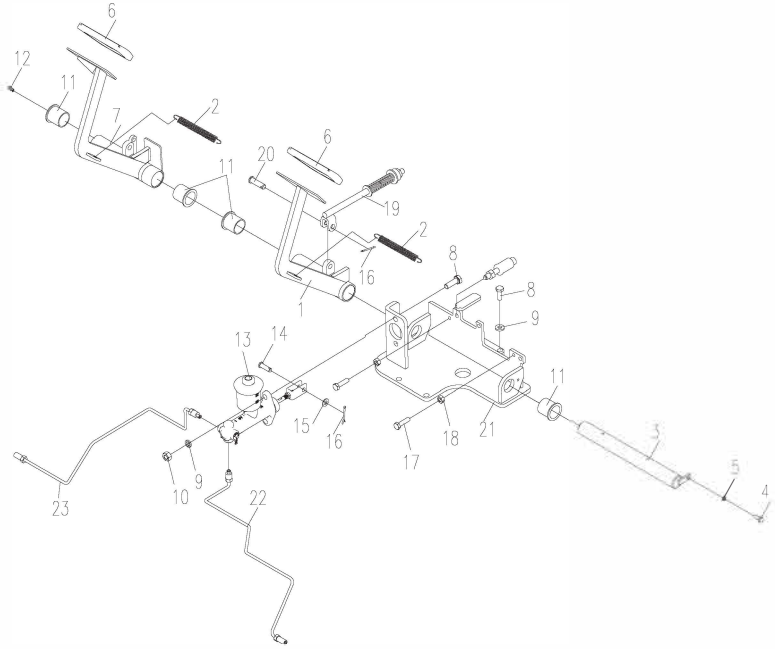
- A D20M-3X5
- B D20-3X5
- C D25M-3X5
- D D25-3X5
- E D30M-3X5
- F D30-3X5
- G D35M-3X5
- H D35-3X5
- I D38M-3X5
- J D38-3X5

液力/Hydraulic



序号 Item No	编 码 Code	零部件名称 Description	数量 Q'ty	备 注 Remark	
1	BEC0070D2	螺栓M8×70	Bolt M8×70	1	
2	BF222B457	螺母M8	Nut M8	1	
3	BEC004512	螺栓M6×16	Bolt M6×16	4	
4	BF7BE3D2B	垫圈6	Washer 6	2	
5	BF222B3F3	螺母M6	Nut M6	5	
6	BF8EF6A33	垫圈6	Washer 6	5	BDFHJ
	BF8EF6A33	垫圈6	Washer 6	3	ACEGI
7	E2DEC4A16	油门支架总成	Throttle bracket assembly	1	BDFHJ
	E27F660EF	油门支架总成	Throttle bracket assembly	1	ACEGI
8	E22007F45	杆	Rod	1	
9	E27F660F8	踏板总成	Pedal assembly	1	
10	BFE5BAC49	销2×20	Pin 2×20	4	
11	6FC62D971	耳子	Ear ring	1	
12	BEC0093FA	螺栓M10×25	Bolt M10×25	2	
13	BF7BE8B4B	垫圈10	Washer 10	2	
14	E27F660F9	杆	Rod	1	

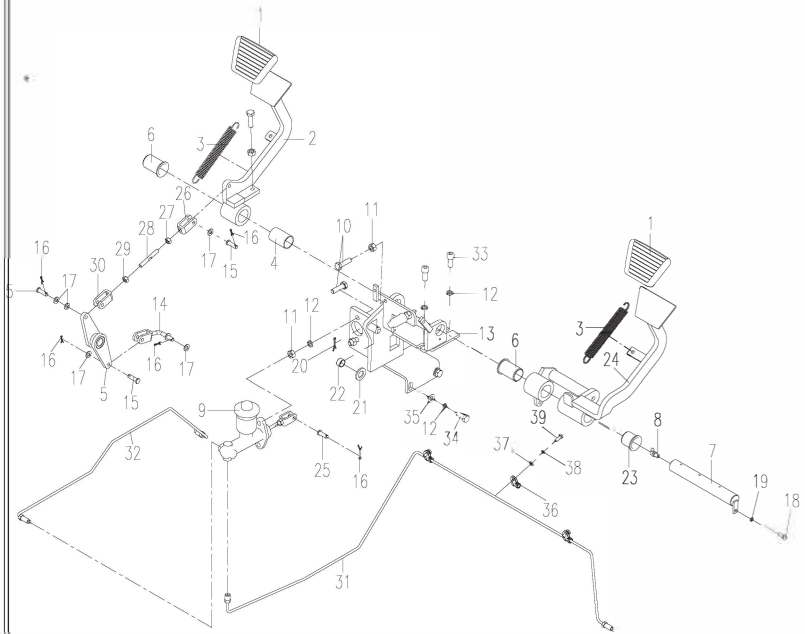
**A D20M-3X5**  
**C D25M-3X5**  
**E D30M-3X5**  
**G D35M-3X5**  
**I D38M-3X5**



序号 Item No	编 码 Code	零 部 件 名 称 Description	数量 Q'ty	备 注 Remark
1A	E04333BF1	行车制动总成 Service Brake assy.	1	含1-21项
1	E2200A1A6	转轴焊合 Rotary weldment	1	总成带
2	E2200A1FF	弹簧 Spring	2	总成带
3	E2200A1AC	销轴焊合 Pin shaft weldment	1	总成带
4	BEC004512	螺栓M6×16 Bolt	1	总成带
5	BF7BE3D2B	垫圈6 Washer	1	总成带
6	E2200A1FE	踏板垫 Pedal gasket	2	总成带
7	E2200A1AF	转轴焊合 Rotary weldment	1	总成带
8	BEC00945E	螺栓M10×30 Bolt	6	总成带2
9	BF7BE8B4B	垫圈10 Washer	6	总成带2
10	BF222B4BB	螺母M10 Nut	2	总成带
11	E2200A203	轴套 Shaft sleeve	4	总成带
12	D15F5B925	油杯90° M6 Oil cup	1	总成带
13	E2200A4B1	制动总泵总成 Brake wheel pump assy.	1	总成带
14	BFE4C435E	销B8×26 Pin	1	总成带
15	BF8EF9143	垫圈8 Washer	1	总成带
16	BFE5BD4ED	销2.5×32 Pin	2	总成带
17	BEC006D4E	螺栓M8×30 Bolt	2	总成带



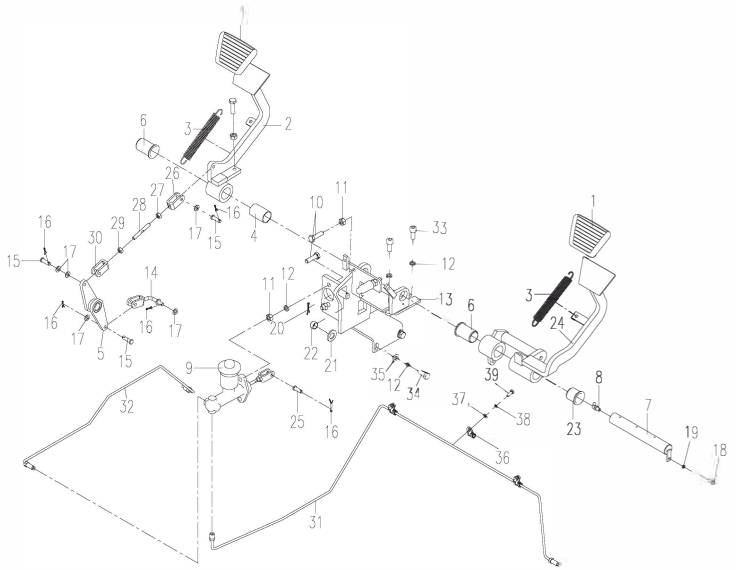
**A D20M-3X5**  
**C D25M-3X5**  
**E D30M-3X5**  
**G D35M-3X5**  
**I D38M-3X5**



序号 Item No	编 码 Code	零 部 件 名 称 Description	数量 Q'ty	备 注 Remark
1A	E04333BF0	行车制动总成 Service brake assy.	1	含1-25项
1	E2200A1FE	踏板垫 Pedal gasket	2	总成带
2	E2200A1D8	转轴焊合 Rotary shaft weldment	1	总成带
3	E2200A1FF	弹簧 Spring	2	总成带
4	E2200A200	轴套 Shaft sleeve	1	总成带
5	E2200A1DF	转轴焊合 Rotary shaft weldment	1	总成带
6	E2200A201	轴套 Shaft sleeve	2	总成带
7	E2200A1FB	销轴焊合 Pin shaft weldment	1	总成带
8	D15F5B989	油杯90° M8×1 Oil cup	1	总成带
9	E1614BD55	制动总泵总成 Brake wheel assy.	1	总成带
10	BEC0094C2	螺栓M10×35 Bolt M10×35	4	总成带
11	BF222B4BB	螺母M10 Nut M10	4	总成带
12	BF7BE8B4B	垫圈10 Washer 10	6	总成带
13	E2200A1E0	支架焊合 Brake weldment	1	总成带
14	E2200A1EA	连接叉焊合 Connect fork weldment	1	总成带
15	BFE2DC00A	销B8×30 Pin	3	总成带
16	BFE5BF77D	销3.2×26 Pin	5	总成带
17	BF8EF9143	垫圈8 Washer 8	5	总成带

图38/FIG. 38

A D20M-3X5  
C D25M-3X5  
E D30M-3X5  
G D35M-3X5  
I D38M-3X5



序号 Item No	编 码 Code	零部件名称 Description	数量 Q'ty	备 注 Remark
18	BEC004512	螺栓M6×16	Bolt M6×16	1 总成带
19	BF7BE3D2B	垫圈6	Washer 6	1 总成带
20	BFE5C2435	销4×45	Pin	1 总成带
21	BF8F02D88	垫圈16	Washer 16	1 总成带
22	C1C18E37D	滑动轴承16×18×20	Slide bearing	1 总成带
23	E2200A203	轴套	Shaft sleeve	1 总成带
24	E2200A1ED	转轴焊合	Rotary weldment	1 总成带
25	BFE4C42FA	销8×24	Pin	1 总成带
26A	E2200A1F7	拉杆总成	Pull rod	1 含26-30项
26	E2200A1F8	连接叉	Connecting fork	1 总成带
27	BF222B457	螺母M8	Nut M8	1
28	E2200A1F9	拉杆	Pull rod	1 总成带
29	BF222BCEF	螺母M8-LH	Nut	1
30	E2200A1FA	连接叉	Connecting fork	1 总成带
31	E2200B0E7	钢管总成	Steel tube assy.	1 BD
	E2200A204	钢管总成	Steel tube assy.	1 FHJ
32	E2200B0E8	钢管总成	Steel tube assy.	1 BD
	E2200A207	钢管总成	Steel tube assy.	1 FHJ

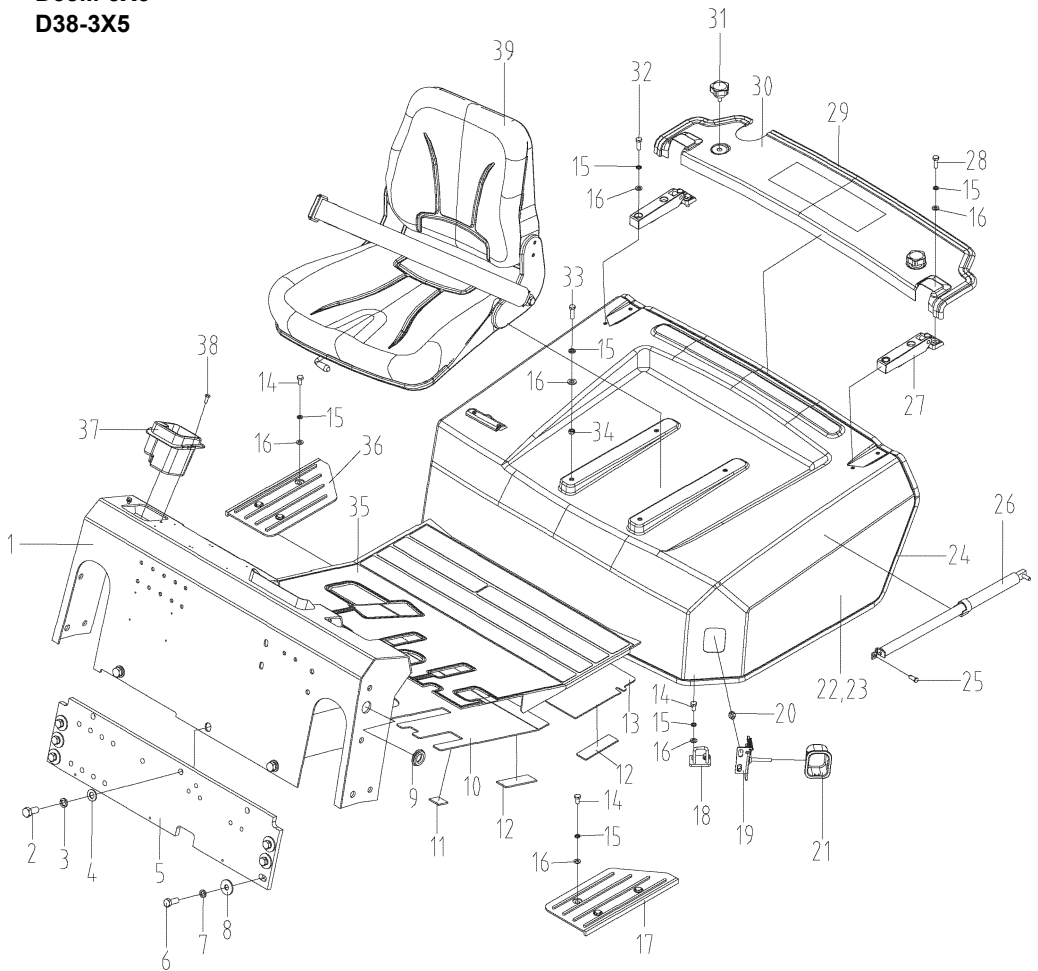






图41/FIG.41

- A D20M-3X5
- B D20-3X5
- C D25M-3X5      国IV机型/Domestic IV model
- D D25-3X5
- E D30M-3X5
- F D30-3X5
- G D35M-3X5
- H D35-3X5
- I D38M-3X5
- J D38-3X5

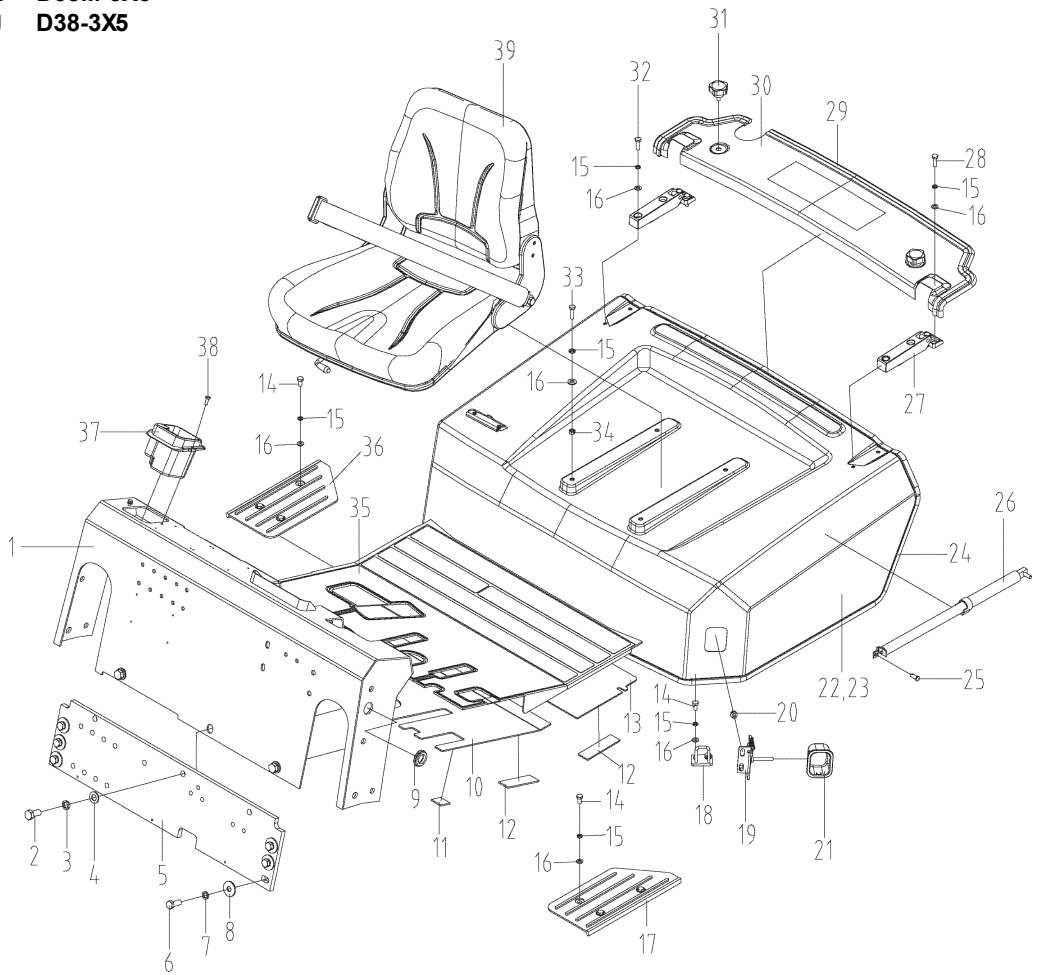


## 覆盖件系统/Outer panel system

序号 Item No	编 码 Code	零 部 件 名 称 Description	数量 Q'ty	备 注 Remark
1	6FCAD324	仪表架焊合 Instrument carrier weldment	1	
	6FCAD30B	仪表架焊合 Instrument carrier weldment	1	
2	BEC00E27E	螺栓M14×30 Bolt M14×30	3	
3	BF7BED96B	垫圈14 Washer 14	3	
4	BF8F00673	垫圈14 Washer 14	3	
5	6FCADB738	前横板焊合 Front transverse plate weldment	1	
6	BF7BEB25B	垫圈12 Washer 12	6	
7	BF8EFDF63	垫圈12 Washer 12	6	
8	BEC00BB6E	螺栓M12×30 Bolt M12×30	6	
9	E2200A226	过线圈 Rubber ring	2	
10A	6FCADA539	底板总成 Bottom plate assy.	1	机械/含10-12项
	6FCADA536	底板总成 Bottom plate assy.	1	液力/含10-12项
10	6FCADA53A	底板焊合 Bottom plate weldment	1	机械
	6FCADA537	底板焊合 Bottom plate weldment	1	液力
11	E2200A23E	缓冲垫 Damping cushion	5	
12	E2200A23D	缓冲垫 Damping cushion	4	
13A	6FCADA543	底板总成 Bottom plate assy.	1	含12-13项
13	6FCADA544	底板焊合 Bottom plate weldment	1	
14	BEC006C22	螺栓M8×16 Bolt M8×16	8	
15	BF7BE643B	垫圈8 Washer 8	20	
16	BF8EF9143	垫圈8 Washer 8	20	
17	E2200AF78	踏板 Pedal	1	机械
	E2200A243	踏板 Pedal	1	液力
18	E2200A978	支架焊合 Bracket weldment	1	
19A	E2200AD40	机罩总成 Engine hood assy.	1	机械/含19-24项
	6FCADB404	机罩总成 Engine hood assy.	1	液力
19	E2200A234	锁扣总成 Lock assembly	1	
20	BEBEFC6C8	组合螺栓M8×16 Combination bolt M8×16	2	
21	E2200A23A	塑料方盒 Square box	1	
22	E2200AD41	机罩焊合 Engine hood weldment	1	机械
	E2200A227	机罩焊合 Engine hood weldment	1	液力
23	E2200AD42	隔音隔热棉总成 Sound and heat insulation sponge assy.	1	机械
	E2200A23B	隔音隔热棉总成 Sound and heat insulation sponge assy.	1	液力
24	E1C0AC3FE	密封减震条 Seal stripe	1	机械
	6FCAF6E23	密封条 Seal stripe	1	液力
25	BFE5BFA05	销3.2×18 Pin 3.2×18	1	



- A D20M-3X5
  - B D20-3X5
  - C D25M-3X5
  - D D25-3X5
  - E D30M-3X5
  - F D30-3X5
  - G D35M-3X5
  - H D35-3X5
  - 1 D38M-3X5
  - J D38-3X5
- 国 II 机型/Domestic II model



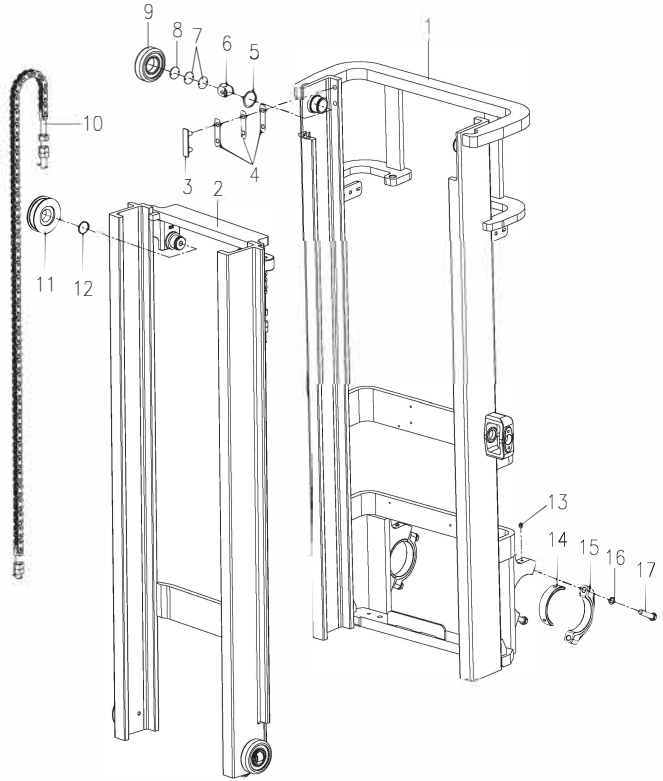
## 覆盖件系统/Outer panel system

序号 Item No	编 码 Code	零部件名称 Description	数量 Q'ty	备 注 Remark
1	6FCADE324	仪表架焊接 Instrument carrier weldment	1	机械
	6FCADE30B	仪表架焊接 Instrument carrier weldment	1	液力
2	BEC00E27E	螺栓M14×30 Bolt M14×30	3	
3	BF7BED96B	垫圈14 Washer 14	3	
4	BF8F00673	垫圈14 Washer 14	3	
5	6FCADB738	前横板焊接 Front transverse plate weldment	1	
6	BF7BEB25B	垫圈12 Washer 12	6	
7	BF8EFDF63	垫圈12 Washer 12	6	
8	BEC00BB6E	螺栓M12×30 Bolt M12×30	6	
9	E2200A226	过线圈 Rubber ring	2	
10A	6FCADA581	底板焊接 Bottom plate assy.	1	含10-11项
10	6FCAEE584	底板 Bottom plate assy.	1	机械
11	6FCAEC914	矩形板 Bottom plate weldment	2	液力
12	E2200A23D	缓冲垫 Bottom plate weldment	2	
13A	6FCADA581	底板焊接 Damping cushion	1	含12-13项
13	6FCADA544	底板焊接 Damping cushion	1	
14	BEC006C22	螺栓M8×16 Bottom plate assy.	8	
15	BF7BE643B	垫圈8 Bottom plate weldment	20	
16	BF8EF9143	垫圈8 Bolt M8×16	20	
17	E2200AF78	踏板 Washer 8	1	
	E2200A243	踏板 Washer 8	1	
18	E2200A978	支架焊接 Pedal	1	机械
19A	E2200AD40	机罩总成 Pedal	1	液力
	6FCADB404	机罩总成 Bracket weldment	1	机械/含19-24项
19	E2200A234	锁扣总成 Engine hood assy.	1	液力
20	BEBEFC6C8	组合螺栓M8×16 Engine hood assy.	2	
21	E2200A23A	塑料方盒 Lock assembly	1	
22	E2200AD41	机罩焊接 Combination bolt M8×16	1	机械
	E2200A227	机罩焊接 Square box	1	液力
23	E2200AD42	隔音隔热棉总成 Engine hood weldment	1	机械
	E2200A23B	隔音隔热棉总成 Engine hood weldment	1	液力
24	E1C0AC3FE	密封减震条 Sound and heat insulation sponge assy.	1	机械
	6FCAF6E23	密封条 Sound and heat insulation sponge assy.	1	液力
25	BFE5BFA05	销3.2×18 Seal sripe	1	
26	E2200A2B1	气弹簧 Seal sripe	1	
27	E220FE8EC	铰链 Pin 3.2×18	2	



**图43/FIG.43**
**门架(基本型) / Mast (normal mast)**

- A D20M-3X5
- B D20-3X5
- C D25M-3X5
- D D25-3X5
- E D30M-3X5
- F D30-3X5
- G D35M-3X5
- H D35-3X5
- I D38M-3X5
- J D38-3X5



序号 Item No	编 码 Code	零部件名称 Description	数量 Q'ty	备 注 Remark
1	701082ED1	外门架焊合	4	ABCD
	701082C7E	外门架焊合	2	EF
	701082C8C	外门架焊合	2	GHIJ
2	7010825C3	内门架焊合	2	ABCD
	70108222C	内门架焊合	2	EF
	70108223A	内门架焊合	4	GHIJ
3	70109B78C	滑块	4	
4	701094130	调整垫	4	
	701094135	调整垫	4	
	701094136	调整垫	1	
5	BFADCE24B	挡圈55	1	
6	E2DEC7AB9	侧滚轮	1	
7	E22008B36	调整垫	1	
	E22008B90	调整垫	4	
8	E22008B37	橡胶垫	4	
9	701090B50	滚轮 $\Phi 119.6$	4	





## 门架参数表(基本型) / Mast (normal mast)

3T

编 码 Code	起升高度 Lifting H	内门架 Inner mast	外门架 Outer mast	链条编码 Code,chain	链条节数 Chain,leaf	备 注 Remark
70114C840	2000	7010825D1	701082F8D	E1C0AC1EF	57	
70114C805	2500	70108222A	701082C7C	E1C0AC1F2	67	
70114C806	2700	70108222B	701082C7D	E1C0AC1F3	71	标准
70114C807	3000	70108222C	701082C7E	E1C0AC1F4	77	
70114C808	3300	70108222D	701082C7F	E1C0AC1F5	83	
70114C809	3500	70108222E	701082C80	E2200A285	87	
70114C80A	3600	70108222F	701082C81	E1C0AC1F6	91	
70114C80B	4000	701082230	701082C82	E2200A287	99	
70114C80C	4300	701082231	701082C83	E2200A288	103	
70114C80D	4500	701082232	701082C84	E2200A289	109	
70114C80E	4800	701082233	701082C85	E1C0AC264	113	
70114C80F	5000	701082234	701082C86	E2200A28B	117	
70114C810	5500	701082235	701082C87	E2200A28D	129	
70114C811	6000	701082236	701082C88	E2200A28D	139	

## 门架参数表(基本型) / Mast (normal mast)

3.5T

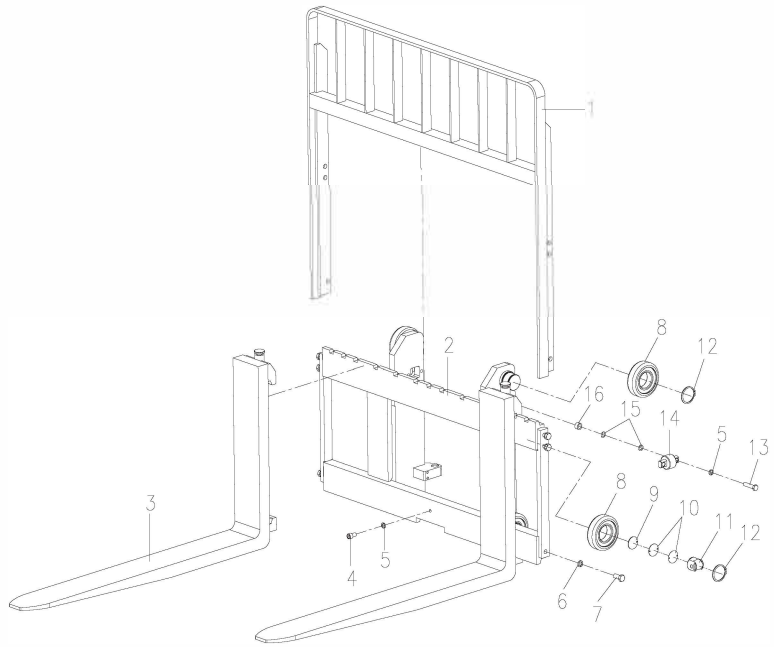
编 码 Code	起升高度 Lifting H	内门架 Inner mast	外门架 Outer mast	链条编码 Code,chain	链条节数 Chain,leaf	备 注 Remark
70114C841	2000	701082F8E	701082F8D	E1C0AC1E4	61	
70114C812	2500	701082C4E	701082C7C	E1C0AC0BD	71	
70114C813	2700	701082C8B	701082C7D	E1C0AC0BE	75	标准
70114C814	3000	701082C8C	701082C7E	E1C0AC0BF	81	
70114C815	3300	701082C8D	701082C7F	E1C0AC0C0	87	
70114C816	3500	701082C8E	701082C80	E1C0AC0C1	91	
70114C817	3600	701082C8F	701082C81	E1C0AC0C2	95	
70114C818	4000	701082C90	701082C82	E1C0AC0C3	103	
70114C819	4300	701082C91	701082C83	E1C0AC0C4	107	
70114C81A	4500	701082C92	701082C84	E1C0AC265	113	
70114C81B	4800	701082C93	701082C85	E1C0AC0C6	117	
70114C81C	5000	701082C94	701082C86	E1C0AC0C7	123	
70114C81D	5500	701082C95	701082C87	E1C0AC0C8	135	
70114C81E	6000	701082C96	701082C88	E1C0AC0C9	145	



图44/FIG.44

货叉及货叉架(基本型)/  
Fork & fork carrier (normal)

- A D20M-3X5
- B D20-3X5
- C D25M-3X5
- D D25-3X5
- E D30M-3X5
- F D30-3X5
- G D35M-3X5
- H D35-3X5
- I D38M-3X5
- J D38-3X5



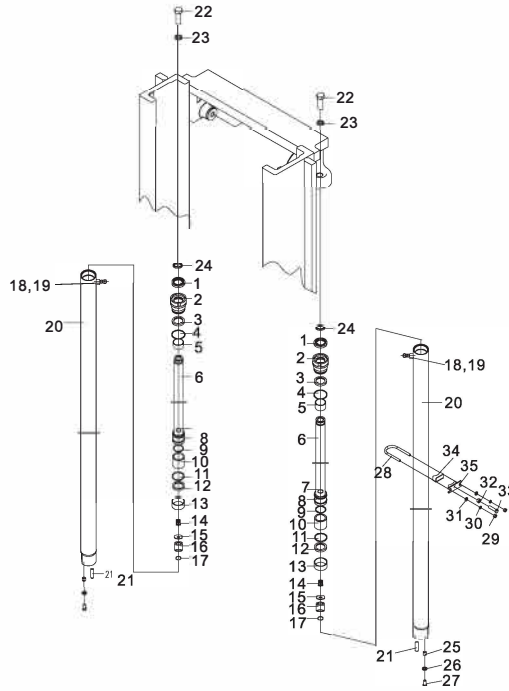
序号 Item No	编 码 Code	零 部 件 名 称 Description	数量 Q'ty	备 注 Remark
1	701082B18	挡货架焊合	Load backrest weldment	1 ABCDEF
	701082B21	挡货架焊合(宽1100)	Load backrest weldment	1 GHIJ
2	701081D97	货叉架焊合(宽1040)	Fork carrier weldment	1 ABCD
	7010820A2	货叉架焊合(宽1100)	Fork carrier weldment	1 EF
	7010820B3	货叉架焊合(宽1100)	Fork carrier weldment	1 GHIJ
3	7010821B1	货叉总成	Fork assembly	2 ABCD
	7010821B8	货叉总成	Fork assembly	2 EF
	7010821C0	货叉总成	Fork assembly	2 GHIJ
4	BE822B999	螺钉M12×20	Screw M12×20	1
5	BF7BEB25B	垫圈12	Washer 12	5 1.0mm
6	BEC2EA93E	螺栓M14×1.5×30	Bolt M14×1.5×30	6 0.5mm
7	BF7BED96B	垫圈14	Washer 14	6
8	701090B50	滚轮Φ119.6	Roller Φ119.6	6
9	E22008B37	橡胶垫	Rubber gasket	4
10	E22008B36	调整垫	Adjustment gasket	4
	E22008B90	调整垫	Adjustment gasket	4
11	E2DEC7AB9	侧滚轮	Side Roller	4



图45/FIG.45

起升油缸(基本型) /  
Lift cylinder (normal mast)

- A D20M-3X5
- B D20-3X5
- C D25M-3X5
- D D25-3X5

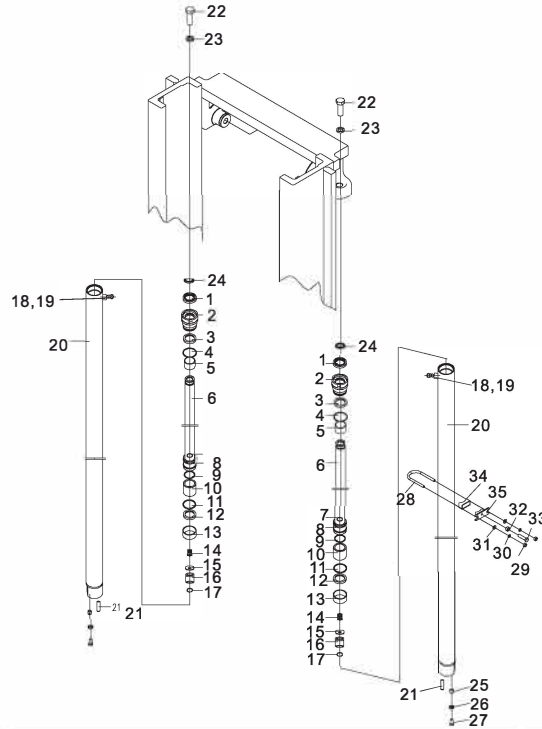


序号 Item No	编 码 Code	零部件名称 Description	数量 Q'ty	备 注 Remark
A	3DD760404	2.5起升油缸 Lift cylinder	2	
1	E39D803C2	防尘圈40×52×7 Wipers	2	
2	8858827F4	导向套 Guide sleeve	2	
3	D15019719	轴用密封圈40×50×7 IDI-ring d40	2	
4	D3F818217	O形圈50.47×2.62 O-ring	2	
5	C393E6DC9	钢背轴承40×44×30 Bushing	2	
6	885952922	活塞杆 Rod	2	
7	885880134	活塞 Piston	2	
8	BFB9DE8CB	挡圈30 Snap ring 30	2	
9	D1281E690	O形圈40×1.8 O-ring	2	
10	88588C362	间隔套 Spacer	2	
11	D154E1A35	挡圈40×50×3 Ring	2	
12	D153EAC35	活塞密封圈50×40×7 U-ring D50	2	
13	D15B8B859	支承环50×45×9.7 Wearing	2	
14	88593BCB8	阀总成 Check valve body	2	
15	BF8F00673	垫圈14 Snap ring 14	2	
16	8858898A6	缓冲套 Cushion collar	2	
17	BFB9DE8CB	挡圈30 Snap ring 30	2	

图45/FIG.45

起升油缸(基本型) /  
Lift cylinder (normal mast)

- A D20M-3X5  
B D20-3X5  
C D25M-3X5  
D D25-3X5

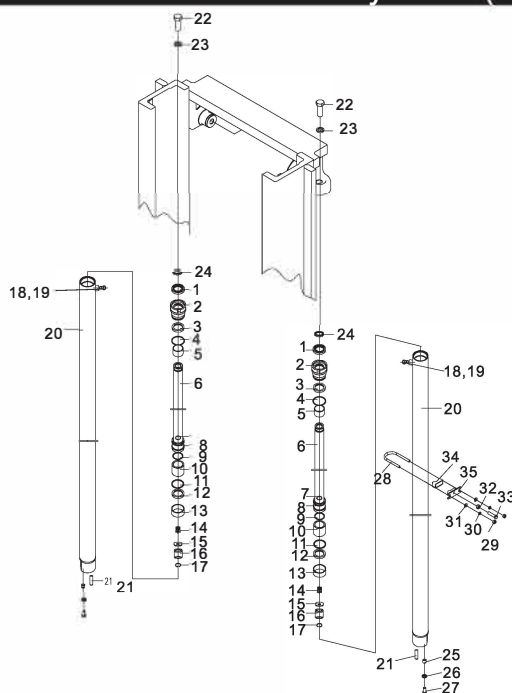


序号 Item No	编 码 Code	零部件名称 Description	数量 Q'ty	备 注 Remark
18	D129F3B25	组合垫圈5	Ring	2
19	BE821D4B2	螺钉M5×6	Screw	2
20	88587DBD2	缸体	Tube cylinder	2 按高度选用
21	BFE6C01EE	圆柱销10×26	Pin	2
22	BEC011352	螺栓M16×40	Bolt M16×40	2
23	BF7BF007B	垫圈16	Washer 16	2
24	701094131	调整垫	Adjustment gasket	2 t=0.5mm
	701094137	调整垫	Adjustment gasket	2 t=1.0mm
	701094138	调整垫	Adjustment gasket	2 t=2.0mm
25	70108F43D	轴套	Shaft sleeve	2
26	BF7BEB25B	垫圈12	Washer 12	2
27	BEC2E916A	螺栓M12×1.25×25	Bolt M12×1.25×25	2
28	E2200A294	卡箍	Clamp	2
29	BF241367F	螺母M10×1.25	Nut M10×1.25	4
30	BF7BE8B4B	垫圈10	Washer 10	4
31	BF8EFB853	垫圈10	Washer 10	4
32	BF2413747	螺母M12×1.25	Nut M12×1.25	2
33	BEC2E935E	螺栓M12×1.25×50	Bolt M12×1.25×50	2

图45/FIG.45

起升油缸(基本型) /  
Lift cylinder (normal mast)

- A D20M-3X5
- B D20-3X5
- C D25M-3X5
- D D25-3X5



序号 Item No	编 码 Code	零 部 件 名 称 Description	数 量 Q'ty	备 注 Remark
34	70108A16C	橡胶垫 Rubber gasket	2	
35	70109B728	箍座 Clamp seat	2	

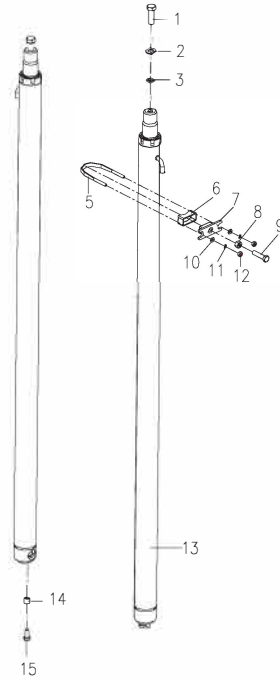
起升油缸参数/Lift cylinder parameter

编 码 Code	起升高度 Lifting height	活 塞 杆 Postion rod	缸 体 Cylinder body	备 注 Remark
3DD76040E	2000	885952904	88589A110	
3DD760418	2500	88595290E	88589A11A	
3DD760422	2700	885952918	88589A124	
3DD760404	3000	885952922	88589A12E	标准
3DD76042C	3300	88595292C	88589A138	
3DD760436	3500	885952936	88589A142	
3DD760440	3700	885952940	88589A14C	
3DD76044A	4000	88595294A	88589A156	
3DD760454	4250	885952954	88589A160	
3DD76045E	4500	88595295E	88589A16A	
3DD7E7C6A	4750	885952968	88589A174	
3DD7E7C74	5000	885952972	88589A17E	
3DD7E7C7E	5500	88595297C	88589A188	
3DD7E7C88	6000	885952986	88589A192	

图46/FIG.46

起升油缸及管路(基本型) /  
Lift cylinder and pipeline (normal mast)

- E D30M-3X5
- F D30-3X5
- G D35M-3X5
- H D35-3X5
- I D38M-3X5
- J D38-3X5



序号 Item No	编 码 Code	零部件名称 Description	数量 Q'ty	备 注 Remark
1	BEC011352	螺栓M16×40 Bolt M16×40	2	EF
	BEC0159A2	螺栓M20×55 Bolt M20×55	2	GHIJ
2	701094131	调整垫 Adjustment gasket	2	EF/0.5mm
	701094137	调整垫 Adjustment gasket	2	EF/1mm
	701094138	调整垫 Adjustment gasket	2	EF/2mm
	701094134	调整垫 Adjustment gasket	2	GHIJ/0.5mm
	701094134	调整垫 Adjustment gasket	2	GHIJ/1mm
	701094134	调整垫 Adjustment gasket	2	GHIJ/2mm
3	BF7BF007B	垫圈16 Washer 16	2	EF
	BF7BF4E9B	垫圈20 Washer 20	2	GHIJ
4	D140D7125	喉箍d16(10~16) Hoop	5	
5	E2200A294	卡箍 Clamp	2	
6	70108A16C	橡胶垫 Rubber gasket	2	
7	70109B728	箍座 Clamp seat	2	
8	BF2413747	螺母M12×1.25 Nut M12×1.25	2	
9	BEC2E935E	螺栓M12×1.25×50 Bolt M12×1.25×50	2	



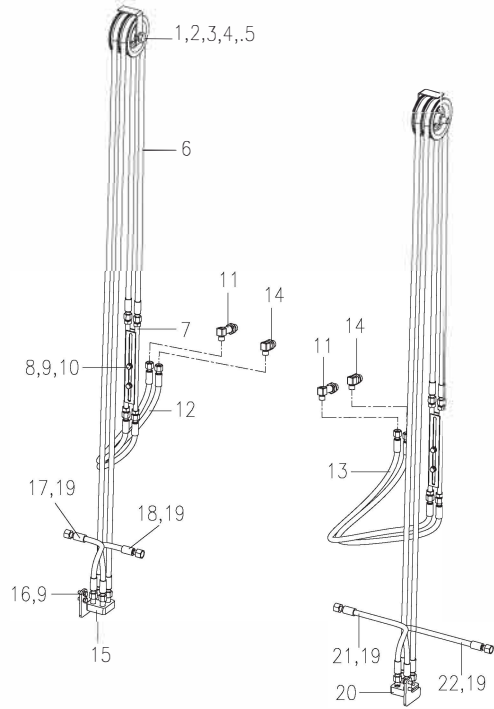




图48/FIG.48

侧移管路(基本型) / Side shifting pipeline (Normal mast)

- A D20M-3X5
- B D20-3X5
- C D25M-3X5
- D D25-3X5
- E D30M-3X5
- F D30-3X5
- G D35M-3X5
- H D35-3X5
- I D38M-3X5
- J D38-3X5



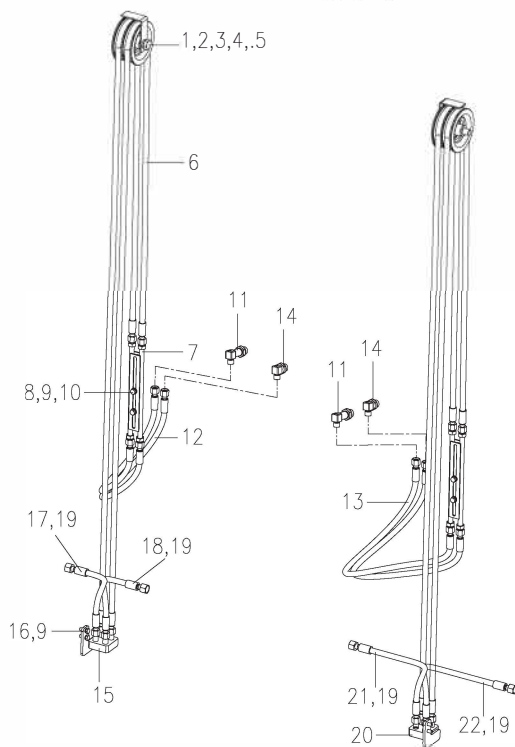
高度 Lifting height	2000	2500	2700	3000	3300	3500	3700	4000
序号6胶管(3t) Hose.NO.6	4057DE906	66F2FE68	66F2FDB5	4057DD801	4057DF01B	4057DF23A	4057DE91C	66F320A2
高度 Lifting height	4250	4500	4750	5000	5500	6000		
序号6胶管(3t) Hose.NO.6	4057DEBDD	4057DEBDE	4057DEBDF	4057DEF84	4057DEF86	4057DECC5		
高度 Lifting height	2000	2500	2700	3000	3300	3500	3700	4000
序号6胶管(3.5t) Hose.NO.6	29C49A60D	42D42AE8r	29C49AC6F	29C49AF12	29C49AF3A	42D42AD9	29C49AC41	29BA1B24C
高度 Lifting height	4250	4500	4750	5000	5500	6000		
序号6胶管(3.5t) Hose.NO.6	4057DEF82	4057DF213	4057E0C6A	4057DF389	4057DEBE1	4057DF38D		

序号 Item No	编 码 Code	零部件名称 Description	数量 Q'ty	备 注 Remark
1	E2200807B	滑轮总成	Pulley 1	四联2个
2	70108C4FC	挡板	Baffle 1	四联2个
3	BEC5C9BBE	螺栓M16×1.5×90	Bolt M16×1.5×90 1	四联2个
4	BF8F02D83	垫圈16	Washer 16 2	四联3个
5	BF7BF007B	垫圈16	Washer 16 1	四联2个
6	4057DEF71	胶管总成	Hose assy. 2	A-F/四联4根
	4057DF212	胶管总成	Hose assy. 2	GHIJ/四联4根
7	70107189C	钢管总成	Steel tube assy. 1	四联2个
8	BEC006E16	螺栓M8×40	Bolt M8×40 2	四联4个
9	BF7BE643B	垫圈8	Washer 8 4	四联8个

图48/FIG.48

侧移管路(基本型) / Side shifting pipeline (Normal mast)

- A D20M-3X5
- B D20-3X5
- C D25M-3X5
- D D25-3X5
- E D30M-3X5
- F D30-3X5
- G D35M-3X5
- H D35-3X5
- I D38M-3X5
- J D38-3X5

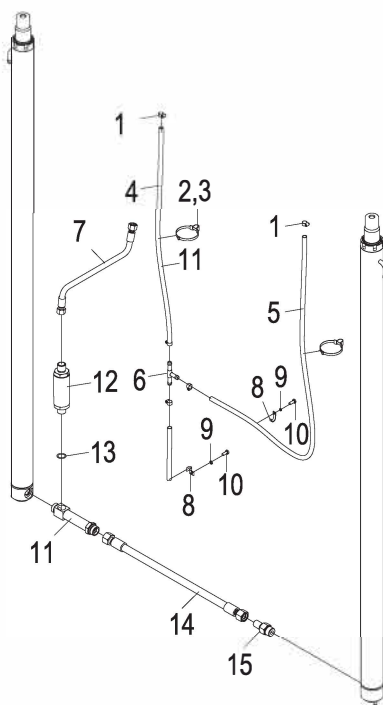


序号 Item No	编 码 Code	零部件名称 Description	数量 Q'ty	备 注 Remark
10	BF8EF9143	垫圈8 Washer 8	2	四联4个
11	4057E10CB	胶管总成 Transition connector	2	
12	4057E10CC	胶管总成 Hose assy.	2	四联用
13	E22008973	过渡接头 Hose assy.	1	四联2个
14	E22008974	过渡接头 Transition connector	1	四联2个
15	E2200A27D	接头焊合 Connector weldment	1	
16	BEC006C86	螺栓M8×20 Bolt M8×20	2	四联4个
17	4057DE2E6	胶管总成 Hose assy.	1	
18	4057DEDA7	胶管总成 Hose assy.	1	
19	D1281E4FD	O形圈8×2.65 O-ring 8×2.65	2	四联4个
20	E2200A280	接头焊合 Connector weldment	1	四联用
21	4057DE390	胶管总成 Hose assy.	1	四联用
22	4057DE391	胶管总成 Hose assy.	1	四联用



**图50/FIG.50**
**起升管路(基本型) /  
Lift pipeline (normal mast)**

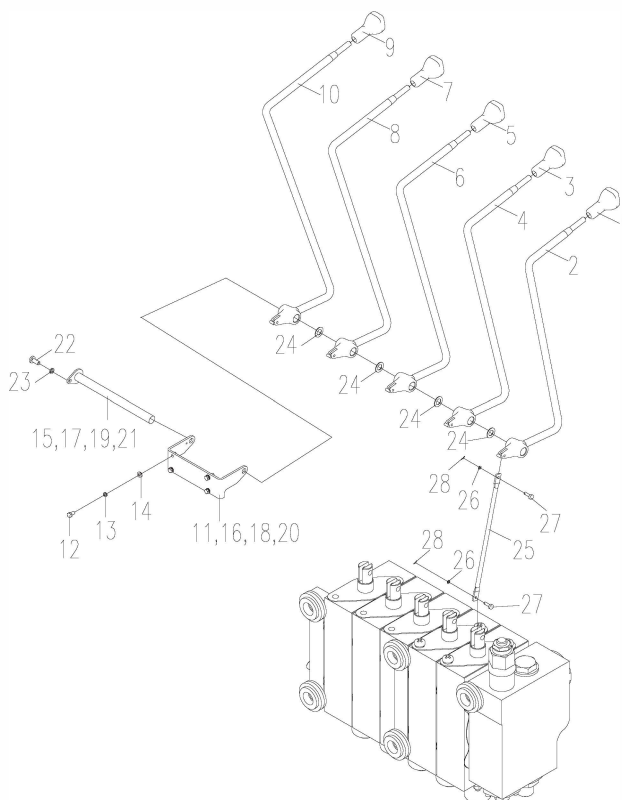
**E D30M-3X5**  
**F D30-3X5**  
**G D35M-3X5**  
**H D35-3X5**  
**I D38M-3X5**  
**J D38-3X5**



序号 Item No	编 码 Code	零部件名称 Description	数量 Q'ty	备 注 Remark
1	D140D7125	喉箍d16(10~16)	Hoop 5	
2	FD9E25C04	扎带5×350	Binding tape 2	
3	E2E94446C	回油管布夹	Oil return pipe cloth clip 2	
4	6FCDDA519	塑料管Φ12×1.5-L=900	Plastic tube 1	EF
	7741205A7	塑料管Φ12×1.5-L=1040	Plastic tube 1	GHIJ
5	6FCDC7D49	塑料管Φ12×1.5-L=1360	Plastic tube 1	EF
	7741205AB	塑料管Φ12×1.5-L=1440	Plastic tube 1	GHIJ
6	6FCDC7C82	三通接头	T-connector 1	
7	4057DD6E7	胶管总成	Hose assy. 1	
8	E22008958	管夹	Hose assy. 3	
9	BF7BE3D2B	垫圈6	Pipe clip 3	
10	BEC004512	螺栓M6×16	Washer 6 3	
11	E2E9443D3	三通接头总成	Bolt M6×16 1	
12	E0A678AB5	限速阀	T-connector assy. 1	
13	D1280CB59	O形圈19×2.65	Speed limited valve 1	
14	4057E13B8	胶管总成	Hose assy. 1	EF



- A D20M-3X5
- B D20-3X5
- C D25M-3X5
- D D25-3X5
- E D30M-3X5
- F D30-3X5
- G D35M-3X5
- H D35-3X5
- I D38M-3X5
- J D38-3X5

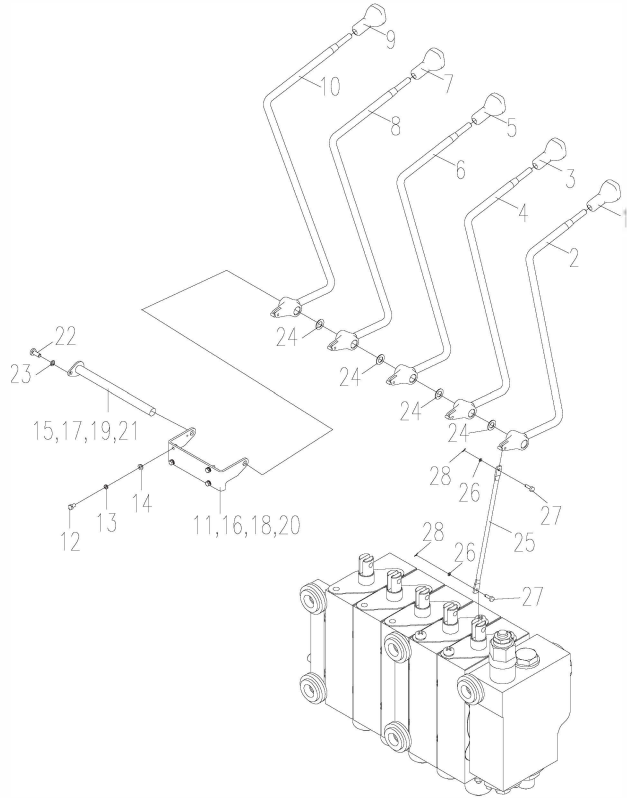


序号 Item No	编 码 Code	零部件名称 Description	数量 Q'ty	备 注 Remark
1	E27F67F58	手柄总成 Handle assembly	1	
2	E2200A97F	操纵杆焊合 Control rod weldment	1	
3	E27F67F59	手柄总成 Handle assembly	1	
4	E2200A981	操纵杆焊合 Control rod weldment	1	
5	E27F67F5A	手柄总成 Handle assembly	1	三联1件/四联1件 /五联1件
6	E2200A983	操纵杆焊合 Control rod weldment	1	三联1件/四联1件 /五联1件
7	E27F67F5B	手柄总成 Handle assembly	1	四联1件/五联1件
8	E2200A985	操纵杆焊合 Control rod weldment	1	四联1件/五联1件
9	E27F67F5C	手柄总成 Handle assembly	1	五联1件
10	E2200A987	操纵杆焊合 Control rod weldment	1	五联1件
11	E2200A276	支架焊合 Bracket	1	两联1件
12	BEC006CEA	螺栓M8×25 Bolt M8×25	4	
13	BF7BE643B	垫圈8 Washer 8	4	两联1件
14	BF8EF9143	垫圈8 Washer 8	4	三联1件
15	E2200A26E	销轴焊合 Pin shaft weldment	1	三联1件
16	E2200A277	支架焊合 Bracket weldment	1	四联1件

图51/FIG.51

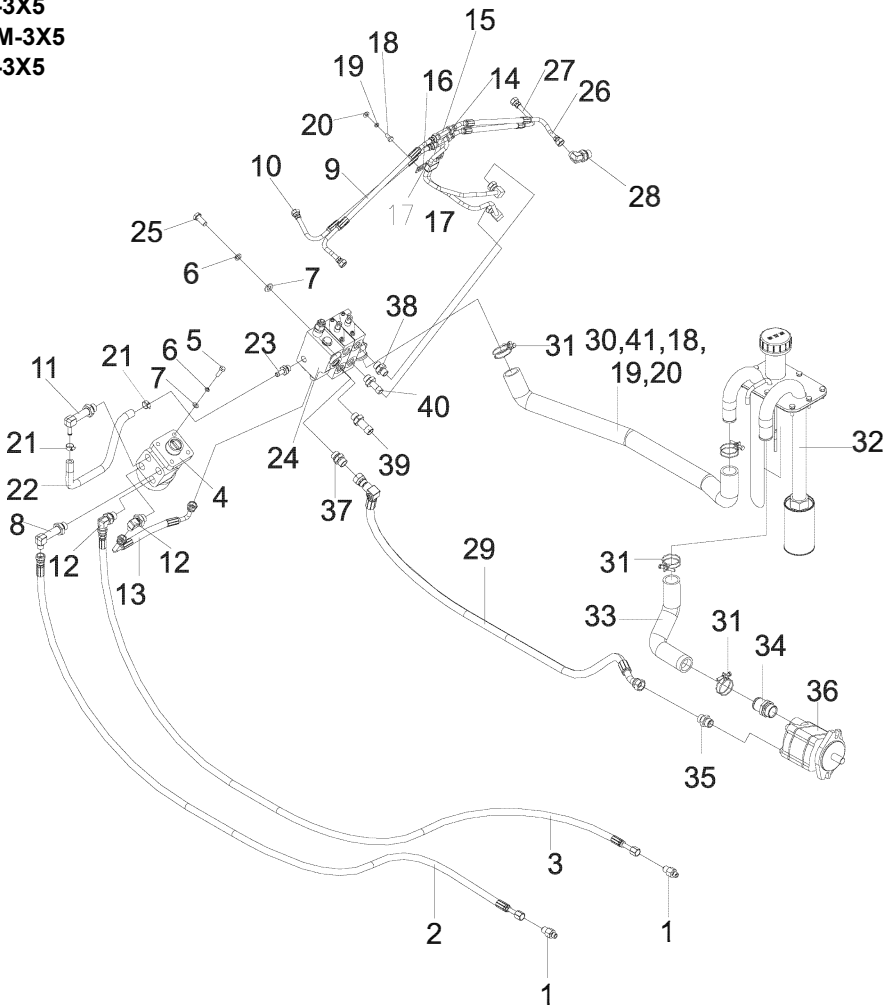
多路阀操纵(五联)  
Multi-way valve control (Quintuplex)

- A D20M-3X5
- B D20-3X5
- C D25M-3X5
- D D25-3X5
- E D30M-3X5
- F D30-3X5
- G D35M-3X5
- H D35-3X5
- I D38M-3X5
- J D38-3X5



序号 Item No	编 码 Code	零部件名称 Description	数量 Q'ty	备 注 Remark
17	E2200A26F	销轴焊合 Pin shaft weldment	1	三联1件
18	E2200A278	支架焊合 Bracket weldment	1	四联1件
19	E2200A270	销轴焊合 Pin shaft weldment	1	四联1件
20	E2200A279	支架焊合 Bracket weldment	1	五联1件
21	E2200A271	销轴焊合 Pin shaft weldment	1	五联1件
22	BEC0044AE	螺栓M6×12 Bolt M6×12	1	
23	BF7BE3D2B	垫圈6 Washer 6	2	
24	E2200A268	垫圈 Washer	2	三联3件/四联4件 /五联5件
25	E2200A269	连接杆 Connecting rod	4	三联3件/四联4件 /五联5件
26	BF8EF4323	垫圈5 Washer 5	4	三联3件/四联4件 /五联5件
27	E2E388C57	销轴 Pin shaft	4	三联6件/四联8件 /五联10件
28	BFE5BAD11	销2×25 Pin 2×25		三联6件/四联8件 /五联10件

- A D20M-3X5
- B D20-3X5
- C D25M-3X5
- D D25-3X5
- E D30M-3X5
- F D30-3X5
- G D35M-3X5
- H D35-3X5
- I D38M-3X5
- J D38-3X5



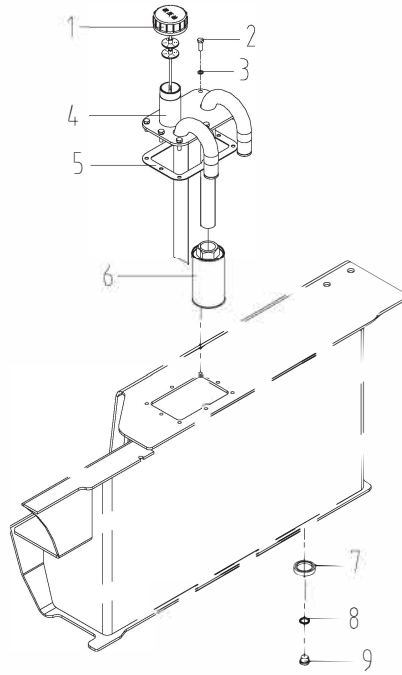
## 液压系统/Hydraulic system

序号 Item No	编 码 Code	零部件名称 Description	数量 Q'ty	备 注 Remark
1	41919F2B6	过渡接头 Transition connector	2	
2	4057e1592	胶管总成 Hose assembly	1	ABCD
	4057E10C0	胶管总成 Hose assembly	1	EFGHJ
3	4057e1591	胶管总成 Hose assembly	1	ABCD
	4057E10C1	胶管总成 Hose assembly	1	EFGHJ
4	E0A75466C	转向器 Steering gear	1	
5	BE82293B5	螺钉M10×30 Screw M10×30	4	
6	BF7BE8B4B	垫圈10 Washer 10	7	
7	BF8EFB853	垫圈10 Washer 10	7	
8	E2200A198	过渡接头 Transition connector	1	
9	E2DEC7B5E	胶管总成 Hose assembly	1	
10	4057E10BE	胶管总成 Hose assembly	1	
11	E2200A197	过渡接头 Transition connector	1	
12	41919F35E	过渡接头 Transition connector	2	
13	4057E13E9	胶管总成 Hose assembly	1	
14	E2200A18F	钢管总成 Steel tube assembly	1	
15	E2200A18E	钢管总成 Steel tube assembly	1	
16	E2200A2BE	支架 Bracket	1	
17	E2200A2BD	橡胶垫 Rubber gasket	1	
18	BEC006CEA	螺栓M8×25 Bolt M8×25	3	
19	BF7BE643B	垫圈8 Washer 8	3	
20	BF8EF9143	垫圈8 Washer 8	3	
21	D140D79BD	喉箍d25 (16~25) Hoop	2	
22	E2200A220	胶管 Hose	1	
23	E2200A196	过渡接头 Transition connector	1	
24	E0A292EB7	多路阀总成(二片) Multi-way valve	1	ABCD
	E0A292EBB	多路阀总成(三片) Multi-way valve	1	ABCD
	E0A292EBC	多路阀总成(四片) Multi-way valve	1	ABCD
	E0A29321A	多路阀总成(五片) Multi-way valve	1	ABCD
	E0A292FE8	多路阀总成CE(三片) Multi-way valve	1	ABCD
	E0A292FE7	多路阀总成CE(二片) Multi-way valve	1	ABCD
	E0A292FE9	多路阀总成CE(四片) Multi-way valve	1	ABCD
	E0A2935F7	多路阀总成CE(五片) Multi-way valve	1	ABCD
	E0A29204F	多路阀总成(二片) Multi-way valve	1	EFGHJ
	E0A292050	多路阀总成(三片) Multi-way valve	1	EFGHJ
	E0A292051	多路阀总成(四片) Multi-way valve	1	EFGHJ



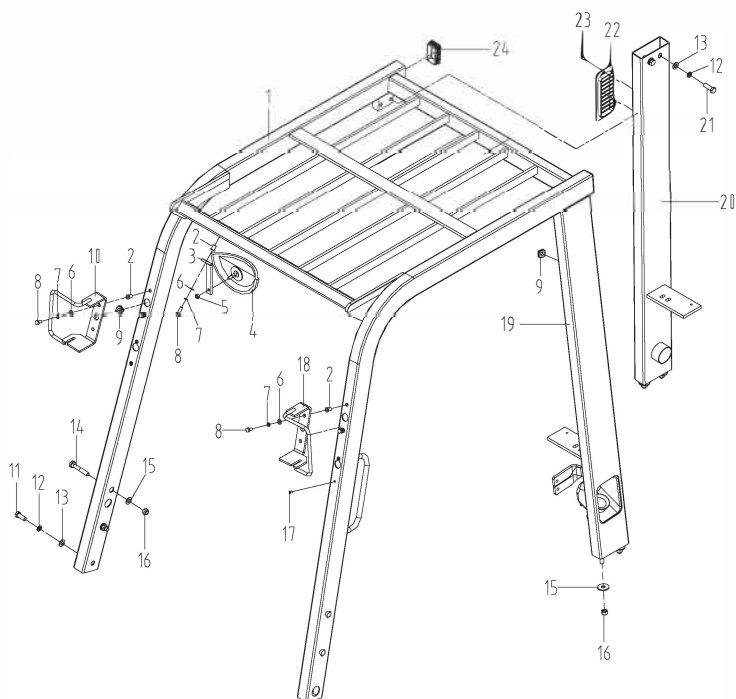
**图53/FIG.53**
**液压油箱/Hydraulic oil tank**

- A D20M-3X5
- B D20-3X5
- C D25M-3X5
- D D25-3X5
- E D30M-3X5
- F D30-3X5
- G D35M-3X5
- H D35-3X5
- I D38M-3X5
- J D38-3X5



序号 Item No	编 码 Code	零部件名称 Description	数量 Q'ty	备 注 Remark
1	E0A292057	油尺总成 Oil dipstick assembly	1	
2	BEC006C86	螺栓M8×20 Bolt M6×16	8	
3	D129F6B31	组合垫圈8 Combination washer8	8	
4	6FCAEA3DD	液压油箱盖板焊合 Cover plate weldment	1	
5	E2200A8E3	密封垫 Seal gasket	1	
6	E0A292053	滤油器总成 Filter element assembly	1	
7	E32B0F71A	磁铁50×25×8 Magnet 50×25×8	1	
8	D129F6429	组合垫圈18 Combination washer18	1	
9	D1BDC59DA	螺塞M18×1.5 Plug M18×1.5	1	

- A D20M-3X5
- B D20-3X5
- C D25M-3X5
- D D25-3X5
- E D30M-3X5
- F D30-3X5
- G D35M-3X5
- H D35-3X5
- I D38M-3X5
- J D38-3X5

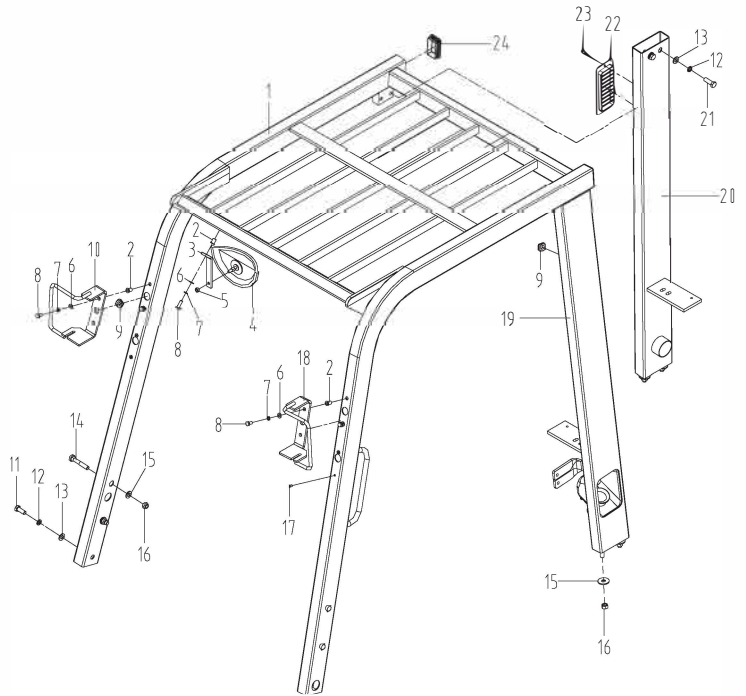


序号 Item No	编 码 Code	零部件名称 Description	数量 Q'ty	备 注 Remark
1	6FCFA3120	护顶架焊合 Overhead guard weldment	1	
2	E22007F5E	铆螺母M8×18 Rivet nut M8×18	5	
3	6FCFB0CBB	支架 Bracket	1	
4	E22008C34	后视镜总成 Backup mirror assy.	1	
5	BF222B457	螺母M8 Nut M8	1	
6	BF8EF9143	垫圈8 Washer 8	5	
7	BF7BE643B	垫圈8 Washer 8	5	
8	BEC006CEA	螺栓M8×25 Bolt M8×25	5	
9	E32B0F60E	过线圈 Rubber ring	3	
10	6FCF992A9	支架焊合 Bracket weldment	1	
11	BEC00BB6E	螺栓M12×30 Bolt M12×30	2	
12	BF7BEB25B	垫圈12 Washer 12	6	
13	BF8EFDF63	垫圈12 Washer 12	6	
14	E2200A977	螺栓 Bolt	4	
15	BF8E09D29	垫圈12 Washer 12	8	
16	BF429800F	螺母M12 Nut M12	8	

图54/FIG.52

护顶架/Overhead guard

- A D20M-3X5
- B D20-3X5
- C D25M-3X5
- D D25-3X5
- E D30M-3X5
- F D30-3X5
- G D35M-3X5
- H D35-3X5
- I D38M-3X5
- J D38-3X5

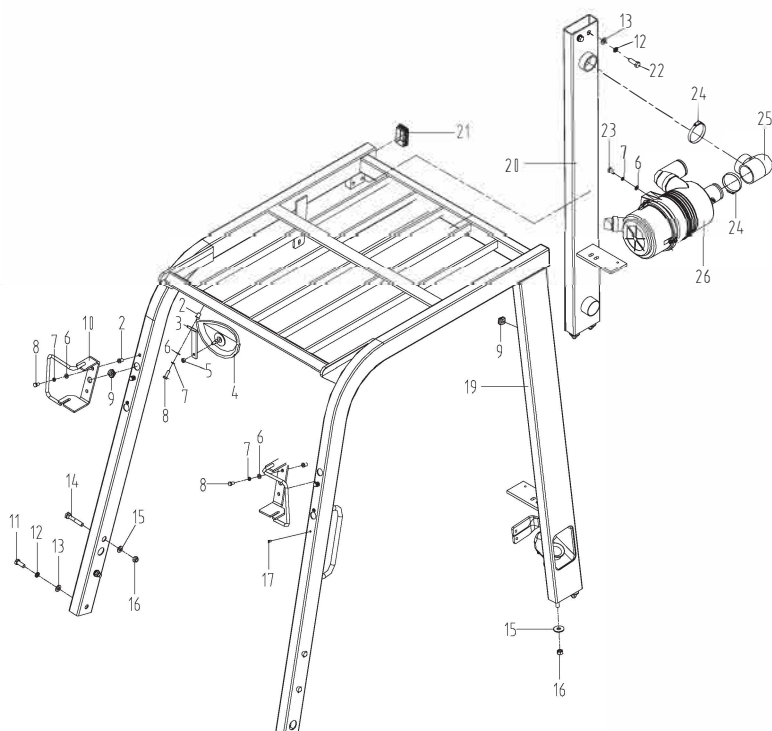


序号 Item No	编 码 Code	零部件名称 Description	数量 Q'ty	备 注 Remark
17	E22007F5D	铆螺母M6×16.5 Rivet nut M6×16.5	4	
18	6FCF992A8	支架焊合 Bracket weldment	1	
19	6FCFA2D41	立柱焊合 Stand column weldment	1	
20	6FCFA2D42	立柱焊合 Stand column weldment	1	
21	BEC2E9232	螺栓M12×1.25×35 Bolt M12×1.25×35	4	
22	6FCFBDEE0	进气罩 Air inlet hood	1	
23	BE639DB9B	螺钉M6×12 Screw M6×12	2	
24	E2200A9F7	塑料盖 Rubber cover	2	

图55/FIG.55

护顶架(双空滤)  
Overhead guard (double air filter)

- A D20M-3X5
- B D20-3X5
- C D25M-3X5
- D D25-3X5
- E D30M-3X5
- F D30-3X5
- G D35M-3X5
- H D35-3X5
- I D38M-3X5
- J D38-3X5

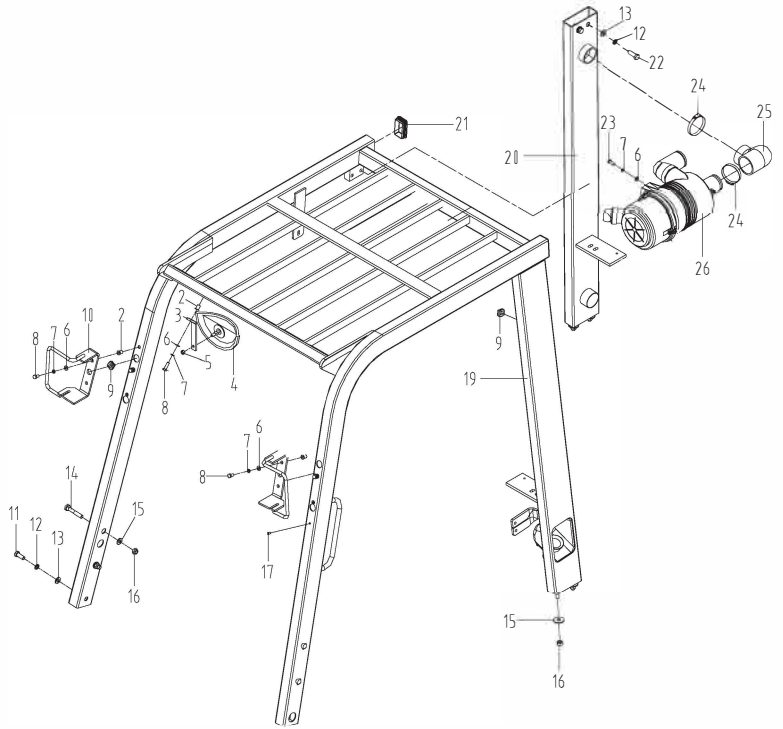


序号 Item No	编 码 Code	零部件名称 Description	数量 Q'ty	备 注 Remark
1	6FCFA309B	护顶架焊合 Overhead guard weldment	1	
2	E22007F5E	铆螺母M8×18 Rivet nut M8×18	5	
3	6FCFB0CBB	支架 Bracket	1	
4	E22008C34	后视镜总成 Backup mirror assy.	1	
5	BF222B457	螺母M8 Nut M8	1	
6	BF8EF9143	垫圈8 Washer 8	5	
7	BF7BE643B	垫圈8 Washer 8	5	
8	BEC006CEA	螺栓M8×25 Bolt M8×25	5	
9	E32B0F60E	过线圈 Rubber ring	3	
10	6FCF992A9	支架焊合 Bracket weldment	1	
11	BEC00BB6E	螺栓M12×30 Bolt M12×30	2	
12	BF7BEB25B	垫圈12 Washer 12	6	
13	BF8EFDF63	垫圈12 Washer 12	6	
14	E2200A977	螺栓 Bolt	4	
15	BF8E09D29	垫圈12 Washer 12	8	
16	BF429800F	螺母M12 Nut M12	8	

图55/FIG.55

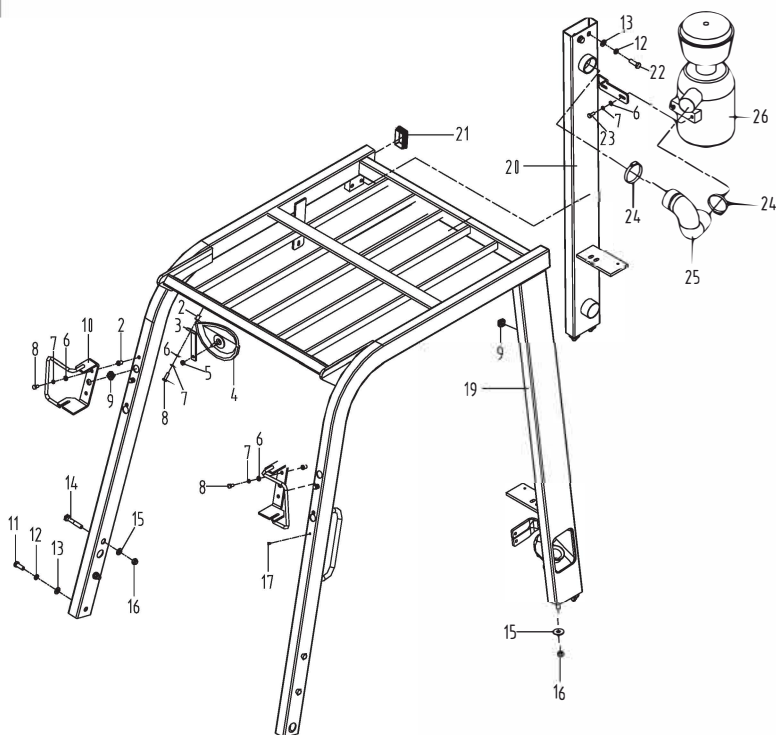
护顶架(双空滤)  
Overhead guard (double air filter)

- A D20M-3X5
- B D20-3X5
- C D25M-3X5
- D D25-3X5
- E D30M-3X5
- F D30-3X5
- G D35M-3X5
- H D35-3X5
- I D38M-3X5
- J D38-3X5



序号 Item No	编 码 Code	零部件名称 Description	数量 Q'ty	备 注 Remark
17	E22007F5D	铆螺母M6×16.5 Rivet nut M6×16.5	4	
18	6FCF992A8	支架焊合 Bracket weldment	1	
19	6FCFA2D41	立柱焊合 Stand column weldment	1	
20	6FCFA2DE8	立柱焊合 Stand column weldment	1	
21	E2200A9F7	塑料盖 Rubber cover	2	
22	BEC2E9232	螺栓M12×1.25×35 Bolt M12×1.25×35	4	
23	BEC006C86	螺栓M8×20 Bolt M8×20	2	
24	D140D7959	喉箍d80(60~80) Hoop d80(60~80)	2	
25	E22008CA2	成型管 Molding pipe	1	
26	6FC332854	空滤器总成 Air filter assy.	1	

- A D20M-3X5
- B D20-3X5
- C D25M-3X5
- D D25-3X5
- E D30M-3X5
- F D30-3X5
- G D35M-3X5
- H D35-3X5
- I D38M-3X5
- J D38-3X5

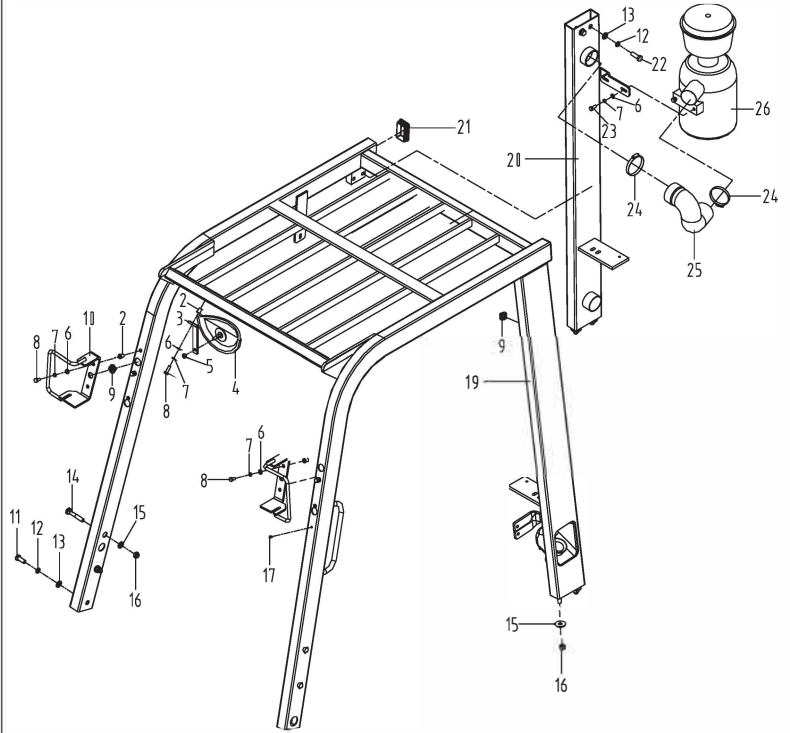


序号 Item No	编 码 Code	零部件名称 Description	数量 Q'ty	备 注 Remark
1	6FCFA309B	护顶架焊合 Overhead guard weldment	1	
2	E22007F5E	铆螺母M8×18 Rivet nut M8×18	5	
3	6FCFB0CB	支架 Bracket	1	
4	E22008C34	后视镜总成 Backup mirror assy.	1	
5	BF222B457	螺母M8 Nut M8	1	
6	BF8EF9143	垫圈8 Washer 8	5	
7	BF7BE643B	垫圈8 Washer 8	5	
8	BEC006CEA	螺栓M8×25 Bolt M8×25	5	
9	E32B0F60E	过线圈 Rubber ring	3	
10	6FCF992A9	支架焊合 Bracket weldment	1	
11	BEC00BB6E	螺栓M12×30 Bolt M12×30	2	
12	BF7BEB25B	垫圈12 Washer 12	6	
13	BF8EFD63	垫圈12 Washer 12	6	
14	E2200A977	螺栓 Bolt	4	
15	BF8E09D29	垫圈12 Washer 12	8	
16	BF429800F	螺母M12 Nut M12	8	

图56/FIG.56

护顶架(油滤双空滤)  
Overhead guard (double air filter)

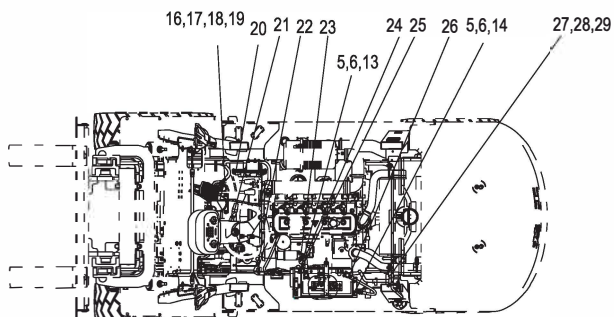
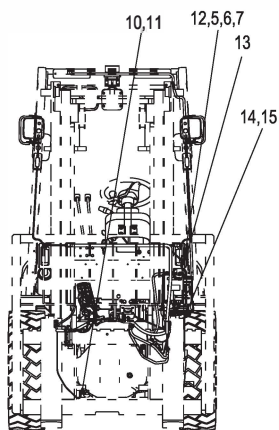
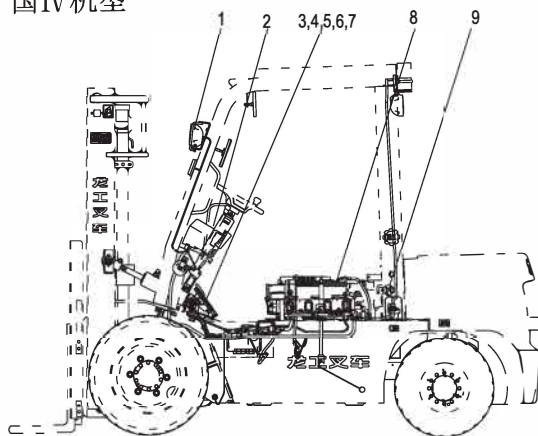
- A D20M-3X5
- B D20-3X5
- C D25M-3X5
- D D25-3X5
- E D30M-3X5
- F D30-3X5
- G D35M-3X5
- H D35-3X5
- I D38M-3X5
- J D38-3X5



序号 Item No	编 码 Code	零部件名称 Description	数量 Q'ty	备 注 Remark
17	E22007F5D	铆螺母M6×16.5 Rivet nut M6×16.5	4	
18	6FCF992A8	支架焊合 Bracket weldment	1	
19	6FCFA2D41	立柱焊合 Stand column weldment	1	
20	6FCFA2CF3	立柱焊合 Stand column weldment	1	
21	E2200A9F7	塑料盖 Rubber cover	2	
22	BEC2E9232	螺栓M12×1.25×35 Bolt M12×1.25×35	4	
23	BEC006C86	螺栓M8×20 Bolt M8×20	2	
24	D140D7959	喉箍d80(60~80) Hoop d80(60~80)	2	
25	E220080D2	成型管 Molding pipe	1	
26	E0AA30DB4	油浴式双空滤 Air filter assy.	1	

- A D20M-3X5
- B D20-3X5
- C D25M-3X5
- D D25-3X5
- E D30M-3X5
- F D30-3X5
- G D35M-3X5
- H D35-3X5
- I D38M-3X5
- J D38-3X5

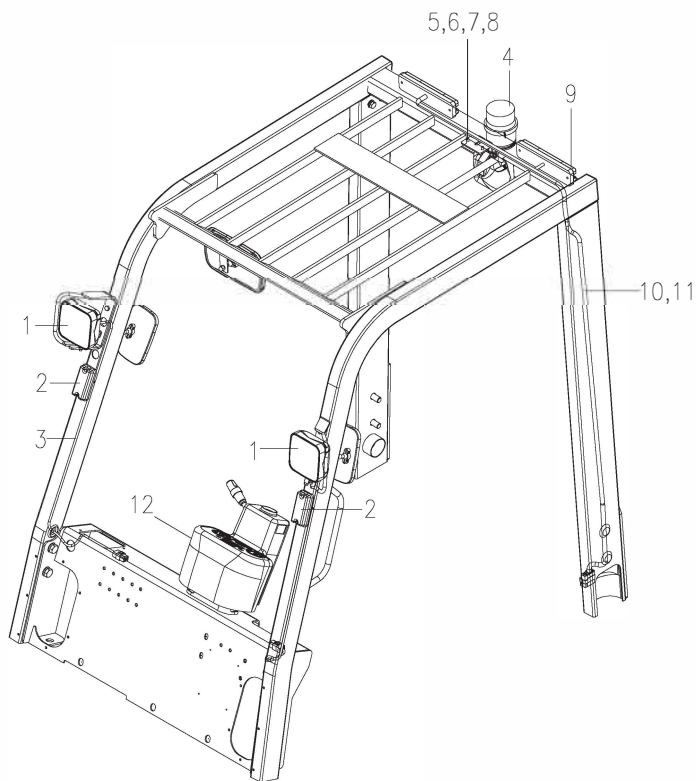
国IV机型



## 电气系统/Electric system

序号 Item No	编 码 Code	零部件名称 Description	数量 Q'ty	备 注 Remark
1	6FD0996A0	信号灯电器元件总成 Electrical component assy.	1	
2	6FD09812F	电器元件总成 Electrical component assy.	1	
3	E101F167C	加速踏板总成 Acceleration pedal assy.	1	
4	BEC006CEA	螺栓M8×25 Bolt M8×25	2	
5	BF7BE643B	垫圈8 Washer 8	5	
6	BF8EF9143	垫圈8 Washer 8	5	
7	BF222B457	螺母M8 Nut M8	2	
8	6FD099784	蓄电池盒总成 Battery box assy.	1	
9	E103DAF05	倒车蜂鸣器 Backup buzzer	1	
10	6FD0B0D36	温度报警开关 Temperature alarm switch	1	液力/电液箱用
11	6FD0990DF	连接线束 Connecting harness	1	液力/电液箱用
12	E102EE197	喇叭 Horn	1	
13	BEC006C22	螺栓M8×16 Bolt M8×16	3	
14	E101F0199	油量传感器 Oil capacity sensor	1	
15	E101F019A	油量传感器 Oil capacity sensor	1	选配
16	E101F215F	连接线束(两联) Connecting harness(Duplex)	1	两联用
17	E101F2160	连接线束(三联) Connecting harness(Triplex)	1	三联用
18	E101F2161	连接线束(四联) Connecting harness (quadplex)	1	四联用
19	E101F2162	连接线束(五联) Connecting harness (	1	五联用
20	6FD098174	电器元件总成 Electrical component assy.	1	新/全柴
	6FD098178	电器元件总成 Electrical component assy.	1	云内
21	E101F018B	刹车灯开关 Brake lamp switch	1	
22	E101F018E	地线电缆 Ground cable	1	
23	E101F05ED	连接电缆 Connecting cable	1	
24	6FD09988E	易熔线 Fusible wire	1	
25	E101F05EE	地线电缆 Fusible wire	1	
26	E101F173A	线束总成 Ground cable	1	
27	E101F20B2	线束总成 Wiring harness assy	1	电液, 新/全柴
	E101F20B4	线束总成 Wiring harness assy	1	电控, 云内
28	E101F17D1	连接线束 Wiring harness assy	1	液力电控
29	6FD0990E5	连接线束 Connecting harness	1	液力电控

- A D20M-3X5
- B D20-3X5
- C D25M-3X5
- D D25-3X5
- E D30M-3X5
- F D30-3X5
- G D35M-3X5
- H D35-3X5
- I D38M-3X5
- J D38-3X5

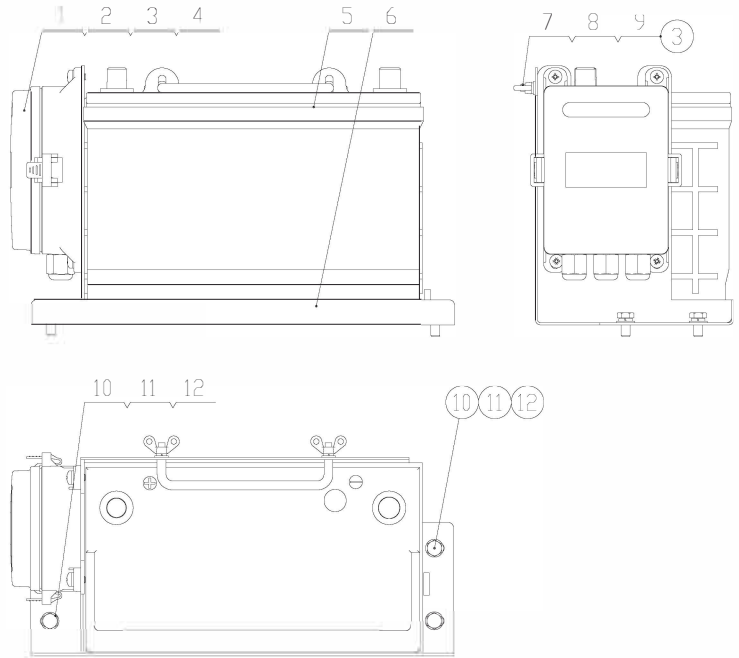


序号 Item No	编 码 Code	零 部 件 名 称 Description	数 量 Q'ty	备 注 Remark
1	E101F0620	工作灯 Working lamp	2	后视镜数量为3
2	E101EFDDF	前组合灯 Front combination lamp	2	
3	6FD0989BC	护顶架线束 Overhead guard harness	2	
4	6FD098953	警示灯 Warning lamp	1	选配
5	BEC004512	螺栓M6×16 Bolt M6×16	2	警示灯后照灯用
6	BF8EF6A33	垫圈6 Washer 6	2	警示灯后照灯用
7	BF7BE3D2B	垫圈6 Washer 6	2	警示灯后照灯用
8	6FD0A4F0A	支架 Bracket	1	警示灯后照灯用
9	E101EE032	后组合灯 Rear combination lamp	2	LED
10	E101F018C	灯具线束 Lamp harness	1	
11	E101F018D	灯具线束 Lamp harness	1	警示灯后照灯用
12	E106B75E0	警示灯开关 Working lamp switch	1	后大灯用

图59/FIG.59

蓄电池盒总  
Battery box assembly

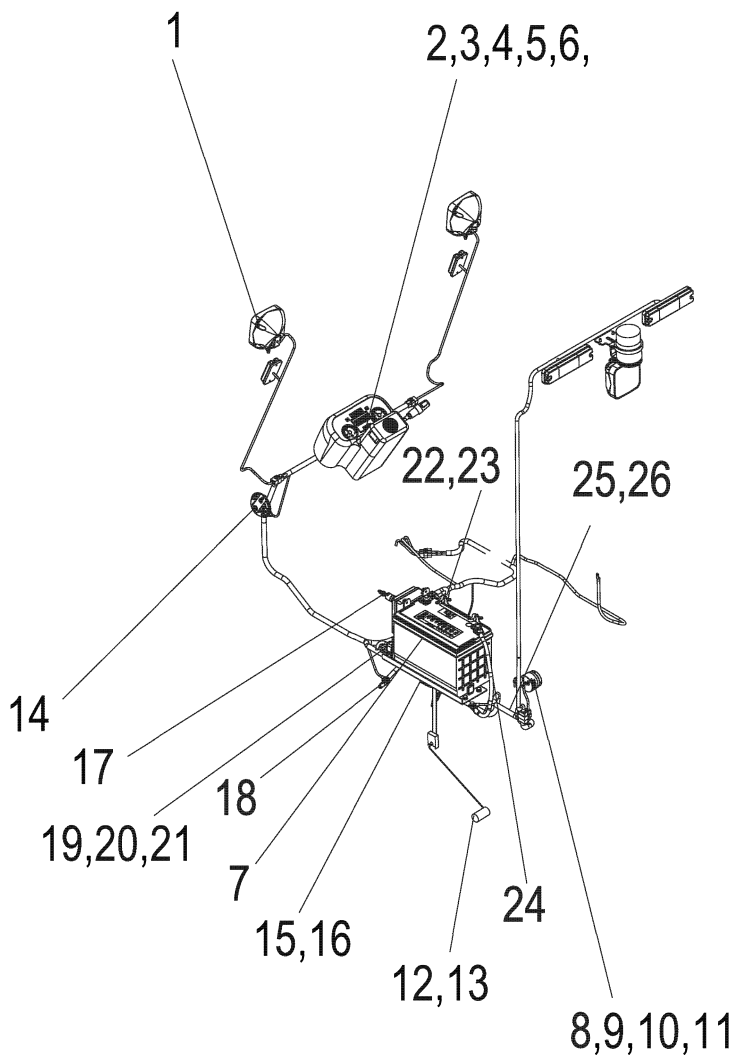
- A D20M-3X5
- B D20-3X5
- C D25M-3X5
- D D25-3X5
- E D30M-3X5
- F D30-3X5
- G D35M-3X5
- H D35-3X5
- I D38M-3X5
- J D38-3X5



序号 Item No	编 码 Code	零部件名称 Description	数量 Q'ty	备 注 Remark
1	E101F0192	控制盒 Control box	1	
2	E101F0193	控制盒 Control box	1	
3	BF8EF6A33	垫圈6 Washer 6	6	
4	BE94408E0	螺钉M6×12 Screw M6×12	4	
5	E101EE60E	蓄电池 Battery	1	
6	6FD09805F	电瓶支架焊合 Battery carrier weldment	1	
7	6FD0B03D4	卡子 Clip	1	
8	BF4EFDC14	螺母M6 Nut M6	2	
9	BF7BE3D2B	垫圈6 Washer 6	2	
10	BEC006C22	螺栓M8×16 Bolt M8×16	4	
11	BF8EF9143	垫圈8 Washer 8	4	
12	BF7BE643B	垫圈8 Washer 8	4	

- A D20M-3X5
- B D20-3X5
- C D25M-3X5
- D D25-3X5
- E D30M-3X5
- F D30-3X5
- G D35M-3X5
- H D35-3X5
- I D38M-3X5
- J D38-3X5

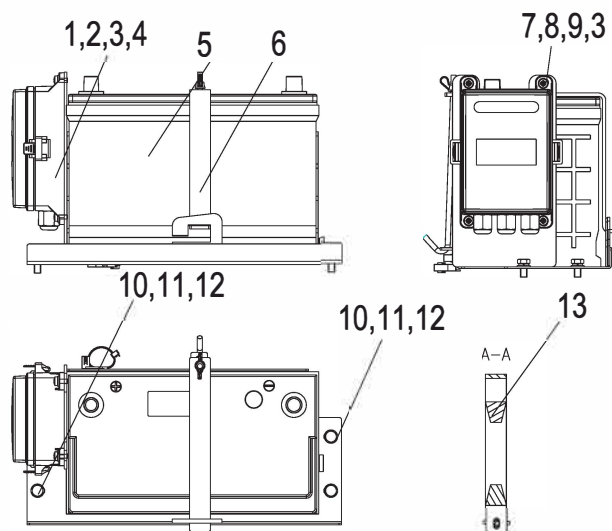
国 II 机型





国 II 车型

- A D20M-3X5
- B D20-3X5
- C D25M-3X5
- D D25-3X5
- E D30M-3X5
- F D30-3X5
- G D35M-3X5
- H D35-3X5
- I D38M-3X5
- J D38-3X5

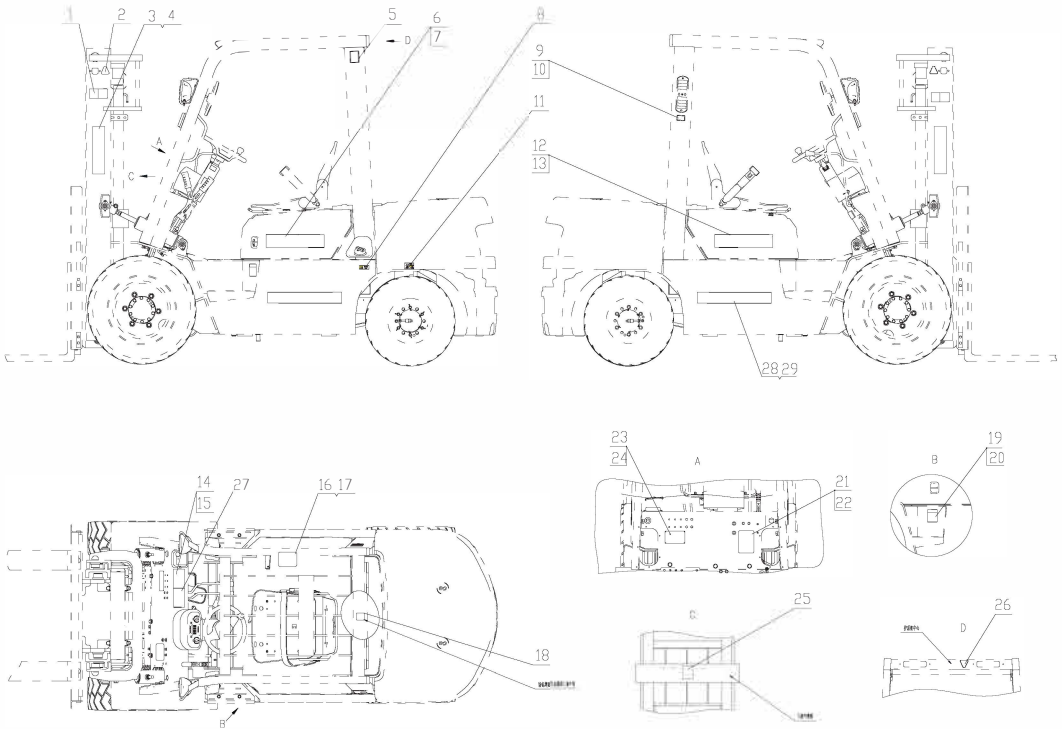


序号 Item No	编 码 Code	零部件名称 Description	数量 Q'ty	备 注 Remark
1	6FD099BB4	控制盒 Control box	1	机械液力
2	E101F21C2	控制盒 Control box	1	液力电控
3	BF8EF6A33	垫圈6 Washer 6	5	
4	BE94408E0	螺钉M6×12 Screw M6×12	4	
5	E101EE60E	蓄电池 Battery	1	
6	6FD098068	电瓶支架焊合 Battery carrier weldment	1	
7	6FD0AD87D	固定杆 Fixed rod	1	
8	BF4EFDC14	螺母M6 Nut M6	1	
9	BF7BE3D2B	垫圈6 Washer 6	1	
10	BEC006C22	螺栓M8×16 Bolt M8×16	4	
11	BF8EF9143	垫圈8 Washer 8	4	
12	BF7BE643B	垫圈8 Washer 8	4	
13	6FD0B0887	橡胶块 Rubber block	2	

图62/FIG.62

标牌/Label

- A D20M-3X5
- B D20-3X5
- C D25M-3X5
- D D25-3X5
- E D30M-3X5
- F D30-3X5
- G D35M-3X5
- H D35-3X5
- I D38M-3X5
- J D38-3X5



## 标牌/Label

序号 Item No	编 码 Code	零 部 件 名 称 Description	数量 Q'ty	备 注 Remark
1	6FD1AD2C0	警示标牌货叉上下禁止停留 Don't stay on/under fork	2	
2	6FD1AD4AB	起吊点标牌 Hoisting point label	4	
3	6FD1AD382	龙工标志 Lonking label	2	国外用
4	6FD1AD397	龙工标志 Lonking label	2	国内用
5	6FD1AD1ED	叉车吊运标牌 Hoisting and transporting label	1	
6	FD51DCA7C	型号标牌 Model label	1	AB
	E2200A2E5	型号标牌 Model label	1	CD
7	E2200A2E5	型号标牌 Model label	1	EF
	E2200A2E6	型号标牌 Model label	1	GH
8	6FD1AD76D	油品标牌燃油 Oil label-fuel	1	
9	6FD1AD2C2	警示标牌严禁冲水 Warning label-no flushing	1	国内用
10	6FD1AD2C5	警示标牌严禁冲水 Warning label-no flushing	1	国外用
11	FD51DAA85	轮胎气压标牌 Tire pressure label	1	
12	FD51DCA7D	型号标牌 Model label	1	AB
	FD51DCA7E	型号标牌 Model label	1	CD
13	E2200A2E7	型号标牌 Model label	1	EF
	E2200A2E8	型号标牌 Model label	1	GH
14	E22008246	载荷曲线图标牌 Load curve label	1	国内用
15	FD51DA90A	载荷曲线图标牌(CE) Load curve label (CE)	1	国外用
16	6FD1AD571	说明标牌(中文) Notice label (Chinese)	1	国内用
17	6FD1AD574	说明标牌 Notice label	1	国外用
18	6FD1AD2C6	警示标牌风扇伤手 Do not hurt the hand	1	
19	6FD1AD513	说明标牌气弹簧安全锁 Air spring safety lock	1	国内用
20	E22008A24	说明标牌气弹簧安全锁 Air spring safety lock	1	国外用
21	6FD1AD50E	润滑点标牌 Lubricant point label	1	国内用
22	6FD1AD510	润滑点标牌 Lubricant point label	1	国外用
23	6FD1AD2CB	环保标牌 Environmental label	1	
24	C01C07F0E	抽芯铆钉3.2×12 Blind rivet	12	
25	6FD1AD2C7	警示标牌勿伤手 Do not hurt the hand	1	
26	6FD1AD2C3	警示标牌禁止起吊 Do not lift	1	
27	6FD1AD44D	铭牌 Nameplate	1	
28	6FD1AD398	龙工标志 Lonking label	2	国内用
29	6FD1AD383	龙工标志 Lonking label	2	国外用

图63/FIG.63

平衡重/Counter weight

- A D20M-3X5
- B D20-3X5
- C D25M-3X5
- D D25-3X5
- E D30M-3X5
- F D30-3X5
- G D35M-3X5
- H D35-3X5
- I D38M-3X5
- J D38-3X5

