



A 系列 14~16 吨内燃平衡重式叉车

A series 14t~16t Internal Combustion Counterbalanced Forklift Truck

零件目录 Parts Catalogue

杭叉集团股份有限公司

HANGCHA GROUP CO., LTD.

07/2020

说 明

1、本“零件目录”汇集了 A 系列 14~16 吨内燃平衡重式叉车的零部件。

2、查询方法:

①用户可根据目录中各总成图查找所需的零部件的序号，根据序号可查得相应的图号或标准号。

②本目录中凡各种叉车通用的零件在目录中不加说明，不通用件除了在目录的右上角表示此总成所适用的车型代号和车型外，还在相应的备注中予以车型代号区别。

3、订购零件时，须写明所用叉车的型号，出厂编号，所需零部件代号、名称及订购数量。

4、维修更换零部件时，为确保质量，请使用本公司零部件。

5、为提高质量，本公司将对某些零部件进行改进，对改进部分在本目录中不能同时一一修改，请用户谅解，欲了解详细情况可与本公司销售公司及备件处联系。

6、零件变更注明了时间，如“—2020.01”表示该零件用至 2020 年 1 月，“2020.01—”表示该零件从 2020 年 1 月启用。

INFORMATION

- I .This catalogue collects all of the parts (components)in series of A series 14t-16t Internal Combustion Counterbalanced Forklift Truck.
- II .Looking up methods:
 - I) First looking up the series number of the part (component) in the drawings of the assembly, in which the part (component) is in the catalogue and then the codes of the drawing and standard of the part (the component) in terms of the series number.
 - II) No noted are all of the same parts and components otherwise they should be noted in case of difference.
- III. Model, series Number, code Number of drawing and quantity should be given when ordering the spare parts.
- IV. It is recommended to use the parts and components made by us for ideal the service and maintenance.
- V . We reserve the right of the change of the truck in construction for improving our products without notice. For the details of changes, please consult with sales department of Hangcha Group Co., ltd.
- VI. Clear indications of time are given about the accessories' change,e.g.,“—2020.01” means this accessory was used until 2020.01; “2020.01—” means this accessory is used from 2020.01 on.

目 录 CONTENTS

第一部分	传动系统	I	DRIVING SYSTEM
第二部分	转向系统	II	STERRING SYSTEM
第三部分	动力系统	III	DYNAMIC SYSTEM
第四部分	车身系统	IV	VEHICLE BODY SYSTEM
第五部分	操纵系统	V	CONTROL SYSTEM
第六部分	液压系统	VI	HYDRAULIC SYSTEM
第七部分	电气系统	VII	ELECTRICAL SYSTEM
第八部分	起升系统	VIII	LIFTING SYSTEM

第一部分 传动系统
Part I Driving system

A#CPCD160-AXG90

B#CPCD140-AXG90

C#CPCD160-AXG83

D#CPCD140-AXG83

序号 Item	名称 Description	适用车型 Serial No.	页码 Page
图 1 Fig.1	传动系统 Driving system	A#B#C#D#	1-1
图 2 Fig.2	驱动桥 Drive	A#B#C#D#	1-4
图 3 Fig.3	主减速器总成 Final drive assembly	A#B#C#D#	1-7
图 4 Fig.4	制动器总成 Brake assembly	A#B#C#D#	1-9
图 5 Fig.5	变速箱 (I) Gearbox(I)	A#B#C#D#	1-11
图 6 Fig.6	变速箱 (II) Gearbox(II)	A#B#C#D#	1-13
图 7 Fig.7	变速箱 (III) Gearbox(III)	A#B#C#D#	1-15
图 8 Fig.8	控制阀总成 Control valve assembly	A#B#C#D#	1-17
图 9 Fig.9	油泵总成 Oil pump assy	A#B#C#D#	1-20
图 10 Fig.10	R 轴总成 R axle assy	A#B#C#D#	1-22
图 11 Fig.11	F 轴总成 F axle assy	A#B#C#D#	1-24

图 1 传动系统
Fig.1 Driving system

A#CPCD160-AXG90 B#CPCD140-AXG90 C#CPCD160-AXG83 D#CPCD140-AXG83

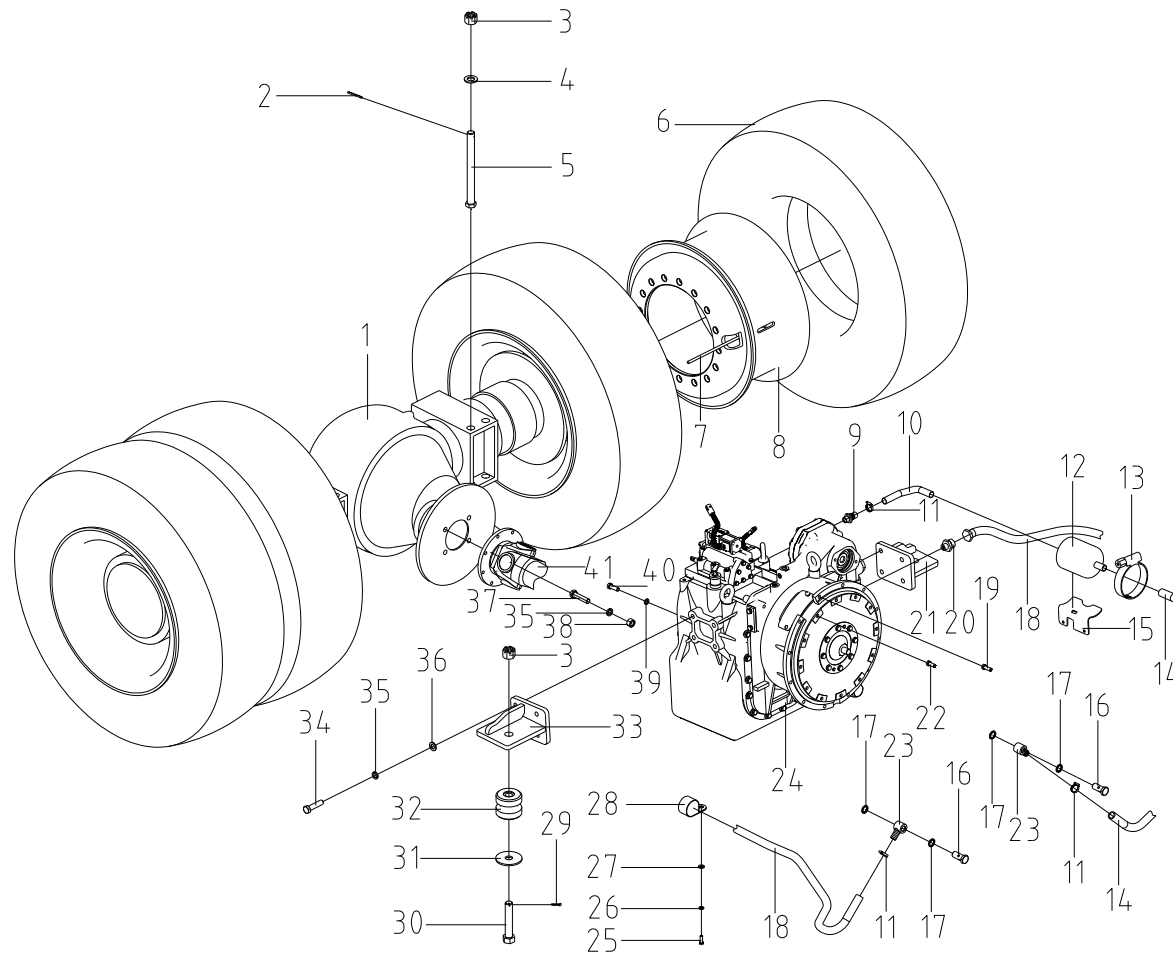


图 1/Fig.1 传动系统/Driving system

序号 tem	物料码 Part No.	名称	Description	数量 Qty	日期 Date	备注或适用车型 Remarks or Serial No.
1	AX1600-110000-G00	驱动桥总成	Drive axle	1		
2	G000091-005040-00	销 5×40	Pin 5×40	8		
3	G006178-000024-00	螺母 M24	Nut M24	10		
4	G0097P1-000024-00	垫圈 24	Washer 24	8		
5	AX1600-100001-000	螺栓	Bolt	8		16t
	GX160-100003-000	螺栓	Bolt	8		14t
6	GT02982-000122020-00	轮胎 12.00-20-20PR	Tyre 12.00-20-20PR	4		16t
	GX140-100001-G00	轮胎 11.00-20-18PR	Tyre 11.00-20-18PR	4		14t
7	50CDA-210001	气门接长管	Pipe	2		
8	GX160-100200-001	轮辋总成	Wheel rim assy	4		16t
	GX140-100100-001	轮辋总成	Wheel rim assy	4		14t
9	80DH-740001	直通管接头	Connector assy	1		
10	GA1000-130002-W00	低压胶管	Low pressure hose	1		
11	XR700-130200-000	蜗杆传动式软管环箍	Clamp	3		
12	XR700-130100-000	回油滤清器	Return filter	1		
13	Q676-120-G00	蜗杆传动式软管环箍 120	Clamp120	1		
14	AX1600-130200-000	变矩器输油管 2	Rubber pipe2	1		
15	AX1600-130001-000	支架	Support	1		
16	GA711-130001-000	铰接螺栓	Bolt	2		
17	J000982-000020-00	垫圈 20	Washer 20	4		
18	AX1600-130100-000	变矩器输油管 1	Rubber pipe1	1		
19	G005783-010030-00	螺栓 M10×30	Bolt M10×30	12		
20	XR1200-130300-000	接头	Connector assy	1		
21	AX1600-142000-000	变速箱右支架	Transmission support	1		
22	G005783-010025-00	螺栓 M10×25	Bolt M10×25	12		
23	GA711-130002-000	接头体	Connector assy	2		
24	AX1600-120000-G00	液力变速箱	Transmission	1		
25	G005781-008025-00	螺栓 M8×25	Bolt M8×25	4		
26	G000093-000008-00	垫圈 8	Washer 8	4		
27	G0097P1-000008-00	垫圈 8	Washer 8	4		
28	GR1001-120003-000	管夹	Pipe clamp	3		
29	G000091-005045-00	销 5×45	Pin 5×45	2		
30	H510-100002-000	螺栓	Bolt	2		
31	GR501-104000-000	垫片	Shim	2		
32	CB-2204-2-G00	减振垫组合	Anti-vibration pad	2		

图2 驱动桥
Fig.2 Drive axle

A#CPCD160-AXG90 B#CPCD140-AXG90 C#CPCD160-AXG83 D#CPCD140-AXG83

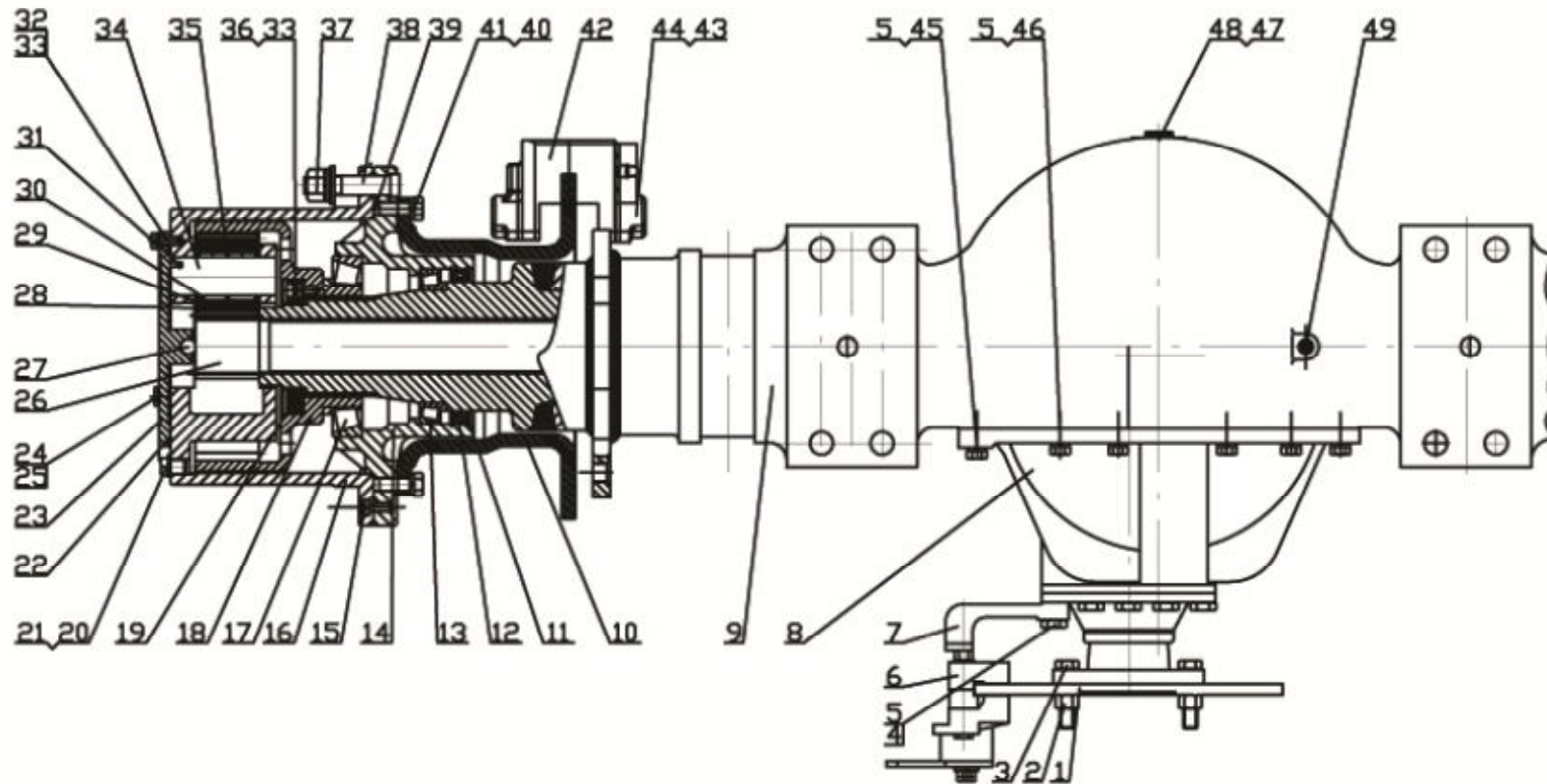


图 2/Fig.2 驱动桥/Drive axle

序号 tem	物料码 Part No.	名称	Description	数量 Qty	日期 Date	备注或适用车型 Remarks or Serial No.
1	PR105-25KS-1	制动盘	Brake disc	1		
2	GB/T6171-2000	螺母 M16×1.5	Nut M16×1.5	4		
3	GB/T5786-86	螺栓 M16×1.5×60	Bolt M16×1.5×60	4		
4	GB/T5783-86	螺栓 M14×1.5×60	Bolt M14×1.5×60	3		
5	GB/T93-1987	垫圈 14	Washer 14	17		
6	SC301-124000-G00	手制动器	Hand brake	1		
7	PR105-22D-3	制动器支架	Brake support	1		
8	2402N24-010-4	主减速器总成	Main reducer assembly	1		
9	PR105-22D-1	桥壳总成	Housing,driving axle			
10	PR105-22D-1	制动盘	Brake disc	2		
11	GB/T893.2-86	孔用挡圈φ180	Check ring φ180	4		
12	GB/T9877.1-88	油封 (F) B150×180×15	Oil sealing (F)	2		
13	GB/T297-94	轴承 32926	Bearing 32926	2		
14	PR105-22A-1	轮毂	Hub	2		
15	GB/T70-85	内六角螺栓 M10×20	Bolt M10×20	16		
16	PR105-22A-2	行星轮架	Carrier-pinion gear	2		
17	GB/T297-94	轴承 32028	Bearing 32028	2		
18	PR105-22-1	内齿轮	Gear	2		
19	PR105-22-6	圆螺母	Nut	2		
20	JB982-77	组合垫圈 18	Washer 18	2		
21	FYQ-1	螺塞 M18×1.5	Plug M18×1.5	2		
22	GB/T3452.1-82	O 形圈 φ212×5.3	O-ring φ212×5.3	2		
23	PR105-22-9	轮边端盖	End cover	2		
24	FYQ-6	螺塞 M14×1.5	Plug M14×1.5	2		
25	JB982-77	组合垫圈 14	Washer 14	2		
26	PR105-22D-6	齿轮半轴	Shaft	2		
27	GB/T308-84	钢球"φ11/16"	Molten steel φ11/16"	2		
28	PR105-22-2	行星齿轮	Gear-pinion	8		
29	ZL60-06-14	行星轮垫片	Gasket	16		
30	GB/T309-84	滚针 5×30	Roller 5×30	496		
31	GB/T308-84	钢球φ3/8"	Molten steel φ3/8"	8		
32	GB/T5786-86	螺栓 M10×25	Bolt M10×25	16		
33	GB/T93-87	弹垫 10	Washer 10	20		
34	PR105-22-10	行星轴	Shaft	8		
35	PR90-20-4-15	隔套	Spacer bush	24		

图3 主减速器总成
Fig.3 Final drive assembly

A#CPCD160-AXG90 B#CPCD140-AXG90 C#CPCD160-AXG83 D#CPCD140-AXG83

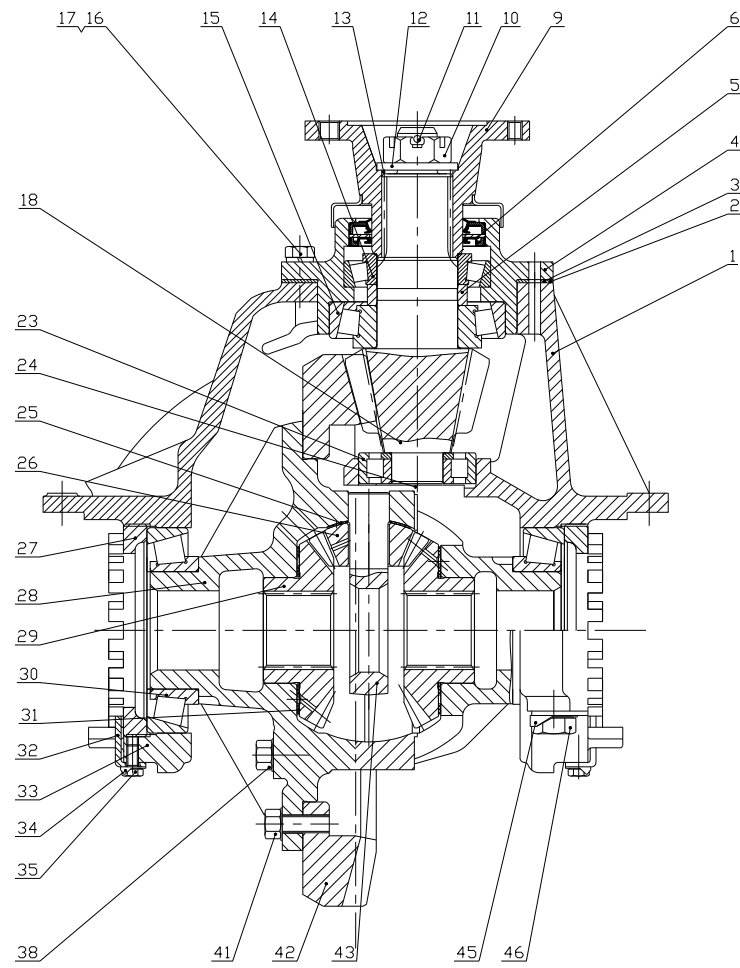


图 3/Fig.3 主减速器总成/Final drive assembly

序号 tem	物料码 Part No.	名称	Description	数量 Qty	日期 Date	备注或适用车型 Remarks or Serial No.
1	2402N-115	主减速器壳	Final Drive case	1		
2	2402N-081-082	调整垫片	Washer	1 组		
3	2402N-083-088	分割调整垫片	Washer	AR		
4	2402N-036	轴承座	Seat	1		
5	2402N-049	隔套	Spacer bush	1		
6	2402N-058	主动锥齿轮油封	Oil-ring	1		
9	2402N-065	突缘总成	Assembly	1		
10	2402N-072	六角槽形螺母	Nut	1		
11	Q500B6350	开口销	Ping	1		
12	2402N-071	平垫片	Pin	1		
13	2402N-069	O 型圈	O-ring	1		
14	27311K	前外轴承总成	Bearing-assembly	1		
15	27314EK	前内轴承总成	Bearing-assembly	1		
16	Q40514	重型弹垫	Washer	8		
17	Q151B1442	螺栓	Bolt	8		
18	2402N2-025	后桥主动锥齿轮	Final drive bevel gear	1		
23	NUP308X	后轴承总成	Bearing-assembly	1		
24	Q43135	轴用弹性挡圈	Washer	1		
25	2402N-346	支承垫圈	Washer	4		
26	2402N-345	行星齿轮	Spider gear	4		
27	2402N-381	调整螺母	Nut	2		
28	2402N-315	差速器壳总成	Sode differential	1		
29	2402N-335	半轴齿轮	Gear	2		
30	7518E	差速器轴承总成	Sode bearing	2		
31	2402N-336	支承垫圈	Washer	2		
32	2402N-383	止动片	Washer	2		
33	2402N-117	差速器轴承盖	Sode bear caver	2		
34	Q40310	弹垫	Washer	2		
35	Q150B1020-5	螺栓	Bolt	4		
38	2402F-356	螺栓	Bolt	12		
42	2402N2-026	后桥从动锥齿轮	Gear	1		
43	2402N-331	十字轴	Planetary pinion	1		
45	2402N-121	锁片	Washer	4		
46	2402N-119	螺栓	Nut	4		

图 4 制动器总成
Fig.4 Brake assembly

A#CPCD160-AXG90 B#CPCD140-AXG90 C#CPCD160-AXG83 D#CPCD140-AXG83

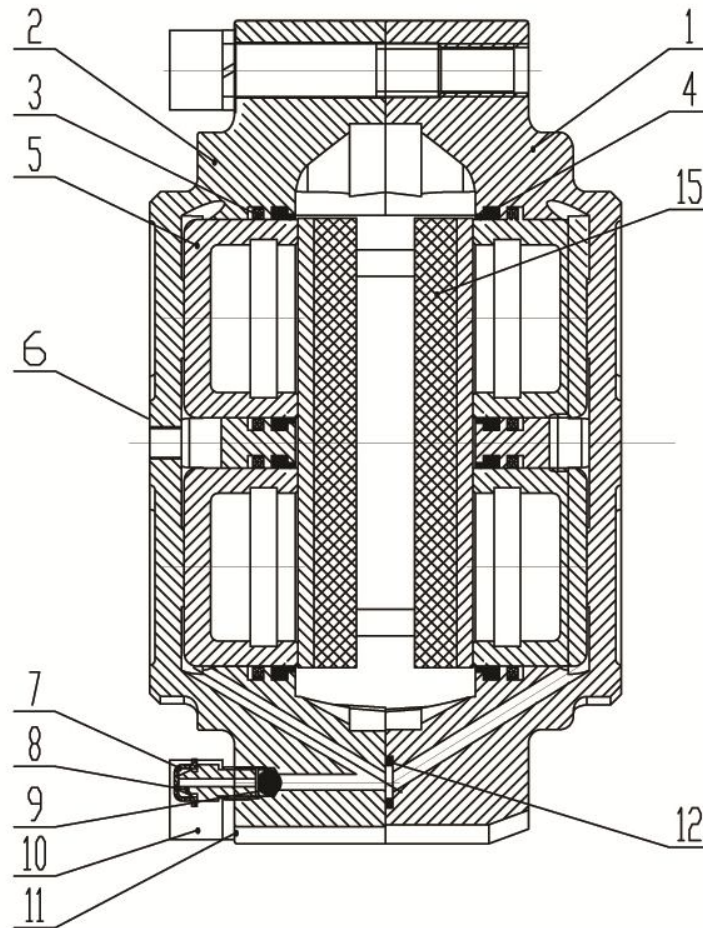


图5 变速箱(1)
Fig.5 Gearbox(1)

A#CPCD160-AXG90 B#CPCD140-AXG90 C#CPCD160-AXG83 D#CPCD140-AXG83

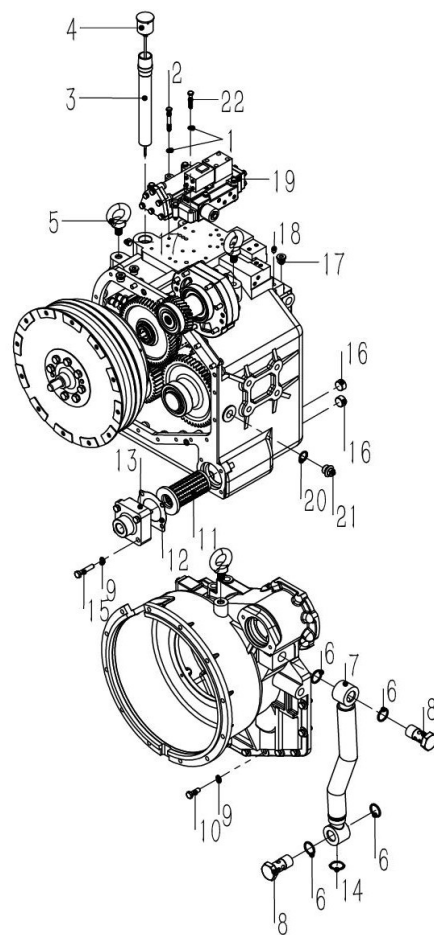


图 6 变速箱 (II)
Fig.6 Gearbox(II)

A#CPCD160-AXG90 B#CPCD140-AXG90 C#CPCD160-AXG83 D#CPCD140-AXG83

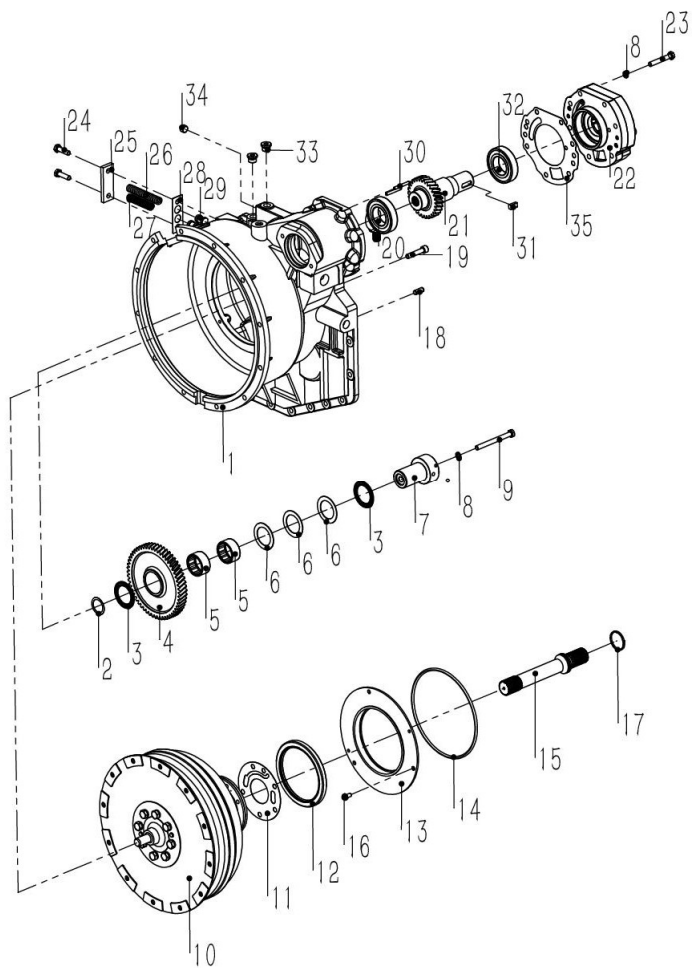


图 6/Fig.6 变速箱 (II) /Gearbox(II)

序号 tem	物料码 Part No.	名称	Description	数量 Qty	日期 Date	备注或适用车型 Remarks or Serial No.
1	YQX150-0010	变矩器壳	Case,tor-con	1		
2	YQX100-0007	垫	Adjusting pad	AR		
3	GB/T4605	滚针轴承 889109	Needle bearing 889109	2		
4	YQX100-0006	惰轮	Idler	1		
5	GB/T5846 K455325	滚针轴承	Needle bearing	2		
6	GB/T4605	止推垫圈	Thrust washer	3		
7	YQX100-0008	惰轮支架	Idler support	1		
8	GB/T93	垫圈 10	Washer 10	10		
9	GB/T5785	螺栓 M10×1.25×108	Bolt M10×1.25×108	1		
10	YQX150-6000	YJH340F-3 液力变矩器	Torque converter	1		
11	YQX100-0041	导轮座密封垫	Seal washer	1		
12	YQX100-0100	油封 TC130×160×14	Oil sealing TC130×160×14	1		
13	YQX100A-0009	支承板	Plate,support	1		
14	YQX100-0011	O 型密封圈	O-ring	1		
15	YQX135-0013	涡轮轴	Turbine shaft	1		
16	GB/T5783	螺栓 M8×15	Bolt M8×15	3		
17	YQX100-0012	密封环	Ring,seal	1		
18	GB/T119	圆柱销 A10×25	Round pin A10×25	2		
19	GB/T70	螺钉 M10×50	Screw M10×50	6		
20	GB/T276	轴承 6209/P5	Bearing 6209/P5	1		
21	YQX150-0005	油泵驱动齿轮	Oil pump drive gear	1		
22	YQX100-3000	油泵总成	Oil pump assy	1		
23	GB/T5785	螺栓 M10×1.25×65	Bolt M10×1.25×65	7		
24	GB/T5785	螺栓 M10×1.25×35	Bolt M10×1.25×35	2		
25	YQX100-0027	盖	Cover	1		
26	YQX100-0029	弹簧	Spring	1		
27	YQX100-0030	弹簧	Spring	1		
28	YQX100-0028	密封垫	Seal washer	1		
29	YQX100-0026	活塞	Piston	2		
30	YQX100-0031	销子	Pin	2		
31	YQX100-0003	键	Key	1		
32	GB/T276	轴承 6209RS/P5	Bearing 6209RS/P5	1		
33	OM18	螺塞 18×1.5	Plug 18×1.5	2		
34	YQX100-0025	螺塞	Plug	1		
35	YQX100-0004	密封垫	Seal washer	1		

图 7 变速箱 (III)
Fig.7 Gearbox(III)

A#CPCD160-AXG90 B#CPCD140-AXG90 C#CPCD160-AXG83 D#CPCD140-AXG83

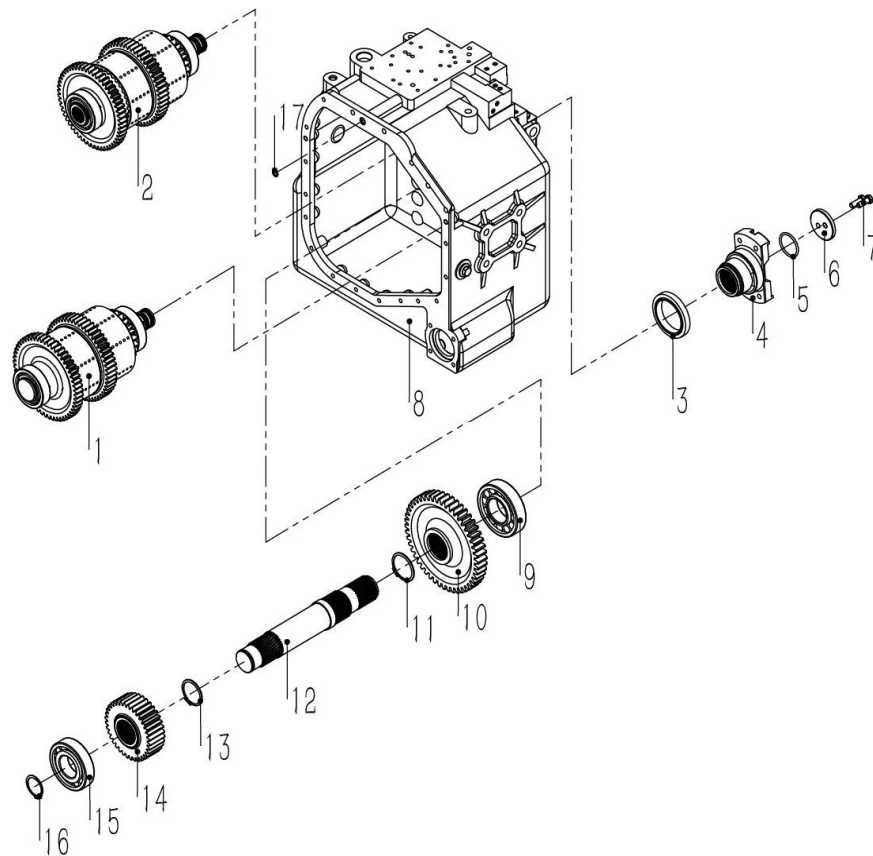


图 8 控制阀总成
Fig.8 Control valve assembly

A#CPCD160-AXG90 B#CPCD140-AXG90 C#CPCD160-AXG83 D#CPCD140-AXG83

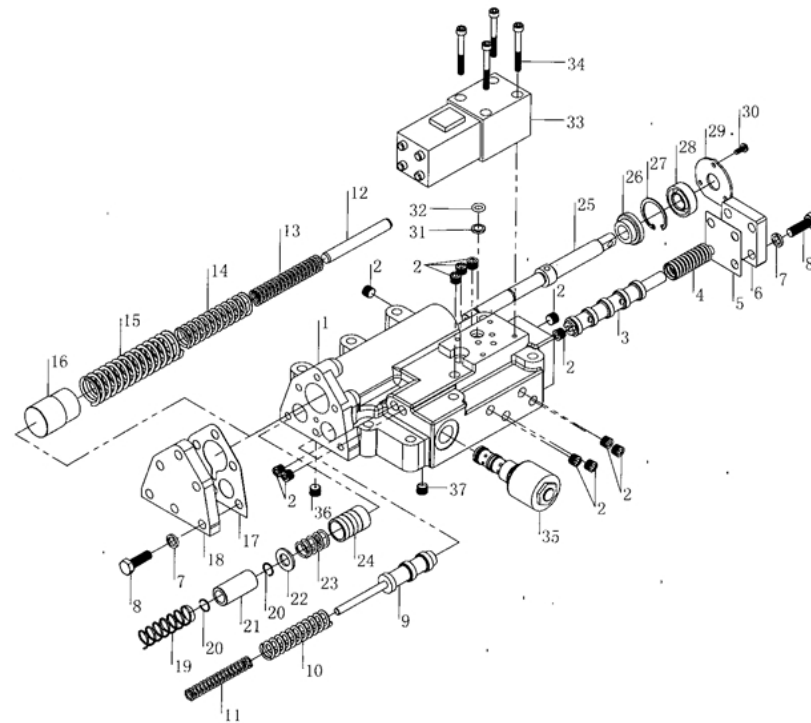
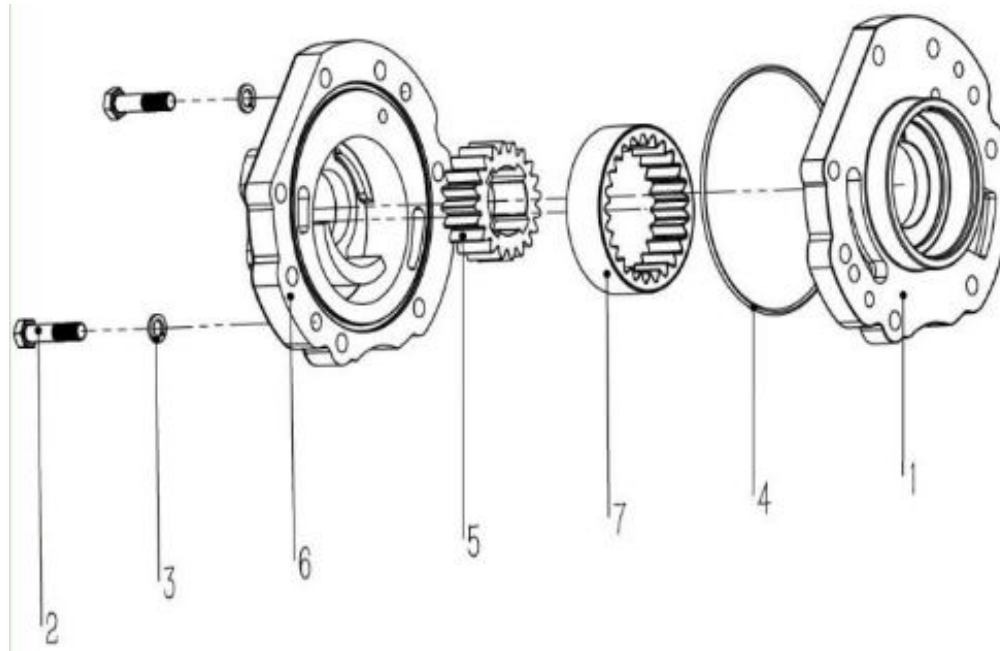


图 8/Fig.8 控制阀总成/Control valve assembly

序号 tem	物料码 Part No.	名称	Description	数量 Qty	日期 Date	备注或适用车型 Remarks or Serial No.
1	YQXD100C-4101	阀体	Calve body	1		
2	Q/ZB285-77	螺堵 (ZG1/8)	Plug	12		
3	YQXD100-4106	活塞	Piston	1		
4	YQXD100-4107	弹簧	Spring	1		
5	YQXD100C-4105	衬垫 I	Gasket I	1		
6	YQXD100C-4104	盖 I	Cover I	1		
7	GB93-87	弹簧垫圈 8	Washer 8	10		
8	GB5783-86	螺栓 M8×25	Bolt M8×25	10		
9	YQX100-4014	微动阀芯	Inching valve core	1		
10	YQX100-4015	弹簧	Spring	1		
11	YQX100-4016	弹簧	Spring	1		
12	GB119.2-2000	销 10×80	Pin 10×80	1		
13	YQX100-4024	弹簧	Spring	1		
14	YQX100-4026	弹簧	Spring	1		
15	YQX100-4022	弹簧	Spring	1		
16	YQX100-4023	活塞	Piston	1		
17	YQXD100-4019	衬垫 II	Gasket II	1		
18	YQXD100-4018	盖 II	Cover II	1		
19	YQXD100C-4118	弹簧	Spring	1		
20	GB895.2-86	钢丝挡圈 12	The wire ring 12	2		
21	YQX100-4004	活塞	Piston	1		
22	YQX100-4005	隔垫	Septum	1		
23	YQX100-4007	弹簧	Spring	1		
24	YQX100-4006	柱塞	Plunger	1		
25	YQX100-4003	微动阀杆	Micro valve stem	1		
26	YQX100-4008	垫环	Cushion ring	1		
27	GB893.1-86	挡圈 30	Ring 30	1		
28	HG4-692-67	油封	Oil seal	1		
29	YQXD100-4118	压盖	Gland	1		
30	GB67-2000	螺钉 M4×10	Screw M4×10	3		
31	YQXD100C-4119	滤网	Filter net	1		
32	GB1235-76	O形密封圈	O-ring 12×2.4	1		
33	YQXD110-4100	电磁换向阀	Electromagnetic shifting	1		
34	GB70-85	螺钉 M5×45	Screw M5×45	4		
35	YQXD100A-4310	电磁档位阀	Electromagnetic gear valve	1		

图 9 油泵总成
Fig.9 Oil pump assy

A#CPCD160-AXG90 B#CPCD140-AXG90 C#CPCD160-AXG83 D#CPCD140-AXG83



第二部分 转向系统
Part II Steering system

A#CPCD160-AXG90

B#CPCD140-AXG90

C#CPCD160-AXG83

D#CPCD140-AXG83

序号 Item	名称 Description	适用车型 Serial No.	页码 Page
图 1 Fig. 1	转向装置 Steering device	A#C#	2-1
图 1-1 Fig. 1-1	转向装置 Steering device	B#D#	2-3
图 2 Fig. 2	转向管装置 Steering pipe device	A#C#	2-5
图 3 Fig. 3	转向桥 Steering axle	A#B#C#D#	2-7
图 4 Fig. 4	转向油缸 Steering cylinder	A#B#C#D#	2-10

图 1 转向装置
Fig.1 Steering device

A#CPCD160-AXG90 C#CPCD160-AXG83

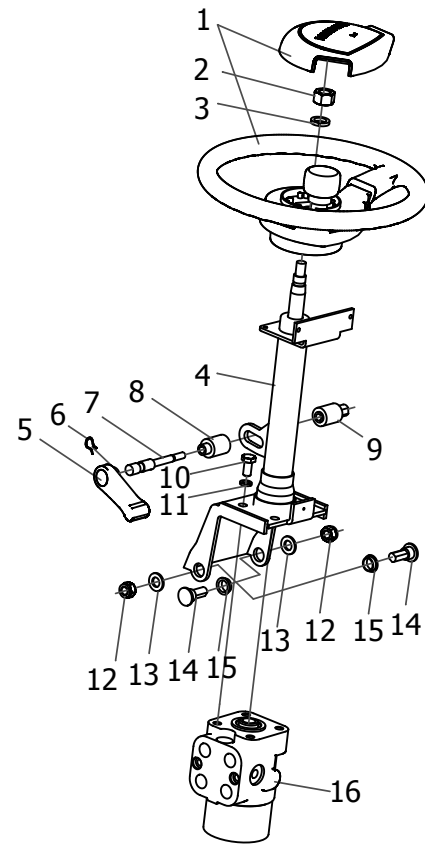


图 1-1 转向装置
Fig.1-1 Steering device

B#CPCD140-AXG90 D#CPCD140-AXG83

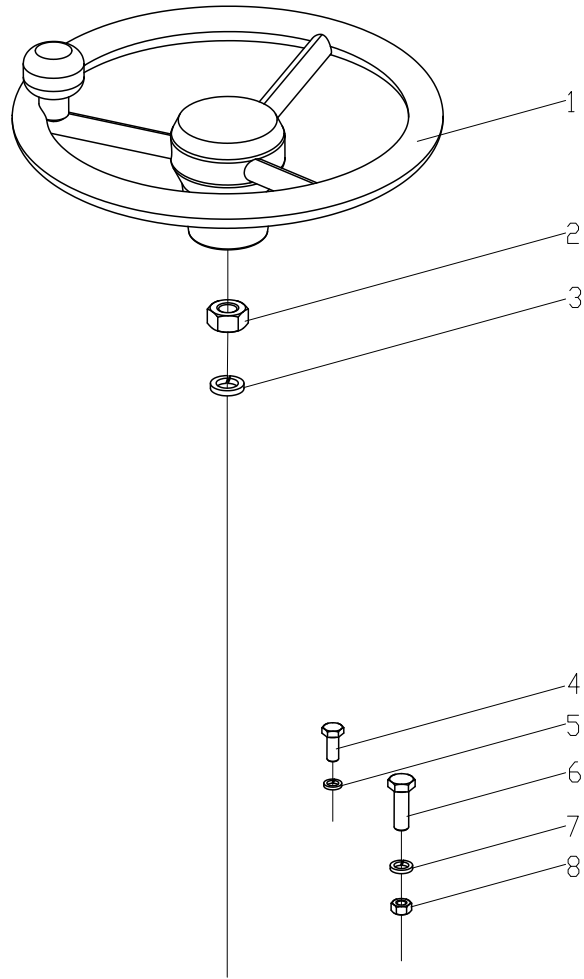


图 2 转向管装置
Fig.2 Steering pipe device

A#CPCD160-AXG90 C#CPCD160-AXG83

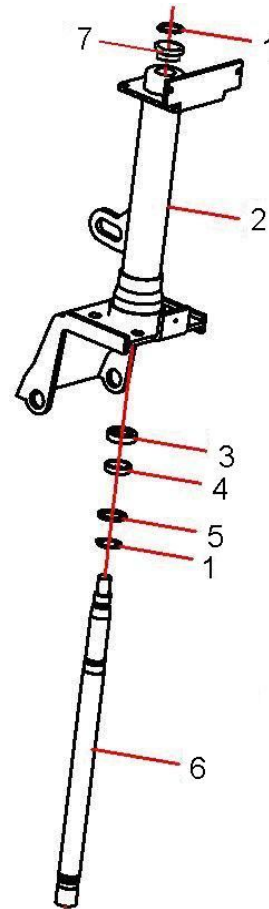


图3 转向桥
Fig.3 Steering axle

A#CPCD160-AXG90 B#CPCD140-AXG90 C#CPCD160-AXG83 D#CPCD140-AXG83

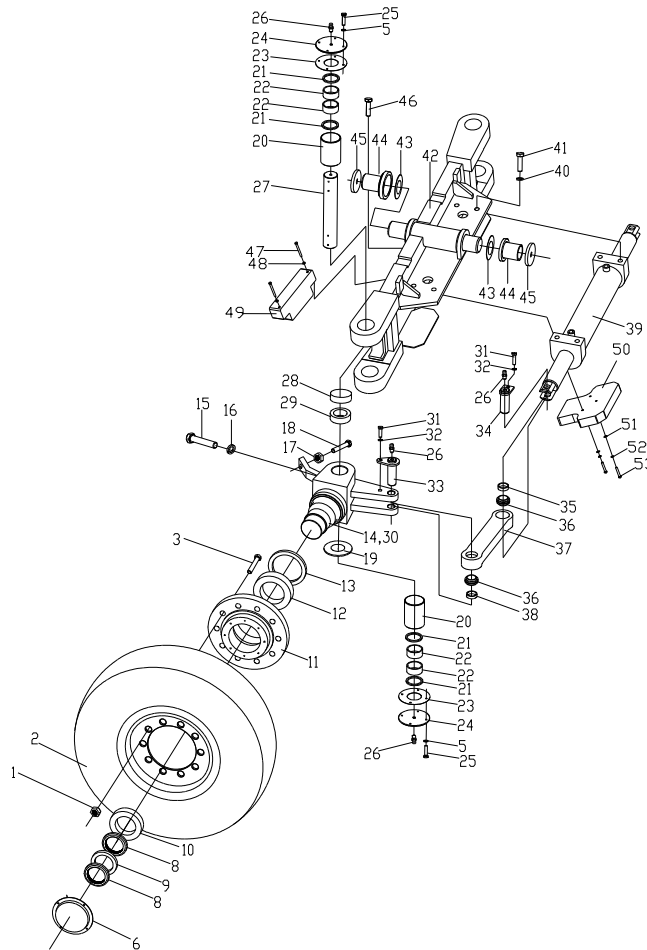
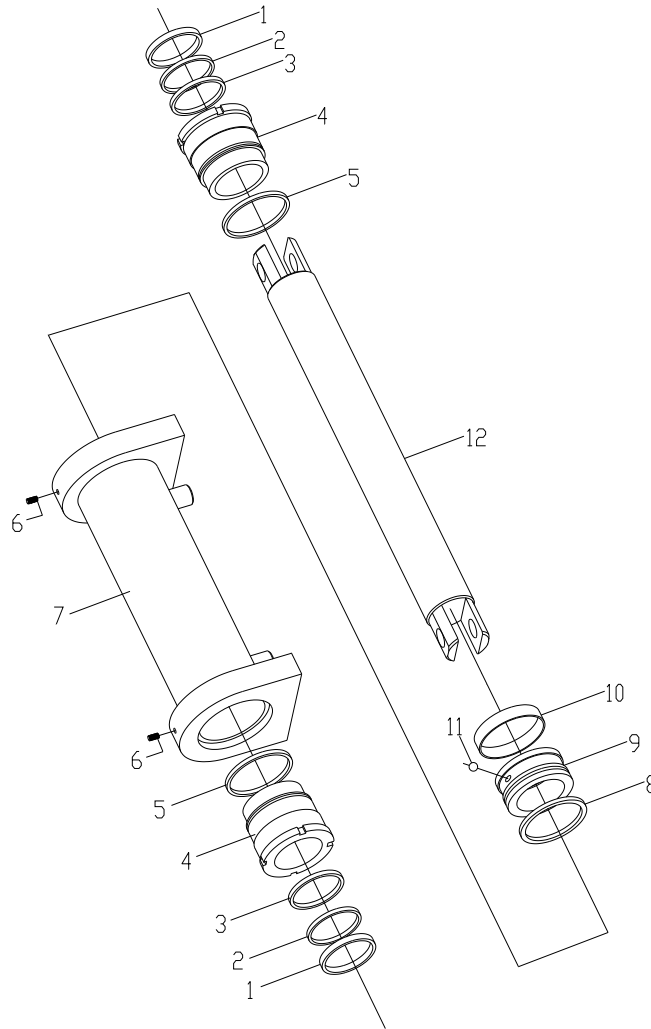


图 3/Fig.3 转向桥/Steering axle

序号 tem	物料码 Part No.	名称	Description	数量 Qty	日期 Date	备注或适用车型 Remarks or Serial No.
1	G160-220001-000	球形螺母	Nut	20		
2	G160-221000-000	转向轮胎总成	Steering tyre assembly	2		
	GT02982-000122020-00	轮胎 12.00-20-20PR	Tyre 12.00-20-20PR	1		
	G160-221001-G00	轮胎	Tyre	1		实心胎选配 Airless tires optional
	G160-221100-000	轮辋总成	Wheel rim assy	1		
3	G160-220002-000	联接螺栓	Bolt	20		
5	G000093-000006-00	垫圈 6	Washer 6	16		
6	GXR1600-220003-000	端盖	End cover	2		
8	G000812-000100-02	螺母 M100×2	Nut M100×2	4		
9	G000858-000100-00	垫圈 100	Washer 100	2		
10	GT00297-0032022-00	轴承 32022	Bearing	2		
11	GXR1600-220001-000	转向轮毂	Steering hub	2		
12	GT00297-0032026-00	轴承 32026	Bearing	2		
13	HG40692-160020016-01	油封 SD160×200×16	Oil seal	2		
14	GX160-221000-000	左转向节	Left steering knuckle	1		
15	G160-220020-001	固定螺钉	Screw	2		
16	G000093-000014-00	垫圈 14	Washer 14	2		
17	G006171-000016-02	螺母 M16×1.5	Nut M16×1.5	2		
18	G005786-016060-01	螺栓 M16×1.5×60	Bolt M16×1.5×60	2		
19	G160-220014-000	调整垫片	Adjust shim	2		
20	GX160-220002-000	钢套	Sleeve	4		
21	GX160-220001-000	密封胶圈	Seal ring	6		
22	JT07918-0708030-00	轴承 K708030	Bearing	8		
23	G160-220022-000	垫板	Plate	4		
24	G160-220006-001	盖板	Cover plate	4		
25	G005783-006016-00	螺栓 M6×16	Bolt M6×16	16		
26	G001153-010001-00	油杯 45°M10×1	Grease cup	10		
27	GX160-220007-000	主销	Pin	2		
28	G160-220009-000	防尘套	Dust sleeve	2		
29	GT00301-0051314-00	轴承 51314	Bearing	2		
30	GX160-222000-000	右转向节	Right steering knuckle	1		
31	G005783-010020-00	螺栓 M10×20	Bolt M10×20	2		
32	G000093-000010-00	垫圈 10	Washer 10	2		
33	G160-227000-000	销轴 II	Pin shaft II	2		
34	G160-225000-000	销轴 I	Pin shaft I	2		

图 4 转向油缸
Fig.4 Steering cylinder

A#CPCD160-AXG90 B#CPCD140-AXG90 C#CPCD160-AXG83 D#CPCD140-AXG83



第三部分 动力系统
Part III Driver system

A#CPCD160-AXG90

B#CPCD140-AXG90

C#CPCD160-AXG83

D#CPCD140-AXG83

序号 Item	名称 Description	适用车型 Serial No.	页码 Page
图 1 Fig.1	动力系统 Driver system	A#B#C#D#	3-1
图 2 Fig.2	进气系统 Air inlet system	A#B#C#D#	3-3
图 3-1 Fig.3-1	后处理系统 Post-processing system	A#B#	3-5
图 3-1-1 Fig.3-1-1	SCR 总成 SCR assembly	A#B#	3-8
图 3-1-2 Fig.3-1-2	DOC+DPF 总成 DOC + DPF assembly	A#B#	3-10
图 3-2 Fig.3-2	排气系统 Exhaust system	C#D#	3-12
图 4 Fig.4	冷却系统 Cooling system	A#B#C#D#	3-14
图 5 Fig.5	燃油系统 Fuel system	A#B#C#D#	3-16
图 6 Fig.6	发动机安装 Engine mount	A#B#C#D#	3-18

图 1 动力系统
Fig.1 Power system

A#CPCD160-AXG90 B#CPCD140-AXG90 C#CPCD160-AXG83 D#CPCD140-AXG83

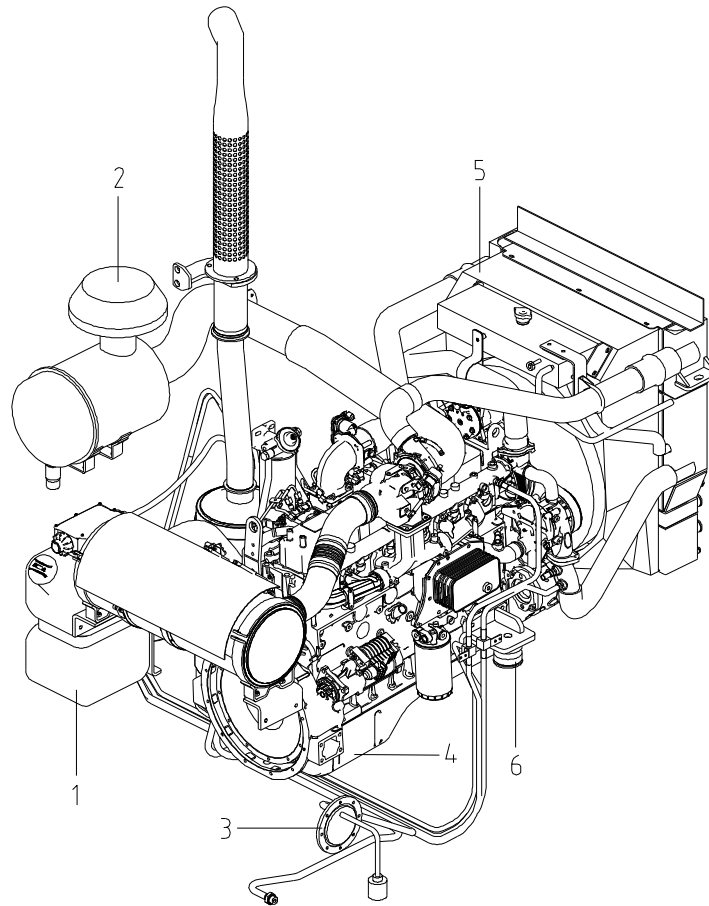


图2 进气系统
Fig.2 Air inlet system

A#CPCD160-AXG90 B#CPCD140-AXG90 C#CPCD160-AXG83 D#CPCD140-AXG83

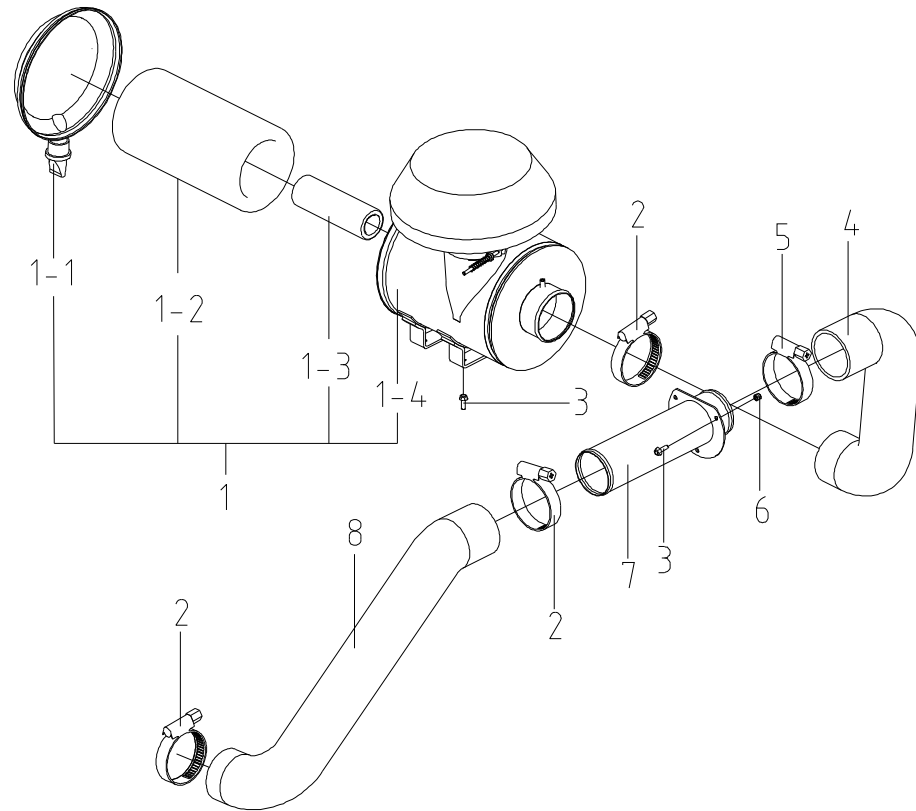


图 3-1 后处理系统
Fig.3-1 Post-processing system

A#CPCD160-AXG90 B#CPCD140-AXG90

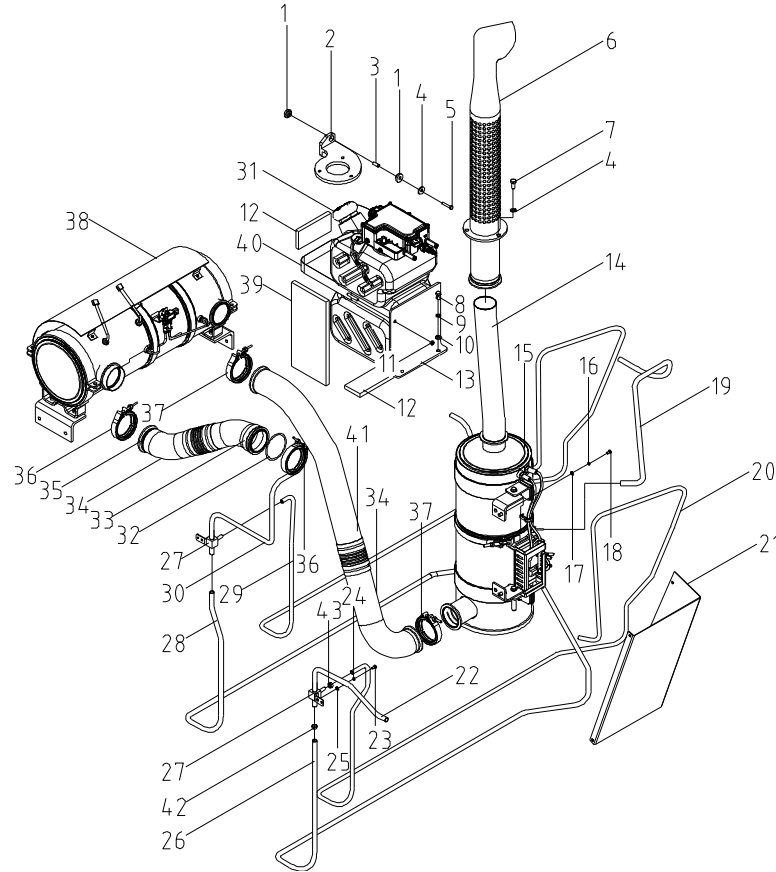


图 3-1/ Fig.3-1 后处理系统/Post-processing system

序号 tem	物料码 Part No.	名称	Description	数量 Qty	日期 Date	备注或适用车型 Remarks or Serial No.
1	R453-320001-000	减振垫	Damping pad	4		
2	AX1600-328000-000	高位排气安装支座	Installing mount	1		
3	R453-320002-000	套管	Casing	2		
4	G000096-000010-00	垫圈 10	Washer 10	7		
5	G005787-010030-00	螺栓 M10×30	Bolt M10×30	2		
6	XR1200-324000-000	高位排气管	High exhaust pipe	1		
7	G000070-010030-00	螺钉 M10×30	Screw M10×30	3		
8	G005780-012045-00	螺栓 M12×45	Bolt M12×45	2		
9	G000093-000012-00	垫圈 12	Washer 12	2		
10	G0097P1-000012-00	垫圈 12	Washer 12	2		
11	G006170-000008-00	螺母 M8	Nut M8	2		
12	AX1600-320009-W00	防撞海绵 1	Anti-collision sponge 1	2		
13	AX1600-326001-000	尿素罐安装座	Mounting base	1		
14	AX1600-323000-000	排气尾管	Tailpipe	1		
15	AX1600-325000-000	SCR 总成	SCR assembly	1		
16	G000093-000010-00	垫圈 10	Washer 10	8		
17	G0097P1-000010-00	垫圈 10	Washer 10	8		
18	G005781-010035-00	螺栓 M10×35	Bolt M10×35	4		
19	AX1600-320001-000	尿素管	Urea pipe	1		
20	AX1600-320007-W00	回水胶管 (内径φ10)	Backwater hoseφ10	1		
21	AX1600-320008-000	护罩	Shield	1		
22	AX1600-320005-W00	回水胶管 (内径φ14)	Backwater hoseφ14	1		
23	G005781-006012-00	螺栓 M6×12	Bolt M6×12	4		
24	G000093-000006-00	垫圈 6	Washer 6	4		
25	G0097P1-000006-00	垫圈 6	Washer 6	4		
26	AX1600-320006-W00	回水胶管 (内径φ14)	Backwater hoseφ14	1		
27	GXRX1600-320100-000	三通接头	Tee joint	2		
28	AX1600-320004-W00	输水胶管 (内径φ14)	Water delivery hoseφ14	1		
29	AX1600-320003-W00	输水胶管 (内径φ10)	Water delivery hoseφ10	1		
30	AX1600-320002-W00	输水胶管 (内径φ14)	Water delivery hoseφ14	1		
31	AX1600-326003-G00	尿素罐	Urea tank	1		
32	GXRX1600-320014-G00	催化消声器垫片	Shim	5		
33	G250-315000-G00	T形抱箍 119	T-shaped hoop 119	5		
34	G250-320100-000	隔热套	Heat insulation sleeve	3		
35	AX1600-321000-000	排气管	Exhaust pipe	1		

图 3-1-1 SCR 总成
Fig.3-1-1 SCR assembly

A#CPCD160-AXG90 B#CPCD140-AXG90

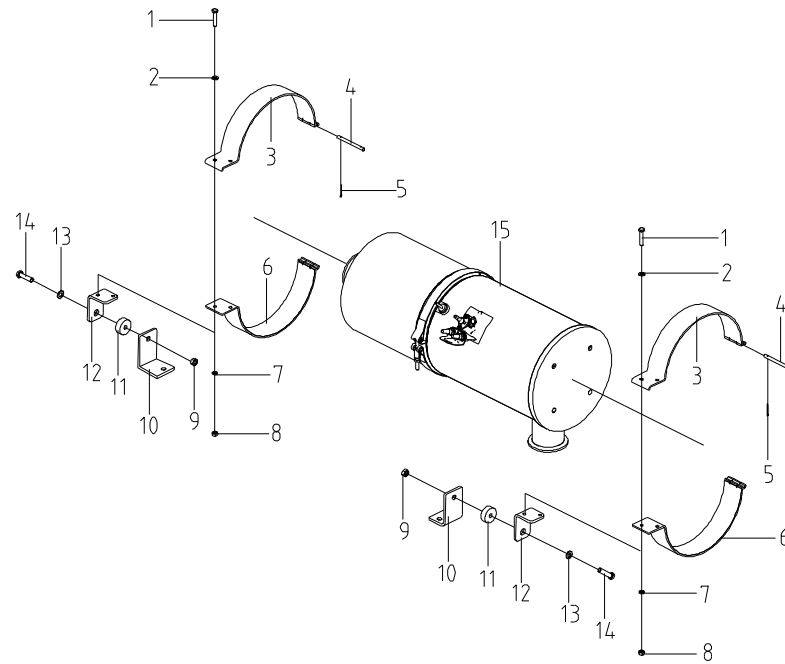


图 3-1-2 DOC+DPF 总成
Fig.3-1-2 DOC + DPF assembly

A#CPCD160-AXG90 B#CPCD140-AXG90

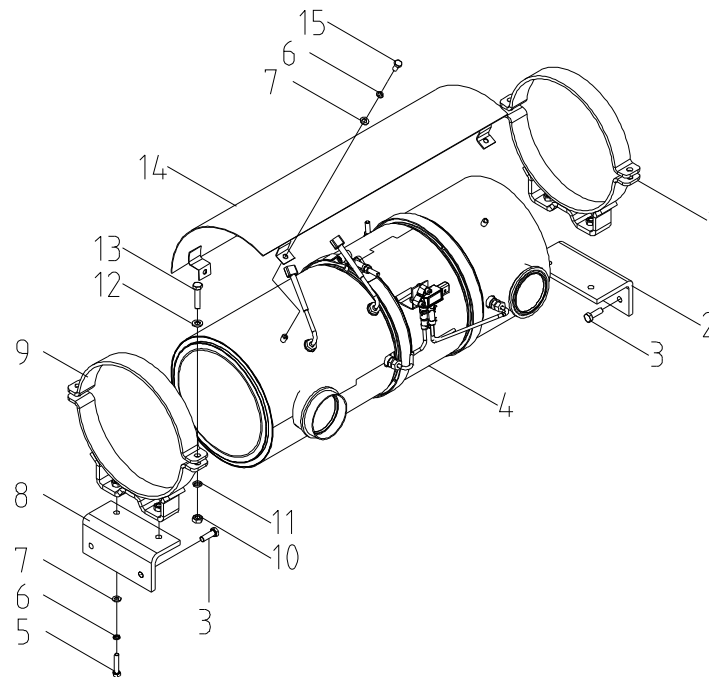


图 3-2 排气系统
Fig.3-2 Exhaust system

C#CPCD160-AXG83 D#CPCD140-AXG83

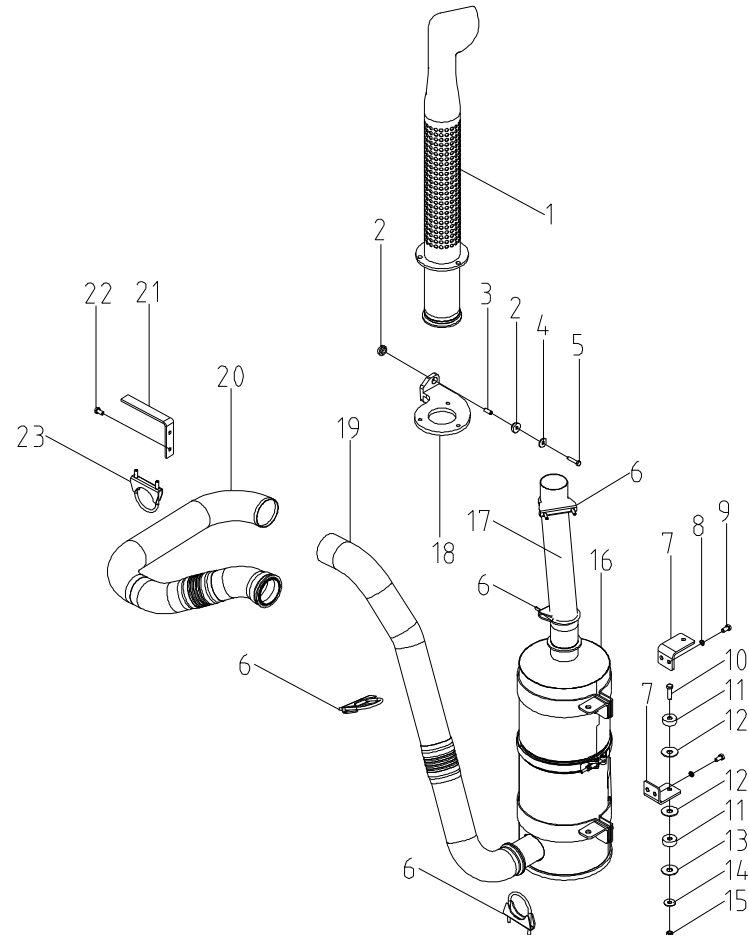


图 4 冷却系统
Fig.4 Cooling system

A#CPCD160-AXG90 B#CPCD140-AXG90 C#CPCD160-AXG83 D#CPCD140-AXG83

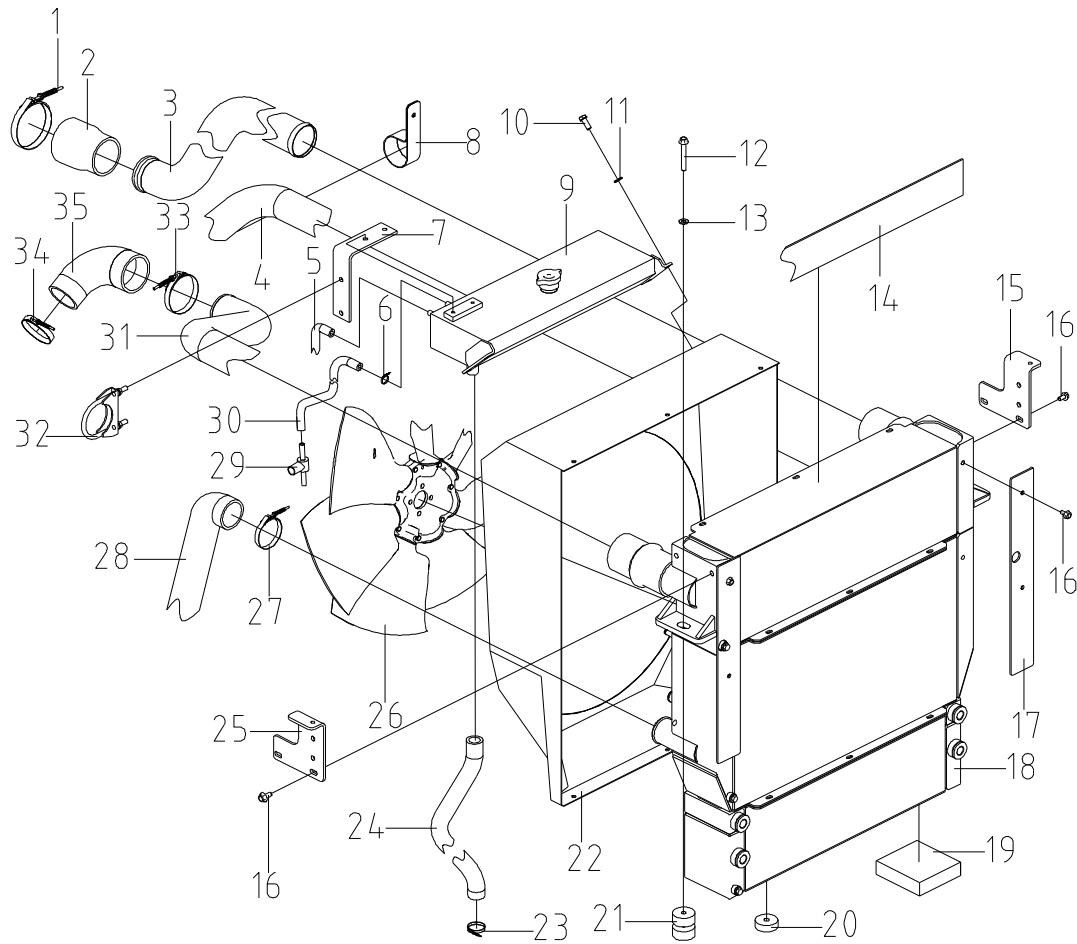


图 4/Fig.4 冷却系统/Cooling system

序号 tem	物料码 Part No.	名称	Description	数量 Qty	日期 Date	备注或适用车型 Remarks or Serial No.
1	GXRX1600-330002-000	T型抱箍 104.8	T-clamp 104.8	1		
2	AX1600-330015-000	变径胶管	Reducing hose	1		
3	AX1600-330006-000	中冷器出气管	Pipe for air outlet	1		
4	AX1600-330010-000	发动机出水管	Pipe for water outlet	1		
5	AX1600-330005-W00	除气胶管 $\phi 10 \times \phi 18$	Hose $\phi 10 \times \phi 18$	1		
6	Q672-19-G00	双钢丝式环箍 19	Double wire hoop 19	4		
7	AX1600-330002-000	中冷进气管托架	Bracket	1		
8	AX1600-330001-000	水管抱箍	Hoop	1		
9	AX1600-331200-000	副水箱总成	Auxiliary water tank	1		
10	G005783-010025-01	螺栓 M10 \times 25	Bolt M10 \times 25	11		
11	G0097P1-000010-00	垫圈 10	Washer 10	11		
12	G005787-010070-00	螺栓 M10 \times 70	Bolt M10 \times 70	2		
13	XR1200-330011-000	垫片	Washer	2		
14	AX1600-330009-000	顶挡风板	Windshield	1		
15	AX1600-330013-000	水箱盖板右支架	Right bracket	1		
16	G005789-008016-00	螺栓 M8 \times 16	Bolt M8 \times 16	8		
17	AX1600-330008-000	挡风板	Windshield	2		
18	AX1600-331100-000	散热器总成	Radiator	1		
19	X700-330023-000	挡风海绵	Windshield sponge	2		
20	30HB-330004-502	垫块	Cushion block	2		
21	XR1200-330200-000	减震垫总成	Shock pad	2		
22	AX1600-331300-000	护风圈总成	Shroud	1		
23	Q672-35-G00	双钢丝式环箍 35	Double wire hoop 35	2		
24	AX1600-330003-000	注水管	Pipe for fill water	1		
25	AX1600-330012-000	水箱盖板左支架	Left bracket	1		
26	XR1200-330100-G00	$\phi 630$ 吹风扇	Blower fan $\phi 630$	1		
27	Q672-70-G00	双钢丝式环箍 70	Double wire hoop 70	4		
28	AX1600-330011-000	发动机进水管	Pipe for water intake	1		
29	AX1600-330014-000	水温传感器三通接头	Tee joint	1		
30	AX1600-330004-W00	除气胶管 $\phi 10 \times \phi 18$	Hose $\phi 10 \times \phi 18$	1		
31	AX1600-330007-000	中冷器进气管	Pipe for air intake	1		
32	G168-325000-000	排气管抱箍 $\phi 76$	Hoop $\phi 76$	1		
33	GR802-330008-G00	T型卡箍 92	T-clamp 92	6		
34	R488-330006-G00	T型卡箍 74	T-clamp 74	1		
35	GX163-330005-000	变径胶管	Reducing hose	1		

图 5 燃油系统
Fig.5 Fuel system

A#CPCD160-AXG90 B#CPCD140-AXG90 C#CPCD160-AXG83 D#CPCD140-AXG83

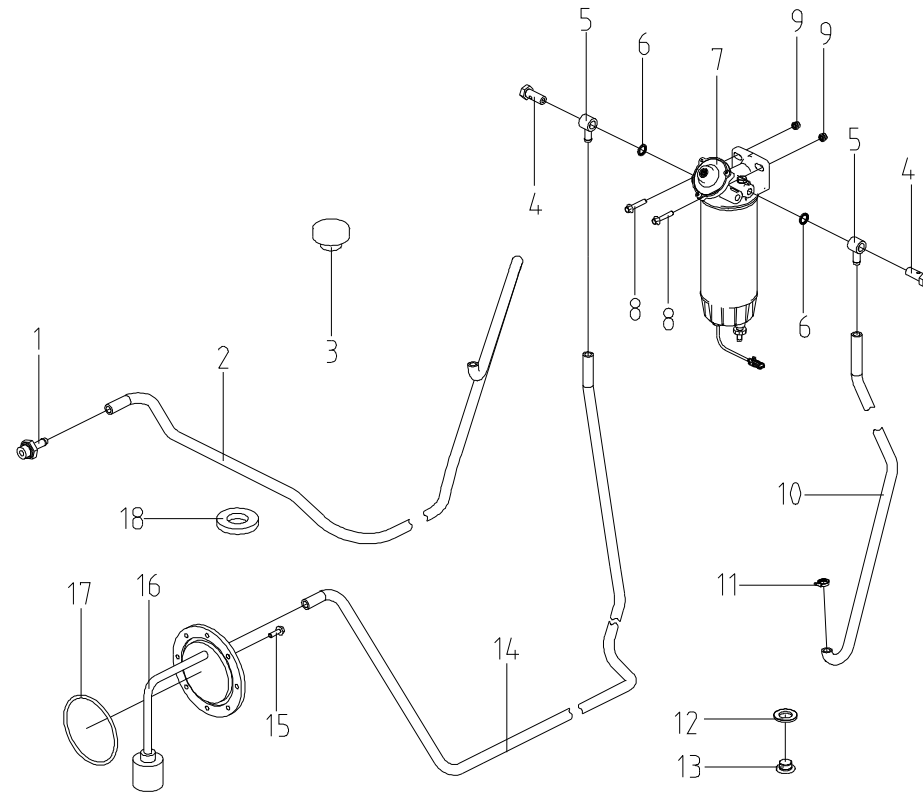
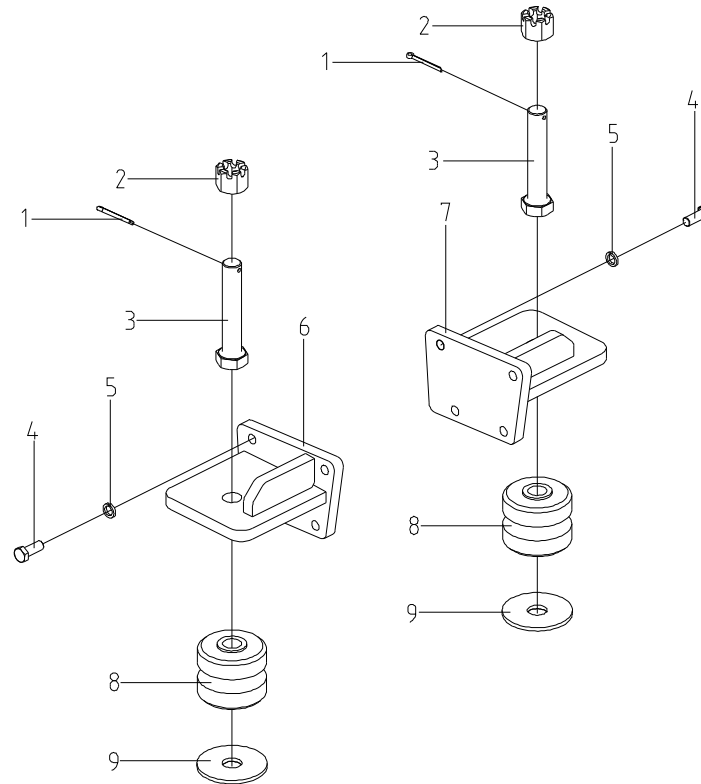


图 6 发动机安装
Fig.6 Engine mount

A#CPCD160-AXG90 B#CPCD140-AXG90 C#CPCD160-AXG83 D#CPCD140-AXG83



第四部分 车身系统
Part VI Body system

A#CPCD160-AXG90

B#CPCD140-AXG90

C#CPCD160-AXG83

D#CPCD140-AXG83

序号 Item	名称 Description	适用车型 Serial No.	页码 Page
图 1 Fig. 1	车身系统 Truck body system	A#B#C#D#	4-1
图 2 Fig.2	机罩总成及仪表架 Hood assy and instrument rack	A#B#C#D#	4-3
图 3 Fig. 3	电瓶盒总成 Battery box assy	A#B#C#D#	4-6
图 4 Fig. 4	平衡重总成 Counter balance assy	A#B#C#D#	4-8
图 5 Fig. 5	护顶架 Overhead guard	A#B#C#D#	4-10
图 6 Fig. 6	座椅总成 Seat assy	A#B#C#D#	4-12
图 7 Fig. 7	标示 Nameplate	A#B#C#D#	4-14

图 1 车身系统
Fig.1 Truck body system

A#CPCD160-AXG90 B#CPCD140-AXG90 C#CPCD160-AXG83 D#CPCD140-AXG83

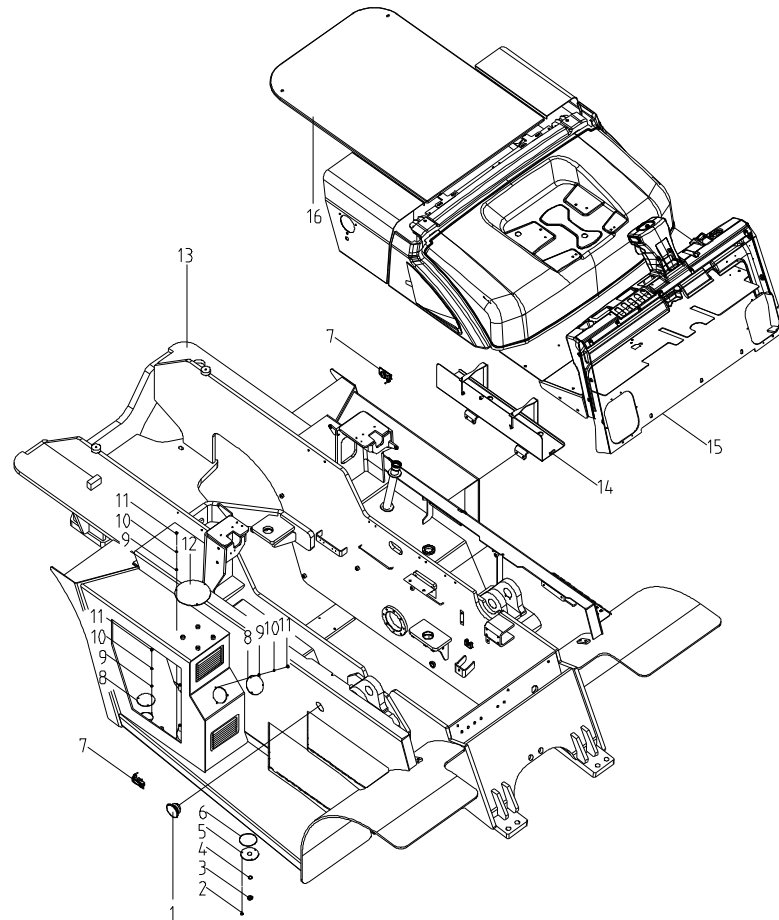


图2 机罩总成及仪表架
Fig.2 Hood assy and instrument rack

A#CPCD160-AXG90 B#CPCD140-AXG90 C#CPCD160-AXG83 D#CPCD140-AXG83

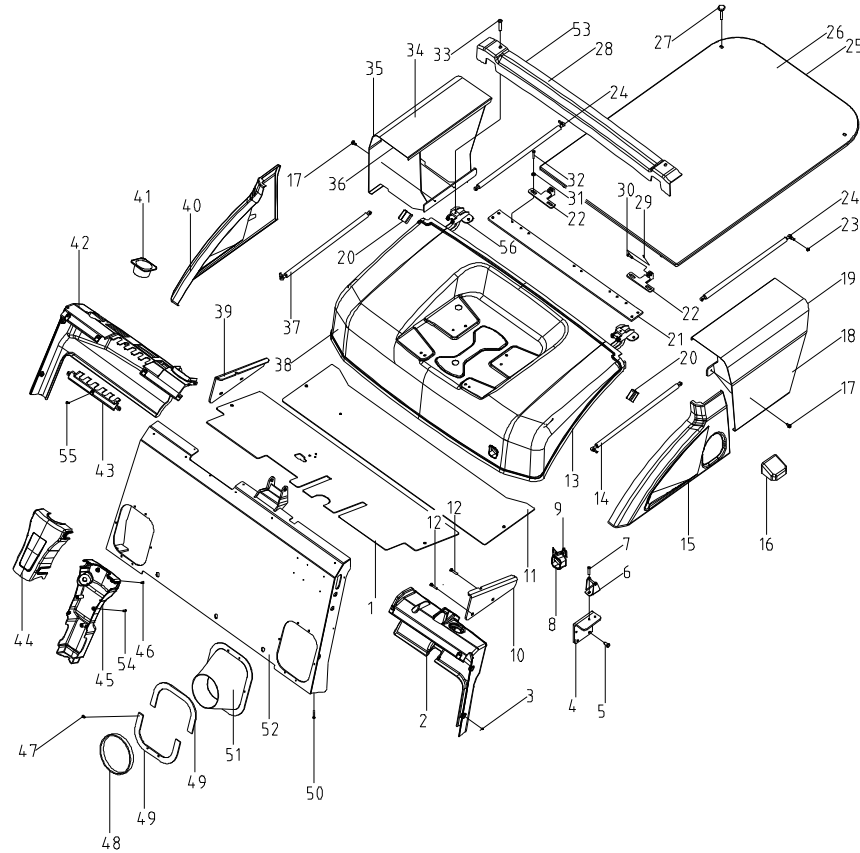


图 2/Fig.2 机罩总成及仪表架/Hood assy and instrument rack

序号 tem	物料码 Part No.	名称	Description	数量 Qty	日期 Date	备注或适用车型 Remarks or Serial No.
1	AX1600-430400-000	前底板总成	Floor board	1		
2	XR700-430501-000	左护罩	Left cover	1		
-	XR700-430505-000	左护罩	Left cover	1		装电源总开关选用
3	N163-420100-000	螺钉组件	Screw assembly	10		
4	AX1600-430001-000	底板支座	Base plate bed	1		
5	G005789-010025-00	螺栓 M10×25	Bolt M10×25	2		
6	AX1600-432100-000	锁扣底座	Lock catch pedestal	1		
7	G005789-008020-00	螺栓 M8×20	Bolt M8×20	2		
8	XF250-432100-000	锁扣	Lock catch	1		
9	X700-432001-000	锁扣罩	Lock catch cover	1		
10	AX1600-431001-000	前底板左安装座	Front floor mounting plate(left)	1		
11	AX1600-431000-000	后底板总成	Rear floor	1		
12	G005789-008020-00	螺栓 M8×20	Bolt M8×20	4		
13	XR700-433003-W00	机罩整体密封条	Hood sealing strips	1		
14	XR700-430018-G00	机罩气弹簧	Hood air spring	1		
15	XR700-436000-000	机罩左侧板总成	Hood side panel(left)	1		
16	XR310-430003-000	加油口密封块	Fueling port seal	1		
17	G005787-008035-00	螺栓 M8×35	Bolt M8×35	4		
18	AX1600-430100-000	左连接罩	Left connecting cover	1		
19	XR1000-430004-000	密封条	Sealing strips	2		
20	XR310-430002-000	支架	Support	2		
21	XR700-430300-000	横梁总成	Crossbeam assy	1		
22	AX1600-430300-000	铰链支座	Hinge support	2		
23	G006177-000008-00	螺母 M8	Nut M8	5		
24	X1000-430005-G00	水箱盖板气弹簧	Air spring	1		
25	XR1200-430011-000	水箱盖板密封条	Cover sealing strips	1		
26	XR1200-433000-000	水箱盖板组件	Cover assembly	1		
27	RC151-370001-000	把手	Handle	2		
28	AX1600-430004-000	盖板	Cover	1		
29	G000091-3P2018-00	销 3.2×18	Pin 3.2×18	4		
30	G000882-008026-01	销轴 B8×26	Pin shaft B8×26	4		
31	G005787-010025-00	螺栓 M10×25	Bolt M10×25	4		
32	G0097P1-000010-00	垫圈 10	Washer 10	4		
33	G005787-010035-00	螺栓 M10×35	Bolt M10×35	2		
34	AX1600-430200-000	右连接罩	Right connecting cover	1		

图3 电瓶盒总成
Fig.3 Battery box assy

A#CPCD160-AXG90 B#CPCD140-AXG90 C#CPCD160-AXG83 D#CPCD140-AXG83

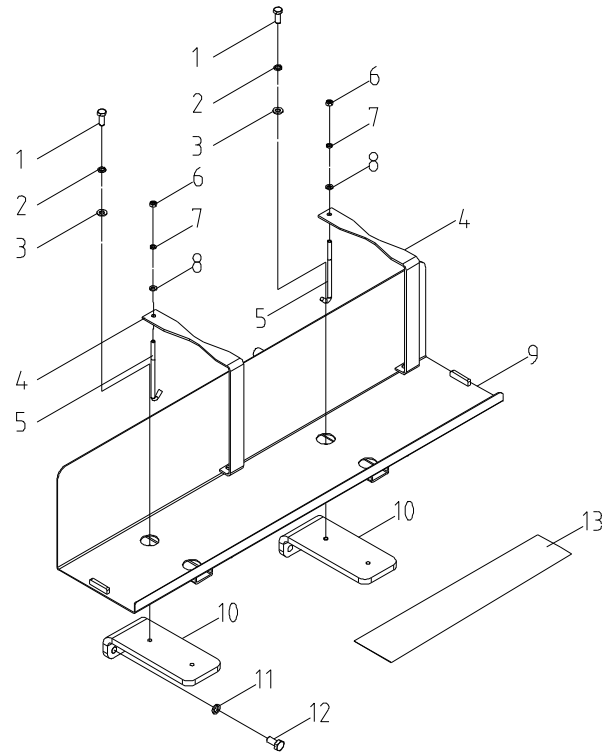


图 4 平衡重总成
Fig.4 Counter balance assy

A#CPCD160-AXG90 B#CPCD140-AXG90 C#CPCD160-AXG83 D#CPCD140-AXG83

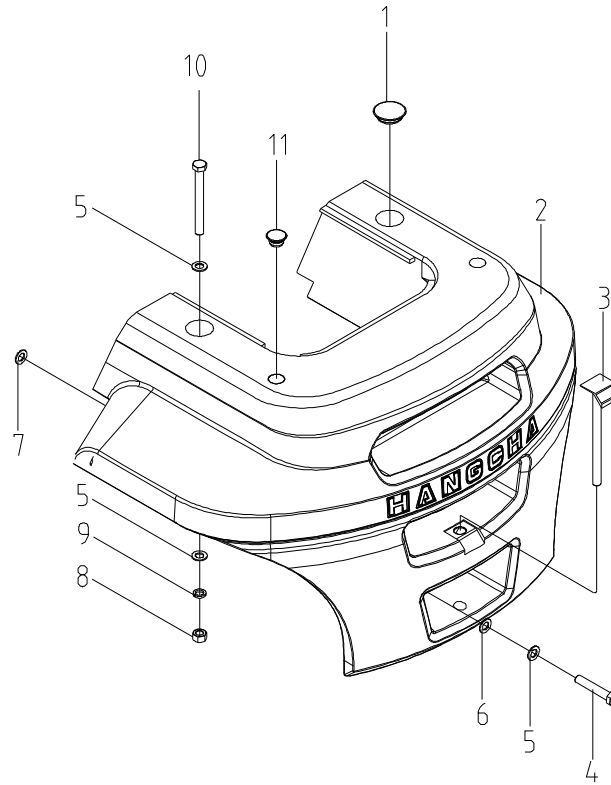


图 5 护顶架
Fig.5 Overhead guard

A#CPCD160-AXG90 B#CPCD140-AXG90 C#CPCD160-AXG83 D#CPCD140-AXG83

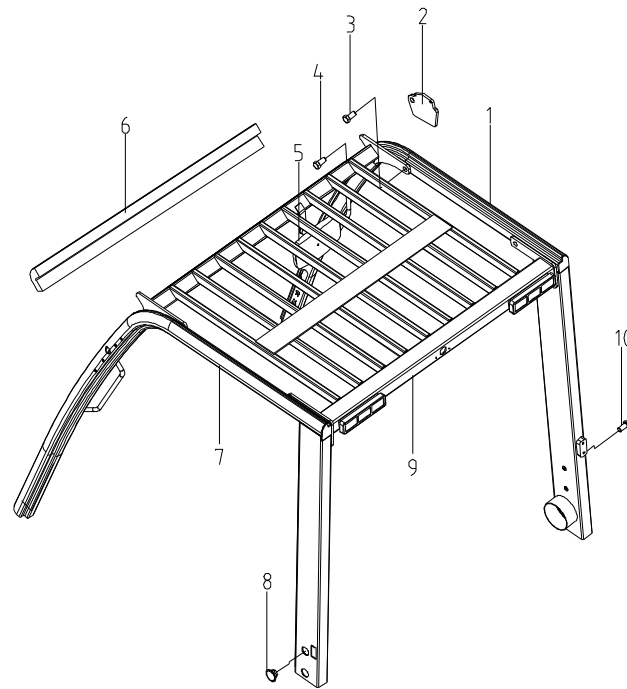


图 6 座椅总成
Fig.6 Seat assy

A#CPCD160-AXG90 B#CPCD140-AXG90 C#CPCD160-AXG83 D#CPCD140-AXG83



图7 标示
Fig.7 Nameplate

A#CPCD160-AXG90 B#CPCD140-AXG90 C#CPCD160-AXG83 D#CPCD140-AXG83

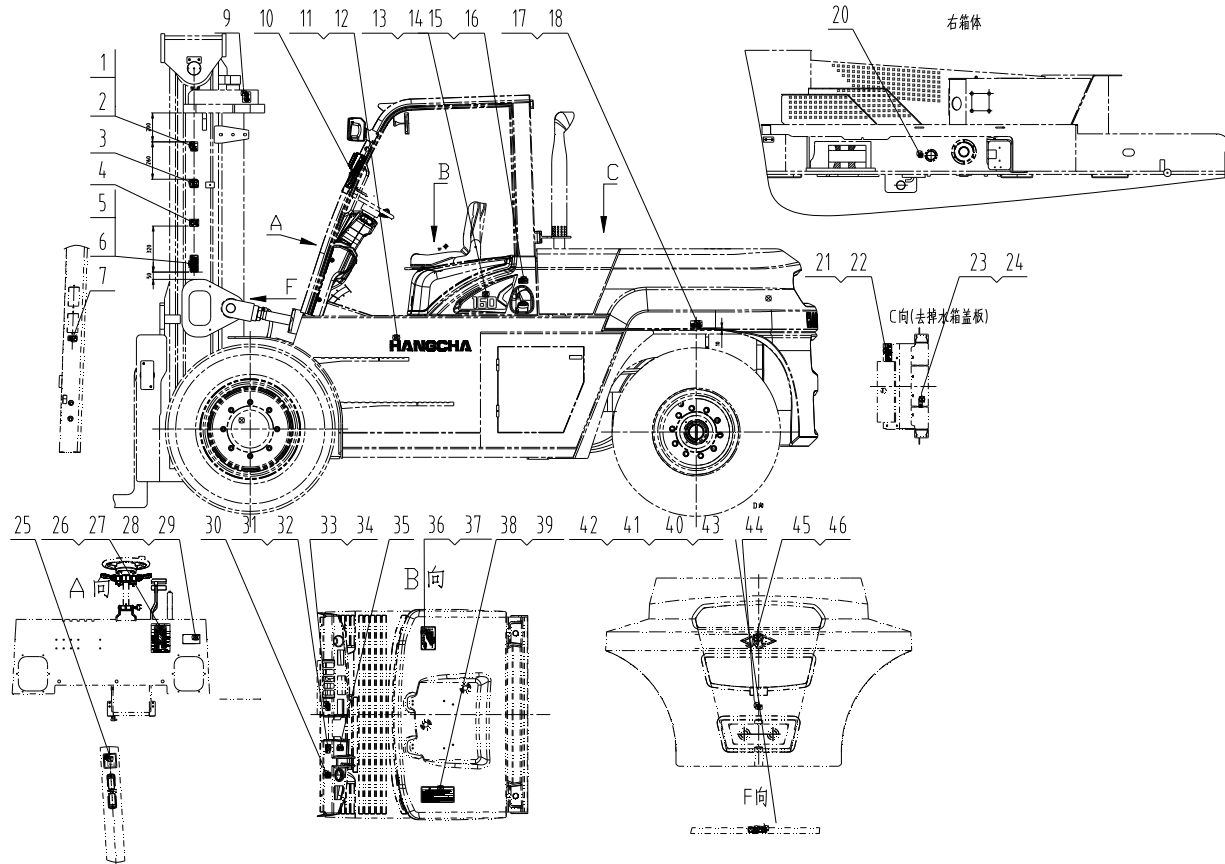


图 7/ Fig.7 标示/Nameplate

序号 tem	物料码 Part No.	名称	Description	数量 Qty	日期 Date	备注或适用车型 Remarks or Serial No.
1	GR501-010011-000	起吊标签	Lifting label	2		
2	XR700-020015-000	起吊标签	Lifting label	2		英文 English
3	XR310-020009-000	云智能标签	Cloud Intelligence label	2		云智能模块用
4	GR501-010026-000	CE 标签	CE label	1		CE
5	GR501-010014-000	危险标签	Dangerous label	2		
6	XR700-020014-000	危险标签	Dangerous label	2		英文 English
7	NC9321-020019-000	严禁冲水标签	No washing label	1		
9	GR501-010010-000	起吊标签	Lifting label	2		
10	NC9321-020013-000	安全带标签	Safety belt label	1		
11	XR460-020005-000	字样标签	Script label	2		
12	GR501-010016-000	字样标签	Script label	2		英文 English
13	AX1600-020003-000	左侧吨位标签	Left ton nameplate	1		A#C#
	AX1400-020003-000	左侧吨位标签	Left ton nameplate	1		B#D#
14	AX1600-020004-000	右侧吨位标签	Right ton nameplate	1		A#C#
	AX1400-020004-000	右侧吨位标签	Right ton nameplate	1		B#D#
15	GX1600-020028-000	燃油标签	Fuel label	1		A#B#
16	R960-020028-001	柴油标签	Diesel label	1		C#D#
17	GX160-020008-000	轮胎气压标签	Tyre pressure label	1		
18	GX160-020009-000	轮胎气压标签	Tyre pressure label	1		英文 English
20	R960-020011-001	液压油标签	Hydraulic oil label	1		
21	NC9321-020010-000	切手危险标签	Fan cutting hands label	1		英文 English
22	R960-020040-001	切手危险标签	Fan cutting hands label	1		
23	R960-020016-001	防冻液标签	Antifreeze label	1		
24	R960-020017-001	防冻液标签	Antifreeze label	1		英文 English
25	R450-020011-001	噪音标示	Noise label	1		CE
26	XR310-020021-000	润滑系统标签	Lubrication label	1		英文 English
27	XR310-020020-000	润滑系统标签	Lubrication label	1		
28	AX1600-020002-000	产品铭牌	Product nameplate	1		A#C#
28	AX1400-020002-000	产品铭牌	Product nameplate	1		B#D#
29	G012618-004010-00	铆钉 4×10	Rivet 4×10	4		
30	R960-020030-001	紧急停用开关标签	Emergency stop label	1		
31	R960-020039-001	操纵标签 1	Operation label 1	1		
32	R960-020007-001	操纵标签 1	Operation label 1	1		英文 English
33	GR1001-010028-000	充压标签	Charge pressure label	1		
34	GR1001-010027-000	充压标签	Charge pressure label	1		英文 English
35	R960-020022-001	手制动器标签	Parking braking label	1		

第五部分 操纵系统
Part V Control system

A#CPCD160-AXG90

B#CPCD140-AXG90

C#CPCD160-AXG83

D#CPCD140-AXG83

序号 Item	名称 Description	适用车型 Serial No.	页码 Page
图 1 Fig. 1	制动微动操纵总成 Brake and inching assembly	A#B#C#D#	5-1
图 2 Fig.2	蓄能器油路 Accumulator oil circuit	A#B#C#D#	5-4
图 2-1 Fig.2-1	单稳充液阀总成 Prefill valve assy	A#B#C#D#	5-6
图 3 Fig.3	制动管路 Brake oil circuit	A#B#C#D#	5-8
图 4 Fig.4	冷却油路 Cooling oil pipe	A#B#C#D#	5-10
图 5 Fig.5	手制动总成 Hand brake assy	A#B#C#D#	5-12

图 1 制动微动操纵总成

Fig.1 Brake and inching assembly

A#CPCD160-AXG90 B#CPCD140-AXG90 C#CPCD160-AXG83 D#CPCD140-AXG83

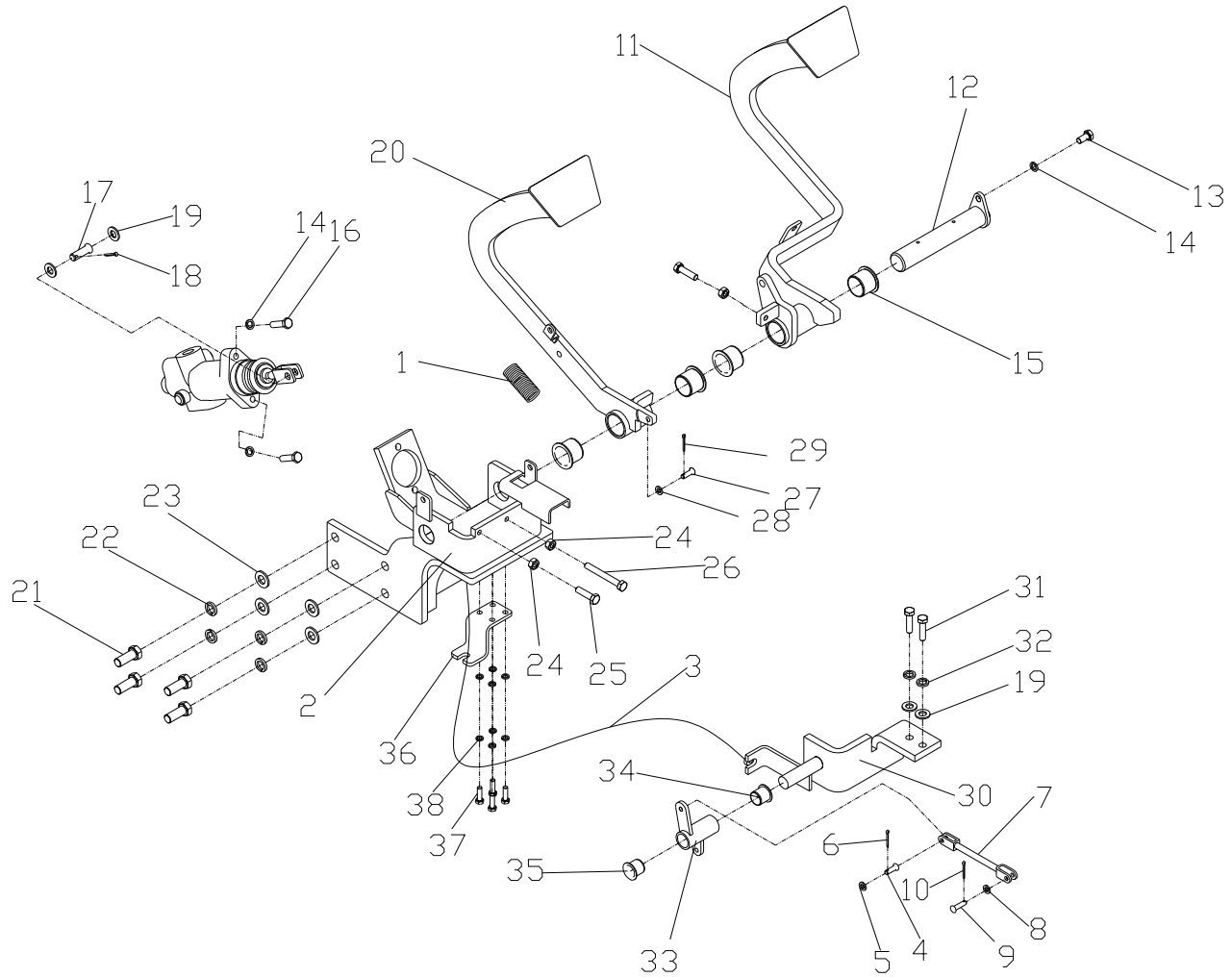


图 1/Fig.1 制动微动操纵总成/Brake and inching assembly

序号 tem	物料码 Part No.	名称	Description	数量 Qty	日期 Date	备注或适用车型 Remarks or Serial No.
1	SC601-510001-000	弹簧	Spring	2		
2	AX1600-511000-000	底座	Pedestal	1		
3	AX1600-510100-000	拉线总成	Stayguy assy	1		
4	G000882-006018-01	销轴 B6×18	Pin shaft B6×18	2		
5	G0097P1-000006-00	垫圈 6	Washer 6	6		
6	G000091-2P5020-00	销 2.5×20	Pin 2.5×20	2		
7	SC601-510300-000	连杆总成	Connecting rod assy	1		
8	G0097P1-000008-00	垫圈 8	Washer 8	1		
9	G000882-006022-01	销轴 B6×22	Pin shaft B6×22	1		
10	G000091-002018-00	销 2×18	Pin 2×18	1		
11	AX1600-512000-000	制动踏板总成	Brake pedal assy	1		
12	GA700-510200-000	轴	Shaft	1		
13	G005783-008016-00	螺栓 M8×16	Bolt M8×16	1		
14	G000093-000008-00	垫圈 8	Washer 8	3		
15	Q701B90-NPT1/16-G00	油杯	Oil cup	1		
16	G005783-008035-00	螺栓 M8×35	Bolt M8×35	3		
17	G000882-010026-01	销轴 B10×26	Pin shaft B10×26	1		
18	G000091-3P2018-00	销 3.2×18	Pin 3.2×18	1		
19	G0097P1-000010-00	垫圈 10	Washer 10	2		
20	AX1600-513000-000	微动踏板总成	Slight travel pedal assy	1		
21	G005783-012030-00	螺栓 M12×30	Bolt M12×30	4		
22	G0097P1-000012-00	垫圈 12	Washer 12	4		
23	G000093-000012-00	垫圈 12	Washer 12	4		
24	G006170-000008-00	螺母 M8	Nut M8	3		
25	G005783-008030-00	螺栓 M8×30	Bolt M8×30	1		
26	G005783-008065-00	螺栓 M8×65	Bolt M8×65	1		
27	G000882-006020-01	销轴 B6×20	Pin shaft B6×20	1		
28	G0097P1-000005-00	垫圈 5	Washer 5	1		
29	G000091-002012-00	销 2×12	Pin 2×12	1		
30	X700-516000-000	变速箱支架	Gearbox support	1		
31	G005785-010030-00	螺栓 M10×1.25×30	Bolt M10×1.25×30	2		
32	G000093-000010-00	垫圈 10	Washer 10	1		
33	X700-515000-000	摇臂总成	Rocker assy	1		
34	G0894P1-000018-00	轴用弹性挡圈-A 型 18	Check ring A type 18	1		
35	SC601-510002-000	垫圈 18	Washer 18	1		

图2 蓄能器管路
Fig.2 Accumulator oil circuit

A#CPCD160-AXG90 B#CPCD140-AXG90 C#CPCD160-AXG83 D#CPCD140-AXG83

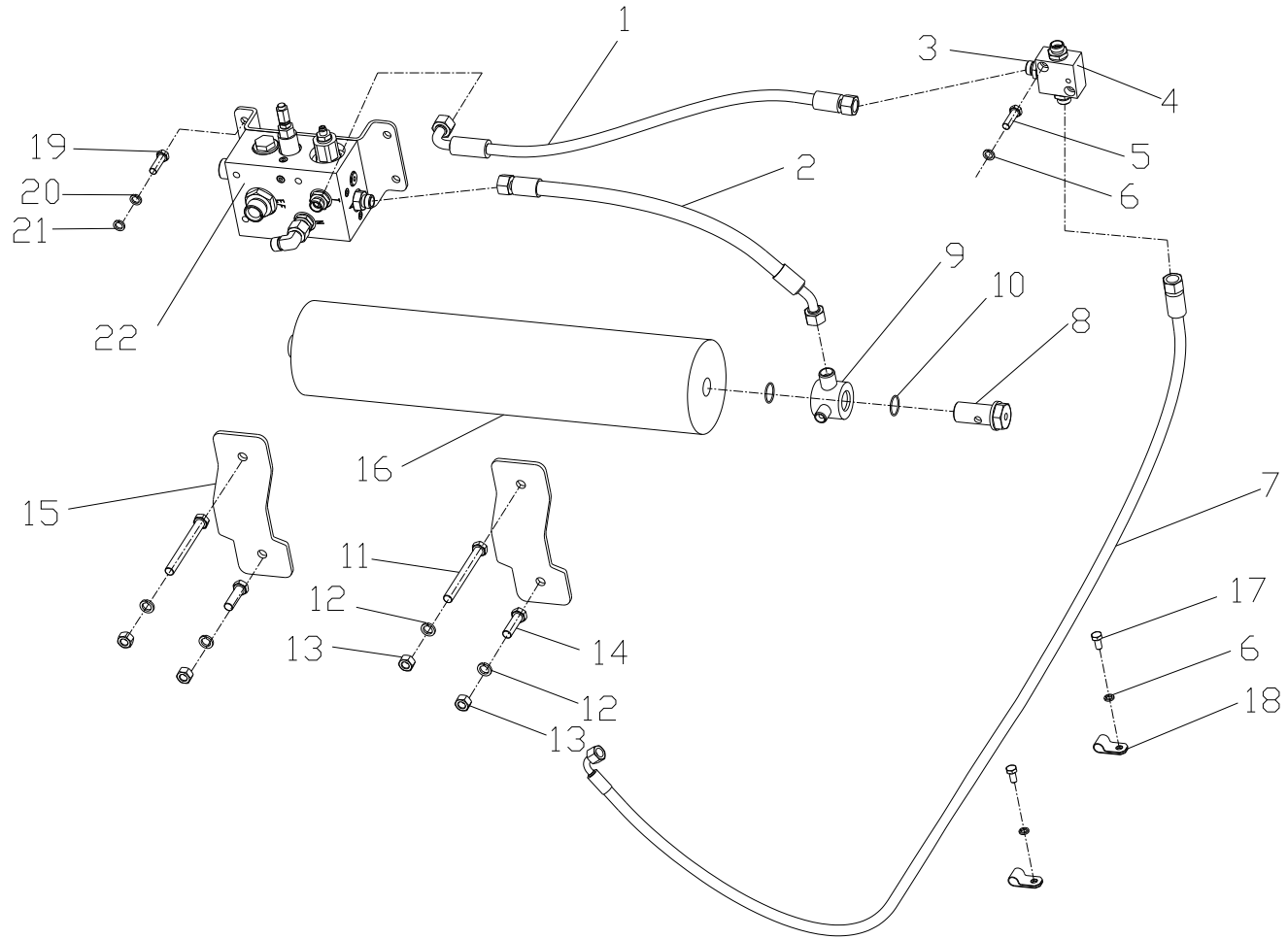


图 2-1 单稳充液阀总成
Fig.2-1 Prefill valve assy

A#CPCD160-AXG90 B#CPCD140-AXG90 C#CPCD160-AXG83 D#CPCD140-AXG83

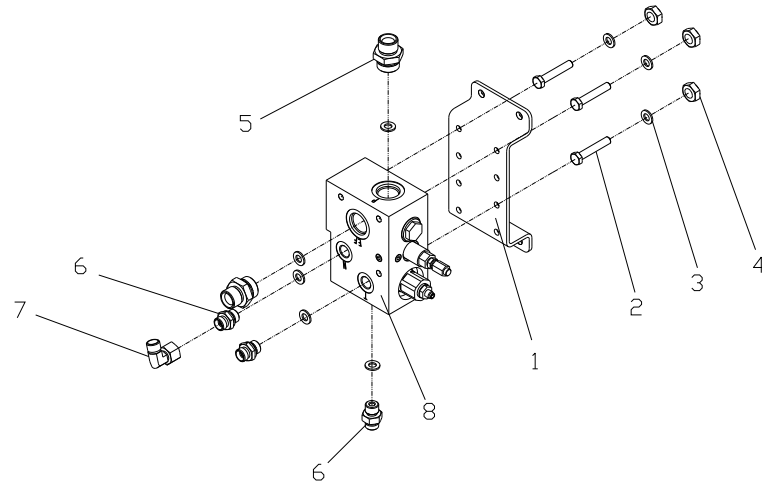


图3 制动管路
Fig.3 Brake oil circuit

A#CPCD160-AXG90 B#CPCD140-AXG90 C#CPCD160-AXG83 D#CPCD140-AXG83

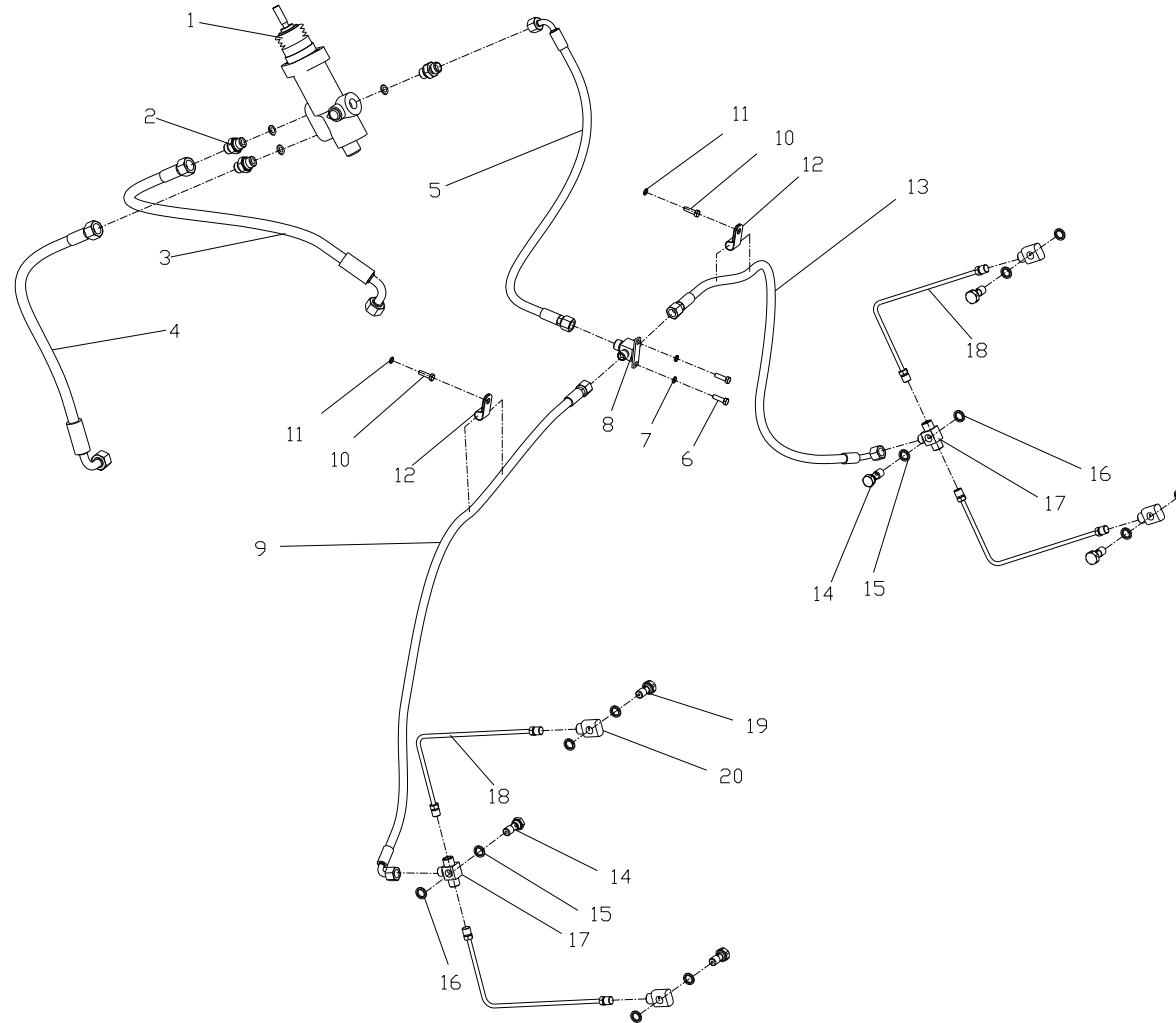


图 4 冷却管路

Fig.4 Cooling oil circuit

A#CPCD160-AXG90 B#CPCD140-AXG90 C#CPCD160-AXG83 D#CPCD140-AXG83

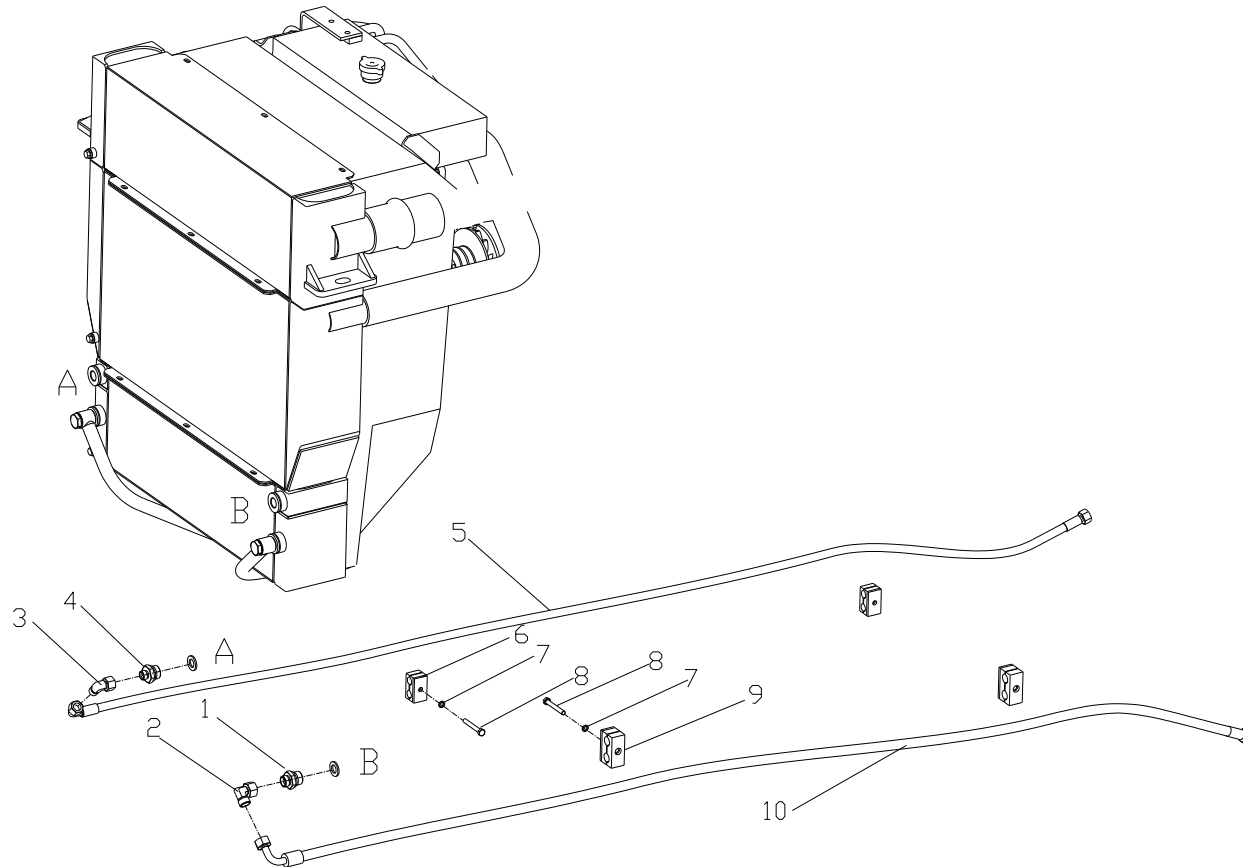
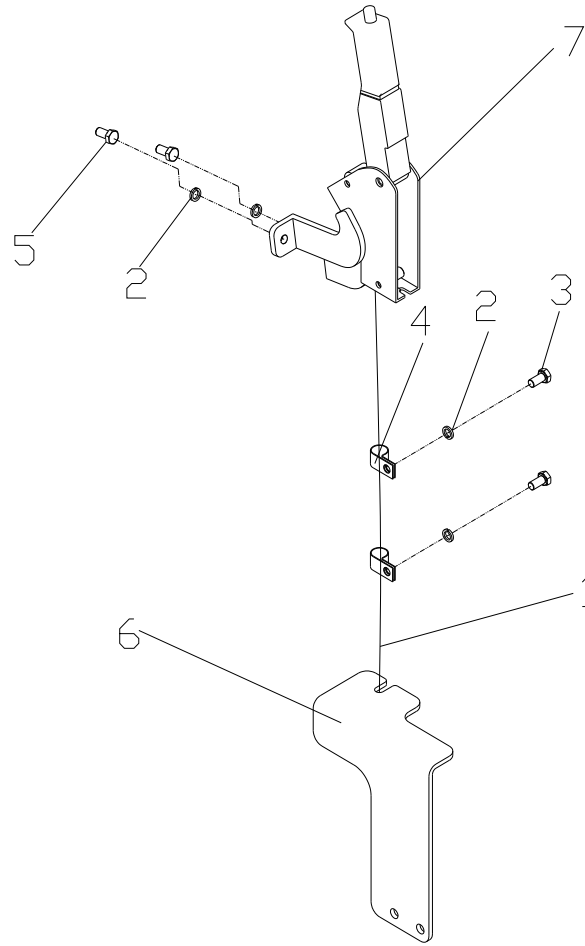


图 5 手制动总成
Fig.5 Hand brake assy

A#CPCD160-AXG90 B#CPCD140-AXG90 C#CPCD160-AXG83 D#CPCD140-AXG83



第六部分 液压系统
Part VI Hydraulic system

A#CPCD160-AXG90

B#CPCD140-AXG90

C#CPCD160-AXG83

D#CPCD140-AXG83

序号 Item	名称 Description	适用车型 Serial No.	页码 Page
图 1 Fig. 1	油泵总成 Pump assembly	A#B#C#D#	6-1
图 2 Fig. 2	主进油管路 Main inlet circuit	A#B#C#D#	6-3
图 3 Fig. 3	主回油管路 Main oil return circuit	A#B#C#D#	6-5
图 4 Fig. 4	多路阀操纵 Control valve manipulate	A#B#C#D#	6-7
图 5 Fig.5	倾斜管路 Tilting oil pipe	A#B#C#D#	6-9
图 6 Fig.6	转向管路 Steering oil pipe	A#B#C#D#	6-11
图 7 Fig.7	起升管路 Lifting oil pipe	A#B#C#D#	6-13
图 8 Fig.8	液压油箱附件 Oil tank accessory	A#B#C#D#	6-15

图 1 油泵总成
Fig.1 Pump assy

A#CPCD160-AXG90 B#CPCD140-AXG90 C#CPCD160-AXG83 D#CPCD140-AXG83

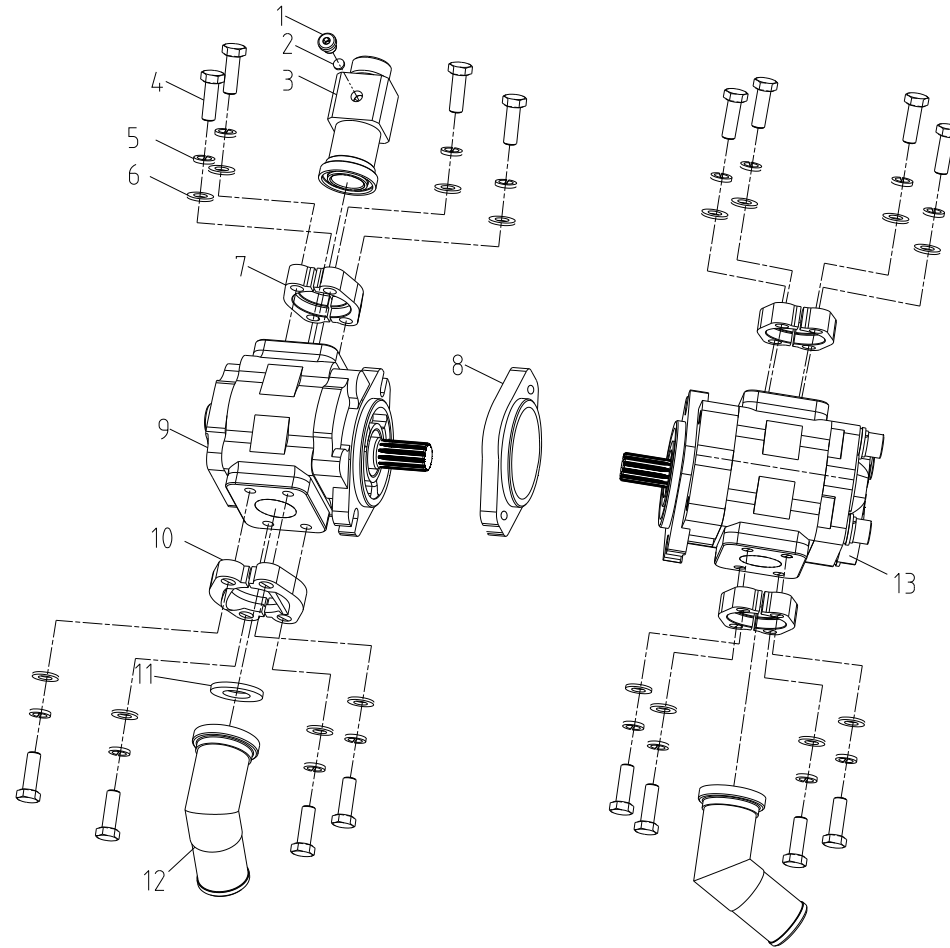


图 2 主进油管路
Fig.2 Main inlet circuit

A#CPCD160-AXG90 B#CPCD140-AXG90 C#CPCD160-AXG83 D#CPCD140-AXG83

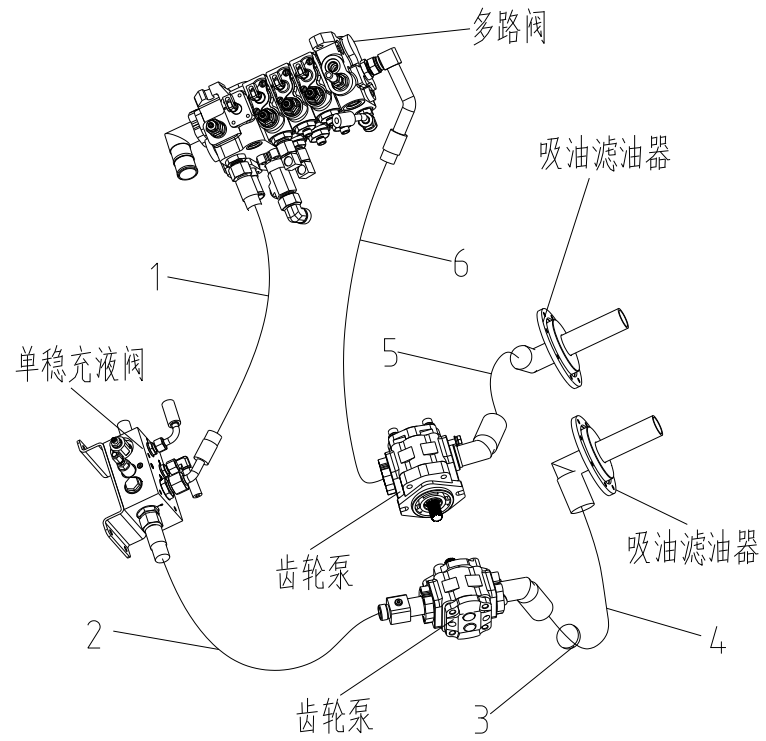


图 3 主回油管路
Fig.3 Main oil return circuit

A#CPCD160-AXG90 B#CPCD140-AXG90 C#CPCD160-AXG83 D#CPCD140-AXG83

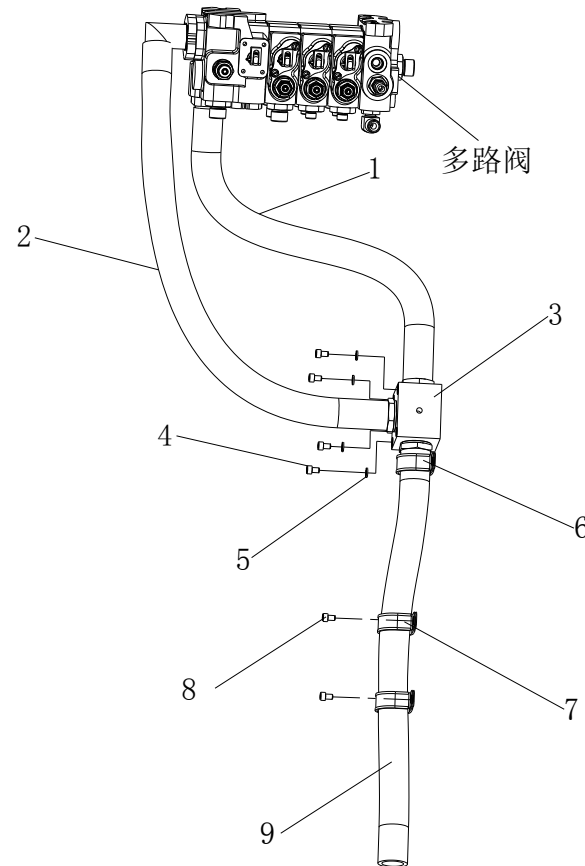


图 4 多路阀操纵
Fig.4 Multi-way valve control

A#CPCD160-AXG90 B#CPCD140-AXG90 C#CPCD160-AXG83 D#CPCD140-AXG83

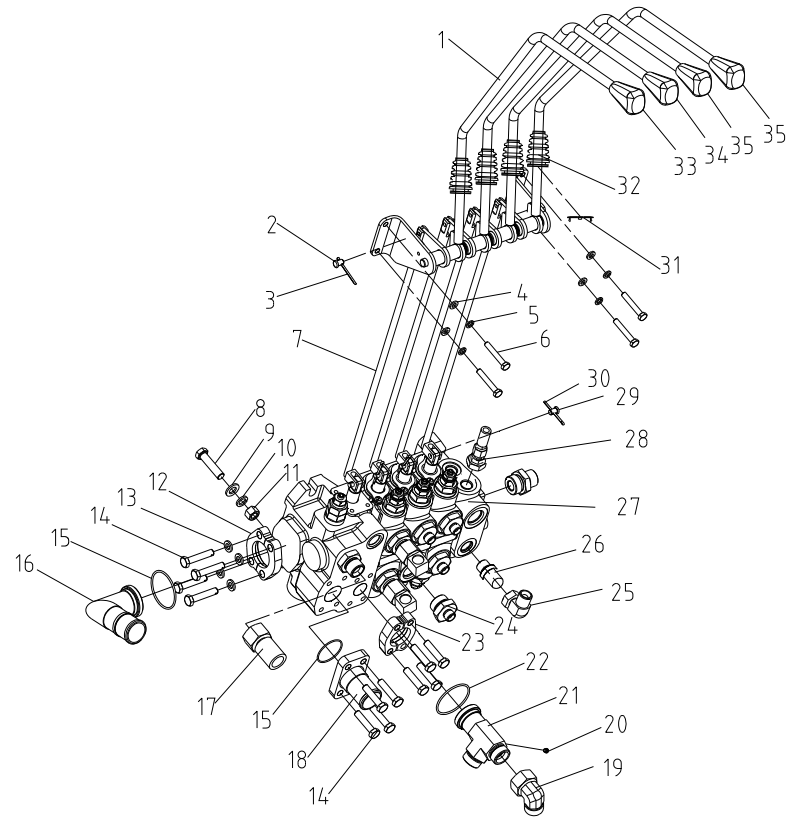


图 4/Fig.4 多路阀操纵/Multi-way valve control

序号 tem	物料码 Part No.	名称	Description	数量 Qty	日期 Date	备注或适用车型 Remarks or Serial No.
1	XR1200-611000-000	多路阀操纵机构总成	Operating handle assy	1		
2	G000882-006022-00	销轴 6×22	Pin shaft 6×22	4		
3	G000091-002016-00	销 2×16	Pin 2×16	1		
4	G0097P1-000008-00	垫圈 8	Washer 8	4		
5	G000093-000008-00	垫圈 8	Washer 8	4		
6	G005783-008022-00	螺栓 M8×22	Bolt M8×22	4		
7	AX1600-610100-000	接杆总成	Connecting rod assy	4		
8	G005783-012055-00	螺栓 M12×55	Bolt M12×55	4		
9	G000093-000012-00	垫圈 12	Washer 12	4		
10	G0097P1-000012-00	垫圈 12	Washer 12	4		
11	G006170-000012-00	螺母 M12	Nut M12	4		
12	FL-20-G00	对开法兰夹	Flange clamp	6		
13	G000093-000010-00	垫圈 10	Washer 10	1		
14	G005783-010025-00	螺栓 M10×25	Bolt M10×25	6		
15	AS568-222-G00	O 形密封圈 AS568-222	O-ring AS568-222	1		
16	G2501-612100-000	回油接头	Oil return joint	1		
17	GXR1600-612100-000	管接头总成	Pipe joint assy	1		
18	AX1600-610200-000	回油接头	Oil return joint	1		
19	G460-620006-000	直角接头	Angle coupling	1		
20	G161-534007-000	堵头	End cap	1		
21	AX1600-610001-000	三通接头	T-junction	1		
22	AS568-219-G00	O 形密封圈 AS568-219	O-ring AS568-219	2		
23	FL-16-G00	对开法兰夹	Flange clamp	3		
24	GXR1600-612200-000	管接头总成	Pipe joint assy	1		
25	G460-633001-000	直角接头	Angle coupling	2		
26	G168-620800-000	管接头总成	Pipe joint assy	1		
27	XR1200-612000-000	四联多路阀	MULTI-WAY VALVE,4SE	2		
28	AX1600-610300-000	管接头总成	Pipe joint assy	1		
29	G000882-008024-00	销轴 8×24	Pin shaft 8×24	1		
30	G000091-3P2018-00	销 3.2×18	Pin 3.2×18	1		
31	XR310-610004-000	塞子	Plug	1		
32	X700-610001-000	护套	Sheath	2		
33	N163-610001-000	起升手把	Lifting knob	1		
34	N163-610002-000	倾斜手把	Tilting knob	2		
35	N163-610003-000	属具手把	Attachment knob	2		

图 5 倾斜管路
Fig.5 Tilting oil pipe

A#CPCD160-AXG90 B#CPCD140-AXG90 C#CPCD160-AXG83 D#CPCD140-AXG83

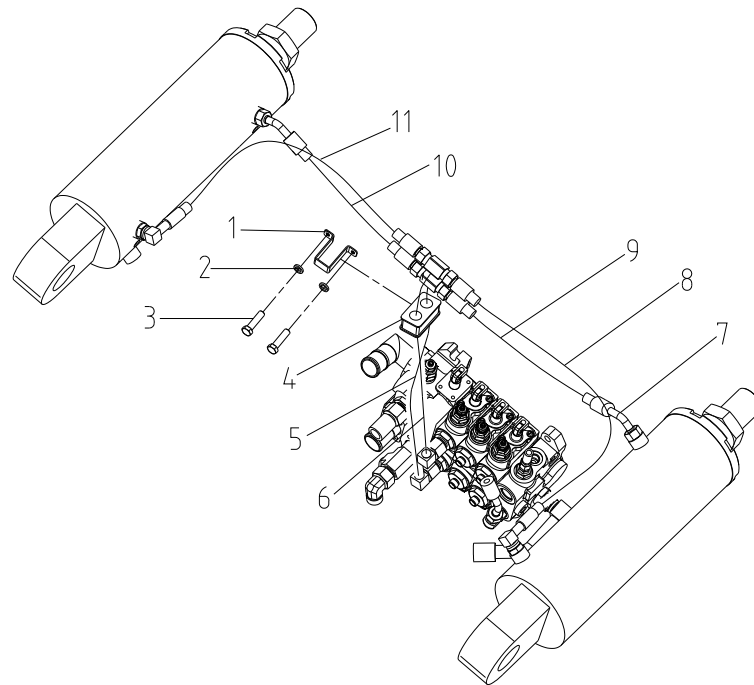


图6 转向管路
Fig.6 Steering oil pipe

A#CPCD160-AXG90 B#CPCD140-AXG90 C#CPCD160-AXG83 D#CPCD140-AXG83

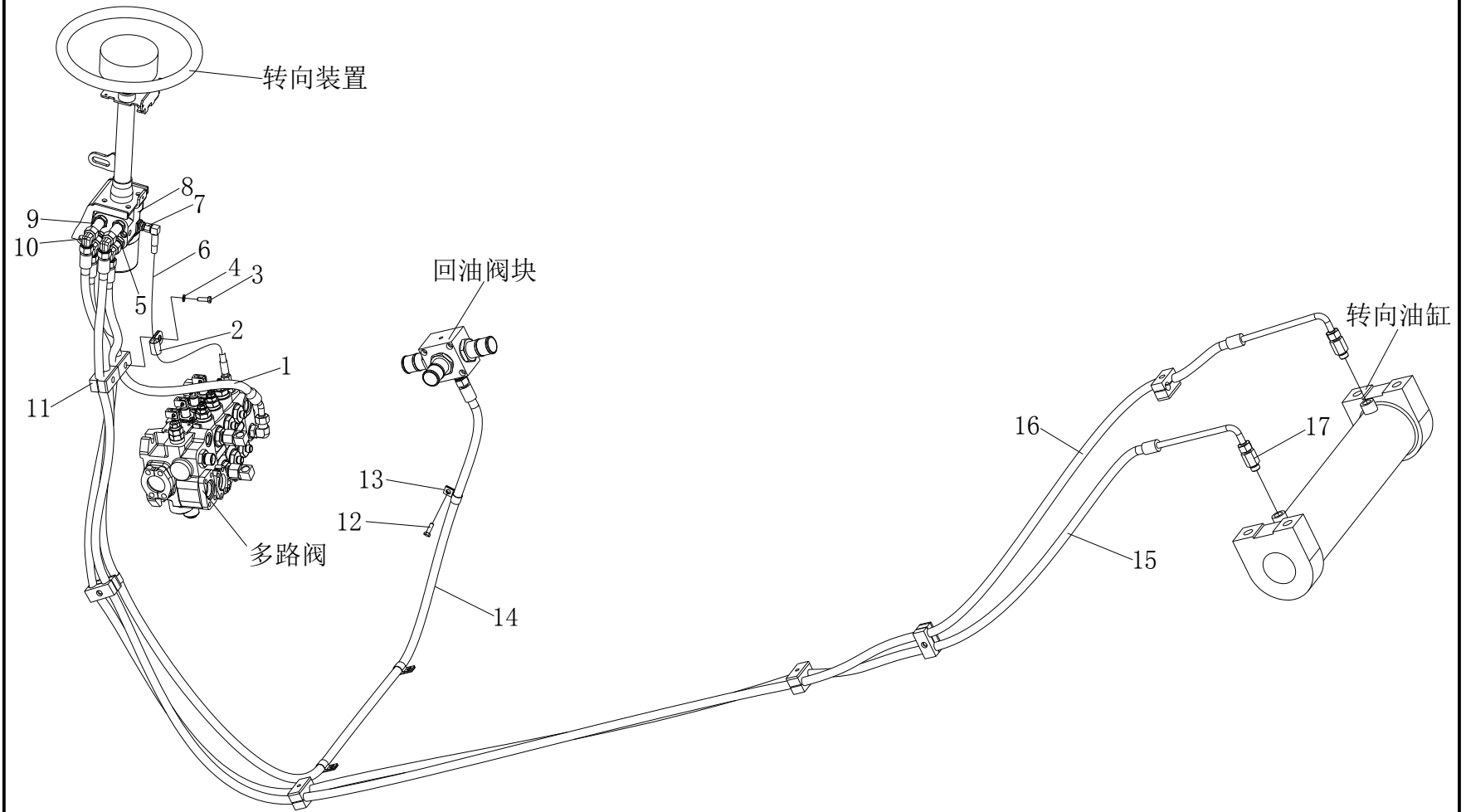


图 7 起升管路
Fig.7 Lifting oil pipe

A#CPCD160-AXG90 B#CPCD140-AXG90 C#CPCD160-AXG83 D#CPCD140-AXG83

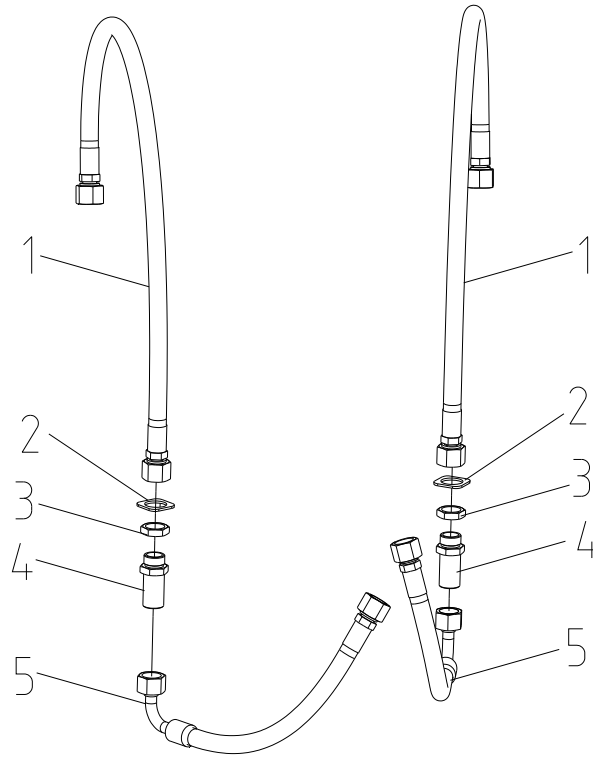
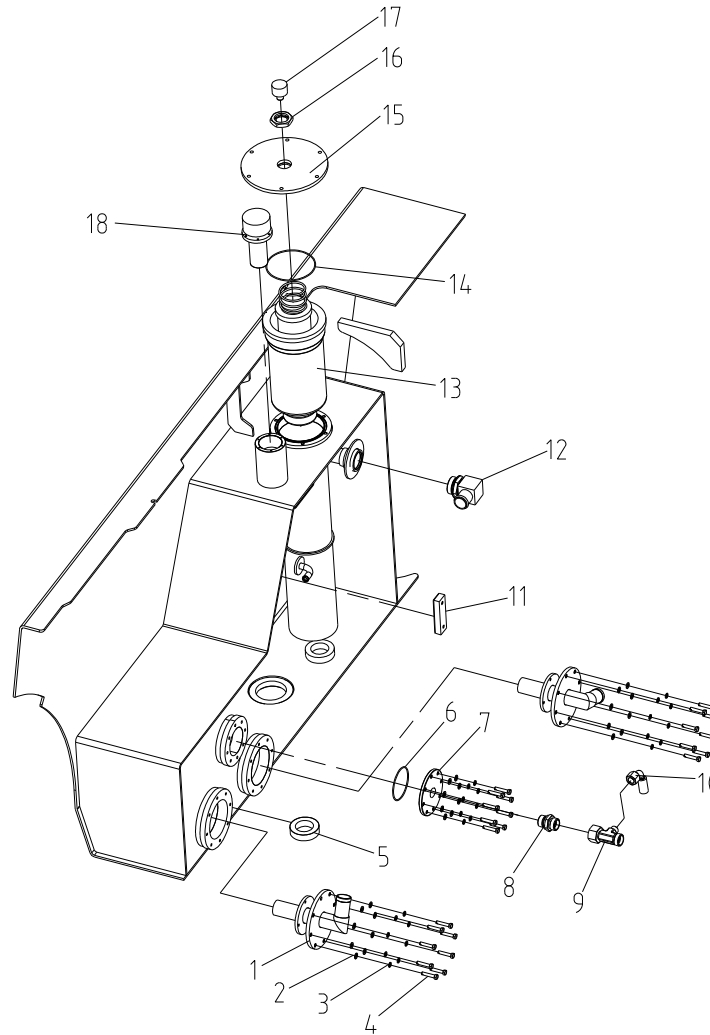


图 8 液压油箱附件
Fig.8 oil tank accessory

A#CPCD160-AXG90 B#CPCD140-AXG90 C#CPCD160-AXG83 D#CPCD140-AXG83



第七部分 电气系统
Part VII Electrical system

A#CPCD160-AXG90 B#CPCD140-AXG90 C#CPCD160-AXG83 D#CPCD140-AXG83

序号 Item	名称 Description	适用车型 Serial No.	页码 Page
图 1 Fig.1	电气系统 Electrical system	A#B#	7-1
图 2 Fig.2	显示器总成 Display assy	A#B#	7-5
图 3 Fig.3	前灯总成 Front lamp assy	A#B#C#D#	7-7
图 4 Fig.4	电器板总成 Electrical plate assy	A#B#	7-9
图 5 Fig.5	后灯总成 Taillight assy	A#B#C#D#	7-11
图 6 Fig.6	电气系统 Electrical system	C#D#	7-13
图 7 Fig.7	电器板总成 Electrical plate assy	C#D#	7-17

图 1 电气系统
Fig.1 Electrical system

A#CPCD160-AXG90 B#CPCD140-AXG90

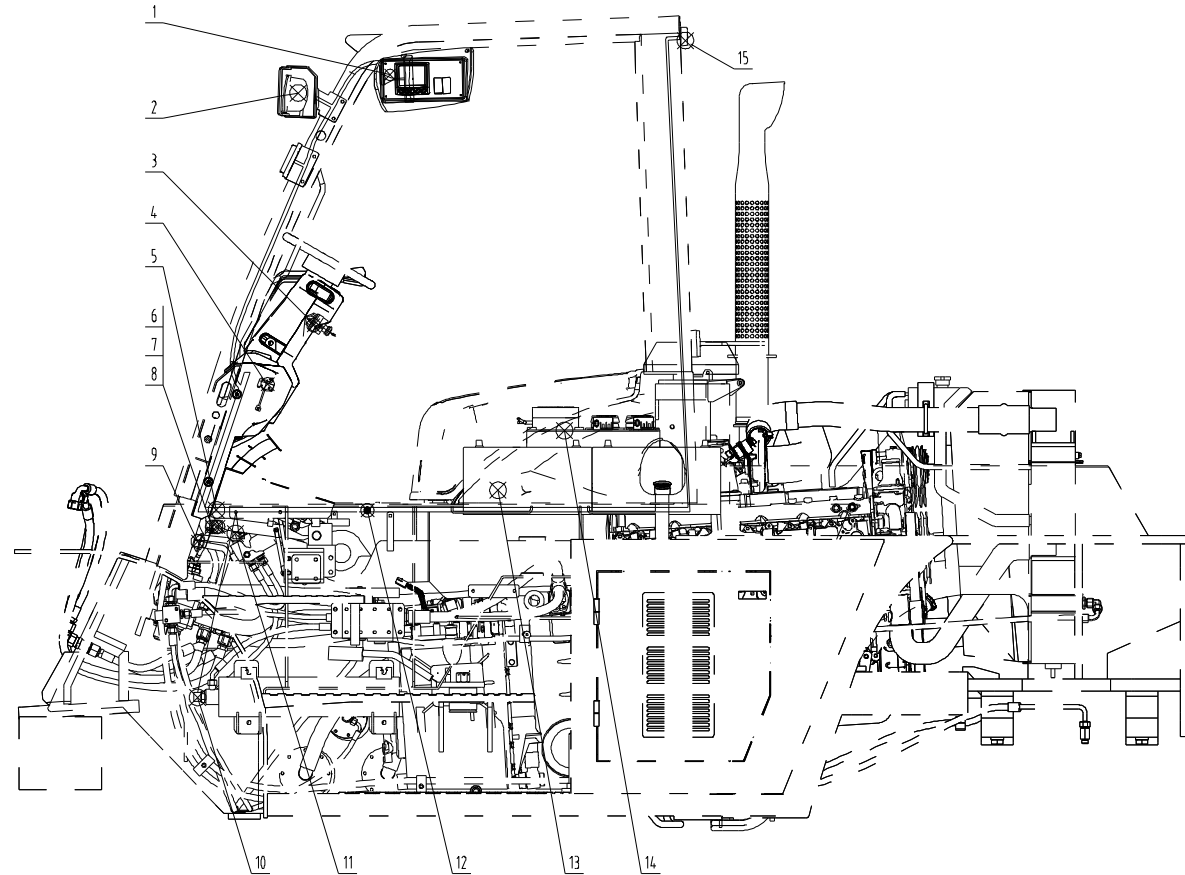


图 1 电气系统
Fig.1 Electrical system

A#CPCD160-AXG90 B#CPCD140-AXG90

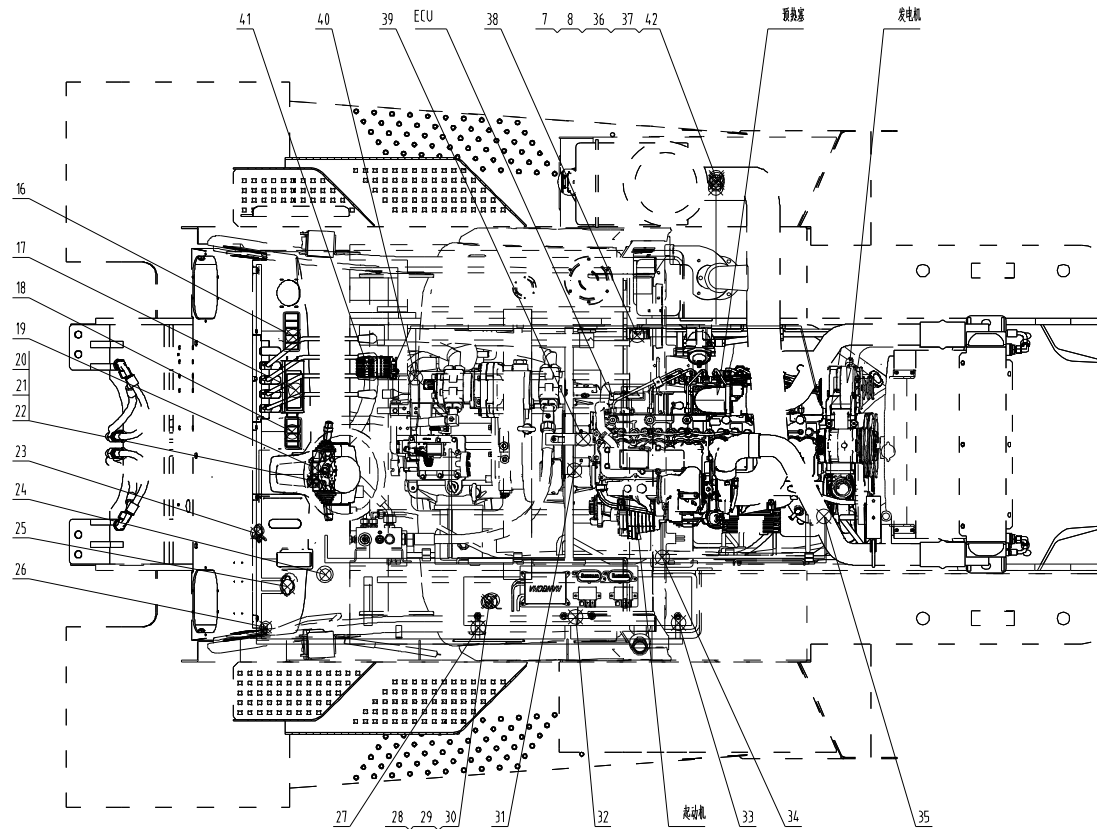


图 1/ Fig.1 电气系统/Electrical system

序号 tem	物料码 Part No.	名称	Description	数量 Qty	日期 Date	备注或适用车型 Remarks or Serial No.
1	XR710-790000-000	显示器总成	Display assy	1		
2	XR700-760000-000	前灯总成	Headlamp assy	1		
3	R450-740200-000	预热起动开关	Preheating start switch	1		
4	XR1200-703000-000	手刹开关总成	Hand brake switch assy	1		
5	AX1600-710000-000	车身主线束	Wire Harness(Frame)	1		
6	G005781-008014-00	螺栓 M8×14	Bolt M8×14	5		
7	G0097P1-000008-00	垫圈 8	Washer 8	7		
8	G000093-000008-00	垫圈 8	Washer 8	7		
9	R450-700200-000	电喇叭	Horn	1		
10	G160-700006-000	储能器油压开关	Accumulator oil pressure switch	1		
11	NC9717-700600-000	制动灯开关	Braking lamp switch	1		
12	PKD-180-G00	捆线带	Strap Clamp	15		
13	G160-700011-000	免维护蓄电池	Battery	2		
14	AX1600-701000-000	电器板总成	Electrical plate assy	1		
15	AX1600-720000-000	后灯总成	Rearlamp assy	1		
16	AX1600-700600-000	五卡翘板开关	5-rocker switch	1		
17	XR310-740000-000	仪表总成	Instrument assy	1		
18	AX1600-700500-000	四卡翘板开关	4-rocker switch	1		
19	M700-705000-000	组合开关总成	Combination switch assy	1		
20	G000818-006010-00	螺钉 M6×10	Screw M6×10	4		
21	G000093-000006-00	垫圈 6	Washer 6	4		
22	G0097P1-000006-00	垫圈 6	Washer 6	4		
23	XF250-700001-000	扎带 145×8	Ribbon 145×8	10		
24	G250K8-700004-000	蜂鸣报警器	Buzzer alarm	1		
25	ED250B-1-G00	紧急断电开关	Emergency cut-off switch	1		
26	AP250-710002-510	智能控制器	Intelligent controller	1		
27	AX1600-700100-000	蓄电池正极线	Battery Cable(Positive)	1		
28	XR1000-700100-000	油量传感器	Fuel Sensor	1		
29	J000982-000005-00	垫圈 5	Washer 5	5		
30	G000818-005012-00	螺钉 M5×12	Screw M5×12	5		
31	XR1200-700001-000	主线束固定支架	Bracket	1		
32	GX1600-700300-000	蓄电池串联线	Battery Cable	1		
33	AX1600-700200-000	蓄电池负极线	Battery Cable(Negative)	1		
34	GXRX1600-700400-000	起动机正电源线	Battery Cable (stater)	1		
35	GR504-700001-000	水温传感器	Water temperature sensor	1		

图 2 显示器总成
Fig.2 Display assy

A#CPCD160-AXG90 B#CPCD140-AXG90

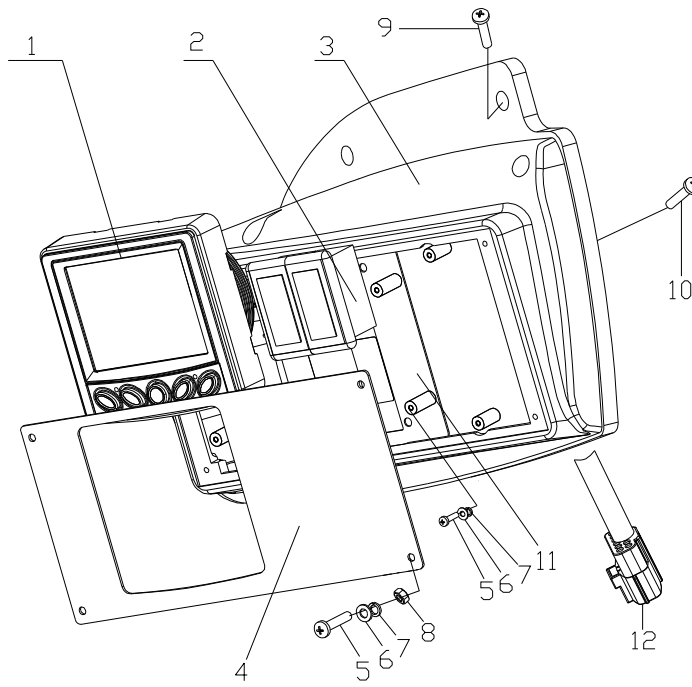


图3 前灯总成
Fig.3 Front lamp assy

A#CPCD160-AXG90 B#CPCD140-AXG90 C#CPCD160-AXG83 D#CPCD140-AXG83

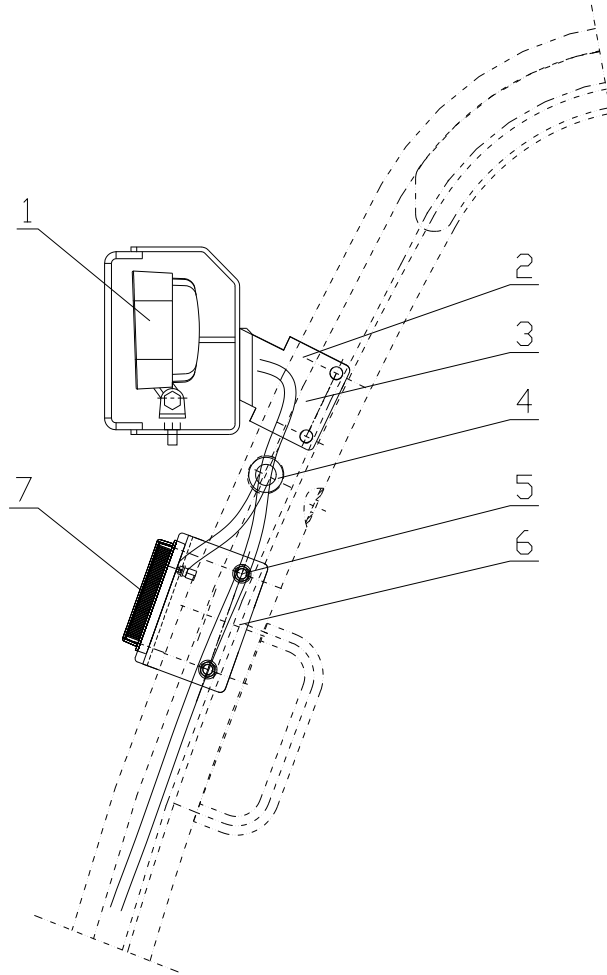


图 4 电器板总成
Fig.4 Electrical plate assy

A#CPCD160-AXG90 B#CPCD140-AXG90

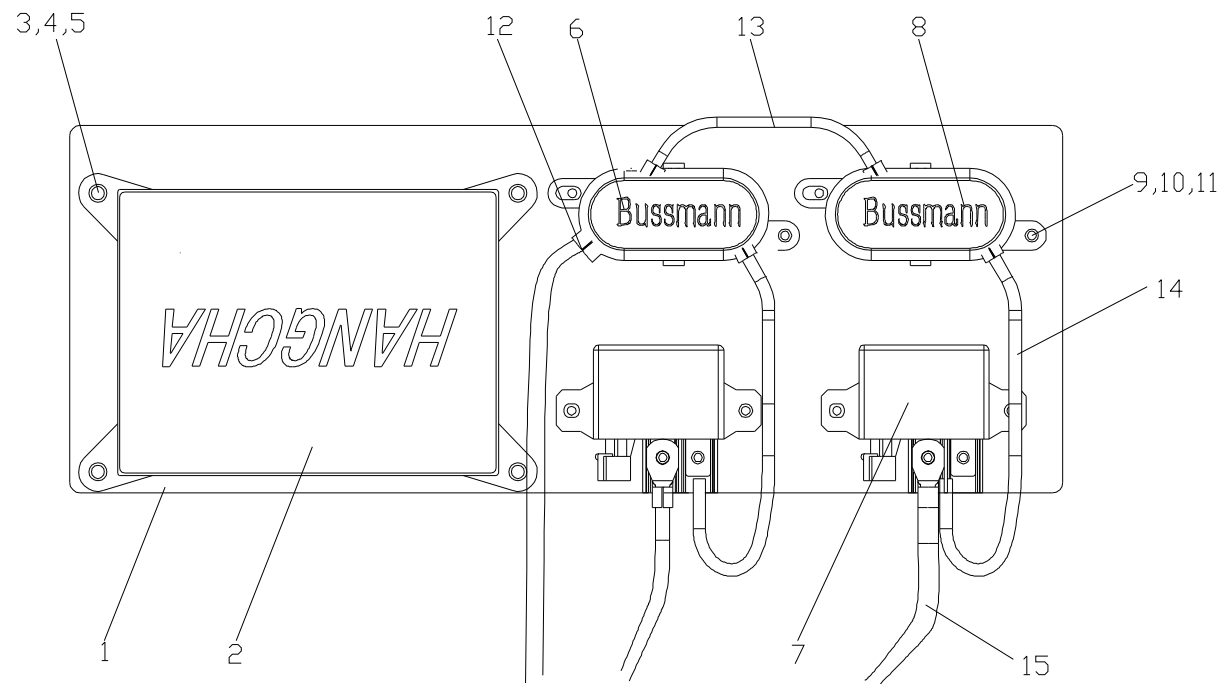


图5 后灯总成
Fig.5 Rearlamp assy

A#CPCD160-AXG90 B#CPCD140-AXG90 C#CPCD160-AXG83 D#CPCD140-AXG83

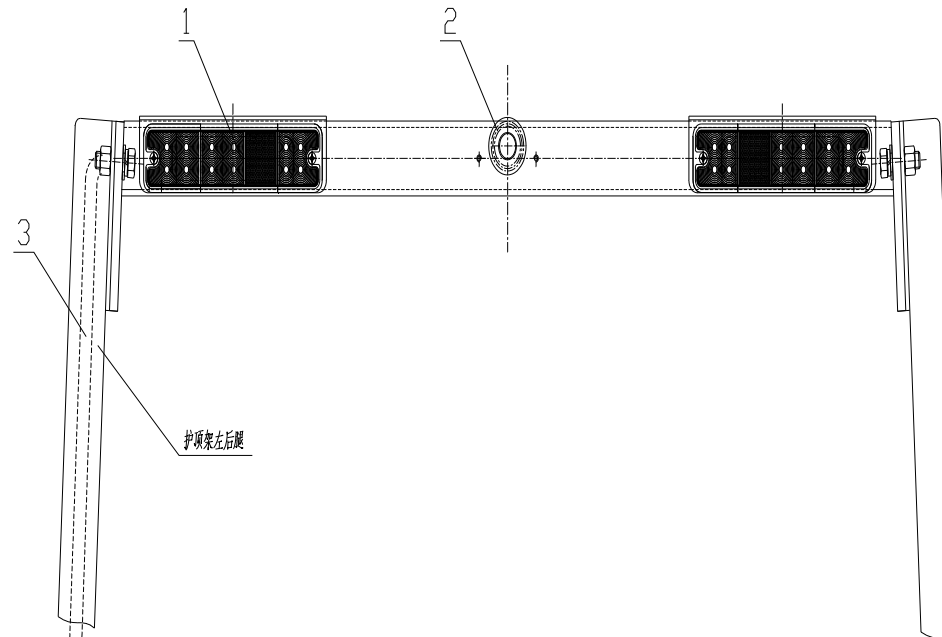


图 6 电气系统
Fig.6 Electrical system

C#CPCD160-AXG83 D#CPCD140-AXG83

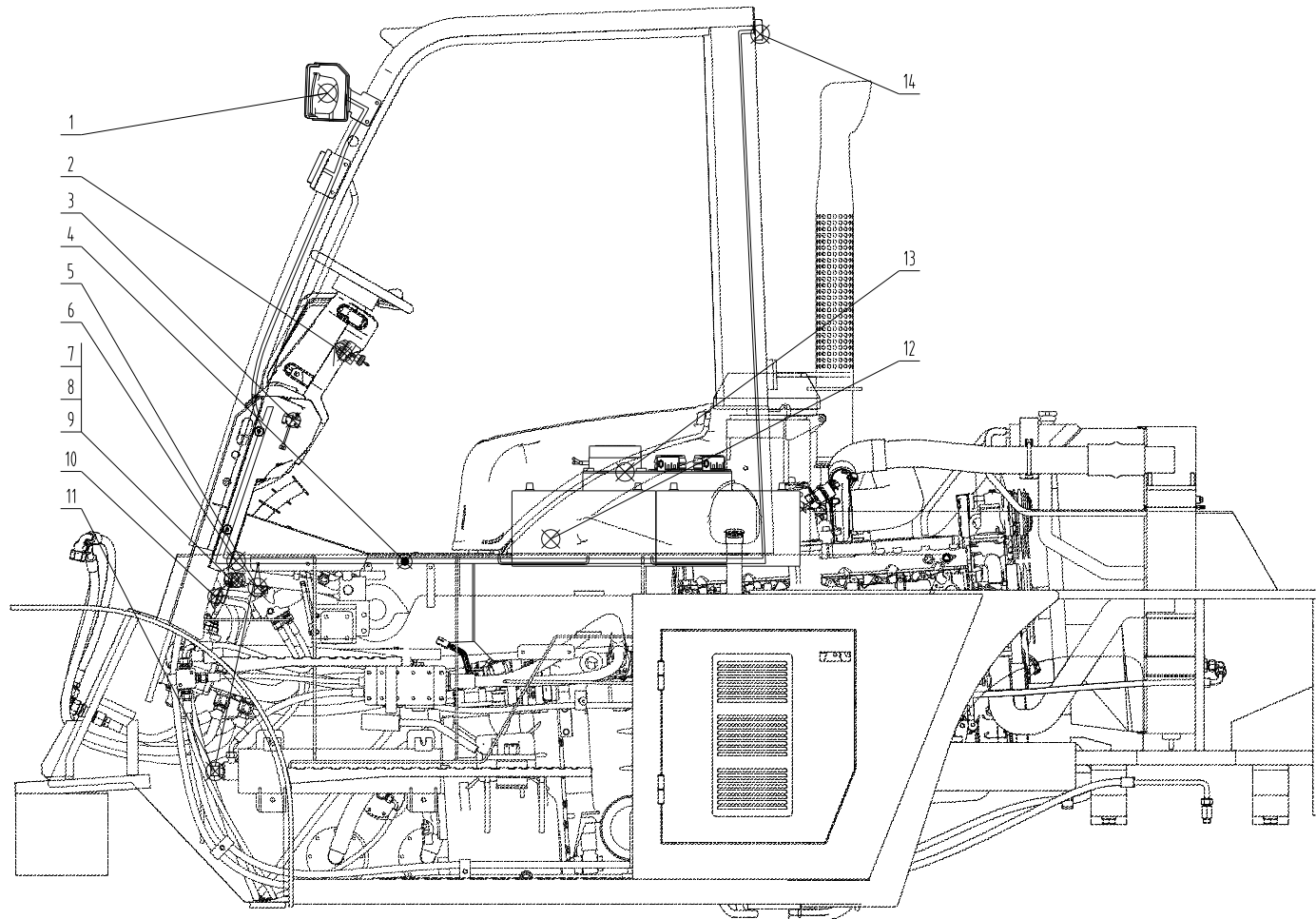


图6 电气系统
Fig.6 Electrical system

C#CPCD160-AXG83 D#CPCD140-AXG83

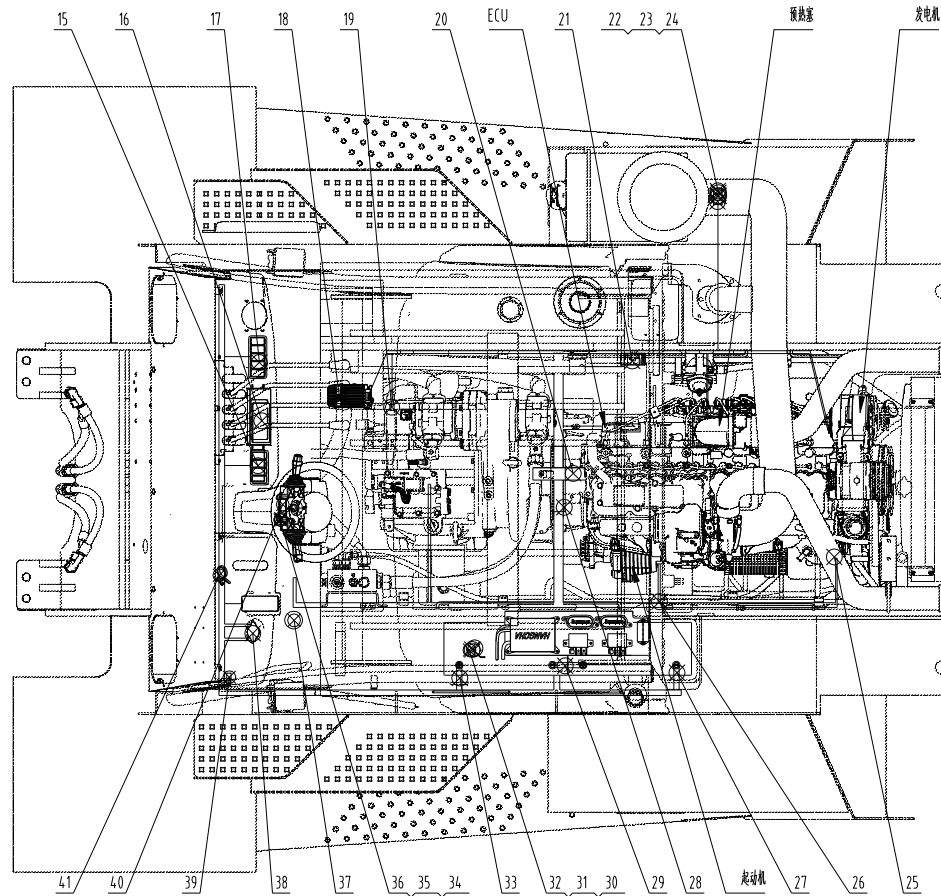
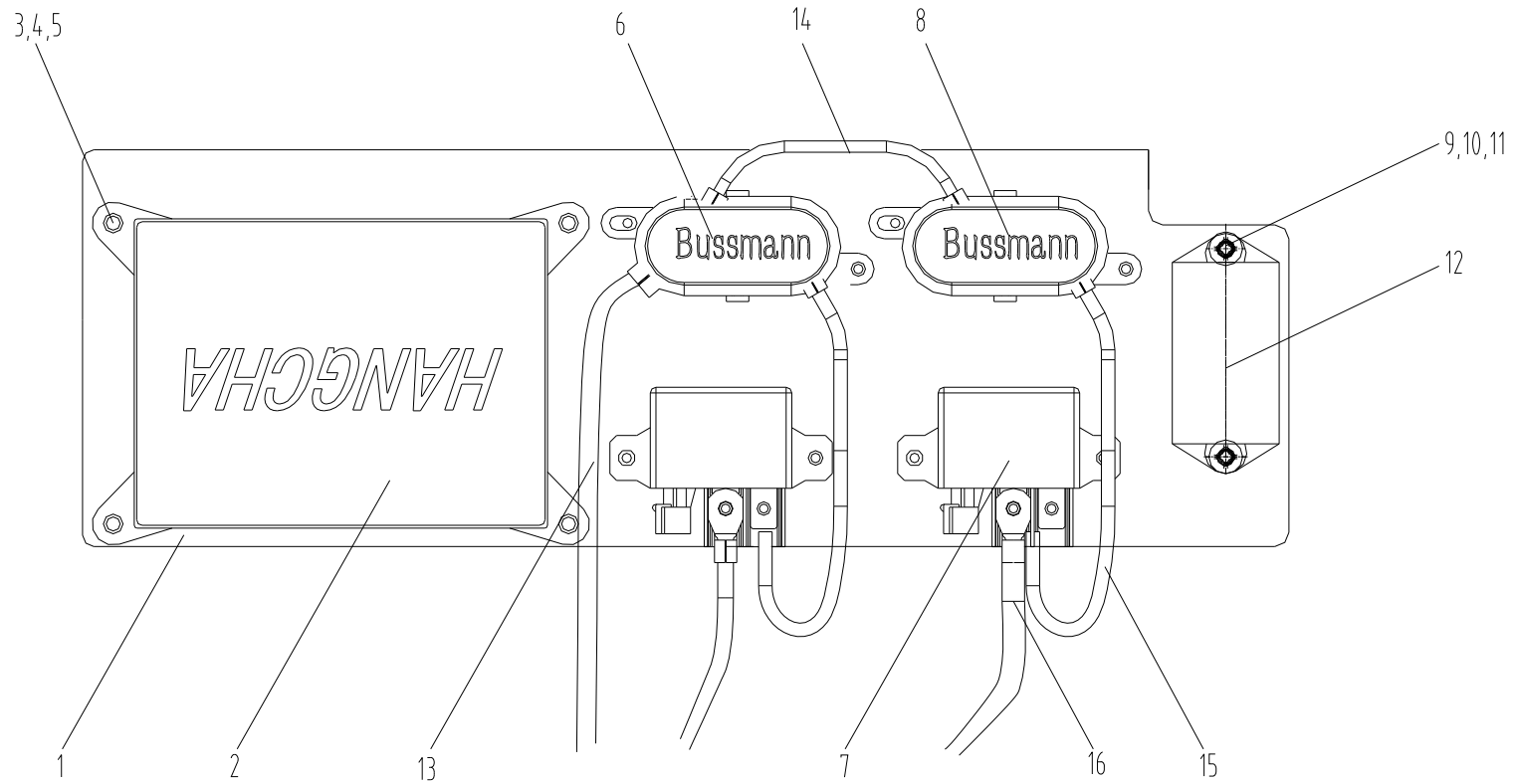


图 6/Fig.6 电气系统/Electrical system

序号 tem	物料码 Part No.	名称	Description	数量 Qty	日期 Date	备注或适用车型 Remarks or Serial No.
1	XR700-760000-000	前灯总成	Headlamp assy	1		
2	R450-740200-000	预热起动开关	Preheating start switch	1		
3	XR1200-703000-000	手刹开关总成	Hand brake switch assy	1		
4	PKD-180-G00	捆线带	Strap Clamp	15		
5	NC9717-700600-000	制动灯开关	Braking lamp switch	1		
6	AX1610-710000-000	车身主线束	Wire Harness(Frame)	1		
7	G005781-008014-00	螺栓 M8×14	Bolt M8×14	5		
8	G0097P1-000008-00	垫圈 8	Washer 8	7		
9	G000093-000008-00	垫圈 8	Washer 8	7		
10	R450-700200-000	电喇叭	Horn	1		
11	G160-700006-000	储能器油压开关	Accumulator oil pressure switch	1		
12	G160-700011-000	免维护蓄电池	Battery	2		
13	AX1610-701000-000	电器板总成	Electrical plate assy	1		
14	AX1610-720000-000	后灯总成	Rearlamp assy	1		
15	AX1610-700500-000	四卡翘板开关	4-rocker switch	1		
16	XR310-740000-000	仪表总成	Instrument assy	1		
17	XR701-700500-520	五卡翘板开关	5-rocker switch	1		
18	XB455-700002-000	油门踏板	Accelerator pedal	1		
19	X700-700002-000	油温报警器	Oil temperature alarm	1		
20	AX1600-700002-000	线束支架	Harness bracket	1		
21	X700-700007-000	倒车蜂鸣器	Reverse Alarm	1		
22	AX1600-700001-000	支板	Support plate	1		
23	G005781-008020-00	螺栓 M8×20	Bolt M8×20	2		
24	G006173-000012-01	螺母 M12×1.5	Nut M12×1.5	1		
25	GR504-700001-000	水温传感器	Water temperature sensor	1		
26	GXRX1600-700400-000	起动机正电源线	Battery Cable (stater)	1		
27	AX1600-700200-000	蓄电池负极线	Battery Cable(Negative)	1		
28	XR1200-700001-000	主线束固定支架	Bracket	1		
29	GX1600-700300-000	蓄电池串联线	Battery Cable	1		
30	G000818-005012-00	螺钉 M5×12	Screw M5×12	5		
31	XR1000-700100-000	油量传感器	Fuel Sensor	1		
32	J000982-000005-00	垫圈 5	Washer 5	5		
33	AX1600-700100-000	蓄电池正极线	Battery Cable(Positive)	1		
34	G000818-006010-00	螺钉 M6×10	Screw M6×10	4		
35	G000093-000006-00	垫圈 6	Washer 6	4		

图 7 电器板总成
Fig.7 Electrical plate assy

C#CPCD160-AXG83 D#CPCD140-AXG83



第八部分 起升系统
Part VIII Lifting system

A#CPCD160-XRXG90B B#CPCD140-AXG90 C#CPCD160-AXG83 D#CPCD140-AXG83

序号 Item	名称 Description	适用车型 Serial No.	页码 Page
图 1 Fig.1	起升组件 Lifting part	2 级门架 SIMPLEX	8-1
图 2 Fig.2	链条总成 Chain	2 级门架 SIMPLEX	8-3
图 3 Fig.3	外门架 Outside mast	2 级门架 SIMPLEX	8-5
图 4 Fig.4	内门架 Inside mast	2 级门架 SIMPLEX	8-7
图 5 Fig.5	货叉架 Fork shelf	2 级门架 SIMPLEX	8-9
图 6 Fig6	左/右升降油缸 Lifting cylinder, left/right	2 级门架 SIMPLEX	8-11
图 7 Fig7	左/右倾斜油缸 Tilting cylinder, left/right	2 级门架 SIMPLEX	8-13
图 8 Fig.8	主油路系统 Mast piping system	2 级门架 SIMPLEX	8-15
图 9 Fig.9	调距油路 Adjust oil piping	2 级门架 SIMPLEX	8-17
图 10 Fig.10	货叉架 Fork shelf	2 级门架 SIMPLEX	8-19
图 11 Fig.11	调距油缸 Adjust cylinder	2 级门架 SIMPLEX	8-21
表 Chart	Optional Parts		8-23

图 1 起升组件
Fig.1 Lifting part

2 级门架
SIMPLEX

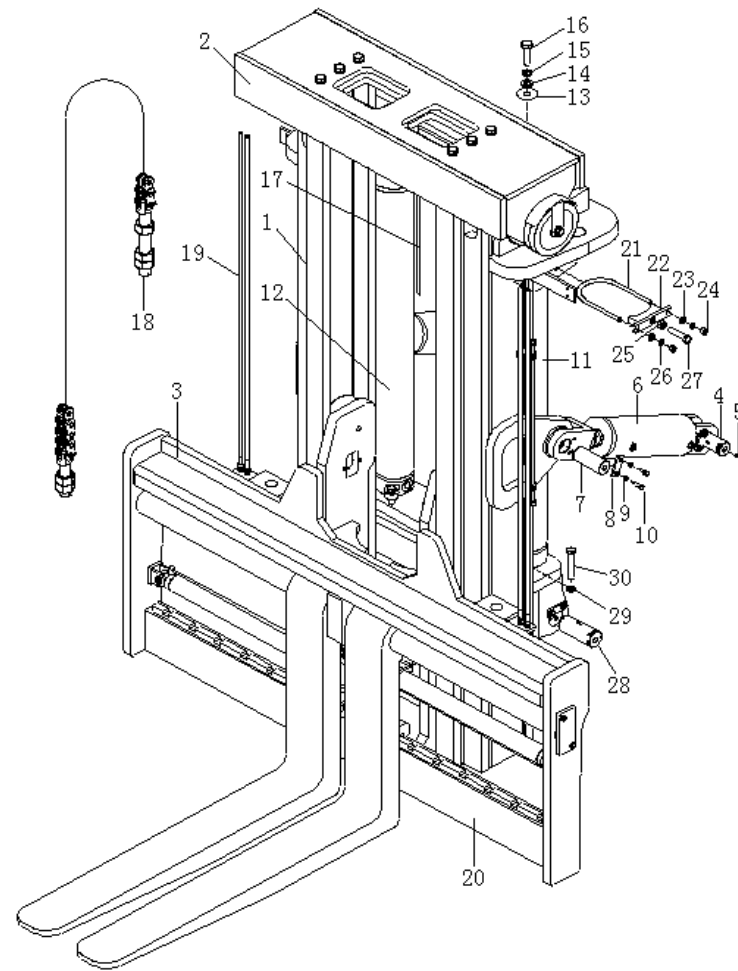


图 1/Fig.1 起升组件/Lifting part

序号 tem	物料码 Part No.	名称	Description	数量 Qty	日期 Date	备注或适用车型 Remarks or Serial No.
1	AX160M300-100000-000	外门架	Outside mast	1		系列见表 1-1 Series see table1-1
2	AX160M300-200000-000	内门架	Inside mast	1		系列见表 1-2 Series see table1-2
3	AX160M300-300000-000	货叉架	Fork carriage assy'	1		
4	AX160M300-000001-000	销轴	Pin shaft	2		
5	G001152-010001-00	油杯 M10×1	Oil cup M10×1	6		
6	AX160M300-020000-0000	倾斜油缸 (左)	Tilting cylinder (left)	1		系列见表1-6-1 Series see table1-6-1
6	AX160M300-010000-0000	倾斜油缸 (右)	Tilting cylinder (right)	1		系列见表 1-6-2 Series see table1-6-2
7	GX160M300-000002-000	销轴	Pin shaft	2		
8	G160M300-000002-000	压板	Press plate	6		
9	G000093-000012-00	垫圈 12	Washer 12	12		
10	G005783-012035-00	螺栓 M12×35	Bolt M12×35	12		
11	GXR160M300-500000-000	左起升油缸	Lift cylinder, left	1		系列见表1-11 Series see table1-11
12	GXR160M300-600000-000	右起升油缸	Lift cylinder, right	1		系列见表 1-12 Series see table1-12
13	GX160M300-000003-000	调整垫片	Adjusting shim	2		
14	G0097P1-000024-00	垫圈 24	Washer 24	2		
15	G000093-000024-00	垫圈 24	Washer 24	2		
16	G005782-024090-00	螺栓 M24×90	Bolt M24×90	2		
17	AX160M300-700000-000	起升油路	Lift oil piping	1		系列见表 1-17 Series see table1-17
18	LH-3244047-101	链条	Chain	2		系列见表 1-18 Series see table1-18
19	AX160M300-800000-000	调距油路	Oil piping	1		系列见表 1-19 Series see table1-19
20	AX160M300-900000-000	调距货叉架	Fork carriage assy'	1		
21	GXR160M300-000001-000	U形螺栓	U-Bolt	2		
22	GX160M300-001000-000	油缸支撑垫	Cylinder support shim	2		
23	G0097P1-000016-00	垫圈 16	Washer 16	4		
24	G006170-000016-00	螺母 M16	Nut M16	4		
25	G006170-000020-00	螺母 M20	Nut M20	4		
26	G000093-000016-00	垫圈 16	Washer 16	4		
27	G005783-020100-00	螺栓 M20×100	Bolt M20×100	2		
28	GX160M300-000002-000	销轴	Pin shaft	2		
29	G000093-000020-00	垫圈 20	Washer 20	2		
30	G005783-020130-00	螺栓 M20×130	Bolt M20×130	2		

图 2 链条总成
Fig.2 Chain assy

2 级门架
SIMPLEX

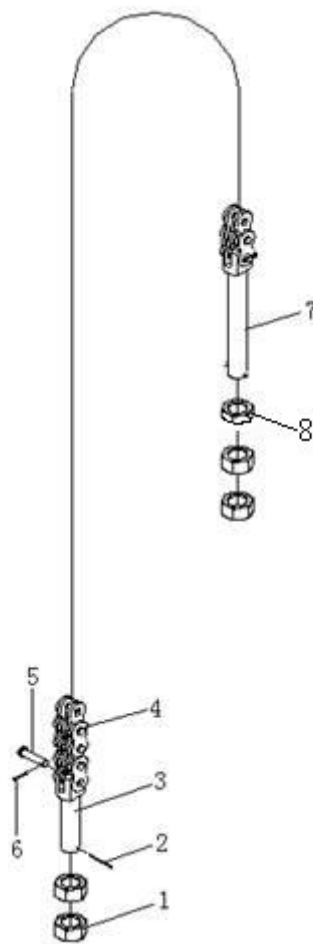


图3 外门架
Fig.3 Outside mast

2级门架
SIMPLEX

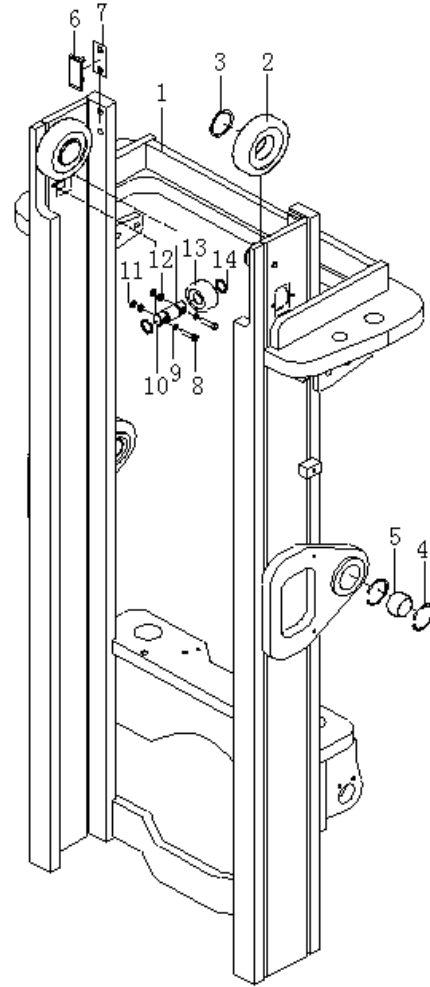


图4 内门架
Fig.4 Inside mast

2级门架
SIMPLEX

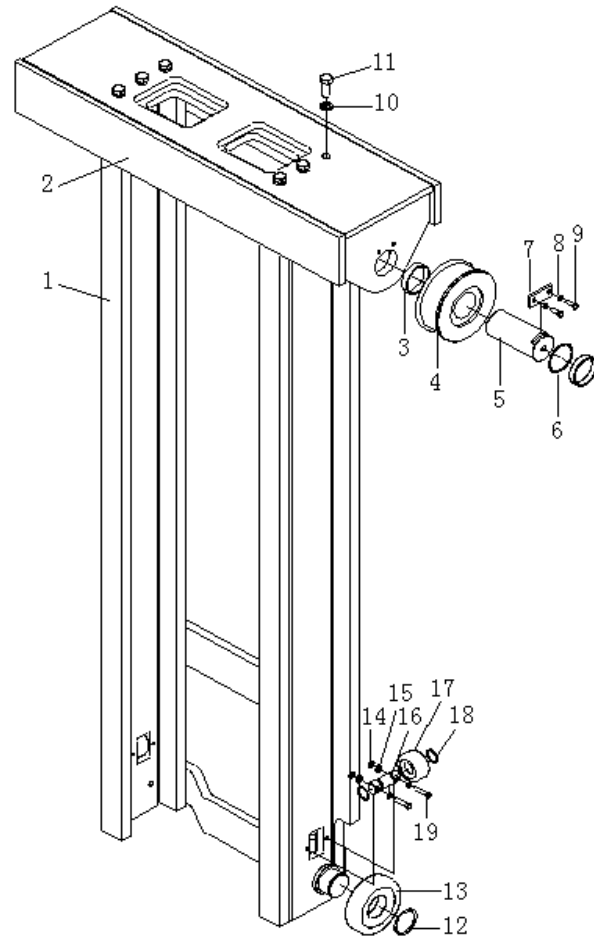


图 5 货叉架
Fig.5 Fork shelf

2 级门架
SIMPLEX

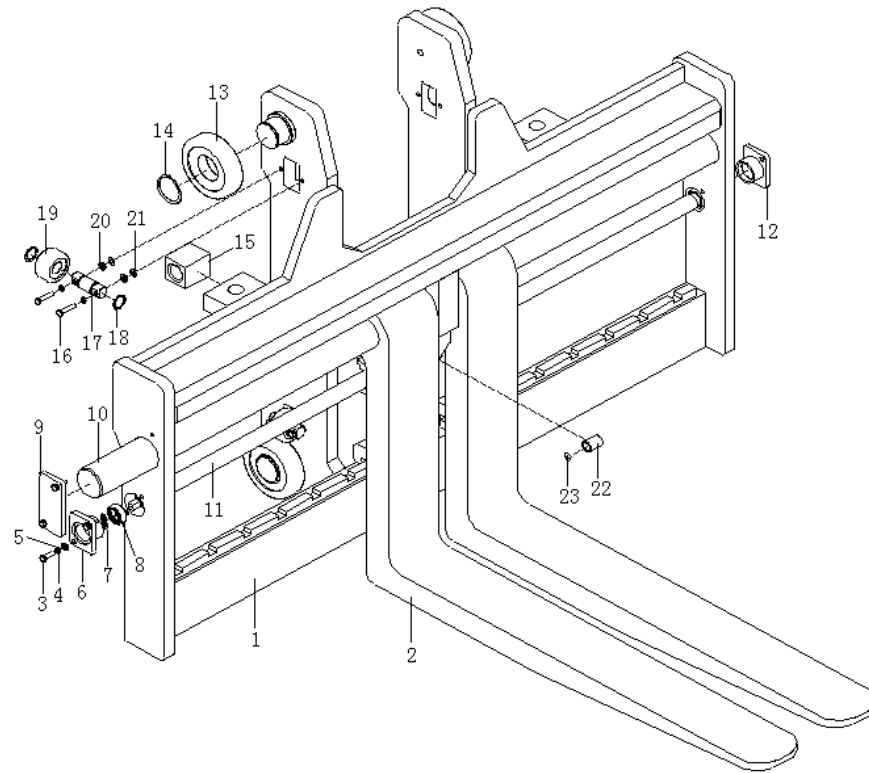


图 6 左/右起升油缸
Fig.6 Lifting cylinder,left/right

2 级门架
SIMPLEX

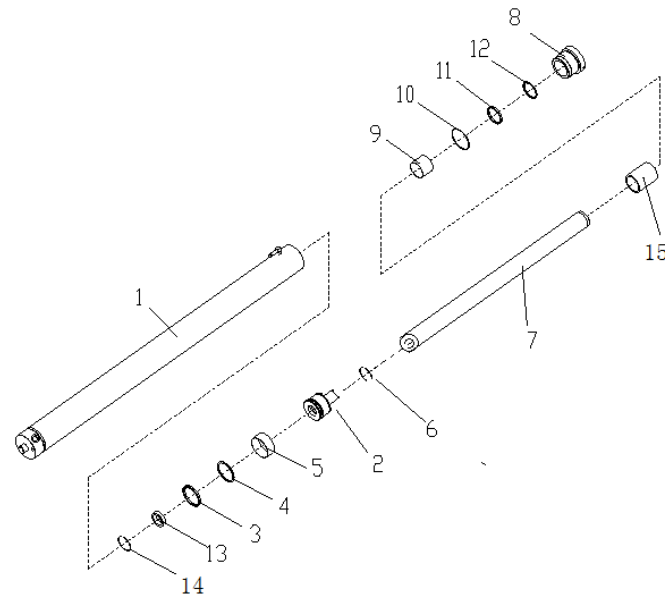


图7 左/右倾斜油缸
Fig.7 Tilting cylinder,left/right

2级门架
SIMPLEX

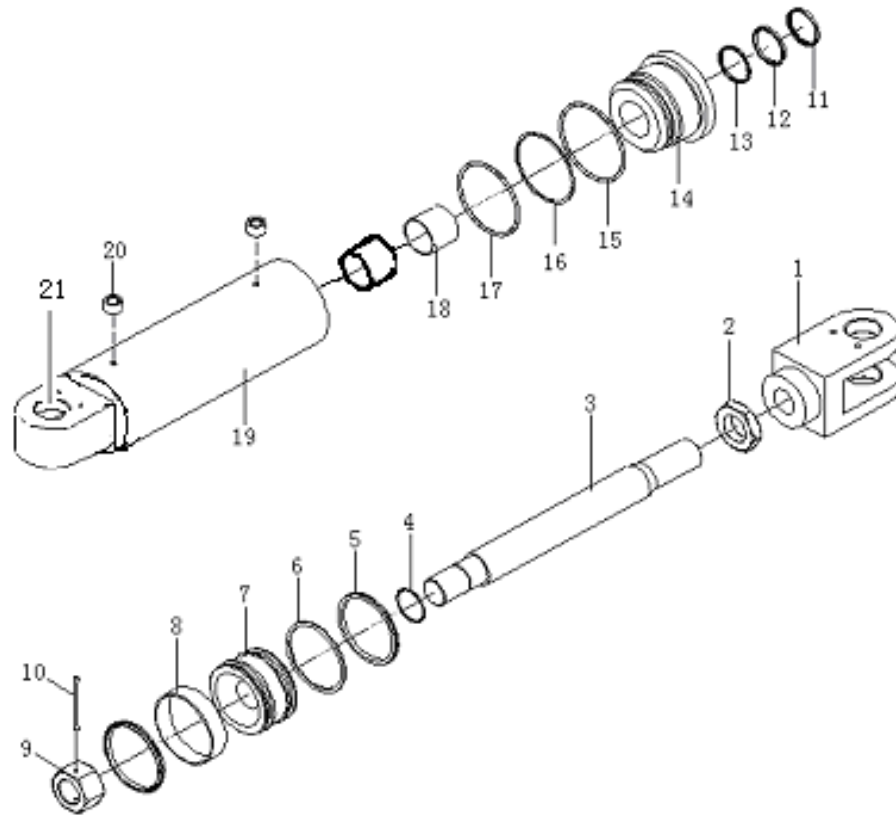


图 8 主油路系统
Fig.8 Mast piping system

2 级门架
SIMPLEX

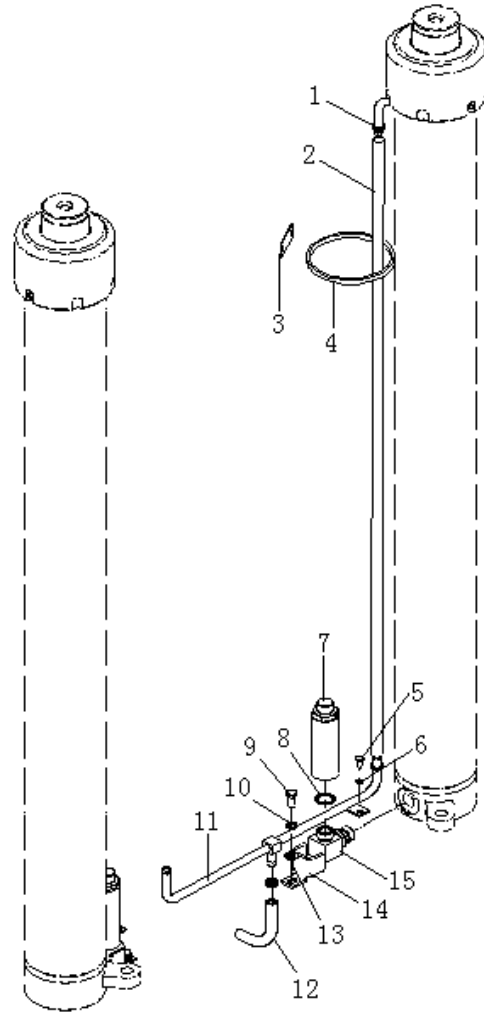


图 9 调距油路
Fig.9 Adjust oil piping

2 级门架
SIMPLEX

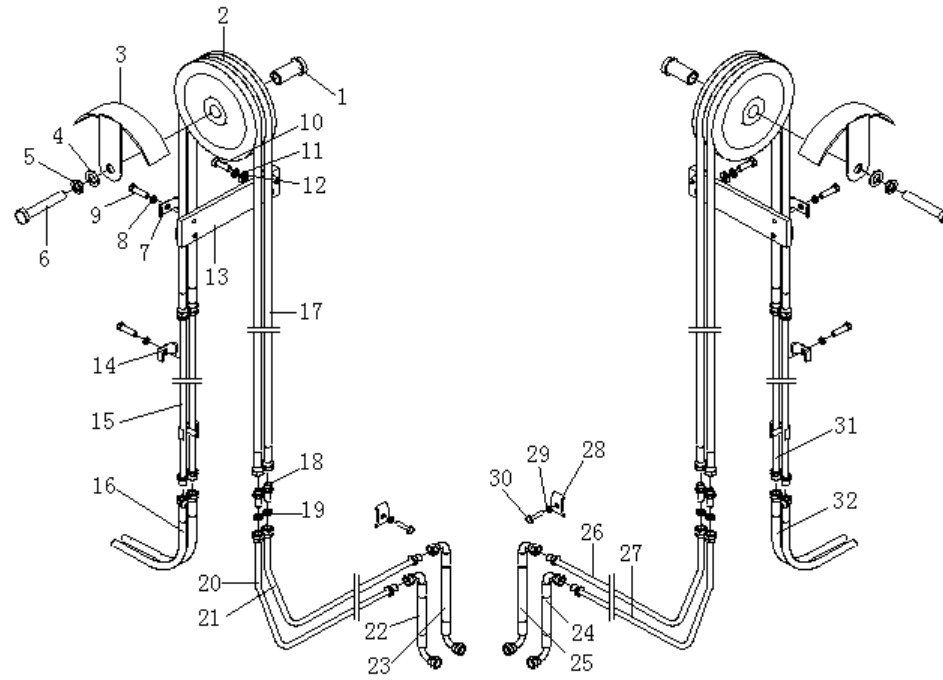


图 9/Fig.9 调距油路/Adjust oil piping

序号 tem	物料码 Part No.	名称	Description	数量 Qty	日期 Date	备注或适用车型 Remarks or Serial No.
1	G160M300-800004-000	轴套	Shaft sleeve	2		
2	G160M300-800003-001	滑轮	Sheave	2		
3	G160M300-801000-000	挡板	Snap ring	2		
4	G0097P1-000020-00	垫圈 20	Washer 20	2		
5	G000093-000020-00	垫圈 20	Washer 20	2		
6	G005782-020110-00	螺栓 M20×110	Bolt M20×110	2		
7	G160M300-800005-000	管夹	Clip	6		
8	G000093-000010-00	垫圈 10	Washer 10	10		
9	G005783-010035-00	螺栓 M10×35	Bolt M10×35	10		
10	G005783-012035-00	螺栓 M12×35	Bolt M12×35	4		
11	G000093-000012-00	垫圈 12	Washer 12	4		
12	G0097P1-000012-00	垫圈 12	Washer 12	4		
13	GX160M300-800001-000	支板	Supporting plate	2		
14	G160M300-800006-000	管夹	Clip	4		
15	AX160M300-801000-000	硬管	Oil pipe	4		系列见表 9-15 Series see table9-15
16	JGG-08B01750Z7-000	胶管接头	Rubber pipe	4		
17	GX160M300-800007-000	胶管接头	Rubber pipe	4		系列见表 9-17 Series see table9-17
18	1.4QN5-800008	接头	Connector	4		
19	1.4QN5-800001	螺母	Nut	4		
20	AX160M300-804000-000	油管	Oil pipe	1		
21	AX160M300-803000-000	油管	Oil pipe	1		
22	GX160M300-800004-000	胶管接头	Rubber pipe	1		
23	GX160M300-800003-000	胶管接头	Rubber pipe	1		
24	GX160M300-800005-000	胶管接头	Rubber pipe	1		
25	GX160M300-800006-000	胶管接头	Rubber pipe	1		
26	AX160M300-806000-000	油管	Oil pipe	1		
27	AX160M300-805000-000	油管	Oil pipe	1		
28	GX160M300-800008-000	管夹	Clip	2		
29	G000093-000008-00	垫圈 8	Washer 8	2		
30	G005783-008035-00	螺栓 M8×35	Bolt M8×35	2		
31	AX160M300-802000-000	硬管	Oil pipe	2		系列见表 9-31 Series see table9-31
32	JGG-08B01830Z8-000	胶管接头	Rubber pipe	2		

图 10 货叉架
Fig.10 Fork shelf

2 级门架
SIMPLEX

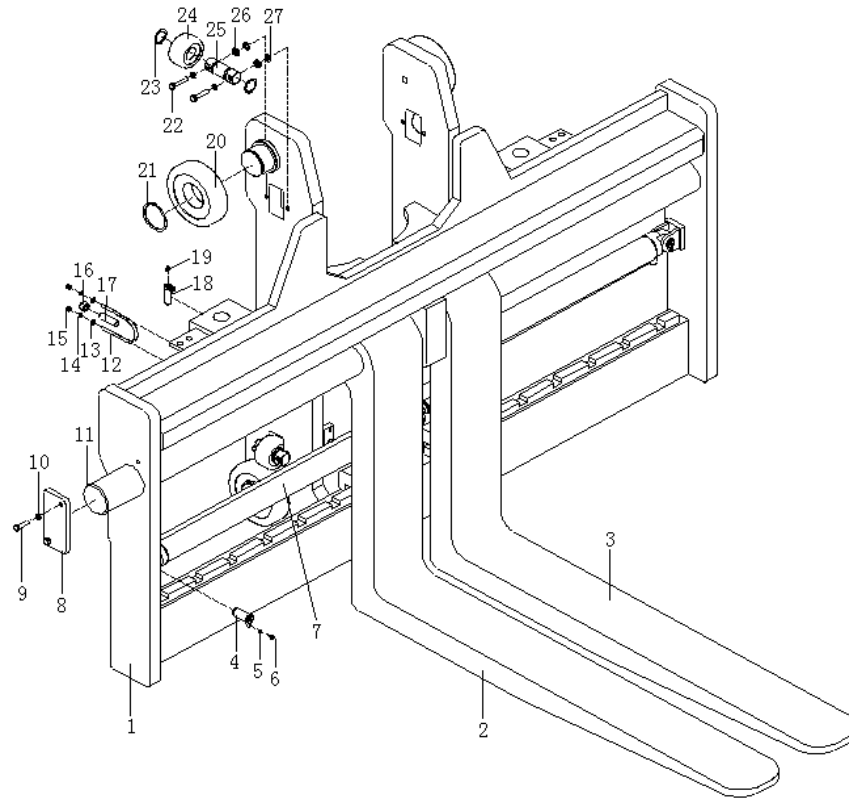


图 11 调距油缸
Fig.11 Adjust cylinder

2 级门架
SIMPLEX

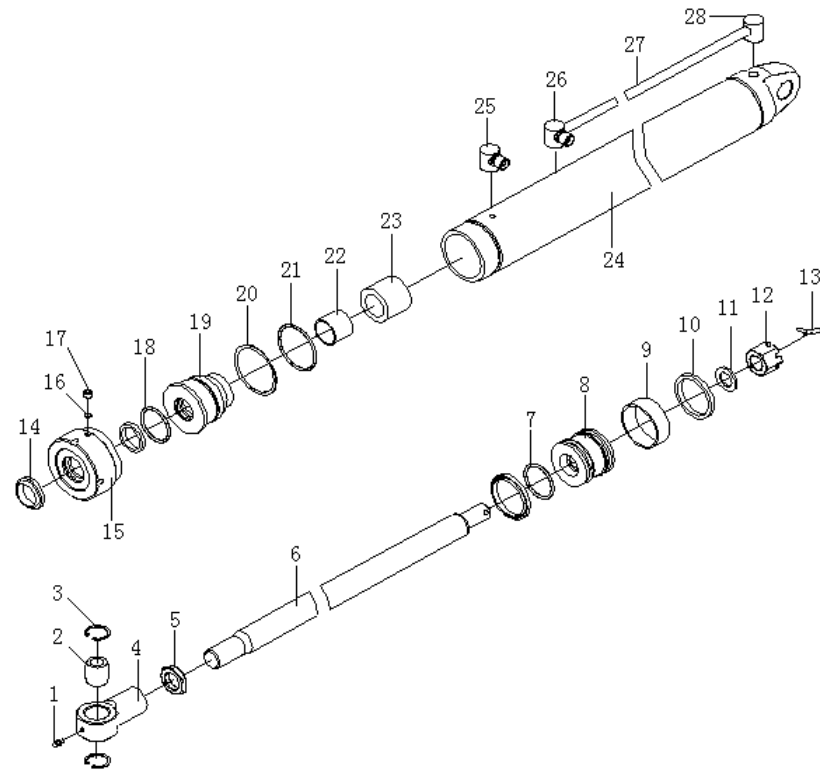


图 11/Fig.11 调距油缸/Adjust cylinder

序号 tem	物料码 Part No.	名称	Description	数量 Qty	日期 Date	备注或适用车型 Remarks or Serial No.
1	G001152-006000-00	油杯 M6	Oil cup M6	1		
2	G009163-170000-01	轴承 GE17ES	Bearing	1		
3	G0893P1-000030-00	挡圈 30	Snap ring 30	2		
4	8M3*304001	耳环	Eye bar	1		
5	8M3*304002	锁紧螺母	Nut	1		
6	G160M300-304001-W00	活塞杆	Piston rod	1		
7	G001235-003803P5-00	O 形密封圈 38×3.5	O-ring 38×3.5	2		
8	8M3*304009	活塞	Piston	1		
9	8M3*304010	支承环	Support ring	1		
10	FU0784L0-G00	OSI 密封圈 D63	OSI-seal ring D63	2		
11	G000848-000022-00	垫圈 22	Washer 22	1		
12	G009457-000022-01	螺母 M22×1.5	Nut M22×1.5	1		
13	G000091-005040-00	销 5×40	Pin 5×40	1		
14	CL0363C0-G00	LBH 防尘圈 d32	LBH-seal ring d32	1		
15	8M3*304004	缸盖	Cylinder cover	1		
16	8M3*304006	尼龙垫片	Nylon gasket	1		
17	G000077-010008-00	螺钉 M10×8	Screw M10×8	1		
18	D2-32-G00	Yx 形密封圈 d32	Yx-seal ring d32	1		
19	8M3*304007	导向套	Guide bush	1		
20	8M3*304005	调整垫圈	Adjust shim	1		
21	G001235-006303P1-00	O 形密封圈 63×3.1	O-ring 63×3.1	1		
22	SF-1-3230-G00	复合衬套 3230	Combination bush	1		
23	GX160M300-904003-W00	隔套	Sleeve	1		
24	G160M300-304100-W00	缸体	Cylinder body	1		
25	G160M300-304005-W00	后腔接头	connector	1		
26	GX160M300-904001-W00	接头	connector	1		
27	GX160M300-904002-W00	钢管	Steel pipe	1		
28	G160M300-304002-W00	过渡接头	connector	1		
K	GX160M300-9040-000-KIT	调距油缸修理包	Adjust cylinder KIT	1		包含 INC:7,10,14,18,21

表
<Optional Parts>

起升高度 Lift Height	1-1	1-2	1-6-1	1-6-2	1-11
3.3m	AX160M330-100000-000	AX160M330-200000-000	AX160M300-020000-000	AX160M300-010000-000	GXR160M330-500000-000
3.6m	AX160M360-100000-000	AX160M360-200000-000	AX160M300-020000-000	AX160M300-010000-000	GXR160M360-500000-000
4.0m	AX160M400-100000-000	AX160M400-200000-000	AX160M300-020000-000	AX160M300-010000-000	GXR160M400-500000-000
4.3m	AX160M430-100000-000	AX160M430-200000-000	AX160M300-020000-000	AX160M300-010000-000	GXR160M430-500000-000
4.5m	AX160M450-100000-000	AX160M450-200000-000	AX160M300-020000-000	AX160M300-010000-000	GXR160M450-500000-000
4.8m	AX160M480-100000-000	AX160M480-200000-000	AX160M480-020000-000	AX160M480-010000-000	GXR160M480-500000-000
5.0m	AX160M500-100000-000	AX160M500-200000-000	AX160M480-020000-000	AX160M480-010000-000	GXR160M500-500000-000
5.5m	AX160M550-100000-000	AX160M550-200000-000	AX160M480-020000-000	AX160M480-010000-000	GXR160M550-500000-000
6.0m	AX160M600-100000-000	AX160M600-200000-000	AX160M480-020000-000	AX160M480-010000-000	GXR160M600-500000-000
6.5m	AX160M650-100000-000	AX160M650-200000-000	AX160M480-020000-000	AX160M480-010000-000	GXR160M650-500000-000
起升高度 Lift Height	1-12	1-17	1-18	1-19	3-1
3.3m	GXR160M330-600000-000	AX160M330-700000-000	LH-3244051-101	AX160M330-800000-000	AX160M330-101000-000
3.6m	GXR160M360-600000-000	AX160M360-700000-000	LH-3244053-101	AX160M360-800000-000	AX160M360-101000-000
4.0m	GXR160M400-600000-000	AX160M400-700000-000	LH-3244057-101	AX160M400-800000-000	AX160M400-101000-000
4.3m	GXR160M430-600000-000	AX160M430-700000-000	LH-3244061-101	AX160M430-800000-000	AX160M430-101000-000
4.5m	GXR160M450-600000-000	AX160M450-700000-000	LH-3244063-101	AX160M450-800000-000	AX160M450-101000-000
4.8m	GXR160M480-600000-000	AX160M480-700000-000	LH-3244065-101	AX160M480-800000-000	AX160M480-101000-000
5.0m	GXR160M500-600000-000	AX160M500-700000-000	LH-3244067-101	AX160M500-800000-000	AX160M500-101000-000
5.5m	GXR160M550-600000-000	AX160M550-700000-000	LH-3244073-101	AX160M550-800000-000	AX160M550-101000-000
6.0m	GXR160M600-600000-000	AX160M600-700000-000	LH-3244079-101	AX160M800-800000-000	AX160M600-101000-000
6.5m	GXR160M650-600000-000	AX160M650-700000-000	LH-3244085-101	AX160M650-800000-000	AX160M650-101000-000

起升高度 Lift Height	4-1	6-1-1	6-1-2	6-2	6-15
3.3m	AX160M330-201000-000	GXR160M330-501000-W00	GXR160M330-601000-W00	GXR160M330-500001-W00	GXR160M330-500002-W00
3.6m	AX160M360-201000-000	GXR160M360-501000-W00	GXR160M360-601000-W00	GXR160M360-500001-W00	GXR160M330-500002-W00
4.0m	AX160M400-201000-000	GXR160M400-501000-W00	GXR160M400-601000-W00	GXR160M400-500001-W00	GXR160M330-500002-W00
4.3m	AX160M430-201000-000	GXR160M430-501000-W00	GXR160M430-601000-W00	GXR160M430-500001-W00	GXR160M430-500002-W00
4.5m	AX160M450-201000-000	GXR160M450-501000-W00	GXR160M450-601000-W00	GXR160M450-500001-W00	GXR160M430-500002-W00
4.8m	AX160M480-201000-000	GXR160M480-501000-W00	GXR160M480-601000-W00	GXR160M480-500001-W00	GXR160M430-500002-W00
5.0m	AX160M500-201000-000	GXR160M500-501000-W00	GXR160M500-601000-W00	GXR160M500-500001-W00	GXR160M430-500002-W00
5.5m	AX160M550-201000-000	GXR160M550-501000-W00	GXR160M550-601000-W00	GXR160M550-500001-W00	GXR160M550-500002-W00
6.0m	AX160M600-201000-000	GXR160M600-501000-W00	GXR160M600-601000-W00	GXR160M600-500001-W00	GXR160M550-500002-W00
6.5m	AX160M650-201000-000	GXR160M650-501000-W00	GXR160M650-601000-W00	GXR160M650-500001-W00	GXR160M650-500002-W00
起升高度 Lift Height	7-3	7-20	8-2	9-15	9-17
3.3m	GX160M300-400006-W00	GXRX160M300-010001-W00	JGD-160B01800-000	AX160M330-801000-000	GX160M330-800007-000
3.6m	GX160M300-400006-W00	GXRX160M300-010001-W00	JGD-160B01950-000	AX160M360-801000-000	GX160M360-800007-000
4.0m	GX160M300-400006-W00	GXRX160M300-010001-W00	JGD-160B02150-000	AX160M400-801000-000	GX160M400-800007-000
4.3m	GX160M300-400006-W00	GXRX160M300-010001-W00	JGD-160B02350-000	AX160M430-801000-000	GX160M430-800007-000
4.5m	GX160M300-400006-W00	GXRX160M300-010001-W00	JGD-160B02450-000	AX160M450-801000-000	GX160M450-800007-000
4.8m	AX160M480-400001-W00	GXRX160M480-010001-W00	JGD-160B02600-000	AX160M480-801000-000	GX160M480-800007-000
5.0m	AX160M480-400001-W00	GXRX160M480-010001-W00	JGD-160B02700-000	AX160M500-801000-000	GX160M500-800007-000
5.5m	AX160M480-400001-W00	GXRX160M550-010001-W00	JGD-160B03000-000	AX160M550-801000-000	GX160M550-800007-000
6.0m	AX160M480-400001-W00	GXRX160M550-010001-W00	JGD-160B03250-000	AX160M600-801000-000	GX160M600-800007-000
6.5m	AX160M480-400001-W00	GXRX160M550-010001-W00	JGD-160B03550-000	AX160M650-801000-000	GX160M650-800007-000

起升高度 Lift Height	9-31				
3.3m	AX160M330-802000-000				
3.6m	AX160M360-802000-000				
4.0m	AX160M400-802000-000				
4.3m	AX160M430-802000-000				
4.5m	AX160M450-802000-000				
4.8m	AX160M480-802000-000				
5.0m	AX160M500-802000-000				
5.5m	AX160M550-802000-000				
6.0m	AX160M600-802000-000				
6.5m	AX160M650-802000-000				
起升高度 Lift Height					
3.3m					
3.6m					
4.0m					
4.3m					
4.5m					
4.8m					
5.0m					
5.5m					
6.0m					
6.5m					



杭叉集团股份有限公司
HANGCHA GROUP CO., LTD.

全国客服热线: 400-884-7888

- 地址: 中国浙江省杭州市临安区相府路 666 号
- 电话: 0571-88926666 (总机号) 85191983
- 传真: 0571-85131772 ■ 邮编: 311305
- 网站: www.zjhc.cn ■ 电子邮件: sales@zjhc.cn

■ Address For: OVERSEAS USERS

- Address: 666 Xiangfu Road, Lin'an, Hangzhou, Zhejiang, China
- ZIP: 311305
- Fax: 0086-571-88926789 0086-571-88132890
- Web: <http://www.hcforlift.com> ■ E-mail: sales@hcforlift.com