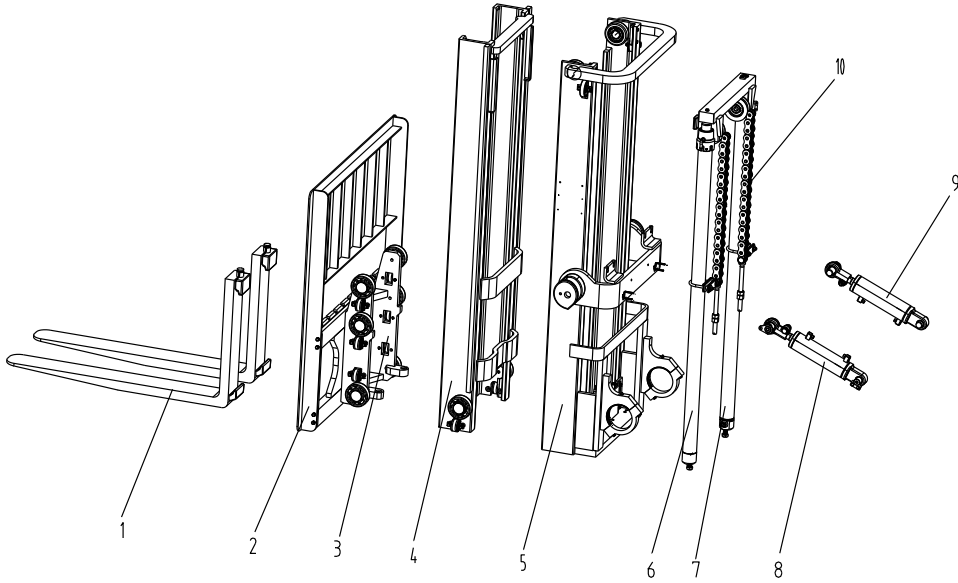


FORKLIFT PARTS CATALOGUE



升降机构 (标准系列门架)

Loading System



| 序号 Item No. | 零件图号 Part No. | 零部件名称 Part Description | 规格尺寸 Description | 数量 Q'ty | 备注 Remark |
|----------------|------------------|---------------------------|---------------------|------------|----------------------------------|
| 01 | 15RA17B00000 | 货叉总成 Fork ass'y | | 2 | |
| 02 | 15W1800000 | 挡货架 Backrest | | 1 | |
| 03 | 15RA1FA300000 | 货叉架 Lift bracket | | 1 | |
| 04 | 15RA1DA200000 | 内门架 Inner mast | | 1 | 起升高度 Lifting height 2500mm |
| 04 | 15RA1EA200000 | 内门架 Inner mast | | 1 | 起升高度 Lifting height 2700mm |
| 04 | 15RA1FA200000 | 内门架 Inner mast | | 1 | 起升高度 Lifting height 3000mm |
| 04 | 15RA1GA200000 | 内门架 Inner mast | | 1 | 起升高度 Lifting height 3300mm |
| 04 | 15RA1HA200000 | 内门架 Inner mast | | 1 | 起升高度 Lifting height 3500mm |
| 04 | 15RA1JA200000 | 内门架 Inner mast | | 1 | 起升高度 Lifting height 4000mm |
| 04 | 15RA1LA200000 | 内门架 Inner mast | | 1 | 起升高度 Lifting height 4500mm |

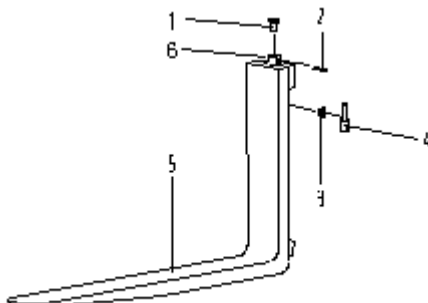
| 序号 Item No. | 零件图号 Part No. | 零部件名称 Part Description | 规格尺寸 Description | 数量 Q'ty | 备注 Remark |
|----------------|---------------------|------------------------------|---------------------|------------|----------------------------------|
| 04 | 15RA1NA200000 | 内门架 Inner mast | | 1 | 起升高度 Lifting height 5000mm |
| 05 | 15WAB11DA10000 0 | 外门架 Outer mast | | 1 | 起升高度 Lifting height 2500mm |
| 05 | 15WAB11EA100000 | 外门架 Outer mast | | 1 | 起升高度 Lifting height 2700mm |
| 05 | 15WAB11FA100000 | 外门架 Outer mast | | 1 | 起升高度 Lifting height 3000mm |
| 05 | 15WAB11GA100000 | 外门架 Outer mast | | 1 | 起升高度 Lifting height 3300mm |
| 05 | 15WAB11HA100000 | 外门架 Outer mast | | 1 | 起升高度 Lifting height 3500mm |
| 05 | 15WAB11JA100000 | 外门架 Outer mast | | 1 | 起升高度 Lifting height 4000mm |
| 05 | 15WAB11LA100000 | 外门架 Outer mast | | 1 | 起升高度 Lifting height 4500mm |
| 05 | 15WAB11NA100000 | 外门架 Outer mast | | 1 | 起升高度 Lifting height 5000mm |
| 06 | 1.0TCMS-2500-00/Z | 左起升油缸 Lift cylinder L. H. | | 1 | 起升高度 Lifting height 2500mm |
| 06 | 1.0TCMS-2700-00/Z | 左起升油缸 Lift cylinder L. H. | | 1 | 起升高度 Lifting height 2700mm |
| 06 | 1.0TCMS-3000-00/Z | 左起升油缸 Lift cylinder L. H. | | 1 | 起升高度 Lifting height 3000mm |
| 06 | 1.0TCMS-3300-00/Z | 左起升油缸 Lift cylinder L. H. | | 1 | 起升高度 Lifting height 3300mm |
| 06 | 1.0TCMS-3500-00/Z | 左起升油缸 Lift cylinder L. H. | | 1 | 起升高度 Lifting height 3500mm |
| 06 | 1.0TCMS-4000-00/Z | 左起升油缸 Lift cylinder L. H. | | 1 | 起升高度 Lifting height 4000mm |
| 06 | 1.0TCMS-4500-00/Z | 左起升油缸 Lift cylinder L. H. | | 1 | 起升高度 Lifting height 4500mm |
| 06 | 1.0TCMS-5000-00/Z | 左起升油缸 Lift cylinder L. H. | | 1 | 起升高度 Lifting height 5000mm |
| 07 | 1.0TCMS-2500-00/Y | 右起升油缸 Lift cylinder R. H. | | 1 | 起升高度 Lifting height 2500mm |

FORKLIFT PARTS CATALOGUE

| 序号 Item No. | 零件图号 Part No. | 零部件名称 Part Description | 规格尺寸 Description | 数量 Q'ty | 备注 Remark |
|----------------|-------------------|------------------------------|---------------------|------------|----------------------------------|
| 07 | 1.0TCMS-2700-00/Y | 右起升油缸 Lift cylinder R. H. | | 1 | 起升高度 Lifting height 2700mm |
| 07 | 1.0TCMS-3000-00/Y | 右起升油缸 Lift cylinder R. H. | | 1 | 起升高度 Lifting height 3000mm |
| 07 | 1.0TCMS-3300-00/Y | 右起升油缸 Lift cylinder R. H. | | 1 | 起升高度 Lifting height 3300mm |
| 07 | 1.0TCMS-3500-00/Y | 右起升油缸 Lift cylinder R. H. | | 1 | 起升高度 Lifting height 3500mm |
| 07 | 1.0TCMS-4000-00/Y | 右起升油缸 Lift cylinder R. H. | | 1 | 起升高度 Lifting height 4000mm |
| 07 | 1.0TCMS-4500-00/Y | 右起升油缸 Lift cylinder R. H. | | 1 | 起升高度 Lifting height 4500mm |
| 07 | 1.0TCMS-5000-00/Y | 右起升油缸 Lift cylinder R. H. | | 1 | 起升高度 Lifting height 5000mm |
| 08 | 15W-00E/Z | 左倾斜油缸 Tilt cylinder L. H. | | 1 | |
| 09 | 15W-00E/Y | 右倾斜油缸 Tilt cylinder R. H. | | 1 | |
| 10 | 15RA1DA900000 | 链条总成 Chain ass'y | | 2 | 起升高度 Lifting height 2500mm |
| 10 | 15RA1EA900000 | 链条总成 Chain ass'y | | 2 | 起升高度 Lifting height 2700mm |
| 10 | 15RA1FA900000 | 链条总成 Chain ass'y | | 2 | 起升高度 Lifting height 3000mm |
| 10 | 15RA1GA900000 | 链条总成 Chain ass'y | | 2 | 起升高度 Lifting height 3300mm |
| 10 | 15RA1HA900000 | 链条总成 Chain ass'y | | 2 | 起升高度 Lifting height 3500mm |
| 10 | 15RA1JA900000 | 链条总成 Chain ass'y | | 2 | 起升高度 Lifting height 4000mm |
| 10 | 15RA1LA900000 | 链条总成 Chain ass'y | | 2 | 起升高度 Lifting height 4500mm |
| 10 | 15RA1NA900000 | 链条总成 Chain ass'y | | 2 | 起升高度 Lifting height 5000mm |



货叉总成
Fork Ass'y

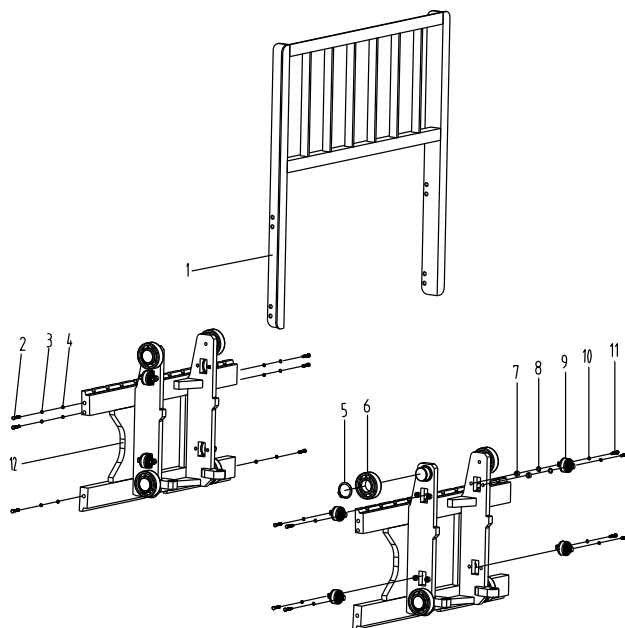


| 序号 Item No. | 零件图号 Part No. | 零部件名称 Part Description | 规格尺寸 Description | 数量 Q'ty | 备注 Remark |
|----------------|------------------|---------------------------|---------------------|------------|--------------|
| 01 | 20W1120003 | 把手 Handle | | 1 | |
| 02 | GB119.2 | 销 Pin | B4×55 | 1 | |
| 03 | 20W1120001 | 弹簧 Spring | | 1 | |
| 04 | 20W1120004 | 心轴 Positioning pin | | 1 | |
| 05 | 15RA17A10000 | 货叉 Fork | | 2 | 900mm |
| 05 | 15RA17B10000 | 货叉 Fork | | 2 | 1000mm |
| 05 | 15RA17C10000 | 货叉 Fork | | 2 | 1070mm |
| 05 | 15RA17D10000 | 货叉 Fork | | 2 | 1150mm |
| 05 | 15RA17E10000 | 货叉 Fork | | 2 | 1200mm |
| 05 | 15RA17F10000 | 货叉 Fork | | 2 | 1300mm |
| 05 | 15RA17G10000 | 货叉 Fork | | 2 | 1400mm |
| 05 | 15RA17H10000 | 货叉 Fork | | 2 | 1500mm |
| 06 | 20W1120002 | 销座 Seat | | 2 | |

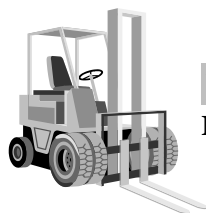


货叉架、挡货架

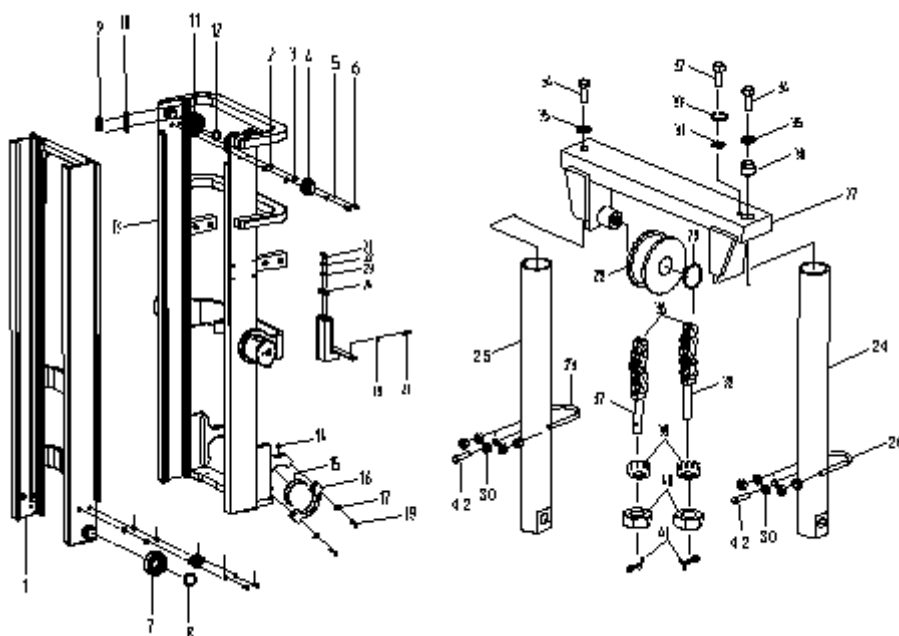
Lift bracket、Backrest



| 序号 Item No. | 零件图号 Part No. | 零部件名称 Part Description | 规格尺寸 Description | 数量 Q'ty | 备注 Remark |
|----------------|------------------|---------------------------|---------------------|------------|--------------|
| 01 | 15W1800000 | 挡货架 Backrest | | 1 | |
| 02 | GB5783 | 螺栓 Bolt | M12×25 | 6 | |
| 03 | GB93 | 垫圈 Washer | 12 | 6 | |
| 04 | GB97.1 | 垫圈 Washer | 12 | 6 | |
| 05 | GB894.1 | 挡圈 Snap ring | 40 | 4 | |
| 06 | Y30208 | 主滚轮轴承 Roller | | 4 | |
| 07 | 15W1LG000008 | 垫块 Spacer | | 8 | |
| 08 | 15W1LG000009 | 垫圈 Washer | | 16 | |
| 09 | CN-2 | 侧滚轮轴承 Side roller | | 4 | |
| 10 | GB93 | 垫圈 Washer | 10 | 8 | |
| 11 | GB5786 | 螺栓 Bolt | M10×1.25×40 | 8 | |
| 12 | 15RA1FA310000 | 货叉架体 Lift bracket | | 1 | |



内门架、外门架、起升链条
Inner mast, Outer mast, Chain



| 序号 Item No. | 零件图号 Part No. | 零部件名称 Part Description | 规格尺寸 Description | 数量 Q'ty | 备注 Remark |
|----------------|------------------|---------------------------|---------------------|------------|----------------------------------|
| 01 | 15RA1DA200000 | 内门架 Inmast | | 1 | 起升高度 Lifting height 2500mm |
| 01 | 15RA1EA200000 | 内门架 Inmast | | 1 | 起升高度 Lifting height 2700mm |
| 01 | 15RA1FA200000 | 内门架 Inmast | | 1 | 起升高度 Lifting height 3000mm |
| 01 | 15RA1GA200000 | 内门架 Inmast | | 1 | 起升高度 Lifting height 3300mm |
| 01 | 15RA1HA200000 | 内门架 Inmast | | 1 | 起升高度 Lifting height 3500mm |
| 01 | 15RA1JA200000 | 内门架 Inmast | | 1 | 起升高度 Lifting height 4000mm |
| 01 | 15RA1LA200000 | 内门架 Inmast | | 1 | 起升高度 Lifting height 4500mm |
| 01 | 15RA1NA200000 | 内门架 Inmast | | 1 | 起升高度 Lifting height 5000mm |
| 02 | 15W1LG000008 | 垫块 Spacer | | 8 | |

FORKLIFT PARTS CATALOGUE

| 序号 Item No. | 零件图号 Part No. | 零部件名称 Part Description | 规格尺寸 Description | 数量 Q'ty | 备注 Remark |
|----------------|------------------|---------------------------|---------------------|------------|----------------------------------|
| 03 | 15W1LG000009 | 垫圈 Washer | | 8 | |
| 04 | CN-2 | 侧滚轮轴承 Side roller | | 4 | |
| 05 | GB93 | 垫圈 Washer | 10 | 8 | |
| 06 | GB5786 | 螺栓 Bolt | M10×1.25×40 | 8 | |
| 07 | Y30208 | 主滚轮轴承 Side roller | | 2 | |
| 08 | GB894.1 | 挡圈 Snap ring | 40 | 2 | |
| 09 | 30X1010000 | 限位滑块 Slipper | | 2 | |
| 10 | 30X1000006 | 垫片 Shim | | 4 | |
| 11 | 180706K | 限位滚轮轴承 Side roller | | 2 | |
| 12 | GB894.1 | 挡圈 Snap ring | 30 | 2 | |
| 13 | 15WAB11DA100000 | 外门架 Outer mast | | 1 | 起升高度 Lifting height 2500mm |
| 13 | 15WAB11EA100000 | 外门架 Outer mast | | 1 | 起升高度 Lifting height 2700mm |
| 13 | 15WAB11FA100000 | 外门架 Outer mast | | 1 | 起升高度 Lifting height 3000mm |
| 13 | 15WAB11GA100000 | 外门架 Outer mast | | 1 | 起升高度 Lifting height 3300mm |
| 13 | 15WAB11HA100000 | 外门架 Outer mast | | 1 | 起升高度 Lifting height 3500mm |
| 13 | 15WAB11JA100000 | 外门架 Outer mast | | 1 | 起升高度 Lifting height 4000mm |
| 13 | 15WAB11LA100000 | 外门架 Outer mast | | 1 | 起升高度 Lifting height 4500mm |
| 13 | 15WAB11NA100000 | 外门架 Outer mast | | 1 | 起升高度 Lifting height 5000mm |

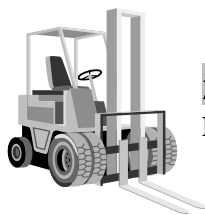
| 序号 Item No. | 零件图号 Part No. | 零部件名称 Part Description | 规格尺寸 Description | 数量 Q'ty | 备注 Remark |
|----------------|-------------------|---------------------------|---------------------|------------|----------------------------------|
| 14 | JB/T7940.1 | 油杯 Grease cup | M8×1 | 2 | |
| 15 | 15RA1000015 | 轴衬 Bushing | | 1 | |
| 16 | 15RA1000014 | 支座盖 Cap | | 2 | |
| 17 | GB93 | 垫圈 Washer | 14 | 4 | |
| 18 | GB5785 | 螺栓 Bolt | M14×1.5×40 | 4 | |
| 19 | GB93 | 垫圈 Washer | 10 | 2 | |
| 20 | GB5786 | 螺栓 Bolt | M10×1.25×30 | 2 | |
| 21 | GB65 | 螺钉 Screw | M6×12 | 2 | |
| 22 | GB93 | 垫圈 Washer | 6 | 2 | |
| 23 | 30X1000008 | 限位块 Cushion | | 1 | |
| 24 | 1.0TCMS-2500-10/Y | 右起升缸体 Cylinder R. H | | 1 | 起升高度 Lifting height 2500mm |
| 24 | 1.0TCMS-2700-10/Y | 右起升缸体 Cylinder R. H | | 1 | 起升高度 Lifting height 2700mm |
| 24 | 1.0TCMS-3000-10/Y | 右起升缸体 Cylinder R. H | | 1 | 起升高度 Lifting height 3000mm |
| 24 | 1.0TCMS-3300-10/Y | 右起升缸体 Cylinder R. H | | 1 | 起升高度 Lifting height 3300mm |
| 24 | 1.0TCMS-3500-10/Y | 右起升缸体 Cylinder R. H | | 1 | 起升高度 Lifting height 3500mm |
| 24 | 1.0TCMS-4000-10/Y | 右起升缸体 Cylinder R. H | | 1 | 起升高度 Lifting height 4000mm |
| 24 | 1.0TCMS-4500-10/Y | 右起升缸体 Cylinder R. H | | 1 | 起升高度 Lifting height 4500mm |
| 24 | 1.0TCMS-5000-10/Y | 右起升缸体 Cylinder R. H | | 1 | 起升高度 Lifting height 5000mm |
| 25 | 1.0TCMS-2500-10/Z | 左起升缸体 Cylinder R. H | | 1 | 起升高度 Lifting height 2500mm |

FORKLIFT PARTS CATALOGUE

| 序号 Item No. | 零件图号 Part No. | 零部件名称 Part Description | 规格尺寸 Description | 数量 Q'ty | 备注 Remark |
|----------------|-------------------|---------------------------|---------------------|------------|----------------------------------|
| 25 | 1.0TCMS-2700-10/Z | 左起升缸体 Cylinder R. H | | 1 | 起升高度 Lifting height 2700mm |
| 25 | 1.0TCMS-3000-10/Z | 左起升缸体 Cylinder R. H | | 1 | 起升高度 Lifting height 3000mm |
| 25 | 1.0TCMS-3300-10/Z | 左起升缸体 Cylinder R. H | | 1 | 起升高度 Lifting height 3300mm |
| 25 | 1.0TCMS-3500-10/Z | 左起升缸体 Cylinder R. H | | 1 | 起升高度 Lifting height 3500mm |
| 25 | 1.0TCMS-4000-10/Z | 左起升缸体 Cylinder R. H | | 1 | 起升高度 Lifting height 4000mm |
| 25 | 1.0TCMS-4500-10/Z | 左起升缸体 Cylinder R. H | | 1 | 起升高度 Lifting height 4500mm |
| 25 | 1.0TCMS-5000-10/Z | 左起升缸体 Cylinder R. H | | 1 | 起升高度 Lifting height 5000mm |
| 26 | 15RA1000011 | U型螺栓 U-Bolt | | 2 | |
| 27 | 15RA1500000 | 活动梁 Traveling girder | | 1 | |
| 28 | 780708K | 链轮 Chain Wheel | | 2 | |
| 29 | GB894.1 | 挡圈 Ring, Snap | 40 | 4 | |
| 30 | GB6173 | 螺母 Nut | M20×1.5 | 2 | |
| 31 | 30X1000012 | 卡板 Plate, Key | | 2 | |
| 32 | GB5786 | 螺栓 Bolt | M12×1.25×25 | 1 | |
| 33 | GB93 | 垫圈 Washer | 12 | 1 | |
| 34 | GB5786 | 螺栓 Bolt | M16×1.5×50 | 2 | |
| 35 | GB93 | 垫圈 Washer | 16 | 2 | |
| 36 | GB/T6074 | 链条 Chain | LH1223-107 | 1 | 起升高度 Lifting height 2500mm |
| 36 | GB/T6074 | 链条 Chain | LH1223-117 | 1 | 起升高度 Lifting height 2700mm |

DALIAN FORKLIFT CO., LTD.

| 序号 Item No. | 零件图号 Part No. | 零部件名称 Part Description | 规格尺寸 Description | 数量 Q'ty | 备注 Remark |
|----------------|------------------|----------------------------|---------------------|------------|----------------------------------|
| 36 | GB/T6074 | 链条 Chain | LH1223-133 | 1 | 起升高度 Lifting height 3000mm |
| 36 | GB/T6074 | 链条 Chain | LH1223-149 | 1 | 起升高度 Lifting height 3300mm |
| 36 | GB/T6074 | 链条 Chain | LH1223-159 | 1 | 起升高度 Lifting height 3500mm |
| 36 | GB/T6074 | 链条 Chain | LH1223-185 | 1 | 起升高度 Lifting height 4000mm |
| 36 | GB/T6074 | 链条 Chain | LH1223-219 | 1 | 起升高度 Lifting height 4500mm |
| 36 | GB/T6074 | 链条 Chain | LH1223-245 | 1 | 起升高度 Lifting height 5000mm |
| 37 | 15RA1900001 | 链条接头 Pin, Chain, anchor | | 1 | |
| 38 | 15RA1900003 | 链条接头 Pin, Chain, anchor | | 1 | |
| 39 | 15RA1900004 | 球形螺母 Ball-Nut | | 2 | |
| 40 | GB6171 | 螺母 Nut | M16×1.5 | 2 | |
| 41 | GB91 | 销 Pin | 3.2×40 | 2 | |
| 42 | 15RA1500000 | 调节螺栓 Adjusted Bolt | | 2 | |



起升油缸
Lift Cylinder

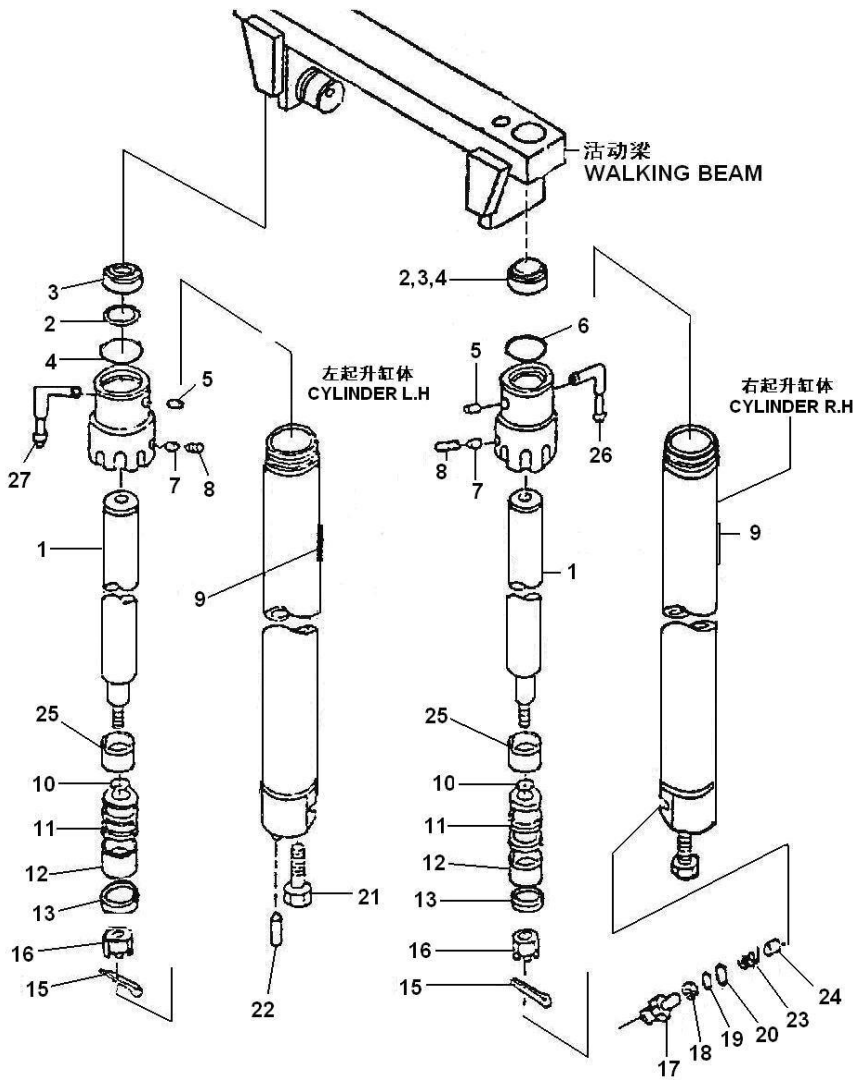
整机可装配的起升油缸有两种：一种为陕西燎原液压件厂生产；一种为晋江池店叉车配件厂生产。您在查阅这部分的零件目录时，请先确认您的叉车上安装的是哪一种。有“燎原液压”字样标签的为陕西燎原液压件厂的举升油缸。有“晋江机械有限公司”字样标签的为晋江池店叉车配件厂的举升油缸。对应的举升油缸零件目录共分两部分，请注意确认。为保证准确请您在选择备件时一定要提供整机出厂编号。由此造成的不便请您见谅！

LIFT CYLINDER

In this chapter, you can see two kinds of lift cylinder and the Parts Manual of SHANXI LIAOYUAN HYDRAULIC PRESSURE CO., LTD. Another Manual of JINJIANG CHIDIAN FORKLIFT-FITTINGS FACTORY . You need to know the type of the lift cylinder on your forklift truck, before reading this chapter. If there is a label marks the letters “燎原液压” on the cylinder body ,it is made of SHANXI LIAOYUAN HYDRAULIC PRESSURE CO., LTD. So you can read the part 2. And if there is a label marks the letters “晋江机械有限公司” on the cylinder body, it is made of JINJIANG CHIDIAN FORKLIFT-FITTINGS FACTORY. So you can read the part 1. To avoid mistake, when ordering parts, give the DALIAN forklift trucks dealer or distributor the serial number of the forklift truck .Beg your pardon for the discomfort with it !

燎原起升油缸

LiaoYuan Lift Cylinder Parts



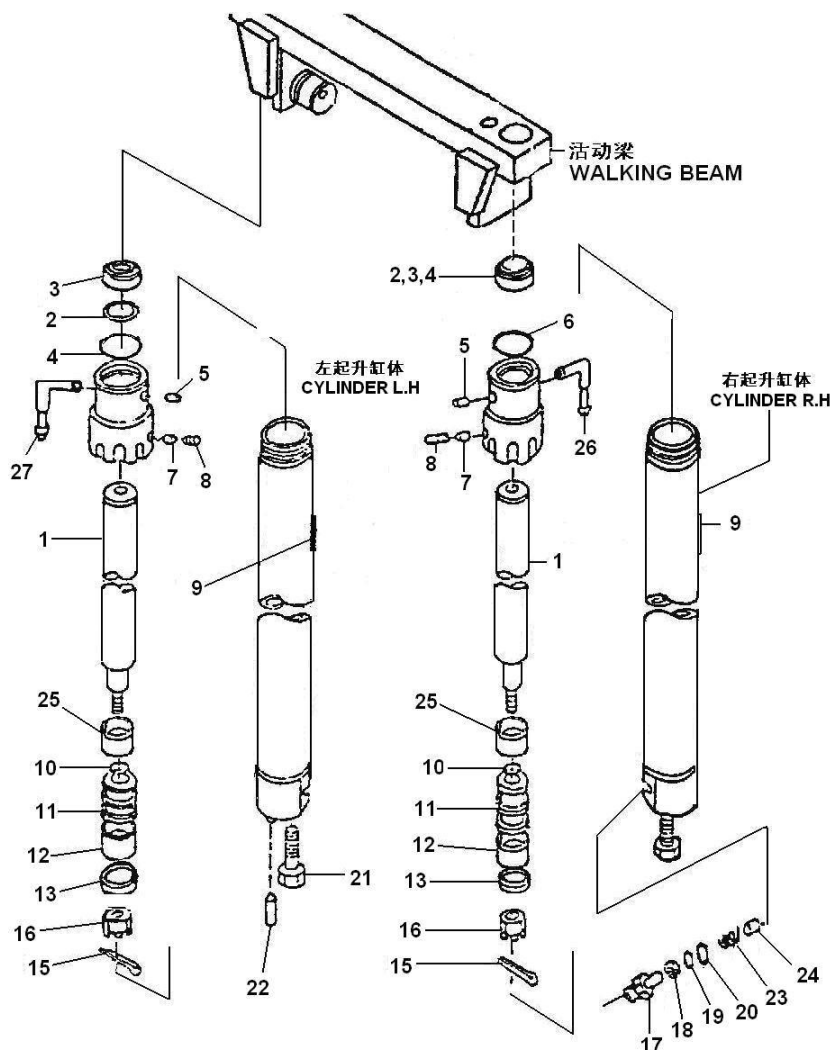
| 序号 Item No. | 零件图号 Part No. | 零部件名称 Part Description | 规格尺寸 Description | 数量 Q'ty | 备注 Remark |
|----------------|---------------------|---------------------------|---------------------|------------|--------------|
| 01 | 1.0DCS-S-02 | 活塞杆 Rod, Piston | | 2 | |
| 02 | Br1418E5 | DKB 型防尘圈 Seal, Dust | | 2 | |
| 03 | 1.0DCS-S-20 | 缸盖 Cylinder | | 2 | |
| 04 | FU2472S0 | USI 型密封圈 Ring | | 2 | |
| 05 | Q/11AJ08.7-90 | 堵塞 Plug | | 2 | |
| 06 | 35505000J1/GB3452.1 | O 型圈 O-Ring | | 2 | |
| 07 | Q/11AJ08.6-90 | 垫子 Cushion | | 4 | |

FORKLIFT PARTS CATALOGUE

| 序号 Item No. | 零件图号 Part No. | 零部件名称 Part Description | 规格尺寸 Description | 数量 Q'ty | 备注 Remark |
|----------------|----------------------|---------------------------|---------------------|------------|--------------|
| 08 | GB80 | 螺钉 Bolt | M6×8 | 4 | |
| 09 | | 标牌 Scutcheon | | 2 | |
| 10 | 1.0DCS-S-03 | 活塞 Piston | | 1 | |
| 11 | 35502500.J1/GB3452.1 | O 型圈 O-Ring | | 2 | |
| 12 | 45Q/11AJ08.9 | 支承圈 Bushing Ring | | 2 | |
| 13 | FU0563L0 | OSI 型密封圈 OSI-Ring | | 2 | |
| 15 | GB91 | 开口销 Uncork Pin | 4×40 | | |
| 16 | GB9458 | 螺母 Nut | M18×1.5 | 2 | |
| 17 | 15W-3000-01 | 管嘴 Fitting | | 1 | |
| 18 | 15W-3000-04 | 压紧螺母 Compaction-Nut | | 1 | |
| 19 | 15W-3000-03 | 垫圈 Washer | | 1 | |
| 20 | 16A4-175-17-2.5 | O 型圈 O-Ring | | 2 | |
| 21 | 35Q/11AJ08.15 | 螺钉 Bolt | | 2 | |
| 22 | Q/11AJ08.16 | 销 Pin | | 2 | |
| 23 | Q/11AJ08.12 | 弹簧 Spring | | 1 | |
| 24 | 1.00/11AJ08.13 | 滑阀 Sliding Sleeve | | 1 | |
| 25 | 1.0DCS-S-01 | 限位套 Bushing | | 2 | |
| 26 | Q/11AJ08.5-90 | 管嘴 Fitting | | 2 | |
| 27 | 15W-3000-02 | 管嘴 Fitting | | 1 | |

晋江举升油缸

JinJiang Lift Cylinder Parts



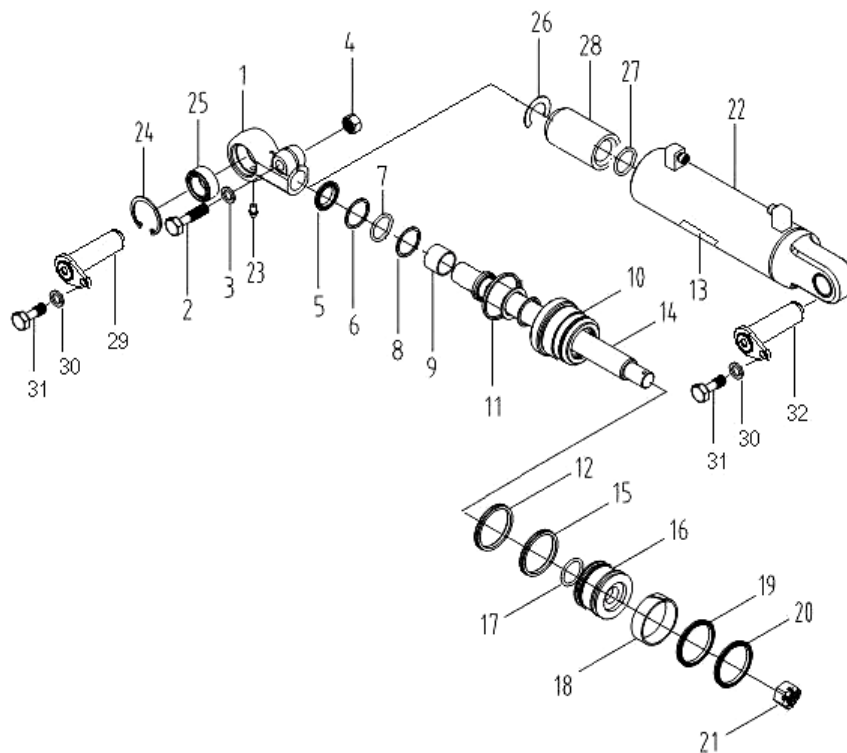
| 序号 Item No. | 零件图号 Part No. | 零部件名称 Part Description | 规格尺寸 Description | 数量 Q'ty | 备注 Remark |
|----------------|--------------------|---------------------------|---------------------|------------|--------------|
| 01 | 1.0TCMS-3000-01/ZY | 活塞杆 Rod, Piston | | 2 | |
| 02 | DKB | 铁壳型防尘圈 Seal, Dust | d36 | 2 | |
| 03 | 1.0TCMS-3000-02/ZY | 缸盖 Cylinder | | 2 | |
| 04 | D2 36 | 轴用 Y 型圈 Y-Ring | 36×46×10 | 2 | |
| 05 | 2.5TCMS-3000-02/ZY | 堵塞 Plug | | 2 | |
| 06 | GB3452.1 | O 型圈 O-Ring | 52×3.55 | 2 | |
| 07 | | 垫子 Cushion | | 4 | |

FORKLIFT PARTS CATALOGUE

| 序号 Item No. | 零件图号 Part No. | 零部件名称 Part Description | 规格尺寸 Description | 数量 Q'ty | 备注 Remark |
|----------------|--------------------|---------------------------|---------------------|------------|--------------|
| 08 | GB67 | 螺钉 Bolt | | 2 | |
| 09 | | 标牌 Scutcheon | | 2 | |
| 10 | 1.0TCMS-3000-03/ZY | 活塞 Piston | | 1 | |
| 11 | GB1235 | O 型圈 O-Ring | 30×3.1 | 2 | |
| 12 | 1.0TCMS-3000-04/ZY | 支承圈 Bushing Ring | | 2 | |
| 13 | D1 35A1 | 孔用 Y 型圈 Y-Ring | 45×35×6 | 2 | |
| 15 | GB91 | 开口销 Uncork Pin | 4×40 | | |
| 16 | GB9458 | 螺母 Nut | M18×1.5 | 2 | |
| 17 | 2.5TCMS-3000-07/ZY | 直管接头 Vitta Joint | | 2 | |
| 18 | SF-1 | 钢背轴承 Compaction-Nut | 36×40×25 | 1 | |
| 20 | GB3452.1 | O 形圈 O-Ring | 17×2.65 | 2 | |
| 21 | GB8785 | 螺栓 Bolt | M12×1.25×40 | 2 | |
| 22 | GB119 | 销 Pin | 10×30 | 2 | |
| 23 | 2.5TCMS-3000-08/ZY | 弹簧 Spring | | 1 | |
| 24 | 2.5TCMS-3000-09/ZY | 滑阀 Sliding Sleeve | | 1 | |
| 25 | 2.5TCMS-3000-10/ZY | 管嘴 Fitting | | 2 | |



倾斜油缸
Tilt Cylinder



| 序号 No. | 代号 PART NO. | 零件名称 PART NAME | 说明 DESCRIPTION | 数量 Q' TY | 备注 REMARK |
|-----------|----------------|----------------------------|-------------------|-------------|--------------|
| 1 | 3.0TCMQ-02D | 接头 SCOKET CYLINDER | | 2 | |
| 2 | GB5782 | 螺栓 BOLT | M14×55 | 2 | |
| 3 | GB859 | 垫片 SHIM | 14 | 2 | |
| 4 | GB6170 | 螺母 NUT | M14 | 2 | |
| 5 | CL0363C0 | LBH 型防尘圈 LBH-DUST SEAL | | 2 | |
| 6 | 15W-07E | 保护圈 SNAP RING | | 2 | |
| 7 | GB3452.1 | O 形圈 O-RING | 35503150-试 5171 | 2 | |
| 8 | FU2055S0 | USI 型密封圈 USI RING | | 2 | |
| 9 | CC63-16 | 挡圈 SNAP RING | | 2 | |
| 10 | 15W-01E | 导向套 GUIDE SLEEVE | | 2 | |
| 11 | GB3452.1 | O 形圈 O-RING | 35505600-试 5171 | 2 | |
| 12 | 15W-05E | 保护圈 SNAP RING | | 2 | |
| 13 | -3 | 通用标牌 CURRENCY SCUTCHEON | | 2 | |

叉车零件目录

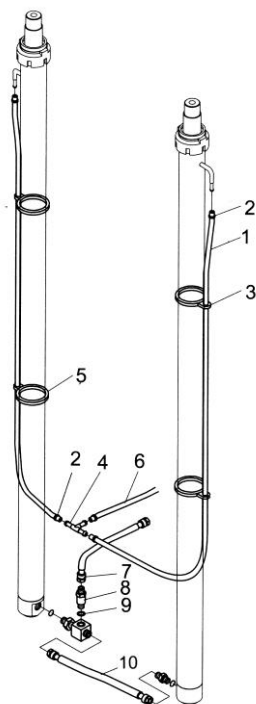
FORKLIFT PARTS CATALOGUE

| 序号 No. | 零件图号 Part No. | 零部件名称 Part Description | 说明 DESCRIPTION | 数量 Q'ty | 备注 Remark |
|--------------------|------------------|---------------------------|-------------------|------------|--------------|
| 14 | 15W-02E | 活塞杆 PISTON GROUP | | 2 | |
| 15 | 15W-011 | 限位套 SLEEVE | | 2 | 15W-00E1 |
| 16 | 15W-03E | 活塞 PISTON | | 2 | |
| 17 | GB3452.1 | O形圈 O-RING | 18002500-试 5171 | 2 | |
| 18 | FU0784L0 | OSI型密封圈 OSI-RING | | 2 | |
| 19 | 15W-06E | 保护圈 SNAP RING | | 2 | |
| 20 | 15W-04E | 支承圈 WEARING | | 2 | |
| 21 | GB889 | 螺母 NUT | M24×2 | 2 | |
| 22 | 15W-10E/ZY | 缸体 CYLINDER | | 2 | |
| 23 | JB/T7940.1 | 油杯 OIL CUP | M8×1 | 2 | |
| 24 | GB893.1 | 孔用弹簧挡圈 RING | 47 | 2 | |
| 25 | GB304.5 | 关节轴承 BUSHING | GE30ES | 2 | |
| 26 | 30XDB1FA000005 | 调整垫 SHIM | | 2组/G | MLH≥3.7M |
| 27 | GB3452.1 | O形密封圈 O-RING | 31.5×3.55 | 4 | MLH≥3.7M |
| 28 | 15WAB75FA00001 | 限位套 SLEEVE | | 2 | MLH≥3.7M |
| 29 | 30XDB1FA600000 | 倾斜油缸销轴总成 PIN | | 2 | |
| 30 | GB93 | 垫圈 SPRING WASHER | 10 | 4 | |
| 31 | GB5786 | 螺栓 BOLT | M10×1.25×20 | 4 | |
| 32 | 15RA1600000 | 倾斜油缸销轴总成 PIN | | 2 | |
| 未示 NOT SHOWN | Q/11AJ03067 | 堵帽 PLUG | M14×1.5 | 2 | 15W-00E |
| | 15W-30E | 堵帽 PLUG | | 2 | 15W-00E1 |



门架管路系统

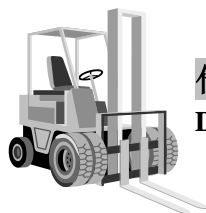
Hydraulic System mast



| 序号 Item No. | 零件图号 Part No. | 零部件名称 Part Description | 规格尺寸 Description | 数量 Q'ty | 备注 Remark |
|----------------|------------------|---------------------------|---------------------|------------|----------------------------------|
| 01 | 15WAB72DA00001 | 织物液压胶管 Tube vinyl | | 2 | 起升高度 Lifting height 2500mm |
| 01 | 15WAB72EA00001 | 织物液压胶管 Tube vinyl | | 2 | 起升高度 Lifting height 2700mm |
| 01 | 15WAB72FA00001 | 织物液压胶管 Tube vinyl | | 2 | 起升高度 Lifting height 3000mm |
| 01 | 15WAB72GA00001 | 织物液压胶管 Tube vinyl | | 2 | 起升高度 Lifting height 3300mm |
| 01 | 15WAB72HA00001 | 织物液压胶管 Tube vinyl | | 2 | 起升高度 Lifting height 3500mm |
| 01 | 15WAB72JA00001 | 织物液压胶管 Tube vinyl | | 2 | 起升高度 Lifting height 4000mm |
| 01 | 15WAB72LA00001 | 织物液压胶管 Tube vinyl | | 2 | 起升高度 Lifting height 4500mm |
| 01 | 15WAB72NA00001 | 织物液压胶管 Tube vinyl | | 2 | 起升高度 Lifting height 5000mm |

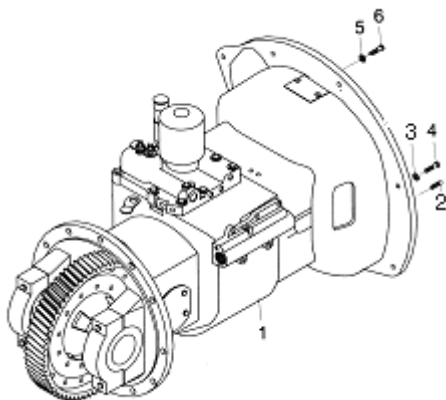
FORKLIFT PARTS CATALOGUE

| 序号 Item No. | 零件图号 Part No. | 零部件名称 Part Description | 规格尺寸 Description | 数量 Q'ty | 备注 Remark |
|----------------|------------------|---------------------------|---------------------|------------|--------------|
| 02 | JB/ZQ3777 | 喉箍 Clip | 16-25 | 6 | |
| 03 | 15WAB72FA10000 | 管夹 Cincture | | 4 | |
| 04 | 30X7060000 | 三通接头 Three way | | 1 | |
| 05 | ZD300×8 | 尼龙扎带 Nylon cincture | | 4 | |
| 06 | 15WAB72FA00002 | 织物液压胶管 Tube vinyl | | 1 | |
| 07 | JB1887 | 胶管接头 Hose | 13 II-640 | 1 | |
| 08 | XSF-F16L-1T-G | 限速阀 Flow regulator | | 1 | |
| 09 | GB3452.1 | O 形密封圈 O-Ring | 18×265 | 1 | |
| 10 | JB1887 | 胶管接头 Hose | 10 II-280 | 1 | |

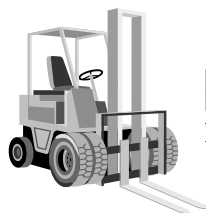


传动系统(液力式)

Drive System (Tor-con Type)

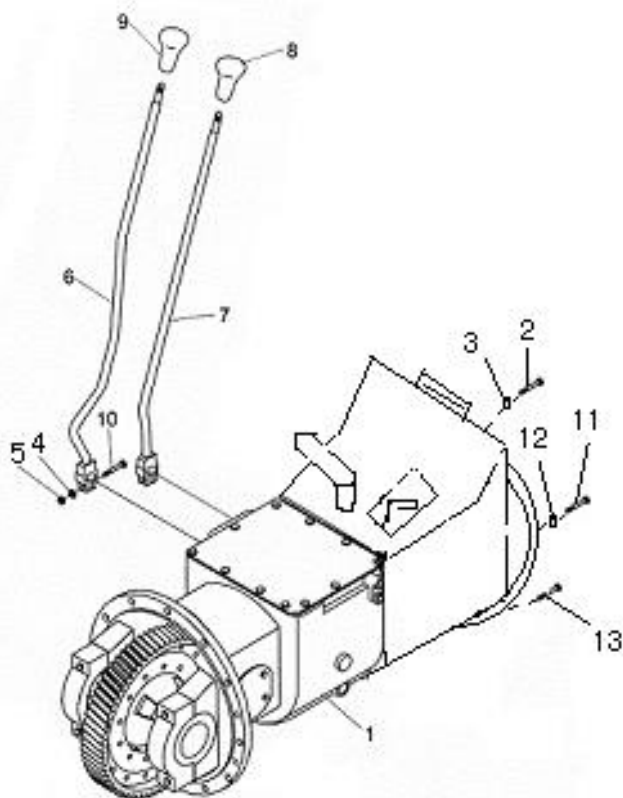


| 序号 Item No. | 零件图号 Part No. | 零部件名称 Part Description | 规格尺寸 Description | 数量 Q'ty | 备注 Remark |
|----------------|------------------|---------------------------|---------------------|------------|--------------|
| 01 | YQXD18E | 变速箱 Drive unit | | 1 | ⑤ |
| 01 | YQXD18C | 变速箱 Drive unit | | 1 | ⑥ |
| 01 | YQX18HA | 变速箱 Drive unit | | 1 | ④ |
| 02 | GB119.2 | 销 Pin | 6×16 | 3 | ④⑤⑥ |
| 03 | GB93 | 垫圈 Washer | 10 | 9 | ④⑤⑥ |
| 04 | GB5783 | 螺栓 Bolt | M10×35 | 9 | ④⑤⑥ |
| 05 | GB93 | 垫圈 Washer | 8 | 6 | ④⑤⑥ |
| 06 | GB5783 | 螺栓 Bolt | M8×20 | 6 | ④⑤⑥ |
| | | | | | |



传动系统(机械式)

Drive System (Clutch Type)



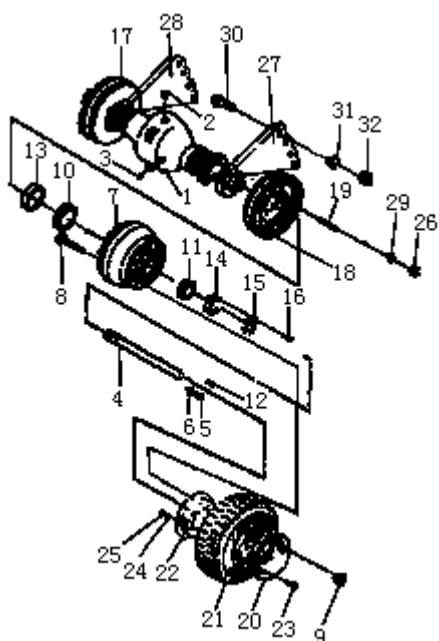
| 序号 Item No. | 零件图号 Part No. | 零部件名称 Part Description | 规格尺寸 Description | 数量 Q'ty | 备注 Remark |
|----------------|------------------|----------------------------------|---------------------|------------|--------------|
| 01 | JDS18E | 变速箱 Drive unit | | 1 | ① |
| 01 | JDS18 II | 变速箱 Drive unit | | 1 | ②③ |
| 02 | GB5783 | 螺栓 Bolt | M8×20 | 6 | ②③ |
| 03 | GB93 | 垫圈 Washer | 8 | 6 | ②③ |
| 04 | GB859 | 垫圈 Washer | 8 | 2 | ①②③ |
| 05 | GB6170 | 螺母 Nut | M8 | 2 | ①②③ |
| 06 | 30W6510000 | 速度变换手柄 Lever,speed change | | 1 | ①②③ |
| 07 | 30W6520000 | 方向变换手柄 Lever,direction change | | 1 | ①②③ |

大连叉车有限责任公司
DALIAN FORKLIFT CO., LTD.

| 序号 Item No. | 零件图号 Part No. | 零部件名称 Part Description | 规格尺寸 Description | 数量 Q'ty | 备注 Remark |
|----------------|------------------|---------------------------|---------------------|------------|--------------|
| 08 | 30CJA13-00100 | 方向手球 Knob, direction | | 1 | ①②③ |
| 09 | 30CJA13-00200 | 速度手球 Knob, speed | | 1 | ①②③ |
| 10 | GB5782 | 螺栓 Bolt | M8×35 | 2 | ①②③ |
| 11 | GB5783 | 螺栓 Bolt | M10×40 | 7 | ① |
| 11 | GB5783 | 螺栓 Bolt | M10×40 | 9 | ②③ |
| 12 | GB93 | 垫圈 Washer | 10 | 7 | ① |
| | GB97.1 | 垫圈 Washer | 10 | | |
| 12 | GB93 | 垫圈 Washer | 10 | 9 | ②③ |
| 13 | GB119.2 | 销 Pin | 6×16 | 3 | ②③ |
| | | | | | |
| | | | | | |
| | | | | | |
| | | | | | |
| | | | | | |
| | | | | | |
| | | | | | |
| | | | | | |
| | | | | | |
| | | | | | |
| | | | | | |
| | | | | | |
| | | | | | |
| | | | | | |
| | | | | | |

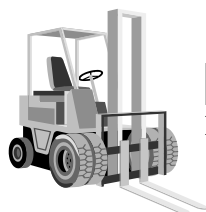


驱动桥
Drive Axle

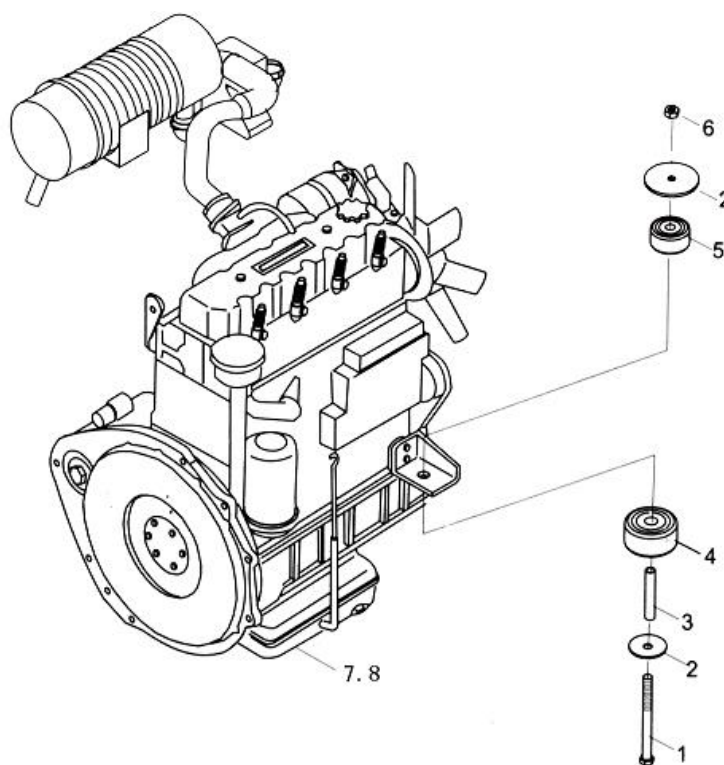


| 序号 Item No. | 零件图号 Part No. | 零部件名称 Part Description | 规格尺寸 Description | 数量 Q'ty | 备注 Remark |
|----------------|------------------|---------------------------|---------------------|------------|--------------|
| 01 | 15W2110000 | 驱动桥壳体总成 Housing Axle | | 1 | |
| 02 | JB/ZQ4446 | 螺塞 Plug, hole | R1/2 | 1 | |
| 03 | 100X2160000 | 通气装置 Vent-set | | 1 | |
| 04 | 15RA2100001A | 半轴 Shaft, drive | | 2 | |
| 05 | GB5782 | 螺栓 Bolt | M10×40 | 16 | |
| 06 | GB93 | 垫圈 Washer | 10 | 26 | |
| 07 | 15W2100002 | 轮毂 Hub | | 2 | |
| 08 | 15RA2100005 | 轮毂螺栓 Bolt | | 12 | |
| 09 | 15RA2100006 | 螺母 Nut | | 12 | |
| 10 | GB/T297 | 滚动轴承 Bearing, taper | 32012 | 2 | |
| 11 | GB/T297 | 滚动轴承 Bearing, taper | 32011 | 2 | |
| 12 | GB119.1 | 销 Pin | 8×26 | 2 | |

| 序号 Item No. | 零件图号 Part No. | 零部件名称 Part Description | 规格尺寸 Description | 数量 Q'ty | 备注 Remark |
|----------------|------------------|-----------------------------|---------------------|------------|--------------|
| 13 | GB9877.1 | 密封垫圈 Seal, oil | FB75×100×10 | 2 | |
| 14 | 43231-T8000 | 锁紧螺母 Nut | | 2 | |
| 15 | 43234-T8000 | 锁片 Lock shim | | 2 | |
| 16 | GB818 | 螺钉 Screw | M6×10 | 4 | |
| 17 | 21233-70201 | 制动器总成（右） Wheel Brake R.H | | 1 | |
| 18 | 21233-70301 | 制动器总成（左） Wheel Brake L.H | | 1 | |
| 19 | 15RA2100011 | 双头螺栓 Bolt | | 12 | |
| 20 | 15W2120001 | 前轮辋 Rim, outside | | 2 | |
| 21 | GB2982 | 轮胎 Tire | 6.50-10-10pr | 2 | |
| 22 | 15W2120002 | 后轮辋 Rim, inside | | 2 | |
| 23 | GB5786 | 螺栓 Bolt | M12×1.5×30 | 6 | |
| 24 | GB93 | 垫圈 Washer | 12 | 6 | |
| 25 | GB6171 | 螺母 Nut | M12×1.5 | 6 | |
| 26 | GB93 | 垫圈 Washer | 14 | 12 | |
| 27 | 15RA2100002 | 左连接板 Board, left | | 1 | |
| 28 | 15RA2100003 | 右连接板 Board, right | | 1 | |
| 29 | GB93 | 垫圈 Washer | 14 | 12 | |
| 30 | 15RA2100010 | 螺栓 Bolt | | 8 | |
| 31 | GB93 | 垫圈 Washer | 18 | 8 | |
| 32 | GB6171 | 螺母 Nut | M18×1.5 | 8 | |

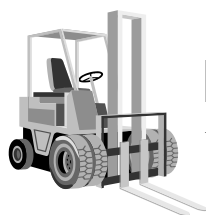


发动机
Engine



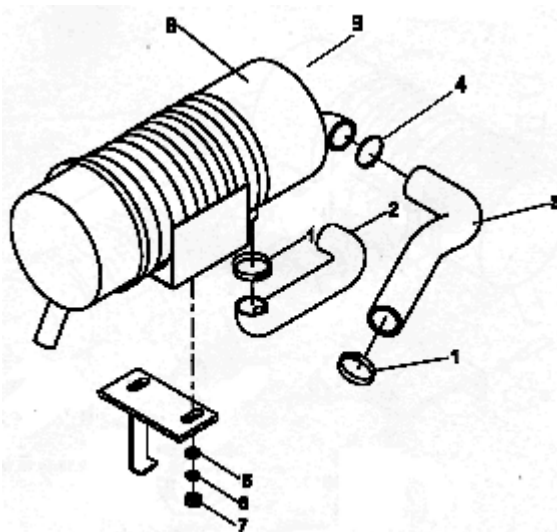
| 序号 Item No. | 零件图号 Part No. | 零部件名称 Part Description | 规格尺寸 Description | 数量 Q'ty | 备注 Remark |
|----------------|------------------|---------------------------|---------------------|------------|--------------|
| 01 | GB5785 | 螺栓 Bolt | M12×1.5×80 | 2 | ① |
| 01 | GB5785 | 螺栓 Bolt | M10×1.25×90 | 2 | ⑥ |
| 01 | GB5785 | 螺栓 Bolt | M12×1.5×90 | 2 | ②③④ |
| 02 | 15WAB9100001 | 垫 Plate | | 4 | ① |
| 02 | 30X9100003 | 垫 Plate | | 4 | ⑥ |
| 02 | 30WBA9100001 | 垫 Plate | | 4 | ②③④ |
| 03 | 15WAB9100004 | 限位钢管 Steel Tube | | 2 | ① |
| 03 | 30V9100006 | 限位钢管 Steel Tube | | 2 | ⑥ |
| 03 | 30WBA9100004 | 限位钢管 Steel Tube | | 2 | ②③④ |
| 04 | 15WAB9100003 | 中垫 Rubber | | 2 | ① |

| 序号 Item No. | 零件图号 Part No. | 零部件名称 Part Description | 规格尺寸 Description | 数量 Q'ty | 备注 Remark |
|----------------|--------------------|---------------------------|---------------------|------------|--------------|
| 04 | 30X9100005 | 中垫 Rubber | | 2 | ⑥ |
| 04 | 30WBA9100003 | 中垫 Rubber | | 2 | ②③④ |
| 05 | 15WAB9100002 | 上垫 Rubber | | 2 | ① |
| 05 | 30X9100004 | 上垫 Rubber | | 2 | ⑥ |
| 05 | 30WBA9100002 | 上垫 Rubber | | 2 | ②③④ |
| 05 | 214A1-02111 | 发动机支承总成 Rubber | | 2 | ⑤ |
| 06 | GB889 | 尼龙锁紧螺母 Nut | M12×1.5 | 2 | ①②③④ |
| 06 | GB889 | 尼龙锁紧螺母 Nut | M10×1.25 | 2 | ⑥ |
| 07 | YD480G-S616 | 发动机 Engine | | 1 | ① |
| 07 | NB485BPG-50 | 发动机 Engine | | 1 | ②④ |
| 07 | NC485BPG-1 | 发动机 Engine | | 1 | ③ |
| 07 | C240PKJ | 发动机 Engine | | 1 | ⑤ |
| 07 | H20 | 发动机 Engine | | 1 | ⑥ |
| 08 | DTFSF-R1/4 | 放水阀 Valve | | 1 | ⑤ |
| | | | | | |

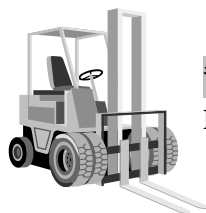


空滤器安装

Air Cleaner Ass'y

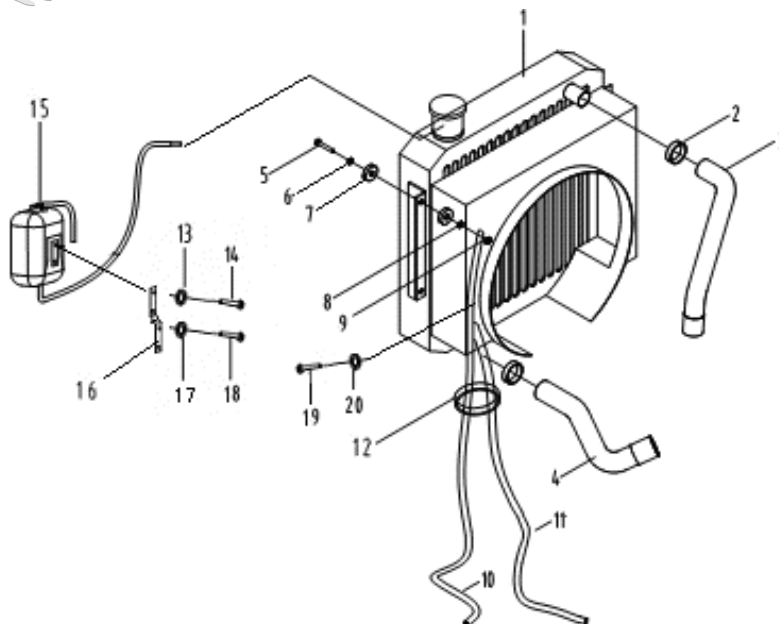


| 序号 Item No. | 零件图号 Part No. | 零部件名称 Part Description | 规格尺寸 Description | 数量 Q'ty | 备注 Remark |
|----------------|------------------|---------------------------|---------------------|------------|--------------|
| 01 | JB/ZQ3777 | 喉箍 Clip | 60-80 | 2 | ⑤⑥ |
| 01 | JB/ZQ3777 | 喉箍 Clip | 60-80 | 3 | ①②③④ |
| 02 | 15WAB3400002 | 空滤器进气管 Hose | | 1 | ① |
| 02 | 15XAB3400002 | 空滤器进气管 Hose | Hose | 1 | ②③④ |
| 02 | 15XFB3400001A | 空滤器进气管 Hose | Hose | 1 | ⑤ |
| 02 | 15VFB3400001 | 空滤器进气管 Hose | Hose | 1 | ⑥ |
| 03 | 15WAB3400001 | 发动机进气管 Duct | | 1 | ① |
| 03 | 15XAB3400001 | 发动机进气管 Duct | | 1 | ②③④ |
| 03 | 15XFB3400002 | 发动机进气管 Duct | | 1 | ⑤ |
| 03 | 15VFB3400002 | 发动机进气管 Duct | | 1 | ⑥ |
| 04 | JB/ZQ3777 | 喉箍 Clip | 55-70 | 2 | ⑤⑥ |
| 04 | JB/ZQ3777 | 喉箍 Clip | 55-70 | 1 | ①②③④ |
| 05 | GB97.1 | 垫圈 Washer | 8 | 2 | ①⑤⑥ |
| 06 | GB93 | 垫圈 Washer | 8 | 2 | |
| 07 | GB6170 | 螺母 Nut | M8 | 2 | |
| 08 | KW1122A | 空滤器总成 Air Cleaner | | 1 | |
| 09 | KW1122A-010000 | 空滤器滤芯 Mandril | | 1 | |



散热装置

Radiator System



| 序号 Item No. | 零件图号 Part No. | 零部件名称 Part Description | 规格尺寸 Description | 数量 Q'ty | 备注 Remark |
|----------------|------------------|---------------------------|---------------------|------------|--------------|
| 01 | 15WAB3310000 | 散热器总成 Radiator | | 1 | ① |
| 01 | 15WBB3310000 | 散热器总成 Radiator | | 1 | ②③ |
| 01 | 15VFB3310000 | 散热器总成 Radiator | | 1 | ④⑥ |
| 01 | 15XFB3310000 | 散热器总成 Radiator | | 1 | ⑤ |
| 02 | JB/ZQ3777 | 喉箍 Clip, Hose | 35~50 | 4 | ①⑤ |
| 02 | JB/ZQ3777 | 喉箍 Clip, Hose | 38~57 | 4 | ②③④⑥ |
| 03 | 15W3300001 | 上水管 Hose, Upper | | 1 | ① |
| 03 | 30V3300002 | 上水管 Hose, Upper | | 1 | ⑥ |
| 03 | 30WBA3300001 | 上水管 Hose, Upper | | 1 | ②③④ |
| 03 | 30X3300001 | 进水管 Hose, Upper | | 1 | ⑤ |
| 04 | 15W3300002 | 下水管 Hose, Lower | | 1 | ① |
| 04 | 30V3300001 | 下水管 Hose, Lower | | 1 | ②③④⑥ |
| 04 | 15XFB3300002 | 出水管 Hose, Lower | | 1 | ⑤ |

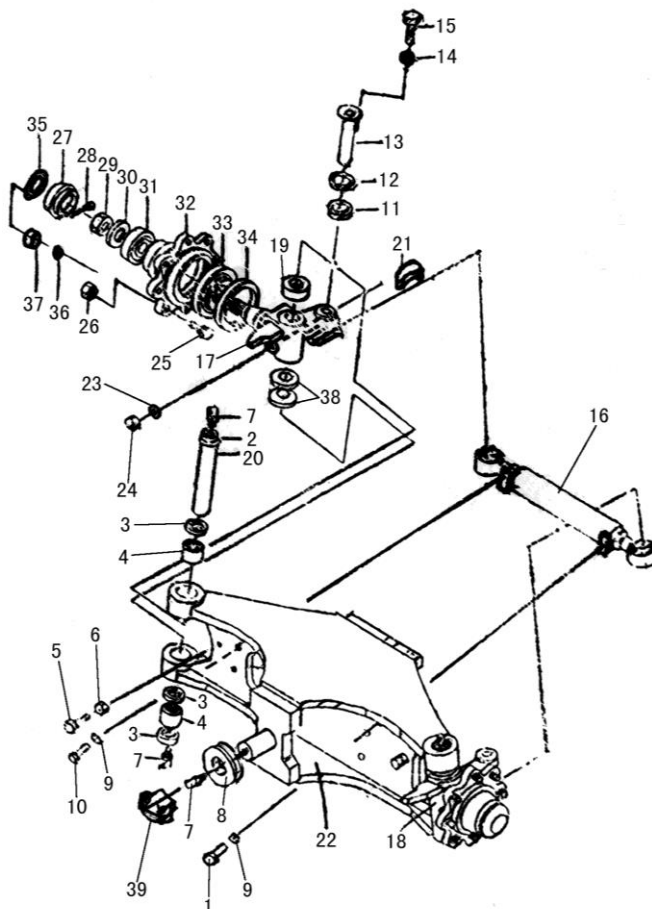
FORKLIFT PARTS CATALOGUE

| 序号 Item No. | 零件图号 Part No. | 零部件名称 Part Description | 规格尺寸 Description | 数量 Q'ty | 备注 Remark |
|----------------|---------------------|---------------------------|---------------------|------------|--------------|
| 05 | GB5783 | 螺栓 Bolt | M8×35 | 4 | |
| 06 | GB93 | 垫圈 Washer | 8 | 4 | ②③④⑥ |
| 07 | 30112-0002 | 橡胶垫 Cushion, Rubber | | 8 | ① |
| 07 | 30X3300003 | 橡胶垫 Cushion, Rubber | | 8 | ②③④⑤⑥ |
| 08 | GB97.1 | 垫圈 Washer | 8 | 8 | |
| 09 | GB6170 | 螺母 Nut | M8 | 4 | |
| 10 | 10 I-Q/Q-1830/1870 | 进油管 Hose | | 1 | ⑤ |
| 10 | D10 I-Q/Q-1220/1250 | 油管 Hose | | 1 | ④⑥ |
| 11 | D10 I-Q/Q-1330/1360 | 油管 Hose | | 1 | ④⑥ |
| 11 | 30XDA3300004 | 胶管接头Hose | 8 I-2100 | 1 | ⑤ |
| 12 | ZD300×8 | 尼龙扎带Band | | 1 | ⑤ |
| 12 | ZD140×3.5 | 尼龙扎带Band | | 5 | ④⑤⑥ |
| 13 | GB93 | 垫圈 Washer | 6 | 2 | |
| 14 | GB5781 | 螺栓 Bolt | M6×12 | 2 | |
| 15 | H24C2-10201 | 副水箱 Water Tank | | 1 | |
| 16 | 15XAB33D00001 | 副水箱支架 Bracket | | 1 | ①④⑤⑥ |
| 17 | GB93 | 垫圈 Washer | 6 | 2 | ①⑤⑥ |
| 17 | GB93 | 垫圈 Washer | 8 | 2 | ④ |
| 18 | GB5781 | 螺栓 Bolt | M6×25 | 2 | ①⑤⑥ |
| 18 | GB5781 | 螺栓 Bolt | M8×16 | 2 | ④ |
| 19 | JB982 | 垫圈 Washer | 14 | 8 | ④⑤⑥ |
| 20 | 30X3300004 | 铰接螺栓 Bolt | | 4 | ④⑤⑥ |



转向桥

Steering Axle



| 序号 Item No. | 零件图号 Part No. | 零部件名称 Part Description | 规格尺寸 Description | 数量 Q'ty | 备注 Remark |
|----------------|------------------|---------------------------|---------------------|------------|--------------|
| 01 | 15W4100005 | 螺栓 Bolt | | 4 | |
| 02 | DF3304-10000 | 油杯 Seal | 1/8 45° | 6 | |
| 03 | GB3452.1 | O形密封圈 O-Ring | 25×3.55 | 2 | |
| 04 | GB290-89 | 滚动轴承 Bearing | 253220 | 4 | |
| 05 | GB5786 | 螺栓 Bolt | M12×1.5×36 | 2 | |
| 06 | GB6173 | 螺母 Nut | M12×1.5 | 2 | |
| 07 | 15RA4100007 | 防尘盖 Dust-lid | | 4 | |
| 08 | 30X4100013 | 垫 Shim | | 2 | |
| 09 | GB93 | 垫圈 Washer | 14 | 4 | |
| 10 | GB5783 | 螺栓 Bolt | M14×40 | 4 | |

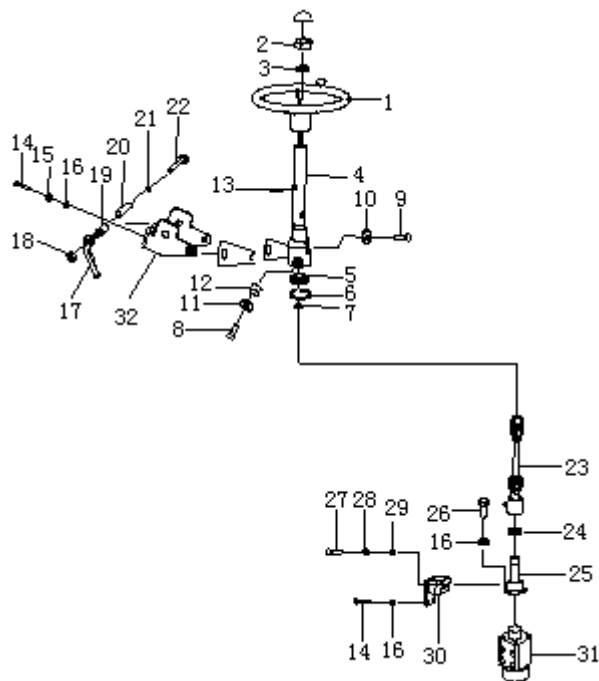
FORKLIFT PARTS CATALOGUE

| 序号 Item No. | 零件图号 Part No. | 零部件名称 Part Description | 规格尺寸 Description | 数量 Q'ty | 备注 Remark |
|----------------|------------------|---------------------------|---------------------|---------------|--------------|
| 11 | 15W4140004 | 衬套 Bushing | | 2 | |
| 12 | 30X4100002 | 锁板 Lock | | 2 | |
| 13 | 15W4100001 | 连板销轴 Pin | | 2 | |
| 14 | GB93 | 垫圈 Washer | 8 | 4 | |
| 15 | GB5781 | 螺栓 Bolt | M8×16 | 4 | |
| 16 | 15W4130000 | 转向油缸 Steering Cylinder | | 1 | |
| 17 | 15W4150000 | 转向节(右) Knuckle, R. H | | 1 | |
| 18 | 15W4140000 | 转向节(左) Knuckle, L. H | | 1 | |
| 19 | 198905 | 单向推力球轴承 Bearing, thrust | | 2 | |
| 20 | 15W4100004 | 轴 Pin | | 2 | |
| 21 | 15W4110000 | 连板总成 Plate | | 2 | |
| 22 | 15W4120000 | 转向桥体 Steering Axle | | 2 | |
| 23 | 15RA4100015 | 定位螺杆 Bolt | | 2 | |
| 24 | GB6170 | 螺母 Nut | M10×1.25 | 2 | |
| 25 | 15RA4100004 | 轮毂螺栓 Bolt, hub | | 12 | |
| 26 | 15RA4100002 | 螺母 Nut | | 12 | |
| 27 | 15RA4100001 | 轮毂端盖 Cap, dust | | 2 | |
| 28 | GB818 | 螺钉 Screw | M6×10 | 4 | |
| 29 | 15RA4100014 | 锁片 Lock | | 2 | |
| 30 | 15RA4100013 | 锁紧螺母 Locking Nut | | 2 | |
| 31 | GB297 | 滚动轴承 Bearing | 30305 | 2 | |
| 32 | 15RA4100003 | 轮毂 Hub | | 2 | |
| 33 | GB297 | 滚动轴承 Bearing | 30208 | 2 | |
| 34 | GB9877.1-88 | 密封圈 Seal Oil | B60×90×8 | 2 | |
| 35 | GB93 | 垫圈 Washer | 5 | 8 | |
| 36 | GB67 | 螺钉 Screw | M5×10 | 8 | |
| 37 | 15RA4100011 | 调整垫片 Washer | | 一组 One Set | |
| 38 | 30X4170000 | 支承座总成 Bracket | | 2 | |



转向装置

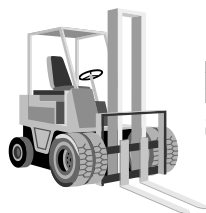
Steering System



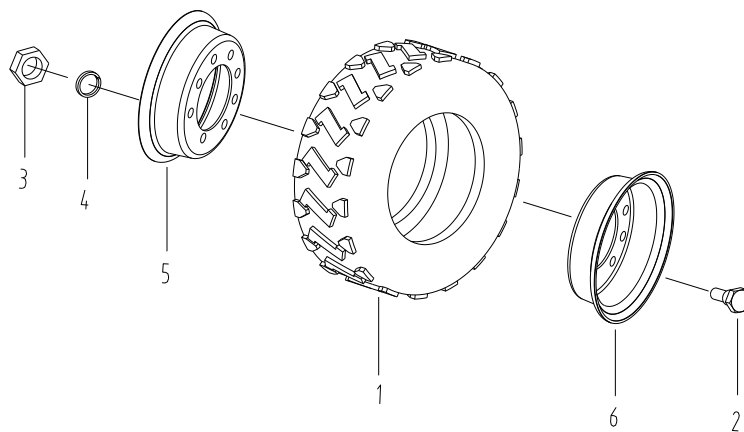
| 序号 Item No. | 零件图号 Part No. | 零部件名称 Part Description | 规格尺寸 Description | 数量 Q'ty | 备注 Remark |
|----------------|------------------|---------------------------|---------------------|------------|--------------|
| 01 | DC3CYC35-10000 | 方向盘总成 Handle Wheel | | 1 | |
| 02 | GB6173 | 螺母 Nut | M14×1.5 | 1 | |
| 03 | GB93 | 垫圈 Washer | 14 | 1 | |
| 04 | DL3404010A | 转向管总成 Column | | 1 | |
| 05 | GB/T276 | 深沟球轴承 Bearing | 6203-2Z | 1 | |
| 06 | GB893.1 | 挡圈 Ring, Snap | 40 | 1 | |
| 07 | GB894.1 | 挡圈 Ring, Snap | 17 | 1 | |
| 08 | 30V42B00001 | 支承栓 Bolt | | 2 | |
| 09 | GB5781 | 螺栓 Bolt | M8×25 | 1 | |
| 10 | GB93 | 垫圈 Washer | 8 | 1 | |

FORKLIFT PARTS CATALOGUE

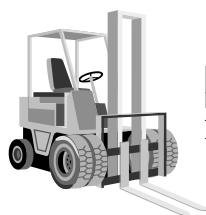
| 序号 Item No. | 零件图号 Part No. | 零部件名称 Part Description | 规格尺寸 Description | 数量 Q'ty | 备注 Remark |
|----------------|------------------|-----------------------------------|---------------------|------------|--------------|
| 11 | GB93 | 垫圈 Washer | 16 | 2 | |
| 12 | 30X4200007 | 衬套 Bushing | | 2 | |
| 13 | 30X4200002 | 喇叭线夹 Wire Clamp | | 1 | |
| 14 | GB5783 | 螺栓 Bolt | M10×25 | 8 | |
| 15 | GB97.1 | 垫圈 Washer | 10 | 4 | |
| 16 | GB93 | 垫圈 Washer | 10 | 8 | |
| 17 | 30V42B30000 | 锁紧手柄总成 Handle System | | 1 | |
| 18 | GB6170 | 螺母 Nut | M14 | 1 | |
| 19 | 30V42B00002 | 锁紧柱 Lock Cylinder | | 1 | |
| 20 | 30V42B00003 | 钢管拔 Steel Pipe | 22×3.5-91 | 1 | |
| 21 | GB97.1 | 垫圈 Washer | 14 | 1 | |
| 22 | 30V42B00004 | 螺栓 Bolt | | 1 | |
| 23 | DL3404020A | 传动轴 Drive, Steering | | 1 | |
| 24 | 30V42B00008 | 防尘胶圈 Dust Proof Washer | | 1 | |
| 25 | 720-1106 | 转向轴总成 Shaft, Steering | | 1 | |
| 26 | GB5782 | 螺栓 Bolt | M10×45 | 4 | |
| 27 | GB5786 | 螺栓 Bolt | M12×125×25 | 2 | |
| 28 | GB97.1 | 垫圈 Washer | 12 | 2 | |
| 29 | GB93 | 垫圈 Washer | 12 | 2 | |
| 30 | 30V42B40000 | 转向器支架 Hydraulic Bracket | | 1 | |
| 31 | 532-1324 | 全液压转向器 Full Hydraulic Steering | | 1 | |
| 32 | 30V42B50000 | 支架总成 Bracket | | 1 | |



转向车轮
Steering Wheel

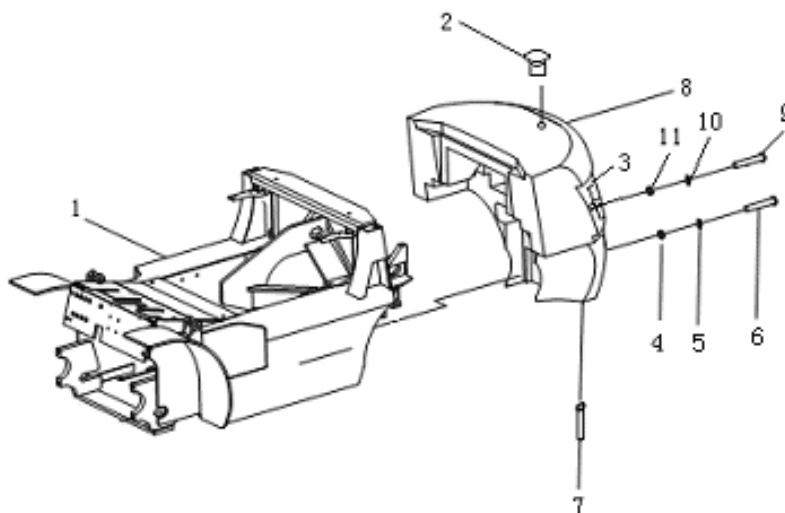


| 序号 Item No. | 零件图号 Part No. | 零部件名称 Part Description | 规格尺寸 Description | 数量 Q`ty | 备注 Remark |
|----------------|------------------|---------------------------|---------------------|------------|--------------|
| 01 | 5.00-8-8pr | 轮胎 Tire | | 1 | |
| 02 | GB5783 | 螺栓 Bolt | M12×1.25×25 | 6 | |
| 03 | GB6170 | 螺母 Nut | M12×1.25 | 6 | |
| 04 | GB93 | 垫圈 Washer | 10 | 6 | |
| 05 | 15RA4500001 | 后轮辋 (外) Rear rim, outside | | 1 | |
| 06 | 15RA4500002 | 后轮辋 (内) Rear rim, inside | | 1 | |



车架与平衡重

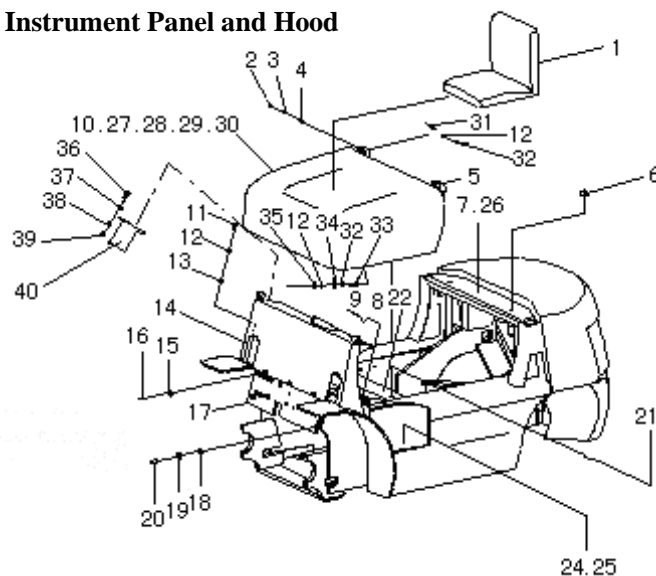
Frame and Counter Weight



| 号 Item No. | 零件图号 Part No. | 零部件名称 Part Description | 规格尺寸 Description | 数量 Q`ty | 备注 Remark |
|---------------|------------------|---------------------------|---------------------|------------|------------------|
| 01 | 15WAB51D00000 | 车架 Frame | | 1 | ① |
| 01 | 15XFB51D00000 | 车架 Frame | | 1 | ⑤ |
| 01 | 15VFB51D00000 | 车架 Frame | | 1 | ⑥ |
| 01 | 15XAB51D00000 | 车架 Frame | | 1 | ②③④ |
| 02 | 20XDB5900004 | 封盖 Close over | | 2 | |
| 03 | 15WAB5900002 | 栅板 Board, Grid | | 1 | |
| 04 | 30V0000001 | 垫圈 Washer | | 1 | |
| 05 | GB93 | 垫圈 Washer | 30 | 1 | |
| 06 | GB5782 | 螺栓 Bolt | M30×150 | 1 | |
| 07 | 30X5800000 | 牵引栓 Pin, Draw | | 1 | |
| 08 | 10WAB5900001 | 平衡重 Equalizer | | 1 | CPCD10 CPQD10 |
| 08 | 15WAB5900001 | 平衡重 Equalizer | | 1 | CPCD15 CPQD15 |
| 08 | 18WAB5900001 | 平衡重 Equalizer | | 1 | CPCD18 CPQD18 |
| 09 | GB5783 | 螺栓 Bolt | M10×20 | 2 | |
| 10 | GB93 | 垫圈 Washer | 10 | 2 | |
| 11 | GB97.1 | 垫圈 Washer | 10 | 2 | |

仪表架及机罩安装

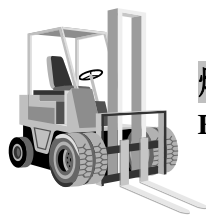
Instrument Panel and Hood



| 序号 Item No. | 零件图号 Part No. | 零部件名称 Part Description | 规格尺寸 Description | 数量 Q'ty | 备注 Remark |
|----------------|------------------|-----------------------------|---------------------|------------|--------------|
| 1 | D91314-03020 | 座椅 Seat | | 1 | |
| 2 | L91212-01600 | 隔套 Bushing | | 4 | |
| 3 | GB91 | 销 Pin | 2×16 | 2 | |
| 4 | L91213-14300 | 销轴 Pin axis | | 2 | |
| 5 | 15XAB53D21000 | 铰链 Hinge | | 2 | |
| 6 | Z64-7 | 五角星形把手 Bolt cap | M8×40×25 | 2 | |
| 7 | 15XAB53D30000 | 水箱盖板总成 Plate, water tank | | 1 | ①②③④⑤ ⑥-1 |
| 7 | 15ZFB53D30000 | 水箱盖板总成 Plate, water tank | | 1 | ⑥-2 |
| 8 | 15WAB5200002 | 踏板 Floor board | | 1 | ①②③④⑤ ⑦⑧ |
| 8 | 15VFB5220000 | 踏板总成 Floor board | | 1 | ⑥ |
| 9 | 15WBB5300001 | 橡胶底板 Rubber mat | | 1 | ①②③ |
| 9 | 15XAB53D00001 | 橡胶底板 Rubber mat | | 1 | ④⑤⑥⑦⑧ |
| 10 | 15XAB53D20000 | 机罩总成 Hood | | 1 | |
| 11 | GB5783 | 螺栓 Bolt | M10×30 | 4 | |
| 12 | GB93 | 垫圈 Washer | 10 | 9 | |

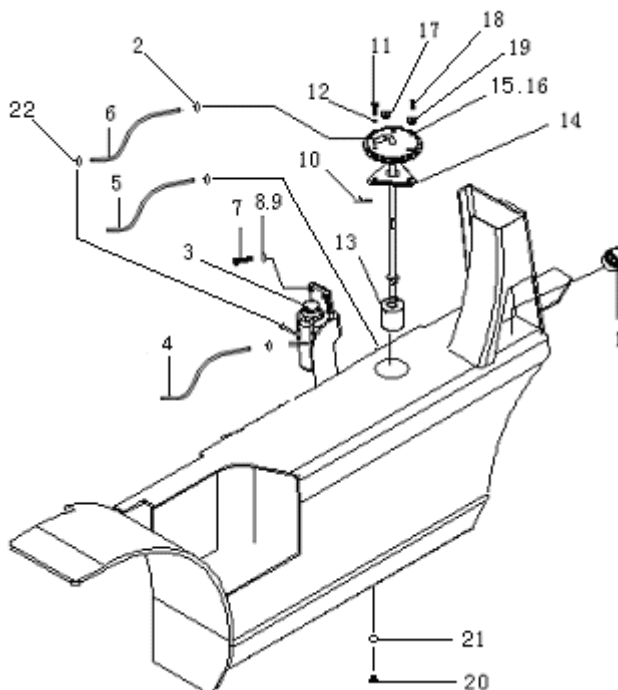
FORKLIFT PARTS CATALOGUE

| 序号 Item No. | 零件图号 Part No. | 零部件名称 Part Description | 规格尺寸 Description | 数量 Q`ty | 备注 Remark |
|----------------|------------------|---------------------------|---------------------|------------|--------------|
| 13 | GB96.1 | 垫圈 Washer | 10 | 4 | |
| 14 | 15WAB5210000 | 仪表架体 Panel | | 1 | |
| 15 | GB93 | 垫圈 Washer | 8 | 3 | |
| 16 | GB5783 | 螺栓 Bolt | M8×20 | 3 | |
| 17 | 15WAB5200001 | 前板 Plate, front | | 1 | |
| 18 | GB97.1 | 垫圈 Washer | 12 | 4 | |
| 19 | GB93 | 垫圈 Washer | 12 | 4 | |
| 20 | GB5783 | 螺栓 Bolt | M12×30 | 4 | |
| 21 | 30X5200002 | 螺钉 Screw | | 2 | |
| 22 | 15XAB53D10000 | 后底板总成 Board | | 1 | |
| 24 | 30XDB5100002 | 防滑板(左)Rubber mat | | 1 | |
| 25 | 30XDB5100003 | 防滑板(右) Rubber mat | | 1 | |
| 26 | HG/T3088 | 密封条 Dust bar | L=1050 | 1 | |
| 27 | QD16.350×180×430 | 气弹簧 Shore | | 1 | |
| 28 | GB882 | 销轴 Pin axis | 8×70 | 2 | |
| 29 | GB91 | 销 Pin | 2×16 | 2 | |
| 30 | GB97.1 | 垫圈 Washer | 8 | 2 | |
| 31 | GB5786 | 螺栓 Bolt | M10×1.25×16 | 4 | |
| 32 | GB97.1 | 垫圈 Washer | 10 | 5 | |
| 33 | GB5786 | 螺栓 Bolt | M10×1.25×45 | 1 | |
| 34 | L91213-13700 | 挂扣 Buckle | | 1 | |
| 35 | GB6171 | 螺母 Nut | M10×1.25 | 1 | |
| 36 | GB67 | 螺钉 Bolt | M5×20 | 2 | |
| 37 | GB97.1 | 垫圈 Washer | 5 | 2 | |
| 38 | GB93 | 垫圈 Washer | 5 | 2 | |
| 39 | GB6170 | 螺母 Nut | M5 | 2 | |
| 40 | H24C6-42072 | 工具箱 Box | | 1 | |



燃油箱安装

Fuel System



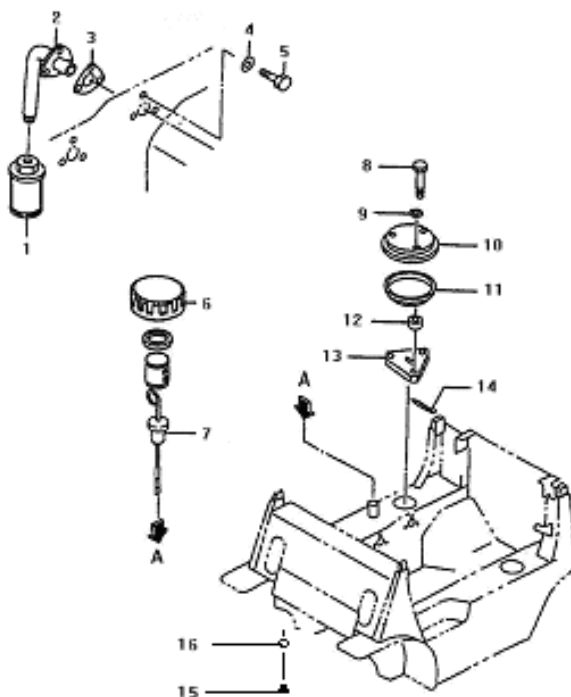
| 序号 Item No. | 零件图号 Part No. | 零部件名称 Part Description | 规格尺寸 Description | 数量 Q'ty | 备注 Remark |
|----------------|------------------|---------------------------|---------------------|------------|--------------|
| 01 | 30X5410000 | 油盖 Cover, tank | | 1 | |
| 02 | JB/ZQ3777 | 喉箍 Clip | 11-16 | 6 | ①②③④⑤ |
| 02 | JB/ZQ3777 | 喉箍 Clip | 11-16 | 4 | ⑥ |
| 03 | 8-94154754-4 | 油水分离器 Fuel Filter | | 1 | ①②③④ |
| 03 | 282A16 | 汽油滤清器 Fuel Filter | | 1 | ⑥ |
| 04 | HG/T3041 | 输油胶管 Hose | 8×15×1200 | 1 | ⑤ |
| 04 | HG/T3041 | 输油胶管 Hose | 8×15×400 | 1 | ①②③④⑥ |
| 05 | HG/T3041 | 输油胶管 Hose | 8×15×240 | 1 | ①②③④⑤ |
| 06 | HG/T3041 | 输油胶管 Hose | 8×15×420 | 1 | ①②③④⑤ |
| 06 | HG/T3041 | 输油胶管 Hose | 8×15×400 | 1 | ⑥ |
| 07 | GB5781 | 螺栓 Bolt | M8×30 | 2 | ①②③④⑤hhh |

FORKLIFT PARTS CATALOGUE

| 序号 Item No. | 零件图号 Part No. | 零部件名称 Part Description | 规格尺寸 Description | 数量 Q`ty | 备注 Remark |
|----------------|------------------|---------------------------|---------------------|------------|--------------|
| 07 | GB5783 | 螺栓 Bolt | M8×20 | 2 | ⑥ |
| 08 | GB93 | 垫圈 Washer | 8 | 2 | |
| 09 | GB97.1 | 垫圈 Washer 8 | 8 | 2 | ①②③④⑤ |
| 10 | GB91 | 销 Pin | 2×16 | 3 | |
| 11 | L91276-00500 | 螺栓 Bolt | | 3 | |
| 12 | JB982 | 垫圈 Washer | 8 | 3 | |
| 13 | Y0606-0000 | 滤清器 Filter | | 1 | |
| 14 | 20XDB5412000 | 压板 Board | | 1 | |
| 15 | 15VFB54D11000 | 顶盖总成 Cap | | 1 | |
| 16 | L93175-12600 | 垫片 Packing | | 1 | |
| 17 | L91364-01300 | 隔套 Spacer | | 3 | |
| 18 | 20XDB5400001 | 轴 Shaft | | 1 | |
| 19 | 20XDB5400002 | 轴套 Spacer | | 1 | |
| 20 | 30X5400004 | 放油螺塞 Plug | | 1 | ①②③④⑤ |
| 21 | JB982-1977 | 垫圈 Washer | 30 | 1 | ①②③④⑤ |
| 22 | 30V5400001 | 接头 Joint | | 2 | ⑥ |



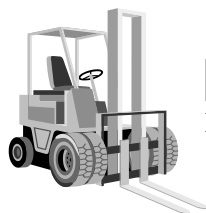
工作油箱安装
Hydraulic Oil Tank



| 序号 Item No. | 零件图号 Part No. | 零部件名称 Part Description | 规格尺寸 Description | 数量 Q`ty | 备注 Remark |
|----------------|------------------|---------------------------|---------------------|------------|--------------|
| 1 | 20XDB5600002 | 过滤器 Strainer | | 1 | |
| 2 | L91375-20300 | 吸油管 Pipe | | 1 | |
| 3 | L91875-00400 | 垫片 Packing | | 2 | |
| 4 | JB982 | 垫圈 Sealing | 10 | 3 | |
| 5 | GB5786 | 螺栓 Bolt | M10×1.25×20 | 3 | |
| 6 | L91275-30010D | 油盖总成 Cap | | 1 | |
| 7 | 20XDB5610000 | 工作油标尺 Gage | | 1 | |

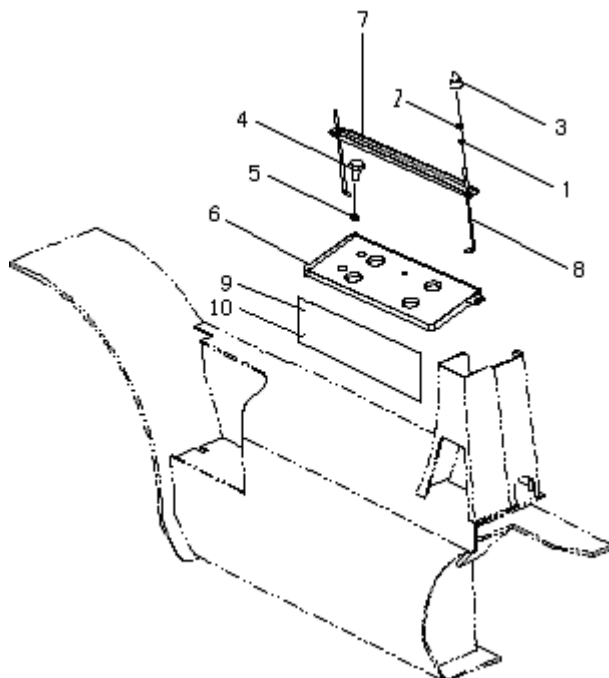
FORKLIFT PARTS CATALOGUE

| 序号 Item No. | 零件图号 Part No. | 零部件名称 Part Description | 规格尺寸 Description | 数量 Q`ty | 备注 Remark |
|----------------|------------------|---------------------------|---------------------|------------|--------------|
| 8 | L91276-00500 | 螺栓 Bolt | | 3 | |
| 9 | JB982 | 垫圈 Sealing | 8 | 3 | |
| 10 | L91375-10100 | 油箱盖 Cover | | 1 | |
| 11 | L91375-12600 | 垫片 Packing | | 1 | |
| 12 | L91364-01300 | 隔套 Spacer | | 3 | |
| 13 | L91376-10202 | 压板 Clamp | | 1 | |
| 14 | GB91 | 销 Pin | 2×15 | 3 | |
| 15 | 30X5400004 | 放油螺塞 Plug | | 1 | |
| 16 | JB982 | 垫圈 Washer | 30 | 1 | |



蓄电池安装

Installation of The Battery



| 序号 Item No. | 零件图号 Part No. | 零部件名称 Part Description | 规格尺寸 Description | 数量 Q`ty | 备注 Remark |
|----------------|------------------|---------------------------|---------------------|------------|--------------|
| 01 | GB96.1 | 垫圈 Washer | 6 | 2 | ①⑤⑥ |
| 01 | GB97.1 | 垫圈 Washer | 8 | 2 | ②③④ |
| 02 | GB93 | 垫圈 Washer | 6 | 2 | ①⑤⑥ |
| 02 | GB93 | 垫圈 Washer | 8 | 4 | ②③④ |
| 03 | GB6170 | 螺母 Nut | M6 | 2 | ①⑤⑥ |
| 03 | GB6170 | 螺母 Nut | M8 | 2 | ②③④ |
| 04 | GB5783 | 螺栓 Bolt | M8×10 | 2 | ①⑤⑥ |
| 04 | GB5783 | 螺栓 Bolt | M10X20 | 4 | ②③④ |
| 05 | GB93 | 垫圈 Washer | 8 | 2 | ①⑤⑥ |
| 05 | GB93 | 垫圈 Washer | 10 | 4 | ②③④ |

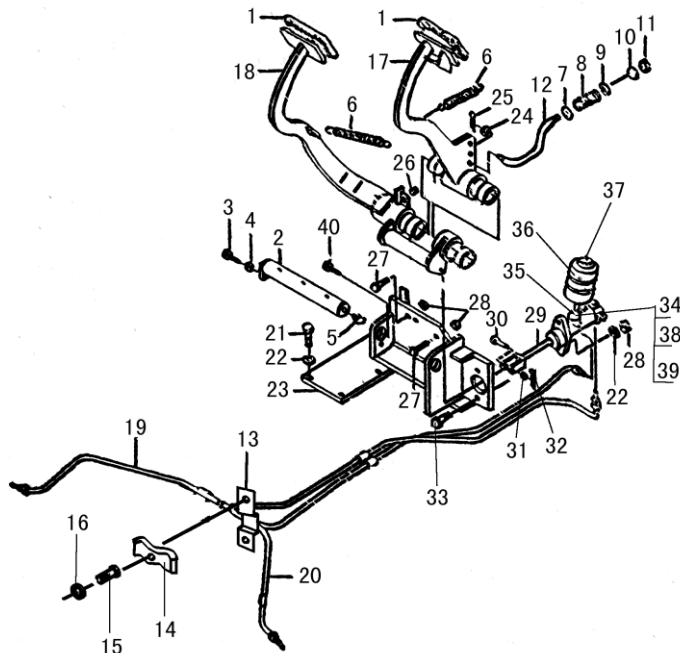
FORKLIFT PARTS CATALOGUE

| 序号 Item No. | 零件图号 Part No. | 零部件名称 Part Description | 规格尺寸 Description | 数量 Q`ty | 备注 Remark |
|----------------|------------------|---------------------------|---------------------|------------|--------------|
| 06 | 15WAB5710000 | 蓄电池座 Seat, Battery | | 1 | ①⑤⑥ |
| 06 | 20XDB5710000 | 电瓶座 Seat, Battery | | 1 | ②③④ |
| 07 | 15W5700001 | 压板 Plate | | 1 | ①⑤⑥ |
| 07 | D91206-05900 | 蓄电池固定夹 Plate | | 1 | ②③④ |
| 08 | 15WAB5700001 | 挂钩 Hook | | 2 | ①⑤⑥ |
| 08 | D91304-01200 | 蓄电池固定杆 Hook | | 2 | ②③④ |
| 09 | L91206-05701 | 蓄电池座 Seat, Battery | | 1 | ②③④ |
| 10 | GB12618 | 抽芯铆钉 Rievt | 3X7 | 3 | ②③④ |



制动离合操纵

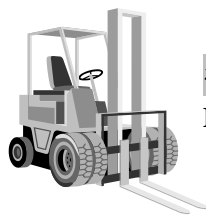
Clutch & Brake Pedal



| 序号 Item No. | 零件图号 Part No. | 零部件名称 Part Description | 规格尺寸 Description | 数量 Q`ty | 备注 Remark |
|----------------|------------------|---------------------------|---------------------|------------|--------------|
| 01 | 30X6100001 | 盖 Cover | | 2 | ①②③ |
| 02 | 15W6110000 | 踏板轴 Shaft, Pedal | | 1 | ①②③ |
| 03 | GB5783 | 螺栓 Bolt | M8×16 | 1 | ①②③ |
| 04 | GB93 | 垫圈 Washer | 8 | 1 | ①②③ |
| 05 | GB1152 | 油杯 Fitting, Grease | M10×1 | 1 | ①②③ |
| 06 | 30X6100003 | 弹簧 Spring | | 2 | ①②③ |
| 07 | 30W6100001 | 垫圈 Washer | | 2 | ①②③ |
| 08 | 30W6100002 | 弹簧 Spring | | 1 | ①②③ |
| 09 | GB97.1 | 垫圈 Washer | 12 | 1 | ①②③ |
| 10 | 30W6100003 | 接头 Joint | | 1 | ①②③ |
| 11 | GB6173 | 螺母 Bolt | M12×1.25 | 1 | ①②③ |
| 12 | 30W6140000 | 拉杆总成 Rod Ass'y | | 1 | ① |
| 12 | 20WCB6120000 | 拉杆总成 Rod Ass'y | | 1 | ②③ |

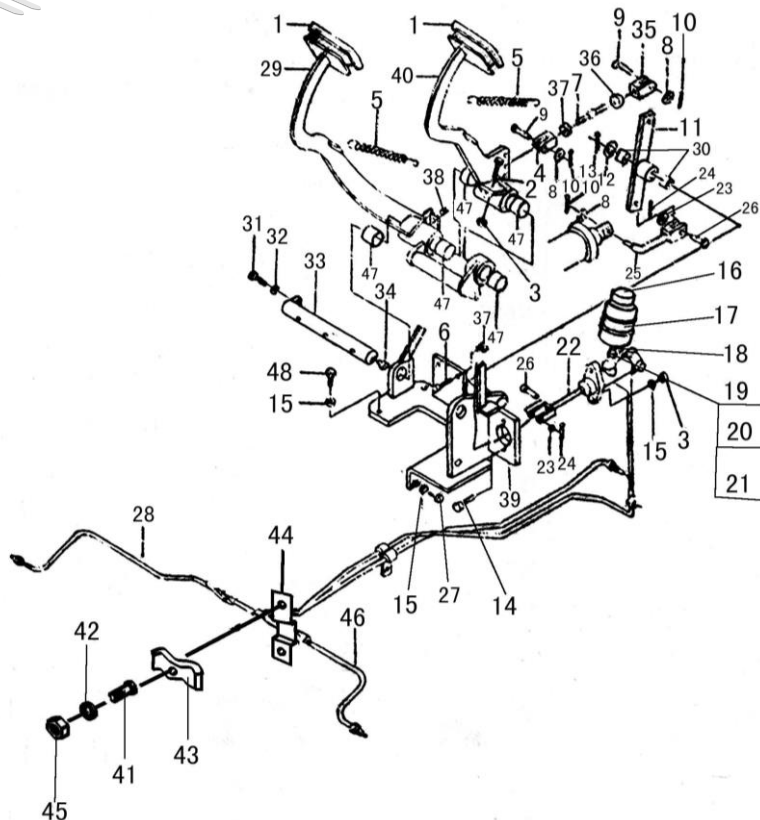
FORKLIFT PARTS CATALOGUE

| 序号 Item No. | 零件图号 Part No. | 零部件名称 Part Description | 规格尺寸 Description | 数量 Q'ty | 备注 Remark |
|----------------|------------------|---------------------------|---------------------|------------|--------------|
| 13 | 15WAB6130000 | 支架 Bracket | | 1 | ①②③ |
| 14 | 30V6100010 | 管夹 Clip | | 1 | ①②③ |
| 15 | GB5781 | 螺栓 Bolt | M6×20 | 1 | ①②③ |
| 16 | GB93 | 垫圈 Washer | 6 | 1 | ①②③ |
| 17 | 15WAB6150000 | 离合踏板 Clutch Pedal | | 1 | ①②③ |
| 18 | 15WAB6160000 | 制动踏板 Brake Pedal | | 1 | ①②③ |
| 19 | 15WAB6110000 | 油管总成(右)Pipe R.H.Brake | | 1 | ①②③ |
| 20 | 15WAB6120000 | 油管总成(左)Pipe L.H.Brake | | 1 | ①②③ |
| 21 | GB5781 | 螺栓 Bolt | M10×25 | 5 | ①②③ |
| 22 | GB93 | 垫圈 Washer | 10 | 7 | ①②③ |
| 23 | 15WAB6140000 | 踏板支座 Bracket, Pedal | | 1 | ①②③ |
| 24 | GB97.1 | 垫圈 Washer | 10 | 1 | ①②③ |
| 25 | GB91 | 销 Pin | 3.2×26 | 1 | ①②③ |
| 26 | 46584 S0100 | 挡块 Stopper | | 1 | ①②③ |
| 27 | GB5786 | 螺栓 Bolt | M10×1.25×30 | 1 | ①②③ |
| 28 | GB6171 | 螺母 Nut | M10×1.25 | 3 | ①②③ |
| 29 | CKM3/4 | 制动总泵 Master Cylinder | | 1 | ①②③ |
| 30 | GB882 | 销轴 Pin, Clevis | B8×26 | 1 | ①②③ |
| 31 | GB97.1 | 垫圈 Washer | 8 | 1 | ①②③ |
| 32 | GB91 | 销 Pin | 3.2×16 | 1 | ①②③ |
| 33 | GB5786 | 螺栓 Bolt | M10×1.25×35 | 2 | ①②③ |
| 34 | 30XDB6100001 | 油杯接头 Joint | | 1 | ①②③ |
| 35 | Q/DCJ.05611-2002 | 管夹 Clip | 38 | 1 | ①②③ |
| 36 | N0030-3500020 | 方油杯 Fitting, Grease | | 1 | ①②③ |
| 37 | N0030-3500017 | 油杯盖 Cup, Cover | | 1 | ①②③ |
| 38 | GB1235 | O 形密封圈 O-Ring | 35×3.1 | 1 | ①②③ |
| 39 | JB982 | 垫圈 Washer | | 1 | ①②③ |
| 40 | GB5786 | 螺栓 Bolt | M10×1.25×55 | 1 | ①②③ |



行车制动与微动操纵

Brake and inching Control



| 序号 Item No. | 零件图号 Part No. | 零部件名称 Part Description | 规格尺寸 Description | 数量 Q`ty | 备注 Remark |
|----------------|------------------|---------------------------|---------------------|------------|--------------|
| 01 | 30X6100001 | 盖 Cover | | 2 | ④⑤⑥ |
| 02 | GB5782 | 螺栓 Bolt | M10×40 | 1 | ④⑤⑥ |
| 03 | GB6170 | 螺母 Nut | M10 | 3 | ④⑤⑥ |
| 04 | 15XFB6100001 | 连接叉 Yoke,R.H | | 1 | ④⑤⑥ |
| 05 | 30X6100003 | 弹簧 Spring | | 2 | ④⑤⑥ |
| 06 | GB5786 | 螺栓 Bolt | M10×1.25×30 | 1 | ④⑤⑥ |
| 07 | 30X6100004 | 调节螺杆 Rod | | 1 | ④⑤⑥ |
| 08 | GB97.1 | 垫圈 Washer | 10 | 2 | ④⑤⑥ |
| 09 | GB882 | 销轴 Pin, Clevis | B10×30 | 2 | ④⑤⑥ |
| 10 | GB91 | 销 Pin | 3.2×20 | 2 | ④⑤⑥ |

FORKLIFT PARTS CATALOGUE

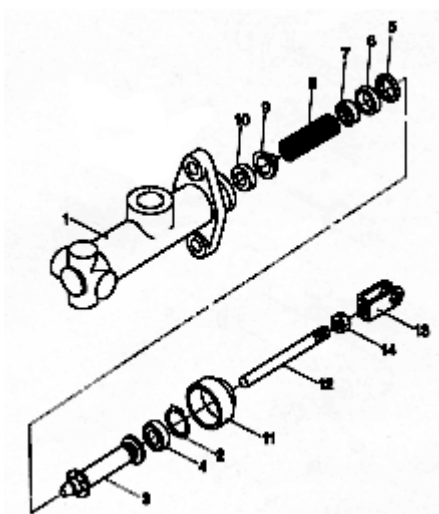
| 序号 Item No. | 零件图号 Part No. | 零部件名称 Part Description | 规格尺寸 Description | 数量 Q'ty | 备注 Remark |
|----------------|------------------|---------------------------|---------------------|------------|--------------|
| 11 | 30X61100000 | 连杆组件 Link | | 1 | ④⑤⑥ |
| 12 | GB97.1 | 垫圈 Washer | 16 | 1 | ④⑤⑥ |
| 13 | GB91 | 销 Pin | 4×30 | 1 | ④⑤⑥ |
| 14 | GB5782 | 螺栓 Bolt | M10×35 | 2 | ④⑤⑥ |
| 15 | GB93 | 垫圈 Washer | 10 | 6 | ④⑤⑥ |
| 16 | N0030-3500017 | 油杯盖 Cup, Cover | | 1 | ④⑤⑥ |
| 17 | N0030-3500020 | 方油杯 Fitting, Grease | | 1 | ④⑤⑥ |
| 18 | Q/DCJ.05611 | 管夹 Clip | 38 | 1 | ④⑤⑥ |
| 19 | 30XDB6100001 | 油杯接头 Joint | | 1 | ④⑤⑥ |
| 20 | GB1235 | O形密封圈 O-Ring | 35×3.1 | 1 | ④⑤⑥ |
| 21 | JB982 | 垫圈 Washer | 18 | 1 | ④⑤⑥ |
| 22 | CKM3/4 | 制动总泵 Master Cylinder | | 1 | ④⑤⑥ |
| 23 | GB97.1 | 垫圈 Washer | 8 | 2 | ④⑤⑥ |
| 24 | GB91 | 销 Pin | 3.2×16 | 2 | ④⑤⑥ |
| 25 | 30X6120000 | 接头体 Joint | | 1 | ④⑤⑥ |
| 26 | GB882 | 销轴 Pin, Clevis | B8×30 | 1 | ④⑤⑥ |
| 27 | GB5783 | 螺栓 Bolt | M10×20 | 4 | ④⑤⑥ |
| 28 | 15WAB6110000 | 油管总成(右) Pipe,R.H | . | 1 | ④⑤⑥ |
| 29 | 15XFB6120000 | 制动踏板 Pedal | | 1 | ④⑤⑥ |
| 30 | 1615 | 衬套 Bushing | | 2 | ④⑤⑥ |
| 31 | GB5783 | 螺栓 Bolt | M8×16 | 1 | ④⑤⑥ |
| 32 | GB93 | 垫圈 Washer | 8 | 1 | ④⑤⑥ |
| 33 | 30X6150000 | 踏板轴 Shaft, Pedal | | 1 | ④⑤⑥ |
| 34 | JB/T7940.2 | 油杯 Fitting, Grease | 45° M10×1 | 1 | ④⑤⑥ |
| 35 | 15XFB6100002 | 左连接叉 Yoke,L.H | | 1 | ④⑤⑥ |
| 36 | 30X6100006 | 左螺母 Nut,L.H | | 1 | ④⑤⑥ |
| 37 | GB6171 | 螺母 Nut | M10×1.25 | 2 | ④⑤⑥ |

| 序号 Item No. | 零件图号 Part No. | 零部件名称 Part Description | 规格尺寸 Description | 数量 Q`ty | 备注 Remark |
|----------------|------------------|---------------------------|---------------------|------------|--------------|
| 38 | 46584 S0100 | 挡块 Stopper | | 1 | ④⑤⑥ |
| 39 | 15XFB6110000 | 托座 Braket,Pedal | | 1 | ④⑤⑥ |
| 40 | 15XFB6130000 | 微动踏板 Pedal, Inching | | 1 | ④⑤⑥ |
| 41 | GB5781 | 螺栓 Bolt | M6×20 | 1 | ④⑤⑥ |
| 42 | GB93 | 垫圈 Washer | 6 | 1 | ④⑤⑥ |
| 43 | 30V6100010 | 管夹 Clip | | 1 | ④⑤⑥ |
| 44 | 15WAB6100001 | 支架 Bracket | | 1 | ④⑤⑥ |
| 45 | GB6170 | 螺母 Nut | M6 | 1 | ④⑤⑥ |
| 46 | 15WAB6120000 | 油管总成(左)Pipe L.H | | 1 | ④⑤⑥ |
| 47 | 30X6140007 | 衬套 Bushing | | 6 | ④⑤⑥ |
| 48 | GB5786 | 螺栓 Bolt | M10×1.25×25 | 2 | ④⑤⑥ |



制动总泵

Master Cylinder

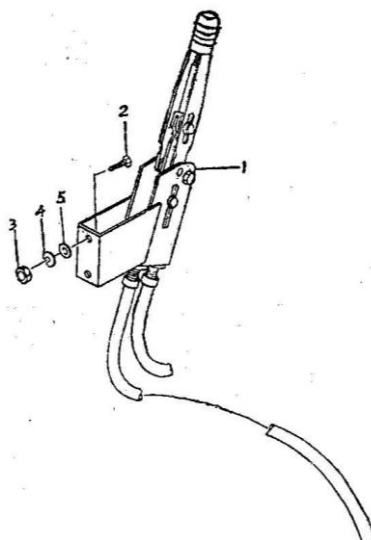


| 序号 Item No. | 零件图号 Part No. | 零部件名称 Part Description | 规格尺寸 Description | 数量 Q'ty | 备注 Remark |
|----------------|------------------|---------------------------|---------------------|------------|--------------|
| 01 | CKM3/4 | 缸体 Body, Cylinder | | 1 | |
| 02 | Q43022 | 孔用弹性挡圈 Ring, Stopper | | 1 | |
| 03 | CKM3/4-3505030 | 活塞弹簧总成 Piston | | 1 | |
| 04 | | 前皮碗 Cup, Secondary | | 1 | |
| 05 | | 衬套皮碗 Cup, Rubber | | 1 | |
| 06 | | 主皮碗 Cup, Primary | | 1 | |
| 07 | | 弹簧座 Seat, Spring | | 1 | |
| 08 | | 弹簧 Spring | | 1 | |
| 09 | CKM3/4-3505040 | 输液阀总成 Valve, Check | | 1 | |
| 10 | CKM3/4-3505012 | 输液阀垫 Seat, Valve | | 1 | |
| 11 | CKM3/4-3505015 | 保护罩 Boots | | 1 | |
| 12 | CKM3/4-3505020 | 推杆总成 Rod, Push | | 1 | |
| 13 | | 支耳 Clevis | | 1 | |
| 14 | GB6170 | 螺母 Nut | M8 | 1 | |

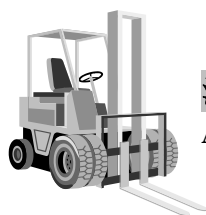


手制动操纵

Hand Brake System

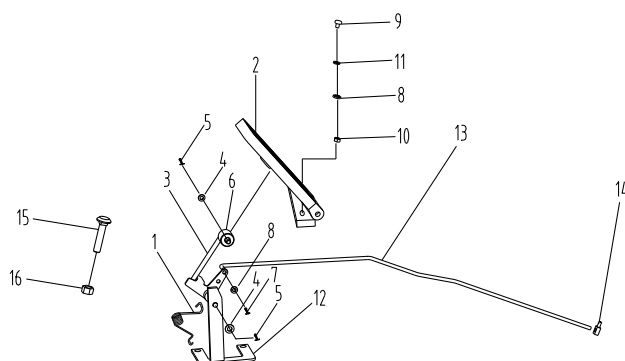


| 序号 Item No. | 零件图号 Part No. | 零部件名称 Part Description | 规格尺寸 Description | 数量 Q`ty | 备注 Remark |
|----------------|------------------|---------------------------|---------------------|------------|--------------|
| 01 | A6K6-50251 | 手制动操纵器 Lever Brake | | 1 | |
| 02 | GB5783 | 螺栓 Bolt | M10×45 | 2 | |
| 03 | GB6170 | 螺母 Nut | M10 | 2 | |
| 04 | GB93 | 垫圈 Washer | 10 | 2 | |
| 05 | GB97.1 | 垫圈 Washer | 10 | 2 | |

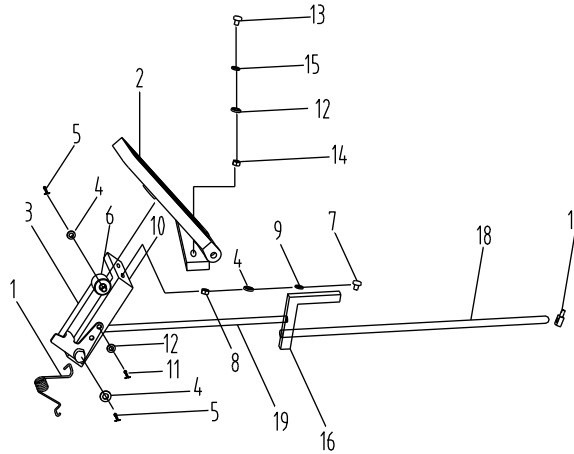


油门操纵

Accelerator Pedal

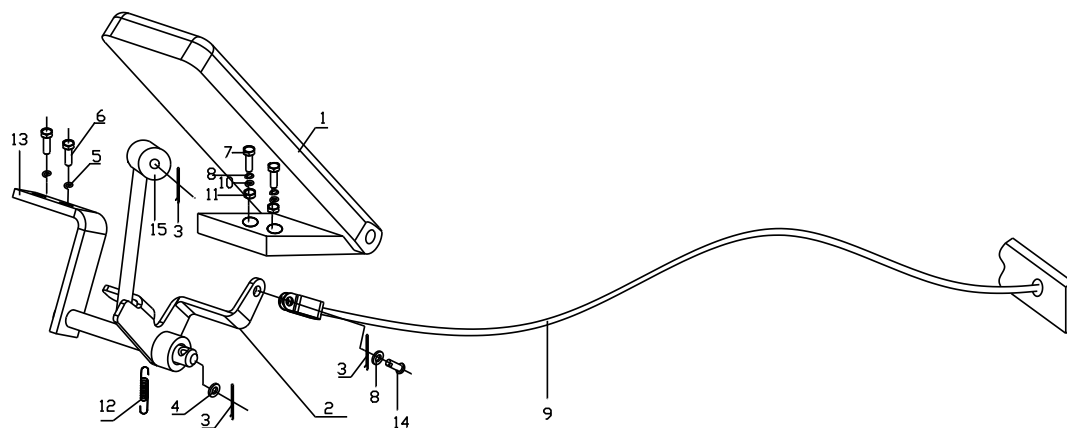


| 序号 Item No. | 零件图号 Part No. | 零部件名称 Part Description | 规格尺寸 Description | 数量 Q`ty | 备注 Remark |
|----------------|------------------|---------------------------|---------------------|------------|--------------|
| 01 | 30X6400001 | 弹簧 Spring | | 1 | ①②③④ |
| 02 | H24C5-60201 | 油门踏板总成 Pedal | | 1 | ①②③④ |
| 03 | 30XDB6420000 | 摇臂总成 Link | | 1 | ①②③④ |
| 04 | GB97.1 | 垫圈 Washer | 8 | 2 | ①②③④ |
| 05 | GB91 | 销 Pin | 2×12 | 2 | ①②③④ |
| 06 | 30XDB6400001 | 尼龙滚子 Roll | | 1 | ①②③④ |
| 07 | GB91 | 销 Pin | 2×10 | 2 | ①②③④ |
| 08 | GB97.1 | 垫圈 Washer | 6 | 4 | ①②③④ |
| 09 | GB5783 | 螺栓 Bolt | M6×16 | 2 | ①②③④ |
| 10 | GB6170 | 螺母 Nut | M6 | 4 | ①②③④ |
| 11 | GB93 | 垫圈 Washer | 6 | 2 | ①②③④ |
| 12 | 15WAB6410000 | 支架 Bracket | | 1 | ①②③④ |
| 12 | 30XDB6410000 | 支架 Bracket | | 1 | ④ |
| 13 | 15WAB6400001 | 油门拉杆 Shank | | 1 | ① |
| 13 | 15WBB6400001 | 油门拉杆 Shank | | 1 | ② |
| 13 | 15WCB6400001 | 油门拉杆 Shank | | 1 | ③ |
| 13 | 15XAB6400002 | 油门拉杆 Shank | | 1 | ④ |
| 14 | 30X64A00007 | 连接块 Block | | 1 | ①②③④ |
| 15 | 30X6400003 | 限位螺栓 Screw | | 1 | ①②③ |
| 16 | GB6171 | 螺母 Nut | M12×1.25 | 2 | ①②③ |
| | | | | | |

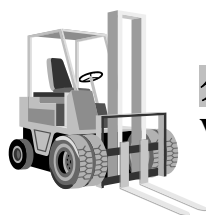


| 序号 Item No. | 零件图号 Part No. | 零部件名称 Part Description | 规格尺寸 Description | 数量 Q`ty | 备注 Remark |
|----------------|------------------|---------------------------|---------------------|------------|--------------|
| 01 | 30X6400001 | 弹簧 Spring | | 1 | ⑤ |
| 02 | H24C5-60201 | 油门踏板总成 Pedal | | 1 | ⑤ |
| 03 | 30XDB6420000 | 摇臂总成 Link | | 1 | ⑤ |
| 04 | GB97.1 | 垫圈 Washer | 8 | 2 | ⑤ |
| 05 | GB91 | 销 Pin | 2×12 | 2 | ⑤ |
| 06 | 30XDB6400001 | 尼龙滚子 Roll | | 1 | ⑤ |
| 07 | GB5781 | 螺栓 Bolt | M8×30 | 2 | ⑤ |
| 08 | GB6170 | 螺母 Nut | M8 | 2 | ⑤ |
| 09 | GB93 | 垫圈 Washer | 8 | 2 | ⑤ |
| 10 | 30XDB6410000 | 支架 Bracket | | 1 | ⑤ |
| 11 | GB91 | 销 Pin | 2×10 | 4 | ⑤ |
| 12 | GB97.1 | 垫圈 Washer | 6 | 8 | ⑤ |
| 13 | GB67 | 螺钉 Screw | M6×16 | 2 | ⑤ |
| 14 | GB6170 | 螺母 Nut | M6 | 6 | ⑤ |
| 15 | GB93 | 垫圈 Washer | 6 | 2 | ⑤ |
| 16 | 30X64A40000 | 传动杆 Shank | | 1 | ⑤ |
| 17 | 30X64A00004 | 块 Block | | 1 | ⑤ |
| 18 | 30X64A00006 | 后拉杆 Back Shank | | 1 | ⑤ |
| 19 | 15XFB6400001 | 前拉杆 Front Shank | | 1 | ⑤ |

FORKLIFT PARTS CATALOGUE

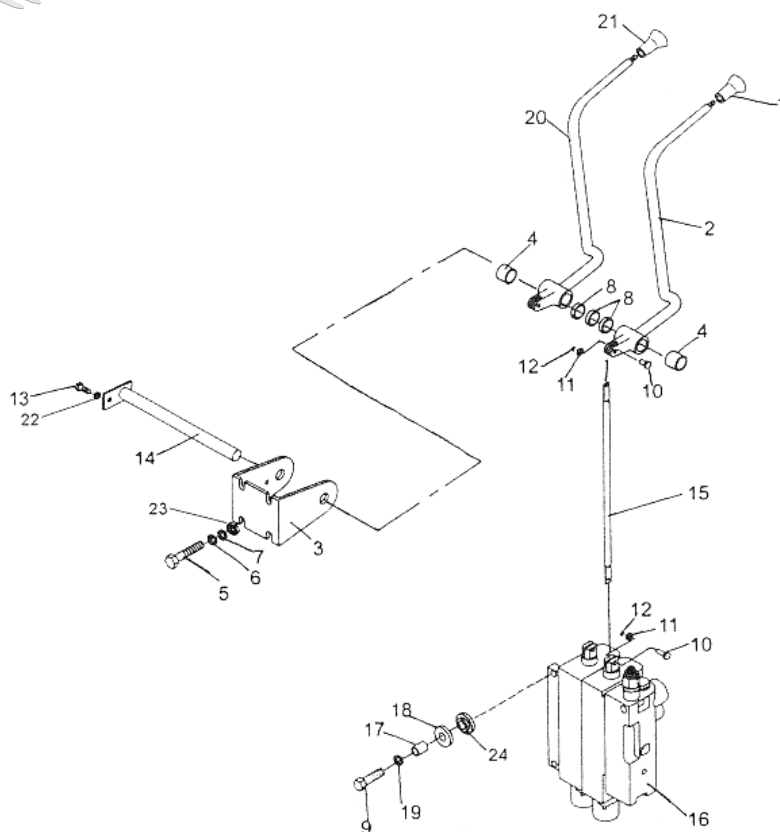


| 序号 Item No. | 零件图号 Part No. | 零部件名称 Part Description | 规格尺寸 Description | 数量 Q`ty | 备注 Remark |
|----------------|------------------|---------------------------|---------------------|------------|--------------|
| 01 | H24C5-60201 | 油门踏板 Pedal | | 1 | ⑥ |
| 02 | 15VFB64D20000 | 摇臂总成 Link | | 1 | ⑥ |
| 03 | GB91 | 销 Pin | 2×12 | 3 | ⑥ |
| 04 | GB97.1 | 垫圈 Washer | 10 | 1 | ⑥ |
| 05 | GB97.1 | 垫圈 Washer | 8 | 2 | ⑥ |
| 06 | GB5781 | 螺栓 Bolt | M8×16 | 2 | ⑥ |
| 07 | GB5783 | 螺栓 Bolt | M6×16 | 2 | ⑥ |
| 08 | GB97.1 | 垫圈 Washer | 6 | 3 | ⑥ |
| 09 | 30V6440000 | 油门拉线 Line | | 1 | ⑥ |
| 10 | GB93 | 垫圈 Washer | 6 | 2 | ⑥ |
| 11 | GB6170 | 螺母 Nut | M6 | 2 | ⑥ |
| 12 | 30X6400001 | 弹簧 Spring | | 1 | ⑥ |
| 13 | 30X6410000 | 托架 Bracket | | 1 | ⑥ |
| 14 | GB882 | 销轴 Pin | B6×14 | 1 | ⑥ |
| 15 | 30XDB6400001 | 尼龙滚子 Roll | | 1 | ⑥ |



分配器操纵

Valve Control System



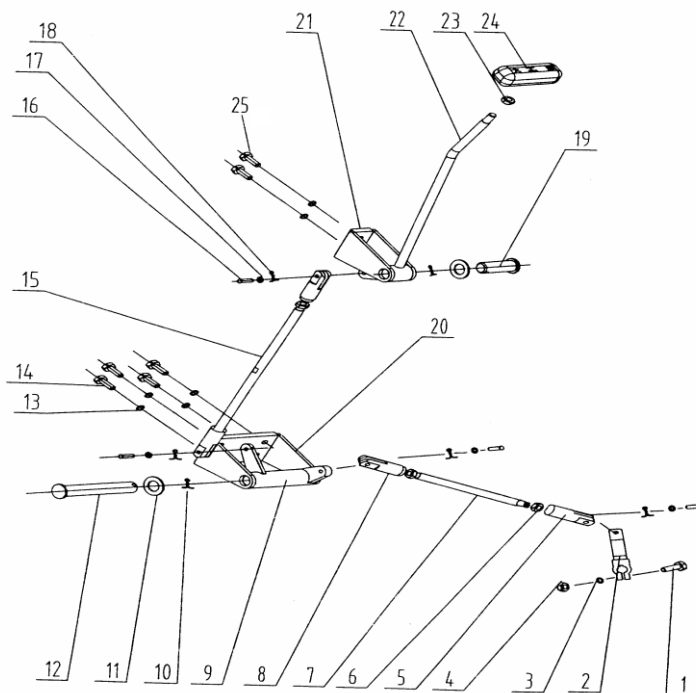
| 序号 Item No. | 零件图号 Part No. | 零部件名称 Part Description | 规格尺寸 Description | 数量 Q`ty | 备注 Remark |
|----------------|------------------|---------------------------|---------------------|------------|--------------|
| 1 | L91273-21200D | 手柄球 Knob | | 1 | |
| 2 | 30XDB6820000 | 操纵杆组件(B)Lever, Tilt(B) | | 1 | |
| 3 | 30XDB6800006 | 操纵杆托架 Bracket Lever | | 1 | |
| 4 | FZ-1.16.37 | 衬套 Bushing | | 2 | |
| 5 | GB5781 | 螺栓 Bolt | M8×25 | 4 | |
| 6 | GB97.1 | 垫圈 Washer | 8 | 8 | |
| 7 | GB859 | 垫圈 Washer | 8 | 4 | |
| 8 | 30X6800005 | 薄垫片 Shim | | 3 | |
| 9 | GB5786 | 螺栓 Bolt | M10×1.25×35 | 3 | |

FORKLIFT PARTS CATALOGUE

| 序号 Item No. | 零件图号 Part No. | 零部件名称 Part Description | 规格尺寸 Description | 数量 Q'ty | 备注 Remark |
|----------------|------------------|---------------------------|---------------------|------------|--------------|
| 10 | 30X6800001 | 销轴 Pin | | 4 | |
| 11 | GB97.1 | 垫圈 Washer | 5 | 4 | |
| 12 | GB91 | 销 Pin | 1.6×10 | 4 | |
| 13 | GB5781 | 螺栓 Bolt | M6×12 | 1 | |
| 14 | 30X6830000 | 销轴总成 Pin, Lever | | 1 | |
| 15 | 30V6800002 | 杆 Rob | | 2 | |
| 16 | CDB2-F15 | 多路换向阀 Control valve | | 1 | |
| 17 | 30XDB6800001 | 限位钢管 Collar | | 3 | |
| 18 | GB96.1 | 垫圈 Washer | 10 | 3 | |
| 19 | GB93 | 垫圈 Washer | 10 | 3 | |
| 20 | 30XDB6810000 | 操纵杆组件 (A) Lever, tilt | | 1 | |
| 21 | L91273-21300D | 手柄球 Knob, tilt | | 1 | |
| 22 | GB93 | 垫圈 Washer | 6 | 1 | |
| 23 | GB6170 | 螺母 Nut | M8 | 4 | |
| 24 | 30XDB6800002 | 减震垫 Rubber | | 3 | |
| | | | | | |
| | | | | | |
| | | | | | |
| | | | | | |



变速箱操纵
Valve Control System



| 序号 Item No. | 零件图号 Part No. | 零部件名称 Part Description | 规格尺寸 Description | 数量 Q'ty | 备注 Remark |
|----------------|------------------|---------------------------|---------------------|------------|--------------|
| 1 | GB5783 | 螺栓 Bolt | M8×35 | 1 | ④ |
| 2 | 30XDB6510000 | 连杆 Linkage | | 1 | ④ |
| 3 | GB93 | 垫圈 Washer | 8 | 7 | ④ |
| 4 | GB6170 | 螺母 Nut | M8 | 1 | ④ |
| 5 | 30XDB6500001 | 接头 I Cap | | 2 | ④ |
| 6 | A847.23.1.2-6 | 光小六角螺母 Nut | | 2 | ④ |
| 7 | 30XDB6500002 | 调整杆 Adjust rod | | 1 | ④ |
| 8 | 30XDB6500003 | 接头 II Cap | | 2 | ④ |
| 9 | 30XDB6520000 | 组合摇臂 Connect rocker | | 1 | ④ |
| 10 | GB91 | 销 Pin | 5×30 | 2 | ④ |

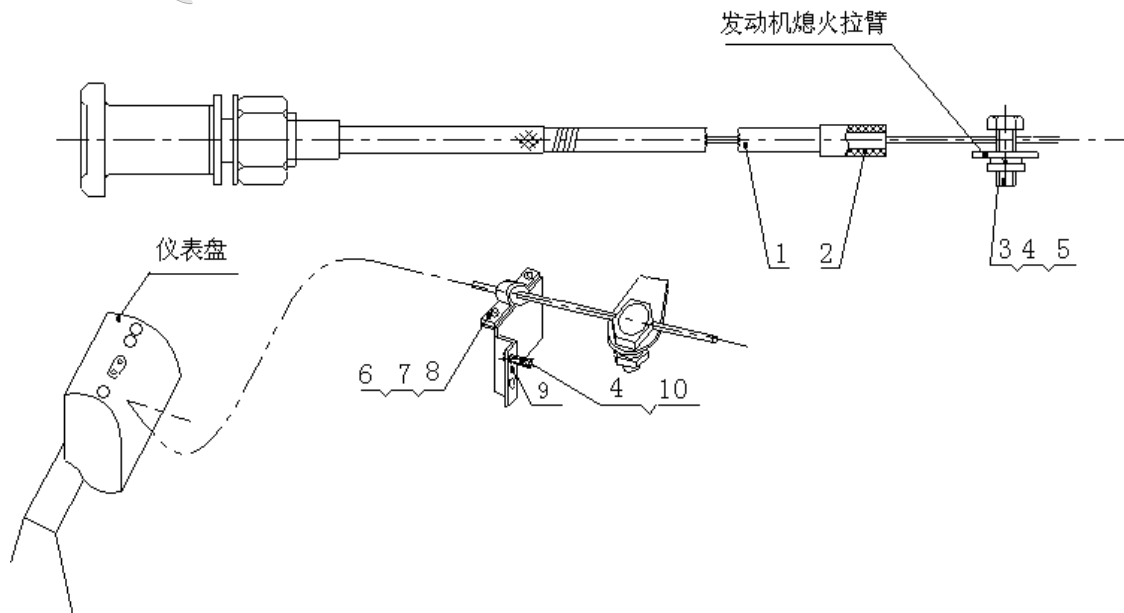
FORKLIFT PARTS CATALOGUE

| 序号 Item No. | 零件图号 Part No. | 零部件名称 Part Description | 规格尺寸 Description | 数量 Q'ty | 备注 Remark |
|----------------|------------------|---------------------------|---------------------|------------|--------------|
| 11 | GB97.1 | 垫圈 Washer | 20 | 2 | ④ |
| 12 | 30XDB6500004 | 销轴 Pin | | 1 | ④ |
| 13 | GB97.1 | 垫圈 Washer | 8 | 6 | ④ |
| 14 | GB5783 | 螺栓 Bolt | M8×25 | 4 | ④ |
| 15 | 30XDB6500005 | 调整杆 II Adjust rod | | 1 | ④ |
| 16 | GB882 | 销轴 Pin | B6×20 | 4 | ④ |
| 17 | GB97.1 | 垫圈 Washer | 6 | 4 | ④ |
| 18 | GB91 | 销 Pin | 2×14 | 4 | ④ |
| 19 | GB882 | 销轴 Pin | B20×50 | 1 | ④ |
| 20 | 30XDB6500006 | 支架 I Support,shaft | | 1 | ④ |
| 21 | 30XDB6530000 | 支架 II Support,shaft | | 1 | ④ |
| 22 | 30XDB6540000 | 操纵杆总成 Control,lever | | 1 | ④ |
| 23 | GB6172.1 | 螺母 Nut | M10 | 3 | ④ |
| 24 | 30XDB6550000 | 手柄总成 Hand,lever | | 1 | ④ |
| 25 | GB5783 | 螺栓 Bolt | M8×20 | 2 | ④ |



熄火操纵

Choke System

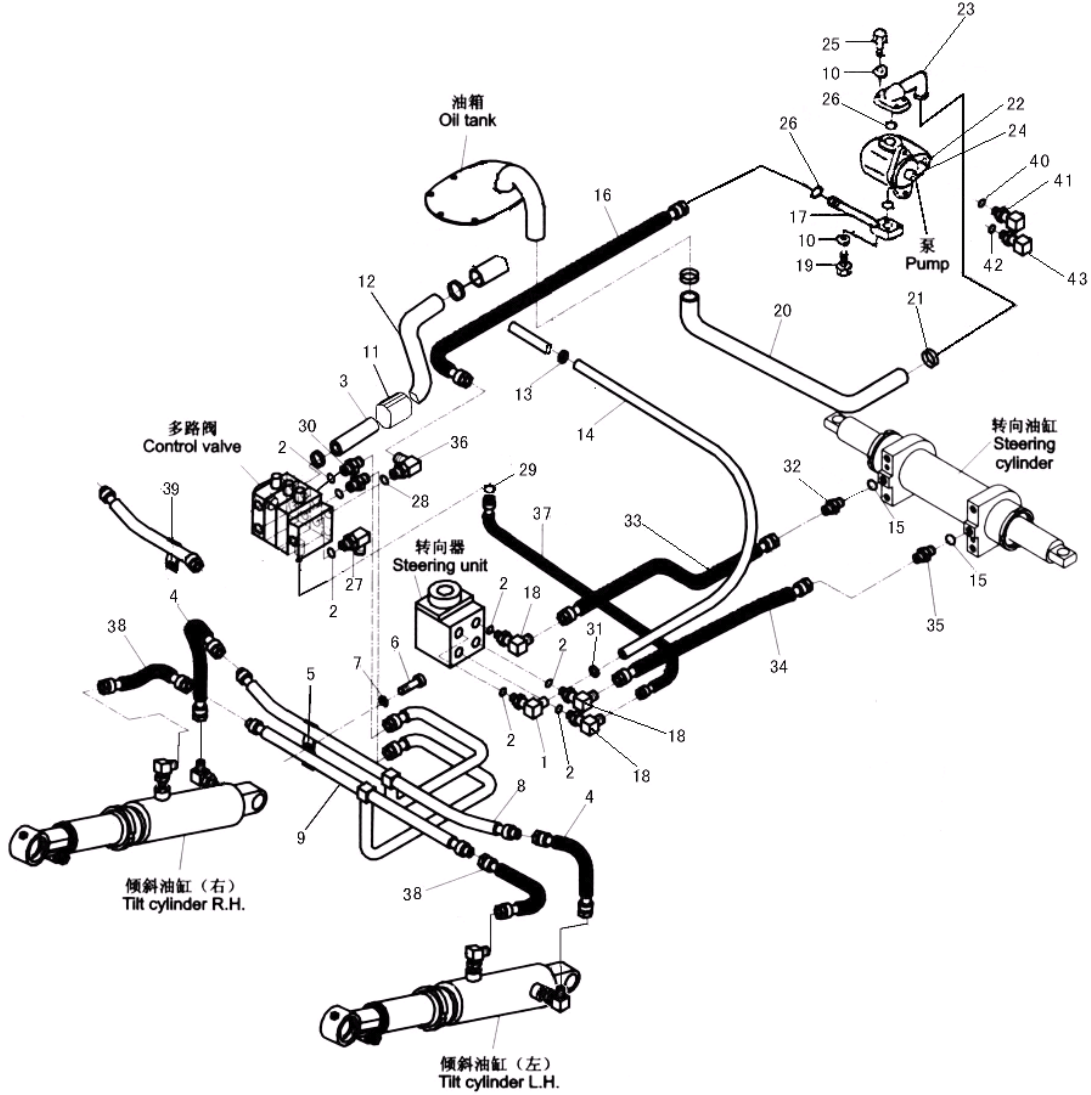


| 序号 Item No. | 零件图号 Part No. | 零部件名称 Part Description | 规格尺寸 Description | 数量 Q'ty | 备注 Remark |
|----------------|------------------|---------------------------|---------------------|------------|--------------|
| 1 | | 风门拉线 Line | L=1800 | 1 | ②③④ |
| 1 | 15WAB6610000 | 熄火拉线总成 Line | | 1 | ① |
| 2 | 30X6610001 | 套 Cannula | | 1 | ②③④ |
| 3 | 20W3100003 | 熄火线螺栓 Bolt | | 1 | ②③④ |
| 3 | GB882 | 销轴 Pin | B6×16 | 1 | ① |
| 4 | GB93 | 垫圈 Washer | 6 | 3 | ②③④ |
| 4 | GB91 | 销 Pin | 1.6×12 | 1 | ① |
| 5 | GB6170 | 螺母 Nut | M6 | 1 | ②③④ |
| 6 | GB67 | 螺钉 Bolt | M5×10 | 2 | ②③④ |
| 7 | 30W6600001 | 夹子 Clip | | 1 | ②③④ |
| 8 | GB93 | 垫圈 Washer | 5 | 2 | ②③④ |
| 9 | 30XDA6600001 | 支板 Under prop | | 1 | ②③④ |
| 10 | GB5781 | 螺栓 Bolt | M6×20 | 2 | ②③④ |



整车液压

Hydraulic System



| 序号 Item No. | 零件图号 Part No. | 零部件名称 Part Description | 规格尺寸 Description | 数量 Q`ty | 备注 Remark |
|----------------|------------------|---------------------------|---------------------|------------|--------------|
| 01 | J20.3-FB6-19a | P 型接头 P-Nipple | 19a | 1 | ①②③④ |
| 01 | 30V7000011 | 接头体 P-Nipple | | 1 | ⑤⑥ |
| 02 | GB3452.1 | O 型密封圈 O-Ring | 17×2.65 | 7 | |
| 03 | 30XFA7000015 | 回油管 Hose | | 1 | ①②③④⑤ |
| 03 | 15VFB71D00001 | 回油管 1 Hose | | 1 | ⑥ |
| 04 | 15WAB7100002 | 倾斜胶管 Hose | | 2 | |
| 05 | 30X7000014 | 管夹 Clip | | 6 | |

DALIAN FORKLIFT CO., LTD.

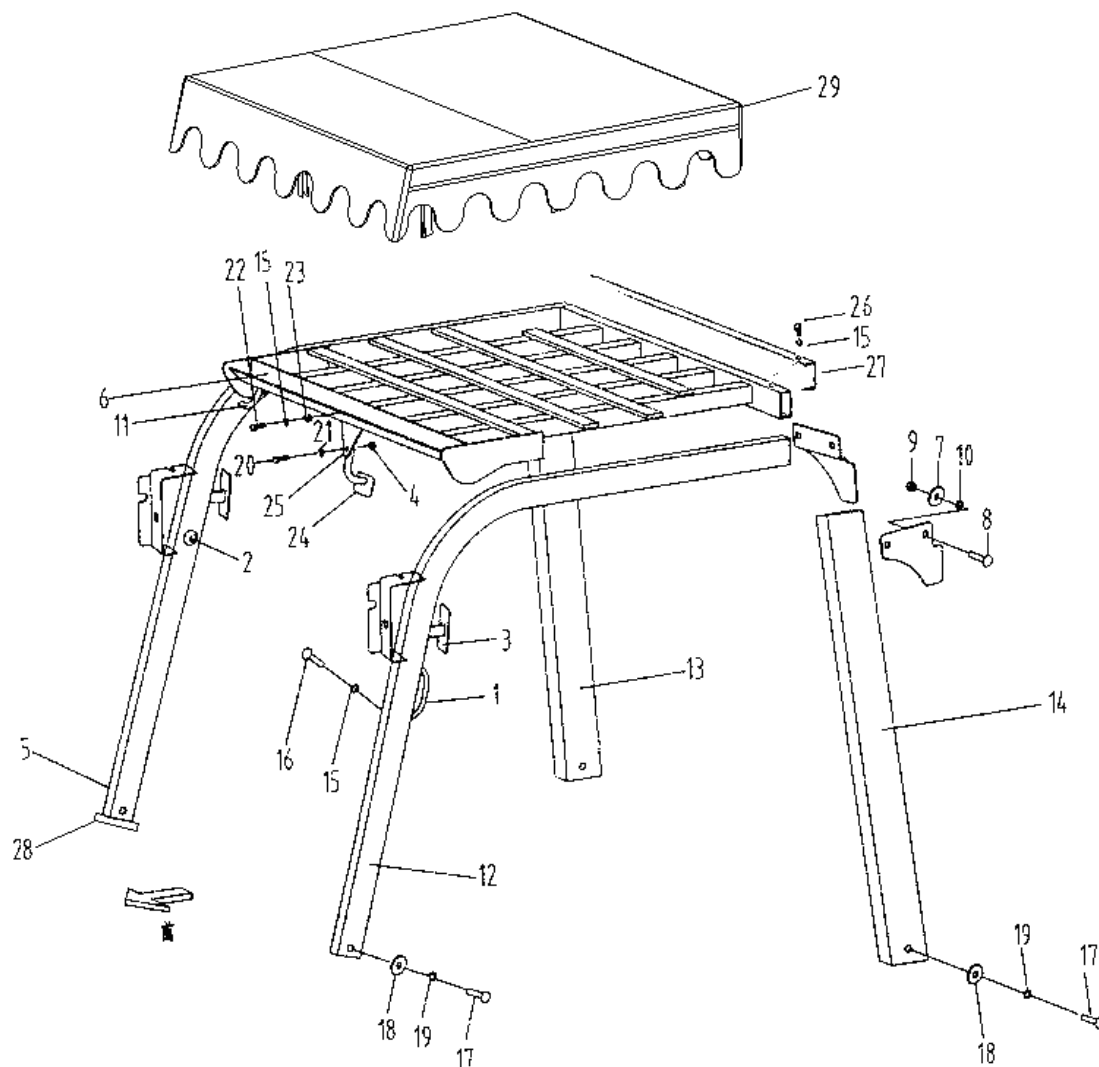
| 序号 ItemNo. | 零件图号 Part No. | 零部件名称 Part Description | 规格尺寸 Description | 数量 Q'ty | 备注 Remark |
|---------------|------------------|---------------------------|---------------------|------------|--------------|
| 06 | GB5781 | 螺栓 Bolt | M8×16 | 6 | |
| 07 | GB93 | 垫圈 Washer | 8 | 6 | |
| 08 | 15WAB7120000 | 倾斜油管 Hose H.P | | 1 | |
| 09 | 15WAB7110000 | 倾斜油管 Hose H.P | | 1 | |
| 10 | GB93 | 垫圈 Washer | 10 | 8 | ①②③④⑤ |
| 11 | YK0812 | 滤油器 Filter | | 1 | |
| 12 | 15WAB7100007 | 回油管 Hose | | 1 | ①②③④ |
| | 15WAB7100001 | 回油接管 Hose | | 1 | ①②③④ |
| | HG/T3041 | 输油胶管 Hose | 32×42×600 | 1 | ①②③④ |
| 12 | HG/T3041 | 输油胶管 | 32×42×140 | 1 | ⑤ |
| 12 | 15VFB71D00002 | 回油管 2 Hose | | 1 | ⑥ |
| 13 | JB/ZQ3777 | 喉箍 Clip | 16-22 | 2 | |
| 14 | HG/T3041 | 输油胶管 Hose | 13×21×900 | 1 | |
| 15 | GB3452.1 | O 形密封圈 O-Ring | 14×2.65 | 4 | ①②③④⑤ |
| 15 | GB3452.1 | O 形密封圈 O-Ring | 14×2.65 | 2 | ⑥ |
| 16 | 15WAB7100005 | 胶管接头 Hose Joint | 16 II -1000 | 1 | ①②③④ |
| 16 | JB1887 | 胶管接头 Hose Joint | 16 II -910 | 1 | ⑤ |
| 16 | 20XDB7100002 | 油泵出油管 Hose | | 1 | ⑥ |
| 17 | 15WAB7130000 | 出油口法兰 Flange | | 1 | ①②③④ |
| 17 | 15XFB7130000 | 出油口法兰 Flange | | | ⑤ |
| 18 | J20.3-FB1-8c | 管接头体 Nipple | 8c | 3 | |
| 19 | GB5785 | 螺栓 Bolt | M10×1.25×40 | 4 | ①②③④⑤ |
| 20 | 15WAB7100004 | 进油管 Hose | | 1 | ① |
| 20 | 15XAB71D00001 | 吸油管 Hose | | 1 | ②③④ |
| 20 | 30X700010 | 吸油管 Hose | | 1 | ⑤ |
| 20 | 15VFB71D00003 | 油泵吸油管 Hose | | 1 | ⑥ |
| 21 | JB/ZQ3777 | 喉箍 Clip | 35-50 | 6 | |
| 22 | CBT-F423-AFHL | 齿轮油泵 Pump | | 1 | ①②③④ |
| 22 | CBT-F430-AFΦL | 油泵 Pump | | 1 | ⑤ |
| 22 | CBHZG-F32-ALΦ | 齿轮泵 Pump | | 1 | ⑥ |
| 23 | 15W7020000 | 进油口法兰 Flange | | 1 | ① |

FORKLIFT PARTS CATALOGUE

| 序号 ItemNo. | 零件图号 Part No. | 零部件名称 Part Description | 规格尺寸 Description | 数量 Q'ty | 备注 Remark |
|---------------|------------------|---------------------------|---------------------|------------|--------------|
| 23 | 15XAB71D10000 | 进油口法兰 Flange | | 1 | ②③④ |
| 23 | 30X7020000 | 油泵进油口法兰 Flange | | 1 | ⑤ |
| 24 | 30X7000011 | 垫 Shim | | 1 | ⑤ |
| 25 | GB5786 | 螺栓 Bolt | M10×1.25×25 | 4 | ①②③④⑤ |
| 26 | GB3452.1 | O 形密封圈 O-Ring | 31.5×3.55 | 2 | ①②③④⑤ |
| 27 | J20.3-FB4-14b | 管接头 Joint | 14b | 1 | |
| 28 | GB3452.1 | O 形密封圈 O-Ring | 18×2.65 | 1 | |
| 29 | GB3452.1 | O 形密封圈 O-Ring | 7.1×1.8 | 2 | ①②③④⑤ |
| 30 | J20.3-FB1-6b | 管接头体 Joint | 6b | 2 | |
| 31 | JB/ZQ3777 | 喉箍 Clip | 22~30 | 2 | ⑤⑥ |
| 32 | J20.3-FB4-10b | 管接头 Joint | 10b | 1 | ②③④ |
| 33 | JB1887 | 胶管接头 Hose Joint | 8 I -1700 | 1 | ②③④ |
| 34 | JB1887 | 胶管接头 Hose Joint | 8 I -1500 | 1 | ②③④ |
| 35 | J20.3-FB1-8b | 管接头 Joint | 8b | 1 | ②③④ |
| 36 | J20.3-FB4-18 | 管接头 Joint | 18 | 1 | ②③④ |
| 37 | 20XDB7100001 | 胶管接头 Hose Joint | 8 I -400 | 1 | ②③④ |
| 38 | 15WAB7100003 | 倾斜缸胶管 Hose | | 2 | |
| 39 | 20XDB7104000 | 接管总成 Hose | | 1 | ②③④ |
| 40 | JB982 | 垫圈 Washer | 33 | 1 | ⑥ |
| 41 | J20.3-FB6-32 | P 型接头 P-Joint | 32 | 1 | ⑥ |
| 42 | GB3452.1 | O 形密封圈 O-Ring | 20×2.65 | 1 | ⑥ |
| 43 | J20.3-FB1-16 | 管接头体 Joint | 16 | 1 | ⑥ |



护顶架
Overhead Guard



| 序号 Item No. | 零件图号 Part No. | 零部件名称 Part Description | 规格尺寸 Description | 数量 Q'ty | 备注 Remark |
|----------------|------------------|---------------------------|---------------------|------------|--------------|
| 01 | 5031240-A1 | 把手 Handle | | 1 | |
| 02 | 30X0200003 | 出线胶圈 Ring, Rubber | | 2 | |
| 03 | CA-1046 | 倒车镜 Viewfinder | | 2 | |
| 04 | GB6170 | 螺母 Nut | M8 | 3 | |
| 05 | 15XAB02D13000 | 前右腿总成 Leg,R.H.front | | 1 | |
| 06 | 15XAB02D12000 | 顶架总成 Overhead Guard | | 1 | |
| 07 | GB97.1 | 垫圈 Washer | 12 | 4 | |

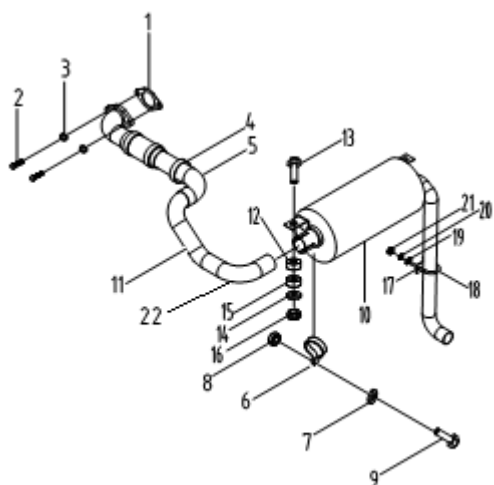
FORKLIFT PARTS CATALOGUE

| 序号 Item No. | 零件图号 Part No. | 零部件名称 Part Description | 规格尺寸 Description | 数量 Q'ty | 备注 Remark |
|----------------|------------------|---------------------------|---------------------|------------|--------------|
| 08 | 30V0200001 | 螺栓 Bolt | | 4 | |
| 09 | GB6170 | 螺母 Nut | M12 | 4 | |
| 10 | GB93 | 垫圈 Washer | 12 | 4 | |
| 11 | 30V0200002 | 胶管 Hose | | 1 | |
| 12 | 15XAB02D11000 | 前左腿总成 Leg,L.H.front | | 1 | |
| 13 | 15XAB02D30000 | 后右腿总成 Leg,R.H.rear | | 1 | |
| 14 | 15XAB02D20000 | 后左腿总成 Leg,R.H.rear | | 1 | |
| 15 | GB93 | 垫圈 Washer | 6 | 4 | |
| 16 | GB5781 | 螺栓 Bolt | M6×25 | 2 | |
| 17 | L91215-04700 | 螺栓 Bolt | | 4 | |
| 18 | GB96.1 | 垫圈 Washer | 16 | 4 | |
| 19 | GB93 | 垫圈 Washer | 16 | 4 | |
| 20 | GB5781 | 螺栓 Bolt | M8×35 | 1 | |
| 21 | GB93 | 垫圈 Washer | 8 | 1 | |
| 22 | GB5781 | 螺栓 Bolt | M6×20 | 2 | |
| 23 | GB6170 | 螺母 Nut | 6 | 2 | |
| 24 | CA6440 | 后视镜 Viewfinder | | 1 | |
| 25 | 30XDB0200003 | 联板 Board | | 1 | |
| 26 | GB67 | 螺钉 Bolt | M6×10 | 3 | |
| 27 | 15XAB02D40000 | 护盖 Cover | | 1 | |
| 28 | 20XDB0200001 | 密封圈 Ring | | 2 | |
| 29 | 15XAB02D50000 | 防雨篷 Canvas, Roof | | 1 | 选装件 |



消音器

Muffler System



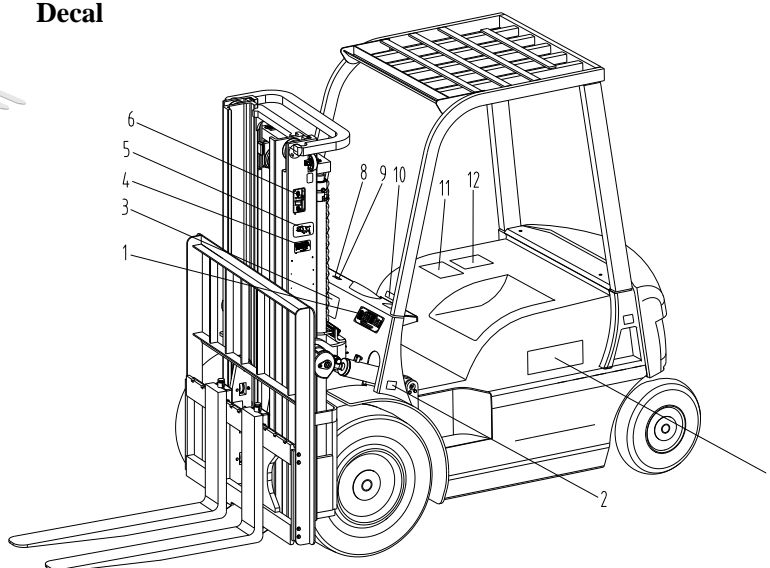
| 序号 Item No. | 零件图号 Part No. | 零部件名称 Part Description | 规格尺寸 Description | 数量 Q`ty | 备注 Remark |
|----------------|------------------|---------------------------|---------------------|------------|--------------|
| 01 | 15W3200001 | 垫 Shim | | 1 | ① |
| 01 | 30X3200001 | 垫 Shim | | 1 | ⑤ |
| 02 | GB5783 | 螺栓 Bolt | M10×25 | 2 | ① |
| 02 | GB6170 | 螺母 Nut | M10 | 2 | ②③④ |
| 02 | GB6171 | 螺母 Nut | M10×1.25 | 4 | ⑤ |
| 02 | GB6170 | 螺母 Nut | M8 | 2 | ⑥ |
| 03 | GB93 | 垫圈 Washer | 10 | 2 | ①②③④ |
| 03 | GB93 | 垫圈 Washer | 10 | 4 | ⑤ |
| 03 | GB93 | 垫圈 Washer | 8 | 2 | ⑥ |
| 04 | JB/ZQ3777 | 喉箍 Nipple | 35-50 | 4 | |
| 05 | 15WAB3200003 | 编织罩 Basketwork | 450×280×1 | 1 | ① |
| 05 | 15XAB3200001 | 编织罩 Basketwork | 450×280×1 | 1 | ②③④ |
| 05 | 15XFB3200003 | 编织罩 Basketwork | 450×280×1 | 1 | ⑤⑥ |
| 06 | 30X3200004 | 管夹 Clip | | 2 | |
| 07 | GB93 | 垫圈 Washer | 8 | 2 | ①②③④ |
| 07 | GB93 | 垫圈 Washer | 8 | 1 | ⑤⑥ |
| 08 | GB6170 | 螺母 Nut | M8 | 1 | ①②③④ |

FORKLIFT PARTS CATALOGUE

| 序号 Item No. | 零件图号 Part No. | 零部件名称 Part Description | 规格尺寸 Description | 数量 Q`ty | 备注 Remark |
|----------------|------------------|---------------------------|---------------------|------------|--------------|
| 08 | GB6170 | 螺母 Nut | M8 | 1 | ⑤⑥ |
| 09 | GB5783 | 螺栓 Bolt | M8×25 | 2 | ①②③④ |
| 09 | GB5783 | 螺栓 Bolt | M8×25 | 1 | ⑤⑥ |
| 10 | 15WAB3210000 | 消音器总成 Muffler | | 1 | ①②③④ |
| 10 | 15XFB3210000 | 消音器总成 Muffler | | 1 | ⑤⑥ |
| 11 | 15WAB3220000A | 进气管 Pipe | | 1 | ① |
| 11 | 15XAB3220000 | 进气管 Pipe | | 1 | ②③④ |
| 11 | 15XFB3220000 | 进气管 Pipe | | 1 | ⑤ |
| 11 | 15VFB3210000 | 排气管 Pipe | | 1 | ⑥ |
| 12 | 30X3200002 | 垫 Shim | | 2 | |
| 13 | GB5782 | 螺栓 Bolt | M10×55 | 2 | |
| 14 | GB97.1 | 垫圈 Washer | 10 | 2 | |
| 15 | 30X3200003 | 垫 Shim | | 4 | |
| 16 | GB6170 | 螺母 Nut | M10 | 2 | |
| 17 | 15WAB3200002 | 调整垫 Adjusting Shim | | 1 | |
| 18 | 15WAB3200001 | U型螺栓 U-Bolt | | 1 | |
| 19 | GB97.1 | 垫圈 Washer | 6 | 2 | |
| 20 | GB93 | 垫圈 Washer | 6 | 2 | ②③④⑤⑥ |
| 21 | GB6170 | 螺母 Nut | M6 | 2 | |
| 22 | 15WAB3200004 | 连接管 Pipe | | 1 | ①②③④ |



标牌组件
Decal



| 序号 Item No. | 零件图号 Part No. | 零部件名称 Part Description | 规格尺寸 Description | 数量 Q`ty | 备注 Remark |
|----------------|------------------|-----------------------------|---------------------|------------|----------------|
| 01 | 20X0700002 | 铭牌 Name plate | | 1 | 国内 home |
| 01 | 20X0700016 | 铭牌 Name plate | | 1 | 国外 Overseas |
| 02 | 15RA0700022 | 轮胎气压标牌 Decal, model | | 1 | |
| 03 | 30X0700004 | 供油系统标牌 Decal, hydraulic | | 1 | 国内 home |
| 03 | 30X0700017 | 供油系统标牌 Decal, hydraulic | | 1 | 国外 Overseas |
| 04 | 15RA0700005 | 载荷曲线牌 Decal, capacity chart | | 1 | 国内 home |
| 04 | 15RA0700018 | 载荷曲线牌 Decal, capacity chart | | 1 | 国外 Overseas |
| 05 | DCJ7.02 | 产品商标 Decal | | 1 | |
| 06 | 30X0700015 | 安全标牌 Decal, safety | | 1 | |
| 07 | 15X0700036 | 车架侧面标牌 Decal, model | | 2 | |
| 08 | 30X0700006 | 倾斜指示标牌 Decal, tilt | | 1 | |
| 09 | 30X0700007 | 升降指示标牌 Decal, lift | | 1 | |
| 10 | 30X0700014 | 警告标牌 Decal, warning | | 1 | |
| 11 | 30X0700009 | 注意事项标牌 Decal, driver | | 1 | 国内 home |
| 11 | 30X0700019 | 注意事项标牌 Decal, driver | | 1 | 国外 Overseas |
| 12 | 30X0700011 | 使用须知标牌 Decal, guide | | 1 | 国内 home |
| 12 | 30X0700020 | 使用须知标牌 Decal, guide | | 1 | 国外 Overseas |

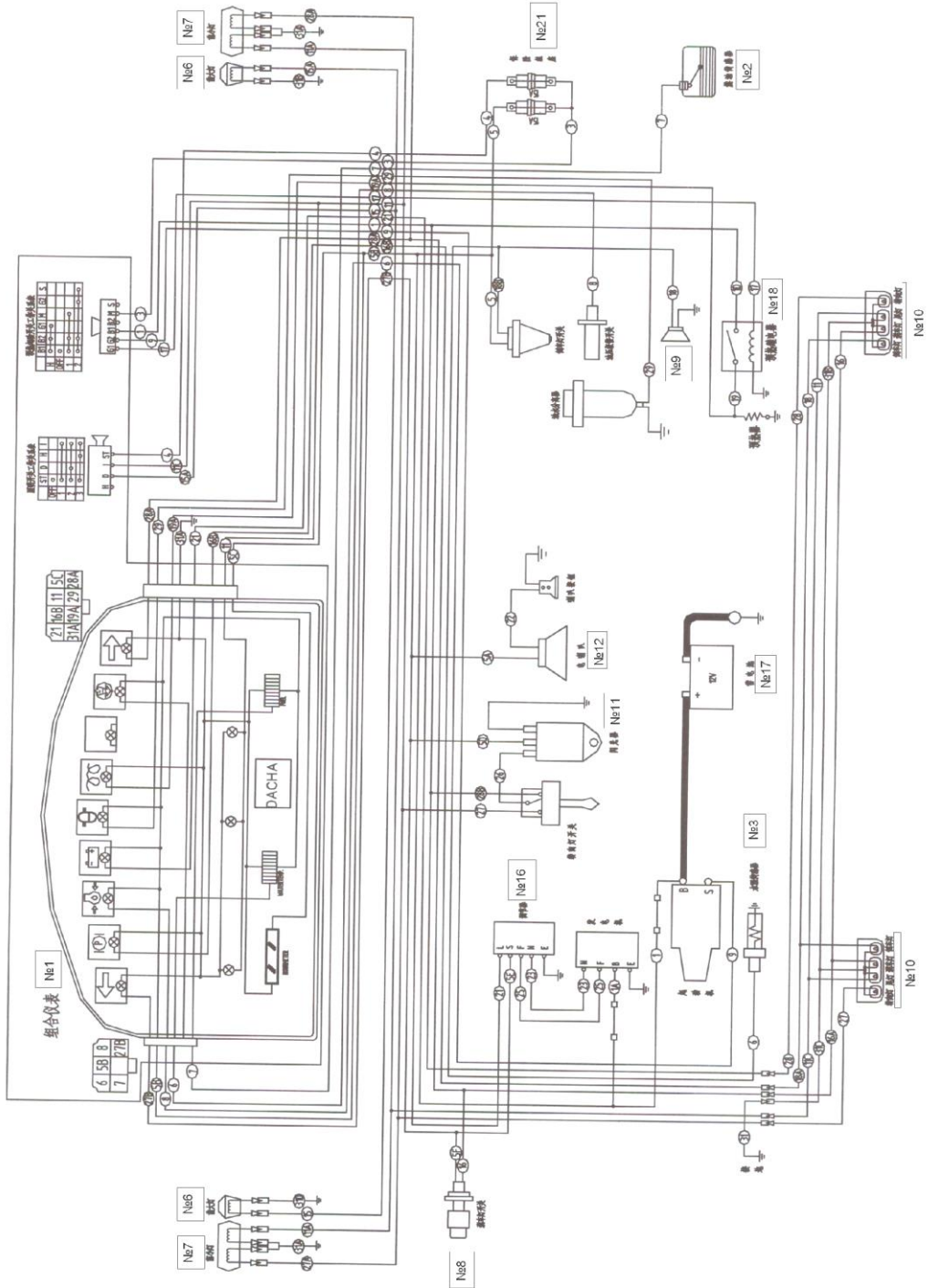


电气系统

Electric System

CPC10AB、CPC15AB、CPC18AB 电气系统

CPC10AB、CPC15AB、CPC18AB电气系统

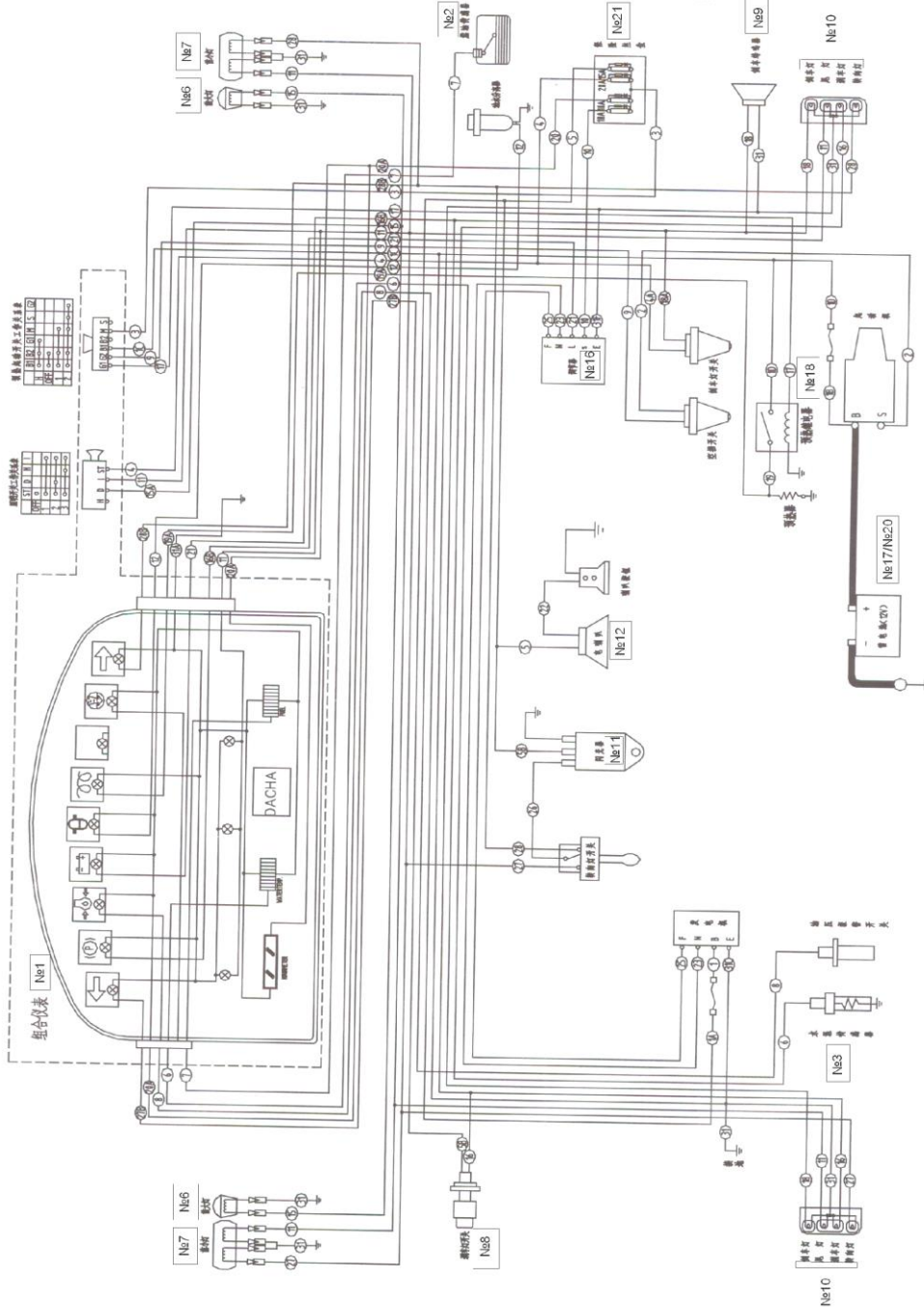




电气系统
Electric System

CPC10BB、CPC15BB、CPC18BB、CPC10CB、CPC15CB、CPC18CB、
CPCD10AB、CPCD15AB、CPCD18AB、CPCD10CB、CPCD15CB、CPCD18CB
电气系统

CPC10BB、CPC15BB、CPC18BB、CPC10CB、CPC15CB、CPC18CB、
CPCD10AB、CPCD15AB、CPCD18AB、CPCD10CB、CPCD15CB、CPCD18CB



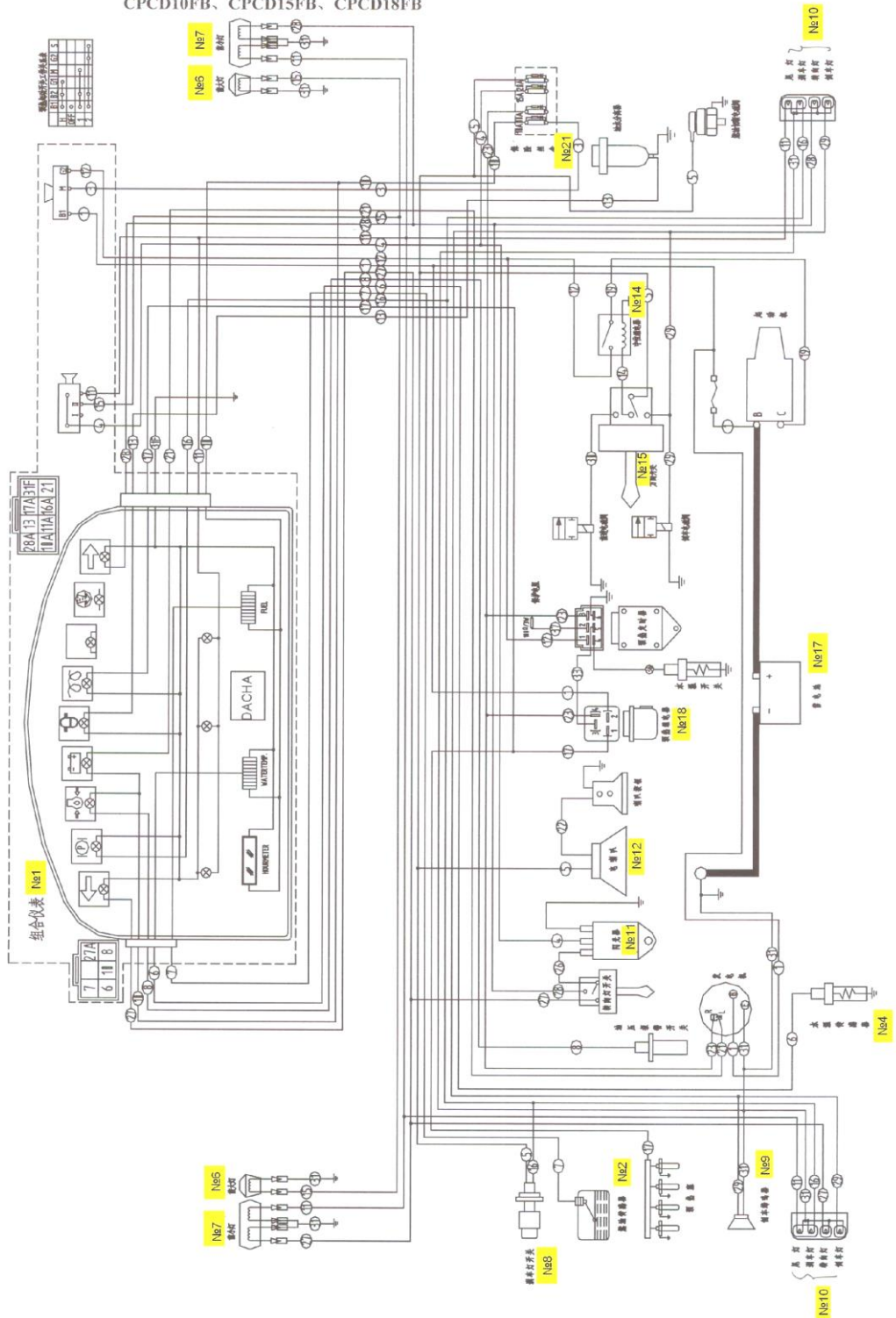


电气系统

Electric System

CPCD10FB、CPCD15FB、CPCD18FB 电气系统

CPCD10FB、CPCD15FB、CPCD18FB

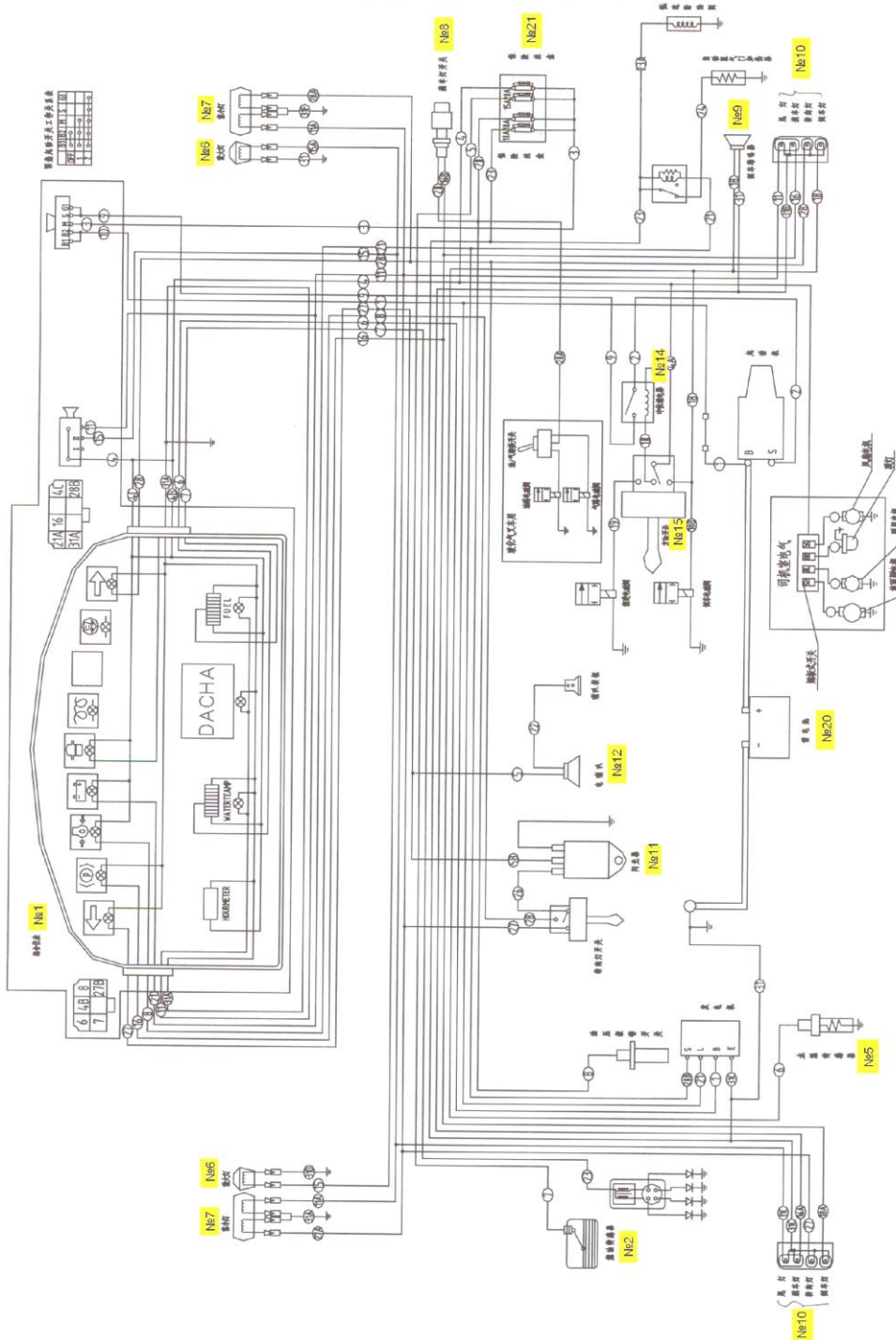




电气系统
Electric System

CPQD10FB、CPQD15FB、CPQD18FB、
CPYD10FB、CPYD15FB、CPYD18FB 电气系统

CPQD10FB、CPQD15FB、CPQD18FB、CPYD10FB、CPYD15FB、CPYD18FB



FORKLIFT PARTS CATALOGUE

| 序号 Item No. | 零件图号 Part No. | 零部件名称 Part Description | | 数量 Q'ty | 备注 Remark |
|----------------|-------------------|---------------------------|------------------------|------------|--------------|
| 01 | H2002/12V | 组合仪表 | Meter ass'y | 1 | |
| 02 | DFO | 燃油传感器 | Fuel sensor | 1 | |
| 03 | DSO-R3/8 | 水温传感器 | Water temp sensor | 1 | ①~④ |
| 04 | DSW-M16×1.5 | 水温传感器 | Water temp sensor | 1 | ⑤ |
| 05 | DSW-Z3/8 | 水温传感器 | Water temp sensor | 1 | ⑥ |
| 06 | WD100×90/12V | 前大灯 | Head lamp | 2 | |
| 07 | QXD160×48/12V | 前组合灯 | Front combination lamp | 2 | |
| 08 | JK205A | 刹车灯开关 | Switch/stop lamp | 1 | |
| 09 | DJB-12B | 倒车蜂鸣器 | Back buzzer | 1 | |
| 10 | XH8-6-1/12V | 后组合灯 | Rear combination lamp | 2 | |
| 11 | SG152 | 闪光器 | Flasher | 1 | |
| 12 | DL124G | 电喇叭 | Electric horn | 1 | |
| 13 | HG4190/012(2)-1Z9 | 继电器 | Relay | 1 | ⑤ |
| 14 | HG4190/012(2)-1Z9 | 继电器 | Relay | 2 | ⑥ |
| 15 | JC-3 | 方向开关 | Switch/direction | 1 | ⑤、⑥ |
| 16 | JFT147-14B | 调节器 | Adjuster | 1 | ①~④ |
| 17 | 95D31Ra | 蓄电池 | Battery | 1 | ①~⑤ |
| 18 | JQ1030/04 | 预热继电器 | Adjuster | 1 | ①~④ |
| 19 | BHb-0-32 | 保险丝 | Fuse | 2 | ① |
| 20 | 65D31Ra | 蓄电池 | Battery | 1 | ⑥ |
| 21 | BX2081X | 保险丝盒 | Fuse box | 1 | |