



4t~x5t X 系列内燃平衡重式叉车

4t~x 5t X Series Internal Combustion Counterbalanced Forklift Truck

门架零件目录

MAST PARTS CATALOG

02/2019



杭叉集团股份有限公司  
HANGCHA GROUP CO., LTD.

**全国客服热线：400-884-7888**

- 地址：中国浙江省杭州市临安区相府路 666 号
- 电话：0571-88926666（总机号）85191117
- 传真：0571-85131772    ■ 邮编：311305
- 网站：<http://www.zjhc.cn>    ■ 电子邮件：[sales@zjhc.cn](mailto:sales@zjhc.cn)

- Address For: OVERSEAS USERS
- Address: 666 Xiangfu Road, Lin'an ,Hangzhou,Zhejiang, China
- ZIP:311305
- Fax: 0086-571-88926789    0086-571-88132890
- Web: <http://www.hcforklift.com>    ■ E-mail: [sales@hcforklift.com](mailto:sales@hcforklift.com)

# 说 明

- 1、本“零件目录”汇集了 4t—x5t X 系列叉车的 2 级宽视野门架、2 级全自由门架、3 级门架零部件。
- 2、查询方法：
  - ①用户可根据叉车的额定载荷、门架的型式查找所需的零部件的序号，根据序号可查得相应的图号或标准号。
  - ②在目录的右上角表示此总成所适用的额定载荷、门架的型式，不通用零件在备注中说明，此外不同起升高度所对应的零件请在附表中区别查询。
- 3、订购零件时，须写明所用叉车的型号，出厂编号，门架高度，所需零部件物料码、名称及订购数量。
- 4、维修更换零部件时，为确保质量，请使用本厂零部件。
- 5、为提高质量，本厂将对某些零部件进行改进，对改进部分在本目录中不能同时一一修改，请用户谅解，欲了解详细情况可与本公司销售公司及备件处联系。

## INFORMATION

- I .This catalogue collects all the parts (components) in series of 4 ton - x5 ton X Series fork lift trucks, such as SIMPLEX, DUPLEX and TRIPLEX.
- II .Looking up methods:
  - ① Users can lookup the part (component) series number according to the truck's rated load and mast types, and then you can find the drawing codes and standards of the part (the component) in terms of the series number.
  - ② On the top right corner, there is an expression of rated load and mast types which are applicable for this assembly. Furthermore , please lookup the parts(components)which used for different lift height distinctively in the Schedule.
- III. When you order the parts (components), the truck's Model, factory number ,mast height, code Number of drawing, name and quantity should be given when ordering the parts or the components.
- IV. It is recommended to use the parts and components made by us for ideal the service and maintenance.
- V. We reserve the right of the change of the truck in construction for improving our products without notice. For the details of changes, please consult with sales department of HANGCHA GROUP CO., LTD.

缩写及代码:	Abbreviations and codes:
<p>A1,A2,A3 ..... 总成序号</p> <p>Assy ..... 总成或组件</p> <p>INC ..... 包含</p> <p>非内置式 ..... 不带侧移或带外挂式侧移的门架</p> <p>内置式 ..... 内置式侧移门架</p>	<p>A1,A2,A3 ..... Item,Assy</p> <p>Assy ..... Assembly</p> <p>INC ..... Including</p> <p>Non-built-in ..... Without Side shifter or with Hanging outside Side shifter for Mast</p> <p>Built-in ..... With Built-in Side shifter for Mast</p>

## 目录 Contents

序号 ITEM	名称 DESCRIPTION	适用车型 SERIAL NO.			页码 PAGE
图 I Fig. I	侧滚轮组 Side rollers	2 级宽视野门架 SIMPLEX	2 级全自由门架 DUPLEX	3 级全自由门架 TRIPLEX	1
图 II Fig. II	链条座组件 Chain seat assy	2 级全自由门架 DUPLEX	3 级全自由门架 TRIPLEX		3
图 III Fig. III	货叉总成 Fork assy	2 级宽视野门架 SIMPLEX	2 级全自由门架 DUPLEX	3 级全自由门架 TRIPLEX	5
图 1 Fig.1	起升组件 Lifting part	2 级宽视野门架	SIMPLEX		6
图 2 Fig.2	链条总成 Chain assy	2 级宽视野门架	SIMPLEX		10
	选配表 1 <Optional Parts List 1>	2 级宽视野门架	SIMPLEX		11
图 3 Fig.3	门架 Mast	2 级宽视野门架	SIMPLEX		12
	选配表 2 <Optional Parts List 2>	2 级宽视野门架	SIMPLEX		14
图 4 Fig.4	货叉架总成 Fork carriage assy	2 级宽视野门架	SIMPLEX		17
图 5 Fig.5	侧移架总成 Sidle carriage assy	2 级宽视野门架 SIMPLEX	2 级全自由门架 DUPLEX	3 级全自由门架 TRIPLEX	18
图 6 Fig.6	左右升降油缸 Lift cylinder, right & left	2 级宽视野门架	SIMPLEX		21
	选配表 3 <Optional Parts List 3>	2 级宽视野门架	SIMPLEX		24
图 7 Fig.7	倾斜油缸 Tilt cylinder	2 级宽视野门架 SIMPLEX	2 级全自由门架 DUPLEX	3 级全自由门架 TRIPLEX	28

序号 ITEM	名称 DESCRIPTION	适用车型 SERIAL NO.	页码 PAGE
图 8 Fig.8	油路系统 Mast piping	2 级宽视野门架 SIMPLEX	31
	选配表 4 <Optional Parts List 4>	2 级宽视野门架 SIMPLEX	33
图 9 Fig.9	起升组件 Lifting part	2 级全自由门架 DUPLEX	34
图 10 Fig.10	链条总成 Chain assy	2 级全自由门架 DUPLEX	38
	选配表 5 <Optional Parts List 5>	2 级全自由门架 DUPLEX	40
图 11 Fig.11	门架 Mast	2 级全自由门架 DUPLEX	41
	选配表 6 <Optional Parts List 6>	2 级全自由门架 DUPLEX	42
图 12 Fig.12	货叉架总成 Fork carriage assyTransmission (III)	2 级全自由门架 DUPLEX	43
图 13 Fig.13	左右升降油缸 Lift cylinder, right & left	2 级全自由门架 DUPLEX	44
	选配表 7 <Optional Parts List 7>	2 级全自由门架 DUPLEX	46
图 14 Fig.14	短升降油缸 Lift cylinder, Short	2 级全自由门架 DUPLEX	47
	选配表 8 <Optional Parts List 8>	2 级全自由门架 DUPLEX	49
图 15 Fig.15	油路系统 Mast piping	2 级全自由门架 DUPLEX	50
	选配表 9 <Optional Parts List 9>	2 级全自由门架 DUPLEX	52

序号 ITEM	名称 DESCRIPTION	适用车型 SERIAL NO.			页码 PAGE
图 16 Fig.16	起升组件 Lifting part	3 级全自由门架	TRIPLEX		53
图 17 Fig.17	链条总成 Chain assy	3 级全自由门架	TRIPLEX		57
	选配表 10 <Optional Parts List 10>	3 级全自由门架	TRIPLEX		58
图 18 Fig.18	门架 Mast	3 级全自由门架	TRIPLEX		59
	选配表 11 <Optional Parts List 11>	3 级全自由门架	TRIPLEX		60
图 19 Fig.19	货叉架总成 Fork carriage assy	3 级全自由门架	TRIPLEX		61
图 20 Fig.20	侧移油缸 Side cylinder	2 级宽视野门架 SIMPLEX	2 级全自由门架 DUPLEX	3 级全自由门架 TRIPLEX	62
图 21 Fig.21	左右升降油缸 Lift cylinder,Right& left	3 级全自由门架	TRIPLEX		63
	选配表 12 <Optional Parts List 12>	3 级全自由门架	TRIPLEX		66
图 22 Fig.22	短升降油缸 Lift cylinder,Short	3 级全自由门架	TRIPLEX		68
	选配表 13 <Optional Parts List 13>	3 级全自由门架	TRIPLEX		70
图 23 Fig.23	油路系统 Mast piping	3 级全自由门架	TRIPLEX		71
	选配表 14 <Optional Parts List 14>	3 级全自由门架	TRIPLEX		74

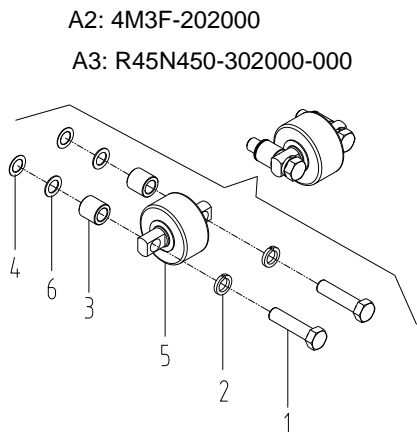
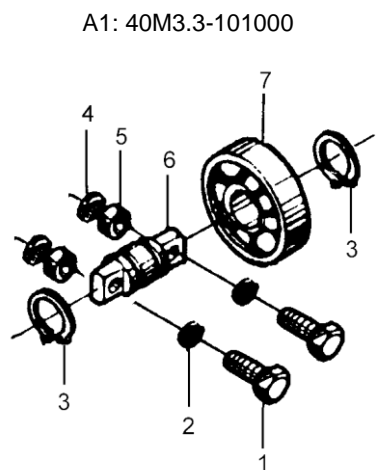
图I 侧滚轮组  
Fig.I Side rollers

2 级宽视野门架  
SIMPLEX

2 级全自由门架  
DUPLEX

3 级全自由门架  
TRIPLEX

4t-x5t



序号 Item	物料码 Part NO.	名称 Description	数量 Qty	备注或适用车型 Remarks Or Serial No.	原物料码 Original Part No.
A1	209500080012	侧滚轮组 Side rollers	1		40M3.3-101000
1	300010030039	螺栓 M12x50 Bolt M12x50	2		G005782-012050-00
2	300030010002	垫圈 12 Washer 12	2		G000093-000012-00
3	300060030014	挡圈 30 Snap ring 30	2		G0894P1-000030-00
4	209500070021	调整垫 Adjusting shim	12		50M3A-120004
5	209700130203	衬圈 Bushing	2		50M3A-120003
6	201200120113	轴 shaft	1		40M3.3-101001
7	209500080006	侧滚轮 Side roller	1		30806-G00
A2	209500070022	侧滚轮组 Side rollers	1		4M3F-202000
A3	209500070014	侧滚轮组 Side rollers	1		R45N450-302000-000
1	300010030039	螺栓 M12x50 Bolt M12x50	2	A2	G005782-012050-00
1	300010030042	螺栓 M12x65 Bolt M12x65	2	A3	G005782-012065-00
2	300030010002	垫圈 12 Washer 12	2		G000093-000012-00
3	209500090055	衬圈 Bushing	2	A2	4M3F-202001
3	209250150001	衬圈 Bushing	2	A3	40M3.3-201001

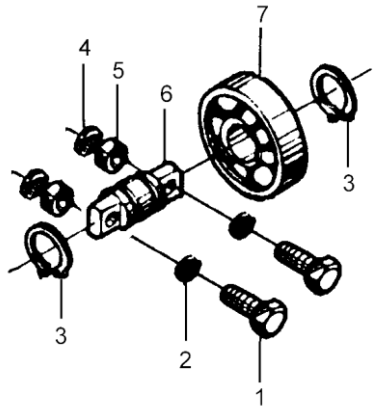


图 I 侧滚轮组  
Fig. I Side rollers

2 级宽视野门架 SIMPLEX      2 级全自由门架 DUPLEX      3 级全自由门架 TRIPLEX

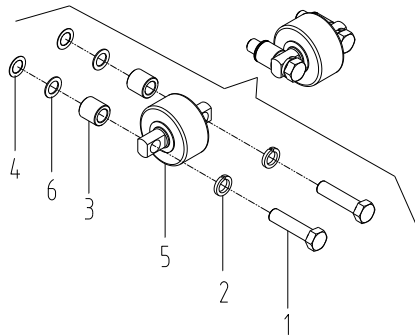
4t-x5t

A1: 40M3.3-101000



A2: 4M3F-202000

A3: R45N450-302000-000



序号 Item	物料码 Part NO.	名称 Description	数量 Qty	备注或适用车型 Remarks Or Serial No.	原物料码 Original Part No.
4	202200270035	调整垫 Adjusting shim	2		40M3.3-201002
5	204000090089	侧滚轮 Side roller	1		C58x80-G00
6	202200270036	调整垫 Adjusting shim	2		40M3.3-201003

图 II 链条座组件  
Fig. II Chain seat assy

2 级全自由门架  
DUPLEX

3 级全自由门架  
TRIPLEX

4t-x5t

序号 Item	物料码 Part NO.	名称 Description	数量 Qty	备注或适用车型 Remarks Or Serial No.	原物料码 Original Part No.
1	300040020107	螺钉 M10×60 Screw M10×60	1	2 级全自由门架 DUPLEX	G000070-010060-00
1	300040020174	螺钉 M10×70 Screw M10×70	1	3 级全自由门架 TRIPLEX	G000070-010070-00
2	300030010001	垫圈 10 Washer 10	2		G000093-000010-00
3	201100310045	套筒 Sleeve	2		2025N4.3-000004
A1	209500100007	链条座总成 Chain seat assy	1	4t-4.5t 包含/INC:4-12	R45U275-010000-000
A1	209500100002	链条座总成 Chain seat assy	1	x5t 包含/INC:4-12	RX50U275-010000-000
4	201500040064	螺钉 Screw	1		CSOW-00-04A-G00
5	201100310004	套筒 Sleeve	1		CSOW-00-03A-G00
6	209500130023	链轮座 Chain wheel seat	1	4t-4.5t	R45U275-011100-000
6	209500130013	链轮座 Chain wheel seat	1	x5t	RX50U275-011100-000
7	209500140007	隔套 Sleeve	4	4t-4.5t	R45U275-010001-000
7	209500140006	隔套 Sleeve	4	x5t	RX50U275-010001-000
8	300040230002	螺钉 M8×12 Screw M8×12	2		G000075-008012-00
9	200100080248	销轴 Pin shaft	2		1QN5-200002B
10	209990000423	前滑轮 Wheel	2		CSOR-00-01

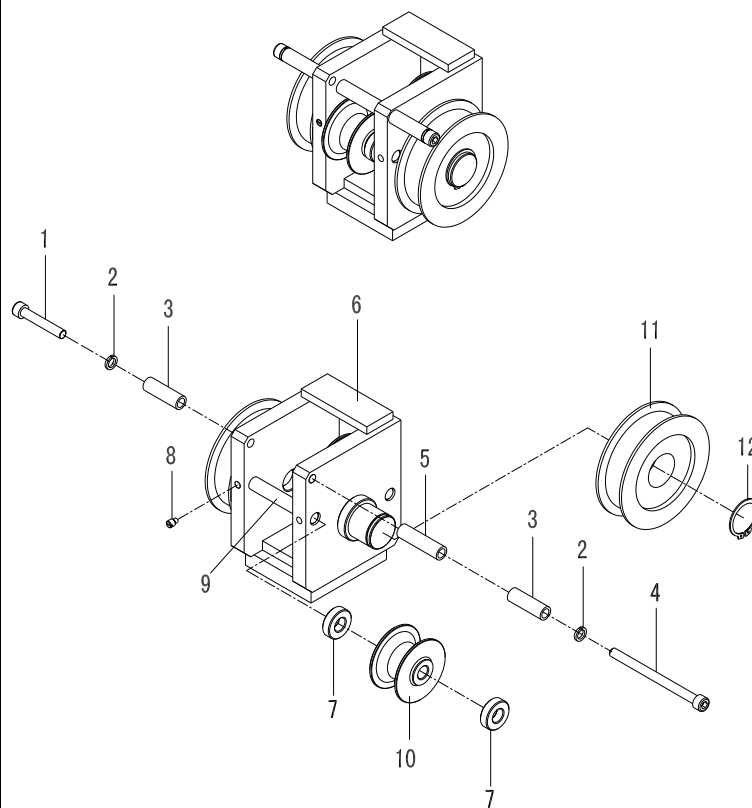
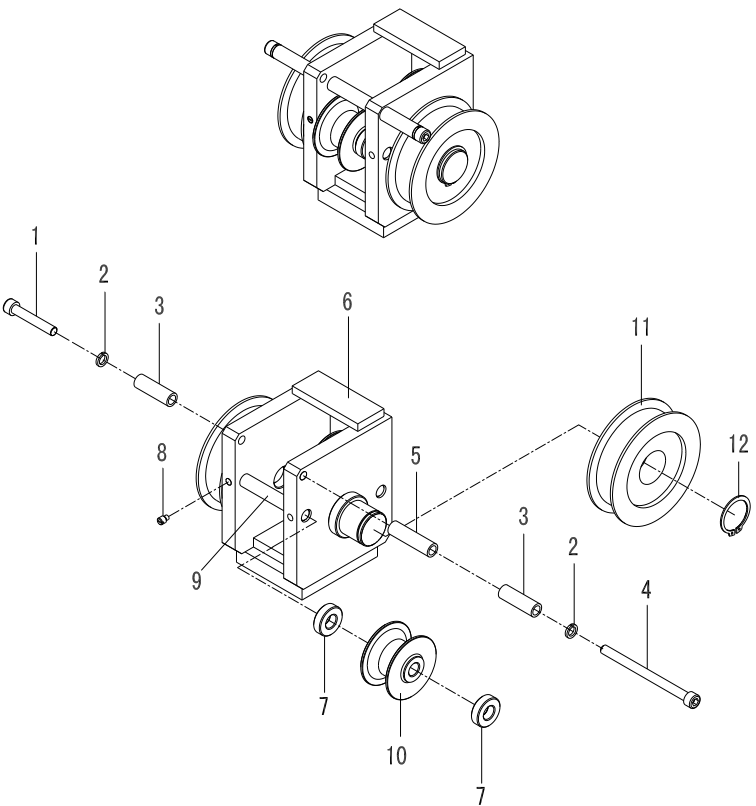


图 II 链条座组件  
Fig. II Chain seat assy

2 级全自由门架  
DUPLEX

3 级全自由门架  
TRIPLEX

4t-x5t



序号 Item	物料码 Part NO.	名称 Description	数量 Qty	备注或适用车型 Remarks Or Serial No.	原物料码 Original Part No.
11	208850010014	链轮 Chain wheel	2	4t-4.5t	780408-G00
11	208850010007	链轮 Chain wheel	2	x5t	CW310-00-G00
12	300060030016	轴用弹性挡圈-A 型 40 Snap ring 50			G0894P1-000040-00

图 III 货叉总成  
Fig. III Fork assy

2 级宽视野门架 SIMPLEX    2 级全自由门架 DUPLEX    3 级全自由门架 TRIPLEX

4t-x5t

序号 Item	物料码 Part NO.	名称 Description	数量 Qty	备注或适用车型 Remarks Or Serial NO.	原物料码 Original Part No.
1	209500240293	货叉总成 H=598 Fork assembly	2	4.0t-4.5t 国产 Chinese	4M3H-010000
1	209500240055	货叉总成 H=477 Fork assembly	2	4.0t 卡斯卡特 CASCADE	N35M300-010000-000
1	209500240125	货叉总成 H=477 Fork assembly	2	4.5t 卡斯卡特 CASCADE	J45M300-010000-000
1	209500240269	货叉总成 H=598 Fork assembly	2	x5t 国产 Chinese	50M3A-310000
1	209500240042	货叉总成 H=598 Fork assembly	2	x5t 卡斯卡特 卡斯卡特 CASCADE	RX50M300-010000-000
1	209500240119	货叉总成 H=477 Fork assembly	2	x5t, 选配 optional 国产 Chinese	J50M300-010000-000

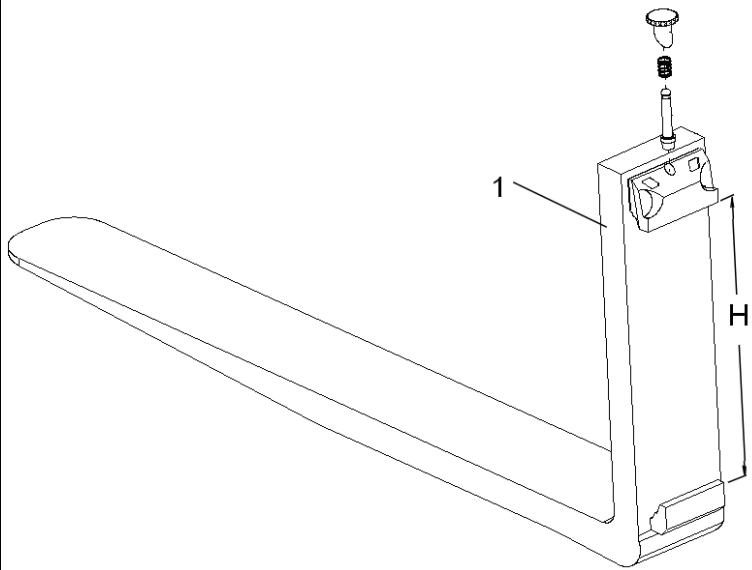
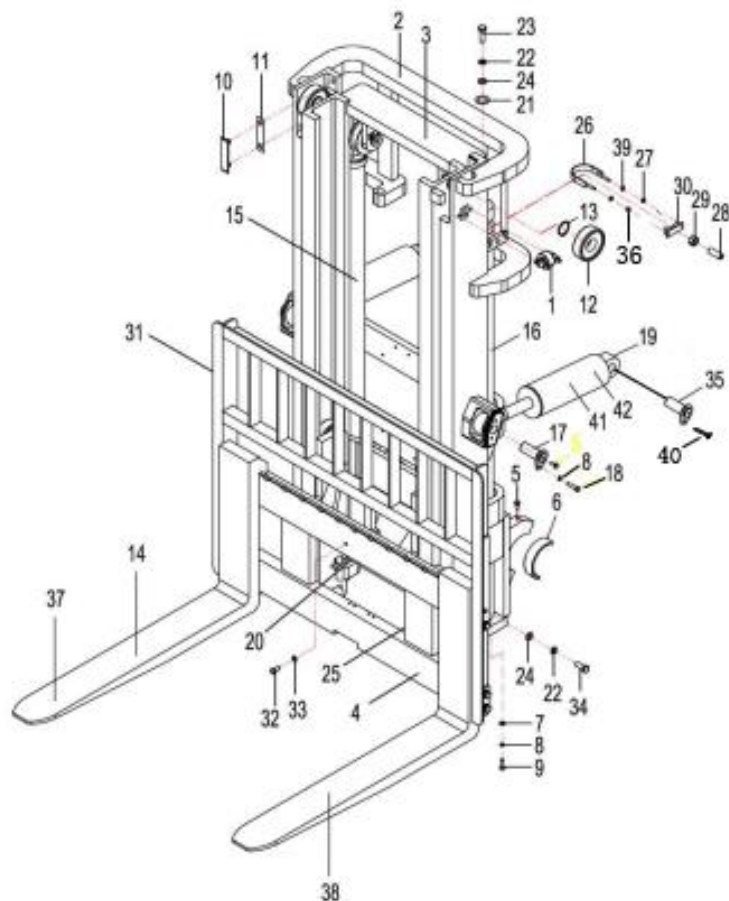


图1 起升组件  
Fig.1 Lifting part

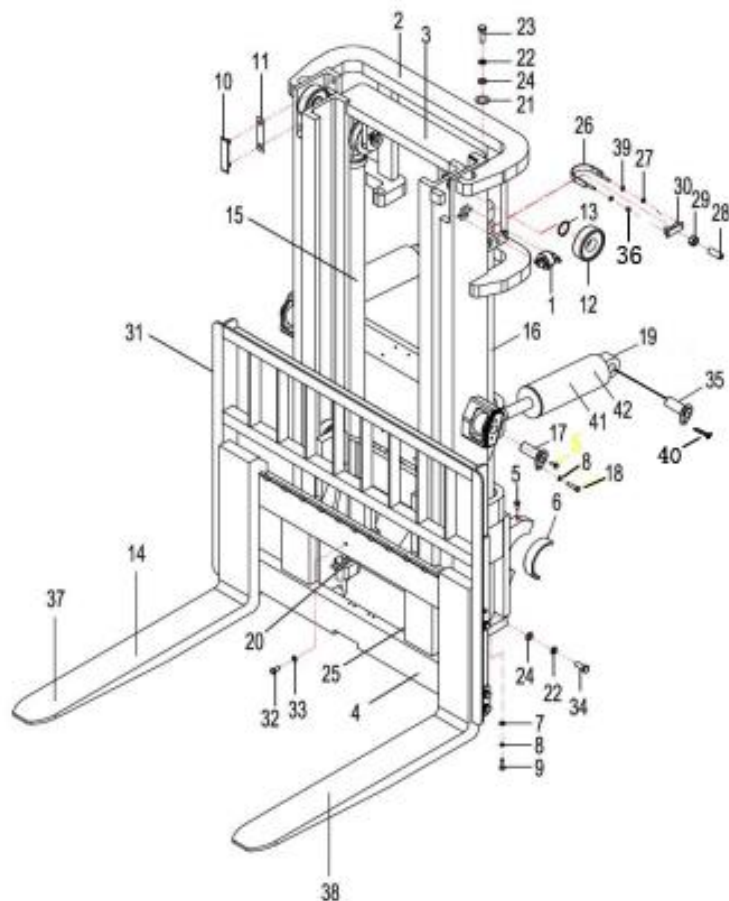
2级宽视野门架 SIMPLEX 4t-x5t



序号 Item	物料码 Part NO.	名称 Description	数量 Qty	备注或适用车型 Remarks Or Serial No.	原物料码 Original Part No.
1	209500070022	侧滚轮组 Side rollers	2	见图 I / See Fig.I	4M3F-202000
2	见图 3 See Fig.3	外门架 Outer mast	1	4t-4.5t	
2	见图 3 See Fig.3	外门架 Outer mast	1	x5t	
3	见图 3 See Fig.3	内门架总成 Inner mast	1	4t-4.5t	
3	见图 3 See Fig.3	内门架总成 Inner mast	1	x5t	
4	209700000060	货叉架总成 Fork carriage assy	1	4t-4.5t 见图 4 / See Fig.4	XR45M300-300000-000
4	209700000059	货叉架总成 Fork carriage assy	1	x5t 见图 4 / See Fig.4	XR50M300-300000-000
4	209700001076	侧移架总成 Sidle carriage assy	1	4t-4.5t 见图 5 / See Fig.5	XR45B300-300000-000
4	209700001278	侧移架总成 Sidle carriage assy	1	x5t 见图 5 / See Fig.5	XRX50B300-300000-000
5	300170040002	油杯 M10x1 Oil cup M10x1	6		G001152-010001-00
6	209500220002	轴瓦 Bearing liner	2		R45M300-000002-000
7	300030040002	垫圈 10 Washer 10	2		G0097P1-000010-00
8	300030010001	垫圈 10 Washer 10	4		G000093-000010-00
9	300040020075	螺钉 M10x30 Screw M10x30	2		G000070-010030-00
10	209500270168	导轨衬垫 Rubber cover	2		R45M300-000006-000

图1 起升组件  
Fig.1 Lifting part

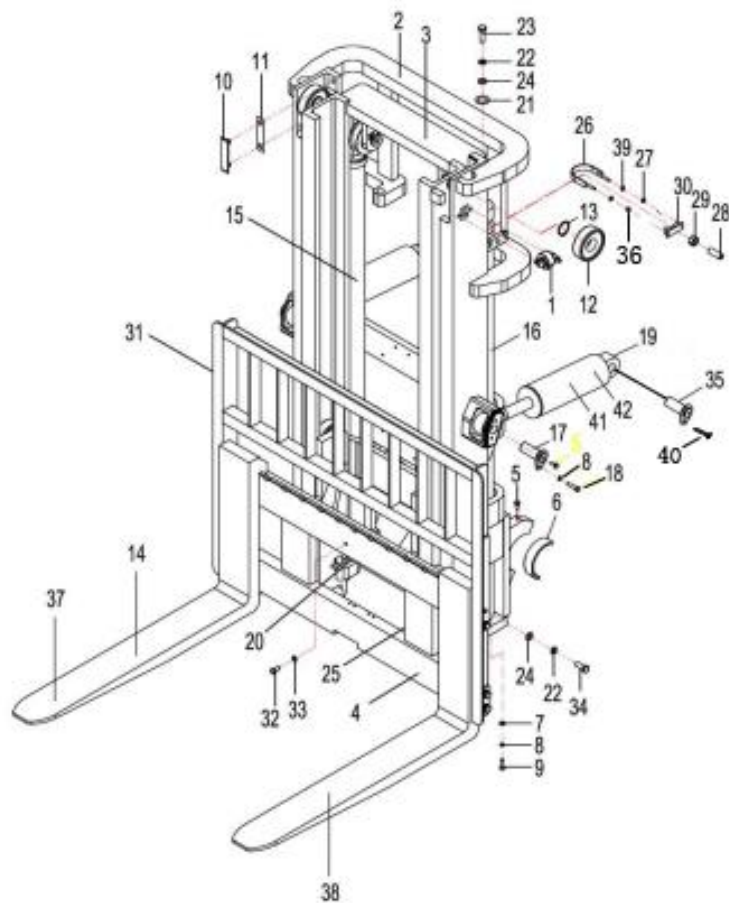
2级宽视野门架 SIMPLEX 4t-x5t



序号 Item	物料码 Part NO.	名称 Description	数量 Qty	备注或适用车型 Remarks Or Serial No.	原物料码 Original Part No.
11	209500270172	调整垫片 Adjusting shim	2		R45M300-000007-000
12	209990000405	起升滚轮 Roller	2		10310D-G00
13	300060030018	轴用弹性挡圈-A型 50 Snap ring 50	2		G0894P1-000050-00
14	见图 III See Fig. III	货叉总成 Fork assembly	2		
15	见图 6 See Fig.6	右升降油缸 Lift cylinder,Right	1	4t-4.5t	
15	见图 6 See Fig.6	右升降油缸 Lift cylinder,Right	1	x5t	
16	见图 6 See Fig.6	左升降油缸 Lift cylinder,Left	1	4t-4.5t	
16	见图 6 See Fig.6	左升降油缸 Lift cylinder,Left	1	x5t	
17	209500270174	销轴 Pin shaft	2		R45M300-001000-000
18	300010040005	螺栓 M10x20 Bolt M10x20	2		G005783-010020-00
19	见图 7 See Fig.7	倾斜油缸 Tilt cylinder	2		
20	见图 2 See Fig.2	链条总成 Chain assy	2	4t-4.5t	
20	见图 2 See Fig.2	链条总成 Chain assy	2	x5t	
21	209500270175	油缸调整垫圈 Adjust gasket	2		R45M300-000003-000
22	300030040005	垫圈 16 Washer 16	10		G0097P1-000016-00

图1 起升组件  
Fig.1 Lifting part

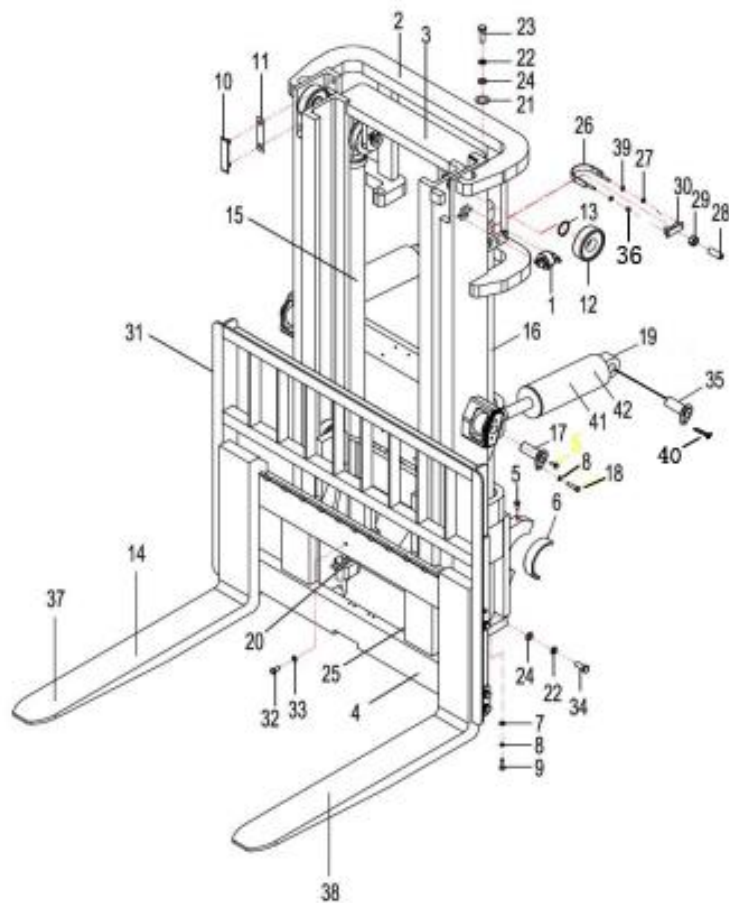
2级宽视野门架 SIMPLEX 4t-x5t



序号 Item	物料码 Part NO.	名称 Description	数量 Qty	备注或适用车型 Remarks Or Serial No.	原物料码 Original Part No.
23	300010050044	螺栓 M16×1.5×55 Bolt M16×1.5×55	2		G005785-016055-01
24	300030010004	垫圈 16 Washer 16	10		G000093-000016-00
25	见图 8 See Fig.8	油路系统 Mast piping	1		
26	209500170021	油缸固定螺栓 U-Bolt	2	4t-4.5t	R45M300-003000-000
26	209500170017	油缸固定螺栓 U-Bolt	2	x5t	RX50M300-001000-000
27	300020010016	螺母 M8 Nut M8	2		G006170-000008-00
28	209500180034	螺钉 Screw	2		R45M300-000004-000
29	300020010009	螺母 M20 Nut M20	2		G006170-000020-00
30	209800000464	油缸支撑座 Cylinder support Seat	2	4t-4.5t	R45M300-005000-000
30	209800000365	油缸支撑座 Cylinder support Seat	2	x5t	RX50M300-004000-000
31	209750000044	挡货架 Load bracket	1	4t-4.5t	R45M300-004000-000
31	209750000029	挡货架 Load bracket	1	x5t	RX50M300-002000-001
32	300010030036	螺栓 M12×25 Bolt M12×25	1		G005782-012035-00
33	300030010002	垫圈 12 Washer 12	1		G000093-000012-00
34	300010040070	螺栓 M16×40 Bolt M16×40	8		G005783-016040-00

图1 起升组件  
Fig.1 Lifting part

2级宽视野门架 SIMPLEX 4t-x5t

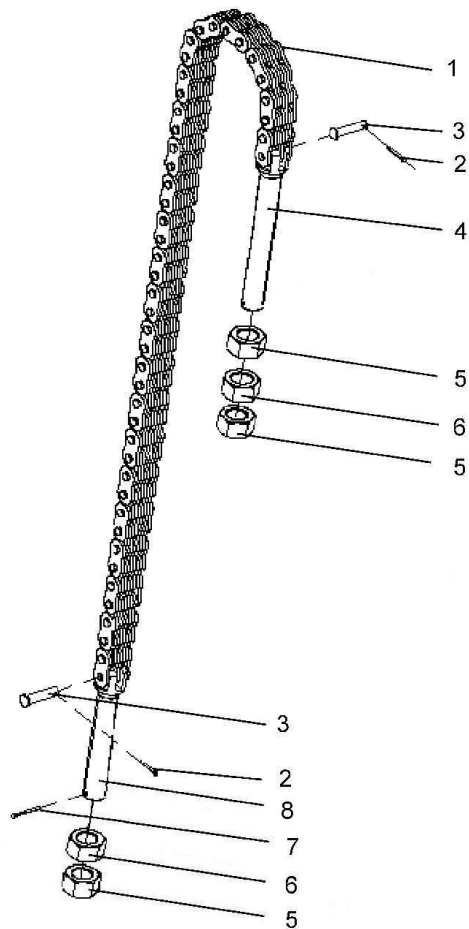


序号 Item	物料码 Part NO.	名称 Description	数量 Qty	备注或适用车型 Remarks Or Serial No.	原物料码 Original Part No.
35	209500270174	销轴 Pin shaft	2		R45M300-001000-000
36	300020420002	螺母 M8 Nut M8	4		G000923-000008-00
37	见图 III See Fig.III	货叉总成 Fork assy	2		
38	见图 III See Fig.III	货叉总成 Fork assy	2		
38	209500240269	货叉总成 Fork assy	2	x5t 见图 III,See Fig. III	50M3A-310000
39	300030040014	垫圈 8 Washer 8	4		G0097P1-000008-00
40	209500270217	螺栓 M10x1.25x20 Bolt M10x1.25x20	2		N30M300-004000-000
41	见图 7 See Fig.7	倾斜油缸 Tilt cylinder	2		
42	见图 7 See Fig.7	倾斜油缸 Tilt cylinder	2		



图2 链条总成  
Fig.2 Chain assy

2 级宽视野门架 SIMPLEX 4t-x5t



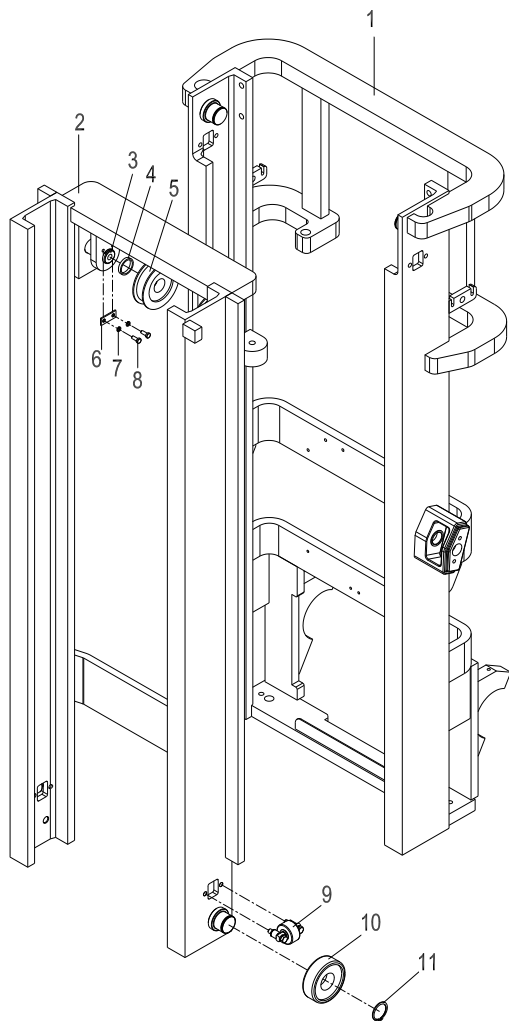
序号 Item	物料码 Part NO.	名称 Description	数量 Qty	备注或适用车型 Remarks Or Serial No.	原物料码 Original Part No.
A1	见选配表 1 See Optional Parts List 1	链条总成 Chain assy	2	4t-4.5t	
A2	见选配表 1 See Optional Parts List 1	链条总成 Chain assy	2	x5t	
1	NO PART NO.	板式链 LH2023 Chain LH2023	1	4t-4.5t	
1	NO PART NO.	板式链 LH1644 Chain LH1644	1	x5t	
2	300050010042	销 4x20 Pin 4x20	2	4t-4.5t	G000091-004020-00
2	300050010038	销 3x20 Pin 3x20	2	x5t	G000091-003020-00
3	NO PART NO.	销轴 Pin shaft	2	4t-4.5t	
3	NO PART NO.	销轴 Pin shaft	2	x5t	
4	NO PART NO.	链条接头 Connector	1	4t-4.5t	
4	NO PART NO.	链条接头 Connector	1	x5t	
5	209500200082	螺母 Nut	3		50M3A-800001
6	209500200083	球螺母 Nut	2		50M3A-800002
7	300050010013	销 2.5x28 Pin 2.5x28	1		G000091-2P5028-00
8	NO PART NO.	链条接头 Connector	1	4t-4.5t	
8	NO PART NO.	链条接头 Connector	1	x5t	

选配表 1 <Optional Parts List 1>

序 号 Item No.	A1, 4t-4.5t		A2, x5t	
起升高度 Lift Height	物料码 Part No.	原物料码 Original Part No.	物料码 Part No.	原物料码 Original Part No.
2500	209500191139	LH-2023061-100	209500191324	LH-1644075-100
2700	204100070708	LH-2023065-100	209500191325	LH-1644079-100
3000	209500190117	LH-2023069-100	209500190050	LH-1644085-100
3300	209500191141	LH-2023073-100	209500191326	LH-1644091-100
3500	209500191142	LH-2023077-100	209500191327	LH-1644095-100
3600	209500191143	LH-2023079-100	209500191328	LH-1644097-100
3800	209500191144	LH-2023081-100	209500191329	LH-1644101-100
4000	209500191146	LH-2023093-100	209500191330	LH-1644113-100
4300	209500191147	LH-2023103-100	209500191331	LH-1644127-100
4500	209500191148	LH-2023109-100	209500190027	LH-1644135-100
4800	209500191149	LH-2023119-100	209500191332	LH-1644149-100
5000	209500191150	LH-2023125-100	209500191333	LH-1644155-100
5500	209500191151	LH-2023143-100	209500191334	LH-1644177-100
6000	209500191152	LH-2023159-100	209500191335	LH-1644197-100

图3 门架  
Fig.3 Mast

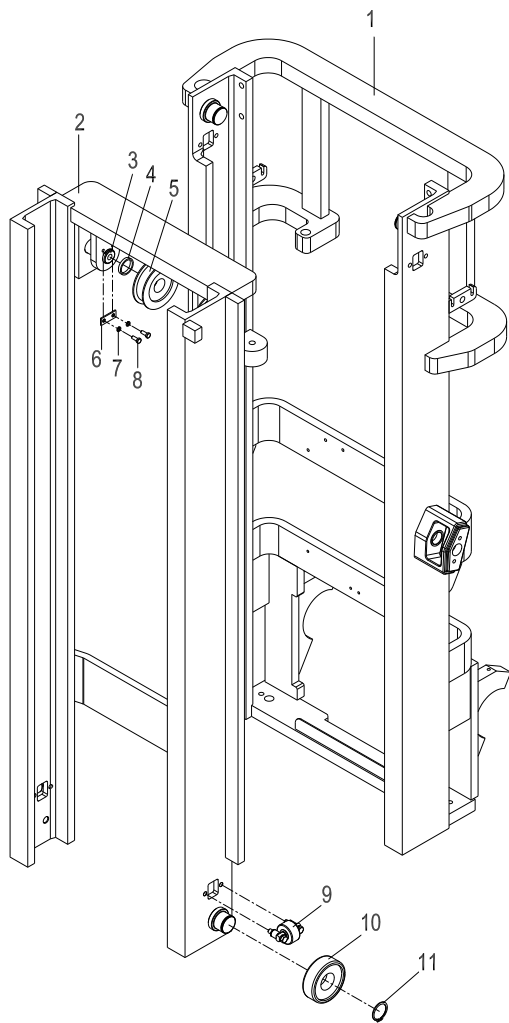
2级宽视野门架 SIMPLEX 4t-x5t



序号 Item	物料码 Part NO.	名称 Description	数量 Qty	备注或适用车型 Remarks Or Serial No.	原物料码 Original Part No.
1	见选配表 2 See Optional Parts List 2	外门架 Outer mast	1	4t-4.5t	
1	见选配表 2 See Optional Parts List 2	外门架 Outer mast	1	x5t	
A1	见选配表 2 See Optional Parts List 2	内门架总成 Inner mast	1	4t-4.5t 包含/INC: 2-11	
A2	见选配表 2 See Optional Parts List 2	内门架总成 Inner mast	1	x5t 包含/INC: 2-11	
2	见选配表 2 See Optional Parts List 2	内门架体 Inner mast	1	4t-4.5t	
2	见选配表 2 See Optional Parts List 2	内门架体 Inner mast	1	x5t	
3	208850010018	链轮轴 Chain wheel ,shaft	2	4t-4.5t	40M3.3-200002
3	209650090006	链轮轴 Chain wheel,shaft	2	x5t	H50M300-200002-000
4	209650100278	垫 Washer	2	4t-4.5t	4M3F-200001
4	209650090005	垫 Washer	2	x5t	H50M300-200001-000
5	208850010014	链轮 Chain wheel	2	4t-4.5t	780408-G00
5	208850010007	链轮 Chain wheel	2	x5t	CW310-00-G00
6	209550120085	止动板 Check plate	2		50M3A-100002
7	300030010015	垫圈 8 Washer 8	4		G000093-000008-00
8	300010020027	螺栓 M8×20 Bolt M8×20	4		G005781-008020-00

图3 门架  
Fig.3 Mast

2级宽视野门架 SIMPLEX 4t-x5t



序号 Item	物料码 Part NO.	名称 Description	数量 Qty	备注或适用车型 Remarks Or Serial No.	原物料码 Original Part No.
9	209500070022	侧滚轮组 Side rollers	2	见图 I / See Fig.I	4M3F-202000
10	209990000405	起升滚轮 Roller	2		10310D-G00
11	300060030018	轴用弹性挡圈-A型 50 Snap ring 50	2		G0894P1-000050-00
	300010050044	螺栓 M16x1.5x55 Bolt M16x1.5x55	2		G005785-016055-01

选配表 2 <Optional Parts List 2> (4t-4.5t)

	外门架 Outer mast		内门架体 Inner mast	
序号 Item No.	1		2	
起升高度 Lift Height	物料码 Part No.	原物料码 Original Part No.	物料码 Part No.	原物料码 Original Part No.
2500	209550000649	XR45M250-100000-000	209650011021	XR45M250-201000-000
2700	209550000650	XR45M270-100000-000	209650011022	XR45M270-201000-000
3000	209550010027	XR45M300-100000-000	209650010026	XR45M300-201000-000
3300	209550000651	XR45M330-100000-000	209650011023	XR45M330-201000-000
3500	209550000652	XR45M350-100000-000	209650011024	XR45M350-201000-000
3600	209550000653	XR45M360-100000-000	209650011025	XR45M360-201000-000
3800	209550000648	XR45M380-100000-000	209650011026	XR45M380-201000-000
4000	209550000655	XR45M400-100000-000	209650011027	XR45M400-201000-000
4300	209550000656	XR45M430-100000-000	209650011028	XR45M430-201000-000
4500	209550000657	XR45M450-100000-000	209650011029	XR45M450-201000-000
4800	209550000659	XR45M480-100000-000	209650011030	XR45M480-201000-000
5000	209550000660	XR45M500-100000-000	209650011031	XR45M500-201000-000
5500	209550000661	XR45M550-100000-000	209650011032	XR45M550-201000-000
6000	209550000662	XR45M600-100000-000	209650011033	XR45M600-201000-000

选配表 2 <Optional Parts List 2> (x5t)

	外门架 Outer mast		内门架体 Inner mast	
序号 Item No.	1		2	
起升高度 Lift Height	物料码 Part No.	原物料码 Original Part No.	物料码 Part No.	原物料码 Original Part No.
2500	209550000770	XR50M250-100000-000	209650011048	XR50M250-201000-000
2700	209550000771	XR50M270-100000-000	209650011049	XR50M270-201000-000
3000	209550000021	XR50M300-100000-000	209650010026	XR45M300-201000-000
3300	209550000772	XR50M330-100000-000	209650011050	XR50M330-201000-000
3500	209550000773	XR50M350-100000-000	209650011051	XR50M350-201000-000
3600	209550000774	XR50M360-100000-000	209650011052	XR50M360-201000-000
3800	209550000775	XR50M380-100000-000	209650011053	XR50M380-201000-000
4000	209550000776	XR50M400-100000-000	209650011054	XR50M400-201000-000
4300	209550000777	XR50M430-100000-000	209650011055	XR50M430-201000-000
4500	209550000778	XR50M450-100000-000	209650011056	XR50M450-201000-000
4800	209550000779	XR50M480-100000-000	209650011057	XR50M480-201000-000
5000	209550000780	XR50M500-100000-000	209650011058	XR50M500-201000-000
5500	209550000781	XR50M550-100000-000	209650011059	XR50M550-201000-000
6000	209550000782	XR50M600-100000-000	209650011060	XR50M600-201000-000

选配表 2 <Optional Parts List 2>

	4t-4.5t 内门架总成 Inner mast		x5t 内门架总成 Inner mast	
序号 Item No.	A1		A2	
起升高度 Lift Height	物料码 Part No.	原物料码 Original Part No.	物料码 Part No.	原物料码 Original Part No.
2500	209650000617	XR45M250-200000-000	209650000770	XRX50M250-200000-000
2700	209650000618	XR45M270-200000-000	209650000771	XRX50M270-200000-000
3000	209650000026	XR45M300-200000-000	209650000025	XRX50M300-200000-000
3300	209650000619	XR45M330-200000-000	209650000772	XRX50M330-200000-000
3500	209650000620	XR45M350-200000-000	209650000773	XRX50M350-200000-000
3600	209650000621	XR45M360-200000-000	209650000774	XRX50M360-200000-000
3800	209650000616	XR45M380-200000-000	209650000775	XRX50M380-200000-000
4000	209650000623	XR45M400-200000-000	209650000776	XRX50M400-200000-000
4300	209650000624	XR45M430-200000-000	209650000777	XRX50M430-200000-000
4500	209650000625	XR45M450-200000-000	209650000778	XRX50M450-200000-000
4800	209650000627	XR45M480-200000-000	209650000779	XRX50M480-200000-000
5000	209650000628	XR45M500-200000-000	209650000780	XRX50M500-200000-000
5500	209650000629	XR45M550-200000-000	209650000781	XRX50M550-200000-000
6000	209650000630	XR45M600-200000-000	209650000782	XRX50M600-200000-000

图4 货叉架总成  
Fig.4 Fork carriage assy

2级宽视野门架 SIMPLEX 4t-x5t

序号 Item	物料码 Part NO.	名称 Description	数量 Qty	备注或适用车型 Remarks Or Serial No.	原物料码 Original Part No.
A1	20970000273	货叉架总成 Fork carriage assy	1	4t-4.5t,	R45M300-300000-001
A2	20970000200	货叉架总成 Fork carriage assy	1	x5t,	RX50M300-300000-100
1	209700010231	货叉架 Fork carriage	1	4t-4.5t,	R45M300-301000-001
1	209700010170	货叉架体 Fork carriage	1	x5t,	RX50M300-301000-100
2	209990000405	起升滚轮 Roller	6		10310D-G00
3	300060030018	轴用弹性挡圈-A型 50 Snap ring 50	6		G0894P1-000050-00
4	209500070022	侧滚轮组 Side rollers	4	见图 I / See Fig.I	4M3F-202000

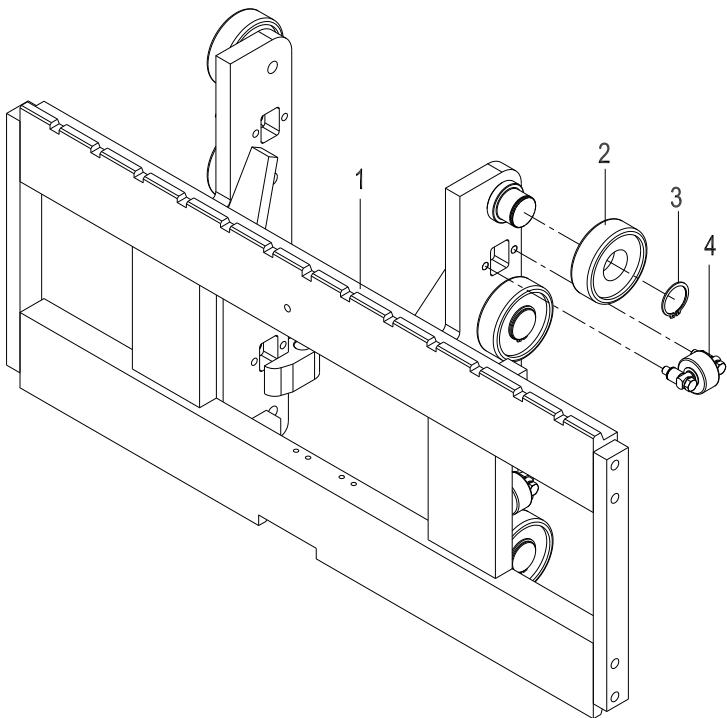




图 5 侧移架总成  
Fig.5 Sidle carriage assy

2 级宽视野门架  
SIMPLEX

2 级全自由门架  
DUPLEX

3 级全自由门架  
TRIPLEX

4t-x5t

序号 Item	物料码 Part NO.	名称 Description	数量 Qty	备注或适用车型 Remarks Or Serial NO.	原物料码 Original Part No.
A1	209700001076	侧移架总成 Sidle carriage assy	1	4-4.5t 2级宽视野门架/SIMPLEX	XR45B300-300000-000
A2	209700001278	侧移架总成 Sidle carriage assy	1	x5t 2级宽视野门架/SIMPLEX	XR50B300-300000-000
1	204210010332	叉架体 Fork carriage	1	4-4.5t 2级宽视野门架/SIMPLEX	XR45B300-301000-000
1	209700011338	叉架体 Fork carriage	1	x5t 2级宽视野门架/SIMPLEX	XR50B300-301000-000
A3	209700001279	侧移架总成 Sidle carriage assy	1	4-4.5t 2级全自由门架/DUPLEX	XR45C275-300000-000
A4	209700001280	侧移架总成 Sidle carriage assy	1	x5t 2级全自由门架/DUPLEX	XR50C275-300000-000
1	209700011339	叉架体 Fork carriage	1	4-4.5t 2级全自由门架/DUPLEX	XR45C275-301000-000
1	209700011340	叉架体 Fork carriage	1	x5t 2级全自由门架/DUPLEX	XR50C275-301000-000
A5	209700001282	侧移架总成 Sidle carriage assy	1	4-4.5t 3级全自由门架/TRIPLEX	XR45V450-300000-000
A6	209700001283	侧移架总成 Sidle carriage assy	1	x5t 3级全自由门架/TRIPLEX	XR50V450-300000-000
1	209700011341	叉架体 Fork carriage	1	4-4.5t 3级全自由门架/TRIPLEX	XR45V450-301000-000

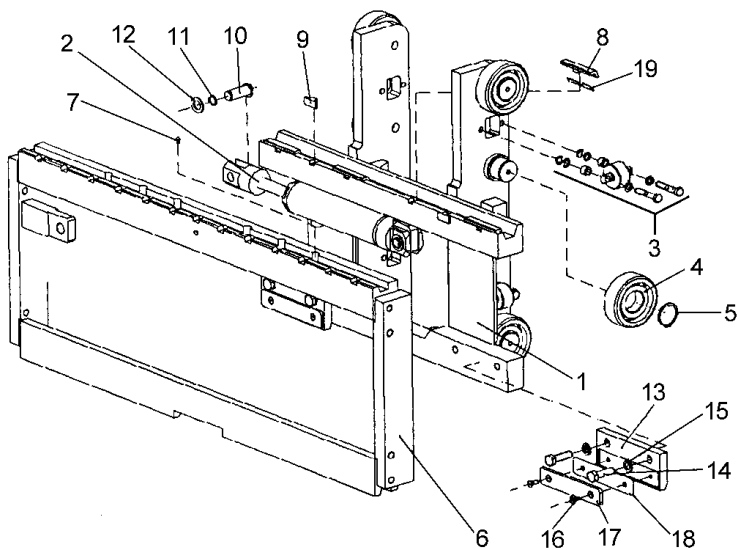


图 5 侧移架总成  
Fig.5 Side carriage assy

2 级宽视野门架  
SIMPLEX

2 级全自由门架  
DUPLEX

3 级全自由门架  
TRIPLEX

4t-x5t

序号 Item	物料码 Part NO.	名称 Description	数量 Qty	备注或适用车型 Remarks Or Serial NO.	原物料码 Original Part No.
1	209700011342	叉架体 Fork carriage	1	x5t 3 级全自由门架/ TRIPLEX	XR50V450-301000-000
2	209800000423	侧移油缸 Side cylinder	1	见图 20 / See Fig.20	R45V450-303000-000
3	209500070022	侧滚轮组 Side rollers	4	见图 I / See Fig. I	4M3F-202000
4	209990000405	起升滚轮 Roller	6		10310D-G00
5	300060030018	轴用弹性挡圈-A 型 50 Snap ring 50	6		G0894P1-000050-00
6	209700090031	侧移货叉架 Side shifting carriage	1	4-4.5t	R45V450-302000-001
6	209700090013	侧移货叉架 Side shifting carriage	1	x5t	RX50V450-302000-101
7	300170040003	油杯 M6 Oil cup M6	6		G001152-006000-00
8	209700130048	塞铁 Plug	5		S16V450-300001-000
9	209700150003	挡块 Block	2		1.4QS1-000006
10	209700130059	轴 Shaft	2		R45V450-300005-000
11	300060030027	轴用弹性挡圈-A 型 22 snap ring 22	2		G0894P1-000022-00
12	209800090200	垫圈 22 Washer 22	2		R45V450-300003-000
13	209700130056	挂钩板 Suspension hook	2		R45V450-300006-000
14	300010060076	螺栓 M16×1.5×50 Bolt M16×1.5×50	4		G005786-016050-01

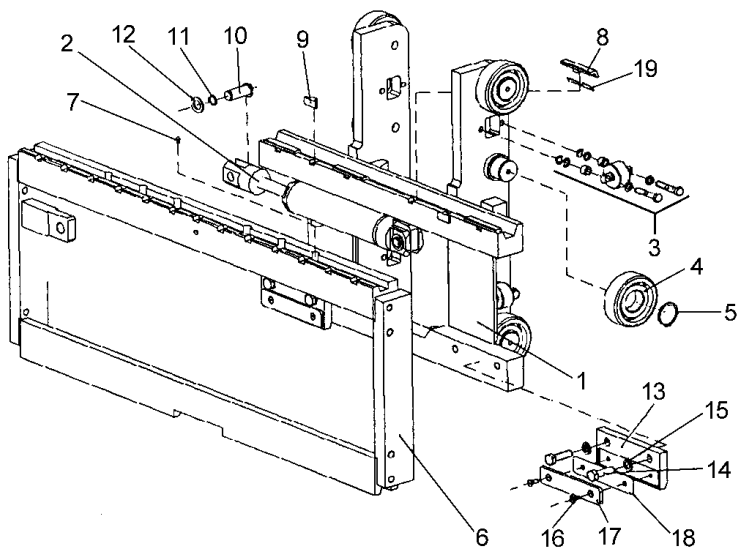


图 5 侧移架总成  
Fig.5 Side carriage assy

2 级宽视野门架  
SIMPLEX

2 级全自由门架  
DUPLEX

3 级全自由门架  
TRIPLEX

4t-x5t

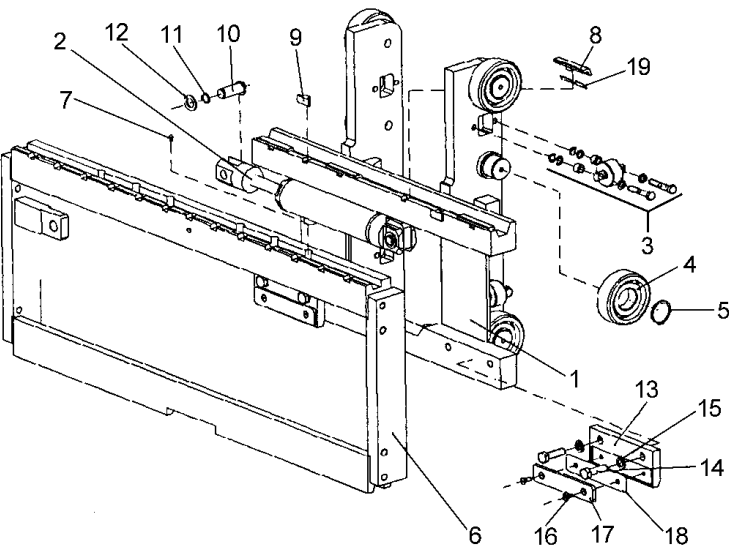
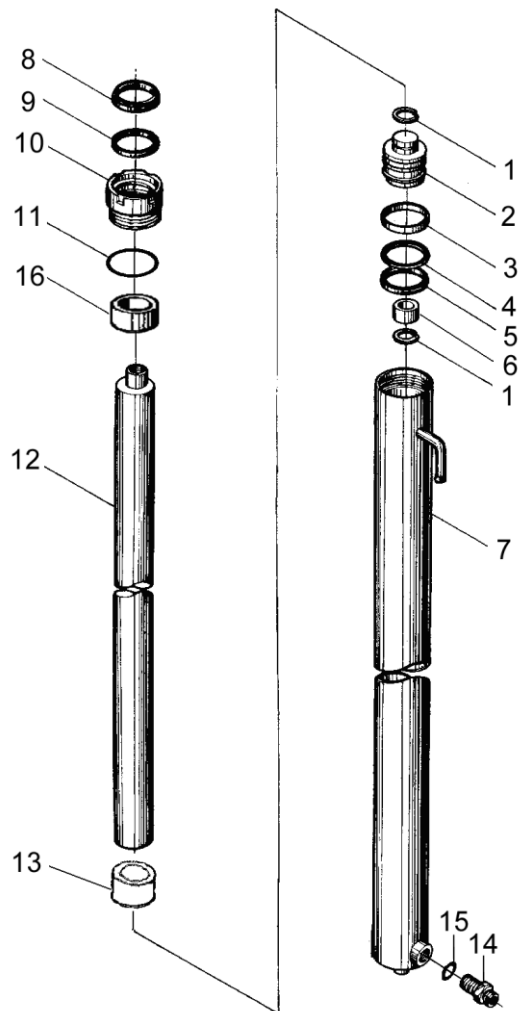
图 5 侧移架总成 Fig.5 Side carriage assy	序号 Item	物料码 Part NO.	名称 Description	数量 Qty	备注或适用车型 Remarks Or Serial NO.	原物料码 Original Part No.	
	15	300030010004	垫圈 16 Washer 16	4		G000093-000016-00	
	16	300040180016	螺钉 M8×16 Bolt M8×16	4		G000068-008016-00	
	17	209700130058	下滑块 Under slide block	2		R45V450-300002-000	
	18	209700130057	调整垫 Adjusting shim	2		R45V450-300008-000	
	19	209700130050	调整垫 Adjusting shim	2		S16V450-300009-000	

图6 左右升降油缸  
Fig.6 Lift cylinder, right & left

2级宽视野门架 SIMPLEX 4t-x5t

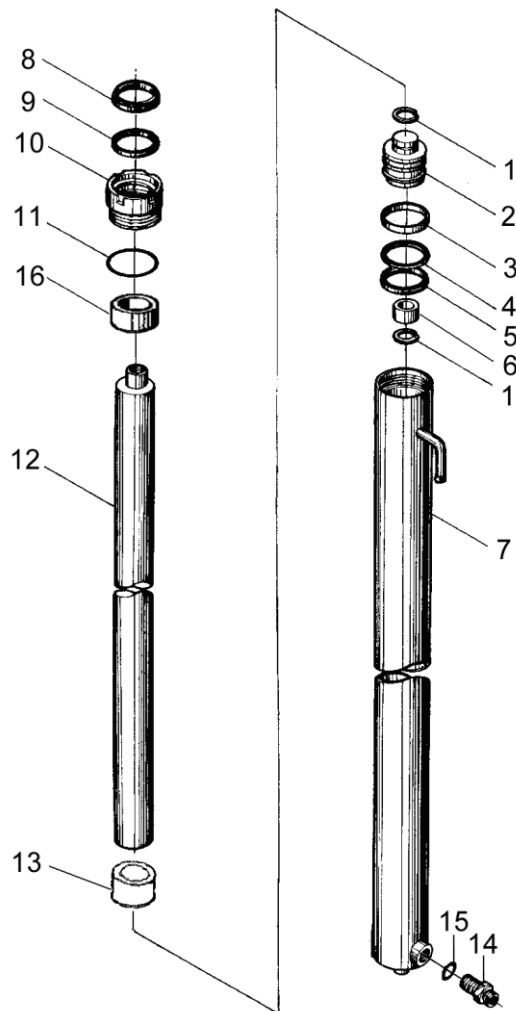


序号 Item	物料码 Part NO.	名称 Description	数量 Qty	备注或适用车型 Remarks Or Serial No.	原物料码 Original Part No.
A1	见选配表 3 See Optional Parts List 3	右升降油缸 Lift cylinder,Right	1	4t-4.5t INC:1-13,16	
A1	见选配表 3 See Optional Parts List 3	右升降油缸 Lift cylinder,Right	1	x5t, INC:1-13,16	
A2	见选配表 3 See Optional Parts List 3	左升降油缸 Lift cylinder,Left	1	4t-4.5t INC:1-16	
A2	见选配表 3 See Optional Parts List 3	左升降油缸 Lift cylinder,Left	1	x5t INC:1-16	
1	300060050005	孔用钢丝挡圈 30 Snap shim 30	4		G0895P1-000030-00
2	209800050051	活塞 Piston	2	4t-4.5t	R45M300-500003-W00
2	209800050032	活塞 Piston	2	x5t	RX50M300-500003-W00
3	209800090231	支承圈 Support ring 65×60×25	2	4t-4.5t	R45M300-500004-W00
3	209800090170	支承圈 Support ring 70×65×25	2	x5t	RX50M300-500004-W00
4	209800090226	保护圈 65×55×3 Ring 65×55×3	2	4t-4.5t	R45M300-500005-W00
4	209800090168	保护圈 70×60×3 Ring 70×60×3	2	x5t	RX50M300-500005-W00
5	209990000026	OSI 密封圈 D65 OSI-seal ring D65	2	4t-4.5t	FU0807L0-02-G00
5	209990000162	OSI 密封圈 D70 OSI-seal ring D70	2	x5t	FU0846L0-G00
6	209800080036	隔套 Bushing	2		N35M300-400006-W00

注：序号 1,2,12, 组装后为不可拆分整体, 用户订购时应订购整个组合件。  
Notice: No. 1,2,12, after the assy, it's a whole, also, when user order.

图6 左右升降油缸  
Fig.6 Lift cylinder, right & left

2级宽视野门架 SIMPLEX 4t-x5t

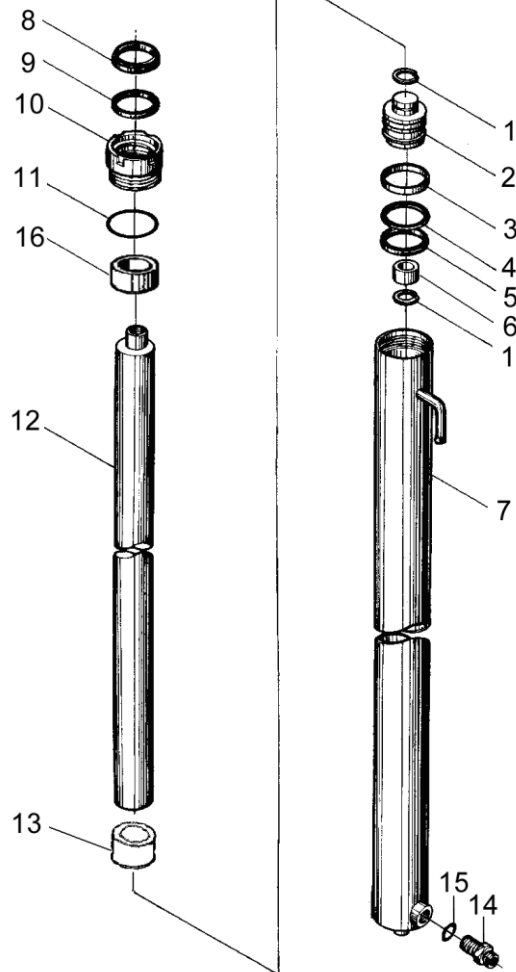


序号 Item	物料码 Part NO.	名称 Description	数量 Qty	备注或适用车型 Remarks Or Serial No.	原物料码 Original Part No.
7	见选配表 3 See Optional Parts List 3	右缸体 Cylinder body, Right	1	4t-4.5t	
7	见选配表 3 See Optional Parts List 3	右缸体 Cylinder body, Right	1	x5t	
7	见选配表 3 See Optional Parts List 3	左缸体 Cylinder body, Left	1	4t-4.5t	
7	见选配表 3 See Optional Parts List 3	左缸体 Cylinder body, Left	1	x5t	
8	204100070378	DKI 防尘圈 d50 DKI-dustproof ring	2		FD2831A0-G00
9	204100070391	ISI 密封圈 d50 ISI-seal ring d50	2		FU0619K0-G00
10	209800030037	导向套 Guide sleeve	2	4t-4.5t	R45M300-500002-W00
10	209800030024	导向套 Guide sleeve	2	x5t	RX50M300-500002-W00
11	300130010131	O 形密封圈 70x3.1 O-ring 70x3.1	2	4t-4.5t	G001235-007003P1-00
11	300130010122	O 形密封圈 75x3.1 O-ring 75x3.1	2	x5t	G001235-007503P1-00
12	见选配表 3 See Optional Parts List 3	活塞杆 Piston rod	2		
13	见选配表 3 See Optional Parts List 3	隔套 Sheath	2		
14	209800080022	油嘴组件 Nozzle valve assy	1	4t-4.5t 左升降油缸 Lift cylinder,Left	R45M300-402000-W00
14	209800080019	油嘴组件 Nozzle valve assy	1	x5t 左升降油缸 Lift cylinder,Left	RX50M300-502000-W00

注：序号 1,2,12, 组装后为不可拆分整体, 用户订购时应订购整个组合件。  
Notice: No. 1,2,12, after the assy, it's a whole, also, when user order.

图 6 左右升降油缸  
 Fig.6 Lift cylinder, right & left

2 级宽视野门架 SIMPLEX 4t-x5t



序号 Item	物料码 Part NO.	名称 Description	数量 Qty	备注或适用车型 Remarks Or Serial No.	原物料码 Original Part No.
15	206300020009	O 形密封圈 P18 O-ring P18	1	左升降油缸 Lift cylinder,Left	JISB2401-P18-G00
16	205100040032	复合衬套 5050 Combination bush	2		SF-1-5050-G00
K1	820020000024	左右缸修理包 Lift cylinder- kit	1	INC:5,8,9,11,15 For (4t-4.5t)	R45M300-4/5-001-Kit
K2	820020000025	左右缸修理包 Lift cylinder- kit	1	INC:5,8,9,11,15 For X5t	RX50M300-4/5-100-Kit

注：序号 1,2,12, 组装后为不可拆分整体, 用户订购时应订购整个组合件。  
 Notice: No. 1,2,12, after the assy, it's a whole, also, when user order.

选配表 3 <Optional Parts List 3> (4t-4.5t)

	右升降油缸 Lift cylinder,Right		左升降油缸 Lift cylinder,Left	
序号 Item No.	A1		A2	
起升高度 Lift Height	物料码 Part No.	原物料码 Original Part No.	物料码 Part No.	原物料码 Original Part No.
2500	209800002411	XR45M250-400000-000	209800002426	XR45M250-500000-000
2700	209800002412	XR45M270-400000-000	209800002427	XR45M270-500000-000
3000	209800000154	XR45M300-400000-000	209800000155	XR45M300-500000-000
3300	209800002413	XR45M330-400000-000	209800002428	XR45M330-500000-000
3500	209800002414	XR45M350-400000-000	209800002429	XR45M350-500000-000
3600	209800002415	XR45M360-400000-000	209800002430	XR45M360-500000-000
3800	209800002410	XR45M380-400000-000	209800002425	XR45M380-500000-000
4000	209800002417	XR45M400-400000-000	209800002432	XR45M400-500000-000
4300	209800002418	XR45M430-400000-000	209800002433	XR45M430-500000-000
4500	209800002419	XR45M450-400000-000	209800002434	XR45M450-500000-000
4800	209800002421	XR45M480-400000-000	209800002436	XR45M480-500000-000
5000	209800002422	XR45M500-400000-000	209800002437	XR45M500-500000-000
5500	209800002423	XR45M550-400000-000	209800002438	XR45M550-500000-000
6000	209800002424	XR45M600-400000-000	209800002439	XR45M600-500000-000

选配表 3 <Optional Parts List 3> (4t-4.5t)

	右缸体 Cylinder body, Right	左缸体 Cylinder body, Lift	活塞杆 Piston rod	隔套 Sheath
序 号 Item No.	7	7	12	13
起升高度 Lift Height	物料码 Part No.	物料码 Part No.	物料码 Part No.	物料码 Part No.
2500	209800012067	209800012082	209800021359	Without part 16
2700	209800012068	209800012083	209800021360	Without part 16
3000	209800010084	209800010085	209800020237	Without part 16
3300	209800012069	209800012084	209800021361	Without part 16
3500	209800012070	209800012085	209800021362	Without part 16
3600	209800012071	209800012086	209800021363	Without part 16
3800	209800012066	209800012081	209800021358	Without part 16
4000	209800012073	209800012088	209800021365	209800021365
4300	209800012074	209800012089	209800021366	209800021366
4500	209800012075	209800012090	209800021368	209800021368
4800	209800012077	209800012092	209800021370	209800021370
5000	209800012078	209800012093	209800021371	209800021371
5500	209800012079	209800012094	209800021372	209800021372
6000	209800012080	209800012095	209800021373	209800021373



选配表 3 <Optional Parts List 3> (4t-4.5t)

	右缸体 Cylinder body, Right	左缸体 Cylinder body, Lift	活塞杆 Piston rod	隔套 Sheath
序号 Item No.	7	7	12	13
起升高度 Lift Height	原物料码 Original Part No.	原物料码 Original Part No.	原物料码 Original Part No.	原物料码 Original Part No.
2500	XR45M250-401000-W00	XR45M250-501000-W00	XR45M250-400001-W00	Without part 16
2700	XR45M270-401000-W00	XR45M270-501000-W00	XR45M270-400001-W00	Without part 16
3000	XR45M300-401000-W00	XR45M300-501000-W00	R45M300-500001-W00	Without part 16
3300	XR45M330-401000-W00	XR45M330-501000-W00	XR45M330-400001-W00	Without part 16
3500	XR45M350-401000-W00	XR45M350-501000-W00	XR45M350-400001-W00	Without part 16
3600	XR45M360-401000-W00	XR45M360-501000-W00	XR45M360-400001-W00	Without part 16
3800	XR45M380-401000-W00	XR45M380-501000-W00	XR45M380-400001-W00	Without part 16
4000	XR45M400-401000-W00	XR45M400-501000-W00	XR45M400-400001-W00	XR45M400-400001-W00
4300	XR45M430-401000-W00	XR45M430-501000-W00	XR45M430-400001-W00	XR45M430-400001-W00
4500	XR45M450-401000-W00	XR45M450-501000-W00	XR45M450-400001-W00	XR45M450-400001-W00
4800	XR45M480-401000-W00	XR45M480-501000-W00	XR45M480-400001-W00	XR45M480-400001-W00
5000	XR45M500-401000-W00	XR45M500-501000-W00	XR45M500-400001-W00	XR45M500-400001-W00
5500	XR45M550-401000-W00	XR45M550-501000-W00	XR45M550-400001-W00	XR45M550-400001-W00
6000	XR45M600-401000-W00	XR45M600-501000-W00	XR45M600-400001-W00	XR45M600-400001-W00

选配表 3 <Optional Parts List 3> (x5t)

序号 Item No.	A1	A2
起升高度 Lift Height	物料码 Part No.	物料码 Part No.
2500	209800002821	209800002834
2700	209800002822	209800002835
3000	209800000150	209800000151
3300	209800002823	209800002836
3500	209800002824	209800002837
3600	209800002825	209800002838
3800	209800002826	209800002839
4000	209800002827	209800002840
4300	209800002828	209800002841
4500	209800002829	209800002842
4800	209800002830	209800002843
5000	209800002831	209800002844
5500	209800002832	209800002845
6000	209800002833	209800002846

选配表 3 <Optional Parts List 3> (x5t)

序号 Item No.	A1		A2	
起升高度 Lift Height	物料码 Part No.	原物料码 Original Part No.	物料码 Part No.	原物料码 Original Part No.
2500	209800002821	XR50M250-400000-000	209800002834	XR50M250-500000-000
2700	209800002822	XR50M270-400000-000	209800002835	XR50M270-500000-000
3000	209800000150	XR50M300-400000-000	209800000151	XR50M300-500000-000
3300	209800002823	XR50M330-400000-000	209800002836	XR50M330-500000-000
3500	209800002824	XR50M350-400000-000	209800002837	XR50M350-500000-000
3600	209800002825	XR50M360-400000-000	209800002838	XR50M360-500000-000
3800	209800002826	XR50M380-400000-000	209800002839	XR50M380-500000-000
4000	209800002827	XR50M400-400000-000	209800002840	XR50M400-500000-000
4300	209800002828	XR50M430-400000-000	209800002841	XR50M430-500000-000
4500	209800002829	XR50M450-400000-000	209800002842	XR50M450-500000-000
4800	209800002830	XR50M480-400000-000	209800002843	XR50M480-500000-000
5000	209800002831	XR50M500-400000-000	209800002844	XR50M500-500000-000
5500	209800002832	XR50M550-400000-000	209800002845	XR50M550-500000-000
6000	209800002833	XR50M600-400000-000	209800002846	XR50M600-500000-000

选配表 3 <Optional Parts List 3> (x5t)

	右缸体 Cylinder body, Right	左缸体 Cylinder body, Lift	活塞杆 Piston rod	隔套 Sheath
序 号 Item No.	7	7	12	13
起升高度 Lift Height	物料码 Part No.	物料码 Part No.	物料码 Part No.	物料码 Part No.
2500	209800012488	209800012501	209800021639	Without part 16
2700	209800012489	209800012502	209800021640	Without part 16
3000	209800010081	209800010082	209800020237	Without part 16
3300	209800012490	209800012503	209800021641	Without part 16
3500	209800012491	209800012504	209800021642	Without part 16
3600	209800012492	209800012505	209800021643	Without part 16
3800	209800012493	209800012506	209800021644	Without part 16
4000	209800012494	209800012507	209800021645	209800090950
4300	209800012495	209800012508	209800021646	209800090951
4500	209800012496	209800012509	209800021647	209800090952
4800	209800012497	209800012510	209800021648	209800090954
5000	209800012498	209800012511	209800021649	209800090955
5500	209800012499	209800012512	209800021650	209800090956
6000	209800012500	209800012513	209800021651	209800090957

选配表 3 <Optional Parts List 3> (x5t)

	右缸体 Cylinder body, Right	左缸体 Cylinder body, Lift	活塞杆 Piston rod	隔套 Sheath
序号 Item No.	7	7	12	13
起升高度 Lift Height	原物料码 Original Part No.	原物料码 Original Part No.	原物料码 Original Part No.	原物料码 Original Part No.
2500	XR50M250-401000-W00	XR50M250-501000-W00	XR45M250-500001-W00	Without part 16
2700	XR50M270-401000-W00	XR50M270-501000-W00	XR45M270-500001-W00	Without part 16
3000	XR50M300-401000-W00	XR50M300-501000-W00	R45M300-500001-W00	Without part 16
3300	XR50M330-401000-W00	XR50M330-501000-W00	XR45M330-500001-W00	Without part 16
3500	XR50M350-401000-W00	XR50M350-501000-W00	XR45M350-500001-W00	Without part 16
3600	XR50M360-401000-W00	XR50M360-501000-W00	XR45M360-500001-W00	Without part 16
3800	XR50M380-401000-W00	XR50M380-501000-W00	XR45M380-500001-W00	Without part 16
4000	XR50M400-401000-W00	XR50M400-501000-W00	XR45M400-500001-W00	XR50M400-500006-W00
4300	XR50M430-401000-W00	XR50M430-501000-W00	XR45M430-500001-W00	XR50M430-500006-W00
4500	XR50M450-401000-W00	XR50M450-501000-W00	XR45M450-500001-W00	XR50M450-500006-W00
4800	XR50M480-401000-W00	XR50M480-501000-W00	XR45M480-500001-W00	XR50M480-500006-W00
5000	XR50M500-401000-W00	XR50M500-501000-W00	XR45M500-500001-W00	XR50M500-500006-W00
5500	XR50M550-401000-W00	XR50M550-501000-W00	XR45M550-500001-W00	XR50M550-500006-W00
6000	XR50M600-401000-W00	XR50M600-501000-W00	XR45M600-500001-W00	XR50M600-500006-W00

图7 倾斜油缸  
Fig.7 Tilt cylinder

2级宽视野门架 SIMPLEX    2级全自由门架 DUPLEX    3级全自由门架 TRIPLEX

4t-x5t

序号 Item	物料码 Part NO.	名称 Description	数量 Qty	备注或适用车型 Remarks Or Serial No.	原物料码 Original Part No.
A1	20980000153	倾斜油缸(XR型) Tilt cylinder(XR-Type)	2	H≤4m, INC:1-24	XR45M300-600000-000
A1	209800001884	倾斜油缸(XR型) Tilt cylinder(XR-Type)	2	4m<H≤5m, INC:1-24	XR45M430-600000-000
A1	209800001885	倾斜油缸(XR型) Tilt cylinder(XR-Type)	2	H>5m, INC:1-24	XR45N550-600000-000
1	209800070001	耳环 Ear ring	2		XR45M300-600001-W00
2	300010050022	螺栓 M12×1.5×40 Bolt M12×1.5×40	2		G005785-012040-01
3	300020020006	螺母 M12×1.5 Nut M12×1.5	2		G006171-000012-02
4	300030010002	垫圈 12 Washer 12	2		G000093-000012-00
5	209800020238	活塞杆 Piston rod	2	H≤5m	R45M300-600001-000
5	209800020017	活塞杆 Piston rod	2	H>5m	R45M430-600001-000
6	209990000125	LBH 防尘圈 d40 Dust ring d40	2		CL0077C2-G00
7	209990000174	U形密封圈 d40 U-seal ring d40	2		RU3100400-Z20-G00
8	300130010110	O形密封圈 105×3.1 O-ring 105×3.1	2		G001235-010503P1-00
9	209990000548	斯特封 d40 Seal-ring d40	2		RS1300400-T46-G00
10	209800030039	导向套 Guide sleeve	2		R45M300-600002-000

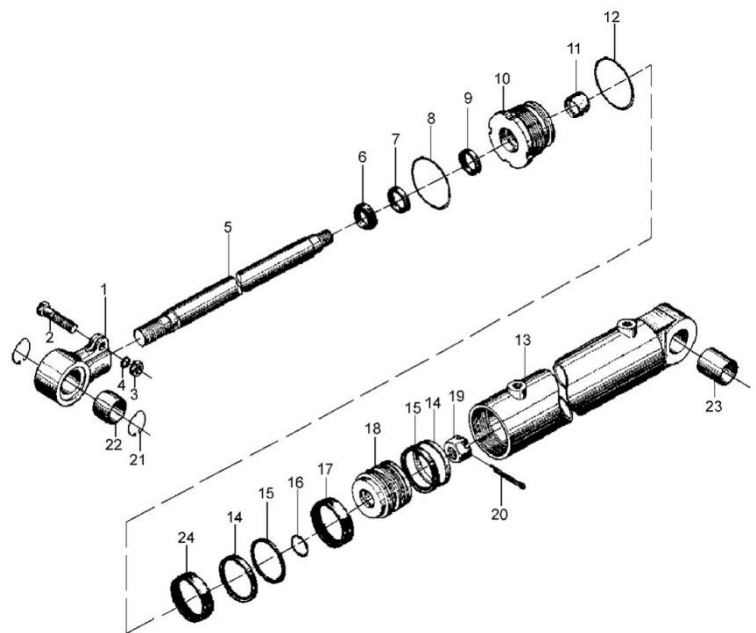


图7 倾斜油缸  
Fig.7 Tilt cylinder

2 级宽视野门架    2 级全自由门架    3 级全自由门架  
SIMPLEX            DUPLEX            TRIPLEX

4t-x5t

序号 Item	物料码 Part NO.	名称 Description	数量 Qty	备注或适用车型 Remarks Or Serial No.	原物料码 Original Part No.
11	205100040027	复合衬套 4030 Combination bush	2		SF-1-4030-G00
12	300130010119	O 形密封圈 100×3.1 O-ring 100×3.1	2		G001235-010003P1-00
13	209800010542	缸体 Cylinder body	2		J45M300-601000-W00
14	209990000151	OSI 密封圈 D100 OSI-seal ring D100	4		FU1078L0-G00
15	209800090228	保护圈 D100×85×3 Ring D100×85×3	4		R45M300-600003-000
16	300130010094	O 形密封圈 46×3.5 O-ring 46×3.5	2		G001235-004603P5-00
17	209800090229	支撑环 Support ring 100×95×14.3	2		R45M300-600004-W00
18	209800050053	活塞 Piston	2		R45M300-600005-000
19	300020250011	螺母 M30×2 Nut M30×2	2		G009457-000030-02
20	300050010058	销 5×50 Pin 5×50	2		G000091-005050-00
21	300060010016	孔用弹性挡圈-A 型 55 Snap ring 55	8		G0893P1-000055-00
22	205100040020	复合衬套 3525 Combination bush	2		SF-1-3525-G00
23	300140170018	轴承 GE35ES-2RS Bearing	2		G009163-3500000-01
24	209800090023	隔套 Sheath	2	4m<H≤5m	R45M430-600002-000
24	209800090015	隔套 Sheath	2	H>5m	R45N550-600002-000

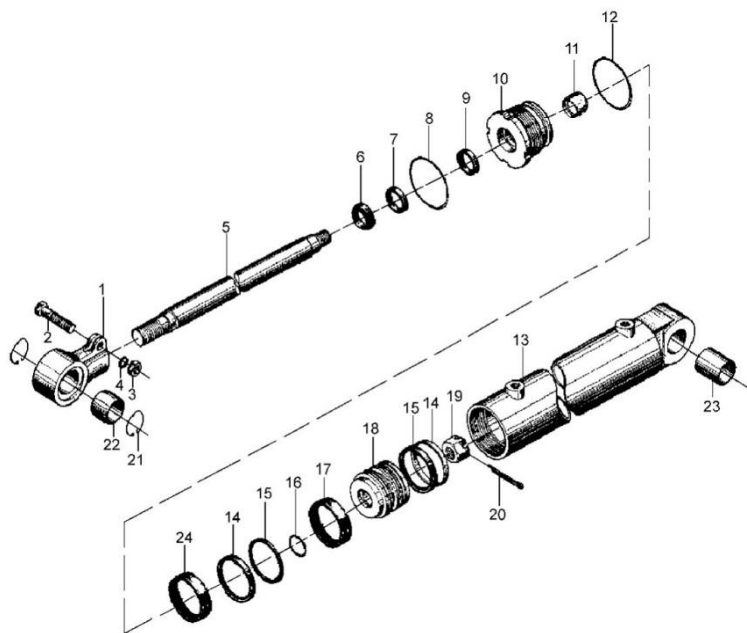


图7 倾斜油缸  
Fig.7 Tilt cylinder

2 级宽视野门架    2 级全自由门架    3 级全自由门架  
SIMPLEX            DUPLEX            TRIPLEX

4t-x5t

序号 Item	物料码 Part NO.	名称 Description	数量 Qty	备注或适用车型 Remarks Or Serial No.	原物料码 Original Part No.
K1	82002000026	倾斜缸修理包 Tilt cylinder- kit	1	INC:6-9,12,14,16	R45M300-6-000-Kit

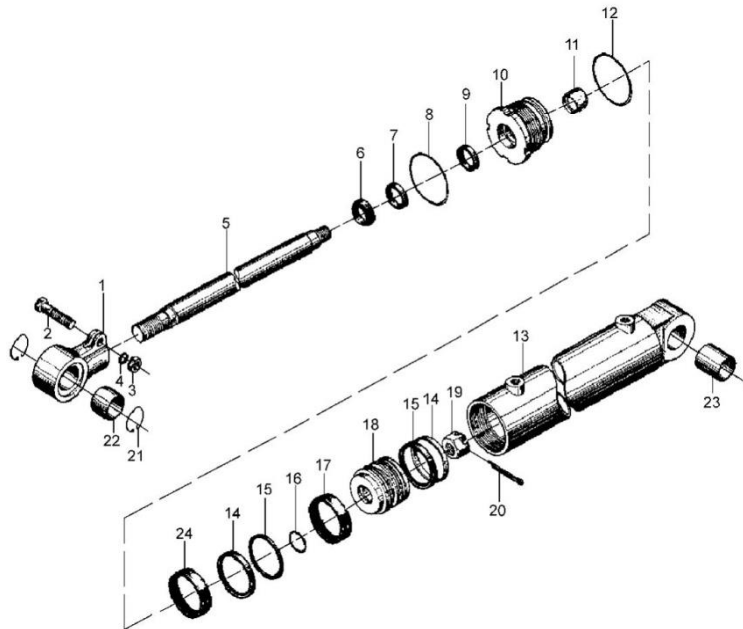
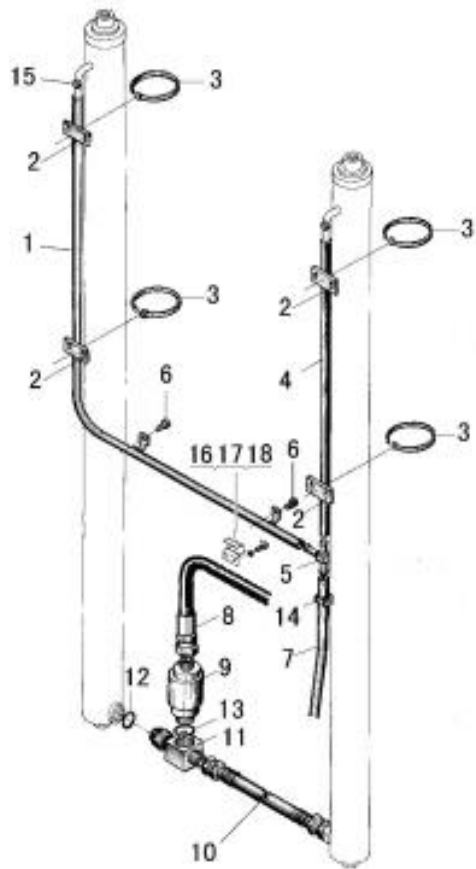




图8 油路系统  
Fig.8 Mast piping

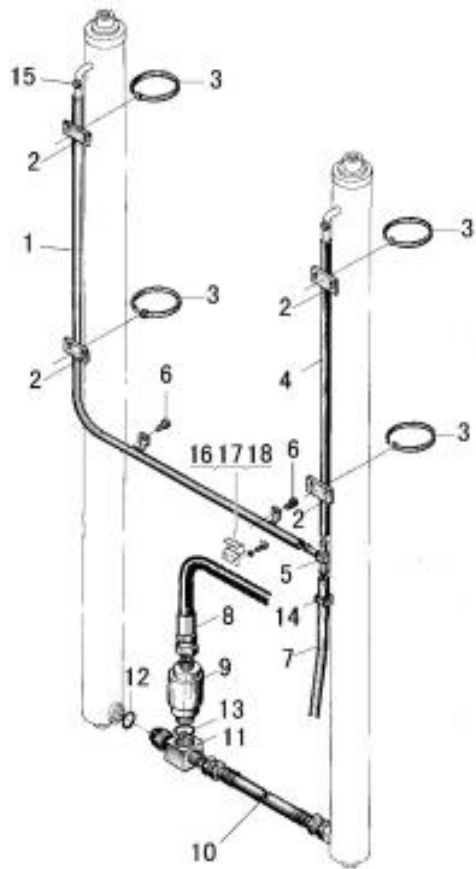
2 级宽视野门架 SIMPLEX 4t-x5t



序号 Item	物料码 Part NO.	名称 Description	数量 Qty	备注或适用车型 Remarks Or Serial No.	原物料码 Original Part No.
1	见选配表 4 See Optional Parts List 4	回油管 Return oil pipe	1		
2	209850090299	镶边 Band	4		N30M300-700002-000
3	209990000574	通用尼龙扎带 Clamp-band	4		GT-3001-G00
4	见选配表 4 See Optional Parts List 4	回油管 Return oil pipe	1		
5	209850090298	三通接头 Tee connector	1		N30M300-700005-000
6	209500270220	螺栓 M8×1.25×16 Bolt M8×1.25×16	3		N30M300-003000-000
7	201600040044	回油管 Return oil pipe	1		JGD-095A01406-000
8	209990000907	胶管接头 Connector	1		JGG-16A01150Z0-000
9	209850010002	限速阀 Speed limiting valve	1		XR45M300-701000-000
10	209990000908	胶管接头 Connector	1		JGG-13A00530A1-000
11	209850060049	三通接头 Tee connector	1		XR45M300-702000-000
12	300130010134	O 形密封圈 24×2.4 O-ring 24×2.4	1		G001235-002402P4-00
13	300130010112	O 形密封圈 29×3.1 O-ring 24×2.4	1		G001235-002803P1-00
14	209850080057	管夹 Clip	1		N30M300-700006-000
15	300290010007	喉箍 20 Hose clamps	1		JT08870-0200000000-00

图 8 油路系统  
Fig.8 Mast piping

2 级宽视野门架 SIMPLEX 4t-x5t



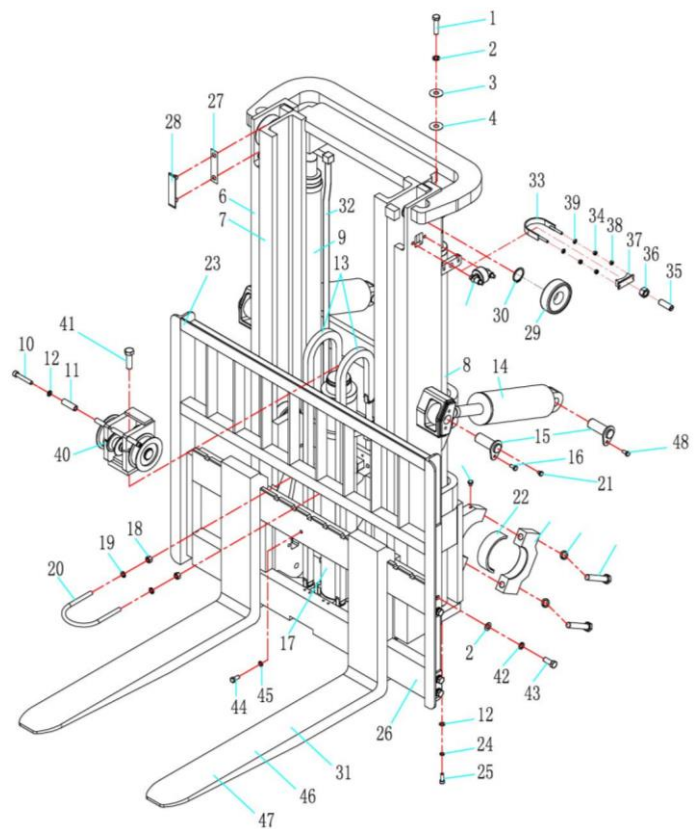
序号 Item	物料码 Part NO.	名称 Description	数量 Qty	备注或适用车型 Remarks Or Serial No.	原物料码 Original Part No.
16	209850080103	油管夹 Clip	1		4M3H-700008
17	300010020026	螺栓 M8×16 Bolt M8×16	2		G005781-008016-00
18	300030010015	垫圈 8 Washer 8	2		G000093-000008-00

选配表 4 <Optional Parts List 4>

序号 Item No.	1		4	
	物料码 Part No.	原物料码 Original Part No.	物料码 Part No.	原物料码 Original Part No.
2500	201600040026	JGD-095A01560-000	209850040956	JGD-095A01010-000
2700	209850041004	JGD-095A01660-000	209850040957	JGD-095A01110-000
3000	201600040042	JGD-095A01810-000	201600040043	JGD-095A01260-000
3300	209850040985	JGD-095A01960-000	209850040974	JGD-095A01410-000
3500	209850040986	JGD-095A02060-000	209850040960	JGD-095A01510-000
3600	209850040965	JGD-095A02110-000	201600040026	JGD-095A01560-000
3800	209850040989	JGD-095A02210-000	209850041004	JGD-095A01660-000
4000	209850040966	JGD-095A02360-000	201600040042	JGD-095A01810-000
4300	209850040991	JGD-095A02525-000	209850041006	JGD-095A01975-000
4500	209850041011	JGD-095A02635-000	209850041007	JGD-095A02085-000
4800	209850040994	JGD-095A02800-000	209850041009	JGD-095A02250-000
5000	209850041012	JGD-095A02910-000	209850040966	JGD-095A02360-000
5500	209850040996	JGD-095A03185-000	209850041011	JGD-095A02635-000
6000	209850040997	JGD-095A03460-000	209850041012	JGD-095A02910-000

图9 起升组件  
Fig.9 Lifting part

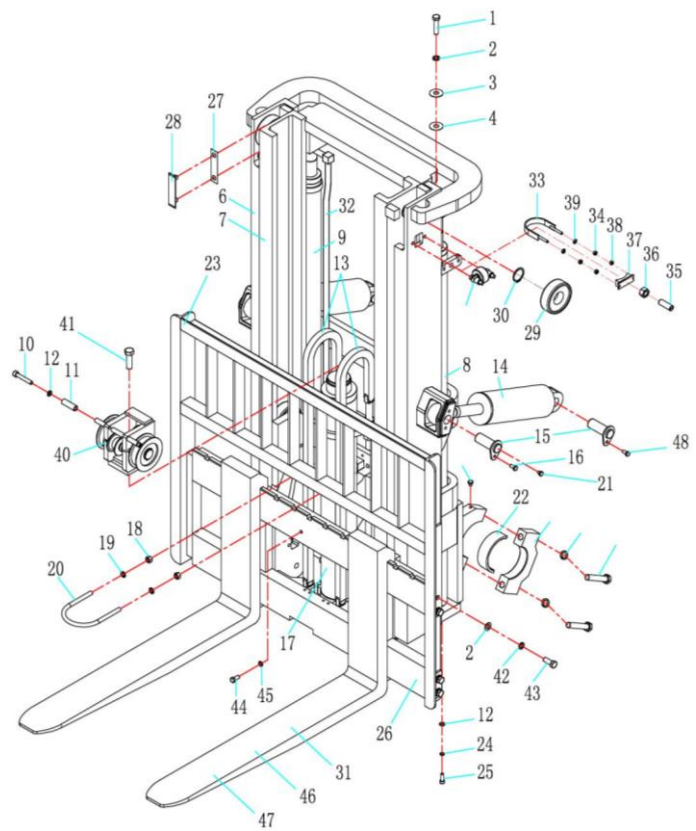
2级全自由门架 DUPLEX 4t-x5t



序号 Item	物料码 Part NO.	名称 Description	数量 Qty	备注或适用车型 Remarks Or Serial No.	原物料码 Original Part No.
1	300010050048	螺栓 M16×1.5×65 Bolt M16×1.5×65	2		G005785-016070-01
2	300030010004	垫圈 16 Washer 16	10		G000093-000016-00
3	202200270027	调整垫 Adjusting shim	2		40M3.3-000002
4	202200270028	调整垫 Adjusting shim	2		40M3.3-000003
5	209500070022	侧滚轮组 Side rollers	2	见图 I / See Fig.I	4M3F-202000
6	见图 11 See Fig.11	外门架 Outer mast	1	4t-4.5t	
6	见图 11 See Fig.11	外门架 Outer mast	1	x5t	
7	见图 11 See Fig.11	内门架 Inner mast	1		
8	见图 13 See Fig.13	左升降油缸 Lift cylinder,Left	1		
9	见图 13 See Fig.13	右升降油缸 Lift cylinder,Right	1		
10	300040020107	螺钉 M10×60 Screw M10×60	1		G000070-010060-00
11	201100310045	套筒 Sleeve	2		2025N4.3-000004
12	300030010001	垫圈 10 Washer 10	2		G000093-000010-00
13	见图 10 See Fig.10	链条总成 Chain assy	2	4t-4.5t Non-built 非内置式	
13	见图 10 See Fig.10	链条总成 Chain assy	2	4t-4.5t Built -in 内置式	

图9 起升组件  
Fig.9 Lifting part

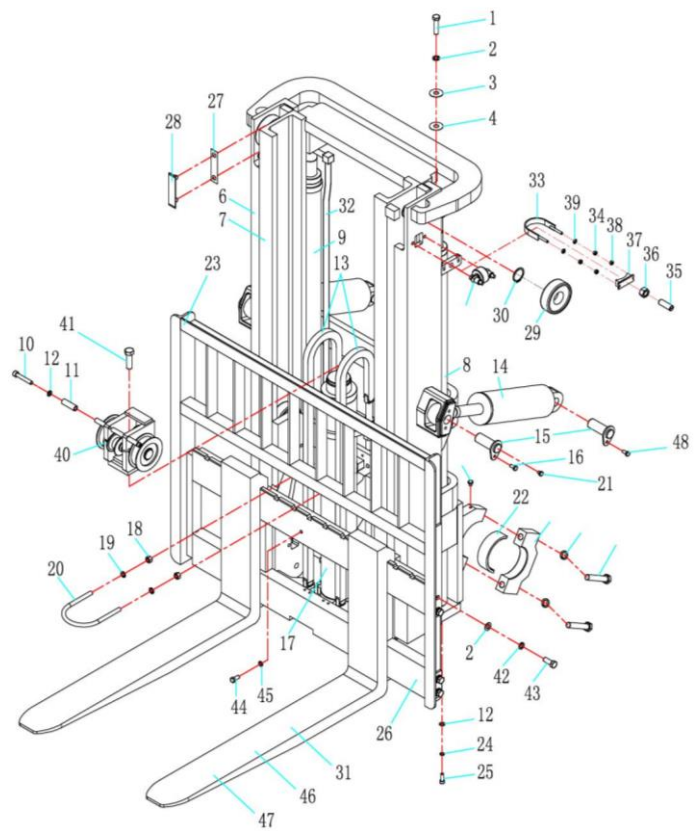
2级全自由门架 DUPLEX 4t-x5t



序号 Item	物料码 Part NO.	名称 Description	数量 Qty	备注或适用车型 Remarks Or Serial No.	原物料码 Original Part No.
13	见图 10 See Fig.10	链条总成 Chain assy	2	x5t	
14	见图 6 See Fig.6	倾斜油缸 Tilt cylinder	2		
15	209500270174	销轴 Pin shaft	4		R45M300-001000-000
16	300010040005	螺栓 M10×20 Bolt M10×20	2		G005783-010020-00
17	见图 14 See Fig.14	短升降油缸 Lift cylinder,Short	1		
18	300020010007	螺母 M14 Nut M14	2		G006170-000014-00
19	300030010003	垫圈 14 Washer 14	2		G000093-000014-00
20	209500170096	短缸固定螺栓 Bolt	1		4N4.5H-000001
21	300170040002	油杯 M10×1 Oil cup M10×1	6		G001152-010001-00
22	209500220002	轴瓦 Bearing liner	2		R45M300-000002-000
23	209750000044	挡货架 Load bracket	1	4t-4.5t	R45M300-004000-000
23	209750000028	挡货架 Load bracket	1	x5t	RX50M300-002000-000
24	300030040002	垫圈 10 Washer 10	2		G0097P1-000010-00
25	300040020075	螺钉 M10×30 Screw M10×30	2		G000070-010030-00
26	300030010001	垫圈 10 Washer 10	4		G000093-000010-00

图9 起升组件  
Fig.9 Lifting part

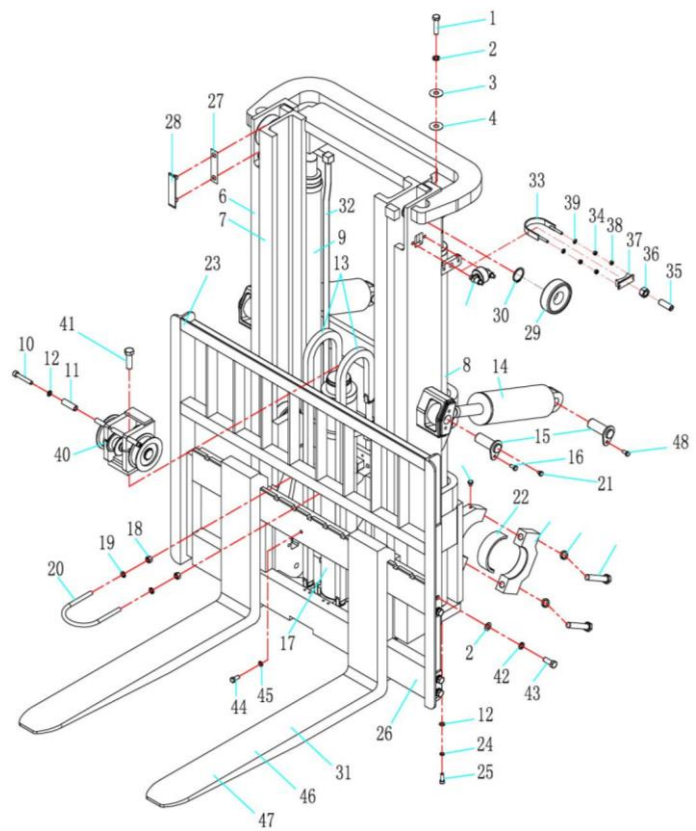
2级全自由门架 DUPLEX 4t-x5t



序号 Item	物料码 Part NO.	名称 Description	数量 Qty	备注或适用车型 Remarks Or Serial No.	原物料码 Original Part No.
26	见图5 / See Fig.5	侧移架总成 Side carriage assy	1	4t-4.5t	
26	见图5 / See Fig.5	侧移架总成 Side carriage assy	1	x5t	
27	209500270168	导轨衬垫 Rubber cover	2		R45M300-000006-000
28	209500270172	调整垫片 Adjusting shim	2		R45M300-000007-000
29	209990000405	起升滚轮 Roller	2		10310D-G00
30	300060030018	轴用弹性挡圈-A型 50 Washer 50	2		G0894P1-000050-00
31	见图 III See Fig. III	货叉总成 Fork assembly	2		
32	见图 15 See Fig.15	油路系统 Mast piping	1		
33	209500170021	油缸固定螺栓 Bolt	2		R45M300-003000-000
34	300020010016	螺母 M8 Nut M8	4		G006170-000008-00
35	209500180034	螺钉 Screw	2		R45M300-000004-000
36	300020010009	螺母 M20 Nut M20	2		G006170-000020-00
37	209800000464	油缸支撑座 Cylinder support seat	2		R45M300-005000-000
38	300020420002	盖型螺母 M8 Acorn nut M8	4		G000923-000008-00
39	300030040014	垫圈 8 Washer 8	4		G0097P1-000008-00

图9 起升组件  
Fig.9 Lifting part

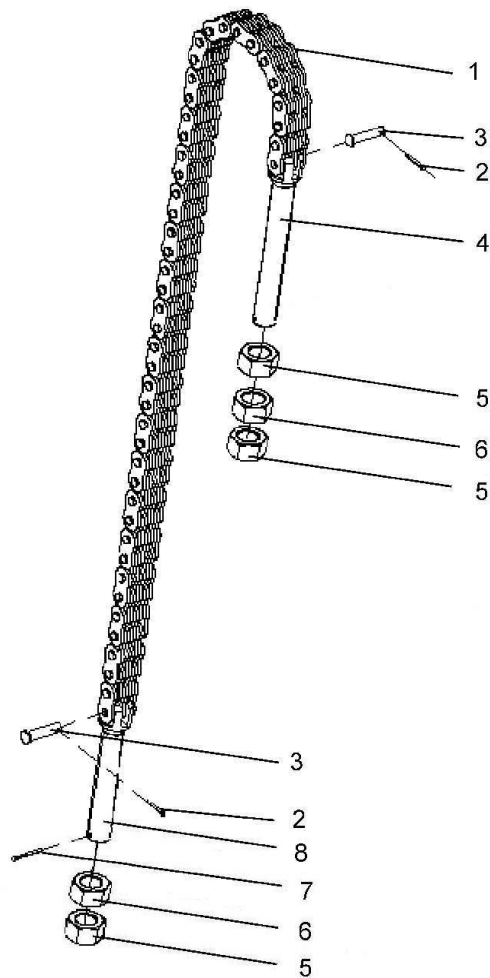
2级全自由门架 DUPLEX 4t-x5t



序号 Item	物料码 Part NO.	名称 Description	数量 Qty	备注或适用车型 Remarks Or Serial No.	原物料码 Original Part No.
40	见图 II See Fig. II	链条座组件 Chain seat assy	1	4t-4.5t	
40	见图 II See Fig. II	链条座组件 Chain seat assy	1	x5t	
41	300010030102	螺栓 M20x60 Bolt M20x60	1		G005782-020060-00
42	300030040005	垫圈 16 Washer 16	8		G0097P1-000016-00
43	300010040070	螺栓 M16x40 Bolt M16x40	8		G005783-016040-00
44	300010030033	螺栓 M12x25 Bolt M12x25	1		G005782-012025-00
45	300030010002	垫圈 12 Washer 12	1		G000093-000012-00
46	见图 III See Fig. III	货叉总成 Fork assembly	2		
47	见图 III See Fig. III	货叉总成 Fork assembly	2		
48	209500270217	螺栓 M10x1.25x20 Bolt M10x1.25x20	2		N30M300-004000-000

图 10 链条总成  
Fig.10 Chain assy

2 级全自由门架 DUPLEX 4t-x5t

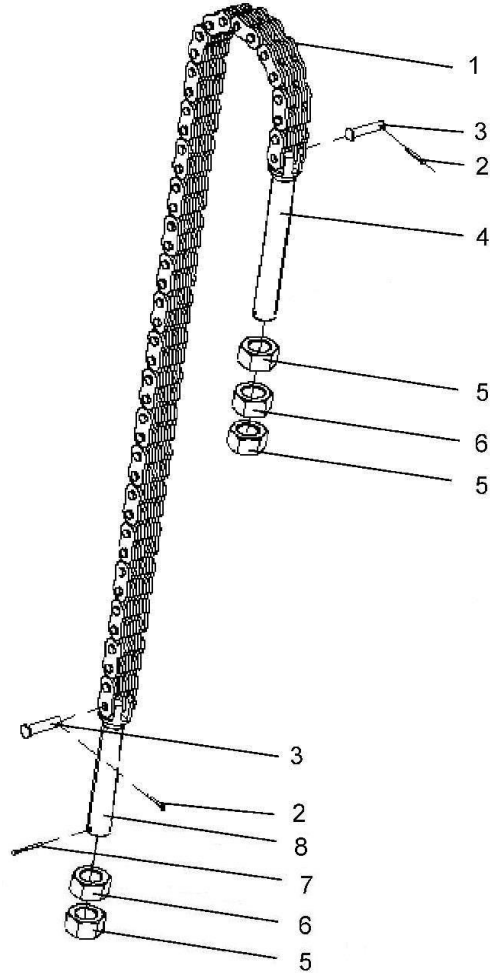


序号 Item	物料码 Part NO.	名称 Description	数量 Qty	备注或适用车型 Remarks Or Serial No.	原物料码 Original Part No.
A1	见选配表 5 See Optional Parts List 5	链条总成 Chain assy	1	4t-4.5t Non-built 非内置式	
A2	见选配表 5 See Optional Parts List 5	链条总成 Chain assy	1	4t-4.5t Built -in 内置式	
A3	见选配表 5 See Optional Parts List 5	链条总成 Chain assy	1	x5t	
1	NO PART NO.	板式链 LH2023 Chain LH2023	1	4t-4.5t Non-built 非内置式	
1	NO PART NO.	板式链 LH2023 Chain LH2023	1	4t-4.5t Built -in 内置式	
1	NO PART NO.	板式链 LH1644 Chain LH1644	1	x5t	
2	300050010042	销 4x20 Pin 4x20	2	4t-4.5t	G000091-004020-00
2	300050010038	销 3x20 Pin 3x20	2	x5t	G000091-003020-00
3	NO PART NO.	销轴 Pin shaft	2	4t-4.5t	
3	NO PART NO.	销轴 Pin shaft	2	x5t	
4	NO PART NO.	链条接头 Connector	1	4t-4.5t	
4	NO PART NO.	链条接头 Connector	1	x5t	
5	209500200082	螺母 Nut	3		50M3A-800001
6	209500200083	球螺母 Nut	2		50M3A-800002
7	300050010013	销 2.5x28 Pin 2.5x28	1		G000091-2P5028-00



图 10 链条总成  
Fig.10 Chain assy

2级全自由门架 DUPLEX 4t-x5t



序号 Item	物料码 Part NO.	名称 Description	数量 Qty	备注或适用车型 Remarks Or Serial No.	原物料码 Original Part No.
8	NO PART NO.	链条接头 Connector	1	4t-4.5t	
8	NO PART NO.	链条接头 Connector	1	x5t	

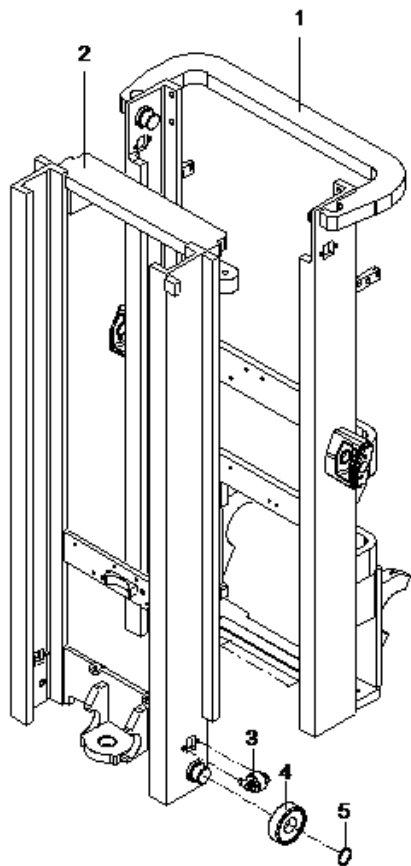
选配表 5 <Optional Parts List 5>

序号 Item No.	A1 4t-4.5t, Non-built 非内置式	A2 4t-4.5t, Built -in 内置式	A3,x5t
起升高度 Lift Height	物料码 Part No.	物料码 Part No.	物料码 Part No.
2500	209500190122	209500190122	209500190048
2750	209990000815	209990000815	209500190099
3000	209990000814	209990000814	209500190125
3300	209500191165	209500191174	209500191336
3600	209500191174	209500191166	209500191337

序号 Item No.	A1 4t-4.5t, Non-built 非内置式	A2 4t-4.5t, Built -in 内置式	A3,x5t
起升高度 Lift Height	原物料码 Original Part No.	原物料码 Original Part No.	原物料码 Original Part No.
2500	LH-2023041-100	LH-2023041-100	LH-1644051-100
2750	LH-2023043-100	LH-2023043-100	LH-1644053-100
3000	LH-2023045-100	LH-2023045-100	LH-1644055-100
3300	LH-2023047-100	LH-2023049-100	LH-1644059-100
3600	LH-2023049-100	LH-2023051-100	LH-1644061-100

图 11 门架  
Fig.11 Mast

2 级全自由门架 DUPLEX 4t-x5t



序号 Item	物料码 Part NO.	名称 Description	数量 Qty	备注或适用车型 Remarks Or Serial No.	原物料码 Original Part No.
1	见选配表 6 See Optional Parts List 6	外门架 Outer mast	1	4t-4.5t	
1	见选配表 6 See Optional Parts List 6	外门架 Outer mast	1	x5t	
A1	见选配表 6 See Optional Parts List 6	内门架 Inner mast	1	包含 / INC: 2-5	
2	见选配表 6 See Optional Parts List 6	内门架体 Inner mast	1		
3	209500070022	侧滚轮组 Side rollers	2	见图 I / See Fig.I	4M3F-202000
3	209990000405	起升滚轮 Roller	2		10310D-G00
4	300060030018	轴用弹性挡圈-A 型 50 Washer 50	2		G0894P1-000050-00

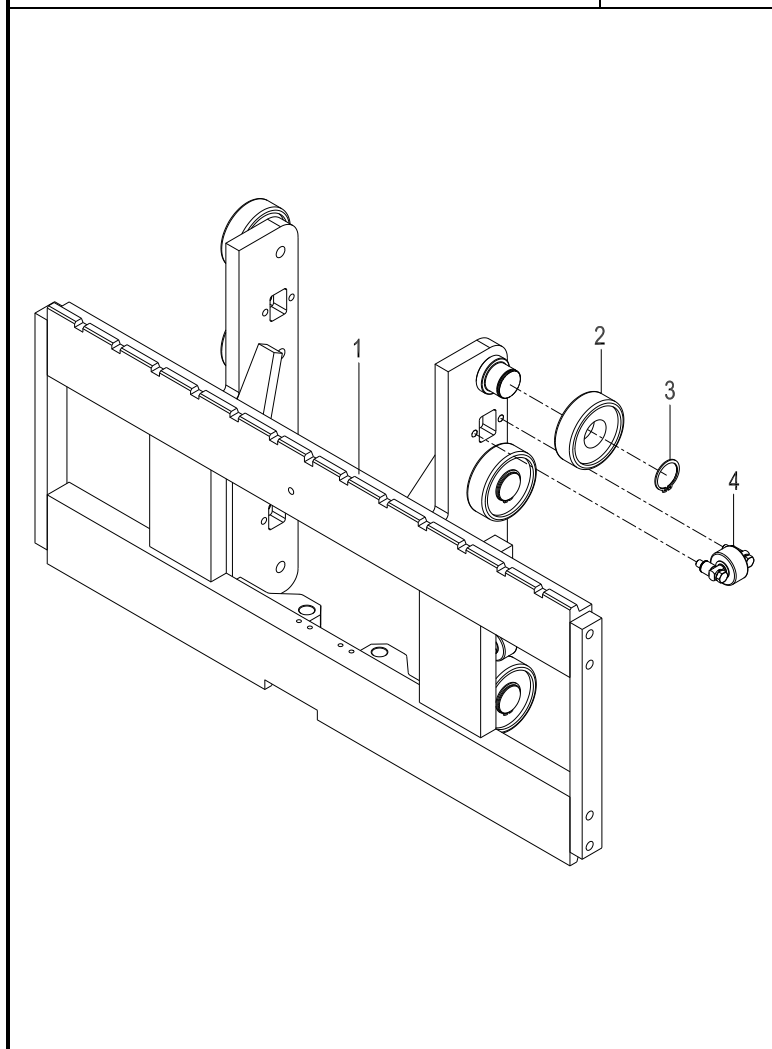
选配表 6 <Optional Parts List 6>

	外门架 Outer mast	外门架 Outer mast	内门架 Inner mast	内门架体 Inner mast
序号 Item No.	1 (4t-4.5t)	1 (x5t)	A1	2
起升高度 Lift Height	物料码 Part No.	物料码 Part No.	物料码 Part No.	物料码 Part No.
2500	209550000673	209550000673	209650000650	209650010850
2750	209550000435	209550000435	209650000415	209650010806
3000	209550000674	209550000674	209650000651	209650010851
3300	209550000675	209550000675	209650000652	209650010852
3600	209550000677	209550000677	209650000654	209650010854

	外门架 Outer mast	外门架 Outer mast	内门架 Inner mast	内门架体 Inner mast
序号 Item No.	1 (4t-4.5t)	1 (x5t)	A1	2
起升高度 Lift Height	原物料码 Original Part No.	原物料码 Original Part No.	原物料码 Original Part No.	原物料码 Original Part No.
2500	XR45U250-100000-000	XR45U250-100000-000	XR45U250-200000-000	XR45U250-201000-000
2750	XR45U275-100000-000	XR45U275-100000-000	XR45U275-200000-000	XR45U275-201000-000
3000	XR45U300-100000-000	XR45U300-100000-000	XR45U300-200000-000	XR45U300-201000-000
3300	XR45U330-100000-000	XR45U330-100000-000	XR45U330-200000-000	XR45U330-201000-000
3600	XR45U360-100000-000	XR45U360-100000-000	XR45U360-200000-000	XR45U360-201000-000

图 12 货叉架总成  
Fig.12 Fork carriage assy

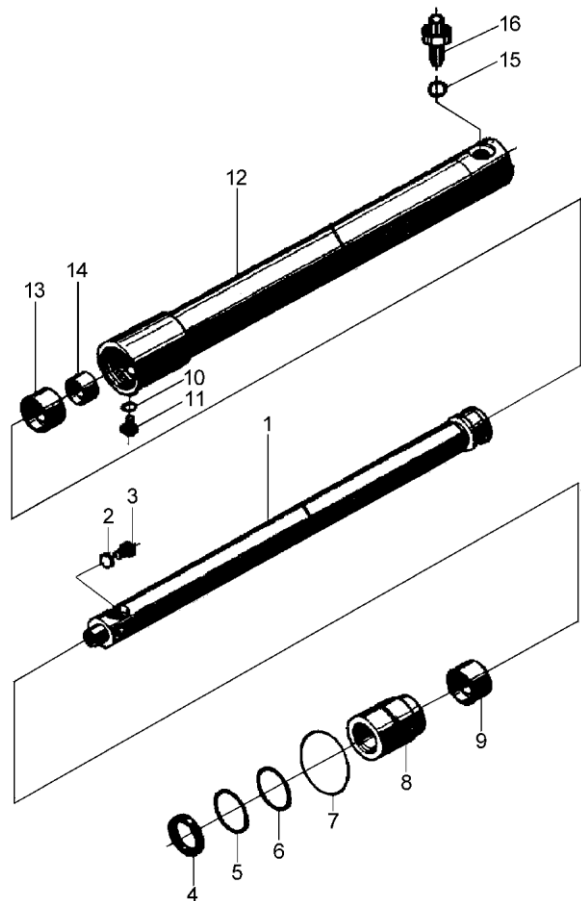
2 级全自由门架 DUPLEX 4t-x5t



序号 Item	物料码 Part NO.	名称 Description	数量 Qty	备注或适用车型 Remarks Or Serial No.	原物料码 Original Part No.
A1	209700001150	货叉架总成 Fork carriage assy	1	4t-4.5t	XR45U275-300000-000
A2	209700001149	货叉架总成 Fork carriage assy	1	x5t	XRX50U275-300000-000
1	209700011219	货叉架体 Fork carriage	1	4t-4.5t	XR45U275-301000-000
1	209700011218	货叉架体 Fork carriage	1	x5t	XRX50U275-301000-000
2	209990000405	起升滚轮 Roller	6		10310D-G00
3	300060030018	轴用弹性挡圈-A 型 50 Snap ring 50	6		G0894P1-000050-00
4	209500070022	侧滚轮组 Side rollers	4	见图 I / See Fig.I	4M3F-202000

图 13 左右升降油缸  
Fig.13 Lift cylinder, right& left

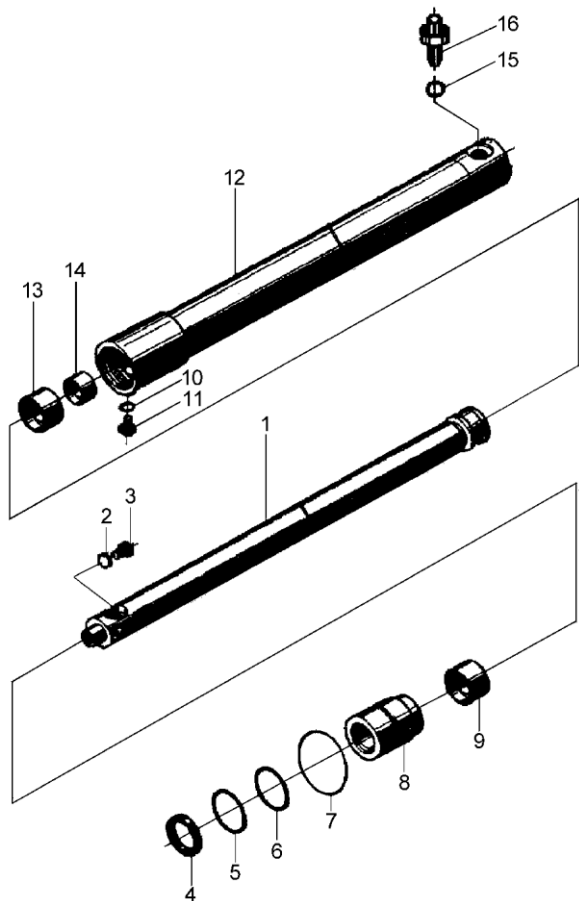
2 级全自由门架 DUPLEX 4t-x5t



序号 Item	物料码 Part No.	名称 Description	数量 Qty	备注或适用车型 Remarks Or Serial No.	原物料码 Original Part No.
A1	见选配表 7 See Optional Parts List 7	右升降油缸 Lift cylinder,Right	1	INC:1-14	
A2	见选配表 7 See Optional Parts List 7	左升降油缸 Lift cylinder,Left	1	INC:1,4-16	
1	见选配表 7 See Optional Parts List 7	右柱塞杆 Pole stopper rod,Right	1		
1	见选配表 7 See Optional Parts List 7	左柱塞杆 Pole stopper rod,Left	1		
2	300030140016	垫圈 22 Washer 22	1	右升降油缸 Lift cylinder,Right	J000982-000022-00
3	209800090061	堵塞 Plug	1	右升降油缸 Lift cylinder,Right	2.5CDJ32-00-01-G00
4	204100070378	DKI 防尘圈 d50 DKI-dustproof ring d50	2		FD2831A0-G00
5	209800090603	挡圈 Snap ring	2		4U2.75L-300001
6	204100070391	ISI 密封圈 d50 ISI-seal ring d50	2		FU0619K0-G00
7	300130010131	O 形密封圈 70x3.1 O-ring 70x3.1	1		G001235-007003P1-00
8	209800030034	导向套 Guide sleeve	2		R45U275-400001-W00
9	205100040004	复合衬套 5030 Combination bush	2		SF-1-5030-G00
10	300030140012	垫圈 8 Washer 8	2		J000982-000008-00
11	209800090204	放气螺塞 Plug	2		R45U275-400002-W00
12	见选配表 7 See Optional Parts List 7	右缸体 Cylinder body, Right	2		

图 13 左右升降油缸  
Fig.13 Lift cylinder, right& left

2 级全自由门架 DUPLEX 4t-x5t



序号 Item	物料码 Part No.	名称 Description	数量 Qty	备注或适用车型 Remarks Or Serial No.	原物料码 Original Part No.
12	见选配表 7 See Optional Parts List 7	左缸体 Cylinder body, Left	2		
13	209800090604	支承环 Support ring	2		4U2.75L-300003
14	209800080036	隔套 Sheath	2		N35M300-400006-W00
15	206300020009	O 形密封圈 P18 O-ring P18	1	右升降油缸 Lift cylinder,RightL	JISB2401-P18-G00
16	209800080022	油嘴组件 Nozzle valve assy	1	右升降油缸 Lift cylinder,Right	R45M300-402000-W00
K1	820020000027	左缸修理包 Lift cylinde, leftr-kit	1	INC:4,6,7	R45U275-4/5-000-Kit
K1	820020000028	右缸修理包 Lift cylinder, right-kit	1	INC:4,6,7,15	R45U275-4/5-001-Kit

选配表 7 <Optional Parts List 7>

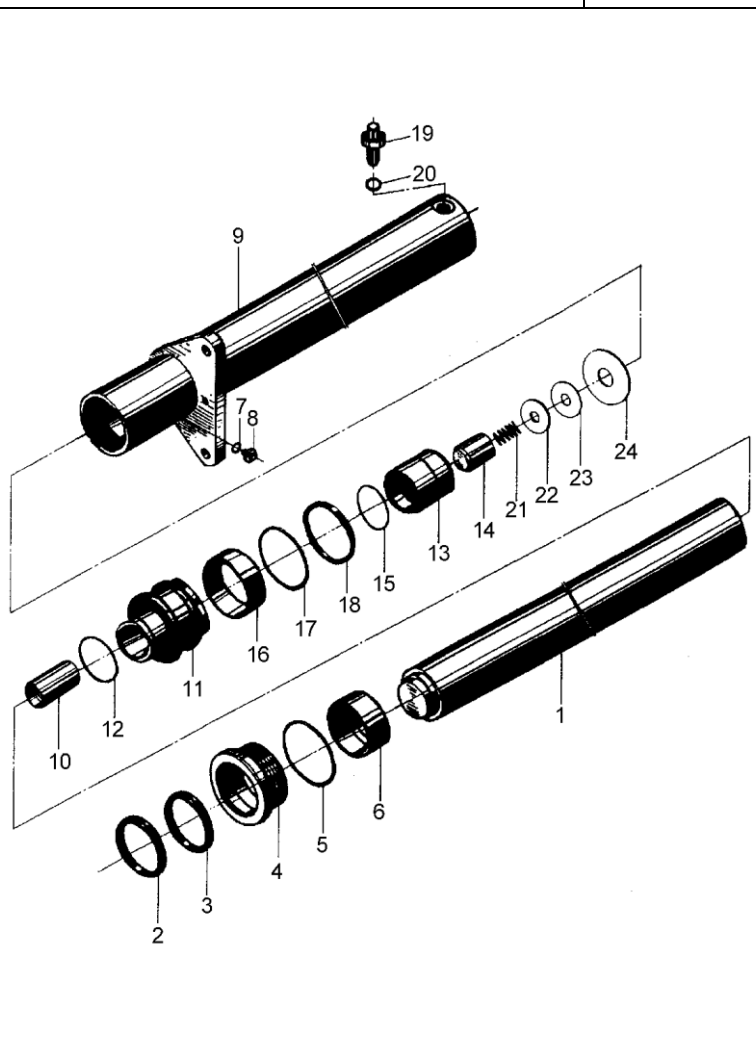
序号 Item No.	A1	A2	1(right)	1(left)	12(right)	12(left)
起升高度 Lift Height	物料码 Part No.	物料码 Part No.	物料码 Part No.	物料码 Part No.	物料码 Part No.	物料码 Part No.
2500	209800002472	209800002478	209800021399	209800021393	209800012514	209800012518
2750	209800001924	209800001960	209800020222	209800020224	209800011691	209800011707
3000	209800002473	209800002479	209800021400	209800021394	209800012515	209800012519
3300	209800002474	209800002480	209800021401	209800021395	209800012516	209800012520
3600	209800002476	209800002482	209800021403	209800021397	209800012517	209800012521

序号 Item No.	A1	A2	1(right)	1(left)	12(right)	12(left)
起升高度 Lift Height	原物料码 Original Part No.	原物料码 Original Part No.	原物料码 Original Part No.	原物料码 Original Part No.	原物料码 Original Part No.	原物料码 Original Part No.
2500	XR45U250-400000-000	XR45U250-500000-000	R45U250-401000-W01	R45U250-501000-W01	XR45U250-402000-W00	XR45U250-502000-W00
2750	XR45U275-400000-000	XR45U275-500000-000	R45U275-401000-W01	R45U275-501000-W01	XR45U275-401000-W00	XR45U275-501000-W00
3000	XR45U300-400000-000	XR45U300-500000-000	R45U300-401000-W01	R45U300-501000-W01	XR45U300-402000-W00	XR45U300-502000-W00
3300	XR45U330-400000-000	XR45U330-500000-000	R45U330-401000-W01	R45U330-501000-W01	XR45U330-402000-W00	XR45U330-502000-W00
3600	XR45U360-400000-000	XR45U360-500000-000	R45U360-401000-W01	R45U360-501000-W01	XR45U360-402000-W00	XR45U360-502000-W00



图 14 短升降油缸  
Fig.14 Lift cylinder,Short

2 级全自由门架 DUPLEX 4t-x5t

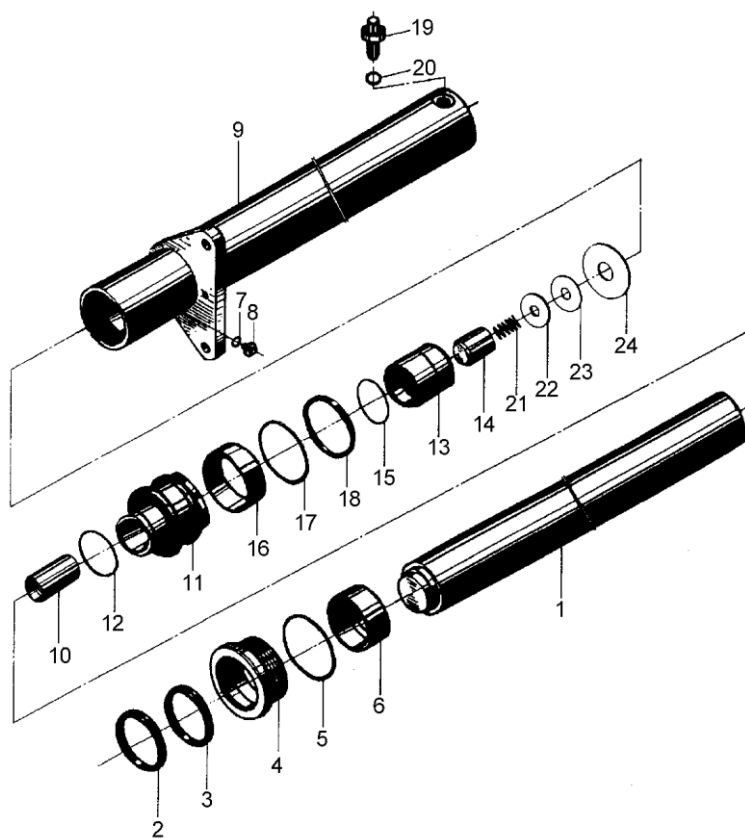


序号 Item	物料码 Part NO.	名称 Description	数量 Qty	备注或适用车型 Remarks Or Serial No.	原物料码 Original Part No.
A	See Optional Parts List 8	短升降油缸 Lift cylinder,Short	1	INC:1-24	
1	See Optional Parts List 8	活塞杆 Piston rod	1		
2	209990000134	LBH 防尘圈 d90 LBH-dustproof ring d90	1		CL0149C0-G00
3	204100070397	ISI 密封圈 d90 ISI-seal ring d90	1		FU1024K0-G00
4	209800030036	导向套 Guide sleeve	1		R45N450-400002-W00
5	300130010069	O 形密封圈 115x3.1 O-ring 115x3.1	1		G001235-011503P1-00
6	205100040037	复合衬套 9050 Combination bush	1		SF-1-9050-G00
7	300130010098	O 形密封圈 8x1.9 O-ring 8x1.9	1		G001235-000801P9-00
8	209800090220	放气螺塞 Air bleeder plug	1		R45N450-400003-W00
9	See Optional Parts List 8	缸体 Cylinder body	1		
10	209850070489	油管 Oil pipe	1		R45N450-400004-W00
11	209800050050	活塞 Piston	1		R45N450-400005-W00
12	209500270165	钢丝挡圈 $\phi 4$ Steel-wire snap ring	1		R45N450-400006-W00
13	209800090218	阀套 Valve bush	1		R45N450-400007-W00
14	209800090219	阀芯 Spool	1		R45N450-400008-W00

图 14 短升降油缸  
Fig.14 Lift cylinder,Short

2 级全自由门架 DUPLEX 4t-x5t

序号 Item	物料码 Part NO.	名称 Description	数量 Qty	备注或适用车型 Remarks Or Serial No.	原物料码 Original Part No.
15	300130010090	O 形密封圈 26x2.4 O-ring 26x2.4	1		G001235-002602P4-00
16	209800090223	支承环 110x105x20 Ring110x105x20	1		R45N450-400009-W00
17	209800090216	保护圈 110x95x3 Protection ring	1		R45N450-400010-W00
18	209990000152	OSI 密封圈 D110 OSI-seal ring D110	1		FU1152L0-G00
19	209800080021	油嘴组件 Nozzle valve assy	1		R45N450-403000-W00
20	300130010041	O 形密封圈 22.4x3.55 O-ring 22.4x3.5	1		GT34521-22P43P55-00
21	209800090217	弹簧 Spring	1		R45N450-400011-W00
22	209800010349	挡板 Guard	1		R45N450-400012-W00
23	300060010003	挡圈 18 Snap ring 18	1		G0893P1-000018-00
24	300060010023	孔用弹性挡圈-A 型 28 Snap ring 28	1		G0893P1-000028-00
K1	820020000029	短缸修理包 Lift cylinder-kit	1	INC:2,3,5,7,15,18,20	R45U275-6-001-Kit



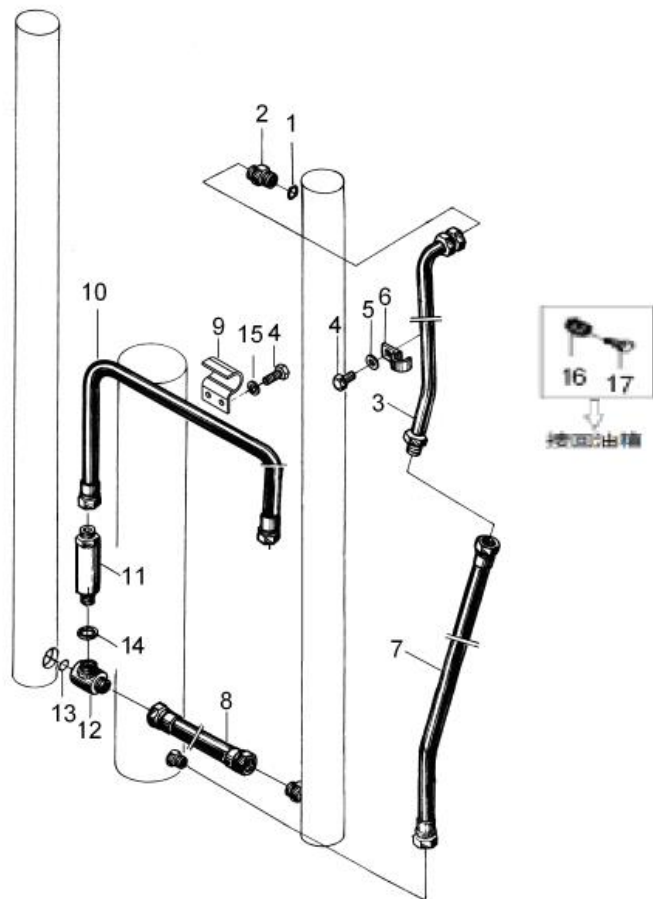
选配表 8 <Optional Parts List 8>

序号 Item No.	A	1	9
起升高度 Lift Height	物料码 Part No.	物料码 Part No.	借、通用件物料码 Borrowed Part No.
2500	209800002485	209800021407	209800012138
2750	209800000431	209800020220	209800010328
3000	209800002486	209800021408	209800012139
3300	209800002487	209800021409	209800012140
3600	209800002489	209800021411	209800012142

序号 Item No.	A	1	9
起升高度 Lift Height	原物料码 Original Part No.	原物料码 Original Part No.	原物料码 Original Part No.
2500	R45U250-600000-001	R45U250-600001-W00	R45U250-603000-W00
2750	R45U275-600000-001	R45U275-600001-W00	R45U275-603000-W00
3000	R45U300-600000-001	R45U300-600001-W00	R45U300-603000-W00
3300	R45U330-600000-001	R45U330-600001-W00	R45U330-603000-W00
3600	R45U360-600000-001	R45U360-600001-W00	R45U360-603000-W00

图 15 油路系统  
Fig.15 Mast piping

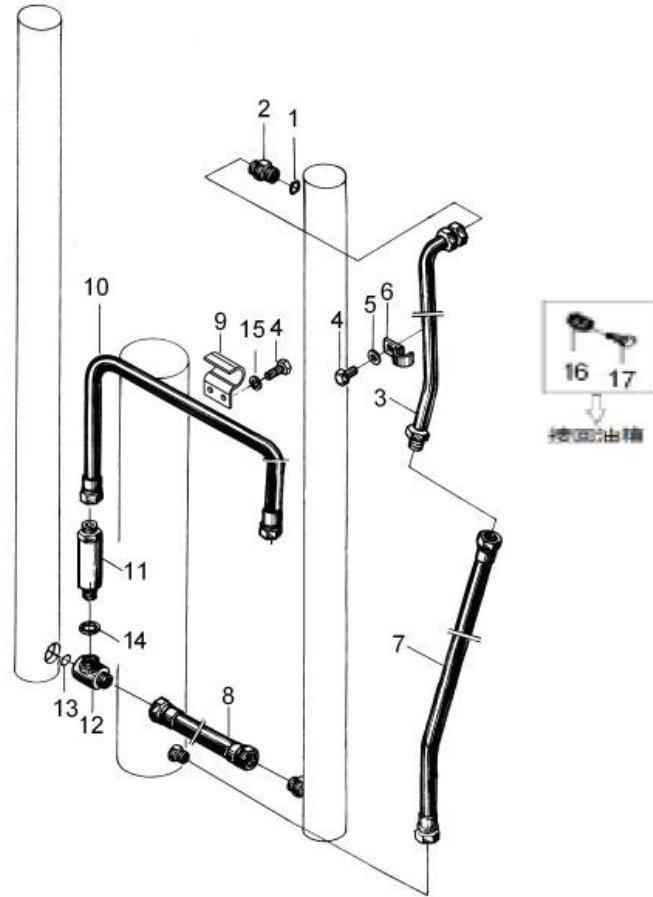
2 级全自由门架 DUPLEX 4t-x5t



序号 Item	物料码 Part NO.	名称 Description	数量 Qty	备注或适用车型 Remarks Or Serial No.	原物料码 Original Part No.
A	209850000401	油路系统 Mast piping	1		R45U275-700000-001
1	300030140016	垫圈 22 Washer 22	1		J000982-000022-00
2	209850060360	直通接头 Connector	1		50U2.5-800001
3	见选配表 9 See Optional Parts List 9	钢油管 Connector	1		
4	300010020026	螺栓 M8×16 Blot M8×16	1		G005781-008016-00
5	300030100010	垫圈 8 Washer 8	1		G000848-000008-00
6	209850080108	管夹 Clip	1		2.5U3H-600004
7	见选配表 9 See Optional Parts List 9	胶管接头 Connector	1		
8	209990000908	胶管接头 Connector	1		JGG-13A00530A1-000
9	209850080103	油管夹 Pipe clip	1		4M3H-700008
10	209990000907	胶管接头 Connector	1		JGG-16A01150Z0-000
11	209850010002	限速阀 Speed limiting valve	1		XR45M300-701000-000
12	209850060049	三通接头 Connector	1		XR45M300-702000-000
13	300130010134	O 形密封圈 24×2.4 O-ring 24×2.4	1		G001235-002402P4-00
14	300130010112	O 形密封圈 28×3.1 O-ring 28×3.1	1		G001235-002803P1-00

图 15 油路系统  
Fig.15 Mast piping

2 级全自由门架 DUPLEX 4t-x5t



序号 Item	物料码 Part NO.	名称 Description	数量 Qty	备注或适用车型 Remarks Or Serial No.	原物料码 Original Part No.
15	300030010015	垫圈 8 Washer 8	1		G000093-000008-00
16	209850090295	堵塞 Plug	1		N30U300-700007-000
17	209990000495	双钢丝环箍 18 Clamps 18	1		Q672-18-G00

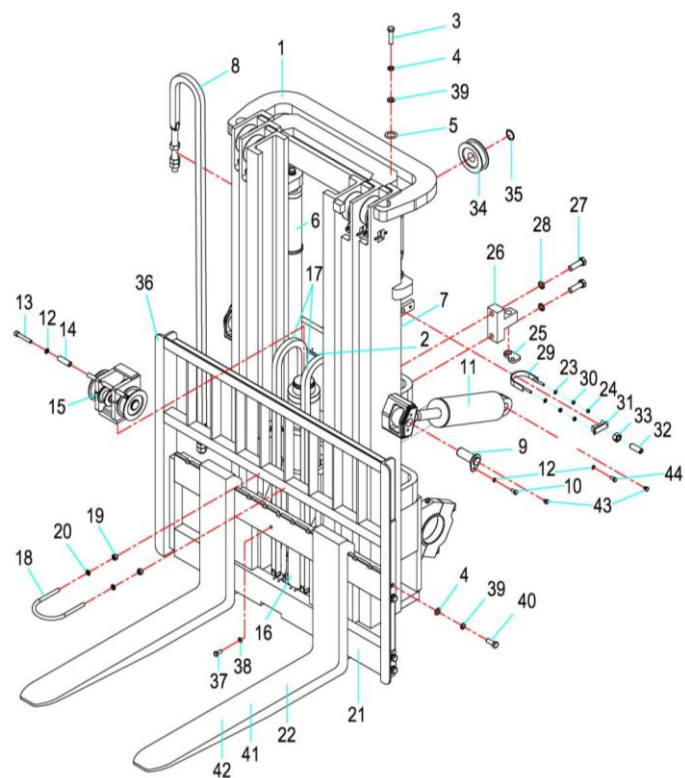
选配表 9 <Optional Parts List 9> (4t-x5t)

序号 Item No.	3 钢油管 Connector	7 胶管接头 Connector
起升高度 Lift Height	物料码 Part No.	物料码 Part No.
2500	209850071844	209850061115
2750	209800090206	209850060642
3000	209850071845	209850061117
3300	209850071846	209850061117
3600	209850071847	209850061117

序号 Item No.	3 钢油管 Connector	7 胶管接头 Connector
起升高度 Lift Height	原物料码 Original Part No.	原物料码 Original Part No.
2500	R45U250-702000-001	JGG-16A00465Z2-000
2750	R45U275-702000-001	JGG-16A00470Z2-000
3000	R45U300-702000-001	JGG-16A00525Z2-000
3300	R45U330-702000-001	JGG-16A00525Z2-000
3600	R45U370-702000-001	JGG-16A00525Z2-000

图 16 起升组件  
Fig.16 Lifting part

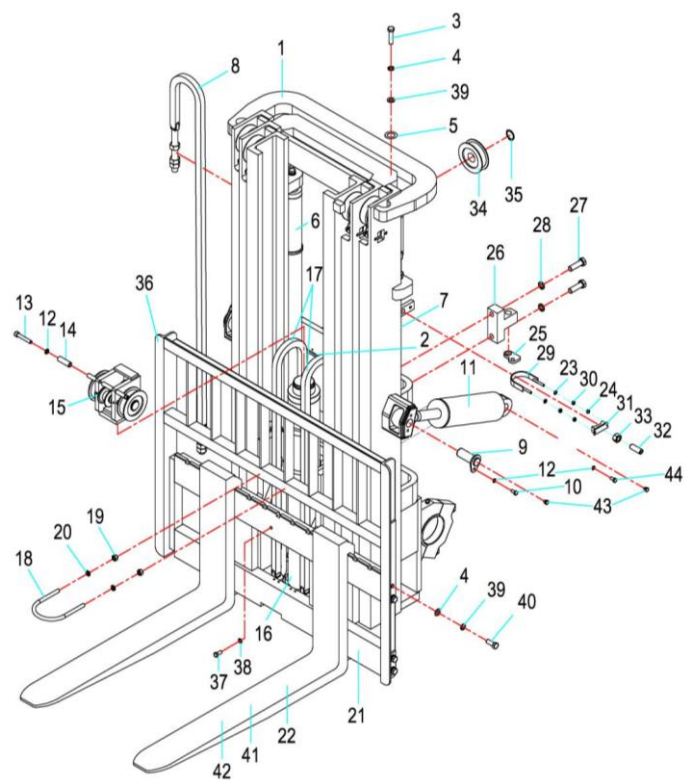
3 级全自由门架 TRIPLEX 4t-x5t



序号 Item	物料码 Part NO.	名称 Description	数量 Qty	备注或适用车型 Remarks Or Serial No.	原物料码 Original Part No.
1	见图 18 See Fig.18	门架 Mast	1	4t-4.5t	
1	见图 18 See Fig.18	门架 Mast	1	x5t	
2	见图 23 See Fig.23	油路系统 Mast piping	1	4t-4.5t	
2	见图 23 See Fig.23	油路系统 Mast piping	1	x5t	
3	300010050044	螺栓 M16×1.5×55 Bolt M16×1.5×55	2		G005785-016055-01
4	300030010004	垫圈 16 Washer 16	10		G000093-000016-00
5	209500270175	油缸调整垫圈 Ajust gasket	2		R45M300-000003-000
6	见图 21 See Fig.21	左升降油缸 Lift cylinder,Left	1	4t-4.5t	
6	见图 21 See Fig.21	左升降油缸 Lift cylinder,Left	1	x5t	
7	见图 21 See Fig.21	右升降油缸 Lift cylinder,Right	1	4t-4.5t	
7	见图 21 See Fig.21	右升降油缸 Lift cylinder,Right	1	x5t	
8	见图 17 See Fig.17	后链条总成 Chain assy	2	4t-4.5t, 左右升降油缸 Lifting cylinder,R/L	
8	见图 17 See Fig.17	后链条总成 Chain assy	2	x5t, 左右升降油缸 Lifting cylinder,R/L	
9	209500270174	销轴 Pin shaft	4		R45M300-001000-000
10	300010040005	螺栓 M10×20 Bolt M10×20	2		G005783-010020-00

图 16 起升组件  
Fig.16 Lifting part

3 级全自由门架 TRIPLEX 4t-x5t

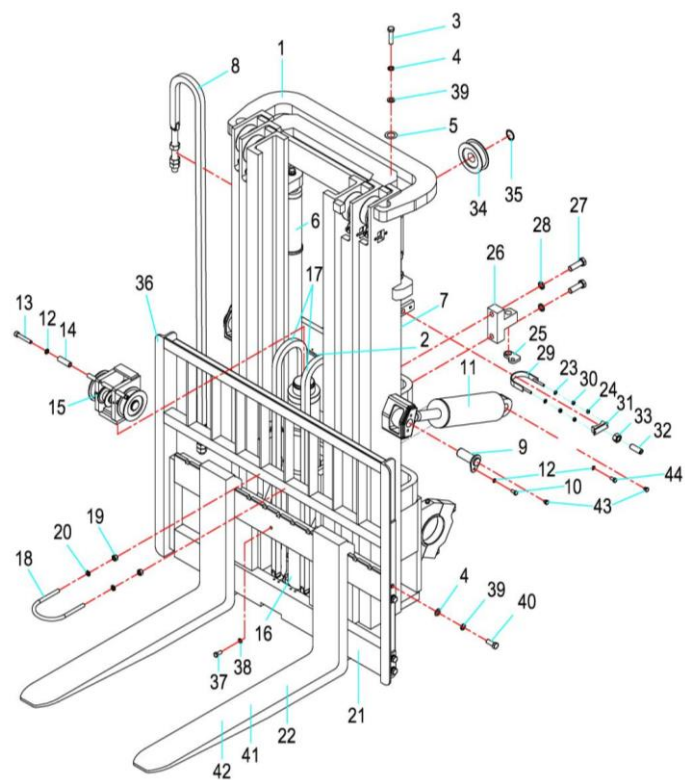


序号 Item	物料码 Part NO.	名称 Description	数量 Qty	备注或适用车型 Remarks Or Serial No.	原物料码 Original Part No.
11	见图 6 See Fig.6	倾斜油缸 Tilt cylinder	2		
12	300030010001	垫圈 10 Washer 10	4		G000093-000010-00
13	300040020174	螺钉 M10x70 Screw M10x70	1		G000070-010070-00
14	201100310045	套筒 Sleeve	2		2025N4.3-000004
15	209500170096	短缸固定螺栓 Bolt	1		4N4.5H-000001
13	300020010007	螺母 M14 Nut M14	2		G006170-000014-00
14	300030010003	垫圈 14 Washer 14	2		G000093-000014-00
15	见图 II See Fig. II	链条座组件 Chain seat assy	1	4t-4.5t	
16	见图 II See Fig. II	链条座组件 Chain seat assy	1	x5t	
17	见图 17 See Fig.17	前链条总成 Chain assy	2	4t-4.5t, 短升降油缸 Lifting cylinder, Short	
17	见图 17 See Fig.17	前链条总成 Chain assy	2	x5t, 短升降油缸 Lifting cylinder, Short	
18	209500170096	油缸固定螺栓 Bolt	2		4N4.5H-000001
19	300020010007	螺母 M14 Nut M14	2		G006170-000014-00
20	300030010003	垫圈 14 Washer 14	2		G000093-000014-00
21	209700001151	货叉架总成 Fork carriage assy	1	4t-4.5t 见图 19 / See Fig.19	XR45N450-300000-000



图 16 起升组件  
Fig.16 Lifting part

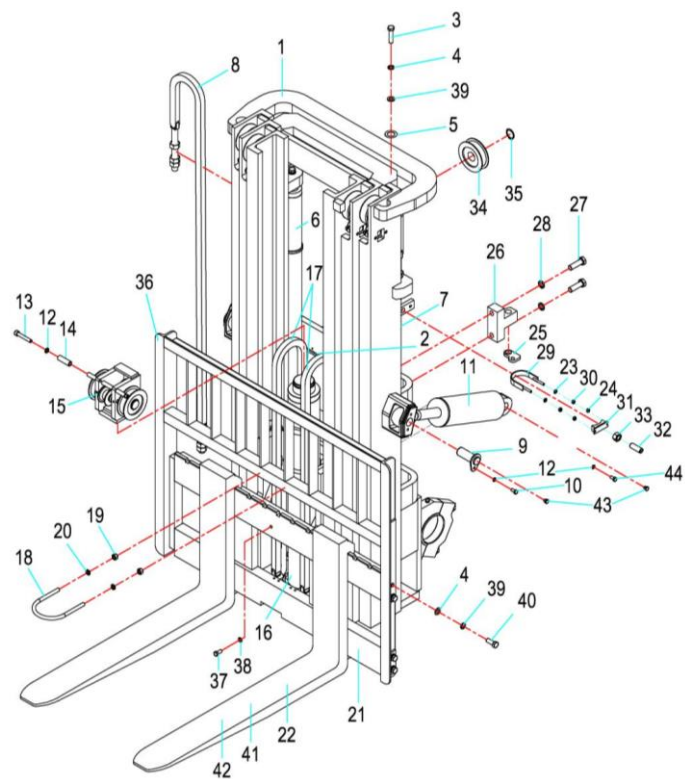
3 级全自由门架 TRIPLEX 4t-x5t



序号 Item	物料码 Part NO.	名称 Description	数量 Qty	备注或适用车型 Remarks Or Serial No.	原物料码 Original Part No.
21	209700001154	货叉架总成 Fork carriage assy	1	x5t 见图 19 / See Fig.19	XRX50N450-300000-000
21	见图 5 / See Fig.5	侧移架总成 Sidle carriage assy	1	4t-4.5t	
21	见图 5 / See Fig.5	侧移架总成 Sidle carriage assy	1	x5t	
22	见图 III / See Fig. III	货叉总成 Fork assembly	2	见图 III / See Fig. III	
23	300030040014	垫圈 8 Washer 8	4		G0097P1-000008-00
24	300020420002	盖型螺母 M8 Acorn nut M8	4		G000923-000008-00
25	209500270166	固定板 fixation plate	1		R45N450-000002-000
26	209500270606	链条支座 Chain seat	2		4N4.5F-000002
27	300010060091	螺栓 M20×1.5×65 Bolt M20×1.5×65	4		G005786-020065-01
28	300030010006	垫圈 20 Washer 20	4		G000093-000020-00
29	209500170020	油缸固定螺栓 Bolt	2	4t-4.5t	R45N450-000001-000
29	209500170097	油缸固定螺栓 Bolt	2	x5t	4M3H-000001
30	300020010016	螺母 M8 Nut M8	4		G006170-000008-00
31	209500270221	塞子 Plug	2		N30M300-000009-000
32	209500270167	螺钉 M20×45 Screw M20×45	2		R45N450-000003-000

图 16 起升组件  
Fig.16 Lifting part

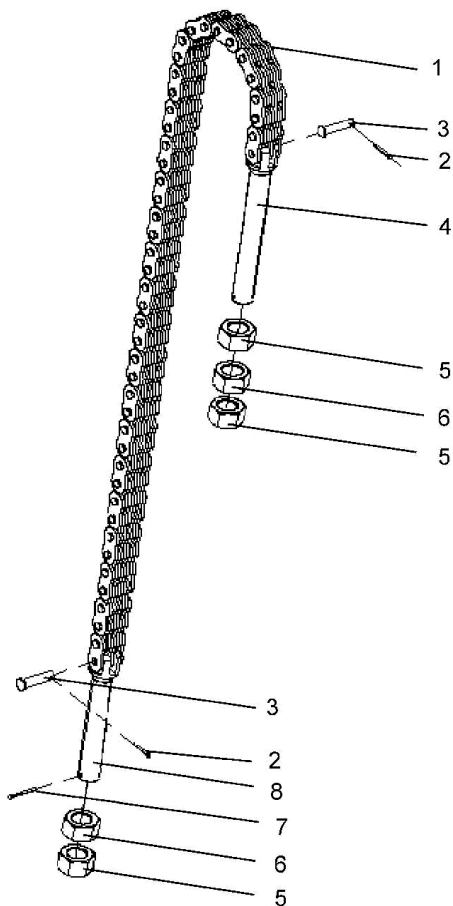
3 级全自由门架 TRIPLEX 4t-x5t



序号 Item	物料码 Part NO.	名称 Description	数量 Qty	备注或适用车型 Remarks Or Serial No.	原物料码 Original Part No.
33	300020010009	螺母 M20 Nut M20	2		G006170-000020-00
34	208850010014	链轮 Chain wheel	2	4t-4.5t	780408-G00
34	208850010007	链轮 Chain wheel	2	x5t	CW310-00-G00
35	300060030016	轴用弹性挡圈-A 型 40 Snap ring 40	2		G0894P1-000040-00
35	300060030018	轴用弹性挡圈-A 型 50 Snap ring 40	2		G0894P1-000050-00
36	209750000044	挡货架 Load bracket	1	4t-4.5t	R45M300-004000-000
36	209750000028	挡货架 Load bracket	1	x5t	RX50M300-002000-000
37	300010030033	螺钉 M12x25 Screw M12x25	1		G005782-012025-00
38	300030010002	垫圈 12 Washer 12	1		G000093-000012-00
39	300030040005	垫圈 16 Washer 16	10		G0097P1-000016-00
40	300010040070	螺栓 M16x40 Bolt M16x40	8		G005783-016040-00
41	见图Ⅲ See Fig.Ⅲ	货叉总成 Fork assembly	2		
42	见图Ⅲ See Fig.Ⅲ	货叉总成 Fork assembly	2		
43	300170040002	油杯 M10x1 Oil cup M10x1	4		G001152-010001-00
44	209500270217	螺栓 M10x1.25x20 Bolt M10x1.25x20	2		N30M300-004000-000

图 17 链条总成  
Fig.17 Chain assy

3 级全自由门架 TRIPLEX 4t-x5t



序号 Item	物料码 Part NO.	名称 Description	数量 Qty	备注或适用车型 Remarks Or Serial No.	原物料码 Original Part No.
A1	见选配表 10 See Optional Parts List 10	前链条总成 Chain assy	1	4t-4.5t, 短升降油缸 Lifting cylinder, Short	
A1	见选配表 10 See Optional Parts List 10	前链条总成 Chain assy	1	x5t, 短升降油缸 Lifting cylinder, Short	
A2	见选配表 10 See Optional Parts List 10	后链条总成 Chain assy	1	4t-4.5t, 左右升降油缸 Lifting cylinder, R/L	
A2	见选配表 10 See Optional Parts List 10	后链条总成 Chain assy	1	x5t, 左右升降油缸 Lifting cylinder, R/L	
1	NO PART NO.	链条 LH2023 Chain LH2023	1	4t-4.5t	
1	NO PART NO.	链条 LH1644 Chain LH1644	1	x5t	
2	300050010042	销 4x20 Pin 4x20	2		G000091-004020-00
3	NO PART NO.	销轴 Pin shaft	2		
4	NO PART NO.	链条接头 Connector	1	4t-4.5t	
4	NO PART NO.	链条接头 Connector	1	x5t	
5	209500200082	螺母 Nut	3		50M3A-800001
6	209500200083	球螺母 Nut	2		50M3A-800002
7	300050010013	销 2.5x28 Pin 2.5x28	1		G000091-2P5028-00
8	NO PART NO.	链条接头 Connector	1	4t-4.5t	
8	NO PART NO.	链条接头 Connector	1	x5t	

选配表 10 <Optional Parts List 10>

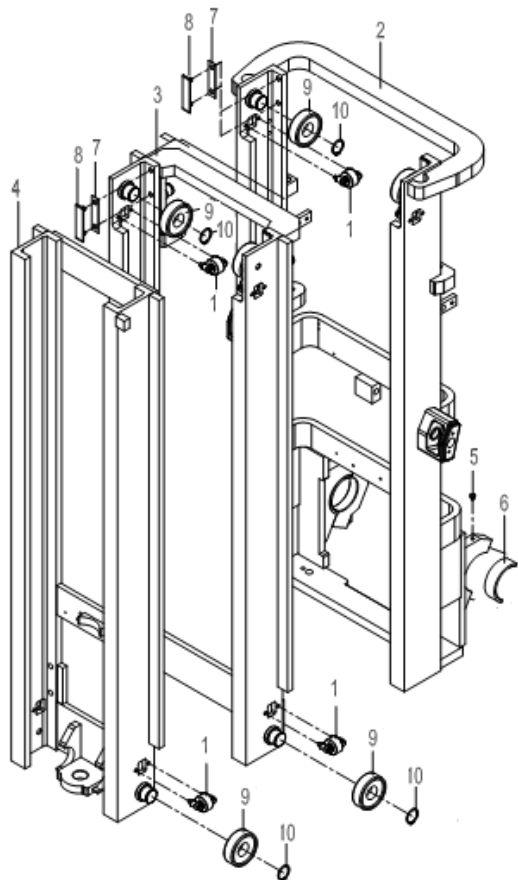
序号 Item No.	A1 (4t-4.5t)	A1(x5t)	A2 (4t-4.5t)	A2 (x5t)
起升高度 Lift Height	物料码 Part No.	物料码 Part No.	物料码 Part No.	物料码 Part No.
4000	209990000815	209500190048	209500191169	209500191324
4300	209990000815	209500190099	209500191155	209500191325
4500	209990000814	209500190125	204100070708	209500190044
4800	209500191165	209500190146	209500190117	209500190050
5000	209500191165	209500190146	209500191158	209500190031
5500	209500191166	209500191337	209500191159	209500191327
6000	209500191167	209500191339	209500191160	209500191343
6500	209500190170	209500191137	209500191161	209500191344
7000	209500191169	209990000959	209500191146	209500191345

选配表 10 <Optional Parts List 10>

序号 Item No.	A1 (4t-4.5t)	A1(x5t)	A2 (4t-4.5t)	A2 (x5t)
起升高度 Lift Height	原物料码 Original Part No.	原物料码 Original Part No.	原物料码 Original Part No.	原物料码 Original Part No.
4000	LH-2023043-100	LH-1644051-100	LH-2023059-100	LH-1644075-100
4300	LH-2023043-100	LH-1644053-100	LH-2023063-100	LH-1644079-100
4500	LH-2023045-100	LH-1644055-100	LH-2023065-100	LH-1644081-100
4800	LH-2023047-100	LH-1644057-100	LH-2023069-100	LH-1644085-100
5000	LH-2023047-100	LH-1644057-100	LH-2023071-100	LH-1644087-100
5500	LH-2023051-100	LH-1644061-100	LH-2023075-100	LH-1644095-100
6000	LH-2023053-100	LH-1644065-100	LH-2023083-100	LH-1644103-100
6500	LH-2023055-100	LH-1644067-100	LH-2023089-100	LH-1644111-100
7000	LH-2023059-100	LH-1644071-100	LH-2023093-100	LH-1644117-100

图 18 门架  
Fig. 18 Mast

3 级全自由门架 TRIPLEX 4t-x5t



序号 Item	物料码 Part NO.	名称 Description	数量 Qty	备注或适用车型 Remarks Or Serial No.	原物料码 Original Part No.
1	209500070022	侧滚轮组 Side rollers	8		4M3F-202000
2	见选配表 11 See Optional Parts List 11	外门架 Outer mast	1	4t-4.5t	
2	见选配表 11 See Optional Parts List 11	外门架 Outer mast	1	x5t	
3	见选配表 11 See Optional Parts List 11	中门架 Middle mast	1	4t-4.5t	
3	见选配表 11 See Optional Parts List 11	中门架 Middle mast	1	x5t	
4	见选配表 11 See Optional Parts List 11	内门架 Inner mast	1	4t-4.5t	
4	见选配表 11 See Optional Parts List 11	内门架 Inner mast	1	x5t	
5	300170040002	油杯 M10×1 Oil cup M10×1	2		G001152-010001-00
6	209500220002	轴瓦 Bearing liner	2		R45M300-000002-000
7	209500270168	导轨衬垫 Rubber cover	4		R45M300-000006-000
8	209500270172	调整垫片 Adjusting shim	4		R45M300-000007-000
9	209990000405	起升滚轮 Roller	8		10310D-G00
10	300060030018	轴用弹性挡圈-A 型 50 Snap ring 50	8		G0894P1-000050-00

选配表 11 <Optional Parts List 11>

序号 Item No.	1 (4t-4.5t) 外门架 Outer mast	1 (x5t) 外门架 Outer mast	2 (4t-4.5t) 中门架 Middle mast
起升高度 Lift Height	物料码 Part No.	物料码 Part No.	物料码 Part No.
4000	209550000664	209550000783	209600000118
4300	209550000665	209550000784	209600000119
4500	209550011056	209550000445	209600000067
4800	209550000667	209550000785	209600000121
5000	209550000668	209550000786	209600000122
5500	209550000669	209550000787	209600000123
6000	209550000670	209550000788	209600000124
6500	209550000671	209550000789	209600000125
7000	209550000672	209550000790	209600000126

序号 Item No.	2 (x5t) 中门架 Middle mast	3 (4t-4.5t) 内门架 Inner mast	3 (x5t) 内门架 Inner mast
起升高度 Lift Height	物料码 Part No.	物料码 Part No.	物料码 Part No.
4000	209600000158	209650000641	209650000783
4300	209600000159	209650000642	209650000784
4500	209600000070	209650000417	209650000421
4800	209600000160	209650000644	209650000785
5000	209600000161	209650000645	209650000786
5500	209600000162	209650000646	209650000787
6000	209600000163	209650000647	209650000788
6500	209600000164	209650000648	209650000789
7000	209600000165	209650000649	209650000790

选配表 11 <Optional Parts List 11>

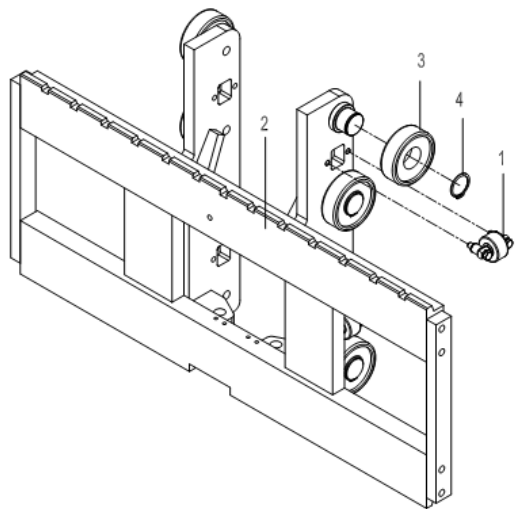
序号 Item No.	1 (4t-4.5t) 外门架 Outer mast	1 (x5t) 外门架 Outer mast	2 (4t-4.5t) 中门架 Middle mast
起升高度 Lift Height	原物料码 Original Part No.	原物料码 Original Part No.	原物料码 Original Part No.
4000	XR45N400-101000-000	XRX50N400-101000-000	XR45N400-102000-000
4300	XR45N430-101000-000	XRX50N430-101000-000	XR45N430-102000-000
4500	XR45N450-101000-000	XRX50N450-101000-000	XR45N450-102000-000
4800	XR45N480-101000-000	XRX50N480-101000-000	XR45N480-102000-000
5000	XR45N500-101000-000	XRX50N500-101000-000	XR45N500-102000-000
5500	XR45N550-101000-000	XRX50N550-101000-000	XR45N550-102000-000
6000	XR45N600-101000-000	XRX50N600-101000-000	XR45N600-102000-000
6500	XR45N650-101000-000	XRX50N650-101000-000	XR45N650-102000-000
7000	XR45N700-101000-000	XRX50N700-101000-000	XR45N700-102000-000

序号 Item No.	2 (x5t) 中门架 Middle mast	3 (4t-4.5t) 内门架 Inner mast	3 (x5t) 内门架 Inner mast
起升高度 Lift Height	原物料码 Original Part No.	原物料码 Original Part No.	原物料码 Original Part No.
4000	XRX50N400-102000-000	XR45N400-103000-000	XRX50N400-103000-000
4300	XRX50N430-102000-000	XR45N430-103000-000	XRX50N430-103000-000
4500	XRX50N450-102000-000	XR45N450-103000-000	XRX50N450-103000-000
4800	XRX50N480-102000-000	XR45N480-103000-000	XRX50N480-103000-000
5000	XRX50N500-102000-000	XR45N500-103000-000	XRX50N500-103000-000
5500	XRX50N550-102000-000	XR45N550-103000-000	XRX50N550-103000-000
6000	XRX50N600-102000-000	XR45N600-103000-000	XRX50N600-103000-000
6500	XRX50N650-102000-000	XR45N650-103000-000	XRX50N650-103000-000
7000	XRX50N700-102000-000	XR45N700-103000-000	XRX50N700-103000-000



图 19 货叉架总成  
Fig.19 Fork carriage assy

3 级全自由门架 TRIPLEX 4t-x5t



序号 Item	物料码 Part NO.	名称 Description	数量 Qty	备注或适用车型 Remarks Or Serial No.	原物料码 Original Part No.
A1	209700001151	货叉架总成 Fork carriage assy	1	4t-4.5t	XR45N450-300000-000
A2	209700001154	货叉架总成 Fork carriage assy	1	x5t	XRX50N450-300000-000
1	209500070014	侧滚轮组 Side rollers	2	见图 I / See Fig.I	R45N450-302000-000
2	209700001117	货叉架体 Fork carriage	1	4t-4.5t	XR45N450-301000-000
2	209700011221	货叉架体 Fork carriage	1	x5t	XRX50N450-301000-000
3	209990000405	起升滚轮 Roller	6		10310D-G00
4	300060030018	轴用弹性挡圈-A 型 50 Snap ring 50	6		G0894P1-000050-00

图 20 侧移油缸  
Fig.20 Side cylinder

4t-x5t 2 级宽视野门架 2 级全自由门架 3 级全自由门架  
4t-x5t SIMPLEX DUPLEX TRIPLEX

序号 Item	物料码 Part NO.	名称 Description	数量 Qty	备注或适用车型 Remarks Or Serial No.	原物料码 Original Part No.
A1	20980000423	侧移油缸 Side cylinder	1	包含/INC:1-13	R45V450-303000-000
1	300050010046	销 4×35 Pin 4×35	1		G000091-004035-00
2	207900070041	六角槽形螺母 Nut	1		3-22-00-02
3	209800090201	活塞环 Piston ring	2		R45V450-303001-000
4	209800050048	活塞 Piston	1		R45V450-303002-000
5	209800010317	油缸体 Cylinder body	1		R45V450-303100-000
6	209800020213	活塞杆 Piston rod	1		R45V450-303200-000
7	205100040015	复合衬套 2530 Combination bush	1		SF-1-2530-G00
8	209800030032	导向套 Guide sleeve	1		R45V450-303003-000
9	300130010161	O 形密封圈 65×3.5 O-ring 65×3.5	1		G001235-006503P5-00
10	204100070367	CKS 密封圈 d25 CKS-seal ring d25	1		CKS-025-G00
11	300130010071	O 形密封圈 68×3.1 O-ring 68×3.1	1		G001235-006803P1-00
12	204100070366	CKG 密封圈 d25 CKG-seal ring d25	1		CKG-025-G00
13	204100070368	CK 防尘圈 d25 CK-dustproof ring	1		CK-025-G00
K1	820020000033	密封件维修包 Seal kit of side shifter cylinder	1	包含/INC:9-13	R45V450-303-000-KIT

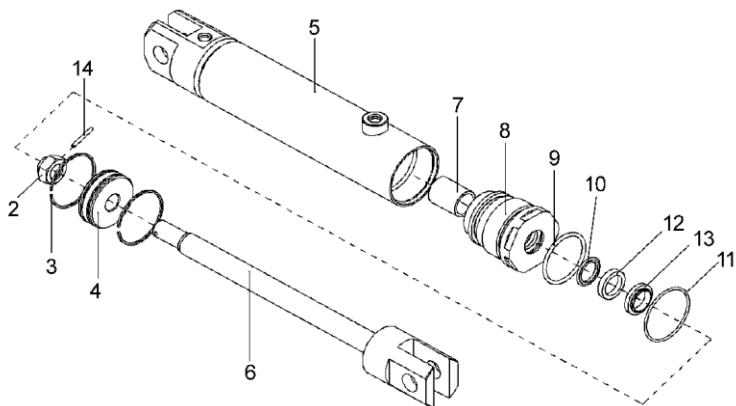
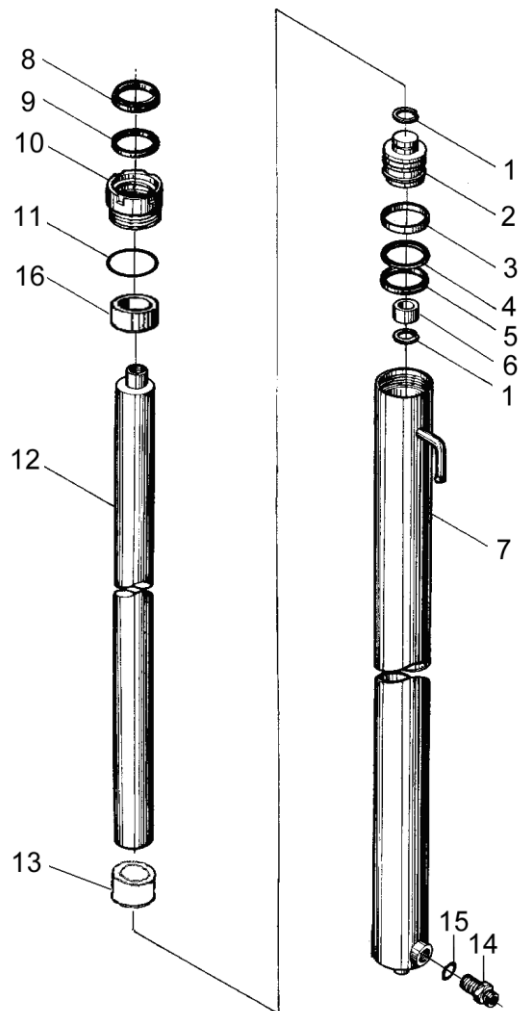


图 21 左右升降油缸  
Fig.21 Lift cylinder, right & left

3 级全自由门架 TRIPLEX 4t-x5t

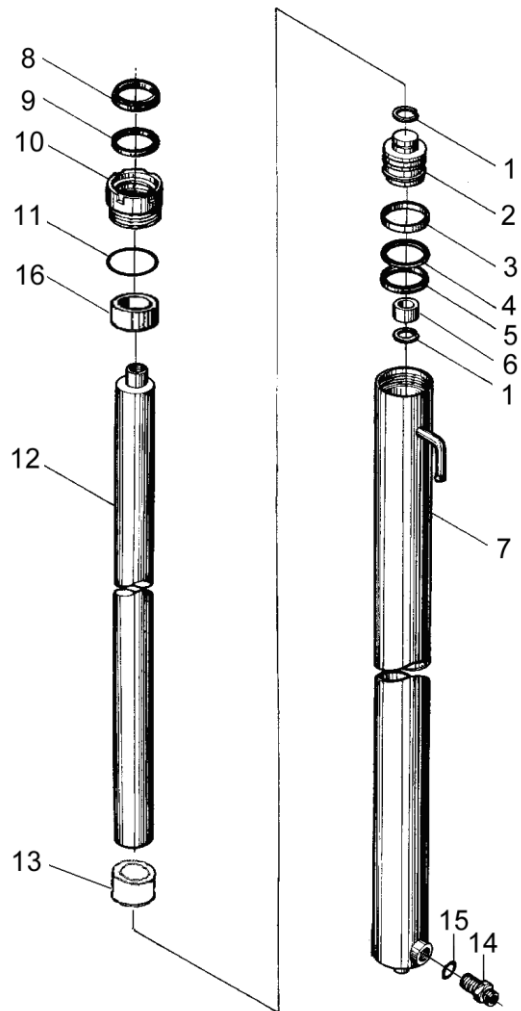


序号 Item	物料码 Part NO.	名称 Description	数量 Qty	备注或适用车型 Remarks Or Serial No.	原物料码 Original Part No.
A1	见选配表 12 See Optional Parts List 12	右升降油缸 Lift cylinder,Right	1	4t-4.5t, INC:1-13,16	
A1	见选配表 12 See Optional Parts List 12	右升降油缸 Lift cylinder,Right	1	x5t, INC:1-13,16	
A2	见选配表 12 See Optional Parts List 12	左升降油缸 Lift cylinder,Left	1	4t-4.5t, INC:1-16	
A2	见选配表 12 See Optional Parts List 12	左升降油缸 Lift cylinder,Left	1	x5t, INC:1-16	
1	300060050005	孔用钢丝挡圈 30 Snap shim 30	4		G0895P1-000030-00
2	209800050051	活塞 Piston	2	4t-4.5t	R45M300-500003-W00
2	209800050032	活塞 Piston	2	x5t	RX50M300-500003-W00
3	209800090231	支承圈 Support ring 65×60×25	2	4t-4.5t	R45M300-500004-W00
3	209800090170	支承圈 Support ring 70×65×25	2	x5t	RX50M300-500004-W00
4	209800090226	保护圈 65×55×3 Ring 65×55×3	2	4t-4.5t	R45M300-500005-W00
4	209800090168	保护圈 70×60×3 Ring 70×60×3	2	x5t	RX50M300-500005-W00
5	209990000026	OSI 密封圈 D65 OSI-seal ring D65	2	4t-4.5t	FU0807L0-02-G00
5	209990000162	OSI 密封圈 D70 OSI-seal ring D70	2	x5t	FU0846L0-G00
6	209800080036	隔套 Spacer bush	2		N35M300-400006-W00

注：序号 1,2,12, 组装后为不可拆分整体, 用户订购时应订购整个组合件。  
Notice: No. 1,2,12, after the assy, it's a whole, also, when user order.

图 21 左右升降油缸  
Fig.21 Lift cylinder, right& left

3 级全自由门架 TRIPLEX 4t-x5t

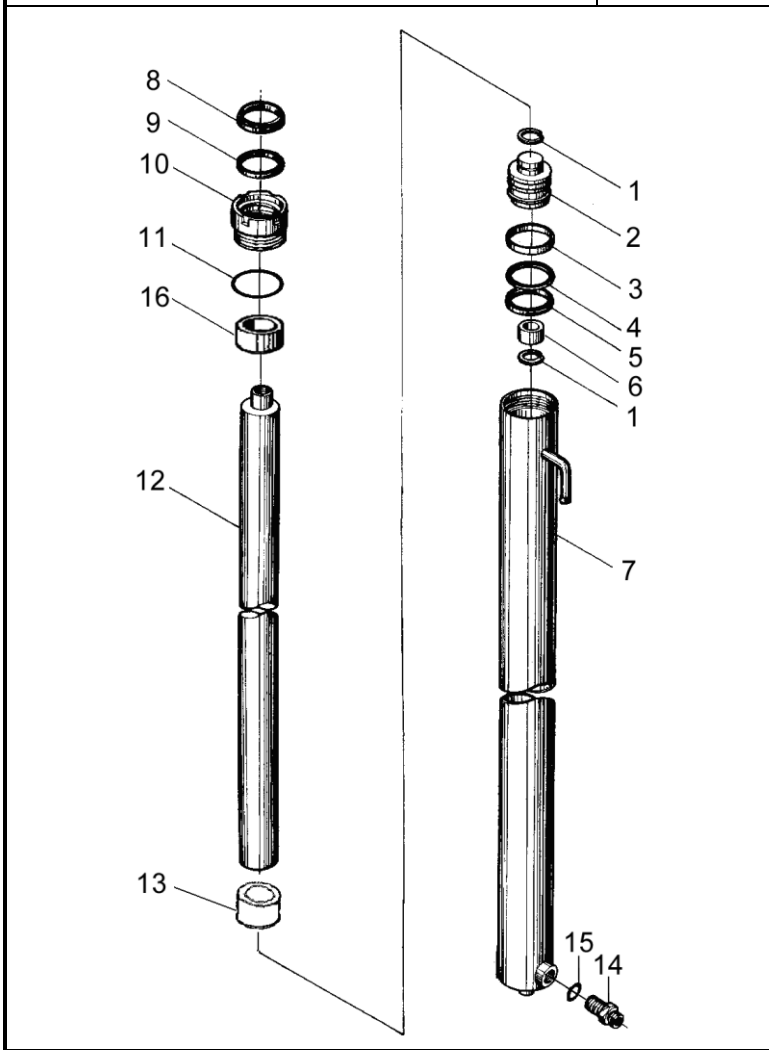


序号 Item	物料码 Part NO.	名称 Description	数量 Qty	备注或适用车型 Remarks Or Serial No.	原物料码 Original Part No.
7	见选配表 12 See Optional Parts List 12	右缸体 Cylinder body,Right	1	4t-4.5t	
7	见选配表 12 See Optional Parts List 12	右缸体 Cylinder body,Right	1	x5t	
7	见选配表 12 See Optional Parts List 12	左缸体 Cylinder body,Left	1	4t-4.5t	
7	见选配表 12 See Optional Parts List 12	左缸体 Cylinder body,Left	1	x5t	
8	204100070378	DKI 防尘圈 d50 DKI-dustproof ring	2		FD2831A0-G00
9	204100070391	ISI 密封圈 d50 ISI-seal ring d50	2		FU0619K0-G00
10	209800030037	导向套 Guide sleeve	2	4t-4.5t	R45M300-500002-W00
10	209800030024	导向套 Guide sleeve	2	x5t	RX50M300-500002-W00
11	300130010131	O 形密封圈 70x3.1 O-ring 70x3.1	2	4t-4.5t	G001235-007003P1-00
11	300130010122	O 形密封圈 75x3.1 O-ring 75x3.1	2	x5t	G001235-007503P1-00
12	见选配表 12 See Optional Parts List 12	活塞杆 Piston rod	1		
13	见选配表 12 See Optional Parts List 12	隔套 Spacer bush	1		
14	209800080022	油嘴组件 Nozzle valve assy	1	4t-4.5t 右升降油缸 Lift cylinder, Right	R45M300-402000-W00
14	209800080019	油嘴组件 Nozzle valve assy	1	x5t 右升降油缸 Lift cylinder, Right	RX50M300-502000-W00

注：序号 1,2,12, 组装后为不可拆分整体, 用户订购时应订购整个组合件。  
Notice: No. 1,2,12, after the assy, it's a whole, also, when user order.

图 21 左右升降油缸  
Fig.21 Lift cylinder, right & left

3 级全自由门架 TRIPLEX 4t-x5t



序号 Item	物料码 Part NO.	名称 Description	数量 Qty	备注或适用车型 Remarks Or Serial No.	原物料码 Original Part No.
15	206300020009	O 形密封圈 P18 O-ring P18	1	右升降油缸 Lift cylinder, Right	JISB2401-P18-G00
16	205100040032	复合衬套 5050 Bushing	2		SF-1-5050-G00
K1	820020000024	左右缸修理包 Lift cylinder- kit	1	INC:5,8,9,11,15 For (4t-4.5t)	R45M300-4/5-001-Kit
K1	820020000025	左右缸修理包 Lift cylinder- kit	1	INC:5,8,9,11,15 For x5t	RX50M300-4/5-100-Kit

注：序号 1,2,12, 组装后为不可拆分整体, 用户订购时应订购整个组合件。  
Notice: No. 1,2,12, after the assy, it's a whole, also, when user order.

选配表 12 <Optional Parts List 12> (4t-4.5t)

序号 Item No.	A1 右升降油缸 Lift cylinder,Right	A2 左升降油缸 Lift cylinder,Left	7 右缸体 Cylinder body,Right	7 左缸体 Cylinder body,Left	12 活塞杆 Piston rod	13 隔套 Sheath
起升高度 Lift Height	物料码 Part No.	物料码 Part No.	物料码 Part No.	物料码 Part No.	物料码 Part No.	物料码 Part No.
4000	209800002444	209800002453	209800012105	209800012114	209800021660	Without part 16
4300	209800002445	209800002454	209800012106	209800012115	209800021661	Without part 16
4500	209800000154	209800000155	209800010084	209800010085	209800020237	Without part 16
4800	209800002447	209800002456	209800012108	209800012117	209800021662	Without part 16
5000	209800002448	209800002457	209800012109	209800012118	209800021663	Without part 16
5500	209800002449	209800002458	209800012110	209800012119	209800021664	Without part 16
6000	209800002847	209800002848	209800012522	209800012523	209800021665	209800090964
6500	209800002451	209800002460	209800012112	209800012121	209800021666	209800090916
7000	209800002452	209800002461	209800012113	209800012122	209800021667	209800090917

选配表 12 <Optional Parts List 12> (4t-4.5t)

序号 Item No.	A1 右升降油缸 Lift cylinder,Right	A2 左升降油缸 Lift cylinder,Left	7 右缸体 Cylinder body,Right	7 左缸体 Cylinder body,Left	12 活塞杆 Piston rod	13 隔套 Sheath
起升高度 Lift Height	原物料码 Original Part No.	原物料码 Original Part No.	原物料码 Original Part No.	原物料码 Original Part No.	原物料码 Original Part No.	原物料码 Original Part No.
4000	XR45N400-400000-000	XR45N400-500000-000	XR45N400-401000-W00	XR45N400-501000-W00	XR45N400-500001-W00	Without part 16
4300	XR45N430-400000-000	XR45N430-500000-000	XR45N430-401000-W00	XR45N430-501000-W00	XR45N430-500001-W00	Without part 16
4500	XR45M300-400000-000	XR45M300-500000-000	XR45M300-401000-W00	XR45M300-501000-W00	R45M300-500001-W00	Without part 16
4800	XR45N480-400000-000	XR45N480-500000-000	XR45N480-401000-W00	XR45N480-501000-W00	XR45N480-500001-W00	Without part 16
5000	XR45N500-400000-000	XR45N500-500000-000	XR45N500-401000-W00	XR45N500-501000-W00	XR45N500-500001-W00	Without part 16
5500	XR45N550-400000-000	XR45N550-500000-000	XR45N550-401000-W00	XR45N550-501000-W00	XR45N550-500001-W00	Without part 16
6000	XR45N600-400000-000	XR45N600-500000-000	XR45N600-401000-W00	XR45N600-501000-W00	XR45N600-500001-W00	XR45N600-400002-W00
6500	XR45N650-400000-000	XR45N650-500000-000	XR45N650-401000-W00	XR45N650-501000-W00	XR45N650-500001-W00	XR45N650-400002-W00
7000	XR45N700-400000-000	XR45N700-500000-000	XR45N700-401000-W00	XR45N700-501000-W00	XR45N700-500001-W00	XR45N700-400002-W00

选配表 12 <Optional Parts List 12> (x5t)

序 号 Item No.	A1 右升降油缸 Lift cylinder,Right	A2 左升降油缸 Lift cylinder,Left	7 右缸体 Cylinder body,Right	7 左缸体 Cylinder body,Left	12 活塞杆 Piston rod	13 隔套 Sheath
起升高度 Lift Height	物料码 Part No.	物料码 Part No.	物料码 Part No.	物料码 Part No.	物料码 Part No.	物料码 Part No.
4000	209800002849	209800002857	209800012524	209800012532	209800021660	Without part 16
4300	209800002850	209800002858	209800012525	209800012533	209800021661	Without part 16
4500	209800000150	209800000151	209800010081	209800010082	209800020237	Without part 16
4800	209800002851	209800002859	209800012526	209800012534	209800021662	Without part 16
5000	209800002852	209800002860	209800012527	209800012535	209800021663	Without part 16
5500	209800002853	209800002861	209800012528	209800012536	209800021664	Without part 16
6000	209800002854	209800002862	209800012529	209800012537	209800021665	209800090967
6500	209800002855	209800002863	209800012530	209800012538	209800021666	209800090961
7000	209800002856	209800002864	209800012531	209800012539	209800021667	209800090962



选配表 12 <Optional Parts List 12> (x5t)

序号 Item No.	A1 右升降油缸 Lift cylinder,Right	A2 左升降油缸 Lift cylinder,Left	7 右缸体 Cylinder body,Right	7 左缸体 Cylinder body,Left	12 活塞杆 Piston rod	13 隔套 Sheath
起升高度 Lift Height	原物料码 Original Part No.	原物料码 Original Part No.	原物料码 Original Part No.	原物料码 Original Part No.	原物料码 Original Part No.	原物料码 Original Part No.
4000	XR50N400-400000-000	XR50N400-500000-000	XR50N400-401000-W00	XR50N400-501000-W00	XR45N400-500001-W00	Without part 16
4300	XR50N430-400000-000	XR50N430-500000-000	XR50N430-401000-W00	XR50N430-501000-W00	XR45N430-500001-W00	Without part 16
4500	XR50M300-400000-000	XR50M300-500000-000	XR50M300-401000-W00	XR50M300-501000-W00	R45M300-500001-W00	Without part 16
4800	XR50N480-400000-000	XR50N480-500000-000	XR50N480-401000-W00	XR50N480-501000-W00	XR45N480-500001-W00	Without part 16
5000	XR50N500-400000-000	XR50N500-500000-000	XR50N500-401000-W00	XR50N500-501000-W00	XR45N500-500001-W00	Without part 16
5500	XR50N550-400000-000	XR50N550-500000-000	XR50N550-401000-W00	XR50N550-501000-W00	XR45N550-500001-W00	Without part 16
6000	XR50N600-400000-000	XR50N600-500000-000	XR50N600-401000-W00	XR50N600-501000-W00	XR45N600-500001-W00	XR50N600-400001-W00
6500	XR50N650-400000-000	XR50N650-500000-000	XR50N650-401000-W00	XR50N650-501000-W00	XR45N650-500001-W00	XR50N650-400001-W00
7000	XR50N700-400000-000	XR50N700-500000-000	XR50N700-401000-W00	XR50N700-501000-W00	XR45N700-500001-W00	XR50N700-400001-W00

图 22 短升降油缸  
Fig.22 Lift cylinder,Short

3 级全自由门架 TRIPLEX 4t-x5t

序号 Item	物料码 Part NO.	名称 Description	数量 Qty	备注或适用车型 Remarks Or Serial No.	原物料码 Original Part No.
A1	见选配表 13 See Optional Parts List 13	短升降油缸 Lift cylinder,Short	1		
1	见选配表 13 See Optional Parts List 13	活塞杆 Piston rod	1		
2	209990000134	LBH 防尘圈 d90 LBH-dustproof ring	1		CL0149C0-G00
3	204100070397	ISI 密封圈 d90 ISI-seal ring d90	1		FU1024K0-G00
4	209800030036	导向套 Guide sleeve	1		R45N450-400002-W00
5	300130010069	O 形密封圈 115x3.1 O-ring 115x3.1	1		G001235-011503P1-00
6	205100040037	复合衬套 9050 Combination bush	1		SF-1-9050-G00
7	300130010098	O 形密封圈 8x1.9 O-ring 8x1.9	1		G001235-000801P9-00
8	209800090220	放气螺塞 Air bleeder plug	1		R45N450-400003-W00
9	见选配表 13 See Optional Parts List 13	缸体 Cylinder body	1		
10	209850070489	油管 Oil pipe	1		R45N450-400004-W00
11	209800050050	活塞 Piston	1		R45N450-400005-W00
12	209500270165	钢丝挡圈 $\phi 4$ Steel-wire snap ring	1		R45N450-400006-W00
13	209800090218	阀套 Valve bush	1		R45N450-400007-W00
14	209800090219	阀芯 Spool	1		R45N450-400008-W00

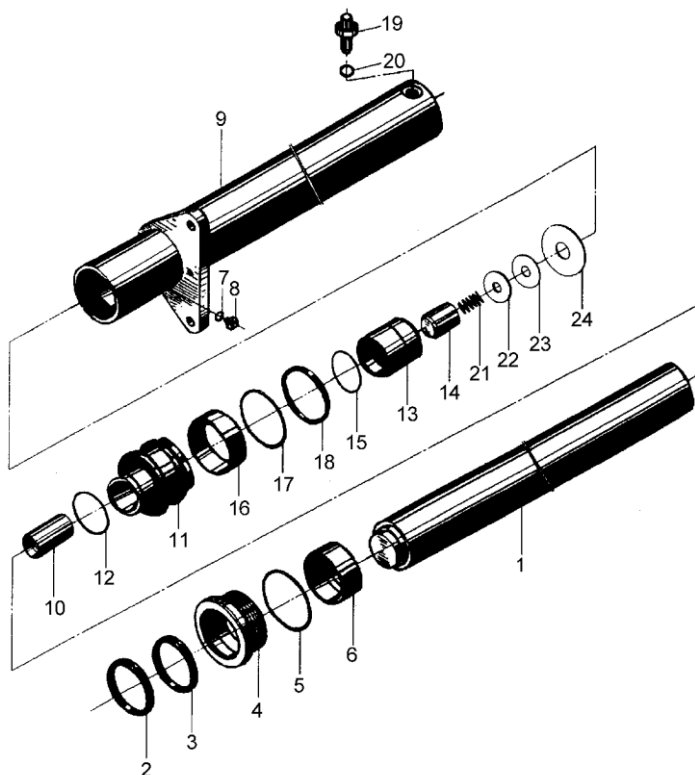
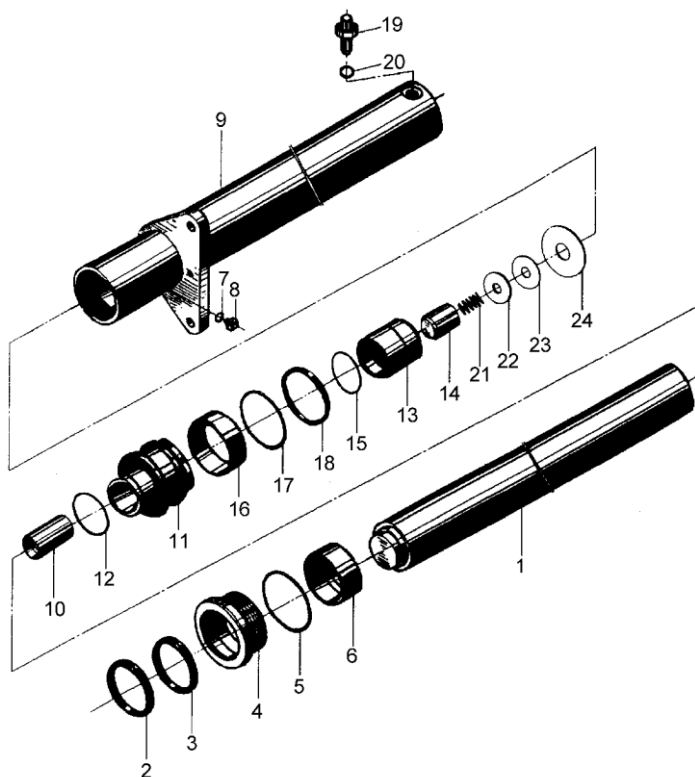


图 22 短升降油缸  
Fig.22 Lift cylinder,Short

3 级全自由门架 TRIPLEX 4t-x5t

序号 Item	物料码 Part NO.	名称 Description	数量 Qty	备注或适用车型 Remarks Or Serial No.	原物料码 Original Part No.
15	300130010090	O 形密封圈 26x2.4 O-ring 26x2.4	1		G001235-002602P4-00
16	209800090223	支承环 110x105x20 Ring110x105x20	1		R45N450-400009-W00
17	209800090216	保护圈 110x95x3 Protection ring	1		R45N450-400010-W00
18	209990000152	OSI 密封圈 D110 OSI-seal ring D110	1		FU1152L0-G00
19	209800080021	油嘴组件 Nozzle valve assy	1		R45N450-403000-W00
20	300130010041	O 形密封圈 22.4x3.55 O-ring 22.4x3.5	1		GT34521-22P43P55-00
21	209800090217	弹簧 Spring	1		R45N450-400011-W00
22	209800010349	挡板 Guard	1		R45N450-400012-W00
23	300060010003	挡圈 18 Snap ring 18	1		G0893P1-000018-00
24	300060010023	挡圈 28 Snap ring 28	1		G0893P1-000028-00
K1	820020000029	短缸修理包 Lift cylinder-kit	1	INC:2,3,5,7,15,18,20	R45U275-6-001-Kit



选配表 13 <Optional Parts List 13> (4t-x5t)

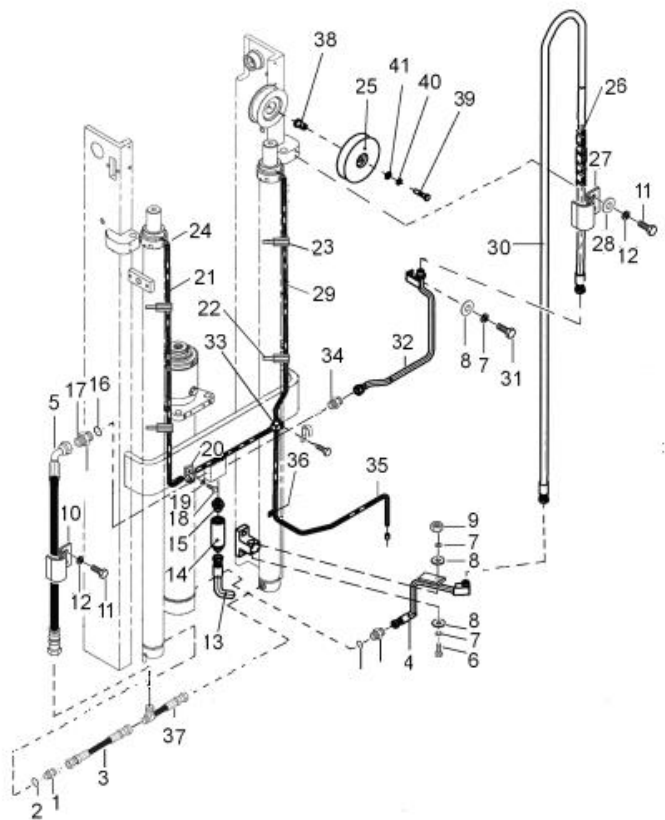
序号 Item No.	A1	1	9
起升高度 Lift Height	物料码 Part No	物料码 Part No.	物料码 Part No.
4000	209800002462	209800021374	209800012096
4300	209800002463	209800021375	209800012097
4500	209800000450	209800020233	209800010351
4800	209800002466	209800021377	209800012099
5000	209800002467	209800021378	209800012100
5500	209800002468	209800021379	209800012101
6000	209800002469	209800021380	209800012102
6500	209800002470	209800021381	209800012103
7000	209800002471	209800021382	209800012104

选配表 13 <Optional Parts List 13> (4t-x5t)

序号 Item No.	A1	1	9
起升高度 Lift Height	原物料码 Original Part No.	原物料码 Original Part No.	原物料码 Original Part No.
4000	R45N400-700000-001	R45N400-400001-W00	R45N400-703000-W00
4300	R45N430-700000-001	R45N430-400001-W00	R45N430-703000-W00
4500	R45N450-400000-001	R45N450-400001-W00	R45N450-402000-W00
4800	R45N480-700000-001	R45N480-400001-W00	R45N480-703000-W00
5000	R45N500-700000-001	R45N500-400001-W00	R45N500-703000-W00
5500	R45N550-700000-001	R45N550-400001-W00	R45N550-703000-W00
6000	R45N600-700000-001	R45N600-400001-W00	R45N600-703000-W00
6500	R45N650-700000-001	R45N650-400001-W00	R45N650-703000-W00
7000	R45N700-700000-001	R45N700-400001-W00	R45N700-703000-W00

图 23 油路系统  
Fig.23 Mast piping

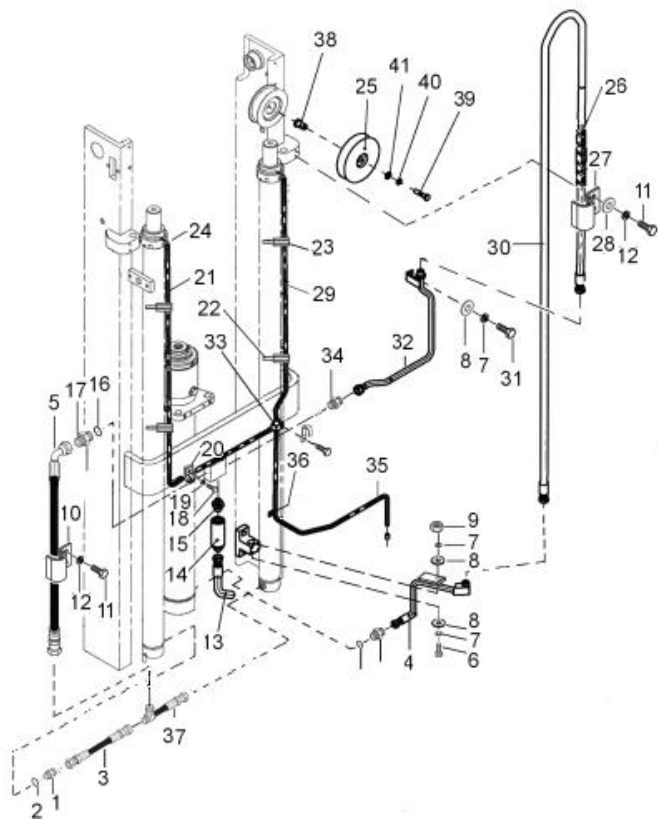
3 级全自由门架 TRIPLEX 4t-x5t



序号 Item	物料码 Part No.	名称 Description	数量 Qty	备注或适用车型 Remarks Or Serial No.	原物料码 Original Part No.
1	209850060208	直通过接头 Nipple	3		N30N450-200003-000
2	300030140016	垫圈 22 Washer 22	3		J000982-000022-00
3	209850060645	胶管接头 Connector	1		JGG-13A00305A0-000
4	209850060752	硬管接头 Connector	1		XR45N450-201000-000
5	209850030453	胶管接头 Connector	1		R45N450-200012-000
6	300040020076	螺钉 M10x40 Bolt M10x40	1		G000070-010040-00
7	300030010001	垫圈 10 Washer 10	2		G000093-000010-00
8	300030040002	垫圈 10 Washer 10	2		G0097P1-000010-00
9	300020010006	螺母 M10 Nut M10	1		G006170-000010-00
10	209850080112	管夹 Clip	1		2.5N4.5H-200010
11	300010040169	螺栓 M8x16 Bolt M8x16	3		G005783-008016-00
12	300030010015	垫圈 8 Washer 8	3		G000093-000008-00
13	209850060646	胶管接头 Connector	1		JGG-16A00800Z1-000
14	209850010004	限速阀 Speed limiting valve	1		R45N450-204000-000
15	209850060398	直通过接头 Nipple	1		4N4.5H-200014

图 23 油路系统  
Fig.23 Mast piping

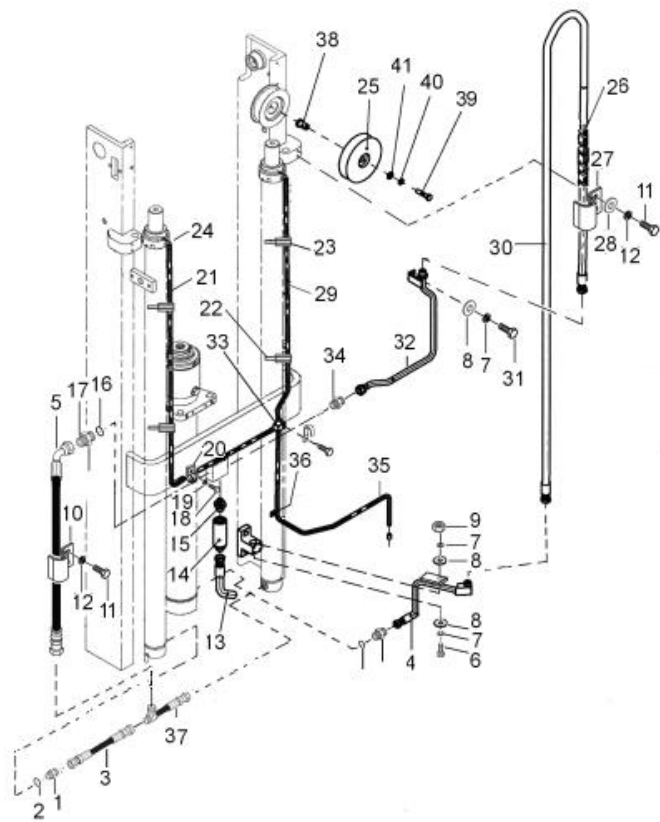
3 级全自由门架 TRIPLEX 4t-x5t



序号 Item	物料码 Part No.	名称 Description	数量 Qty	备注或适用车型 Remarks Or Serial No.	原物料码 Original Part No.
16	300030140008	垫圈 27 Washer 27	4		J000982-000027-00
17	209850060755	直通接头 Nipple	1		XR45N450-200001-000
18	300010020019	螺栓 M6×12 Bolt M6×12	2		G005781-006012-00
19	300030010014	垫圈 6 Washer 6	2		G000093-000006-00
20	209850080106	长管夹 Clip	1		3M3H-700014
21	见选配表 14 See Optional Parts List 14	回油管 Return oil pipe	1		
22	209850090299	镶边 Band	4		N30M300-700002-000
23	209990000574	通用尼龙扎带 Clamp-band	4		GT-3001-G00
24	300290010007	喉箍 20 Hose clamps 20			JT08870-0200000000-00
25	209850050058	滑轮 Pulley wheel	1		4N4.5H-200004A
26	209850090513	护套(φ17×1) Nylon sleeve	1		4N4.5L*200014
27	209850080130	管夹 Clip	1		XR45N450-200002-000
28	300030040014	垫圈 8 Washer 8	1		G0097P1-000008-00
29	见选配表 14 See Optional Parts List 1	回油管 Return oil pipe	1		
30	见选配表 14 See Optional Parts List	胶管接头 Hose	1		

图 23 油路系统  
Fig.23 Mast piping

3 级全自由门架 TRIPLEX 4t-x5t



序号 Item	物料码 Part No.	名称 Description	数量 Qty	备注或适用车型 Remarks Or Serial No.	原物料码 Original Part No.
31	300010040004	螺栓 M10×16 Bolt M10×16	1		G005783-010016-00
32	209850040744	钢管 Pipe	1		XR45N450-202000-000
33	209850090298	三通接头 Tee joint	1		N30M300-700005-000
34	209850060361	直通接头 Nipple	1		50U2.5-800002
35	209850040772	回油管 Return oil pipe	1		JGD-095A01460-000
36	209850080057	管夹 Clip	1		N30M300-700006-000
37	209850070485	连接硬管 Connector	1		R45N450-203000-000
38	202100040041	轴套 Shaft sleeve	1	4t-4.5t	40N4.5-200006
38	209850090336	轴套 Shaft sleeve	1	x5t	H50N450-200003-000
39	300010030073	螺栓 M16×60 Bolt M16×60	1		G005782-016060-00
40	300030010004	垫圈 16 Washer 16	1		G000093-000016-00
41	300030040005	垫圈 16 Washer 16	1		G0097P1-000016-00



选配表 14 <Optional Parts List 14> (4t-x5t)

序号 Item No.	21	29	30
起升高度 Lift Height	物料码 Part No.	物料码 Part No.	物料码 Part No.
4000	209850041004	209850041024	209850061079
4300	209850040897	209850041025	209850061080
4500	209850040963	201600040043	209850060647
4800	209850041018	209850041027	209850061082
5000	209850041031	209850041028	209850061083
5500	209850041020	209850041029	209850061084
6000	209850041021	209850041030	209850061085
6500	209850041022	209850041031	209850061086
7000	209850040831	209850040947	209850061087

序号 Item No.	21	29	30
起升高度 Lift Height	原物料码 Original Part No.	原物料码 Original Part No.	原物料码 Original Part No.
4000	JGD-095A01660-000	JGD-095A01095-000	JGG-16A02320A0-000
4300	JGD-095A01820-000	JGD-095A01195-000	JGG-16A02520A0-000
4500	JGD-095A01760-000	JGD-095A01260-000	JGG-16A02660A0-000
4800	JGD-095A01920-000	JGD-095A01355-000	JGG-16A02820A0-000
5000	JGD-095A01990-000	JGD-095A01425-000	JGG-16A02960A0-000
5500	JGD-095A02155-000	JGD-095A01590-000	JGG-16A03280A0-000
6000	JGD-095A02370-000	JGD-095A01805-000	JGG-16A03690A0-000
6500	JGD-095A02555-000	JGD-095A01990-000	JGG-16A04040A0-000
7000	JGD-095A02730-000	JGD-095A02165-000	JGG-16A04380A0-000