



1.0t ~ 1.8t X系列内燃平衡重式叉车

1.0t ~ 1.8t X Series Internal Combustion Counterbalanced Forklift Truck

门架零件目录

MAST PARTS CATALOG

12/2017



杭叉集团股份有限公司

HANGCHA GROUP CO., LTD.

全国客服热线：400-884-7888

■ 地址：中国浙江省杭州市临安区相府路666号

■ 电话 : 0571-88926666 (总机号) 85191117
■ 传真 : 0571-85131772 ■ 邮编 : 311305
■ 网站 : <http://www.zjhc.cn> ■ 电子邮件 : sales@zjhc.cn

■ Address For: OVERSEAS USERS

■ Address: 666 Xiangfu Road, Lin'an ,Hangzhou,Zhejiang, China

■ ZIP:311305

■ Fax: 0086-571-88926789 0086-571-88132890

■ Web: <http://www.hcforklift.com> ■ E-mail: sales@hcforklift.com

说明

1、本“零件目录”汇集了1.0t—1.5.5t X系列各种叉车的2级宽视野门架、2级全自由门架、3级全自由门架零部件。

2、查询方法：

①用户可根据叉车的额定载荷、门架的型式查找所需的零部件的序号,根据序号可查得相应的图号或标准号。

②在目录的右上角表示此总成所适用的额定载荷、门架的型式，不通用零件在备注中说明,此外不同起升高度所对应的零件请在附表中区别查询。

3、订购零件时，须写明所用叉车的型号,出厂编号,门架高度,所需零部件物料码、名称及订购数量。

4、维修更换零部件时，为确保质量，请使用本厂零部件。

5、为提高质量，本厂将对某些零部件进行改进,对改进部分在本目录中不能同时一一修改,请用户谅解，欲了解详细情况可与本集团销售公司及配件分公司联系。

INFORMATION

I. This catalogue collects all the parts (components) in the series of lift trucks, such as **SDMPLEX** and **TRIPLEX**.

II. Looking up methods:

I) Users can lookup the part (component) series number according to the truck's rated load and mast types, and then you can find the drawing codes and standards of the part (the component) in terms of the series number.

II) On the top right corner, there is an expression of rated load and mast types which are applicable for this assy. Furthermore, please lookup the parts(components) which used for different lift height distinctively in the Schedule.

III. When you order the parts (components), the truck's Model, factory number, mast height, code Number of drawing, name and quantity should be given when ordering the parts or the components.

IV. It is recommended to use the parts and components made by us for ideal the service and maintenance.

V. We reserve the right of the change of the truck in construction for improving our products without notice. For the details of changes, please consult with sales department of Hangzhou Forklift Truck Co., Ltd.

缩写及代码：	Abbreviations and codes：
A1,A2,A3 …… 总成序号	A1,A2,A3 …… Item,Assy
Assy …… 总成或组件	Assy …… Assembly
INC …… 包含	INC …… Including
非内置式 …… 不带侧移或带外挂式侧移的门架	Non-built-in …… Without Side shifter or with Hanging outside Side shifter for Mast
内置式 …… 内置式侧移门架	Built-in …… With Built-in Side shifter for Mast
B变速箱 …… 冈村变速箱	B transmission …… Okamura transmission
F变速箱 …… 国产变速箱	F transmission …… Chinese transmission
MS变速箱 …… 韩国变速箱	MS transmission …… Korea transmission

序号 Item	名称 Description	适用车型 Serial NO.	页码 Page
图 I Fig.I	复合滚轮组 Complex rolle assy	2级宽视野门架 2级全自由门架 3级全自由门架 SIMPL EX MAST DUPL EX MAST TRIPL EX MAST	1
图 II Fig. II	纵向滚轮组 Cross roller assv	2级宽视野门架 2级全自由门架 3级全自由门架 SIMPL EX MAST DUPL EX MAST TRIPL EX MAST	2
图 III Fig.III	侧滚轮组 Side roller assv	2级宽视野门架 2级全自由门架 3级全自由门架 SIMPL EX MAST DUPL EX MAST TRIPL EX MAST	3
图IV Fig. IV	货叉总成 Fork assy	2级宽视野门架 2级全自由门架 3级全自由门架 SIMPL EX MAST DUPL EX MAST TRIPL EX MAST	4
图V Fig.5	链条座 Chain seat	2级全自由门架 3级全自由门架 DUPL EX MAST TRIPL EX MAST	5
图 1 Fig.1	起升组件 Lifting part	1.0t-1.8t 2级宽视野门架 SIMPL EX MAST	6
图 2 Fig.2	链条总成 Chain assy	1.0t-1.8t 2级宽视野门架 SIMPL EX MAST	9
	选配表1 <Optional Parts List 1>	1.0t-1.8t 2级宽视野门架 SIMPL EX MAST	10
图 3 Fig.3	门架 Mast	1.0t-1.8t 2级宽视野门架 SIMPL EX MAST	11
	选配表2 <Optional Parts List 2>	1.0t-1.8t 2级宽视野门架 SIMPL EX MAST	12
图 4 Fig.4	货叉架总成 Fork shelf assv	1.0t-1.5t 2级宽视野门架 SIMPL EX MAST	13
图 5 Fig.5	货叉架总成 Fork shelf assv	1.8t 2级宽视野门架 SIMPL EX MAST	14
图 6 Fig.6	侧移架总成 Side-shifter assv	2级宽视野门架 2级全自由门架 3级全自由门架 SIMPL EX MAST DUPL EX MAST TRIPL EX MAST	15
图 7 Fig.7	侧移油缸 Side-shifter cvlinder	2级宽视野门架 2级全自由门架 3级全自由门架 SIMPL EX MAST DUPL EX MAST TRIPL EX MAST	17

图 8 Fig.8	右升降油缸/Lift cylinder,Right 左升降油缸/Lift cylinder,Left	1.0t-1.8t 2级宽视野门架 SIMPLEX MAST	18
--------------	---	--------------------------------	----

序号 Item	名称 Description	适用车型 Serial NO.	页码 Page
	选配表3 <Optional Parts List 3>	1.0t-1.8t 2级宽视野门架 SIMPLEX MAST	20
图 9 Fig.9	倾斜油缸 Tilt cylinder	2级宽视野门架 2级全自由门架 3级全自由门架 SIMPLEX MAST DUPLEX MAST TRIPLEX MAST	21
图 10 Fig.10	油路系统 Mast piping	1.0t-1.8t 2级宽视野门架 SIMPLEX MAST	23
	选配表4 <Optional Parts List 4>	1.0t-1.8t 2级宽视野门架 SIMPLEX MAST	25
图 11 Fig.11	侧移油路 Lateral moving circuit	1.0t-1.8t 2级宽视野门架 SIMPLEX MAST	26
	选配表5 <Optional Parts List 5>	1.0t-1.8t 2级宽视野门架 SIMPLEX MAST	28
图 12 Fig.12	第四联油路 Fourth oil	1.0t-1.8t 2级宽视野门架 SIMPLEX MAST	29
	选配表6 <Optional Parts List 6>	1.0t-1.8t 2级宽视野门架 SIMPLEX MAST	31
图 13 Fig.13	起升组件 Lifting part	1.0t-1.8t 2级全自由门架 DUPLEX MAST	32
	选配表7 <Optional Parts List 7>	1.0t-1.8t 2级全自由门架 DUPLEX MAST	35
图 14 Fig.14	货叉架总成 Fork shelf assv	1.0t-1.5t 2级全自由门架 DUPLEX MAST	36
图 15 Fig.15	货叉架总成 Fork shelf assv	1.8t 2级全自由门架 DUPLEX MAST	37
图 16 Fig.16	链条总成 Chain assy	1.0t-1.8t 2级全自由门架 DUPLEX MAST	38

	选配表8 <Optional Parts List 8>	1.0t-1.8t 2级全自由门架 DUPLEX MAST	39
图 17 Fig.17	右升降油缸/Lift cylinder,Right 左升降油缸/Lift cylinder,Left	1.0t-1.8t 2级全自由门架 DUPLEX MAST	40

序号 Item	名称 Description	适用车型 Serial NO.	页码 Page
	选配表9 <Optional Parts List 9>	1.0t-1.8t 2级全自由门架 DUPLEX MAST	42
图 18 Fig.18	短升降油缸 Lift cylinder , Short	2级全自由门架 3级全自由门架 DUPLEX MAST TRIPLEX MAST	43
	选配表10 <Optional Parts List 10>	2级全自由门架 3级全自由门架 DUPLEX MAST TRIPLEX MAST	45
图 19 Fig.19	油路系统 Mast piping	1.0t-1.8t 2级全自由门架 DUPLEX MAST	46
	选配表11 <Optional Parts List 11>	1.0t-1.8t 2级全自由门架 DUPLEX MAST	48
图 20 Fig.20	侧移油路 Lateral moving circuit	1.0t-1.8t 2级全自由门架 DUPLEX MAST	49
	选配表12 <Optional Parts List 12>	1.0t-1.8t 2级全自由门架 DUPLEX MAST	52
图 21 Fig.21	第四联油路 Fourth oil	1.0t-1.8t 2级全自由门架 DUPLEX MAST	53
	选配表13 <Optional Parts List 13>	1.0t-1.8t 2级全自由门架 DUPLEX MAST	55
图 22 Fig.22	起升组件 Lifting part	1.0t-1.8t 3级全自由门架 TRIPLEX MAST	56
图 23 Fig.23	门架 Mast	1.0t-1.8t 3级全自由门架 TRIPLEX MAST	59
	选配表14 <Optional Parts List 14>	1.0t-1.8t 3级全自由门架 TRIPLEX MAST	60

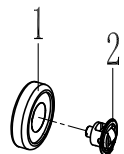
图 24 Fig.24	货叉架总成 Fork shelf assy	1.0t-1.5t 3级全自由门架TRIPLEX MAST	61
图 25 Fig.25	货叉架总成 Fork shelf assy	1.8t 3级全自由门架TRIPLEX MAST	62
图 26 Fig.26	链条总成 Chain assy	1.0t-1.8t 3级全自由门架TRIPLEX MAST	63

序号 Item	名称 Description	适用车型 Serial NO.	页码 Page
	选配表15 <Optional Parts List 15>	1.0t-1.8t 3级全自由门架TRIPLEX MAST	64
图 27 Fig.27	右升降油缸/Lift cylinder,Right 左升降油缸/Lift cylinder.Left	1.0t-1.8t 3级全自由门架TRIPLEX MAST	65
	选配表16 <Optional Parts List 16>	1.0t-1.8t 3级全自由门架TRIPLEX MAST	67
图 28 Fig.28	油路系统 Mast piping	1.0t-1.8t 3级全自由门架TRIPLEX MAST	68
	选配表17 <Optional Parts List 17>	1.0t-1.8t 3级全自由门架TRIPLEX MAST	71
图 29 Fig.29	侧移油路 Lateral moving circuit	1.0t-1.8t 3级全自由门架TRIPLEX MAST	72
	选配表18 <Optional Parts List 18>	1.0t-1.8t 3级全自由门架TRIPLEX MAST	75
图 30 Fig.30	第四联油路 Fourth oil	1.0t-1.8t 3级全自由门架TRIPLEX MAST	76
	选配表19 <Optional Parts List 19>	1.0t-1.8t 3级全自由门架TRIPLEX MAST	78

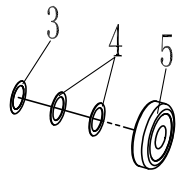
图 I 复合滚轮组
Fig.I Complex role assy

2级宽视野门架 2级全自由门架 3级全自由门架
SIMPLEX MAST DUPLEX MAST TRIPLEX MAST

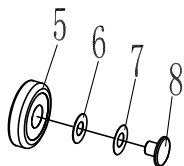
A:XR15M300-006000-000



B:XR15M300-007000-000



C:XR15M300-007000-000



序号 Item	物料码 Part No	名称 Description	数量 Qty	备注或适用车型 Remarks or Serial NO	原物料码 Original Part No
A	209500050002	复合滚轮组 Complex role assy	1		XR15M300-006000-000
B	209500020005	复合滚轮组 Complex role assy	1		XR15M300-007000-000
C	209500050003	复合滚轮组 Complex role assy	1		XR15M300-304000-000
1	209500030006	纵向滚轮 Cross roller	1		RC15M300-001001-G00
2	209500070004	侧滚轮组 Side roller assy	1		XR15M300-006200-G00
3	209500040011	调整垫片 Aiustina shim	1		XR15M300-007002-000
4	209500040010	调整垫片 Aiustina shim	2		XR15M300-007001-000
5	209500030004	纵向滚轮 Cross roller	1		XR15M300-007100-G00
6	209500040008	调整垫片 Aiustina shim	1		XR15M300-304001-000
7	209500040013	调整垫片 Aiustina shim	1		XR15M300-304002-000
8	209500080019	滑块 Sliding block	1		XR15M300-304003-000

--	--	--	--	--	--

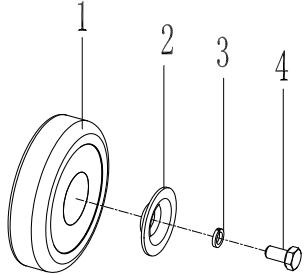
图 II 纵向滚轮组 Fig. II Cross roll assy	2级宽视野门架 2级全自由门架 3级全自由门架 SIMPLEX MAST DUPLEX MAST TRIPLEX MAST					
	序号 Item	物料码 Part No	名称 Description	数量 Qty	备注或适用车型 Remarks or Serial NO	原物料码 Original Part No
	D	209500020004	纵向滚轮组 Cross roller assy	1		XR18M300-303000-000
	1	209500030004	纵向滚轮 Cross roller	1		XR15M300-007100-G00
	2	209500040007	滚轮压盖 Roller cover	1		XR18M300-303001-000
	3	300030010015	垫圈8 Shim	1		G000093-000008-00
	4	300010040173	螺栓M8×16 Bolt M8×16	1		G005783-008020-00

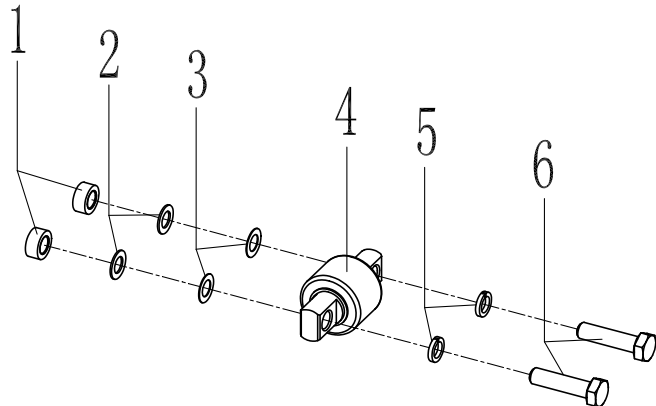
图 III 侧滚轮组 Fig. III Side roller assy		2级宽视野门架 2级全自由门架 3级全自由门架 SIMPLEX MAST DUPLEX MAST TRIPLEX MAST				
	序号 Item	物料码 Part No	名称 Description	数量 Qty	备注或适用车型 Remarks or Serial NO	原物料码 Original Part No
	E	209500070003	侧滚轮组 Side roller assy	1		XR15M300-302000-000
	1	209500090006	衬套 lining	2		XR15M300-302001-000
	2	209500040012	调整垫片 ...	2		XR15M300-302002-000
	3	209500040009	调整垫片 ...	2		XR15M300-302003-000
	4	209500080018	侧滚轮 ...	1		XR15M300-302100-G00
	5	300030010001	垫圈10 Washer 10	2		G000093-000010-00
	6	300010030014	螺栓 M10×40 Bolt M10×40	2		G005782-010045-00

图 IV 货叉总成 Fig. IV Fork assy		2级宽视野门架 2级全自由门架 3级全自由门架 SIMPLEX MAST DUPLEX MAST TRIPLEX MAST				
	序号 Item	物料码 Part No	名称 Description	数量 Qty	备注或适用车型 Remarks or Serial NO	原物料码 Original Part No
	A1	209500240106	货叉总成	1		N15M300-010000-000
	1	NO PART NO.	货叉体	1		
	2	209500260051	销轴组件	1		N25M300-011000-W00
	2-1	NO PART NO.	把手	1		
	2-2	NO PART NO.	弹簧	1		
	2-3	NO PART NO.	销轴	1		

图 V 链条座 Fig. V Chain seat		2级全自由门架 3级全自由门架 DUPLEX MAST TRIPLEX MAST				
	序号 Item	物料码 Part No	名称 Description	数量 Qty	备注或适用车型 Remarks or Serial NO	原物料码 Original Part No
	A1	209500120035	链条座	1	1.0t-1.5t	XR15N450-003000-000
	A2	209500270765	链条座	1	1.8t	XR18N450-003000-000
	1	209500120034	链轮座	1		XR15N450-003100-000
	2	208850010008	链轮	2	1.0t-1.5t	780708F1-G00
	2	208850010010	链轮	2	1.8t	780708F-G00
	3	300060030016	挡圈40	2		G0894P1-000040-00
	4	300040020083	螺钉M12×50	1		G000070-012050-00
	5	300030010002	垫圈12	1		G000093-000012-00

图1 起升组件 Fig.1 Lifting part	2级宽视野门架 SIMPLEX MAST					
	序号 Item	物料码 Part No	名称 Description	数量 Qty	备注或适用车型 Remarks or Serial NO	原物料码 Original Part No
	1	See Fig.3	门架	1		
	2	See Fig.2	链条总成	2		
	3	209750010106	挡货架	1		N15M300-020000-002
	4	209500210033	销轴	4		N15M300-001000-000
	5	300170040002	油杯M10×1	4		G001152-010001-00
	6	209500270217	螺栓M10×1.25×20	4		N30M300-004000-000
	7	See Fig.8	左升降油缸	1		
	8	See Fig.8	右升降油缸	1		
	9	See Fig. IV	货叉总成	1		

	10	See Fig.4	货叉架总成	1	1.0t-1.5t	
	10	See Fig.5	货叉架总成	1	1.8t	
	10	See Fig.6	侧移架总成	1		
	11	300030040014	垫圈8	2		G0097P1-000008-00
	12	300030010015	垫圈8	6		G000093-000008-00
	13	300040020100	螺钉M8×30	2		G000070-008030-00

图1 起升组件 Fig.1 Lifting part	2级宽视野门架 SIMPLEX MAST					
	序号 Item	物料码 Part No	名称 Description	数量 Qty	备注或适用车型 Remarks or Serial NO	原物料码 Original Part No
	14	209500270247	油缸调整垫圈	2		N15M300-000012-000
	15	300030040003	垫圈12	2		G0097P1-000012-00
	16	300030010002	垫圈12	3		G000093-000012-00
	17	300010060030	螺栓M12×1.25×40	2		G005786-012040-00
	18	209500170006	U形螺栓	2		XR15M300-001001-000
	19	209500180008	橡胶垫	2		XR15M300-001102-000
	20	209500180010	支撑板	2		XR15M300-001101-000
	21	300030010006	垫圈20	2		G000093-000020-00

	22	209500180055	螺钉M20×65	2		AH35M300-001001-000
	23	300020010009	螺母M20	2		G006170-000020-00
	24	300020010016	螺母M8	8		G006170-000008-00
	25	See Fig. 10	油路系统	1		
	26	300040020151	螺钉M12×20	1		G000070-012020-00
	27	300030040004	垫圈14	8		G0097P1-000014-00
	28	300030010003	垫圈14	8		G000093-000014-00

图1 起升组件 Fig.1 Lifting part		2级宽视野门架 SIMPLEX MAST				
序号 Item	物料码 Part No	名称 Description	数量 Qty	备注或适用车型 Remarks or Serial NO	原物料码 Original Part No	
29	300010060060	螺栓M14×1.5×35	8		G005786-014035-01	
30	See Fig.9	倾斜油缸	2			

图2 链条总成 Fig.2 Chain assy	2级宽视野门架 SIMPLEX MAST					
	序号 Item	物料码 Part No	名称 Description	数量 Qty	备注或适用车型 Remarks or Serial NO	原物料码 Original Part No
	A1	See OP.Parts 1	链条总成	1	1.0t-1.5t	
	A2	See OP.Parts 1	链条总成	1	1.8t	
	1	NO PART NO.	板式链LH1223×N	1	1.0t-1.5t	
	1	NO PART NO.	板式链LH1234×N	1	1.8t	
	2	300050010027	销3.2×25	2		G000091-3P2020-00
	3	NO PART NO.	销轴	2	1.0t-1.5t	

	3	NO PART NO.	销轴	2	1.8t	
	4	NO PART NO.	链条接头	1	1.0t-1.5t	
	4	NO PART NO.	链条接头	1	1.8t	
	5	300050010046	销4×35	2		G000091-004035-00
	6	300020020007	螺母M16×1.5	5		G006171-000016-02
	7	NO PART NO.	链条接头	1	1.0t-1.5t	
	7	NO PART NO.	链条接头	1	1.8t	

选配表1 <Optional Parts List 1>

序号 Item	A1(1.0t-1.5t)		A2(1.8t)	
	物料码 Part No.	原物料码 Original Part No.	物料码 Part No.	原物料码 Original Part No.
起升高度 Lift Height				
2000	209500190184	LH-1223073-100	209500191103	LH-1234073-100
2500	209500190198	LH-1223085-100	209500190016	LH-1234085-100
2700	209500190018	LH-1223091-100	209500191097	LH-1234091-100
3000	209500190061	LH-1223099-100	209500190111	LH-1234099-100
3300	209500190060	LH-1223107-100	209500190100	LH-1234107-100
3500	209500191038	LH-1223111-100	209500190072	LH-1234111-100

3600	209500190172	LH-1223117-100	209500191108	LH-1234117-100
3700	209500191040	LH-1223119-100	209500191109	LH-1234119-100
4000	209500190869	LH-1223131-100	209500190073	LH-1234131-100
4300	209500191042	LH-1223139-100	209500191102	LH-1234139-100
4500	209500191043	LH-1223143-100	209500191112	LH-1234143-100
4700	209500191044	LH-1223149-100	209500191113	LH-1234149-100
4800	209500191045	LH-1223151-100	209500191114	LH-1234151-100
5000	209500191046	LH-1223157-100	209500191092	LH-1234157-100
5500	209500191047	LH-1223169-100	209500191093	LH-1234169-100
6000	209500191048	LH-1223183-100	209500191117	LH-1234183-100

图3 门架 Fig.3 Mast	1.0t-1.8t 2级宽视野门架 SIMPLEX MAST					
	序号 Item	物料码 Part No	名称 Description	数量 Qty	备注或适用车型 Remarks or Serial NO	原物料码 Original Part No
	1	See OP.Parts 2	外门架	1		
	2	209500050002	复合滚轮组 Complex rolle assy	2	图 I Fig.I	XR15M300-006000-000
	3	209500270224	调整垫片	2		N30M300-000015-000

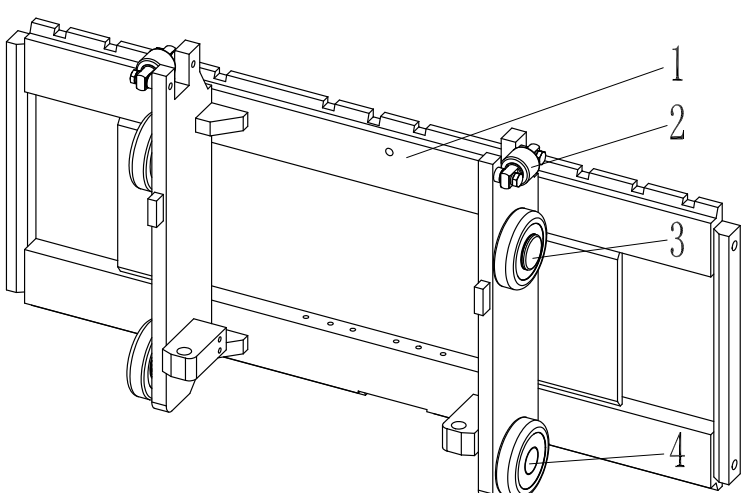
	4	209500270211	导轨衬垫	2		N30M300-000014-000
	5	300170040002	油杯M10×1	2		G001152-010001-00
	6	209500270252	轴瓦	2		N15M300-000006-000
	7	209500270251	轴承盖	2		N15M300-000005-002
	8	300030010003	垫圈14	2		G000093-000014-00
	9	300010060064	螺栓M14×1.5×45	2		G005786-014045-01
	10	See OP.Parts 2	内门架	1		
	11	208850010013	链轮	2		780708-G00
	12	300060030016	轴用弹性挡圈-A型40	2		G0894P1-000040-00
	13	209500020005	复合滚轮组 Complex rolle assv	2	图 I Fig.I	XR15M300-007000-000

选配表2<Optional Parts List 2>

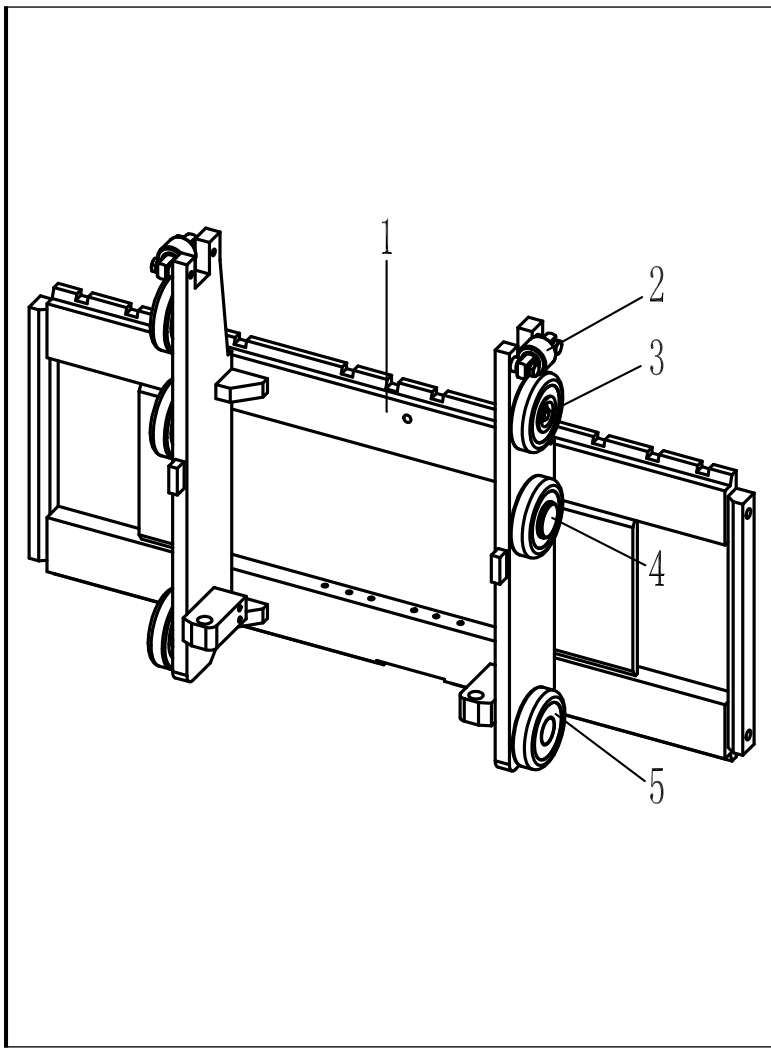
序号 Item	1		10	
	物料码 Part No.	原物料码 Original Part No.	物料码 Part No.	原物料码 Original Part No.
起升高度 Lift Height				
2000	209550000602	XR15M200-100000-000	209650000577	XR15M200-200000-000
2500	209550000603	XR15M250-100000-000	209650000578	XR15M250-200000-000

2700	209550000604	XR15M270-100000-000	209650000579	XR15M270-200000-000
3000	209550010037	XR15M300-100000-000	209650010036	XR15M300-200000-000
3300	209550000605	XR15M330-100000-000	209650000580	XR15M330-200000-000
3500	209550000606	XR15M350-100000-000	209650000581	XR15M350-200000-000
3600	209550000607	XR15M360-100000-000	209650000582	XR15M360-200000-000
3700	209550000608	XR15M370-100000-000	209650000583	XR15M370-200000-000
4000	209550000609	XR15M400-100000-000	209650000584	XR15M400-200000-000
4300	209550000610	XR15M430-100000-000	209650000585	XR15M430-200000-000
4500	209550000611	XR15M450-100000-000	209650000586	XR15M450-200000-000
4700	209550000612	XR15M470-100000-000	209650000587	XR15M470-200000-000
4800	209550000613	XR15M480-100000-000	209650000588	XR15M480-200000-000
5000	209550000614	XR15M500-100000-000	209650000589	XR15M500-200000-000
5500	209550000615	XR15M550-100000-000	209650000590	XR15M550-200000-000
6000	209550000616	XR15M600-100000-000	209650000591	XR15M600-200000-000

图4 货叉架总成 Fig.4 Fork shelf assy		1.0t-1.5t 2级宽视野门架 SIMPLEX MAST					
	序号 Item	物料码 Part No	名称 Description	数量 Qty	备注或适用车型 Remarks or Serial NO	原物料码 Original Part No	

	A	209700000067	货叉架总成	1	1.0t-1.5t	XR15M300-300000-000
	1	209700010045	货叉架	1		XR15M300-301000-000
	2	209500070003	侧滚轮组	2	图 III Fig.III	XR15M300-302000-000
	3	209500050003	复合滚轮组 Complex rolle assv	2	图 I Fig.I	XR15M300-304000-000
	4	209500020005	复合滚轮组 Complex rolle assv	2	图 I Fig.I	XR15M300-007000-000

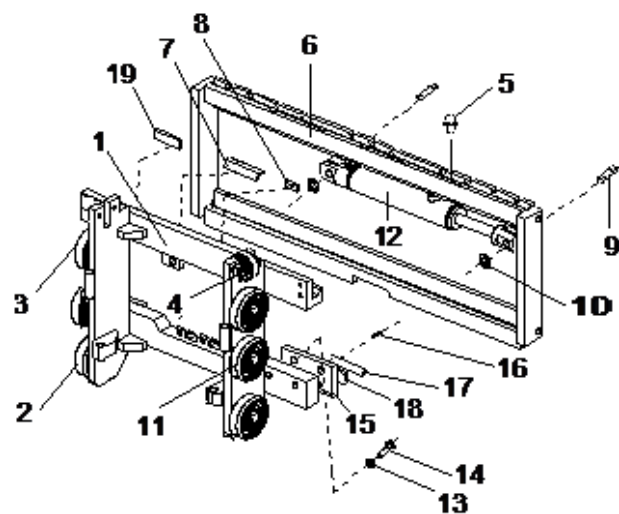
<p>图5 货叉架总成 Fig.5 Fork shelf assy</p>	<p>1.8t 2级宽视野门架 SIMPLEX MAST</p>	
---	----------------------------------	--



序号 Item	物料码 Part No	名称 Description	数量 Qty	备注或适用车型 Remarks or Serial NO	原物料码 Original Part No
A	209700000066	货叉架总成	1	1.8t	XR18M300-300000-000
1	209700010044	货叉架	1		XR18M300-301000-000
2	209500070003	侧滚轮组	2	图 III Fig.III	XR15M300-302000-000
3	209500020004	纵向滚轮组	2	图 II Fig.II	XR18M300-303000-000
4	209500050003	复合滚轮组 Complex rolle assv	2	图 I Fig.I	XR15M300-304000-000
5	209500020005	复合滚轮组 Complex rolle assv	2	图 I Fig.I	XR15M300-007000-000

图6 侧移架总成
Fig.6 Side shifter assy

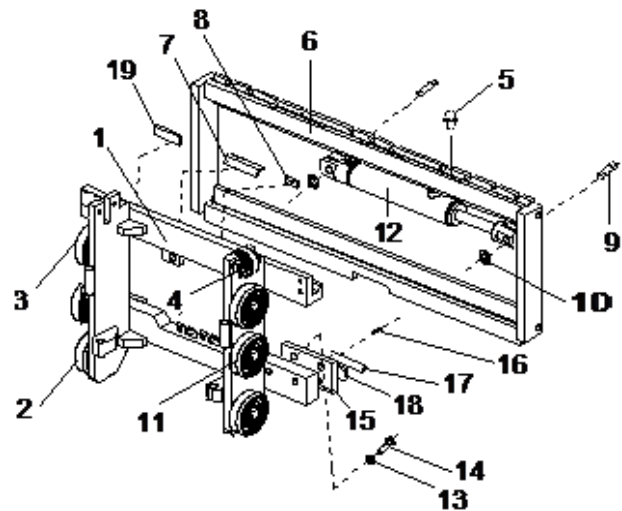
2级宽视野门架 2级全自由门架 3级全自由门架
SIMPLEX MAST Duplex MAST TRIPLEX MAST



序号 Item	物料码 Part NO	名称 Description	数量 Qty	备注或适用车型 Remarks or Serial NO	原物料码 Original Part No
A1	209700001067	侧移架总成	1	2级宽视野门架	XR15B300-300000-000
A2	209700001075	侧移架总成	1	2级全自由门架	XR15C300-300000-000
A3	209700001071	侧移架总成	1	3级全自由门架	XR15V450-300000-000
1	209700011184	叉架体	1	2级宽视野门架	XR15B300-301000-000
1	209700011201	叉架体	1	2级全自由门架	XR15C300-301000-000
1	209700011195	叉架体	1	3级全自由门架	XR15V450-301000-000
2	209500020005	复合滚轮组 Complex rolle assv	2	图 I Fig.I	XR15M300-007000-000
3	209500020004	纵向滚轮组	2	图 II Fig.II	XR18M300-303000-000
4	209500070003	侧滚轮组	2	图 III Fig.III	XR15M300-302000-000
5	300170040003	油杯M6	5		G001152-006000-00
6	209700090008	侧移货叉架	1		S16V450-302000-000
7	209700130048	塞铁	3		S16V450-300001-000
8	209700150003	挡块	2		1.4QS1-000006
9	209700130053	轴	2		S16V450-300005-001
10	300050010032	销 3.2×30	2		G000091-3P2030-00

图6 侧移架总成
Fig.6 Side shifter assy

2级宽视野门架 2级全自由门架 3级全自由门架
SIMPLEX MAST Duplex MAST TRIPLEX MAST



序号 Item	物料码 Part NO	名称 Description	数量 Qty	备注或适用车型 Remarks or Serial NO	原物料码 Original Part No
11	209500050004	复合滚轮组 Complex rolle assv	2		X15M300-004000-G00
12	See Fig.7	侧移油缸	1		
13	300030010004	垫圈 16	4		G000093-000016-00
14	300010060076	螺栓M16×1.5×50	4		G005786-016050-01
15	209700080091	挂钩板	4		S16V450-300006-000
16	300040180016	螺钉M8×16	4		G000068-008016-00
17	209700130051	下滑块	2		S16V450-300002-000
18	209700130049	调整垫	2		S16V450-300008-000
19	209700130050	调整垫	3		S16V450-300009-000

--	--	--	--	--	--

图7 侧移油缸 Fig.7 Side shift cylinder	2级宽视野门架 2级全自由门架 3级全自由门架 SIMPLEX MAST Duplex MAST TRIPLEX MAST					
	序号 Item	物料码 Part NO	名称 Description	数量 Qty	备注或适用车型 Remarks or Serial NO	原物料码 Original Part No
	A	209800000293	侧移油缸	1		S16V450-303000-000
	1	209800020136	活塞杆	1		S16V450-303200-000
	2	204100070368	CK防尘圈d25	1		CK-025-G00
	3	204100070366	CKG密封圈d25	1		CKG-025-G00
	4	204100070367	CKS密封圈d25	1		CKS-025-G00
	5	202300030003	导向套	1		2025N4.5-133002
	6	300130010118	O形密封圈56×3.5	1		G001235-005603P5-00
	7	300130010107	O形密封圈50×3.5	1		G001235-005003P5-00
	8	200301030003	含油油衬	1		2025N4.5-133001
	9	202300100016	活塞环	2		3-22-00-10
	10	201700100001	活塞	1		3-22-00-03
	11	207900070041	六角槽形螺母	1		3-22-00-02
	12	300050010047	销4×36	1		G000091-004036-00

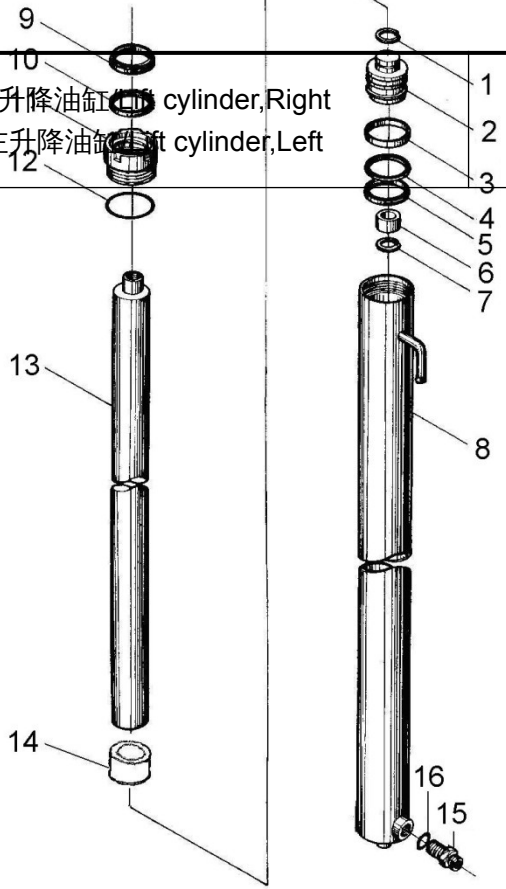
	13	209800010204	油缸体	1		S16V450-303100-000
	K1	820020000023	侧移油缸修理包Seal kit	1	INC: 2, 3, 4, 6, 7	S16V450-303000-000-Kit

图8 右升降油缸/Lift cylinder,Right Fig.8 左升降油缸/Lift cylinder,Left		2级宽视野门架 SIMPLEX MAST				
序号 Item	物料码 Part No	名称 Description	数量 Qty	备注或适用车型 Remarks or Serial NO	原物料码 Original Part No	
A1	See OP.Parts 3	右升降油缸	1			
A2	See OP.Parts 3	左升降油缸	1			
1	300060050002	挡圈 24	1		G0895P1-000024-00	
2	209800050075	活塞	1		N15M300-400002-W00	
3	209800090290	支承圈	1		N15M300-400003-W00	
4	209800090286	保护圈	1		N15M300-400004-W00	
5	209990000157	OSI密封圈D45	1		FU0563L0-G00	
6	209800090287	阀套	1		N15M300-400005-W00	
7	300060050002	挡圈 24	1		G0895P1-000024-00	
8	See OP.Parts 3	右缸体	1			
8	See OP.Parts 3	左缸体	1			
9	204100070375	DKI防尘圈d35	1		FD2041A0-G00	

10	204100070388	ISI密封圈d35	1		FU0424K0-G00
11	209800030060	导向套	1		N15M300-402000-W00
注：序号1,2,13,组装后为不可拆分整体,用户订购时应订购整个组合件。					

图8 右升降油缸 Right cylinder, Right
Fig.8 左升降油缸 Left cylinder, Left

2级宽视野门架 SIMPLEX MAST



序号 Item	物料码 Part No	名称 Description	数量 Qty	备注或适用车型 Remarks or Serial NO	原物料码 Original Part No
12	300130010036	O形密封圈46.2×2.65	1		G3452P1-46P22P65-00
13	See OP.Parts 3	活塞杆	1		
14	See OP.Parts 3	隔套 Sheath	1		
15	209800080014	油嘴组件	1	右升降油缸	X15M300-403000-W00
16	810900000001	O形密封圈14×2.65	1	右升降油缸	G001235-00142P65-00
K1	820020000011	左右缸修理包	2	For (1-1.8t):	X15M300-4/5-000-Kit

注：序号1,2,13,组装后为不可拆分整体,用户订购时应订购整个组合件。					

选配表3 <Optional Parts List 3>

序号 Item	A1 Lift cylinder,Right	A2 Lift cylinder,Left	8 Cylinder body, R	8 Cylinder body , L	13 Piston rod	14 Sheath
起升高度 Lift Height	物料码 Part No.	物料码 Part No.	物料码 Part No.	物料码 Part No.	物料码 Part No.	物料码 Part No.
2000	209800002252	209800002257	209800011981	209800011986	209800021290	Without part14
2500	209800002253	209800002258	209800011982	209800011987	209800021291	
2700	209800002254	209800002259	209800011983	209800011988	209800021292	
3000	209800000262	209800000264	209800010177	209800010178	209800020359	
3300	209800002255	209800002260	209800011984	209800011989	209800021293	
3500	209800002256	209800002261	209800011985	209800011990	209800021294	
3600	209800002262	209800002272	209800011991	209800012001	209800021610	209800090947
3700	209800002263	209800002273	209800011992	209800012002	209800021611	209800090948
4000	209800002264	209800002274	209800011993	209800012003	209800021612	
4300	209800002265	209800002275	209800011994	209800012004	209800021613	
4500	209800002266	209800002276	209800011995	209800012005	209800021614	
4700	209800002267	209800002277	209800011996	209800012006	209800021615	
4800	209800002264	209800002274	209800011993	209800012003	209800021616	
5000	209800002269	209800002279	209800011998	209800012008	209800021617	
5500	209800002270	209800002280	209800011999	209800012009	209800021618	

6000	209800002271	209800002281	209800012000	209800012010	209800021619	
------	--------------	--------------	--------------	--------------	--------------	--

选配表3 <Optional Parts List 3>

序号 Item	A1 Lift cylinder,Right	A2 Lift cylinder,Left	8 Cylinder body, R	8 Cylinder body , L	13 Piston rod	14 Sheath
起升高度 Lift Height	原物料码 Original Part No.	原物料码 Original Part No.	原物料码 Original Part No.	原物料码 Original Part No.	原物料码 Original Part No.	原物料码 Original Part No.
2000	X15M200-400000-000	X15M200-500000-000	X15M200-401000-W00	X15M200-501000-W00	N15M200-400001-W00	Without part14
2500	X15M250-400000-000	X15M250-500000-000	X15M250-401000-W00	X15M250-501000-W00	N15M250-400001-W00	
2700	X15M270-400000-000	X15M270-500000-000	X15M270-401000-W00	X15M270-501000-W00	N15M270-400001-W00	
3000	X15M300-400000-001	X15M300-500000-001	X15M300-401000-W01	X15M300-501000-W01	N15M300-400001-W00	
3300	X15M330-400000-000	X15M330-500000-000	X15M330-401000-W00	X15M330-501000-W00	N15M330-400001-W00	
3500	X15M350-400000-000	X15M350-500000-000	X15M350-401000-W00	X15M350-501000-W00	N15M350-400001-W00	
3600	X15M360-400000-000	X15M360-500000-000	X15M360-401000-W00	X15M360-501000-W00	N15M360-400001-W00	
3700	X15M370-400000-000	X15M370-500000-000	X15M370-401000-W00	X15M370-501000-W00	N15M370-400001-W00	
4000	X15M400-400000-000	X15M400-500000-000	X15M400-401000-W00	X15M400-501000-W00	N15M400-400001-W00	N15M400-400002-W00
4300	X15M430-400000-000	X15M430-500000-000	X15M430-401000-W00	X15M430-501000-W00	N15M430-400001-W00	
4500	X15M450-400000-000	X15M450-500000-000	X15M450-401000-W00	X15M450-501000-W00	N15M450-400001-W00	
4700	X15M470-400000-000	X15M470-500000-000	X15M470-401000-W00	X15M470-501000-W00	N15M470-400001-W00	
4800	X15M400-400000-000	X15M400-500000-000	X15M400-401000-W00	X15M400-501000-W00	N15M480-400001-W00	
5000	X15M500-400000-000	X15M500-500000-000	X15M500-401000-W00	X15M500-501000-W00	N15M500-400001-W00	

5500	X15M550-400000-000	X15M550-500000-000	X15M550-401000-W00	X15M550-501000-W00	N15M550-400001-W00	
6000	X15M600-400000-000	X15M600-500000-000	X15M600-401000-W00	X15M600-501000-W00	N15M600-400001-W00	

图9 倾斜油缸 Fig.9 Tilt cylinder		2级宽视野门架 2级全自由门架 3级全自由门架 SIMPLEX MAST DUPLEX MAST TRIPLEX MAST				
序号 Item	物料码 Part No	名称 Description	数量 Qty	备注或适用车型 Remarks or Serial NO	原物料码 Original Part No	
A1	209800000474	倾斜油缸	1	SIMPLEX, DUPLEX	R15M300-600000-000	
A2	209800000027	倾斜油缸	1	TRIPLEX, H=4m	R15M430-600000-000	
A2	209800000027	倾斜油缸	1	H≤2m, 4.3≤H≤5m	R15M430-600000-000	
A3	209800000030	倾斜油缸	1	H≥5.5m	N15N550-600000-003	
1	209800070010	耳环	1		N15M300-600001-000	
2	209800090288	球面轴承	1		N15M300-600002-000	
3	300170040003	油杯M6	1		G001152-006000-00	
4	300030010003	垫圈14	1		G000093-000014-00	

	5	300020020020	螺母M14×1.5	1		G006171-000014-02
	6	300010050031	螺栓M14×1.5×50	1		G005785-014050-01
	7	209800020360	活塞杆 Piston rod	1	A1	N15M300-600003-000
	7	209800020018	活塞杆 Piston rod	1	A2 , A3	N15M430-600001-000
	8	200100070017	防尘圈 Dustproof ring d25×33×4.5	1		d25-G00
	9	209800030062	导向套 Guide sleeve	1		N15M300-602000-000
	10	300130010131	O形密封圈 70×3.1 O-ring 70×3.1	1		G001235-007003P1-00

图9 倾斜油缸 Fig.9 Tilt cylinder		2级宽视野门架 SIMPLEX MAST				
序号 Item	物料码 Part No	名称 Description	数量 Qty	备注或适用车型 Remarks or Serial NO	原物料码 Original Part No	
11	209990000168	U形密封圈d25	1		RU3000250-Z20-G00	
12	209990000543	斯特封d25	1		RS1300250-T46NA-G00	
13	300130010130	O形密封圈65×5.7	1		G001235-006505P7-00	
14	209800010516	缸体	1		N15M300-601000-000	
15	209990000028	U形密封圈D65	2		FU0807L0-01-G00	
16	300130010143	O形密封圈30×3.1	1		G001235-003003P1-00	
17	209800090237	挡圈65×55×2.5	1		R15M300-600002-000	

	18	209800050076	活塞	1		N15M300-600007-000
	19	209800090238	支撑环65×60×6.1	1		R15M300-600003-000
	20	300020260003	螺母M20×1.5	1		G009459-000020-01
	21	300050010048	销4×40	1		G000091-004040-00
	22	205100040018	复合衬套3045	1		SF-1-3045-G00
	23	209800080004	隔套 Spacer bush	1	A2	N15M430-600002-000
	23	209800080003	隔套	1	A3	N15N550-600002-000
	K1	R15M300-6-000-Kit	倾斜油缸修理包	2	INC:8,10-13,15,16	

图10 油路系统 Fig.10 Mast piping	2级宽视野门架 SIMPLEX MAST					
	序号 Item	物料码 Part No	名称 Description	数量 Qty	备注或适用车型 Remarks or Serial NO	原物料码 Original Part No
	1	See OP.Parts 4	回油管φ14.5/φ9.5	1		
	2	209850090299	镶边	5		N30M300-700002-000
	3	209990000574	通用尼龙扎带	5		GT-3001-G00
	4	See OP.Parts 4	回油管φ14.5/φ9.5	1		
	5	209850090298	三通接头	1		N30M300-700005-000
	6	209500270220	螺栓M8×1.25×16	3		N30M300-003000-000

	7	209850080037	管夹 Clamp	2		S16M300-700003-000
	8	206300070062	回油管φ14.5/φ9.5 Return oil pipe φ14.5/φ9.5	1		JGD-095A01360-000
	9	209850080058	管夹 Clamp	1		N30M300-700008-000
	10	209990000937	胶管接头 Oil pipe assy	1		JGG-13A00480Z5-000
	11	206200110006	限速阀 Speed limiting valve	1		XSF2-F16L-1.5/40-G00
	12	300290010006	喉箍16 Clamp 16	6		JT08870-0160000000-00
	13	209990000938	胶管接头 Oil pipe assy	1		JGG-10A00372A0-000
	14	209850060169	三通接头 Tee fitting	1		RC25U300-704000-000
	15	209850060171	直通管接头 Nipple	1		RC25U300-700002-000

图10 油路系统
Fig.10 Mast piping

2级宽视野门架 SIMPLEX MAST

序号 Item	物料码 Part No	名称 Description	数量 Qty	备注或适用车型 Remarks or Serial NO	原物料码 Original Part No
16	300130010134	O形密封圈24×2.4 O-ring 24×2.4	3		G001235-002402P4-00
17	209850090304	接头 Fitting	1		N15M300-700010-000

选配表4 <Optional Parts List 4>

序号 Item.	序号1		序号4	
	物料码 Part No.	原物料码 Original Part No.	物料码 Part No.	原物料码 Original Part No.
起升高度 Lift Height				
2000	209850040937	JGD-095A00715-000	209850040952	JGD-095A00260-000
2500	209850040938	JGD-095A00965-000	209850040953	JGD-095A00510-000
2700	209850040939	JGD-095A01065-000	209850040954	JGD-095A00610-000
3000	201600040054	JGD-095A01215-000	201600040055	JGD-095A00760-000
3300	209850040940	JGD-095A01365-000	209850040955	JGD-095A00910-000
3500	209850040941	JGD-095A01465-000	209850040956	JGD-095A01010-000
3600	209850040942	JGD-095A01565-000	209850040957	JGD-095A01110-000

3700	209850040943	JGD-095A01615-000	209850040958	JGD-095A01160-000
4000	209850040944	JGD-095A01815-000	206300070062	JGD-095A01360-000
4300	209850040945	JGD-095A01965-000	209850040960	JGD-095A01510-000
4500	209850040946	JGD-095A02065-000	209850040961	JGD-095A01610-000
4700	209850040947	JGD-095A02165-000	209850040962	JGD-095A01710-000
4800	209850040948	JGD-095A02215-000	209850040963	JGD-095A01760-000
5000	209850040949	JGD-095A02315-000	209850040964	JGD-095A01860-000
5500	209850040950	JGD-095A02565-000	209850040965	JGD-095A02110-000
6000	209850040951	JGD-095A02815-000	209850040966	JGD-095A02360-000

图11 侧移油路 Fig.11 lateral moving circuit		2级宽视野门架 SIMPLEX MAST				
	序号 Item	物料码 Part NO	名称 Description	数量 Qty	备注或适用车型 Remarks or Serial NO	原物料码 Original Part No
	A1	See OP.Parts 5	侧移油路	1		
	1	209850090330	滑轮轴	1		J25B300-900007-000
	2	209850090329	滑轮	2		J25B300-900006-001

	3	209850050034	垫片 Gasket	1		J25B300-900005-000
	4	300030010003	垫圈 14	1		G000093-000014-00
	5	See OP.Parts 5	管夹组件	1		
	5-1	300040020102	螺钉M8×40	1		G000070-008040-00
	5-2	206500040044	盖板	1		RT500-650006-000
	5-3	209850080178	管夹	1		XR15C300-901001-000
	5-4	209850070386	支板	1		RTE35B300-921000-000
	5-5	300040020097	螺钉M8×20	2		G000070-008020-00
	5-6	300030010015	垫圈 8	6		G000093-000008-00
	5-7	209850090193	垫片	1		RTE35V450-820001-000
	6	See OP.Parts 5	胶管接头	2		
	7	See OP.Parts 5	钢油管	1		

图11 侧移油路 Fig.11 lateral moving circuit	2级宽视野门架 SIMPLEX MAST					
	序号 Item	物料码 Part NO	名称 Description	数量 Qty	备注或适用车型 Remarks or Serial NO	原物料码 Original Part No
	8	209850060598	90°管接头 90°Elbow	2		XR15B300-904000-000
	9	209850060616	胶管接头	1		JGG-08B00320A0-000

	10	209850060619	胶管接头	1		JGG-08B00700Z0-000
	11	209850060618	胶管接头	1		JGG-08B00770Z0-000
	12	300040020098	螺钉M8×25	2		G000070-008025-00
	13	300130010089	O形密封圈22×2.4	2		G001235-002202P4-00
	14	209850060167	直通接头	1		RC25V450-900006-000
	15	209850060754	直通接头	1		XR15V450-900005-000
	16	209850090760	接头支座	1		XR15B300-911000-000
	17	209850090206	垫片	1		RTE35B300-910001-000
	18	209850060617	胶管接头	1		JGG-08B00250A0-000
	19	See OP.Parts 5	抱箍组件	1		
	20	300040020096	螺钉M8×16	2		G000070-008016-00

选配表5 <Optional Parts List 5>

序号 Item	A1	5	6	7	19
起升高度 Lift Height	物料码 Part NO.	物料码 Part NO.	物料码 Part NO.	物料码 Part NO.	物料码 Part NO
2000	209850001473	Without this part	209850060953	209850071496	Without this part
2500	209850001474		209850060954		

2700	209850001475	209850080132	209850060955	209850040746	209850090725
3000	209850001235		209850060613		
3300	209850001476		209850060956		
3500	209850001477		209850060957		
3600	209850001478		209850060958		
3700	209850001479		209850060959		
4000	209850001480		209850060960		
4300	209850001481		209850060961		
4500	209850001482		209850060962		
4700	209850001483		209850060963		
4800	209850001484		209850060964		
5000	209850001485		209850060965		
5500	209850001486		209850060966		
6000	209850001487		209850060967		

选配表5 <Optional Parts List 5>

序号 Item	A1	5	6	7	19
起升高度 Lift Height	原物料码 Original Part No.	原物料码 Original Part No.	原物料码 Original Part No.	原物料码 Original Part No.	原物料码 Original Part No.
2000	XR15B200-900000-000	Without this part	JGG-08B01610A0-000	XR15B200-941000-000	Without this part

2500	XR15B250-900000-000		JGG-08B02090A0-000		
2700	XR15B270-900000-000	XR15B300-920000-000	JGG-08B02380A0-000	XR15V450-931000-000	XR15V450-931000-000
3000	XR15B300-900000-000		JGG-08B02670A0-000		
3300	XR15B330-900000-000		JGG-08B02970A0-000		
3500	XR15B350-900000-000		JGG-08B03160A0-000		
3600	XR15B360-900000-000		JGG-08B03360A0-000		
3700	XR15B370-900000-000		JGG-08B03460A0-000		
4000	XR15B400-900000-000		JGG-08B03850A0-000		
4300	XR15B430-900000-000		JGG-08B04150A0-000		
4500	XR15B450-900000-000		JGG-08B04350A0-000		
4700	XR15B470-900000-000		JGG-08B04540A0-000		
4800	XR15B480-900000-000		JGG-08B04640A0-000		
5000	XR15B500-900000-000		JGG-08B04840A0-000		
5500	XR15B550-900000-000		JGG-08B05330A0-000		
6000	XR15B600-900000-000		JGG-08B05820A0-000		

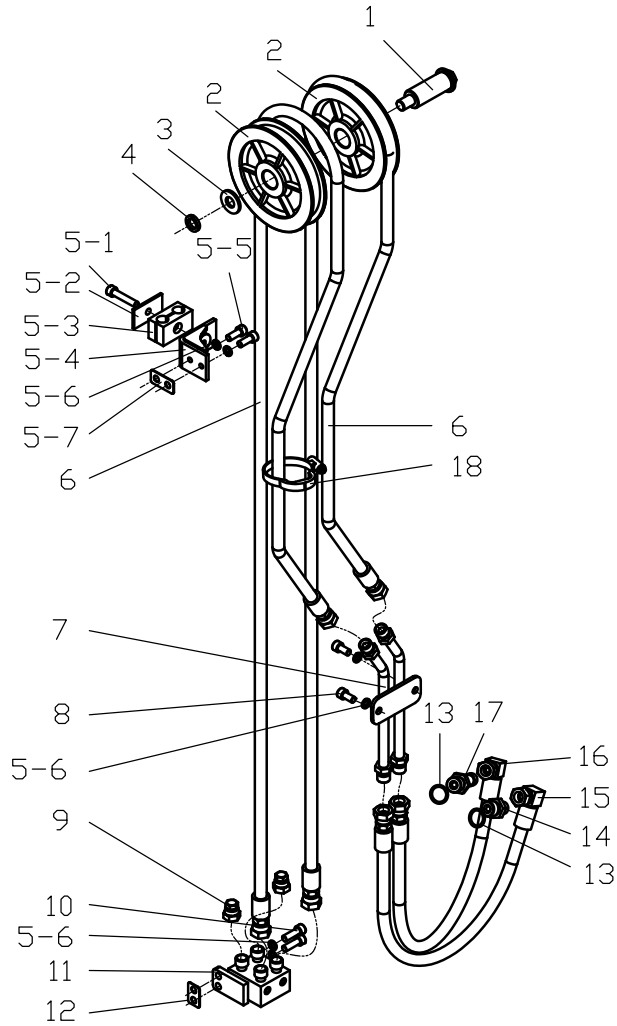
图12 第四联油路
Fig.12 Fourth oil

2级宽视野门架 SIMPLEX MAST

序号 Item	物料码 Part NO	名称 Description	数量 Qty	备注或适用车型 Remarks or Serial NO	原物料码 Original Part No
A1	See OP.Parts 6	第四联油路The fourth	1		
1	209850090330	滑轮轴	1		J25B300-900007-000
2	209850090329	滑轮	2		J25B300-900006-001
3	209850050034	垫片 Gasket	1		J25B300-900005-000
4	300030010003	垫圈 14	1		G000093-000014-00
5	See OP.Parts 6	管夹组件	1		
5-1	300040020102	螺钉M8×40	1		G000070-008040-00
5-2	206500040044	盖板	1		RT500-650006-000
5-3	209850080129	管夹	1		XR15B300-920001-000
5-4	209850070386	支板	1		RTE35B300-921000-000
5-5	300040020097	螺钉M8×20	2		G000070-008020-00
5-6	300030010015	垫圈 8	6		G000093-000008-00
5-7	209850090193	垫片	1		RTE35V450-820001-000
6	See OP.Parts 6	胶管接头	2		
7	See OP.Parts 6	钢油管	1		

图12 第四联油路
Fig.12 Fourth oil

2级宽视野门架 SIMPLEX MAST



序号 Item	物料码 Part NO	名称 Description	数量 Qty	备注或适用车型 Remarks or Serial NO	原物料码 Original Part No
8	300040020096	螺钉M8×16	2		G000070-008016-00
9	209850090773	闷盖	2		XR15V450-805000-000
10	300040020098	螺钉M8×25	2		G000070-008025-00
11	209850090759	接头支座	1		XR15B300-811000-000
12	209850090206	垫片	1		RTE35B300-910001-000
13	300130010089	O形密封圈22×2.4	2		G001235-002202P4-00
14	209850060167	直通接头	1		RC25V450-900006-000
15	209850060615	胶管接头	1		JGG-08B01000Z0-000
16	209850060614	胶管接头	1		JGG-08B01070Z0-000
17	209850060754	直通接头	1		XR15V450-900005-000
18	See OP.Parts 6	抱箍组件	1		

选配表6<Optional Parts List 6>

序号 Item	A1	5	6	7	18
起升高度 Lift Height	物料码 Part NO.	物料码 Part NO.	物料码 Part NO.	物料码 Part NO.	物料码 Part NO
2000	209850001458	Without this part	209850060953	209850071496	Without this part
2500	209850001459		209850060954		
2700	209850001460	209850080132	209850060955	209850040748	209850090725
3000	209850001259		209850060613		
3300	209850001461		209850060956		
3500	209850001462		209850060957		
3600	209850001463		209850060958		
3700	209850001464		209850060959		
4000	209850001465		209850060960		
4300	209850001466		209850060961		
4500	209850001467		209850060962		
4700	209850001468		209850060963		
4800	209850001469		209850060964		
5000	209850001470		209850060965		
5500	209850001471		209850060966		
6000	209850001472	209850060967			

选配表6<Optional Parts List 6>

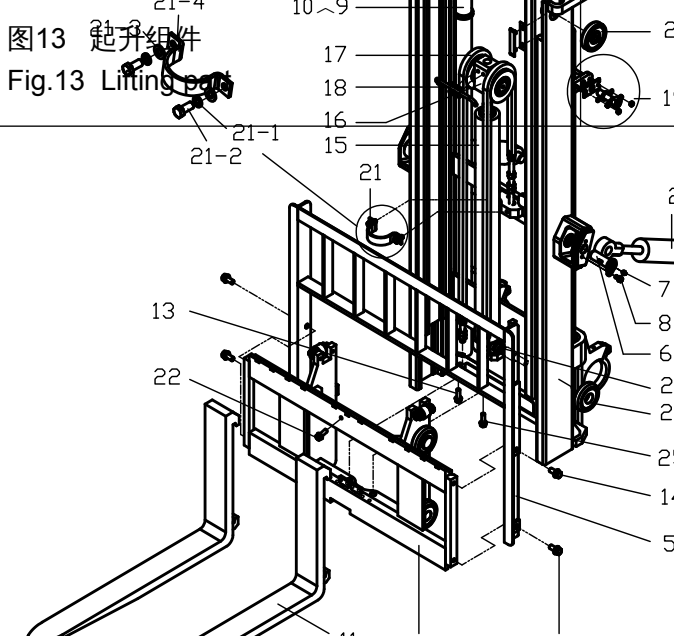
序号 Item	A1	5	6	7	18
起升高度 Lift Height	物料码 Part NO.	原物料码 Original Part No.	原物料码 Original Part No.	原物料码 Original Part No.	原物料码 Original Part No.
2000	XR15B200-800000-000	Without this part	JGG-08B01610A0-000	XR15B200-941000-000	Without this part
2500	XR15B250-800000-000		JGG-08B02090A0-000		
2700	XR15B270-800000-000	XR15B300-920000-000	JGG-08B02380A0-000	XR15V450-831000-000	XR15B300-901000-000
3000	XR15B300-800000-000		JGG-08B02670A0-000		
3300	XR15B330-800000-000		JGG-08B02970A0-000		
3500	XR15B350-800000-000		JGG-08B03160A0-000		
3600	XR15B360-800000-000		JGG-08B03360A0-000		
3700	XR15B370-800000-000		JGG-08B03460A0-000		
4000	XR15B400-800000-000		JGG-08B03850A0-000		
4300	XR15B430-800000-000		JGG-08B04150A0-000		
4500	XR15B450-800000-000		JGG-08B04350A0-000		
4700	XR15B470-800000-000		JGG-08B04540A0-000		
4800	XR15B480-800000-000		JGG-08B04640A0-000		
5000	XR15B500-800000-000		JGG-08B04840A0-000		
5500	XR15B550-800000-000		JGG-08B05330A0-000		
6000	XR15B600-800000-000	JGG-08B05820A0-000			

图13 起升组件

1.0t-1.8t 2级全自由门架 DUPLEX MAST

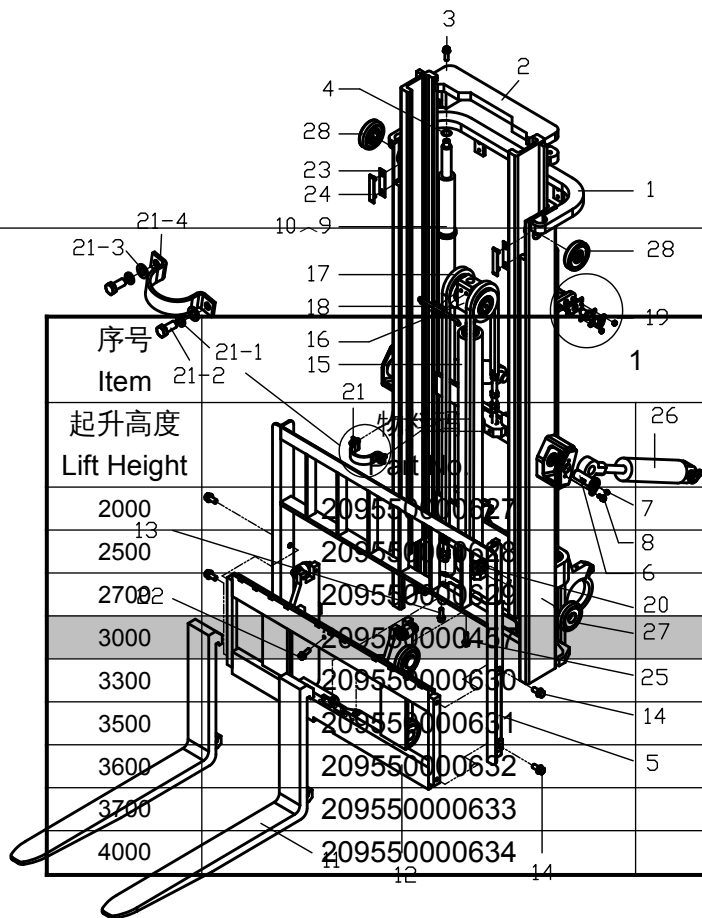
序号 Item	物料码 Part No	名称 Description	数量 Qty	备注或适用车型 Remarks or Serial NO	原物料码 Original Part No
1	See OP.Parts 7	外门架	1		
2	See OP.Parts 7	内门架	1		
3	209500270061	螺栓组件	2		XR30U300-002000-000
4	209500270228	油缸调整垫圈	2组		N30M300-000012-000
5	209750010106	挡货架	1		N15M300-020000-002
6	209500270217	销轴	4		N30M300-004000-000
7	300170040002	油杯M10×1	6		G001152-010001-00
8	209500270217	螺栓M10×1.25×20	4		N30M300-004000-000
9	See Fig.17	左升降油缸	1	对称位置 Position symmetry	
10	See Fig.17	右升降油缸	1		

	11	See Fig. IV	货叉总成	2		
	12	See Fig.14	货叉架总成	1	1.0t-1.5t	
	12	See Fig.15	货叉架总成	1	1.8t	
	12	See Fig.6	侧移架总成	1		
	13	209500270066	螺栓组件	2		XR15M300-003000-000

 <p>图13 起升组件 Fig.13 Lifting part</p>	1.0t-1.8t 2级全自由门架 DUPLEX MAST					
	序号 Item	物料码 Part No	名称 Description	数量 Qty	备注或适用车型 Remarks or Serial NO	原物料码 Original Part No
	14	209500270218	螺栓M14×1.5×30	2		N30M300-006000-000
	15	See Fig.18	短升降油缸	1		
	16	See Fig.V	链条座	1		
	17	See Fig.16	链条总成	2		
	18	209500140030	链轮护板	1		XR15N450-004000-000
	19	209500160007	油缸抱箍	1		XR15M300-001000-000
	20	See Fig.19	油路系统	1		
	21	209500170128	油缸抱箍	1		XR15N450-002000-000
21-1	300030010002	垫圈 12	2		G000093-000012-00	

	21-2	300010040030	螺栓M12×20	2		G005783-012020-00
	21-3	300030040003	垫圈 12	2		G0097P1-000012-00
	21-4	209500170011	油缸固定板	1		X15N450-000001-000
	26	209500270063	螺栓组件	1		XR30M300-004000-000
	27	209500270224	调整垫片	2组		N30M300-000015-000
	28	209500270211	导轨衬垫	2		N30M300-000014-000

图13 起升组件 Fig.13 Lifting part	1.0t-1.8t 2级全自由门架 DUPLEX MAST					
	序号 Item	物料码 Part No	名称 Description	数量 Qty	备注或适用车型 Remarks or Serial NO	原物料码 Original Part No
	29	209500270062	螺栓组件	1		XR30M300-003000-000
	30	See Fig.9	倾斜油缸	2		
	31	209500020005	复合滚轮组 Complex rolle assv	2	图 I Fig.I	XR15M300-007000-000
	32	209500050002	复合滚轮组 Complex rolle assy	2	图 I Fig.I	XR15M300-006000-000



选配表7<Optional Parts List 7>

序号 Item	起升高度 Lift Height	1			2	
		物料码 Part No.	原物料码 Original Part No.	物料码 Part No.	原物料码 Original Part No.	
2000	2000	20955000627	XR15U200-100000-000	20965000602	XR15U200-200000-000	
2500	2500	20955000628	XR15U250-100000-000	20965000603	XR15U250-200000-000	
2700	2700	20955000629	XR15U270-100000-000	20965000604	XR15U270-200000-000	
3000	3000	20955000437	XR15U300-100000-000	20965000431	XR15U300-200000-000	
3300	3300	20955000630	XR15U330-100000-000	20965000605	XR15U330-200000-000	
3500	3500	20955000631	XR15U350-100000-000	20965000606	XR15U350-200000-000	
3600	3600	20955000632	XR15U360-100000-000	20965000607	XR15U360-200000-000	
3700	3700	20955000633	XR15U370-100000-000	20965000608	XR15U370-200000-000	
4000	4000	20955000634	XR15U400-100000-000	20965000609	XR15U400-200000-000	

图14 货叉架总成
Fig.14 Fork shelf assy

1.0t-1.5t 2级全自由门架 DUPLEX MAST

序号 Item	物料码 Part No	名称 Description	数量 Qty	备注或适用车型 Remarks or Serial NO	原物料码 Original Part No
A	209700001160	货叉架总成	1	1.0t-1.5t	XR15U300-300000-000
1	209700001129	货叉架	1		XR15U300-301000-000
2	209500070003	侧滚轮组	2	图 III Fig.III	XR15M300-302000-000

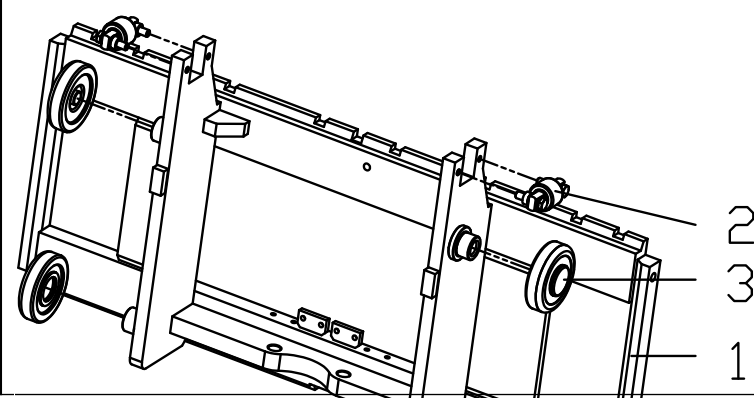
	3	209500050003	复合滚轮组 Complex rolle assv	2	图 I Fig.I	XR15M300-304000-000
	4	209500020005	复合滚轮组 Complex rolle assv	2	图 I Fig.I	XR15M300-007000-000

图15 货叉架总成 Fig.15 Fork shelf assy		1.8t 2级全自由门架 DUPLEX MAST				
序号 Item	物料码 Part No	名称 Description	数量 Qty	备注或适用车型 Remarks or Serial NO	原物料码 Original Part No	
A	209700001161	货叉架总成	1	1.8t	XR18U300-300000-000	
1	209700001130	货叉架	1		XR18U300-301000-000	

	2	209500070003	侧滚轮组 Side roller assy	2	图 III Fig.III	XR15M300-302000-000
	3	209500050003	复合滚轮组 Complex rolle assv	2	图 I Fig.I	XR15M300-304000-000
	4	209500020005	复合滚轮组 Complex rolle assv	2	图 I Fig.I	XR15M300-007000-000
	5	209500020004	复合滚轮组 Complex rolle assv	2	图II Fig.II	XR18M300-303000-000

图16 链条总成 Fig.16 Chain assy	2级全自由门架 DUPLEX MAST					
	序号 Item	物料码 Part No	名称 Description	数量 Qty	备注或适用车型 Remarks or Serial NO	原物料码 Original Part No
	A1	See OP.Parts 8	链条总成 Chain assy	1	1.0t-1.5t	

	A2	See OP.Parts 8	链条总成	1	1.8t	
	1	NO PART NO.	板式链LH1223×N	1	1.0t-1.5t	
	1	NO PART NO.	板式链LH1234×N	1	1.8t	
	2	300050010027	销3.2×25	2		G000091-3P2020-00
	3	NO PART NO.	销轴	2	1.0t-1.5t	
	3	NO PART NO.	销轴	2	1.8t	
	4	NO PART NO.	链条接头	1	1.0t-1.5t	
	4	NO PART NO.	链条接头	1	1.8t	
	5	300050010046	销4×35	2		G000091-004035-00
	6	300020020007	螺母M16×1.5	5		G006171-000016-02
	7	NO PART NO.	链条接头	1	1.0t-1.5t	
	7	NO PART NO.	链条接头	1	1.8t	

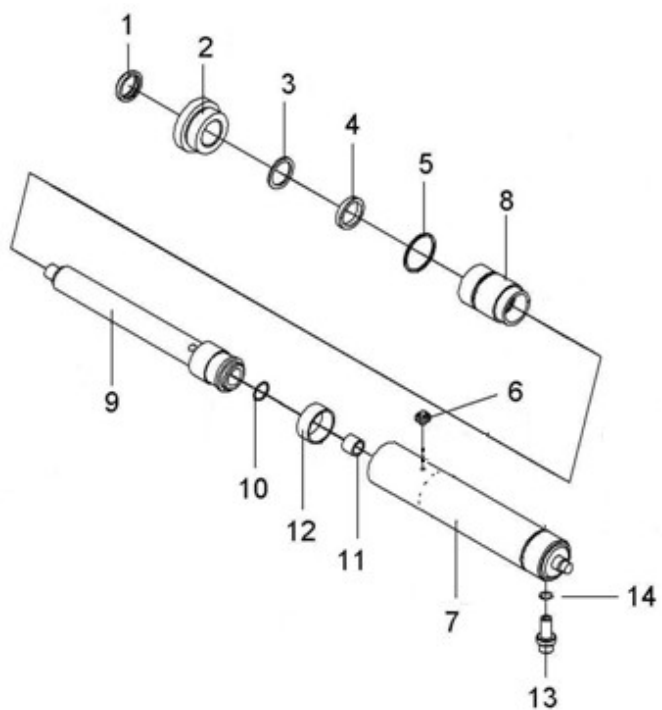
选配表8 <Optional Parts List 8>

序号 Item	A1(1.0t-1.5t)		A2(1.8t)	
	物料码 Part No.	原物料码 Original Part No.	物料码 Part No.	原物料码 Original Part No.
起升高度 Lift Height				

2000	209500190182	LH-1223053-100	209500191076	LH-1234045-100
2500	209500190181	LH-1223065-100	209500190195	LH-1234055-100
2700	209500191071	LH-1223071-100	209990024391	LH-1234059-100
3000	209500190181	LH-1223065-100	209500190904	LH-1234065-100
3300	209500191061	LH-1223087-100	209500190004	LH-1234071-100
3500	209500190018	LH-1223091-100	209500190108	LH-1234075-100
3600	209500190074	LH-1223095-100	209500190109	LH-1234077-100
3700	209500190045	LH-1223097-100	209500191082	LH-1234079-100
4000	209500190014	LH-1223105-100	209500190016	LH-1234085-100

图17 右升降油缸/Lift cylinder,Right
Fig.17 左升降油缸/Lift cylinder,Left

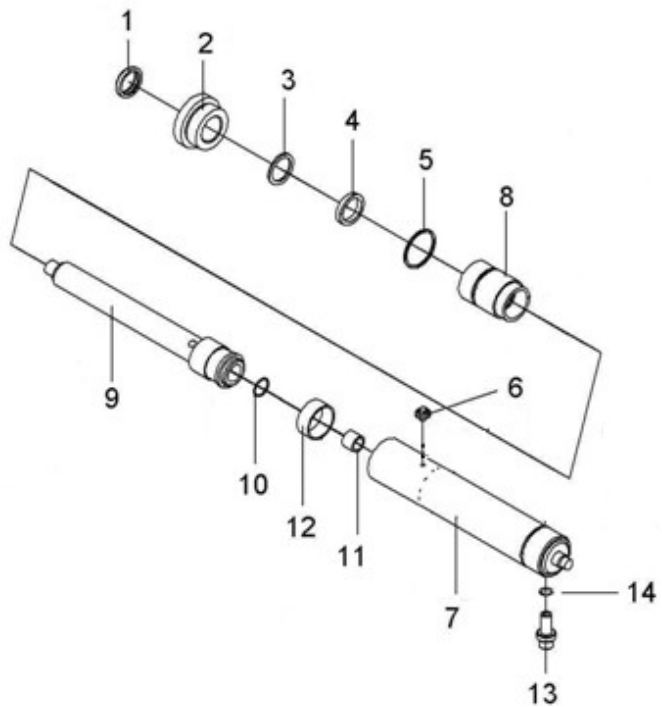
2级全自由门架 DUPLEX MAST



序号 Item	物料码 Part NO	名称 Description	数量 Qty	备注或适用车型 Remarks or Serial NO	原物料码 Original Part No
A1	See OP.Parts 9	右升降油缸	1		
A2	See OP.Parts 9	左升降油缸	1		
1	209990000123	LBH防尘圈d32	1		CL0363C0-G00
2	209800040077	缸盖	1		XR15U300-400001-W00
3	209800090112	挡片	1		X15U300-400004-W00
4	204100070381	IDI型密封圈d32	1		FU0404F0-G00
5	300130010086	O形密封圈48×3.5	1		G001235-004803P5-00
6	209800090845	放气螺塞	1		N30U300-405000-000
7	See OP.Parts 9	缸体	1		
8	205100040019	复合衬套3230	1		SF-1-3230-G00
9	See OP.Parts 9	右柱塞杆	1		
9	See OP.Parts 9	左柱塞杆	1		
10	300060050010	挡圈 22	1		G0895P1-000022-00
11	209800090285	阀套	1		N15U300-400001-W01
12	209800090708	支承环	1		1.5U3H-400003

图17 右升降油缸/Lift cylinder,Right
 Fig.17 左升降油缸/Lift cylinder,Left

2级全自由门架 DUPLEX MAST



序号 Item	物料码 Part NO	名称 Description	数量 Qty	备注或适用车型 Remarks or Serial NO	原物料码 Original Part No
13	209800090111	安全阀组件The module	1	右升降油缸	X15U300-403000-W00
14	300130010070	O形密封圈20×2.4	1	右升降油缸	G001235-002002P4-00
K1	820020000019	左右缸修理包	2	For (1-1.8t):	XR15U300-4/5-000-Kit

--	--	--	--	--	--

选配表9 <Optional Parts List 9>

序号 Item	A1	A2	7, 缸体 Cylinder body	9, 右柱塞杆 Pole stopper rod , R	9, 左柱塞杆 Pole stopper rod , L
起升高度 Lift Height	物料码 Part NO.	物料码 Part NO.	物料码 Part NO.	物料码 Part NO.	物料码 Part NO.
2000	209800002311	209800002319	209800012040	209800021325	209800021333
2500	209800002312	209800002320	209800012041	209800021326	209800021334
2700	209800002313	209800002313	209800012479	209800021629	209800021630
3000	209800001937	209800001973	209800011655	209800021081	209800021090
3300	209800002314	209800002322	209800012480	209800021631	209800021632
3500	209800002315	209800002323	209800012044	209800021329	209800021337
3600	209800002316	209800002324	209800012045	209800021330	209800021338
3700	209800002317	209800002325	209800012046	209800021331	209800021339
4000	209800002318	209800002326	209800012047	209800021332	209800021340

选配表9 <Optional Parts List 9>

序号 Item	A1	A2	7, 缸体 Cylinder body	9, 右柱塞杆 Pole stopper rod , R	9, 左柱塞杆 Pole stopper rod , L
起升高度 Lift Height	原物料码 Original Part No.	原物料码 Original Part No.	原物料码 Original Part No.	原物料码 Original Part No.	原物料码 Original Part No.
2000	XR15U200-400000-000	XR15U200-500000-000	XR15U200-401000-W00	XR15U200-402000-W00	XR15U200-502000-W00
2500	XR15U250-400000-000	XR15U250-500000-000	XR15U250-401000-W00	XR15U250-402000-W00	XR15U250-502000-W00
2700	XR15U270-400000-000	XR15U270-400000-000	XR15U270-401000-W00	XR15U270-402000-W00	XR15U270-502000-W00
3000	XR15U300-400000-000	XR15U300-500000-000	XR15U300-401000-W00	XR15U300-402000-W00	XR15U300-502000-W00
3300	XR15U330-400000-000	XR15U330-500000-000	XR15U330-401000-W00	XR15U330-402000-W00	XR15U330-502000-W00
3500	XR15U350-400000-000	XR15U350-500000-000	XR15U350-401000-W00	XR15U350-402000-W00	XR15U350-502000-W00
3600	XR15U360-400000-000	XR15U360-500000-000	XR15U360-401000-W00	XR15U360-402000-W00	XR15U360-502000-W00
3700	XR15U370-400000-000	XR15U370-500000-000	XR15U370-401000-W00	XR15U370-402000-W00	XR15U370-502000-W00
4000	XR15U400-400000-000	XR15U400-500000-000	XR15U400-401000-W00	XR15U400-402000-W00	XR15U400-502000-W00

图 18 短升降油缸
Fig.18 Lift cylinder, Short

2级全自由门架, 3级全自由门架
DUPLEX MAST , TRIPLEX MAST

序号 Item	物料码 Part NO	名称 Description	数量 Qty	备注或适用车型 Remarks or Serial NO	原物料码 Original Part No
A1	See OP.Parts 10	短升降油缸	1	2级全自由门架 DUPLEX	
A2	See OP.Parts 10	短升降油缸	1	3级全自由门架 TRIPLEX	
1	209800090188	安全阀	1		RC25N450-802000-W00
2	See OP.Parts 10	缸体	1		
3	300060010023	挡圈 28	1		G0893P1-000028-00
4	209800090191	单向阀	1		RC25N450-803000-W00
5	300130010090	O形密封圈 26×2.4	1		G001235-002602P4-00
6	209800080012	WR抗磨环75×65×20	1		X15N450-800009-G00
7	300030140011	垫圈 6	1		J000982-000006-00
8	300040070030	螺钉M6×8	1		G000818-006008-00

	9	209990000252	格莱圈D70	1		PT0300700-T46NA-G00
	10	209800050018	活塞	1		X15N450-800004-W00
	11	209800090194	钢丝挡圈φ3	1		RC25N450-800005-W00
	12	209800090193	钢管	1		RC25N450-800006-W00
	13	See OP.Parts 10	活塞杆	1		

图 18 短升降油缸 Fig.18 Lift cylinder, Short	2级全自由门架, 3级全自由门架 DUPLEX MAST , TRIPLEX MAST					
	序号 Item	物料码 Part NO	名称 Description	数量 Qty	备注或适用车型 Remarks or Serial NO	原物料码 Original Part No
	14	300130010131	O形密封圈70×3.1	1		G001235-007003P1-00
	15	209800030018	复合衬套	1		X15N450-800008-G00
	16	300130010122	O形密封圈75×3.1	1		G001235-007503P1-00
	17	209800040011	缸盖	1		X15N450-800003-W00
	18	204100070392	ISI密封圈d55	1		FU0694K0-G00
	19	209800090113	保护圈70×60×2	1		X15N450-800002-W00
	20	209990000128	LBH防尘圈d55	1		CL0104C0-G00
	K1	820020000012	短缸修理包	1	For (1-1.8t):	X15N450-8-000-Kit

选配表10 <Optional Parts List 10>

序号 Item	A1	2	13
起升高度 Lift Height	物料码 Part NO.	物料码 Part NO.	物料码 Part NO.
2级全自由门架DUPLICATE MAST			
2000	209800002803	209800012470	209800021620
2500	209800002804	209800012471	209800021621
2700	209800002302	209800012031	209800021315
3000	209800001874	209800011656	209800021059
3300	209800002304	209800012033	209800021317
3500	209800002305	209800012034	209800021318
3600	209800002808	209800012475	209800021625
3700	209800002809	209800012476	209800021626
4000	209800002810	209800012477	209800021627
3级全自由门架 TRIPLEX MAST			
4000	209800002302	209800012031	209800021315
4300	209800002303	209800012032	209800021316

4500	209800002811	209800012478	209800021628
4700	209800002304	209800012033	209800021317
4800	209800002304	209800012033	209800021317
5000	209800002305	209800012034	209800021318
5500	209800002306	209800012035	209800021319
6000	209800002307	209800012036	209800021320
6500	209800002308	209800012037	209800021321
7000	209800002309	209800012038	209800021322
7500	209800002310	209800012039	209800021323

选配表10 <Optional Parts List 10>

序号 Item	A1	2	13
起升高度 Lift Height	原物料码 Original Part No.	原物料码 Original Part No.	原物料码 Original Part No.
2级全自由门架DUPLICATE MAST			
2000	X15U200-800000-000	X15U200-801000-W00	X15U200-800001-W00
2500	X15U250-800000-000	X15U250-801000-W00	X15U250-800001-W00
2700	X15N430-800000-000	X15N430-801000-W00	X15N430-800001-W00
3000	XR15U300-800000-000	XR15U300-801000-W00	XR15U300-800001-W00
3300	X15N500-800000-000	X15N500-801000-W00	X15N500-800001-W00
3500	X15U350-800000-000	X15U350-801000-W00	X15U350-800001-W00
3600	X15U360-800000-000	X15U360-801000-W00	X15U360-800001-W00
3700	X15U370-800000-000	X15U370-801000-W00	X15U370-800001-W00
4000	X15U400-800000-000	X15U400-801000-W00	X15U400-800001-W00
3级全自由门架 TRIPLEX MAST			
4000	X15N430-800000-000	X15N430-801000-W00	X15N430-800001-W00

4300	XR15N430-800000-000	XR15N430-801000-W00	XR15N430-800001-W00
4500	X15N480-800000-000	X15N480-801000-W00	X15N480-800001-W00
4700	X15N500-800000-000	X15N500-801000-W00	X15N500-800001-W00
4800	X15N500-800000-000	X15N500-801000-W00	X15N500-800001-W00
5000	X15U350-800000-000	X15U350-801000-W00	X15U350-800001-W00
5500	XR15N550-800000-000	XR15N550-801000-W00	XR15N550-800001-W00
6000	X15N650-800000-000	X15N650-801000-W00	X15N650-800001-W00
6500	X15N700-800000-000	X15N700-801000-W00	X15N700-800001-W00
7000	XR15N700-800000-000	XR15N700-801000-W00	XR15N700-800001-W00
7500	XR15N750-800000-000	XR15N750-801000-W00	XR15N750-800001-W00

图 19 油路系统 Fig.19 Mast piping		2级全自由门架 DUPLEX MAST				
	序号 Item	物料码 Part NO	名称 Description	数量 Qty	备注或适用车型 Remarks or Serial NO	原物料码 Original Part No
	1	209990000938	胶管接头	1		JGG-10A00372A0-000
	2	209850060089	直通管接头 Nibble	1		X25N450-200001-000
	3	209850060169	三通接头	1		RC25U300-704000-000
	4	300130010070	O形密封圈20×2.4	1		G001235-002002P4-00
	5	300130010134	O形密封圈24×2.4	2		G001235-002402P4-00
	6	209850060171	直通管接头	1		RC25U300-700002-000
	7	206200110006	单向限速阀	1		XSF2-F16L-1.5/40-G00
	8	209990000937	胶管接头	1		JGG-13A00480Z5-000

	9	See OP.Parts 11	胶管接头	1		
	10	209850080108	管夹	2		2.5U3H-600004
	11	209500270220	螺栓M8×1.25×16	3		N30M300-003000-000
	12	300030040014	垫圈8	5		G0097P1-000008-00
	13	See OP.Parts 11	钢油管	1		
	14	209850090295	堵塞	1		N30U300-700007-000
	15	300290010006	喉箍16	1		JT08870-0160000000-00

图 19 油路系统 Fig.19 Mast piping		2级全自由门架 DUPLEX MAST				
序号 Item	物料码 Part NO	名称 Description	数量 Qty	备注或适用车型 Remarks or Serial NO	原物料码 Original Part No	
	16	直通管接头 Nipple	1		2.5U3H-600006A	
	17	垫圈18	1		J000982-000018-00	
	18	油管护罩	1		XR30M300-701001-000	
	19	螺栓M8×25	1		G005783-008025-00	
	20	螺母M8	1		G006170-000008-00	
	21	接头	1		N15M300-700010-000	

	-				

选配表11 <Optional Parts List 11>

序号 Item	9		13	
起升高度 Lift Height	物料码 Part No	原物料码 Original Part No.	物料码 Part No	原物料码 Original Part No.
2000	209850060700	JGG-13A00365Z9-000	209850071601	XR30U200-701000-000
2500	209850060701	JGG-13A00435Z9-000	209850071602	XR30U250-701000-000
2700			209850071603	XR30U270-701000-000
3000			209850071136	2.5U3H-601000A
3300			209850070004	2.5U3.3H-501000A
3500			209850070005	2.5U3.5H-501000A
3600			209850071613	2.5U3.6H-501000A
3700			209850071614	2.5U3.7H-501000A
4000			209850071615	2.5U4H-501000A

图20 侧移油路
Fig.20 lateral moving circuit

2级全自由门架 DUPLEX MAST

	序号 Item	物料码 Part NO	名称 Description	数量 Qty	备注或适用车型 Remarks or Serial NO	原物料码 Original Part No
	A1	See OP.Parts 12	侧移油路	1		
	1	209850050077	滑轮护板	1		XR15V450-911000-000
	2	300030010015	垫圈 8	7		G000093-000008-00

	3	300040020096	螺钉M8×16	1		G000070-008016-00
	4	300030040014	垫圈 8	3		G0097P1-000008-00
	5	209850090786	支架	1		XR15V450-912000-000
	6	209850090790	销轴	1		XR15V450-913000-000
	7	300010040145	螺栓M6×12	1		G005783-006012-00
	8	300030010014	垫圈 6	1		G000093-000006-00
	9	209850050074	滑轮	2		XR30V450-910001-000
	10	300040020074	螺钉M10×25	10		G000070-010025-00
	11	300030010001	垫圈 10	10		G000093-000010-00
	12	300030040002	垫圈 10	10		G0097P1-000010-00
	13	209850090775	套	1		XR15V450-910002-000
	14	See OP.Parts 12	胶管接头	1		

图20 侧移油路 Fig.20 lateral moving circuit	2级全自由门架 DUPLEX MAST					
	序号 Item	物料码 Part NO	名称 Description	数量 Qty	备注或适用车型 Remarks or Serial NO	原物料码 Original Part No
	15	See OP.Parts 12	胶管接头	1		
	16	209850080129	管夹	1		XR15B300-920001-000

	17	206500040044	盖板	1		RT500-650006-000
	18	300040020101	螺钉M8×35	1		G000070-008035-00
	19	209850090738	固定板	1		XR15C300-911000-000
	20	209990023131	管夹组件	1		AH35H300-904000-000
	20-1	209990023365	管夹	2		AH35H300-904001-000
	20-2	209990023366	橡胶垫	4		AH35H300-904002-000
	20-3	300040020100	螺钉M8×30	2		G000070-008030-00
	21	209850060598	90°管接头 90°Elbow	2		XR15B300-904000-000
	22	209850060616	胶管接头	1		JGG-08B00320A0-000
	23	209850060656	胶管接头	1		JGG-08B00550Z3-000
	24	209850020014	接头支座	1		X15V450-907000-000
	25	300040020098	螺钉M8×25	2		G000070-008025-00
	26	209990023141	连接板	1		AH35H300-907001-000

图20 侧移油路 Fig.20 lateral moving circuit	2级全自由门架 DUPLEX MAST					
	序号 Item	物料码 Part NO	名称 Description	数量 Qty	备注或适用车型 Remarks or Serial NO	原物料码 Original Part No
	27	See OP.Parts 12	钢油管	1		

28	209990023400	管夹组件	1		AH35H300-901000-000
28-1	209990023140	管夹	1		AH35H300-901001-000
28-2	300030010013	垫圈 5	2		G000093-000005-00
28-3	300040020127	螺钉M5×12	2		G000070-005012-00
29	See OP.Parts 12	外门架滑导	1		
30	300010040173	螺栓M8×20	2		G005783-008020-00
31	209850060754	直通接头	1		XR15V450-900005-000
32	300130010089	O形密封圈22×2.4	2		G001235-002202P4-00
33	209850060618	胶管接头	1		JGG-08B00770Z0-000
34	209850060619	胶管接头	1		JGG-08B00700Z0-000
35	209850060167	直通接头	1		RC25V450-900006-000
备注：安装第四联油路时，序号14、15、20、28取消。					

选配表12 <Optional Parts List 12>

序号 Item	A1	14	15	27	29
起升高度 Lift	物料码 Part NO.	物料码 Part NO.	物料码 Part NO.	物料码 Part NO.	物料码 Part NO.

Height					
2000	209850001761	209850061048	209850061056	209850071616	209850090844
2500	209850001762	209850061049	209850061057	209850071617	209850090845
2700	209850001763	209850061050	209850061058	209850071618	209850090846
3000	209850001251	209850060690	209850060691	209850040755	209990023135
3300	209850001764	209850061051	209850061059	209850071619	209850090847
3500	209850001765	209850061052	209850061060	209850071620	209850090848
3600	209850001766	209850061053	209850061061	209850071621	209850090849
3700	209850001767	209850061054	209850061062	209850071622	209850090850
4000	209850001768	209850061055	209850061063	209850071623	209850090851

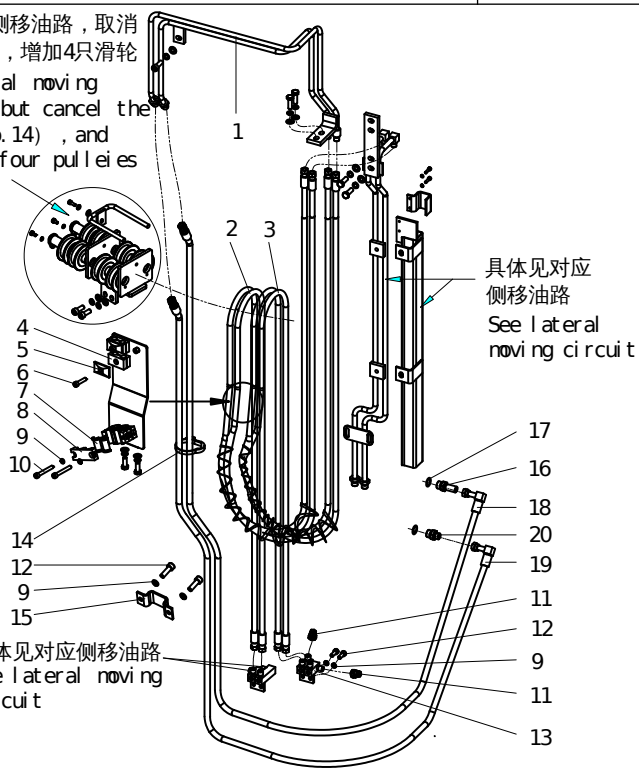
选配表12 <Optional Parts List 12>

序号 Item	A1	14	15	27	29
起升高度 Lift Height	原物料码 Original Part No.	原物料码 Original Part No.	原物料码 Original Part No.	原物料码 Original Part No.	原物料码 Original Part No.
2000	XR15C200-900000-000	XR15C200-905000-000	XR15C200-906000-000	XR15C200-903000-000	AH35H200-902000-000
2500	XR15C250-900000-000	XR15C250-905000-000	XR15C250-906000-000	XR15C250-903000-000	AH35H250-902000-000
2700	XR15C270-900000-000	XR15C270-905000-000	XR15C270-906000-000	XR15C270-903000-000	AH35H270-902000-000
3000	XR15C300-900000-000	XR15C300-905000-000	XR15C300-906000-000	XR15C300-903000-000	AH35H300-902000-000
3300	XR15C330-900000-000	XR15C330-905000-000	XR15C330-906000-000	XR15C330-903000-000	AH35H330-902000-000
3500	XR15C350-900000-000	XR15C350-905000-000	XR15C350-906000-000	XR15C350-903000-000	AH35H350-902000-000
3600	XR15C360-900000-000	XR15C360-905000-000	XR15C360-906000-000	XR15C360-903000-000	AH35H360-902000-000
3700	XR15C370-900000-000	XR15C370-905000-000	XR15C370-906000-000	XR15C370-903000-000	AH35H370-902000-000
4000	209850001768	XR15C400-905000-000	XR15C400-906000-000	XR15C400-903000-000	AH35H400-902000-000

图21 第四联油路
Fig.21 Fourth oil

2级全自由门架 DUPLEX MAST

此处参照侧移油路，取消套（序4），增加4只滑轮
See lateral moving circuit, but cancel the cover (Nb.14), and increase four pulleys



序号 Item	物料码 Part NO	名称 Description	数量 Qty	备注或适用车型 Remarks or Serial NO	原物料码 Original Part No
A1	See OP.Parts 13	第四联油路The fourth	1		
1	209850071501	钢油管	1		XR15C300-808000-000
2	See OP.Parts 13	胶管接头	1		
3	See OP.Parts 13	胶管接头	1		
4	209850080129	管夹 Tube folder	1		XR15B300-920001-000
5	206500040044	盖板	1		RT500-650006-000
6	300040020101	螺钉M8×35	1		G000070-008035-00
7	209990023366	橡胶垫	8		AH35H300-904002-000
8	209990023365	管夹	4		AH35H300-904001-000
9	300030010015	垫圈 8	6		G000093-000008-00
10	300040020147	螺钉M8×60	2		G000070-008060-00

	11	209850090773	闷盖	2		XR15V450-805000-000
	12	300040020098	螺钉M8×25	4		G000070-008025-00
	13	209850060746	接头支座	1		XR15V450-871000-000
	14	209850090725	抱箍组件	1		XR15B300-901000-000

图21 第四联油路 Fig.21 Fourth oil	2级全自由门架 DUPLEX MAST					
	序号 Item	物料码 Part NO	名称 Description	数量 Qty	备注或适用车型 Remarks or Serial NO	原物料码 Original Part No
	15	209990023363	管夹	1		AH35H300-802001-000
	16	209850060754	直通接头	1		XR15V450-900005-000
	17	300130010089	O形密封圈22×2.4	2		G001235-002202P4-00
	18	See OP.Parts 13	胶管接头	1		
	19	See OP.Parts 13	胶管接头	1		
	20	209850060167	直通接头	1		RC25V450-900006-000

选配表13 <Optional Parts List 13>

序号 Item	A1	2	3	18	19
起升高度 Lift Height	物料码 Part NO.	物料码 Part NO.	物料码 Part NO.	物料码 Part NO.	物料码 Part NO.
2000	209850001751	209850061032	209850061040	209850061016	209850061024
2500	209850001752	209850061033	209850061041	209850061017	209850061025
2700	209850001753	209850061034	209850061042	209850061018	209850061026
3000	209850001275	209850060685	209850060684	209850060686	209850060687
3300	209850001754	209850061035	209850061043	209850061019	209850061027
3500	209850001755	209850061036	209850061044	209850061020	209850061028
3600	209850001756	209850061037	209850061045	209850061021	209850061029
3700	209850001757	209850061038	209850061046	209850061022	209850061030
4000	209850001718	209850061039	209850061047	209850061023	209850061031

序号 Item	A1	2	3	18	19
起升高度	原物料码	原物料码	原物料码	原物料码	原物料码

Lift Height	Original Part No.	Original Part No.	Original Part No.	Original Part No.	Original Part No.
2000	XR15C200-800000-000	XR15C200-805000-000	XR15C200-806000-000	209850061016	JGG-08B01500Z0-000
2500	XR15C250-800000-000	XR15C250-805000-000	XR15C250-806000-000	209850061017	JGG-08B01750Z0-000
2700	XR15C270-800000-000	XR15C270-805000-000	XR15C270-806000-000	209850061018	JGG-08B01850Z0-000
3000	XR15C300-800000-000	XR15C300-805000-000	XR15C300-806000-000	209850060686	JGG-08B02000Z0-000
3300	XR15C330-800000-000	XR15C330-805000-000	XR15C330-806000-000	209850061019	JGG-08B02150Z0-000
3500	XR15C350-800000-000	XR15C350-805000-000	XR15C350-806000-000	209850061020	JGG-08B02250Z0-000
3600	XR15C360-800000-000	XR15C360-805000-000	XR15C360-806000-000	209850061021	JGG-08B02300Z0-000
3700	XR15C370-800000-000	XR15C370-805000-000	XR15C370-806000-000	209850061022	JGG-08B02350Z0-000
4000	XR15C400-800000-000	XR15C400-805000-000	XR15C400-806000-000	209850061016	JGG-08B02550Z0-000

图22 起升组件 Fig.22 Lifting part		3级全自由门架TRIPLEX MAST				
序号 Item	物料码 Part NO	名称 Description	数量 Qty	备注或适用车型 Remarks or Serial NO	原物料码 Original Part No	
1	See Fig.23	门架	1			
2	See Fig.26 A1	链条总成	2			
3	209500270064	螺栓组件	2		XR30M300-002000-000	
4	209500270247	油缸调整垫圈	2组		N15M300-000012-000	
5	208850010013	链轮	2		780708-G00	
6	300060030016	挡圈 40	4		G0894P1-000040-00	
7	See Fig.28	油路系统	1			
8	209750010106	挡货架	1		N15M300-020000-002	

	9	209500270084	销轴	4		X15M300-002000-000
	10	300170040002	油杯M10×1	4		G001152-010001-00
	11	209500270217	螺栓M10×1.25×20	4		N30M300-004000-000
	12	See Fig.27	右升降油缸	1	对称位置 Position symmetry	
	13	See Fig.27	左升降油缸	1		
	14	209500240106	货叉总成	2		N15M300-010000-000
15	See Fig.24	货叉架总成	1	1.0t-1.5t		

图22 起升组件 Fig.22 Lifting part		3级全自由门架TRIPLEX MAST				
序号 Item	物料码 Part NO	名称 Description	数量 Qty	备注或适用车型 Remarks or Serial NO	原物料码 Original Part No	
15	See Fig.25	货叉架总成	1	1.8t		
15	See Fig.6	侧移架总成	1			
16	209500270066	螺钉组件	2		XR15M300-003000-000	
17	209500270218	螺栓M14×1.5×30	4		N30M300-006000-000	
18	See Fig.18	短升降油缸	1			
19	See Fig.V	链条座	1			
20	See Fig.26 A2	链条总成	2			

	21	209500140030	链轮护板	2		XR15N450-004000-000
	22	209500160007	油缸抱箍	2		XR15M300-001000-000
	23	209500170128	油缸抱箍	1		XR15N450-002000-000
	23-1	300030010002	垫圈 12	2		G000093-000012-00
	23-2	300010040030	螺栓M12×20	2		G005783-012020-00
	23-3	300030040003	垫圈 12	2		G0097P1-000012-00
	23-4	209500170011	油缸固定板	1		X15N450-000001-000
	24	209500270063	螺钉组件	1		XR30M300-004000-000

图22 起升组件 Fig.22 Lifting part		3级全自由门架TRIPLEX MAST				
序号 Item	物料码 Part NO	名称 Description	数量 Qty	备注或适用车型 Remarks or Serial NO	原物料码 Original Part No	
25	209500270766	螺钉组件	1		XR15N450-005000-000	
26	See Fig.9	倾斜油缸	2	See OP.Parts 15		

图23 门架 Fig.23 Mast	3级全自由门架TRIPLEX MAST					
	序号 Item	物料码 Part NO	名称 Description	数量 Qty	备注或适用车型 Remarks or Serial NO	原物料码 Original Part No
	1	209500050002	复合滚轮组 Complex rolle assv	4	图 I Fig.I	XR15M300-006000-000
	2	See OP.Parts 14	外门架	1		
	3	See OP.Parts 14	内门架	1		
	4	See OP.Parts 14	中门架	1		
	5	300170040002	油杯M10×1	2		G001152-010001-00

	6	209500270252	轴瓦	2		N15M300-000006-000
	7	209500020005	复合滚轮组 Complex rolle assv	2	图 I Fig.I	XR15M300-007000-000
	8	209500270211	导轨衬垫	4		N30M300-000014-000
	9	209500270224	调整垫片	4组		N30M300-000015-000

选配表14 <Optional Parts List 14>

序号 Item	2	3	4
起升高度 Lift Height	物料码 Part NO.	物料码 Part NO.	物料码 Part NO.
4000	209550000617	209650000592	209600000107
4300	209550000618	209650000593	209600000108
4500	209550011053	209650000412	209600000064
4700	209550000619	209650000594	209600000109

4800	209550000620	209650000595	209600000110
5000	209550000621	209650000596	209600000111
5500	209550000622	209650000597	209600000112
6000	209550000623	209650000598	209600000113
6500	209550000624	209650000599	209600000114
7000	209550000625	209650000600	209600000115
7500	209550000626	209650000601	209600000116

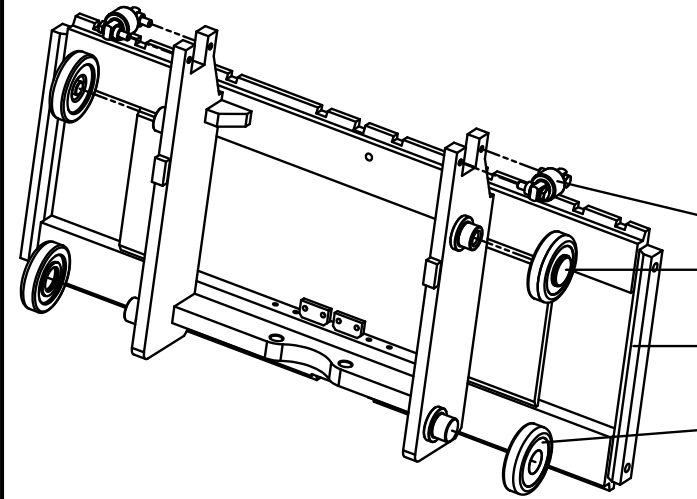
选配表14 <Optional Parts List 14>

序号 Item	2	3	4
起升高度 Lift Height	原物料码 Original Part No.	原物料码 Original Part No.	原物料码 Original Part No.
4000	XR15N400-101000-000	XR15N400-102000-000	XR15N400-103000-000

4300	XR15N430-101000-000	XR15N430-102000-000	XR15N430-103000-000
4500	XR15N450-101000-000	XR15N450-102000-000	XR15N450-103000-000
4700	XR15N470-101000-000	XR15N470-102000-000	XR15N470-103000-000
4800	XR15N480-101000-000	XR15N480-102000-000	XR15N480-103000-000
5000	XR15N500-101000-000	XR15N500-102000-000	XR15N500-103000-000
5500	XR15N550-101000-000	XR15N550-102000-000	XR15N550-103000-000
6000	XR15N600-101000-000	XR15N600-102000-000	XR15N600-103000-000
6500	XR15N650-101000-000	XR15N650-102000-000	XR15N650-103000-000
7000	XR15N700-101000-000	XR15N700-102000-000	XR15N700-103000-000
7500	XR15N750-101000-000	XR15N750-102000-000	XR15N750-103000-000

图24 货叉架总成
Fig.24 Fork shelf assy

1.0t-1.5t 3级全自由门架TRIPLEX MAST

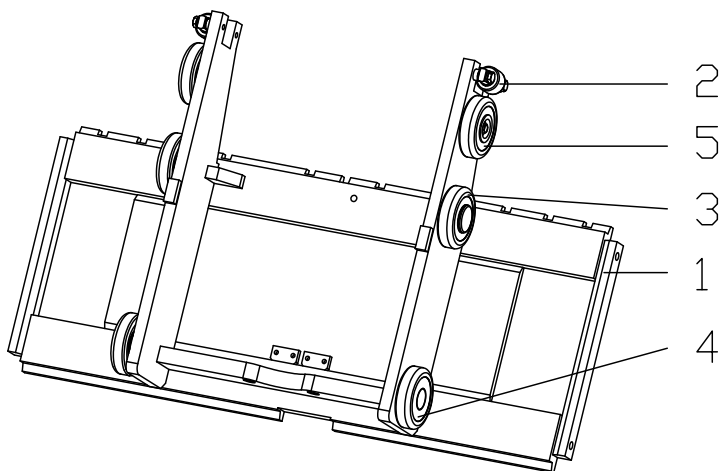


2
3
1
4

序号 Item	物料码 Part NO	名称 Description	数量 Qty	备注或适用车型 Remarks or Serial NO	原物料码 Original Part No
A	209700001160	货叉架总成	1	1.0t-1.5t	XR15U300-300000-000
1	209700001129	货叉架	1		XR15U300-301000-000
2	209500070003	侧滚轮组	2	图 III Fig.III	XR15M300-302000-000
3	209500050003	复合滚轮组 Complex rolle assv	2	图 I Fig.I	XR15M300-304000-000
4	209500020005	复合滚轮组 Complex rolle assv	2	图 I Fig.I	XR15M300-007000-000

图25 货叉架总成
Fig.25 Fork shelf assy

1.8t 3级全自由门架 TRIPLEX MAST



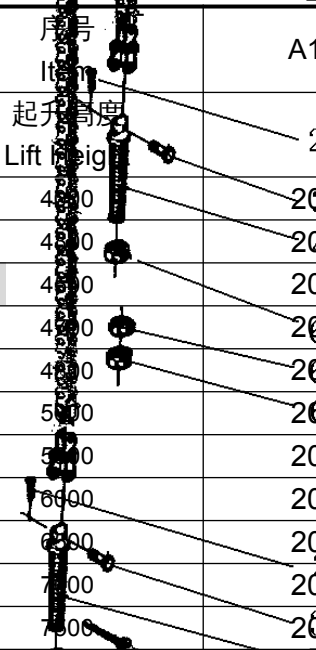
序号 Item	物料码 Part No	名称 Description	数量 Qty	备注或适用车型 Remarks or Serial NO	原物料码 Original Part No
A	209700001156	货叉架总成	1	1.8t	XR18N450-300000-000
1	209700001122	货叉架	1		XR18N450-301000-000
2	209500070003	侧滚轮组	2	图 III Fig.III	XR15M300-302000-000
3	209500050003	复合滚轮组 Complex rolle assv	2	图 I Fig.I	XR15M300-304000-000
4	209500020005	复合滚轮组 Complex rolle assv	2	图 I Fig.I	XR15M300-007000-000
5	209500020004	复合滚轮组 Complex rolle assv	2	图II Fig.II	XR18M300-303000-000

图 26 链条总成
Fig.26 Chain assy

3级全自由门架TRIPLEX MAST

序号 Item	物料码 Part NO	名称 Description	数量 Qty	备注或适用车型 Remarks or Serial NO	原物料码 Original Part No
A1	See OP.Parts 15	链条总成	2	左右 Ringht&Lfet	
1	NO PART NO.	板式链LH1223×N	1	1.0t-1.5t	
1	NO PART NO.	板式链LH1234×N	1	18t	
A2	See OP.Parts 15	链条总成	2	中间 Middle	
1	NO PART NO.	板式链LH1223×N	1	1.0t-1.5t	
1	NO PART NO.	板式链LH1234×N	1	1.8t	
2	300050010046	销4×35	2		G000091-004035-00
3	NO PART NO.	销轴	2		
4	NO PART NO.	链条接头 1 Connector 1	2		
5	209500200010	销3.2×35	2		RC25M300-030001-000
6	300020020007	螺母M16×1.5	5		G006171-000016-02
7	NO PART NO.	链条接头2	2		

选配表15<Optional Parts List 15>



序号 Item	A1 (1.0t-1.5t)	A1 (1.8t)	A2 (1.0t-1.5t)	A2 (1.8t)
起升高度 Lift Height	物料码 Part NO.	物料码 Part NO.	物料码 Part NO.	物料码 Part NO.
4200	209500191049	209500190030	209500191071	209500190004
4200	209500190074	209500191085	209500190062	209500190108
4500	209500190045	209500190079	209500190160	209500190897
4500	209500190059	209500190110	209500191061	209500191096
4500	209500190014	209990022817	209500191061	209500191096
5000	209500191038	209500190072	209500190018	209500191097
5200	209500190043	209500190026	209500190134	209500190131
6000	209500190180	209500191090	209500190179	209500190185
6500	209500191056	209500191091	209500190204	209500191100
7000	209500191046	209500191092	209500191066	209500191101
7500	209500191047	209500191093	209500191042	209500191102

选配表15<Optional Parts List 15>

序号 Item	A1 (1.0t-1.5t)	A1 (1.8t)	A2 (1.0t-1.5t)	A2 (1.8t)
起升高度 Lift Height	原物料码 Original Part No.	原物料码 Original Part No.	原物料码 Original Part No.	原物料码 Original Part No.
4000	LH-1223089-100	LH-1234089-100	LH-1223071-100	LH-1234071-100
4300	LH-1223095-100	LH-1234095-100	LH-1223075-100	LH-1234075-100
4500	LH-1223097-100	LH-1234097-100	LH-1223081-100	LH-1234081-100
4700	LH-1223103-100	LH-1234103-100	LH-1223087-100	LH-1234087-100
4800	LH-1223105-100	LH-1234105-100	LH-1223087-100	LH-1234087-100
5000	LH-1223111-100	LH-1234111-100	LH-1223091-100	LH-1234091-100
5500	LH-1223121-100	LH-1234121-100	LH-1223101-100	LH-1234101-100
6000	LH-1223135-100	LH-1234135-100	LH-1223113-100	LH-1234113-100
6500	LH-1223145-100	LH-1234145-100	LH-1223123-100	LH-1234123-100
7000	LH-1223157-100	LH-1234157-100	LH-1223127-100	LH-1234127-100
7500	LH-1223169-100	LH-1234169-100	LH-1223139-100	LH-1234139-100

图27 右升降油缸/Lift cylinder,Right
 Fig.27 左升降油缸/Lift cylinder,Left

1.0t-1.8t 3级全自由门架TRIPLEX MAST

序号 Item	物料码 Part NO	名称 Description	数量 Qty	备注或适用车型 Remarks or Serial NO	原物料码 Original Part No
A	See OP.Parts 16	右升降油缸	1		
B	See OP.Parts 16	左升降油缸	1		
1	300060050003	挡圈 25	1		G0895P1-000025-00
2	209800050075	活塞	1		N15M300-400002-W00
3	209800090290	支承圈	1		N15M300-400003-W00

	4	209800090286	保护圈	1		N15M300-400004-W00
	5	209990000157	OSI密封圈D45	1		FU0563L0-G00
	6	209800090287	阀套	1		N15M300-400005-W00
	7	300060050001	挡圈 21	1		G0895P1-000021-00
	8	See OP.Parts 16	右缸体	1		
	8	See OP.Parts 16	左缸体	1		
	9	204100070375	DKI防尘圈d35	1		FD2041A0-G00
	10	204100070388	ISI密封圈d35	1		FU0424K0-G00
	11	209800030060	导向套	1		N15M300-402000-W00
注：序号1,2,13,组装后为不可拆分整体,用户订购时应订购整个组合件。						

图27 右升降油缸/Lift cylinder,Right Fig.27 左升降油缸/Lift cylinder,Left	3级全自由门架TRIPLEX MAST					
	序号 Item	物料码 Part NO	名称 Description	数量 Qty	备注或适用车型 Remarks or Serial NO	原物料码 Original Part No
	12	300130010036	O形密封圈46.2×2.65	1		G3452P1-46P22P65-00
	13	See OP.Parts 16	活塞杆	1		
	14	See OP.Parts 16	隔套	1		
	15	209800080014	油嘴组件	1	右升降油缸	X15M300-403000-W00

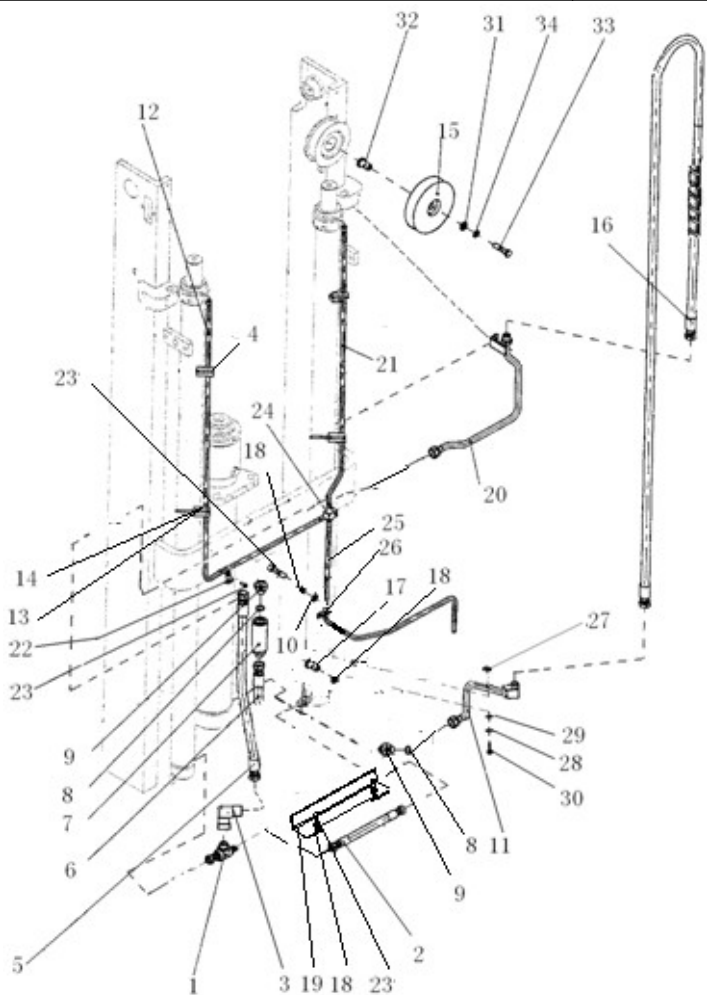
4800	209800002285	209800002295	209800012014	209800012024	209800021308	
5000	209800002286	209800002296	209800012015	209800012025	209800021309	
5500	209800002256	209800002261	209800011985	209800011990	209800021310	
6000	209800002288	209800002298	209800012017	209800012027	209800021311	
6500	209800002289	209800002299	209800012018	209800012028	209800021312	
7000	209800002266	209800002276	209800011995	209800012005	209800021299	
7500	209800002268	209800002278	209800011997	209800012007	209800021301	

选配表16<Optional Parts List 16>

序号 Item	A1 Lift cylinder,Right	A2 Lift cylinder,Left	8 Cylinder body, R	8 Cylinder body , L	13 Piston rod	14 Sheath
起升高度 Lift Height	物料码 Part NO.	物料码 Part NO.	物料码 Part NO.	物料码 Part NO.	物料码 Part NO.	物料码 Part NO.
4000	XR15N400-400000-000	XR15N400-500000-000	XR15N400-401000-W00	XR15N400-501000-W00	XR15N400-400001-W00	N15M400-400002-W00
4300	XR15N430-400000-000	XR15N430-500000-000	XR15N430-401000-W00	XR15N430-501000-W00	XR15N430-400001-W00	
4500	X15N430-400000-000	X15N430-500000-000	X15N430-401000-W00	X15N430-501000-W00	X15N430-400001-W00	
4700	X15M300-400000-001	X15M300-500000-001	X15M300-401000-W00	X15M300-501000-W00	X15M300-400001-W00	
4800	X15N470-400000-000	X15N470-500000-000	X15N470-401000-W00	X15N470-501000-W00	X15N470-400001-W00	
5000	X15N480-400000-000	X15N480-500000-000	X15N480-401000-W00	X15N480-501000-W00	X15N480-400001-W00	
5500	X15M350-400000-000	X15M350-500000-000	X15M350-401000-W00	X15M350-501000-W00	X15M350-400001-W00	
6000	XR15N600-400000-000	XR15N600-500000-000	XR15N600-401000-W00	XR15N600-501000-W00	XR15N600-400001-W00	
6500	XR15N650-400000-000	XR15N650-500000-000	XR15N650-401000-W00	XR15N650-501000-W00	XR15N650-400001-W00	
7000	X15M450-400000-000	X15M450-500000-000	X15M450-401000-W00	X15M450-501000-W00	X15M450-400001-W00	
7500	X15M480-400000-000	X15M480-500000-000	X15M480-401000-W00	X15M480-501000-W00	X15M480-400001-W00	

图 28 油路系统
Fig.28 Mast piping

3级全自由门架TRIPLEX MAST



序号 Item	物料码 Part NO	名称 Description	数量 Qty	备注或适用车型 Remarks or Serial NO	原物料码 Original Part No
1	209850060169	三通接头	1		RC25U300-704000-000
2	209990000938	胶管接头	1		JGG-10A00372A0-000
3	209850060172	90°管接头	1		RC25N450-201000-000
4	300290010006	喉箍16	6		JT08870-0160000000-00
5	209850060651	胶管接头	1		JGG-13A00603Z8-000
6	209850060652	油管总成	1		JGG-13A00625Z0-000
7	206200110006	单向限速阀	1		XSF2-F16L-1.5/40-G00
8	300130010134	O形密封圈24×2.4	2		G001235-002402P4-00
9	209850060089	直通管接头	2		X25N450-200001-000
10	300030040014	垫圈 8	2		G0097P1-000008-00
11	209850070178	硬管接头	1		X15N450-203000-000
12	See OP.Parts 17	回油管	1		
13	209850090299	镶边	3		N30M300-700002-000
14	209990000574	通用尼龙扎带	3		GT-3001-G00
15	209850050063	滑轮	1		1.5N4.5H-200005B

图 28 油路系统
Fig.28 Mast piping

3级全自由门架TRIPLEX MAST

序号 Item	物料码 Part NO	名称 Description	数量 Qty	备注或适用车型 Remarks or Serial NO	原物料码 Original Part No
16	See OP.Parts 17	胶管接头	1		
17	300040020100	螺钉M8×30	1		G000070-008030-00
18	300030010015	垫圈 8	4		G000093-000008-00
19	209850090776	油管护罩	1		XR30M300-701001-000
20	209850040745	钢油管	1		XR15N450-202000-000
21	See OP.Parts 17	回油管	1		
22	209850080037	管夹	1		S16M300-700003-000
23	209500270220	螺栓M8×1.25×16	6		N30M300-003000-000
24	209850090298	三通接头	1		N30M300-700005-000
25	206300070062	回油管	1		JGD-095A01360-000
26	209850080058	管夹	1		N30M300-700008-000
27	209850090459	垫圈	2		AH35D450-204001-000
28	300030010001	垫圈 10	2		G000093-000010-00
29	300030190001	垫圈 10	2		G000096-000010-00

	30	300040020073	螺钉M10×20	1		G000070-010020-00
--	----	--------------	----------	---	--	-------------------

图 28 油路系统
Fig.28 Mast piping

1.0t-1.8t 3级全自由门架TRIPLEX MAST

序号 Item	物料码 Part NO	名称 Description	数量 Qty	备注或适用车型 Remarks or Serial NO	原物料码 Original Part No
31	300030040004	垫圈 14	1		G0097P1-000014-00
32	209850090303	轴套	1		N15N450-200021-000
33	300010030053	螺栓M14×55	1		G005782-014055-00
34	300030010003	垫圈 14	1		G000093-000014-00

选配表17 <Optional Parts List 17>

序号 Item	12	16	21
起升高度 Lift Height	物料码 Part NO.	物料码 Part NO.	物料码 Part NO
4000	209850041106	209850060968	209850040967
4300	209850041107	209850060969	201600040045
4500	201600040056	209850060650	201600040040
4700	201600040054	209850060970	201600040055
4800	209850041109	209850060971	201600040050
5000	209850041110	209850060972	209850040971
5500	209850040941	209850060973	209850040956
6000	209850041112	209850060974	209850040973
6500	209850041113	209850060975	209850040974
7000	209850040946	209850060976	209850040961
7500	209850040948	209850060977	209850040963

选配表17 <Optional Parts List 17>

序号 Item	12	16	21
起升高度 Lift Height	原物料码 Original Part No.	原物料码 Original Part No.	原物料码 Original Part No.
4000	JGD-095A01015-000	JGG-13A02400A0-000	JGD-095A00560-000
4300	JGD-095A01115-000	JGG-13A02600A0-000	JGD-095A00660-000
4500	JGD-095A01165-000	JGG-13A02690A0-000	JGD-095A00710-000
4700	JGD-095A01215-000	JGG-13A02890A0-000	JGD-095A00760-000
4800	JGD-095A01265-000	JGG-13A02990A0-000	JGD-095A00810-000
5000	JGD-095A01315-000	JGG-13A03180A0-000	JGD-095A00860-000
5500	JGD-095A01465-000	JGG-13A03570A0-000	JGD-095A01010-000
6000	JGD-095A01665-000	JGG-13A04050A0-000	JGD-095A01210-000
6500	JGD-095A01865-000	JGG-13A04440A0-000	JGD-095A01410-000
7000	JGD-095A02065-000	JGG-13A04930A0-000	JGD-095A01610-000
7500	JGD-095A02215-000	JGG-13A05310A0-000	JGD-095A01760-000

图29 侧移油路
Fig.29 lateral moving circuit

3级全自由门架TRIPLEX MAST

序号 Item	物料码 Part NO	名称 Description	数量 Qty	备注或适用车型 Remarks or Serial NO	原物料码 Original Part No
A1	See OP.Parts 18	侧移油路	1		
1	209850050077	滑轮护板	1		XR15V450-911000-000
2	300030010015	垫圈 8	7		G000093-000008-00
3	300040020096	螺钉M8×16	3		G000070-008016-00
4	300030040014	垫圈 8	3		G0097P1-000008-00
5	209850090786	支架	1		XR15V450-912000-000
6	209850090790	销轴	1		XR15V450-913000-000

	7	300010040145	螺栓M6×12	1		G005783-006012-00
	8	300030010014	垫圈 6	1		G000093-000006-00
	9	209850050074	滑轮	2		XR30V450-910001-000
	10	300040020074	螺钉M10×25	4		G000070-010025-00
	11	300030010001	垫圈 10	4		G000093-000010-00
	12	300030040002	垫圈 10	2		G0097P1-000010-00
	13	209850090775	套	1		XR15V450-910002-000
	14	See OP.Parts 18	胶管接头	1		

图29 侧移油路 Fig.29 lateral moving circuit	3级全自由门架TRIPLEX MAST					
	序号 Item	物料码 Part NO	名称 Description	数量 Qty	备注或适用车型 Remarks or Serial NO	原物料码 Original Part No
	15	See OP.Parts 18	胶管接头	1		
	16	209850040746	钢油管	1		XR15V450-931000-000
	17	209850060754	直通接头	1		XR15V450-900005-000
	18	300130010089	O形密封圈22×2.4	2		G001235-002202P4-00
	19	209850060614	胶管接头	1		JGG-08B01070Z0-000
	20	209850060615	胶管接头	1		JGG-08B01000Z0-000

	21	209850060167	直通接头	1		RC25V450-900006-000
	22	209850040749	钢油管	1		XR15V450-941000-000
	23	209850060598	90°管接头	2		XR15B300-904000-000
	24	209850060616	胶管接头	1		JGG-08B00320A0-000
	25	209850060656	胶管接头	1		JGG-08B00550Z3-000
	26	209850060747	接头支座	1		XR15V450-971000-000
	27	300040020098	螺钉M8×25	2		G000070-008025-00
	28	300040020101	螺钉M8×35	1		G000070-008035-00
	29	206500040044	盖板	1		RT500-650006-000

图29 侧移油路 Fig.29 lateral moving circuit	3级全自由门架TRIPLEX MAST					
	序号 Item	物料码 Part NO	名称 Description	数量 Qty	备注或适用车型 Remarks or Serial NO	原物料码 Original Part No
	30	209850080129	管夹	1		XR15B300-920001-000
	31	300040020097	螺钉M8×20	2		G000070-008020-00
	32	209850070377	支板	1		RTE35V450-921000-000
	33	209850090303	轴套	1		N15N450-200021-000
	34	209850050076	滑轮	1		XR15V450-950001-000

	35	300030040004	垫圈 14	1		G0097P1-000014-00
	36	300030010003	垫圈 14	1		G000093-000014-00
	37	300010030053	螺栓M14×55	1		G005782-014055-00

选配表18 <Optional Parts List 18>

序号 Item	A1	14	15
起升高度 Lift Height	物料码 Part NO.	物料码 Part NO.	物料码 Part NO.
4000	209850001698	209850061007	209850060997
4300	209850001699	209850031134	209850031133
4500	209850001243	209850060657	209850060658
4700	209850001700	209850061009	209850060999
4800	209850001701	209850061009	209850031129
5000	209850001702	209850061010	209850061001

5500	209850001703	209850061011	209850061002
6000	209850001704	209850061012	209850061003
6500	209850001705	209850061013	209850061005
7000	209850001706	209850061014	209850061004
7500	209850001707	209850061015	209850061006

选配表18 <Optional Parts List 18>

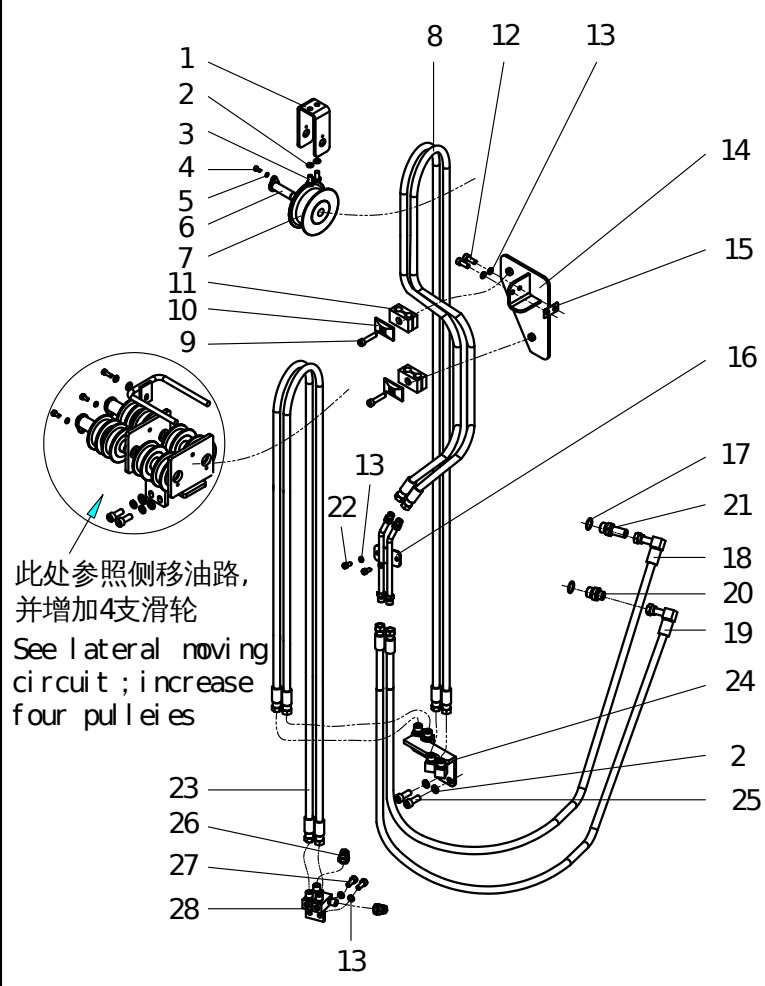
序号 Item	A1	14	15
起升高度 Lift Height	原物料码 Original Part No.	原物料码 Original Part No.	原物料码 Original Part No.
4000	XR15V400-900000-000	JGG-08B01970A0-000	JGG-08B02530A0-000
4300	XR15V430-900000-000	JGG-08B02070A0-000	JGG-08B02720A0-000

4500	XR15V450-900000-000	JGG-08B02160A0-000	JGG-08B02820A0-000
4700	XR15V470-900000-000	JGG-08B02260A0-000	JGG-08B03020A0-000
4800	XR15V480-900000-000	JGG-08B02260A0-000	JGG-08B03120A0-000
5000	XR15V500-900000-000	JGG-08B02360A0-000	JGG-08B03310A0-000
5500	XR15V550-900000-000	JGG-08B02550A0-000	JGG-08B03710A0-000
6000	XR15V600-900000-000	JGG-08B02750A0-000	JGG-08B04200A0-000
6500	XR15V650-900000-000	JGG-08B02940A0-000	JGG-08B04590A0-000
7000	XR15V700-900000-000	JGG-08B03040A0-000	JGG-08B05090A0-000
7500	XR15V750-900000-000	JGG-08B03230A0-000	JGG-08B05480A0-000

图30 第四联油路
Fig.30 Fourth oil

3级全自由门架TRIPLEX MAST

序号 Item	物料码 Part NO	名称 Description	数量 Qty	备注或适用车型 Remarks or Serial NO	原物料码 Original Part No
A1	See OP.Parts 19	第四联油路The fourth	1		
1	209850050078	滑轮支架	1		XR15V450-810002-000
2	300030010001	垫圈 10	4		G000093-000010-00
3	300010040005	螺栓M10×20	2		G005783-010020-00
4	300010040145	螺栓M6×12	1		G005783-006012-00
5	300030010014	垫圈 6	1		G000093-000006-00
6	209850090065	销轴	1		X25V450-801000-001
7	209850050075	滑轮	1		XR15V450-810001-000
8	See OP.Parts 19	胶管接头	2		
9	300040020101	螺钉M8×35	2		G000070-008035-00
10	206500040044	盖板	2		RT500-650006-000
11	209850080129	管夹	2		XR15B300-920001-000
12	300040020097	螺钉M8×20	2		G000070-008020-00
13	300030010015	垫圈 8	6		G000093-000008-00
14	209850070376	支板	1		RTE35V450-821000-000

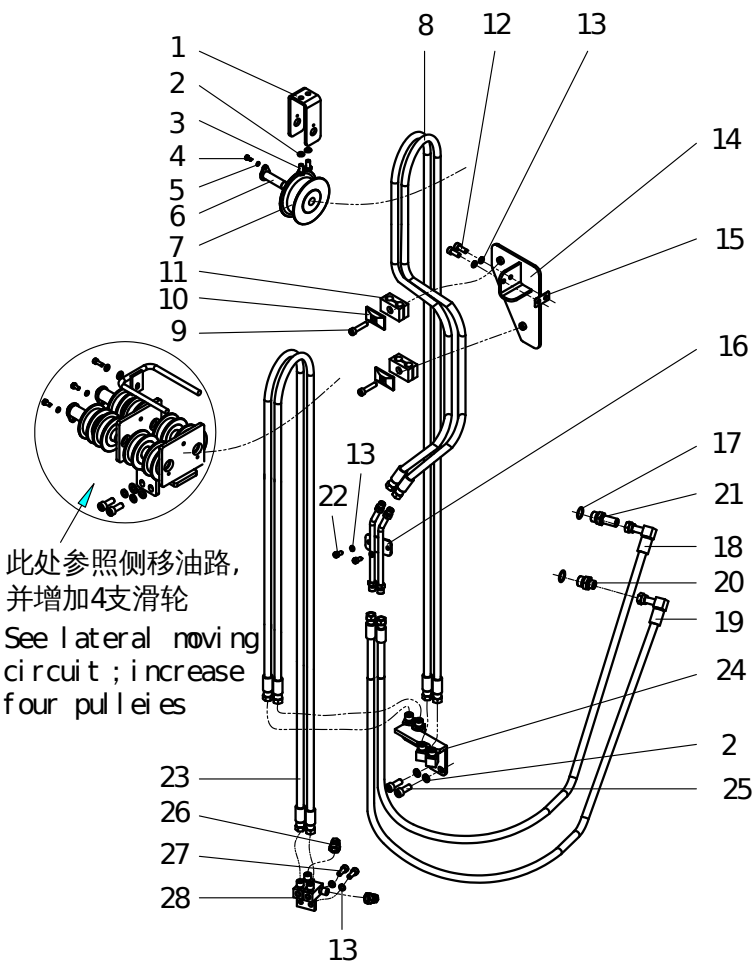


此处参照侧移油路，
并增加4支滑轮
See lateral moving
circuit; increase
four pulleys

图30 第四联油路
Fig.30 Fourth oil

1.0t-1.8t 3级全自由门架TRIPLEX MAST

序号 Item	物料码 Part NO	名称 Description	数量 Qty	备注或适用车型 Remarks or Serial NO	原物料码 Original Part No
15	209850090193	垫片	1		RTE35V450-820001-000
16	209850040746	钢油管	1		XR15V450-931000-000
17	209850060754	直通接头	1		XR15V450-900005-000
18	300130010089	O形密封圈22×2.4	2		G001235-002202P4-00
19	209850060618	胶管接头	1		JGG-08B00770Z0-000
20	209850060619	胶管接头	1		JGG-08B00700Z0-000
21	209850060167	直通接头	1		RC25V450-900006-000
22	300040020096	螺钉M8×16	2		G000070-008016-00
23	See OP.Parts 19	胶管接头	2		
24	209850040747	钢油管	1		XR15V450-841000-000
25	300010040009	螺栓M10×25	2		G005783-010025-00
26	209850090773	闷盖	2		XR15V450-805000-000
27	300040020098	螺钉M8×25	2		G000070-008025-00
28	209850060746	接头支座	1		XR15V450-871000-000



选配表19<Optional Parts List 19>

序号 Item	A1	8	23
起升高度 Lift Height	物料码 Part NO.	物料码 Part NO.	物料码 Part NO.
4000	209850001687	209850060978	209850060988
4300	209850001688	209850060979	209850060989
4500	209850001267	209850060654	209850060655
4700	209850001689	209850060980	209850060990
4800	209850001690	209850060981	209850060990
5000	209850001691	209850061015	209850060991
5500	209850001692	209850060983	209850060992
6000	209850001693	209850060984	209850060993
6500	209850001694	209850060985	209990000923
7000	209850001696	209850060986	209850060995
7500	209850001697	209850060987	209850060996

选配表19<Optional Parts List 19>

序号 Item	A1	8	23
起升高度 Lift Height	原物料码 Original Part No.	原物料码 Original Part No.	原物料码 Original Part No.
4000	XR15V400-800000-000	JGG-08B02440A0-000	JGG-08B02080A0-000
4300	XR15V430-800000-000	JGG-08B02640A0-000	JGG-08B02180A0-000
4500	XR15V450-800000-000	JGG-08B02740A0-000	JGG-08B02270A0-000
4700	XR15V470-800000-000	JGG-08B02930A0-000	JGG-08B02370A0-000
4800	XR15V480-800000-000	JGG-08B03030A0-000	JGG-08B02370A0-000
5000	XR15V500-800000-000	JGG-08B03230A0-000	JGG-08B02470A0-000
5500	XR15V550-800000-000	JGG-08B03620A0-000	JGG-08B02660A0-000
6000	XR15V600-800000-000	JGG-08B04120A0-000	JGG-08B02860A0-000
6500	XR15V650-800000-000	JGG-08B04510A0-000	JGG-08B03050A0-000
7000	XR15V700-800000-000	JGG-08B05000A0-000	JGG-08B03150A0-000
7500	XR15V750-800000-000	JGG-08B05400A0-000	JGG-08B03340A0-000