

第四部分 车身系统目录

Part IV Body system contents

- | | | | | |
|---------------------------|--------------------------|---------------------------|--------------------------|---------------------------|
| (A) CPCD30/35-XRG71 | (A3) CPC30/35/38-XRG71 | (B) CPCD30/35/38-XRG72 | (B2) CPCD30/35/38-XRG72F | (B3) CPC30/35/38-XRG72 |
| (B4) CPCD30/35/38-XRG72J | (B5) CPC30/35/38-XRG72J | (C) CPCD30-XRW10 | (C1) CPCD30-XRW10B | (C2) CPCD30-XRW10F |
| (C3) CPC30-XRW10 | (D1) CPCD30/35/38-XRW33B | (D2) CPCD30/35/38-XRW33F | (E) CPCD30/35-XRW43 | (F) CPCD30/35/38-XRW73 |
| (G1) CPCD30/35/38-XRW55B | (G2) CPCD30/35/38-XRW55F | (G3) CPC30/35/38-XRW55 | (H) CPCD30/35-XRW56 | (H1) CPCD30/35/38-XRW56B |
| (H2) CPCD30/35/38-XRW56F | (I) CPQD30/35-XRW22 | (I1) CPQD30/35/38-XRW22B | (J) CPQYD30/35/38-XRW22 | (Q) CPCD30/35/38-XRG2 |
| (R2) CPCD30/35/38-XRW92F | (L2) CPQD30/35/38-XRW22F | (J2) CPQYD30/35/38-XRW22F | (L2) CPYD30/35/38-XRW52F | (B6) CPCD30/35/38-XRG72JF |
| (J1) CPQYD30/35/38-XRW22B | (E2) CPCD30/35/38-XRW43F | (E1) CPCD30/35/38-XRW43B | | |

序号 Item	名称 Description	适用车型 Serial No.	页码 Page
图 1 Fig. 1	平衡重总成 Counter balance assy	全部车型 All models of truck	4-1
图 2 Fig. 2	标示 Label	全部车型 All models of truck	4-3
图 3 Fig. 3	座椅总成 Seat assy	全部车型 All models of truck	4-7
图 3-1 Fig.3-1	座椅总成 Seat assy	全部车型 All models of truck	4-8
图 3-2 Fig.3-2	座椅总成 Seat assy	全部车型 All models of truck	4-9
图 4 Fig. 4	车身系统 Truck body system	全部车型 All models of truck	4-10
图 5 Fig. 5	仪表架总成 Instrument frame assy	全部车型 All models of truck	4-12

序号 Item	名称 Description	适用车型 Serial No.	页码 Page
图 6 Fig. 6	机罩及底板总成 Hood and floor board assy	全部车型 All models of truck	4-14
图 7 Fig. 7	锁扣总成 Lock assy	全部车型 All models of truck	4-18
图 8 Fig. 8	护顶架 Overhead guard	全部车型 All models of truck	4-19

图1 平衡重总成
Fig.1 Counter balance assy

全部车型
All models of truck

序号 Item	物料码 Part No.	名称 Description	数量 Qty	备注或适用车型 Remarks or Serial No.	原物料码 Original Part No.
1	200100070003	塞子 Plug	2		N163-010002-000
2	310090040026	左密封条 Left Seal strip	1		XR310-010003-000
3	200100020460	平衡重 Counter balance	1	3 t	XR310-010001-000
3	200100020465	平衡重 Counter balance	1	3.5 t	XR360-010001-000
4	310090040015	右密封条 Right Seal strip	1		XR310-010004-000
5	200100060008	调整垫片 Adjust shim	4		N163-010007-000
6	300030040002	垫圈 10 Washer 10	4		G0097P1-000010-00
7	300030010001	垫圈 10 Washer 10	4		G000093-000010-00
8	300010040005	螺栓M10×20 Bolt M10×20	4		G005783-010020-00
9	200100060009	调整垫片 Adjust shim	2		N163-010008-000
10	200100050101	牵引销 Towing pin	1		XR310-011000-000
11	200100080014	锁销 Lock pin	1	For CE	XF250-011003-800
12	300010030129	螺栓M30×130 Bolt M30×130	2		G005782-030130-00
13	300030090005	垫圈 30 Washer 30	2		G007244-000030-00
14	200100100037	垫圈 Washer	2		N163-010005-000

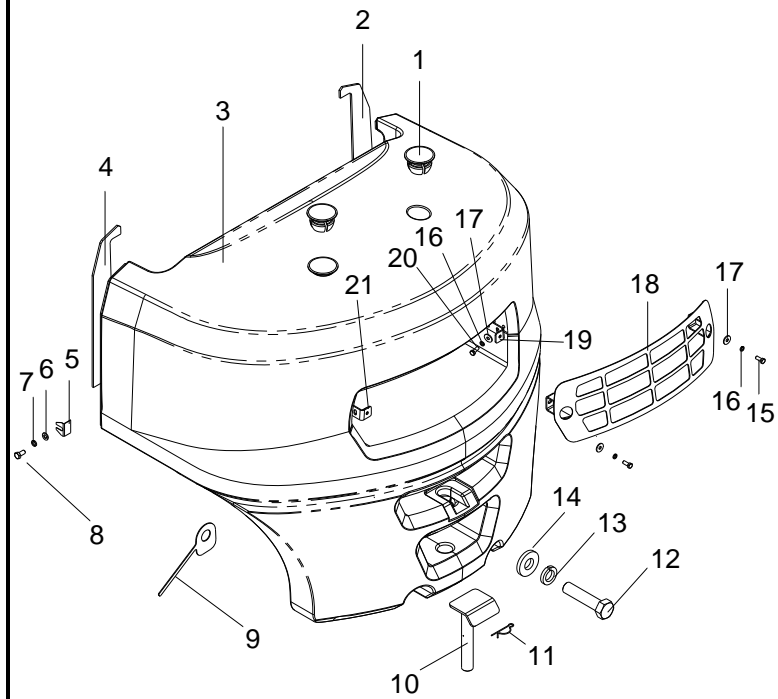


图2 标示
Fig.2 Label

全部车型
All models of truck

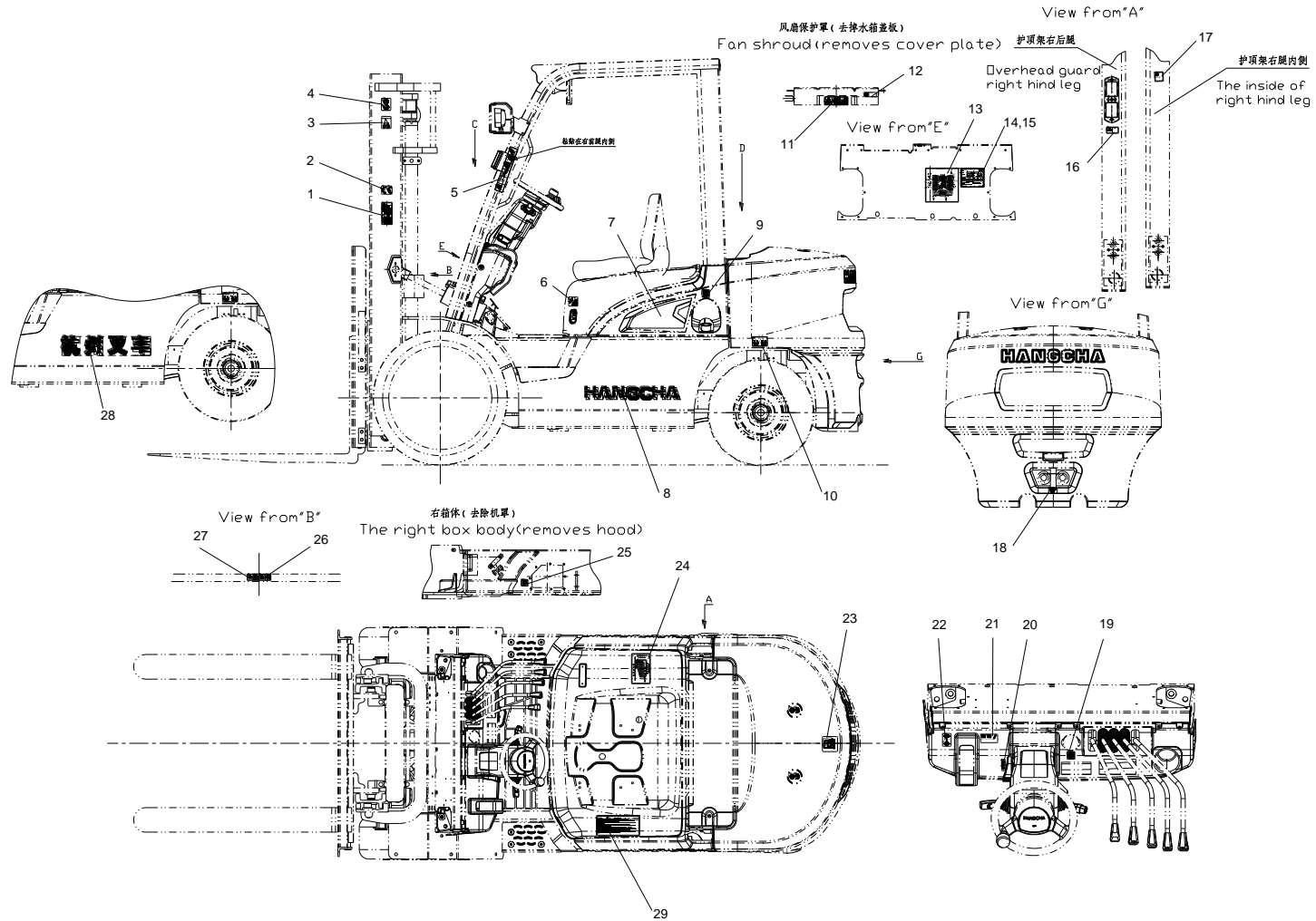
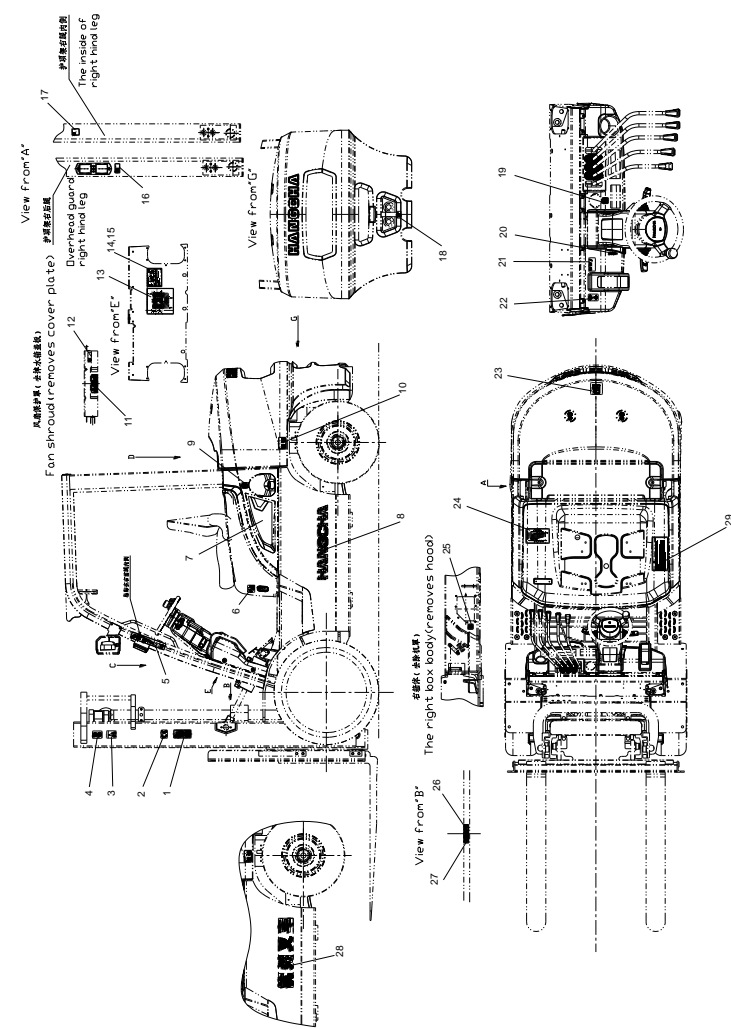


图2 标示
Fig.2 Label

全部车型
All models of truck



序号 Item	代号 Part No.	名称 Description	数量 Qty	备注或适用车型 Remarks or Serial No.	原物料码 Original Part No.
1	200200100122	危险标签 Dangerous label	2	中文	R960-020049-001
1	200200100118	危险标签 Dangerous label	2	English	R960-020031-001
2	200200170010	CE 标签 CE label	2	For CE	R960-020012-001
3	200200150142	起吊标签 Lift label	2	中文	R960-020047-001
3	200200150140	起吊标签 Lift label	2	English	R960-020019-001
4	200200150141	起吊标签 Lift label	2		R960-020035-001
5	200200100046	安全带标签 Safe belt label	1	English	R960-020027-001
6	200200130022	机罩打开标签 Hood open nameplate	1		XF250-020014-001
7	NO RART NO.	吨位标签 Ton label	2		
8	200200050102	字样标签 Script label	2		R960-020037-001
9	200200120036	柴油标签 Diesel oil label	1	柴油叉车 Diesel forklift	R960-020028-001
9	200200120037	汽油标签 Gasoline label	1	汽油机及双燃料叉车 Gasoline&CNG forklift	R960-020006-001
10	200200090032	轮胎气压标签 Type pressure label	1	中文	R960-020052-001
10	200200090031	轮胎气压标签 Type pressure label	1	English	R960-020051-001
11	200200100108	切手危险标签 Hand cut risk label	1	中文	R960-020040-001

图2 标示
Fig.2 Label

全部车型
All models of truck

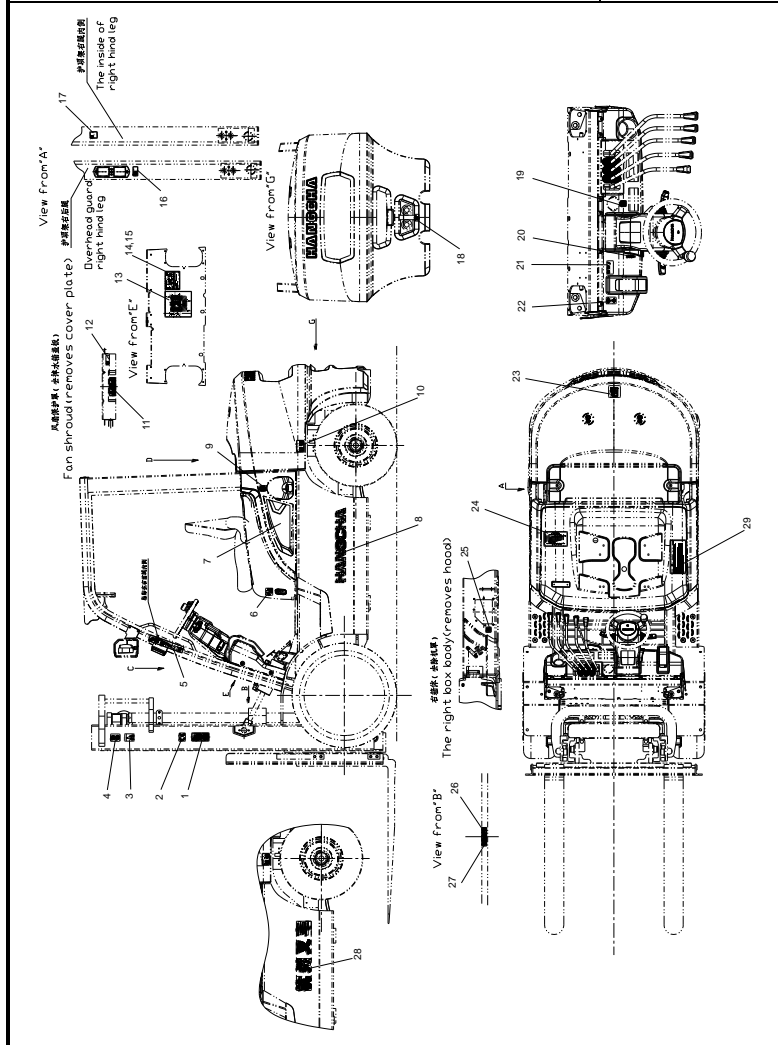
图2 标示 Fig.2 Label	全部车型 All models of truck					
	序号 Item	代号 Part No.	名称 Description	数量 Qty	备注或适用车型 Remarks or Serial No.	原物料码 Original Part No.
	11	200200100107	切手危险标签 Hand cut risk label	1	English	R960-020034-001
	12	200200150087	防冻液标签 Antifreeze label	1	中文	R960-020016-001
	12	200200150088	防冻液标签 Antifreeze label	1	English	R960-020017-001
	13	200200110072	润滑系统标签 Lubrication	1	中文	R960-020020-001
	13	200200110073	润滑系统标签 Lubrication	1	English	R960-020021-001
	14	NO RART NO.	产品铭牌 Product label	1		
	15	300080060001	铆钉 M4×10 Screw M4×10	4		G012618-004010-00
	16	200200100130	严禁冲水标签 No swashing label	1	中文	R960-020013-001
	16	200200100131	严禁冲水标签 No swashing label	1	English	R960-020014-001
	17	200200040019	噪音标示 Noise label	1	CE	R960-020024-001
	18	200200150148	拴系点标签 Tie down point label	1		R960-020023-001
	19	200200150094	Emergency disconnect label 紧急断电标签	1		R960-020030-001
	20	200200150077	档位标签 Shift label	1	机械换向叉车 Machine liquid reversing forklift	R960-020036-001
	21	200200110062	操作标签 1 Operation label 1	1	English (Hydraulic forklifts)	R960-020007-001
	21	200200110065	操作标签 2 Operation label 2	1	English (Mechanical forklift)	R960-020008-001

图2 标示
Fig.2 Label

全部车型
All models of truck

	序号 Item	代号 Part No.	名称 Description	数量 Qty	备注或适用车型 Remarks or Serial No.	原物料码 Original Part No.
	21	200200110063	操作标签 1 Operation label 1	1	中文 (液力叉车)	R960-020039-001
	21	200200110066	操作标签 2 Operation label 2	1	中文 (机械叉车)	R960-020038-001
	22	200200150147	手制动器标签 Brake label	1		R960-020022-001
	23	200200150060	LPG 标签 LPG label	1	中文	R960-020025-001
	23	200200150061	LPG 标签 LPG label	1	English	R960-020053-001
	24	NO RART NO.	载荷曲线标牌 Load label	1		
	25	200200120042	液压油标签 Hydraulic oil label	1		R960-020011-001
	26	200200100121	危险标签 Dangerous label	1	中文	R960-020048-001
	26	200200100119	危险标签 Dangerous label	1	English	R960-020032-001
	27	200200100117	危险标签 Dangerous label	1	中文	R960-020015-001
	27	200200100120	危险标签 Dangerous label	1	English	R960-020033-001
	28	200200030592	字样标签 Script label	2	中文	XR310-020003-000
	29	200200100084	警告标签 Warn label	1	中文	R960-020029-001
	29	200200100083	警告标签 Warn label	1	English	R960-020009-001

图3 座椅总成
Fig.3 Seat assy

全部车型
All models of truck

图3 座椅总成 Fig.3 Seat assy	全部车型 All models of truck					
	序号 Item	物料码 Part NO.	名称 Description	数量 Qty	备注或适用车型 Remarks Or Serial NO.	原物料码 Original Part No.
	A	200300000154	座椅总成,不带减震 Seat assy, Not damping	1	包含/INC:1-5	XR310-030000-000
	1	NO PART NO.	安全带 Seat belt	1		
	2	300030190008	垫圈 8 Washer 8	4		G000096-000008-00
	3	300030010015	垫圈 8 Washer 8	4		G000093-000008-00
	4	300020010016	螺母 M8 Nut M8	4		G006170-000008-00
	5	NO PART NO.	手轮 Hand wheel	1		

图 3-1 座椅总成
Fig.3-1 Seat assy

全部车型
All models of truck

图 3-1 座椅总成 Fig.3-1 Seat assy	全部车型 All models of truck					原物料码 Original Part No.
	序号 Item	物料码 Part NO.	名称 Description	数量 Qty	备注或适用车型 Remarks Or Serial NO.	原物料码 Original Part No.
	A	200300000156	座椅总成,不带减震 Seat assy, Not damping	1	包含/INC:1-4	XR310-030000-500
	1	NO PART NO.	安全带 Seat belt	1		
	2	300030190008	垫圈 8 Washer 8	4		G000096-000008-00
	3	300030010015	垫圈 8 Washer 8	4		G000093-000008-00
	4	300020010016	螺母 M8 Nut M8	4		G006170-000008-00

图4 车身系统
Fig.4 Truck body system

全部车型
All models of truck

序号 Item	代号 Part No.	名称 Description	数量 Qty	备注或适用车型 Remarks or Serial No.	原物料码 Original Part No.
1	204100001221	车架 Truck frame	1	除外/Except C1 D1 G1 G2 H1 I1 I2 J2 L2 J1	XR310-410000-000
1	204100001711	车架 Truck frame	1	C1 D1 G1 G2 H1 I1 I2 J2 L2 J1 E2 E1	XR317-410000-000
A1	204501000046	踏板组件 Pedal assy	1	包含/INC:2,3,6	XR310-450000-000
2	300010210001	螺栓组件M8×16 Bolt M8×16	6		G907414-008016-00
3	204501010052	右踏板 Right pedal	1		XR310-450002-000
4	310010080023	螺栓组件M12×30 Bolt M12×30	6		A300-400100-000
5	204001000094	横梁组件 Beam assy	1		XR310-401000-000
6	204501010055	左踏板 Left pedal	1		XR310-450001-000
A2	204400000371	电瓶盒组件 Battery box assy	1	包含/INC:7~9,11~17 除外/Except E I J I2 J2 L2 J1	XR310-440000-000
A3	204400000373	电瓶盒组件 Battery box assy	1	E I2 J2 J1 E2 E1 INC:7~18	XR311-440000-000
A4	204400000407	电瓶盒组件 Battery box assy	1	I J I2 J2 L2 J1 INC:7~12,14~17	XR313-440000-000
7	300030040014	垫圈8 Washer 8	4		G0097P1-000008-00

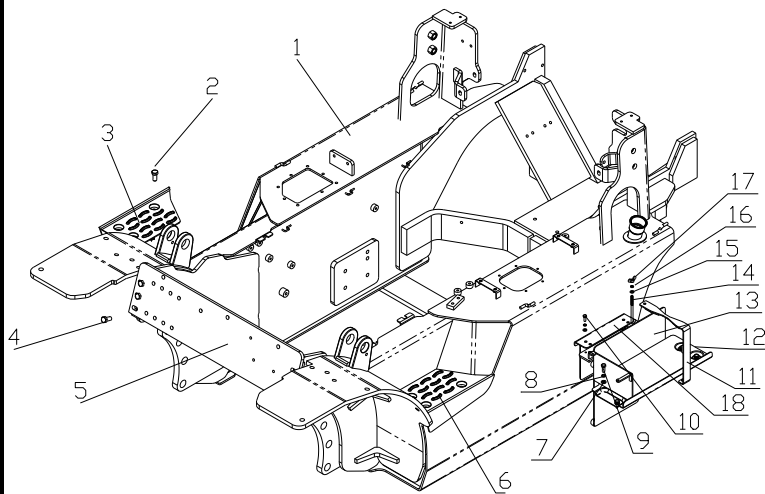


图5 仪表架总成
Fig.5 Instrument frame assy

全部车型
All models of truck

序号 Item	代号 Part No.	名称 Description	数量 Qty	备注或适用车型 Remarks or Serial No.	原物料码 Original Part No.
1	204203010004	开关前罩 Switch front cover	1		XF250-420101-000
2	204202020113	左前罩 Left front cover	1		XR310-420202-000
3	300010220013	螺栓组合件 M6×16 Bolt M6×16	6	用于驾驶室车 For Cab forklift	G907417-006016-00
4	204201000172	仪表架组件 Instrument frame	1		XR310-421000-000
5	204202020110	左护罩 Left cover	1		XR310-420201-000
5	204202020137	左护罩 Left cover	1	智能模块 Intelligent module	XR310-420201-500
6	204203010003	开关后罩 Switch rear cover	1		XF250-420102-000
7	300040260003	螺栓组合件 M5×16 Bolt M5×16	3		G907408-005016-00
8	300040380006	螺栓组合件 M4×12 Bolt M4×12	2		G907408-004012-00
9	204201040257	支架 Bracket	1		XR310-420001-000
10	204202020100	右护罩 Right cover	1	标配 Standard	XR310-420211-000
10	204202020103	右护罩 Right cover	1	断电开关 Disconnect switch	XR310-420214-000
11	310070030007	螺钉组件 Screw	11	标配 Standard	N163-420100-000
11	310070030007	螺钉组件 Screw	5	用于驾驶室车 For Cab forklift	N163-420100-000
12	204202010010	杯子 cup	1	标配 Standard	XR310-420212-000

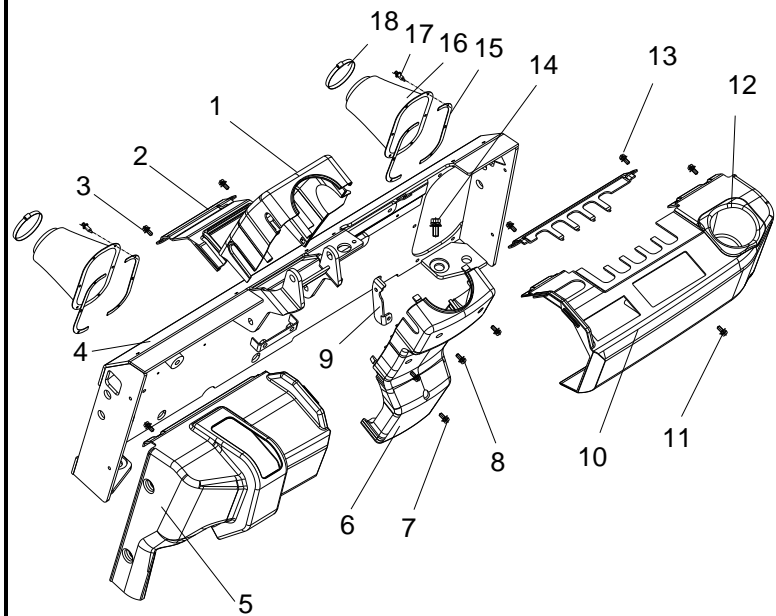


图6 机罩及底板总成(I)
Fig.6 Hood and floor board assy(I)

全部车型
All models of truck

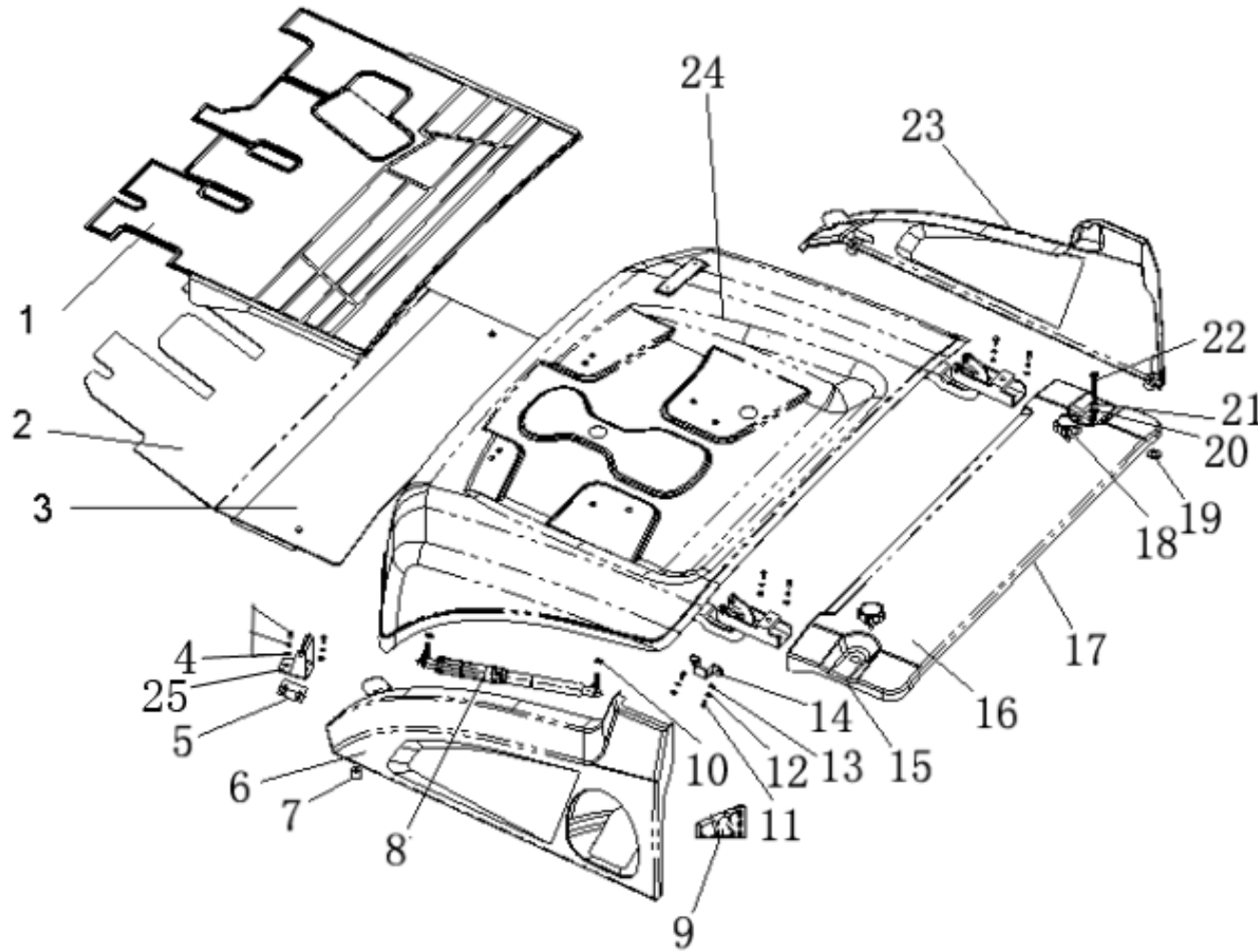


图6 机罩及底板总成(I)
Fig.6 Hood and floor board assy(I)

全部车型
All models of truck

序号 Item	代号 Part No.	名称 Description	数量 Qty	备注或适用车型 Remarks or Serial No.	原物料码 Original Part No.
1	204300020116	踏板垫 Pedal pad	1	(A) (B) (B2) (B4) (E) (Q) (R2) (B6) (E2) (E1)	XR310-430001-000
1	204300020125	踏板垫 Pedal pad	1	(A3) (B3) (B5)	XR310-430006-000
1	204300020124	踏板垫 Pedal pad	1	(C) (C1) (C2) (D1) (D2) (G1) (G2) (H) (H1) (H2) (I) (I1) (J) (F) (I2) (J2) (L2) (J1)	XR312-430001-000
1	204300020138	踏板垫 Pedal pad	1	(C3) (G3)	XR312-430006-000
2	204302000283	前底板总成(液力车) Board assy	1	(A) (B) (B2) (E) (B4) (Q) (R2) (B6) (E2) (E1)	XR310-431000-000
2	204302000321	前底板总成(机械车) Board assy	1	(A3) (B3) (B5)	XR310-436000-000
2	204302000286	前底板总成 Board assy	1	(C) (C1) (C2) (D1) (D2) (G1) (G2) (H) (H1) (H2) (I) (I1) (J) (F) (I2) (J2) (L2) (J1)	XR312-431000-000
2	204302000338	前底板总成 Board assy	1	(C3) (G3)	XR312-436000-000
3	204302000313	后底板总成 Floor assy	1		XR310-432000-000
4	300010220012	螺栓组合件 M8x16 Bolt assembly			G907417-008016-00
5	204300130172	调整垫片 Adjust shim	1		XF250-432002-000
6	204302000295	机罩左侧板总成 Left side plate	1		XR310-434000-000
7	203100020011	垫块 Block	4		XR310-430004-000

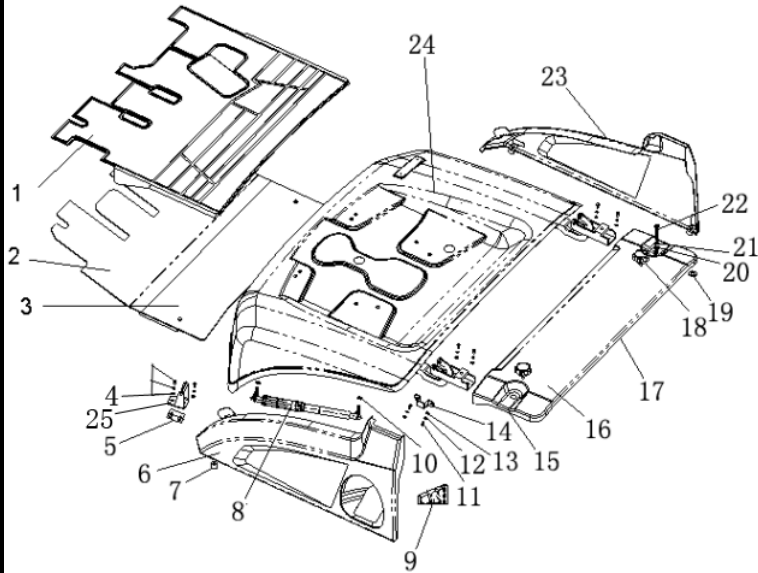


图6 机罩及底板总成(I)
Fig.6 Hood and floor board assy(I)

全部车型
All models of truck

序号 Item	代号 Part No.	名称 Description	数量 Qty	备注或适用车型 Remarks or Serial No.	原物料码 Original Part No.
8	310120010061	气弹簧 Air spring	1		XF250-430003-G00
9	204300060003	加油口密封块 Fuel seal block	1		XR310-430003-000
10	300020080005	螺母 M8 Nut M8	2		G006177-000008-00
11	300010040145	螺栓 M6×12 Bolt M6×12	4		G005783-006012-00
12	300030010014	垫圈 6 Washer 6	4		G000093-000006-00
13	300030040013	垫圈6 Washer 6	4		G0097P1-000006-00
14	204300141300	支架 Bracket	2		XR310-430002-000
15	310090010120	密封条 Seal Strip	1		XF250-430005-000
16	204300010032	水箱盖板 Cover plate	1		XF250-430002-000
16	204300010038	水箱盖板 Cover plate	1	LPG	XF250-430007-000
16	204300010034	水箱盖板 Cover plate	1	高位排气 High exhaust 非 LPG 叉车 No LPG fork	XF250-430002-520
16	204300010087	水箱盖板 Cover plate	1	高位排气(LPG 叉车) High exhaust (LPG fork)	XF250-430002-521
17	310090010118	密封条 Seal Strip	1		XF250-430006-000
17	310090010121	密封条 Seal Strip	1	LPG	XF250-430008-000
18	204304050006	拧紧螺栓 Bolt	2		N163-430004-000

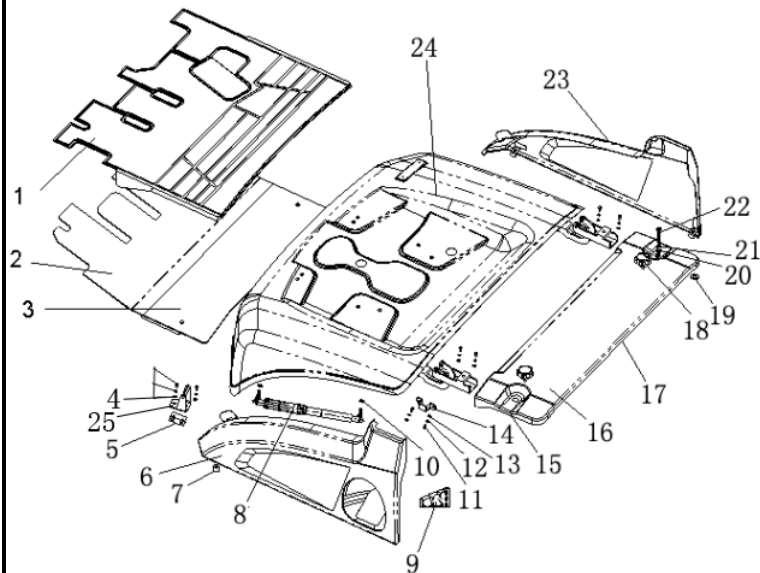


图6 机罩及底板总成(I)
Fig.6 Hood and floor board assy(I)

全部车型
All models of truck

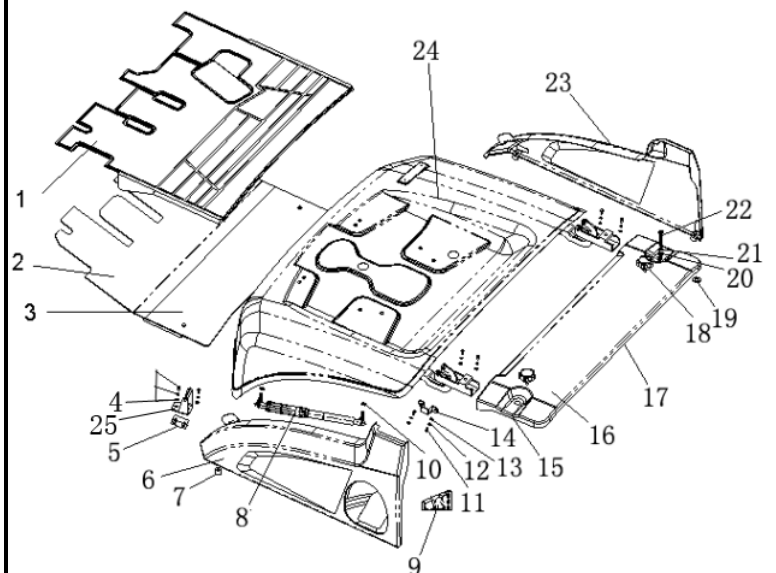
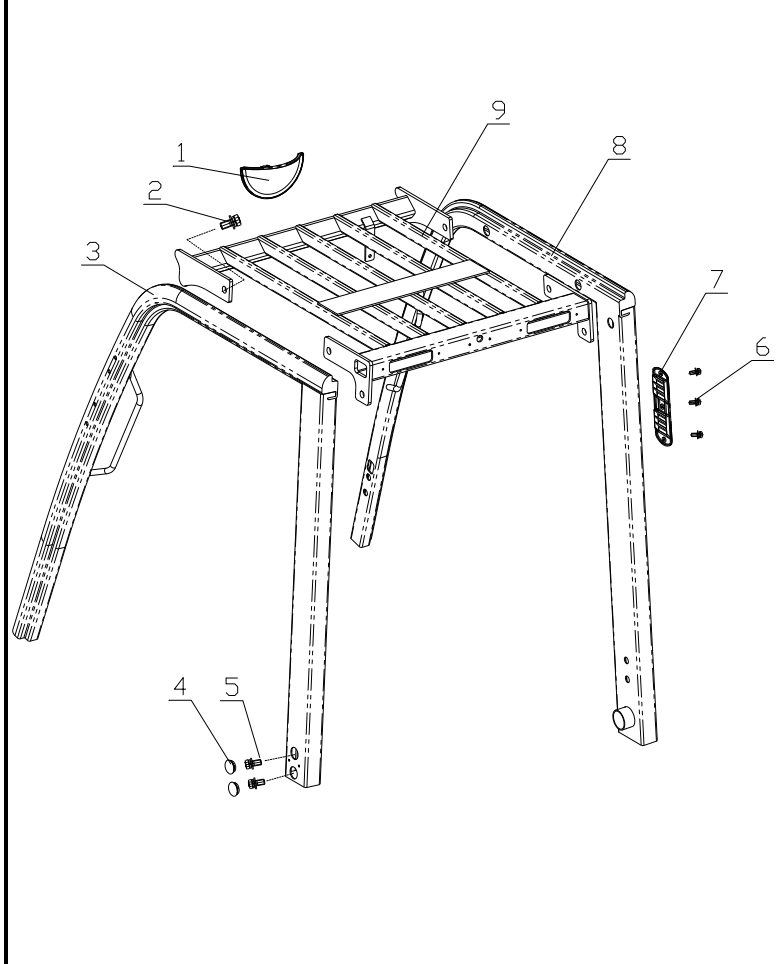
	序号 Item	代号 Part No.	名称 Description	数量 Qty	备注或适用车型 Remarks or Serial No.	原物料码 Original Part No.
	19	300060060004	挡圈6 Check ring 6	2	For CE	G000896-000006-00
	20	300030190008	垫圈8 Washer	2	For CE	G000096-000008-00
	21	300030010015	垫圈8 Washer	2	For CE	G000093-000008-00
	22	204300030030	螺钉组件 Bolt	2	For CE	XF250-430100-800
	23	204302000291	机罩右侧板总成 Right side plate	1		XR310-435000-000
	24	204301000501	机罩总成 Hood assy	1		XR310-433000-000
	25	204300140447	底座弯板 Base, Bending plate	1		A300-432200-000

图 8 护顶架
Fig.8 Overhead guard

1.0t-3.5t
全部车型 All models of truck

	序号 Item	代号 Part No.	名称 Description	数量 Qty	备注或适用车型 Remarks Or Serial No.	原物料码 Original Part No.
	1	208100040005	球形后视镜 Rear mirror, Spherical	1		XF250-800005-G01
	2	310010080022	螺栓组件 Bolt assy	8		N163-420500-000
	3	208101002310	左支撑腿总成 Left pillar assy	1		XR310-830000-000
	4	208100050004	橡胶塞 Rubber plug	4		N163-800004-000
	5	310010080024	螺栓组件 Bolt assy	8		A300-800100-000
	6	300040070008	螺钉 M5×12 Screw M5×12	3		G000818-005012-00
	7	208100030001	盖板 Cover plate	1		N163-800001-000
	8	208101002266	右支撑腿总成 Right pillar assy	1		XR310-840000-000
	9	208102000319	顶架 Oberhead guard	1		XR310-820000-000

