

第一部分 传动系统目录

Part I Driving system contents

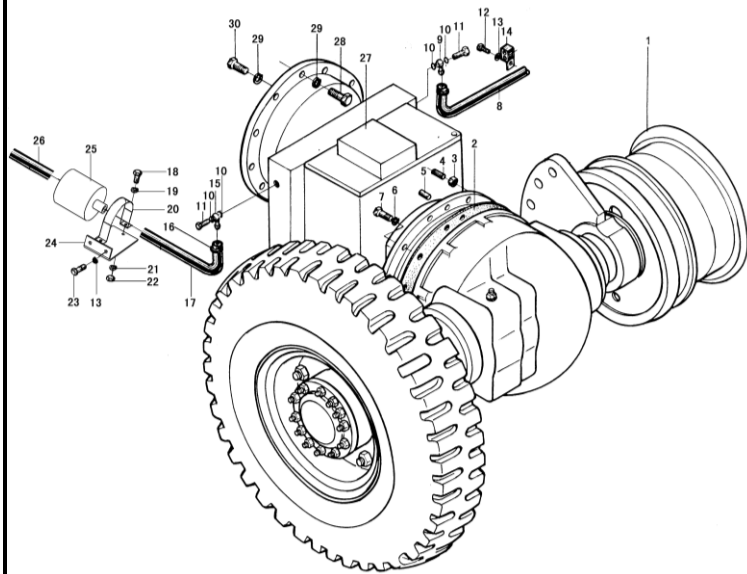
- | | | | |
|-------------------|-------------------------------|-------------------------------|-----------------------------|
| Ⓐ CPCD40/45-XRG76 | Ⓑ CPCD50-XRXG76 | Ⓐ ¹ CPC40/45-XRG76 | Ⓑ ¹ CPC50-XRXG76 |
| Ⓒ CPCD40/45-XRG75 | Ⓓ CPCD50-XRXG75 | Ⓒ ¹ CPC40/45-XRG75 | Ⓓ ¹ CPC50-XRXG75 |
| Ⓔ CPCD40/45-XRW34 | Ⓕ CPCD50-XRXW34 | Ⓔ CPCD40/45-XRW35 | Ⓕ CPCD50-XRXW35 |
| Ⓘ CPCD40/45-XRW76 | ⓵ CPCD50-XRXW76 | Ⓚ CPQYD40/45-XRW57 | Ⓛ CPQYD50-XRXW57 |
| Ⓜ CPCD40/45-XRG73 | Ⓜ ¹ CPC40/45-XRG73 | Ⓝ CPCD50-XRXG73 | Ⓝ ¹ CPC50-XRXG73 |
| Ⓞ CPCD40/45-XRG93 | Ⓞ CPCD50-XRG93 | | |

序号 Item	名称 Description	适用车型 Serial No.	页码 Page
图 1 Fig. 1	传动系统 Driving system	Ⓐ Ⓑ Ⓒ Ⓓ Ⓔ Ⓕ Ⓖ Ⓗ Ⓘ ⓵ Ⓚ Ⓛ Ⓜ Ⓜ ¹ Ⓝ Ⓝ ¹ Ⓞ Ⓞ ¹ 液力叉车 Hydraulic Forklift	1-1
图 2 Fig. 2	传动系统 Driving system	Ⓐ ¹ Ⓑ ¹ Ⓒ ¹ Ⓓ ¹ 机械叉车 Mechanical forklift	1-3
图 3 Fig. 3	驱动桥 Drive axle <2019-1-29	全部车型 All models of truck	1-5
图 3-1 Fig. 3-1	驱动桥 Drive axle ≥2019-1-29	全部车型 All models of truck	1-9
图 4 Fig. 4	前轮 (单轮) Front Wheel (Single)	单轮 Single Tyre	1-13
图 5 Fig. 5	前轮 (双轮) Front Wheel (Double)	双轮 Double Tyre	1-14
图 6 Fig. 6	制动器 Wheel brake	全部车型 All models of truck	1-16
图 7 Fig. 7	液力变速箱(其 1) (绍兴) Hydrodynamic gear-box(part-1) (ShaoXin)	4.0-X5t 液力变速箱 Hydrodynamic gear-box	1-19
图 8 Fig. 8	液力变速箱(其 2) (绍兴) Hydrodynamic gear-box(part-2) (ShaoXin)	4.0-X5t 液力变速箱 Hydrodynamic gear-box	1-22

序号 Item	名称 Description	适用车型 Serial No.	页码 Page
图 9 Fig. 9	控制阀总成 (绍兴) Control valve assy (ShaoXin)	4.0-X5t 液力变速箱 Hydrodynamic gear-box (电磁阀换向) (Solenoid valve Commutation)	1-26
图 10 Fig. 10	差速器 (绍兴) Differential (ShaoXin)	4.0-X5t 液力变速箱 Hydrodynamic gear-box	1-30
图 11 Fig. 11	双向离合器总成(液力式) (绍兴) Two-way clutch(tor-con type) (ShaoXin)	4.0-X5t 液力变速箱 Hydrodynamic gear-box	1-31
图 12 Fig. 12	单向离合器总成(液力式) (绍兴) One-way clutch(tor-con type) (ShaoXin)	4.0-X5t 液力变速箱 Hydrodynamic gear-box	1-33
图 13 Fig. 13	油泵总成 (绍兴) Charging pump (ShaoXin)	4.0-X5t 液力变速箱 Hydrodynamic gear-box	1-35
图 14 Fig. 14	变速器(机械式 其 1) 绍兴 ShaoXin Transmission(clutch type part-1)	4.0-X5t 机械变速箱 Mechanical gear-box	1-36
图 15 Fig. 15	变速器(机械式 其 2) 绍兴 ShaoXin Transmission(clutch type part-2)	4.0-X5t 机械变速箱 Mechanical gear-box	1-40
图 16 Fig. 16	变速器(机械式 其 3) 绍兴 ShaoXin Transmission(clutch type part-3)	4.0-X5t 机械变速箱 Mechanical gear-box	1-41
图 17 Fig. 17	变速器(机械式 其 4) 绍兴 ShaoXin Transmission(clutch type part-4)	4.0-X5t 机械变速箱 Mechanical gear-box	1-43
图 18 Fig. 18	变速器(机械式 其 5) 绍兴 ShaoXin Transmission(clutch type part-5)	4.0-X5t 机械变速箱 Mechanical gear-box	1-45
图 19 Fig. 19	变速器(机械式 其 6) 绍兴 ShaoXin Transmission(clutch type part-6)	4.0-X5t 机械变速箱 Mechanical gear-box	1-47

图1 传动系统
Fig.1 Driving system

- | | | | |
|--------------------|--------------------|-------------------|-----------------|
| Ⓐ CPCD40/45-XRG76 | Ⓑ CPCD50-XRXG76 | Ⓒ CPCD40/45-XRG75 | Ⓓ CPCD50-XRXG75 |
| Ⓔ CPCD40/45-XRW34 | Ⓕ CPCD50-XRXW34 | Ⓖ CPCD40/45-XRW35 | Ⓗ CPCD50-XRXW35 |
| Ⓚ CPQYD40/45-XRW57 | Ⓛ CPQYD40/45-XRW57 | Ⓛ CPCD40/45-XRW76 | Ⓜ CPCD50-XRXW76 |
| Ⓜ CPCD40/45-XRG73 | Ⓝ CPCD50-XRXG73 | Ⓞ CPCD40/45-XRG93 | Ⓟ CPCD50-XRG93 |



序号 Item	物料码 Part No.	名称 Description	数量 Qty	备注或适用车型 Remarks or Serial No.	原物料码 Original Part No.
1	20110000016	驱动桥 Drive axle	1		R450-110000-000
3	300020010004	螺母 M12 Nut M12	2		G006170-000012-00
4	300070040005	螺柱 M12×35 Stud M12×35	2		G000898-012035-00
5	300050100010	销 B10×30 Pin B10×30	1		G000120-010030-01
6	300030010002	垫圈 12 Washer 12	12		G000093-000012-00
7	300010040035	螺栓 M12×35 Bolt M12×35	10		G005783-012035-00
8	209990004226	低压胶管 Rubber pipe	1		XR460-100002-000
12	300010040169	螺栓 M8×16 Bolt M8×16	4		G005783-008016-00
13	300030010015	垫圈 8 Washer 8	6		G000093-000008-00
14	310040010003	抱箍 Clamp	4		R450-600003-000
16	209990000837	蜗杆传动式软管环箍 30 Clamp	6		Q675-30-G00
17	209990004260	低压胶管 Rubber pipe	1		A462-100001-000
18	300010040148	螺栓 M6×16 Bolt M6×16	2		G005783-006016-00
19	300030040013	垫圈 6 Washer 6	2		G0097P1-000006-00

图 1 传动系统 Fig.1 Driving system		Ⓐ CPCD40/45-XRG76	Ⓑ CPCD50-XRXG76	Ⓒ CPCD40/45-XRG75	Ⓓ CPCD50-XRXG75	
		Ⓔ CPCD40/45-XRW34	Ⓕ CPCD50-XRXW34	Ⓖ CPCD40/45-XRW35	Ⓗ CPCD50-XRXW35	
		Ⓚ CPQYD40/45-XRW57	Ⓛ CPQYD40/45-XRW57	Ⓛ CPCD40/45-XRW76	Ⓜ CPCD50-XRXW76	
		Ⓜ CPCD40/45-XRG73	Ⓝ CPCD50-XRXG73	Ⓞ CPCD40/45-XRG93	Ⓟ CPCD50-XRG93	
序号 Item	物料码 Part No.	名称 Description	数量 Qty	备注或适用车型 Remarks or Serial No.	原物料码 Original Part No.	
20	204201000199	抱箍 Clamp	1		40DH-100007	
21	300030010014	垫圈 6 Washer 6	2		G000093-000006-00	
22	300020010005	螺母 M6 Nut M6	2		G006170-000006-00	
23	300010040171	螺栓 M8×18 Bolt M8×18	2		G005783-008018-00	
24	201200080008	支架 Bracket	1		40DH-100006	
25	206500010016	液压滤清器 Hydraulic oil filter	1		YK0812A5-0000-G00	
26	209990004216	低压胶管 Rubber pipe	1	除 Ⓒ Ⓓ	XR460-100001-000	
26	201600060256	低压胶管 Rubber pipe	1	Ⓒ Ⓓ	XR462-140001-000	
27	201200000364	液力传动变速箱 Automatic transmission	1	Ⓐ Ⓑ Ⓒ Ⓓ	XR460-120000-G00	
27	201200000365	液力传动变速箱 Automatic transmission	1	Ⓔ Ⓕ Ⓖ Ⓗ Ⓛ Ⓜ	XR463-120000-G00	
27	201200000366	液力传动变速箱 Automatic transmission	1	Ⓚ Ⓛ	XR464-120000-G00	
27	201200000339	液力传动变速箱 Automatic transmission	1	Ⓜ Ⓝ Ⓞ Ⓟ	XR461-120000-G00	
28	300010040013	螺栓 M10×35 Bolt M10×35	12		G005783-010035-00	
29	300030010001	垫圈 10 Washer 10	24		G000093-000010-00	
30	300010040009	螺栓 M10×25 Bolt M10×25	12		G005783-010025-00	

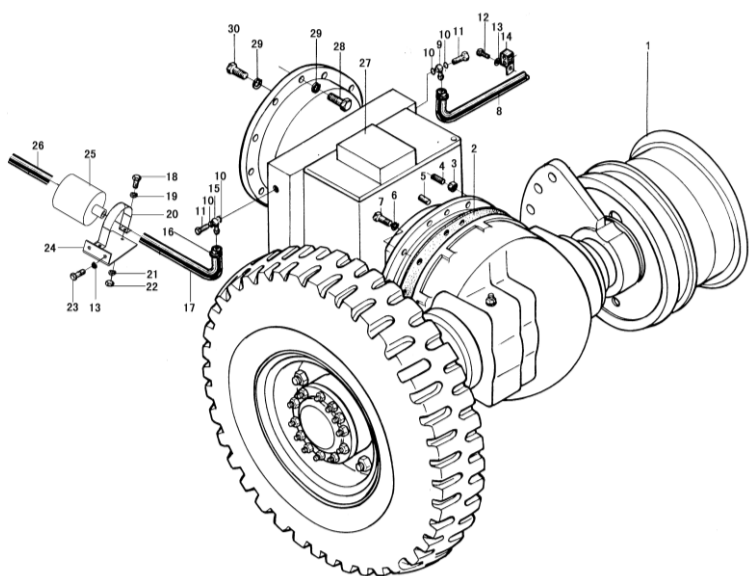


图2 传动系统 Fig.2 Driving system		A1) CPC40/45-XRG76 M1) CPC40/45-XRG73		B1) CPC50-XRXG76 N1) CPC50-XRXG73		C1) CPC40/45-XRG75		D1) CPC50-XRXG75	
序号 Item	物料码 Part No.	名称 Description	数量 Qty	备注或适用车型 Remarks or Serial No.	原物料码 Original Part No.				
1	20110000020	驱动桥 Drive axle	1		R441-110000-000				
2	201200080333	变速左支架 Mechanical transmission left bracket	1		XR452-100200-000				
3	300010040019	螺栓 M10x50 Bolt M10x50	10		G005783-010050-00				
4	300050030001	销 10x18 Pin 10x18	2		G000119-010018-00				
5	810120000147	1598H 密封胶 1598H Salant	1		159895				
6	300030090008	垫圈 14 Washer 14	12		G007244-000014-00				
7	300010040054	螺栓 M14x35 Bolt M14x35	12		G005783-014035-00				
8	201300000011	主减速器 Reduction transmission	1		EQ1092F-G00				
9	310010010038	螺栓 Bolt	8	<2018-05-26	H510-100001-000				
9	310010010053	螺栓 Bolt	8	≥2018-05-26	AD450-100002-000				
10	201200010023	传动轴总成 Driving shaft	1		GR501-105000-000				
11	300030010003	垫圈 14 Washer 14	8		G000093-000014-00				
12	300020140007	螺母 M14 Nut M14	8		G006184-000014-00				
13	300010040033	螺栓 M12x30 Bolt M12x30	8		G005783-012030-00				

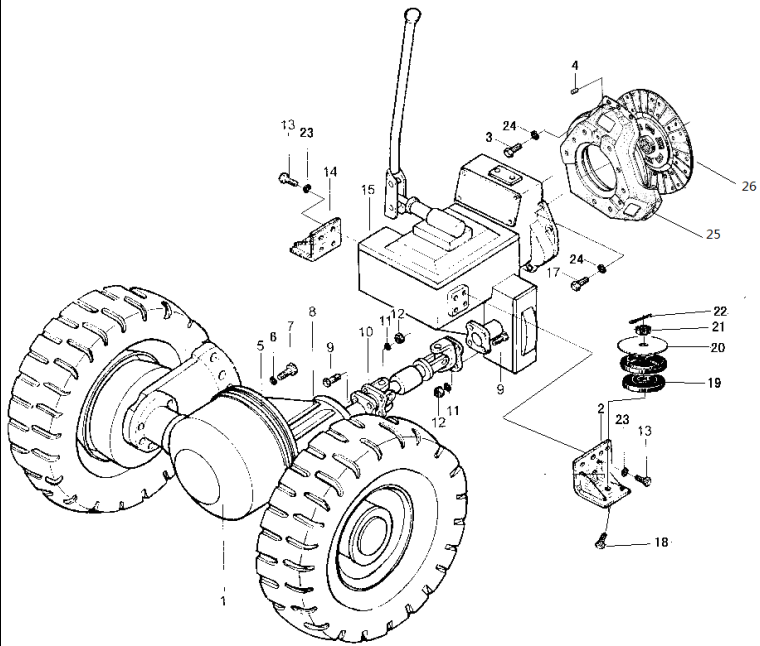


图2 传动系统 Fig.2 Driving system		Ⓐ1 CPC40/45-XRG76 Ⓜ1 CPC40/45-XRG73	Ⓑ1 CPC50-XRXG76 Ⓝ1 CPC50-XRXG73	Ⓒ1 CPC40/45-XRG75	Ⓓ1 CPC50-XRXG75	
序号 Item	物料码 Part No.	名称 Description	数量 Qty	备注或适用车型 Remarks or Serial No.	原物料码 Original Part No.	
14	201200080328	变速器右支架 Mechanical transmission right bracket	1		XR452-100300-000	
15	201200000352	机械变速箱 Transmission	1		XR452-120000-G00	
17	300010040013	螺栓 M10x35 Bolt M10x35	12		G005783-010035-00	
18	310010010039	螺栓 Bolt	2		H510-100002-000	
19	201200070007	减震垫 Anti-vibration pad	2		CB2204-4-G00	
20	201200100002	垫片 Gasket	2		H510-100003-000	
21	300020090008	螺母 M24 Nut M24	2		G006178-000024-00	
22	300050010058	销 5x50 Pin 5x50	2		G000091-005050-00	
23	300030010002	垫圈 12 Washer 12	8		G000093-000012-00	
24	300030010001	垫圈 10 Washer 10	22		G000093-000010-00	
25	201400000022	离合器压盘及盖总成 Press disc and case assy	1	Ⓐ1 Ⓒ1	XL111Y-ZA(P2)-G00	
25	201400130013		1	Ⓑ1 Ⓓ1	AD503-132000-G00	
26	201400100027	离合器从动盘总成 Clutch driven disc assy	1	Ⓐ1 Ⓒ1	AD450-131000-G00	
25	201400100017	离合器从动盘总成 Clutch driven disc assy	1	Ⓑ1 Ⓓ1	XL40C-Z(P1)-G00	

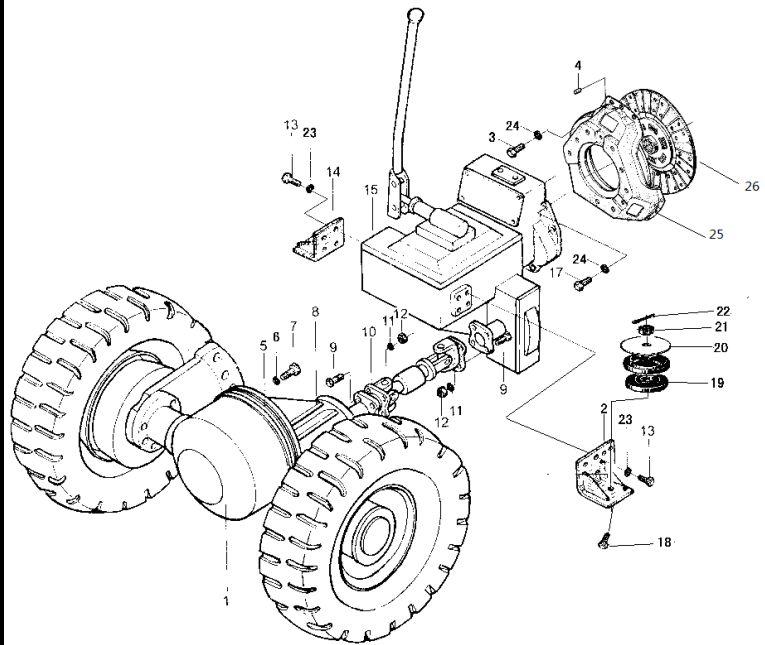
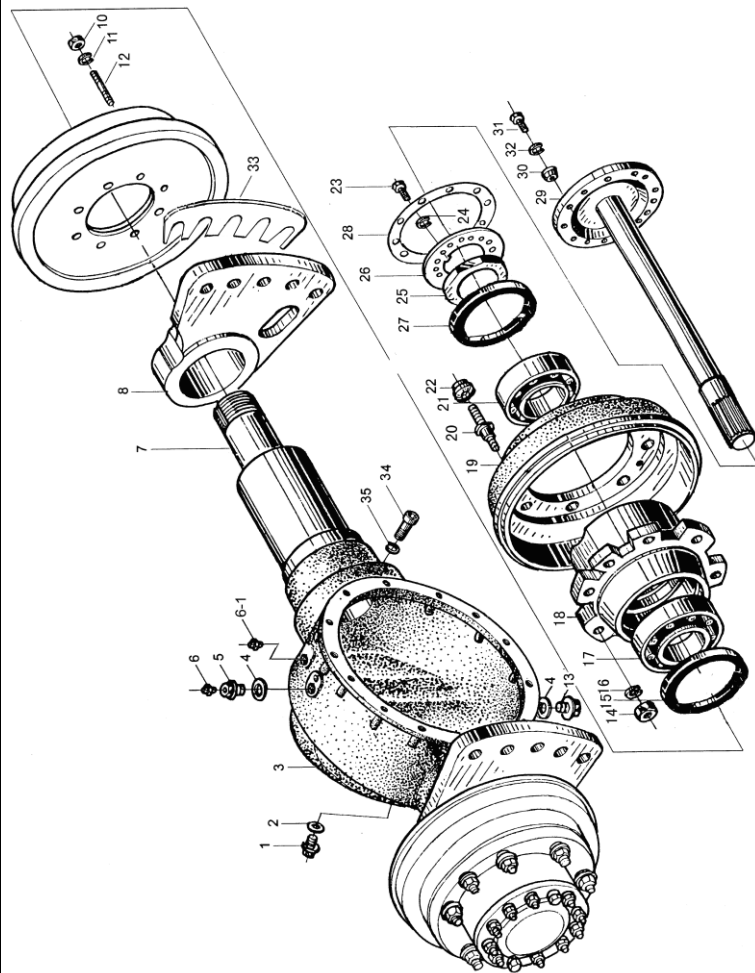


图3 驱动桥
Fig.3 Drive axle

<2018-3-01

全部车型
All models of truck

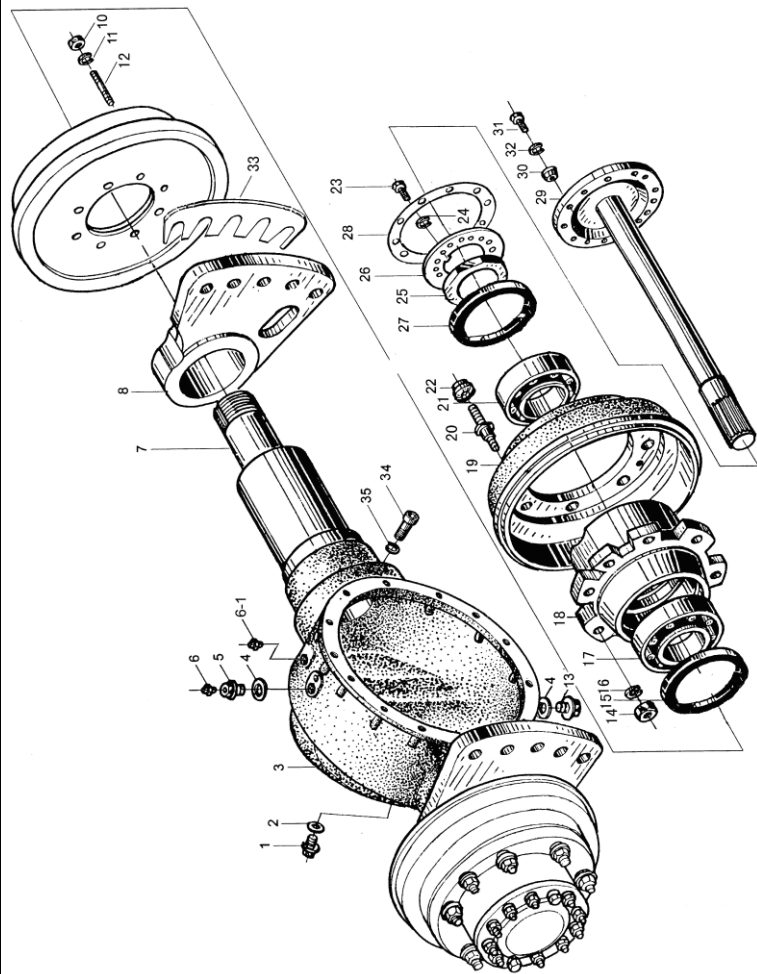


序号 Item	物料码 Part No.	名称 Description	数量 Qty	备注或适用车型 Remarks or Serial No.	原物料码 Original Part No.
1	300270010006	螺塞 M16×1.5 Plug M16×1.5	1		J001000-0161P5-00
2	300030140004	垫圈 16 Washer 16	1		J000982-000016-00
A1	201100100040	桥体 Axle	1	液力叉车Hydraulic Forklift ,INC:3,7,34,35	R450-111000-000
A2	201100000020	桥体 Axle	1	机械车 Mechanical forklift INC:3,7,34,35	R441-110000-000
3	NO PART NO.	桥壳 Axle housing	1	(A1) 不单独提供 Do not supply separately	
3	NO PART NO.	桥壳 Axle housing	1	(A2) 不单独提供 Do not supply separately	
4	300030140016	垫圈 22 Washer 22	2		J000982-000022-00
5	201100050038	螺塞 Plug	1		RC250-110004-000
6	201100050029	呼吸器 breathing	1		XB450-115000-000
7	NO PART NO.	轴管 Bushing	2	(A1) 不单独提供 Do not supply separately	
7	NO PART NO.	左轴管 Left Bushing	1	(A2) 不单独提供 Do not supply separately	
7	NO PART NO.	右轴管 Right Bushing	1	(A2) 不单独提供 Do not supply separately	
8	201100250108	左支撑板 Left Plate	1	液力叉车 Hydraulic Forklif	R450-110001-001
8	201100250098	右支撑板 Right Plate	1	液力叉车 Hydraulic Forklif	R450-110002-001
8	201100250027	左支撑板 Left Plate	1	机械叉车 Mechanical forklift	R441-110001-000

图3 驱动桥
Fig.3 Drive axle

<2018-3-01

全部车型
All models of truck

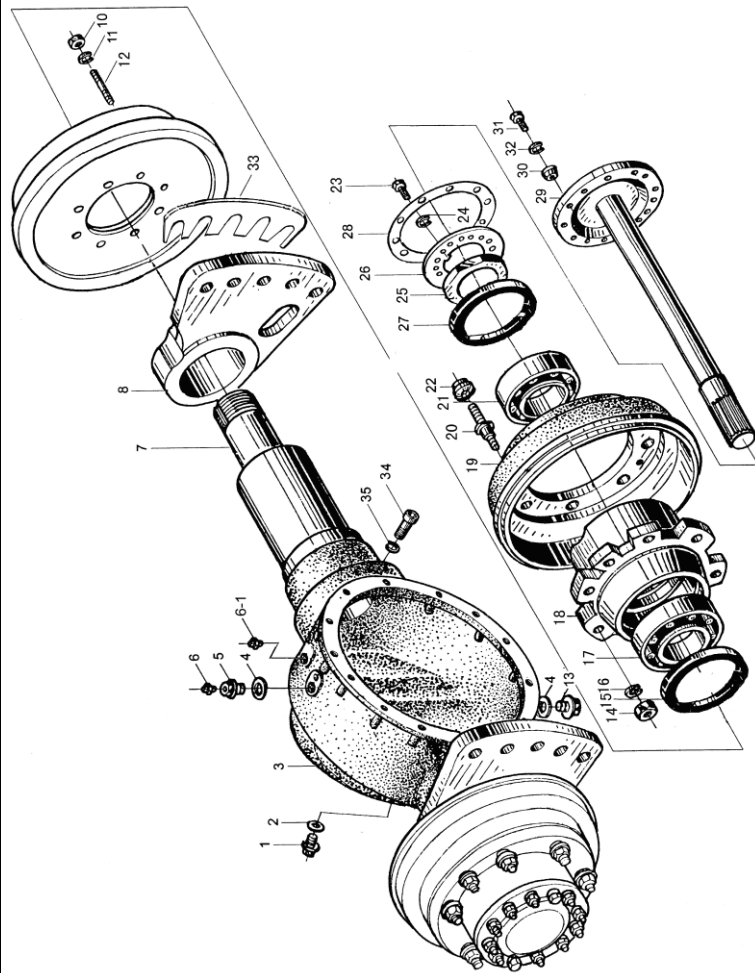


序号 Item	物料码 Part No.	名称 Description	数量 Qty	备注或适用车型 Remarks or Serial No.	原物料码 Original Part No.
8	201100250012	右支撑板 Right Plate	1	机械叉车 Mechanical forklift	R441-110002-000
9		右制动器 Right Brake	1	见图6 See Fig.6	
9		左制动器 Left Brake	1	见图6 See Fig.6	
11	300030010004	垫圈 16 Washer 16	16		G000093-000016-00
12	310010020066	制动器连接螺栓 Bolt	16	液力叉车 Hydraulic Forklif	R450-110010-000
12	310010020046	制动器连接螺栓 Bolt	16	机械叉车 Mechanical forklift	XB450-110003-000
13	300270020004	螺塞 M22×1.5 Plug	1		J001001-0221P5-00
14	300020020009	螺母 M20×1.5 Nut	16		G006171-000020-02
15	300320040037	油封 PD160×115×14 Oil seal	2		HG40692-160011514-00
16	300030010006	垫圈 20 Washer	16		G000093-000020-00
17	300140020014	轴承 32217 Bearing	2		GT00297-0032217-00
18	201100090008	轮毂 Hub	2		R450-110003-000
19	201100170019	制动鼓 Brake drum	2		R450-110004-001
20	201100020017	轮毂螺栓 Hub bolt	16	单轮 Single tyre	R450-110007-000
20	201100020022	轮毂螺栓 Bolt, Hub	16	双轮 Double tyre	R450-110002-500

图3 驱动桥
Fig.3 Drive axle

<2018-3-01

全部车型
All models of truck



序号 Item	物料码 Part No.	名称 Description	数量 Qty	备注或适用车型 Remarks or Serial No.	原物料码 Original Part No.
21	300140020072	轴承 7815 Bearing	2		GT00297-0007815-00
22	201100080004	轮毂螺母 Hub nut	16	单轮 Single tyre	N163-110015-000
22	310020010049	螺母 Nut	16	双轮 Double tyre 见图 5 See Fig.5 Item 3	R450-110003-500
22	310020010048	螺母 Nut	16	双轮 Double tyre 见图 5 See Fig.5 Item 1	R450-110001-500
23	300010040145	螺栓 M6×12 Bolt M6×12	4		G005783-006012-00
24	300030010014	垫圈 6 Washer 6	4		G000093-000006-00
25	201100080009	锁紧螺母 Lock nut	2		R450-110006-000
26	201100110002	锁紧片 Lock washer	2		N163-110011-000
27	300320040010	油封 PD140×110×14 Oil seal	2		HG40692-140011014-00
28	201100160018	纸垫 Gasket	2		R450-110008-000
29	201100010009	半轴 Half-axle	2	液力叉车 Hydraulic Forklif	R450-110005-000
29	201100010003	左半轴 Left Half-axle	1	机械叉车 Mechanical forklift	JP451-110001-000
29	201100010002	右半轴 Right Half-axle	1	机械叉车 Mechanical forklift	JP451-110002-000
30	201100070009	压紧衬套 Clamp split-ring	24		N163-110019-000

图 3-1 驱动桥总成
Fig.3-1 Drive axle assy

≥2018-03-01

全部车型
All models of truck

序号 Item	物料码 Part No.	名称 Description	数量 Qty	备注或适用车型 Remarks or Serial No.	原物料码 Original Part No.
A1	201100000621	驱动桥总成 Drive axle assy	1	液力叉车 Hydraulic Forklift	A460-110000-001
A2	201100000620	驱动桥总成 Drive axle assy	1	机械叉车 Mechanical forklift	A450-110000-001
1	图 7 Fig.7	左制动器总成 Brake assy,LH	1		
2	201100250108	左支撑板 Left Plate	1	液力叉车 Hydraulic Forklift	R450-110001-001
2	201100250027	左支撑板 Left Plate	1	机械叉车 Mechanical forklift	R441-110001-000
3	300270010006	螺塞 M16×1.5 Plug M16×1.5	1		J001000-0161P5-00
4	300030140004	垫圈 16 Washer 16	1		J000982-000016-00
5	201100050029	呼吸器 Vented plug	1		XB450-115000-000
6	201100050038	螺塞 Plug	1		RC250-110004-000
7	300030140016	垫圈 22 Washer 22	1		J000982-000022-00
8	300270020004	螺塞 M22×1.5 Plug	1		J001001-0221P5-00
9	300030140016	垫圈 22 Washer 22	1		J000982-000022-00
10	201100100324	桥体 Axle	1	≥2018-03-01 液力叉车 Hydraulic Forklift	A460-111001-001
10	201100100325	桥体 Axle	1	机械叉车 Mechanical forklift	A450-111001-001

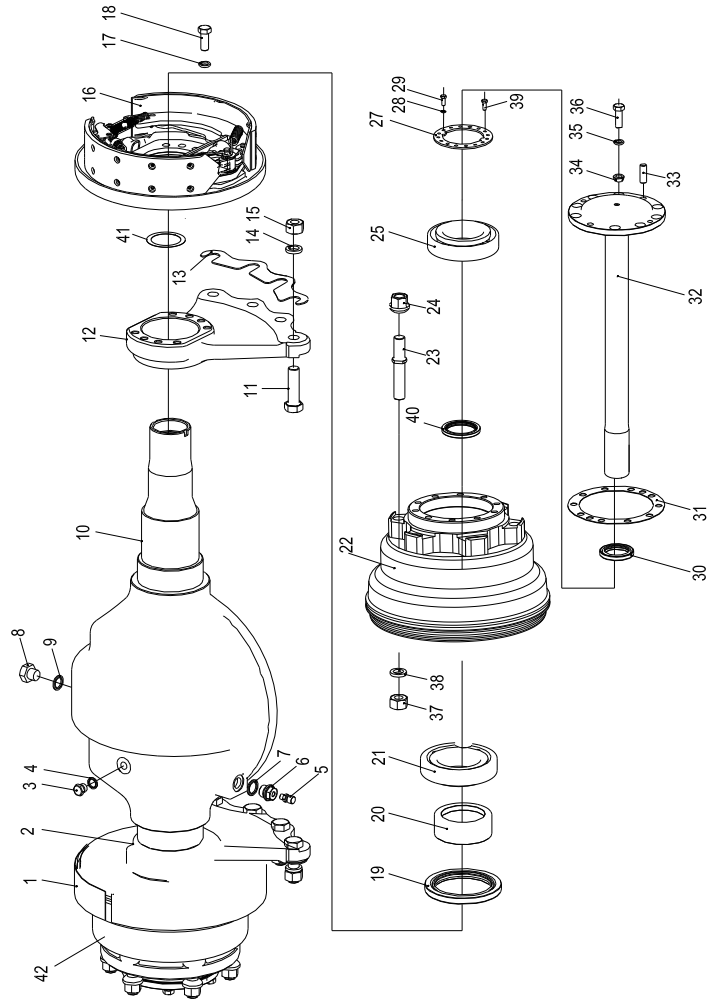


图 3-1 驱动桥
Fig.3-1 Drive axle

≥2018-03-01

全部车型
All models of truck

	序号 Item	物料码 Part No.	名称 Description	数量 Qty	备注或适用车型 Remarks or Serial No.	原物料码 Original Part No.
	10	201100100118	桥体 Axle	1	<2018-03-01 液力叉车 Hydraulic Forklift	A460-111001-000
	11	300010100003	连接螺栓 Bolt	10		G000027-024080-01
	12	201100250098	右支撑板 Right Plate	1	液力叉车 Hydraulic Forklift	R450-110002-001
	12	201100250012	右支撑板 Right Plate	1	机械叉车 Mechanical forklift	R441-110002-000
	13	201100160006	垫板 Plate	2		R450-110009-000
	14	300030090004	垫圈 24 Washer 24	10		G007244-000024-00
	15	300020010028	螺母 M24 Nut M24	10		G006170-000024-01
	16	或图 7 Fig.7	右制动器总成 Brake assy,RH	1		
	17	300030010004	垫圈 16 Washer 16	16		G000093-000016-00
	18	310010020046	螺栓 Bolt,	16		XB450-110003-000
	19	201100140006	油封 PD170×120×12 Oil seal	2		A450-115000-G00
	20	201100150011	油封座 Oil Seat	2		A450-110003-001
	21	201100130004	轴承 7219E Bearing	2		A450-112000-G00
	22	201100090079	轮毂 Hub	2		A450-110004-001

图 3-1 驱动桥总成
Fig.3-1 Drive axle assy

≥2018-03-01

全部车型
All models of truck

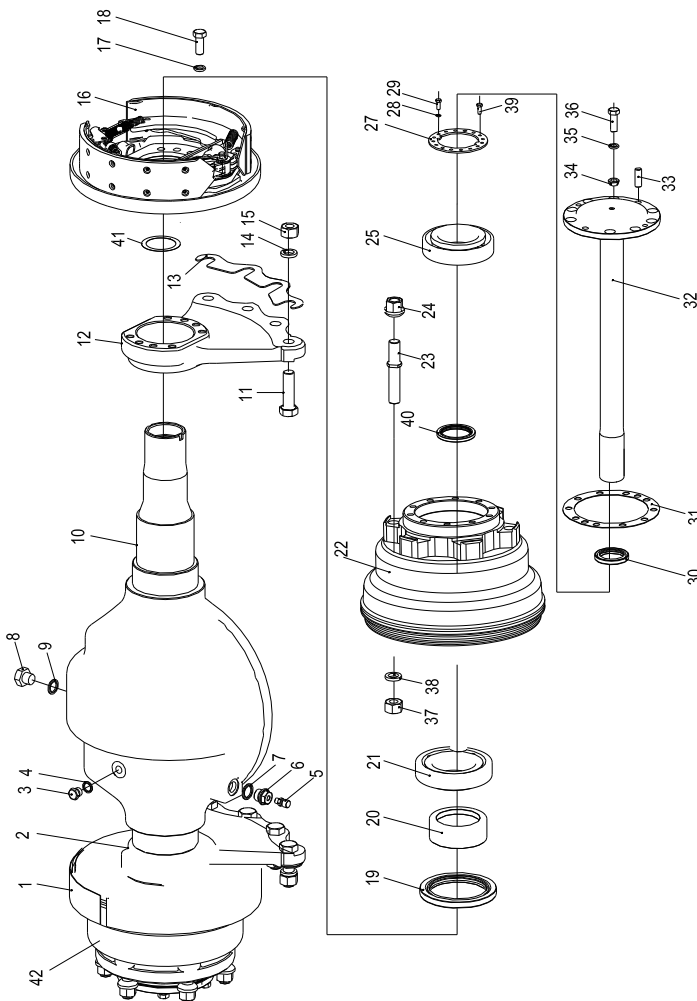
	序号 Item	物料码 Part No.	名称 Description	数量 Qty	备注或适用车型 Remarks or Serial No.	原物料码 Original Part No.
	23	201100020017	轮毂螺栓 Bolt, Hub	16	3.0t-3.8t 单轮 Single tyre	R450-110007-000
	23	201100020022	轮毂螺栓 Bolt, Hub	16	3.0t-3.8t 双轮 Double tyre	R450-110002-500
	22	201100080004	轮毂螺母 Hub nut	16	单轮 Single tyre	N163-110015-000
	25	201100130003	轴承 32216 Bearing	2		A450-113000-G00
	27	201100110007	锁紧片 Lock washer	2		A450-110001-000
	28	300030010014	垫圈 6 Washer 6	4		G000093-000006-00
	29	300010040145	螺栓 M6×12 Bolt M6×12	4		G005783-006012-00
	30	300320010019	油封 FB115×140×14 Oil seal	2		G9877P1-140011514-01
	31	201100160018	纸垫 Gasket	2		R450-110008-000
	32	201100010009	半轴 Half shaft	2	液力叉车 Hydraulic Forklift	R450-110005-000
	32	201100010003	左半轴 Half shaft, left	1	机械叉车 Mechanical forklift	JP451-110001-000
	32	201100010002	右半轴 Half shaft, right	1	机械叉车 Mechanical forklift	JP451-110002-000
	33	300050030053	销 D12×35 Pin D12×35	2		G000119-012035-03
	34	201100070009	压紧衬套 Clamp split-ring	20		N163-110019-000
	35	300030010002	垫圈 12 Washer 12	20		G000093-000012-00

图5 前轮（双轮）
Fig.5 Front wheel (Double tyre)

双轮 全部车型
Double tyre All models of truck

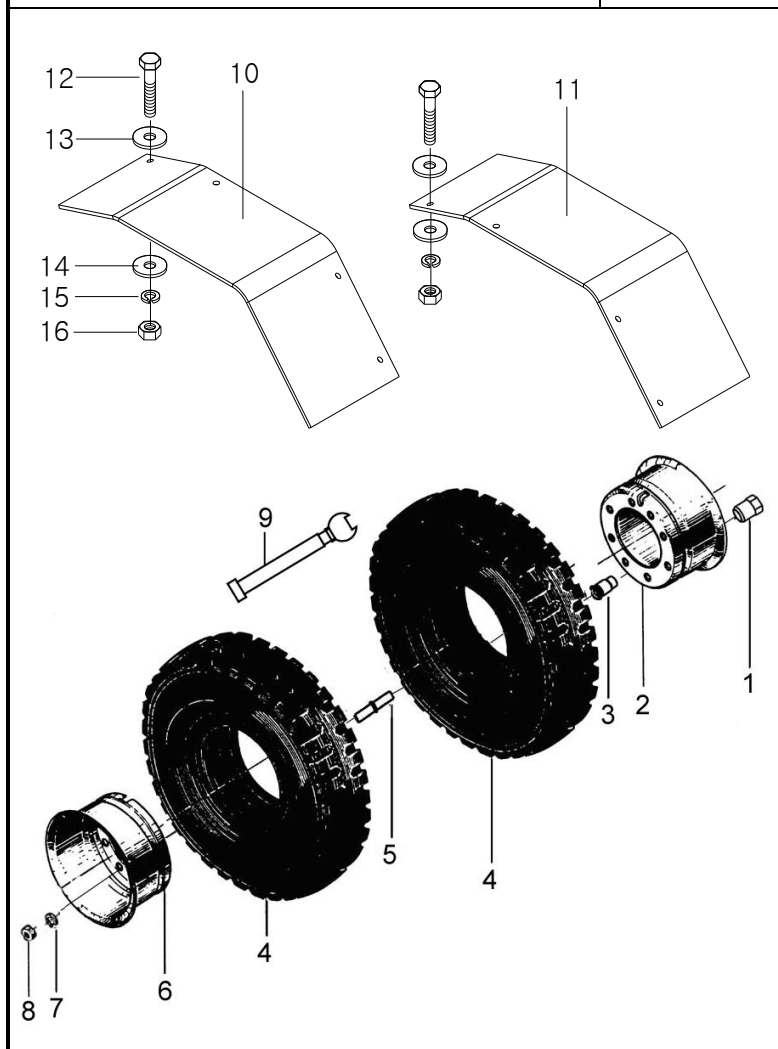
	序号 Item	物料码 Part No.	名称 Description	数量 Qty	备注或适用车型 Remarks or Serial No.	原物料码 Original Part No.
	1	310020010048	螺母 Nut	16		R450-110001-500
	2	201500040046	轮辋总成 Wheel rim	2	黑色 Black	R450-112000-500
	3	310020010049	螺母 Nut	16		R450-110003-500
	4	300150040059	充气轮胎 8.25-15-14PR Pneumatic tyre	4	标配 Standard	GT02982-008251514-05
	4	300150010014	实心胎 8.25-15 Solid tyre	4	选配 Optional	GT10823-0082515-15
	5	201100020022	轮毂螺栓 Hub bolt	16		R450-110002-500
	6	201500040045	轮辋总成 Wheel rim	2	黑色 Black	R450-111000-500
	7	300030010006	垫圈 20 Washer 20	16		G000093-000020-00
	8	300020020009	螺母 M20×1.5 Nut M20×1.5	16		G006171-000020-02
	9	201500050009	气门接长管 Extension tube	2	充气轮胎 Inflated Tyre	50CDA-210001
	10	204002010140	左挡泥板 Fender left	1		AS450-460001-000
	11	204002010130	右挡泥板 Fender right	1		AS450-460002-000
	12	300010040041	螺栓 M12×50 Bolt M12×50	8		G005783-012050-00
	13	300030040003	垫圈 12 Washer 12	8		G0097P1-000012-00
	14	300030190002	垫圈 12 Washer 12	8		G000096-000012-00

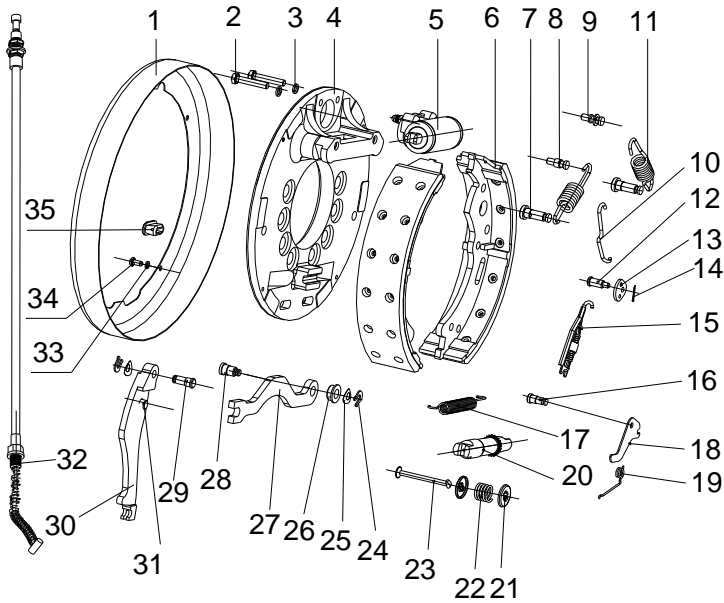
图5 前轮（双轮）
Fig.5 Front wheel (Double tyre)

双轮 全部车型
Double tyre All models of truck

图5 前轮（双轮） Fig.5 Front wheel (Double tyre)	序号 Item	物料码 Part No.	名称 Description	数量 Qty	备注或适用车型 Remarks or Serial No.	原物料码 Original Part No.
	15	300030010002	垫圈 12 Washer 12	8		G000093-000012-00
	16	300020010004	螺母 M12 Nut M12	8		G006170-000012-00

图6 制动器
Fig.6 Wheel brake

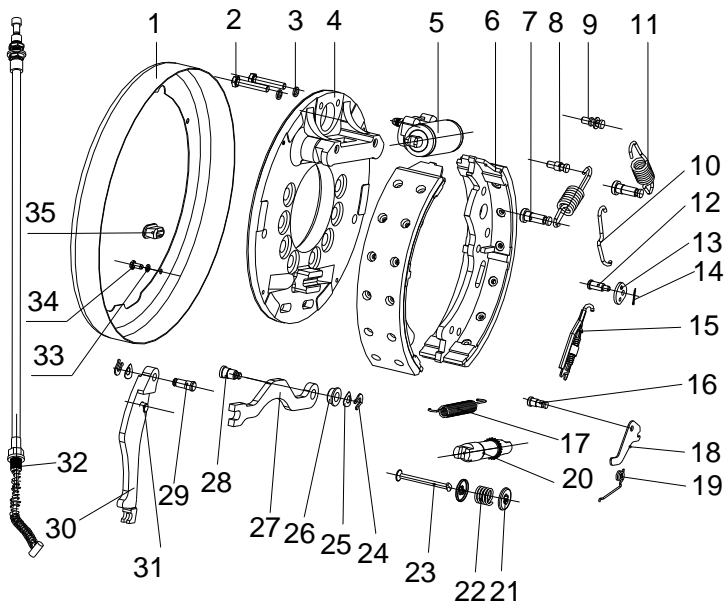
全部车型
All models of truck



序号 Item	物料码 Part No.	名称 Description	数量 Qty	备注或适用车型 Remarks or Serial No.	原物料码 Original Part No.
A1	201700000183	左制动器总成 Brake assy,LH	1		R450-113000-002
A3	201700000178	右制动器总成 Brake assy,RH	1		R450-114000-002
1	810120000106	罩壳 Encloser	1		AOIC3-72081-HC50
2	810120000107	螺栓 Bolt	2		GB5782-86-M8x25
3	810120000108	弹簧垫圈 Spring washer	2		GB95-87-φ8
4	810120000109	制动底板(左) Brake plate,LH	1		AOIC3-70091
4	810120000110	制动底板(右) Brake plate,RH	1		AOIC3-70101
5	810120000111	制动分泵总成 Wheel cylinder assy	1		HRAOIC3-702
6	810120000112	制动蹄带摩擦片总成 Brake shoe	2		FHXX-HRAOIC3-705
7	810120000145	回位弹簧销 Pin, back spring	2		AOIC3-72041
8	810120000114	销 1 Pin 1	1		25783-71460G
9	810120000115	销 2 Pin 2	1		25783-71450G
10	810120000116	上拉杆(左) Upper link,LH	1		25783-71470G-L
10	810120000117	上拉杆(右) Upper link,RH	1		25783-71470G-R
11	810120000373	回位弹簧 Back spring	2		25783-71330G

图6 制动器
Fig.6 Wheel brake

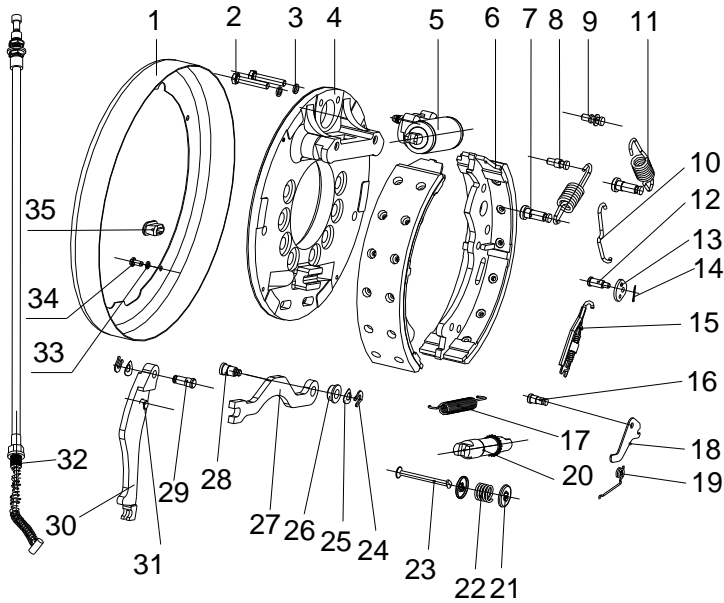
全部车型
All models of truck



序号 Item	物料码 Part No.	名称 Description	数量 Qty	备注或适用车型 Remarks or Serial No.	原物料码 Original Part No.
12	810120000119	摇臂销 Pin, rocker arm	1		25783-71430G
13	810120000120	摇臂 Rocker arm	1		25783-71500G
14	810120000121	开口销 Split pin	1		GB91-86-φ1.6×16
15	810120000122	弹簧铆接装置 Spring& fitting assy	1		AOIC3-71210G
16	810120000123	扭簧销 Pin, torsion spring	1		25783-71410G
17	810120000124	下拉簧 Extension spring	1		25783-71370G
18	810120000125	棘爪 Lever	1		25783-71480G
19	810120000126	扭簧(左) Torsion spring, LH	1		25783-71360G-L
19	810120000127	扭簧(右) Torsion spring, RH	1		25783-71360G-R
20	810120000128	调整器总成(左) Adjusting cover, LH	1		25783-71160G-L
20	810120000129	调整器总成(右) Adjusting cover, RH	1		25783-71160G-R
21	810120000130	压簧座 compression spring seat	4		25783-71340G
22	810120000131	压簧 Compression spring	2		25783-71350G
23	810120000132	压簧拉杆 Pull bar	2		AOIC3-72011
24	810120000028	挡圈 Retaining ring	2		24433-70170G

图6 制动器
Fig.6 Wheel brake

全部车型
All models of truck



序号 Item	物料码 Part No.	名称 Description	数量 Qty	备注或适用车型 Remarks or Serial No.	原物料码 Original Part No.
25	810120000029	弹性垫片 Elastic packin	2		24433-70160G
26	810120000135	衬套 Bushing	1		AOIC3-72061
27	810120000136	手制动推杆 Lever pushing	1		AOIC3-72051
28	810120000137	推杆销 Pin	1		AOIC3-72071
29	810120000009	拉杆销 Pin	1		24433-70150G
30	810120000139	手制动拉杆(左) Lever parking,LH	1		AOIC3-72031
30	810120000145	手制动拉杆(右) Lever parking,RH	1		AOIC3-72041
31	810120000141	销 Pin	1		AOIC3-72021
32	201700050002	手制动拉索, 左 Parking brake cable,LH	1		R450-113200-000
32	201700050001	手制动拉索, 右 Parking brake cable,RH	1		R450-114200-000
33	810120000142	弹簧垫圈 Spring washer	4		GB95-87-φ6
34	810120000143	螺栓 Bolt	4		GB5782-86-M6×10
35	810120000144	胶堵 Rubber plug	2		25783-71490G

图7 液力变速箱(其1)(绍兴)(ShaoXin)
Fig.7 Hydrodynamic gear-box(part-1)

4.0-X5t
液力变速箱 Hydrodynamic gear-box

序号 Item	物料码 Code No.	名称 Description	数量 Qty	备注或适用车型 Remarks or Serial No.	原物料码 Original Part No.
1	810110000301	调整垫片 Adjusting shim	按需 need		YQX45-0012
2	810110000302	轴承 NUP306EM Bearing	1		GB283-94-NUP306EM
3	810110000303	螺旋齿轮组件 Helical gear assy	1	见图10 序号11	YQX45-0900
4	810110000304	轴承 31312 Bearing 31312	1		GB297-94-31312
5	810110000305	O 形密封圈 150×3.1 O-ring 150×3.1	1		GB1235-76-150×3.1
6	810110000306	轴承座 Cap,bearing	1		YQX45-0402
7	810110000307	双向油封 Two-way oil seal	1		YQX45-0410
8	810110000308	O 形密封圈 60×3.1 O-ring 60×3.1	1		GB1235-76-60×3.1
9	810110000309	隔套 Spacer	1		YQX45-0403
10	810110000310	调整垫 Adjustable pad ($\delta=0.1,0.2,0.5$)	按需 need		YQX45-0404
11	810110000311	轴承 31311 Bearing 31311	1		GB297-94-31311
12	810110000312	螺母 Nut	1		YQX45-0405
13	810110000313	弹簧垫圈 14 Spring washer 14	6		GB93-87-14
14	810110000314	螺栓M14×1.5×40 Bolt M14×1.5×40	6		GB5786-86- M14×1.5×40
15	810110000315	油管 Oil pipe	1		YQX45-0601

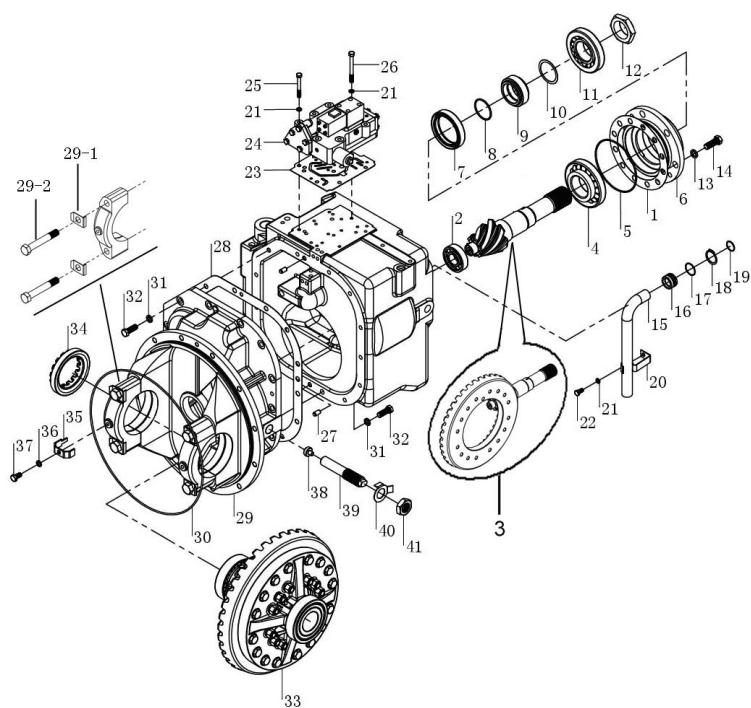


图7 液力变速箱(其1)(绍兴)(ShaoXin)
Fig.7 Hydrodynamic gear-box(part-1)

4.0-X5t
液力变速箱 Hydrodynamic gear-box

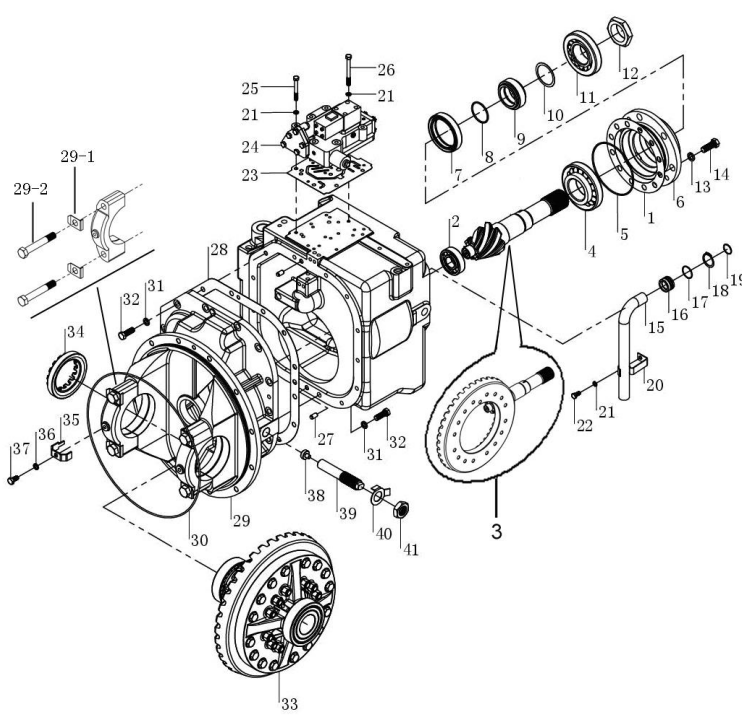
图7 液力变速箱(其1)(绍兴)(ShaoXin) Fig.7 Hydrodynamic gear-box(part-1)	序号 Item	物料码 Code No.	名称 Description	数量 Qty	备注或适用车型 Remarks or Serial No.	原物料码 Original Part No.
	16	810110000316	连接块 Connection bloc	1		YQX45-0602
	17	810110000317	O 形密封圈 31.5×1.8 O-ring 31.5×1.8	1		GB3452.1-92-31.5×1.8
	18	810110000234	轴用弹性挡圈 35 circlip for shaft 35	1		GB894.1-86-35
	19	810110000319	O 形密封圈 25×1.8 O-ring 25×1.8	1		GB3452.1-92-25×1.8
	20	810110000322	固定卡板 Fixed card board	1		YQX45-0019
	21	810110000061	弹簧垫圈 8 Spring washer 8	9		GB93-87-8
	22	810110000324	螺栓 M8×16 Bolt M8×16	1		GB5783-86-M8×16
	23	810110000325	纸垫 Paper washer	1		YQX45-0003
	24	见图 9 See Fig 9	控制阀总成 Control valve assy	1		
	25	810110000326	螺栓 M8×65 Bolt M8×65	7		GB5782-86-M8×65
	26	810110000327	螺栓 M8×90 Bolt M8×90	1		GB5782-86-M8×90
	27	810110000328	圆柱销 B10×20 Straight pin B10×20	2		GB119-86-B10×20
	28	810110000329	纸垫 Paper washer	1		YQX45-0004
	29	810110000330	减速架组件 Case assy, reducer	1		YQX45-0300A
	29-1	810110000331	锁片 locking plate	4		YQX45-0305

图7 液力变速箱(其1)(绍兴)(ShaoXin)
Fig.7 Hydrodynamic gear-box(part-1)

4.0-X5t
液力变速箱 Hydrodynamic gear-box

序号 Item	物料码 Code No.	名称 Description	数量 Qty	备注或适用车型 Remarks or Serial No.	原物料码 Original Part No.
29-2	810110000332	螺栓 Bolt	4		YQX45-0303A
30	810110000335	O 形密封圈 O-ring	1		YQX45-0304
31	810110000336	弹簧垫圈 12 Spring washer 12	14		GB93-87-12
32	810110000337	螺栓M12×1.25×35 Bolt M12×1.25×35	14		GB5786-86-M12×1.25×35
33	810110000338	差速器总成 Differential mechanism	1	见图 10 See Fig.10	YQX45-2000
33	810110000334	螺母 M18×1.5 Nut M18×1.5	4		GB9457-88-M18×1.5
34	810110000339	调整螺母 adjusting nut	2		YQX45-0007
35	810110000340	锁片 locking plate	2		YQX45-0006
36	810110000034	弹簧垫圈 10 Spring washer 10	2		GB93-87-10
37	810110000342	六角头带孔螺栓 hexagon-headed bolt with hole	2	头部带孔 hexagon head bolt with hole	YQX45-0005
38	810110000343	滑块 slide block	1		YQX45-0008
39	810110000344	螺柱 Double-screw bolt	1		YQX45-0009
40	810110000345	止动垫圈 tab washer	1		YQX45-0010
41	810110000346	螺母 M27×2 Nut M27×2	1		GB6173-86-M27×2

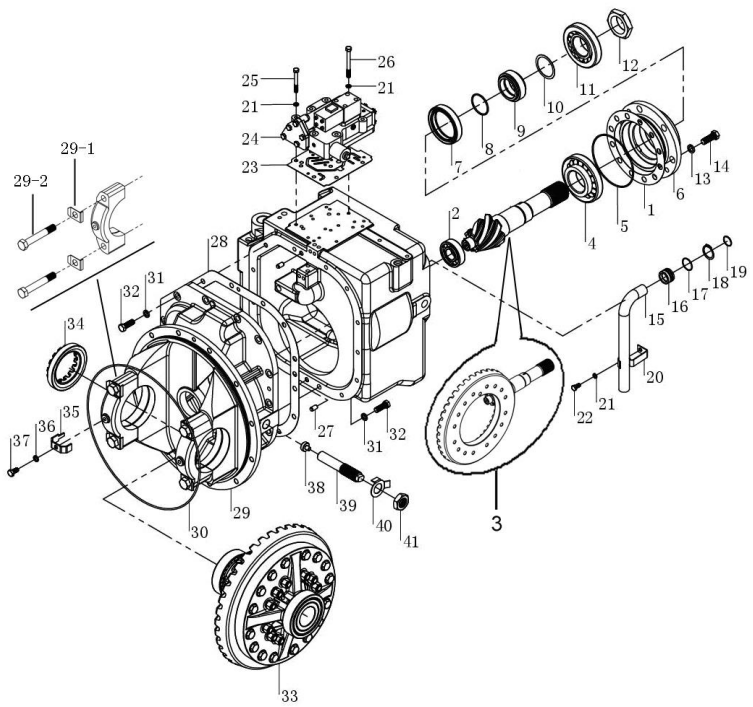
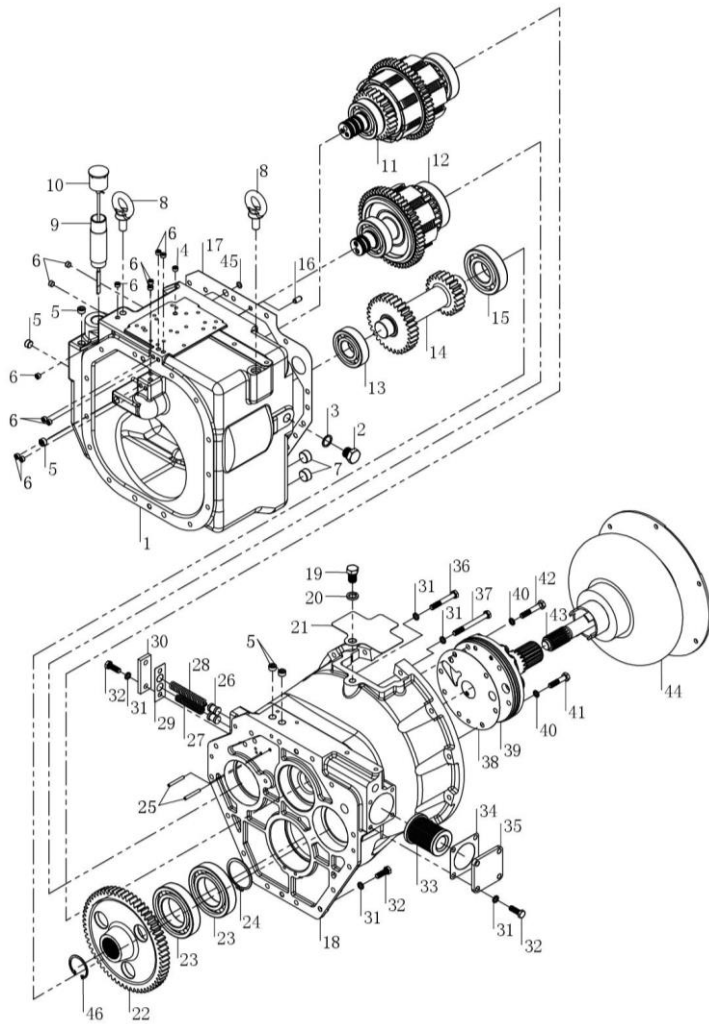


图 8 液力变速箱(其 2) (绍兴) (ShaoXin)
Fig.8 Hydrodynamic gear-box(part-2)

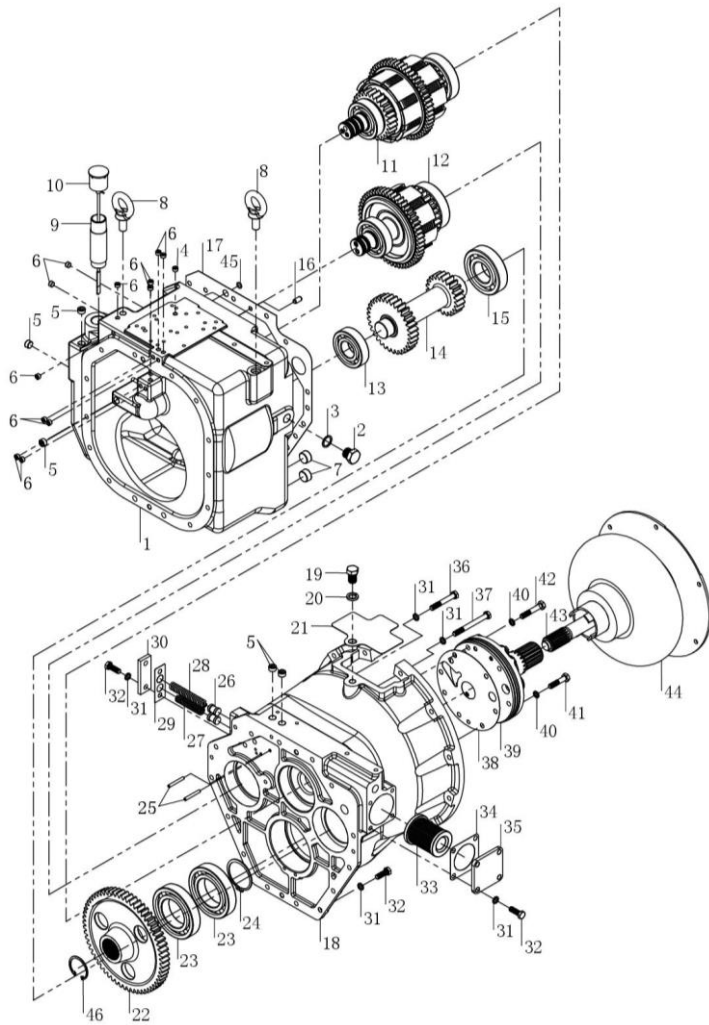
4.0-X5t
液力变速箱 Hydrodynamic gear-box



序号 Item	物料码 Code No.	名称 Description	数量 Qty	备注或适用车型 Remarks or Serial No.	原物料码 Original Part No.
1	81011000347	箱体 Case, gear-box	1		YQX45-0101
2	81011000348	螺塞 Plug screw	1		YQX45-0102
3	81011000349	密封圈 22×28×2 seal ring 22×28×2	1		Q20-03-22x28x2
4	81011000350	阻尼塞 Plug,Damping	1		YQX45-0020
5	81011000351	螺塞 R3/8 Plug screw R3/8	6		YQX100-0025
6	81011000352	螺塞 R1/8 Plug screw R1/8	12		YQX100-0024
7	81011000353	螺塞 R3/4 Plug screw R3/4	2		YQX100-0019
8	81011000354	吊环螺钉 M16×35 lifting bolt M16×35	2		GB825-88-M16x35
9	81011000355	进油管 Oil inlet	1		YQX45-0103
10	81011000356	加油器盖组件 Oiler cover assy	1		YQX30-0400
11	81011000357	双向离合器总成 Double clutch assy	1	见图 11 See Fig.11	XYQX45-1000
12	81011000358	单向离合器总成 One-way clutch	1	见图 12 See Fig.12	XYQX45-5000
13	81011000359	轴承 6308 Bearing 6308	1		GB276-94-6308
14	81011000360	惰轮轴 Idler shaft	1		YQX45-0011
15	81011000361	轴承 6310 Bearing 6310	1		GB276-94-6310

图 8 液力变速箱(其 2) (绍兴) (ShaoXin)
Fig.8 Hydrodynamic gear-box(part-2)

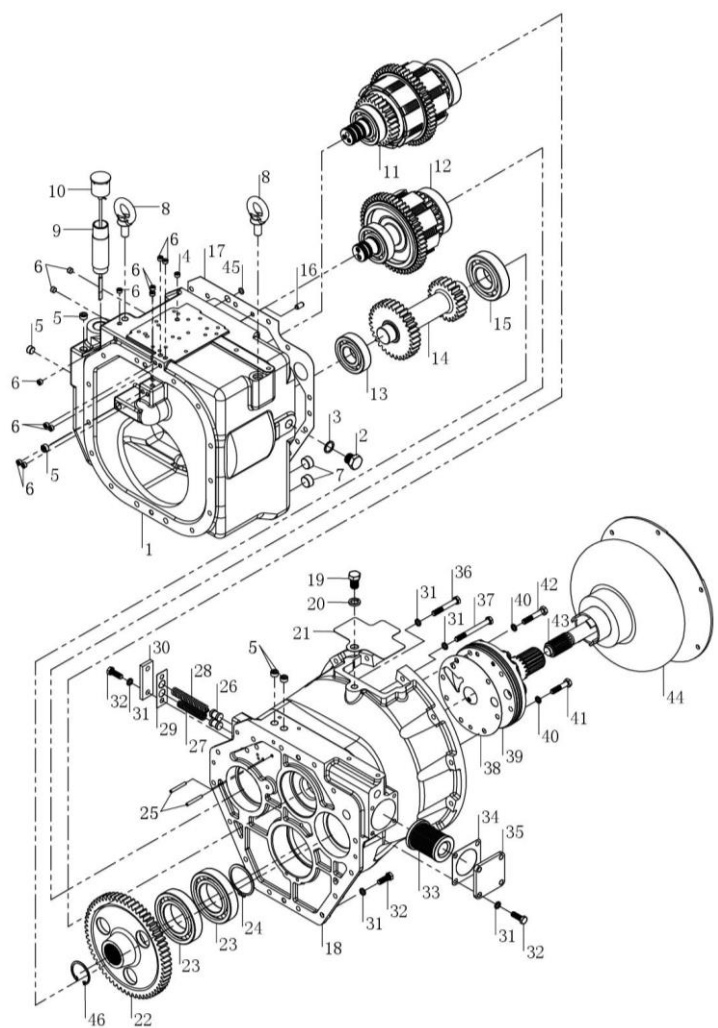
4.0-X5t
液力变速箱 Hydrodynamic gear-box



序号 Item	物料码 Code No.	名称 Description	数量 Qty	备注或适用车型 Remarks or Serial No.	原物料码 Original Part No.
16	810110000328	圆柱销 B10×20 Straight pin B10×20	2		GB119-86-B10x20
17	810110000363	纸垫 Paper washer	1		YQX45-0002
18	810110000364	变矩器壳体 Case, Torque-converter	1	XYQXD	YQX45 II HG-0201
19	810110000365	螺栓 M16×25 Bolt M16×25	1		GB5783-86-M16x25
20	810110000366	弹簧垫圈 16 Spring washer 16	1		GB93-87-16
21	810110000367	盖板 Cover plate	1		YQX45-0202
22	810110000368	输出齿轮 Gear, Output	1		YQX45-0014
23	810110000369	轴承 6214 Bearing 6214	2		GB276-94-6214
24	810110000370	轴用弹性挡圈 70 Circlips For shaft 70	1		GB894.1-86-70
25	810110000371	销子 Pin	2		YQX100-0031
26	810110000372	活塞 Piston	2		YQX100-0026
27	810110000373	弹簧 Spring	1		YQX100-0030
28	810110000374	弹簧 Spring	1		YQX100-0029
29	810110000375	密封垫 Gasket	1		YQX100-0028
30	810110000376	盖 Cover	1		YQX100-0027

图 8 液力变速箱(其 2) (绍兴) (ShaoXin)
Fig.8 Hydrodynamic gear-box(part-2)

4.0-X5t
液力变速箱 Hydrodynamic gear-box



序号 Item	物料码 Code No.	名称 Description	数量 Qty	备注或适用车型 Remarks or Serial No.	原物料码 Original Part No.
31	81011000034	弹簧垫圈 10 Spring washer 10	21		GB93-87-10
32	810110000378	螺栓 M10×1.25×30 Bolt M10×1.25×30	16		GB5786-86-M10×1.25×30
33	810110000379	滤油器 Oil filter	1		YQX45-0500
34	810110000380	纸垫 Paper washer	1		YQX45-0018
35	810110000381	盖板 Cover plate	1		YQX45-0017
36	810110000382	螺栓 M10×1.25×70 Bolt M10×1.25×70	2		GB5785-86-M10×1.25×70
37	810110000383	螺栓 M10×1.25×100 Bolt M10×1.25×100	3		GB5785-86-M10×1.25×100
38	810110000384	纸垫 Paper washer	1		YQX45-0001
39	810110000385	油泵总成 Charging pump,assy	1	见图 13 See Fig.13	YQX45-3000
40	810110000386	组合密封垫 10 Combination gasket 10	7		JB982-77-10
41	810110000387	螺栓 Bolt	5		YQX45-0025
42	810110000389	螺栓 Bolt	2		YQX45-0016
43	810110000390	涡轮轴 Turbine shaft	1		YQX45-0013
44	810110000391	液力变矩器YJH315E-8 Torque-converter	1	XYQXD45A	YQX45 II HG-6000
44	810110000392	液力变矩器YJH315E-10 Torque-converter	1	XYQXD45	YQX45 II HE-6000

图9 控制阀总成(绍兴)
Fig.9 Control valve assy (ShaoXin)

4.0-X5t XYQXD
液力变速箱 Hydrodynamic gear-box
(电磁阀换向) (Solenoid valve Commutation)

序号 Item	物料码 Code No.	名称 Description	数量 Qty	备注或适用车型 Remarks or Serial No.	原物料码 Original Part No.
A1	810110000395	控制阀总成 12V Control valve assy 12V	1	包含/INC:1-37	YQXD45A-4000-HG24
A1	810110000396	控制阀总成 24V Control valve assy 24V	1	包含/INC:1-37	YQXD45A-4000-HG12
A2	810110000397	控制阀 Control valve	1	包含/INC:1-26,28-34	YQXD45A-4100
1	810110000398	阀体 Body, valve	1		YQXD45A-4101
2	810110000399	活塞 Piston	1		YQX100-4023
3	810110000400	弹簧 Spring	1		YQX100-4022
4	810110000401	弹簧 Spring	1		YQX100-4026
5	810110000402	弹簧 Spring	1		YQX100-4024
6	810110000403	圆柱销 B10×80 Straight pin B10×80	1		GB119-86-B10×80
7	810110000404	弹簧 Spring	1		YQX30-5003
8	810110000405	滑阀 Slide valve	1		YQX45-4002
9	810110000406	微动阀杆 Rod, inching valve	1		YQX45A-4004
10	810110000407	弹簧 Spring	1		YQX45-4003
11	810110000408	垫圈 16 Washer 16	1		GB/T97.1-2002-16

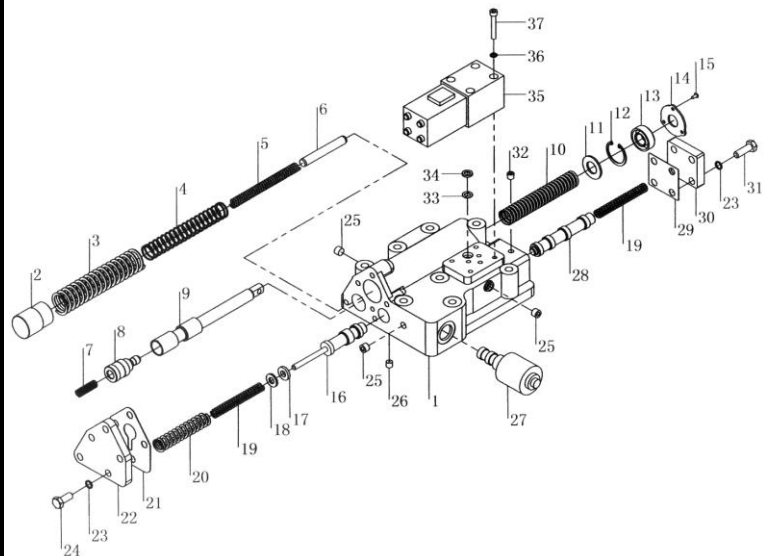
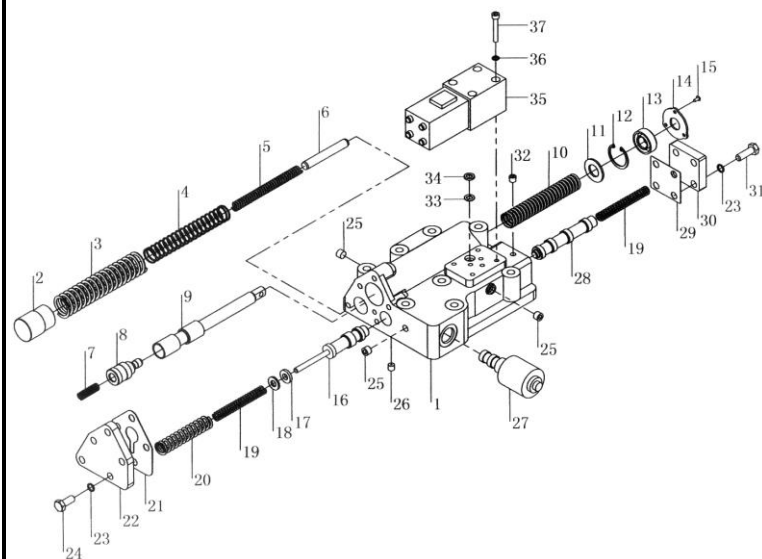


图9 控制阀总成(绍兴)
Fig.9 Control valve assy (ShaoXin)

4.0-X5t
液力变速箱 Hydrodynamic gear-box
(电磁阀换向) (Solenoid valve Commutation)



序号 Item	物料码 Code No.	名称 Description	数量 Qty	备注或适用车型 Remarks or Serial No.	原物料码 Original Part No.
12	810110000409	挡圈 30 Retaining ring 30	1		GB/T893.1-86-30
13	810110000410	油封 14×30×10 Oil seal 14×30×10	1		TRED00140
14	810110000411	压盖 Gland	1		YQX100-4028
15	810110000412	螺钉 M3×8 Screw M3×8	3		GB/T67-2000-M3×8
16	810110000413	微调阀芯 valve core, Reset valve	1		YQX45-4014
17	810110000414	调整垫片 Adjusting shim	1		YQXD45-4115
18	810110000415	垫圈 Washer	按需 need		YQXD45-4114
19	810110000416	弹簧 Spring	2		YQX100-4015
20	810110000417	弹簧 Spring	1		YQX100-4016
21	810110000418	衬垫 I Liner I	1		YQXD45A-4103
22	810110000419	盖 Cover	1		YQXD45A-4102
23	810110000420	垫圈 8 Washer 8	9		GB/T93-87-8
24	810110000421	螺栓 M8×25 Bolt M8×25	5		GB/T5783-86-M8×25
25	810110000422	圆锥螺堵 (ZG1/8") Plug ZG1/8	3		CDB-F15-1.22
26	810110000423	螺堵 Plug	1		YQXD45-4112

图9 控制阀总成(绍兴)
Fig.9 Control valve assy (ShaoXin)

4.0-X5t
液力变速箱 Hydrodynamic gear-box
(电磁阀换向) (Solenoid valve Commutation)

序号 Item	物料码 Code No.	名称 Description	数量 Qty	备注或适用车型 Remarks or Serial No.	原物料码 Original Part No.
27	810110000424	12V 电磁阀 (速度) 12V Solenoid valve, speed	1		YQXD100HA-4300
27	810110000425	24V 电磁阀 (速度) 24V Solenoid valve, speed	1		YQXD100A-4300
28	810110000426	滑阀 slide valve	1		YQXD45-4111
29	810110000427	衬垫 I Liner I	1		YQXD100C-4105
30	810110000428	盖 I Cover I	1		YQXD100C-4104
31	810110000429	螺栓 M8×20 Bolt M8×20	4		GB/T5783-2000-M8×20
32	810110000430	圆锥螺堵 ZG1/16"	1		GB/T7306.2-2000
33	810110000142	O 形圈 12×2.4 O-ring 12×2.4	1		GB1235-76-12×2.4
34	810110000143	滤网 Filter screen	1		YQXD45-4107
35	810110000433	12V 电磁阀 (方向) 12V Solenoid Valve, Direction	1		YQX30D-4200
35	810110000434	24V 电磁阀 (方向) 24V Solenoid Valve, Direction	1		YQXD100-4200

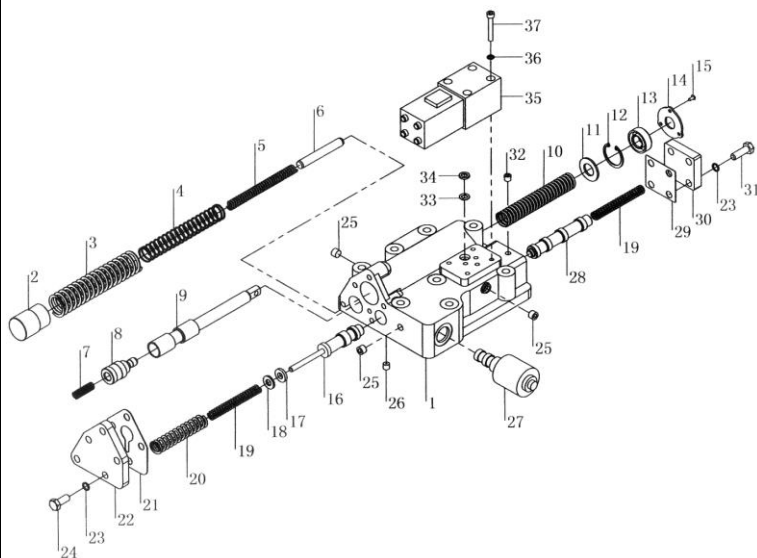
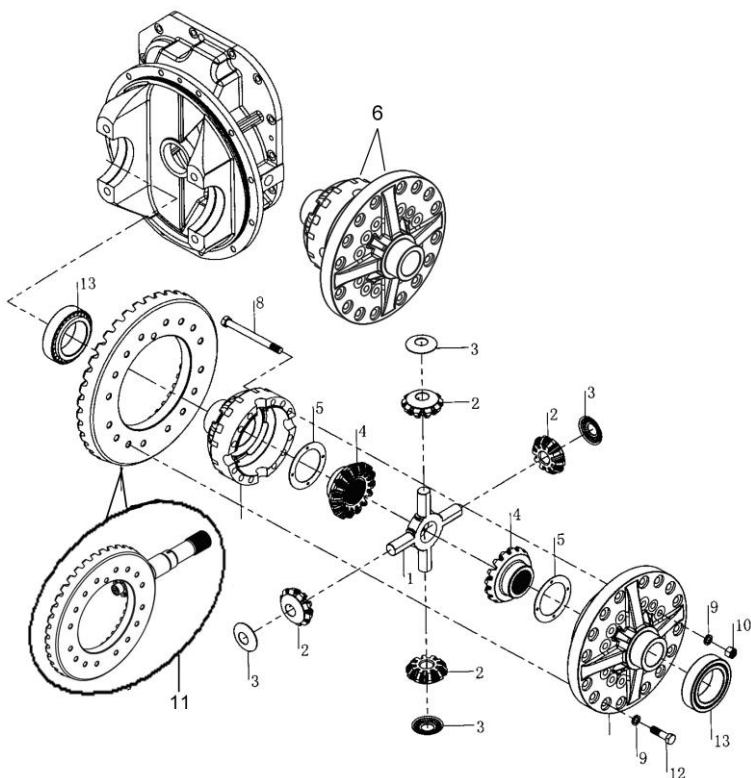


图 10 差速器 (绍兴)
Fig.10 Differential (ShaoXin)

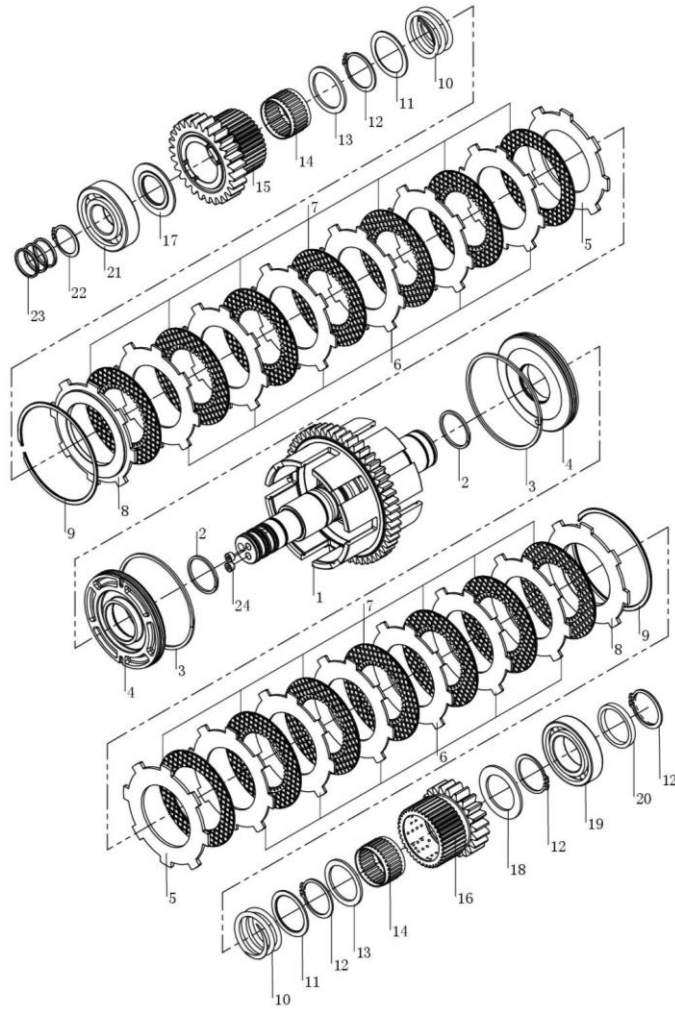
4.0-X5t
液力变速箱 Hydrodynamic gear-box



序号 Item	物料码 Code No.	名称 Description	数量 Qty	备注或适用车型 Remarks or Serial No.	原物料码 Original Part No.
A1	810110000338	差速器总成 Differential mechanism	1	包含/INC:1-13	YQX45-2000
1	810110000438	十字架 Cross	1		YQX45-2005
2	810110000439	行星齿轮 Planetary gear	4		YQX45-2006
3	810110000440	止推垫圈 Thrust washer	4		YQX45-2004
4	810110000441	半轴齿轮 Axle shaft gear	2		YQX45-2001
5	810110000442	垫圈 Washer	2		YQX45-2002
6	810110000443	左右差速器壳组件 Case assy, Differential	1		YQX45-2100
8	810110000444	螺栓 Bolt	12		YQX45-2007
9	810110000313	弹簧垫圈 14 Spring washer 14	28		GB93-87-14
10	810110000446	螺母 M14×1.5 Nut M14×1.5	12		GB6176-86-M14×1.5
11	810110000303	螺旋齿轮组件 Helical gear assy	1		YQX45-0900
12	810110000448	螺栓 M14×1.5×50 Bolt M14×1.5×50	16		GB5785-86- M14×1.5×50
13	810110000449	轴承 33016 Bearing 33016	2		GB297-94-33016

图 11 双向离合器总成(液力式) (绍兴)
Fig.11 Two-way clutch(tor-con type)
(ShaoXin)

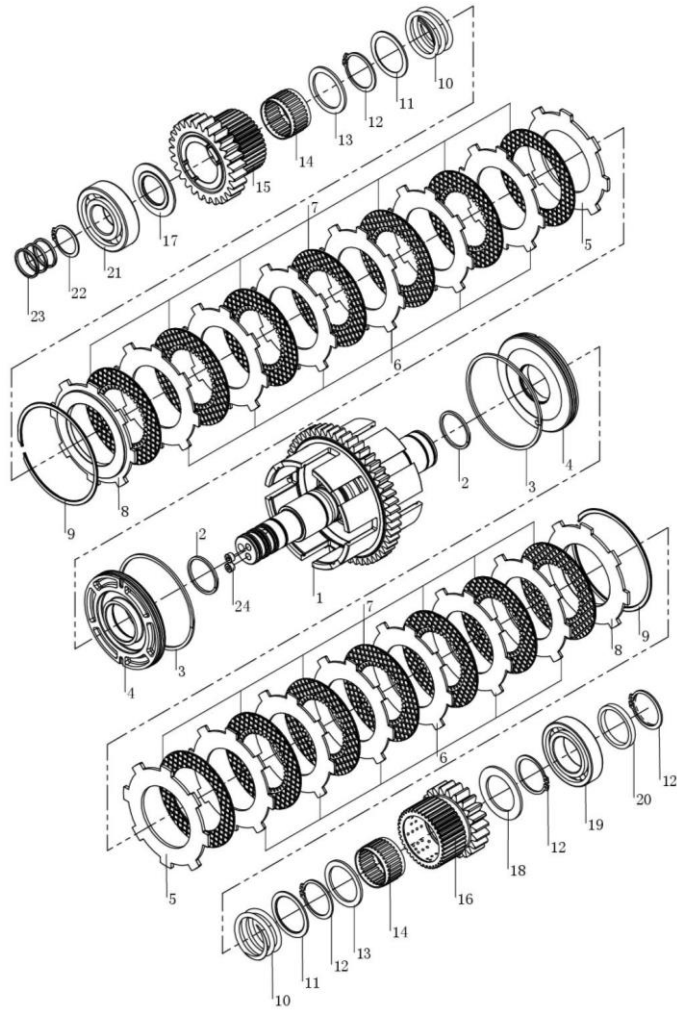
4.0-X5t
液力变速箱 Hydrodynamic gear-box



序号 Item	物料码 Code No.	名称 Description	数量 Qty	备注或适用车型 Remarks or Serial No.	原物料码 Original Part No.
A1	810110000357	双向离合器总成 Double clutch assy	1	包含/INC:1-24	XYQX45-1000
1	810110000451	双向离合器毂组件 Double clutch hub assy	1		YQX45-1100
2	810110000452	密封环 A Seal ring A	2		YQX100-1007
3	810110000453	密封环 B Seal ring B	2		YQX100-1008
4	810110000454	离合器活塞组件 Piston assy, clutch	2		YQX45-1300
5	810110000455	端板 End-plate	2		YQX45-1008
6	810110000456	分离片 Separate pieces	12		YQX100-1006
7	810110000457	内摩擦片 Friction disc, Internal	14		YQX100-1200A
8	810110000458	挡板 Baffle	2		YQX100-1005
9	810110000459	弹性挡圈 Elastic collar	2		YQX100-1004
10	810110000460	弹簧 Spring	2		YQX45-1004
11	810110000461	弹簧座 Spring seat	2		YQX100-1012
12	810110000462	挡圈 50 Retaining ring 50	4		GB894.1-86-50
13	810110000463	止推环 A Thrust collar A	2		YQX100-1013
14	810110000464	滚针轴承 K505735 Bearing,needle	2		GB5846-86-K505735

图 11 双向离合器总成(液力式) (绍兴)
Fig.11 Two-way clutch(tor-con type)
(ShaoXin)

4.0-X5t
液力变速箱 Hydrodynamic gear-box



序号 Item	物料码 Code No.	名称 Description	数量 Qty	备注或适用车型 Remarks or Serial No.	原物料码 Original Part No.
15	810110000465	前进 I 档齿轮 Gear, Forward I file	1		YQX45-1003
16	810110000466	后退档齿轮 Gear, Reverse gears	1		YQX45-1005
17	810110000467	止推垫 Gasket	1		YQX45-1007
18	810110000468	止推环 B Thrust collar B	1		YQX100-1001
19	810110000361	轴承 6310 Bearing 6310	1		GB276-94-6310
20	810110000470	密封圈 seal ring	1		YQX45-1002
21	810110000359	轴承 6308 Bearing 6308	1		GB276-94-6308
22	810110000472	挡圈 40 Retaining ring 40	1		GB894.1-86-40
23	810110000473	密封环 C Seal ring C	3		YQX100-1017
24	810110000352	螺塞 R1/8 Plug screw R1/8	2		YQX100-0024

图 12 单向离合器总成(液力式) (绍兴)
Fig.12 One-way clutch(tor-con type)
(ShaoXin)

4.0-X5t
液力变速箱 Hydrodynamic gear-box

序号 Item	物料码 Code No.	名称 Description	数量 Qty	备注或适用车型 Remarks or Serial No.	原物料码 Original Part No.
A1	810110000358	单向离合器总成 One-way clutch	1	包含/INC:1-22	XYQX45-5000
1	810110000476	单向离合器毂组件 One-way clutch	1		YQX45-5100
2	810110000452	密封环 A Seal ring A	1		YQX100-1007
3	810110000453	密封环 B Seal ring B	1		YQX100-1008
4	810110000454	离合器活塞组件 Piston assy, clutch	1		YQX45-1300
5	810110000455	端板 End-plate	1		YQX45-1008
6	810110000456	分离片 Separate pieces	6		YQX100-1006
7	810110000457	内摩擦片 Friction disc, Internal	7		YQX100-1200A
8	810110000458	挡板 Baffle	1		YQX100-1005
9	810110000459	弹性挡圈 Elastic collar	1		YQX100-1004
10	810110000460	弹簧 Spring	1		YQX45-1004
11	810110000461	弹簧座 Spring seat	1		YQX100-1012
12	810110000462	挡圈 50 Retaining ring 50	2		GB894.1-86-50
13	810110000463	止推环 A Thrust collar A	1		YQX100-1013
14	810110000464	滚针轴承 K505735 Bearing,needle	1		GB5846-86-K505735

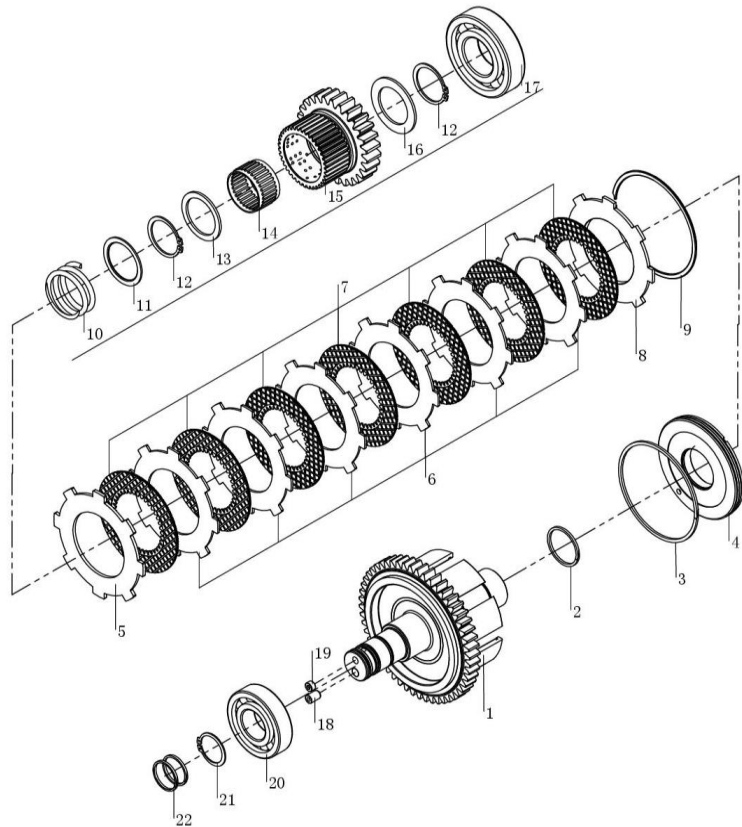
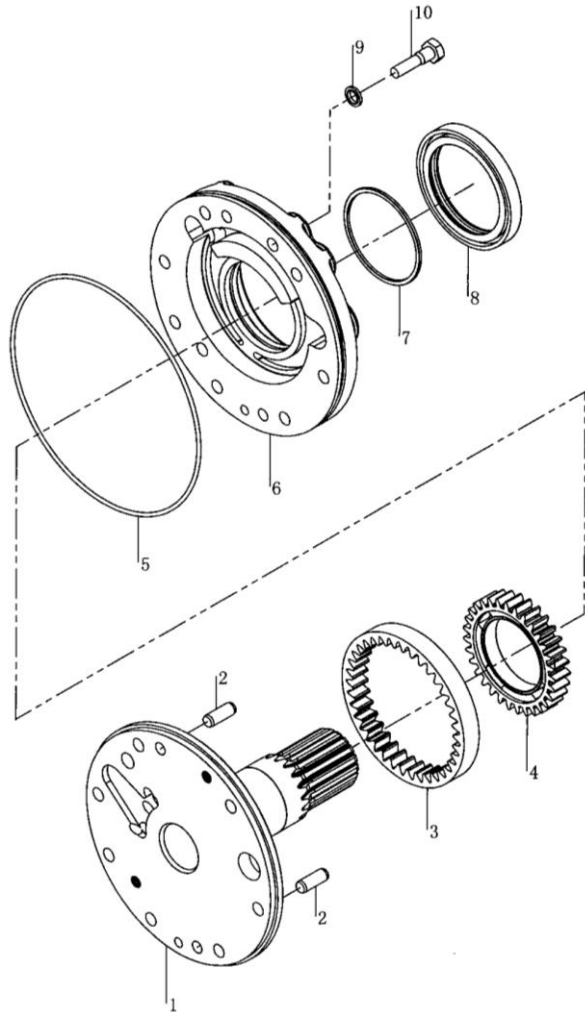


图 13 油泵总成 (绍兴)
Fig.13 Charging pump (ShaoXin)

4.0-X5t
液力变速箱 Hydrodynamic gear-box



序号 Item	物料码 Part No.	名称 Description	数量 Qty	备注或适用车型 Remarks or Serial No.	原物料码 Original Part No.
A1	810110000385	油泵总成 Charging pump	1	包含/INC:1-10	YQX45-3000
1	810110000499	定子 Stator	1		YQX45-3002
2	810110000500	圆柱销 B10×26 Pin, Parallel B8×26	2		GB119-86-B10x26
3	810110000501	被动齿轮 Gear,Driven	1		YQX45-3001
4	810110000502	主动齿轮组件 Gear,Drive	1		YQX45-3100
5	810110000503	O形密封圈 O-ring	1		YQX45-3004
6	810110000504	泵壳 Case,Pump	1		YQX45-3003
7	810110000505	密封圈 Gasket	1		YQX45-3006
8	810110000506	密封圈(F)B75×100×10 Gasket	1		GB9877.1-88-B75x100x10
9	810110000386	组合密封圈 10 Gasket 10	2		JB982-77-10
10	810110000508	螺栓 Bolt	2		YQX45-3005

图 14 变速器(机械式 其 1) 绍兴 ShaoXin
Fig.14 Transmission(clutch type part-1)

4.0-X5t
机械变速箱 Mechanical gear-box

序号 Item	物料码 Part No.	名称 Description	数量 Qty	备注或适用车型 Remarks or Serial No.	原物料码 Original Part No.
1	810110000509	变速箱 Transmission	1		HC450-04-001
2	810110000510	垫片 Gasket	2		H400-121403-000A
3	810110000511	滚针轴 K304230 Bearing, needle	2		GB/T5846-86-K304230
4	810110000512	惰齿轮轴承隔圈 Spacer	1		H450-06-001
5	810110000513	惰齿轮 Gear	1		H450-06-002
6	810110000514	倒档齿轮轴 Shaft	1		H450-06-003
7	810110000515	O 形密封圈 23.6×3.55 O-ring	1		GB3452.1-92-23.6×3.55
8	810110000516	挡板 Plate	1		H400-121009-000
9	810110000517	弹簧垫圈 10 Washer	24		GB/T93-87-10
10	810110000518	螺栓 M10×25 Bolt	1		GB/T5783-2000- M10×25
11	810110000519	中间轴 (一) 部件 Middle shaft	1		HC450-02-000
12	810110000520	中间轴 (一) 后端盖纸垫 Paper washer	1		H450-04-005
13	810110000521	中间轴 (一) 后端盖 Cover	1		H450-04-006
14	810110000522	螺栓 M10×30 Bolt	22		GB/T5783-2000-M10×30
15	810110000523	中间轴 (二) Shaft	1		H450-03-002

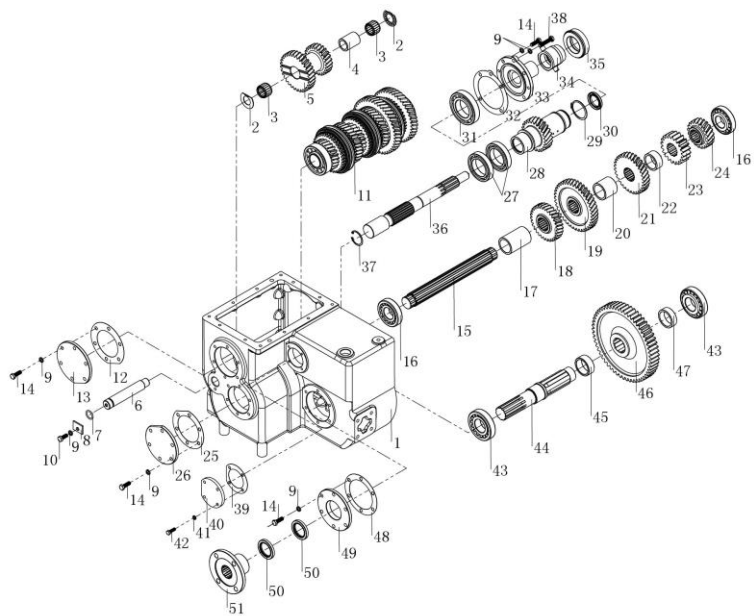
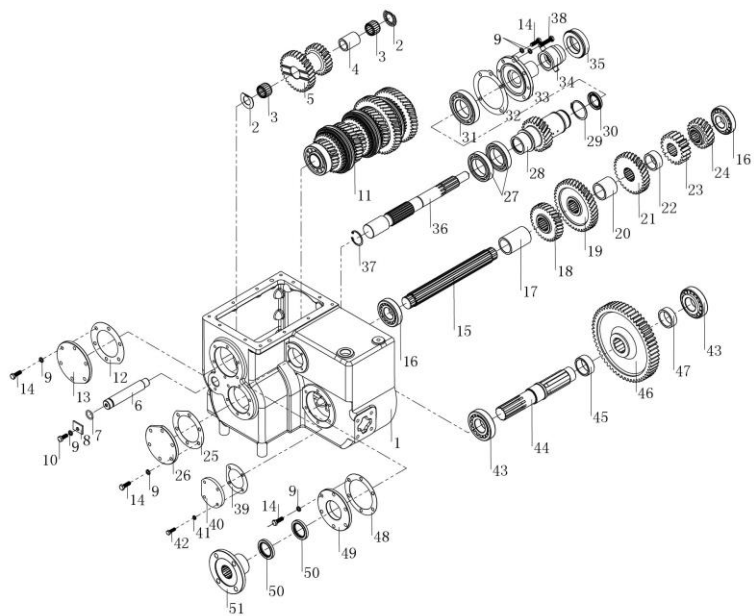


图 14 变速器(机械式 其 1) 绍兴 ShaoXin
Fig.14 Transmission(clutch type part-1)

4.0-X5t
机械变速箱 Mechanical gear-box



序号 Item	物料码 Part No.	名称 Description	数量 Qty	备注或适用车型 Remarks or Serial No.	原物料码 Original Part No.
16	810110000524	轴承 30308 Bearing	2		GB/T297-94-30308
17	810110000525	隔圈 (二) Spacer	1		H450-03-001
18	810110000526	后退档从动齿轮 Gear	1		H450-03-003
19	810110000527	前进 I 档从动齿轮 Gear	1		H450-03-004
20	810110000528	隔圈 Spacer	1		H450-03-005
21	810110000529	前进 II 档从动齿轮 Gear	1		H450-03-006
22	810110000530	隔圈 (一) Spacer	1		H450-03-007
23	810110000531	输出小齿轮 Gear ring spring	1		H400-121104-000
24	810110000532	前进 III 档从动齿轮 Gear	1		HC450-03-001
25	810110000533	中间轴 (二) 后端盖纸垫 Paper washer	1		H450-04-003
26	810110000534	中间轴 (二) 后端盖 Cover	1		H450-04-004
27	810110000535	轴承 6012 Bearing	2		GB/T276-94-6012
28	810110000536	输入齿轮 Gear	1		H450-01-003
29	810110000537	轴用弹性挡圈 60 Snap ring	1		GB/T894.1-86-60
30	810110000538	油封 38×58×8 Oil seal	1		GB/T1387.1-2007-38×58×8

图 14 变速器(机械式 其 1) 绍兴 ShaoXin
Fig.14 Transmission(clutch type part-1)

4.0-X5t
机械变速箱 Mechanical gear-box

序号 Item	物料码 Part No.	名称 Description	数量 Qty	备注或适用车型 Remarks or Serial No.	原物料码 Original Part No.
31	810110000539	轴承 NUP212E Bearing	1		GB/T283-94-NUP212E
32	810110000540	输入轴承座纸垫 Paper washer	1		HC450-04-005
33	810110000541	输入轴承座 Cap,bearing	1		HC450-01-002
34	810110000542	分离轴承座 Cap,bearing	1		HC450-04-004
35	810110000543	分离轴承 TZ5522 Bearing	1		JB/T5312-2001
36	810110000544	输入轴 Shaft	1		HC450-01-001
37	810110000545	孔用弹性挡圈 45 Snap ring	1		GB/T893.1-86-45
38	810110000546	螺栓 M10×50 Bolt	1		GB/T5783-2000-M10x50
39	810110000547	输入轴后端盖纸垫 Paper washer	1		H450-04-007
40	810110000548	输入轴后端盖 Cover	1		H450-04-009
41	810110000420	弹簧垫圈 8 Washer	4		GB/T93-87-8
42	810110000550	螺栓 M8×25 Bolt	4		GB/T5783-2000-M8x25
43	810110000551	轴承 30309 Bearing	2		GB/T297-94-30309
44	810110000552	输出轴 Shaft,output	1		HC450-05-001
45	810110000553	输出轴隔圈 (一) Spacer	1		H450-05-002

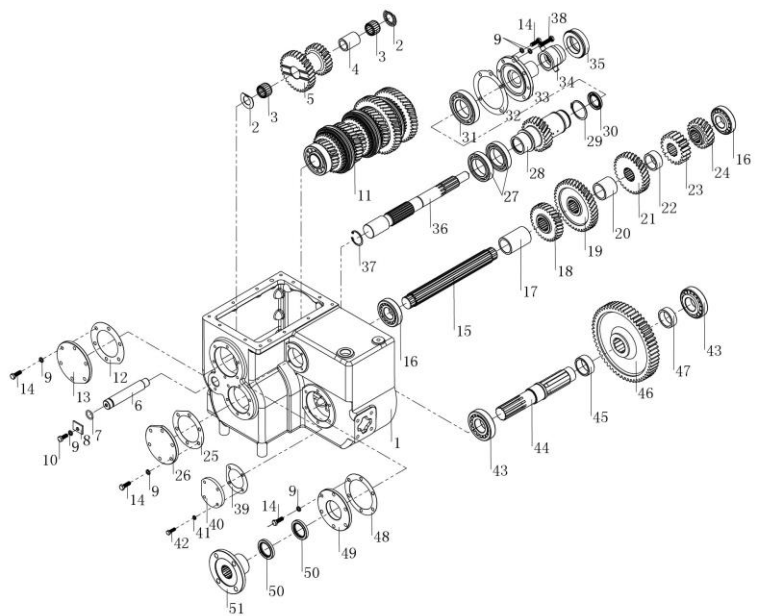


图 15 变速器(机械式 其 2) 绍兴 ShaoXin
Fig.15 Transmission(clutch type part-2)

4.0-X5t
机械变速箱 Mechanical gear-box

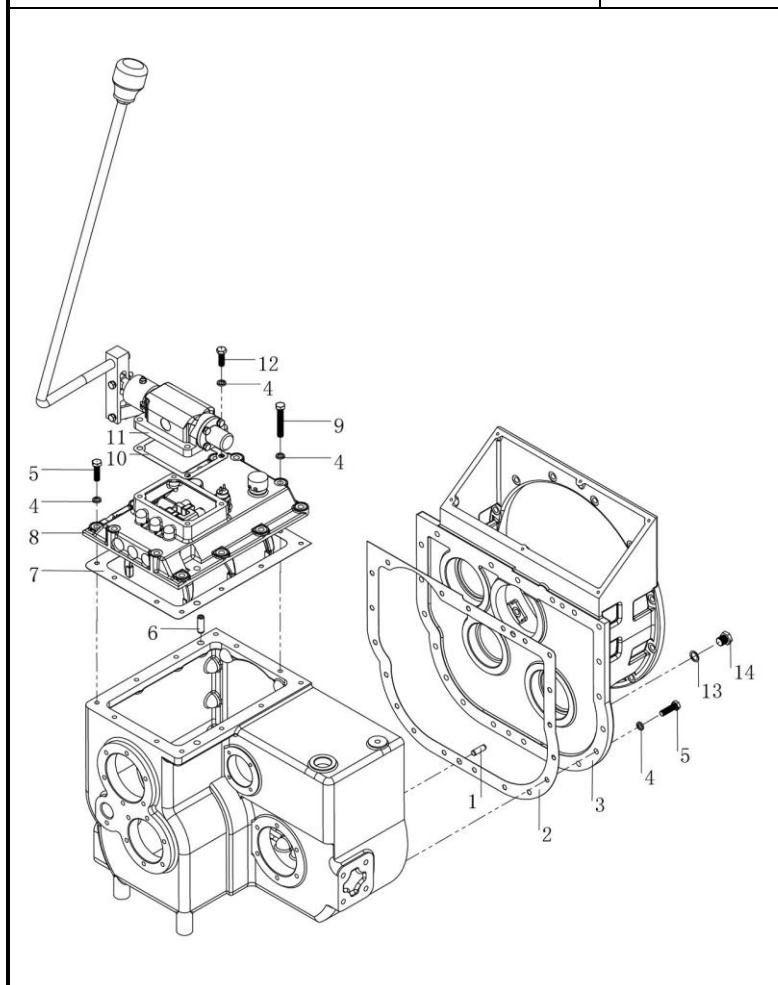
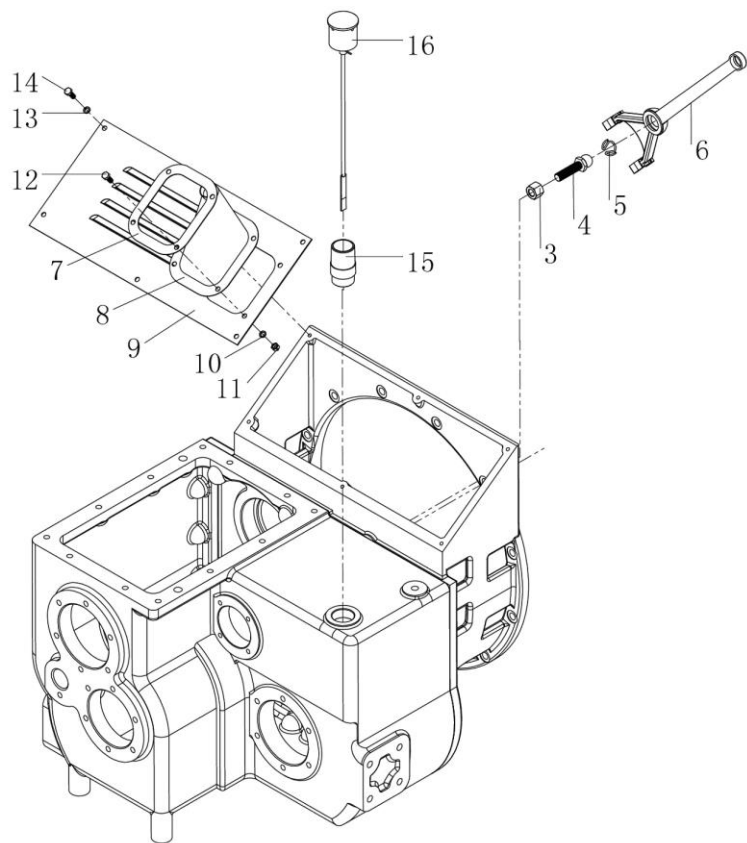
	序号 Item	物料码 Part No.	名称 Description	数量 Qty	备注或适用车型 Remarks or Serial No.	原物料码 Original Part No.
	1	810110000560	圆柱销 10×30 Pin	2		GB/T119-2000-10×30
	2	810110000561	箱体纸垫 Paper washer	1		HC450-04-002
	3	810110000562	离合器外壳 Clutch cover	1		HC450-04-003
	4	810110000517	弹簧垫圈 10 Washer	35		GB/T93-87-10
	5	810110000564	螺栓 M10×35 Bolt	27		GB/T5783-2000-M10×35
	6	810110000565	圆柱销 12×35 Pin	2		GB/T120-2000-12×35
	7	810110000566	上箱盖纸垫 Paper washer	1		H450-04-012
	8	810110000567	变速箱上盖组件 Cover assy	1		H450-07-000
	9	810110000568	螺栓 M10×65 Bolt	4		GB/T5783-2000-M10×65
	10	201400030002	纸垫 Paper washer	1		H400-120002-000
	11	810110000570	换挡器组件 Shift unit assy	1		HC450-08-000
	12	810110000522	螺栓 M10×30 Bolt	4		GB/T5783-2000-M10×30
	13	810110000572	铜垫片 16 Gasket 16	1		Q20-03-16
	14	810110000573	放油螺塞 M16×1.5 Bolt	1		Q20-01-M16×1.5

图 16 变速器(机械式 其 3) 绍兴 ShaoXin
Fig.16 Transmission(clutch type part-3)

4.0-X5t
机械变速箱 Mechanical gear-box



序号 Item	物料码 Part No.	名称 Description	数量 Qty	备注或适用车型 Remarks or Serial No.	原物料码 Original Part No.
3	810110000575	调整螺母 Nut	1		JDS30 II -0011
4	810110000576	分离叉球形支柱 Ball-ended supporting stud,clutch release fork	1		HC450-04-007
5	810110000577	弹性挡圈 Snap ring	1		JDS30 II -0009
6	810110000578	分离拨叉 Release fork	1		HC450-04-006
7	810110000579	防尘罩盖板 Plate	1		HC450-04-103
8	810110000580	防尘罩 Dustproof hood	1		HC450-04-102
9	810110000581	离合器外壳护罩 Clutch cover	1		HC450-04-101
10	810110000585	弹簧垫圈 6 Washer	4		GB/T93-87-6
11	810110000583	螺母 M6 Nut	4		GB/T6170-2000-M6
12	810110000584	螺栓 M6×16 Bolt	4		GB/T5783-2000-M6×16
13	810110000585	弹簧垫圈 6 Washer	6		GB/T93-87-6
14	810110000584	螺栓 M6×16 Bolt	6		GB/T5783-2000-M6×16
15	810110000587	加油管 Pipe oil fill	1		JDS45S-04-009

图 17 变速器(机械式 其 4) 绍兴 ShaoXin
Fig.17 Transmission(clutch type part-4)

4.0-X5t
机械变速箱 Mechanical gear-box

序号 Item	物料码 Part No.	名称 Description	数量 Qty	备注或适用车型 Remarks or Serial No.	原物料码 Original Part No.
1	810110000589	中间轴 (一) Middle shaft	1		H450-02-009
2	810110000590	一档、二档同步锥 Synchronous cone	2		H400-121140-007
3	810110000591	一、二、三、四档同步环 Ring block	5		H400-121140-006
4	810110000592	一二档固定齿座 Gear seat	1		H400-121140-008
5	810110000593	一二档同步器止动块 Blok stop	6		H400-121140-005
6	810110000594	锁销弹簧 1 Spring	9		H400-121140-003
7	810110000595	锁销弹簧 2 Spring	9		H400-121140-002
8	810110000596	同步器锁销 Pin	9		H400-121140-004
9	810110000597	三四档滑动齿套 Sliding dag clutch	3		H400-121130-001
10	810110000598	轴用弹性挡圈 65 Snap ring	1		GB/T894.1-86-65
11	810110000599	前进 I 档齿轮 Gear, F1	1		H450-02-004
12	810110000600	滚针轴承 K546235 Bearing, needle	5		GB5846-86-K546235
13	810110000601	止推卡环 Ring	2		H400-121110-000
14	810110000602	套环 Ring	1		H400-121111-000
15	810110000603	后退 II 档齿轮 Gear, forward	1		H450-02-003

图 17 变速器(机械式 其 4) 绍兴 ShaoXin
Fig.17 Transmission(clutch type part-4)

4.0-X5t
机械变速箱 Mechanical gear-box

序号 Item	物料码 Part No.	名称 Description	数量 Qty	备注或适用车型 Remarks or Serial No.	原物料码 Original Part No.
16	810110000589	三、四档同步锥 Synchronous cone	3		H450-02-009
17	810110000590	三四档固定齿座 Gear seat	2		H400-121140-007
18	810110000591	挡圈 Snap ring	2		H400-121140-006
19	810110000592	挡圈 Snap ring	1		H400-121140-008
20	810110000593	后退 I 档齿轮 Gear, forward	1		H400-121140-005
21	810110000594	衬套 Spacer	2		H400-121140-003
22	810110000595	轴承 6309 Bearing	2		H400-121140-002
23	810110000596	前进 II 档齿轮 Gear	1		H400-121140-004
24	810110000597	输入从动齿轮 Gear	1		H400-121130-001
25	810110000598	挡圈 Snap ring	1		GB/T894.1-86-65
26	810110000599	三四档同步器止动块 Blok stop	3		H450-02-004
27	810110000600	前进 III 档齿轮 Gear	1		GB5846-86-K546235

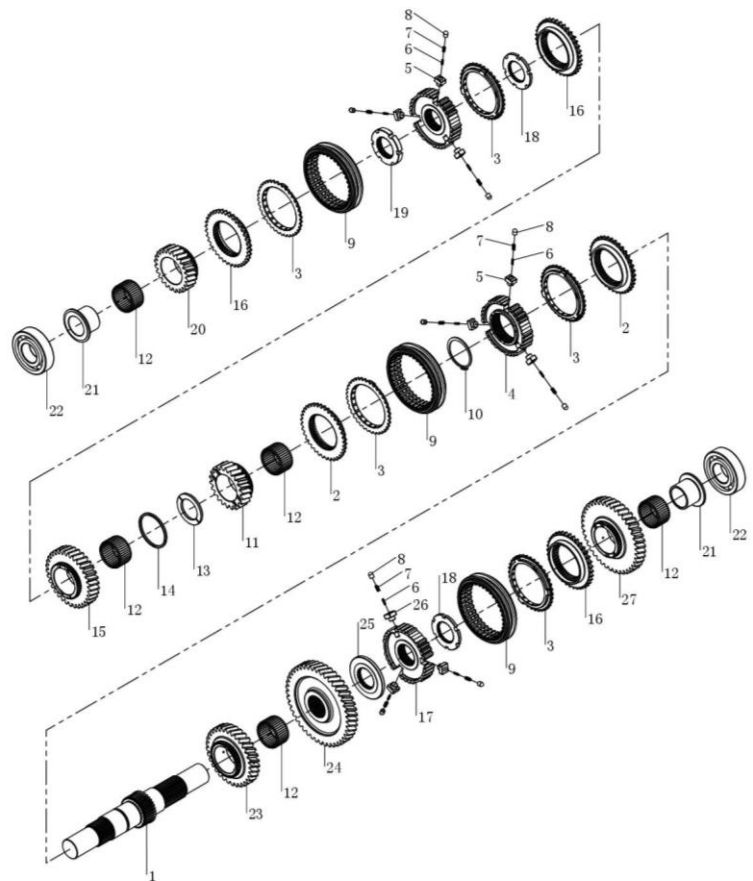


图 18 变速器(机械式 其 5) 绍兴 ShaoXin
Fig.18 Transmission(clutch type part-5)

4.0-X5t
机械变速箱 Mechanical gear-box

序号 Item	物料码 Part No.	名称 Description	数量 Qty	备注或适用车型 Remarks or Serial No.	原物料码 Original Part No.
1	810110000616	变速箱上盖 Tank cover assy	1	包含/INC:1-17	H450-07-001
2	810110000617	前进 II、III档拨叉 fork	1		H400-122002-000
3	810110000618	定位弹簧 Spring	3		H400-122010-000
4	810110000619	钢球Φ11 Ball, steel	3		GB/T6170-89-Φ11
5	810110000620	倒档拨叉轴 Shaft	1		H450-07-004
6	810110000621	拨叉锁紧螺钉 Screw	4		H400-122006-000
7	810110000622	钢球Φ10 Ball, steel	6		GB/T6170-89-Φ10
8	810110000623	前 I 倒 II 档拨叉 fork	1		H400-122003-000
9	810110000624	拨叉轴 Shaft	1		H400-122007-000
10	810110000625	互锁销 pin	2		H400-122005-000
11	810110000626	前进 III 档拨叉 fork	1		H450-07-002
12	810110000627	倒一档拨叉轴拨块 Dial block, Fork shaft	1		H400-122004-000
13	810110000628	三档拨叉轴 Shaft	1		H450-07-003
14	810110000629	空档位开关 shift switch	1		SXQJC-BG
15	810110000630	塞片 26 Plate	3		Q27126

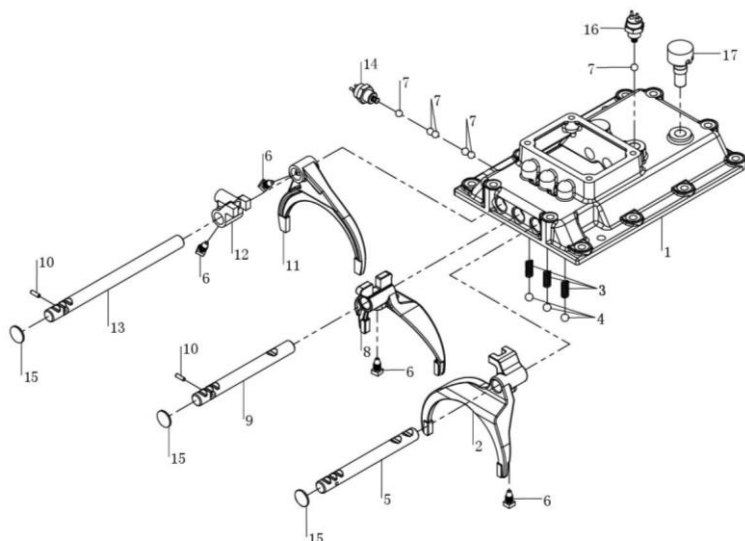
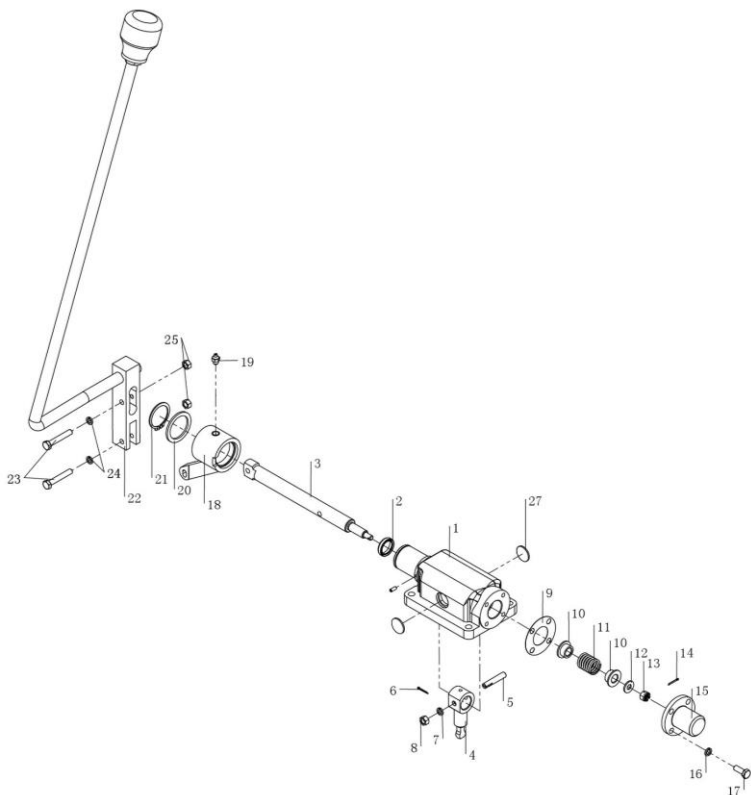


图 19 变速器(机械式 其 6) 绍兴 ShaoXin
Fig.19 Transmission(clutch type part-6)

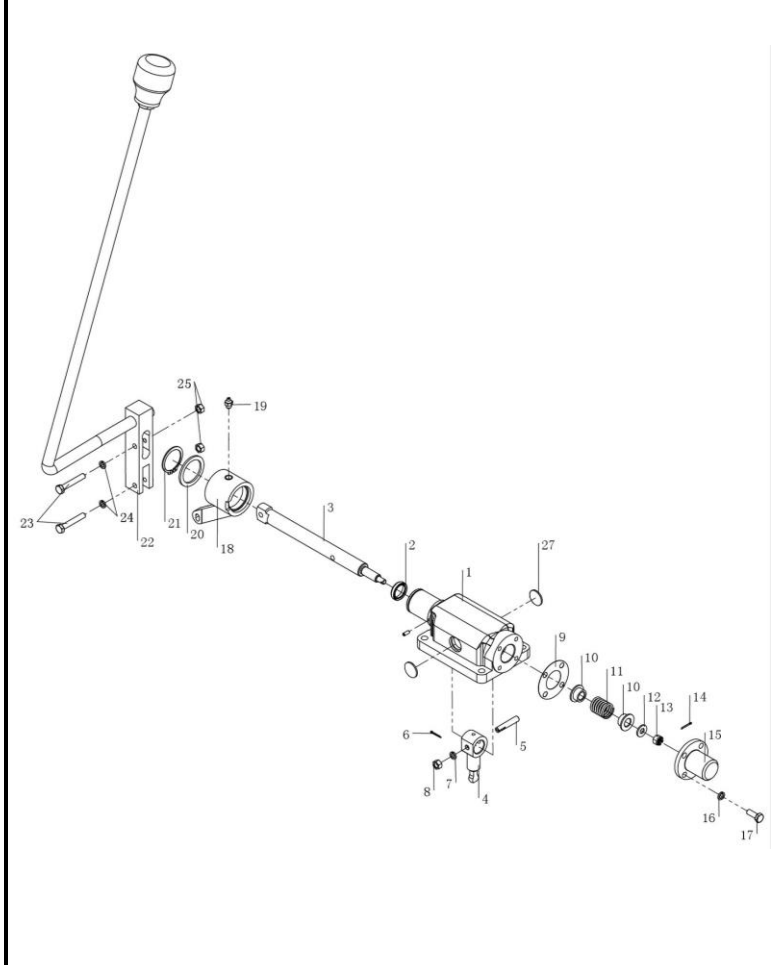
4.0-X5t
机械变速箱 Mechanical gear-box



序号 Item	物料码 Part No.	名称 Description	数量 Qty	备注或适用车型 Remarks or Serial No.	原物料码 Original Part No.
1	810110000633	支架 Bracket	1		HC450-08-001
2	810110000634	旋转唇形密封圈 22×30×7 ring	1		GB/T1387.1-92-22×30×7
3	810110000635	轴 Shaft	1		HC450-08-002
4	810110000636	换挡器拨叉 Yoke	1		HC450-08-101
5	810110000637	开尾圆柱销 pin	1		H400-123015-000
6	810110000638	开口销Φ2×16 pin	1		GB/T91-2000-Φ2×16
7	810110000639	弹性垫片 8 Washer	1		GB/T97-87-8-8
8	810110000640	螺母 M8 Nut	1		GB/T6170-2000-M8
9	810110000641	盖纸垫 Gasket	1		H400-123014-000
10	810110000642	挡圈 Snap ring	2		H400-123013-000
11	810110000643	弹簧 Spring	1		H400-123012-000
12	810110000644	垫片 Gasket	1		H400-123009-000
13	810110000645	开槽螺母 M8 Nut	1		GB/T6178-86-M8
14	810110000646	开口销Φ2×16 pin	1		GB/T91-86-Φ2×16
15	201200120018	盖 Cover	1		H400-123004-000

图 19 变速器(机械式 其 6) 绍兴 ShaoXin
Fig.19 Transmission(clutch type part-6)

4.0-X5t
机械变速箱 Mechanical gear-box

	序号 Item	物料码 Part No.	名称 Description	数量 Qty	备注或适用车型 Remarks or Serial No.	原物料码 Original Part No.
	16	810110000420	弹性垫片 8 Washer	4		GB/T93-87-8
	17	810110000649	螺栓 M8×20 Bolt	4		GB/T5783-86-M8x20
	18	810110000650	套 Bushing	1		HC4508-003
	19	810110000651	油嘴 Z1/8 Nozzle Z1/8	1		GB/T1152-89-1/8
	20	810110000652	垫片 Gasket	1		H400-123008-000
	21	810110000653	轴用弹性挡圈 40 Snap ring	1		GB/T894.1-86-40
	22	810110000654	换挡手柄总成 Shifting handle assy	1		HC450-08-200
	23	810110000655	螺栓 M8×50 Bolt	2		GB/T5783-2000-M8x50
	24	810110000420	弹性垫片 8 Washer	2		GB/T93-87-8
	25	810110000640	螺母 M8 Nut	1		GB/T6170-2000-M8

