



XF Series

PARTS CATALOG

1t~1.8t XF 系列内燃平衡重式叉车

1t~1.8t XF Series Internal Combustion Counterbalanced Forklift Truck

门架零件目录

MAST PARTS CATALOG

杭叉集团股份有限公司
HANGCHA GROUP CO., LTD.

09/2013



杭叉集团股份有限公司
HANGCHA GROUP CO., LTD.

全国客服热线：400-884-7888

- 地址：中国浙江临安经济开发区东环路 88 号
- 电话：0571-88926666（总机号）85191117
- 传真：0571-85131772 ■ 邮编：311305
- 网站：<http://www.zjhc.cn> ■ 电子邮件：sales@zjhc.cn

■ Address For: OVERSEAS USERS

- Address: 88 Donghuan Road, Lin'an Economic Development Zone, Zhejiang, China
- Fax: 0086-571-88926789 0086-571-88132890 ■ ZIP:311305
- Web: <http://www.hcforlift.com> ■ E-mail: sales@hcforlift.com

说 明

1、本“零件目录”汇集了 1t—1.8t XF 系列各种叉车的 2 级宽视野门架、2 级全自由门架、3 级全自由门架零部件。

2、查询方法:

①用户可根据叉车的额定载荷、门架的型式查找所需的零部件的序号, 根据序号可查得相应的图号或标准号。

②在目录的右上角表示此总成所适用的额定载荷、门架的型式,不通用零件在备注中说明,此外不同起升高度所对应的零件请在附表中区别查询。

3、订购零件时, 须写明所用叉车的型号,出厂编号, 门架高度,所需零部件物料码、名称及订购数量。

4、维修更换零部件时, 为确保质量,请使用本厂零部件。

5、为提高质量, 本厂将对某些零部件进行改进,对改进部分在本目录中不能同时一一修改, 请用户谅解,欲了解详细情况可与本集团销售公司及配件分公司联系。

INFORMATION

I .This catalogue collects all the parts (components) in series of 1-1.8 ton XF fork lift trucks, such as SIMPLEX, DUPLEX and TRIPLEX .

II .Looking up methods:

I) Users can lookup the part (component) series number according to the truck's rated load and mast types, and then you can find the drawing codes and standards of the part (the component) in terms of the series number.

II) On the top right corner, there is an expression of rated load and mast types which are applicable for this assy. Furthermore ,please lookup the parts(components)which used for different lift height distinctively in the Schedule.

III. When you order the parts (components), the truck's Model, factory number ,mast height, code Number of drawing, name and quantity should be given when ordering the parts or the components.

IV. It is recommended to use the parts and components made by us for ideal the service and maintenance.

V . We reserve the right of the change of the truck in construction for improving our products without notice. For the details of changes, please consult with sales department of Hangzhou Forklift Truck Co., Ltd.

缩写及代码:	Abbreviations and codes:
<p>A1,A2,A3 总成序号</p> <p>Assy 总成或组件</p> <p>INC 包含</p> <p>非内置式 不带侧移或带外挂式侧移的门架</p> <p>内置式 内置式侧移门架</p> <p>B 变速箱 冈村变速箱</p> <p>F 变速箱 国产变速箱</p> <p>MS 变速箱 韩国变速箱</p>	<p>A1,A2,A3 Item,Assy</p> <p>Assy Assembly</p> <p>INC Including</p> <p>Non-built-in Without Side shifter or with Hanging outside Side shifter for Mast</p> <p>Built-in With Built-in Side shifter for Mast</p> <p>B transmission Okamura transmission</p> <p>F transmission Chinese transmission</p> <p>MS transmission Korea transmission</p>

序号 Item	名称 Description	适用车型 Serial NO.	页码 Page
图 I Fig. I	货叉总成 Fork assy	2 级宽视野门架 2 级全自由门架 3 级全自由门架 SIMPLEX MAST DUPLEX MAST TRIPLEX MAST	1
图 1 Fig.1	起升组件 Lifting part	2 级宽视野门架 SIMPLEX MAST	2
图 2 Fig.2	链条总成 Chain assy	2 级宽视野门架 SIMPLEX MAST	5
	选配表 1 <Optional Parts List 1>	2 级宽视野门架 SIMPLEX MAST	6
图 3 Fig.3	门架 Mast	2 级宽视野门架 SIMPLEX MAST	7
	选配表 2 <Optional Parts List 2>	2 级宽视野门架 SIMPLEX MAST	8
图 4 Fig.4	货叉架总成 Fork shelf assy	2 级宽视野门架 SIMPLEX MAST	9
图 5 Fig.5	侧移架总成 Side shifter assy	2 级宽视野门架 SIMPLEX MAST	10
图 6 Fig.6	侧移油缸 Side shifter cylinder	2 级宽视野门架 2 级全自由门架 3 级全自由门架 SIMPLEX MAST DUPLEX MAST TRIPLEX MAST	12
图 7 Fig.7	右升降油缸/Lift cylinder,Right 左升降油缸/Lift cylinder,Left	2 级宽视野门架 SIMPLEX MAST	13
	选配表 3 <Optional Parts List 3>	2 级宽视野门架 SIMPLEX MAST	15
图 8 Fig.8	倾斜油缸 Tilt cylinder	2 级宽视野门架 2 级全自由门架 SIMPLEX MAST DUPLEX MAST	16
	选配表 4 <Optional Parts List 4>	2 级宽视野门架 2 级全自由门架 SIMPLEX MAST DUPLEX MAST	18
图 9 Fig.9	油路系统 Mast piping	2 级宽视野门架 SIMPLEX MAST	19
	选配表 5 <Optional Parts List 5>	2 级宽视野门架 SIMPLEX MAST	21

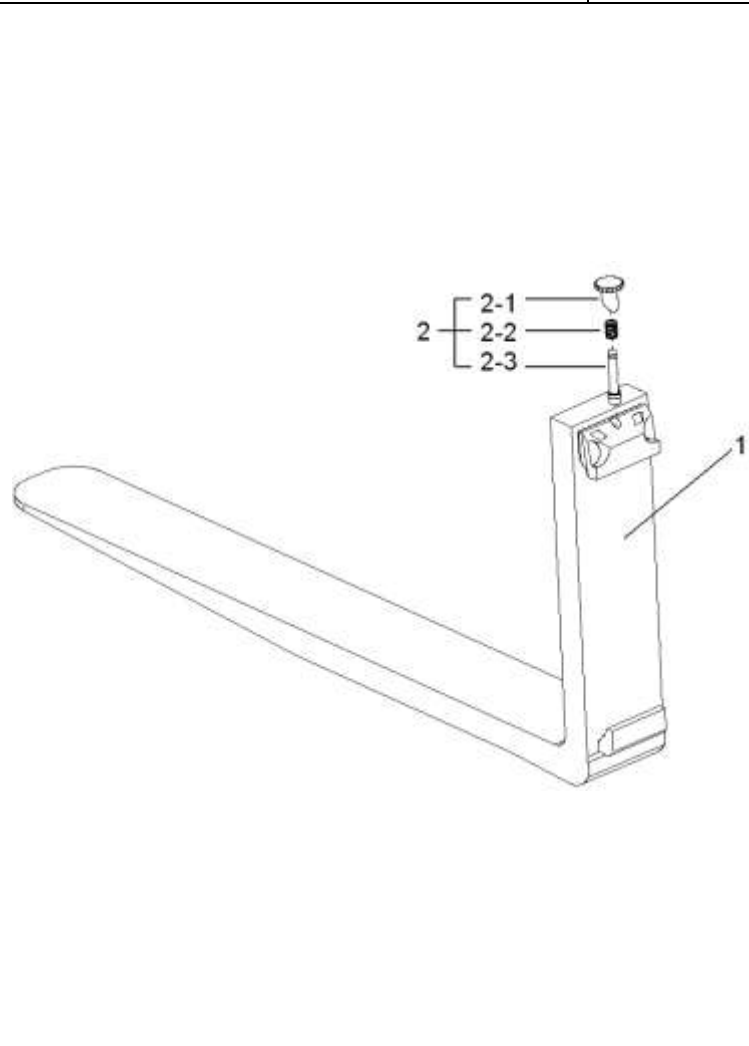
序号 Item	名称 Description	适用车型 Serial NO.	页码 Page
图 10 Fig.10	侧移油路 lateral moving circuit	2 级宽视野门架 SIMPLEX MAST	22
	选配表 6 <Optional Parts List 6>	2 级宽视野门架 SIMPLEX MAST	24
图 11 Fig.11	第四联油路 Fourth oil	2 级宽视野门架 SIMPLEX MAST	25
	选配表 7 <Optional Parts List 7>	2 级宽视野门架 SIMPLEX MAST	27
图 12 Fig.12	起升组件 Lifting part	2 级全自由门架 DUPLEX MAST	28
图 13 Fig.13	链条总成 Chain assy	2 级全自由门架 DUPLEX MAST	32
	选配表 8 <Optional Parts List 8>	2 级全自由门架 DUPLEX MAST	34
图 14 Fig.14	门架 Mast	2 级全自由门架 DUPLEX MAST	34
	选配表 9 <Optional Parts List 9>	2 级全自由门架 DUPLEX MAST	35
图 15 Fig.15	货叉架总成 Fork shelf assy	2 级全自由门架 DUPLEX MAST	36
图 16 Fig.16	侧移架总成 Side shifter assy	2 级全自由门架 DUPLEX MAST	37
图 17 Fig.17	右升降油缸/Lift cylinder,Right 左升降油缸/Lift cylinder,Left	2 级全自由门架 DUPLEX MAST —2010.02	39
	选配表 10 <Optional Parts List 10>	2 级全自由门架 DUPLEX MAST —2010.02	41
图 17-1 Fig.17-1	右升降油缸/Lift cylinder,Right 左升降油缸/Lift cylinder,Left	2 级全自由门架 DUPLEX MAST 2010.03—	42
	选配表 10-1 <Optional Parts List 10-1>	2 级全自由门架 DUPLEX MAST 2010.03—	44

序号 Item	名称 Description	适用车型 Serial NO.	页码 Page
图 18 Fig.18	短升降油缸 Lift cylinder,Short	2 级全自由门架 3 级全自由门架 DUPLEX MAST TRIPLEX MAST	45
	选配表 11 <Optional Parts List 11>	2 级全自由门架 3 级全自由门架 DUPLEX MAST TRIPLEX MAST	47
图 19 Fig.19	油路系统 Mast piping	2 级全自由门架 DUPLEX MAST	48
	选配表 12 <Optional Parts List 12>	2 级全自由门架 DUPLEX MAST	50
图 20 Fig.20	侧移油路 lateral moving circuit	2 级全自由门架 DUPLEX MAST	51
	选配表 13 <Optional Parts List 13>	2 级全自由门架 DUPLEX MAST	55
图 21 Fig.21	第四联油路 Fourth oil	2 级全自由门架 DUPLEX MAST	56
	选配表 14 <Optional Parts List 14>	2 级全自由门架 DUPLEX MAST	58
图 22 Fig.22	起升组件 Lifting part	3 级全自由门架 TRIPLEX MAST	59
图 23 Fig.23	链条总成 Chain assy	3 级全自由门架 TRIPLEX MAST	63
	选配表 15 <Optional Parts List 15>	3 级全自由门架 TRIPLEX MAST	64
图 24 Fig.24	门架 Mast	3 级全自由门架 TRIPLEX MAST	65
	选配表 16 <Optional Parts List 16>	3 级全自由门架 TRIPLEX MAST	66
图 25 Fig.25	货叉架总成 Fork shelf assy	3 级全自由门架 TRIPLEX MAST	67

序号 Item	名称 Description	适用车型 Serial NO.	页码 Page
图 26 Fig.26	侧移架总成 Side shifter assy	3 级全自由门架 TRIPLEX MAST	69
图 27 Fig.27	右升降油缸/Lift cylinder,Right 左升降油缸/Lift cylinder,Left	3 级全自由门架 TRIPLEX MAST	71
	选配表 17 <Optional Parts List 17>	3 级全自由门架 TRIPLEX MAST	73
图 28 Fig.28	倾斜油缸 Tilt cylinder	3 级全自由门架 TRIPLEX MAST	74
	选配表 18 <Optional Parts List 18>	3 级全自由门架 TRIPLEX MAST	76
图 29 Fig.29	油路系统 Mast piping	3 级全自由门架 TRIPLEX MAST	77
	选配表 19 <Optional Parts List 19>	3 级全自由门架 TRIPLEX MAST	80
图 30 Fig.30	侧移油路 lateral moving circuit	3 级全自由门架 TRIPLEX MAST	81
	选配表 20 <Optional Parts List 20>	3 级全自由门架 TRIPLEX MAST	85
图 31 Fig.31	第四联油路 Fourth oil	3 级全自由门架 TRIPLEX MAST	86
	选配表 21 <Optional Parts List 21>	3 级全自由门架 TRIPLEX MAST	88

图 I 货叉总成
Fig. I Fork assy

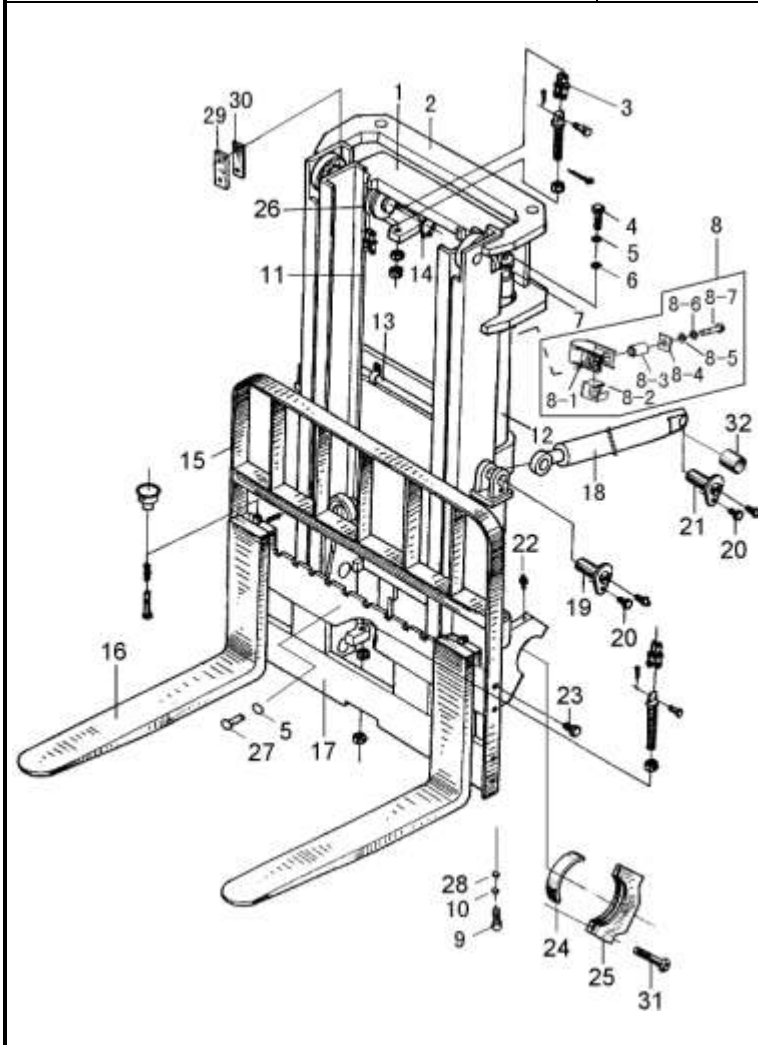
1t-1.8t 2级宽视野门架, SIMPLEX MAST
 1t-1.8t 2级全自由门架, DUPLEX MAST
 1t-1.8t 3级全自由门架, TRIPLEX MAST



序号 Item	物料码 Part NO.	名称 Description	数量 Qty	备注或适用车型 Remarks Or Serial NO.
A1	N15M300-010000-000	货叉总成 Fork assy	1	1t-1.8t
1	NO PART NO.	货叉体 Fork	1	
2	N25M300-011000-W00	销轴组件 Pin shaft assy	1	
2-1	NO PART NO.	把手 Knob	1	
2-2	NO PART NO.	弹簧 Spring	1	
2-3	NO PART NO.	销轴 Pin shaft	1	

图1 起升组件
Fig.1 Lifting part

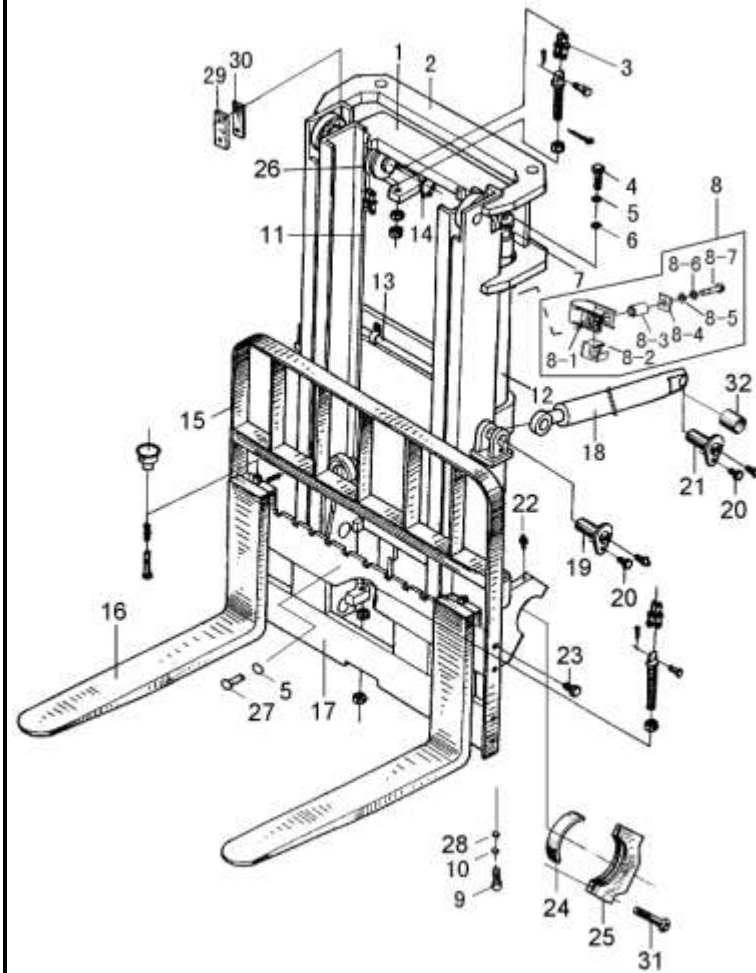
1t-1.8t 2级宽视野门架 SIMPLEX MAST



序号 Item	物料码 Part NO.	名称 Description	数量 Qty	备注或适用车型 Remarks or Serial NO.
1		内门架 Inside mast	1	See Fig.3
2		外门架 Outside mast	1	See Fig.3
3		链条总成 Chain assy	2	See Fig.2
4	G005786-012040-00	螺栓 M12×40 Bolt M12×40	2	
5	G000093-000012-00	垫圈 12 Washer 12	3	
6	G0097P1-000012-00	垫圈 12 Washer 12	2	
7	N30M300-000012-000	油缸调整垫圈 Ajust gasket	2 组	
8	X15M300-001000-000	油缸抱箍 Cylinder Hoop	2	1t-1.8t
8-1	X15M300-001100-000	围板组合件 Boarding module	2	1t-1.8t
8-2	X15M300-001005-000	橡胶塞 Rubber plug	2	1t-1.8t
8-3	X25M300-001004-000	无缝钢管 Seamless steel tube	2	
8-4	X25M300-001003-000	垫块 Cushion	2	
8-5	G000096-000012-00	垫圈 12 Washer 12	2	
8-6	G000093-000012-00	垫圈 12 Washer 12	2	
8-7	G005782-012080-00	螺栓 M12×80 Bolt M12×80	2	

图 1 起升组件
Fig.1 Lifting part

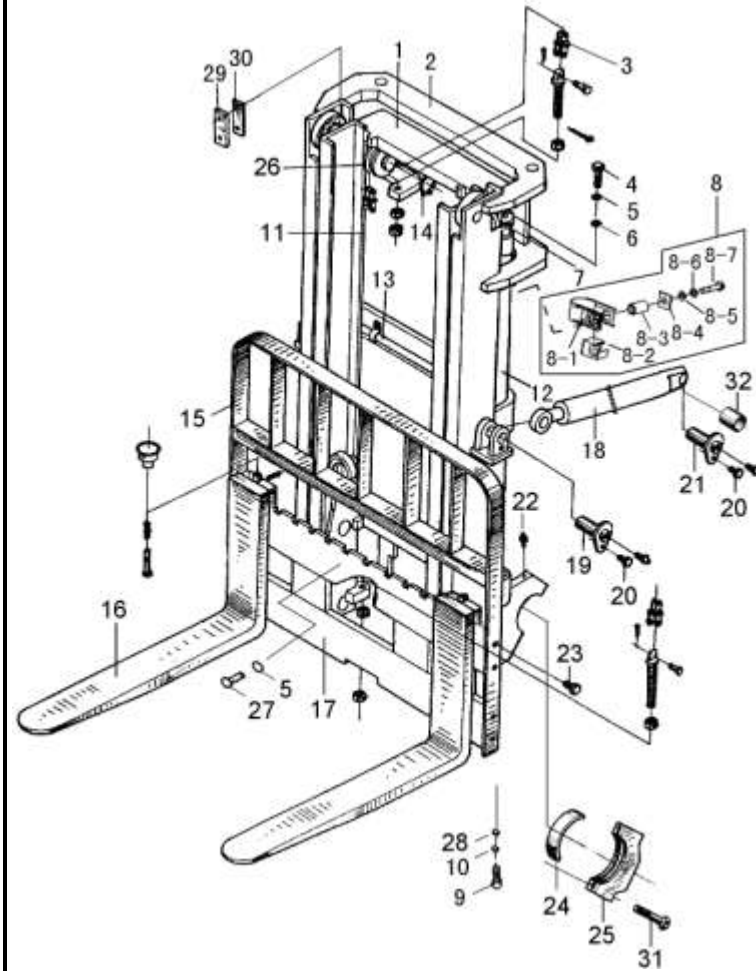
1t-1.8t 2级宽视野门架 SIMPLEX MAST



序号 Item	物料码 Part NO.	名称 Description	数量 Qty	备注或适用车型 Remarks or Serial NO.
9	G000070-008030-00	螺钉 M8×30 Screw M8×30	2	
10	G000093-000010-00	垫圈 10 Washer 10	2	
11		右升降油缸 Lift cylinder,Right	1	See Fig.7
12		左升降油缸 Lift cylinder,Left	1	See Fig.7
13	X15M300-700000-000	油路系统 Oil pipe system	1	See Fig.9
14	G0894P1-000040-00	挡圈 40 Snap ring 40	2	
15	N15M300-020000-002	挡货架 Load bracket	1	
16	N15M300-010000-000	货叉总成 Fork assy	1	1t-1.8t
17		货货架总成 Fork shelf assy	1	See Fig.4
17		侧移架总成 Side shifter assy	1	See Fig.5
18		倾斜油缸 Tilt cylinder	2	See Fig.8
19	X15M300-002000-000	销轴 Pin shaft	2	
20	N30M300-004000-000	螺栓 Bolt	4	
21	X15M300-003000-000	销轴 Pin shaft	2	
22	G001152-010001-00	油杯 Oil cup	4	

图1 起升组件
Fig.1 Lifting part

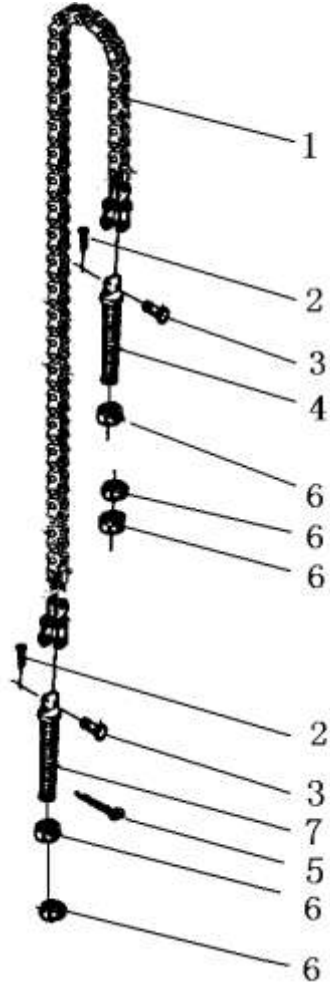
1t-1.8t 2级宽视野门架 SIMPLEX MAST



序号 Item	物料码 Part NO.	名称 Description	数量 Qty	备注或适用车型 Remarks or Serial NO.
23	N30M300-006000-000	螺栓 Bolt	8	
24	N15M300-000006-000	轴瓦 Bearing liner	2	
25	N15M300-000005-002	轴承盖 Bearing cap	2	
26	780708F1-G00	链轮 Chain wheel	2	1t-1.5t
26	780708F-G00	链轮 Chain wheel	2	1.8t
27	G005783-012025-00	螺栓 M12×25 Bolt M12×25	1	
28	G0097P1-000010-00	垫圈 10 Washer 10	2	
29	N30M300-000014-000	导轨衬垫 Guide board	2	
30	N30M300-000015-000	调整垫片 Adjust shim	2组	
31	N15M300-005000-000	螺栓 M14×1.5×45 Bolt M14×1.5×45	4	
32	X15M300-000001-W00	复合衬套 composite bushing	2	

图2 链条总成
Fig.2 Chain assy

1.0t-1.8t 2级宽视野门架 SIMPLEX MAST



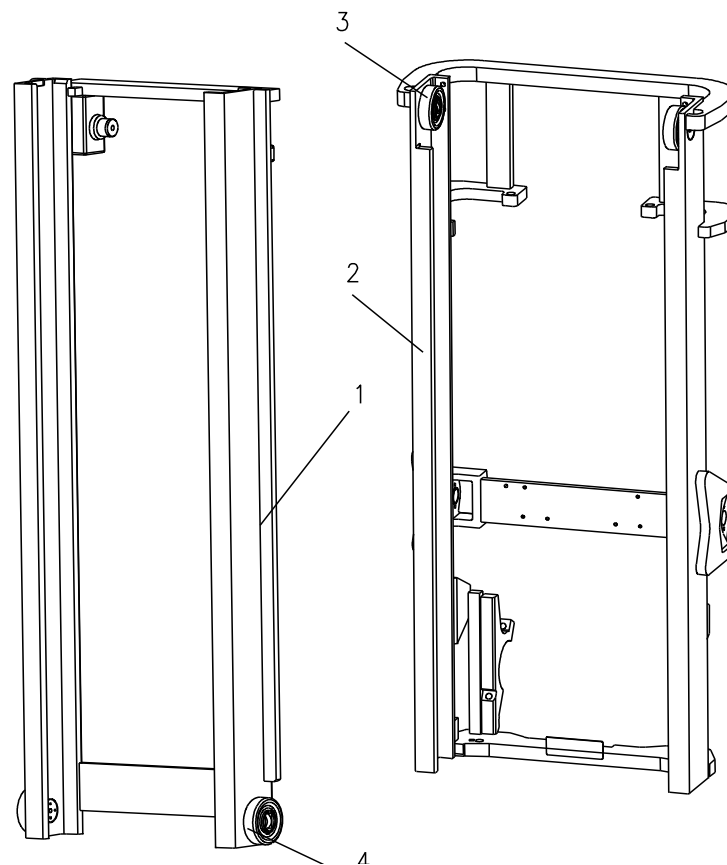
序号 Item	物料码 Part NO.	名称 Description	数量 Qty	备注或适用车型 Remarks or Serial NO.
A1		链条总成 Chain assy	2	See OP.Parts 3,1t-1.5t
A2		链条总成 Chain assy	2	See OP.Parts 3,1.8t
1	NO PART NO.	板式链 LH1223xN Chain LH1223xN	1	1t-1.5t
1	NO PART NO.	板式链 LH1234xN Chain LH1234xN	1	1.8t
2	G000091-004035-00	销 4×35 Pin 4×35	2	
3	NO PART NO.	销轴 Pin shaft	2	
4	NO PART NO.	链条接头 1 Connector 1	2	
5	RC25M300-030001-000	销 Pin	2	
6	G006171-000016-02	螺母 M16×1.5 Nut M16×1.5	5	
7	NO PART NO.	链条接头 2 Connector 2	2	

选配表 1 <Optional Parts List 1>

序号 Item.	A1 (1t-1.5t)	A2 (1.8t)
起升高度 Lift Height	物料码 Part NO.	物料码 Part NO.
2000	R15M200-030000-000	R18M200-030000-000
2500	1.5M2.5H-002000	1.8M2.5H-002000
2700	R15M270-030000-000	R18M270-030000-000
3000	1.5M3H-002000	R18M300-030000-000
3300	1.5M3.3H-002000	1.8M3.3H-002000
3500	1.5M3.5H-002000	1.8M3.5H-002000
3600	X15M360-030000-000	X18M360-030000-000
3700	R15M370-030000-000	R18M370-030000-000
4000	R15M400-030000-000	R18M400-030000-000
4300	R15M430-030000-000	R18M430-030000-000
4500	X15M450-030000-000	X18M450-030000-000
4700	R15M470-030000-000	R18M470-030000-000
4800	N15M470-030000-000	N18M470-030000-000
5000	1.5M4.7H-002000	1.8M4.7H-002000
5500	R15M550-030000-000	R18M550-030000-000
6000	R15M600-030000-000	R18M600-030000-000

图3 门架
Fig.3 Mast

2级宽视野门架 SIMPLEX MAST



序号 Item	物料码 Part NO.	名称 Description	数量 Qty	备注或适用车型 Remarks or Serial NO.
1	See OP.Parts 2	内门架 Inside mast	1	
2	See OP.Parts 2	外门架 outside mast	1	
3	760211B-G00	复合滚轮 Complex roller	2	≤2012-07
3	X15M300-004000-G00	复合滚轮组 Complex roller assy	2	≥2012-08
4	760211A-G00	复合滚轮 Complex roller	2	≤2012-07
4	X15M300-004000-G00	复合滚轮组 Complex roller assy	2	≥2012-08

选配表 2 <Optional Parts List 2>

序号 Item.	1 ≤2012-07 内门架 Inside mast	1 ≥2012-08 内门架 Inside mast	2 ≤2012-07 外门架 Outside mast	2 ≥2012-08 外门架 Outside mast
起升高度 Lift Height	物料码 Part NO.	物料码 Part NO.	物料码 Part NO.	物料码 Part NO.
2000	X15M200-200000-000	X15M200-200000-001	X15M200-100000-000	X15M200-100000-001
2500	X15M250-200000-000	X15M250-200000-001	X15M250-100000-000	X15M250-100000-001
2700	X15M270-200000-000	X15M270-200000-001	X15M270-100000-000	X15M270-100000-001
3000	X15M300-200000-000	X15M300-200000-001	X15M300-100000-000	X15M300-100000-001
3300	X15M330-200000-000	X15M330-200000-001	X15M330-100000-000	X15M330-100000-001
3500	X15M350-200000-000	X15M350-200000-001	X15M350-100000-000	X15M350-100000-001
3600	X15M360-200000-000	X15M360-200000-001	X15M360-100000-000	X15M360-100000-001
3700	X15M370-200000-000	X15M370-200000-001	X15M370-100000-000	X15M370-100000-001
4000	X15M400-200000-000	X15M400-200000-001	X15M400-100000-000	X15M400-100000-001
4300	X15M430-200000-000	X15M430-200000-001	X15M430-100000-000	X15M430-100000-001
4500	X15M450-200000-000	X15M450-200000-001	X15M450-100000-000	X15M450-100000-001
4700	X15M470-200000-000	X15M470-200000-001	X15M470-100000-000	X15M470-100000-001
4800	X15M480-200000-000	X15M480-200000-001	X15M480-100000-000	X15M480-100000-001
5000	X15M500-200000-000	X15M500-200000-001	X15M500-100000-000	X15M500-100000-001
5500	X15M550-200000-000	X15M550-200000-001	X15M550-100000-000	X15M550-100000-001
6000	X15M600-200000-000	X15M600-200000-001	X15M600-100000-000	X15M600-100000-001

图4 货叉架总成
Fig.4 Fork shelf assy

2级宽视野门架 SIMPLEX MAST

序号 Item	物料码 Part NO.	名称 Description	数量 Qty	备注或适用车型 Remarks or Serial NO.
A1	X15M300-300000-000	货叉架总成 Fork shelf assy	1	1t-1.5t ≤2012-07
A1	X15M300-300000-001	货叉架总成 Fork shelf assy	1	1t-1.5t ≥2012-08
A2	X18M300-300000-000	货叉架总成 Fork shelf assy	1	1.8t ≤2012-07
A2	X18M300-300000-001	货叉架总成 Fork shelf assy	1	1.8t ≥2012-08
1	760211A-G00	复合滚轮 Complex roller	4	≤2012-07
1	X15M300-004000-G00	复合滚轮组 Complex roller assy	4	≥2012-08
2	X15M300-301000-001	货叉架 Fork carriage	1	1t-1.5t X15M300-301000-000
2	X18M300-301000-001	货叉架 Fork carriage	1	1.8t X18M300-301000-000
A2	X15M300-304000-000	侧滚轮组 Side roller assy	2	包含/INC:3-8
3	80605K-G00	侧向滚轮 Cross roller	2	
4	1.5M3H-300001	侧滚轮轴 Side roller shaft	2	N15M300-300001-001
5	G0894P1-000025-00	挡圈 25 Snap ring 25	4	
6	3U3A-100002	调整垫片 Ajusting shim	4组	N15M300-300002-001
7	G000093-000012-00	垫圈 12 Washer 12	4	
8	G005782-012040-00	螺栓 M12×40 Bolt M12×40	4	

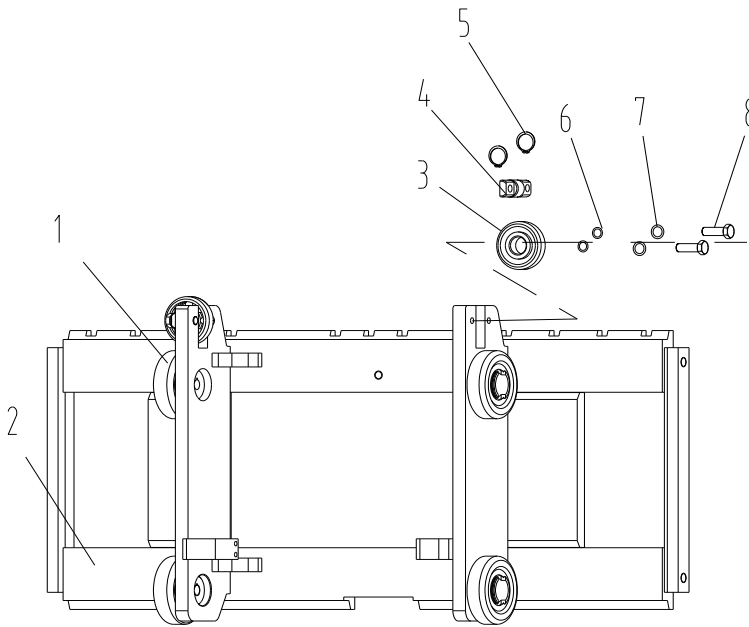
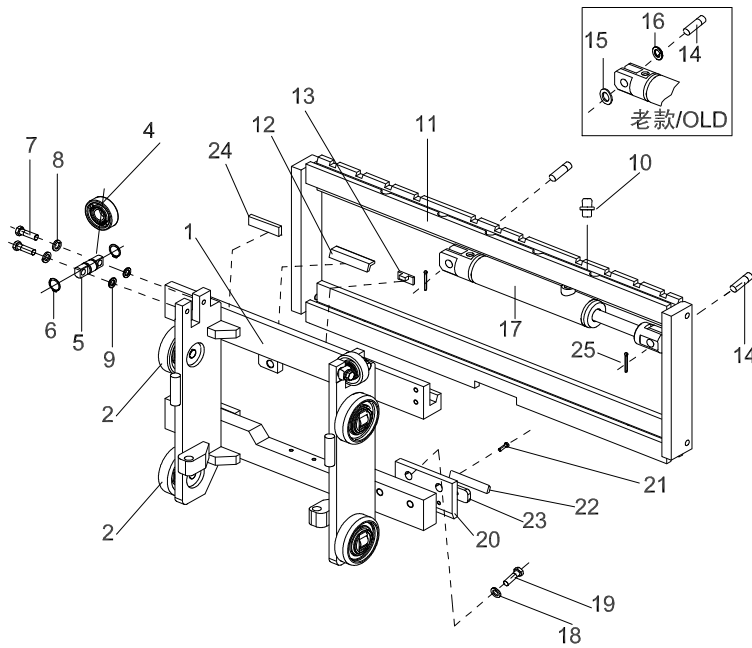


图5 侧移架总成
Fig.5 Side shifter assy

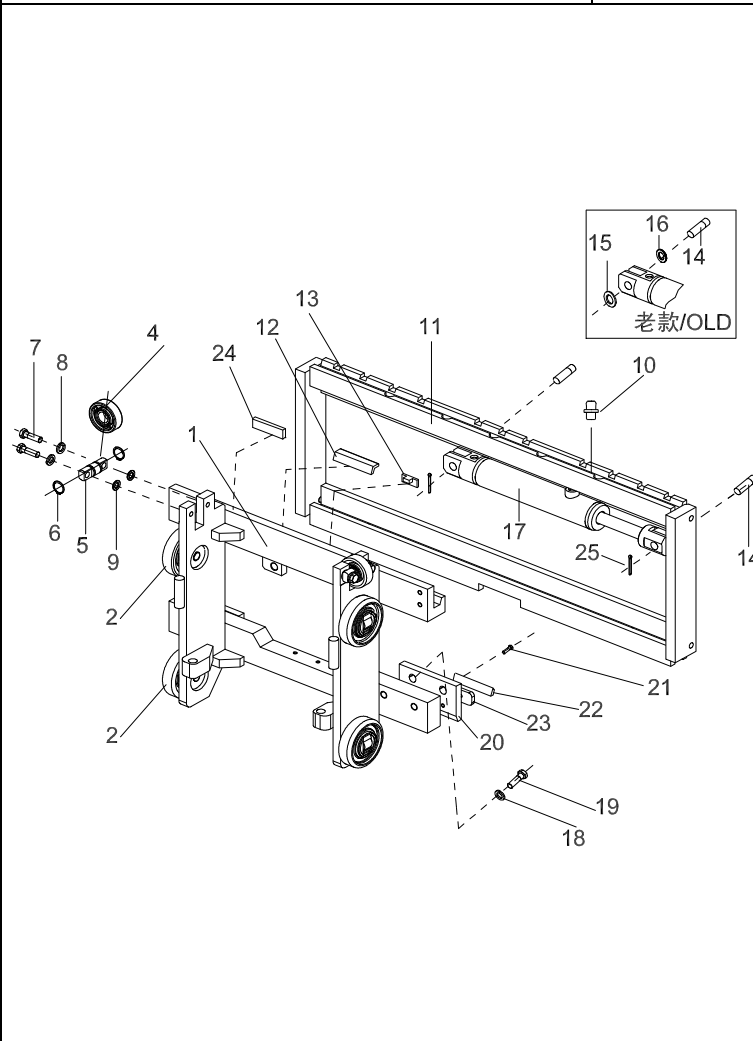
1.0t-1.8t 2级宽视野门架 SIMPLEX MAST



序号 Item	物料码 Part NO.	名称 Description	数量 Qty	备注或适用车型 Remarks or Serial NO.
A1	X15B300-300000-000	侧移架总成 Side shifter assy	1	≤2012-07
A1	X15B300-300000-001	侧移架总成 Side shifter assy	1	≥2012-08
1	X15B300-301000-001	叉架体 Fork carriage	1	X15B300-301000-000
2	760211A-G00	复合滚轮 Complex roller	4	≤2012-07
2	X15M300-004000-G00	复合滚轮组 Complex roller assy	4	≥2012-08
A2	X15M300-304000-000	侧滚轮组 Side roller assy	2	包含/INC:4-9
4	80605K-G00	侧向滚轮 25×70×17 Side rolle 25×70×17	2	
5	1.5M3H-300001	侧滚轮轴 Side rolle shaft	2	
6	G0894P1-000025-00	挡圈 25 Snap ring 25	4	
7	G005782-012040-00	螺栓 M12×40 Bolt M12×40	4	
8	G000093-000012-00	垫圈 12 Washer 12	4	
9	3U3A-100002	调整垫片 adjustment pads	4	
10	G001152-006000-00	油杯 M6 Oil cup M6	5	
11	S16V450-302000-000	侧移货叉架 Sidesway Fork carriage	1	
12	S16V450-300001-000	塞铁 Plug	3	

图5 侧移架总成
Fig.5 Side shifter assy

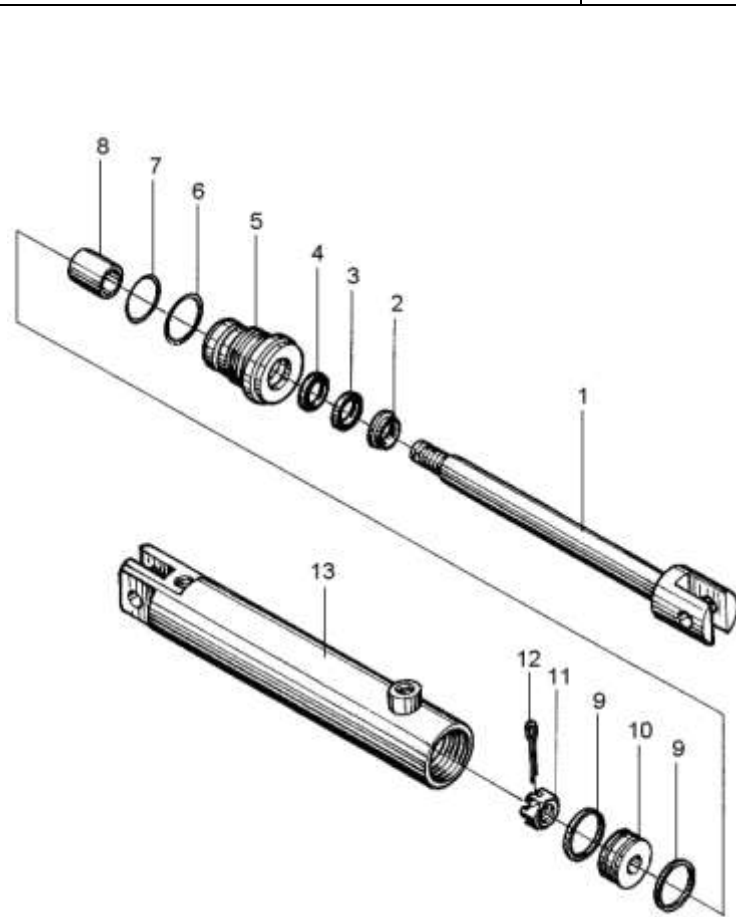
1.0t-1.8t 2级宽视野门架 SIMPLEX MAST



序号 Item	物料码 Part NO.	名称 Description	数量 Qty	备注或适用车型 Remarks or Serial NO.
13	1.4QS1-000006	挡块 Block	2	
14	S16V450-300005-000	轴 Shaft	2	OLD
14	S16V450-300005-001	轴 Shaft	2	NEW
15	G0894P1-000016-00	挡圈 16 Snap ring 16	4	OLD
16	G0097P1-000016-00	垫圈 16 Washer 16	2	OLD
17	S16V450-303000-000	侧移油缸 Sidesway cylinder	1	
18	G000093-000016-00	垫圈 16 Washer 16	4	
19	G005786-016050-01	螺栓 M16×50 Bolt M16×50	4	
20	S16V450-300006-000	挂钩板 Plate	2	
21	G000068-008016-00	螺钉 M8×16 Screw M8×16	4	
22	S16V450-300002-000	下滑块 Block,down	2	
23	S16V450-300008-000	调整垫 Ajusting shim	2	
24	S16V450-300009-000	调整垫 Ajusting shim	2	
25	G000091-3P2030-00	开口销 Split pin	2	NEW

图6 侧移油缸
Fig.6 Side shift cylinder

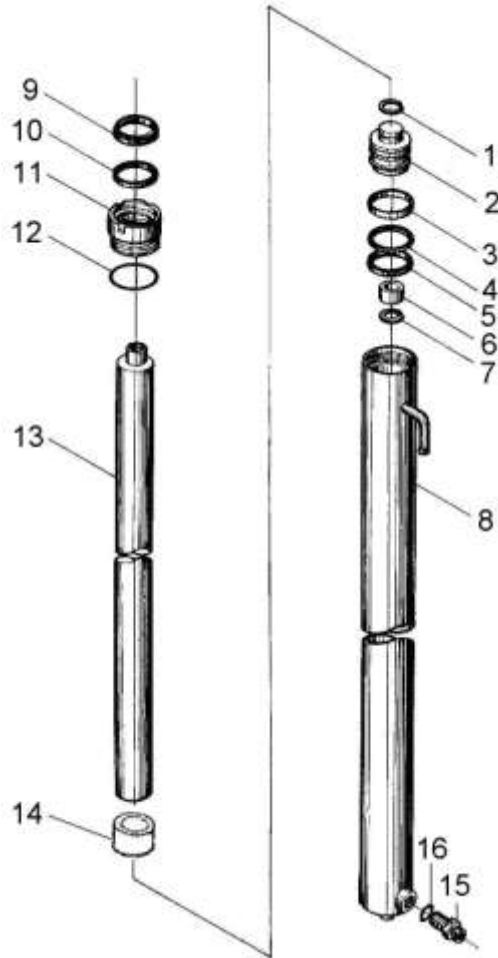
1.0t-3.5t 2级宽视野门架 2级全自由门架 3级全自由门架
1.0t-3.5t SIMPLEX MAST Duplex MAST TRIPLEX MAST



序号 Item	物料码 Part NO.	名称 Description	数量 Qty	备注或适用车型 Remarks or Serial NO.
A	S16V450-303000-000	侧移油缸 Side shifter cylinder	1	INC:1-13
1	S16V450-303200-000	活塞杆 Cylinder rod	1	
2	CK-025-G00	CK 防尘圈 d25 Dustproof d25	1	
3	CKG-025-G00	CKG 密封圈 d25 Seal ring d25	1	
4	CKS-0250-G00	CKS 密封圈 d25 Seal ring d25	1	
5	2025N4.5-133002	导向套 Guide sleeve	1	
6	G001235-005603P5-00	O 形密封圈 56×3.5 O-ring 56×3.5	1	
7	G001235-005003P5-00	O 形密封圈 50×3.5 O-ring 50×3.5	1	
8	2025N4.5-133001	含油油衬 Oil seal	1	
9	3-22-00-10	活塞环 Piston ring	2	
10	3-22-00-03	活塞 Piston	1	
11	3-22-00-02	六角槽形螺母 Nut	1	
12	G000091-004036-00	销 4×36 Pin 4×36	1	
13	S16V450-303100-000	油缸体 Cylinder body	1	
K1	S16V450-303-000-Kit	密封件维修包 Seal kit of side shifter cylinder	1	INC. 2,3,4,6,7

图7 右升降油缸/Lift cylinder,Right
Fig.7 左升降油缸/Lift cylinder,Left

1.0-1.8t 2级宽视野门架 SIMPLEX MAST

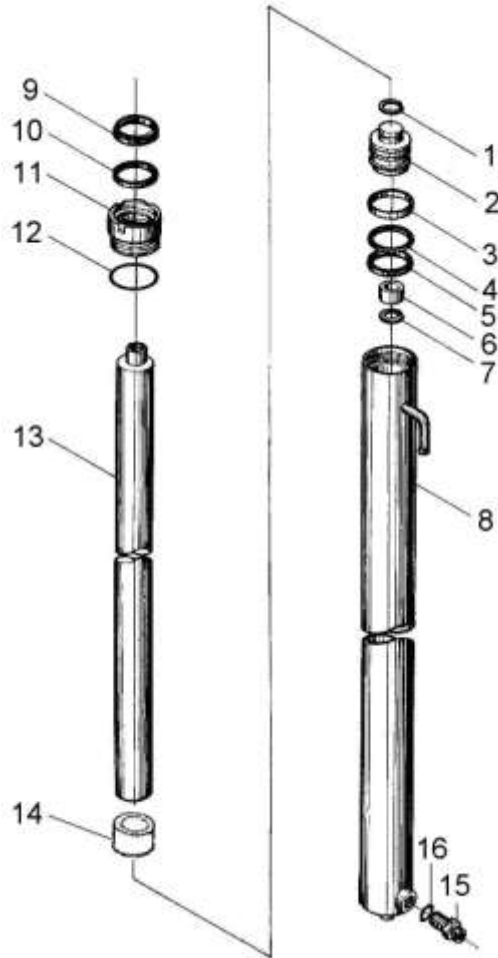


序号 Item	物料码 Part NO.	名称 Description	数量 Qty	备注或适用车型 Remarks or Serial NO.
A1		右升降油缸 Lift cylinder,Right	1	See OP.Parts 3 INC:1-16
A2		左升降油缸 Lift cylinder,Left	1	See OP.Parts 3 INC:1-14
1	G0895P1-000024-00	挡圈 24 Snap ring 24	2	
2	N15M300-400002-W00	活塞 Piston	2	
3	N15M300-400003-W00	支承圈 Support ring	2	
4	N15M300-400004-W00	保护圈 Ring	2	
5	FU0563L0-G00	OSI 密封圈 D45 OSI-seal ring D45	2	
6	N15M300-400005-W00	阀套 Sleeve	2	
7	G0895P1-000024-00	挡圈 24 Snap ring 24	2	
8		右缸体 Cylinder body,Right	1	See OP.Parts 3
8		左缸体 Cylinder body,Left	1	See OP.Parts 3
9	FD2041A0-G00	DKI 防尘圈 d35 LBH-dustproof ring d35	2	
10	FU0424K0-G00	ISI 密封圈 d35 ISI-seal ring d35	2	
11	N15M300-402000-W00	导向套 Guide sleeve	2	

注：序号 1,2,13,组装后为不可拆分整体,用户订购时应订购整个组合件。
Notice: No. 1,2,13,after the assy, it's a whole,also, when user order.

图7 右升降油缸/Lift cylinder,Right
Fig.7 左升降油缸/Lift cylinder,Left

1.0-1.8t 2级宽视野门架 SIMPLEX MAST



序号 Item	物料码 Part NO.	名称 Description	数量 Qty	备注或适用车型 Remarks or Serial NO.
12	G3452P1-46P22P65-00	O形密封圈 46.2×2.65 O-ring 46.2×2.65	2	
13		活塞杆 Piston rod	2	See OP.Parts 3
14		隔套 Sheath	2	See OP.Parts 3
15	X15M300-403000-W00	油嘴组件 Nozzle valve assy	1	右升降油缸 Lift cylinder,Right
16	G3452P1-00142P65-00	O形密封圈 14×2.65 O-ring 14×2.65	1	右升降油缸 Lift cylinder,Right
K1	X15M300-4/5-000-Kit	左右缸修理包 Lift cylinder- KIT	1	For (1.0-1.8t): INC: 5, 9,10,12,16

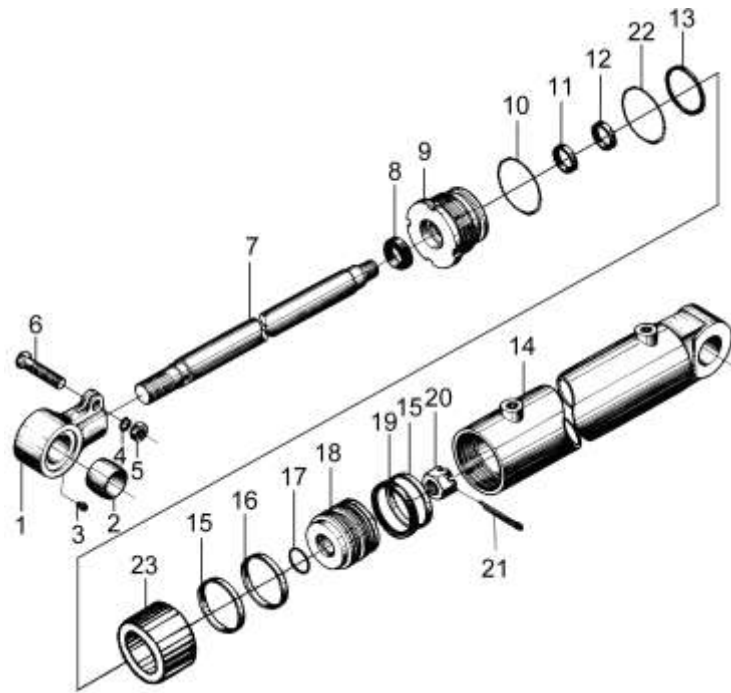
注：序号 1,2,13,组装后为不可拆分整体,用户订购时应订购整个组合件。
Notice: No. 1,2,13,after the assy, it's a whole,also, when user order.

选配表 3 <Optional Parts List 3>

序号 Item	A1 Lift cylinder,Right	A2 Lift cylinder,Left	8 Cylinder body, R	8 Cylinder body , L	13 Piston rod	14 Sheath
起升高度 Lift Height	物料码 Part NO.	物料码 Part NO.	物料码 Part NO.	物料码 Part NO.	物料码 Part NO.	物料码 Part NO.
2000	X15M200-400000-000	X15M200-500000-000	X15M200-401000-W01	X15M200-501000-W01	N15M200-400001-W00	Without part14
2500	X15M250-400000-000	X15M250-500000-000	X15M250-401000-W01	X15M250-501000-W01	N15M250-400001-W00	Without part14
2700	X15M270-400000-000	X15M270-500000-000	X15M270-401000-W01	X15M270-501000-W01	N15M270-400001-W00	Without part14
3000	X15M300-400000-001	X15M300-500000-001	X15M300-401000-W01	X15M300-501000-W01	N15M300-400001-W00	Without part14
3300	X15M330-400000-000	X15M330-500000-000	X15M330-401000-W01	X15M330-501000-W01	N15M330-400001-W00	Without part14
3500	X15M350-400000-000	X15M350-500000-000	X15M350-401000-W01	X15M350-501000-W01	N15M350-400001-W00	Without part14
3600	X15M370-400000-000	X15M370-500000-000	X15M370-401000-W01	X15M370-501000-W01	N15M370-400001-W00	N15M360-400002-W00
3700	X15M360-400000-000	X15M360-500000-000	X15M360-401000-W01	X15M360-501000-W01	N15M360-400001-W00	N15M370-400002-W00
4000	X15M400-400000-000	X15M400-500000-000	X15M400-401000-W01	X15M400-501000-W01	N15M400-400001-W00	N15M400-400002-W00
4300	X15M430-400000-000	X15M430-500000-000	X15M430-401000-W01	X15M430-501000-W01	N15M430-400001-W00	N15M430-400002-W00
4500	X15M450-400000-000	X15M450-500000-000	X15M450-401000-W01	X15M450-501000-W01	N15M450-400001-W00	N15M450-400002-W00
4700	X15M470-400000-000	X15M470-500000-000	X15M470-401000-W01	X15M470-501000-W01	N15M470-400001-W00	N15M470-400002-W00
4800	X15M400-400000-000	X15M400-500000-000	X15M400-401000-W01	X15M400-501000-W01	N15M400-400001-W00	N15M480-400002-W00
5000	X15M500-400000-000	X15M500-500000-000	X15M500-401000-W01	X15M500-501000-W01	N15M500-400001-W00	N15M500-400002-W00
5500	X15M550-400000-000	X15M550-500000-000	X15M550-401000-W01	X15M550-501000-W01	N15M550-400001-W00	N15M550-400002-W00
6000	X15M600-400000-000	X15M600-500000-000	X15M600-401000-W01	X15M600-501000-W01	N15M600-400001-W00	N15M600-400002-W00

图 8 倾斜油缸
Fig.8 Tilt cylinder

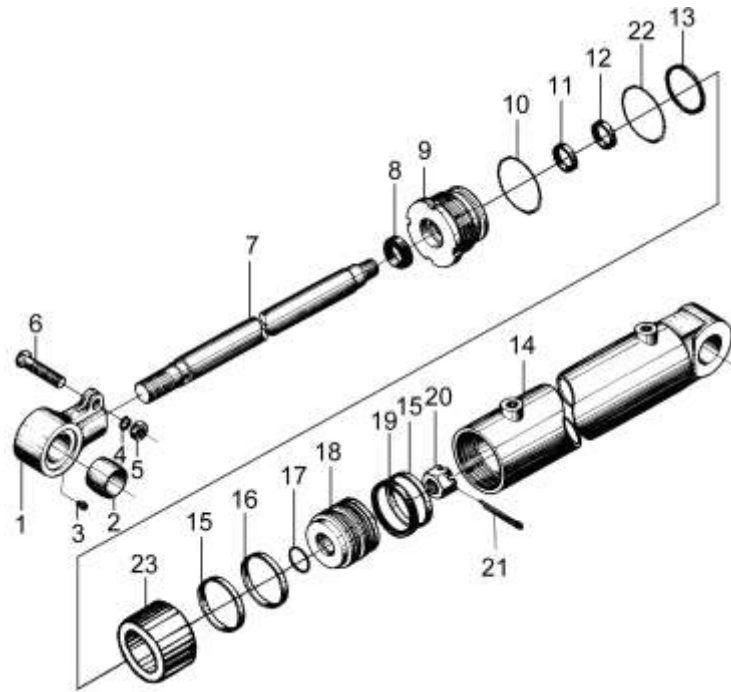
1.0t-1.8t 2级宽视野门架 2级全自由门架
1.0t-1.8t SIMPLEX MAST DUPLEX MAST



序号 Item	物料码 Part NO.	名称 Description	数量 Qty	备注或适用车型 Remarks or Serial NO.
A1		倾斜油缸 Tilt cylinder	2	See OP.Parts 4
1	R30M300-600002-000	耳环 Ear ring	2	
2	N30M300-600002-000	球面轴承 Bearing	2	
3	G001152-006000-00	油杯 M6 Oil cup M6	2	
4	G000093-000014-00	垫圈 14 Washer 14	2	
5	G006171-000014-02	螺母 M14×1.5 Nut M14×1.5	2	
6	G005785-014060-01	螺栓 M14×1.5×60 Bolt M14×1.5×60	2	
7		活塞杆 Piston rod	2	See OP.Parts 4
8	d30-G00	防尘圈 d30×38×5×6.5 Dust ring d30×38×5×6.5	2	
9	N30M300-602000-000	导向套 Guide sleeve	2	
10	G001235-007503P1-00	O 形密封圈 75×3.1 O-ring 75×3.1	2	
11	RU3000300-Z20-G00	U 形密封圈 d30 U-seal ring d30	2	
12	RS1300300-T46NA-G00	斯特封 d30 Seal-ring d30	2	
13	G001235-007005P7-00	O 形密封圈 70×5.7 O-ring 70×5.7	2	
14	X15M300-601000-W00	缸体 Cylinder body	2	

图 8 倾斜油缸
Fig.8 Tilt cylinder

1.0t-1.8t 2级宽视野门架 2级全自由门架
1.0t-1.8t SIMPLEX MAST DUPLEX MAST



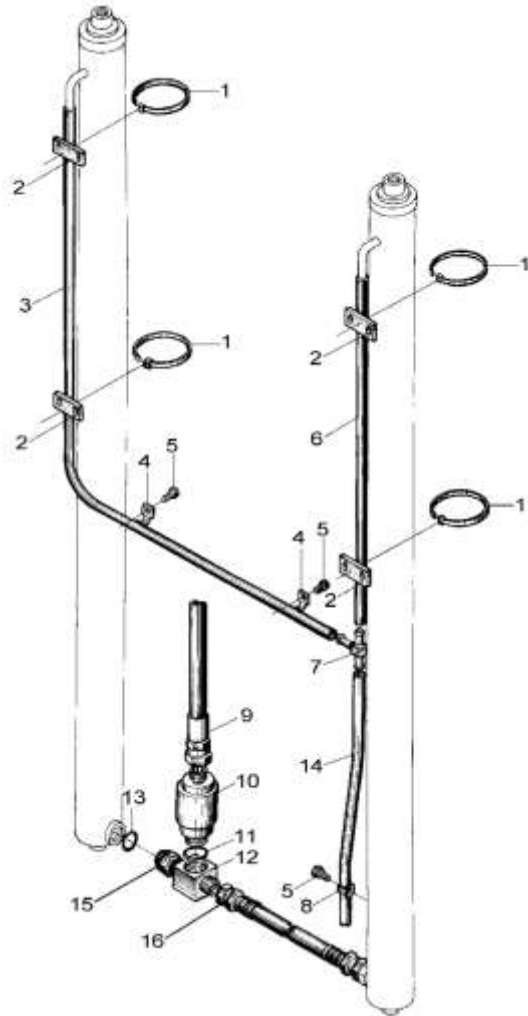
序号 Item	物料码 Part NO.	名称 Description	数量 Qty	备注或适用车型 Remarks or Serial NO.
15	FU0846K0-G00	OSI 密封圈 D70 OSI-seal ring D70	4	
16	3M3H-600009C	挡圈 70×60×2.5 Snap ring 70×60×2.5	1	
17	G001235-003503P1-00	O 形密封圈 35×3.1 O-ring 35×3.1	2	
18	X15M300-600002-W00	活塞 Piston	2	
19	3M3H-600006C	支撑环 Support ring	2	
20	G009459-000024-02	螺母 M24×2 Nut M24×2	2	
21	G000091-005045-00	销 5×45 Pin 5×45	2	
22	N30M300-600006-000	保护圈 70×61×2.5 Ring 70×61×2.5	1	
23		隔套 Spacer bush	2	See OP.Parts 4
K1	X15M300-6-000-Kit	倾斜缸修理包 Tilt cylinder- KIT	1	For (1-1.8t): INC:8,10 -13,15,17

选配表 4 <Optional Parts List 4>

序号 Item.	A1	7	23
起升高度 Lift Height	物料码 Part NO.	物料码 Part NO.	物料码 Part NO.
2000	X15M450-600000-000	X15N450-600003-W00	X15N450-600002-000
2500	X15M300-600000-000	X15M300-600003-W00	Without part 23
2700	X15M300-600000-000	X15M300-600003-W00	Without part 23
3000	X15M300-600000-000	X15M300-600003-W00	Without part 23
3300	X15M300-600000-000	X15M300-600003-W00	Without part 23
3500	X15M300-600000-000	X15M300-600003-W00	Without part 23
3600	X15M300-600000-000	X15M300-600003-W00	Without part 23
3700	X15M300-600000-000	X15M300-600003-W00	Without part 23
4000	X15M300-600000-000	X15M300-600003-W00	Without part 23
4300	X15N450-600000-000	X15N450-600003-W00	X15N450-600002-000
4500	X15N450-600000-000	X15N450-600003-W00	X15N450-600002-000
4700	X15N450-600000-000	X15N450-600003-W00	X15N450-600002-000
4800	X15N450-600000-000	X15N450-600003-W00	X15N450-600002-000
5000	X15N450-600000-000	X15N450-600003-W00	X15N450-600002-000
5500	X15N550-600000-000	X15N550-600003-W00	X15N550-600002-000
6000	X15N550-600000-000	X15N550-600003-W00	X15N550-600002-000

图9 油路系统
Fig.9 Mast piping

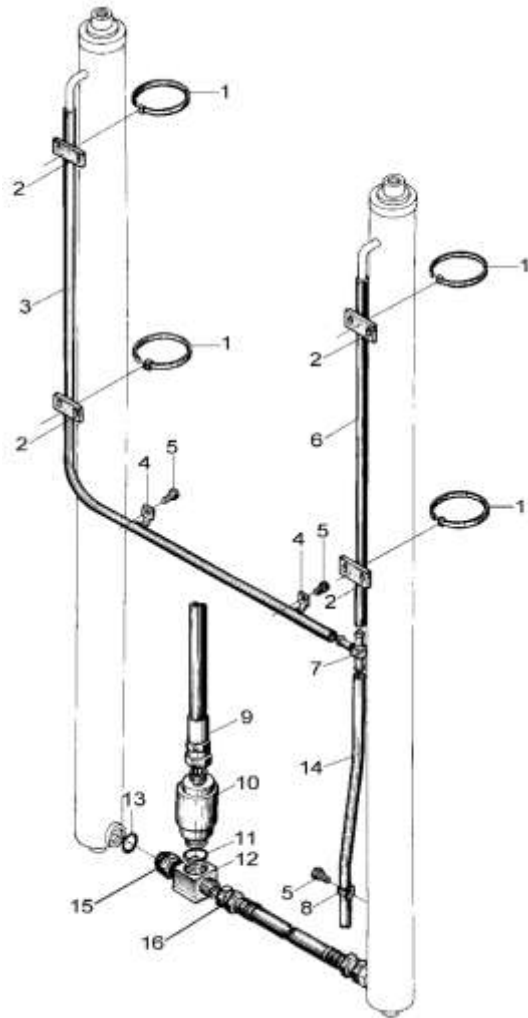
1.0t-1.8t 2级宽视野门架 SIMPLEX MAST



序号 Item	物料码 Part NO.	名称 Description	数量 Qty	备注或适用车型 Remarks or Serial NO.
1	GT-3001-G00	通用尼龙扎带 Clamp-band	5	
2	N30M300-700002-000	镶边 Band	5	
3		回油管 Return oil pipe	1	See OP.Parts 5
4	S16M300-700003-000	管夹 Clip	2	
5	N30M300-003000-000	螺栓 Bolt	3	
6		回油管 Return oil pipe	1	See OP.Parts 5
7	N30M300-700005-000	三通接头 Tee connector	1	
8	N30M300-700008-000	管夹 Clip	1	
9	X25M300-701000-000	油管总成 Oil pipe assy	1	标配 Standard
9	X25M300-701000-500	油管总成 Oil pipe assy	1	液压带感知系统功能 Hydraulic with Sensing System function
10	XSF2-F16L-1.5/40-G00	单向限速阀 Speed limiting valve	1	
11	G001235-002402P4-00	O形密封圈 24x2.4 O-ring 24x2.4	2	
12	RC25U300-704000-000	三通接头 Tee connector	1	

图9 油路系统
Fig.9 Mast piping

1.0t-1.8t 2级宽视野门架 SIMPLEX MAST



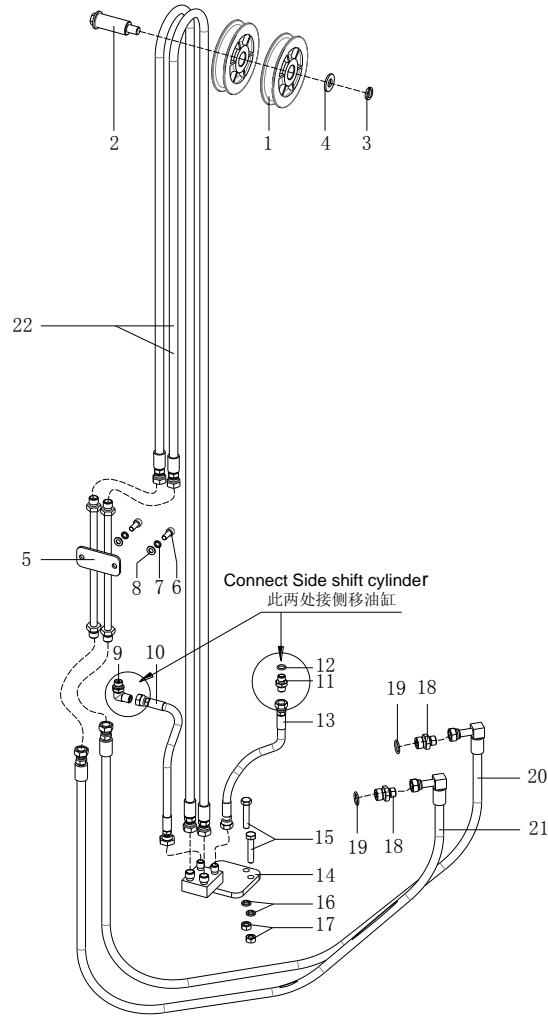
序号 Item	物料码 Part NO.	名称 Description	数量 Qty	备注或适用车型 Remarks or Serial NO.
13	G001235-002002P4-00	O形密封圈 20x2.4 O-ring 20x2.4	1	
14	X15M300-700007-000	回油管 Return oil pipe	1	
15	RC25U300-700002-000	直通管接头 Connecor	1	
16	X15M300-700002-000	胶管接头 Oil pipe assy	1	

选配表 5 <Optional Parts List 5>

序号 Item.	序号 3	序号 6
起升高度 Lift Height	物料码 Part NO.	物料码 Part NO.
2000	X15M200-700001-000	X15M200-700004-000
2500	X15M250-700001-000	X15M250-700004-000
2700	X15M270-700001-000	X15M270-700004-000
3000	X15M300-700001-000	X15M300-700004-000
3300	X15M330-700001-000	X15M330-700004-000
3500	X15M350-700001-000	X15M350-700004-000
3600	X15M360-700001-000	X15M360-700004-000
3700	X15M370-700001-000	X15M370-700004-000
4000	X15M400-700001-000	X15M400-700004-000
4300	X15N430-700001-000	X15N430-700004-000
4500	X15N450-700001-000	X15N450-700004-000
4700	X15M470-700001-000	X15M470-700004-000
4800	X15M480-700001-000	X15M480-700004-000
5000	X15N500-700001-000	X15N500-700004-000
5500	X15N550-700001-000	X15N550-700004-000
6000	X15N600-700001-000	X15N600-700004-000

图 10 侧移油路
Fig.10 lateral moving circuit

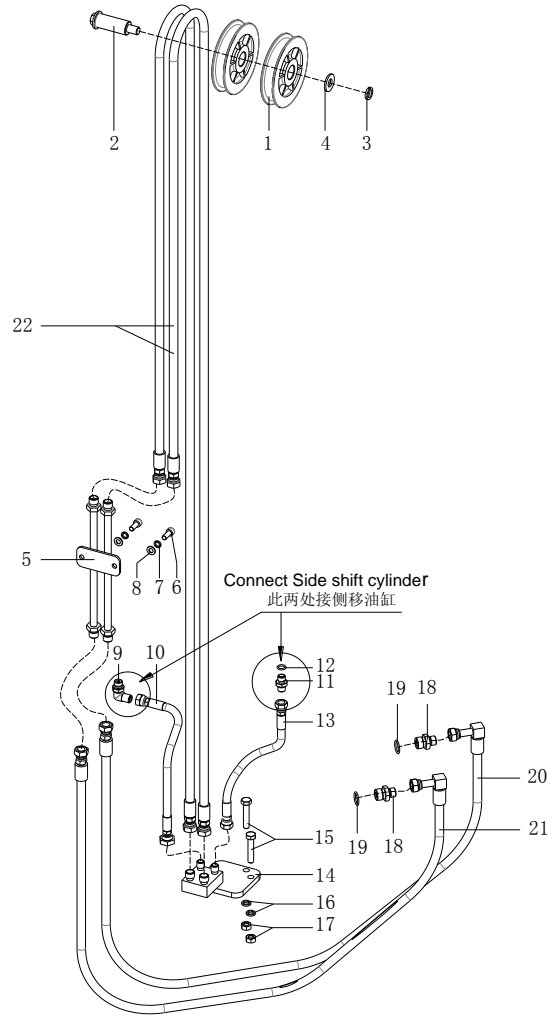
1.0t-1.8t 2级宽视野门架 SIMPLEX MAST



序号 Item	物料码 Part NO.	名称 Description	数量 Qty	备注或适用车型 Remarks or Serial NO.
A1		侧移油路 lateral moving circuit	1	See OP.Parts 6
1	J30B300-900006-000	滑轮 pulley	2	
2	J25B300-900007-000	滑轮轴 pulley shaft	1	
3	G000093-000014-00	垫圈 14 Washer 14	1	
4	J25B300-900005-000	垫圈 Washer	1	
5	RC25B300-902000-000	钢油管 Oil pipe	1	
6	G000070-008020-00	螺钉 M8x20 Screw M8x20	2	
7	G000093-000008-00	垫圈 8 Washer 8	2	
8	G0097P1-000008-00	垫圈 8 Washer 8	2	
9	N163-620800-000	90°管接头 90°Connector	1	
10	X15B300-900003-000	胶管总成 tubing assy	1	
11	S16B300-900011-000	直通接头 Connector	1	
12	JISB2401-P11-G00	O形密封圈 P11 O-ring P11	1	
13	RC25B300-900002-000	胶管总成 tubing assy	1	
14	X15B300-901000-000	接头支座 joint bearing	1	

图 10 侧移油路
Fig.10 lateral moving circuit

1.0t-1.8t 2级宽视野门架 SIMPLEX MAST



序号 Item	物料码 Part NO.	名称 Description	数量 Qty	备注或适用车型 Remarks or Serial NO.
15	G005782-010050-00	螺栓 M10×5 Bolt M10×5	2	
16	G000093-000010-00	垫圈 10 Washer 10	2	
17	G006170-000010-00	螺母 M10 Nut M10	2	
18	RC25V450-900006-000	直通接头 Connector	2	
19	G001235-002202P4-00	O形密封圈 22×2.4 O-ring 22×2.4	2	
20	X25V450-900001-001	胶管接头 hose connector	1	
21	X25V450-900002-001	胶管接头 hose connector	1	
22		胶管接头 hose connector	2	See OP.Parts 6

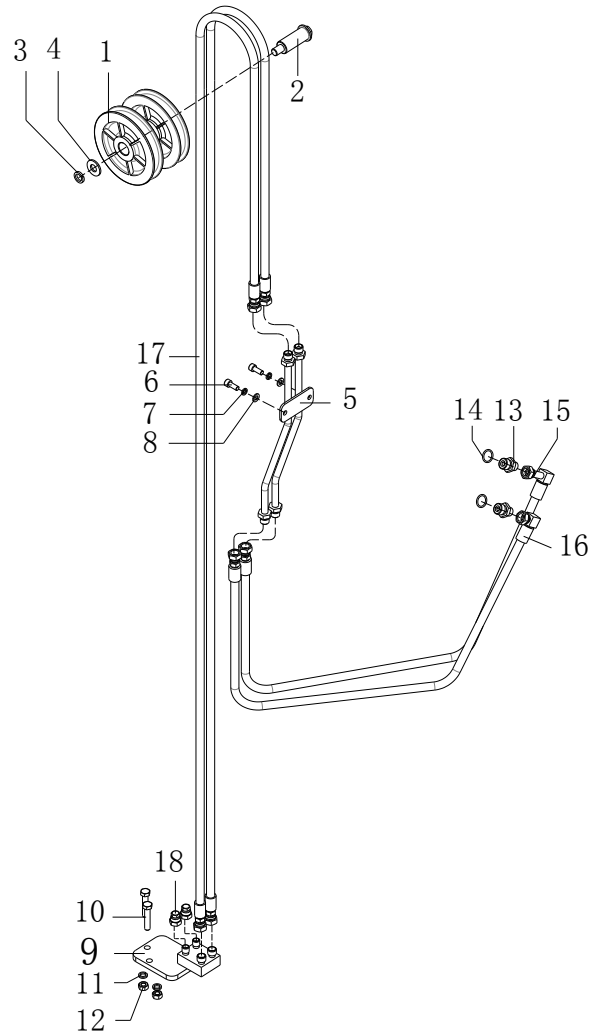
选配表 6 <Optional Parts List 6>

序号 Item	A1	22
起升高度 Lift Height	物料码 Part NO.	物料码 Part NO.
2000	X15B200-900000-000	X15B200-900001-000
2500	X15B250-900000-000	X15B250-900001-000
2700	X15B270-900000-000	X15B270-900001-000
3000	X15B300-900000-000	X15B300-900001-000
3300	X15B330-900000-000	X15B330-900001-000
3500	X15B350-900000-000	X15B350-900001-000
3600	X15B360-900000-000	X15B360-900001-000
3700	X15B370-900000-000	X15B370-900001-000
4000	X15B400-900000-000	X15B400-900001-000
4300	X15B430-900000-000	X15B430-900001-000
4500	X15B450-900000-000	X15B450-900001-000
4700	X15B470-900000-000	X15B470-900001-000
4800	X15B480-900000-000	X15B480-900001-000
5000	X15B500-900000-000	X15B500-900001-000
5500	X15B550-900000-000	X15B550-900001-000
6000	X15B600-900000-000	X15B600-900001-000

图 11 第四联油路

Fig11 Fourth oil

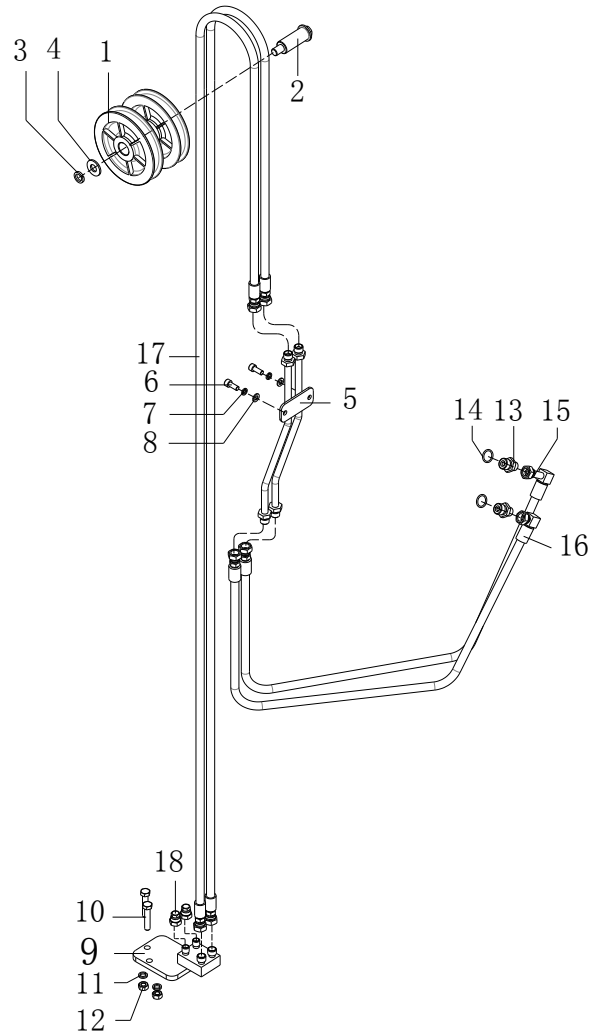
1.0t-1.8t 2级宽视野门架 SIMPLEX MAST



序号 Item	物料码 Part NO.	名称 Description	数量 Qty	备注或适用车型 Remarks or Serial NO.
A1		第四联油路 The fourth joint oil pipeline	1	See OP.Parts 7
1	J25B300-900006-001	滑轮 pulley	2	
2	J25B300-900007-000	滑轮轴 pulley shaft	1	
3	G000093-000014-00	垫圈 14 Washer 14	1	
4	J25B300-900005-000	垫圈 6 Washer 6	1	
5	RC25B300-902000-000	钢油管 Oil pipe	1	
6	G000070-008020-00	螺钉 M8×20 Screw M8×20	2	
7	G000093-000008-00	垫圈 8 Washer 8	2	
8	G0097P1-000008-00	垫圈 8 Washer 8	2	
9	X15B300-801000-000	接头支座 joint bearing	1	
10	G005782-010050-00	螺栓 M10×50 Bolt M10×50	2	
11	G000093-000010-00	垫圈 10 Washer 10	2	
12	G006170-000010-00	螺母 M10 Nut M10	2	
13	RC25V450-900006-000	直通接头 Connector	2	
14	G001235-002202P4-00	O形密封圈 22×2.4 O-ring 22×2.4	2	

图 11 第四联油路
Fig11 Fourth oil

1.0t-1.8t 2级宽视野门架 SIMPLEX MAST



序号 Item	物料码 Part NO.	名称 Description	数量 Qty	备注或适用车型 Remarks or Serial NO.
15	RC25V450-800001-001	胶管接头 hose connector	1	
16	RC25V450-800002-001	胶管接头 hose connector	1	
17		胶管接头 hose connector	2	See OP.Parts 7
18	RC25V450-805000-000	闷盖 cover	2	

选配表 7 <Optional Parts List 7>

序号 Item	A1	17
起升高度 Lift Height	物料码 Part NO.	物料码 Part NO.
2000	X15B200-800000-000	X15B200-900001-000
2500	X15B250-800000-000	X15B250-900001-000
2700	X15B270-800000-000	X15B270-900001-000
3000	X15B300-800000-000	X15B300-900001-000
3300	X15B330-800000-000	X15B330-900001-000
3500	X15B350-800000-000	X15B350-900001-000
3600	X15B360-800000-000	X15B360-900001-000
3700	X15B370-800000-000	X15B370-900001-000
4000	X15B400-800000-000	X15B400-900001-000
4300	X15B430-800000-000	X15B430-900001-000
4500	X15B450-800000-000	X15B450-900001-000
4700	X15B470-800000-000	X15B470-900001-000
4800	X15B480-800000-000	X15B480-900001-000
5000	X15B500-800000-000	X15B500-900001-000
5500	X15B550-800000-000	X15B550-900001-000
6000	X15B600-800000-000	X15B600-900001-000

图 12 起升组件
Fig.12 Lifting part

1t-1.8t 2级全自由门架 DUPLEX MAST

序号 Item	物料码 Part NO.	名称 Description	数量 Qty	备注或适用车型 Remarks or Serial NO.
1		外门架 Outside mast	1	See Fig.14
2		内门架 Inside mast	1	See Fig.14
3	G005786-012040-00	螺栓 M12×1.25×40 Bolt M12×1.25×40	2	
4	G000093-000012-00	垫圈 12 Washer 12	7	
5	G0097P1-000012-00	垫圈 12 Washer 12	6	
6	N30M300-000012-000	油缸调整垫圈 Ajust gasket	2 组	
7	G000070-012050-00	螺钉M12×50 Screw M12×50	1	
8	X15M300-001000-000	油缸抱箍 Cylinder Hoop	2	1t-1.8t
8-1	X15M300-001100-000	围板组合件 Hoardings assy	2	1t-1.8t
8-2	X15M300-001005-000	橡胶塞 Rubber plug	2	1t-1.8t
8-3	X25M300-001004-000	无缝钢管 seamless steel tube	2	
8-4	X25M300-001003-000	垫块 cushion	2	
8-5	G000096-000012-00	垫圈 12 Washer 12	2	
8-6	G000093-000012-00	垫圈 12 Washer 12	2	
8-7	G005782-012080-00	螺栓 M12×80 Bolt M12×80	2	

图 12 起升组件
Fig.12 Lifting part

1t-1.8t 2级全自由门架 DUPLEX MAST

序号 Item	物料码 Part NO.	名称 Description	数量 Qty	备注或适用车型 Remarks or Serial NO.
9		左升降油缸 Lift cylinder,Left	1	See Fig.17-1
10		右升降油缸 Lift cylinder,right	1	See Fig.17-1
11	N30M300-004000-000	螺栓 M10×1.25×20 Bolt M10×1.25×20	4	
12	X15M300-003000-000	销轴 Pin shaft	2	
13	X15M300-000001-W00	复合衬套 composite bushing	2	
14		短升降油缸 Lift cylinder,Short	1	See Fig.18
15		倾斜油缸 Tilt cylinder	2	See Fig.8
16		油路系统 Mast piping	1	See Fig.19
17	G0097P1-000008-00	垫圈 8 Washer 8	2	
18	G000093-000008-00	垫圈 8 Washer 8	2	
19	G000070-010035-00	螺钉M10×35 Screw M10×35	1	
20	G000070-008030-00	螺钉 M8×30 Screw M8×30	2	
21	X15M300-002000-000	销轴 Pin shaft	2	
22	G001152-010001-00	油杯 M10×1 Oil cup M10×1	2	
23	N30M300-006000-000	螺栓 M14×1.5×30 Bolt M14×1.5×30	8	

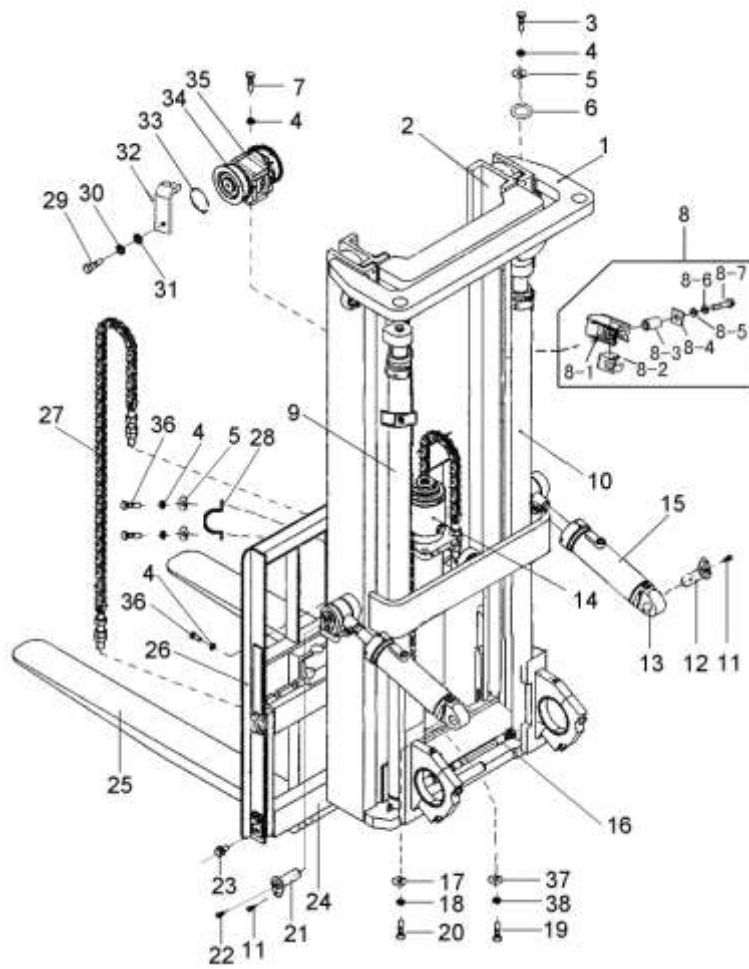


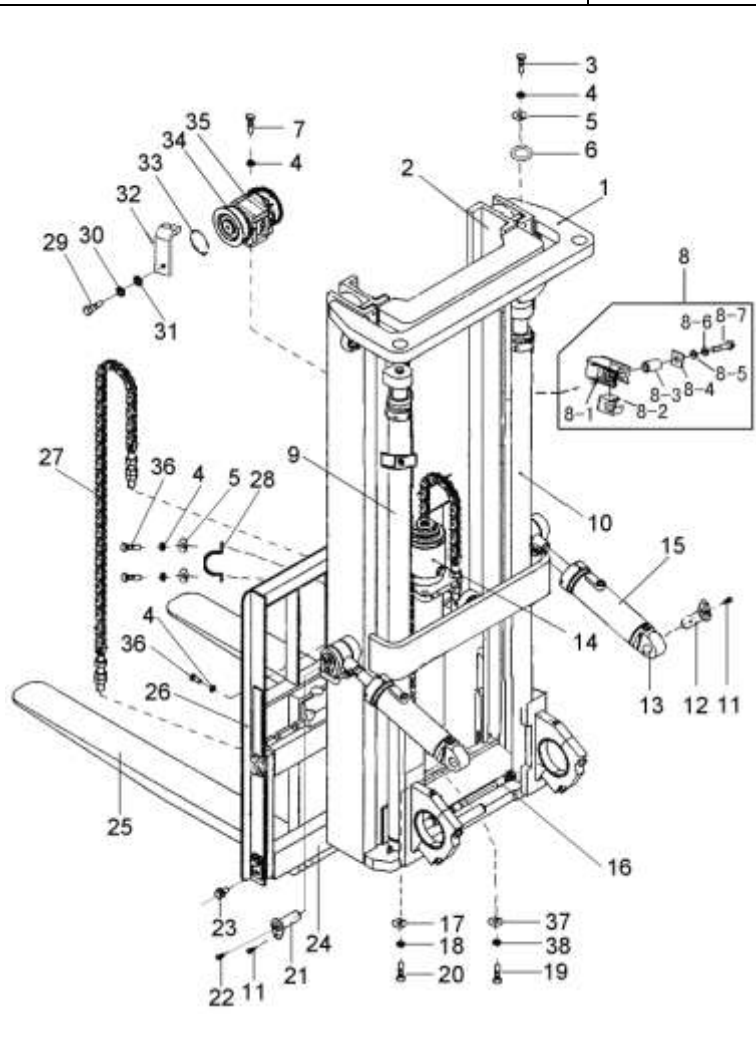
图 12 起升组件
Fig.12 Lifting part

1t-1.8t 2级全自由门架 DUPLEX MAST

序号 Item	物料码 Part NO.	名称 Description	数量 Qty	备注或适用车型 Remarks or Serial NO.
24		货叉架总成 Fork carriage assy	1	See Fig.15
24		侧移架总成 Side shifter assy	1	See Fig.16
25	N15M300-010000-000	货叉总成 Fork assy	2	1t-1.8t
26	N15M300-020000-002	挡货架 Load bracket	1	
27		链条总成 Chain assy	2	See Fig.13
28	X15N450-000001-000	油缸固定板 fixed plate	1	
29	G000070-014025-00	螺钉 M14×25 Screw M14×25	2	内六角螺栓 Inside hexagonal bolt
30	G000093-000014-00	垫圈 14 Washer 14	2	
31	G0097P1-000014-00	垫圈 14 Washer 14	2	
32	X15N450-002000-000	链轮护板 sprocket guard	1	
33	G0894P1-000040-00	挡圈 40 Snap ring 40	2	
34	780708F1-G00	链轮 Chain wheel	2	1t-1.5t
34	780708F-G00	链轮 Chain wheel	2	1.8t
35	X15N450-001000-000	链轮座 Chain wheel seat	1	
36	G005783-012025-00	螺栓 M12×25 Bolt M12×25	3	

图 12 起升组件
Fig.12 Lifting part

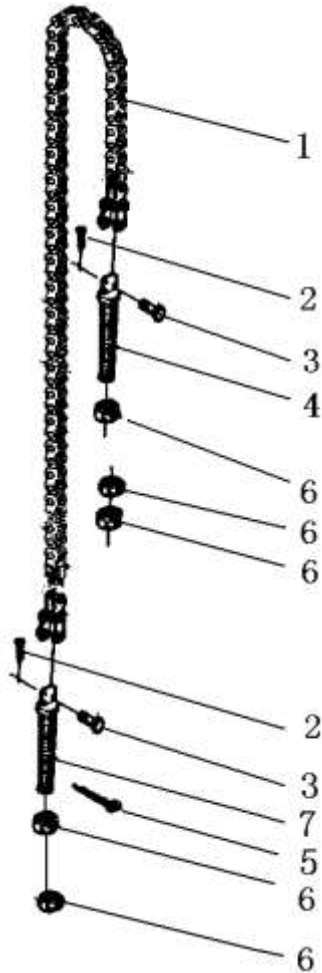
1t-1.8t 2级全自由门架 DUPLEX MAST



序号 Item	物料码 Part NO.	名称 Description	数量 Qty	备注或适用车型 Remarks or Serial NO.
37	G0097P1-000010-00	垫圈 10 Washer 10	1	
38	G000093-000010-00	垫圈 10 Washer 10	1	

图13 链条总成
Fig.13 Chain assy

1.0t-1.8t 2级全自由门架 DUPLEX MAST



序号 Item	物料码 Part NO.	名称 Description	数量 Qty	备注或适用车型 Remarks or Serial NO.
A1		链条总成 Chain assy	1	See OP.Parts 8,1t-1.5t
A2		链条总成 Chain assy	1	See OP.Parts 8,1.8t
1	NO PART NO.	板式链 LH1223xN Chain LH1223xN	1	1t-1.5t
1	NO PART NO.	板式链 LH1234xN Chain LH1234xN	1	1.8t
2	G000091-004035-00	销 4x35 Pin 4x35	2	
3	NO PART NO.	销轴 Pin shaft	2	
4	NO PART NO.	链条接头 1 Connector 1	1	
5	RC25M300-030001-000	销 3.2x35 Pin 3.2x35	2	
6	G006171-000016-02	螺母 M16x1.5 Nut M16x1.5	5	
7	NO PART NO.	链条接头 2 Connector 2	1	

注：链条组装后为不可拆分整体,用户订购时应订购整个组合件。
Notice: The Chain,After the assembly, It is a whole,also, When user order.

选配表 8<Optional Parts List 8>

序 号 Item.	A1 (1t-1.5t)	A2 (1.8t)
起升高度 Lift Height	物料码 Part NO.	物料码 Part NO.
2000	X15U200-040000-000	N18N450-040000-000
2500	S16U270-040000-000	S18U270-040000-000
2700	R15M200-030000-000	R18M200-030000-000
3000	X15N450-040000-000	X18N450-040000-000
3300	X15N500-040000-000	X18N500-040000-000
3500	N15M250-030000-000	N18M250-040000-000
3600	X15U360-040000-000	X18U360-040000-000
3700	1.5M3H--002000	R18M300-030000-000
4000	1.5M3.3H-002000	1.8M3.3H-020000

图 14 门架
Fig.14 Mast

1.0t-1.8t 2级全自由门架 DUPLEX MAST

序号 Item	物料码 Part NO.	名称 Description	数量 Qty	备注或适用车型 Remarks or Serial NO.
1		内门架 Inside mast	1	See OP.Parts 9
2		外门架 Outside mast	1	See OP.Parts 9
3	760211B-G00	复合滚轮 Complex roller	2	≤2012-07
3	X15M300-004000-G00	复合滚轮组 Complex roller assy	2	≥2012-08
4	760211A-G00	复合滚轮 Complex roller	2	≤2012-07
4	X15M300-004000-G00	复合滚轮组 Complex roller assy	2	≥2012-08
5	N15M300-000005-002	轴承盖 Bearing cap	2	
6	N15M300-000006-000	轴瓦 Bearing liner	2	
7	N15M300-005000-000	螺栓 M14×1.5×45 Bolt M14×1.5×45	4	
8	G001152-010001-00	油杯 M10×1 Oil cup M10×1	2	
9	N30M300-000014-000	导轨衬垫 Guide board	2	
10	N30M300-000015-000	调整垫片 Adjust shim	2	

选配表 9<Optional Parts List 9>

序号 Item.	1 ≤2012-07 (内门架 Inside mast)	1 ≥2012-08 (内门架 Inside mast)	2 ≤2012-07 (外门架 Outside mast)	2 ≥2012-08 (外门架 Outside mast)
起升高度 Lift Height	物料码 Part NO.	物料码 Part NO.	物料码 Part NO.	物料码 Part NO.
2000	X15U200-200000-000	X15U200-200000-001	X15U200-100000-000	X15U200-100000-001
2500	X15U250-200000-000	X15U250-200000-001	X15U250-100000-000	X15U250-100000-001
2700	X15U270-200000-000	X15U270-200000-001	X15U270-100000-000	X15U270-100000-001
3000	X15U300-200000-000	X15U300-200000-001	X15U300-100000-000	X15U300-100000-001
3300	X15U330-200000-000	X15U330-200000-001	X15U330-100000-000	X15U330-100000-001
3500	X15U350-200000-000	X15U350-200000-001	X15U350-100000-000	X15U350-100000-001
3600	X15U360-200000-000	X15U360-200000-001	X15U360-100000-000	X15U360-100000-001
3700	X15U370-200000-000	X15U370-200000-001	X15U370-100000-000	X15U370-100000-001
4000	X15U400-200000-000	X15U400-200000-001	X15U400-100000-000	X15U400-100000-001

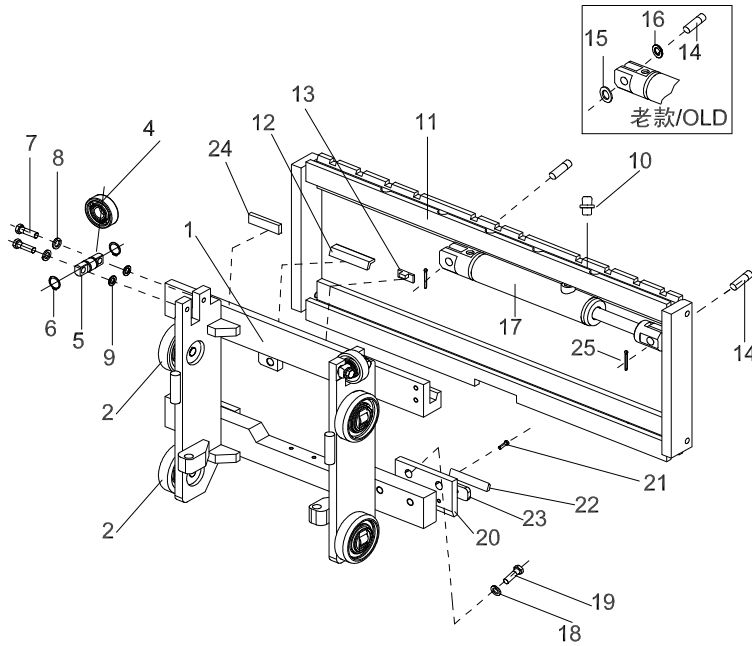
图 15 货叉架总成
Fig.15 Fork shelf assy

1.0t-1.8t 2级全自由门架 DUPLEX MAST

序号 Item	物料码 Part NO.	名称 Description	数量 Qty	备注或适用车型 Remarks or Serial NO.
A1	X15U300-300000-000	货叉架总成 Fork shelf assy	1	1t-1.5t, INC:1-8 ≤2012-07
A1	X15U300-300000-001	货叉架总成 Fork shelf assy	1	1t-1.5t, INC:1-8 ≥2012-08
A2	X18U300-300000-000	货叉架总成 Fork shelf assy	1	1.8t, INC:1-8 ≤2012-07
A2	X18U300-300000-001	货叉架总成 Fork shelf assy	1	1.8t, INC:1-8 ≥2012-08
1	760211A-G00	复合滚轮 φ113.2 Complex roller φ113.2	4	≤2012-07
1	X15M300-004000-G00	复合滚轮组 Complex roller assy	4	≥2012-08
2	X15U300-301000-001	货叉架 Fork carriage	1	1t-1.5t X15U300-301000-000
2	X18U300-301000-001	货叉架 Fork carriage	1	1.8t X18U300-301000-000
A3	X15M300-304000-000	侧滚轮组 Side roller assy	2	包含/INC:3-8
3	80605K-G00	侧向滚轮 25×70×17 Cross roller 25×70×17	2	
4	1.5M3H-300001	侧滚轮轴 Side roller shaft	2	
5	G0894P1-000025-00	挡圈 25 Snap ring 25	4	
6	3U3A-100002	调整垫片 Adjusting shim	4	
7	G000093-000012-00	垫圈 12 Washer 12	4	
8	G005782-012040-00	螺栓 M12×40 Bolt M12×40	4	

图 16 侧移架总成
Fig.16 Side shifter assy

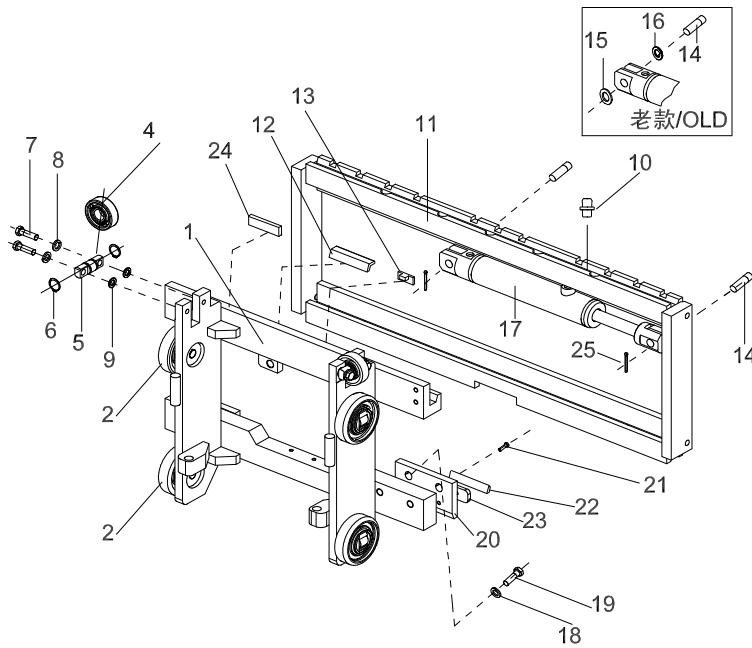
1.0t-1.8t 2级全自由门架 DUPLEX MAST



序号 Item	物料码 Part NO.	名称 Description	数量 Qty	备注或适用车型 Remarks or Serial NO.
A1	X15C300-300000-000	侧移架总成 Side shifter assy	1	≤2012-07
A1	S16C300-300000-001	侧移架总成 Side shifter assy	1	≥2012-08 X15C300-300000-001
1	S16C300-301000-001	叉架体 Fork carriage	1	X15C300-301000-000 X15C300-301000-001
2	760211A-G00	复合滚轮组 Complex roller	4	≤2012-07
2	X15M300-004000-G00	复合滚轮组 Complex roller assy	4	≥2012-08
A3	X15M300-304000-000	侧滚轮组 Side roller assy	2	包含/INC:4-9
4	80605K-G00	侧向滚轮 25×70×17 Side rolle 25×70×17	2	
5	1.5M3H-300001	侧滚轮轴 Side rolle shaft	2	
6	G0894P1-000025-00	挡圈 25 Snap ring 25	4	
7	G005782-012040-00	螺栓 M12×40 Bolt M12×40	4	
8	G000093-000012-00	垫圈 12 Washer 12	2	
9	3U3A-100002	调整垫片 adjustment pads	4	
10	G001152-006000-00	油杯 M6 Oil cup M6	5	
11	S16V450-302000-000	侧移货叉架 Sidesway Fork carriage	1	
12	S16V450-300001-000	塞铁 Plug	3	

图 16 侧移架总成
Fig.16 Side shifter assy

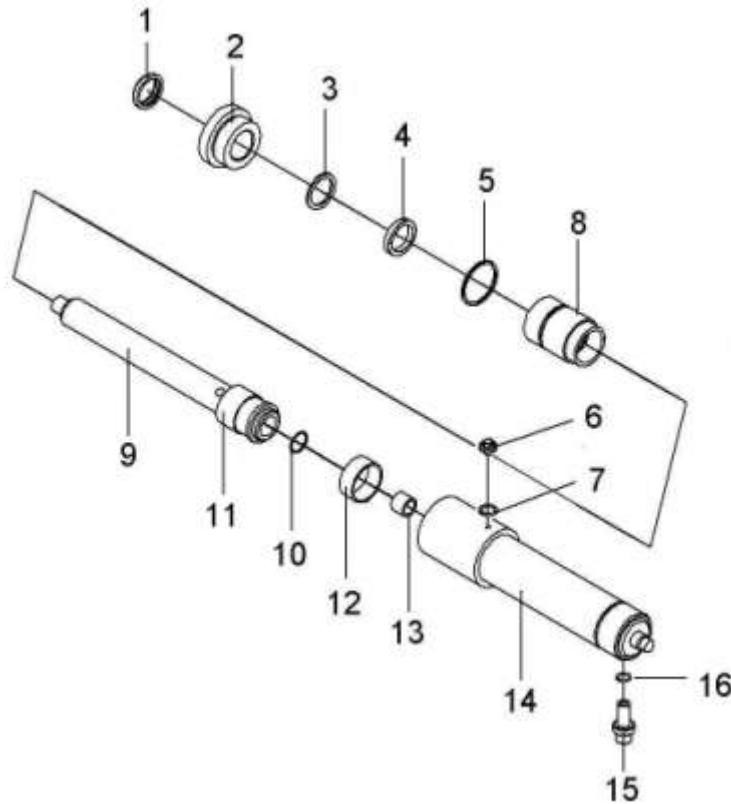
1.0t-1.8t 2级全自由门架 DUPLEX MAST



序号 Item	物料码 Part NO.	名称 Description	数量 Qty	备注或适用车型 Remarks or Serial NO.
13	1.4QS1-000006	挡块 Block	2	
14	S16V450-300005-000	轴 Shaft	2	OLD
14	S16V450-300005-001	轴 Shaft	2	NEW
15	G0894P1-000016-00	挡圈 16 Snap ring 16	4	OLD
16	G0097P1-000016-00	垫圈 16 Washer 16	2	OLD
17	S16V450-303000-000	侧移油缸 Sidesway cylinder	1	
18	G000093-000016-00	垫圈 16 Washer 16	4	
19	G005786-016050-01	螺栓 M16×1.5×50 Bolt M16×1.5×50	4	
20	S16V450-300006-000	挂钩板 Plate	2	
21	G000068-008016-00	螺钉 M8×16 Screw M8×16	4	
22	S16V450-300002-000	下滑块 Block,down	2	
23	S16V450-300008-000	调整垫 Adjusting shim	2	
24	S16V450-300009-000	调整垫 Adjusting shim	2	
25	G000091-3P2030-00	开口销 Split pin	2	NEW

图 17 右升降油缸/Lift cylinder,Right
Fig.17 左升降油缸/Lift cylinder,Left

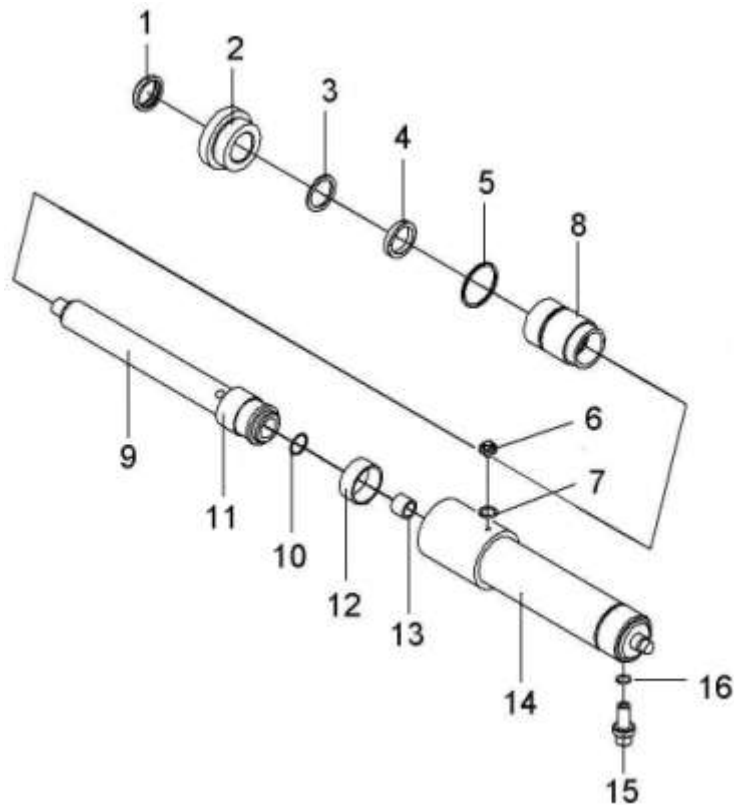
1.0t-1.8t 2级全自由门架 DUPLEX MAST —2010.02



序号 Item	物料码 Part NO.	名称 Description	数量 Qty	备注或适用车型 Remarks or Serial NO.
A1		右升降油缸 Lift cylinder,Right	1	See OP.Parts 10
A2		左升降油缸 Lift cylinder,Left	1	See OP.Parts 10
1	WD1700320-N9-G00	DA 防尘圈 d32 Dust seal ring d32	2	
2	X15U300-400001-W00	缸盖 Cylinder cover	2	
3	X15U300-400004-W00	挡片 Snap ring	2	
4	RU3000320-G00	U 型密封圈 d32 U-seal ring d32	2	
5	G001235-005003P1-00	O 形密封圈 50×3.1 O-ring 50×3.1	2	
6	2.5CDJ-32-00-07	放气螺塞 Plug	2	
7	G001235-001602P4-00	O 形密封圈 16×2.4 O-ring 16×2.4	2	
8	X15U300-400002-W00	导套 Sleeve	2	
9		右柱塞杆 Pole stopper rod,Right	1	See OP.Parts 10
9		左柱塞杆 Pole stopper rod,Left	1	See OP.Parts 10
10	G0895P1-000022-00	挡圈 22 Snap shim 22	2	
11	2.5U3H-400004	支承环 Support ring	2	
12	N15M300-400005-W00	阀套 Sleeve	2	

图 17 右升降油缸/Lift cylinder,Right
 Fig.17 左升降油缸/Lift cylinder,Left

1.0t-1.8t 2级全自由门架 DUPLEX MAST —2010.02



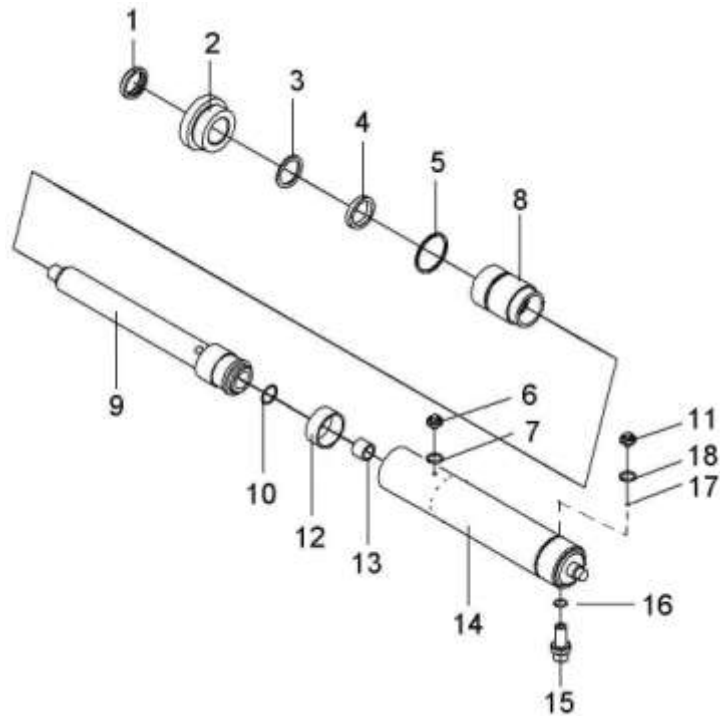
序号 Item	物料码 Part NO.	名称 Description	数量 Qty	备注或适用车型 Remarks or Serial NO.
13	/	/	/	无 without
14		缸体 Cylinder body	2	See OP.Parts 10
15	X15U300-403000-W00	安全阀组件 The module of safety valve	2	右升降油缸 Lifting cylinder,Right
16	G3452P1-00142P65-00	O形密封圈 14x2.65 O-ring 14x2.65	2	右升降油缸 Lifting cylinder,Right
K1	X15U300-4/5-000-Kit	左右缸修理包 Lift cylinder- KIT	1	For (1-1.8t): INC:1,4,5,7,16

选配表 10 <Optional Parts List 10> —2010.02

序号 Item	A1	A2	9, 右柱塞杆 Pole stopper rod , R	9, 左柱塞杆 Pole stopper rod , L	14
起升高度 Lift Height	物料码 Part NO.	物料码 Part NO.	物料码 Part NO.	物料码 Part NO.	物料码 Part NO.
2000	X15U200-400000-000	X15U200-500000-000	X15U200-402000-W00	X15U200-502000-W00	X15U200-401000-W00
2500	X15U250-400000-000	X15U250-500000-000	X15U250-402000-W00	X15U250-502000-W00	X15U250-401000-W00
2700	X15U270-400000-000	X15U270-400000-000	X15U270-402000-W00	X15U270-502000-W00	X15U270-401000-W00
3000	X15U300-400000-000	X15U300-500000-000	X15U300-402000-W00	X15U300-502000-W00	X15U300-401000-W00
3300	X15U330-400000-000	X15U330-500000-000	X15U330-402000-W00	X15U330-502000-W00	X15U330-401000-W00
3500	X15U350-400000-000	X15U350-500000-000	X15U350-402000-W00	X15U350-502000-W00	X15U350-401000-W00
3600	X15U360-400000-000	X15U360-500000-000	X15U360-402000-W00	X15U360-502000-W00	X15U360-401000-W00
3700	X15U400-400000-000	X15U400-500000-000	X15U400-402000-W00	X15U400-502000-W00	X15U400-401000-W00
4000	X15U200-400000-000	X15U200-500000-000	X15U200-402000-W00	X15U200-502000-W00	X15U200-401000-W00

图 17-1 右升降油缸/Lift cylinder,Right
Fig.17-1 左升降油缸/Lift cylinder,Left

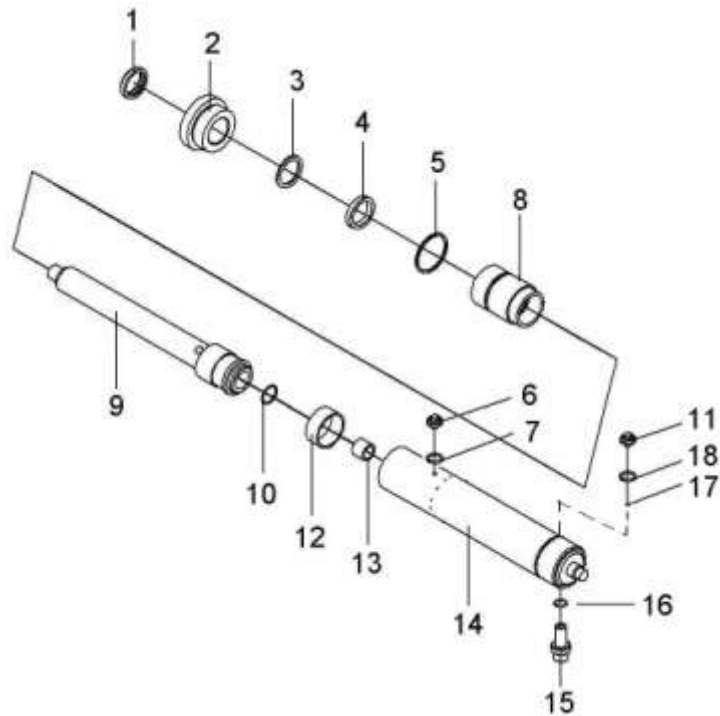
1.0t-1.8t 2级全自由门架 DUPLEX MAST 2010.03—



序号 Item	物料码 Part NO.	名称 Description	数量 Qty	备注或适用车型 Remarks or Serial NO.
A1		右升降油缸 Lift cylinder,Right	1	See OP.Parts 10-1 INC:1-18
A2		左升降油缸 Lift cylinder,Left	1	See OP.Parts 10-1 INC:1-14,17,18
1	WD1700320-N9-G00	DA 防尘圈 d32 Dust seal ring d32	2	
2	X15U300-400001-W01	缸盖 Cylinder cover	2	
3	X15U300-400004-W00	挡片 Snap ring	2	
4	RU3000320-G00	U 型密封圈 d32 U-seal ring d32	2	
5	G001235-005003P1-00	O 形密封圈 50×3.1 O-ring 50×3.1	2	
6	2.5CDJ-32-00-07	放气螺塞 Plug	2	
7	G001235-001602P4-00	O 形密封圈 16×2.4 O-ring 16×2.4	2	
8	SF-1-3230-G00	复合衬套 3230 Sleeve 3230	2	
9		右柱塞杆 Pole stopper rod,Right	1	See OP.Parts 10-1
9		左柱塞杆 Pole stopper rod,Left	1	See OP.Parts 10-1
10	G0895P1-000022-00	挡圈 22 Snap shim 22	2	
11	RC30U300-400007-W00	堵塞 plug	2	
12	2.5U3H-400004	支承环 Support ring	2	

图 17-1 右升降油缸/Lift cylinder,Right
Fig.17-1 左升降油缸/Lift cylinder,Left

1.0t-1.8t 2级全自由门架 DUPLEX MAST 2010.03—



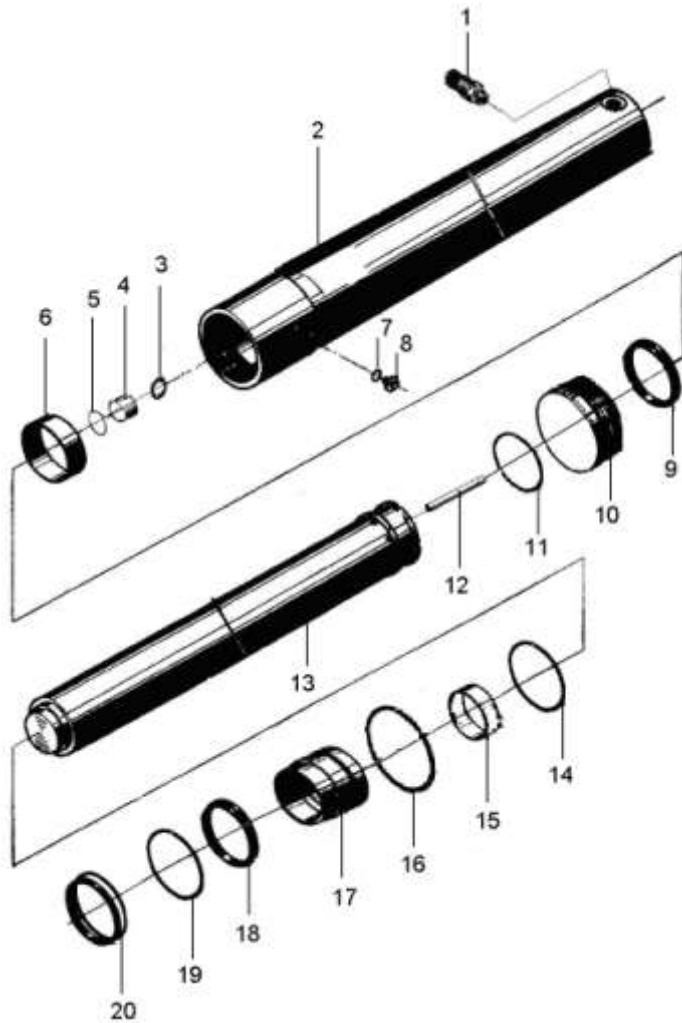
序号 Item	物料码 Part NO.	名称 Description	数量 Qty	备注或适用车型 Remarks or Serial NO.
13	N15M300-400005-W00	阀套 Sleeve	2	
14		缸体 Cylinder body	2	See OP.Parts 10-1
15	X15U300-403000-W00	安全阀组件 The module of safety valve	2	右升降油缸 Lifting cylinder,Right
16	G3452P1-00142P65-00	O形密封圈 14x2.65 O-ring 14x2.65	2	右升降油缸 Lifting cylinder,Right
17	RC30U300-400008-W00	钢球 Φ5 BallΦ5	2	
18	J000982-000008-00	垫圈 8 Washer 8	2	
K1	X15U300-4/5-000-Kit	左右缸修理包 Lift cylinder- KIT	1	For (1-1.8t): INC:1,4,5,7,16

选配表 10-1 <Optional Parts List 10-1> 2010.03—

序号 Item	A1	A2	9, 右柱塞杆 Pole stopper rod , R	9, 左柱塞杆 Pole stopper rod , L	14
起升高度 Lift Height	物料码 Part NO.	物料码 Part NO.	物料码 Part NO.	物料码 Part NO.	物料码 Part NO.
2000	X15U200-400000-000	X15U200-500000-000	X15U200-402000-W00	X15U200-502000-W00	X15U200-401000-W00
2500	X15U250-400000-000	X15U250-500000-000	X15U250-402000-W00	X15U250-502000-W00	X15U250-401000-W00
2700	X15U270-400000-000	X15U270-400000-000	X15U270-402000-W00	X15U270-502000-W00	X15U270-401000-W00
3000	X15U300-400000-000	X15U300-500000-000	X15U300-402000-W00	X15U300-502000-W00	X15U300-401000-W00
3300	X15U330-400000-000	X15U330-500000-000	X15U330-402000-W00	X15U330-502000-W00	X15U330-401000-W00
3500	X15U350-400000-000	X15U350-500000-000	X15U350-402000-W00	X15U350-502000-W00	X15U350-401000-W00
3600	X15U360-400000-000	X15U360-500000-000	X15U360-402000-W00	X15U360-502000-W00	X15U360-401000-W00
3700	X15U400-400000-000	X15U400-500000-000	X15U400-402000-W00	X15U400-502000-W00	X15U400-401000-W00
4000	X15U200-400000-000	X15U200-500000-000	X15U200-402000-W00	X15U200-502000-W00	X15U200-401000-W00

图 18 短升降油缸
Fig.18 Lift cylinder, Short

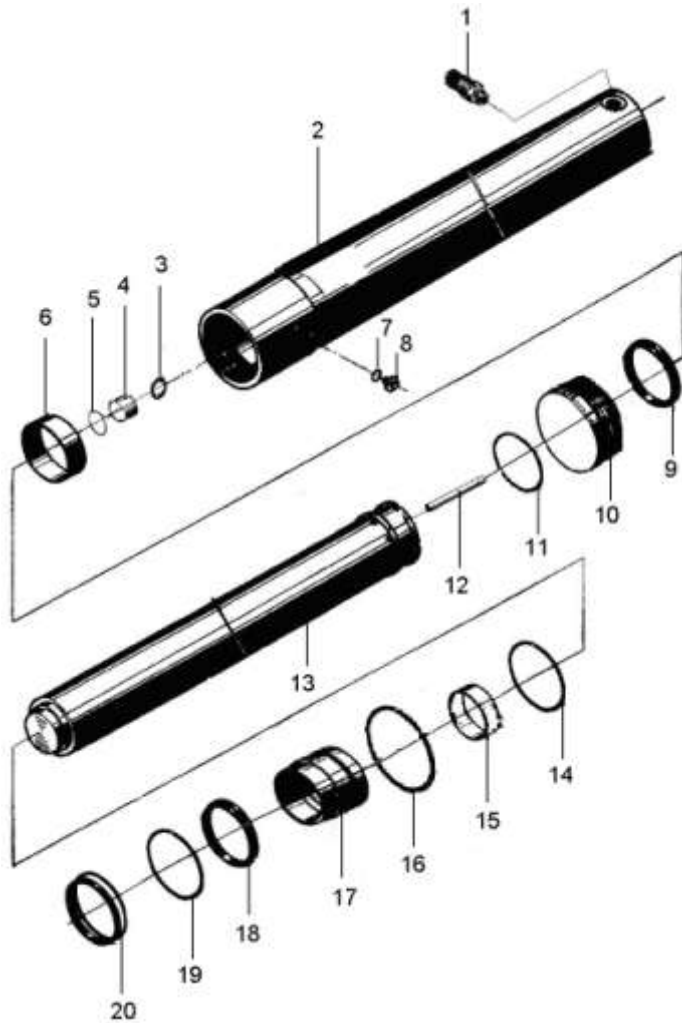
1.0t-1.8t 2级全自由门架, 3级全自由门架
1.0t-1.8t DUPLEX MAST , TRIPLEX MAST



序号 Item	物料码 Part NO.	名称 Description	数量 Qty	备注或适用车型 Remarks or Serial NO.
A1		短升降油缸 Lift cylinder,Short	1	SeeOP.Parts 11 2级全自由门架 DUPLEX
A1		短升降油缸 Lift cylinder,Short	1	See OP.Parts 11 3级全自由门架 TRIPLEX
1	RC25N450-802000-W00	安全阀 safety valve	1	
2		缸体 Cylinder body	1	SeeOP.Parts 11
3	G0893P1-000028-00	挡圈 28 Snap shim 28	1	
4	RC25N450-803000-W00	单向阀 check valve	1	
5	G001235-002602P4-00	O形密封圈 26×2.4 O-ring 26×2.4	1	
6	GW0019P1-G00	WR 抗磨环 75×65×20 Wear Ring 75×65×20	1	
7	J000982-000006-00	垫圈 6 Washer 6	1	
8	G000818-006008-00	螺钉 M6×8 Bolt M6×8	1	
9	PT0300700-T46-G00	格莱圈 D70 greggains circle D70	1	
10	X15N450-800004-W00	活塞 Piston	1	
11	RC25N450-800005-W00	钢丝挡圈 φ3 wire ringφ3	1	
12	RC25N450-800006-W00	钢管 steel tube	1	
13		活塞杆 Piston rod	1	SeeOP.Parts 11

图 18 短升降油缸
Fig.18 Lift cylinder, Short

1.0t-1.8t 2级全自由门架, 3级全自由门架
1.0t-1.8t DUPLEX MAST , TRIPLEX MAST



序号 Item	物料码 Part NO.	名称 Description	数量 Qty	备注或适用车型 Remarks or Serial NO.
14	G001235-007003P1-00	O 形密封圈 70×3.1 O-ring 70×3.1	1	
15	X15N450-800008-G00	复合衬套 composite bushing	1	
16	G001235-007503P1-00	O 形密封圈 75×3.1 O-ring 75×3.1	1	
17	X15N450-800003-W00	缸盖 Cap	1	
18	FU0694K0-G00	ISI 密封圈 d55 ISI-seal ring d55	1	
19	X15N450-800002-W00	保护圈 70×60×2 protection ring 70×60×2	1	
20	CL0104C0-G00	LBH 防尘圈 d55 LBH-dustproof ring d55	1	
K1	X15N450-8-000-Kit	短缸修理包 Lift cylinder-KIT	1	For (1-1.8t): INC:5,9,14,16,18,20

选配表 11 <Optional Parts List 11>

序号 Item	A1	2	13
起升高度 Lift Height	物料码 Part NO.	物料码 Part NO.	物料码 Part NO.
2 级全自由门架 DUPLEX MAST			
2000	X15U200-800000-000	X15U200-801000-W00	X15U200-800001-W00
2500	X15U250-800000-000	X15U250-801000-W00	X15U250-800001-W00
2700	X15U270-800000-000	X15U270-801000-W00	X15U270-800001-W00
3000	X15N450-800000-000	X15N450-801000-W00	X15N450-800001-W00
3300	X15U330-800000-000	X15U330-801000-W00	X15U330-800001-W00
3500	X15U350-800000-000	X15U350-801000-W00	X15U350-800001-W00
3600	X15U360-800000-000	X15U360-801000-W00	X15U360-800001-W00
3700	X15U370-800000-000	X15U370-801000-W00	X15U370-800001-W00
4000	X15U400-800000-000	X15U400-801000-W00	X15U400-800001-W00
3 级全自由门架 TRIPLEX MAST			
4000	X15N400-800000-000	X15N400-801000-W00	X15N400-800001-000
4300	X15N430-800000-000	X15N430-801000-W00	X15N430-800001-000
4500	X15N450-800000-000	X15N450-801000-W00	X15N450-800001-W00
4700	X15N470-800000-000	X15N470-801000-W00	X15N470-800001-000
4800	X15N480-800000-000	X15N480-801000-W00	X15N480-800001-000
5000	X15N500-800000-000	X15N500-801000-W00	X15N500-800001-000
5500	X15N550-800000-000	X15N550-801000-W00	X15N550-800001-000
6000	X15N600-800000-000	X15N600-801000-W00	X15N600-800001-000
6500	X15N650-800000-000	X15N650-801000-W00	X15N650-800001-000
7000	X15N700-800000-000	X15N700-801000-W00	X15N700-800001-000

图 19 油路系统
Fig.19 Mast piping

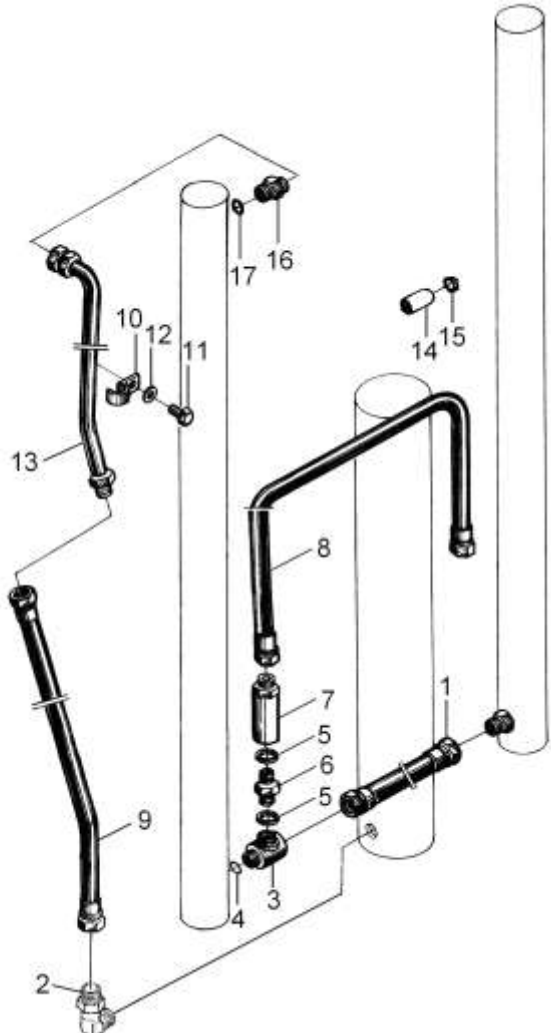
1.0t-1.8t 2级全自由门架 DUPLEX MAST

序号 Item	物料码 Part NO.	名称 Description	数量 Qty	备注或适用车型 Remarks or Serial NO.
1	X15M300-700002-00	胶管接头 Oil pipe assy	1	
2	RC25N450-201000-000	90° 管接头 Elbow	1	
3	RC25U300-704000-000	三通接头 Connector	1	
4	G001235-002002P4-00	O 形密封圈 20×2.4 O-ring 20×2.4	1	
5	G001235-002402P4-00	O 形密封圈 24×2.4 O-ring 24×2.4	2	
6	RC25U300-700002-000	直通管接头 Nipple	1	
7	XSF2-F16L-1.5/40-G00	单向限速阀 Speed limiting valve	1	
8	X25M300-701000-000	油管总成 Oil pipe assy	1	F, B 变速箱配, 标配 F, B transmission, Standard
8	X25M300-701000-500	油管总成 Oil pipe assy	1	F, B transmission 液压带感知系统功能 Hydraulic with Sensing System function
8	X25M300-701000-010	油管总成 Oil pipe assy	1	MS变速箱配 MS transmission
9		胶管接头 Oil pipe assy	1	SeeOP.Parts 12
10	1.5U3H-600001	管夹 Clip	1	
11	N30M300-003000-000	螺栓 M8×1.25×16 Bolt M8×1.25×16	1	

图 19 油路系统
Fig.19 Mast piping

1.0t-1.8t 2级全自由门架 DUPLEX MAST

序号 Item	物料码 Part NO.	名称 Description	数量 Qty	备注或适用车型 Remarks or Serial NO.
12	G0097P1-000006-00	垫圈 8 Washer 8	3	
13		钢油管 Oil pipe	1	SeeOP.Parts 12
14	N30U300-700007-000	堵塞 Plug	1	
15	2.5U3H-601000A	双钢丝环箍 18 Clamp 18	1	
16	2.5U3H-600006A	直通管接头 Nipple	1	
17	J000982-000018-00	垫圈 18 Washer 18	1	
-				



选配表 12 <Optional Parts List 12>

序号 Item	9	13
起升高度 Lift Height	物料码 Part No	物料码 Part No
2000	RC25U200-700001-000	X15U200-701000-000
2500	RC25U250-700001-000	X15U250-701000-000
2700	RC25U250-700001-000	X15U270-701000-000
3000	RC25U300-700001-000	X15U300-701000-000
3300	RC25U300-700001-000	X15U330-701000-000
3500	RC25U300-700001-000	X15U350-701000-000
3600	RC25U300-700001-000	X15U360-701000-000
3700	RC25U300-700001-000	X15U370-701000-000
4000	RC25U300-700001-000	X15U400-701000-000

图 20 侧移油路
Fig.20 lateral moving circuit

1.0t-1.8t 2级全自由门架 DUPLEX MAST

序号 Item	物料码 Part NO.	名称 Description	数量 Qty	备注或适用车型 Remarks or Serial NO.
A1		侧移油路 lateral moving circuit	1	SeeOP.Parts 13
1	X15V450-900001-000	螺钉 Screw	4	
2	G000093-000010-00	垫圈 10 Washer 10	8	
3	RC25V450-900013-000	油管护板 Tubing shield	4	
4	G006170-000014-00	螺母 M14 Nut M14	1	
5	G000093-000014-00	垫圈 14 Washer 14	1	
6	J25B300-900005-000	垫圈 Washer	1	
7	X15V450-900016-000	套 cover	1	
8	X15V450-900007-000	滑轮轴 pulley shaft	1	
9	X15V450-900014-000	滑轮 pulley	1	
10	X15V450-904000-000	支架 Bracket	1	
11		胶管接头 Hose	1	SeeOP.Parts 13
12		胶管接头 Hose	1	SeeOP.Parts 13
13	JISB2401-P11-G00	O形密封圈 P11 O-ring P11	1	

备注：安装第四联油路时，序号 11、12、25 取消，序号 28 数量为 2。
Note: the installation of the fourth page oil routes,item 11,12,25 cancel, item 28, Qty:2.

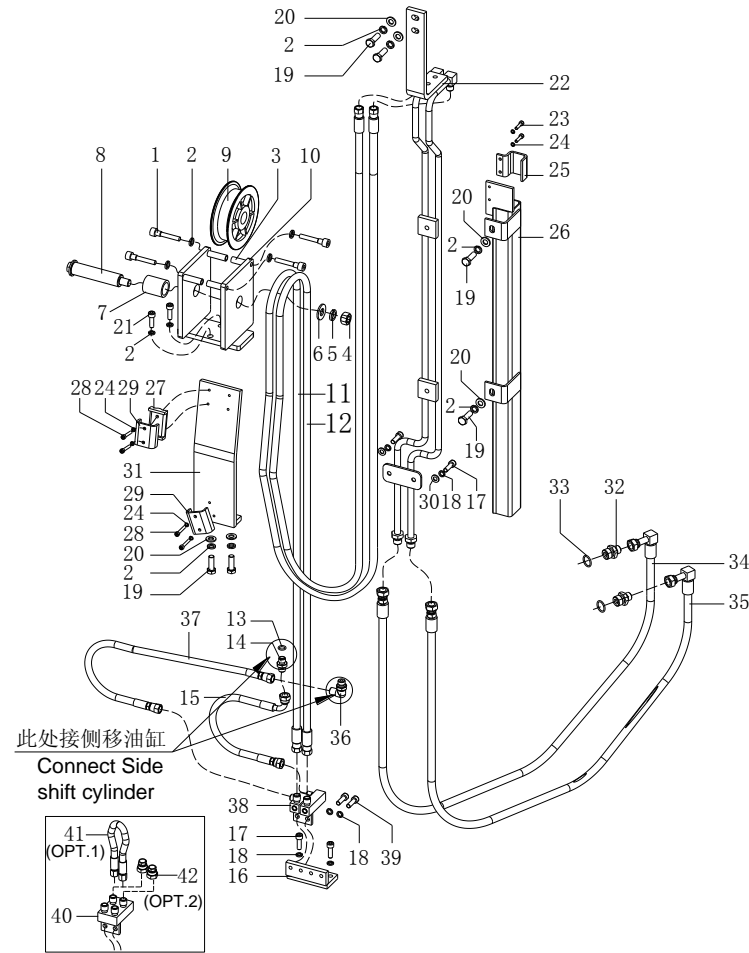


图 20 侧移油路
Fig.20 lateral moving circuit

1.0t-1.8t 2级全自由门架 DUPLEX MAST

序号 Item	物料码 Part NO.	名称 Description	数量 Qty	备注或适用车型 Remarks or Serial NO.
14	S16B300-900011-000	直通接头 Connector	1	
15	X25V450-900004-001	胶管总成 Hose	1	内置式 Built-in
16	X15V450-905000-000	固定支座 fixed bearing	1	
17	G000070-008025-00	螺钉 M8x25 Screw M8x25	4	
18	G000093-000008-00	垫圈 8 Washer 8	6	
19	G005783-010030-00	螺栓 M10x30 Bolt M10x30	12	
20	G0097P1-000010-00	垫圈 10 Washer 10	16	
21	N35M300-004000-000	螺栓 M10x1.25x20 Bolt M10x1.25x20	2	
22		钢油管 Oil pipe assy	1	SeeOP.Parts 13
23	G000070-005020-00	螺钉 M5x20 Screw M5x20	2	
24	G000093-000005-00	垫圈 5 Washer 5	6	
25	RC25C300-900001-000	管夹 tube folder	1	
26		外门架滑导 slider	1	SeeOP.Parts 13
27	RC25V450-900018-000	橡胶垫 rubber pad	1	

备注：安装第四联油路时，序号 11、12、25 取消，序号 28 数量为 2。
Note: the installation of the fourth page oil routes, item 11,12,25 cancel, item 28, Qty:2.

图 20 侧移油路
Fig.20 lateral moving circuit

1.0t-1.8t 2级全自由门架 DUPLEX MAST

序号 Item	物料码 Part NO.	名称 Description	数量 Qty	备注或适用车型 Remarks or Serial NO.
28	G000070-005030-00	螺钉 M5×30 Screw M5×30	4	
29	RC25V450-900017-000	管夹 tube folder	2	
30	G0097P1-000008-00	垫圈 8 Washer 8	2	
31	X15C300-904000-000	固定支座 fixed bearing	1	改进 improvement
32	RC25V450-900006-000	直通接头 Connector	2	
33	G001235-002202P4-00	O形密封圈 22×2.4 O-ring 22×2.4	2	
34	X25V450-800001-001	胶管接头 hose connector	1	
35	X25V450-800002-001	胶管接头 hose connector	1	
36	N163-620800-000	90°管接头 Elbow	1	
37	X25V450-900005-001	胶管总成 Hose	1	内置式 Built-in
38	X15V450-907000-000	接头支座 Joint bearing	1	内置式, Built-in
38	X15V450-907000-000	接头支座 Joint bearing	1	≤2012-12 非内置式 Non-built-in
39	G000070-008020-00	螺钉 M8×20 Screw M8×20	2	
40	X15V450-808000-000	接头支座 Joint bearing	1	≥2012-12,非内置式 Non-built-in

备注：安装第四联油路时，序号 11、12、25 取消，序号 28 数量为 2。
Note: the installation of the fourth page oil routes, item 11,12,25 cancel, item 28, Qty:2.

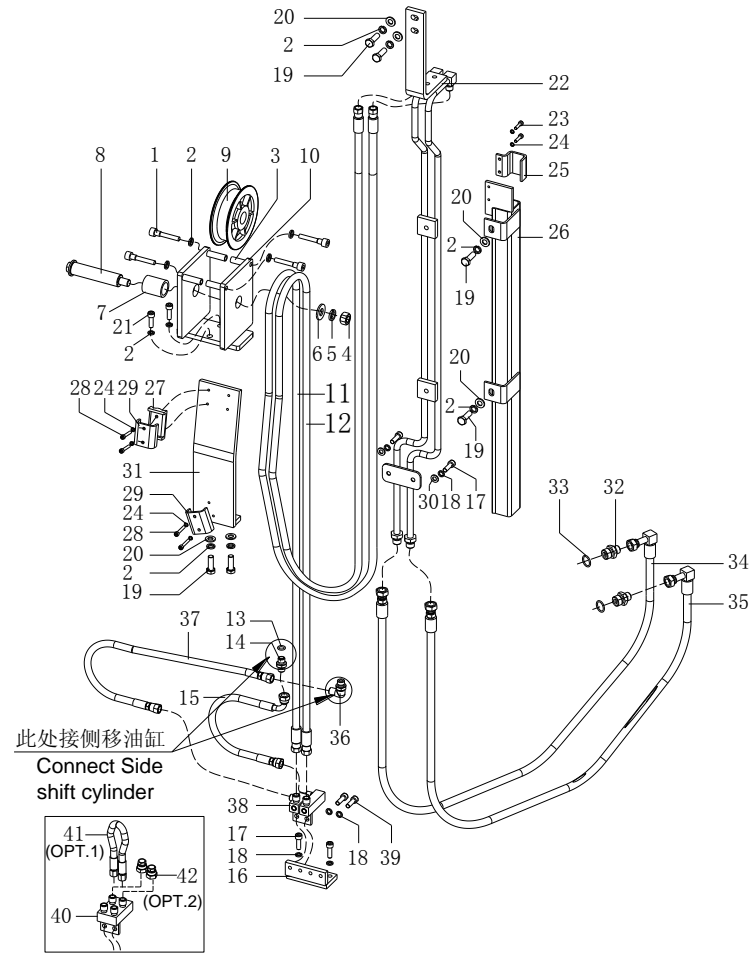
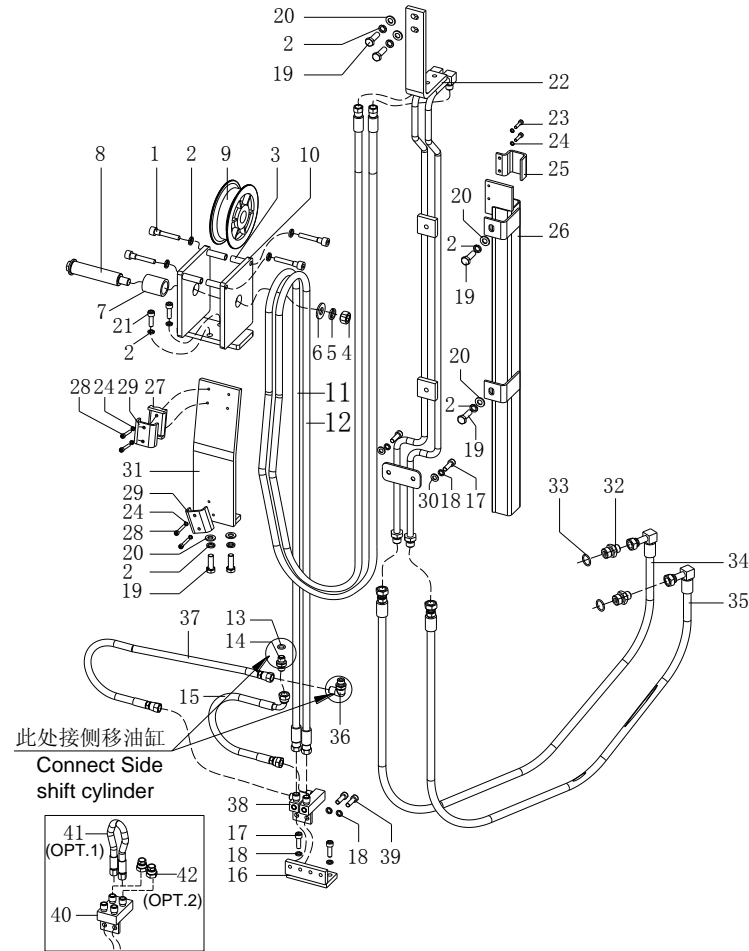


图 20 侧移油路
Fig.20 lateral moving circuit

1.0t-1.8t 2级全自由门架 DUPLEX MAST



序号 Item	物料码 Part NO.	名称 Description	数量 Qty	备注或适用车型 Remarks or Serial NO.
41	6IK-200G1/4	胶管总成(选装 1) Hose(OPT.1)	1	非内置式, 不带属具 Non-built-in Block the joint when without attachment
42	RC25V450-805000-000	阀盖(选装 2) Cover(OPT.2)	2	非内置式, 不带属具 Non-built-in Block the joint when without attachment

备注: 安装第四联油路时, 序号 11、12、25 取消, 序号 28 数量为 2。
Note: the installation of the fourth page oil routes, item 11, 12, 25 cancel, item 28, Qty: 2.

选配表 13 <Optional Parts List 13>

序号 Item	A1	11	12	22	26
起升高度 Lift Height	物料码 Part NO.	物料码 Part NO.	物料码 Part NO.	物料码 Part NO.	物料码 Part NO.
2000	X15C200-900000-000	X15C200-905000-000	X15C200-906000-000	X15C200-903000-000	X15C200-902000-000
2500	X15C250-900000-000	X15C250-905000-000	X15C250-906000-000	X15C250-903000-000	X15C250-902000-000
2700	X15C270-900000-000	X15C270-905000-000	X15C270-906000-000	X15C270-903000-000	X15C270-902000-000
3000	X15C300-900000-000	X15C300-905000-000	X15C300-906000-000	X15C300-903000-000	X15C300-902000-000
3300	X15C330-900000-000	X15C330-905000-000	X15C330-906000-000	X15C330-903000-000	X15C330-902000-000
3500	X15C350-900000-000	X15C350-905000-000	X15C350-906000-000	X15C350-903000-000	X15C350-902000-000
3600	X15C360-900000-000	X15C360-905000-000	X15C360-906000-000	X15C360-903000-000	X15C360-902000-000
3700	X15C370-900000-000	X15C370-905000-000	X15C370-906000-000	X15C370-903000-000	X15C370-902000-000
4000	X15C400-900000-000	X15C400-900000-000	X15C400-906000-000	X15C400-903000-000	X15C400-902000-000

图 21 第四联油路

Fig.21 Fourth oil

1.0t-1.8t 2级全自由门架 DUPLEX MAST

序号 Item	物料码 Part NO.	名称 Description	数量 Qty	备注或适用车型 Remarks or Serial NO.
A1		第四联油路 The fourth joint oil pipeline	1	See OP.Parts 14
1	X15V450-900014-000	滑轮 pulley	1	
2		胶管接头 Hose connector	1	See OP.Parts 14
3		胶管接头 hose connector	1	See OP.Parts 14
4	GT-3001-G00	通用尼龙扎带 General cable tie	3	
5	G005783-010030-00	螺栓 M10×30 Bolt M10×30	3	
6	G000093-000010-00	垫圈 10 Washer 10	3	
7	G0097P1-000010-00	垫圈 10 Washer 10	3	
8	X15C300-808000-000	钢油管 Oil pipe assy	1	
9	RC25C300-800003-000	管夹 tube folder	1	
10	RC25V450-900018-000	橡胶垫 rubber pad	1	
11	G000070-005030-00	螺钉 M5×30 Screw M5×30	2	
12	G000093-000005-00	垫圈 5 Washer 5	2	
13	RC25V450-900017-000	管夹 tube folder	2	
14	G000070-005050-00	螺钉 M5×50 Screw M5×50	2	

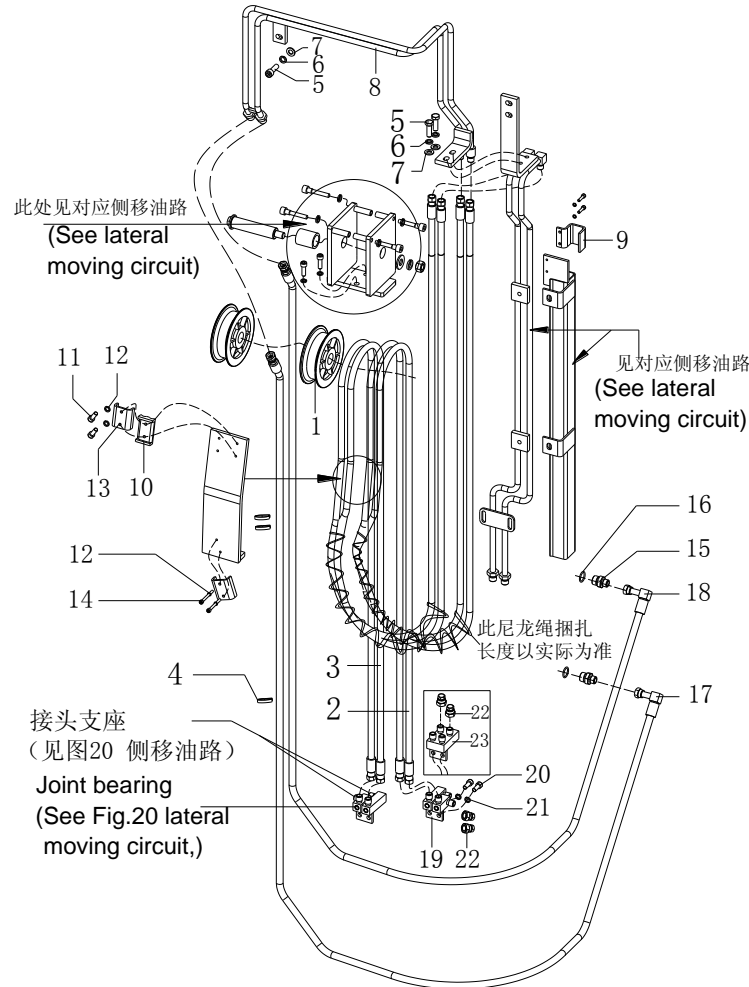
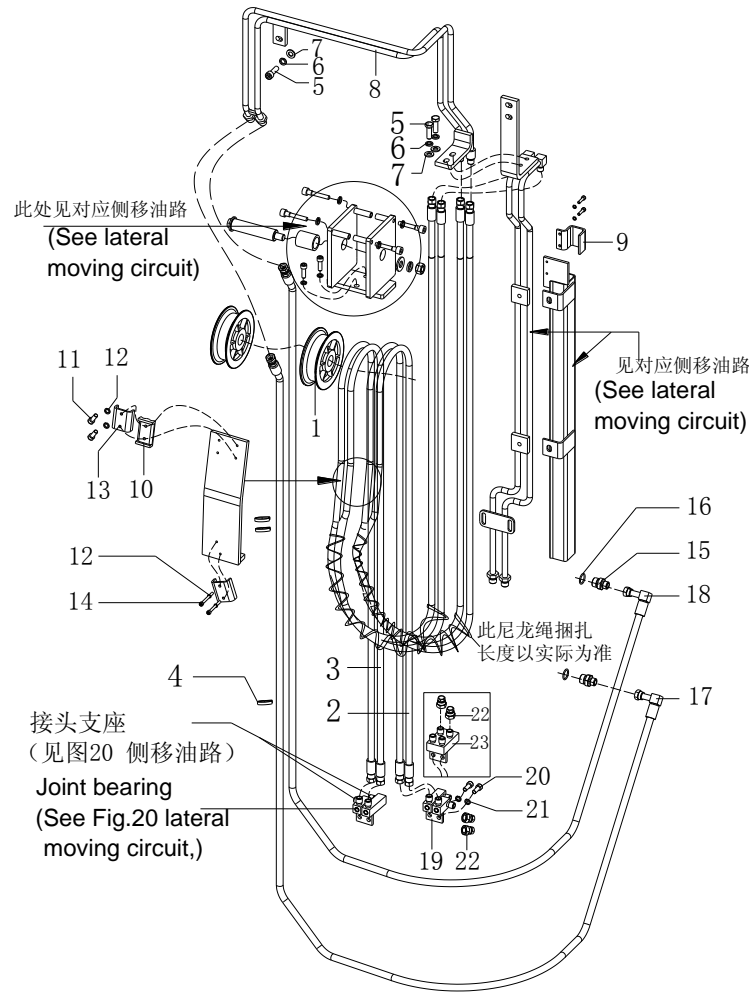


图 21 第四联油路

Fig.21 Fourth oil

1.0t-1.8t 2级全自由门架 DUPLEX MAST



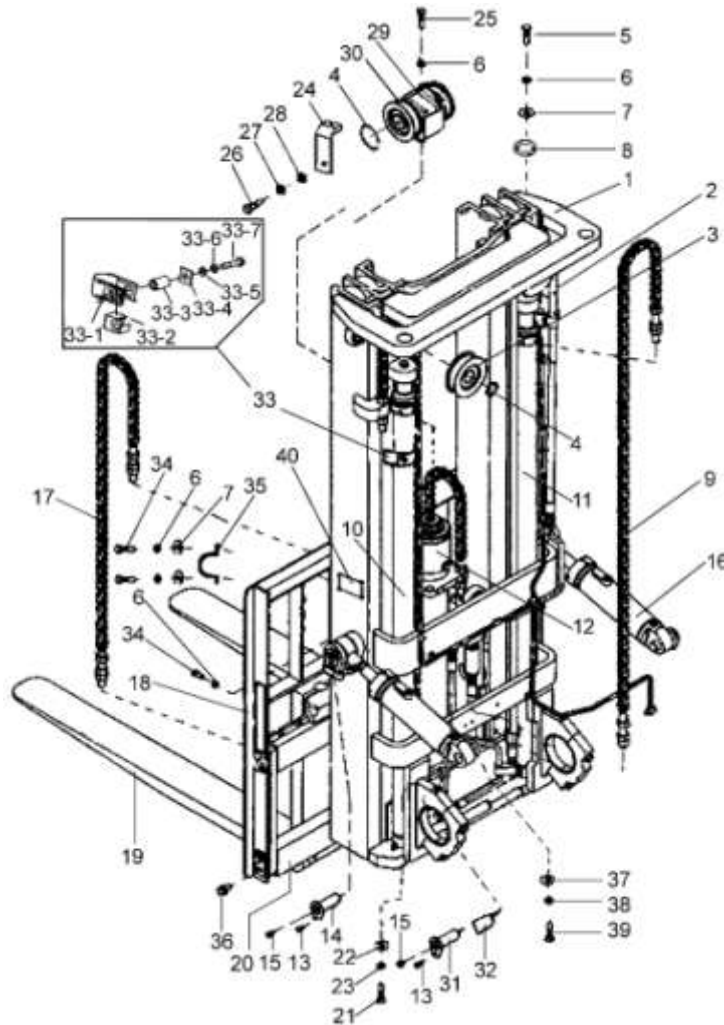
序号 Item	物料码 Part NO.	名称 Description	数量 Qty	备注或适用车型 Remarks or Serial NO.
15	RC25V450-900006-000	直通过接头 Connector	2	
16	G001235-002202P4-00	O形密封圈 22x2.4 O-ring 22x2.4	2	
17		胶管接头 hose connector	1	See OP.Parts 14
18		胶管接头 hose connector	1	See OP.Parts 14
19	X15V450-807000-000	接头支座 joint bearing	1	内置式, Built-in
19	X15V450-807000-000	接头支座 Joint bearing	1	≤2012-12 非内置式 Non-built-in
20	G000070-008020-00	螺钉 M8x20 Screw M8x20	2	
21	G000093-000008-00	垫圈 8 Washer 8	2	
22	RC25V450-805000-000	闷盖 cover	2	
23	X15V450-808000-000	接头支座 Joint bearing	1	≥2012-12,非内置式 Non-built-in

选配表 14 <Optional Parts List 14>

序号 Item	A1	2	3	17	18
起升高度 Lift Height	物料码 Part NO.	物料码 Part NO.	物料码 Part NO.	物料码 Part NO.	物料码 Part NO.
2000	X15C200-800000-000	X15C200-805000-000	X15C200-806000-000	X15C200-800001-000	X15C200-800002-000
2500	X15C250-800000-000	X15C250-805000-000	X15C250-806000-000	X15C250-800001-000	X15C250-800002-000
2700	X15C270-800000-000	X15C270-805000-000	X15C270-806000-000	X15C270-800001-000	X15C270-800002-000
3000	X15C300-800000-000	X25C300-805000-000	X25C300-806000-000	X25C300-800001-000	X25C300-800002-000
3300	X15C330-800000-000	X15C330-805000-000	X15C330-806000-000	X15C330-800001-000	X15C330-800002-000
3500	X15C350-800000-000	X15C350-805000-000	X15C350-806000-000	X15C350-800001-000	X15C350-800002-000
3600	X15C360-800000-000	X15C360-805000-000	X15C360-806000-000	X15C360-800001-000	X15C360-800002-000
3700	X15C370-800000-000	X15C370-805000-000	X15C370-806000-000	X15C370-800001-000	X15C370-800002-000
4000	X15C400-800000-000	X15C400-805000-000	X15C400-806000-000	X15C400-800001-000	X15C400-800002-000

图 22 起升组件
Fig.22 Lifting part

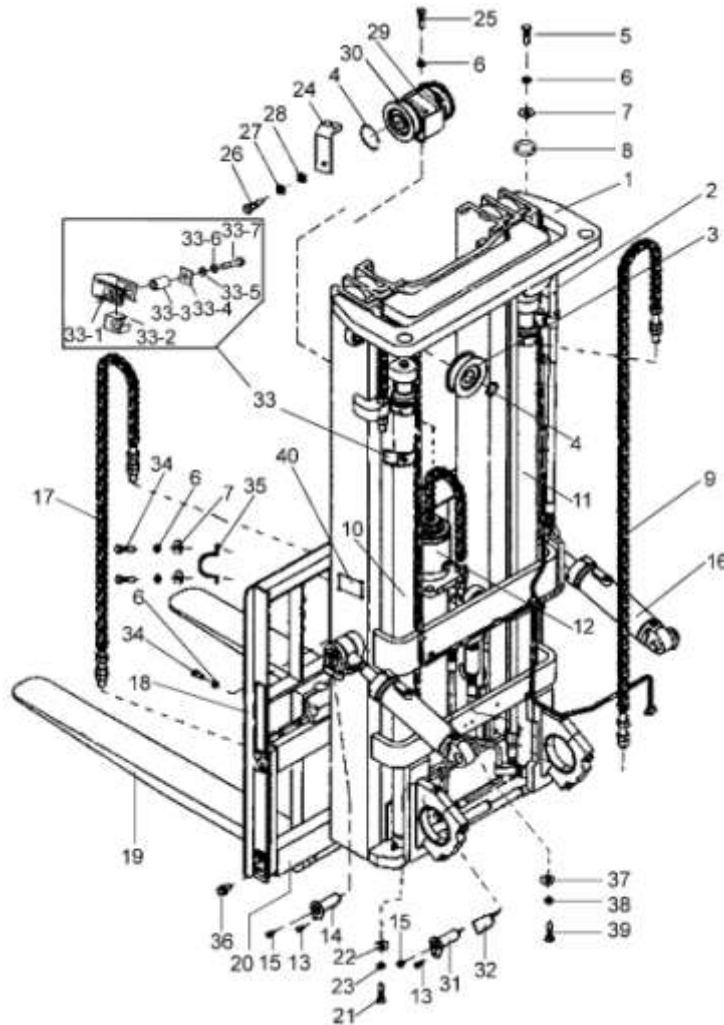
1t-1.8t 3级全自由门架 TRIPLEX MAST



序号 Item	物料码 Part NO.	名称 Description	数量 Qty	备注或适用车型 Remarks or Serial NO.
1		门架 Mast	1	See Fig.24
2	X15N450-200000-000	油路系统 Mast piping	1	
3	780708-G00	链轮 Chain wheel	2	
4	G0894P1-000040-00	挡圈 40 Washer 40	4	
5	G005786-012040-00	螺栓 M12×1.25×40 Bolt M12×1.25×40	2	
6	G000093-000012-00	垫圈 12 Washer 12	6	
7	G0097P1-000012-00	垫圈 12 Washer 12	4	
8	N30M300-000012-000	油缸调整垫圈 Ajust gasket	2 组	
9		链条总成 Chain assy	2	See Fig.23 1t-1.5t 左右油缸 Lift cylinder,R/L
9		链条总成 Chain assy	2	See Fig.23 1.8t 左右油缸 Lift cylinder,R/L
10		左升降油缸 Lift cylinder,Left	1	See Fig.27
11		右升降油缸 Lift cylinder,Right	1	See Fig.27
12		短升降油缸 Short cylinder	1	See Fig.18
13	N30M300-004000-000	螺栓 M10×1.25×20 Bolt M10×1.25×20	4	
14	X15M300-002000-000	销轴 Pin shaft	2	

图 22 起升组件
Fig.22 Lifting part

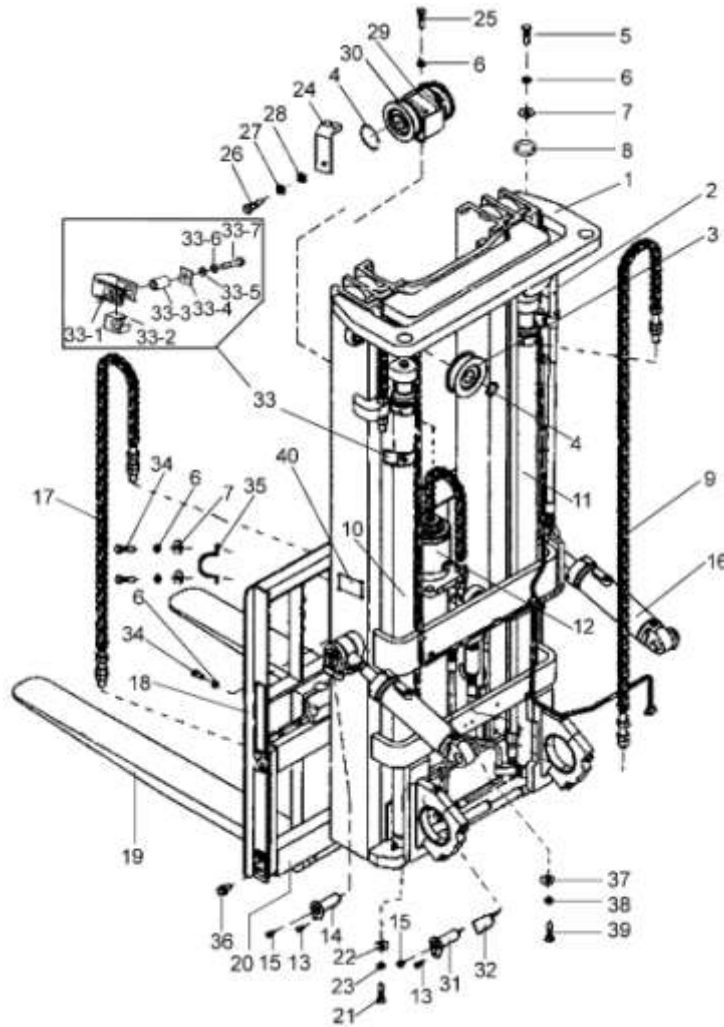
1t-1.8t 3级全自由门架 TRIPLEX MAST



序号 Item	物料码 Part NO.	名称 Description	数量 Qty	备注或适用车型 Remarks or Serial NO.
15	G001152-010001-00	油杯 M10×1 Oil cup M10×1	2	
16	X15N450-600000-000	倾斜油缸 Tilt cylinder	2	见图6 See Fig.6
17		链条总成 Chain assy	2	See Fig.23 1t-1.5t 短缸 Lifting cylinder,Short
17		链条总成 Chain assy	2	See Fig.23 1.8t 短缸 Lifting cylinder,Short
18	N15M300-020000-002	挡货架 Load bracket	1	
19	N15M300-010000-000	货叉总成 Fork assembly	2	1t-1.8t
20		货叉架总成 Fork shelf assy	1	See Fig.25
20		侧移架总成 Side shifter assy	1	See Fig.26
21	G000070-008030-00	螺钉 M8×30 Screw M8×30	2	
22	G0097P1-000008-00	垫圈 8 Washer 8	2	
23	G000093-000008-00	垫圈 8 Washer 8	2	
24	X15N450-002000-000	链轮护板 sprocket guard	2	
25	G000070-012050-00	螺钉 M12×50 Screw M12×50	1	
26	G000070-014025-00	螺钉 M14×25 Screw M14×25	2	
27	G0097P1-000014-00	垫圈 14 Washer 14	2	

图 22 起升组件
Fig.22 Lifting part

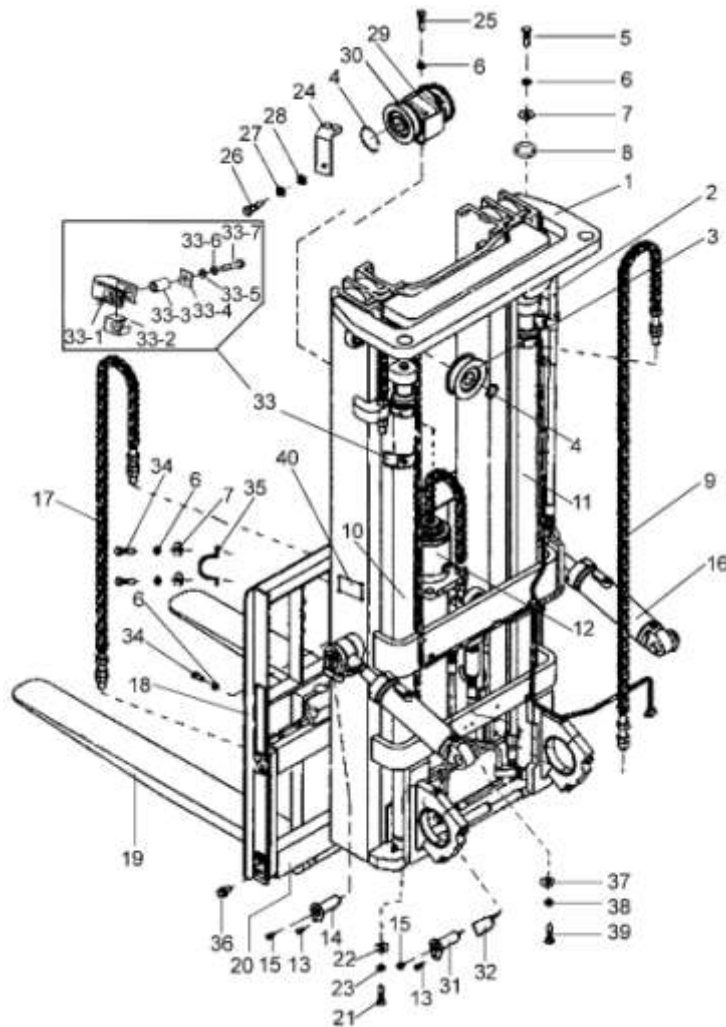
1t-1.8t 3级全自由门架 TRIPLEX MAST



序号 Item	物料码 Part NO.	名称 Description	数量 Qty	备注或适用车型 Remarks or Serial NO.
28	G000093-000014-00	垫圈 14 Washer 14	2	
29	X15N450-001000-000	链条座 Chain wheel sea	1	
30	780708F1-G00	链轮 Chain wheel	2	1t-1.5t
30	780708F-G00	链轮 Chain wheel	2	1.8t
31	X15M300-003000-000	销轴 Pin shaft	2	
32	X15M300-000001-W00	复合衬套 composite bushing	2	
33	X15M300-001000-000	油缸抱箍 Cylinder Hoop	2	1t-1.8t
33-1	X15M300-001100-000	围板组合件 Boarding module	1	
33-2	X15M300-001005-000	橡胶塞 Rubber plug	2	
33-3	X25M300-001004-000	无缝钢管 seamless steel tube	2	
33-4	X25M300-001003-000	垫块 cushion	2	
33-5	G000096-000012-00	垫圈 12 Washer 12	2	
33-6	G000093-000012-00	垫圈 12 Washer 12	2	
33-7	G005782-012080-00	螺栓 M12x80 Bolt M12x80	2	
34	G005782-012025-00	螺栓 M12x25 Bolt M12x25	2	

图 22 起升组件
Fig.22 Lifting part

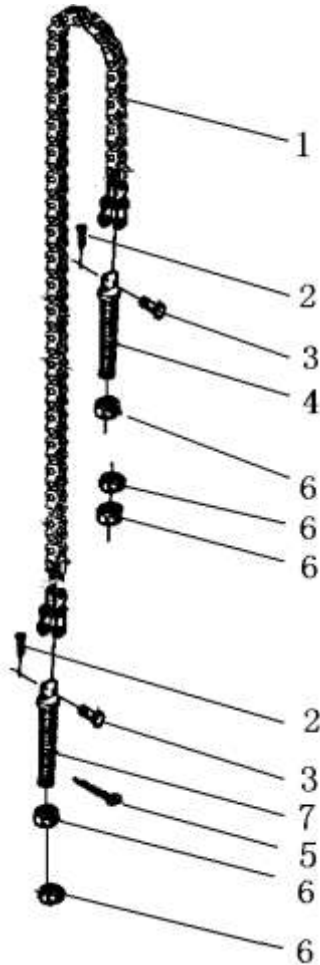
1t-1.8t 3级全自由门架 TRIPLEX MAST



序号 Item	物料码 Part NO.	名称 Description	数量 Qty	备注或适用车型 Remarks or Serial NO.
35	X15N450-000001-000	油缸固定板 fixed plate	4	
36	N30M300-006000-000	螺栓 M14×1.5×30 Bolt M14×1.5×30	4	
37	G000070-010035-00	螺钉 M10×35 Screw M10×35	2	
38	G0097P1-000010-00	垫圈 10 Washer 10	2	
39	G000093-000010-00	垫圈 10 Washer 10	2	
40	NO PART NO.	产品铭牌 signs	1	

图 23 链条总成
Fig.23 Chain assy

1.0t-1.8t 3级全自由门架 TRIPLEX MAST



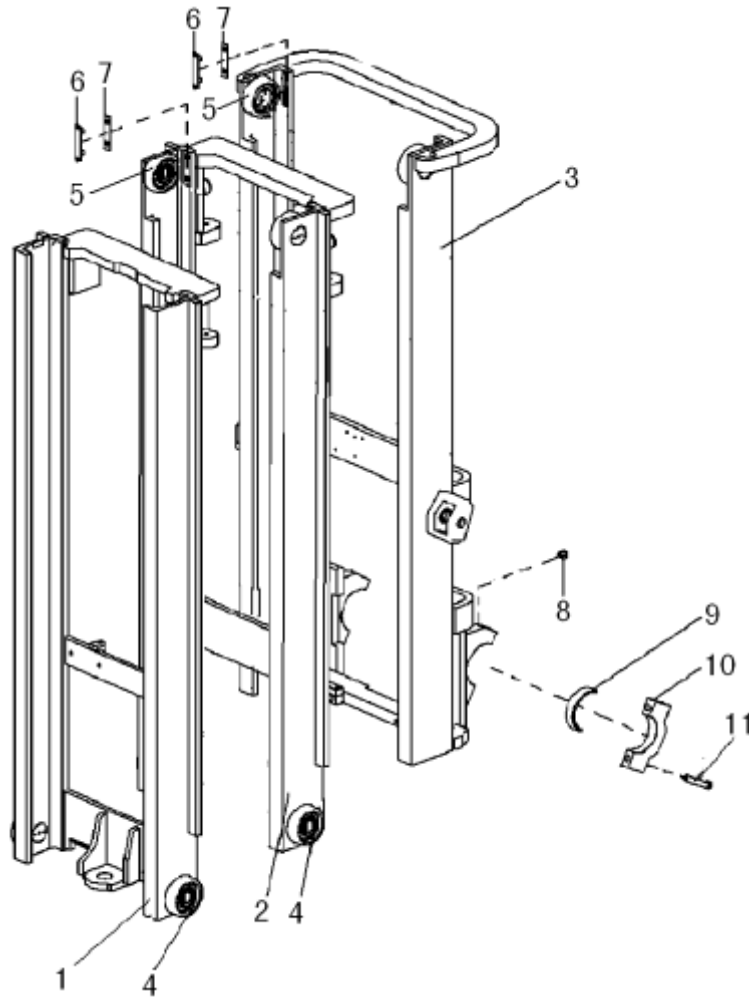
序号 Item	物料码 Part NO.	名称 Description	数量 Qty	备注或适用车型 Remarks or Serial NO.
A1		链条总成 Chain assy	2	See OP.Parts 15 左右油缸Lift cylinder,R/L
A2		链条总成 Chain assy	2	See OP.Parts 15 左右油缸Lift cylinder,R/L
1	NO PART NO.	板式链 LH1223xN Chain LH1223xN	1	左右升降油缸 Lifting cylinder,R/L
1	NO PART NO.	板式链 LH1223xN Chain LH1223xN	1	
A3		链条总成 Chain assy	2	See OP.Parts 15 短缸Lifting cylinder,Short
A4		链条总成 Chain assy	2	See OP.Parts 15 短缸Lifting cylinder,Short
1	NO PART NO.	板式链 LH1234xN Chain LH1234xN	1	短升降油缸 Lifting cylinder,Short
1	NO PART NO.	板式链 LH1234xN Chain LH1234xN	1	
2	G000091-004035-00	销 4x35 Pin 4x35	2	
3	NO PART NO.	销轴 Pin shaft	2	
4	NO PART NO.	链条接头 1 Connector 1	2	
5	RC25M300-030001-000	销 3.2x35 Pin 3.2x35	2	
6	G006171-000016-02	螺母 M16x1.5 Nut M16x1.5	5	
7	NO PART NO.	链条接头 2 Connector 2	2	

选配表 15 <Optional Parts List 15>

	左右升降油缸 Lifting cylinder,R/L		短升降油缸 Lifting cylinder,Short	
序号 Item	A1 (1t-1.5t)	A2 (1.8t)	A3 (1t-1.5t)	A4 (1.8t)
起升高度 Lift Height	物料码 Part NO.	物料码 Part NO.	物料码 Part NO.	物料码 Part NO.
4000	1.5M2.7H-002000	1.8M2.7H-002000	S16U270-040000-000	S18U270-040000-000
4300	1.5M3H-002000	R18M300-030000-000	R15M200-030000-000	R18M200-030000-000
4500	X15N450-030000-000	X18N450-030000-000	X15N450-040000-000	X18N450-040000-000
4700	S16N450-030000-000	S18N450-030000-000	S16N600-040000-000	S18N600-040000-000
4800	1.5M3.3H-002000	1.8M3.3H-002000	S16N600-040000-000	S18N600-040000-000
5000	N15M300-030000-000	N18M300-030000-000	X15N500-040000-000	X18N500-040000-000
5500	1.5M3.7H-002000	1.8M3.7H-002000	1.5M3H-002000	R18M300-030000-000
6000	N15M370-030000-000	N18M370-030000-000	1.5M3.3H-002000	1.8M3.3H-002000
6500	N15M400-030000-000	N18M400-030000-000	1.5M3.6H-002000	1.8M3.6H-002000
7000	X15N700-030000-000	X18N700-030000-000	X15N700-040000-000	X18M360-030000-000

图 24 门架
Fig.24 Mast

1.0t-1.8t 3级全自由门架 TRIPLEX MAST



序号 Item	物料码 Part NO.	名称 Description	数量 Qty	备注或适用车型 Remarks or Serial NO.
1		内门架 Inside mast	1	See OP.Parts 16
2		中门架 Middle mast	1	See OP.Parts 16
3		外门架 Out mast	1	See OP.Parts 16
4	760211A-G00	复合滚轮 $\Phi 113.2$ Complex roller $\Phi 113.2$	4	$\leq 2012-07$
4	X15M300-004000-G00	复合滚轮组 Complex roller assy	4	$\geq 2012-08$
5	760211B-G00	复合滚轮 $\Phi 112$ Complex rolle $\Phi 112$	4	$\leq 2012-07$
5	X15M300-004000-G00	复合滚轮组 Complex roller assy	4	$\geq 2012-08$
6	N30M300-000014-000	导轨衬垫 Washer	4	
7	N30M300-000015-000	调整垫片 Ajusting shim	4组	
8	G001152-010001-00	油杯 M10x1 Oil cup M10x1	2	
9	N15M300-000006-000	轴瓦 Axle bush	2	
10	N15M300-000005-002	轴承盖 Bearing cap	2	
11	N15M300-005000-000	螺栓 M14x1.5x45 Bolt M14x1.5x45	4	

选配表 16 <Optional Parts List 16>

序号 Item	1 ≤2012-07	1 ≥2012-08	2 -2012.07	2 ≥2012-08	3 ≤2012-07	3 ≥2012-08
起升高度 Lift Height	物料码 Part NO.	物料码 Part NO.	物料码 Part NO.	物料码 Part NO.	物料码 Part NO.	物料码 Part NO.
4000	X15N400-102000-000	X15N400-102000-001	X15N400-103000-000	X15N400-103000-001	X15N400-101000-000	X15N400-101000-001
4300	X15N430-102000-000	X15N430-102000-001	X15N430-103000-000	X15N430-103000-001	X15N430-101000-000	X15N430-101000-001
4500	X15N450-102000-000	X15N450-102000-001	X15N450-103000-000	X15N450-103000-001	X15N450-101000-000	X15N450-101000-001
4700	X15N470-102000-000	X15N470-102000-001	X15N470-103000-000	X15N470-103000-001	X15N470-101000-000	X15N470-101000-001
4800	X15N480-102000-000	X15N480-102000-001	X15N480-103000-000	X15N480-103000-001	X15N480-101000-000	X15N480-101000-001
5000	X15N500-102000-000	X15N500-102000-001	X15N500-103000-000	X15N500-103000-001	X15N500-101000-000	X15N500-101000-001
5500	X15N550-102000-000	X15N550-102000-001	X15N550-103000-000	X15N550-103000-001	X15N550-101000-000	X15N550-101000-001
6000	X15N600-102000-000	X15N600-102000-001	X15N600-103000-000	X15N600-103000-001	X15N600-101000-000	X15N600-101000-001
6500	X15N650-102000-000	X15N650-102000-001	X15N650-103000-000	X15N650-103000-001	X15N650-101000-000	X15N650-101000-001
7000	X15N700-102000-000	X15N700-102000-001	X15N700-103000-000	X15N700-103000-001	X15N700-101000-000	X15N700-101000-001

图 25 货叉架总成
Fig.25 Fork shelf assy

1.0t-1.8t 3级全自由门架 TRIPLEX MAST

序号 Item	物料码 Part NO.	名称 Description	数量 Qty	备注或适用车型 Remarks or Serial NO.
A1	X15N450-300000-000	货叉架总成 Fork shelf assy	1	1t-1.5t, INC:1-8 ≤2012-07
A1	X15N450-300000-001	货叉架总成 Fork shelf assy		1t-1.5t, INC:1-8 ≥2012-08
A2	X18N450-300000-000	货叉架总成 Fork shelf assy	1	1.8t, INC:1-8, ≤2012-07
A2	S16N450-300000-001	货叉架总成 Fork shelf assy	1	1.8t, INC:1-8, ≥2012-08 X18N450-300000-001
1	760211A-G00	复合滚轮 Φ113.2 Complex rolle Φ113.2	4	≤2012-07
1	X15M300-004000-G00	复合滚轮组 Complex rolle assy	4	≥2012-08
2	X15N450-301000-001	货叉架 Fork carriage	1	1t-1.5t, X15N450-301000-000
2	S16N450-301000-001	货叉架 Fork carriage	1	1.8t, X18N450-301000-000 X18N450-301000-001
A2	X15M300-304000-000	侧滚轮组 Side roller assy	2	包含/INC:3-8
3	80605K-G00	侧向滚轮 25×70×17 Cross roller 25×70×17	2	
4	1.5M3H-300001	侧滚轮轴 Side roller shaft	2	
5	G0894P1-000025-00	挡圈 25 Snap ring 25	4	
6	3U3A-100002	调整垫片 Ajusing shim	4 组	N15M300-300002-001

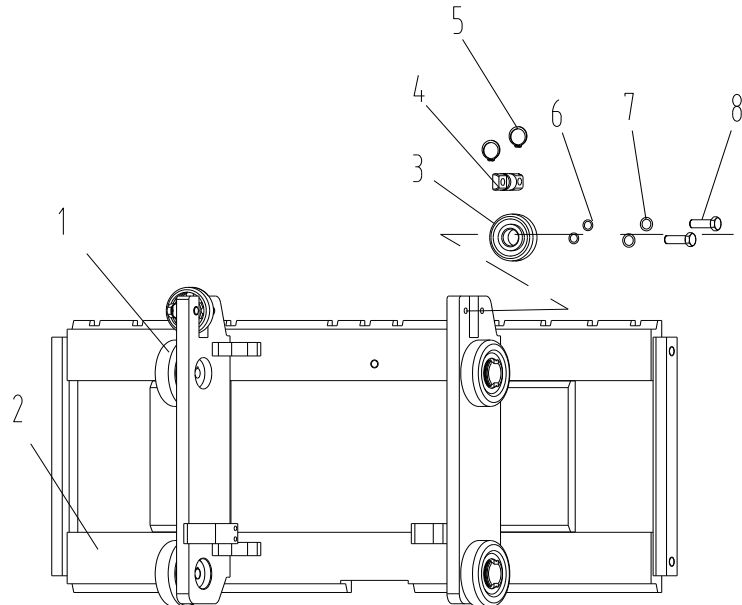


图 25 货叉架总成
Fig.25 Fork shelf assy

1.0t-1.8t 3级全自由门架 TRIPLEX MAST

序号 Item	物料码 Part NO.	名称 Description	数量 Qty	备注或适用车型 Remarks or Serial NO.
7	G000093-000012-00	垫圈 12 Washer 12	4	
8	G005782-012040-00	螺栓 M12x40 Bolt M12x40	4	

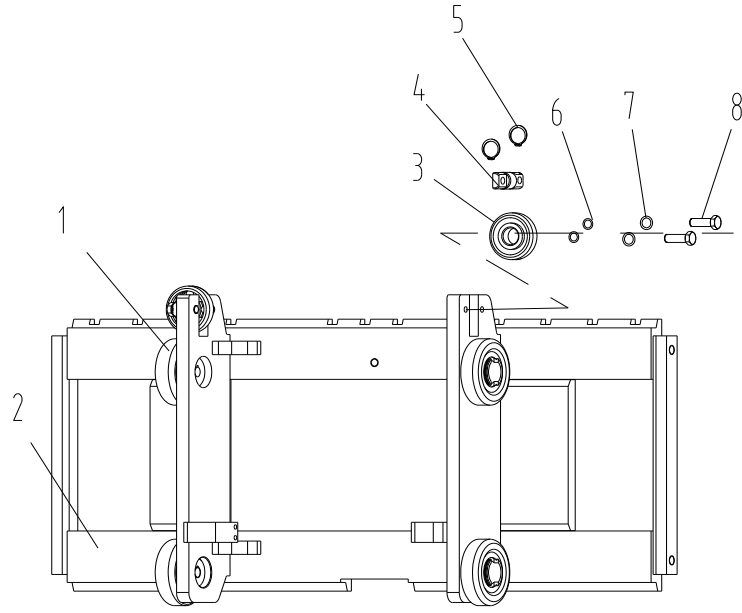
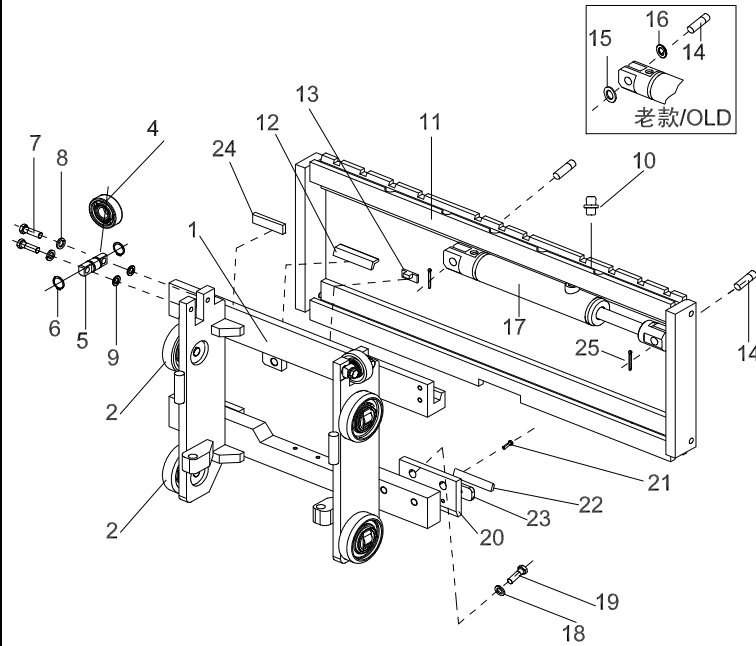


图 26 侧移架总成
Fig.26 Side shifter assy

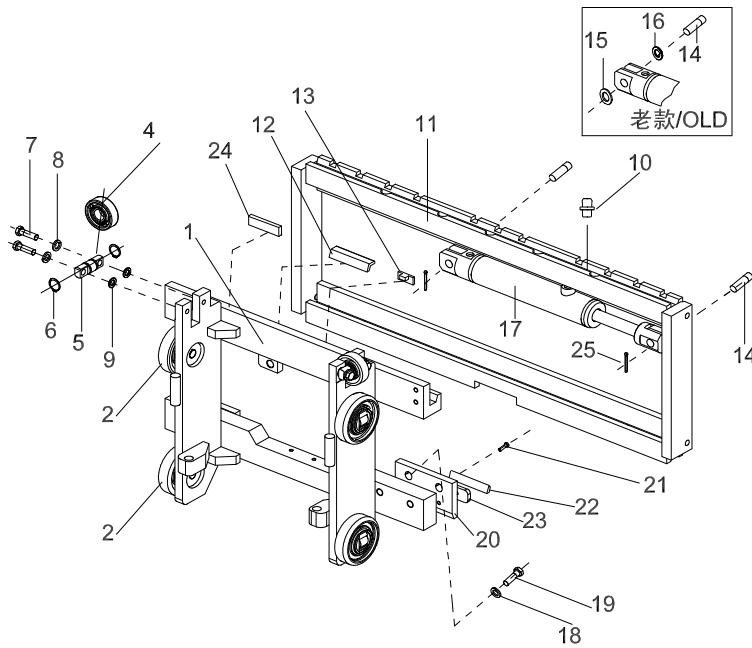
1.0t-1.8t 3级全自由门架 TRIPLEX MAST



序号 Item	物料码 Part NO.	名称 Description	数量 Qty	备注或适用车型 Remarks or Serial NO.
A1	X15V450-300000-000	侧移架总成 Side shifter assy	1	≤2012-07
A1	S16V450-300000-001	侧移架总成 Side shifter assy	1	≥2012-08 X15V450-300000-001
1	S16V450-301000-001	叉架体 Fork carriage	1	X15V450-301000-000 X15V450-301000-001
2	760211A-G00	复合滚轮组 Complex rolle	4	≤2012-07
2	X15M300-004000-G00	复合滚轮组 Complex rolle assy	4	≥2012-08
A3	X15M300-304000-000	侧滚轮组 Side roller assy	2	包含/INC:4-9
4	80605K-G00	侧向滚轮 25×70×17 Side rolle 25×70×17	2	
5	1.5M3H-300001	侧滚轮轴 Side rolle shaft	2	
6	G0894P1-000025-00	挡圈 25 Snap ring 25	4	
7	G005782-012040-00	螺栓 M12×40 Bolt M12×40	4	
8	G000093-000012-00	垫圈 12 Washer 12	2	
9	3U3A-100002	调整垫片 adjustment pads	4	
10	G001152-006000-00	油杯 M6 Oil cup M6	5	
11	S16V450-302000-000	侧移货叉架 Sidesway Fork carriage	1	

图 26 侧移架总成
Fig.26 Side shifter assy

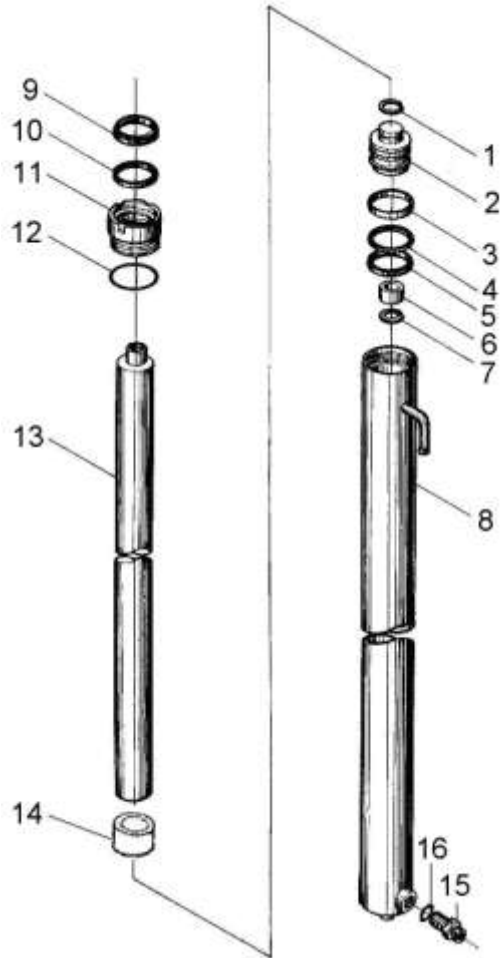
1.0t-1.8t 3级全自由门架 TRIPLEX MAST



序号 Item	物料码 Part NO.	名称 Description	数量 Qty	备注或适用车型 Remarks or Serial NO.
12	S16V450-300001-000	塞铁 Plug	3	
13	1.4QS1-000006	挡块 Block	2	
14	S16V450-300005-000	轴 Shaft	2	OLD
14	S16V450-300005-001	轴 Shaft	2	NEW
15	G0894P1-000016-00	挡圈 16 Snap ring 16	4	OLD
16	G0097P1-000016-00	垫圈 16 Washer 16	2	OLD
17	S16V450-303000-000	侧移油缸 Sidesway cylinder	1	
18	G000093-000016-00	垫圈 16 Washer 16	4	
19	G005786-016050-01	螺栓 M16×1.5×50 Bolt M16×1.5×50	4	
20	S16V450-300006-000	挂钩板 Plate	2	
21	G000068-008016-00	螺钉 M8×16 Screw M8×16	4	
22	S16V450-300002-000	下滑块 Block,down	2	
23	S16V450-300008-000	调整垫 Ajusting shim	2	
24	S16V450-300009-000	调整垫 Ajusting shim	2	
25	G000091-3P2030-00	开口销 Split pin	2	NEW

图 27 右升降油缸/Lift cylinder,Right
Fig.27 左升降油缸/Lift cylinder,Left

1.0t-1.8t 3级全自由门架 TRIPLEX MAST

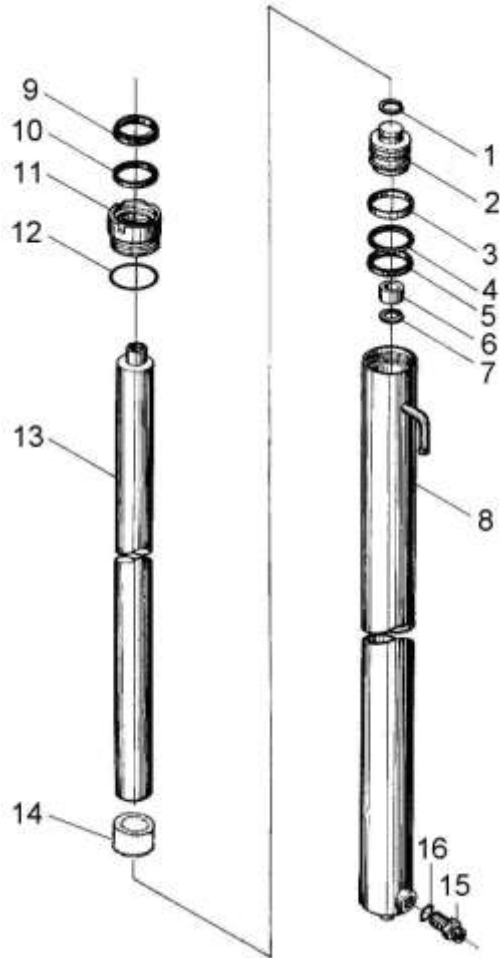


序号 Item	物料码 Part NO.	名称 Description	数量 Qty	备注或适用车型 Remarks or Serial NO.
A1		右升降油缸 Lift cylinder,Right	1	See OP. Parts 17 INC:1-16
A2		左升降油缸 Lift cylinder,Left	1	See OP. Parts 17 INC:1-14
1	G0895P1-000024-00	挡圈 24 Snap shim 24	2	
2	N15M300-400002-W00	活塞 Piston	2	
3	N15M300-400003-W00	支承圈 Support ring	2	
4	N15M300-400004-W00	保护圈 Ring	2	
5	FU0563L0-G00	OSI 密封圈 D45 OSI-seal ring D45	2	
6	N15M300-400005-W00	阀套 Sleeve	2	
7	G0895P1-000024-00	挡圈 24 Snap ring 24	2	
8		右缸体 Cylinder body, R	1	See OP.Parts 17
8		左缸体 Cylinder body, L	1	See OP.Parts 17
9	FD2041A0-G00	DKI 防尘圈 d35 LBH-dustproof ring d35	2	
10	FU0424K0-G00	ISI 密封圈 d35 ISI-seal ring d35	2	
11	N15M300-402000-W00	导向套 Guide sleeve	2	

注：序号 1,2,13,组装后为不可拆分整体,用户订购时应订购整个组合件。
Notice: No. 1,2,13,after the assy, it's a whole,also, when user order.

图 27 右升降油缸/Lift cylinder,Right
Fig.27 左升降油缸/Lift cylinder,Left

1.0t-1.8t 3级全自由门架 TRIPLEX MAST



序号 Item	物料码 Part NO.	名称 Description	数量 Qty	备注或适用车型 Remarks or Serial NO.
12	G3452P1-46P22P65-00	O 形密封圈 46.2x2.65 O-ring 46.2x2.65	2	
13		活塞杆 Piston rod	2	See OP.Parts 17
14		隔套 Sheath	2	See OP.Parts 17
15	X15M300-403000-W00	油嘴组件 Nozzle valve assy	1	右升降油缸 Lift cylinder,Right
16	G3452P1-00142P65-00	O 形密封圈 14x2.65 O-ring 14x2.65	1	右升降油缸 Lift cylinder,Right
K1	X15M300-4/5-000-Kit	左右缸修理包 Lift cylinder- KIT	1	For (1-1.8t): INC: 5, 9,10,12,16

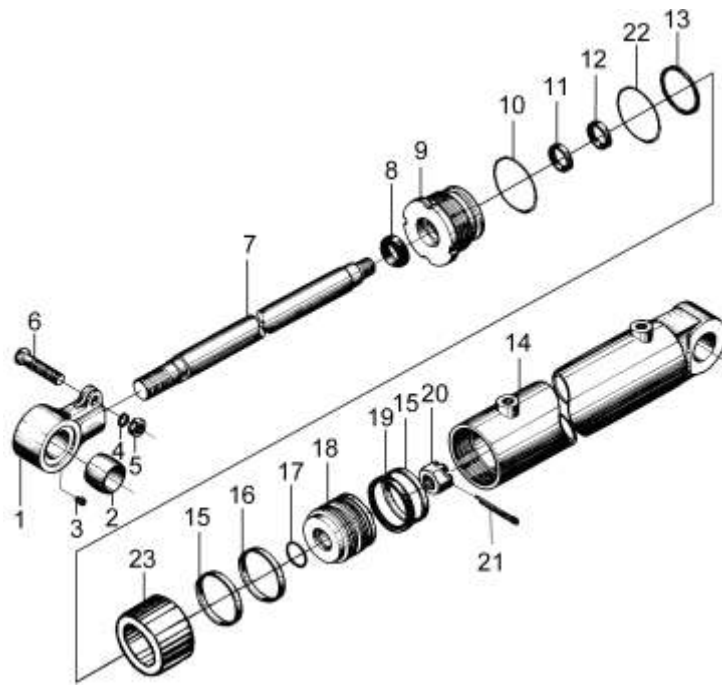
注：序号 1,2,13,组装后为不可拆分整体,用户订购时应订购整个组合件。
Notice: No. 1,2,13,after the assy, it's a whole,also, when user order.

选配表 17 <Optional Parts List 17>

序号 Item	A1 Lift cylinder,Right	A2 Lift cylinder,Left	8 Cylinder body, R	8 Cylinder body , L	13 Piston rod	14 Sheath
起升高度 Lift Height	物料码 Part NO.	物料码 Part NO.	物料码 Part NO.	物料码 Part NO.	物料码 Part NO.	物料码 Part NO.
4000	X15N400-400000-000	X15N400-500000-000	X15N400-401000-W00	X15N400-501000-W00	X15N400-400001-W00	N15MY-400002-W00
4300	X15N430-400000-000	X15N430-500000-000	X15N430-401000-W00	X15N430-501000-W00	X15N430-400001-W00	N15MY-400002-W00
4500	X15M300-400000-001	X15M300-500000-001	X15M300-401000-W01	X15M300-501000-W01	X15N450-400001-W00	N15MY-400002-W00
4700	X15N470-400000-000	X15N470-500000-000	X15N470-401000-W00	X15N470-501000-W00	X15N470-400001-W00	N15MY-400002-W00
4800	X15N480-400000-000	X15N480-500000-000	X15N480-401000-W00	X15N480-501000-W00	X15N480-400001-W00	N15MY-400002-W00
5000	X15N500-400000-000	X15N500-500000-000	X15N500-401000-W00	X15N500-501000-W00	X15N500-400001-W00	N15MY-400002-W00
5500	X15N550-400000-000	X15N550-500000-000	X15N550-401000-W00	X15N550-501000-W00	X15N550-400001-W00	N15MY-400002-W00
6000	X15N600-400000-000	X15N600-500000-000	X15N600-401000-W00	X15N600-501000-W00	X15N600-400001-W00	N15MY-400002-W00
6500	X15N650-400000-000	X15N650-500000-000	X15N650-401000-W00	X15N650-501000-W00	X15N650-400001-W00	N15MY-400002-W00
7000	X15N700-400000-000	X15N700-500000-000	X15N700-401000-W00	X15N700-501000-W00	X15N700-400001-W00	N15MY-400002-W00

图 28 倾斜油缸
Fig.28 Tilt cylinder

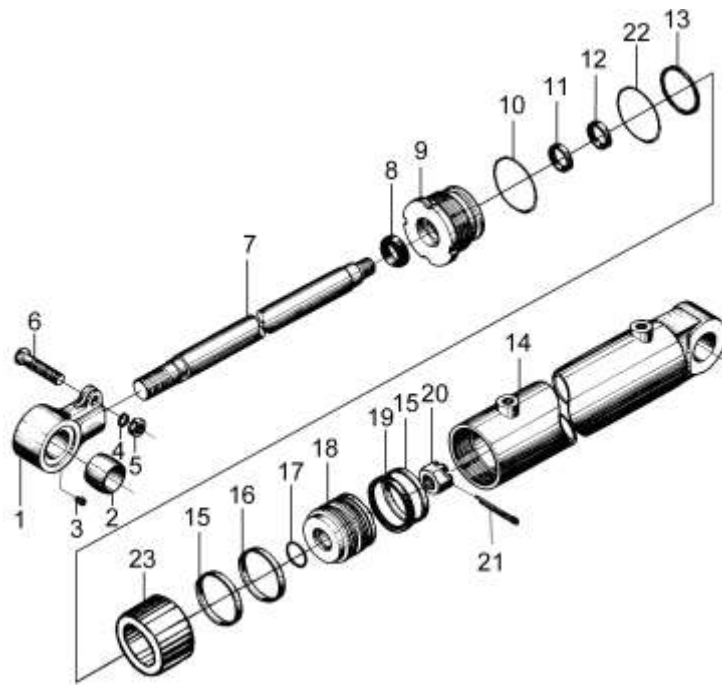
1.0t-1.8t 3级全自由门架 TRIPLEX MAST



序号 Item	物料码 Part NO.	名称 Description	数量 Qty	备注或适用车型 Remarks or Serial NO.
A1		倾斜油缸 Tilt cylinder	2	See OP.Parts 18
1	R30M300-600002-000	耳环 Ear ring	2	
2	N30M300-600002-000	球面轴承 Bearing	2	
3	G001152-006000-00	油杯 M6 Oil cup M6	2	
4	G000093-000014-00	垫圈 14 Washer 14	2	
5	G006171-000014-02	螺母 M14×1.5 Nut M14×1.5	2	
6	G005785-014060-01	螺栓 M14×1.5×60 Bolt M14×1.5×60	2	
7	X15N450-600003-W00	活塞杆 Piston rod	2	
8	d30-G00	防尘圈 d30×38×5×6.5 Dust ring d30×38×5×6.5	2	
9	N30M300-602000-000	导向套 Guide sleeve	2	
10	G001235-007503P1-00	O 形密封圈 75×3.1 O-ring 75×3.1	2	
11	RU3000300-Z20-G00	U 形密封圈 d30 U-seal ring d30	2	
12	RS1300300-T46NA-G00	斯特封 d30 Seal-ring d30	2	
13	G001235-007005P7-00	O 形密封圈 70×5.7 O-ring 70×5.7	2	
14	X15M300-601000-W00	缸体 Cylinder body	2	

图 28 倾斜油缸
Fig.28 Tilt cylinder

1.0t-1.8t 3级全自由门架 TRIPLEX MAST



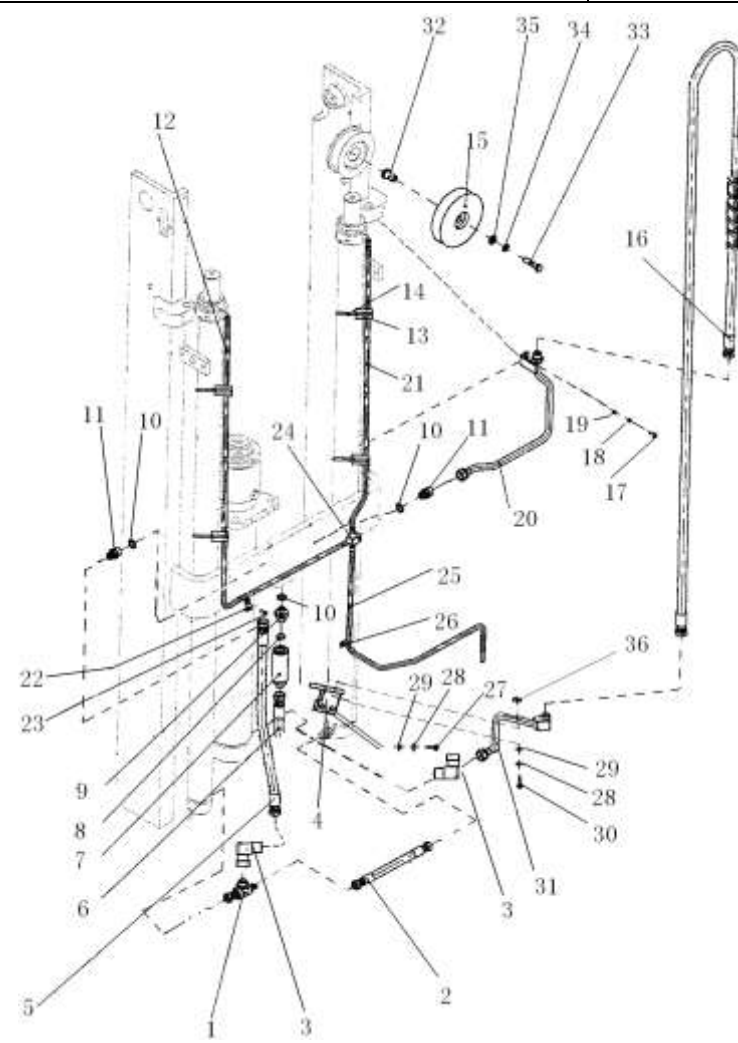
序号 Item	物料码 Part NO.	名称 Description	数量 Qty	备注或适用车型 Remarks or Serial NO.
15	FU0846K0-G00	OSI 密封圈 D70 OSI-seal ring D70	4	
16	3M3H-600009C	挡圈 70×60×2.5 Snap ring 70×60×2.5	2	
17	G001235-003503P1-00	O 形密封圈 35×3.1 O-ring 35×3.1	2	
18	X15M300-600002-W00	活塞 Piston	2	
19	3M3H-600006C	支撑环 Support ring	2	
20	G009459-000024-02	螺母 M24×2 Nut M24×2	2	
21	G000091-005045-00	销 5×45 Pin 5×45	2	
22	N30M300-600006-000	保护圈 70×61×2.5 Ring 70×61×2.5	2	
23		隔套 Sheath	2	See OP.Parts 18
K1	X15M300-6-000-Kit	倾斜油缸修理包 Tilt cylinder-KIT	1	For (1-1.8t): INC:8,10-13,15,17

选配表 18 <Optional Parts List 18>

序号 Item	A1	23
起升高度 Lift Height	代号 Part No	代号 Part No
4000	X15N450-600000-000	X15N450-600002-000
4300	X15N450-600000-000	X15N450-600002-000
4500	X15N450-600000-000	X15N450-600002-000
4700	X15N450-600000-000	X15N450-600002-000
4800	X15N450-600000-000	X15N450-600002-000
5000	X15N450-600000-000	X15N450-600002-000
5500	X15N550-600000-000	X15N550-600002-000
6000	X15N550-600000-000	X15N550-600002-000
6500	X15N550-600000-000	X15N550-600002-000
7000	X15N550-600000-000	X15N550-600002-000

图 29 油路系统
Fig.29 Mast piping

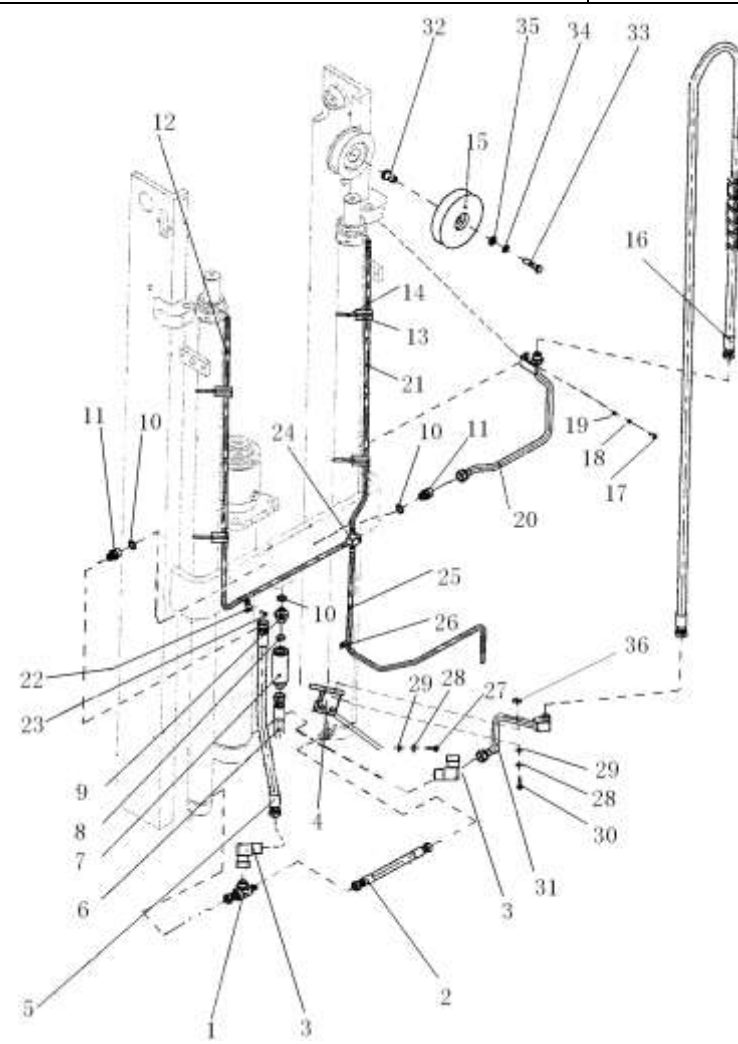
1.0t-1.8t 3级全自由门架 TRIPLEX MAST



序号 Item	物料码 Part NO.	名称 Description	数量 Qty	备注或适用车型 Remarks or Serial NO.
1	RC25U300-704000-000	三通接头 Tee connector	1	
2	X15M300-700002-000	胶管接头 Oil pipe assy	1	
3	RC25N450-201000-000	90°管接头 Elbow	1	
4	X15N450-204000-000	固定支架 fixed trestle	1	
5	X15N450-200002-000	胶管接头 Oil pipe assy	1	
6	X25N450-201000-000	油管总成 tubing assembly	1	F, B 变速箱配, 标配 F, B transmission, Standard
6	N30N450-200005-500	油管总成 tubing assy	1	F, B transmission 液压带感知系统功能 Hydraulic with Sensing System function
6	X25N450-201000-010	油管总成 tubing assembly	1	MS变速箱配 MS transmission
7	XSF2-F16L-1.5/40-G00	单向限速阀 Speed limiting valve	1	
8	G001235-002402P4-00	O 形密封圈 24×2.4 O-ring 24×2.4	1	
9	2025N4.3-200005	直通管接头 Connector	1	
10	J000982-000018-00	垫圈 18 Washer 18	3	
11	3N4.5H-200001	直通管接头 Nipple	2	

图 29 油路系统
Fig.29 Mast piping

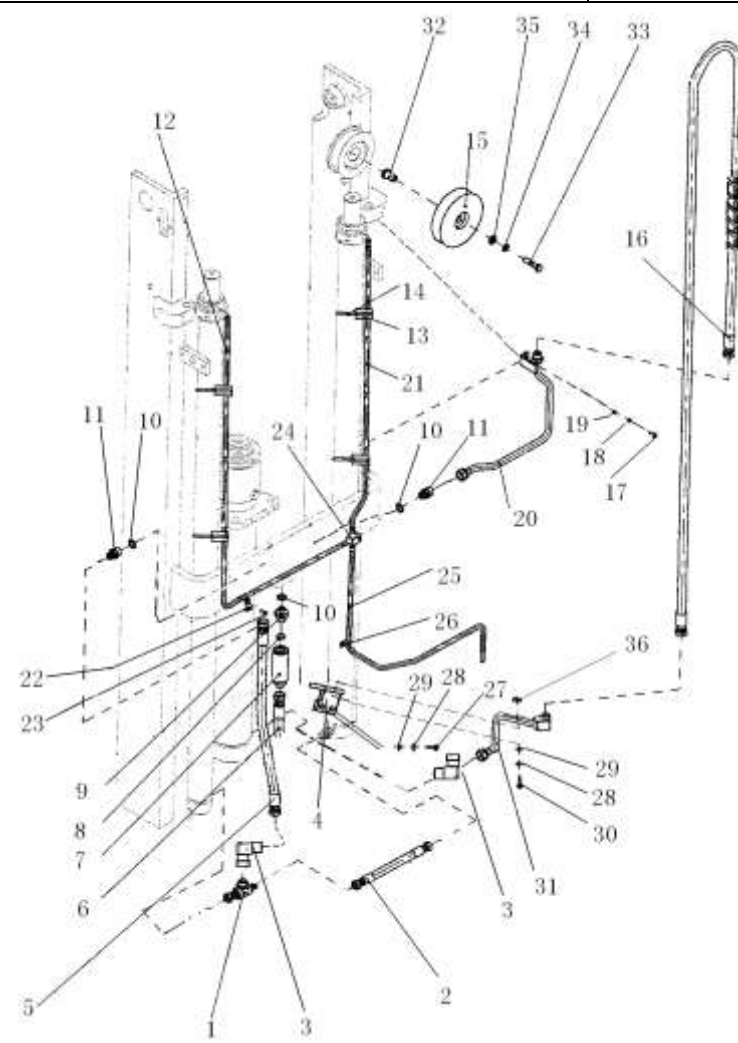
1.0t-1.8t 3级全自由门架 TRIPLEX MAST



序号 Item	物料码 Part NO.	名称 Description	数量 Qty	备注或适用车型 Remarks or Serial NO.
12		回油管 $\Phi 14.5/\Phi 9.5$ Return oil pipe	1	See OP.Parts 19
13	N30M300-700002-000	镶边 Band	5	
14	GT-3001-G00	通用尼龙扎带 General cable tie	5	
15	1.5N4.5H-200005B	滑轮 Pulley wheel	1	
16		胶管接头 Oil pipe assy	1	See OP.Parts 19
17	G005783-006016-00	螺栓 M6×16 Bolt M6×16	1	
18	G000093-000006-00	垫圈 6 Washer 6	1	
19	G000096-000006-00	垫圈 6 Washer 6	1	
20		钢油管 Oil pipe assy	1	See OP.Parts 19
21		回油管 $\Phi 14.5/\Phi 9.5$ Return oil pipe	1	See OP.Parts 19
22	S16V450-900020-000	管夹 Clip	2	
23	N30M300-003000-000	螺栓 M8×1.25×16 Bolt M8×1.25×16	3	
24	N30M300-700005-000	三通接头 Tee connector	1	
25	X15M300-700007-000	回油管 $\Phi 14.5/\Phi 9.5$ Return oil pipe	1	
26	N30M300-700008-000	管夹 Clip	1	

图 29 油路系统
Fig.29 Mast piping

1.0t-1.8t 3级全自由门架 TRIPLEX MAST



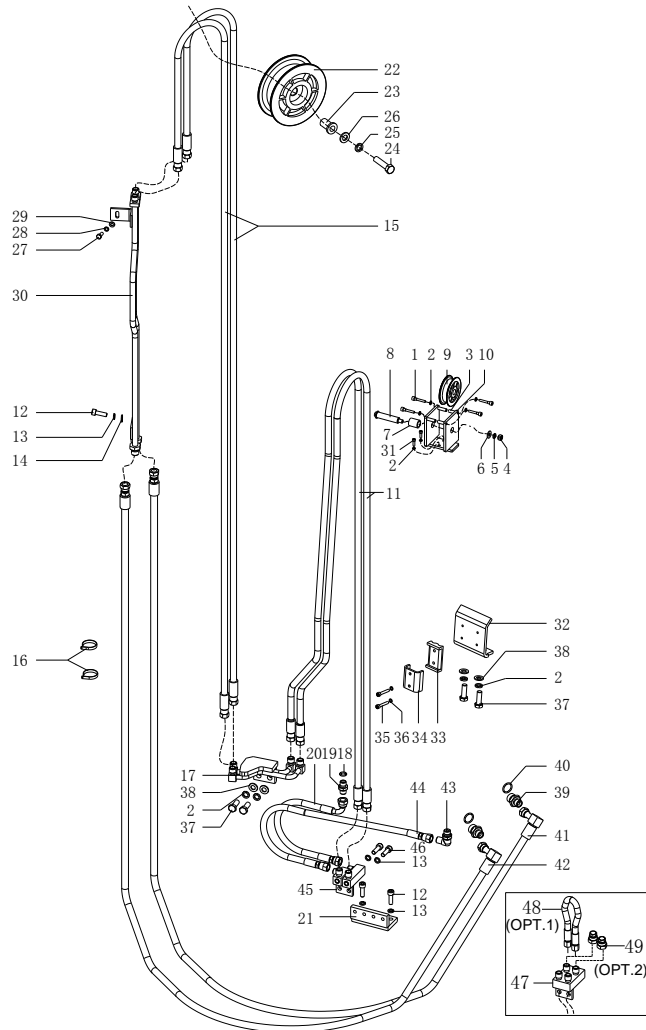
序号 Item	物料码 Part NO.	名称 Description	数量 Qty	备注或适用车型 Remarks or Serial NO.
27	G005783-010025-00	螺栓 M10×25 Bolt M10×25	2	
28	G000093-000010-00	垫圈 10 Washer 10	2	
29	G0097P1-000010-00	垫圈 10 Washer 10	2	
30	G000070-010035-00	螺钉 M10×35 Screw M10×35	1	
31	X15N450-203000-000	硬管接头 Hard pipe connection	1	
32	N15N450-200021-000	轴套 Shaft sleeve	1	
33	G005782-014055-00	螺栓 M14×55 Bolt M14×55	1	
34	G000093-000014-00	垫圈 14 Washer 14	1	
35	G0097P1-000014-00	垫圈 14 Washer 14	1	
36	G006170-000010-00	螺母 M10 Nut M10	1	

选配表 19 <Optional Parts List 19>

序号 Item	12	16	20	21
起升高度 Lift Height	物料码 Part NO.	物料码 Part NO.	物料码 Part NO.	物料码 Part NO.
4000	X15N400-200004-000	X15N400-200003-000	X15N400-202000-000	X15N400-200005-000
4300	X15N430-200004-000	X15N430-200003-000	X15N430-202000-000	X15N430-200005-000
4500	X15M300-700001-000	X15N450-200003-000	X15N450-202000-000	X15M300-700004-000
4700	X15N470-200004-000	X15N470-200003-000	X15N470-202000-000	X15N470-200005-000
4800	X15N480-200004-000	X15N480-200003-000	X15N480-202000-000	X15N480-200005-000
5000	X15N500-200004-000	X15N500-200003-000	X15N500-202000-000	X15N500-200005-000
5500	X15N550-200004-000	X15N550-200003-000	X15N550-202000-000	X15N550-200005-000
6000	X15N600-200004-000	X15N600-200003-000	X15N600-202000-000	X15N600-200005-000
6500	X15N650-200004-000	X15N650-200003-000	X15N650-202000-000	X15N650-200005-000
7000	X15N700-200004-000	X15N700-200003-000	X15N700-202000-000	X15N700-200005-000

图 30 侧移油路
Fig.30 lateral moving circuit

1.0t-1.8t 3级全自由门架 TRIPLEX MAST

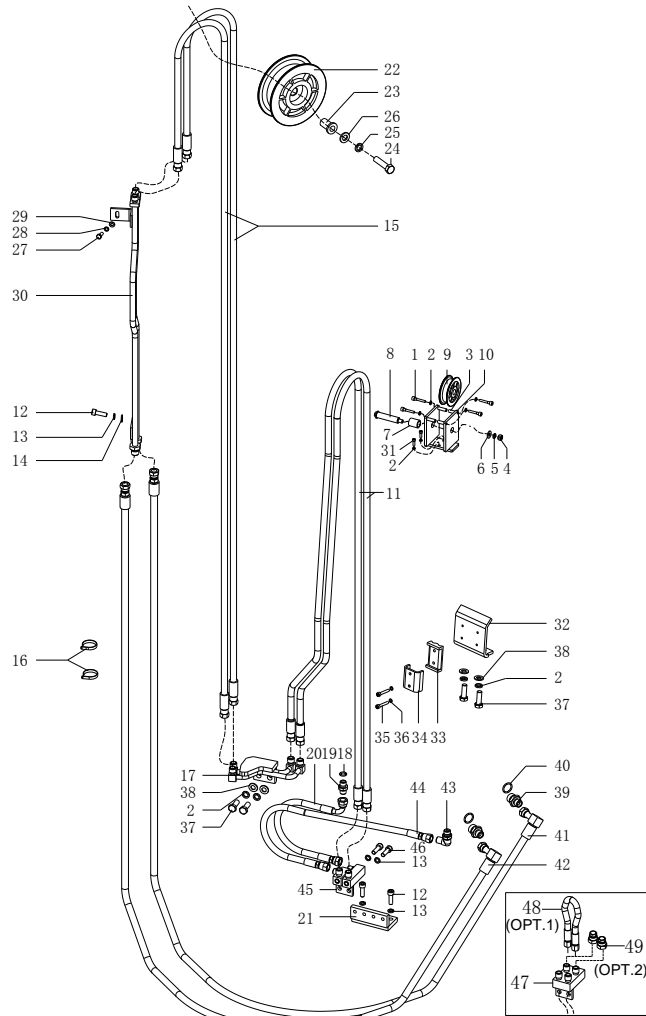


序号 Item	物料码 Part NO.	名称 Description	数量 Qty	备注或适用车型 Remarks or Serial NO.
A1		侧移油路 lateral moving circuit	1	See OP.Parts 20
1	X15V450-900001-000	螺钉 Screw	4	
2	G000093-000010-00	垫圈 10 Washer 10	6	
3	X15V450-900002-000	套 cover	4	
4	G006170-000014-00	螺母 M14 Nut M14	1	
5	G000093-000014-00	垫圈 14 Washer 14	1	
6	J25B300-900005-000	垫圈 Washer	1	
7	X15V450-900016-000	套 cover	1	
8	X15V450-900007-000	滑轮轴 pulley shaft	1	
9	X15V450-900014-000	滑轮 pulley	1	
10	X15V450-904000-000	支架 Bracket	1	
11		胶管接头 Hose	2	See OP.Parts 20
12	G000070-008025-00	螺钉 M8x25 Screw M8x25	3	
13	G000093-000008-00	垫圈 8 Washer 8	5	

备注：安装第四联油路时，序号 7 取消。
Note: the installation of the fourth page oil routes,item 7 cancel.

图 30 侧移油路
Fig.30 lateral moving circuit

1.0t-1.8t 3级全自由门架 TRIPLEX MAST

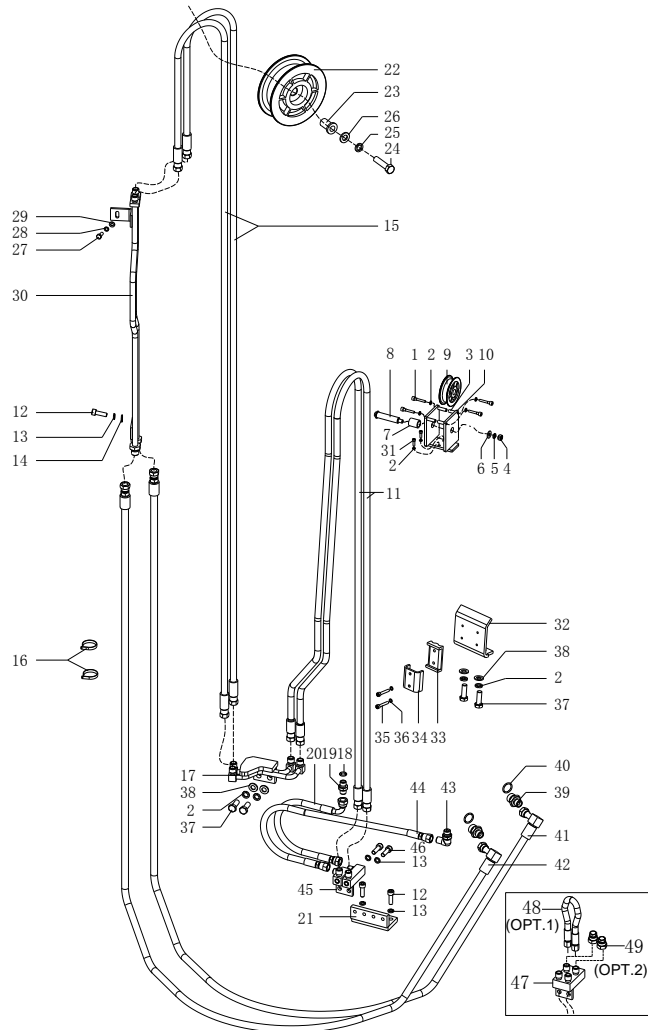


序号 Item	物料码 Part NO.	名称 Description	数量 Qty	备注或适用车型 Remarks or Serial NO.
14	G0097P1-000008-00	垫圈 8 Washer 8	1	
15		胶管接头 Hose	2	See OP.Parts 20
16	GT-3001-G00	通用尼龙扎带 Nylon ties	2	
17	X15V450-902000-000	硬管接头 hard connection	1	
18	JISB2401-P11-G00	O形密封圈 P11 O-ring P11	1	
19	S16B300-900011-000	直通接头 Connector	1	
20	X25V450-900004-001	胶管总成 Hose	1	内置式 Built-in
21	X15V450-905000-000	固定支座 fixed bearing	1	
22	S16V450-900014-001	滑轮 pulley	1	
23	S16B300-900007-000	轴套 sleeve	1	
24	G005782-014060-00	螺栓 M14×60 Bolt M14×60	1	
25	G000093-000014-00	垫圈 14 Washer 14	1	
26	G0097P1-000014-00	垫圈 14 Washer 14	1	
27	G005783-006016-00	螺栓 M6×16 Bolt M6×16	1	

备注：安装第四联油路时，序号 7 取消。
Note: the installation of the fourth page oil routes, item 7 cancel.

图 30 侧移油路
Fig.30 lateral moving circuit

1.0t-1.8t 3级全自由门架 TRIPLEX MAST

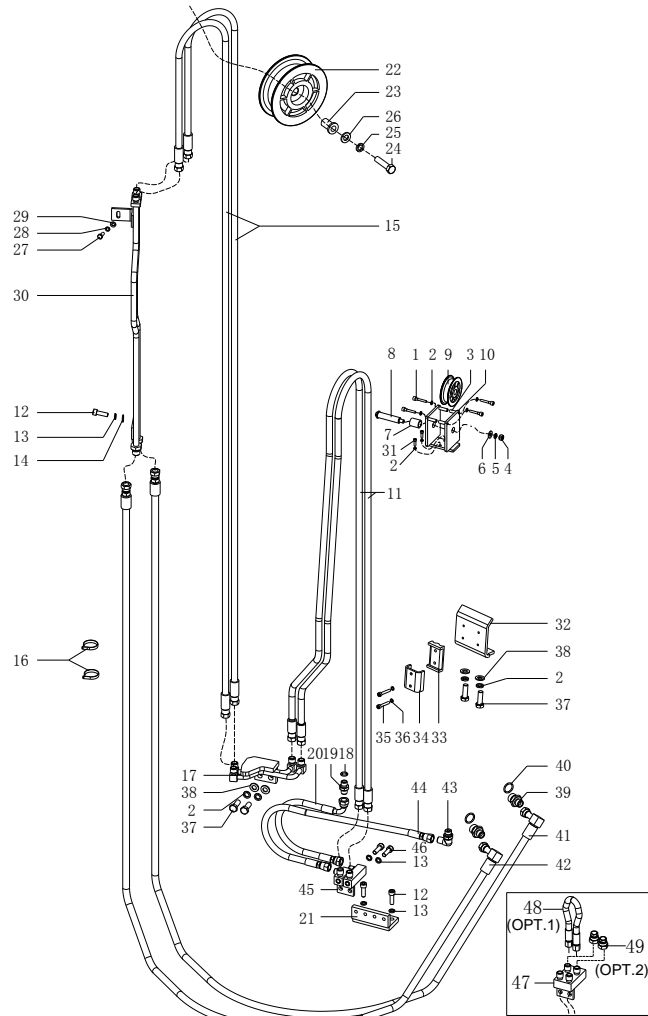


序号 Item	物料码 Part NO.	名称 Description	数量 Qty	备注或适用车型 Remarks or Serial NO.
28	G000093-000006-00	垫圈 6 Washer 6	1	
29	G000096-000006-00	垫圈 6 Washer 6	1	
30		钢油管 Oil pipe assy	1	See OP.Parts 20
31	N35M300-004000-000	螺栓 M10×1.25×20 Bolt M10×1.25×20	2	
32	RC25V450-900016-000	固定板 fixed plate	1	X15V450-900006-000
33	RC25V450-900018-000	橡胶垫 rubber pad	1	
34	RC25V450-900017-000	管夹 tube folder	1	
35	G000070-005030-00	螺钉 M5×30 Screw M5×30	2	
36	G000093-000005-00	垫圈 5 Washer 5	2	
37	G005783-010025-00	螺栓 M10×25 Bolt M10×25	2	
38	G0097P1-000010-00	垫圈 10 Washer 10	2	
39	RC25V450-900006-000	直通接头 Connector	2	
40	G001235-002202P4-00	O 形密封圈 22×2.4 O-ring 22×2.4	2	
41	X25V450-900001-001	胶管接头 Hose	1	

备注：安装第四联油路时，序号 7 取消。
Note: the installation of the fourth page oil routes, item 7 cancel.

图 30 侧移油路
Fig.30 lateral moving circuit

1.0t-1.8t 3级全自由门架 TRIPLEX MAST



序号 Item	物料码 Part NO.	名称 Description	数量 Qty	备注或适用车型 Remarks or Serial NO.
42	X25V450-900002-001	胶管接头 Hose	1	
43	N163-620800-000	90°管接头 Elbow	1	
44	X25V450-900005-001	胶管总成 Hose	1	内置式 Built-in
45	X15V450-907000-000	接头支座 joint bearing	1	内置式, Built-in
45	X15V450-907000-000	接头支座 Joint bearing	1	≤2012-12 非内置式 Non-built-in
46	G000070-008020-00	螺钉 M8x20 Screw M8x20	2	
47	X15V450-808000-000	接头支座 Joint bearing	1	≥2012-12,非内置式, Non-built-in
48	6IK-200G1/4	胶管总成(选装 1) Hose(OPT.1)	1	非内置式, 不带属具 Non-built-in Block the joint when without attachment
49	RC25V450-805000-000	闷盖(选装 2) Cover(OPT.2)	2	非内置式, 不带属具 Non-built-in Block the joint when without attachment

备注: 安装第四联油路时, 序号 7 取消。
Note: the installation of the fourth page oil routes,item 7 cancel.

选配表 20 <Optional Parts List 20>

序号 Item	A1	11	15	30
起升高度 Lift Height	物料码 Part NO.	物料码 Part NO.	物料码 Part NO.	物料码 Part NO.
4000	X15V400-900000-000	X15V400-900015-000	X15V400-900003-000	X15V400-903000-000
4300	X15V430-900000-000	X15V430-900015-000	X15V430-900003-000	X15V430-903000-000
4500	X15V450-900000-000	X15V450-900015-000	X15V450-900003-000	X15V450-903000-000
4700	X15V470-900000-000	X15V470-900015-000	X15V470-900003-000	X15V470-903000-000
4800	X15V480-900000-000	X15V480-900015-000	X15V480-900003-000	X15V480-903000-000
5000	X15V500-900000-000	X15V500-900015-000	X15V500-900003-000	X15V500-903000-000
5500	X15V550-900000-000	X15V550-900015-000	X15V550-900003-000	X15V550-903000-000
6000	X15V600-900000-000	X15V600-900015-000	X15V600-900003-000	X15V600-903000-000
6500	X15V650-900000-000	X15V650-900015-000	X15V650-900003-000	X15V650-903000-000
7000	X15V700-900000-000	X15V700-900015-000	X15V700-900003-000	X15V700-903000-000

图 31 第四联油路

Fig.31 Fourth oil

1.0t-1.8t 3级全自由门架 TRIPLEX MAST

序号 Item	物料码 Part NO.	名称 Description	数量 Qty	备注或适用车型 Remarks or Serial NO.
A1		第四联油路 The fourth joint oil pipeline	1	See OP.Parts 21
1	X15V450-900014-000	滑轮 Pulley	1	
2		胶管接头 Hose connector	2	See OP.Parts 21
3		胶管接头 Hose connector	2	See OP.Parts 21
4	X15V450-803000-000	钢油管 Oil pipe assy	1	
5	X15V450-802000-000	接头支座 Joint bearing	1	
6	G000093-000010-00	垫圈 10 Washer 10	4	
7	G000070-010020-00	螺钉 M10×20 Screw M10×20	4	
8	X25V450-800006-001	滑轮支架 Pulley bracket	1	
9	X25V450-800014-001	滑轮 Pulley	1	
10	G005783-006012-00	螺栓 M6×12 Bolt M6×12	1	
11	G000093-000006-00	垫圈 6 Washer 6	1	
12	X25V450-801000-001	销轴 Pin	1	
13	G000070-008020-00	螺钉 M8×20 Screw M8×20	4	
14	G000093-000008-00	垫圈 8 Washer 8	4	

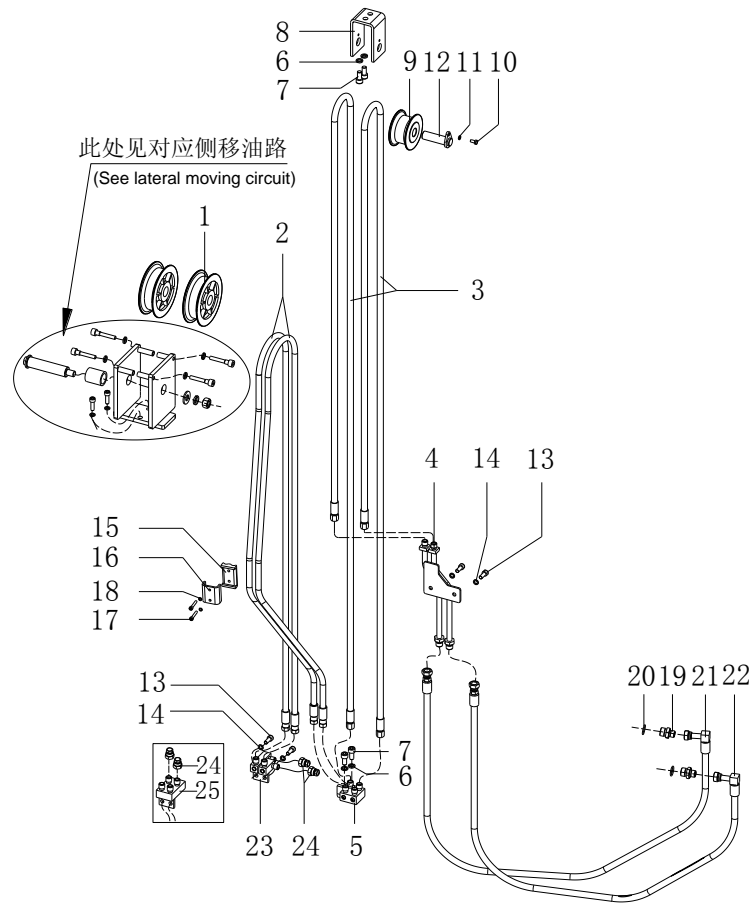
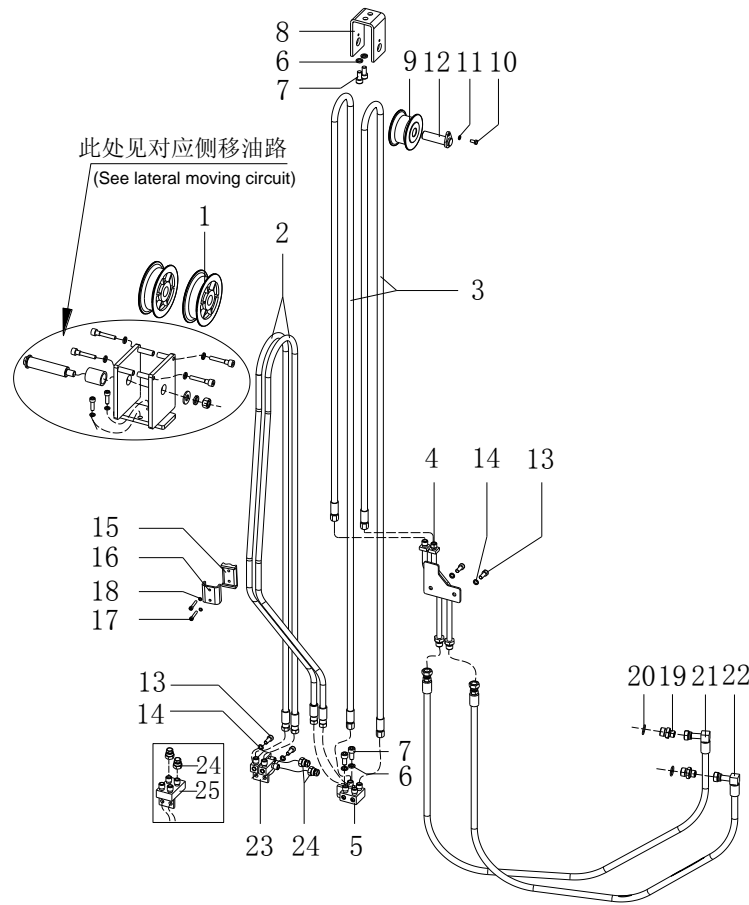


图 31 第四联油路

Fig.31 Fourth oil

1.0t-1.8t 3级全自由门架 TRIPLEX MAST

序号 Item	物料码 Part NO.	名称 Description	数量 Qty	备注或适用车型 Remarks or Serial NO.
15	RC25V450-900018-000	橡胶垫 Rubber pad	1	
16	RC25V450-900017-000	管夹 tube folder	1	
17	G000070-005030-00	螺钉 M5×30 Screw M5×30	2	
18	G000093-000005-00	垫圈 5 Washer 5	2	
19	RC25V450-900006-000	直通接头 Nipple	2	
20	G001235-002202P4-00	O形密封圈 22×2.4 O-ring 22×2.4	2	
21	X25V450-800001-001	胶管接头 hose connector	1	
22	X25V450-800002-001	胶管接头 Hose connector	1	
23	X15V450-807000-000	接头支座 joint bearing	1	内置式, Built-in
23	X15V450-807000-000	接头支座 Joint bearing	1	≤2012-12 非内置式 Non-built-in
24	RC25V450-805000-000	闷盖 cover	2	
25	X15V450-808000-000	接头支座 Joint bearing	1	≥2012-12,非内置门架 Non-built-in



选配表 21 <Optional Parts List 21>

序号 Item	A1	2	3
起升高度 Lift Height	物料码 Part NO.	物料码 Part NO.	物料码 Part NO.
4000	X15V400-800000-000	X15V400-800015-000	X15V400-800003-000
4300	X15V430-800000-000	X15V430-800015-000	X15V430-800003-000
4500	X15V450-800000-000	X15V450-800015-000	X15V450-800003-000
4700	X15V470-800000-000	X15V470-800015-000	X15V470-800003-000
4800	X15V480-800000-000	X15V480-800015-000	X15V480-800003-000
5000	X15V500-800000-000	X15V500-800015-000	X15V500-800003-000
5500	X15V550-800000-000	X15V550-800015-000	X15V550-800003-000
6000	X15V600-800000-000	X15V600-800015-000	X15V600-800003-000
6500	X15V650-800000-000	X15V650-800015-000	X15V650-800003-000
7000	X15V700-800000-000	X15V700-800015-000	X15V700-800003-000