

---

\* FIRST EDITION : FEBRUARY 2011

---

©2011 NISSAN FORKLIFT CO., LTD.

*All Rights Reserved. No part of this publication may be reproduced in any form without the prior written permission of the publisher.*

## 1. REMARKS ON THE PARTS CATALOG

This parts catalog has the information on the spare parts for TD27 engine, going back to October 2008 when the TD27 engine was introduced.

Please note that the contents of this parts catalog are subject to change, deletion, and non-sale without prior notice.

Please note that this parts catalog does not indicate how to service forklift trucks.

Whether all or partial, photocopying is prohibited without prior consent of Nissan.

## 2. ENGINE MODELS HEREIN

Model No.	Applied Model	Start of Production	Specification
1	10100-FF46C	October, 2008	TD27

## 3. CATALOG APPLIED

The symbol and abbreviation are used in this particular note space as follows.

However, the supplier type and the general name are not indicated on this list.

Catalog Applied	Meaning	Example	Catalog Applied	Meaning	Example
*	Optional Equipment		CUT USE	Cut Use	L=120 CUT USE
AR	As Required		STD	Standard	STD
-A	Ampere	10A	T=~	Thickness (mm)	T=0.01
-C	Temperature	82C	US=~	Under Size (mm)	US=0.25
D=	Diameter (mm)	D=10	~V	Volts	12V
F/~	Exclusive Use	F/GAS	W/~	With	W/RUB
~KW	Kilowatt, Electric power	2.3KW	W/O~	Without	W/O RUB
L=	Length (mm)	L=910	Z=~	Number of Gear Teeth	Z=17
OS=~	Oversize (mm)	OS=0.50	GRADE~	Grade	GRADE 1
SELECT	Selection Use	SELECT L=19.5	FR	Front	F/FR
			RR	Rear	F/RR
SELECT USE	Proper Use	SELECT USE	RH	Right	F/RH
			LH	Left	F/LH





# GENERAL INDEX

- A ENGINE MECHANICAL
- B FUEL & ENGINE CONTROL
- C EXHAUST & COOLING
- D ENGINE ELECTRICAL

- ALPHA. PART NAME INDEX
- PART NO. INDEX

# SECTION INDEX

## [A] ENGINE MECHANICAL

SEC. NO.	SECTION NAME	PAGE NO.
101	BARE & SHORT ENGINE .....	4
102	ENGINE GASKET KIT .....	6
110	CYLINDER BLOCK & OIL PAN .....	8
111	CYLINDER HEAD & ROCKER COVER .....	10
117	FAN,COMPRESSOR & POWER STEERING BELT .....	12
118	CRANK CASE VENTILATION .....	14
120	PISTON,CRANKSHAFT & FLYWHEEL .....	16
130	CAMSHAFT & VALVE MECHANISM .....	18
135	FRONT COVER & FITTING .....	20
140	MANIFOLD .....	22
150	LUBRICATING SYSTEM .....	24

## [B] FUEL, ENGINE & MOTOR CONTROL

SEC. NO.	SECTION NAME	PAGE NO.
164	FUEL STRAINER & FUEL HOSE .....	28
185	FUEL SUPPLY SYSTEM .....	30
186	FUEL INJECTION PUMP .....	32

## [C] EXHAUST & COOLING

SEC. NO.	SECTION NAME	PAGE NO.
210	WATER PUMP, COOLING FAN & THERMOSTAT.....	40
213	OIL COOLER .....	42

## [D] ENGINE ELECTRICAL

SEC. NO.	SECTION NAME	PAGE NO.
220	IGNITION SYSTEM .....	46
230	ALTERNATOR FITTING .....	48
231	ALTERNATOR .....	50
232	VACUUM PUMP .....	52
233	STARTER MOTOR .....	54

# GROUP INDEX

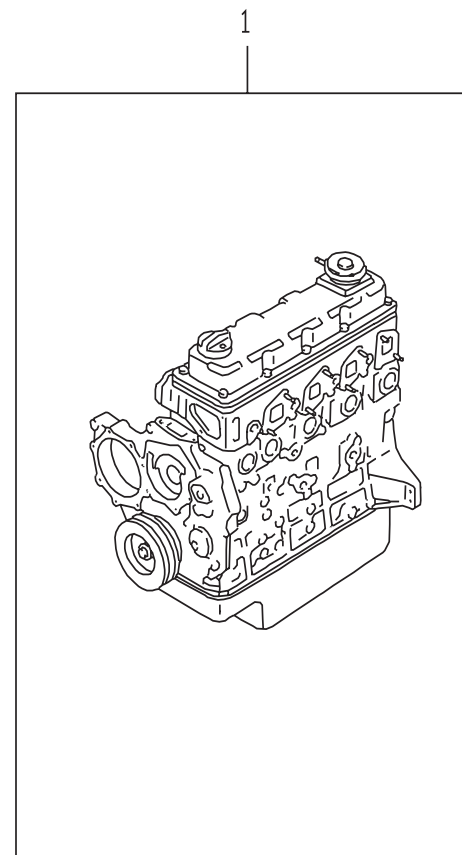
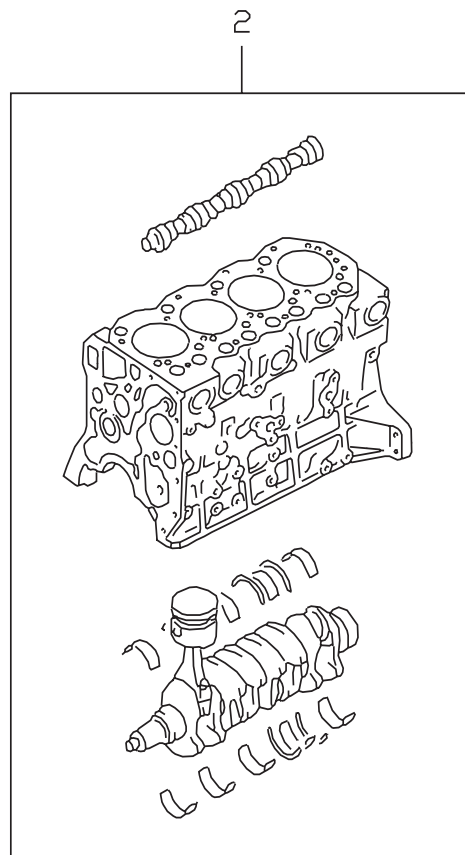
## ENGINE MECHANICAL

SEC. NO.	SECTION NAME	PAGE NO.
101	BARE & SHORT ENGINE .....	4
102	ENGINE GASKET KIT .....	6
110	CYLINDER BLOCK & OIL PAN .....	8
111	CYLINDER HEAD & ROCKER COVER .....	10
117	FAN,COMPRESSOR & POWER STEERING BELT .....	12
118	CRANK CASE VENTILATION .....	14
120	PISTON,CRANKSHAFT & FLYWHEEL .....	16
130	CAMSHAFT & VALVE MECHANISM .....	18
135	FRONT COVER & FITTING .....	20
140	MANIFOLD .....	22
150	LUBRICATING SYSTEM .....	24

A

**SEC. 101**  
**BARE & SHORT ENGINE**

[200810- ]



P0TD2A310101\_A

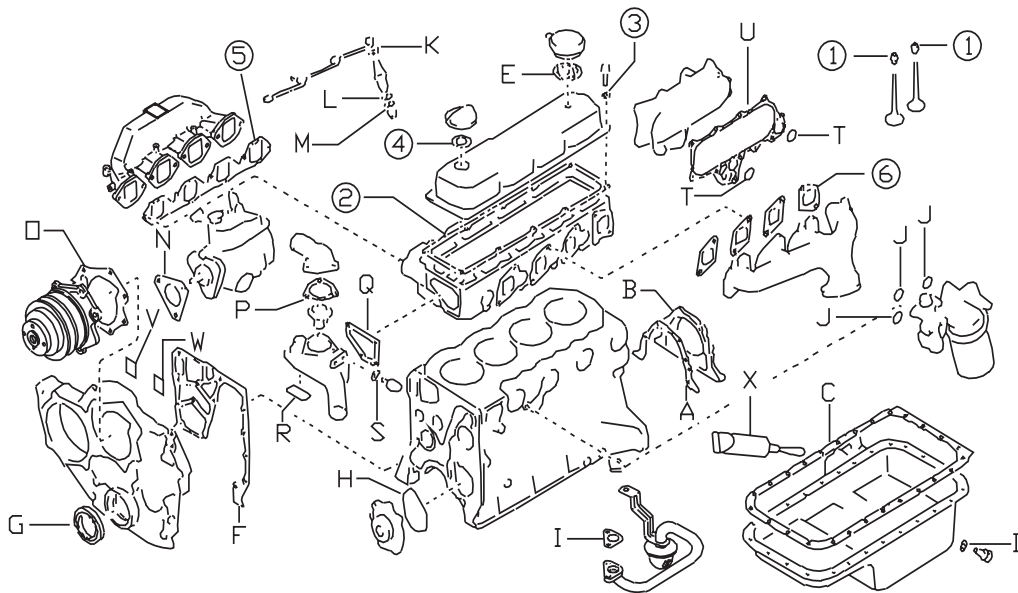


# SEC. 102 ENGINE GASKET KIT

[200810- ]

NOTE; KEY NO.1 GASKET KIT ENGINE REPAIR

QTY



A	··GASKET-RETAINER .....	1
B	··SEAL-OIL CRANK REAR .....	1
C	··GASKET-OIL PAN .....	1
D	··WASHER-DRAIN PLUG .....	1
E	··GASKET-AIR CONTROL VALVE .....	1
F	··GASKET-FRONT PLATE .....	1
G	··SEAL-OIL CLANK FRONT .....	1
H	··GASKET-OIL PUMP .....	1
I	··SEAL-O RING .....	1
J	··SEAL-O RING .....	3
K	··GASKET-NOZZLE .....	4
L	··WASHER-NOZZLE .....	4
M	··GASKET-NOZZLE TOP .....	4
N	··GASKET-INJECTION PUMP .....	1
O	··GASKET-WATER PUMP .....	1
P	··GASKET-OUTLET .....	1
Q	··GASKET-THERMO HOUSING .....	1
R	··SEAL-O RING .....	1
S	··GASKET-THERMO SWITCH .....	1
T	··O RING-OIL FILTER BRACKET .....	2
U	··GASKET-OIL COOLER .....	1
V	··SEAL RUBBER .....	1
W	··SEAL RUBBER .....	1
X	··GASKET-LIQUID .....	1
①	··SEAL-VALVE .....	8
②	··GASKET-ROCKER COVER .....	1
③	··WASHER-SEAL .....	10
④	··PACKING-OIL FILLER CAP .....	1
⑤	··GASKET-MANIFOLD INTAKE .....	1
⑥	··GASKET-EXHAUST MANIFOLD .....	4

NOTE; THIS KIT DOES NOT INCLUDE GASKET-CYLINDER HEAD. PLEASE ORDER GASKET-CYLINDER HEAD SEPARATELY,IF REQUIRED<SEC.111>

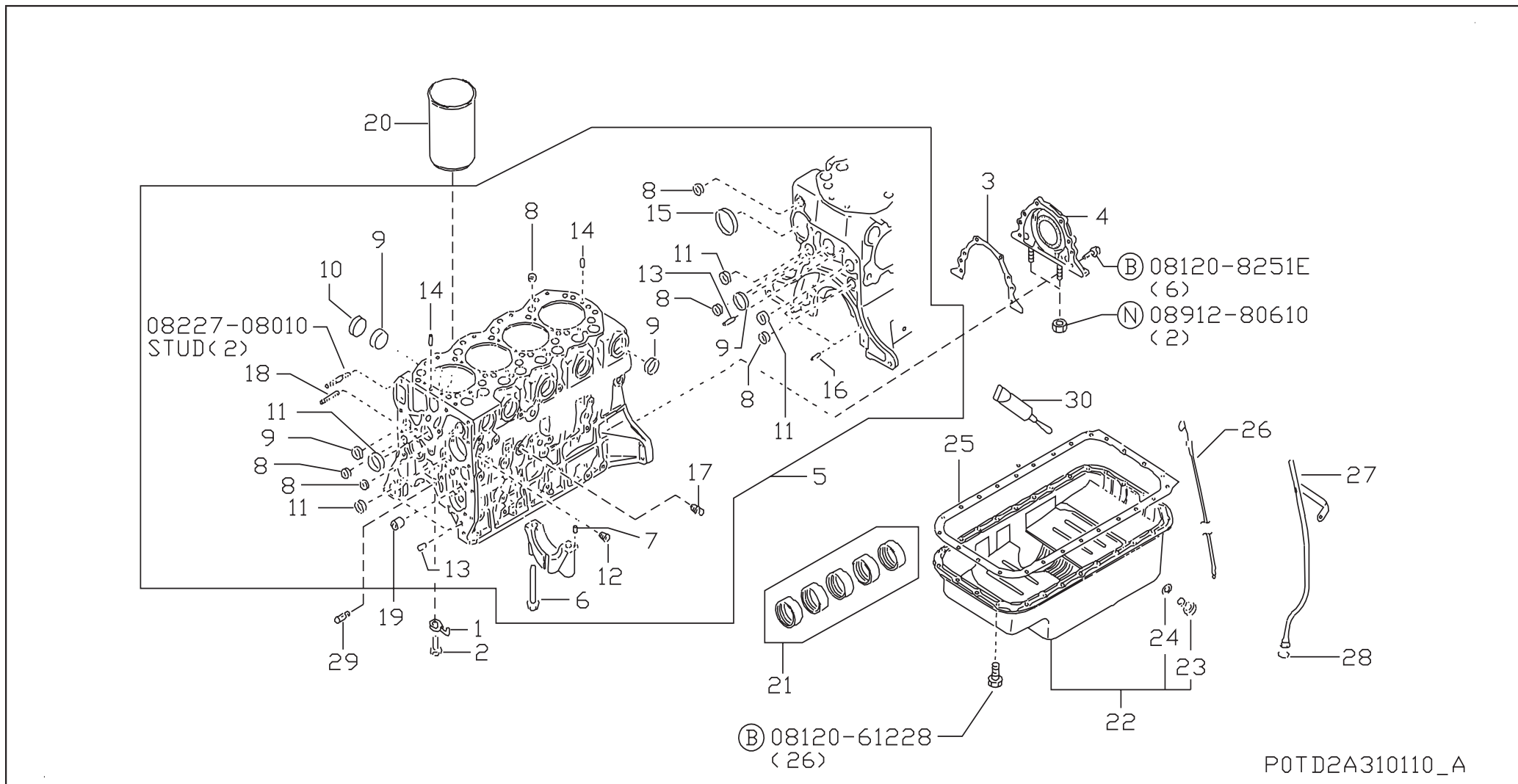
NOTE; KEY NO.2 GASKET-VALVE REGRIND INCLUDES ①~⑥

P0TD2A310102\_A



# SEC. 110 CYLINDER BLOCK & OIL PAN

[200810- ]

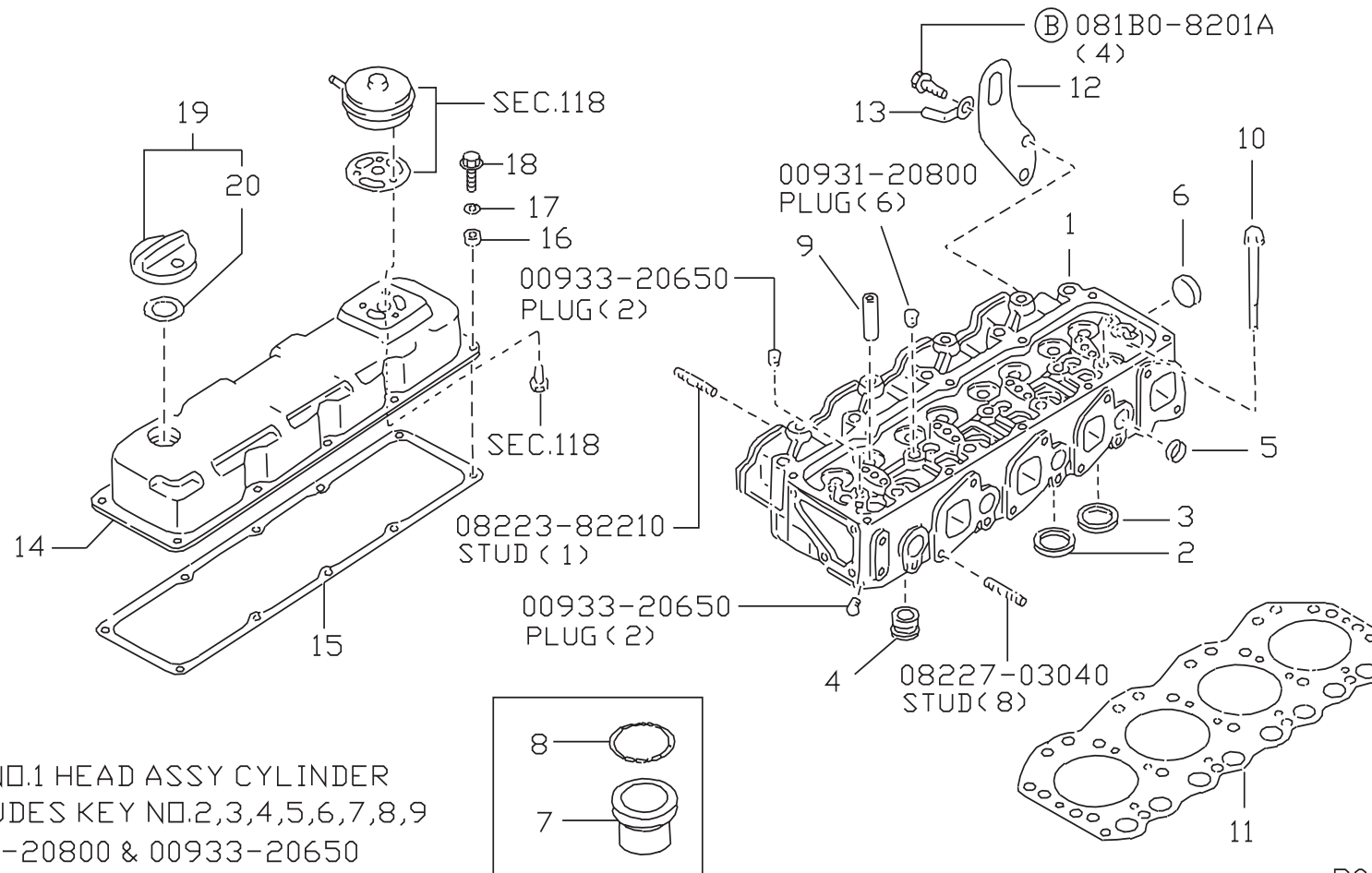


# SEC. 110 CYLINDER BLOCK & OIL PAN

APPLIED MODEL																									
1	0	1	0	0	0	0	0	0	0	1	1	1	1	1	1	1	1	2	2	2	2	2	2	2	3
0	0	0	0	0	0	0	0	0	0	0	0	0	0	0	0	0	0	0	0	0	0	0	0	0	
F	F	F	F	F	F	F	F	F	F	F	F	F	F	F	F	F	F	F	F	F	F	F	F	F	
4	4	4	4	4	4	4	4	4	4	4	4	4	4	4	4	4	4	4	4	4	4	4	4	4	
6	6	6	6	6	6	6	6	6	6	6	6	6	6	6	6	6	6	6	6	6	6	6	6	6	
C	C	C	C	C	C	C	C	C	C	C	C	C	C	C	C	C	C	C	C	C	C	C	C	C	
S	KEY NO.	LEV	PART NO.	PART NAME	SPECIFICATION	QTY	APPLIED DATE	ICAF	FORMER PART NO.	0	0	0	0	0	0	0	0	0	0	0	0	0	0	0	
	1 001 1		12124-43G02	JET ASSY-OIL		04	0810-			0															
	2 001 1		12125-VC700	BOLT-OIL JET		04	0810-			0															
	3 001 1		12298-34N00	GASKET-OIL SEAL		01	0810-			0															
	4 001 1		12279-43G05	SEAL-OIL, CRANKSHAFT REAR		01	0810-			0															
	5 001 1		11009-40K02	BLOCK ASSY-CYLINDER		01	0810-			0															
	6 001 2		12293-OW801	BOLT-MAIN BEARING CAP		10	0810-			0															
	7 001 2		01522-05104	PIN-STRAIGHT		01	0810-			0															
	8 001 2		01648-00224	PLUG-WELCH		10	0810-			0															
	9 001 2		01648-00084	PLUG-WELCH		09	0810-			0															
	10 001 2		01648-00154	PLUG-WELCH		01	0810-			0															
	11 001 2		01648-00024	PLUG-WELCH		04	0810-			0															
	12 001 2		01642-03004	PLUG		03	0810-			0															
	13 001 2		30412-P5100	DOWEL		04	0810-			0															
	14 001 2		11013-T9000	PIN-SPRING		02	0810-			0															
	15 001 2		11019-9000A	PLUG		01	0810-			0															
	16 001 2		12313-10600	DOWEL-PIN		02	0810-			0															
	17 001 2		11021-J200A	PLUG		01	0810-			0															
	18 001 2		15213-43G01	STUD-OIL FILTER		01	0810-			0															
	19 001 1		15075-43G00	BUSH-OIL PUMP DRIVE SPINDLE		02	0810-			0															
	20 001 1		11012-2S000	LINER-CYLINDER		04	0810-			0															
	21 001 1		13002-43G05	BUSH SET	STD	01	0810-			0															
	002 1		13003-43G06		US=0.25	01	0810-			0															
	003 1		-43G07		US=0.50	01	0810-			0															
	004 1		-43G08		US=0.75	01	0810-			0															
	22 001 1		11110-02N09	PAN ASSY-OIL		01	0810-			0															
	23 001 2		11128-51N00	PLUG-DRAIN		01	0810-			0															
	24 001 2		11026-61000	SEAT-DRAIN PLUG		01	0810-			0															
	25 001 1		11121-63G03	GASKET-OIL PAN		01	0810-			0															
	26 001 1		11140-02N01	GAUGE ASSY-OIL LEVEL		01	0810-			0															
	27 001 1		11150-54T00	GUIDE-OIL LEVEL GAUGE		01	0810-			0															
	28 001 1		15056-02N00	O RING		01	0810-			0															
	29 001 1		13081-40K00	JET-OIL, TIMING CHAIN		01	0810-			0															
	30 001 1		KP710-00150	GASKET-LIQUID		AR	0810-			0															

# SEC. 111 CYLINDER HEAD & ROCKER COVER

[200810- ]



POTD2A310111\_A

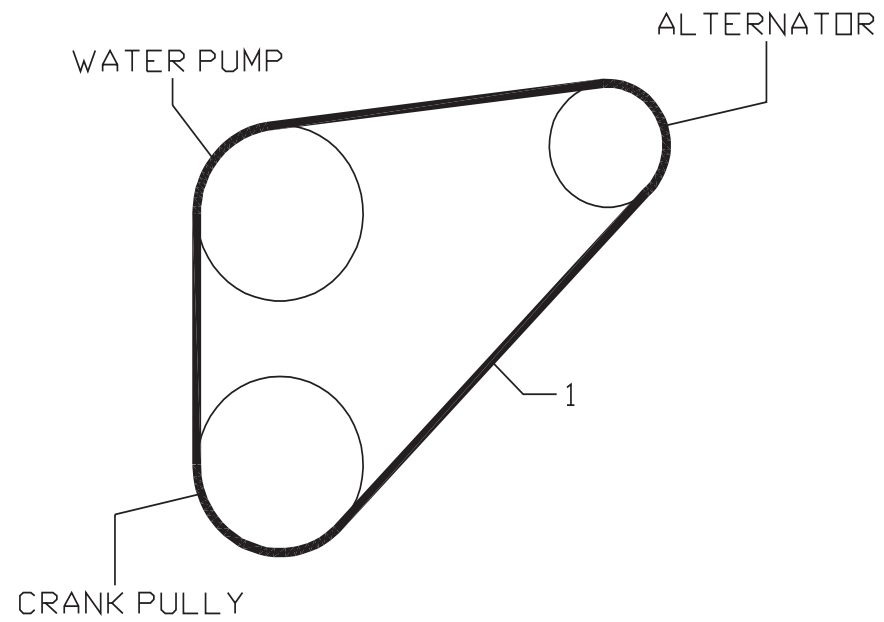
# SEC. 111 CYLINDER HEAD & ROCKER COVER

APPLIED MODEL																										
1	0	1	0	0	0	0	0	0	0	0	1	1	1	1	1	1	1	1	2	2	2	2	2	2	2	3
0	0	0	0	0	0	0	0	0	0	0	1	1	1	1	1	1	1	2	2	2	2	2	2	2	3	
F	F	F	F	F	F	F	F	F	F	F	F	F	F	F	F	F	F	F	F	F	F	F	F	F	F	
4	4	4	4	4	4	4	4	4	4	4	4	4	4	4	4	4	4	4	4	4	4	4	4	4	4	
6	6	6	6	6	6	6	6	6	6	6	6	6	6	6	6	6	6	6	6	6	6	6	6	6	6	
C	C	C	C	C	C	C	C	C	C	C	C	C	C	C	C	C	C	C	C	C	C	C	C	C	C	

S	KEY NO.	LEV	PART NO.	PART NAME	SPECIFICATION	QTY	APPLIED DATE	ICAF	FORMER PART NO.
	1	001	11039-40K02	HEAD ASSY-CYLINDER		01	0810-		
	2	001	11098-45N00	SEAT-VALVE,INTAKE		04	0810-		
	3	001	11099-45N00	SEAT-VALVE,EXHAUST	STD	04	0810-		
		002	-45N10		OS=0.2	04	0810-		
		003	-45N11		OS=0.4	04	0810-		
	4	001	11076-40K01	CHAMBER ASSY-COMBUSTION		04	0810-		
	5	001	01648-00024	PLUG-WELCH		14	0810-		
	6	001	01648-00044	PLUG-WELCH		04	0810-		
	7	001	16650-43G01	SUPPORT-NOZZLE		08	0810-		
	8	001	16625-43G02	WASHER-NPZZLE		08	0810-		
	9	001	13212-54T01	GUIDE-INLET VALVE		08	0810-		
	10	001	11056-09D61	BOLT-CYLINDER HEAD		18	0810-		
	11	001	11044-43G01	GASKET-CYLINDER HEAD	T=1.20	01	0810-		
		002	-43G02		T=1.25	01	0810-		
		003	-43G03		T=1.30	01	0810-		
	12	001	10006-43G00	SLINGER-ENGINE,REAR		01	0810-		
	13	001	24211-89944	CLIP-HARNESS		01	0810-		
	14	001	13265-02N02	COVER ASSY-VALVE ROCKER		01	0810-		
	15	001	13270-43G03	GASKET-ROCKER COVER		01	0810-		
	16	001	13268-D010C	WASHER		10	0810-		
	17	001	13268-29NOA	WASHER		10	0810-		
	18	001	13224-0W800	BOLT		10	0810-		
	19	001	15255-D5502	CAP ASSY-OIL FILLER		01	0810-		
	20	001	15270-D0103	PACKING-OIL FILLER CAP		01	0810-		

**SEC. 117**  
**FAN,COMPRESSOR & POWER STEERING BELT**

[200810- ]

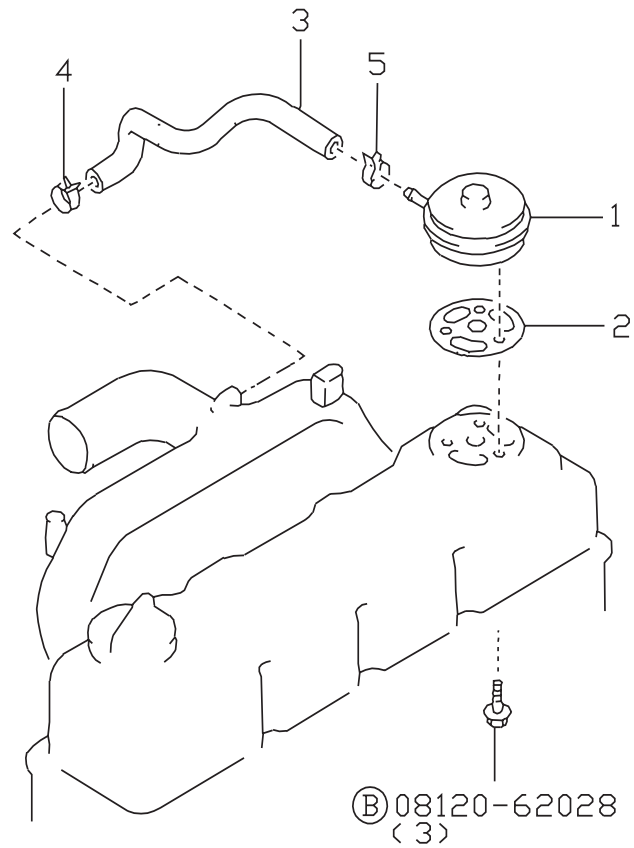


P0TD2A310117\_A



# SEC. 118 CRANK CASE VENTILATION

[200810- ]



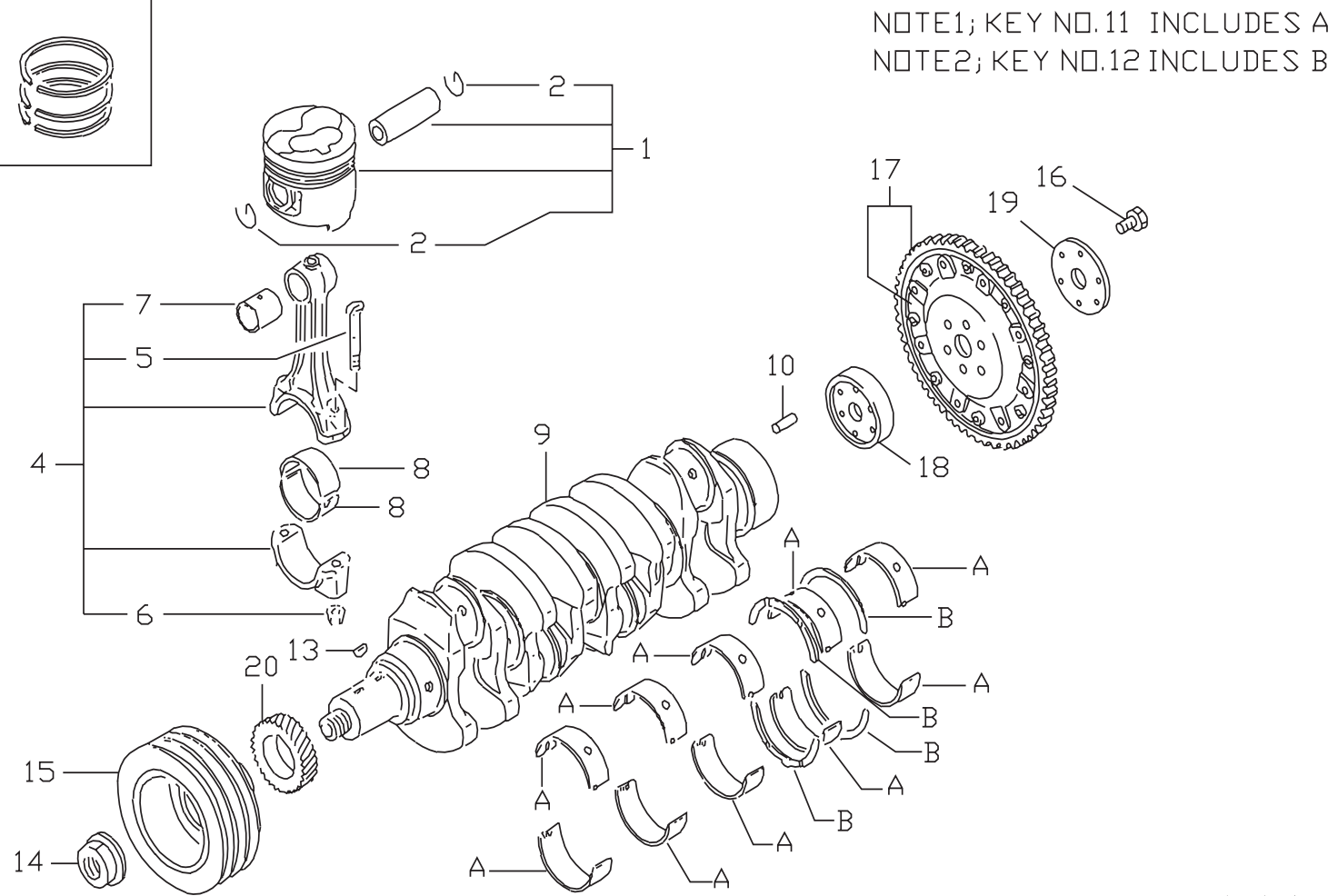
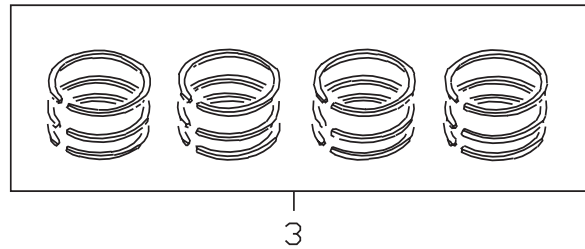
P0TD2A310118\_A



# SEC. 120

## PISTON, CRANKSHAFT & FLYWHEEL

[200810- ]



NOTE1; KEY NO.11 INCLUDES A  
NOTE2; KEY NO.12 INCLUDES B

POTD2A310120\_A

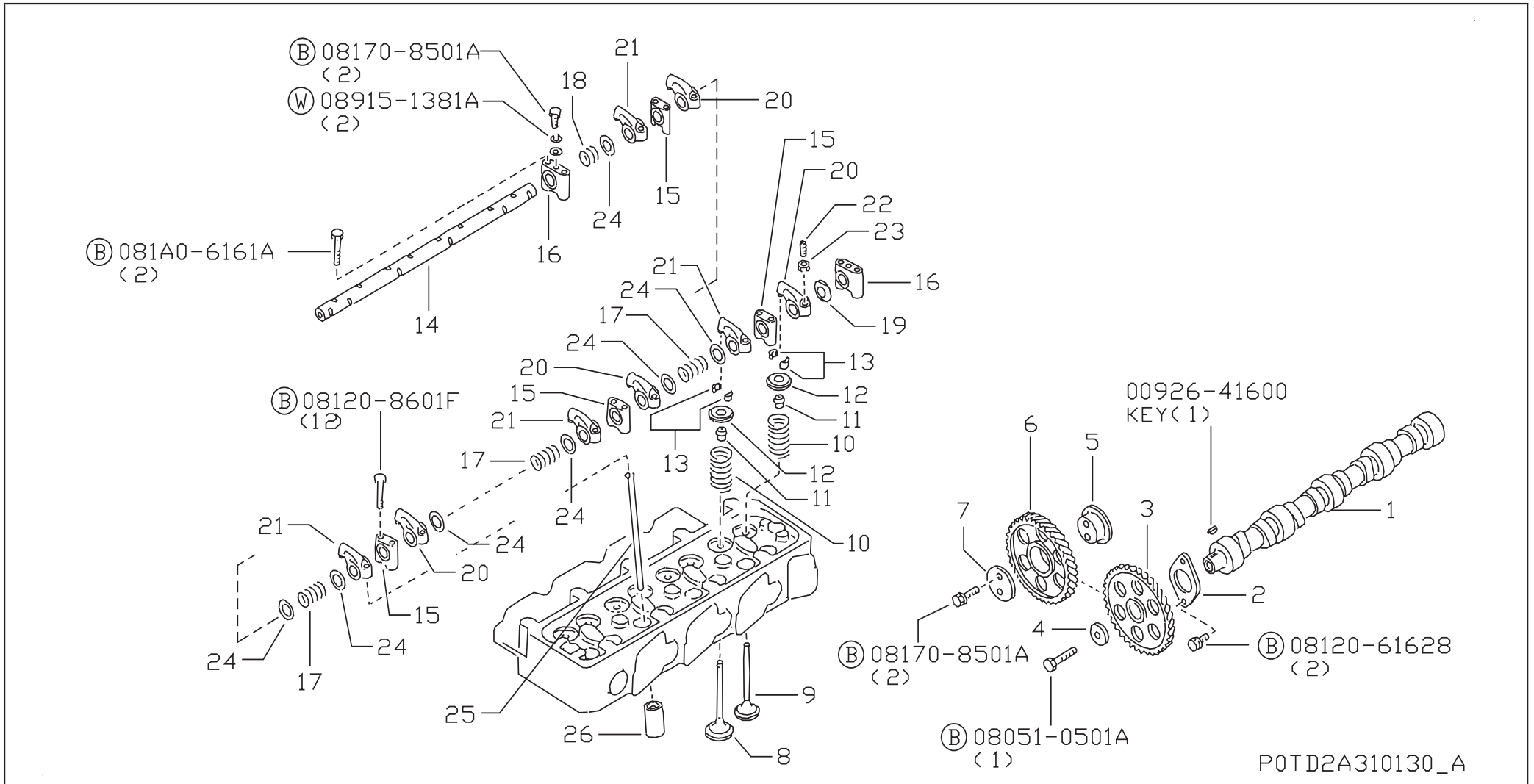
# SEC. 120 PISTON,CRANKSHAFT & FLYWHEEL

APPLIED MODEL																										
1	0	1	0	0	0	0	0	0	0	0	1	1	1	1	1	1	1	1	2	2	2	2	2	2	2	3
0	0	0	0	0	0	0	0	0	0	0	0	0	0	0	0	0	0	0	0	0	0	0	0	0	0	
F	F	F	F	F	F	F	F	F	F	F	F	F	F	F	F	F	F	F	F	F	F	F	F	F	F	
4	4	4	4	4	4	4	4	4	4	4	4	4	4	4	4	4	4	4	4	4	4	4	4	4	4	
6	6	6	6	6	6	6	6	6	6	6	6	6	6	6	6	6	6	6	6	6	6	6	6	6	6	
C	C	C	C	C	C	C	C	C	C	C	C	C	C	C	C	C	C	C	C	C	C	C	C	C	C	

S	KEY NO.	LEV	PART NO.	PART NAME	SPECIFICATION	QTY	APPLIED DATE	ICANF	FORMER PART NO.
	1 001 1		12010-6T005	PISTON,W/PIN	GRADE 1	04	0810-		
	002 1		-6T015		GRADE 2	04	0810-		
	2 001 2		12032-54T00	RING-SNAP,PISTON PIN		08	0810-		
	3 001 1		12033-6T011	RING-SNAP,PISTON PIN	STD	01	0810-		
	4 001 1		12100-0W802	ROD COMPL-CONNECTING		04	0810-		
	5 001 2		12109-43G00	BOLT-CONNECTING ROD		08	0810-		
	6 001 2		12112-43G00	NUT-CONNECTING ROD		08	0810-		
	7 001 2		12030-31N00	BUSHING		04	0810-		
	8 001 1		12111-2W20A	BEARING-CONNECTING ROD	STD	08	0810-		
	002 1		12117-2W20A		US=0.25	08	0810-		
	003 1		12118-2W20A		US=0.50	08	0810-		
	004 1		12119-2W20A		US=0.75	08	0810-		
	005 1		12120-2W20A		US=1.00	08	0810-		
	9 001 1		12200-6T00B	CRANKSHAFT ASSY		01	0810-		
	10 001 1		01522-10224	PIN-SPRING		01	0810-		
	11 001 1		12207-MA70A	BEARING SET-CRANKSHAFT	STD	01	0810-		
	002 1		12209-MA70A		US=0.25	01	0810-		
	003 1		12210-MA70A		US=0.50	01	0810-		
	004 1		12211-MA70A		US=0.75	01	0810-		
	005 1		12212-MA70A		US=1.00	01	0810-		
	12 001 1		12280-37503	WASHER SET-THRUST	T=2.325	02	0810-		
	002 1		-37504		T=2.350	02	0810-		
	003 1		-37505		T=2.375	02	0810-		
	004 1		-37528			02	0810-		
	005 1		12320-37502			02	0810-		
	006 1		12280-37529			02	0810-		
	13 001 1		12205-76200	KEY		02	0810-		
	14 001 1		12309-61503	NUT-PULLEY,CRANKSHAFT		01	0810-		
	15 001 1		12304-41K01	PULLEY-CRANKSHAFT		01	0810-		
	16 001 1		12315-2W200	BOLT-FLYWHEEL		06	0810-		
	17 001 1		12331-40K0A	PLATE ASSY-DRIVE		01	0810-		
	18 001 1		12330-40K00	PILOT-CONVERTER		01	0810-		
	19 001 1		12333-02N01	SPACER-CRANKSHAFT,END		01	0810-		
	20 001 1		13021-43G01	SPROCKET-CRANKSHAFT		01	0810-		

# SEC. 130 CAMSHAFT & VALVE MECHANISM

[200810- ]



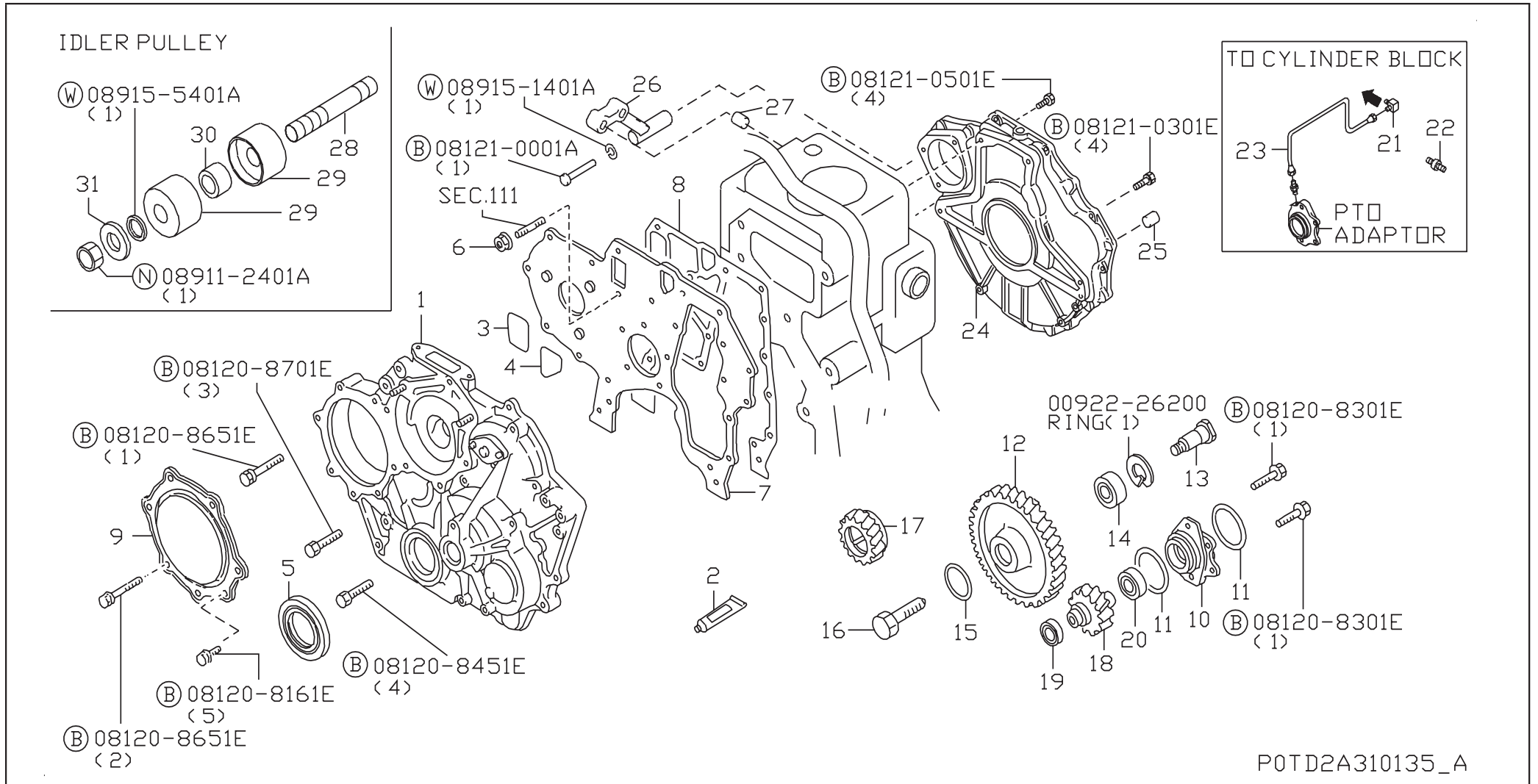
# SEC. 130 CAMSHAFT & VALVE MECHANISM

APPLIED MODEL																										
1																										
0																										
1																										
0																										
0																										
F																										
F																										
4																										
6																										
C																										

S	KEY NO.	LEV	PART NO.	PART NAME	SPECIFICATION	QTY	APPLIED DATE	ICANF	FORMER PART NO.
	1	001	13001-54T03	CAMSHAFT ASSY		01	0810-		
	2	001	13010-06J00	PLATE-LOCATING, CAMSHAFT		01	0810-		
	3	001	13024-0T600	SPROCKET-CAMSHAFT		01	0810-		
	4	001	13030-37500	WASHER-CAM SPROCKET		01	0810-		
	5	001	13016-54T0A	SHAFT-IDLER SPROCKET		01	0810-		
	6	001	13012-54T00	GEAR ASSY-IDLER		01	0810-		
	7	001	13011-43G00	PLATE-IDLER GEAR		01	0810-		
	8	001	13201-43G01	VALVE-INTAKE		04	0810-		
	9	001	13202-43G01	VALVE-EXHAUST		04	0810-		
	10	001	13203-90010	SPRING-VALVE		08	0810-		
	11	001	13207-V170A	SEAL-OIL VALVE STEM		08	0810-		
	12	001	13209-43G01	RETAINER-VALVE SPRING		08	0810-		
	13	001	13208-Z5500	COLLET-VALVE		16	0810-		
	14	001	13252-43G02	SHAFT ASSY-VALVE ROCKER		01	0810-		
	15	001	13222-43G00	BRACKET-ROCKER SHAFT		04	0810-		
	16	001	13223-43G01	BRACKET-ROCKER SHAFT		02	0810-		
	17	001	13256-43G01	SPRING-OUTSIDE VALVE ROCKER		03	0810-		
	18	001	13256-43G02	SPRING-VALVE ROCKER		01	0810-		
	19	001	13255-43G00	SPRING-ROCKER		01	0810-		
	20	001	13257-63G01	ROCKER ASSY-VALVE		04	0810-		
	21	001	13258-63G01	ARM-VALVE ROCKER		04	0810-		
	22	001	13234-43G01	SCREW-ADJUST, VALVE ROCKER		08	0810-		
	23	001	01225-00112	NUT-ADJUST SCREW		08	0810-		
	24	001	13297-43G00	WASHER-CAM SPROCKET		08	0810-		
	25	001	13238-43G00	ROD-PUSH		08	0810-		
	26	001	13231-54T02	LIFTER-VALVE		08	0810-		

# SEC. 135 FRONT COVER & FITTING

[200810- ]

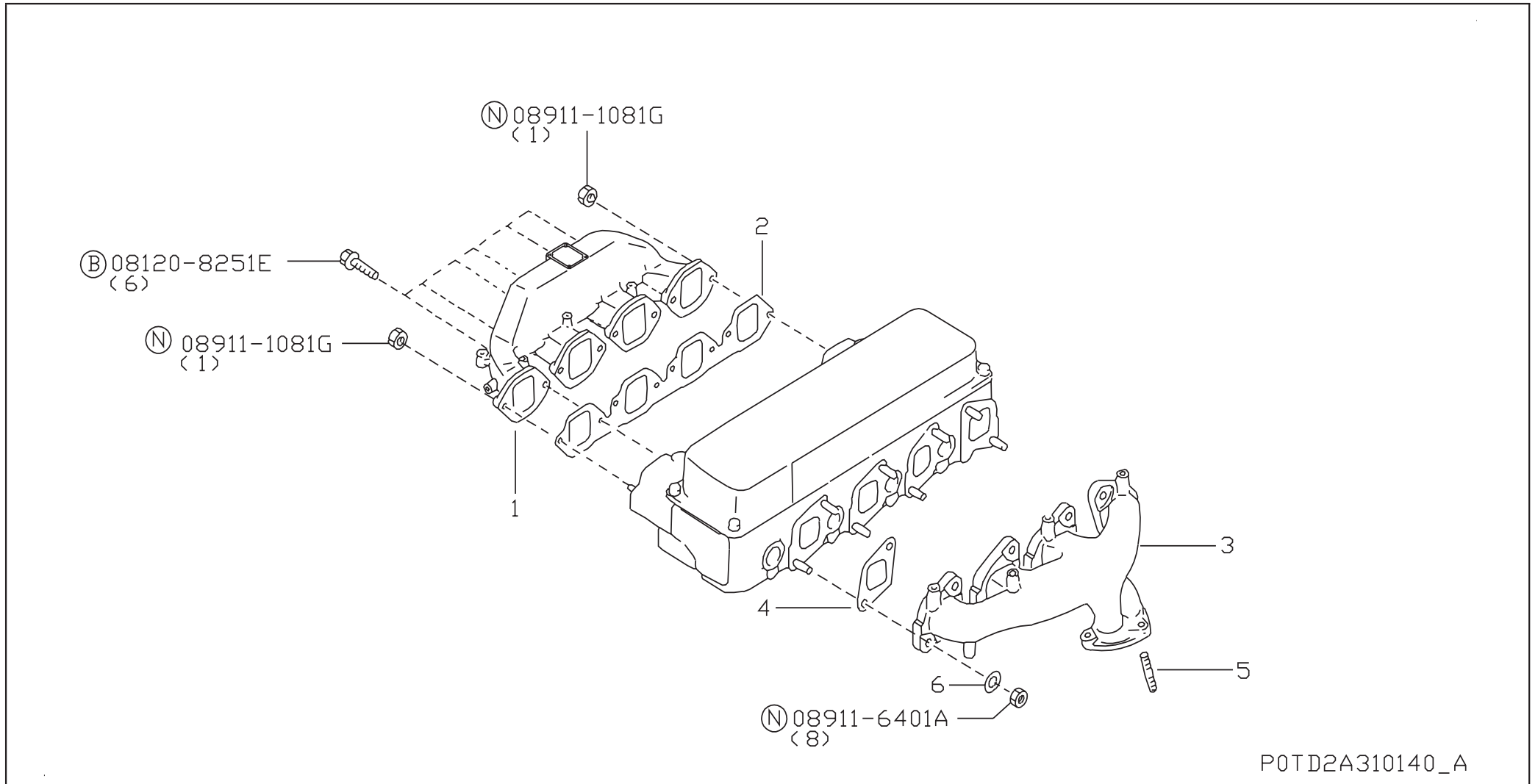


# SEC. 135 FRONT COVER & FITTING

APPLIED MODEL																										
1	0	1	0	0	0	0	0	0	0	1	1	1	1	1	1	1	1	1	2	2	2	2	2	2	2	3
0	0	0	0	0	0	0	0	0	0	0	0	0	0	0	0	0	0	0	0	0	0	0	0	0	0	
F	F	F	F	F	F	F	F	F	F	F	F	F	F	F	F	F	F	F	F	F	F	F	F	F	F	
4	4	4	4	4	4	4	4	4	4	4	4	4	4	4	4	4	4	4	4	4	4	4	4	4	4	
6	6	6	6	6	6	6	6	6	6	6	6	6	6	6	6	6	6	6	6	6	6	6	6	6	6	
C	C	C	C	C	C	C	C	C	C	C	C	C	C	C	C	C	C	C	C	C	C	C	C	C	C	
S	KEY NO.	LEV	PART NO.	PART NAME	SPECIFICATION	QTY	APPLIED DATE	ICANF	FORMER PART NO.	0	0	0	0	0	0	0	0	0	0	0	0	0	0	0	0	
	1 001 1		13034-NA02A	HOUSING-TIMING CHAIN		01	0810-			0	0	0	0	0	0	0	0	0	0	0	0	0	0	0	0	
	2 001 1		KP710-00150	GASKET-FR COVER		AR	0810-			0	0	0	0	0	0	0	0	0	0	0	0	0	0	0	0	
	3 001 1		14465-43G20	SEAL-RUBBER		01	0810-			0	0	0	0	0	0	0	0	0	0	0	0	0	0	0	0	
	4 001 1		14465-43G21	SEAL-RUBBER		01	0810-			0	0	0	0	0	0	0	0	0	0	0	0	0	0	0	0	
	5 001 1		13510-40K01	SEAL-OIL		01	0810-			0	0	0	0	0	0	0	0	0	0	0	0	0	0	0	0	
	6 001 1		16132-43G00	NUT		01	0810-			0	0	0	0	0	0	0	0	0	0	0	0	0	0	0	0	
	7 001 1		13031-41K00	PLATE-ENGINE		01	0810-			0	0	0	0	0	0	0	0	0	0	0	0	0	0	0	0	
	8 001 1		13037-54T01	GASKET-COVER		01	0810-			0	0	0	0	0	0	0	0	0	0	0	0	0	0	0	0	
	9 001 1		13560-54T00	COVER ASSY-FRONT		01	0810-			0	0	0	0	0	0	0	0	0	0	0	0	0	0	0	0	
	10 001 1		69190-41K01	BRACKET-HID OIL PUMP		01	0810-			0	0	0	0	0	0	0	0	0	0	0	0	0	0	0	0	
	11 001 1		69170-L1400	SEAL-O RING		01	0810-			0	0	0	0	0	0	0	0	0	0	0	0	0	0	0	0	
	12 001 1		13014-41K00	GEAR-IDLER		01	0810-			0	0	0	0	0	0	0	0	0	0	0	0	0	0	0	0	
	13 001 1		13016-41K00	SHAFT-IDLER		01	0810-			0	0	0	0	0	0	0	0	0	0	0	0	0	0	0	0	
	14 001 1		33379-40K00	BEARING-IDELER SHAFT		01	0810-			0	0	0	0	0	0	0	0	0	0	0	0	0	0	0	0	
	15 001 1		01001-20024	BEARING-BALL		01	0810-			0	0	0	0	0	0	0	0	0	0	0	0	0	0	0	0	
	16 001 1		01125-00104	BOLT		01	0810-			0	0	0	0	0	0	0	0	0	0	0	0	0	0	0	0	
	17 001 1		13021-40K00	SPROCKET-CRANKSHAFT		01	0810-			0	0	0	0	0	0	0	0	0	0	0	0	0	0	0	0	
	18 001 1		33320-40K00	GEAR-OUTPUT		01	0810-			0	0	0	0	0	0	0	0	0	0	0	0	0	0	0	0	
	19 001 1		01011-00074	BEARING-BALL		01	0810-			0	0	0	0	0	0	0	0	0	0	0	0	0	0	0	0	
	20 001 1		33378-40K00	BEARING-OUTPUT SHAFT		01	0810-			0	0	0	0	0	0	0	0	0	0	0	0	0	0	0	0	
	21 001 1		15191-41K00	CONNECTOR		01	0810-			0	0	0	0	0	0	0	0	0	0	0	0	0	0	0	0	
	22 001 1		01612-11134	CONNECTOR		01	0810-			0	0	0	0	0	0	0	0	0	0	0	0	0	0	0	0	
	23 001 1		15192-41K00	TUBE ASSY-OIL		01	0810-			0	0	0	0	0	0	0	0	0	0	0	0	0	0	0	0	
	24 001 1		12320-40K01	HOUSING ASSY-FLYWHEEL		01	0810-			0	0	0	0	0	0	0	0	0	0	0	0	0	0	0	0	
	25 001 1		12313-L1122	DOWEL-PIN		02	0810-			0	0	0	0	0	0	0	0	0	0	0	0	0	0	0	0	
	26 001 1		30430-90013	GASSSET-CYLINDER BLOCK		02	0810-			0	0	0	0	0	0	0	0	0	0	0	0	0	0	0	0	
	27 001 1		01931-00134	SPACER		04	0810-			0	0	0	0	0	0	0	0	0	0	0	0	0	0	0	0	
	28 001 1		14065-41K00	STUD		01	0810-			0	0	0	0	0	0	0	0	0	0	0	0	0	0	0	0	
	29 001 1		11914-41K00	BUSH		02	0810-			0	0	0	0	0	0	0	0	0	0	0	0	0	0	0	0	
	30 001 1		01931-00394	SPACER		01	0810-			0	0	0	0	0	0	0	0	0	0	0	0	0	0	0	0	
	31 001 1		21113-90003	WASHER		01	0810-			0	0	0	0	0	0	0	0	0	0	0	0	0	0	0	0	

# SEC. 140 MANIFOLD

[200810- ]

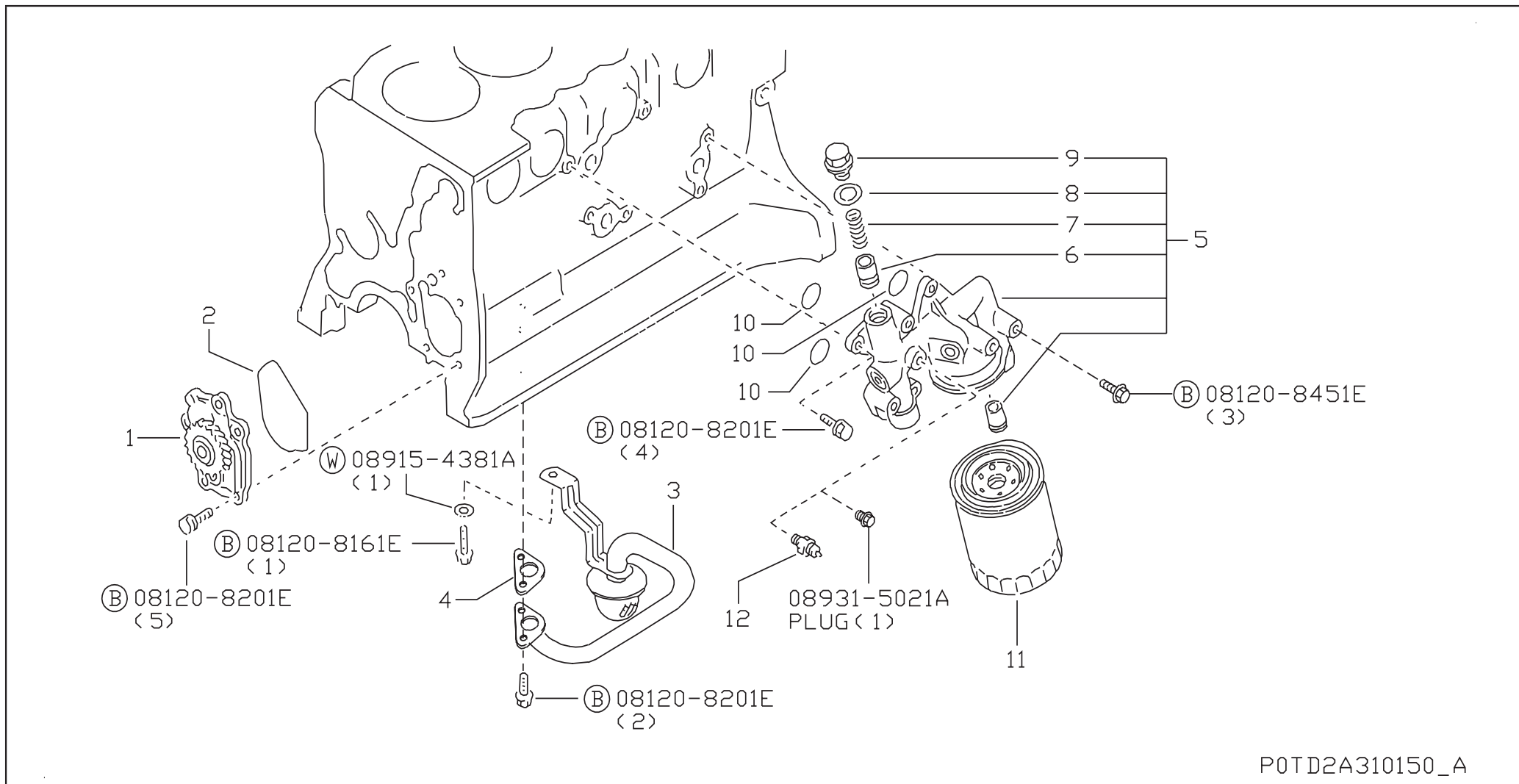


P0TD2A310140\_A



# SEC. 150 LUBRICATING SYSTEM

[200810- ]



P0TD2A310150\_A

# SEC. 150 LUBRICATING SYSTEM

APPLIED MODEL																												
1 0 1 0 0 F F 4 6 C																												
	0	0	0	0	0	0	0	0	1	1	1	1	1	1	1	1	1	1	2	2	2	2	2	2	2	2	3	0
S	KEY NO.	LEV	PART NO.	PART NAME	SPECIFICATION	QTY	APPLIED DATE	ICAF	FORMER PART NO.																			
	1 001 1		15010-43G06	PUMP ASSY-OIL		01	0810-			○																		
	2 001 1		15025-43G01	GASKET-OIL PUMP		01	0810-			○																		
	3 001 1		15050-02N01	STRAINER-OIL		01	0810-			○																		
	4 001 1		15053-80G00	GASKET-OIL STRAINER		01	0810-			○																		
	5 001 1		15238-2S60B	BRACKET-OIL FILTER		01	0810-			○																		
	6 001 2		15132-43G01	VALVE ASSY-OIL REGULATOR		01	0810-			○																		
	7 001 2		15133-06J01	SPRING-VALVE		01	0810-			○																		
	8 001 2		05412-1800P	WASHER		01	0810-			○																		
	9 001 2		15134-MA70A	CAP-VALVE		01	0810-			○																		
	10 001 1		21334-02N00	SEAL-O RING		03	0810-			○																		
	11 001 1		15208-43G0A	FILTER ASSY-OIL		01	0810-			○																		
	12 001 1		25240-Z550A	SWITCH ASSY-OIL PRESSURE		01	0810-			○																		



# GROUP INDEX

## FUEL, ENGINE & MOTOR CONTROL

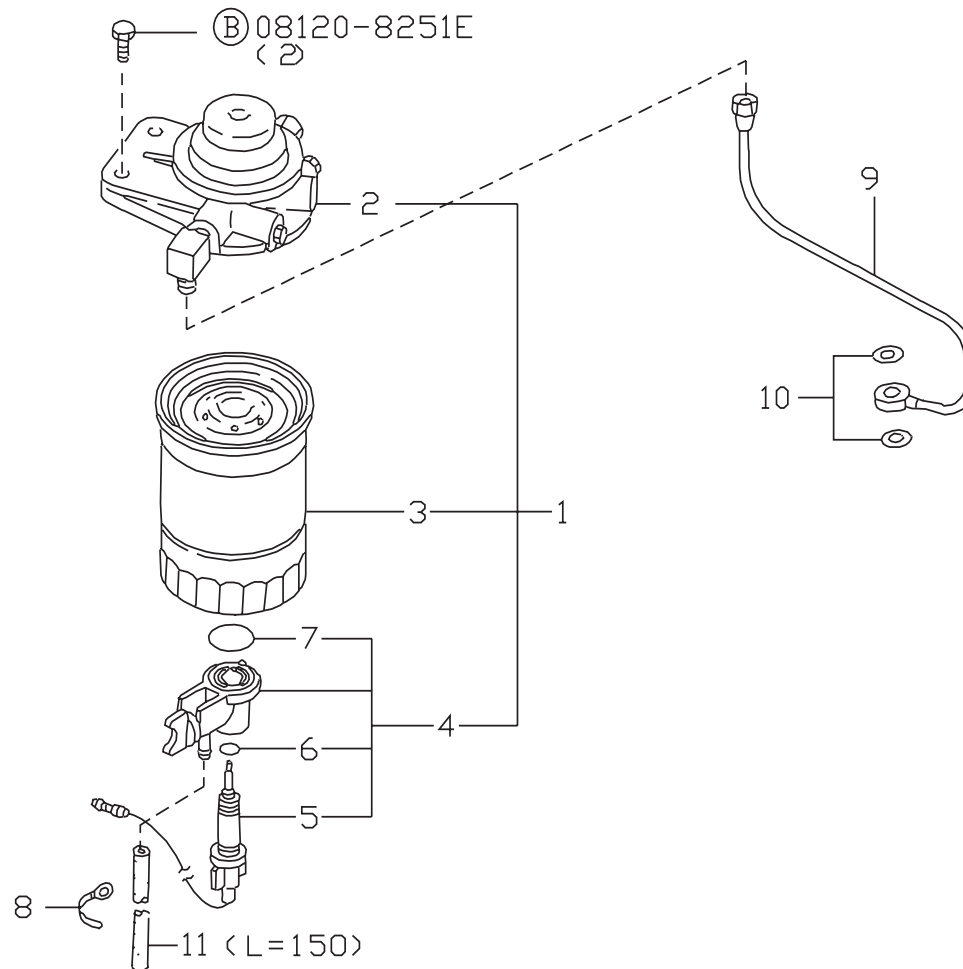
SEC. NO.	SECTION NAME	PAGE NO.
164	FUEL STRAINER & FUEL HOSE .....	28
185	FUEL SUPPLY SYSTEM .....	30
186	FUEL INJECTION PUMP .....	32

**B**

# SEC. 164

## FUEL STRAINER & FUEL HOSE

[200810- ]



P0TD2A310164\_A

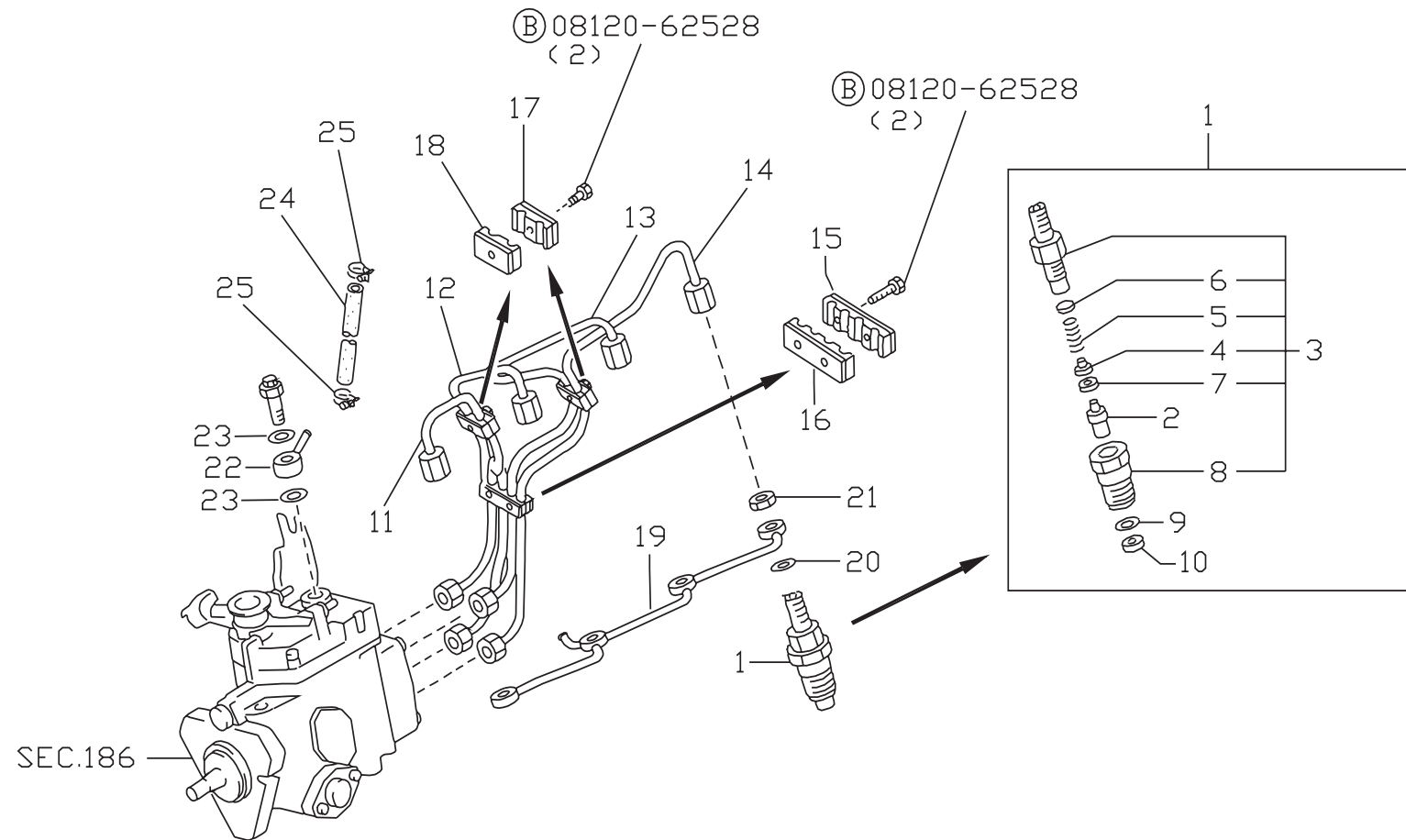
# SEC. 164

## FUEL STRAINER & FUEL HOSE

APPLIED MODEL																													
S	KEY NO.	LEV	PART NO.	PART NAME	SPECIFICATION	QTY	APPLIED DATE	ICAF	FORMER PART NO.	1	2	3	4	5	6	7	8	9	0	1	2	3	4	5	6	7	8	9	0
										0	0	0	0	0	0	0	0	0	0	0	0	0	0	0	0	0	0	0	0
	1	001	1	16400-41K00	FILTER ASSY-FUEL		010810-			○																			
	2	001	2	16401-41K00	BODY ASSY-FILTER		010810-			○																			
	3	001	2	16405-T9005	CARTRIDGE ASSY		010810-			○																			
	4	001	2	16413-10H00	SENSOR ASSY		010810-			○																			
	5	001	3	16412-10H00	SENSOR ASSY		010810-			○																			
	6	001	3	16407-T9001	SEAL-O RING		010810-			○																			
	7	001	3	16406-T9001	SEAL-O RING		010810-			○																			
	8	001	1	24211-89944	CLIP		020810-			○																			
	9	001	1	17521-41K00	TUBE ASSY-FUEL FEED PUMP TO FUEL FILTER		010810-			○																			
	10	001	1	16794-10G00	GASKET-CONNECTOR		020810-			○																			
	11	001	1	A7335-U0110	TUBE-VINYL	L=150 CUT USE	AR0810-			○																			

# SEC. 185 FUEL SUPPLY SYSTEM

[200810- ]



P0TD2A310185\_A

# SEC. 185 FUEL SUPPLY SYSTEM

APPLIED MODEL																												
1	0	1	0	0	0	0	0	0	0	0	0	1	1	1	1	1	1	1	1	2	2	2	2	2	2	2	2	3
0	0	0	0	0	0	0	0	0	0	0	0	0	0	0	0	0	0	0	0	0	0	0	0	0	0	0	0	
F																												
F																												
4																												
6																												
C																												

S	KEY NO.	LEV	PART NO.	PART NAME	SPECIFICATION	QTY	APPLIED DATE	ICANF	FORMER PART NO.
	1 001	1	16600-43G23	NOZZLE & HOLDER ASSY		04	0810-		
	2 001	2	16620-43G02	NOZZLE ASSY		08	0810-		
	3 001	2	16610-43G01	HOLDER ASSY		08	0810-		
	4 001	3	16612-43G00	PUSH ROD		08	0810-		
	5 001	3	16615-43G00	SPRING		08	0810-		
	6 001	3	16613-43G00	WASHER	T=0.1	AR	0810-		
	002	3	-43G01		T=0.2	AR	0810-		
	003	3	-43G02		T=0.3	AR	0810-		
	004	3	-43G03		T=0.4	AR	0810-		
	005	3	-43G04		T=0.5	AR	0810-		
	006	3	-43G05		T=0.52	AR	0810-		
	007	3	-43G06		T=0.54	AR	0810-		
	008	3	-43G07		T=0.56	AR	0810-		
	009	3	-43G08		T=0.58	AR	0810-		
	010	3	-43G09		T=0.8	AR	0810-		
	7 001	3	16616-43G00	PIECE-DISTANCE		08	0810-		
	8 001	3	16629-43G01	NUT		08	0810-		
	9 001	2	16625-43G00	GASKET		08	0810-		
	10 001	2	16626-43G00	GASKET		08	0810-		
	11 001	1	16680-40K00	TUBE ASSY-INJECTION,N01		01	0810-		
	12 001	1	16681-40K00	TUBE ASSY-INJECTION,N02		01	0810-		
	13 001	1	16682-40K00	TUBE ASSY-INJECTION,N03		01	0810-		
	14 001	1	16683-40K00	TUBE ASSY-INJECTION,N04		01	0810-		
	15 001	1	16696-43GOB	CLAMP-TUBE		01	0810-		
	16 001	1	16697-21NOA	SEAL-RUBBER		01	0810-		
	17 001	1	16698-43GOB	STAY-TUBE		02	0810-		
	18 001	1	16699-43GOA	STAY-TUBE		02	0810-		
	19 001	1	16670-43GOA	TUBE-SPILL		01	0810-		
	20 001	1	16627-43G00	GASKET		04	0810-		
	21 001	1	16666-43GOA	NUT		04	0810-		
	22 001	1	16678-43GOA	TUBE-FUEL		01	0810-		
	23 001	1	16794-10G00	GASKET		02	0810-		
	24 001	1	16446-2S000	HOSE-FUEL		01	0810-		
	25 001	1	01558-00401	CLIP		02	0810-		





# SEC. 186 FUEL INJECTION PUMP

APPLIED MODEL																												
1	0	1	0	0	0	0	0	0	0	0	1	1	1	1	1	1	1	1	2	2	2	2	2	2	2	2	2	3
0	0	0	0	0	0	0	0	0	0	0	1	1	1	1	1	1	1	1	2	2	2	2	2	2	2	2	2	3
F	F	F	F	F	F	F	F	F	F	F	F	F	F	F	F	F	F	F	F	F	F	F	F	F	F	F	F	F
4	4	4	4	4	4	4	4	4	4	4	4	4	4	4	4	4	4	4	4	4	4	4	4	4	4	4	4	4
6	6	6	6	6	6	6	6	6	6	6	6	6	6	6	6	6	6	6	6	6	6	6	6	6	6	6	6	6
C	C	C	C	C	C	C	C	C	C	C	C	C	C	C	C	C	C	C	C	C	C	C	C	C	C	C	C	C
S	KEY NO.	LEV	PART NO.	PART NAME	SPECIFICATION	QTY	APPLIED DATE	ICANF	FORMER PART NO.	0	0	0	0	0	0	0	0	0	0	0	0	0	0	0	0	0	0	0
	36	001	2	16815-43G00	BOLT		02 0810-			0																		
	37	001	2	16764-V0700	SHIM		01 0810-			0																		
	38	001	2	16765-V0700	WASHER-PLUNGER		01 0810-			0																		
	39	001	2	16766-43G00	SEAT-SPRING, PLUNGER		01 0810-			0																		
	40	001	2	16767-V0700	SPRING-PLUNGER		01 0810-			0																		
	41	001	2	16768-V0700	SEAT-SPRING		02 0810-			0																		
	42	001	2	16882-V0701	SHIM	T=0.8	AR 0810-			0																		
		002	2	-V0702		T=1.0	AR 0810-			0																		
		003	2	-V0703		T=1.2	AR 0810-			0																		
		004	2	-V0704		T=1.5	AR 0810-			0																		
		005	2	-87G00		T=0.9	AR 0810-			0																		
		006	2	-87G01		T=1.1	AR 0810-			0																		
		007	2	-87G02		T=1.3	AR 0810-			0																		
		008	2	-06J00		T=1.4	AR 0810-			0																		
		009	2	-06J01		T=1.6	AR 0810-			0																		
	43	001	2	16550-99005	GUIDE-ROLLER		02 0810-			0																		
	44	001	2	16760-43G00	HEAD-DISTRIBUTOR		01 0810-			0																		
	45	001	2	16781-V0700	SEAL-O RING		01 0810-			0																		
	46	001	2	16884-06J00	SHIM	T=1.94	AR 0810-			0																		
		002	2	16742-R8101		T=2.04	AR 0810-			0																		
		003	2	16884-06J01		T=2.14	AR 0810-			0																		
		004	2	-V0704		T=2.24	AR 0810-			0																		
		005	2	-06J02		T=2.34	AR 0810-			0																		
		006	2	16742-R8106		T=2.44	AR 0810-			0																		
		007	2	16884-06J03		T=2.54	AR 0810-			0																		
		008	2	-V0709		T=2.64	AR 0810-			0																		
		009	2	-06J04		T=1.84	AR 0810-			0																		
	47	001	2	16777-V0701	GASKET-DELIVERY VALVE		04 0810-			0																		
	48	001	2	16776-R8100	VALVE-DELIVERY		04 0810-			0																		
	49	001	2	16775-V0700	SPRING-DELIVERY VALVE		04 0810-			0																		
	50	001	2	16770-V0700	HOLDER-DELIVERY VALVE		04 0810-			0																		
	51	001	2	16782-V0700	SCREW		03 0810-			0																		
	52	001	2	19240-40K01	COVER ASSY-GOVERNOR		01 0810-			0																		
	53	001	2	19230-10H00	SHAFT ASSY-CONTROL		01 0810-			0																		
	54	001	2	19235-V0700	SEAL-O RING		01 0810-			0																		
	55	001	2	19236-V0700	WASHER		02 0810-			0																		
	56	001	2	16705-40K00	LEVER-CONTROL	CENTER LINE 111	AR 0810-			0																		
		002	2	-40K01		CENTER LINE 112	AR 0810-			0																		
	57	001	2	19260-37502	WASHER-SPRING		02 0810-			0																		
	58	001	2	19275-40K00	SHAFT-STOP LEVER		01 0810-			0																		

# SEC. 186 FUEL INJECTION PUMP

APPLIED MODEL																																					
S	KEY NO.	LEV	PART NO.	PART NAME	SPECIFICATION	QTY	APPLIED DATE	ICANF	FORMER PART NO.	1	0	0	0	0	0	0	0	0	1	1	1	1	1	1	1	1	2	2	2	2	2	2	2	3			
										0	1	2	3	4	5	6	7	8	9	0	1	2	3	4	5	6	7	8	9	0	1	2	3	4	5	6	7
	59	001	2	19271-35V00	SPRING		01 0810-			○																											
	60	001	2	19272-35V00	SEAL-O RING		01 0810-			○																											
	61	001	2	19273-35V00	WASHER		01 0810-			○																											
	62	001	2	19243-16A00	NUT-ADJUST		01 0810-			○																											
	63	001	2	19270-35V00	LEVER-STOP		01 0810-			○																											
	64	001	2	19243-16A00	NUT-ADJUST		01 0810-			○																											
	65	001	2	19244-R8800	SCREW		01 0810-			○																											
	66	001	2	19244-06J02	SCREW		01 0810-			○																											
	67	001	2	19221-R8100	SPRING		01 0810-			○																											
	68	001	2	16707-V2100	ANGLE-GOVERNOR LEVER		01 0810-			○																											
	69	001	2	16702-54T00	SPRING-RETURN		01 0810-			○																											
	70	001	2	16706-V2100	SPRING-SEAT		01 0810-			○																											
	71	001	2	19264-35V00	BOLT		01 0810-			○																											
	72	001	2	19242-69T00	SEAL-RING, COVER		01 0810-			○																											
	73	001	2	19296-V0700	WASHER		01 0810-			○																											
	74	001	2	19290-43G00	SCREW	L=53	AR 0810-			○																											
		002	2	-43G01		L=55	AR 0810-			○																											
		003	2	-06J01		L=55	AR 0810-			○																											
		004	2	-43G02		L=57	AR 0810-			○																											
	75	001	2	19297-V0700	NUT		01 0810-			○																											
	76	001	2	19295-V0700	SEAL-O RING		01 0810-			○																											
	77	001	2	19251-40K00	LEVER-GOVERNOR		01 0810-			○																											
	78	001	2	19252-43G00	BOLT		02 0810-			○																											
	79	001	2	19253-V0700	GASKET		02 0810-			○																											
	80	001	2	19244-43G00	SPRING		02 0810-			○																											
	81	001	2	19212-35V00	NUT		01 0810-			○																											
	82	001	2	19210-16A00	SHAFT-GOVERNOR		01 0810-			○																											
	83	001	2	19211-V0700	SEAL-O RING		01 0810-			○																											
	84	001	2	19208-V0700	SHIM	T=1.05	AR 0810-			○																											
		002	2	-V0701		T=1.25	AR 0810-			○																											
		003	2	-V0702		T=1.45	AR 0810-			○																											
		004	2	-V0703		T=1.65	AR 0810-			○																											
		005	2	-V0704		T=1.85	AR 0810-			○																											
	85	001	2	19209-V0700	WASHER		01 0810-			○																											
	86	001	2	19200-V0700	HOLDER-FLY WEIGHT		01 0810-			○																											
	87	001	2	19202-40K00	WEIGHT KIT-FLY		01 0810-			○																											
	88	001	2	19204-40K00	SHAFT-GOVERNORCOVER		01 0810-			○																											
	89	001	2	19205-40K02	SLEEVE-GOVERNOR		01 0810-			○																											
	90	001	2	19206-01T00	CAP-GOVERNOR		01 0810-			○																											
	91	001	2	19207-40K00	PLUG	L=2.4	AR 0810-			○																											

# SEC. 186 FUEL INJECTION PUMP

APPLIED MODEL																			
1	0	1	0	0	0	0	0	0	0	1	1	1	1	1	1	1	1	1	2
0	0	0	0	0	0	0	0	0	0	0	0	0	0	0	0	0	0	0	0
F	F	F	F	F	F	F	F	F	F	F	F	F	F	F	F	F	F	F	F
4	4	4	4	4	4	4	4	4	4	4	4	4	4	4	4	4	4	4	4
6	6	6	6	6	6	6	6	6	6	6	6	6	6	6	6	6	6	6	6
C	C	C	C	C	C	C	C	C	C	C	C	C	C	C	C	C	C	C	C
S	KEY NO.	LEV	PART NO.	PART NAME	SPECIFICATION	QTY	APPLIED DATE	ICANF	FORMER PART NO.	0	0	0	0	0	0	0	0	0	0
	91	002	219207-40K01	PLUG	L=2.6	AR	0810-			0	0	0	0	0	0	0	0	0	0
		003	2-40K02		L=2.8	AR	0810-			0	0	0	0	0	0	0	0	0	0
		004	2-40K03		L=3.0	AR	0810-			0	0	0	0	0	0	0	0	0	0
		005	2-1H600		L=3.2	AR	0810-			0	0	0	0	0	0	0	0	0	0
		006	2-87G00		L=3.4	AR	0810-			0	0	0	0	0	0	0	0	0	0
		007	2-87G01		L=3.6	AR	0810-			0	0	0	0	0	0	0	0	0	0
		008	2-87G02		L=3.8	AR	0810-			0	0	0	0	0	0	0	0	0	0
		009	2-V0700		L=7.8	AR	0810-			0	0	0	0	0	0	0	0	0	0
		010	2-V0701		L=8.0	AR	0810-			0	0	0	0	0	0	0	0	0	0
		011	2-V0702		L=8.2	AR	0810-			0	0	0	0	0	0	0	0	0	0
		012	2-V0703		L=8.4	AR	0810-			0	0	0	0	0	0	0	0	0	0
		013	2-V0704		L=8.6	AR	0810-			0	0	0	0	0	0	0	0	0	0
		014	2-V0705		L=8.8	AR	0810-			0	0	0	0	0	0	0	0	0	0
		015	2-V0706		L=9.0	AR	0810-			0	0	0	0	0	0	0	0	0	0
		016	2-V0707		L=9.2	AR	0810-			0	0	0	0	0	0	0	0	0	0
		017	2-W1700		L=9.4	AR	0810-			0	0	0	0	0	0	0	0	0	0
	92	001	219264-40K01	SPRING		AR	0810-			0	0	0	0	0	0	0	0	0	0
	93	001	219277-40K00	SHAFT-SPRING		01	0810-			0	0	0	0	0	0	0	0	0	0
	94	001	219247-V0700	SCREW		04	0810-			0	0	0	0	0	0	0	0	0	0
	95	001	216785-V0700	PLUG		01	0810-			0	0	0	0	0	0	0	0	0	0
	96	001	219253-V0700	GASKET		01	0810-			0	0	0	0	0	0	0	0	0	0
	97	001	216788-V0700	BOLT		01	0810-			0	0	0	0	0	0	0	0	0	0
	98	001	216784-V0700	SEAL-O RING		01	0810-			0	0	0	0	0	0	0	0	0	0
	99	001	216865-V0700	SEAL-O RING		01	0810-			0	0	0	0	0	0	0	0	0	0
	100	001	216865-V0701	SEAL-O RING		01	0810-			0	0	0	0	0	0	0	0	0	0
	101	001	216860-43G01	VALVE ASSY-REGULATING		01	0810-			0	0	0	0	0	0	0	0	0	0
	102	001	216866-V0700	SPRING-RING		01	0810-			0	0	0	0	0	0	0	0	0	0
	103	001	216756-R8100	VALVE-OVERFLOW		01	0810-			0	0	0	0	0	0	0	0	0	0
	104	001	216752-V0700	SPRING		01	0810-			0	0	0	0	0	0	0	0	0	0
	105	001	216711-45K00	BRACKET		01	0810-			0	0	0	0	0	0	0	0	0	0
	106	001	219244-06J00	SCREW		01	0810-			0	0	0	0	0	0	0	0	0	0
	107	001	216847-16A70	SPACER		01	0810-			0	0	0	0	0	0	0	0	0	0
	108	001	219244-06J01	SCREW		01	0810-			0	0	0	0	0	0	0	0	0	0
	109	001	219247-R8300	SCREW		01	0810-			0	0	0	0	0	0	0	0	0	0
	110	001	216870-V0701	VALVE ASSY-MAGNET, FUEL CUT		01	0810-			0	0	0	0	0	0	0	0	0	0
	111	001	216872-V0701	SEAL-O RING		01	0810-			0	0	0	0	0	0	0	0	0	0
	112	001	216876-43G00	WIRE-CONNECT, FUEL CUT		01	0810-			0	0	0	0	0	0	0	0	0	0
	113	001	219243-43G00	NUT-ADJUST		01	0810-			0	0	0	0	0	0	0	0	0	0
	114	001	214371-R8100	BOLT-EYE		01	0810-			0	0	0	0	0	0	0	0	0	0
	115	001	216799-V0700	GASKET KIT		01	0810-			0	0	0	0	0	0	0	0	0	0





# GROUP INDEX

## EXHAUST & COOLING

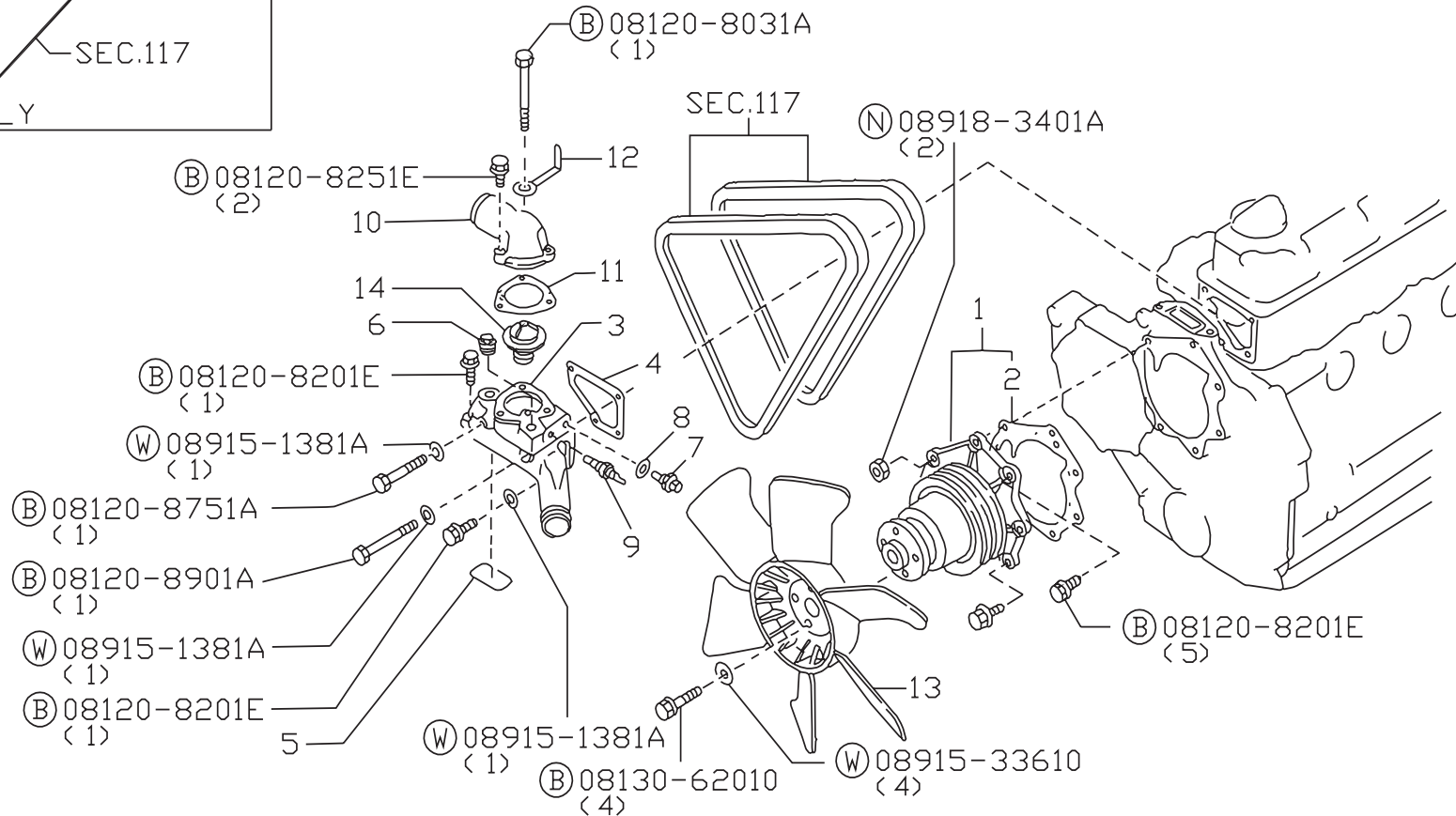
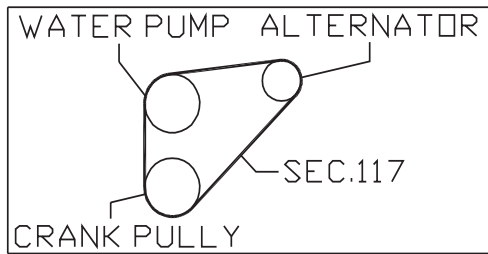
SEC. NO.	SECTION NAME	PAGE NO.
210	WATER PUMP, COOLING FAN & THERMOSTAT .....	40
213	OIL COOLER .....	42

C

# SEC. 210

## WATER PUMP, COOLING FAN & THERMOSTAT

[200810- ]



P0TD2A310210\_A

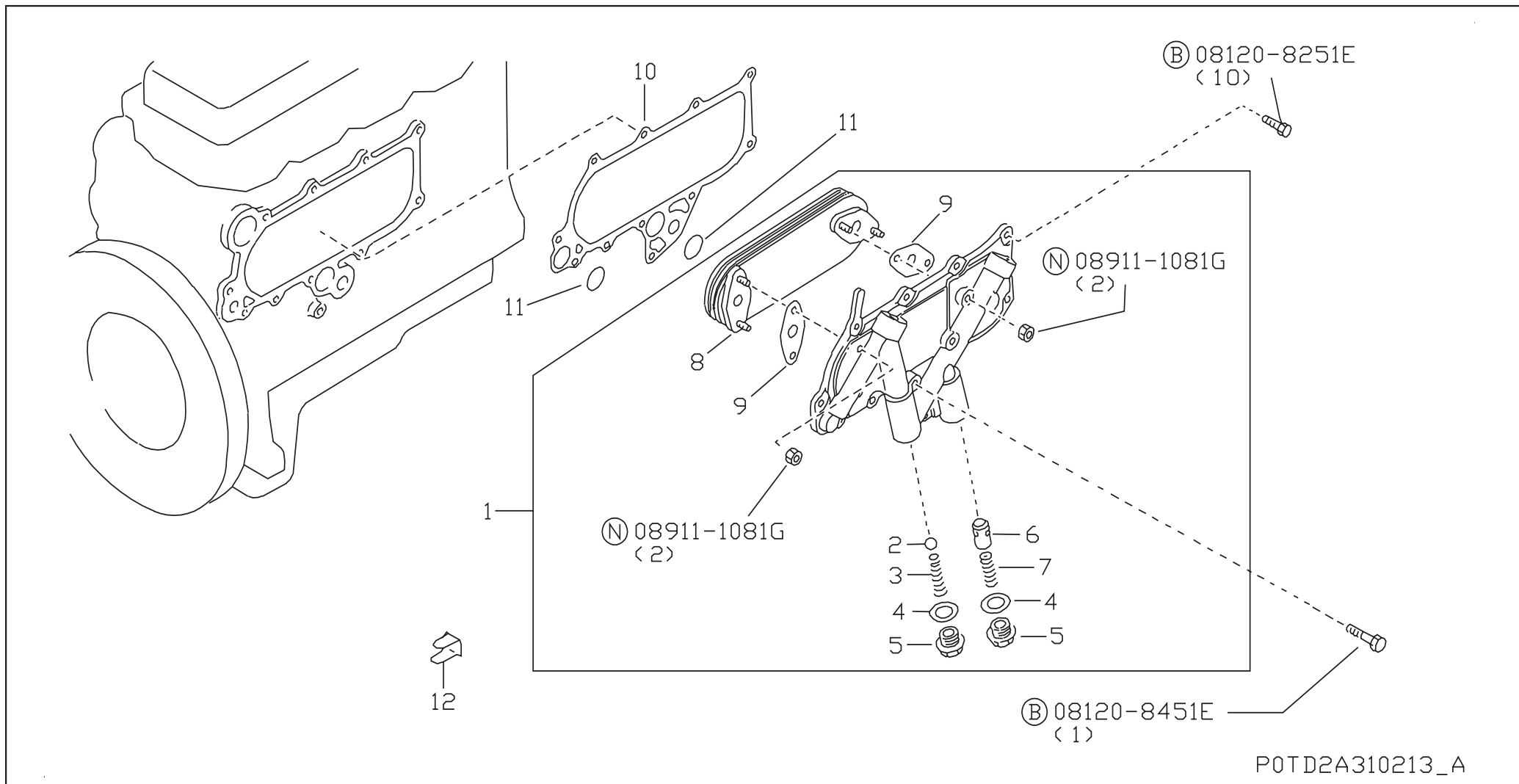
# SEC. 210 WATER PUMP, COOLING FAN & THERMOSTAT

APPLIED MODEL																											
1	0	1	0	0	0	0	0	0	0	0	1	1	1	1	1	1	1	1	2	2	2	2	2	2	2	2	3
0	0	0	0	0	0	0	0	0	0	0	1	1	1	1	1	1	1	2	2	2	2	2	2	2	2	3	
F	F	F	F	F	F	F	F	F	F	F	F	F	F	F	F	F	F	F	F	F	F	F	F	F	F	F	
4	4	4	4	4	4	4	4	4	4	4	4	4	4	4	4	4	4	4	4	4	4	4	4	4	4	4	
6	6	6	6	6	6	6	6	6	6	6	6	6	6	6	6	6	6	6	6	6	6	6	6	6	6	6	
C	C	C	C	C	C	C	C	C	C	C	C	C	C	C	C	C	C	C	C	C	C	C	C	C	C	C	

S	KEY NO.	LEV	PART NO.	PART NAME	SPECIFICATION	QTY	APPLIED DATE	ICANF	FORMER PART NO.
	1 001 1		21010-40K05	PUMP ASSY-WATER		01	0810-		
	2 001 1		21014-34N01	GASKET-WATER PUMP		01	0810-		
	3 001 1		11061-43G02	HOUSING-THERMOSTAT		01	0810-		
	4 001 1		11072-34N02	GASKET-THERMOSTAT HOUSING		01	0810-		
	5 001 1		14465-43G02	SEAL-RUBBER		01	0810-		
	6 001 1		11021-J200A	PLUG		02	0810-		
	7 001 1		22630-10G00	SENSOR-WATER TEMPERATURE		01	0810-		
	8 001 1		16794-10G00	GASKET-CONNECTOR		01	0810-		
	9 001 1		25080-89903	SENSOR-WATER TEMPERATURE		01	0810-		
	10 001 1		11060-43G00	OUTLET-WATER		01	0810-		
	11 001 1		11062-34N01	GASKET-WATER OUTLET		01	0810-		
	12 001 1		24211-89944	CLAMP		01	0810-		
	13 001 1		21060-90073	FAN-COOLING		01	0810-		
	14 001 1		21200-05D02	THERMOSTAT ASSY	82C W/J/VALVE	01	0810-		

# SEC. 213 OIL COOLER

[200810- ]







# GROUP INDEX

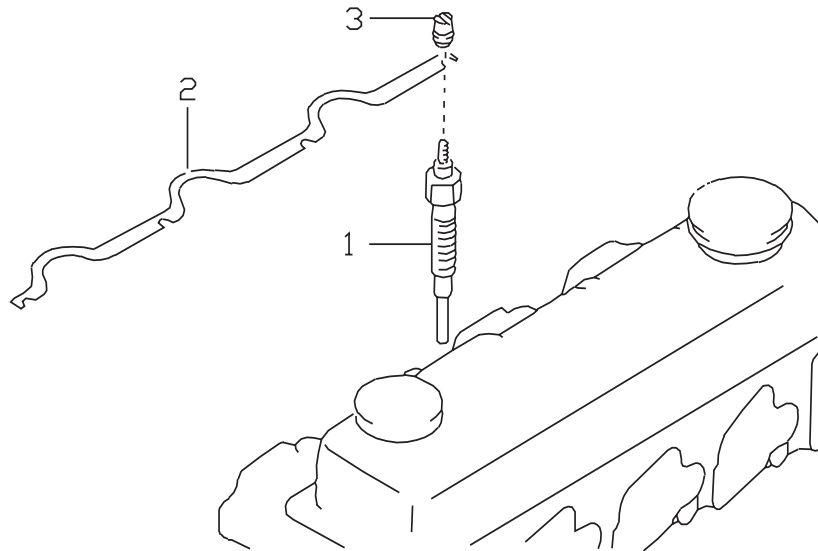
## ENGINE ELECTRICAL

SEC. NO.	SECTION NAME	PAGE NO.
220	IGNITION SYSTEM .....	46
230	ALTERNATOR FITTING .....	48
231	ALTERNATOR .....	50
232	VACUUM PUMP .....	52
233	STARTER MOTOR .....	54

D

**SEC. 220**  
**IGNITION SYSTEM**

[200810-     ]

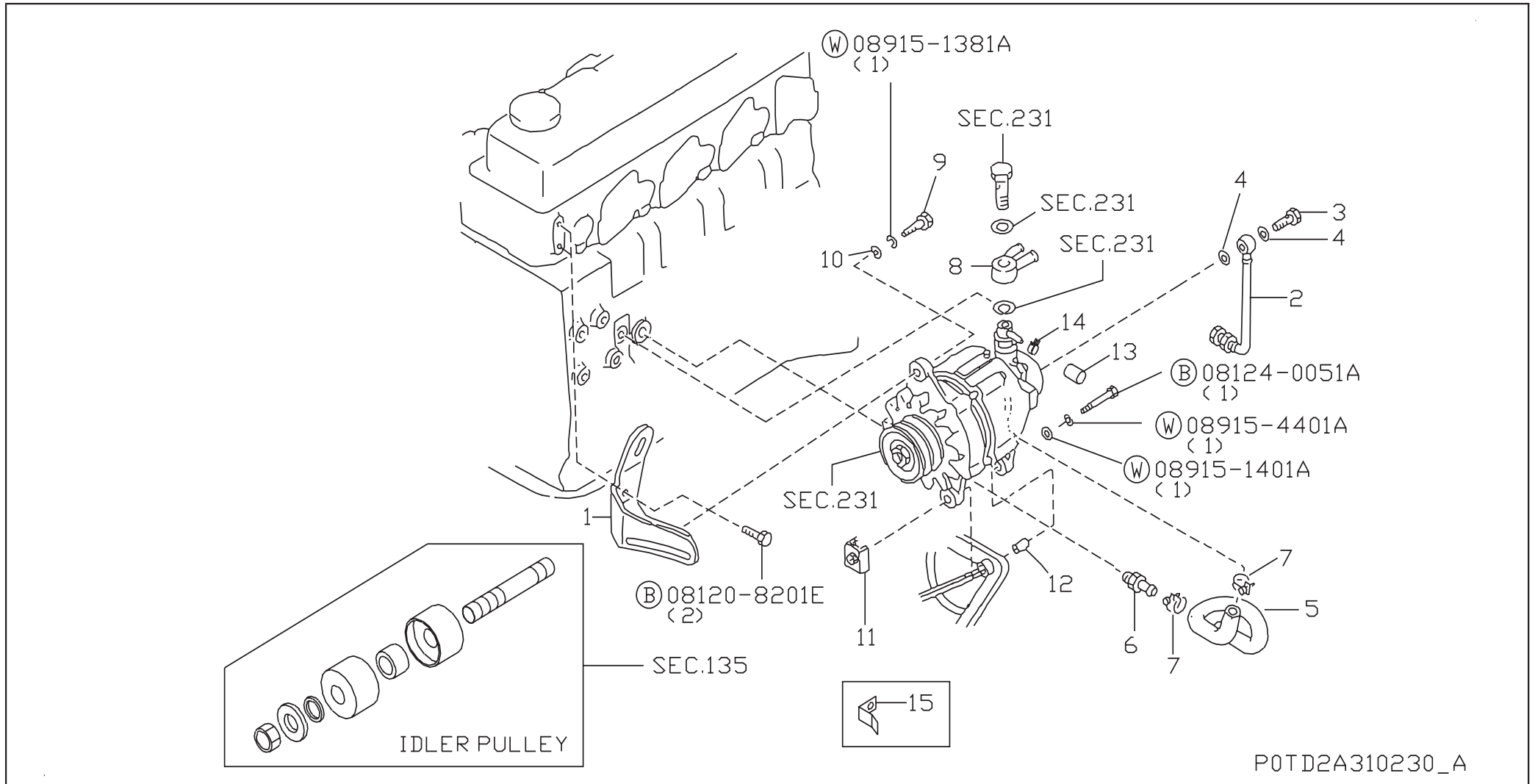


P0TD2A310220\_A



# SEC. 230 ALTERNATOR FITTING

[200810- ]

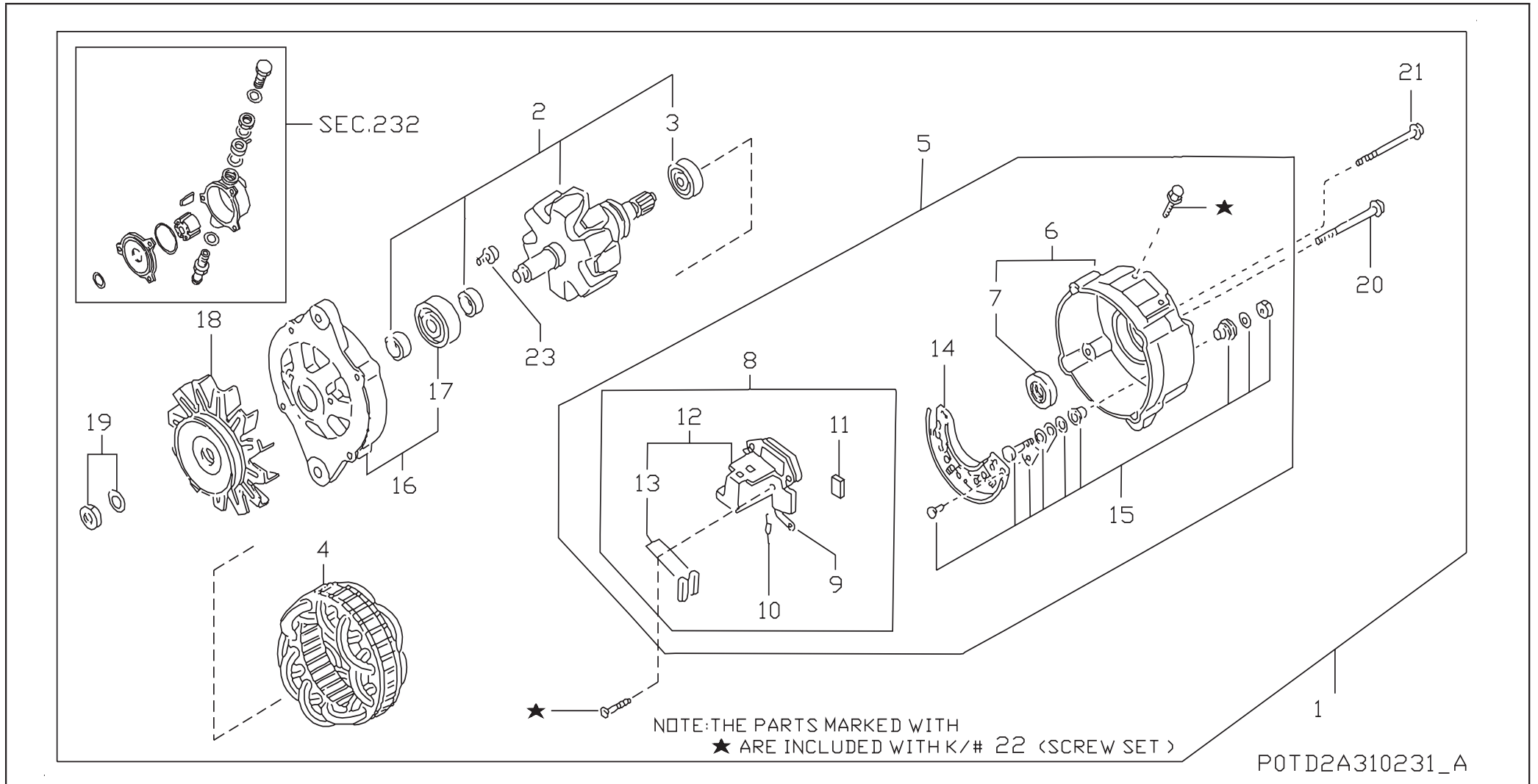


P0TD2A310230\_A



# SEC. 231 ALTERNATOR

[200810- ]



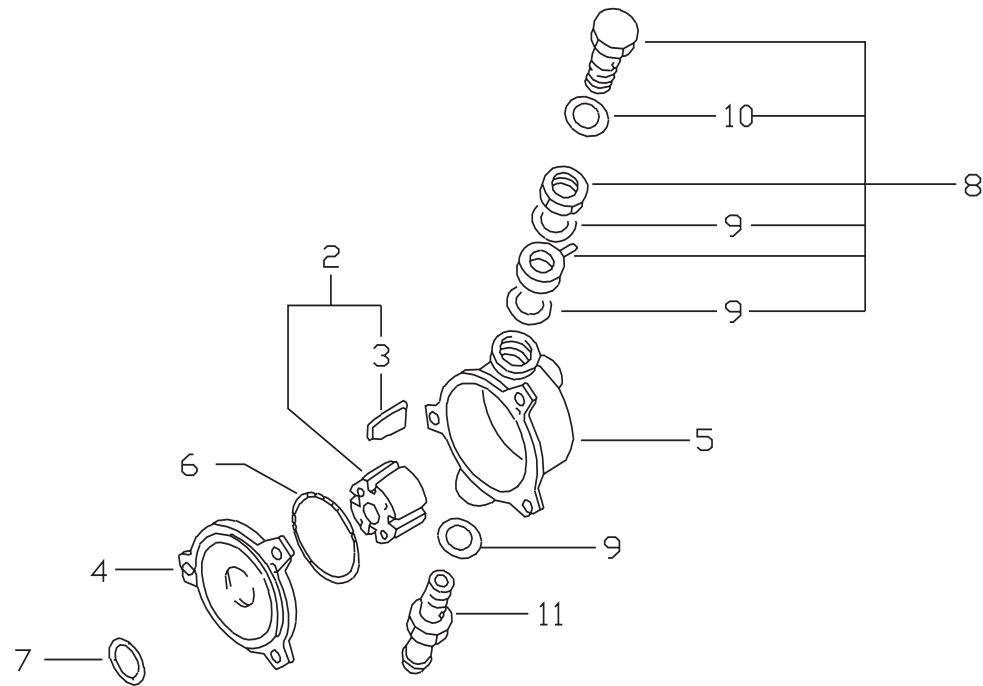
# SEC. 231 ALTERNATOR

APPLIED MODEL																														
1	0	1	0	0	0	0	0	0	0	0	1	1	1	1	1	1	1	1	2	2	2	2	2	2	2	2	3			
S	KEY NO.	LEV	PART NO.	PART NAME	SPECIFICATION	QTY	APPLIED DATE	ICAF	FORMER PART NO.	0	1	2	3	4	5	6	7	8	9	0	1	2	3	4	5	6	7	8	9	0
	1	001	1	23100-02N2A	ALTERNATOR ASSY	12V-50A	01	0810-		○																				
	2	001	2	23108-02N2A	ROTOR ASSY		01	0810-		○																				
	3	001	3	23129-05E06	BEARING-BALL		01	0810-		○																				
	4	001	2	23102-R8101	STATOR ASSY		01	0810-		○																				
	5	001	2	23127-43G08	BRACKET ASSY-REAR		01	0810-		○																				
	6	001	3	23183-43G1A	COVER-REAR		01	0810-		○																				
	7	001	4	14658-44G00	SEAL-OIL		01	0810-		○																				
	8	001	3	23528-18G0A	REGULATOR ASSY-IC		01	0810-		○																				
	9	001	4	23137-V7201	BLOCK-TERMINAL		01	0810-		○																				
	10	001	4	23245-P3005	DIODE ASSY		01	0810-		○																				
	11	001	4	23215-54A00	REGULATOR ASSY-IC		01	0810-		○																				
	12	001	4	23135-V6600	HOLDER ASSY-BRUSH		01	0810-		○																				
	13	001	5	23142-V6600	BRUSH SET		02	0810-		○																				
	14	001	3	23230-02NOA	DIODE ASSY		01	0810-		○																				
	15	001	3	23156-02NOA	NUT-SET		01	0810-		○																				
	16	001	2	23118-43G0A	BRACKET ASSY-FRONT		01	0810-		○																				
	17	001	3	23120-58S00	BEARING-BALL		01	0810-		○																				
	18	001	2	23150-43G0A	PULLEY ASSY		01	0810-		○																				
	19	001	2	23153-43G0A	NUT-PULLEY		01	0810-		○																				
	20	001	2	23131-W170A	BOLT-THROUGH		02	0810-		○																				
	21	001	2	23131-16A0A	BOLT-THROUGH		02	0810-		○																				
	22	001	2	23200-05E0A	SCREW-SET		01	0810-		○																				

**SEC. 232**  
**VACUUM PUMP**

[200810-     ]

NOTE; KEY NO.1 PUMP ASSY-VACUUM  
INCLUDES KEY NO.2-11

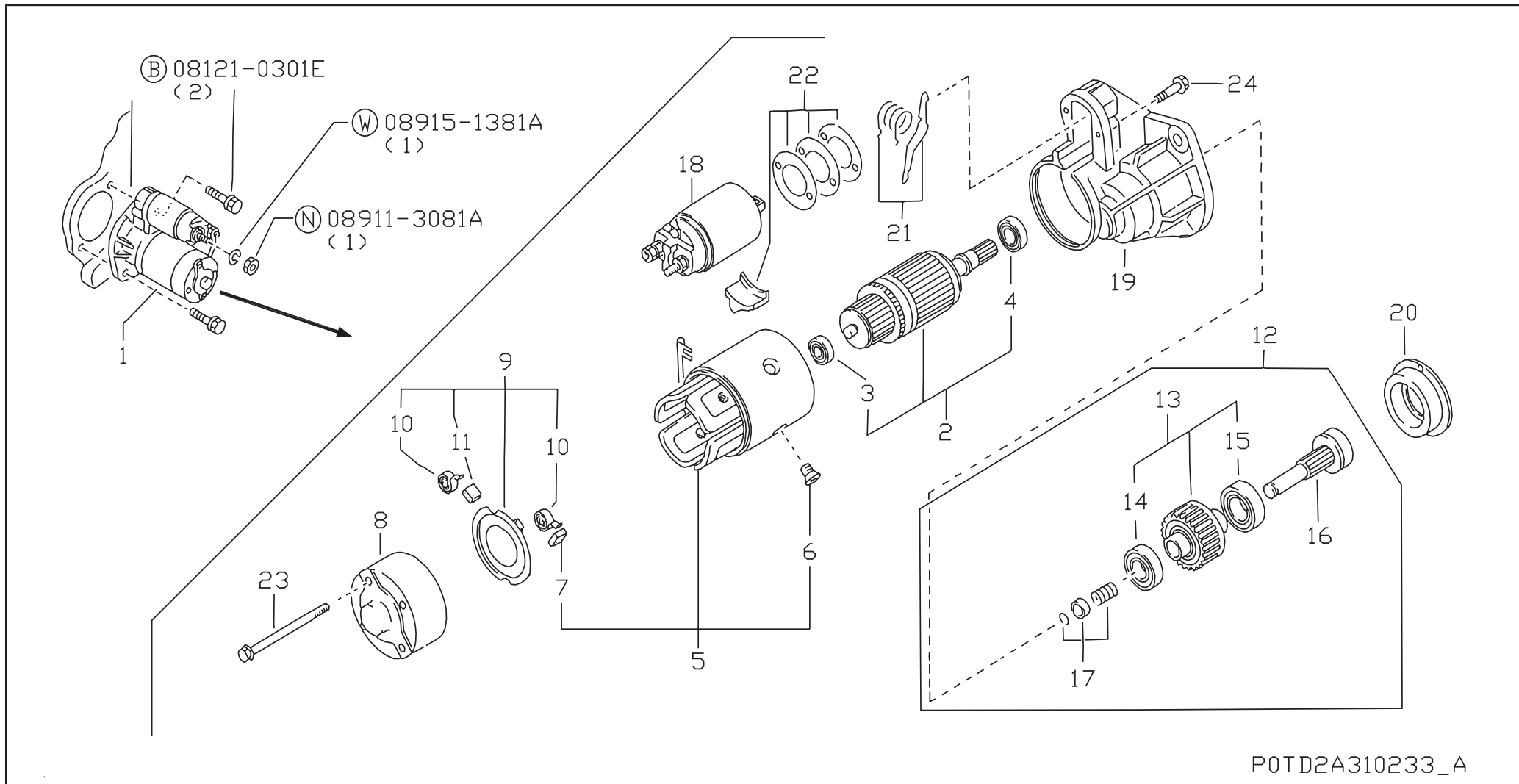


P0TD2A310232\_A



# SEC. 233 STARTER MOTOR

[200810- ]



P0TD2A310233\_A

# SEC. 233 STARTER MOTOR

APPLIED MODEL																											
1	0	1	0	0	0	0	0	0	0	0	1	1	1	1	1	1	1	1	2	2	2	2	2	2	2	2	3
0	0	0	0	0	0	0	0	0	0	0	0	0	0	0	0	0	0	0	0	0	0	0	0	0	0	0	0
F	F	F	F	F	F	F	F	F	F	F	F	F	F	F	F	F	F	F	F	F	F	F	F	F	F	F	F
4	4	4	4	4	4	4	4	4	4	4	4	4	4	4	4	4	4	4	4	4	4	4	4	4	4	4	4
6	6	6	6	6	6	6	6	6	6	6	6	6	6	6	6	6	6	6	6	6	6	6	6	6	6	6	6
C	C	C	C	C	C	C	C	C	C	C	C	C	C	C	C	C	C	C	C	C	C	C	C	C	C	C	C

S	KEY NO.	LEV	PART NO.	PART NAME	SPECIFICATION	QTY	APPLIED DATE	ICAF	FORMER PART NO.
	1 001 1		23300-6K200	MOTOR ASSY-STARTER	12V-2.5KW	01	0810-		
	2 001 2		23310-0Y000	ARMATURE ASSY-STARTER		01	0810-		
	3 001 3		23319-M4900	BEARING		01	0810-		
	4 001 3		23338-M4900	BEARING-REAR COVER		01	0810-		
	5 001 2		23306-6T000	COIL ASSY-FIELD		01	0810-		
	6 001 3		23305-09500	SCREW-POLECORE SET		04	0810-		
	7 001 3		23379-57J05	BRUSH-PLUS		02	0810-		
	8 001 2		23337-0Y000	COVER ASSY-REAR		01	0810-		
	9 001 2		23378-57J05	HOLDER ASSY-BRUSH		01	0810-		
	10 001 3		23333-W2500	SPRING-BRUSH		04	0810-		
	11 001 3		23379-57J05	BRUSH-MINUS		02	0810-		
	12 001 2		23312-6T000	PINION ASSY-ARMATURE		01	0810-		
	13 001 3		23354-6T000	CLUTCH ASSY		01	0810-		
	14 001 4		23358-07G00	BEARING		01	0810-		
	15 001 4		23363-07G00	BEARING		01	0810-		
	16 001 3		23357-6T000	SHAFT ASSY-PINION		01	0810-		
	17 001 3		23465-M4900	STOPPER SET-PINION		01	0810-		
	18 001 2		23343-6T000	SWITCH ASSY-MAGNETIC		01	0810-		
	19 001 2		23318-6T000	CASE ASSY-GEAR		01	0810-		
	20 001 2		23341-10G00	RETAINER-BEARING		01	0810-		
	21 001 2		23322-6T000	LEVER SET-SHIFT		01	0810-		
	22 001 2		23470-6T000	COVER SET-DUST		01	0810-		
	23 001 2		23340-0Y000	BOLT-THROUGH		02	0810-		
	24 001 2		23344-57J05	BOLT		02	0810-		



## **ALPHABETICAL PART NAME INDEX**

# ALPHABETICAL PART NAME INDEX

PART NAME	SEC.NO.	PAGE	PART NAME	SEC.NO.	PAGE	PART NAME	SEC.NO.	PAGE
<b><u>A</u></b>			<b><u>C</u></b>			<b><u>E</u></b>		
ANGLE-GOVERNOR LEVER .....	186	35	COVER ASSY-VALVE ROCKER .....	111	11	ENGINE ASSY-BARE .....	101	5
ARMATURE ASSY-STARTER .....	233	55	CAM-DISC .....	186	33	ENGINE ASSY-SHORT .....	101	5
<b><u>B</u></b>			<b><u>D</u></b>			<b><u>F</u></b>		
BAR-ADJUSTING,ALTERNATOR .....	230	49	CAMSHAFT ASSY .....	130	19	FAN-COOLING .....	210	41
BEARING .....	233	55	CAP ASSY-OIL FILLER .....	111	11	FILTER ASSY-FUEL .....	164	29
BEARING SET-CRANKSHAFT .....	120	17	CAP-CONNECTOR .....	230	49	FILTER ASSY-OIL .....	150	25
BEARING-BALL .....	135	21	CAP-GOVERNOR .....	186	35	<b><u>G</u></b>		
	231	51	CAP-VALVE .....	150	25	GASKET .....	118	15
BEARING-CONNECTING ROD .....	120	17	CARTRIDGE ASSY .....	164	29		185	31
BEARING-IDELER SHAFT .....	135	21	CASE ASSY-GEAR .....	233	55		186	35
BEARING-OUTPUT SHAFT .....	135	21	CHAMBER ASSY-COMBUSTION .....	111	11		213	43
BEARING-REAR COVER .....	233	55	CLAMP .....	210	41		230	49
BELT-FAN .....	117	13	CLAMP-HOSE .....	118	15	GASKET KIT .....	186	36
BLOCK ASSY-CYLINDER .....	110	9	CLAMP-TUBE .....	185	31	GASKET KIT-ENGINE REPAIR .....	102	7
BLOCK-TERMINAL .....	231	51	CLIP .....	164	29	GASKET KIT-VALVE REGRIND .....	102	7
BODY ASSY-FILTER .....	164	29		185	31	GASKET-CONNECTOR .....	164	29
BOLT .....	111	11		186	33		210	41
	135	21	CLIP-HARNES .....	111	11	GASKET-COVER .....	135	21
	186	33		230	49	GASKET-CYLINDER HEAD .....	111	11
	186	36	CLUTCH ASSY .....	233	55	GASKET-DELIVERY VALVE .....	186	34
	230	49	COIL ASSY-FIELD .....	233	55	GASKET-EXH MANF .....	140	23
	233	55	COLLAR .....	186	33	GASKET-FR COVER .....	135	21
BOLT-CONNECTING ROD .....	120	17	COLLET-VALVE .....	130	19	GASKET-FR COVER .....	135	21
BOLT-CYLINDER HEAD .....	111	11	CONNECTOR .....	135	21	GASKET-INJECTION PUMP .....	186	33
BOLT-EYE .....	186	36		230	49	GASKET-LIQUID .....	110	9
	230	49	COVER .....	186	33	GASKET-LIQUID .....	110	9
BOLT-FLYWHEEL .....	120	17	COVER ASSY-FRONT .....	135	21	GASKET-MANIFOLD .....	140	23
BOLT-MAIN BEARING CAP .....	110	9	COVER ASSY-GOVERNOR .....	186	34	GASKET-OIL COOLER .....	213	43
BOLT-OIL JET .....	110	9	COVER ASSY-REAR .....	233	55	GASKET-OIL PAN .....	110	9
BOLT-THROUGH .....	231	51	COVER SET-DUST .....	233	55	GASKET-OIL PUMP .....	150	25
	233	55	COVER REAR .....	231	51	GASKET-OIL PUMP .....	150	25
BRACKET .....	186	36	CRANKSHAFT ASSY .....	120	17	GASKET-OIL STRAINER .....	150	25
BRACKET ASSY-FRONT .....	231	51	<b><u>D</u></b>			GASKET-ROCKER COVER .....	111	11
BRACKET ASSY-REAR .....	231	51	DAMPER-RUBBER .....	186	33	GASKET-THERMOSTAT HOUSING .....	210	41
BRACKET-HID OIL PUMP .....	135	21	DIODE ASSY .....	231	51	GASKET-WATER OUTLET .....	210	41
BRACKET-INJECTION PUMP .....	186	33	DOWEL .....	110	9	GASKET-WATER PUMP .....	210	41
BRACKET-OIL FILTER .....	150	25	DOWEL-PIN .....	110	9	GASSSET-CYLINDER BLOCK .....	135	21
BRACKET-ROCKER SHAFT .....	130	19		135	21	GAUGE ASSY-OIL LEVEL .....	110	9
BRUSH SET .....	231	51				GEAR ASSY-IDLER .....	130	19
BRUSH-MINUS .....	233	55				GEAR-DRIVE,INJECTION PUMP .....	186	33
BRUSH-PLUS .....	233	55				GEAR-IDLER .....	135	21
BUSH .....	135	21				GEAR-INJECTION .....	186	33
BUSH SET .....	110	9				GEAR-OUTPUT .....	135	21
BUSHING .....	120	17				GUIDE-INLET VALVE .....	111	11
BUSH-OIL PUMP DRIVE SPINDLE .....	110	9				GUIDE-OIL LEVEL GAUGE .....	110	9
						GUIDE-ROLLER .....	186	34

# ALPHABETICAL PART NAME INDEX

PART NAME	SEC.NO.	PAGE	PART NAME	SEC.NO.	PAGE	PART NAME	SEC.NO.	PAGE
<b><u>H</u></b>			NUT .....	185	31	PUMP ASSY-WATER .....	210	41
HEAD ASSY-CYLINDER .....	111	11		186	33	PUSH ROD .....	185	31
HEAD-DISTRIBUTOR .....	186	34		186	35	<b><u>R</u></b>		
HOLDER ASSY .....	185	31	NUT-ADJUST .....	186	35	REGULATOR ASSY-IC .....	231	51
HOLDER ASSY-BRUSH .....	231	51	NUT-ADJUST SCREW .....	130	19	RETAINER-BEARING .....	233	55
	233	55	NUT-CONNECTING ROD .....	120	17	RETAINER-VALVE SPRING .....	130	19
HOLDER-DELIERY VALVE .....	186	34	NUT-PULLEY .....	231	51	ROCKER ASSY-VALVE .....	130	19
HOLDER-FLY WEIGHT .....	186	35	NUT-PULLEY, CRANKSHAFT .....	120	17	ROD COMPL-CONNECTING .....	120	17
HOSE-BLOWBY .....	118	15	NUT-SET .....	231	51	ROD-PUSH .....	130	19
HOSE-FUEL .....	185	31	<b><u>O</u></b>			ROLLER ASSY .....	186	33
HOSE-OIL RETURN .....	230	49	O RING .....	110	9	ROTOR .....	232	53
HOUSING ASSY .....	232	53	OUTLET-WATER .....	210	41	ROTOR ASSY .....	231	51
HOUSING ASSY-FLYWHEEL .....	135	21	<b><u>P</u></b>					
HOUSING-INJECTION PUMP .....	186	33	PACKING .....	232	53	<b><u>S</u></b>		
HOUSING-THERMOSTAT .....	210	41	PACKING-OIL FILLER CAP .....	111	11	SCREW .....	186	33
HOUSING-TIMING CHAIN .....	135	21	PAN ASSY-OIL .....	110	9		186	34
<b><u>J</u></b>			PIECE-DISTANCE .....	185	31	SCREW-ADJUST, VALVE ROCKER .....	130	19
JET ASSY-OIL .....	110	9	PILOT-CONVERTER .....	120	17	SCREW-SET .....	231	51
JET-OIL, TIMING CHAIN .....	110	9	PIN .....	186	33	SEAL-O RING .....	135	21
<b><u>K</u></b>			PINION ASSY-ARMATURE .....	233	55		150	25
KEY .....	120	17	PIN-SPRING .....	110	9		164	29
KEY-WOODRUFF .....	186	33		120	17		186	33
<b><u>L</u></b>			PIN-STRAIGHT .....	110	9		186	34
LEVER .....	186	33	PISTON .....	186	33		186	35
LEVER SET-SHIFT .....	233	55	PISTON, W/PIN .....	120	17		186	36
LEVER-CONTROL .....	186	34	PLATE .....	186	37		213	43
LEVER-GOVERNOR .....	186	35	PLATE ASSY-DRIVE .....	120	17	SEAL-OIL .....	232	53
LEVER-STOP .....	186	35	PLATE-CENTER VACUUM PUMP .....	232	53		135	21
LIFTER-VALVE .....	130	19	PLATE-CONNECTOR .....	220	47		186	33
LINER-CYLINDER .....	110	9	PLATE-ENGINE .....	135	21		231	51
<b><u>M</u></b>			PLATE-IDLER GEAR .....	130	19	SEAL-OIL VALVE STEM .....	130	19
MANIFOLD-EXHAUST .....	140	23	PLATE-LOCATING, CAMSHAFT .....	130	19	SEAL-OIL, CRANKSHAFT REAR .....	110	9
MANIFOLD-INTAKE .....	140	23	PLUG .....	110	9	SEAL-RUBBER .....	135	21
MOTOR ASSY-STARTER .....	233	55		186	35		185	31
<b><u>N</u></b>				210	41	SEAT-DRAIN PLUG .....	110	9
NOZZLE & HOLDER ASSY .....	185	31	PLUG-DRAIN .....	110	9	SEAT-SPRING .....	186	34
NOZZLE ASSY .....	185	31	PLUG-GLOW .....	220	47	SEAT-SPRING, PLUNGER .....	186	34
NUT .....	135	21	PLUG-WELCH .....	110	9	SEAT-VALVE, EXHAUST .....	111	11
				111	11	SEAT-VALVE, INTAKE .....	111	11
			PULLEY ASSY .....	231	51	SENSOR ASSY .....	164	29
			PULLEY-CRANKSHAFT .....	120	17	SENSOR-WATER TEMPERATURE .....	210	41
			PUMP ASSY-FEED .....	186	33	SHAFT ASSY-CONTROL .....	186	34
			PUMP ASSY-INJECTION .....	186	33	SHAFT ASSY-PINION .....	233	55
			PUMP ASSY-OIL .....	150	25	SHAFT ASSY-VALVE ROCKER .....	130	19
			PUMP ASSY-VACUUM .....	232	53			

# ALPHABETICAL PART NAME INDEX

PART NAME	SEC.NO.	PAGE	PART NAME	SEC.NO.	PAGE	PART NAME	SEC.NO.	PAGE
SHAFT-DRIVE .....	186	33	TUBE ASSY-INJECTION,N02 .....	185	31			
SHAFT-GOVERNOR .....	186	35	TUBE ASSY-INJECTION,N03 .....	185	31			
SHAFT-GOVERNORCOVER .....	186	35	TUBE ASSY-INJECTION,N04 .....	185	31			
SHAFT-IDLER .....	135	21	TUBE ASSY-OIL .....	135	21			
SHAFT-IDLER SPROCKET .....	130	19		230	49			
SHAFT-STOP LEVER .....	186	34	TUBE-FUEL .....	185	31			
SHIM .....	186	33	TUBE-SPILL .....	185	31			
	186	34	TUBE-VINYL .....	164	29			
	186	35						
SLEEVE-GOVERNOR .....	186	35	<b><u>V</u></b>					
SLIDER .....	186	33	VALVE ASSY-CONTROL BLOWBY .....	118	15			
SLINGER-ENGINE, REAR .....	111	11	VALVE ASSY-OIL REGULATOR .....	150	25			
SPACER .....	135	21	VALVE ASSY-REGULATING .....	186	36			
	186	36	VALVE ASSY-SET .....	232	53			
SPACER-ALTERNATOR .....	230	49	VALVE-DELIVERY .....	186	34			
SPACER-CRANKSHAFT,END .....	120	17	VALVE-EXHAUST .....	130	19			
SPRING .....	185	31	VALVE-INTAKE .....	130	19			
	186	35	VALVE-OVERFLOW .....	186	36			
	186	36	VALVE-RELIEF .....	213	43			
SPRING-BRUSH .....	233	55	VALVE-RERIEF .....	213	43			
SPRING-DELIVERY VALVE .....	186	34	VANE .....	232	53			
SPRING-PLUNGER .....	186	34						
SPRING-RELIEF VALVE .....	213	43	<b><u>W</u></b>					
SPRING-RETURN .....	186	35	WASHER .....	111	11			
SPRING-ROCKER .....	130	19		135	21			
SPRING-SEAT .....	186	35		140	23			
SPRING-TIMER .....	186	33		150	25			
SPRING-VALVE .....	130	19		185	31			
	150	25		186	33			
	213	43		186	34			
SPRING-VALVE ROCKER .....	130	19		186	35			
SPROCKET-CAMSHAFT .....	130	19		230	49			
SPROCKET-CRANKSHAFT .....	120	17		120	17			
	135	21		130	19			
STATOR ASSY .....	231	51	WASHER SET-THRUST .....	186	34			
STAY-TUBE .....	185	31	WASHER-CAM SPROCKET .....	186	35			
STOPPER SET-PINION .....	233	55	WASHER-SPRING .....	186	34			
STOPPER-ALTERNATOR NUT .....	230	49	WEIGHT KIT-FLY .....	186	35			
STRAINER-OIL .....	150	25	WIRE-CONNECT,FUEL CUT .....	186	36			
STUD .....	135	21						
	140	23						
STUD-OIL FILTER .....	110	9						
SWITCH ASSY-MAGNETIC .....	233	55						
SWITCH ASSY-OIL PRESSURE .....	150	25						
<b><u>T</u></b>								
THERMOSTAT ASSY .....	210	41						
TUBE ASSY-FUEL FEED PUMP TO FUEL FILTER ..	164	29						
TUBE ASSY-INJECTION,N01 .....	185	31						

## PART NO. INDEX

# PART NUMBER INDEX

PART NO.	SEC.NO.	PAGE NO.	PART NO.	SEC.NO.	PAGE NO.	PART NO.	SEC.NO.	PAGE NO.	PART NO.	SEC.NO.	PAGE NO.	PART NO.	SEC.NO.	PAGE NO.	PART NO.	SEC.NO.	PAGE NO.
<b>00000</b>			11060-43G00 .. 210 .....	41	12280-37505 .. 120 .....	17	13256-43G02 .. 130 .....	19	15238-2S60B .. 150 .....	25	16696-43G0B .. 185 .....	31					
			11061-43G02 .. 210 .....	41	12280-37528 .. 120 .....	17	13257-63G01 .. 130 .....	19	15243-31N00 .. 213 .....	43	16697-21N0A .. 185 .....	31					
			11062-34N01 .. 210 .....	41	12280-37529 .. 120 .....	17	13258-63G01 .. 130 .....	19	15255-D5502 .. 111 .....	11	16698-43G0B .. 185 .....	31					
01001-20024 .. 135 .....	21	11065-63G00 .. 220 .....	47	12293-0W801 .. 110 .....	9	13265-02N02 .. 111 .....	11	15270-D0103 .. 111 .....	11	16699-43G0A .. 185 .....	31						
01011-00074 .. 135 .....	21	11072-34N02 .. 210 .....	41	12298-34N00 .. 110 .....	9	13268-29N0A .. 111 .....	11	15280-90001 .. 213 .....	43	16700-40K10 .. 186 .....	33						
01125-00104 .. 135 .....	21	11076-40K01 .. 111 .....	11	12304-41K01 .. 120 .....	17	13268-D010C .. 111 .....	11	15300-76200 .. 213 .....	43	16701-R8100 .. 186 .....	33						
01151-01004 .. 140 .....	23	11086-43G01 .. 220 .....	47	12309-61503 .. 120 .....	17	13270-43G03 .. 111 .....	11	15304-61501 .. 213 .....	43	16702-54T00 .. 186 .....	35						
01211-01054 .. 186 .....	33	11098-45N00 .. 111 .....	11	12313-10600 .. 110 .....	9	13297-43G00 .. 130 .....	19	16132-43G00 .. 135 .....	21	16705-40K00 .. 186 .....	34						
01221-02004 .. 220 .....	47	11099-45N00 .. 111 .....	11	12313-L1122 .. 135 .....	21	13510-40K01 .. 135 .....	21	16207-54T00 .. 230 .....	49	16705-40K01 .. 186 .....	34						
01225-00112 .. 130 .....	19	11099-45N10 .. 111 .....	11	12315-2W200 .. 120 .....	17	13560-54T00 .. 135 .....	21	16400-41K00 .. 164 .....	29	16706-V2100 .. 186 .....	35						
01351-00104 .. 230 .....	49	11099-45N11 .. 111 .....	11	12320-37502 .. 120 .....	17	14003-41K01 .. 140 .....	23	16401-41K00 .. 164 .....	29	16707-V2100 .. 186 .....	35						
01522-05104 .. 110 .....	9	11110-02N09 .. 110 .....	9	12320-40K01 .. 135 .....	21	14004-41K00 .. 140 .....	23	16405-T9005 .. 164 .....	29	16709-40K03 .. 186 .....	37						
01522-10224 .. 120 .....	17	11121-63G03 .. 110 .....	9	12330-40K00 .. 120 .....	17	14035-31N00 .. 140 .....	23	16406-T9001 .. 164 .....	29	16711-40K01 .. 186 .....	37						
01558-00094 .. 230 .....	49	11128-51N00 .. 110 .....	9	12331-40K0A .. 120 .....	17	14036-43G00 .. 140 .....	23	16407-T9001 .. 164 .....	29	16711-45K00 .. 186 .....	36						
01558-00124 .. 118 .....	15	11140-02N01 .. 110 .....	9	12333-02N01 .. 120 .....	17	14038-96000 .. 140 .....	23	16412-10H00 .. 164 .....	29	16720-43G00 .. 186 .....	33						
01558-00401 .. 185 .....	31	11150-54T00 .. 110 .....	9	13001-54T03 .. 130 .....	19	14065-41K00 .. 135 .....	21	16413-10H00 .. 164 .....	29	16721-5C900 .. 186 .....	33						
.. 230 .....	49	11713-40K00 .. 230 .....	49	13002-43G05 .. 110 .....	9	14371-R8100 .. 186 .....	36	16420-43G00 .. 186 .....	33	16730-16A00 .. 186 .....	33						
01612-11134 .. 135 .....	21	11715-40K00 .. 230 .....	49	13003-43G06 .. 110 .....	9	14465-43G02 .. 210 .....	41	16446-2S000 .. 185 .....	31	16731-V0700 .. 186 .....	33						
01619-00444 .. 230 .....	49	11716-6T00A .. 230 .....	49	13003-43G07 .. 110 .....	9	14465-43G20 .. 135 .....	21	16550-99005 .. 186 .....	34	16733-V0701 .. 186 .....	33						
01642-03004 .. 110 .....	9	11719-37N0A .. 230 .....	49	13003-43G08 .. 110 .....	9	14465-43G21 .. 135 .....	21	16600-43G23 .. 185 .....	31	16734-V0700 .. 186 .....	33						
01648-00024 .. 110 .....	9	11720-41K03 .. 117 .....	13	13010-06J00 .. 130 .....	19	14650-02N2A .. 232 .....	53	16610-43G01 .. 185 .....	31	16735-40K00 .. 186 .....	33						
.. 111 .....	11	11810-43G00 .. 118 .....	15	13011-43G00 .. 130 .....	19	14651-G5701 .. 232 .....	53	16612-43G00 .. 185 .....	31	16735-V0700 .. 186 .....	33						
01648-00044 .. 111 .....	11	11826-40K00 .. 118 .....	15	13012-54T00 .. 130 .....	19	14652-W2500 .. 232 .....	53	16613-43G00 .. 185 .....	31	16741-R8100 .. 186 .....	33						
01648-00084 .. 110 .....	9	11831-86P00 .. 230 .....	49	13014-41K00 .. 135 .....	21	14658-44G00 .. 231 .....	51	16613-43G01 .. 185 .....	31	16742-37501 .. 186 .....	33						
01648-00154 .. 110 .....	9	11914-41K00 .. 135 .....	21	13016-41K00 .. 135 .....	21	14660-43G08 .. 232 .....	53	16613-43G02 .. 185 .....	31	16742-R8101 .. 186 .....	34						
01648-00224 .. 110 .....	9	12010-6T005 .. 120 .....	17	13016-54T0A .. 130 .....	19	14665-43G0A .. 230 .....	49	16613-43G03 .. 185 .....	31	16742-R8106 .. 186 .....	34						
01931-00134 .. 135 .....	21	12010-6T015 .. 120 .....	17	13021-40K00 .. 135 .....	21	14670-21N00 .. 230 .....	49	16613-43G04 .. 185 .....	31	16750-37N00 .. 186 .....	33						
01931-00394 .. 135 .....	21	12030-31N00 .. 120 .....	17	13021-43G01 .. 120 .....	17	14675-V720A .. 232 .....	53	16613-43G05 .. 185 .....	31	16751-V0700 .. 186 .....	33						
05412-1800P .. 150 .....	25	12032-54T00 .. 120 .....	17	13024-0T600 .. 130 .....	19	14677-02N1A .. 232 .....	53	16613-43G06 .. 185 .....	31	16752-V0700 .. 186 .....	36						
<b>10000</b>			12033-6T011 .. 120 .....	17	13030-37500 .. 130 .....	19	14681-37600 .. 232 .....	53	16613-43G07 .. 185 .....	31	16756-R8100 .. 186 .....	36					
			12100-0W802 .. 120 .....	17	13031-41K00 .. 135 .....	21	14681-37602 .. 232 .....	53	16613-43G08 .. 185 .....	31	16760-43G00 .. 186 .....	34					
			12109-43G00 .. 120 .....	17	13034-NA02A .. 135 .....	21	14682-02N0A .. 232 .....	53	16613-43G09 .. 185 .....	31	16764-V0700 .. 186 .....	34					
10006-43G00 .. 111 .....	11	12111-2W20A .. 120 .....	17	13037-54T01 .. 135 .....	21	14682-Y750B .. 230 .....	49	16615-43G00 .. 185 .....	31	16765-V0700 .. 186 .....	34						
10101-40K2K .. 102 .....	7	12112-43G00 .. 120 .....	17	13081-40K00 .. 110 .....	9	14688-61503 .. 232 .....	53	16616-43G00 .. 185 .....	31	16766-43G00 .. 186 .....	34						
10102-41K00 .. 101 .....	5	12117-2W20A .. 120 .....	17	13201-43G01 .. 130 .....	19	14688-W2500 .. 232 .....	53	16620-43G02 .. 185 .....	31	16767-V0700 .. 186 .....	34						
10103-40K00 .. 101 .....	5	12118-2W20A .. 120 .....	17	13202-43G01 .. 130 .....	19	15010-43G06 .. 150 .....	25	16625-43G00 .. 185 .....	31	16768-V0700 .. 186 .....	34						
11009-40K02 .. 110 .....	9	12119-2W20A .. 120 .....	17	13203-90010 .. 130 .....	19	15025-43G01 .. 150 .....	25	16625-43G02 .. 111 .....	11	16770-V0700 .. 186 .....	34						
11012-2S000 .. 110 .....	9	12120-2W20A .. 120 .....	17	13207-V170A .. 130 .....	19	15050-02N01 .. 150 .....	25	16626-43G00 .. 185 .....	31	16775-V0700 .. 186 .....	34						
11013-T9000 .. 110 .....	9	12124-43G02 .. 110 .....	9	13208-Z5500 .. 130 .....	19	15053-80G00 .. 150 .....	25	16627-43G00 .. 185 .....	31	16776-R8100 .. 186 .....	34						
11019-9000A .. 110 .....	9	12125-VC700 .. 110 .....	9	13209-43G01 .. 130 .....	19	15056-02N00 .. 110 .....	9	16629-43G01 .. 185 .....	31	16777-V0701 .. 186 .....	34						
11021-J200A .. 110 .....	9	12200-6T00B .. 120 .....	17	13212-54T01 .. 111 .....	11	15075-43G00 .. 110 .....	9	16640-R8100 .. 186 .....	33	16781-V0700 .. 186 .....	34						
.. 210 .....	41	12205-76200 .. 120 .....	17	13222-43G00 .. 130 .....	19	15132-43G01 .. 150 .....	25	16645-40K00 .. 186 .....	33	16782-V0700 .. 186 .....	34						
11026-61000 .. 110 .....	9	12207-MA70A .. 120 .....	17	13223-43G01 .. 130 .....	19	15133-06J01 .. 150 .....	25	16650-43G01 .. 111 .....	11	16784-V0700 .. 186 .....	36						
11033-43G03 .. 118 .....	15	12209-MA70A .. 120 .....	17	13224-0W800 .. 111 .....	11	15133-54T00 .. 213 .....	43	16666-43G0A .. 185 .....	31	16785-V0700 .. 186 .....	36						
11039-40K02 .. 111 .....	11	12210-MA70A .. 120 .....	17	13231-54T02 .. 130 .....	19	15134-6150A .. 213 .....	43	16670-43G0A .. 185 .....	31	16788-V0700 .. 186 .....	36						
11042-40K0J .. 102 .....	7	12211-MA70A .. 120 .....	17	13234-43G01 .. 130 .....	19	15134-MA70A .. 150 .....	25	16678-43G0A .. 185 .....	31	16794-10G00 .. 164 .....	29						
11044-43G01 .. 111 .....	11	12212-MA70A .. 120 .....	17	13238-43G00 .. 130 .....	19	15191-41K00 .. 135 .....	21	16680-40K00 .. 185 .....	31	.. 185 .....	31						
11044-43G02 .. 111 .....	11	12279-43G05 .. 110 .....	9	13252-43G02 .. 130 .....	19	15192-41K00 .. 135 .....	21	16681-40K00 .. 185 .....	31	.. 210 .....	41						
11044-43G03 .. 111 .....	11	12280-37503 .. 120 .....	17	13255-43G00 .. 130 .....	19	15208-43G0A .. 150 .....	25	16682-40K00 .. 185 .....	31	16799-V0700 .. 186 .....	36						
11056-09D61 .. 111 .....	11	12280-37504 .. 120 .....	17	13256-43G01 .. 130 .....	19	15213-43G01 .. 110 .....	9	16683-40K00 .. 185 .....	31	16811-54T00 .. 186 .....	33						

# PART NUMBER INDEX

PART NO.	SEC.NO.	PAGE NO.	PART NO.	SEC.NO.	PAGE NO.	PART NO.	SEC.NO.	PAGE NO.	PART NO.	SEC.NO.	PAGE NO.	PART NO.	SEC.NO.	PAGE NO.	PART NO.	SEC.NO.	PAGE NO.																																									
16814-43G01 ..	186	..... 33	19207-40K00 ..	186	..... 35	19270-V7213 ..	186	..... 37	23215-54A00 ..	231	..... 51	<b><u>A0000</u></b>	A7335-U0110 ..	164	.....	29																																										
16815-43G00 ..	186	..... 33	19207-40K01 ..	186	..... 36	19270-V7214 ..	186	..... 37	23230-02N0A ..	231	..... 51							<b><u>K0000</u></b>	KP710-00150 ..	110	.....	9																																				
.. 186	..... 34	19207-40K02 ..	186	..... 36	19270-V7215 ..	186	..... 37	23245-P3005 ..	231	..... 51	<b><u>K0000</u></b>													.. 135	.....	21																																
16821-V0700 ..	186	..... 33	19207-40K03 ..	186	..... 36	19270-V7216 ..	186	..... 37	23300-6K200 ..	233																		..... 55	<b><u>K0000</u></b>	.. 135	.....	21																										
16822-V0700 ..	186	..... 33	19207-87G00 ..	186	..... 36	19270-V7217 ..	186	..... 37	23305-09500 ..	233																		..... 55						<b><u>K0000</u></b>	.. 135	.....	21																					
16823-V0700 ..	186	..... 33	19207-87G01 ..	186	..... 36	19271-35V00 ..	186	..... 35	23306-6T000 ..	233																		..... 55											<b><u>K0000</u></b>	.. 135	.....	21																
16824-V0700 ..	186	..... 33	19207-87G02 ..	186	..... 36	19272-35V00 ..	186	..... 35	23310-0Y000 ..	233																		..... 55																<b><u>K0000</u></b>	.. 135	.....	21											
16825-44G00 ..	186	..... 33	19207-V0700 ..	186	..... 36	19273-35V00 ..	186	..... 35	23312-6T000 ..	233																		..... 55																					<b><u>K0000</u></b>	.. 135	.....	21						
16826-V0700 ..	186	..... 33	19207-V0701 ..	186	..... 36	19275-40K00 ..	186	..... 34	23318-6T000 ..	233																		..... 55																										<b><u>K0000</u></b>	.. 135	.....	21	
16827-14G03 ..	186	..... 33	19207-V0702 ..	186	..... 36	19277-40K00 ..	186	..... 36	23319-M4900 ..	233																		..... 55																														
16829-V0700 ..	186	..... 33	19207-V0703 ..	186	..... 36	19290-06J01 ..	186	..... 35	23322-6T000 ..	233		..... 55	<b><u>K0000</u></b>	.. 135	.....	21																																										
16847-16A70 ..	186	..... 36	19207-V0704 ..	186	..... 36	19290-43G00 ..	186	..... 35	23333-W2500 ..	233		..... 55						<b><u>K0000</u></b>	.. 135	.....	21																																					
16854-V0700 ..	186	..... 33	19207-V0705 ..	186	..... 36	19290-43G01 ..	186	..... 35	23337-0Y000 ..	233	..... 55	<b><u>K0000</u></b>											.. 135	.....	21																																	
16855-V0700 ..	186	..... 33	19207-V0706 ..	186	..... 36	19290-43G02 ..	186	..... 35	23338-M4900 ..	233	..... 55																<b><u>K0000</u></b>	.. 135	.....	21																												
16860-43G01 ..	186	..... 36	19207-V0707 ..	186	..... 36	19295-V0700 ..	186	..... 35	23340-0Y000 ..	233	..... 55																					<b><u>K0000</u></b>	.. 135	.....	21																							
16865-V0700 ..	186	..... 36	19207-W1700 ..	186	..... 36	19296-V0700 ..	186	..... 35	23341-10G00 ..	233	..... 55																										<b><u>K0000</u></b>	.. 135	.....	21																		
16865-V0701 ..	186	..... 36	19208-V0700 ..	186	..... 35	19297-V0700 ..	186	..... 35	23343-6T000 ..	233	..... 55																															<b><u>K0000</u></b>	.. 135	.....	21													
16866-V0700 ..	186	..... 36	19208-V0701 ..	186	..... 35				23344-57J05 ..	233	..... 55																																				<b><u>K0000</u></b>	.. 135	.....	21								
16870-V0701 ..	186	..... 36	19208-V0702 ..	186	..... 35				23354-6T000 ..	233	..... 55																																									<b><u>K0000</u></b>	.. 135	.....	21			
16872-V0701 ..	186	..... 36	19208-V0703 ..	186	..... 35				23357-6T000 ..	233	..... 55																																														<b><u>K0000</u></b>	.. 135
16876-43G00 ..	186	..... 36	19208-V0704 ..	186	..... 35				23358-07G00 ..	233	..... 55		<b><u>K0000</u></b>	.. 135	.....	21																																										
16880-V0700 ..	186	..... 33	19209-V0700 ..	186	..... 35	21010-40K05 ..	210	..... 41	23363-07G00 ..	233	..... 55							<b><u>K0000</u></b>	.. 135	.....	21																																					
16880-V0701 ..	186	..... 33	19210-16A00 ..	186	..... 35	21014-34N01 ..	210	..... 41	23378-57J05 ..	233	..... 55	<b><u>K0000</u></b>											.. 135	.....	21																																	
16880-V0702 ..	186	..... 33	19211-V0700 ..	186	..... 35	21060-90073 ..	210	..... 41	23379-57J05 ..	233	..... 55																<b><u>K0000</u></b>	.. 135	.....	21																												
16880-V0703 ..	186	..... 33	19212-35V00 ..	186	..... 35	21113-90003 ..	135	..... 21	23465-M4900 ..	233	..... 55																					<b><u>K0000</u></b>	.. 135	.....	21																							
16880-V0704 ..	186	..... 33	19221-R8100 ..	186	..... 35	21200-05D02 ..	210	..... 41	23470-6T000 ..	233	..... 55																										<b><u>K0000</u></b>	.. 135	.....	21																		
16880-V0705 ..	186	..... 33	19230-10H00 ..	186	..... 34	21304-34N00 ..	213	..... 43	23528-18G0A ..	231	..... 51																															<b><u>K0000</u></b>	.. 135	.....	21													
16882-06J00 ..	186	..... 34	19235-V0700 ..	186	..... 34	21305-54T0A ..	213	..... 43	24210-S090A ..	230	..... 49																																				<b><u>K0000</u></b>	.. 135	.....	21								
16882-06J01 ..	186	..... 34	19236-V0700 ..	186	..... 34	21334-02N00 ..	150	..... 25	24211-89944 ..	111	..... 11																																									<b><u>K0000</u></b>	.. 135	.....	21			
16882-06J02 ..	186	..... 34	19240-40K01 ..	186	..... 34	.. 213	..... 43	.. 164	..... 29																																																<b><u>K0000</u></b>	.. 135
16882-06J03 ..	186	..... 34	19242-69T00 ..	186	..... 35	21334-05D04 ..	213	..... 43	.. 210	..... 41				<b><u>K0000</u></b>	.. 135	.....	21																																									
16882-06J04 ..	186	..... 34	19243-43G00 ..	186	..... 36	21355-54T00 ..	213	..... 43	.. 213	..... 43								<b><u>K0000</u></b>	.. 135	.....	21																																					
16882-06J05 ..	186	..... 34	19243-43G00 ..	186	..... 35	22316-T820D ..	118	..... 15	.. 213	..... 43			<b><u>K0000</u></b>										.. 135	.....	21																																	
16882-06J06 ..	186	..... 34	19244-06J00 ..	186	..... 36	22630-10G00 ..	210	..... 41	25080-89903 ..	210	..... 41																	<b><u>K0000</u></b>	.. 135	.....	21																											
16882-06J07 ..	186	..... 34	19244-06J01 ..	186	..... 36	23100-02N2A ..	231	..... 51	25240-Z550A ..	150	..... 25																					<b><u>K0000</u></b>	.. 135	.....	21																							
16882-06J08 ..	186	..... 34	19244-06J02 ..	186	..... 35	23102-R8101 ..	231	..... 51																			<b><u>K0000</u></b>										.. 135	.....	21																			
16884-06J00 ..	186	..... 34	19244-43G00 ..	186	..... 35	23108-02N2A ..	231	..... 51																																	<b><u>K0000</u></b>	.. 135	.....	21														
16884-06J01 ..	186	..... 34	19244-R8800 ..	186	..... 35	23118-43G0A ..	231	..... 51																																						<b><u>K0000</u></b>	.. 135	.....	21									
16884-06J02 ..	186	..... 34	19247-R8300 ..	186	..... 36	23120-58S00 ..	231	..... 51	30412-P5100 ..	110	..... 9																																									<b><u>K0000</u></b>	.. 135	.....	21			
16884-06J03 ..	186	..... 34	19247-V0700 ..	186	..... 36	23127-43G08 ..	231	..... 51	30430-90013 ..	135	..... 21																																														<b><u>K0000</u></b>	.. 135
16884-06J04 ..	186	..... 34	19247-W3300 ..	186	..... 37	23129-05E06 ..	231	..... 51	33296-43G00 ..	230	..... 49				<b><u>K0000</u></b>	.. 135	.....																																		21							
16884-V0704 ..	186	..... 34	19251-40K00 ..	186	..... 35	23131-16A0A ..	231	..... 51	33320-40K00 ..	135	..... 21							<b><u>K0000</u></b>	.. 135	.....	21																																					
16884-V0709 ..	186	..... 34	19252-43G00 ..	186	..... 35	23131-W170A ..	231	..... 51	33378-40K00 ..	135	..... 21			<b><u>K0000</u></b>									.. 135	.....	21																																	
17521-41K00 ..	164	..... 29	19253-V0700 ..	186	..... 35	23135-V6600 ..	231	..... 51	33379-40K00 ..	135	..... 21																	<b><u>K0000</u></b>	.. 135	.....	21																											
19200-V0700 ..	186	..... 35	.. 186	..... 36	23137-V7201 ..	231	..... 51					<b><u>K0000</u></b>	.. 135																			.....	21																									
19202-40K00 ..	186	..... 35	19260-37502 ..	186	..... 34	23142-V6600 ..	231	..... 51																											<b><u>K0000</u></b>	.. 135	.....	21																				
19204-40K00 ..	186	..... 35	19264-35V00 ..	186	..... 35	23150-43G0A ..	231	..... 51	69170-L1400 ..	135	..... 21																														<b><u>K0000</u></b>	.. 135	.....	21														
19205-40K02 ..	186	..... 35	19264-40K01 ..	186	..... 36	23153-43G0A ..	231	..... 51	69190-41K01 ..	135	..... 21																																			<b><u>K0000</u></b>	.. 135											