



2.0t ~ 3.8t X 系列内燃平衡重式叉车

2.0t ~ 3.8t X Series Internal Combustion Counterbalanced Forklift Truck

门架零件目录

MAST PARTS CATALOG

10/2018



杭叉集团股份有限公司

HANGCHA GROUP CO., LTD.

全国客服热线：400-884-7888

- 地址：中国浙江省杭州市临安区相府路 666 号
- 电话：0571-88926666 (总机号) 85191117
- 传真：0571-85131772 ■ 邮编：311305
- 网站：<http://www.zjhc.cn> ■ 电子邮件：sales@zjhc.cn

- Address For: OVERSEAS USERS
- Address: 666 Xiangfu Road, Lin'an ,Hangzhou,Zhejiang, China
- ZIP:311305
- Fax: 0086-571-88926789 0086-571-88132890
- Web: <http://www.hcforlift.com> ■ E-mail: sales@hcforlift.com

说明

- 1、本“零件目录”汇集了 2.0t—3.8t X 系列各种叉车的 2 级宽视野门架、2 级全自由门架、3 级全自由门架零部件。
- 2、查询方法：
 - ① 用户可根据叉车的额定载荷、门架的型式查找所需的零部件的序号,根据序号可查得相应的图号或标准号。
 - ② 在目录的右上角表示此总成所适用的额定载荷、门架的型式,不通用零件在备注中说明,此外不同起升高度所对应的零件请在附表中区
别查询。
- 3、订购零件时,须写明所用叉车的型号,出厂编号,门架高度,所需零部件物料码、名称及订购数量。
- 4、维修更换零部件时,为确保质量,请使用本厂零部件。
- 5、为提高质量,本厂将对某些零部件进行改进,对改进部分在本目录中不能同时一一修改,请用户谅解,欲了解详细情况可与本集团销售公司及配件分公司联系。

INFORMATION

- I. This catalogue collects all the parts (components) in series of 2-3.8 ton X fork lift trucks, such as SIMPLEX, DUPLEX and TRIPLEX.
- II. Looking up methods:
 - I) Users can lookup the part (component) series number according to the truck's rated load and mast types, and then you can find the drawing codes and standards of the part (the component) in terms of the series number.
 - II) On the top right corner, there is an expression of rated load and mast types which are applicable for this assy. Furthermore, please lookup the parts (components) which used for different lift height distinctively in the Schedule.
- III. When you order the parts (components), the truck's Model, factory number, mast height, code Number of drawing, name and quantity should be given when ordering the parts or the components.
- IV. It is recommended to use the parts and components made by us for ideal the service and maintenance.
- V. We reserve the right of the change of the truck in construction for improving our products without notice. For the details of changes, please consult with sales department of Hangzhou Forklift Truck Co., Ltd.

缩写及代码：	Abbreviations and codes：
A1,A2,A3·····总成序号	A1,A2,A3·····Item,Assy
Assy·····总成或组件	Assy·····Assembly
INC·····包含	INC·····Including
非内置式·····不带侧移或带外挂式侧移的门架	Non-built-in·····Without Side shifter or with Hanging outside Side shifter for Mast
内置式·····内置式侧移门架	Built-in·····With Built-in Side shifter for Mast
B 变速箱·····冈村变速箱	B transmission·····Okamura transmission
F 变速箱·····国产变速箱	F transmission·····Chinese transmission
MS 变速箱·····韩国变速箱	MS transmission·····Korea transmission

序号 Item	名称 Description	适用车型 Serial NO.	页码 Page
图 I Fig.I	复合滚轮组 Complex rolle assy	2级宽视野门架 2级全自由门架 3级全自由门架 SIMPL EX MAST DUPL EXMAST TRIPL EX MAST	1
图 II Fig. II	纵向滚轮组 Cross roller assv	2级宽视野门架 2级全自由门架 3级全自由门架 SIMPL EX MAST DUPL EXMAST TRIPL EX MAST	2
图 III Fig.III	侧滚轮组 Side roller assv	2级宽视野门架 2级全自由门架 3级全自由门架 SIMPL EX MAST DUPL EXMAST TRIPL EX MAST	3
图 IV Fig. IV	货叉总成 Fork assy	2级宽视野门架 2级全自由门架 3级全自由门架 SIMPL EX MAST DUPL EXMAST TRIPL EX MAST	4
图 V Fig.V	油缸抱箍 Cylinder Hoop	2级宽视野门架 2级全自由门架 3级全自由门架 SIMPL EX MAST DUPL EXMAST TRIPL EX MAST	5
图 VI Fig.VI	链条座 Chain seat	2级全自由门架 3级全自由门架 DUPL EXMAST TRIPL EX MAST	6
图 1 Fig.1	起升组件 Lifting part	2t-3.8t 2级宽视野门架 SIMPL EX MAST	7
图 2 Fig.2	链条总成 Chain assy	2t-3.8t 2级宽视野门架 SIMPL EX MAST	9
	选配表 1 <Optional Parts List 1>	2t-3.8t 2级宽视野门架 SIMPL EX MAST	10
图 3 Fig.3	门架 Mast	2t-3.8t 2级宽视野门架 SIMPL EX MAST	11
	选配表 2 <Optional Parts List 2>	2t-3.8t 2级宽视野门架 SIMPL EX MAST	12
图 4 Fig.4	货叉架总成 Fork shelf assv	2t-3.8t 2级宽视野门架 SIMPL EX MAST	13
图 5 Fig.5	侧移架总成 Side shifter assv	2t-3.8t 2级宽视野门架 SIMPL EX MAST	14
图 6 Fig.6	侧移油缸 Side shift cvlinder	2级宽视野门架 2级全自由门架 3级全自由门架 SIMPL EX MAST DUPL EXMAST TRIPL EX MAST	16

图 7 Fig.7	右升降油缸/Lift cylinder,Right 左升降油缸/Lift cylinder,Left	2t-3.8t 2级宽视野门架 SIMPLEX MAST	18
--------------	---	------------------------------	----

序号 Item	名称 Description	适用车型 Serial NO.	页码 Page
	选配表 3 <Optional Parts List 3>	2t-3.8t 2级宽视野门架 SIMPLEX MAST	20
图 8-1 Fig.8-1	倾斜油缸 2.0t-3.0t Tilt cylinder 2.0t-3.0t	2级宽视野门架 2级全自由门架 3级全自由门架 SIMPLEX MAST DUPLICEMAST TRIPLEX MAST	23
图 8-2 Fig.8-2	倾斜油缸 3.5t-3.8t Tilt cylinder 3.5t-3.8t	2级宽视野门架 2级全自由门架 3级全自由门架 SIMPLEX MAST DUPLICEMAST TRIPLEX MAST	26
图 9 Fig.9	油路系统 Mast piping	2t-3.8t 2级宽视野门架 SIMPLEX MAST	29
	选配表 4 <Optional Parts List 4>	2t-3.8t 2级宽视野门架 SIMPLEX MAST	31
图 10 Fig.10	侧移油路 lateral moving circuit	2t-3.8t 2级宽视野门架 SIMPLEX MAST	32
	选配表 5 <Optional Parts List 5>	2t-3.8t 2级宽视野门架 SIMPLEX MAST	34
图 11 Fig.11	第四联油路 Fourth oil	2t-3.8t 2级宽视野门架 SIMPLEX MAST	35
	选配表 6 <Optional Parts List 6>	2t-3.8t 2级宽视野门架 SIMPLEX MAST	37
图 12 Fig.12	起升组件 Lifting part	2t-3.8t 2级全自由门架 DUPLEX MAST	38
	选配表 7 <Optional Parts List 7>	2t-3.8t 2级全自由门架 DUPLEX MAST	41
图 13 Fig.13	链条总成 Chain assy	2t-3.8t 2级全自由门架 DUPLEX MAST	42
	选配表 8 <Optional Parts List 8>	2t-3.8t 2级全自由门架 DUPLEX MAST	43

图 14 Fig.14	货叉架总成 Fork shelf assy	2t-3.8t 2级全自由门架 DUPLEX MAST	44
图 15 Fig.15	侧移架总成 Side shifter assv	2t-3.8t 2级全自由门架 DUPLEX MAST	45

序号 Item	名称 Description	适用车型 Serial NO.	页码 Page
图 16 Fig.16	右升降油缸/Lift cylinder,Right 左升降油缸/Lift cvlinder.Left	2t-3.8t 2级全自由门架 DUPLEX MAST	47
	选配表 9 <Optional Parts List 9>	2t-3.8t 2级全自由门架 DUPLEX MAST	50
图 17 Fig.17	短升降油缸 Lift cvlinder.Short	2t-3.8t 2级全自由门架 DUPLEX MAST	53
	选配表 10 <Optional Parts List 10>	2t-3.8t 2级全自由门架 DUPLEX MAST	57
图 18 Fig.18	油路系统 Mast piping	2t-3.8t 2级全自由门架 DUPLEX MAST	60
	选配表 11 <Optional Parts List 11>	2t-3.8t 2级全自由门架 DUPLEX MAST	62
图 19 Fig.19	侧移油路 lateral moving circuit	2t-3.8t 2级全自由门架 DUPLEX MAST	63
	选配表 12 <Optional Parts List 12>	2t-3.8t 2级全自由门架 DUPLEX MAST	67
图 20 Fig.20	第四联油路 Fourth oil	2t-3.8t 2级全自由门架 DUPLEX MAST	68
	选配表 13 <Optional Parts List 13>	2t-3.8t 2级全自由门架 DUPLEX MAST	70
图 21 Fig.21	起升组件 Lifting part	2t-3.8t 3级全自由门架 TRIPLEX MAST	71
图 22 Fig.22	链条总成 Chain assy	2t-3.8t 3级全自由门架 TRIPLEX MAST	74

	选配表 14 <Optional Parts List 14>	2t-3.8t 3级全自由门架 TRIPLEX MAST	76
图 23 Fig.23	门架 Mast	2t-3.8t 3级全自由门架 TRIPLEX MAST	77

序号 Item	名称 Description	适用车型 Serial NO.	页码 Page
	选配表 15 <Optional Parts List 15>	2t-3.8t 3级全自由门架 TRIPLEX MAST	78
图 24 Fig.24	货叉架总成 Fork shelf assv	2t-3.8t 3级全自由门架 TRIPLEX MAST	80
图 25 Fig.25	侧移架总成 Side shifter assv	2t-3.8t 3级全自由门架 TRIPLEX MAST	81
图 26 Fig.26	右升降油缸/Lift cylinder,Right 左升降油缸/Lift cylinder,Left	2t-3.8t 3级全自由门架 TRIPLEX MAST	83
	选配表 16 <Optional Parts List 16>	2t-3.8t 3级全自由门架 TRIPLEX MAST	86
图 27 Fig.27	短升降油缸 Lift cylinder,Short	2t-3.8t 3级全自由门架 TRIPLEX MAST	89
	选配表 17 <Optional Parts List 17>	2t-3.8t 3级全自由门架 TRIPLEX MAST	93
图 28 Fig.28	油路系统 Mast piping	2t-3.8t 3级全自由门架 TRIPLEX MAST	96
	选配表 18 <Optional Parts List 18>	2t-3.8t 3级全自由门架 TRIPLEX MAST	99
图 29 Fig.29	侧移油路 lateral moving circuit	2t-3.8t 3级全自由门架 TRIPLEX MAST	101
	选配表 19 <Optional Parts List 19>	2t-3.8t 3级全自由门架 TRIPLEX MAST	104

图 30	第四联油路 Fourth oil	2t-3.8t 3级全自由门架 TRIPLEX MAST	105
	选配表 20 <Optional Parts List 20>	2t-3.8t 3级全自由门架 TRIPLEX MAST	107

图 I 复合滚轮组
Fig.I Complex rolle assy

2级宽视野门架 2级全自由门架 3级全自由门架
SIMPLEX MAST DUPLEX MAST TRIPLEX MAST

序号 Item	物料码 Part No	名称 Description	数量 Qty	备注或适用车型 Remarks or Serial NO	原物料码 Original Part No
A	209500020002	复合滚轮组 Complex rolle assy	1		XR30M300-007000-000
B	209500050001	复合滚轮组 Complex rolle assy	1		XR30M300-304000-000
C	209500020003	复合滚轮组 Complex rolle assy	1		XR30M300-305000-000
1	209500040004	调整垫片 Ajusting shim	1		XR30M300-007002-000
2	209500040003	调整垫片 Ajusting shim	2		XR30M300-007001-000
3	209500030002	侧滚轮组 Side roller assy	1		XR30M300-007100-G00
4	209500030003	纵向滚轮 Longitudinal roller	1		XR30M300-303100-G00
5	209500040005	调整垫片 Ajusting shim	1		XR30M300-304001-000
6	209500040006	调整垫片 Ajusting shim	1		XR30M300-304002-000
7	209500080017	滑块 Sliding block	1		XR30M300-304003-000

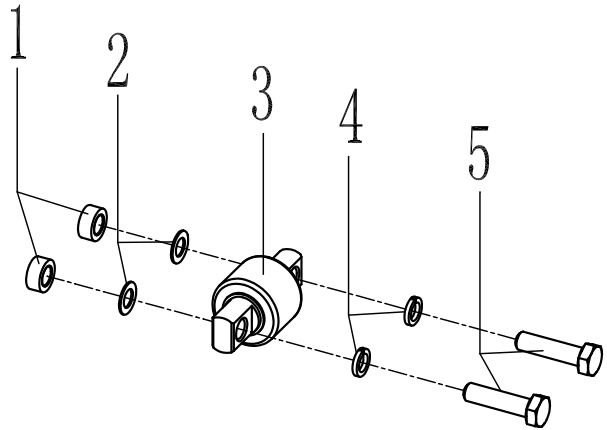
图 III 侧滚轮组 Fig.III Side roller assy	2级宽视野门架 2级全自由门架 3级全自由门架 SIMPLEX MASTDUPLEXMASTRIPLEX MAST					
	序号 Item	物料码 Part No	名称 Description	数量 Qty	备注或适用车型 Remarks or Serial NO	原物料码 Original Part No
	E	209500070002	侧滚轮组 Side roller assy	1		XR30M300-302000-000
	1	209500090005	衬套 liner	2		XR30M300-302002-000
	2	209500090057	调整垫片 Adjuster	2		3U3H-300001
	3	209500080020	侧滚轮 Side roller	1		X25M300-302100-G00
	4	300030010001	垫圈 12 Washer 12	2		G000093-000010-00
	5	300010030014	螺栓 M12×40 Bolt M12×40	2		G005782-010045-00

图 IV 货叉总成 Fig.IV Fork assy		2级宽视野门架 2级全自由门架 3级全自由门架 SIMPLEX MAST DUPLICATE MAST TRIPLEX MAST				
	序号 Item	物料码 Part No	名称 Description	数量 Qty	备注或适用车型 Remarks or Serial NO	原物料码 Original Part No
	A1	209500240094	货叉总成	1	2t-2.5t	N25M300-010000-000
	A2	209500240075	货叉总成	1	3t	N30M300-010000-000
	A3	209500240055	货叉总成	1	3.5t-3.8t	N35M300-010000-000
	1	NO PART NO.	货叉体	1		
	2	209500260051	销轴组件	1	2t-2.5t	N25M300-011000-W00
	2	209500260047	销轴组件	1	3t-3.8t	N30M300-011000-W00
	2-1	NO PART NO.	把手	1		
	2-2	NO PART NO.	弹簧	1		
	2-3	NO PART NO.	销轴	1		

图V 油缸抱箍
Fig.V Cylinder Hoop

2级宽视野门架 2级全自由门架 3级全自由门架
SIMPLEX MAST DUPLICATE MAST TRIPLEX MAST

序号 Item	物料码 Part No	名称 Description	数量 Qty	备注或适用车型 Remarks or Serial NO	原物料码 Original Part No
A1	209500160006	油缸抱箍	1	2t-2.5t	XR25M300-001000-000
A2	209500160005	油缸抱箍	1	3t	XR30M300-001000-000
A3	209500160003	油缸抱箍	1	3.5t-3.8t	XR35M300-001000-000
1	209500170081	U形螺栓	1	2t-2.5t	AH25D450-001002-000
1	209500170079	U形螺栓	1	3t	AH30D450-001002-000
1	209500170077	U形螺栓	1	3.5t-3.8t	AH35D450-001002-000
2	209500180005	橡胶垫	1	2t-2.5t	XR25M300-001102-000
2	209500180002	橡胶垫	1	3t-3.8t	XR30M300-001102-000
3	209500180005	支撑板	1	2t-2.5t	XR25M300-001102-000
3	209500180002	支撑板	1	3t-3.8t	XR30M300-001102-000

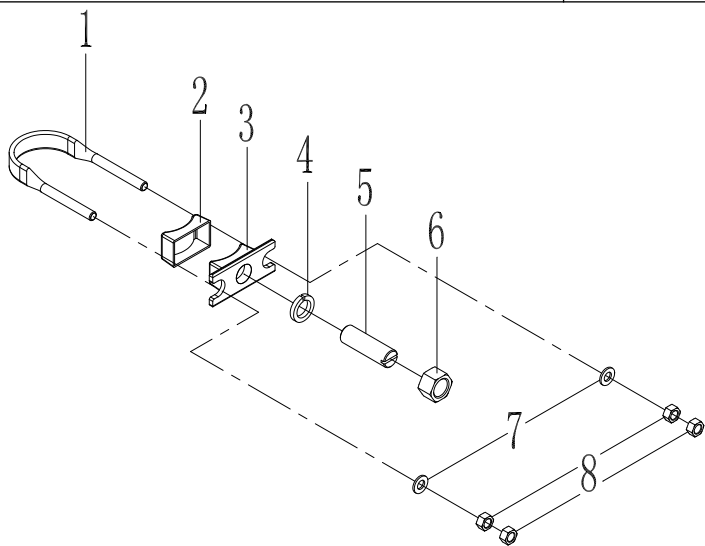


图 1 起升组件 Fig.1 Lifting part	2级宽视野门架 SIMPLEX MAST					
	序号 Item	物料码 Part No	名称 Description	数量 Qty	备注或适用车型 Remarks or Serial NO	原物料码 Original Part No
	1	见图 3	门架	1		
	2	见图 2	链条总成	2		
	3	209750010071	挡货架	1	2t~2.5t	N25M300-020000-000
	3	209750010008	挡货架	1	3t~3.8t	N30M300-020000-002
	4	209500210024	销轴	2		N30N450-001000-000
	5	300170040002	油杯 M10×1	4		G001152-010001-00
	6	209500270217	螺栓 M10×1.25×20	4		N30M300-004000-000
	7	见图 7	左升降油缸	1		

	8	见图 7	右升降油缸	1		
	9	见图 IV	货叉总成	1		
	10	见图 4	货叉架总成	1		
	10	见图 5	侧移架总成	1		
	11	300030040002	垫圈 10	2		G0097P1-000010-00
	12	300030010001	垫圈 10	2		G000093-000010-00
	13	300040020075	螺钉 M10×30	2		G000070-010030-00

	<p>图 1 起升组件 Fig.1 Lifting part</p> <p style="text-align: center;">2 级宽视野门架 SIMPLEX MAST</p>					
	序号 Item	物料码 Part No	名称 Description	数量 Qty	备注或适用车型 Remarks or Serial NO	原物料码 Original Part No
	14	209500270228	油缸调整垫圈	2		N30M300-000012-000
	15	300030040003	垫圈 12	2		G0097P1-000012-00
	16	300030010002	垫圈 12	3		G000093-000012-00
	17	300010060030	螺栓 M12×1.25×40	2		G005786-012040-00
	18	见图 V	油缸抱箍	2		
	19	见图 9	油路系统	1		
	20	300040020151	螺钉 M12×20	1		G000070-012020-00

	21	300030040004	垫圈 14	8		G0097P1-000014-00
	22	300030010003	垫圈 14	8		G000093-000014-00
	23	300010060060	螺栓 M14×1.5×35	8		G005786-014035-01
	24	见图 8-1 See Fig.8-1	倾斜油缸	2	2.0t-3.0t	
	24	见图 8-2 See Fig.8-2	倾斜油缸	2	3.5t-3.8t	
	25	209500210028	销轴	2		N30M300-001000-000

图 2 链条总成 Fig.2 Chain assy	2 级宽视野门架 SIMPLEX MAST					
	序号 Item	物料码 Part No	名称 Description	数量 Qty	备注或适用车型 Remarks or Serial NO	原物料码 Original Part No
	A1	选配表 1	链条总成	1	2t-3t	
	A2	选配表 1	链条总成	1	3.5t-3.8t	
	1	NO PART NO.	板式链 LH1623×N	1	2t-3t	
	1	NO PART NO.	板式链 LH1634×N	1	3.5t-3.8t	
	2	300050010038	销 3×20	2	2t-3t	G000091-003020-00
	2	300050010027	销 3.2×20	2	3.5t-3.8t	G000091-3P2020-00

	3	NO PART NO.	销轴	2	2t-3t	
	3	NO PART NO.	销轴	2	3.5t-3.8t	
	4	NO PART NO.	链条接头	1	2t-3t	
	4	NO PART NO.	链条接头	1	3.5t-3.8t	
	5	300050010013	销 2.5×28	1		G000091-2P5028-00
	6	300020020009	螺母 M20×1.5	5		G006171-000020-02
	7	NO PART NO.	链条接头	1	2t-3t	
	7	NO PART NO.	链条接头	1	3.5t-3.8t	

选配表 1 <Optional Parts List 1>

序号 Item	A1(2t-3t)		A2(3.5t-3.8t)	
	物料码 Part No.	原物料码 Original Part No.	物料码 Part No.	原物料码 Original Part No.
起升高度 Lift Height				
2000	209500190089	LH-1623055-100	209500190101	LH-1634061-100
2500	209500190055	LH-1623065-100	209500190157	LH-1634071-100
2700	209500190197	LH-1623069-100	209500190056	LH-1634075-100
3000	209500190051	LH-1623075-100	209500190118	LH-1634081-100
3300	209500190053	LH-1623081-100	209500190113	LH-1634087-100
3500	209500190178	LH-1623085-100	209500190929	LH-1634091-100
3600	209500190040	LH-1623089-100	209500190930	LH-1634093-100

3700	209500190977	LH-1623091-100	209500190947	LH-1634095-100
4000	209500190071	LH-1623099-100	209500190932	LH-1634105-100
4300	209500190979	LH-1623105-100	209500190933	LH-1634111-100
4500	209500190980	LH-1623109-100	209500190934	LH-1634115-100
4700	209500190981	LH-1623113-100	209500190935	LH-1634119-100
4800	209500190982	LH-1623115-100	209500190895	LH-1634121-100
5000	209500190983	LH-1623119-100	209500190021	LH-1634125-100
5500	209500190984	LH-1623129-100	209500190938	LH-1634135-100
6000	209500190985	LH-1623139-100	209500190939	LH-1634145-100

图3 门架 Fig.3 Mast	2级宽视野门架 SIMPLEX MAST					
	序号 Item	物料码 Part No	名称 Description	数量 Qty	备注或适用车型 Remarks or Serial NO	原物料码 Original Part No
	1	选配表 2	外门架	1		
2	209500020002	复合滚轮组 Complex rolle assy	4	图 I Fig.I	XR30M300-007000-000	

	3	209500270224	调整垫片	2		N30M300-000015-000
	4	209500270211	导轨衬垫	2		N30M300-000014-000
	5	300170040002	油杯 M10×1	2		G001152-010001-00
	6	209500220005	轴瓦	2		A30M300-000006-000
	7	209500230137	轴承盖	2		A30M300-000005-000
	8	300030010006	垫圈 20	2		G000093-000020-00
	9	300010050053	螺栓 M20×1.5×110	2		G005785-020110-01
	10	选配表 2	内门架	1		
	11	208850010006	链轮	2	2t-3t	780309K-G00
	11	208850010004	链轮	2	3.5t-3.8t	780709H-G00
	12	300060030017	轴用弹性挡圈-A型45	2		G0894P1-000045-00

选配表 2<Optional Parts List 2>

序号 Item	1(2t-3t)	10(2t-3t)	1(3.5t-3.8t)	10(3.5t-3.8t)
起升高度 Lift Height	物料码 Part No.	物料码 Part No.	物料码 Part No.	物料码 Part No.

2000	209550000506	209650000481	209550000472	209650000448
2500	209550000507	209650000482	209550000473	209650000449
2700	209550000508	209650000483	209550000474	209650000450
3000	209550010033	209650010032	209550010029	209650010028
3300	209550000509	209650000484	209550000475	209650000451
3500	209550000510	209650000485	209550000476	209650000452
3600	209550000511	209650000486	209550000477	209650000453
3700	209550000512	209650000487	209550000478	209650000454
4000	209550000513	209650000488	209550000479	209650000455
4300	209550000514	209650000489	209550000480	209650000456
4500	209550000515	209650000490	209550000481	209650000457
4700	209550000516	209650000491	209550000482	209650000458
4800	209550000517	209650000492	209550000483	209650000459
5000	209550000518	209650000493	209550000484	209650000460
5500	209550000519	209650000494	209550000485	209650000461
6000	209550000520	209650000495	209550000486	209650000462

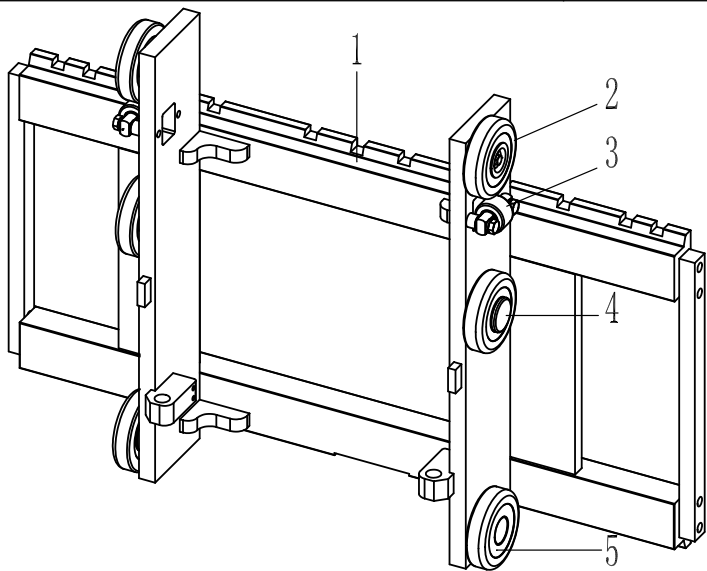
选配表 2<Optional Parts List 2>

序号	1(2t-3t)	10(2t-3t)	1(3.5t-3.8t)	10(3.5t-3.8t)
----	----------	-----------	--------------	---------------

Item				
起升高度 Lift Height	原物料码 Original Part No.	原物料码 Original Part No.	原物料码 Original Part No.	原物料码 Original Part No.
2000	XR30M200-100000-000	XR30M200-200000-000	XR35M200-100000-000	XR35M200-200000-000
2500	XR30M250-100000-000	XR30M250-200000-000	XR35M250-100000-000	XR35M250-200000-000
2700	XR30M270-100000-000	XR30M270-200000-000	XR35M270-100000-000	XR35M270-200000-000
3000	XR30M300-100000-000	XR30M300-200000-000	XR35M300-100000-000	XR35M300-200000-000
3300	XR30M330-100000-000	XR30M330-200000-000	XR35M330-100000-000	R35M330-200000-000
3500	XR30M350-100000-000	XR30M350-200000-000	XR35M350-100000-000	XR35M350-200000-000
3600	XR30M360-100000-000	XR30M360-200000-000	XR35M360-100000-000	XR35M360-200000-000
3700	XR30M370-100000-000	XR30M370-200000-000	XR35M370-100000-000	XR35M370-200000-000
4000	XR30M400-100000-000	XR30M400-200000-000	XR35M400-100000-000	XR35M400-200000-000
4300	XR30M430-100000-000	XR30M430-200000-000	XR35M430-100000-000	XR35M430-200000-000
4500	XR30M450-100000-000	XR30M450-200000-000	XR35M450-100000-000	XR35M450-200000-000
4700	XR30M470-100000-000	XR30M470-200000-000	XR35M470-100000-000	XR35M470-200000-000
4800	XR30M480-100000-000	XR30M480-200000-000	XR35M480-100000-000	XR35M480-200000-000
5000	XR30M500-100000-000	XR30M500-200000-000	XR35M500-100000-000	XR35M500-200000-000
5500	XR30M550-100000-000	XR30M550-200000-000	XR35M550-100000-000	XR35M550-200000-000
6000	XR30M600-100000-000	XR30M600-200000-000	XR35M600-100000-000	XR35M600-200000-000

图4 货叉架总成
Fig.4 Fork shelf assy

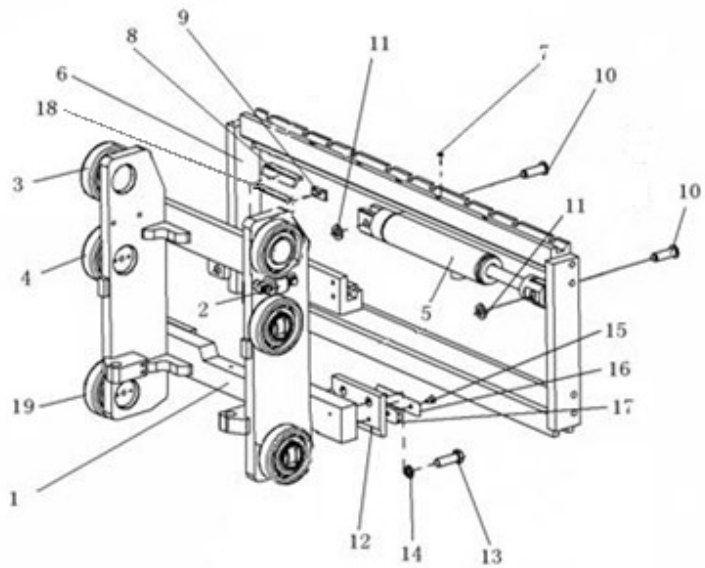
2级宽视野门架 SIMPLEX MAST



序号 Item	物料码 Part No	名称 Description	数量 Qty	备注或适用车型 Remarks or Serial NO	原物料码 Original Part No
A1	209700000065	货叉架总成	1	2t-2.5t	XR25M300-300000-000
A2	209700000064	货叉架总成	1	3t	XR30M300-300000-000
A3	209700000061	货叉架总成	1	3.5t-3.8t	XR35M300-300000-000
1	209700010043	货叉架	1	2t-2.5t	XR25M300-301000-000
1	209700010042	货叉架	1	3t	XR30M300-301000-000
1	209700010039	货叉架	1	3.5t-3.8t	XR35M300-301000-000
2	209500020001	纵向滚轮组	2	图 II Fig.II	XR30M300-303000-000
3	209500070005	侧滚轮组	2	图 III Fig.III	X25M300-302000-000
4	209500050001	复合滚轮组 Complex rolle assv	2	图 I Fig.I	XR30M300-304000-000
5	209500020003	复合滚轮组 Complex rolle assv	2	图 I Fig.I	XR30M300-305000-000

--	--	--	--	--	--

图5 侧移架总成 Fig.5 Side shifter assy		2级宽视野门架 SIMPLEX MAST				
序号 Item	物料码 Part No	名称 Description	数量 Qty	备注或适用车型 Remarks or Serial NO	原物料码 Original Part No	
A1	209700001066	侧移架总成	1	2t-2.5t	XR25B300-300000-000	
A2	209700001064	侧移架总成	1	3t	XR30B300-300000-000	
A3	209700001065	侧移架总成	1	3.5t-3.8t	XR35B300-300000-000	
1	209700011183	叉架体	1	2t-2.5t	XR25B300-301000-000	
1	209700011181	叉架体	1	3t	XR30B300-301000-000	
1	209700011182	叉架体	1	3.5t-3.8t	XR35B300-301000-000	
2	209500070002	侧滚轮组	2	图III Fig.III	XR30M300-302000-000	
3	209500020001	纵向滚轮组	2	图II Fig.II	XR30M300-303000-000	
4	209500050001	复合滚轮组 Complex rolle assv	2	图I Fig.I	XR30M300-304000-000	
5	209800000293	侧移油缸	1	见图6 See Fig.6	S16V450-303000-000	
6	209700090045	侧移货叉架	1	2t-2.5t	J25V450-302000-000	
6	209700090052	侧移货叉架	1	3t-3.8t	AH35W450-302000-000	
7	300170040003	油杯 M6	5		G001152-006000-00	



	8	209700130048	塞铁	3		S16V450-300001-000
	9	209700150003	挡块	2		1.4QS1-000006

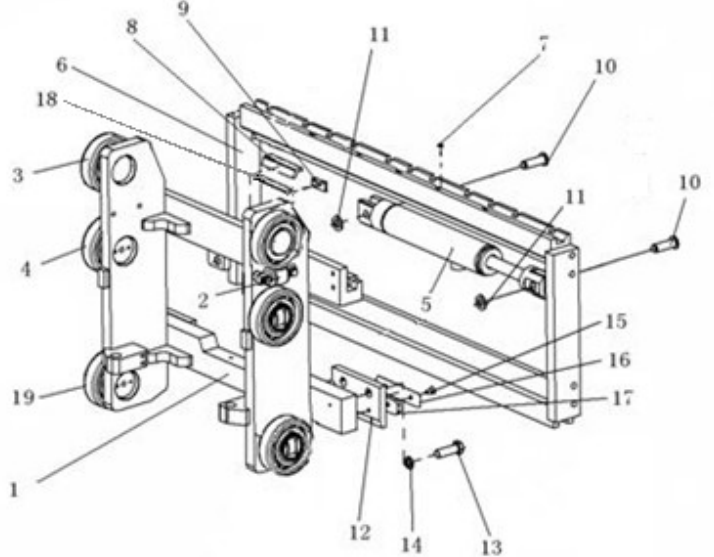
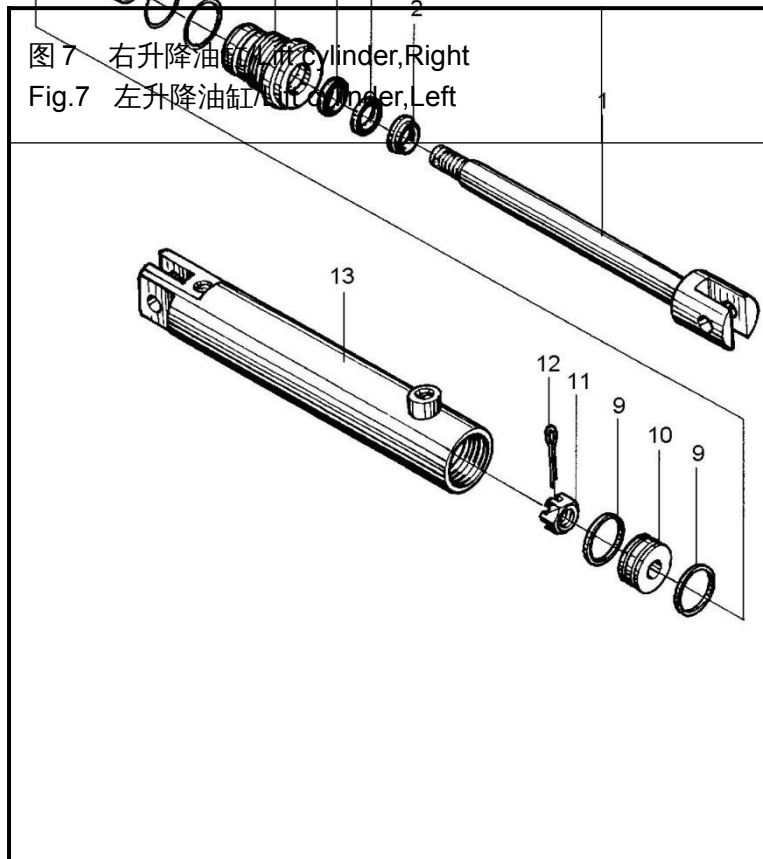
图5 侧移架总成 Fig.5 Side shifter assy		2级宽视野门架 2级全自由门架 3级全自由门架 SIMPLEX MAST DUPLICATE MAST TRIPLEX MAST				
序号 Item	物料码 Part No	名称 Description	数量 Qty	备注或适用车型 Remarks or Serial NO	原物料码 Original Part No	
	10	209700130053	轴	2		S16V450-300005-001
	11	300050010032	销3.2×30	1		G000091-3P2030-00
	12	209700080091	挂钩板	2		S16V450-300006-000
	13	300010060076	螺栓 M16×1.5×50	4		G005786-016050-01
	14	300030010004	垫圈 16	4		G000093-000016-00
	15	300040180016	螺钉 M8×16	4		G000068-008016-00
	16	209700130051	下滑块	2		S16V450-300002-000
	17	209700130049	调整垫	2		S16V450-300008-000
	18	209700130050	调整垫	3		S16V450-300009-000
	19	209500020003	纵向滚轮组	2	图 I Fig.I	XR30M300-305000-000

图6 侧移油缸 Fig.6 Side shift cylinder		2级宽视野门架 2级全自由门架 3级全自由门架 SIMPLEX MAST Duplex MAST TRIPLEX MAST				
序号 Item	物料码 Part No	名称 Description	数量 Qty	备注或适用车型 Remarks or Serial NO	原物料码 Original Part No	
A	209800000293	侧移油缸	1		S16V450-303000-000	
1	209800020136	活塞杆	1		S16V450-303200-000	
2	204100070368	CK防尘圈d25	1		CK-025-G00	
3	204100070366	CKG密封圈d25	1		CKG-025-G00	
4	204100070367	CKS密封圈d25	1		CKS-025-G00	
5	202300030003	导向套	1		2025N4.5-133002	
6	300130010118	O形密封圈56×3.5	1		G001235-005603P5-00	
7	300130010107	O形密封圈50×3.5	1		G001235-005003P5-00	
8	200301030003	含油油衬	1		2025N4.5-133001	
9	202300100016	活塞环	2		3-22-00-10	
10	201700100001	活塞	1		3-22-00-03	

	11	207900070041	六角槽形螺母	1		3-22-00-02
	12	300050010047	销4×36	1		G000091-004036-00
	13	209800010204	油缸体	1		S16V450-303100-000
	K1	820020000002	密封件维修包Seal kit of	1	INC. 2,3,4,6,7	S16V450-303-000-Kit



2级宽视野门架 SIMPLEX MAST

序号 Item	物料码 Part No	名称 Description	数量 Qty	备注或适用车型 Remarks or Serial NO	原物料码 Original Part No
A1	选配表 3	右升降油缸	1		
A2	选配表 3	左升降油缸	1		
1	300060050002	挡圈 24	1	2t-2.5t	G0895P1-000024-00
1	300060050004	挡圈 30	1	3t-3.8t	G0895P1-000026-00
2	209800050072	活塞	1	2t-2.5t	N25M300-400002-W00
2	209800050067	活塞	1	3t	N30M300-400002-W00
2	209800050146	活塞	1	3.5t-3.8t	3.5M3H-400003-W00
3	209800090281	支承圈	1	2t-2.5t	N25M300-400003-W00
3	209800090274	支承圈	1	3t	N30M300-400003-W00
3	209800090646	支承圈	1	3.5t-3.8t	3.5M3H-400004-W00

	4	209800090279	保护圈	1	2t-2.5t	N25M300-400004-W00
	4	209800090265	保护圈	1	3t	N30M300-400004-W00
	4	209800090644	保护圈	1	3.5t-3.8t	3.5M3H-400007-W00
	5	209990000158	OSI 密封圈 D50	1	2t-2.5t	FU0613L0-G00
	注：序号 1,2,13,组装后为不可拆分整体,用户订购时应订购整个组合件。					

图 7 右升降油缸/Lift cylinder,Right Fig.7 左升降油缸/Lift cylinder,Left		2级宽视野门架 SIMPLEX MAST				
序号 Item	物料码 Part No	名称 Description	数量 Qty	备注或适用车型 Remarks or Serial NO	原物料码 Original Part No	
5	209990000159	OSI 密封圈 D56	1	3t	FU2144L0-G00	
5	209990000160	OSI 密封圈 D60	1	3.5t-3.8t	FU0742L0-G00	
6	209800090280	阀套	1	2t-2.5t	N25M300-400005-W00	
6	209800090269	阀套	1	3t	N30M300-400005-W00	
6	209800090261	阀套	1	3.5t-3.8t	N35M300-400005-W00	
7	300060050002	挡圈 24	1	2t-2.5t	G0895P1-000024-00	
7	300060050005	挡圈 30	1	3t-3.8t	G0895P1-000030-00	
8	选配表 3	右缸体	1			
8	选配表 3	左缸体	1			

	9	204100070376	DKI 防尘圈 d40	1	2t-2.5t	FD2342A0-G00
	9	204100070377	DKI 防尘圈 d45	1	3t-3.8t	FD2633A0-G00
	10	204100070389	ISI 密封圈 d40	1	2t-2.5t	FU0497K0-G00
	10	204100070390	ISI 密封圈 d45	1	3t-3.8t	FU0567K0-G00
	11	209800030058	导向套	1	2t-2.5t	N25M300-402000-W00
注：序号 1,2,13,组装后为不可拆分整体,用户订购时应订购整个组合件。						

图 7 右升降油缸/Lift cylinder,Right Fig.7 左升降油缸/Lift cylinder,Left	2 级宽视野门架 SIMPLEX MAST					
	序号 Item	物料码 Part No	名称 Description	数量 Qty	备注或适用车型 Remarks or Serial NO	原物料码 Original Part No
	11	209800030052	导向套	1	3t	N30M300-402000-W00
	11	209800030158	导向套	1	3.5t-3.8t	3.5M3H-402000-W00
	12	300130010029	O 形密封圈 51.5×2.65	1	2t-2.5t	G3452P1-51P52P65-00
	12	300130010033	O 形密封圈 56×2.65	1	3t	G3452P1-00562P65-00
	12	300130010034	O 形密封圈 60×2.65	1	3.5t-3.8t	G3452P1-00602P65-00
	13	选配表 3	活塞杆	1		
	14	选配表 3	隔套 Sheath	1		
	15	209800080010	油嘴组件	1	2t-2.5t 右升降油缸	X25M300-403000-W00

	15	209800080009	油嘴组件	1	3t-3.8t 右升降油缸	X30M300-403000-W00
	16	810900000001	O形密封圈 14×2.65	1	2t-2.5t 右升降油缸	G001235-00142P65-00
	16	300130010047	O形密封圈 19×2.65	1	3t-3.8t 右升降油缸	G3452P1-00192P65-00
	K1	820020000005	左右缸修理包	1	INC:5,9,10,12,16	X25M300-4/5-000-kit
	K2	820020000006	左右缸修理包	1	INC:5,9,10,12,16	X30M300-4/5-000-kit
	K3	820020000007	左右缸修理包	1	INC:5,9,10,12,16,	X35M300-4/5-001-kit
	注：序号 1,2,13,组装后为不可拆分整体,用户订购时应订购整个组合件。					

选配表 3-1 <Optional Parts List 3-1> (2t-2.5t)

序号 Item	A1 Lift cylinder, Right	A2 Lift cylinder, Left	8 Cylinder body, R	8 Cylinder body, L	13 Piston rod	14 Sheath
起升高度 Lift Height	物料码 Part No.	物料码 Part No.	物料码 Part No.	物料码 Part No.	物料码 Part No.	物料码 Part No.
2000	209800002192	209800002197	209800011741	209800011746	209800021108	Without part14
2500	209800002193	209800002198	209800011742	209800011747	209800021109	
2700	209800002194	209800002199	209800011743	209800011748	209800021110	
3000	209800002196	209800002238	209800010153	209800010154	209800020341	
3300	209800002195	209800002200	209800011744	209800011749	209800021111	
3500	209800002196	209800002201	209800011745	209800011750	209800021112	
3600	209800002202	209800002212	209800011752	209800011762	209800021113	209800021153
3700	209800002203	209800002213	209800011753	209800011763	209800021114	
4000	209800002204	209800002214	209800011754	209800011764	209800021115	
4300	209800002205	209800002215	209800011755	209800011765	209800021116	

4500	209800002206	209800002216	209800011756	209800011766	209800021117
4700	209800002207	209800002217	209800011757	209800011767	209800021118
4800	209800002208	209800002218	209800011758	209800011768	209800021119
5000	209800002209	209800002219	209800011759	209800011769	209800021120
5500	209800002210	209800002220	209800011760	209800011770	209800021121
6000	209800002211	209800002221	209800011761	209800011771	209800021122

选配表 3-1 <Optional Parts List 3-1> (2t-2.5t)

序号 Item	A1 Lift cylinder,Right	A2 Lift cylinder,Left	8 Cylinder body, R	8 Cylinder body, L	13 Piston rod	14 Sheath
起升高度 Lift Height	原物料码 Original Part No.	原物料码 Original Part No.	原物料码 Original Part No.	原物料码 Original Part No.	原物料码 Original Part No.	原物料码 Original Part No.
2000	X25M200-400000-000	X25M200-500000-000	X25M200-401000-W01	X25M200-501000-W01	N25M200-400001-W00	Without part14
2500	X25M250-400000-000	X25M250-500000-000	X25M250-401000-W01	X25M250-501000-W01	N25M250-400001-W00	
2700	X25M270-400000-000	X25M270-500000-000	X25M270-401000-W01	X25M270-501000-W01	N25M270-400001-W00	
3000	X25M300-400000-001	X25M300-500000-001	X25M300-401000-W01	X25M300-501000-W01	N25M300-400001-W00	
3300	X25M330-400000-000	X25M330-500000-000	X25M330-401000-W01	X25M330-501000-W01	N25M330-400001-W00	
3500	X25M350-400000-000	X25M350-500000-000	X25M350-401000-W01	X25M350-501000-W01	N25M350-400001-W00	
3600	X25M360-400000-000	X25M360-500000-000	X25M360-401000-W01	X25M360-501000-W01	N25M360-400001-W00	N30M360-400002-W00
3700	X25M370-400000-000	X25M370-500000-000	X25M370-401000-W01	X25M370-501000-W01	N25M370-400001-W00	
4000	X25M400-400000-000	X25M400-500000-000	X25M400-401000-W01	X25M400-501000-W01	N25M400-400001-W00	N30M400-400002-W00
4300	X25M430-400000-000	X25M430-500000-000	X25M430-401000-W01	X25M430-501000-W01	N25M430-400001-W00	

4500	X25M450-400000-000	X25M450-500000-000	X25M450-401000-W01	X25M450-501000-W01	N25M450-400001-W00
4700	X25M470-400000-000	X25M470-500000-000	X25M470-401000-W01	X25M470-501000-W01	N25M470-400001-W00
4800	X25M480-400000-000	X25M480-500000-000	X25M480-401000-W01	X25M480-501000-W01	N25M480-400001-W00
5000	X25M500-400000-000	X25M500-500000-000	X25M500-401000-W01	X25M500-501000-W01	N25M500-400001-W00
5500	X25M550-400000-000	X25M550-500000-000	X25M550-401000-W01	X25M550-501000-W01	N25M550-400001-W00
6000	X25M600-400000-000	X25M600-500000-000	X25M600-401000-W01	X25M600-501000-W01	N25M600-400001-W00

选配表 3-2 <Optional Parts List 3-2> (3t)

序号 Item	A1 Lift cylinder,Right	A2 Lift cylinder,Left	8 Cylinder body, R	8 Cylinder body, L	13 Piston rod	14 Sheath
起升高度 Lift Height	物料码 Part No.	物料码 Part No.	物料码 Part No.	物料码 Part No.	物料码 Part No.	物料码 Part No.
2000	209800002097	209800002102	209800011773	209800011778	209800021123	Without part14
2500	209800002098	209800002103	209800011774	209800011779	209800021124	
2700	209800002099	209800002104	209800011775	209800011780	209800021125	
3000	209800000218	209800000220	209800010136	209800010137	209800020318	
3300	209800002100	209800002105	209800011776	209800011781	209800021126	
3500	209800002101	209800002106	209800011777	209800011782	209800021127	
3600	209800002107	209800002117	209800011823	209800011783	209800021128	209800021153
3700	209800002108	209800002118	209800011824	209800011784	209800021129	
4000	209800002109	209800002119	209800011825	209800011785	209800021130	209800021154

4300	209800002110	209800002120	209800011826	209800011786	209800021131	
4500	209800002111	209800002121	209800011827	209800011787	209800021132	
4700	209800002112	209800002122	209800011828	209800011788	209800021133	
4800	209800002113	209800002123	209800011829	209800011789	209800021134	
5000	209800002114	209800002124	209800011830	209800011790	209800021135	
5500	209800002115	209800002125	209800011831	209800011791	209800021136	
6000	209800002116	209800002126	209800011832	209800011792	209800021137	

选配表 3-2 <Optional Parts List 3-2> (3t)

序号 Item	A1 Lift cylinder,Right	A2 Lift cylinder,Left	8 Cylinder body, R	8 Cylinder body, L	13 Piston rod	14 Sheath
起升高度 Lift Height	原物料码 Original Part No.	原物料码 Original Part No.	原物料码 Original Part No.	原物料码 Original Part No.	原物料码 Original Part No.	原物料码 Original Part No.
2000	X30M200-400000-000	X30M200-500000-000	X30M200-401000-W01	X30M200-501000-W01	N30M200-400001-W00	Without part14
2500	X30M250-400000-000	X30M250-500000-000	X30M250-401000-W01	X30M250-501000-W01	N30M250-400001-W00	
2700	X30M270-400000-000	X30M270-500000-000	X30M270-401000-W01	X30M270-501000-W01	N30M270-400001-W00	
3000	X30M300-400000-001	X30M300-500000-001	X30M300-401000-W01	X30M300-501000-W01	N30M300-400001-W00	
3300	X30M330-400000-000	X30M330-500000-000	X30M330-401000-W01	X30M330-501000-W01	N30M330-400001-W00	
3500	X30M350-400000-000	X30M350-500000-000	X30M350-401000-W01	X30M350-501000-W01	N30M350-400001-W00	
3600	X30M360-400000-000	X30M360-500000-000	X30M360-401000-W01	X30M360-501000-W01	N30M360-400001-W00	N30M360-400002-W00
3700	X30M370-400000-000	X30M370-500000-000	X30M370-401000-W01	X30M370-501000-W01	N30M370-400001-W00	

4000	X30M400-400000-000	X30M400-500000-000	X30M400-401000-W01	X30M400-501000-W01	N30M400-400001-W00	N30M400-400002-W00
4300	X30M430-400000-000	X30M430-500000-000	X30M430-401000-W01	X30M430-501000-W01	N30M430-400001-W00	
4500	X30M450-400000-000	X30M450-500000-000	X30M450-401000-W01	X30M450-501000-W01	N30M450-400001-W00	
4700	X30M470-400000-000	X30M470-500000-000	X30M470-401000-W01	X30M470-501000-W01	N30M470-400001-W00	
4800	X30M480-400000-000	X30M480-500000-000	X30M480-401000-W01	X30M480-501000-W01	N30M480-400001-W00	
5000	X30M500-400000-000	X30M500-500000-000	X30M500-401000-W01	X30M500-501000-W01	N30M500-400001-W00	
5500	X30M550-400000-000	X30M550-500000-000	X30M550-401000-W01	X30M550-501000-W01	N30M550-400001-W00	
6000	X30M600-400000-000	X30M600-500000-000	X30M600-401000-W01	X30M600-501000-W01	N30M600-400001-W00	

选配表 3-3 <Optional Parts List 3-3> (3.5t-3.8t)

序号 Item	A1 Lift cylinder,Right	A2 Lift cylinder,Left	8 Cylinder body, R	8 Cylinder body, L	13 Piston rod	14 Sheath
起升高度 Lift Height	物料码 Part No.	物料码 Part No.	物料码 Part No.	物料码 Part No.	物料码 Part No.	物料码 Part No.
2000	209800002003	209800002021	209800011793	209800011808	209800021138	209800090639
2500	209800002004	209800002022	209800011794	209800011809	209800021139	
2700	209800002005	209800002023	209800011795	209800011810	209800021140	
3000	209800000374	209800000375	209800010270	209800010271	209800020284	
3300	209800002006	209800002024	209800011796	209800011811	209800021141	
3500	209800002065	209800002075	209800011797	209800011812	209800021142	

3600	209800002008	209800002026	209800011798	209800011813	209800021143	209800090473
3700	209800002009	209800002027	209800011799	209800011814	209800021144	
4000	209800002010	209800002028	209800011800	209800011815	209800021145	
4300	209800002011	209800002029	209800011801	209800011816	209800021146	
4500	209800002068	209800002078	209800011802	209800011817	209800021147	
4700	209800002013	209800002031	209800011803	209800011818	209800021148	
4800	209800002069	209800002079	209800011804	209800011819	209800021149	
5000	209800002015	209800002033	209800011805	209800011820	209800021150	
5500	209800002016	209800002034	209800011806	209800011821	209800021151	
6000	209800002017	209800002035	209800011807	209800011822	209800021152	

选配表 3-3 <Optional Parts List 3-3> (3.5t-3.8t)

序号 Item	A1 Lift cylinder,Right	A2 Lift cylinder,Left	8 Cylinder body, R	8 Cylinder body, L	13 Piston rod	14 Sheath
起升高度 Lift Height	原物料码 Original Part No.	原物料码 Original Part No.	原物料码 Original Part No.	原物料码 Original Part No.	原物料码 Original Part No.	原物料码 Original Part No.
2000	RTE35M200-400000-000	RTE35M200-500000-000	RTE35M200-401000-W00	RTE35M200-501000-W00	RTE35M200-400001-W00	3.5M3H-400006
2500	RTE35M250-400000-000	RTE35M250-500000-000	RTE35M250-401000-W00	RTE35M250-501000-W00	RTE35M250-400001-W00	
2700	RTE35M270-400000-000	RTE35M270-500000-000	RTE35M270-401000-W00	RTE35M270-501000-W00	RTE35M270-400001-W00	
3000	RTE35M300-400000-000	RTE35M300-500000-000	RTE35M300-401000-W00	RTE35M300-501000-W00	N35M300-400001-W00	
3300	RTE35M330-400000-000	RTE35M330-500000-000	RTE35M330-401000-W00	RTE35M330-501000-W00	RTE35M330-400001-W00	

3500	RTE35M350-400000-000	RTE35M350-500000-000	RTE35M350-401000-W00	RTE35M350-501000-W00	RTE35M350-400001-W00	
3600	RTE35M360-400000-000	RTE35M360-500000-000	RTE35M360-401000-W00	RTE35M360-501000-W00	RTE35M360-400001-W00	
3700	RTE35M370-400000-000	RTE35M370-500000-000	RTE35M370-401000-W00	RTE35M370-501000-W00	RTE35M370-400001-W00	
4000	RTE35M400-400000-000	RTE35M400-500000-000	RTE35M400-401000-W00	RTE35M400-501000-W00	RTE35M400-400001-W00	
4300	RTE35M430-400000-000	RTE35M430-500000-000	RTE35M430-401000-W00	RTE35M430-501000-W00	RTE35M430-400001-W00	A30N800-400002-W00
4500	RTE35M450-400000-000	RTE35M450-500000-000	RTE35M470-401000-W00	RTE35M450-501000-W00	RTE35M450-400001-W00	
4700	RTE35M470-400000-000	RTE35M470-500000-000	RTE35M480-401000-W00	RTE35M470-501000-W00	RTE35M470-400001-W00	
4800	RTE35M480-400000-000	RTE35M480-500000-000	RTE35M450-401000-W00	RTE35M480-501000-W00	RTE35M480-400001-W00	
5000	RTE35M500-400000-000	RTE35M500-500000-000	RTE35M500-401000-W00	RTE35M500-501000-W00	RTE35M500-400001-W00	
5500	RTE35M550-400000-000	RTE35M550-500000-000	RTE35M550-401000-W00	RTE35M550-501000-W00	RTE35M550-400001-W00	
6000	RTE35M600-400000-000	RTE35M600-500000-000	RTE35M600-401000-W00	RTE35M600-501000-W00	RTE35M600-400001-W00	

图 8-1 倾斜油缸 2.0t-3.0t Fig.8-1 Tilt cylinder 2.0t-3.0t	2.0t-3.0t 2 级宽视野门架 2 级全自由门架 3 级全自由门架 SIMPLEX MAST DUPLEX MAST TRIPLEX MAST					
	序号 Item	物料码 Part No	名称 Description	数量 Qty	备注或适用车型 Remarks or Serial NO	原物料码 Original Part No
	A1	209800000472	倾斜油缸	1	SIMPLEX, DUPLEX	R30M300-600000-000
	A2	209800000013	倾斜油缸	1	TRIPLEX, H=4m	R30M430-600000-000
	A2	209800000013	倾斜油缸	1	H≤2m, 4.3m≤H≤5m	R30M430-600000-000

	A3	209800000011	倾斜油缸	1	H≥5.5m	N30N550-600000-003
	1	209800090236	耳环	1		R30M300-600002-000
	2	209800090271	球面轴承	1		N30M300-600002-000
	3	300170040003	油杯 M6	1		G001152-006000-00
	4	300030010003	垫圈 14	1		G000093-000014-00
	5	300020020020	螺母 M14×1.5	1		G006171-000014-02
	6	300010050035	螺栓 M14×1.5×60	1		G005785-014060-01
	7	209800020319	活塞杆	1	A1	N30M300-600003-000
	7	209800020013	活塞杆	1	A2、A3	N30M430-600001-000
	8	200100070018	防尘圈 d30×38×5×6.5	1		d30-G00
	9	209800030054	导向套	1		N30M300-602000-000

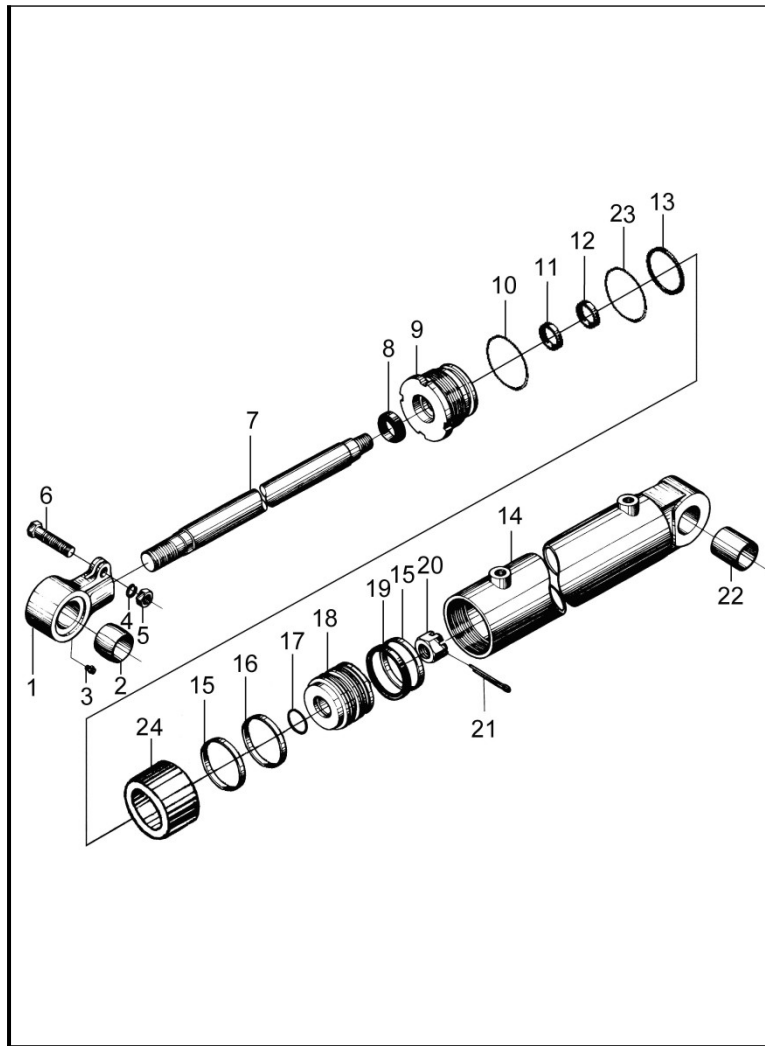
图 8-1 倾斜油缸 2.0t-3.0t Fig.8-1 Tilt cylinder 2.0t-3.0t	2.0t-3.0t 2 级宽视野门架 2 级全自由门架 3 级全自由门架 SIMPLEX MAST DUPLEX MAST TRIPLEX MAST					
	序号 Item	物料码 Part No	名称 Description	数量 Qty	备注或适用车型 Remarks or Serial NO	原物料码 Original Part No
	10	300130010122	O 形密封圈 75×3.1	1		G001235-007503P1-00
	11	209990000170	U 形密封圈 d30	1		RU3000300-Z20-G00

	12	209990000544	斯特封 d30	1		RS1300300-T46NA-G00
	13	300130010087	O 形密封圈 70×5.7	1		G001235-007005P7-00
	14	209800010370	缸体	1		R30M300-601000-000
	15	209990000163	OSI 密封圈 D70	2		FU0846K0-G00
	16	209800090618	挡圈 70×60×2.5	1		3M3H-600009C
	17	300130010143	O 形密封圈 30×3.1	1		G001235-003003P1-00
	18	209800050058	活塞	1		R30M300-600001-000
	19	209800090626	支撑环	1		3M3H-600006C
	20	300020260004	螺母 M24×2	1		G009459-000024-02
	21	300050010057	销 5×45	1		G000091-005045-00
	22	205100040024	复合衬套 3545	1		SF-1-3545-G00
	23	209800090267	保护圈 70×61×2.5	1		N30M300-600006-000
	24	209800080001	隔套	1	A2	N30M430-600002-000

	<p style="text-align: center;">2.0t-3.0t</p> <p style="text-align: center;">2级宽视野门架 2级全自由门架 3级全自由门架</p> <p style="text-align: center;">SIMPLEX MAST DUPLEX MAST TRIPLEX MAST</p>					
	图 8-31 Fig.8-1					
序号 Item	物料码 Part No	名称 Description	数量 Qty	备注或适用车型 Remarks or Serial NO	原物料码 Original Part No	
24	209800080002	隔套	1	A3	N30N550-600001-000	

	B1	209800000814	倾斜油缸	1	2.5≤H≤4m	AX40M300-600000-000
	B2	209800001853	倾斜油缸	1	H≤2m, 4.3≤H≤5m	AX40M430-600000-000
	B3	209800001854	倾斜油缸	1	H≥5.5m	AX40M550-600000-000
	1	209800070005	耳环	1		RC25M300-600001-000
	2	209800090271	球面轴承	1		N30M300-600002-000
	3	300170040003	油杯 M6	1		G001152-006000-00
	4	300030010003	垫圈 14	1		G000093-000014-00
	5	300020020020	螺母 M14×1.5	1		G006171-000014-02
	6	300010050035	螺栓 M14×1.5×60	1		G005785-014060-01
	7	209800020435	活塞杆	1	B1	AX40M300-600001-W00
7	209800021034	活塞杆	1	B2、B3	AX40M430-600001-W00	
8	200100070021	防尘圈 d35×38×5×6.5	1		d35-G00	
9	209800030031	导向套	1		RC25M300-602000-W00	
10	300130010132	O形密封圈 85×3.1	1		G001235-008503P1-00	

图 8-2 倾斜油缸 3.5t-3.8t Fig.8-2 Tilt cylinder 3.5t-3.8t	3.5t-3.8t 2级宽视野门架 2级全自由门架 3级全自由门架 SIMPLEX MAST DUPLEXMAST TRIPLEX MAST
---	--



序号 Item	物料码 Part No	名称 Description	数量 Qty	备注或适用车型 Remarks or Serial NO	原物料码 Original Part No
11	209990000172	U 形密封圈 d35	1		RU3000350-Z20-G00
12	209990000546	斯特封 d35	1		RS1300350-T46NA-G00
13	300130010084	O 形密封圈 80×5.7	1		G001235-008005P7-00
14	209800010368	缸体	1		R35M300-601000-W00
15	209990000164	OSI 密封圈 D80	2		FU0936L0-G00
16	209800090234	挡圈 80×70×2.5	1		R35M300-600001-W00
17	300130010104	O 形密封圈 35×3.1	1		G001235-003503P1-00
18	209800050047	活塞	1		RC25M300-600007-W00
19	209800090235	支撑环 80×75×16	1		R35M300-600003-W00
20	300020260008	螺母 M30×2	1		G009459-000030-02
21	300050010068	销 6.3×55	1		G000091-6P3055-00
22	205100040024	复合衬套 3545	1		SF-1-3545-G00
23	209800090260	保护圈 80×71×2.5	1		N35M300-600001-W00
24	209800090826	隔套	1	B2	AX40M430-600002-W00
24	209800090832	隔套	1	B3	AX40M550-600002-W00

图9 油路系统
Fig.9 Mast piping

2级宽视野门架 SIMPLEX MAST

序号 Item	物料码 Part No	名称 Description	数量 Qty	备注或适用车型 Remarks or Serial NO	原物料码 Original Part No
1	选配表 4	回油管 φ14.5/φ9.5	1		
2	209850090299	镶边	5		N30M300-700002-000
3	209990000574	通用尼龙扎带	5		GT-3001-G00
4	选配表 4	回油管 φ14.5/φ9.5	1		
5	209850090298	三通接头	1		N30M300-700005-000
6	209500270220	螺栓 M8×1.25×16	7		N30M300-003000-000
7	209850080037	管夹	2		S16M300-700003-000
8	201600040026	回油管 φ14.5/φ9.5	1		JGD-095A01560-000
9	209850080058	管夹	1		N30M300-700008-000
10	209990000937	胶管接头 Oil pipe assy	1		JGG-13A00480Z5-000
11	206200110008	限速阀 Speed limiting valve	1	2-2.5t	XSF2-F16L-2T-G00
11	206200110007	限速阀 Speed limiting valve	1	3t-3.8t	XSF2-F16L-3T-G00
12	300290010006	喉箍 16	6		JT08870-0160000000-00
13	209990000806	胶管接头 Oil pipe assy	1		JGG-13A00910Z0-000

选配表 4 <Optional Parts List 4>

序号 Item.	序号 1(2t-3t)	序号 1 (3.5t-3.8t)	序号 4(2t-3t)	序号 4 (3.5t-3.8t)
起升高度 Lift Height	物料码 Part No.	物料码 Part No.	物料码 Part No.	物料码 Part No.
2000	209850040870	209850040818	209850040885	209850040833
2500	209850040871	209850040819	209850040886	209850040834
2700	209850040872	201600040036	209850040887	201600040037
3000	201600040036	201600040049	201600040037	201600040051
3300	201600040049	209850040821	201600040051	209850040836
3500	209850040852	209850040853	209850040862	209850040863
3600	209850040875	201600040041	209850040891	209850040838
3700	209850040853	209850040824	209850040863	209850040839
4000	209850040877	209850040878	209850040892	209850040893
4300	209850040878	209850040826	209850040893	209850040841
4500	209850040879	209850040856	209850040894	209850040866
4700	209850040880	209850040882	209850040895	209850040897
4800	209850040856	209850040857	209850040866	209850040867
5000	209850040882	209850040830	209850040897	209850040845
5500	209850040883	209850040831	209850040898	209850040846
6000	209850040884	209850040832	209850040899	209850040847

选配表 4 <Optional Parts List 4>

序号 Item.	序号 1(2t-3t)	序号 1 (3.5t-3.8t)	序号 4(2t-3t)	序号 4 (3.5t-3.8t)
起升高度 Lift Height	原物料码 Original Part No.	原物料码 Original Part No.	原物料码 Original Part No.	原物料码 Original Part No.
2000	JGD-095A00730-000	JGD-095A00880-000	JGD-095A00220-000	JGD-095A00370-000
2500	JGD-095A00980-000	JGD-095A01130-000	JGD-095A00470-000	JGD-095A00620-000
2700	JGD-095A01080-000	JGD-095A01230-000	JGD-095A00570-000	JGD-095A00720-000
3000	JGD-095A01230-000	JGD-095A01380-000	JGD-095A00720-000	JGD-095A00870-000
3300	JGD-095A01380-000	JGD-095A01530-000	JGD-095A00870-000	JGD-095A01020-000
3500	JGD-095A01480-000	JGD-095A01630-000	JGD-095A00970-000	JGD-095A01120-000
3600	JGD-095A01580-000	JGD-095A01680-000	JGD-095A01070-000	JGD-095A01170-000
3700	JGD-095A01630-000	JGD-095A01730-000	JGD-095A01120-000	JGD-095A01220-000
4000	JGD-095A01830-000	JGD-095A01980-000	JGD-095A01320-000	JGD-095A01470-000
4300	JGD-095A01980-000	JGD-095A02130-000	JGD-095A01470-000	JGD-095A01620-000
4500	JGD-095A02080-000	JGD-095A02230-000	JGD-095A01570-000	JGD-095A01720-000
4700	JGD-095A02180-000	JGD-095A02330-000	JGD-095A01670-000	JGD-095A01820-000
4800	JGD-095A02230-000	JGD-095A02380-000	JGD-095A01720-000	JGD-095A01870-000
5000	JGD-095A02330-000	JGD-095A02480-000	JGD-095A01820-000	JGD-095A01970-000
5500	JGD-095A02580-000	JGD-095A02730-000	JGD-095A02070-000	JGD-095A02220-000
6000	JGD-095A02830-000	JGD-095A02980-000	JGD-095A02320-000	JGD-095A02470-000

图 10 侧移油路
Fig.10 lateral moving circuit

2 级宽视野门架 SIMPLEX MAST

序号 Item	物料码 Part NO	名称 Description	数量 Qty	备注或适用车型 Remarks or Serial NO	原物料码 Original Part No
1	209850090463	滑轮轴	1		AH35B300-900006-000
2	209850020062	滑轮	2		J30B300-900006-001
3	209850050034	垫片 Gasket	1		J25B300-900005-000
4	300030010003	垫圈 14	1		G000093-000014-00
5	209850080048	管夹组件	1	INC : 5-1 ~ 5-7	RTE35B300-920000-000
5-1	300040020097	螺钉 M8×40	1		G000070-008020-00
5-2	206500040044	盖板	1		RT500-650006-000
5-3	310040040143	管夹	1		BT425M390-700005-000
5-4	209850070386	支板	1		RTE35B300-921000-000
5-5	300040020097	螺钉 M8×20	2		G000070-008020-00

	5-6	300030010015	垫圈 8	7		G000093-000008-00
	5-7	209850090193	垫片	1		RTE35V450-820001-000
	6	See OP. Parts 5	胶管接头	2		
	7	See OP. Parts 5	钢油管	1		
	8	209850060338	90°管接头 90°Elbow	2		AH35B300-904000-000

图 10 侧移油路
Fig.10 lateral moving circuit

2级宽视野门架 SIMPLEX MAST

序号 Item	物料码 Part NO	名称 Description	数量 Qty	备注或适用车型 Remarks or Serial NO	原物料码 Original Part No
9	209990000918	胶管接头	1		JGG-10B00430A0-000
10	209850060605	胶管接头	1		JGG-10B00730Z0-000
11	209850060605	胶管接头	1		JGG-10B00730Z0-000
12	300040020098	螺钉 M8×25	2		G000070-008025-00
13	300130010089	O形密封圈 22×2.4	2		G001235-002202P4-00
14	209850060343	直通接头	1		A30N800-900006-000
15	209850060342	直通接头	1		A30N800-900005-000
16	209850020033	接头支座	1		RTE35B300-911000-000
17	209850090206	垫片	1		RTE35B300-910001-000

侧移油缸
(Side shift cylinder)

	18	209990000919	胶管接头	1		JGG-10B00300A0-000
	19	See OP. Parts 5	抱箍组件	1	2t-3t	
	19	See OP. Parts 5	抱箍组件	1	3.5t-3.8t	
	20	300040020096	螺钉 M8×16	2		G000070-008016-00

选配表 5 <Optional Parts List 5>

序号 Item	5	6	7	19
起升高度 Lift Height	物料码 Part NO.	物料码 Part NO.	物料码 Part NO.	物料码 Part NO
2000	Without this part	209850060908	209850071477	Without this part
2500		209850060909		
2700	209850080048	209850060910	209850070364	204201000191 (2t-3t) 209850080047 (3.5t-3.8t)
3000		209850060606		
3300		209990000911		
3500		209850060852		
3600		209850060913		
3700		209850060914		
4000		209850060855		
4300		209850060916		
4500		209850060856		
4700		209850060918		

4800		209850060919		
5000		209850060920		
5500		209850060921		
6000		209850060922		

选配表 5 <Optional Parts List 5>

序号 Item	5	6	7	19
起升高度 Lift Height	原物料码 Original Part No.	原物料码 Original Part No.	原物料码 Original Part No.	原物料码 Original Part No.
2000	Without this part	JGG-10B01580A0-000	RTE35B200-940000-000	Without this part
2500		JGG-10B02070A0-000		
2700	RTE35B300-920000-000	JGG-10B02350A0-000	RTE35V450-930000-000	RTE25B300-901000-000 (2t-3t) RTE35B300-901000-000 (3.5t-3.8t)
3000		JGG-10B02650A0-000		
3300		JGG-10B02950A0-000		
3500		JGG-10B03140A0-000		
3600		JGG-10B03340A0-000		
3700		JGG-10B03440A0-000		
4000		JGG-10B03830A0-000		
4300		JGG-10B04130A0-000		
4500		JGG-10B04320A0-000		

4700		JGG-10B04520A0-000		
4800		JGG-10B04620A0-000		
5000		JGG-10B04820A0-000		
5500		JGG-10B05310A0-000		
6000		JGG-10B05800A0-000		

图 11 第四联油路 Fig.11 Fourth oil		2 级宽视野门架 SIMPLEX MAST				
序号 Item	物料码 Part NO	名称 Description	数量 Qty	备注或适用车型 Remarks or Serial NO	原物料码 Original Part No	
1	209850090330	滑轮轴	1		J25B300-900007-000	
2	209850090329	滑轮	2		J25B300-900006-001	
3	209850050034	垫片 Gasket	1		J25B300-900005-000	
4	300030010003	垫圈 14	1		G000093-000014-00	
5	209850080048	管夹组件	1	INC : 5-1 ~ 5-7	RTE35B300-920000-000	
5-1	300040020097	螺钉 M8×40	1		G000070-008020-00	

	5-2	206500040044	盖板	1		RT500-650006-000
	5-3	310040040143	管夹	1		BT425M390-700005-000
	5-4	209850070386	支板	1		RTE35B300-921000-000
	5-5	300040020097	螺钉 M8×20	2		G000070-008020-00
	5-6	300030010015	垫圈 8	7		G000093-000008-00
	5-7	209850090193	垫片	1		RTE35V450-820001-000
	6	See OP. Parts 6	胶管接头	2		
	7	See OP. Parts 6	钢油管	1		
	8	300040020096	螺钉 M8×16	2		G000070-008016-00

图 11 第四联油路 Fig.11 Fourth oil	2 级宽视野门架 SIMPLEX MAST					
	序号 Item	物料码 Part NO	名称 Description	数量 Qty	备注或适用车型 Remarks or Serial NO	原物料码 Original Part No
	9	209850090453	闷盖	2		AH35W450-805000-000
	10	300040020098	螺钉 M8×25	2		G000070-008025-00
	11	209850020034	接头支座	1		RTE35B300-811000-000
	12	209850090206	垫片	1		RTE35B300-910001-000
	13	300130010089	O 形密封圈 22×2.4	2		G001235-002202P4-00

	14	209850060343	直通接头	1		A30N800-900006-000
	15	209850060615	胶管接头	1		JGG-08B01000Z0-000
	16	209850060614	胶管接头	1		JGG-08B01070Z0-000
	17	209850060342	直通接头	1		A30N800-900005-000
	18	See OP. Parts 6	抱箍组件	1	2t-3t	
	18	See OP. Parts 6	抱箍组件	1	3.5t-3.8t	

选配表 6<Optional Parts List 6>

序号 Item	5	6	7	18
起升高度 Lift Height	物料码 Part NO.	物料码 Part NO.	物料码 Part NO.	物料码 Part NO
2000	Without this part	209850060908	209850071477	Without this part
2500		209850060909		
2700	209850080048	209850060910	209850070365	204201000191 (2t-3t) 209850080047 (3.5t-3.8t)
3000		209850060606		
3300		209990000911		
3500		209850060852		

3600		209850060913		
3700		209850060914		
4000		209850060855		
4300		209850060916		
4500		209850060856		
4700		209850060918		
4800		209850060919		
5000		209850060920		
5500		209850060921		
6000		209850060922		

选配表 6<Optional Parts List 6>

序号 Item	5	6	7	18
起升高度 Lift Height	原物料码 Original Part No.	原物料码 Original Part No.	原物料码 Original Part No.	原物料码 Original Part No.
2000	Without this part	JGG-10B01580A0-000	RTE35B200-940000-000	Without this part
2500		JGG-10B02070A0-000		
2700	RTE35B300-920000-000	JGG-10B02350A0-000	RTE35V450-830000-000	RTE25B300-901000-000 (2t-3t) RTE35B300-901000-000 (3.5t-4t)
3000		JGG-10B02650A0-000		
3300		JGG-10B02950A0-000		

3500		JGG-10B03140A0-000		3.8t)
3600		JGG-10B03340A0-000		
3700		JGG-10B03440A0-000		
4000		JGG-10B03830A0-000		
4300		JGG-10B04130A0-000		
4500		JGG-10B04320A0-000		
4700		JGG-10B04520A0-000		
4800		JGG-10B04620A0-000		
5000		JGG-10B04820A0-000		
5500		JGG-10B05310A0-000		
6000		JGG-10B05800A0-000		

图 12 起升组件 Fig.12 Lifting part		2 级全自由门架 DUPLEX MAST					
	序号 Item	物料码 Part No	名称 Description	数量 Qty	备注或适用车型 Remarks or Serial NO	原物料码 Original Part No	
	1	选配表 7	外门架	1			
	2	选配表 7	内门架	1			

	3	209500270061	螺栓组件	2		XR30U300-002000-000
	4	209500270228	油缸调整垫圈	2		N30M300-000012-000
	5	209750010071	挡货架	1	2t -2.5t	N25M300-020000-000
	5	209750010008	挡货架	1	3t-3.8t	N30M300-020000-002
	6	209500210024	销轴	2		N30N450-001000-000
	7	300170040002	油杯 M10×1	4		G001152-010001-00
	8	209500270217	螺栓 M10×1.25×20	4		N30M300-004000-000
	9	见图 16	左升降油缸	1	对称位置 Position symmetry	
	10	见图 16	右升降油缸	1		
	11	见图 IV	货叉总成	1		
	12	见图 14	货叉架总成	1		
	12	见图 15	侧移架总成	1		
	13	209500270062	螺钉组件	3		XR30M300-003000-000

图 12 起升组件 Fig.12 Lifting part	2 级全自由门架 DUPLEX MAST					
	序号 Item	物料码 Part No	名称 Description	数量 Qty	备注或适用车型 Remarks or Serial NO	原物料码 Original Part No
	14	209500270218	螺栓 M14×1.5×35	8		N30M300-006000-000

	15	见图 17	短升降油缸	1		
	16	见图 VI	链条座	1		
	17	见图 13	链条总成	2		
	18	209500270143	链轮护板	1		RTE35N450-004000-000
	19	见图 V	油缸抱箍	2		
	20	见图 18	油路系统	1		
	21	209500160014	油缸抱箍	1	2.0t-2.5t	RTE25N450-002000-000
	21	209500160004	油缸抱箍	1	3t	XR30N450-002000-000
	21	209500160013	油缸抱箍	1	3.5t-3.8t	RTE35N450-002000-000
	21-1	300030010002	垫圈 12	2		G000093-000012-00
	21-2	300010040030	螺栓 M12×20	2		G005783-012020-00
	21-3	300030040003	垫圈 12	2		G0097P1-000012-00
	21-4	209550010252	油缸固定板 Cylinder	1	2t-2.5t	RC25N450-000001-000
	21-4	209550010242	油缸固定板 Cylinder	1	3t	RC30N450-000001-000

图 12 起升组件 Fig.12 Lifting part	2 级全自由门架 DUPLEX MAST					
	序号 Item	物料码 Part No	名称 Description	数量 Qty	备注或适用车型 Remarks or Serial NO	原物料码 Original Part No

	21-4	209550010078	油缸固定板 Cylinder	1	3.5t-3.8t	X35N450-000001-000
	22	209500270063	螺钉组件	1		XR30M300-004000-000
	23	209500270224	调整垫片	2		N30M300-000015-000
	24	209500270211	导轨衬垫	2		N30M300-000014-000
	25	209500210028	销轴	2		N30M300-001000-000
	26	见图 8-1 See Fig.8-1	倾斜油缸	2	2t-3t	
	26	见图 8-2 See Fig.8-2	倾斜油缸	2	3.5t-3.8t	
	27	209500020002	复合滚轮组 Complex rolle assy	4	图 I Fig.I	XR30M300-007000-000

选配表 7<Optional Parts List 7>

序号 Item	1 (2t-2.5t)	1 (3t)	1 (3.5t-3.8t)	2 (2t-2.5t)	2 (3t)	2 (3.5t-3.8t)
------------	-------------	--------	---------------	-------------	--------	---------------

起升高度 Lift Height	物料码 Part No.	物料码 Part No.	物料码 Part No.	物料码 Part No.	物料码 Part No.	物料码 Part No.
2000	209550000539	209550000521	209550000488	209650000514	209650000496	209650000463
2500	209550000540	209550000522	209550000489	209650000515	209650000497	209650000464
2700	209550000541	209550000523	209550000490	209650000516	209650000498	209650000465
3000	209550000453	209550010030	209550000455	209650000427	209650010029	209650000429
3300	209550000542	209550000524	209550000491	209650000517	209650000499	209650000466
3500	209550000543	209550000525	209550000492	209650000518	209650000500	209650000467
3600	209550000544	209550000526	209550000493	209650000519	209650000501	209650000468
3700	209550000545	209550000527	209550000494	209650000520	209650000502	209650000469
4000	209550000546	209550000528	209550000495	209650000521	209650000503	209650000470

选配表 7<Optional Parts List 7>

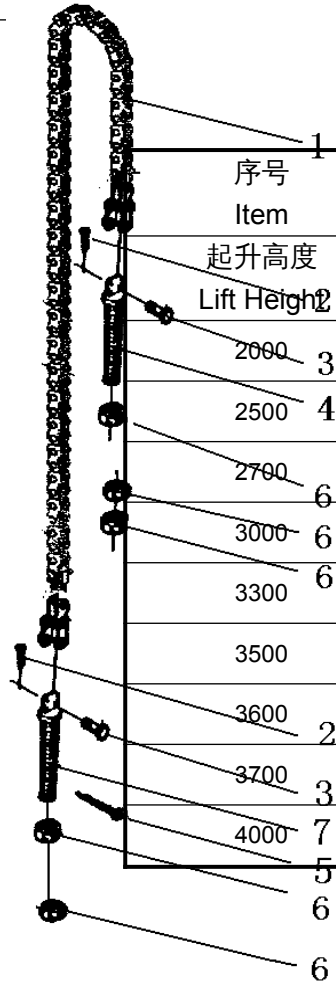
序号 Item	1 (2t-2.5t)	1 (3t)	1 (3.5t-3.8t)	2 (2t-2.5t)	2 (3t)	2 (3.5t-3.8t)
起升高度 Lift Height	原物料码 Original Part No.	原物料码 Original Part No.	原物料码 Original Part No.	原物料码 Original Part No.	原物料码 Original Part No.	原物料码 Original Part No.
2000	XR25U200-100000-000	XR30U200-100000-000	XR35U200-100000-000	XR25U200-200000-000	XR30U200-200000-000	XR35U200-200000-000
2500	XR25U250-100000-000	XR30U250-100000-000	XR35U250-100000-000	XR25U250-200000-000	XR30U250-200000-000	XR35U250-200000-000
2700	XR25U270-100000-000	XR30U270-100000-000	XR35U270-100000-000	XR25U270-200000-000	XR30U270-200000-000	XR35U270-200000-000
3000	XR25U300-100000-000	XR30U300-100000-000	XR35U300-100000-000	XR25U300-200000-000	XR30U300-200000-000	XR35U300-200000-000
3300	XR25U330-100000-000	XR30U330-100000-000	XR35U330-100000-000	XR25U330-200000-000	XR30U330-200000-000	XR35U330-200000-000
3500	XR25U350-100000-000	XR30U350-100000-000	XR35U350-100000-000	XR25U350-200000-000	XR30U350-200000-000	XR35U350-200000-000
3600	XR25U360-100000-000	XR30U360-100000-000	XR35U360-100000-000	XR25U360-200000-000	XR30U360-200000-000	XR35U360-200000-000
3700	XR25U370-100000-000	XR30U370-100000-000	XR35U370-100000-000	XR25U370-200000-000	XR30U370-200000-000	XR35U370-200000-000
4000	XR25U400-100000-000	XR30U400-100000-000	XR35U400-100000-000	XR25U400-200000-000	XR30U400-200000-000	XR35U400-200000-000

图 13 链条总成
Fig.13 Chain assy

2 级全自由门架 DUPLEX MAST

序号 Item	物料码 Part No	名称 Description	数量 Qty	备注或适用车型 Remarks or Serial NO	原物料码 Original Part No
A	选配表 8	链条总成	1		
1	NO PART NO.	板式链 LH1623×N	1	2.0t-3.0t	
1	NO PART NO.	板式链 LH1634×N	1	3.5t-3.8t	
2	300050010038	销 3×20	1	2.0t-3.0t	G000091-003020-00
2	300050010027	销 3.2×20	2	3.5t-3.8t	G000091-3P2020-00
3	NO PART NO.	销轴	2	2.0t-3.0t	
3	NO PART NO.	销轴	2	3.5t-3.8t	
4	NO PART NO.	链条接头	2	2.0t-3.0t	
4	NO PART NO.	链条接头	1	3.5t-3.8t	
5	300050010013	销 2.5×28	1		G000091-2P5028-00
6	300020020009	螺母 M20×1.5	5		G006171-000020-02
7	NO PART NO.	链条接头	1	2.0t-3.0t	
7	NO PART NO.	链条接头	1	3.5t-3.8t	

选配表 8<Optional Parts List 8>



序号 Item	A(2t-2.5t)	A(3t)	A(3.5t-3.8t)
起升高度 Lift Height	物料码 Part No.	物料码 Part No.	物料码 Part No.
2000 3	209500190124	209500190124	209500190162
2500 4	209500190049	209500190049	209500190049
2700 6	209500190063	209500190063	209500190112
3000 6	209500190057	209500190057	209500190076
3300 6	209500190023	209500190197	209500190166
3500	209500190033	209500190199	209500190965
3600 2	209500190199	209500190051	209500190056
3700 3	209500190051	209500190047	209500190064
4000 7	209500190053	209500190994	209500190994
5			
6			
6			

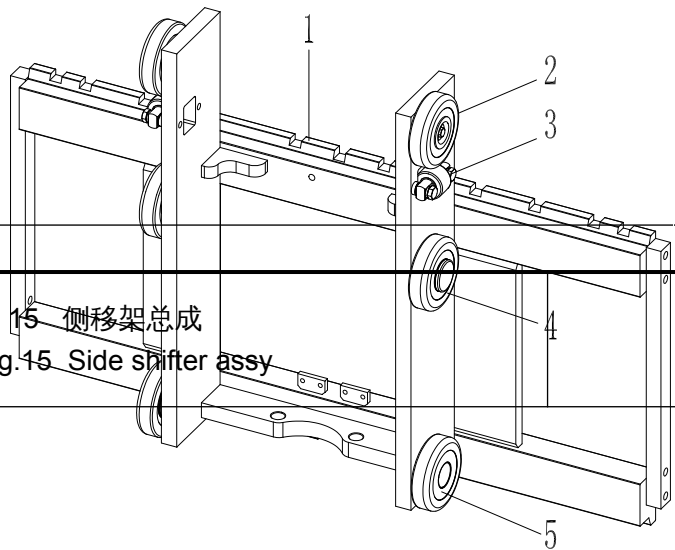
选配表 8<Optional Parts List 8>

序号 Item	A(2t-2.5t)	A(3t)	A(3.5t-3.8t)
起升高度 Lift Height	原物料码 Original Part No.	原物料码 Original Part No.	原物料码 Original Part No.
2000	LH-1623047-100	LH-1623047-100	LH-1634047-100
2500	LH-1623053-100	LH-1623053-100	LH-1623053-100
2700	LH-1623057-100	LH-1623057-100	LH-1634057-100
3000	LH-1623063-100	LH-1623063-100	LH-1634063-100
3300	LH-1623067-100	LH-1623069-100	LH-1634069-100
3500	LH-1623071-100	LH-1623073-100	LH-1634073-100
3600	LH-1623073-100	LH-1623075-100	LH-1634075-100
3700	LH-1623075-100	LH-1623077-100	LH-1634077-100
4000	LH-1623081-100	LH-1623083-100	LH-1623083-100

图 14 货叉架总成
Fig.14 Fork shelf assy

2 级全自由门架 DUPLEX MAST

序号 Item	物料码 Part No	名称 Description	数量 Qty	备注或适用车型 Remarks or Serial NO	原物料码 Original Part No
A1	209700001158	货叉架总成	1	2t~2.5t	XR25U300-300000-000
A2	209700000062	货叉架总成	1	3t	XR30U300-300000-000
A3	209700001159	货叉架总成	1	3.5t-3.8t	XR35U300-300000-000
1	209700001127	货叉架	1	2t~2.5t	XR25U300-301000-000
1	209700010040	货叉架	1	3t	XR30U300-301000-000
1	209700001128	货叉架	1	3.5t-3.8t	XR35U300-301000-000
2	209500020001	纵向滚轮组	2	图 II Fig.II	XR30M300-303000-000
3	209500070002	侧滚轮组	2	图 III Fig.III	XR30M300-302000-000

	4	209500050001	复合滚轮组 Complex rolle assv	2	图 I Fig.I	XR30M300-304000-000	
	5	209500020003	复合滚轮组 Complex rolle assv	2	图 I Fig.I	XR30M300-305000-000	

 <p>图 15 侧移架总成 Fig.15 Side shifter assy</p>	2级全自由门架 DUPLEX MAST					
	序号 Item	物料码 Part No	名称 Description	数量 Qty	备注或适用车型 Remarks or Serial NO	原物料码 Original Part No
	A1	209700001073	侧移架总成	1	2t-2.5t	XR25C300-300000-000
	A2	209700001072	侧移架总成	1	3t	XR30C300-300000-000
	A3	209700001074	侧移架总成	1	3.5t-3.8t	XR35C300-300000-000
	1	209700011198	叉架体	1	2t-2.5t	XR25C300-301000-000
	1	209700011196	叉架体	1	3t	XR30C300-301000-000
	1	209700011200	叉架体	1	3.5t-3.8t	XR35C300-301000-000
	2	209500070002	侧滚轮组	2	图 III Fig.III	XR30M300-302000-000

	3	209500020001	纵向滚轮组	2	图 II Fig.II	XR30M300-303000-000
	4	209500050001	复合滚轮组 Complex rolle assv	2	图 I Fig.I	XR30M300-304000-000
	5	209800000293	侧移油缸	1	见图6 See Fig.6	S16V450-303000-000
	6	209700090045	侧移货叉架	1	2t-2.5t	J25V450-302000-000
	6	209700090052	侧移货叉架	1	3t-3.8t	AH35W450-302000-000
	7	300170040003	油杯 M6	5		G001152-006000-00
	8	209700130048	塞铁	3		S16V450-300001-000
	9	209700150003	挡块	2		1.4QS1-000006

	2级全自由门架 DUPLEX MAST						
	图 15 侧移架总成 Fig.15 Side shifter assy						
	序号 Item	物料码 Part No	名称 Description	数量 Qty	备注或适用车型 Remarks or Serial NO	原物料码 Original Part No	
	10	209700130053	轴	2		S16V450-300005-001	
	11	300050010032	销3.2×30	1		G000091-3P2030-00	
	12	209700080091	挂钩板	2		S16V450-300006-000	
	13	300010060076	螺栓 M16×1.5×50	4		G005786-016050-01	
	14	300030010004	垫圈 16	4		G000093-000016-00	
15	300040180016	螺钉 M8×16	4		G000068-008016-00		

	16	209700130051	下滑块	2		S16V450-300002-000
	17	209700130049	调整垫	2		S16V450-300008-000
	18	209700130050	调整垫	3		S16V450-300009-000
	19	209500020003	纵向滚轮组	2	图 I Fig.I	XR30M300-305000-000

图 16 右升降油缸/Lift cylinder,Right Fig.16 左升降油缸/Lift cylinder,Left	2 级全自由门架 DUPLEXMAST					
	序号 Item	物料码 Part No	名称 Description	数量 Qty	备注或适用车型 Remarks or Serial NO	原物料码 Original Part No
A1	选配表 9	右升降油缸	1			
A2	选配表 9	左升降油缸	1			
1	209990000124	LBH 防尘圈 d35	1	2t-2.5t	CL0066C1-G00	
1	209990000125	LBH 防尘圈 d40	1	3t	CL0077C2-G00	
1	209990000126	LBH 防尘圈 d45	1	3.5t-3.8t	CL0085C0-G00	

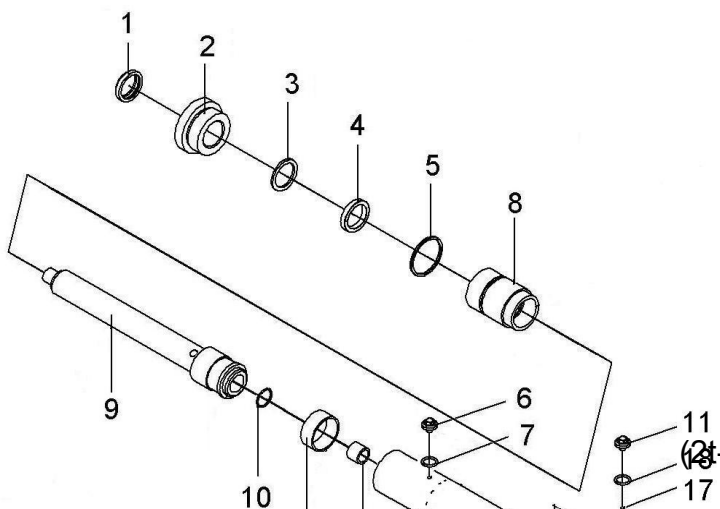
	2	209800040017	缸盖	1	2t-2.5t	RC25U300-400001-W01
	2	209800040014	缸盖	1	3t	RC30U300-400001-W00
	2	209800030013	缸盖	1	3.5t-3.8t	X35U300-400002-W00
	3	209800090658	挡片	1	2t-2.5t	2.5U3H-400001A
	3	209800090177	挡片	1	3t	RC30U300-400006-W00
	3	209800090098	挡片	1	3.5t-3.8t	X35U300-400006-W00
	4	204100070388	ISI 密封圈 d35	1	2t-2.5t	FU0424K0-G00
	4	204100070389	ISI 密封圈 d40	1	3t	FU0497K0-G00
	4	204100070390	SI 密封圈 d45	1	3.5t-3.8t	FU0567K0-G00
	5	300130010128	O 型密封圈 50×3.1	1	2t-2.5t	G001235-005003P1-00

	<p>图 16 右升降油缸/Lift cylinder, Right Fig.16 左升降油缸/Lift cylinder, Left</p> <p style="text-align: center;">2 级全自由门架 DUPLEXMAST</p>					
	序号 Item	物料码 Part No	名称 Description	数量 Qty	备注或适用车型 Remarks or Serial NO	原物料码 Original Part No
	5	300130010118	O 型密封圈 56×3.5	1	3t	G001235-005603P5-00
	5	300130010151	O 型密封圈 60×3.5	1	3.5t-3.8t	G001235-006003P5-00
	6	209800090007	放气螺塞	1		2.5CDJ-32-00-07
7	300130010115	O 型密封圈 16×2.4	1		G001235-001602P4-00	

	8	205100040024	复合衬套	1	2t-2.5t	SF-1-3545-G00
	8	209800030029	导套	1	3t	RC30U300-400002-W01
	8	209800030014	导套	1	3.5t-3.8t	X35U300-400002-W01
	9	选配表 9	右柱塞杆总成	1		
	9	选配表 9	左柱塞杆总成	1		
	10	300060050002	挡圈 24	1		G0895P1-000024-00
	11	209800090179	堵塞	1		RC30U300-400007-W00
	12	209800090661	支承环	1		2.5U3H-400004
	13	209800090186	阀套	1	2t-2.5t	RC25U300-400004-W00
	13	209800090280	阀套	1	3t-3.8t	N25M300-400005-W00
	14	选配表 9	缸体	1		

图 16 右升降油缸/Lift cylinder,Right Fig.16 左升降油缸/Lift cylinder,Left	2 级全自由门架 DUPLEXMAST					
	序号 Item	物料码 Part No	名称 Description	数量 Qty	备注或适用车型 Remarks or Serial NO	原物料码 Original Part No
	15	209800090185	安全阀组件	1	右升降油缸	RC25U300-403000-W00
	16	810900000001	O 形密封圈 14×2.65	1	右升降油缸	G001235-00142P65-00
	17	209800090180	钢球 Sφ5	1		RC30U300-400008-W00

18	300030140012	垫圈 8	1		J000982-000008-00
K1	820020000013	左右缸修理包	1	INC:1,4,5,7,16	RC25U300-4/5-000-Kit
K2	820020000014	左右缸修理包	1	INC:1,4,5,7,16	RC30U300-4/5-000-Kit
K3	820020000015	左右缸修理包	1	INC:1,4,5,7,16	X35U300-4/5-000-Kit



(2t-2.5t) 选配表 9-1 <Optional Parts List 9-1>

序号 Item	12	13	A1	A2	9,右柱塞杆 Pole stopper rod , R	9,左柱塞杆 Pole stopper rod , L	14
起升高度 Lift Height	物料码 Part No.			物料码 Part No.	物料码 Part No.	物料码 Part No.	物料码 Part No.
2000	209800002176 ¹⁵			209800002184	209800021247	209800021255	209800011936
2500	209800002177			209800002185	209800021248	209800021256	209800011937

2700	209800002178	209800002186	209800021249	209800021257	209800011938
3000	209800000404	209800000405	209800050044	209800050045	209800010300
3300	209800002179	209800002187	209800021581	209800021576	209800012432
3500	209800002180	209800002188	209800021582	209800021577	209800012433
3600	209800002181	209800002189	209800021583	209800021578	209800012434
3700	209800002182	209800002190	209800021584	209800021579	209800012435
4000	209800002183	209800002191	209800021585	209800021580	209800012436

(2t-2.5t) 选配表 9-1 <Optional Parts List 9-1>

序号 Item	A1	A2	9,右柱塞杆 Pole stopper rod , R	9,左柱塞杆 Pole stopper rod , L	14
起升高度 Lift Height	原物料码 Original Part No.	原物料码 Original Part No.	原物料码 Original Part No.	原物料码 Original Part No.	原物料码 Original Part No.
2000	AH25G200-400000-000	AH25G200-500000-000	AH25G200-402000-W00	AH25G200-502000-W00	AH25G200-401000-W00

2500	AH25G250-400000-000	AH25G250-500000-000	AH25G250-402000-W00	AH25G250-502000-W00	AH25G250-401000-W00
2700	AH25G270-400000-000	AH25G270-500000-000	AH25G270-402000-W00	AH25G270-502000-W00	AH25G270-401000-W00
3000	RC25U300-400000-000	RC25U300-500000-000	RC25U300-402000-W01	RC25U300-502000-W01	RC25U300-401000-W01
3300	RC25U330-400000-000	RC25U330-500000-000	RC25U330-402000-W01	RC25U330-502000-W01	RC25U330-401000-W01
3500	RC25U350-400000-000	RC25U350-500000-000	RC25U350-402000-W01	RC25U350-502000-W01	RC25U350-401000-W01
3600	RC25U360-400000-000	RC25U360-500000-000	RC25U360-402000-W01	RC25U360-502000-W01	RC25U360-401000-W01
3700	RC25U370-400000-000	RC25U370-500000-000	RC25U370-402000-W01	RC25U370-502000-W01	RC25U370-401000-W01
4000	RC25U400-400000-000	RC25U400-500000-000	RC25U400-402000-W01	RC25U400-502000-W01	RC25U400-401000-W01

(3t) 选配表 9-2 <Optional Parts List 9-2>

序号 Item	A1	A2	9,右柱塞杆 Pole stopper rod , R	9,左柱塞杆 Pole stopper rod , L	14
起升高度 Lift Height	物料码 Part No.	物料码 Part No.	物料码 Part No.	物料码 Part No.	物料码 Part No.
2000	209800002135	209800002143	209800021203	209800021211	209800011890

2500	209800002136	209800002144	209800021204	209800021212	209800011891
2700	209800002137	209800002145	209800021205	209800021213	209800011892
3000	209800000392	209800000393	209800050038	209800050039	209800010288
3300	209800002138	209800002146	209800021206	209800021214	209800011893
3500	209800002139	209800002147	209800021207	209800021215	209800011894
3600	209800002140	209800002148	209800021208	209800021216	209800011895
3700	209800002141	209800002149	209800021209	209800021217	209800011896
4000	209800002142	209800002150	209800021210	209800021218	209800011897

(3t) 选配表 9-2 <Optional Parts List 9-2>

序号 Item	A1	A2	9,右柱塞杆 Pole stopper rod , R	9,左柱塞杆 Pole stopper rod , L	14
起升高度 Lift Height	原物料码 Original Part No.	原物料码 Original Part No.	原物料码 Original Part No.	原物料码 Original Part No.	原物料码 Original Part No.

2000	AH35G200-400000-000	AH35G200-500000-000	AH35G200-402000-W01	AH35G200-502000-W01	AH35G200-401000-W01
2500	AH35G250-400000-000	AH35G250-500000-000	AH35G250-402000-W01	AH35G250-502000-W01	AH35G250-401000-W01
2700	AH35G270-400000-000	AH35G270-500000-000	AH35G270-402000-W01	AH35G270-502000-W01	AH35G270-401000-W01
3000	RC30U300-400000-000	RC30U300-500000-000	RC30U300-402000-W01	RC30U300-502000-W01	RC30U300-401000-W01
3300	RC30U330-400000-000	RC30U330-500000-000	RC30U330-402000-W01	RC30U330-502000-W01	RC30U330-401000-W01
3500	RC30U350-400000-000	RC30U350-500000-000	RC30U350-402000-W01	RC30U350-502000-W01	RC30U350-401000-W01
3600	RC30U360-400000-000	RC30U360-500000-000	RC30U360-402000-W01	RC30U360-502000-W01	RC30U360-401000-W01
3700	RC30U370-400000-000	RC30U370-500000-000	RC30U370-402000-W01	RC30U370-502000-W01	RC30U370-401000-W01
4000	AH35G400-400000-000	AH35G400-500000-000	AH35G400-402000-W01	AH35G400-502000-W01	AH35G400-401000-W01

(3.5t-3.8t) 选配表 9-3<Optional Parts List 9-3>

序号 Item	A1	A2	9,右柱塞杆 Pole stopper rod , R	9,左柱塞杆 Pole stopper rod , L	14
------------	----	----	--------------------------------	--------------------------------	----

起升高度 Lift Height	物料码 Part No.	物料码 Part No.	物料码 Part No.	物料码 Part No.	物料码 Part No.
2000	209800002036	209800002044	209800021169	209800021177	209800011854
2500	209800002037	209800002045	209800021170	209800021178	209800011855
2700	209800002038	209800002046	209800021171	209800021179	209800011856
3000	209800000177	209800000178	209800050009	209800050010	209800010104
3300	209800002039	209800002047	209800021172	209800021180	209800011857
3500	209800002040	209800002048	209800021173	209800021181	209800011858
3600	209800002041	209800002049	209800021174	209800021182	209800011859
3700	209800002042	209800002050	209800021175	209800021183	209800011860
4000	209800002043	209800002051	209800021176	209800021184	209800011861

(3.5t-3.8t) 选配表 9-3<Optional Parts List 9-3>

序号 Item	A1	A2	9,右柱塞杆 Pole stopper rod , R	9,左柱塞杆 Pole stopper rod , L	14
起升高度 Lift Height	原物料码 Original Part No.	原物料码 Original Part No.	原物料码 Original Part No.	原物料码 Original Part No.	原物料码 Original Part No.
2000	XR35U200-400000-000	XR35U200-500000-000	XR35U200-402000-W00	XR35U200-502000-W00	XR35U200-401000-W00
2500	XR35U250-400000-000	XR35U250-500000-000	XR35U250-402000-W00	XR35U250-502000-W00	XR35U250-401000-W00
2700	XR35U270-400000-000	XR35U270-500000-000	XR35U270-402000-W00	XR35U270-502000-W00	XR35U270-401000-W00
3000	X35U300-400000-000	X35U300-500000-000	X35U300-402000-W01	X35U300-502000-W01	X35U300-401000-W01
3300	XR35U330-400000-000	XR35U330-500000-000	XR35U330-402000-W00	XR35U330-502000-W00	XR35U330-401000-W00
3500	XR35U350-400000-000	XR35U350-500000-000	XR35U350-402000-W00	XR35U350-502000-W00	XR35U350-401000-W00
3600	XR35U360-400000-000	XR35U360-500000-000	XR35U360-402000-W00	XR35U360-502000-W00	XR35U360-401000-W00
3700	XR35U370-400000-000	XR35U370-500000-000	XR35U370-402000-W00	XR35U370-502000-W00	XR35U370-401000-W00
4000	XR35U400-400000-000	XR35U400-500000-000	XR35U400-402000-W00	XR35U400-502000-W00	XR35U400-401000-W00

图 17 短升降油缸
Fig.17 Lift cylinder, Short

2 级全自由门架 DUPLEXMAST

序号 Item	物料码 Part No	名称 Description	数量 Qty	备注或适用车型 Remarks or Serial NO	原物料码 Original Part No
A1	选配表 10	短升降油缸	1	2t-2.5t	
A2	选配表 10	短升降油缸	1	3t	
A3	选配表 10	短升降油缸	1	3.5t-3.8t	
1	209800090188	安全阀	1	2t-2.5t	RC25N450-802000-W00
1	209800080020	安全阀	1	3t-3.8t	RC30N450-802000-W00
2	选配表 10	缸体	1	2t-2.5t	
2	选配表 10	缸体	1	3t	
2	选配表 10	缸体	1	3.5t-3.8t	
3	300060010023	挡圈 28	1		G0893P1-000028-00
4	209800090191	单向阀	1		RC25N450-803000-W00

	5	300130010090	O形密封圈 26×2.4	1		G001235-002602P4-00
	6	209800090187	WR抗磨环 75×70×20	1	2t-2.5t	RC25N450-800002-G00
	6	209800090181	WR抗磨环 85×79×25	1	3t	RC30N450-800002-G00
	6	209800090099	WR抗磨环 95×89×25	1	3.5t-3.8t	X35N450-800009-G00
	7	300030140011	垫圈 6	1		J000982-000006-00

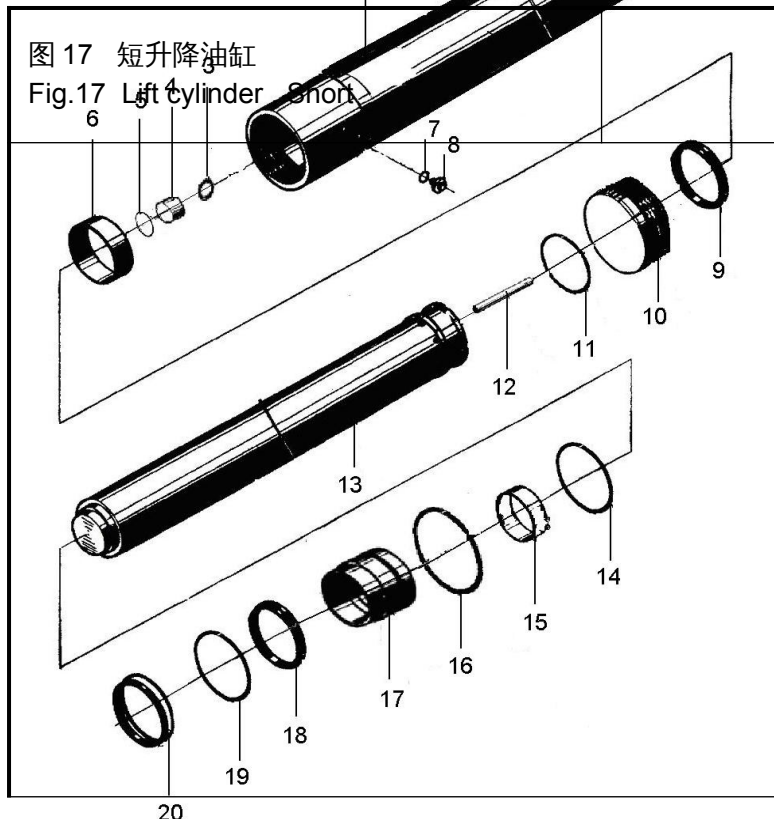


图 17 短升降油缸
Fig.17 Lift cylinder Short

2级全自由门架 DUPLEXMAST

序号 Item	物料码 Part No	名称 Description	数量 Qty	备注或适用车型 Remarks or Serial NO	原物料码 Original Part No
8	300040070030	螺钉 M6×8	1		G000818-006008-00
9	209800060026	格莱圈 D75	1	2t-2.5t	RC25N450-800005-G00
9	209800060023	格莱圈 D85	1	3t	RC30N450-800005-G00
9	209800060012	格莱圈 D95	1	3.5t-3.8t	X35N450-800010-G00
10	209800050046	活塞	1	2t-2.5t	RC25N450-800004-W00
10	209800050040	活塞	1	3t-3.8t	RC30N450-800004-W00
11	209800090194	钢丝挡圈 φ4	1	2t-3t	RC25N450-800005-W00
11	209800090102	钢丝挡圈 φ4	1	3.5t-3.8t	X35N450-800005-W00
12	209800090193	钢管	1		RC25N450-800006-W00

	13	选配表 10	活塞杆	1	2t-2.5t	
	13	选配表 10	活塞杆	1	3t	
	13	选配表 10	活塞杆	1	3.5t-3.8t	
	14	300130010122	O 形密封圈 75×3.1	1	2t-2.5t	G001235-007503P1-00
	14	300130010132	O 形密封圈 85×3.1	1	3t	G001235-008503P1-00
	14	300130010072	O 形密封圈 95×3.1	1	3.5t-3.8t	G001235-009503P1-00

图 17 短升降油缸 Fig.17 Lift cylinder , Short	2 级全自由门架 DUPLEXMAST					
	序号 Item	物料码 Part No	名称 Description	数量 Qty	备注或适用车型 Remarks or Serial NO	原物料码 Original Part No
	15	209800090192	复合衬套 60×35	1	2t-2.5t	RC25N450-800001-G00
	15	209800090184	复合衬套 70×35	1	3t	RC30N450-800001-G00
	15	209800090101	复合衬套 70×35	1	3.5t-3.8t	X35N450-800008-G00
	16	300130010088	O 形密封圈 80×3.1	1	2t-2.5t	G001235-008003P1-00
	16	300130010091	O 形密封圈 90×3.1	1	3t	G001235-009003P1-00
	16	300130010119	O 形密封圈 100×3.1	1	3.5t-3.8t	G001235-010003P1-00
	17	209800040018	缸盖	1	2t-2.5t	RC25N450-800003-W00
	17	209800040015	缸盖	1	3t	RC30N450-800003-W00

	17	209800040008	缸盖	1	3.5t-3.8t	X35N450-800003-W00
	18	204100070394	ISI 密封圈 d60	1	2t-2.5t	FU0746K0-G00
	18	204100070396	ISI 密封圈 d70	1	3t	FU0849K0-G00
	18	204100070342	ISI 密封圈 d80	1	3.5t-3.8t	FU0939K0-01-G00
	19	209800090189	保护圈 70×60×2	1	2t-2.5t	RC25N450-800002-W00
	19	209800090182	保护圈 80×70×2	1	3t	RC30N450-800002-W00
	19	209800090100	保护圈 80×70×2	1	3.5t-3.8t	X35N450-800002-W00

图 17 短升降油缸 Fig.17 Lift cylinder , Short	2 级全自由门架 DUPLEXMAST					
	序号 Item	物料码 Part No	名称 Description	数量 Qty	备注或适用车型 Remarks or Serial NO	原物料码 Original Part No
	20	209990000129	LBH 防尘圈 d60	1	2t-2.5t	CL0107C0-G00
	20	209990000131	LBH 防尘圈 d70	1	3t	CL0121C0-G00
	20	209800060011	LBH 防尘圈 d80	1	3.5t-3.8t	X35N450-800007-G00
	K1	820020000016	短缸修理包	1	For 2t-2.5t	RC25N450-8-000-kit
	K2	820020000017	短缸修理包	1	For 3t	RC30N450-8-000-kit
	K3	820020000018	短缸修理包	1	For 3.5t-3.8	X35N450-8-000-kit

(2-2.5t) 选配表 10-1 <Optional Parts List 10-1>

序号 Item	A1 (2t-2.5t) 短升降油缸 Lift cylinder, Short	2 缸体 Cylinder body	13 活塞杆 Piston rod
起升高度 Lift Height	物料码 Part No.	物料码 Part No.	物料码 Part No.
2000	209800002168	209800011944	209800021263
2500	209800002169	209800011945	209800021264
2700	209800002170	209800011946	209800021265
3000	209800000409	209800010304	209800020205
3300	209800002171	209800011947	209800021266
3500	209800002172	209800011948	209800021267
3600	209800002173	209800011949	209800021268
3700	209800002174	209800011950	209800021269
4000	209800002175	209800011951	209800021270

序号 Item	A1 (2t-2.5t) 短升降油缸 Lift cylinder,Short	2 缸体 Cylinder body	13 活塞杆 Piston rod
起升高度 Lift Height	原物料码 Original Part No.	原物料码 Original Part No.	原物料码 Original Part No.
2000	RC25U200-800000-000	RC25U200-801000-W00	RC25U200-800001-W00
2500	RC25U250-800000-000	RC25U250-801000-W00	RC25U250-800001-W00
2700	RC25N430-800000-000	RC25N430-801000-W00	RC25N430-800001-W00
3000	RC25N450-800000-000	RC25N450-801000-W00	RC25N450-800001-W00
3300	RC25N500-800000-000	RC25N500-801000-W00	RC25N500-800001-W00
3500	RC25U350-800000-000	RC25U350-801000-W00	RC25U350-800001-W00
3600	RC25U360-800000-000	RC25U360-801000-W00	RC25U360-800001-W00
3700	RC25U370-800000-000	RC25U370-801000-W00	RC25U370-800001-W00
4000	RC25U400-800000-000	RC25U400-801000-W00	RC25U400-800001-W00

(3t) 选配表 10-2 <Optional Parts List 10-2>

序号 Item	A1 (3t) 短升降油缸 Lift cylinder,Short	2 缸体 Cylinder body	13 活塞杆 Piston rod
起升高度 Lift Height	物料码 Part No.	物料码 Part No.	物料码 Part No.
2000	209800002127	209800012437	209800021586
2500	209800002128	209800012438	209800021587
2700	209800002159	209800011926	209800021238
3000	209800000397	209800010292	209800020191
3300	209800002161	209800011928	209800021240
3500	209800002131	209800011929	209800021241
3600	209800002132	209800012440	209800021591
3700	209800002133	209800012441	209800021592
4000	209800002134	209800012442	209800021593

序号 Item	A1 (3t) 短升降油缸 Lift cylinder, Short	2 缸体 Cylinder body	13 活塞杆 Piston rod
起升高度 Lift Height	原物料码 Original Part No.	原物料码 Original Part No.	原物料码 Original Part No.
2000	RC30U200-800000-000	RC30U200-801000-W00	RC30U200-800001-W00
2500	RC30U250-800000-000	RC30U250-801000-W00	RC30U250-800001-W00
2700	RC30N430-800000-000	RC30N430-801000-W00	RC30N430-800001-W00
3000	RC30N450-800000-000	RC30N450-801000-W00	RC30N450-800001-W00
3300	RC30N500-800000-000	RC30N500-801000-W00	RC30N500-800001-W00
3500	RC30U350-800000-000	RC30U350-801000-W00	RC30U350-800001-W00
3600	RC30U360-800000-000	RC30U360-801000-W00	RC30U360-800001-W00
3700	RC30U370-800000-000	RC30U370-801000-W00	RC30U370-800001-W00
4000	RC30U400-800000-000	RC30U400-801000-W00	RC30U400-800001-W00

(3.5t-3.8t) 选配表 10-3 <Optional Parts List 10-3>

序号 Item	A1 (3.5t-3.8t)	2 缸体 Cylinder body	13 活塞杆 Piston rod
起升高度 Lift Height	物料码 Part No.	物料码 Part No.	物料码 Part No.
2000	209800002680	209800012298	209800021520
2500	209800002681	209800012299	209800021522
2700	209800002089	209800012303	209800021525
3000	209800000184	209800010111	209800020083
3300	209800002091	209800012305	209800021528
3500	209800002092	209800012306	209800021529
3600	209800002682	209800012300	209800021522
3700	209800002683	209800012301	209800021523

4000	209800002684	209800012302	209800021524
------	--------------	--------------	--------------

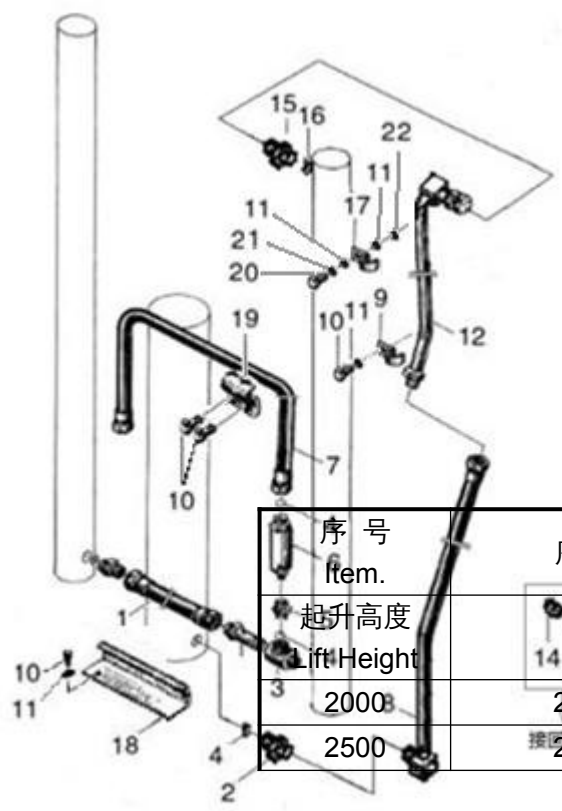
序号 Item	A1 (3.5t-3.8t)	2 缸体 Cylinder body	13 活塞杆 Piston rod
起升高度 Lift Height	原物料码 Original Part No.	原物料码 Original Part No.	原物料码 Original Part No.
2000	X35U200-800000-000	X35U200-801000-W00	X35U200-800001-W00
2500	X35U250-800000-000	X35U250-801000-W00	X35U360-800001-W00
2700	X35N430-800000-000	X35N430-801000-W00	X35N430-800001-W00
3000	X35N450-800000-000	X35N450-801000-W00	X35N450-800001-W00
3300	X35N500-800000-000	X35N500-801000-W00	X35N500-800001-W00
3500	X35U350-800000-000	X35U350-801000-W00	X35U350-800001-W00
3600	X35U360-800000-000	X35U360-801000-W00	X35U360-800001-W00
3700	X35U370-800000-000	X35U370-801000-W00	X35U370-800001-W00
4000	X35U400-800000-000	X35U400-801000-W00	X35U400-800001-W00

图 18 油路系统 Fig.18 Mast piping		2级全自由门架 DUPLEX MAST				
序号 Item	物料码 Part No	名称 Description	数量 Qty	备注或适用车型 Remarks or Serial NO	原物料码 Original Part No	
1	209850060634	胶管接头 Oil pipe assy	1	2t-2.5t	JGG-10A00430A0-000	
1	209850060679	胶管接头 Oil pipe assy	1	3t-3.8t	JGG-10A00423A0-000	
2	209850060089	直通管接头 Nipple	1		X25N450-200001-000	
3	209850060169	三通接头	1		RC25U300-704000-000	

	4	300130010134	O形密封圈 24×2.4	3		G001235-002402P4-00
	5	209850060171	直通管接头 Nipple	1		RC25U300-700002-000
	6	206200110008	单向限速阀	1	2t-2.5t	XSF2-F16L-2T-G00
	6	206200110007	单向限速阀	1	3t-3.8t	XSF2-F16L-3T-G00
	7	209990000806	胶管接头 Oil pipe assy	1		JGG-13A00910Z0-000
	8	选配表 11	胶管接头 Oil pipe assy	1		
	9	209850080108	管夹	1		2.5U3H-600004
	10	209500270220	螺栓 M8×1.25×16	5		N30M300-003000-000
	11	300030040014	垫圈 8	5		G0097P1-000008-00
	12	选配表 11	钢油管	1		
	13	209850090295	堵塞	1		N30U300-700007-000

图 18 油路系统 Fig.18 Mast piping	2级全自由门架 DUPLEX MAST					
	序号 Item	物料码 Part No	名称 Description	数量 Qty	备注或适用车型 Remarks or Serial NO	原物料码 Original Part No
	14	300290010006	喉箍 16	1		JT08870-0160000000-00
	15	209850060208	直通管接头 Nipple	1		N30N450-200003-000
	16	300030140016	垫圈 8	1		J000982-000022-00

17	209850080108	管夹	1		2.5U3H-600004
18	209850090777	油管护罩	1		XR30M300-701000-000
19	209850080105	油管夹	1		3M3H-700009A
20	300010040177	螺栓 M8×25	1		G005783-008025-00
21	300030010015	垫圈 8	1		G000093-000008-00
22	300020010016	螺母 M8	1		G006170-000008-00



选配表 11<Optional Parts List 11>

序号 Item.	序号 8 (2t-2.5t) 物料码 Part No.	序号 8 (3t-3.8t) 物料码 Part No.	序号 12 物料码 Part No.
起升高度 Lift Height			
2000	209850060683	209850060681	209850071601
2500	209850060682	209850060680	209850071602

2700			209850071603
3000			209850071136
3300			209850070004
3500			209850070005
3600			209850071613
3700			209850071614
4000			209850071615

选配表 11<Optional Parts List 11>

序号 Item.	序号 8 (2t-2.5t)	序号 8 (3t-3.8t)	序号 12
起升高度	原物料码	原物料码	原物料码

Lift Height	Original Part No.	Original Part No.	Original Part No.
2000	JGG-13A00385Z9-000	JGG-13A00375Z9-000	XR30U200-701000-000
2500	JGG-13A00455Z9-000	JGG-13A00445Z9-000	XR30U250-701000-000
2700			XR30U270-701000-000
3000			2.5U3H-601000A
3300			2.5U3.3H-501000A
3500			2.5U3.5H-501000A
3600			2.5U3.6H-501000A
3700			2.5U3.7H-501000A
4000			2.5U4H-501000A

图 19 侧移油路
Fig.19 lateral moving circuit

2 级全自由门架 DUPLEX MAST

序号 Item	物料码 Part NO	名称 Description	数量 Qty	备注或适用车型 Remarks or Serial NO	原物料码 Original Part No
1	209850090194	滑轮护板	1		RTE35V450-911000-000
2	300030010015	垫圈 8 Washer 8	7		G000093-000008-00
3	300040020096	螺钉 M8×16	1		G000070-008016-00
4	300030040014	垫圈 8 Washer 8	3		G0097P1-000008-00
5	209850090781	支架 Bracket	1		XR30V450-912000-000
6	209850090199	销轴 Shaft	2		RTE35V450-913000-000
7	300010040145	螺栓 M6×12 Bolt M6×12	1		G005783-006012-00
8	300030010014	垫圈 6 Washer 6	1		G000093-000006-00
9	209850050074	滑轮	2		XR30V450-910001-000
10	300040020074	螺钉 M10×25	10		G000070-010025-00
11	300030010001	垫圈 10 Washer 10	10		G000093-000010-00
12	300030040002	垫圈 10 Washer 10	10		G0097P1-000010-00
13	209850090198	套	2		RTE35V450-910002-000
14	选配表 12	胶管接头	1		

备注：安装第四联油路时，序号 14、15、20、28 取消。

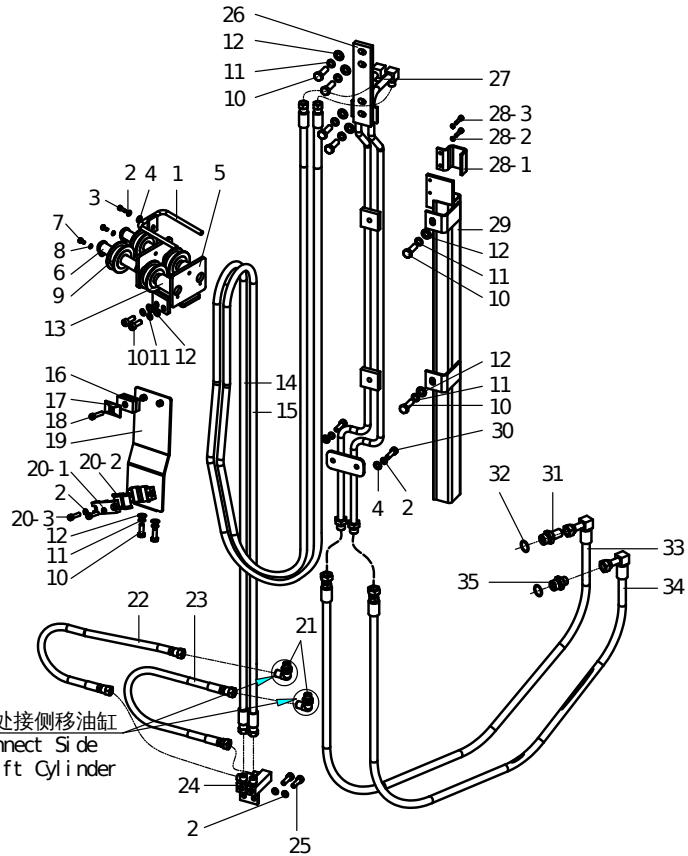
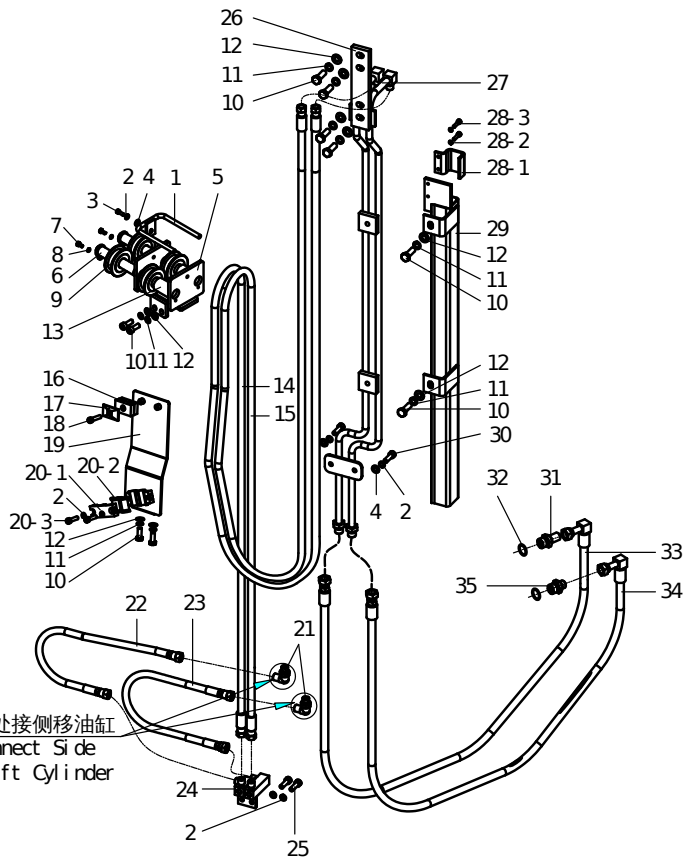


图 19 侧移油路
Fig.19 lateral moving circuit

2 级全自由门架 DUPLEX MAST

序号 Item	物料码 Part NO	名称 Description	数量 Qty	备注或适用车型 Remarks or Serial NO	原物料码 Original Part No
15	选配表 12	胶管接头	1		
16	310040040143	管夹	1		BT425M390-700005-000
17	206500040044	盖板	1		RT500-650006-000
18	300040020101	螺钉 M8×35	1		G000070-008035-00
19	209850090737	固定板组件	1		XR30C300-911000-000
20	209990023131	管夹组件	1	INC : 3, 20-1 ~ 20-3	AH35H300-904000-000
20-1	209990023365	管夹	2		AH35H300-904001-000
20-2	209990023366	橡胶垫	4		AH35H300-904002-000
20-3	300040020147	螺钉 M8×60	2		G000070-008060-00
21	209850060338	90°管接头	2		AH35B300-904000-000
22	209990000931	胶管接头	1	2t-2.5t	JGG-10B00375A0-000
22	209990000915	胶管接头	1	3t-3.8t	JGG-10B00460A0-000
23	209990000932	胶管接头	1	2t-2.5t	JGG-10B00650Z0-000
23	209990000916	胶管接头	1	3t-3.8t	JGG-10B00690Z0-000

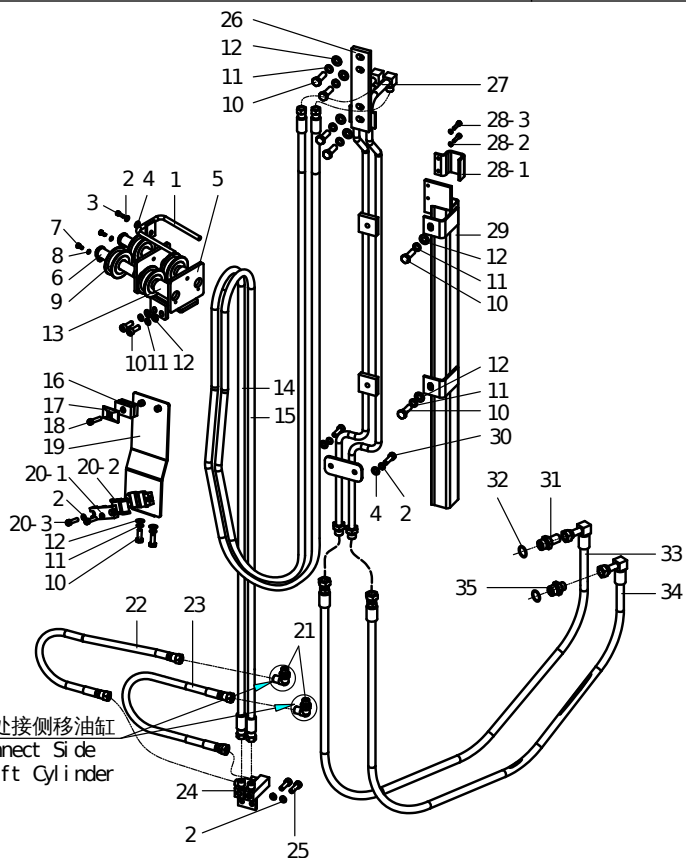


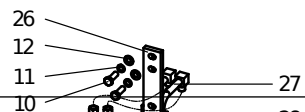
备注：安装第四联油路时，序号 14、15、20、28 取消。

图 19 侧移油路
Fig.19 lateral moving circuit

2 级全自由门架 DUPLEX MAST

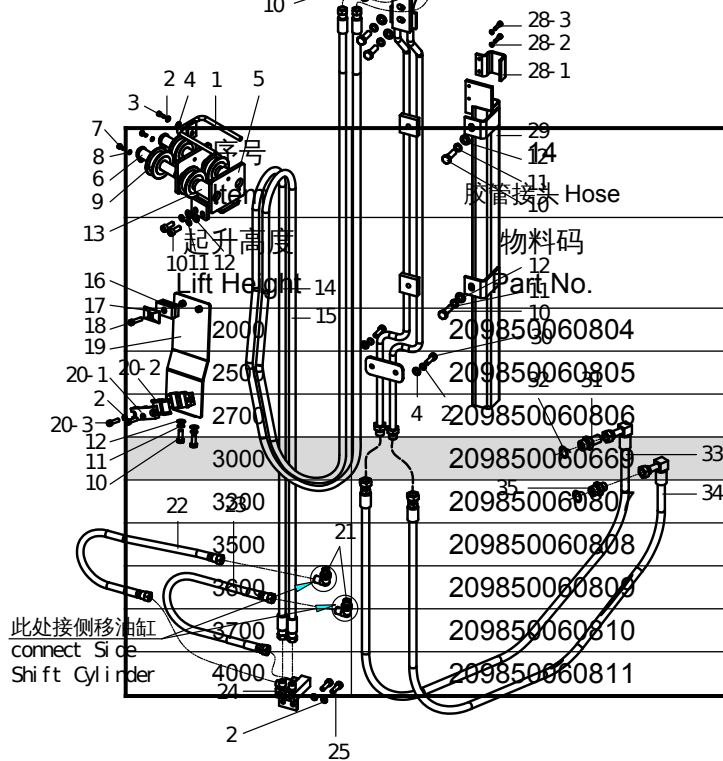
序号 Item	物料码 Part NO	名称 Description	数量 Qty	备注或适用车型 Remarks or Serial NO	原物料码 Original Part No
24	209850020069	接头支座	1		AH35W450-902000-000
25	300040020098	螺钉 M8×25	2		G000070-008025-00
26	209850090766	连接板	1	2t-2.5t	XR25C300-907001-000
26	209990023141	连接板	1	3t	AH35H300-907001-000
26	209850090767	连接板	1	3.5t-3.8t	XR35C300-907001-000
27	选配表 12	钢油管	1		
28	209990023400	管夹组件	1	INC : 28-1 ~ 28-3	AH35H300-901000-000
28-1	209990023140	管夹	2		AH35H300-901001-000
28-2	300040020127	螺钉 M5×12	2		G000070-005012-00
28-3	300030010013	垫圈 5 Washer 5	2		G000093-000005-00
29	选配表 12	外门架滑导	1		
30	300040020097	螺钉 M8×20	2		G000070-008020-00
31	209850060342	直通接头 Nipple	1		A30N800-900005-000





备注：安装第四联油路时，序号 14、15、20、28 取消。

选配表 12<Optional Parts List 12>



	15	27	29
	胶管接头 Hose	钢油管 Oil pipe assy	外门架滑导 Slider
	物料码	物料码	物料码
	Part No.	Part No.	Part No.
209850060804	209850060812	209850071583	209850090844
209850060805	209850060813	209850071584	209850090845
209850060806	209850060814	209850071585	209850090846
209850060669	209850060670	209850040750	209990023135
209850060807	209850060815	209850071586	209850090847
209850060808	209850060816	209850071587	209850090848
209850060809	209850060817	209850071588	209850090849
209850060810	209850060818	209850071589	209850090850
209850060811	209850060819	209850071590	209850090851

选配表 12<Optional Parts List 12>

序号 Item	14 胶管接头 Hose	15 胶管接头 Hose	27 钢油管 Oil pipe assy	29 外门架滑导 Slider
起升高度 Lift Height	原物料码 Original Part No.	原物料码 Original Part No.	原物料码 Original Part No.	原物料码 Original Part No.
2000	XR35C200-905000-000	XR35C200-906000-000	XR35C200-903000-000	AH35H200-902000-000
2500	XR35C250-905000-000	XR35C250-906000-000	XR35C250-903000-000	AH35H250-902000-000
2700	XR35C270-905000-000	XR35C270-906000-000	XR35C270-903000-000	AH35H270-902000-000
3000	XR30C300-905000-000	XR30C300-906000-000	XR30C300-903000-000	AH35H300-902000-000
3300	XR35C330-905000-000	XR35C330-906000-000	XR35C330-903000-000	AH35H330-902000-000
3500	XR35C350-905000-000	XR35C350-906000-000	XR35C350-903000-000	AH35H350-902000-000
3600	XR35C360-905000-000	XR35C360-906000-000	XR35C360-903000-000	AH35H360-902000-000
3700	XR35C370-905000-000	XR35C370-906000-000	XR35C370-903000-000	AH35H370-902000-000
4000	XR35C400-905000-000	XR35C400-906000-000	XR35C400-903000-000	AH35H400-902000-000

图 20 第四联油路
Fig20 Fourth oil

2 级全自由门架 DUPLEX MAST

序号 Item	物料码 Part No	名称 Description	数量 Qty	备注或适用车型 Remarks or Serial NO	原物料码 Original Part No
1	209850040753	钢油管	1	2t-2.5t	XR25C300-808000-000
1	209990023378	钢油管	1	3t	AH35H300-808000-000
1	209850040754	钢油管	1	3.5t-3.8t	XR35C300-808000-000
2	选配表 13	胶管接头	1		
3	选配表 13	胶管接头	1		

<p>此处参照侧移油路，取消套（序4），增加4只滑轮 See lateral moving circuit, but cancel the cover (Nb. 14), and increase four pulleys</p> <p>具体见对应侧移油路 See lateral moving circuit</p>	4	310040040143	管夹 Clip	1		BT425M390-700005-000
	5	206500040044	盖板 Cover	1		RT500-650006-000
	6	300040020101	螺钉 M8×35 Screw M8×35	1		G000070-008035-00
	7	209990023365	管夹 Clip	4		AH35H300-904001-000
	8	209990023366	橡胶垫 Rubber pad	8		AH35H300-904002-000
	9	300030010015	垫圈 8 Washer 8	6		G000093-000008-00
	10	300040020147	螺钉 M8×60 Screw M8×60	2		G000070-008060-00
	11	209850090453	闷盖 Cover	2		AH35W450-805000-000
	12	300040020098	螺钉 M8×25 Screw M8×25	2		G000070-008025-00
	13	209850020030	接头支座 Joint support	1		RTE35V450-802000-000

图 20 第四联油路 Fig20 Fourth circuit		2级全自由门架 DUPLEX MAST				
序号 Item	物料码 Part No	名称 Description	数量 Qty	备注或适用车型 Remarks or Serial NO	原物料码 Original Part No	
14	204201000191	抱箍组件 Bracket assembly	1		RTE25B300-901000-000	
15	209990023363	管夹 Clip			AH35H300-802001-000	
16	209850060342	直通接头 Nipple	1		A30N800-900005-000	
17	300130010089	O形密封圈 22×2.4 O-ring 22×2.4	2		G001235-002202P4-00	

	18	选配表 13	胶管接头	1		
	19	选配表 13	胶管接头	1		
	20	209850060343	直通接头 Nipple	1		A30N800-900006-000
	21	300010040009	螺钉 M10×25	3		G005783-010025-00
	22	300030010001	垫圈 10 Washer 10	3		G000093-000010-00
	23	300030040002	垫圈 10 Washer 10	3		G0097P1-000010-00

选配表 13 <Optional Parts List 13>

序号 Item	2 胶管接头 Hose	3 胶管接头 Hose	18 胶管接头 Hose	19 胶管接头 Hose
起升高度 Lift Height	物料码 Part No.	物料码 Part No.	物料码 Part No.	物料码 Part No.
2000	209850060788	209850060796	209850060772	209850060781
2500	209850060789	209850060797	209850060773	209850060780
2700	209850060790	209850060798	209850060774	209850060782
3000	209850060665	209850060666	209850060667	209850060668

3300	209850060791	209850060799	209850060775	209850060783
3500	209850060792	209850060800	209850060776	209850060784
3600	209850060793	209850060801	209850060777	209850060785
3700	209850060794	209850060802	209850060778	209850060786
4000	209850060795	209850060803	209850060779	209850060787

选配表 13 <Optional Parts List 13>

序号 Item	2 胶管接头 Hose	3 胶管接头 Hose	18 胶管接头 Hose	19 胶管接头 Hose
起升高度 Lift Height	原物料码 Original Part No.	原物料码 Original Part No.	原物料码 Original Part No.	原物料码 Original Part No.
2000	XR35C200-805000-000	XR35C200-806000-000	JGG-10B01600Z1-000	JGG-10B01530Z1-000

2500	XR35C250-805000-000	XR35C250-806000-000	JGG-10B01850Z1-000	JGG-10B01780Z1-000
2700	XR35C270-805000-000	XR35C270-806000-000	JGG-10B01950Z1-000	JGG-10B01880Z1-000
3000	XR30C300-805000-000	XR30C300-806000-000	JGG-10B02100Z1-000	JGG-10B02030Z1-000
3300	XR35C330-805000-000	XR35C330-806000-000	JGG-10B02250Z1-000	JGG-10B02180Z1-000
3500	XR35C350-805000-000	XR35C350-806000-000	JGG-10B02350Z1-000	JGG-10B02280Z1-000
3600	XR35C360-805000-000	XR35C360-806000-000	JGG-10B02400Z1-000	JGG-10B02330Z1-000
3700	XR35C370-805000-000	XR35C370-806000-000	JGG-10B02450Z1-000	JGG-10B02380Z1-000
4000	XR35C400-805000-000	XR35C400-806000-000	JGG-10B02650Z1-000	JGG-10B02580Z1-000

图 21 起升组件
Fig. 21 Lifting part

3 级全自由门架 TRIPLEX MAST

序号 Item	物料码 Part No	名称 Description	数量 Qty	备注或适用车型 Remarks or Serial NO	原物料码 Original Part No
1	见图 23	门架	1		
2	见图 22	链条总成	2		
3	300010060030	螺栓 M12×1.25×40	2		G005786-012040-00
4	300030010002	垫圈 12	5		G000093-000012-00
5	300030040003	垫圈 12	4		G0097P1-000012-00
6	209500270228	油缸调整垫圈	2		N30M300-000012-000
7	208850010014	链轮	2	2t-3t	780408-G00
7	209500110022	链轮	2	3.5t-3.8t	3.5N4.5H-000002-G00
8	300060030016	轴用弹性挡圈-A型40	2		G0894P1-000040-00
9	见图 28	油路系统	1		
10	209750010071	挡货架	1	2t~2.5t	N25M300-020000-000
10	209750010008	挡货架	1	3t~3.8t	N30M300-020000-002
11	209500210024	销轴	2		N30N450-001000-000
12	300170040002	油杯 M10×1	4		G001152-010001-00
13	209500270217	螺栓 M10×1.25×20	4		N30M300-004000-000

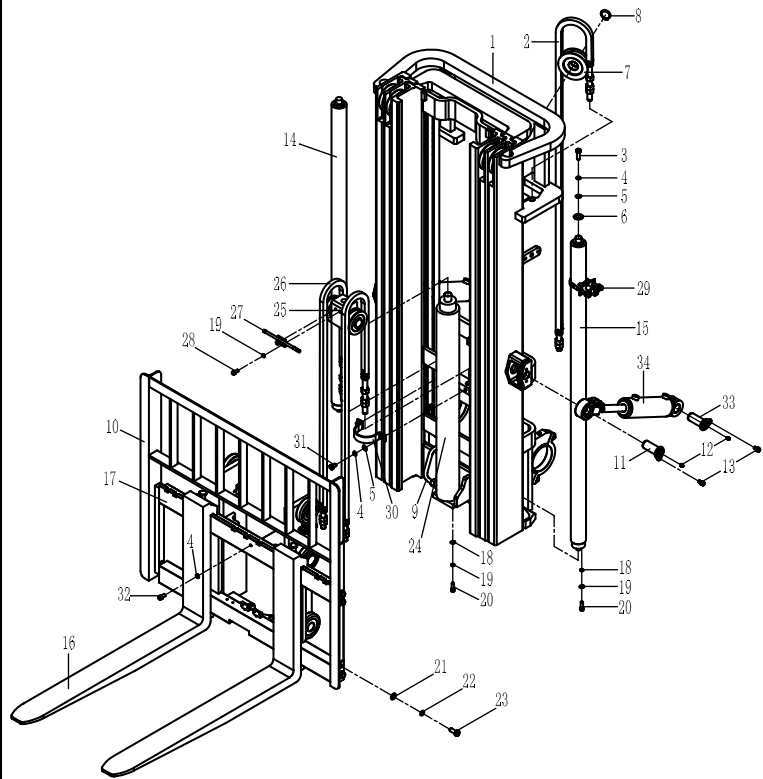
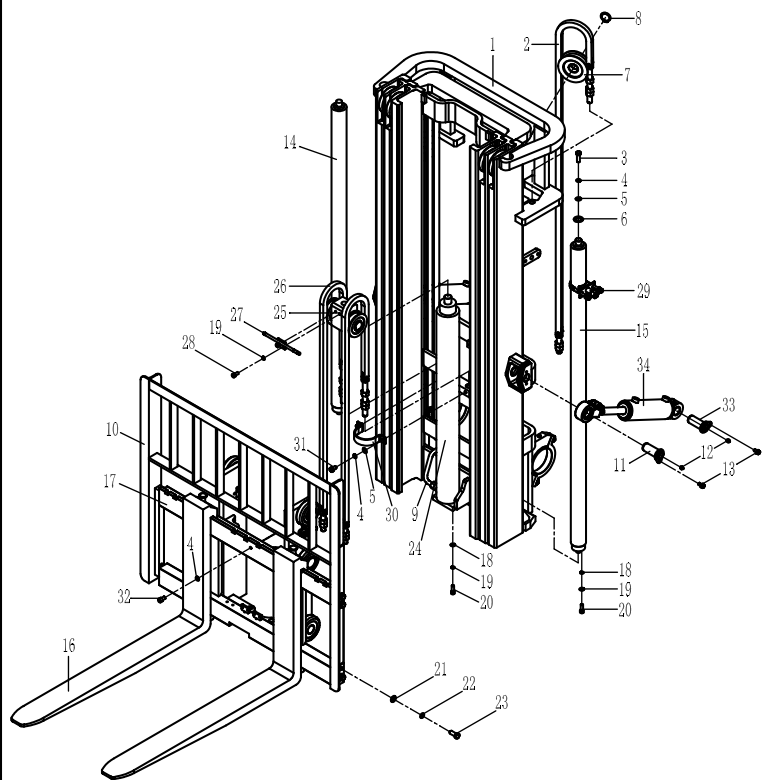


图 21 起升组件
Fig. 21 Lifting part

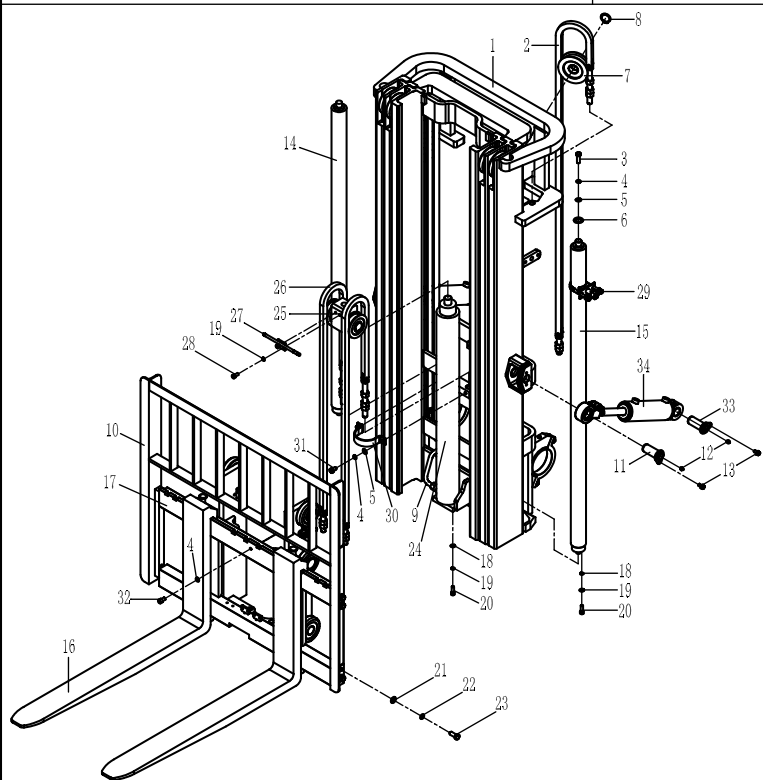
3级全自由门架 TRIPLEX MAST



序号 Item	物料码 Part No	名称 Description	数量 Qty	备注或适用车型 Remarks or Serial NO	原物料码 Original Part No
14	见图 26	左升降油缸	1		
15	见图 26	右升降油缸	1		
16	见图 IV	货叉总成	1		
17	见图 24	货叉架总成	1		
17	见图 25	侧移架总成	1		
18	300030040002	垫圈 10	3		G0097P1-000010-00
19	300030010001	垫圈 10	4		G000093-000010-00
20	300040020075	螺钉 M10×30	3		G000070-010030-00
21	300030040004	垫圈 14	8		G0097P1-000014-00
22	300030010003	垫圈 14	8		G000093-000014-00
23	300010060060	螺栓 M14×1.5×35	8		G005786-014035-01
24	见图 27	短升降油缸	1		
25	见图 VI	链条座	1		
26	见图 22	链条总成	2		
27	209500270144	链轮护板	1		RTE35N450-004100-000

图 21 起升组件
Fig. 21 Lifting part

3级全自由门架 TRIPLEX MAST



序号 Item	物料码 Part No	名称 Description	数量 Qty	备注或适用车型 Remarks or Serial NO	原物料码 Original Part No
28	300040020073	螺钉 M10×20	2		G000070-010020-00
29	见图 V	油缸抱箍	2		
30	209550010252	油缸固定板 Cylinder	1	2t-2.5t	RC25N450-000001-000
30	209550010242	油缸固定板 Cylinder	1	3t	RC30N450-000001-000
30	209550010078	油缸固定板 Cylinder	1	3.5t-3.8t	X35N450-000001-000
31	300010040030	螺栓 M12×20	2		G005783-012020-00
32	300040020151	螺钉 M12×20	1		G000070-012020-00
33	209500210028	销轴	2		N30M300-001000-000
34	见图 8-1 See Fig.8-1	倾斜油缸	2	2.0t-3.0t	
34	见图 8-2 See Fig.8-2	倾斜油缸	2	3.5t-3.8t	

--	--	--	--	--	--

图 22 链条总成 Fig.22 Chain assy		3级全自由门架 TRIPLEX MAST				
序号 Item	物料码 Part No.	名称 Description	数量 Qty	备注或适用车型 Remarks or Serial NO	原物料码 Original Part No.	
A1	选配表 14	链条总成	2	2t~2.5t		
A2	选配表 14	(前缸上用) Chain assy	2	3t		
A3	选配表 14	(Lifting cylinder,Short)	2	3.5t-3.8t		
A4	选配表 14	链条总成	2	2t~2.5t		
A5	选配表 14	(左右升降油缸) Chain assy	2	3t		
A6	选配表 14	(Lifting cylinder,R/L)	2	3.5t-3.8t		
1	NO PART NO.	板式链 LH1623×N	1	2t-3t		
1	NO PART NO.	板式链 LH1634×N	1	3.5t-3.8t		
2	300050010038	销 3×20	2	2t-3t	G000091-003020-00	
2	300050010027	销 3.2×20	2	3.5t-3.8t	G000091-3P2020-00	
3	NO PART NO.	销轴	2	2t-3t		
3	NO PART NO.	销轴	2	3.5t-3.8t		
4	NO PART NO.	链条接头	1	2t-3t		

选配表 14 <Optional Parts List 14>

序号 Item	A1(2t-2.5t)	A2(3t)	A3(3.5t-3.8t)	A4(2t-2.5t)	A5(2t-3t)	A6 (3.5t-3.8t)
起升高度 Lift Height	物料码 Part No.	物料码 Part No.	物料码 Part No.	物料码 Part No.	物料码 Part No.	物料码 Part No.
4000	209500190063	209500190063	209500190112	209500190197	209500190197	209500190157
4300	209500190085	209500190085	209500190101	209500190033	209500190199	209500190056
4500	209500190055	209500190055	209500190114	209500190199	209500190051	209500190064
4700	209500190023	209500190197	209500190166	209500190047	209500190068	209500190118
4800				209500190068	209500190053	209500190115
5000	209500190033	209500190199	209500190965	209500190994	209500190178	209500190113
5500	209500190068	209500190053	209500190118	209500190977	209500190192	209500190947
6000	209500190025	209500190040	209500190967	209500190017	209500191001	209500190894
6500	209500191031	209500190028	209500190029	209500190980	209500190980	209500190949
7000	209500190071	209500190017	209500190969	209500190983	209500190983	209500190950
7500	209500191013	209500191013	209500190970	209500191004	209500191004	209500190951

选配表 14 <Optional Parts List 14>

序号 Item	A1(2t-2.5t)	A2(3t)	A3(3.5t-3.8t)	A4(2t-2.5t)	A5(2t-3t)	A6 (3.5t-3.8t)
起升高度 Lift Height	原物料码 Original Part No.	原物料码 Original Part No.	原物料码 Original Part No.	原物料码 Original Part No.	原物料码 Original Part No.	原物料码 Original Part No.
4000	LH-1623057-100	LH-1623057-100	LH-1634057-100	LH-1623069-100	LH-1623069-100	LH-1634071-100
4300	LH-1623061-100	LH-1623061-100	LH-1634061-100	LH-1623071-100	LH-1623073-100	LH-1634075-100
4500	LH-1623065-100	LH-1623065-100	LH-1634065-100	LH-1623073-100	LH-1623075-100	LH-1634077-100
4700	LH-1623067-100	LH-1623069-100	LH-1634069-100	LH-1623077-100	LH-1623079-100	LH-1634081-100
4800				LH-1623079-100	LH-1623081-100	LH-1634083-100
5000	LH-1623071-100	LH-1623073-100	LH-1634073-100	LH-1623083-100	LH-1623085-100	LH-1634087-100
5500	LH-1623079-100	LH-1623081-100	LH-1634081-100	LH-1623091-100	LH-1623093-100	LH-1634095-100
6000	LH-1623087-100	LH-1623089-100	LH-1634089-100	LH-1623101-100	LH-1623103-100	LH-1634103-100
6500	LH-1623095-100	LH-1623097-100	LH-1634097-100	LH-1623109-100	LH-1623109-100	LH-1634113-100
7000	LH-1623099-100	LH-1623101-100	LH-1634101-100	LH-1623119-100	LH-1623119-100	LH-1634123-100
7500	LH-1623107-100	LH-1623107-100	LH-1634107-100	LH-1623127-100	LH-1623127-100	LH-1634131-100

图 23 门架
Fig.23 Mast

2t-3.8t 3级全自由门架 TRIPLEX MAST

序号 Item	物料码 Part No	名称 Description	数量 Qty	备注或适用车型 Remarks or Serial	原物料码 Original Part No
1	选配表 15	外门架	1		
2	209500270224	调整垫片	4		G006171-000020-02
3	209500270211	导轨衬垫	4		G006171-000020-02
4	209500020002	复合滚轮组 Complex rolle assy	6	图 I Fig.I	G006171-000020-02
5	300170040002	油杯 M10×1	2		G006171-000020-02
6	209500220005	轴瓦	2		G006171-000020-02
7	209500230137	轴承盖	2		G006171-000020-02
8	300030010006	垫圈 20	2		G006171-000020-02
9	300010050053	螺栓 M20×1.5×110	2		G006171-000020-02
10	选配表 15	中门架	1		
11	选配表 15	内门架	1		

	12	209500020003	复合滚轮组 Complex rolle assv	2	图 I Fig.I	XR30M300-305000-000

选配表 15-1<Optional Parts List 15-1>

序号 Item	1(2t-2.5t)	1(3t)	1(3.5t-3.8t)	10 (2t-2.5t)	10 (3t)
起升高度 Lift Height	物料码 Part No.	物料码 Part No.	物料码 Part No.	物料码 Part No.	物料码 Part No.
4000	209550000562	209550000529	209550000496	209600000097	209600000087
4300	209550000563	209550000530	209550000497	209600000098	209600000088
4500	209550011051	209550010031	209550011049	209600000062	209600010003
4700	209550000564	209550000531	209550000498	209600000099	209600000089
4800	209550000565	209550000532	209550000499	209600000100	209600000090
5000	209550000566	209550000533	209550000500	209600000101	209600000091
5500	209550000567	209550000534	209550000501	209600000102	209600000092
6000	209550000568	209550000535	209550000502	209600000103	209600000093
6500	209550000569	209550000536	209550000503	209600000104	209600000094
7000	209550000570	209550000537	209550000504	209600000105	209600000095
7500	209550000571	209550000538	209550000505	209600000106	209600000096

选配表 15-1<Optional Parts List 15-1>

序号 Item	1(2t-2.5t)	1(3t)	1(3.5t-3.8t)	10 (2t-2.5t)	10 (3t)
起升高度 Lift Height	原物料码 Original Part No.	原物料码 Original Part No.	原物料码 Original Part No.	原物料码 Original Part No.	原物料码 Original Part No.
4000	XR25N400-101000-000	XR30N400-101000-000	XR35N400-101000-000	XR25N400-103000-000	XR30N400-103000-000
4300	XR25N430-101000-000	XR30N430-101000-000	XR35N430-101000-000	XR25N430-103000-000	XR30N430-103000-000
4500	XR25N450-101000-000	XR30N450-101000-000	XR35N450-101000-000	XR25N450-103000-000	XR30N450-103000-000
4700	XR25N470-101000-000	XR30N470-101000-000	XR35N470-101000-000	XR25N470-103000-000	XR30N470-103000-000

4800	XR25N480-101000-000	XR30N480-101000-000	XR35N480-101000-000	XR25N480-103000-000	XR30N480-103000-000
5000	XR25N500-101000-000	XR30N500-101000-000	XR35N500-101000-000	XR25N500-103000-000	XR30N500-103000-000
5500	XR25N550-101000-000	XR30N550-101000-000	XR35N550-101000-000	XR25N550-103000-000	XR30N550-103000-000
6000	XR25N600-101000-000	XR30N600-101000-000	XR35N600-101000-000	XR25N600-103000-000	XR30N600-103000-000
6500	XR25N650-101000-000	XR30N650-101000-000	XR35N650-101000-000	XR25N650-103000-000	XR30N650-103000-000
7000	XR25N700-101000-000	XR30N700-101000-000	XR35N700-101000-000	XR25N700-103000-000	XR30N700-103000-000
7500	XR25N750-101000-000	XR30N750-101000-000	XR35N750-101000-000	XR25N750-103000-000	XR30N750-103000-000

选配表 15-2<Optional Parts List 15-2>

序号 Item	10 (3.5t-3.8t)	11 (2t-2.5t)	11 (3t)	11 (3.5t-3.8t)
起升高度 Lift Height	物料码 Part No.	物料码 Part No.	物料码 Part No.	物料码 Part No.
4000	209600000077	209650000537	209650000504	209650000471
4300	209600000078	209650000539	209650000505	209650000472
4500	209600000060	209650000410	209650010030	209650000408
4700	209600000079	209650000538	209650000506	209650000473
4800	209600000080	209650000540	209650000507	209650000474
5000	209600000081	209650000541	209650000508	209650000475
5500	209600000082	209650000542	209650000509	209650000476
6000	209600000083	209650000543	209650000510	209650000477
6500	209600000084	209650000544	209650000511	209650000478
7000	209600000085	209650000545	209650000512	209650000479
7500	209600000086	209650000546	209650000513	209650000480

选配表 15-2<Optional Parts List 15-2>

序号 Item	10 (3.5t-3.8t)	11 (2t-2.5t)	11 (3t)	11 (3.5t-3.8t)
起升高度 Lift Height	原物料码 Original Part No.	原物料码 Original Part No.	原物料码 Original Part No.	原物料码 Original Part No.
4000	XR35N400-103000-000	XR25N400-102000-000	XR30N400-102000-000	XR35N400-102000-000
4300	XR35N430-103000-000	XR25N430-102000-000	XR30N430-102000-000	XR35N430-102000-000
4500	XR35N450-103000-000	XR25N450-102000-000	XR30N450-102000-000	XR35N450-102000-000
4700	XR35N470-103000-000	XR25N470-102000-000	XR30N470-102000-000	XR35N470-102000-000
4800	XR35N480-103000-000	XR25N480-102000-000	XR30N480-102000-000	XR35N480-102000-000
5000	XR35N500-103000-000	XR25N500-102000-000	XR30N500-102000-000	XR35N500-102000-000
5500	XR35N550-103000-000	XR25N550-102000-000	XR30N550-102000-000	XR35N550-102000-000
6000	XR35N600-103000-000	XR25N600-102000-000	XR30N600-102000-000	XR35N600-102000-000
6500	XR35N650-103000-000	XR25N650-102000-000	XR30N650-102000-000	XR35N650-102000-000
7000	XR35N700-103000-000	XR25N700-102000-000	XR30N700-102000-000	XR35N700-102000-000
7500	XR35N750-103000-000	XR25N750-102000-000	XR30N750-102000-000	XR35N750-102000-000

	000	000	000	
--	-----	-----	-----	--

图 24 货叉架总成 Fig.24 Fork shelf assy	3级全自由门架 TRIPLEX MAST						
	序号 Item	物料码 Part No	名称 Description	数量 Qty	备注或适用车型 Remarks or Serial NO	原物料码 Original Part No	
	A1	209700001147	货叉架总成	1	2t-2.5t	XR25N450-300000-000	
	A2	209700000063	货叉架总成	1	3t	XR30N450-300000-000	
	A3	209700001144	货叉架总成	1	3.5t-3.8t	XR35N450-300000-000	

	1	209700011214	货叉架	1	2t-2.5t	XR25N450-301000-000
	1	209700010041	货叉架	1	3t	XR30N450-301000-000
	1	209700011212	货叉架	1	3.5t-3.8t	XR35N450-301000-000
	2	209500020001	纵向滚轮组	2	图 II Fig.II	XR30M300-303000-000
	3	209500070005	侧滚轮组	2	图 III Fig.III	X25M300-302000-000
	4	209500050001	复合滚轮组 Complex rolle assv	2	图 I Fig.I	XR30M300-304000-000
	5	209500020003	复合滚轮组 Complex rolle assv	2	图 I Fig.I	XR30M300-305000-000

	3级全自由门架 TRIPLEX MAST					
	序号 Item	物料码 Part No	名称 Description	数量 Qty	备注或适用车型 Remarks or Serial NO	原物料码 Original Part No
	A1	209700001070	侧移架总成	1	2t-2.5t	XR25V450-300000-000
A2	209700001068	侧移架总成	1	3t	XR30V450-300000-000	

A3	209700001069	侧移架总成	1	3.5t-3.8t	XR35V450-300000-000
1	209700011187	叉架体	1	2t-2.5t	XR25V450-301000-000
1	209700011185	叉架体	1	3t	XR30V450-301000-000
1	209700011186	叉架体	1	3.5t-3.8t	XR35V450-301000-000
2	209500070002	侧滚轮组	2	图 III Fig.III	XR30M300-302000-000
3	209500020001	纵向滚轮组	2	图 II Fig.II	XR30M300-303000-000
4	209500050001	复合滚轮组 Complex rolle assv	2	图 I Fig.I	XR30M300-304000-000
5	209800000293	侧移油缸	1	见图6 See Fig.6	S16V450-303000-000
6	209700090045	侧移货叉架	1	2t-2.5t	J25V450-302000-000
6	209700090052	侧移货叉架	1	3t-3.8t	AH35W450-302000-000
7	300170040003	油杯 M6	5		G001152-006000-00
8	209700130048	塞铁	3		S16V450-300001-000
9	209700150003	挡块	2		1.4QS1-000006

图 25 侧移架总成 Fig.25 Side shifter assy		3级全自由门架 TRIPLEX MAST				
	序号 Item	物料码 Part No	名称 Description	数量 Qty	备注或适用车型 Remarks or Serial NO	原物料码 Original Part No
	10	209700130053	轴	2		S16V450-300005-001

	11	300050010032	销3.2×30	1		G000091-3P2030-00
	12	209700080091	挂钩板	2		S16V450-300006-000
	13	300010060076	螺栓 M16×1.5×50	4		G005786-016050-01
	14	300030010004	垫圈 16	4		G000093-000016-00
	15	300040180016	螺钉 M8×16	4		G000068-008016-00
	16	209700130051	下滑块	2		S16V450-300002-000
	17	209700130049	调整垫	2		S16V450-300008-000
	18	209700130050	调整垫	3		S16V450-300009-000
	19	209500020003	纵向滚轮组	2	图 I Fig.I	XR30M300-305000-000

图 26 右升降油缸/Lift cylinder,Right Fig.26 左升降油缸/Lift cylinder,Left	3级全自由门架 TRIPLEX MAST					
	序号 Item	物料码 Part No	名称 Description	数量 Qty	备注或适用车型 Remarks or Serial NO	原物料码 Original Part No

A1	选配表 16	右升降油缸	1		
A2	选配表 16	左升降油缸	1		
1	300060050002	挡圈 24	1	2t-2.5t	G0895P1-000024-00
1	300060050004	挡圈 30	1	3~3.8t	G0895P1-000026-00
2	209800050072	活塞	1	2t-2.5t	N25M300-400002-W00
2	209800050067	活塞	1	3t	N30M300-400002-W00
2	209800050146	活塞	1	3.5t-3.8t	3.5M3H-400003-W00
3	209800090281	支承圈	1	2t-2.5t	N25M300-400003-W00
3	209800090274	支承圈	1	3t	N30M300-400003-W00
3	209800090646	支承圈	1	3.5t-3.8t	3.5M3H-400004-W00
4	209800090279	保护圈	1	2t-2.5t	N25M300-400004-W00
4	209800090265	保护圈	1	3t	N30M300-400004-W00
4	209800090644	保护圈	1	3.5t-3.8t	3.5M3H-400007-W00
5	209990000158	OSI 密封圈 D50	1	2t-2.5t	FU0613L0-G00
注：序号 1,2,13,组装后为不可拆分整体,用户订购时应订购整个组合件。					

图 26 右升降油缸/Lift cylinder,Right Fig.26 左升降油缸/Lift cylinder,Left	3 级全自由门架 TRIPLEX MAST
---	-----------------------

序号 Item	物料码 Part No	名称 Description	数量 Qty	备注或适用车型 Remarks or Serial NO	原物料码 Original Part No
5	209990000159	OSI 密封圈 D56	1	3t	FU2144L0-G00
5	209990000160	OSI 密封圈 D60	1	3.5t-3.8t	FU0742L0-G00
6	209800090280	阀套	1	2t-2.5t	N25M300-400005-W00
6	209800090269	阀套	1	3t	N30M300-400005-W00
6	209800090261	阀套	1	3.5t-3.8t	N35M300-400005-W00
7	300060050002	挡圈 24	1	2t-2.5t	G0895P1-000024-00
7	300060050005	挡圈 30	1	3t-3.8t	G0895P1-000030-00
8	选配表 16	右缸体	1		
8	选配表 16	左缸体	1		
9	204100070376	DKI 防尘圈 d40	1	2t-2.5t	FD2342A0-G00
9	204100070377	DKI 防尘圈 d45	1	3t-3.8t	FD2633A0-G00
10	204100070389	ISI 密封圈 d40	1	2t-2.5t	FU0497K0-G00
10	204100070390	ISI 密封圈 d45	1	3t-3.8t	FU0567K0-G00
11	209800030058	导向套	1	2t-2.5t	N25M300-402000-W00
注：序号 1,2,13, 组装后为不可拆分整体, 用户订购时应订购整个组合件。					

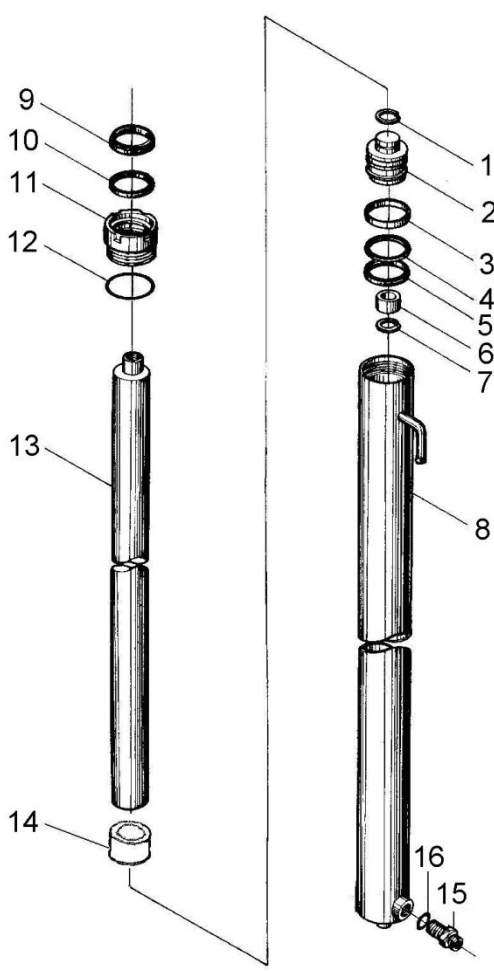
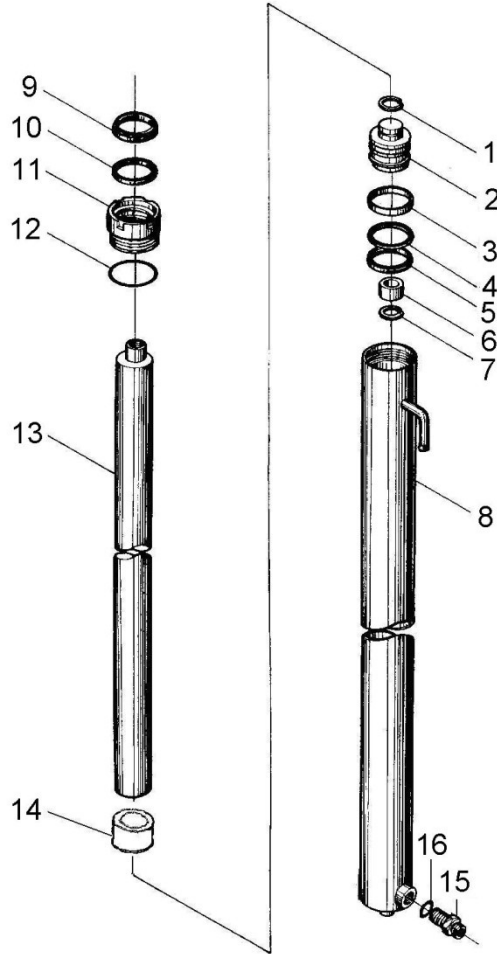


图 26 右升降油缸/Lift cylinder,Right
Fig.26 左升降油缸/Lift cylinder,Left

3级全自由门架 TRIPLEX MAST



序号 Item	物料码 Part No	名称 Description	数量 Qty	备注或适用车型 Remarks or Serial NO	原物料码 Original Part No
11	209800030052	导向套	1	3t	N30M300-402000-W00
11	209800030158	导向套	1	3.5t-3.8t	3.5M3H-402000-W00
12	300130010029	O形密封圈 51.5×2.65	1	2t-2.5t	G3452P1-51P52P65-00
12	300130010033	O形密封圈 56×2.65	1	3t	G3452P1-00562P65-00
12	300130010034	O形密封圈 60×2.65	1	3.5t-3.8t	G3452P1-00602P65-00
13	选配表 16	活塞杆	1		
14	选配表 16	隔套 Sheath	1		
15	209800080010	油嘴组件	1	2t-2.5t 右升降油缸	X25M300-403000-W00
15	209800080040	油嘴组件	1	3t-3.8t 右升降油缸	N30M300-403000-W00
16	810900000001	O形密封圈 14×2.65	1	2t-2.5t 右升降油缸	G001235-00142P65-00
16	300130010047	O形密封圈 19×2.65	1	3t-3.8t 右升降油缸	G3452P1-00192P65-00
K1	820020000005	左右缸修理包	1	INC:5,9,10,12,16	X25M300-4/5-000-kit
K2	820020000006	左右缸修理包	1	INC:5,9,10,12,16	X30M300-4/5-000-kit
K3	820020000007	左右缸修理包	1	INC:5,9,10,12,16,	X35M300-4/5-001-kit

注：序号 1,2,13,组装后为不可拆分整体,用户订购时应订购整个组合件。

选配表 16-1<Optional Parts List 16-1 > (2t-2.5t)

序号 Item	A1 Lift cylinder,Right	A2 Lift cylinder,Left	8 Cylinder body, R	8 Cylinder body, L	13 Piston rod	14 Sheath
起升高度 Lift Height	物料码 Part No.	物料码 Part No.	物料码 Part No.	物料码 Part No.	物料码 Part No.	物料码 Part No.
4000	209800002231	209800002242	209800011952	209800011962	209800021271	Without part14
4300	209800002232	209800002243	209800011953	209800011963	209800021272	
4500	209800000915	209800000916	209800010743	209800010744	209800020490	
4700	209800000236	209800000238	209800010153	209800010154	209800020341	
4800	209800002234	209800002245	209800011955	209800011965	209800021274	
5000	209800002235	209800002246	209800011956	209800011966	209800021275	
5500	209800002196	209800002201	209800011745	209800011750	209800021112	
6000	209800000232	209800000233	209800010148	209800010149	209800020941	
6500	209800002241	209800002249	209800011959	209800011969	209800021278	N25M400-400006-W00
7000	209800002206	209800002216	209800011756	209800011766	209800021117	
7500	209800002208	209800002218	209800011758	209800011768	209800021119	

选配表 16-1<Optional Parts List 16-1 > (2t-2.5t)

序号 Item	A1 Lift cylinder,Right	A2 Lift cylinder,Left	8 Cylinder body, R	8 Cylinder body, L	13 Piston rod	14 Sheath
起升高度 Lift Height	原物料码 Original Part No.	原物料码 Original Part No.	原物料码 Original Part No.	原物料码 Original Part No.	原物料码 Original Part No.	原物料码 Original Part No.
4000	AH25D400-400000-000	AH25D400-500000-000	AH25D400-401000-W00	AH25D400-501000-W00	AH25D400-400001-W00	Without part14
4300	AH25D430-400000-000	AH25D430-500000-000	AH25D430-401000-W00	AH25D430-501000-W00	AH25D430-400001-W00	
4500	AH25D450-400000-000	AH25D450-500000-000	AH25D450-401000-W00	AH25D450-501000-W00	AH25D450-400001-W00	
4700	X25M300-400000-001	X25M300-500000-001	X25M300-401000-W01	X25M300-501000-W01	N25M300-400001-W00	
4800	AH25D480-400000-000	AH25D480-500000-000	AH25D480-401000-W00	AH25D480-501000-W00	AH25D480-400001-W00	
5000	AH25D500-400000-000	AH25D500-500000-000	AH25D500-401000-W00	AH25D500-501000-W00	AH25D500-400001-W00	
5500	X25M350-400000-000	X25M350-500000-000	X25M350-401000-W01	X25M350-501000-W01	N25M350-400001-W00	
6000	X25M380-400000-000	X25M380-500000-000	X25M380-401000-W01	X25M380-501000-W01	N25M380-400001-W00	N25M360-400006-W00
6500	AH25D650-400000-000	AH25D650-500000-000	AH25D650-401000-W00	AH25D650-501000-W00	AH25D650-400001-W00	N25M400-400006-W00
7000	X25M450-400000-000	X25M450-500000-000	X25M450-401000-W01	X25M450-501000-W01	N25M450-400001-W00	
7500	X25M480-400000-000	X25M480-500000-000	X25M480-401000-W01	X25M480-501000-W01	N25M480-400001-W00	

选配表 16-2<Optional Parts List 16-2> (3t)

序号 Item	A1 Lift cylinder,Right	A2 Lift cylinder,Left	8 Cylinder body, R	8 Cylinder body, L	13 Piston rod	14 Sheath
起升高度 Lift Height	物料码 Part No.	物料码 Part No.	物料码 Part No.	物料码 Part No.	物料码 Part No.	物料码 Part No.
4000	209800002151	209800002155	209800011906	209800011916	209800021227	209800021154
4300	209800002152	209800002156	209800011907	209800011917	209800021228	
4500	209800002785	209800002786	209800012458	209800012459	209800021599	
4700	209800000218	209800000220	209800010136	209800010137	209800020318	Without part14
4800	209800002373	209800002383	209800011909	209800011919	209800021600	209800021154
5000	209800002374	209800002384	209800011911	209800011920	209800021601	
5500	209800002101	209800002106	209800011777	209800011782	209800021127	Without part14
6000	209800002153	209800002157	209800011912	209800011922	209800021233	209800021154
6500	209800002154	209800002158	209800011913	209800011923	209800021234	
7000	209800002111	209800002121	209800011914	209800011787	209800021132	
7500	209800002113	209800002123	209800011915	209800011789	209800021134	

选配表 16-2<Optional Parts List 16-2> (3t)

序号 Item	A1 Lift cylinder,Right	A2 Lift cylinder,Left	8 Cylinder body, R	8 Cylinder body, L	13 Piston rod	14 Sheath
起升高度 Lift Height	原物料码 Original Part No.	原物料码 Original Part No.	原物料码 Original Part No.	原物料码 Original Part No.	原物料码 Original Part No.	原物料码 Original Part No.
4000	XR30N400-400000-000	XR30N400-500000-000	XR30N400-401000-W00	XR30N400-501000-W00	XR30N400-400001-W00	N30M400-400002-W00
4300	XR30N430-400000-000	XR30N430-500000-000	XR30N430-401000-W00	XR30N430-501000-W00	XR30N430-400001-W00	
4500	X30N430-400000-000	X30N430-500000-000	X30N430-401000-W00	X30N430-501000-W00	RC30N430-400001-W00	
4700	X30M300-400000-001	X30M300-500000-001	X30M300-401000-W01	X30M300-501000-W01	N30M300-400001-W00	Without part14
4800	X30N470-400000-000	X30N470-500000-000	X30N470-401000-W00	X30N470-501000-W00	RC30N470-400001-W00	N30M400-400002-W00
5000	X30N480-400000-000	X30N480-500000-000	X30M350-401000-W00	X30N480-501000-W00	RC30N480-400001-W00	
5500	X30M350-400000-000	X30M350-500000-000	X30M350-401000-W01	X30M350-501000-W01	N30M350-400001-W00	Without part14
6000	XR30N600-400000-000	XR30N600-500000-000	XR30N600-401000-W00	XR30N600-501000-W00	XR30N600-400001-W00	N30M400-400002-W00
6500	XR30N650-400000-000	XR30N650-500000-000	XR30N650-401000-W00	XR30N650-501000-W00	XR30N650-400001-W00	
7000	X30M450-400000-000	X30M450-500000-000	X30M450-401000-W00	X30M450-501000-W01	N30M450-400001-W00	
7500	X30M480-400000-000	X30M480-500000-000	X30M480-401000-W00	X30M480-501000-W01	N30M480-400001-W00	

选配表 16-3 <Optional Parts List 16-3> (3.5t-3.8t)

序号 Item	A1 Lift cylinder,Right	A2 Lift cylinder,Left	8 Cylinder body, R	8 Cylinder body, L	13 Piston rod	14 Sheath
起升高度 Lift Height	物料码 Part No.	物料码 Part No.	物料码 Part No.	物料码 Part No.	物料码 Part No.	物料码 Part No.
4000	209800002060	209800002070	209800011870	209800011880	209800021193	3.5M3H-400006
4300	209800002061	209800002071	209800011871	209800011881	209800021194	
4500	209800000369	209800000370	209800010265	209800010266	209800020485	
4700	209800000374	209800000375	209800010270	209800010271	209800021195	
4800	209800002063	209800002073	209800011873	209800011883	209800021196	
5000	209800002064	209800002074	209800011874	209800011884	209800021197	
5500	209800002065	209800002075	209800011797	209800011812	209800021142	
6000	209800002066	209800002076	209800011876	209800011886	209800021199	
6500	209800002067	209800002077	209800011877	209800011887	209800021200	A30N800-400002-W00
7000	209800002068	209800002078	209800011804	209800011817	209800021147	
7500	209800002069	209800002079	209800011803	209800011819	209800021149	

选配表 16-3 <Optional Parts List 16-3> (3.5t-3.8t)

序号 Item	A1 Lift cylinder,Right	A2 Lift cylinder,Left	8 Cylinder body, R	8 Cylinder body, L	13 Piston rod	14 Sheath
起升高度 Lift Height	原物料码 Original Part No.	原物料码 Original Part No.	原物料码 Original Part No.	原物料码 Original Part No.	原物料码 Original Part No.	原物料码 Original Part No.
4000	RTE35N400-400000-000	RTE35N400-500000-000	RTE35N400-401000-W00	RTE35N400-501000-W00	RTE35N400-400001-W00	3.5M3H-400006
4300	RTE35N430-400000-000	RTE35N430-500000-000	RTE35N430-401000-W00	RTE35N430-501000-W00	RTE35N430-400001-W00	
4500	RTE35N450-400000-000	RTE35N450-500000-000	RTE35N450-401000-W00	RTE35N450-501000-W00	AH35D450-400001-W00	
4700	RTE35M300-400000-000	RTE35M300-500000-000	RTE35M300-401000-W00	RTE35M300-501000-W00	RTE35M300-400001-W00	
4800	RTE35N480-400000-000	RTE35N480-500000-000	RTE35N480-401000-W00	RTE35N480-501000-W00	RTE35N480-400001-W00	
5000	RTE35N500-400000-000	RTE35N500-500000-000	RTE35N500-401000-W00	RTE35N500-501000-W00	RTE35N500-400001-W00	
5500	RTE35M350-400000-000	RTE35M350-500000-000	RTE35M350-401000-W00	RTE35M350-501000-W00	RTE35M350-400001-W00	
6000	RTE35N600-400000-000	RTE35N600-500000-000	RTE35N600-401000-W00	RTE35N600-501000-W00	RTE35N600-400001-W00	
6500	RTE35N650-400000-000	RTE35N650-500000-000	RTE35N650-401000-W00	RTE35N650-501000-W00	RTE35N650-400001-W00	A30N800-400002-W00
7000	RTE35M450-400000-000	RTE35M450-500000-000	RTE35M450-401000-W00	RTE35M450-501000-W00	RTE35M450-400001-W00	
7500	RTE35M480-400000-000	RTE35M480-500000-000	RTE35M480-401000-W00	RTE35M480-501000-W00	RTE35M480-400001-W00	

图 27 短升降油缸
Fig.27 Lift cylinder, Short

2t-3.8t 3级全自由门架 TRIPLEX MAST

序号 Item	物料码 Part No	名称 Description	数量 Qty	备注或适用车型 Remarks or Serial NO	原物料码 Original Part No
A1	选配表 17	短升降油缸	1	2t-2.5t	
A2	选配表 17	短升降油缸	1	3t	
A3	选配表 17	短升降油缸	1	3.5t-3.8t	
1	209800090188	安全阀	1	2t-2.5t	RC25N450-802000-W00
1	209800080020	安全阀	1	3t-3.8t	RC30N450-802000-W00
2	选配表 17	缸体	1	2t-2.5t	
2	选配表 17	缸体	1	3t	
2	选配表 17	缸体	1	3.5t-3.8t	
3	300060010023	挡圈 28	1		G0893P1-000028-00
4	209800090191	单向阀	1		RC25N450-803000-W00

	5	300130010090	O形密封圈 26×2.4	1		G001235-002602P4-00
	6	209800090187	WR抗磨环 75×70×20	1	2t-2.5t	RC25N450-800002-G00
	6	209800090181	WR抗磨环 85×79×25	1	3t	RC30N450-800002-G00
	6	209800090099	WR抗磨环 95×89×25	1	3.5t-3.8t	X35N450-800009-G00
	7	300030140011	垫圈 6	1		J000982-000006-00

图 27 短升降油缸 Fig.27 Lift cylinder, Short		2t-3.8t 3级全自由门架 TRIPLEX MAST				
	序号 Item	物料码 Part No	名称 Description	数量 Qty	备注或适用车型 Remarks or Serial NO	原物料码 Original Part No
	8	300040070030	螺钉 M6×8	1		G000818-006008-00
	9	209800060026	格莱圈 D75	1	2t-2.5t	RC25N450-800005-G00
	9	209800060023	格莱圈 D85	1	3t	RC30N450-800005-G00
	9	209800060012	格莱圈 D95	1	3.5t-3.8t	X35N450-800010-G00
	10	209800050046	活塞	1	2t-2.5t	RC25N450-800004-W00
	10	209800050040	活塞	1	3t-3.8t	RC30N450-800004-W00
	11	209800090194	钢丝挡圈 φ4	1	2t-3t	RC25N450-800005-W00
	11	209800090102	钢丝挡圈 φ4	1	3.5t-3.8t	X35N450-800005-W00
	12	209800090193	钢管	1		RC25N450-800006-W00

	13	选配表 17	活塞杆	1		
	14	300130010122	O 形密封圈 75×3.1	1	2t-2.5t	G001235-007503P1-00
	14	300130010132	O 形密封圈 85×3.1	1	3t	G001235-008503P1-00
	14	300130010072	O 形密封圈 95×3.1	1	3.5t-3.8t	G001235-009503P1-00
	15	209800090192	复合衬套 60×35	1	2t-2.5t	RC25N450-800001-G00
	15	209800090184	复合衬套 70×35	1	3t	RC30N450-800001-G00

图 27 短升降油缸 Fig.27 Lift cylinder, Short		2t-3.8t 3级全自由门架 TRIPLEX MAST				
	序号 Item	物料码 Part No	名称 Description	数量 Qty	备注或适用车型 Remarks or Serial NO	原物料码 Original Part No
	15	209800090101	复合衬套 70×35	1	3.5t-3.8t	X35N450-800008-G00
	16	300130010088	O 形密封圈 80×3.1	1	2t-2.5t	G001235-008003P1-00
	16	300130010091	O 形密封圈 90×3.1	1	3t	G001235-009003P1-00
	16	300130010119	O 形密封圈 100×3.1	1	3.5t-3.8t	G001235-010003P1-00
	17	209800040018	缸盖	1	2t-2.5t	RC25N450-800003-W00
	17	209800040015	缸盖	1	3t	RC30N450-800003-W00
	17	209800040008	缸盖	1	3.5t-3.8t	X35N450-800003-W00
	18	204100070394	ISI 密封圈 d60	1	2t-2.5t	FU0746K0-G00

	18	204100070396	ISI 密封圈 d70	1	3t	FU0849K0-G00
	18	204100070342	ISI 密封圈 d80	1	3.5t-3.8t	FU0939K0-01-G00
	19	209800090189	保护圈 70×60×2	1	2t-2.5t	RC25N450-800002-W00
	19	209800090182	保护圈 80×70×2	1	3t	RC30N450-800002-W00
	19	209800090100	保护圈 80×70×2	1	3.5t-3.8t	X35N450-800002-W00
	20	209990000129	LBH 防尘圈 d60	1	2t-2.5t	CL0107C0-G00
	20	209990000131	LBH 防尘圈 d70	1	3t	CL0121C0-G00

图 27 短升降油缸 Fig.27 Lift cylinder, Short		2t-3.8t 3级全自由门架 TRIPLEX MAST				
	序号 Item	物料码 Part No	名称 Description	数量 Qty	备注或适用车型 Remarks or Serial NO	原物料码 Original Part No
	20	209800060011	LBH 防尘圈 d80	1	3.5t-3.8t	X35N450-800007-G00
	K1	820020000016	短缸修理包	1	For 2t-2.5t	RC25N450-8-000-kit
	K2	820020000017	短缸修理包	1	For 3t	RC30N450-8-000-kit
	K3	820020000018	短缸修理包	1	For 3.5t	X35N450-8-000-kit

选配表 17-1<Optional Parts List 17-1>(2t-2.5t)

序号 Item	A	2	13
起升高度 Lift Height	物料码 Part No.	物料码 Part No.	物料码 Part No.
4000	209800002170	209800011946	209800021265
4300	209800002223	209800011973	209800021282
4500	209800000406	209800020203	209800010303
4700	209800002171	209800011947	209800021266
4800			
5000	209800002172	209800011948	209800021267
5500	209800002226	209800011977	209800021285
6000	209800002227	209800011976	209800021286
6500	209800002228	209800011978	209800021287

7000	209800002229	209800011979	209800021288
7500	209800002230	209800011980	209800021289

选配表 17-1<Optional Parts List 17-1>(2t-2.5t)

序号 Item	A	2	13
起升高度 Lift Height	原物料码 Original Part No.	原物料码 Original Part No.	原物料码 Original Part No.
4000	RC25N430-800000-000	RC25N430-801000-W00	RC25N430-800001-W00
4300	RTE25N430-800000-000	RTE25N430-801000-W00	RTE25N430-800001-W00
4500	RC25NX-800000-000	RC25NX-800001-W00	RC25NX-801000-W00
4700	RC25N500-800000-000	RC25N500-801000-W00	RC25N500-800001-W00
4800			
5000	RC25U350-800000-000	RC25U350-801000-W00	RC25U350-800001-W00
5500	RTE25N550-800000-000	RTE25N550-801000-W00	RTE25N550-800001-W00

6000	RC25N650-800000-000	RC25N650-801000-W00	RC25N650-800001-W00
6500	RC25N700-800000-000	RC25N700-801000-W00	RC25N700-800001-W00
7000	RTE25N700-800000-000	RTE25N700-801000-W00	RTE25N700-800001-W00
7500	RTE25N750-800000-000	RTE25N750-801000-W00	RTE25N750-800001-W00

选配表 17-2 <Optional Parts List 17-2>(3t)

序号 Item	A	2	13
起升高度 Lift Height	物料码 Part No.	物料码 Part No.	物料码 Part No.
4000	209800002159	209800011926	209800021238
4300	209800002160	209800011927	209800021239
4500	209800000394	209800010291	209800020190
4700	209800002161	209800011928	209800021240
4800			
5000	209800002131	209800011929	209800021241
5500	209800002163	209800011930	209800021242

6000	209800002164	209800011932	209800021243
6500	209800002165	209800011933	209800021244
7000	209800002166	209800011934	209800021245
7500	209800002167	209800011935	209800021246

选配表 17-2 <Optional Parts List 17-2>(3t)

序号 Item	A	2	13
起升高度 Lift Height	原物料码 Original Part No.	原物料码 Original Part No.	原物料码 Original Part No.
4000	RC30N430-800000-000	RC30N430-801000-W00	RC30N430-800001-W00
4300	XR30N430-800000-000	XR30N430-801000-W00	XR30N430-800001-W00

4500	RC30NX-800000-000	RC30NX-801000-W00	RC30NX-800001-W00
4700	RC30N500-800000-000	RC30N500-801000-W00	RC30N500-800001-W00
4800			
5000	RC30U350-800000-000	RC30U350-801000-W00	RC30U350-800001-W00
5500	XR30N550-800000-000	XR30N550-801000-W00	XR30N550-800001-W00
6000	RC30N650-800000-000	RC30N650-801000-W00	RC30N650-800001-W00
6500	RC30N700-800000-000	RC30N700-801000-W00	RC30N700-800001-W00
7000	XR30N700-800000-000	XR30N700-801000-W00	XR30N700-800001-W00
7500	XR30N750-800000-000	XR30N750-801000-W00	XR30N750-800001-W00

选配表 17-3 <Optional Parts List 17-3>(3.5t-3.8t)

序号 Item	A	2	13
------------	---	---	----

起升高度 Lift Height	物料码 Part No.	物料码 Part No.	物料码 Part No.
4000	209800002089	209800012303	209800021525
4300	209800002090	209800012304	209800021526
4500	209800002781	209800012456	209800021597
4700	209800002091	209800012305	209800021528
4800			
5000	209800002092	209800012306	209800021529
5500	209800002093	209800012307	209800021530
6000	209800002094	209800012308	209800021531
6500	209800002095	209800012309	209800021532
7000	209800002096	2098000123010	209800021533
7500	209800002782	209800012457	209800021598

选配表 17-3 <Optional Parts List 17-3>(3.5t-3.8t)

序号 Item	A	2	13
起升高度 Lift Height	原物料码 Original Part No.	原物料码 Original Part No.	原物料码 Original Part No.
4000	X35N430-800000-000	X35N430-801000-W00	X35N430-800001-W00
4300	RTE35N430-800000-000	RTE35N430-801000-W00	RTE35N430-800001-W00
4500	X35N480-800000-000	X35N480-801000-W00	X35N480-800001-W00
4700	X35N500-800000-000	X35N500-801000-W00	X35N500-800001-W00
4800			
5000	X35U350-800000-000	X35U350-801000-W00	X35U350-800001-W00
5500	RTE35N550-800000-000	RTE35N550-801000-W00	RTE35N550-800001-W00
6000	X35N650-800000-000	X35N650-801000-W00	X35N650-800001-W00
6500	X35N700-800000-000	X35N700-801000-W00	X35N700-800001-W00
7000	RTE35N700-800000-000	2098000123010	RTE35N700-800001-W00
7500	RTE35N750-800000-000	RTE35N750-801000-W00	RTE35N750-800001-W00

图 28 油路系统
Fig.28 Mast piping

2t-3.8t 3级全自由门架 TRIPLEX MAST

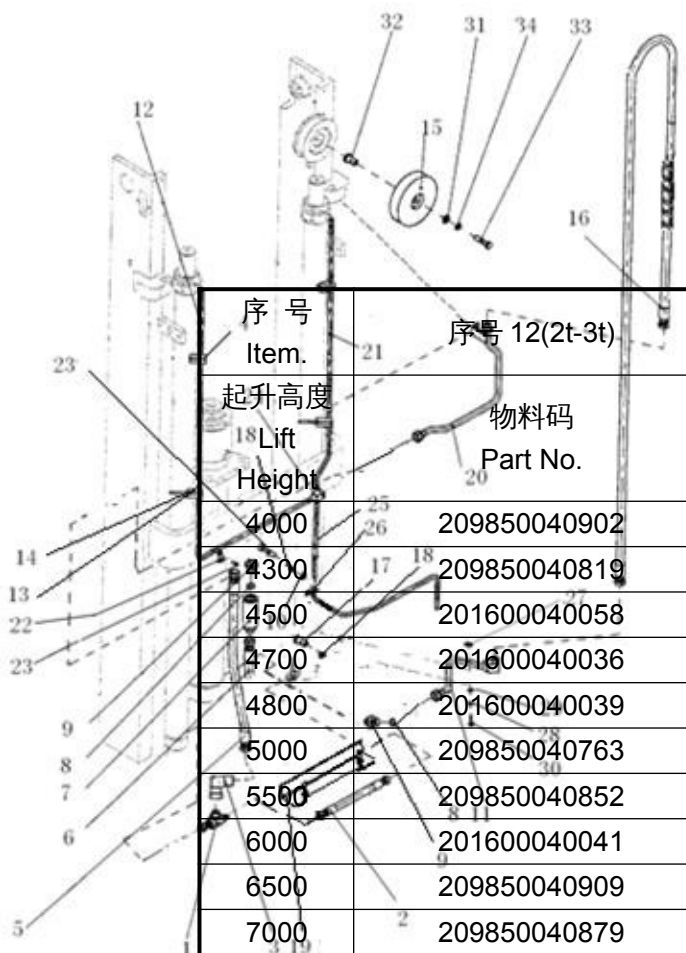
序号 Item	物料码 Part No	名称 Description	数量 Qty	备注或适用车型 Remarks or Serial NO	原物料码 Original Part No
1	209850060169	三通接头	1	2t-2.5t	RC25U300-704000-000
1	209850060087	三通接头	1	3t-3.8t	X30M300-704000-000
2	209850060634	胶管接头	1	2t-2.5t	JGG-10A00430A0-000
2	209990000949	胶管接头	1	3t-3.8t	JGG-13A00405A0-000
3	209850060172	90°管接头	1		RC25N450-201000-000
4	300290010006	喉箍 16	6		JT08870-0160000000-00
5	209850060626	胶管接头	1		JGG-13A00609Z6-000
6	209990000948	油管总成	1		JGG-13A00690Z0-000
7	206200110008	单向限速阀	1	2t-2.5t	XSF2-F16L-2T-G00
7	206200110007	单向限速阀	1	3t-3.8t	XSF2-F16L-3T-G00
8	300130010134	O形密封圈 24×2.4	2		G001235-002402P4-000
9	209850060089	直通管接头	2		X25N450-200001-000

	10	300030040014	垫圈 8	4		G0097P1-000008-00
	11	209850070050	硬管接头	1		XR30N450-201000-000
	12	选配表 18	回油管	1		

图 28 油路系统 Fig.28 Mast piping		2t-3.8t 3级全自由门架 TRIPLEX MAST				
序号 Item	物料码 Part No	名称 Description	数量 Qty	备注或适用车型 Remarks or Serial NO	原物料码 Original Part No	
	13	209850090299	镶边	3		N30M300-700002-000
	14	209990000574	通用尼龙扎带	3		GT-3001-G00
	15	209850050024	滑轮	1		RTE35N450-200009-000
	16	选配表 18	胶管接头	1		
	17	300010040169	螺栓 M8×16	1		G005783-008016-00
	18	300030010015	垫圈 8	3		G000093-000008-00
	19	209850090776	油管护罩 1	1		XR30M300-701001-000
	20	209850070046	钢油管	1		XR30N450-202000-000
	21	选配表 18	回油管	1		
	22	209850080037	管夹	2		S16M300-700003-000
	23	209500270220	螺栓 M8×1.25×16	3		N30M300-003000-000

	24	209850090298	三通接头	1		N30M300-700005-000
	25	209850040775	回油管	1		JGD-095A01600-000
	26	209850080037	管夹	1		S16M300-700003-000
	27	209850090459	垫圈	2		AH35D450-204001-000

图 28 油路系统 Fig.28 Mast piping		2t-3.8t 3级全自由门架 TRIPLEX MAST				
序号 Item	物料码 Part No	名称 Description	数量 Qty	备注或适用车型 Remarks or Serial NO	原物料码 Original Part No	
28	300030010001	垫圈 10	2		G000093-000010-00	
29	300030190001	垫圈 10	2		G000096-000010-00	
30	300040020073	螺钉 M10×20	1		G000070-010020-00	
31	300030040004	垫圈 14	1		G0097P1-000014-00	
32	209850090303	轴套	1		N15N450-200021-000	
33	300010030053	螺栓 M14×55	1		G005782-014055-00	
34	300030010003	垫圈 14	1		G000093-000014-00	



选配表 18-1 <Optional Parts List 18-1>

序号 Item.	序号 12(2t-3t) 物料码 Part No.	序号 12(3.5t-3.8t) 物料码 Part No.	序号 21(2t-3t) 物料码 Part No.	序号 21 (3.5t-3.8t) 物料码 Part No.
起升高度 Lift Height				
4000	209850040902	201600040058	209850040912	201600040059
4300	209850040819	201600040039	209850040834	209850040020
4500	201600040058	209850040763	201600040059	209850040764
4700	201600040036	201600040049	201600040037	201600040051
4800	201600040039	209850040851	209850040020	209850040861
5000	209850040763	209850040852	209850040764	209850040862
5500	209850040852	209850040853	209850040862	209850040863
6000	201600040041	209850040854	209850040838	209850040864
6500	209850040909	209850040855	209850040919	209850040865
7000	209850040879	209850040856	209850040894	209850040866
7500	209850040856	209850040857	209850040866	209850040867

选配表 18-1 <Optional Parts List 18-1>

序号 Item.	序号 12(2t-3t)	序号 12(3.5t-3.8t)	序号 21(2t-3t)	序号 21 (3.5t-3.8t)
起升高度 Lift Height	原物料码 Original Part No.	原物料码 Original Part No.	原物料码 Original Part No.	原物料码 Original Part No.
4000	JGD-095A01030-000	JGD-095A01180-000	JGD-095A00520-000	JGD-095A00670-000
4300	JGD-095A01130-000	JGD-095A01280-000	JGD-095A00620-000	JGD-095A00770-000
4500	JGD-095A01180-000	JGD-095A01330-000	JGD-095A00670-000	JGD-095A00820-000
4700	JGD-095A01230-000	JGD-095A01380-000	JGD-095A00720-000	JGD-095A00870-000
4800	JGD-095A01280-000	JGD-095A01430-000	JGD-095A00770-000	JGD-095A00920-000
5000	JGD-095A01330-000	JGD-095A01480-000	JGD-095A00820-000	JGD-095A00970-000
5500	JGD-095A01480-000	JGD-095A01630-000	JGD-095A00970-000	JGD-095A01120-000
6000	JGD-095A01680-000	JGD-095A01780-000	JGD-095A01170-000	JGD-095A01270-000
6500	JGD-095A01880-000	JGD-095A02030-000	JGD-095A01370-000	JGD-095A01520-000

7000	JGD-095A02080-000	JGD-095A02230-000	JGD-095A01570-000	JGD-095A01720-000
7500	JGD-095A02230-000	JGD-095A02380-000	JGD-095A01720-000	JGD-095A01870-000

选配表 18-2<Optional Parts List 18-2>

序号 Item.	序号 16(2t-2.5t)	序号 16(3t)	序号 16(3.5t-3.8t)
起升高度 Lift Height	物料码 Part No.	物料码 Part No.	物料码 Part No.
4000	209850060943	209850060923	209850060820
4300	209850060944	209990000917	209990000945
4500	209850060633	209990000945	209850060627
4700	209850060945	209850060925	209850060822
4800	209850060946	209850060822	209850060823
5000	209850060947	209850060927	209850060824
5500	209850060948	209850060928	209850060825

6000	209850060949	209850060929	209850060826
6500	209850060950	209850060930	209850060827
7000	209850060951	209850060931	209850060828
7500	209850060952	209850060932	209850060829

选配表 18-2<Optional Parts List 18-2>

序号 Item.	序号 16(2t-2.5t)	序号 16(3t)	序号 16(3.5t-3.8t)
起升高度 Lift Height	原物料码 Original Part No.	原物料码 Original Part No.	原物料码 Original Part No.
4000	JGG-16A02390A1-000	JGG-16A02460A1-000	JGG-16A02560A1-000
4300	JGG-16A02580A1-000	JGG-16A02650A1-000	JGG-16A02750A1-000
4500	JGG-16A02680A1-000	JGG-16A02750A1-000	JGG-16A02850A1-000
4700	JGG-16A02880A1-000	JGG-16A02940A1-000	JGG-16A03040A1-000
4800	JGG-16A02970A1-000	JGG-16A03040A1-000	JGG-16A03140A1-000

5000	JGG-16A03170A1-000	JGG-16A03230A1-000	JGG-16A03330A1-000
5500	JGG-16A03550A1-000	JGG-16A03620A1-000	JGG-16A03720A1-000
6000	JGG-16A04040A1-000	JGG-16A04110A1-000	JGG-16A04200A1-000
6500	JGG-16A04430A1-000	JGG-16A04500A1-000	JGG-16A04690A1-000
7000	JGG-16A04910A1-000	JGG-16A04980A1-000	JGG-16A05170A1-000
7500	JGG-16A05300A1-000	JGG-16A05370A1-000	JGG-16A05560A1-000

图 29 侧移油路 Fig.29 lateral moving circuit	2t-3.8t 3级全自由门架 TRIPLEX MAST					
	序号 Item	物料码 Part NO	名称 Description	数量 Qty	备注或适用车型 Remarks or Serial NO	原物料码 Original Part No
	1	209850090194	滑轮护板	1		RTE35V450-911000-000
	2	300030010015	垫圈 8	7		G000093-000008-00
	3	300040020096	螺钉 M8×16	3		G000070-008016-00

	4	300030040014	垫圈 8	3		G0097P1-000008-00
	5	209850090781	支架	1		XR30V450-912000-000
	6	209850090199	销轴	1		RTE35V450-913000-000
	7	300010040145	螺栓 M6×12	1		G005783-006012-00
	8	300030010014	垫圈 6	1		G000093-000006-00
	9	209850050074	滑轮	2		XR30V450-910001-000
	10	300040020074	螺钉 M10×25	4		G000070-010025-00
	11	300030010001	垫圈 10	4		G000093-000010-00
	12	300030040002	垫圈 10	2		G0097P1-000010-00
	13	209850090198	套	1		RTE35V450-910002-000
	14	选配表 19	胶管接头	2		
	15	选配表 19	胶管接头	2		

图 29 侧移油路 Fig.29 lateral moving circuit	3 级全自由门架 TRIPLEX MAST					
	序号 Item	物料码 Part NO	名称 Description	数量 Qty	备注或适用车型 Remarks or Serial NO	原物料码 Original Part No
	16	209850070360	钢油管	1		RTE35V450-931000-000
	17	209850060342	直通过接头 Nipple	1		A30N800-900005-000

	18	300130010089	O形密封圈 22×2.4	2		G001235-002202P4-00
	19	209850060607	胶管接头	1		JGG-10B01120Z0-000
	20	209850060608	胶管接头	1		JGG-10B01050Z0-000
	21	209850060343	直通过接头	1		A30N800-900006-000
	22	209850071498	钢油管	1		XR30V450-941000-000
	23	209850060338	90°管接头	2		AH35B300-904000-000
	24	209990000931	胶管接头	1	2t-2.5t	JGG-10B00375A0-000
	24	209990000915	胶管接头	1	3t-3.8t	JGG-10B00460A0-000
	25	209990000932	胶管接头	1	2t-2.5t	JGG-10B00650Z0-000
	25	209990000916	胶管接头	1	3t-3.8t	JGG-10B00690Z0-000
	26	209850020069	接头支座	1		AH35W450-902000-000
	27	300040020098	螺钉 M8×25	2		G000070-008025-00
	28	300040020102	螺钉 M8×40	1		G000070-008040-00

图 29 侧移油路 Fig.29 lateral moving circuit	3级全自由门架 TRIPLEX MAST					
	序号 Item	物料码 Part NO	名称 Description	数量 Qty	备注或适用车型 Remarks or Serial NO	原物料码 Original Part No
	29	206500040044	盖板	1		RT500-650006-000

	30	310040040143	管夹	1		BT425M390-700005-000
	31	300040020097	螺钉 M8×20	2		G000070-008020-00
	32	209850070377	支板	1		RTE35V450-921000-000
	33	209850090303	轴套	1		N15N450-200021-000
	34	209850050022	滑轮	1		RTE35V450-950001-000
	35	300030040004	垫圈 14	1		G0097P1-000014-00
	36	300030010003	垫圈 14	1		G000093-000014-00
	37	300010040060	螺栓 M14×55	1		G005783-014055-00

选配表 19 <Optional Parts List 19>

序号 Item	14	15 (2t-2.5t)	15 (3t)	15 (3.5t-3.8t)
------------	----	--------------	---------	----------------

起升高度 Lift Height	物料码 Part No.	物料码 Part No.	物料码 Part No.	物料码 Part No.
4000	209850060830	209850061163	209850061149	209850060850
4300	209850060832	209850061164	209850061150	209850060621
4500	209850060640	209850060637	209850060621	209850060630
4700	209850060833	209850061165	209850061151	209850060852
4800		209850061166	209850060852	209850060853
5000	209850060834	209850060663	209850061153	209850060854
5500	209850060835	209850061168	209850061154	209850060855
6000	209850060836	209850061169	209850061155	209850060856
6500	209850060837	209850061170	209850061156	209850060857
7000	209850060838	209850061171	209850060769	209850060858
7500	209850060839	209850061172	209850061158	209850060859

选配表 19 <Optional Parts List 19>

序号 Item	14	15 (2t-2.5t)	15 (3t)	15 (3.5t-3.8t)
起升高度 Lift Height	原物料码 Original Part No.	原物料码 Original Part No.	原物料码 Original Part No.	原物料码 Original Part No.
4000	JGG-10B01940A0-000	JGG-10B02480A0-000	JGG-10B02550A0-000	JGG-10B02640A0-000
4300	JGG-10B02030A0-000	JGG-10B02670A0-000	JGG-10B02740A0-000	JGG-10B02840A0-000
4500	JGG-10B02130A0-000	JGG-10B02770A0-000	JGG-10B02840A0-000	JGG-10B02940A0-000
4700	JGG-10B02230A0-000	JGG-10B02970A0-000	JGG-10B03040A0-000	JGG-10B03140A0-000
4800		JGG-10B03070A0-000	JGG-10B03140A0-000	JGG-10B03230A0-000
5000	JGG-10B02320A0-000	JGG-10B03260A0-000	JGG-10B03330A0-000	JGG-10B03430A0-000
5500	JGG-10B02520A0-000	JGG-10B03660A0-000	JGG-10B03730A0-000	JGG-10B03830A0-000
6000	JGG-10B02710A0-000	JGG-10B04150A0-000	JGG-10B04220A0-000	JGG-10B04320A0-000
6500	JGG-10B02910A0-000	JGG-10B04540A0-000	JGG-10B04610A0-000	JGG-10B04810A0-000
7000	JGG-10B03000A0-000	JGG-10B05040A0-000	JGG-10B05110A0-000	JGG-10B05300A0-000
7500	JGG-10B03200A0-000	JGG-10B05430A0-000	JGG-10B05500A0-000	JGG-10B05700A0-000

图 30 第四联油路
Fig.30 Fourth oil

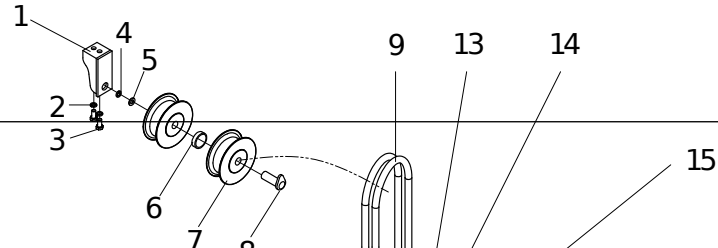
3 级全自由门架 TRIPLEX MAST

序号 Item	物料码 Part NO	名称 Description	数量 Qty	备注或适用车型 Remarks or Serial NO	原物料码 Original Part No
1	209850090457	支架 Bracket	1		AH35W450-921000-000
2	300030010001	垫圈 10	4		G000093-000010-00
3	300010040005	螺栓 M10×20	2		G005783-010020-00
4	300030010003	垫圈 14 Washer 14	1		G000093-000014-00
5	209850050034	垫圈	1		J25B300-900005-000
6	209850090461	隔套	1		AH35B300-900007-000
7	209850020062	滑轮	2		J30B300-900006-001
8	209850090463	滑轮轴	1		AH35B300-900006-000
9	选配表 20	胶管接头	2		
10	300040020102	螺钉 M8×40	2		G000070-008040-00
11	206500040044	盖板	2		RT500-650006-000
12	310040040143	管夹	2		BT425M390-700005-000

	13	300040020097	螺钉 M8×20	2		G000070-008020-00
	14	300030010015	垫圈 8	6		G000093-000008-00
	15	209850070376	支板	1		RTE35V450-821000-000

图 30 第四联油路 Fig.30 Fourth oil		3 级全自由门架 TRIPLEX MAST				
序号 Item	物料码 Part NO	名称 Description	数量 Qty	备注或适用车型 Remarks or Serial NO	原物料码 Original Part No	
16	209850090193	垫片	1		RTE35V450-820001-000	
17	209850070365	钢油管	1		RTE35V450-830000-000	
18	300130010089	O 形密封圈 22×2.4	2		G001235-002202P4-00	
19	209850060604	胶管接头	1		JGG-10B00800Z0-000	
20	209850060605	胶管接头	1		JGG-10B00730Z0-000	
21	209850060343	直通接头	1		A30N800-900006-000	
22	209850060342	直通接头	1		A30N800-900005-000	
23	300040020096	螺钉 M8×16	2		G000070-008016-00	
24	选配表 20	胶管接头	2			
25	209850071497	钢油管	1		XR30V450-841000-000	
26	300010040009	螺栓 M10×25	2		G005783-010025-00	

	27	209850090453	闷盖	2		AH35W450-805000-000
	28	300040020097	螺钉 M8×25	2		G000070-008020-00
	29	209850020030	接头支座	1		RTE35V450-802000-000



选配表 20 <Optional Parts List 20 >

12 序号 11 Item	10 起升高度 Lift Height	16	9 (3t)	9 (3.5t-3.8t)	24
		17 物料码 Part No.	17 物料码 Part No.	17 物料码 Part No.	17 物料码 Part No.
	4000	209850061173	209850060933	209850060840	209850060830
	4300	209850061174	209850060934	209990000928	209850060832
	4500	209850060626	209990000928	209850060629	209990000929
	4700	209850061175	209850060838	209990000913	209850060833
	4800	209850061176	209990000913	209850060843	
	5500	209850060853	209850060937	209850060844	209850060834
	6000	209850061178	209850060938	209850060845	209850060835
	6500	209850061179	209850060939	209850060846	209850060836
24	7000	209850061180	209850060940	209850060847	209850060837
27	7500	209850061181	209850060941	209850060848	209850060838
28		209850061182	209850060942	209850060849	209850060839

此处参照侧移油路，并增加4支滑轮
See lateral moving circuit; increase four pulleys

选配表 20 <Optional Parts List 20 >

序号 Item	9 (2t-2.5t)	9 (3t)	9 (3.5t-3.8t)	24
起升高度 Lift Height	原物料码 Original Part No.	原物料码 Original Part No.	原物料码 Original Part No.	原物料码 Original Part No.
4000	JGG-10B02440A0-000	JGG-10B02510A0-000	JGG-10B02600A0-000	JGG-10B01940A0-000
4300	JGG-10B02630A0-000	JGG-10B02700A0-000	JGG-10B02800A0-000	JGG-10B02030A0-000
4500	JGG-10B02730A0-000	JGG-10B02800A0-000	JGG-10B02900A0-000	JGG-10B02290A0-000
4700	JGG-10B02930A0-000	JGG-10B03000A0-000	JGG-10B03100A0-000	JGG-10B02230A0-000
4800	JGG-10B03030A0-000	JGG-10B03100A0-000	JGG-10B03190A0-000	
5000	JGG-10B03230A0-000	JGG-10B03290A0-000	JGG-10B03390A0-000	JGG-10B02320A0-000
5500	JGG-10B03620A0-000	JGG-10B03690A0-000	JGG-10B03790A0-000	JGG-10B02520A0-000
6000	JGG-10B04110A0-000	JGG-10B04180A0-000	JGG-10B04280A0-000	JGG-10B02710A0-000
6500	JGG-10B04510A0-000	JGG-10B04570A0-000	JGG-10B04770A0-000	JGG-10B02910A0-000
7000	JGG-10B05000A0-000	JGG-10B05070A0-000	JGG-10B05260A0-000	JGG-10B03000A0-000
7500	JGG-10B05390A0-000	JGG-10B05460A0-000	JGG-10B05660A0-000	JGG-10B03200A0-000

