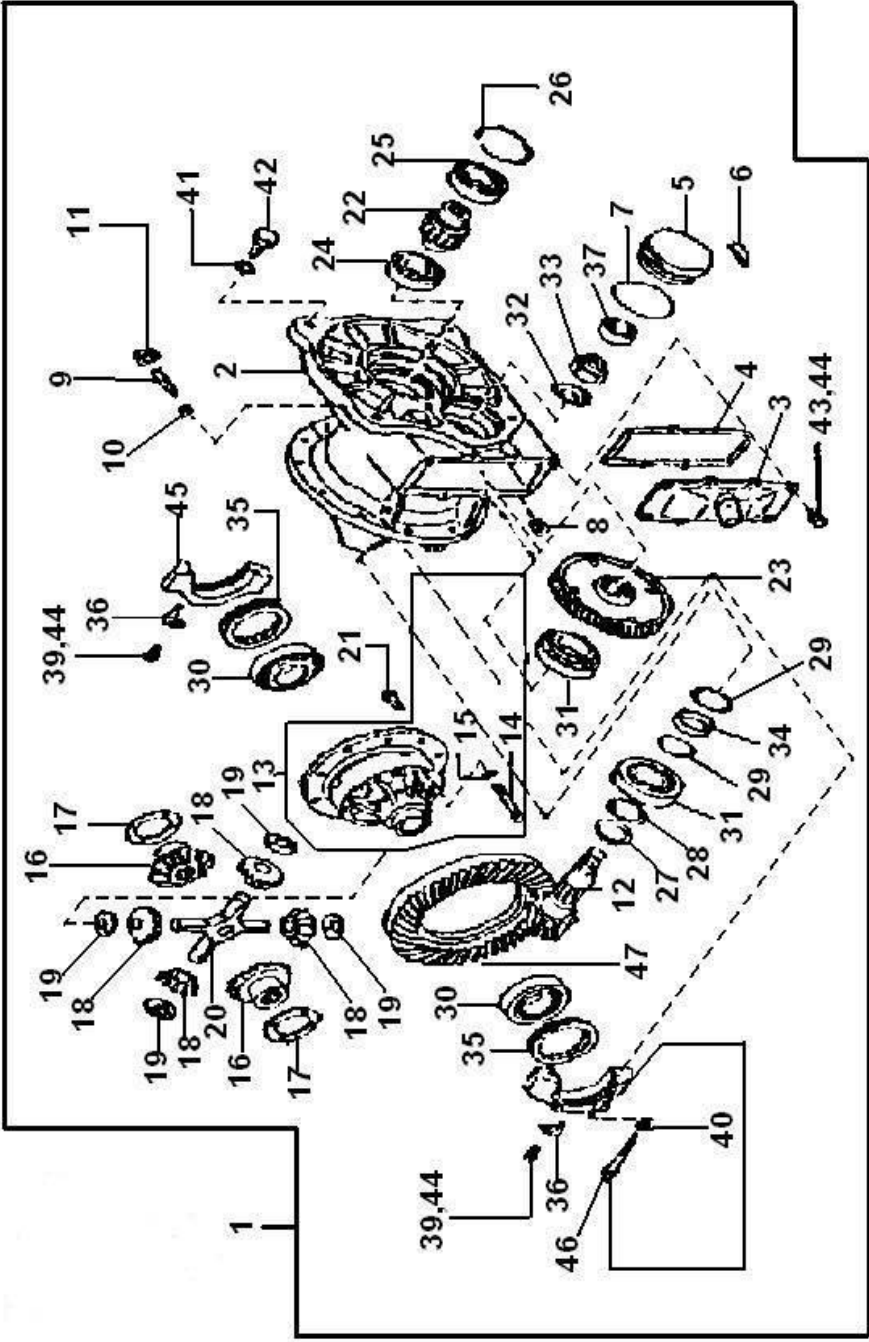


01 底盘部分

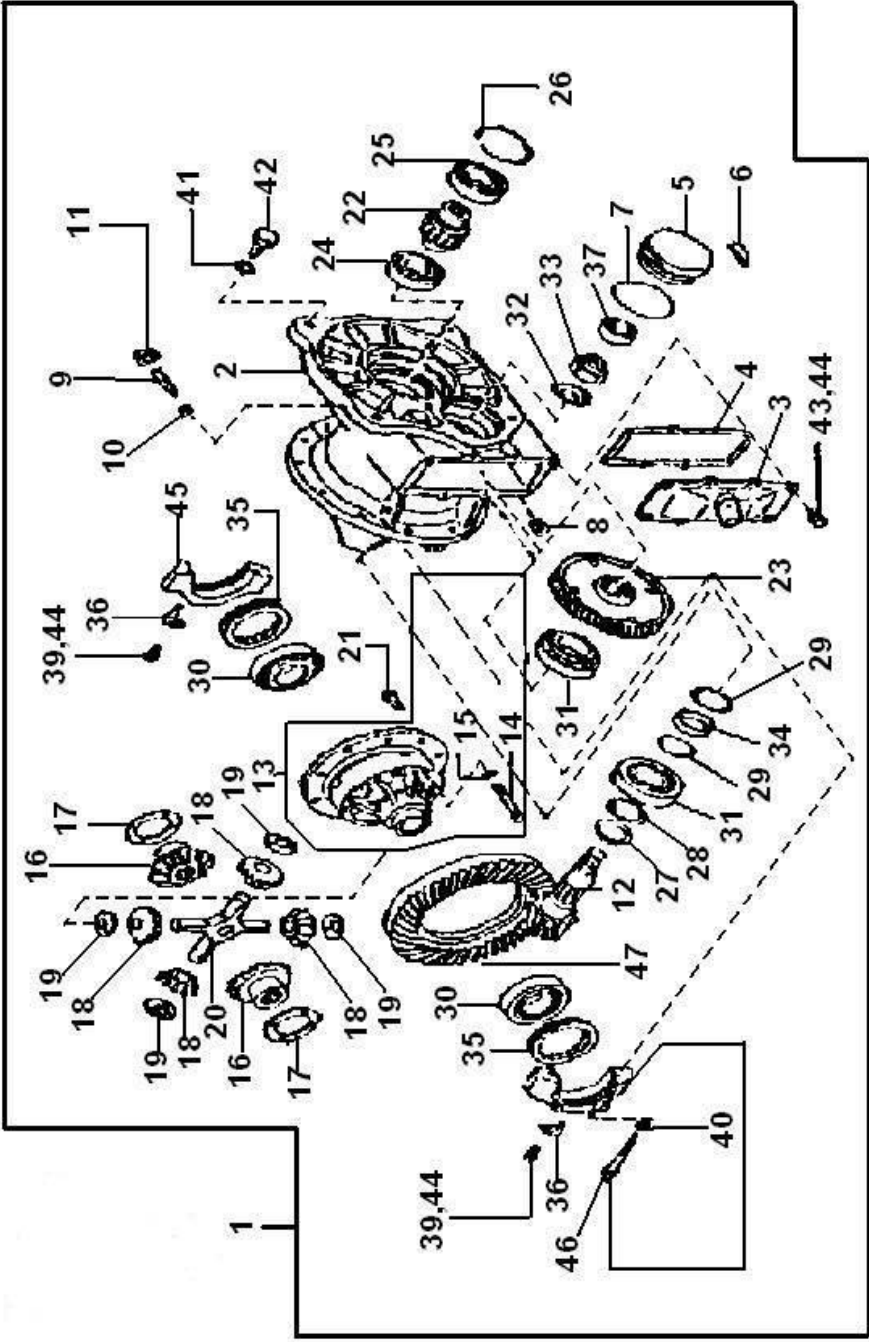
01-01 减速器总成
FINAL DRIVE ASSEMBLY



01-01 减速器总成
FINAL DRIVE ASSEMBLY

序号 NO.	零件图号 Part NO.	零件名称 Description	数量 Q'ty
1	38300-2K410	减速器总成 FINAL DRIVE ASSY	1
2	38310-45H01	减速器壳体 CARR ASSY-GEAR	1
3	38351-2K000	侧盖 COVER-GEAR CARR	1
4	38353-45H00	垫 GSKT-UPR, COVER	1
5	38341-32H00	轴承盖 COVER PINION, DRIVE	1
6	GB1099-79	键 6×25 KEY 6×25	1
7	GB1235-76	O形密封圈 100×3.1 O-RING 100×3.1	1
8	TB/ZQ4446-1986	螺塞 PLUG-DRAIN	1
9	38105-11H01	支撑轴 SUPPORT-RING GEAR	1
10	38106-11H00	止推块 PIECE-THRUST	1
11	E08911-3241A	螺母 NUT	1
12	38112-31H00	主动锥齿轮 PINION-DRIVE HYP	1
13	38420-11H02	差速器壳体总成 CASE ASSY-DIFFERENTIAL	1
14	38429-L3000	螺栓 BOLT	8
15	GB93	垫圈 10 WASHER SPRING 10	8
16	38423-82420	半轴齿轮 GEAR-SIDE, DIFF BEVER	2
17	38424-61500	垫 WASHER-THRUST, SIDE GEAR	2组
18	38425--61500	差速齿轮 PINION-MATE, DIFF BEVEL	4
19	38426-61500	差速齿轮垫 WASHER-THRUST, PINION MATE	4
20	38427-61501	差速齿轮轴 SHAFT-PINION MATE	1
21	38102-00H00	螺栓 BOLT	10

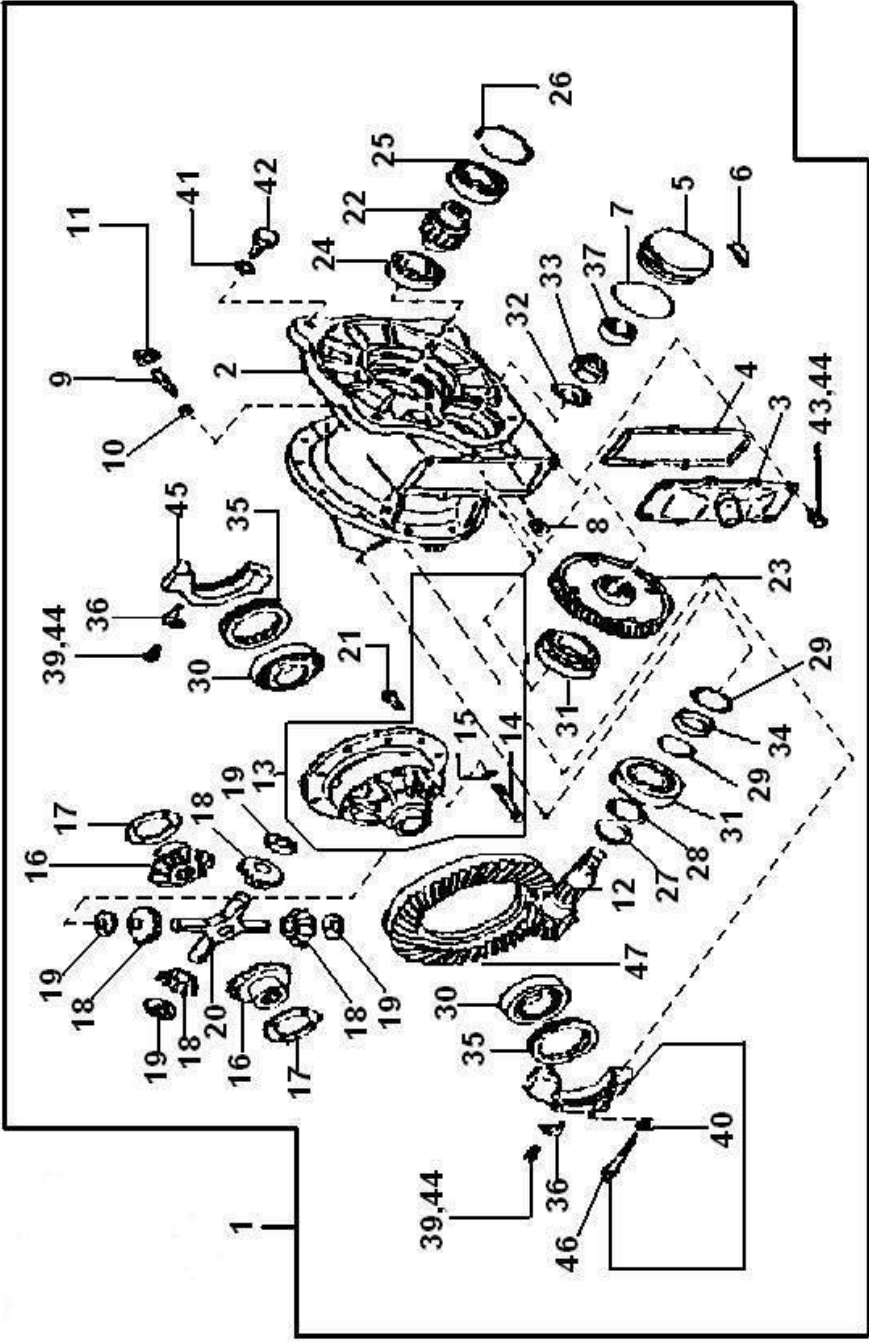
01-01 减速器总成
FINAL DRIVE ASSEMBLY



01-01 减速器总成
FINAL DRIVE ASSEMBLY

序号 NO.	零件图号 Part NO.	零件名称 Description	数量 Q'ty
22	25RC2200001	小齿轮 PINION-INPUT	1
23	38613-2K410	大齿轮 GEAR-REDUCTION	1
24	GB/T276	滚动轴承 6208 BEARING-BALL 6208	1
25	GB/T276	滚动轴承 6209 BEARING-BALL 6209	1
26	GB893.1	挡圈 85 RING-SNAP 85	1
27	15RA2200008	调整垫圈 WASHER- SIDE BEARING	1
28	38127-45H00	调整垫 SHIM-ADJUST, BEARING	1 组
29	38127-L4000	调整垫 SHIM-ADJUSTING, BEARING	1 组
30	GB/T297	滚动轴承 32211 BEARING-BALL 32211	2
31	GB/T297	滚动轴承 30309 BEARING-BALL 30309	2
32	15RA2200013	锁圈 WASHER-LOCK	1
33	15RA2200014	锁紧螺母 NUT-LOCK	1
34	32139-46H00	隔套 PIECE-DISTANCE BEARING	1
35	38316-82100	调整螺母 NUT-SIDE BEARING	2
36	38319-82100	止退垫 ROD-TENSION	2
37	GB/T283	滚动轴承 NJ305E BEARING-BALL NJ305E	1
39	GB5783	螺栓 M8×16 BOLT M8×16	2
40	GB93	垫圈 12 WASHER SPRING 12	4
41	GB93	垫圈 16 WASHER SPRING 16	4
42	50L5300003	螺栓 BOLT	4
43	GB5783	螺栓 M8×20 BOLT M8×20	8

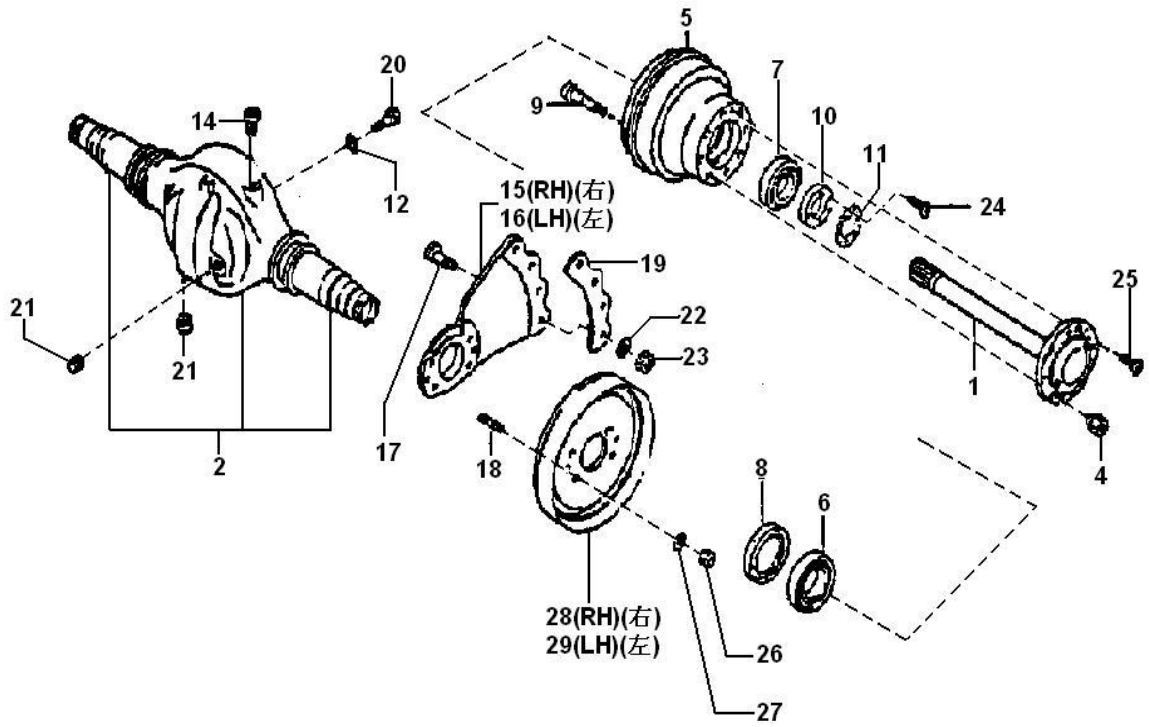
01-01 减速器总成
FINAL DRIVE ASSEMBLY



01-01 减速器总成
FINAL DRIVE ASSEMBLY

序号 NO.	零件图号 Part NO.	零件名称 Description	数量 Q'ty
44	GB93	垫圈 8 WASHER SPRING 8	10
45	38312-11H00	轴承盖 CAP-BRG,DIFF	2
46	38314-82100	螺栓 BOLT	4
47	38101-01H02	主减速器从动齿轮 GEAR-RING,HYPOID	1

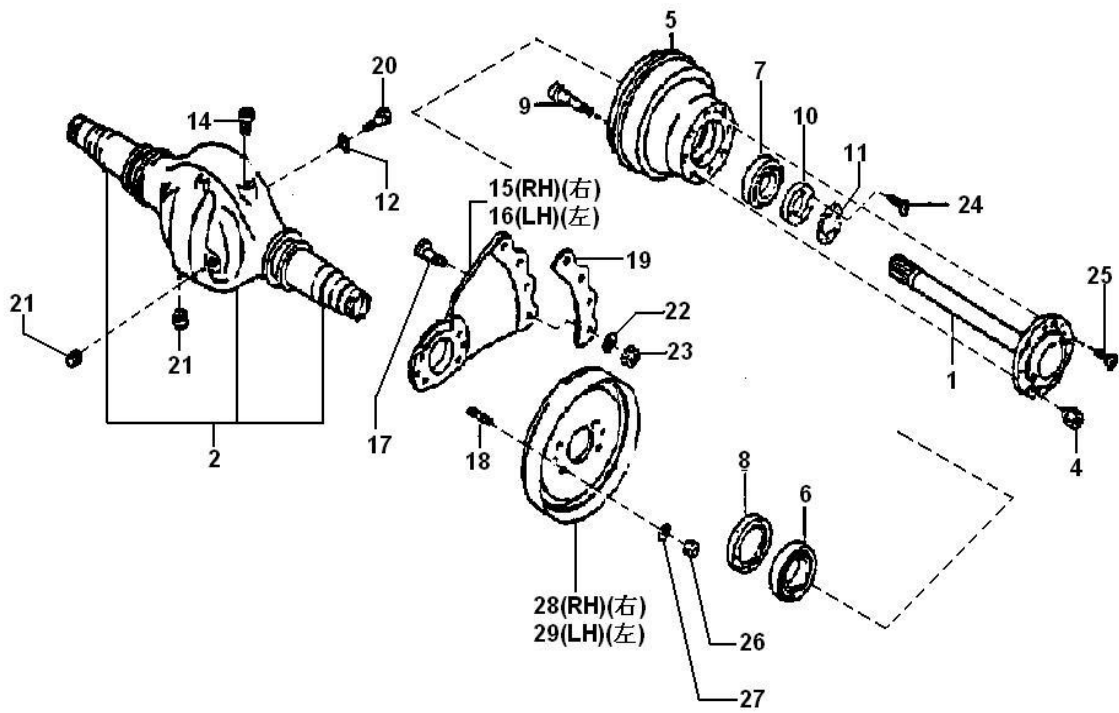
01-02 驱动桥
DRIVE AXLE



01-02 驱动桥
DRIVE AXLE

序号 NO.	零件图号 Part NO.	零件名称 Description	数量 Q'ty
1	E38164-11H00	半轴 SHAFT-DRIVE AXLE	2
2	43010-11H00	驱动桥壳体总成 DRIVE AXLE HOUSING & TUBE ASSY	1
4	E43224-T5400	轮毂螺母 NUT-ROAD WHEEL	16
5	E43204-11H01	轮毂 HUB-DRIVE AXLE	2
6	GB/T297	滚动轴承 32013 BEARING-BALL 32013	2
7	GB/T297	滚动轴承 30211 BEARING-BALL 30211	2
8	GB9877.1	密封圈 FB75×100×10 SEAL-DUST FB75×100×10	2
9	E43225-11H00	轮毂螺栓 BOLT-HUB	16
10	43231-T8000	锁紧螺母 NUT-LOCK	2
11	43234-T8000	锁片 WASHER-LOCK	2
12	GB93	垫圈 8 WASHER SPRING 8	12
14	100X2160000	通气装置 BREATHER ASSY	1
15	43080-11H01	右连接板 BRACKET-DRIVE AXLE MTG RH	1
16	43081-11H01	左连接板 BRACKET-DRIVE AXLE MTG LH	1
17	43027-11H00	螺栓 BOLT	8
18	E44074-11H01	双头螺栓 STUD	12
19	43070-11H05	调整垫 SPACER-REAR AXLE BEARING	1
20	E08170-8351A	螺栓 BOLT	12
21	JB/ZQ4446	螺塞 R1/2 PLUG R1/2	2

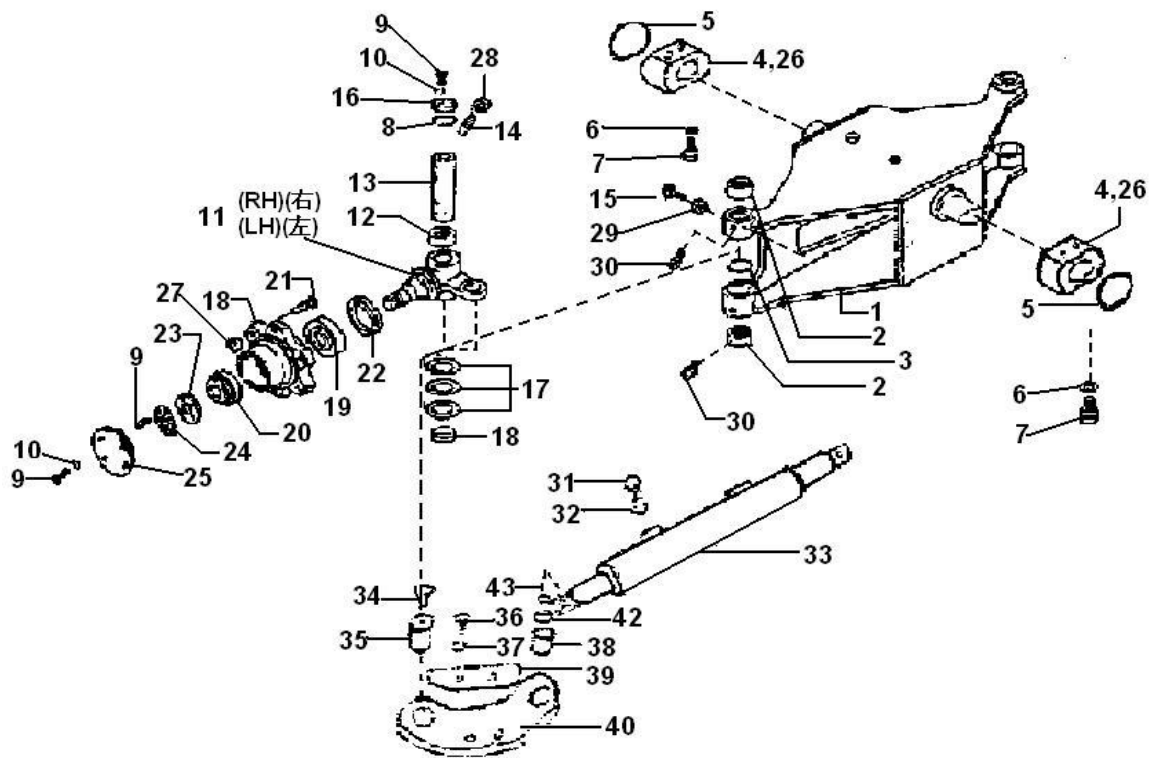
01-02 驱动桥 DRIVE AXLE



01-02 驱动桥
DRIVE AXLE

序号 NO.	零件图号 Part NO.	零件名称 Description	数量 Q'ty
22	GB93	垫圈 18 WASHER SPRING 18	8
23	E08915-2481A	螺母 NUT	8
24	GB818	螺钉 M6×12 SCREW M6×12	4
25	GB68	螺钉 M8×20 SCREW M8×20	2
26	E08911-2441A	螺母 NUT	12
27	GB93	垫圈 14 WASHER SPRING 14	12
28	44010-2K410	左制动器总成 BRAKE ASSY(LH)	1
29	44000-2K410	右制动器总成 BRAKE ASSY(RH)	1

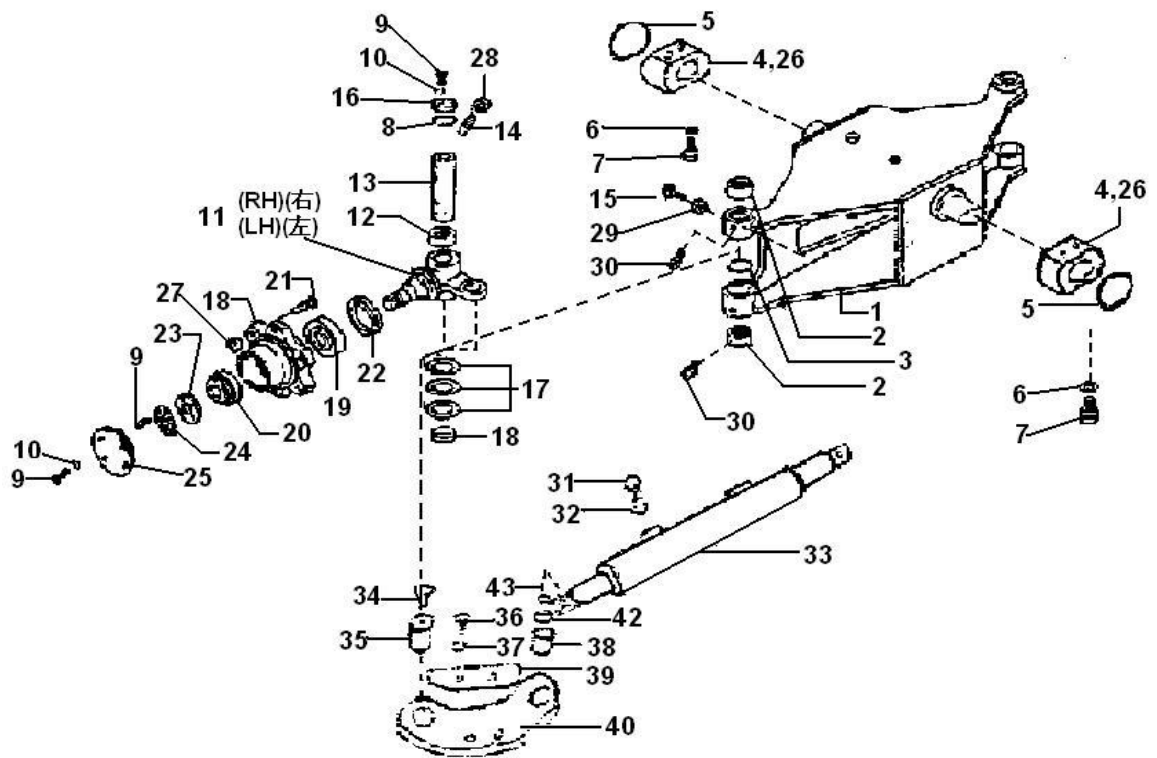
01-03 转向桥 STEERING AXLE



01-03 转向桥
STEERING AXLE

序号 NO.	零件图号 Part NO.	零件名称 Description	数量 Q'ty
1	25RC4110000	转向桥体 AXLE CENTER COMPL-STEERING	1
2	GB290	滚动轴承 HK303720 BEARING-BALL HK303720	4
3	GB3452.1-82	O 形圈 30×3.55 O-RING 30×3.55	2
4	25RC4160000	支承座总成 RUBBER-MOUNTING	2
5	25RC4100002	调整垫片 SHIM-MOUNTING RUBBER	2 组
6	GB93	垫圈 18 WASHER SPRING 18	4
7	GB5785	螺栓 M18×1.5×80 BOLT M18×1.5×80	4
8	E40040-11H03	垫 SHIM	4
9	GB818	螺钉 M6×10 SCREW M6×10	20
10	GB93	垫圈 6 WASHER SPRING 6	16
11	25RC4140000	左转向节 SPINDLE-STEERING LH	1
	25RC4150000	右转向节 SPINDLE-STEERING RH	1
12		单向推力球轴承 98906 BEARING-THRUST 98906	2
13	40022-11H00	转向主销 PIN-KING	2
14	40023-L1100	定位螺栓 SCREW-SET	2
15	GB5786	螺栓 M12×1.5×35 BOLT M12×1.5×35	2
16	E40040-11H02	防尘盖 PLUG ASSY-KNUCKLE SPINDLE	4
17	40032-L1100	调整垫 SHIM-SPINDLE	6
18	40204-45H01	轮毂 HUB-STEERING WHEEL	2
19	GB/T297	滚动轴承 32210 BEARING-BALL 32210	2
20	GB/T297	滚动轴承 32208 BEARING-BALL 32208	2

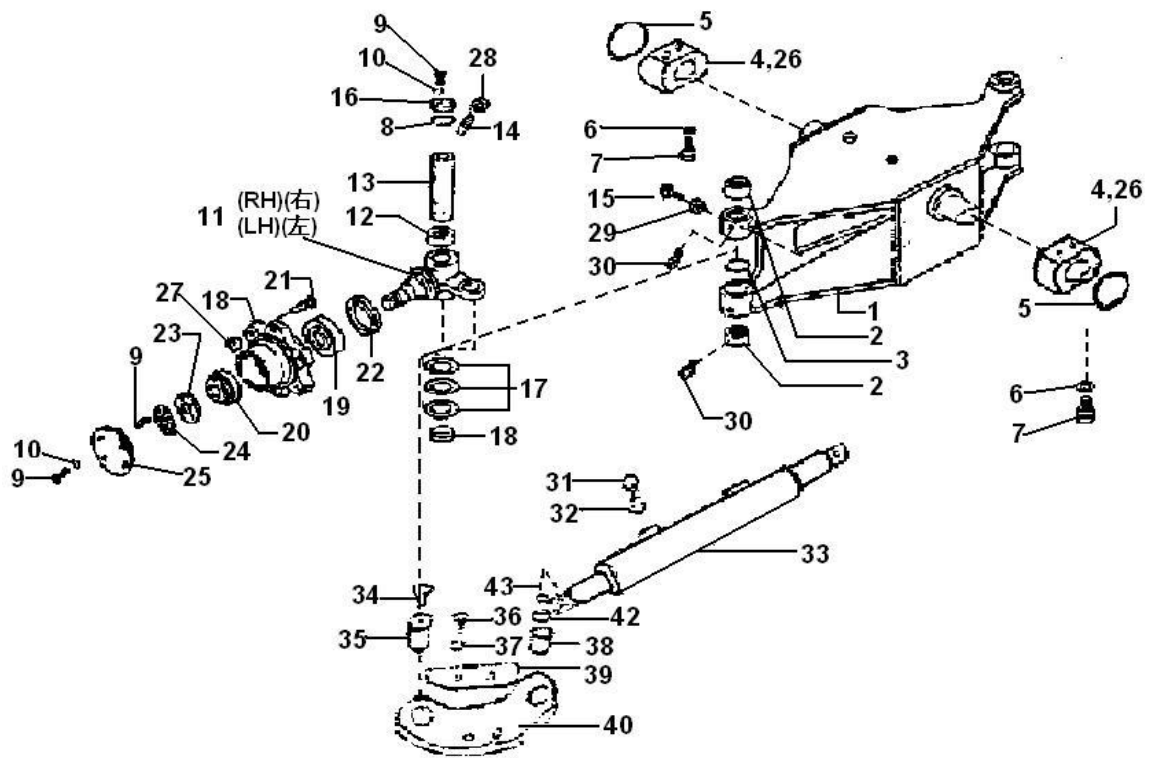
01-03 转向桥 STEERING AXLE



01-03 转向桥
STEERING AXLE

序号 NO.	零件图号 Part NO.	零件名称 Description	数量 Q'ty
21	40222-14H00	轮毂螺栓 BOLT-HUB	10
22	GB9877.1	密封圈 B65×95×10 SEAL-GREASE B65×95×10	2
23	40262-L6000	锁紧螺母 NUT-LOCK	2
24	40264-L6000	锁片 WASHER-LOCK	2
25	E40292-L1100	轮毂端盖 CAP-HUB	2
26	DF3304-10000	油杯 1/8 NIPPLE 1/8	2
27	40224-0T005	轮毂螺母 NUT-HUB	10
28	GB6171	螺母 M10×1.25 NUT M10×1.25	2
29	GB6173	螺母 M12×1.5 NUT M12×1.5	2
30	JB/T7940.1	油杯 M10×1 NIPPLE M10×1	4
31	25RC4100003	螺栓 BOLT	4
32	GB93	垫圈 16 WASHER SPRING 16	4
33	25RC4130000	转向油缸 CYLINDER-SPRING	1
34	D05541-12600	油杯 45°G1/4-24 NIPPLE 45°G1/4-24	4
35	4QE4100002	销轴 SHAFT-PIN	2
36	GB5781	螺栓 M8×16 BOLT M8×16	4
37	GB93	垫圈 8 WASHER SPRING 8	4
38	25Q4100008	连板销轴 SHAFT-PIN	2
39	25RC4100001	锁板 PLATE-LOCK	4
40	25RC4120000	连板总成 PLATE ASSY	2

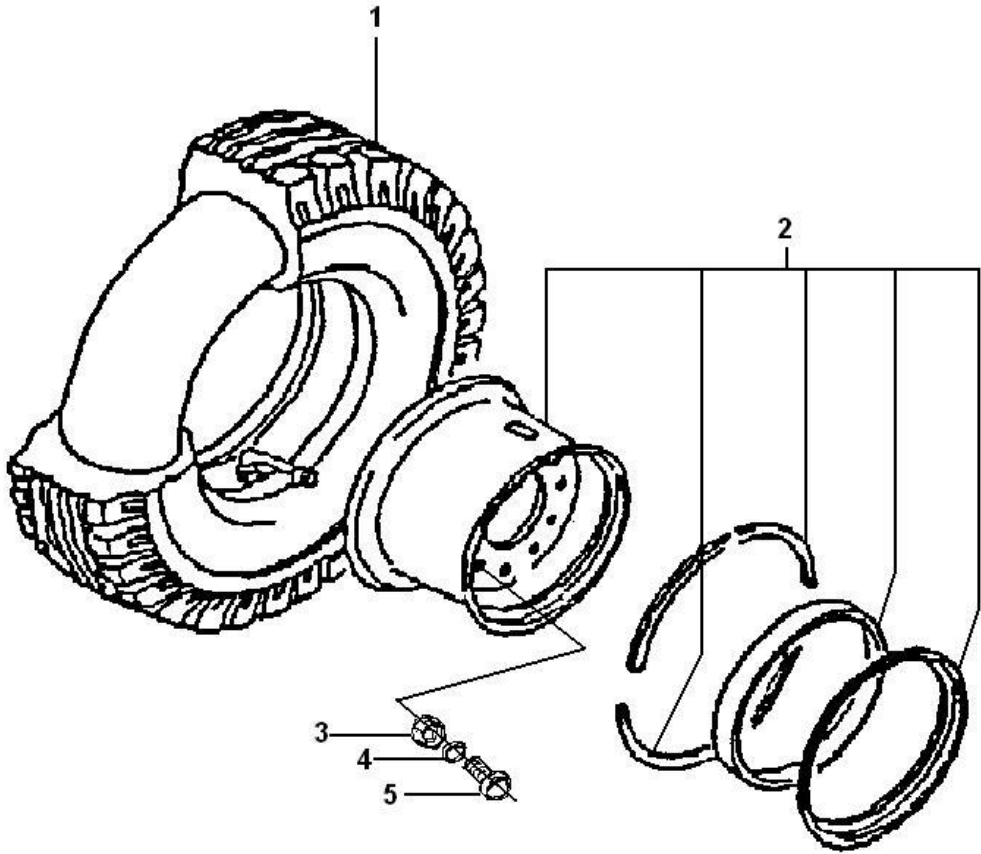
01-03 转向桥 STEERING AXLE



01-03 转向桥
STEERING AXLE

序号 NO.	零件图号 Part NO.	零件名称 Description	数量 Q'ty
42	GB9163	关节轴承 GE15ES-2RS BEARING GE15ES-2RS	2
43	25Q4100015	隔套	2

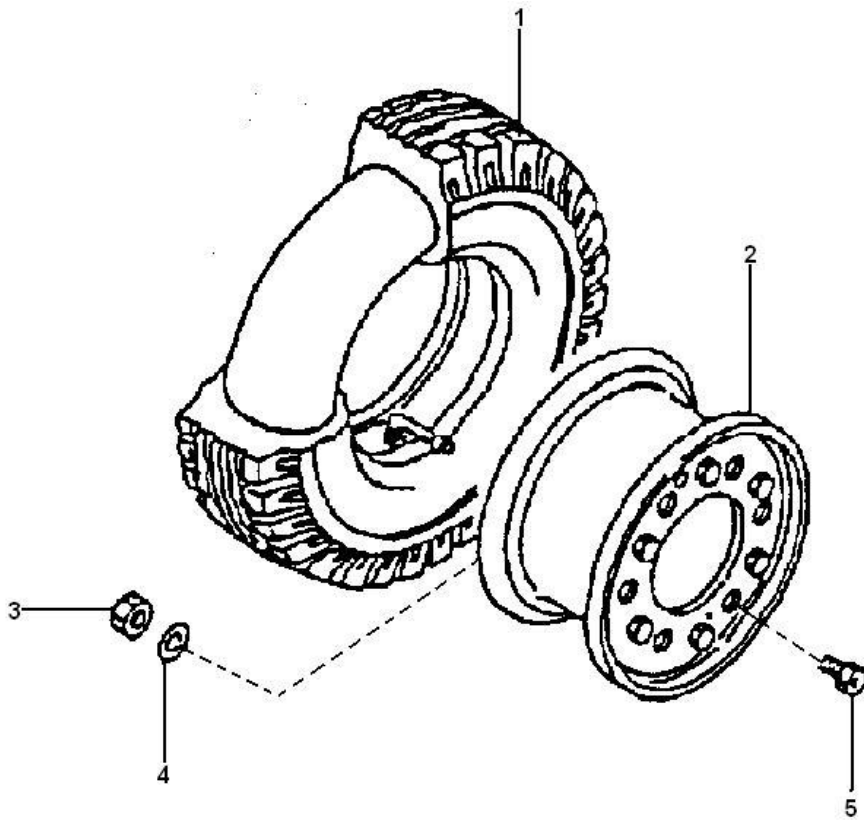
01-04 驱动车轮总成
ROAD WHEEL & TIRE-DRIVING



01-04 驱动车轮总成
ROAD WHEEL & TIRE-DRIVING

序号 NO.	零件图号 Part NO.	零件名称 Description	数量 Q'ty
1		轮胎 23×9-10-16PR TIRE & TUBE SET 23×9-10-16PR	2
2	6.50F-10	车轮总成 RIM SET-DISC WHEEL	2
3	GB6171	螺母 M12×1.5 NUT M12×1.5	14
4	GB93	垫圈 12 WASHER SPRING 12	14
5	GB5786	螺栓 M12×1.5×30 BOLT M12×1.5×30	14

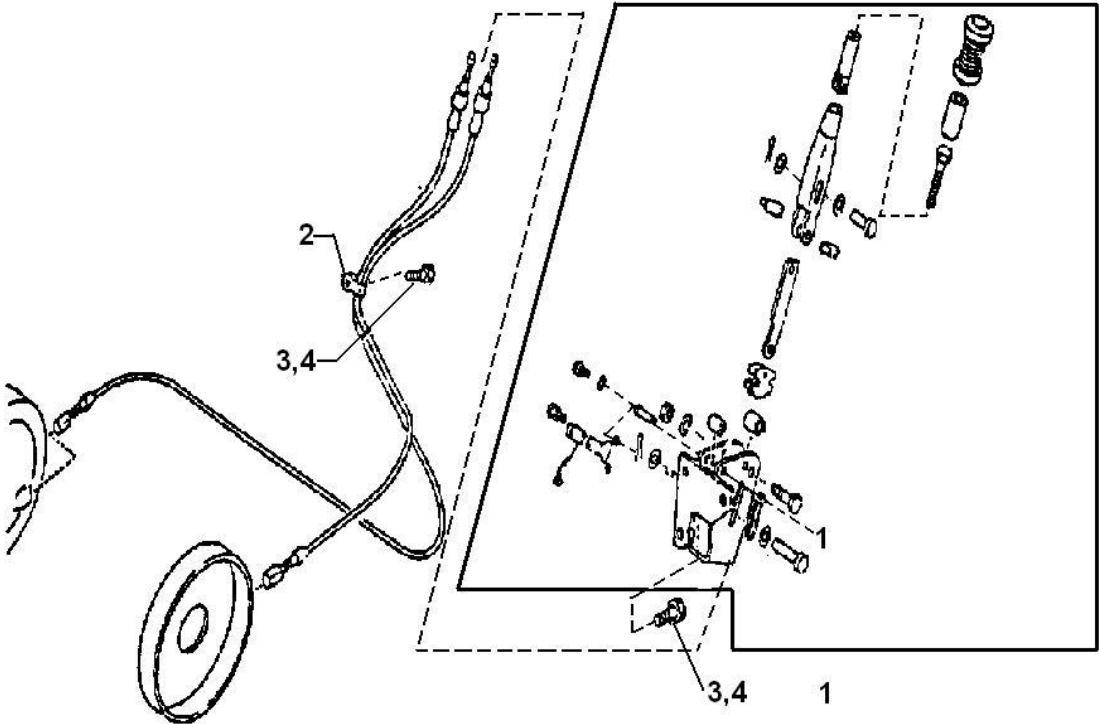
01-05 转向车轮总成
ROAD WHEEL & TIRE-STEERING



01-05 转向车轮总成
ROAD WHEEL & TIRE-STEERING

序号 NO.	零件图号 Part NO.	零件名称 Description	数量 Q'ty
1		轮胎 18×7-8-14PR TIRE & TUBE SET 18×7-8-14PR	2
2	40300-L8009	轮辋 RIM SET-DISC WHEEL	2
3	E08911-2441A	螺母 NUT	10
4	GB93	垫圈 14 WASHER SPRING 14	10
5	E08174-4301A	螺栓 BOLT	10

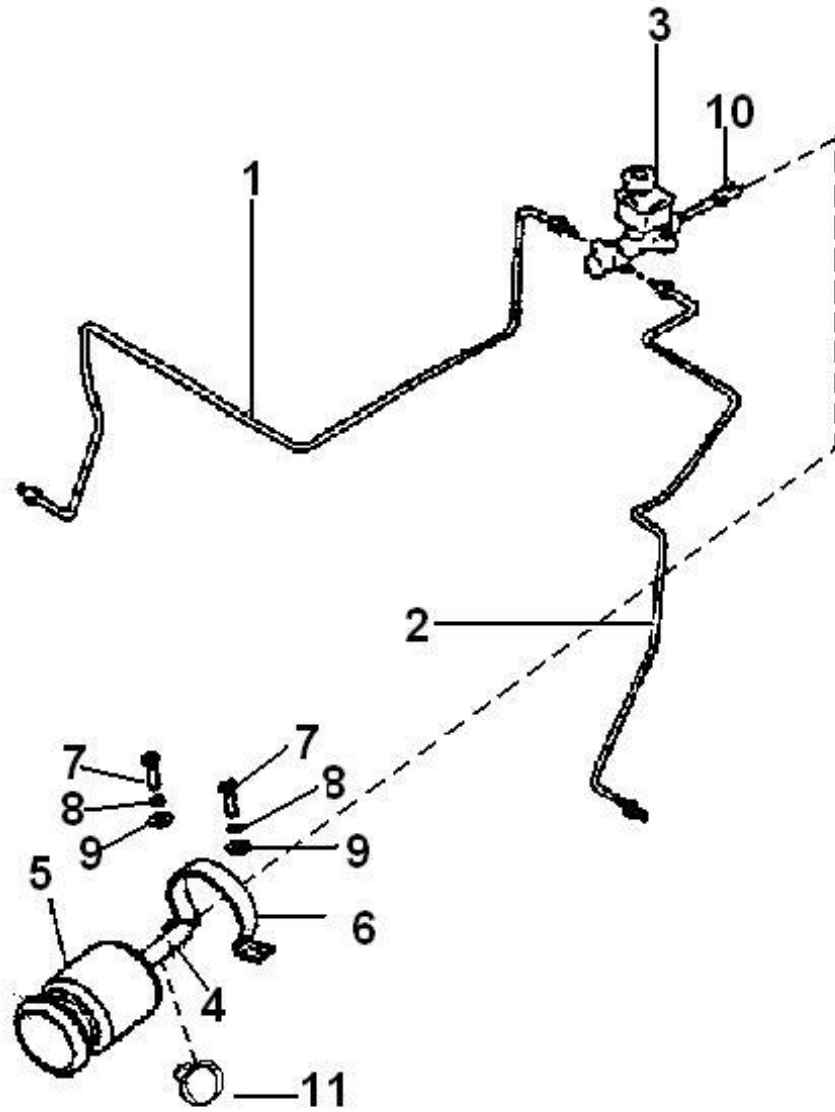
01-06 手制动操纵
PARKING BRAKE CONTROL



01-06 手制动操纵
PARKING BRAKE CONTROL

序号 NO.	零件图号 Part NO.	零件名称 Description	数量 Q'ty
1	36010-41H02	手制动器 DEVICE ASSY-PARKING BRAKE	1
2	46289-89976	线夹 CLAMP	1
3	GB5781	螺栓 M8×16 BOLT M8×16	4
4	GB93	垫圈 8 WASHER SPRING 8	4

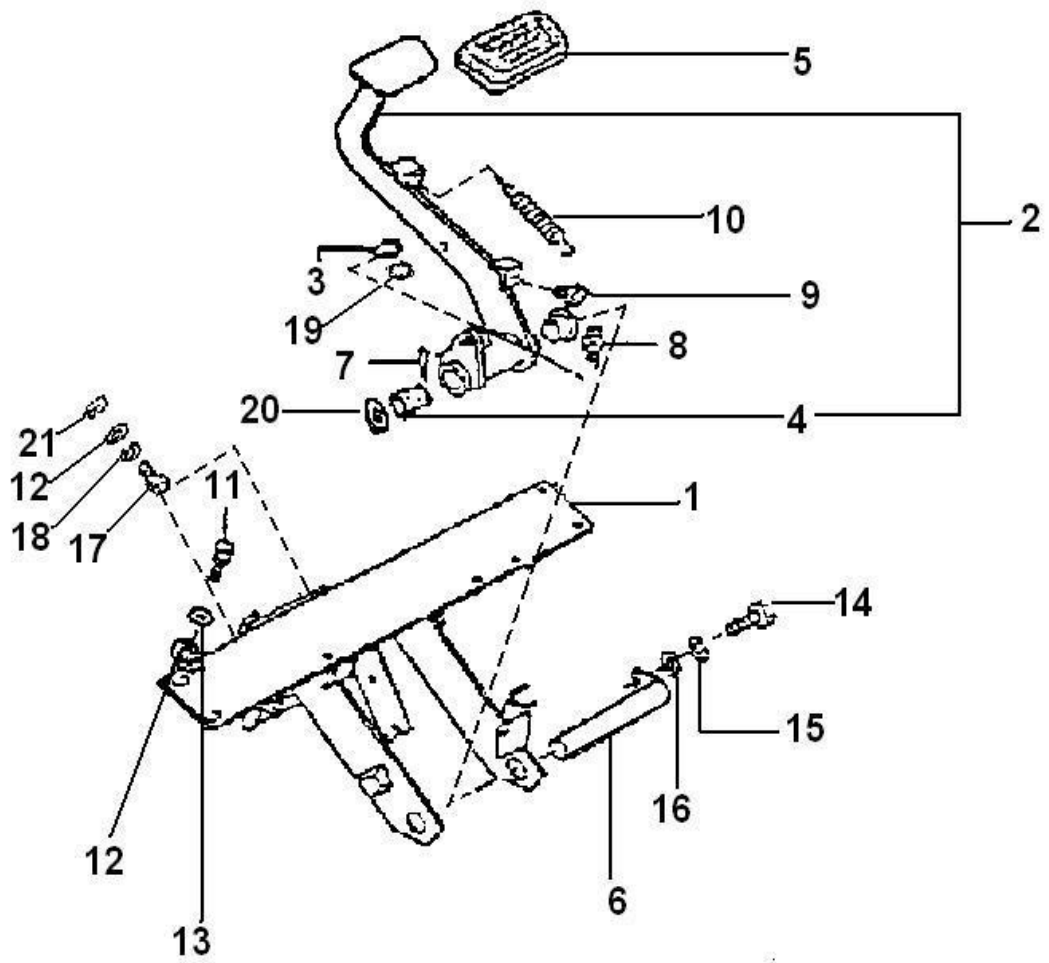
01-07 行车制动管路
BRAKE PIPING & CONTROL



01-07 行车制动管路
BRAKE PIPING & CONTROL

序号 NO.	零件图号 Part NO.	零件名称 Description	数量 Q'ty
1	15RA6110000	右刹车管 TUBE ASSY-BRAKE RH	1
2	15RA6150000	左刹车管 TUBE ASSY-BRAKE LH	1
3	CK3/4	刹车总泵 BRAKE MASTER CYLINDER	1
4	GB/T13527.1	软聚氯乙烯管 LS-10×1.5×550 PVC TUBL LS-10×1.5×550	1
5	23775-42100	储油罐 OIL TANK	1
6	15RA6170000	夹子 CLIP	1
7	GB5781	螺栓 M5×10 BOLT M5×10	2
8	GB93	垫圈 5 WASHER SPRING 5	2
9	GB97.1	垫圈 5 WASHER 5	2
10	15RA6160000	推杆 ROD	1
11	JB/ZQ3777	喉箍 11~16 CLAMP-HOSE 11~16	2

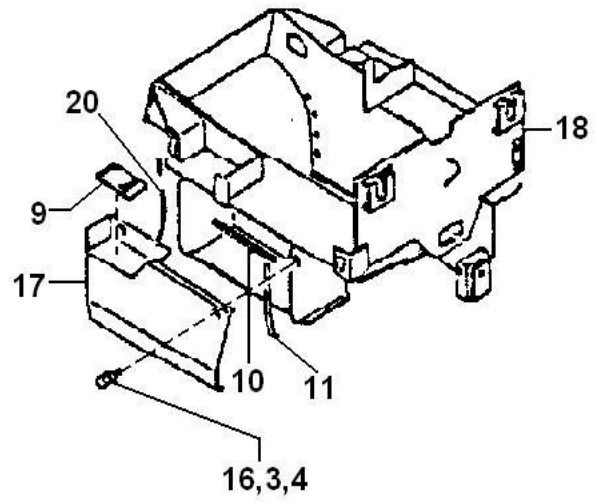
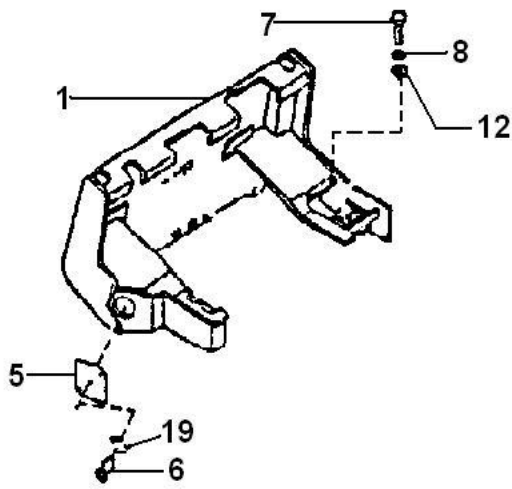
01-08 制动踏板总成
BRAKE & CLUTCH PEDAL



01-08 制动踏板总成
BRAKE & CLUTCH PEDAL

序号 NO.	零件图号 Part NO.	零件名称 Description	数量 Q'ty
1	25RC6120000	板组件 1 BRACKET ASSY-PEDAL 1	1
2	15RA6140000	板组件 2 BRACKET ASSY-PEDAL 2	1
3	GB882	销轴 8×20 PIN 8×20	1
4	FZ-1.28.31.35	衬套 BUSH-PEDAL	2
5	30X6100001	盖 PAD-PEDAL	1
6	15RA6130000	轴 SHAFT-FULCRUM	1
7	GB91	销 2.5×20 PIN-SNAP 2.5×20	1
8	JB/T7940.1	油杯 M8×1 NIPPLE M8×1	1
9	46584-S0100	挡块 STOPPER-RUBBER	1
10	46487-48270	弹簧 SPRING-PEDAL RETURN	1
11	GB5782	螺栓 M10×30 BOLT M10×30	4
12	GB97.1	垫圈 10 WASHER 10	6
13	GB93	垫圈 10 WASHER SPRING 10	4
14	GB5781	螺栓 M8×20 BOLT M8×20	1
15	GB93	垫圈 8 WASHER SPRING 8	1
16	GB97.1	垫圈 8 WASHER 8	1
17	GB5782	螺栓 M10×35 BOLT M10×35	2
18	GB859	垫圈 10 WASHER 10	2
19	GB848	垫圈 8 WASHER 8	1
20	15RA6100001	铜垫 WASHER	2
21	GB6170	螺母 M10 NUT M10	6

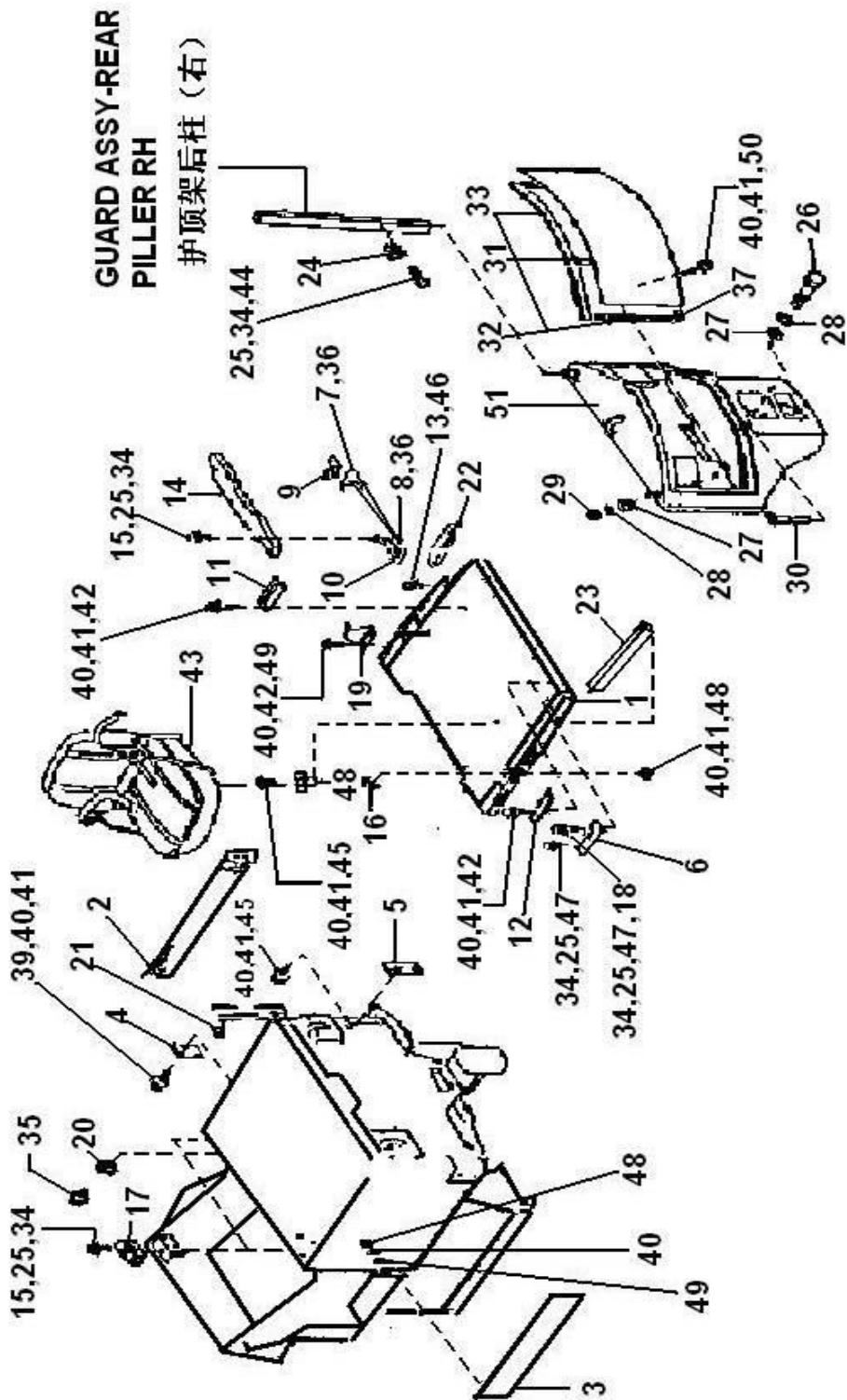
01-09 仪表架装配 FRAME



01-09 仪表架装配
FRAME

序号 NO.	零件图号 Part NO.	零件名称 Description	数量 Q'ty
1	25RC5210000	仪表架总成 FRAME ASSY-INSTRUMENT	1
3	GB93	垫圈 10 WASHER SPRING 10	2
4	GB97.1	垫圈 10 WASHER 10	2
5	50591-2K400	倾斜油缸盖板 COVER ASSY-TILT CYLINDER	1
6	GB65	螺钉 M6×10 SCREW M6×10	2
7	GB5786	螺栓 M14×1.5×30 BOLT M14×1.5×30	7
8	GB93	垫圈 14 WASHER SPRING14	7
9	50561 2K400	踏板 MAT-STEP	1
10	25RC5100003	密封条 SEAL-COVER	1
11	25RC5100001	密封条 SEAL-COVER	1
12	GB97.1	垫圈 14 WASHER14	7
16	GB5783	螺栓 M10×25 BOLT M10×25	2
17	51533-2K400	电机箱门总成 PANEL ASSY-SIDE	1
18	25RC5100000	车架 FRAME	1
19	GB93	垫圈 6 WASHER SPRING 6	2
20	25RC5100002	密封条 SEAL-COVER	1

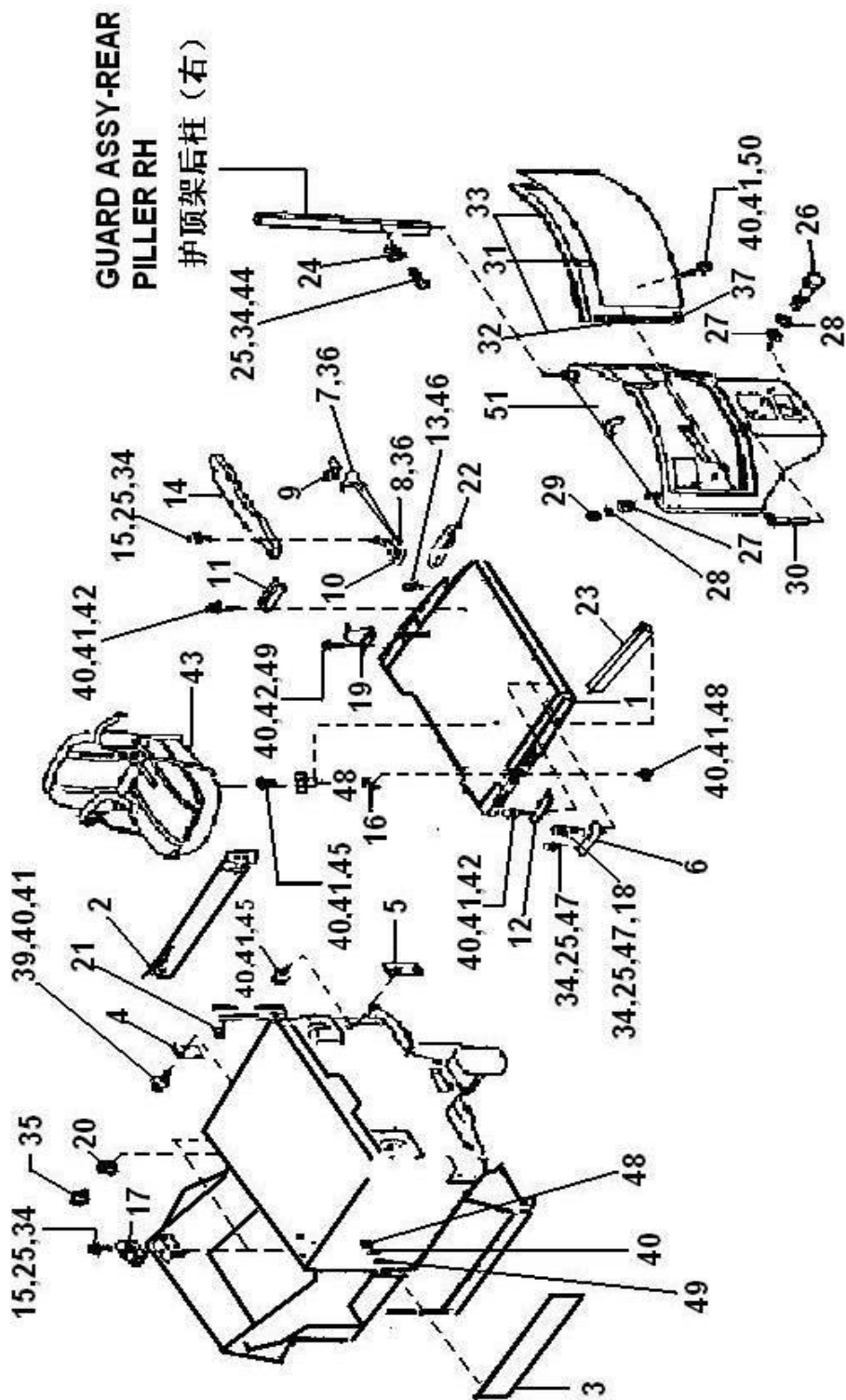
01-10 电瓶罩及控制器盖装配
TOP PANEL, HINGE & FITTING



01-10 电瓶罩及控制器盖装配
TOP PANEL,HINGE & FITTING

序号 NO.	零件图号 Part NO.	零件名称 Description	数量 Q'ty
1	E65201-2K410	电瓶罩 PANEL ASSY-TOP, UPPER	1
2	65240-44H00	右侧挡板总成 PANEL ASSY-TOP, SIDE RH	1
3	65241-2K401	左侧挡板总成 PANEL ASSY-TOP, SIDE LH	1
4	15RB5502000	联板 BRACKET ASSY-TOP SIDE A FRONT	1
5	15RB5505000	联板 BRACKET ASSY-TOP SIDE A REAR	1
6	30X5250000	铰链 HINGE ASSY-TOP PANEL	2
7	15RA5800007	扭簧(右) BAR-TORSION TOP PANEL RH	1
8	15RA5800004	扭簧(左) BAR-TORSION TOP PANEL LH	1
9	15RA5800002	扭簧支架(右) SPACER-HINGE RH	1
10	15RA5800005	扭簧支架(左) SPACER-HINGE LH	1
11	15RA5800003	扭簧限位板(右) BRACKET ASSY-TORSION BAR RH	1
12	15RA5800006	扭簧限位板(左) BRACKET ASSY-TORSION BAR LH	1
13	GB97.1	垫圈 5 WASHER 5	2
14	15RA5830000	扭簧盒 COVER ASSY-TORSION BAR	1
15	GB5781	螺栓 M6×20 BOLT M6×20	4
16	15RA5800001	拉手 STRAP ASSY-TOP PANEL	1
17	65370-41H00	缓冲垫 BUMPER-TOP PANEL RUBBER	2
18	GB6170	螺母 M6 NUT M6	4
19	E65350-43H00	弯板总成 STRIKER ASSY-TOP PANEL	1
20	50U5153000	搭扣 CATCH ASSY-TOP PANEL	1

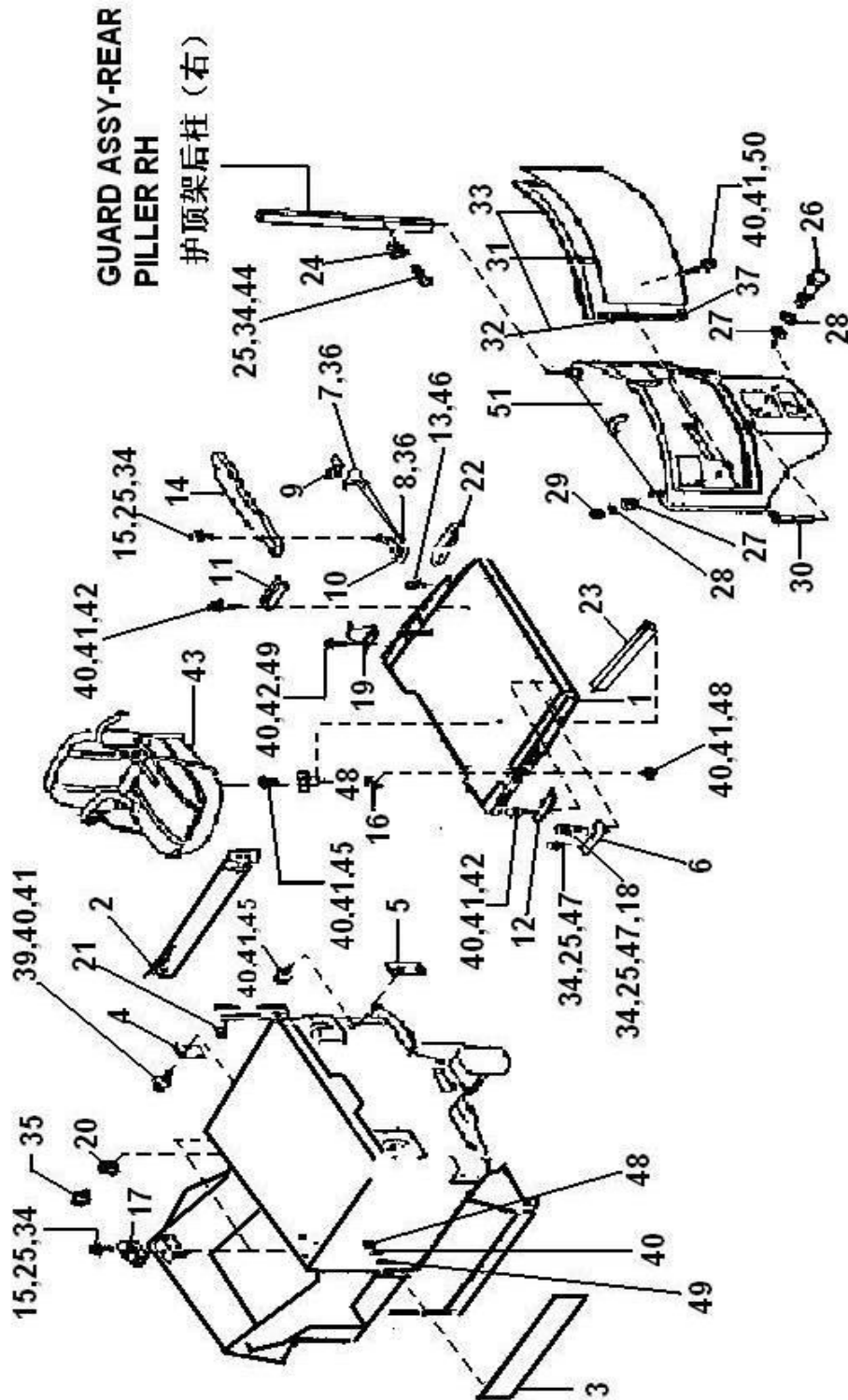
01-10 电瓶罩及控制器盖装配
TOP PANEL, HINGE & FITTING



01-10 电瓶罩及控制器盖装配
TOP PANEL,HINGE & FITTING

序号 NO.	零件图号 Part NO.	零件名称 Description	数量 Q'ty
21	65863-L9000	保护垫 RUBBER-STOPPER	1
22	15RA5810000	电瓶罩小侧门总成 LID ASSY-TOP	1
23	GB7526	金属混合密封条 (1M)	1
24	15RA0260000	挂钩 LOCK ASSY-TOP PANEL SIDE LH	1
25	GB93	垫圈 6 WASHER SPRING 6	14
26	GB5782	螺栓 M30×90 BOLT M30×90	1
27	15RA5900002	垫圈 WASHER	3
28	GB93	垫圈 30 WASHER SPRING 30	3
29	GB6170	螺母 M30 NUT M30	2
30	65520-41H00	牵引销 PIN-TRACTION	1
31	15RA5920000	控制盒门 COVER ASSY-CONTROLLER	1
32	15RA5920003	密封条 SEAL-COVER	2
33	15RA5920001	密封条 SEAL-COVER	1
34	GB97.1	垫圈 6 WASHER 6	14
35	GB68	螺钉 M4×12 SCREW M4×12	2
36	GB/T13527.1-92	软聚氯乙烯管 LS—6.0×1.0×150 PVC TUBL LS—6.0×1.0×150	2
37	15RA5920002	密封条 SEAL-COVER	1
39	GB5783	螺栓 M8×16 BOLT M8×16	2
40	GB93	垫圈 8 WASHER SPRING 8	23

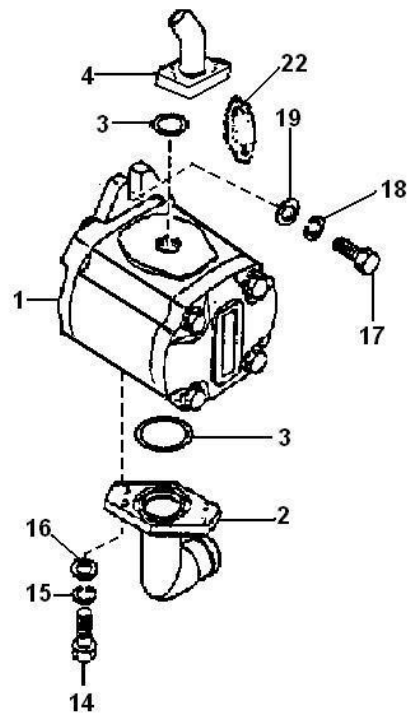
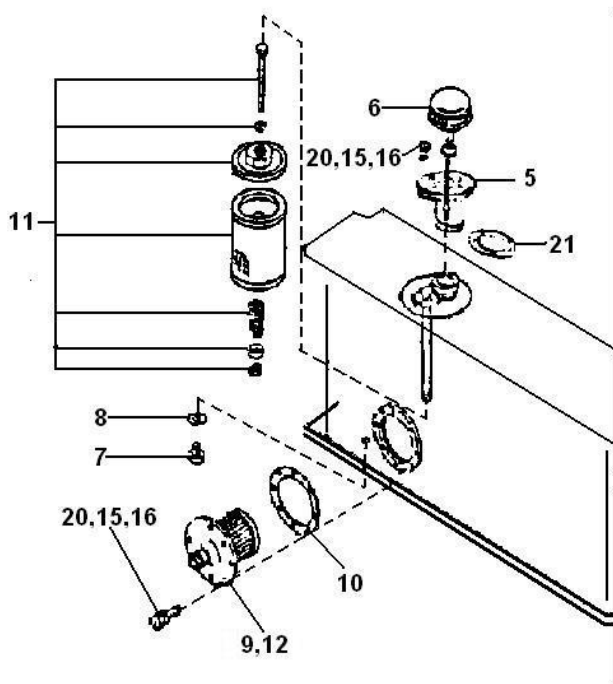
01-10 电瓶罩及控制器盖装配
TOP PANEL, HINGE & FITTING



01-10 电瓶罩及控制器盖装配
TOP PANEL,HINGE & FITTING

序号 NO.	零件图号 Part NO.	零件名称 Description	数量 Q'ty
41	GB97.1	垫圈 8 WASHER 8	15
42	GB5781	螺栓 M8×20 BOLT M8×20	6
43	YH-1601	座椅 SEAT	1
44	GB5781	螺栓 M6×12 BOLT M6×12	2
45	GB5783	螺栓 M8×20 BOLT M8×20	4
46	GB67	螺钉 M5×20 SCREW M5×20	2
47	GB68	螺钉 M6×30 SCREW M6×30	8
48	GB6170	螺母 M8 NUT M8	10
49	GB96.1	垫圈 8 WASHER 8	6
50	GB5781	螺栓 M8×25 BOLT M8×25	1
51	25RC5910000 (CPD25C 用) 20RC5910000 (CPD20C 用)	平衡重 WT ASSY-CNTR	1

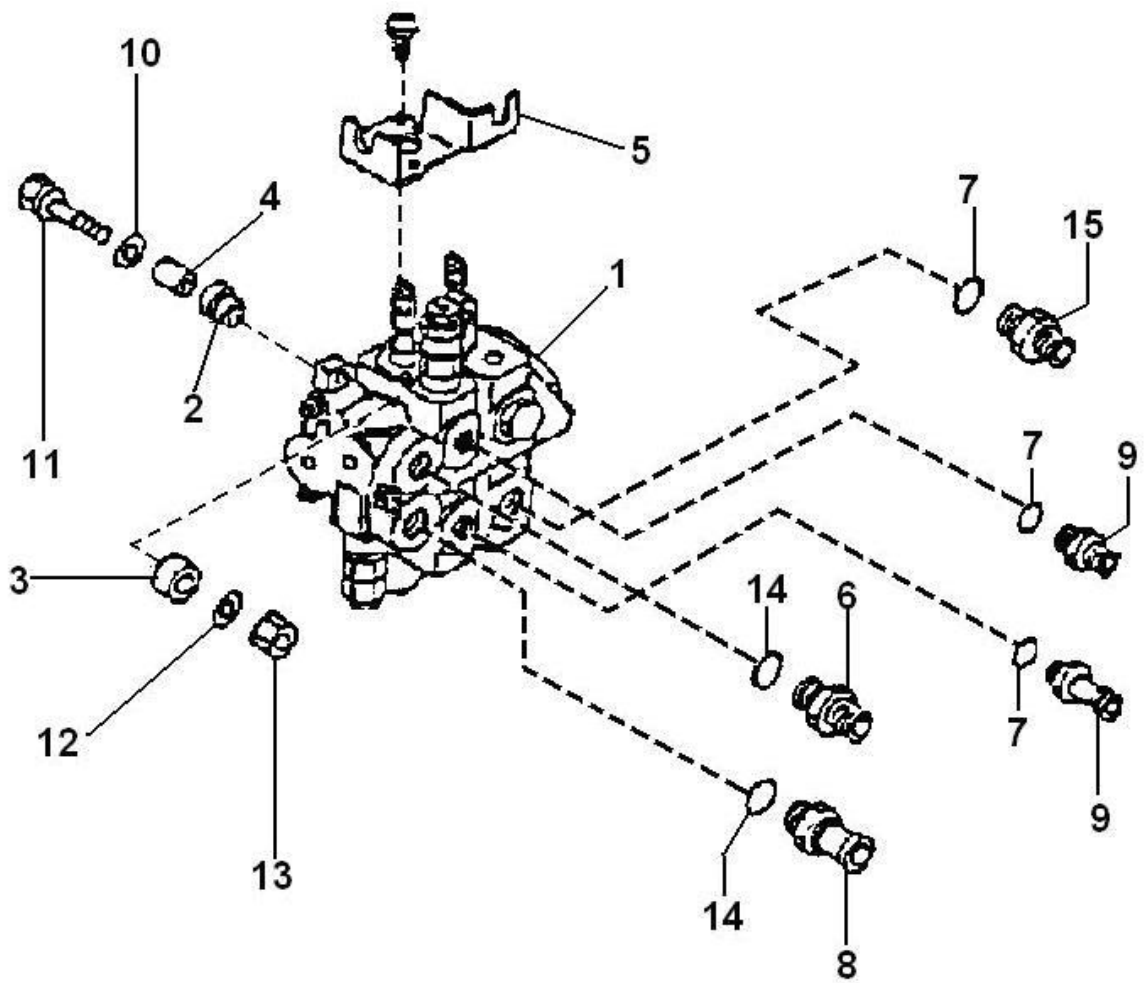
01-11 工作油泵及工作油箱装配 HYDRAULIC OIL PUMP & TANKFITTING



01-11 工作油泵及工作油箱装配
HYDRAULIC OIL PUMP & TANKFITTING

序号 NO.	零件图号 Part NO.	零件名称 Description	数量 Q'ty
1	CBT _D -F420-AFH4	齿轮泵(起升) PUMP ASSY-HYDRAULIC OIL	1
2	15RB7030000	法兰 FLANGE-INLET	1
3	GB1235	O形密封圈 35×3.1 O-RING 35×3.1	2
4	15RB7020000	法兰 FLANGE	1
5	E69250-41H10	回油总成 PIPE ASSY-RUBBER VALVE RETURN	1
6	E69260-41H03	油箱盖 GAUGE ASSY-LEVEL	1
7	100X5100002	螺塞 PLUG	1
8	100X5100003	垫 GASKET	1
9	25RC5610000	进油总成 FIETER ASSY-HYDRAULICOIL	1
10	E69271-00H00	垫 PACKING-FILTER	1
11	91875-11400	滤油器 FILTER ASSY-MICRON	1
12	WU-63×180J	滤油器 FILTER	1
14	GB5783	螺栓 M8×20 BOLT M8×20	8
15	GB93	垫圈 8 WASHER SPRING 8	18
16	GB97.1	垫圈 8 WASHER 8	18
17	GB5783	螺栓 M10×30 BOLT M10×30	2
18	GB93	垫圈 10 WASHER SPRING 10	2
19	GB97.1	垫圈 10 WASHER 10	2
20	GB5783	螺栓 M8×16 BOLT M8×16	10
21	69271-41H00	垫 GASKET	1
22	15RB700004	垫 GASKET	1

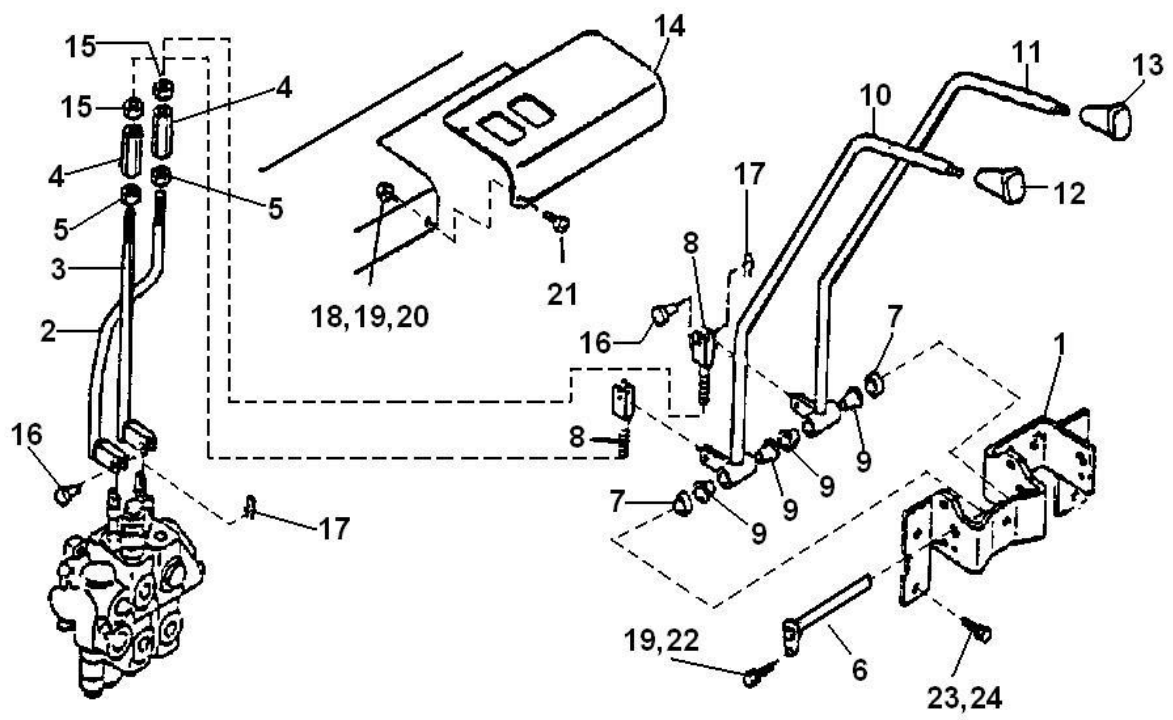
01-12-01 多路换向阀总成
HYDRAULIC CONTROL VALVE & FITTING



01-12-01 多路换向阀总成
HYDRAULIC CONTROL VALVE & FITTING

序号 NO.	零件图号 Part NO.	零件名称 Description	数量 Q'ty
1	CDB-F15DD-02a	多路换向阀 VALVE ASSY-CONTROL	1
2	69391-L4000	隔套 INSULATOR-CONTROL VALVE	3
3	69392-L4000	垫 INSULATOR-CONTROL VALVE	3
4	69394-L4000	套 SPACER-CONTROL VALVE	3
5	15RA6800001	板 BRACKET-MICRO SWITCH	1
6	15RA7000007	接头 CONNECTOR	1
7	GB1235	O 形密封圈 22×2.4 O-RING 22×2.4	3
8	15RA7000008	接头 CONNECTOR	1
9	15RA7000009	接头 CONNECTOR	2
10	GB97.1	垫圈 10 WASHER 10	3
11	GB5783	螺栓 M10×50 BOLT M10×50	3
12	GB93	垫圈 10 WASHER SPRING 10	3
13	GB6170	螺母 M10 NUT M10	3
14	GB3452.1	O 形密封圈 18×2.65 O-RING 18×2.65	2
15	15RA7000013	接头 CONNECTOR	1

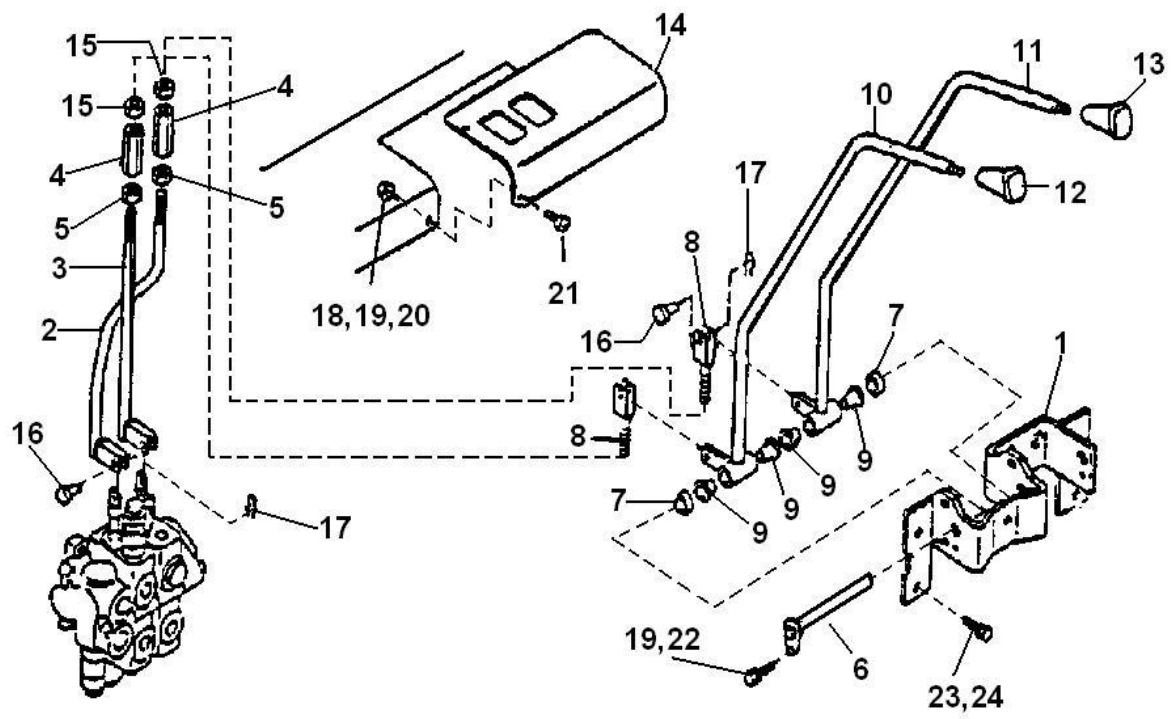
01-12-02 多路阀操纵
HYDRAULIC CONTROL LEVER



01-12-02 多路阀操纵
HYDRAULIC CONTROL LEVER

序号 NO.	零件图号 Part NO.	零件名称 Description	数量 Q'ty
1	69471-41H01	操纵杆支架 BRACKET ASSY-CONT LEVER	1
2	69452-2K400	联杆 ROD-CONTROL VALVE	1
3	69452-2K401	联杆 ROD-CONTROL VALVE	1
4	15RA6800002	调节螺母 BUCKLE-TURN	2
5	69455-L1100	左旋螺母 NUT	2
6	69445-10H00	轴 PIN ASSY-HINGE	1
7	69433-L1110	套 COLLAR-CONTROL LEVER	2
8	69452-L1113	联杆 ROD-CONTROL VALVE	2
9	FZ-1.12.14.35	轴套 BUSH-PEDAL	2
10	69415-2K400	操纵杆 LEVER-CONTROL VALVE LIFT	1
11	69415-2K401	操纵杆 LEVER-CONTROL VALVE TILT	1
12	30CJA60-00500	起升手球 KNOB-CONTROL LEVER,LIFT	1
13	30CJA60-01200	倾斜手球 KNOB-CONTROL LEVER ,TILT	1
14	69475-36H03	盖 COVER -INSTRUMENT PANEL	1
15	GB6173	螺母 M12×1.5 NUT M12×1.5	2
16	GB882	销轴 B6×20 PIN B6×20	4
17	GB91	销 2×20 PIN 2×20	4
18	GB6170	螺母 M6 NUT M6	2
19	GB93	垫圈 6 WASHER SPRING 6	5
20	GB97.1	垫圈 6 WASHER 6	4
21	GB65	螺钉 M6×16 SCREW M6×16	4

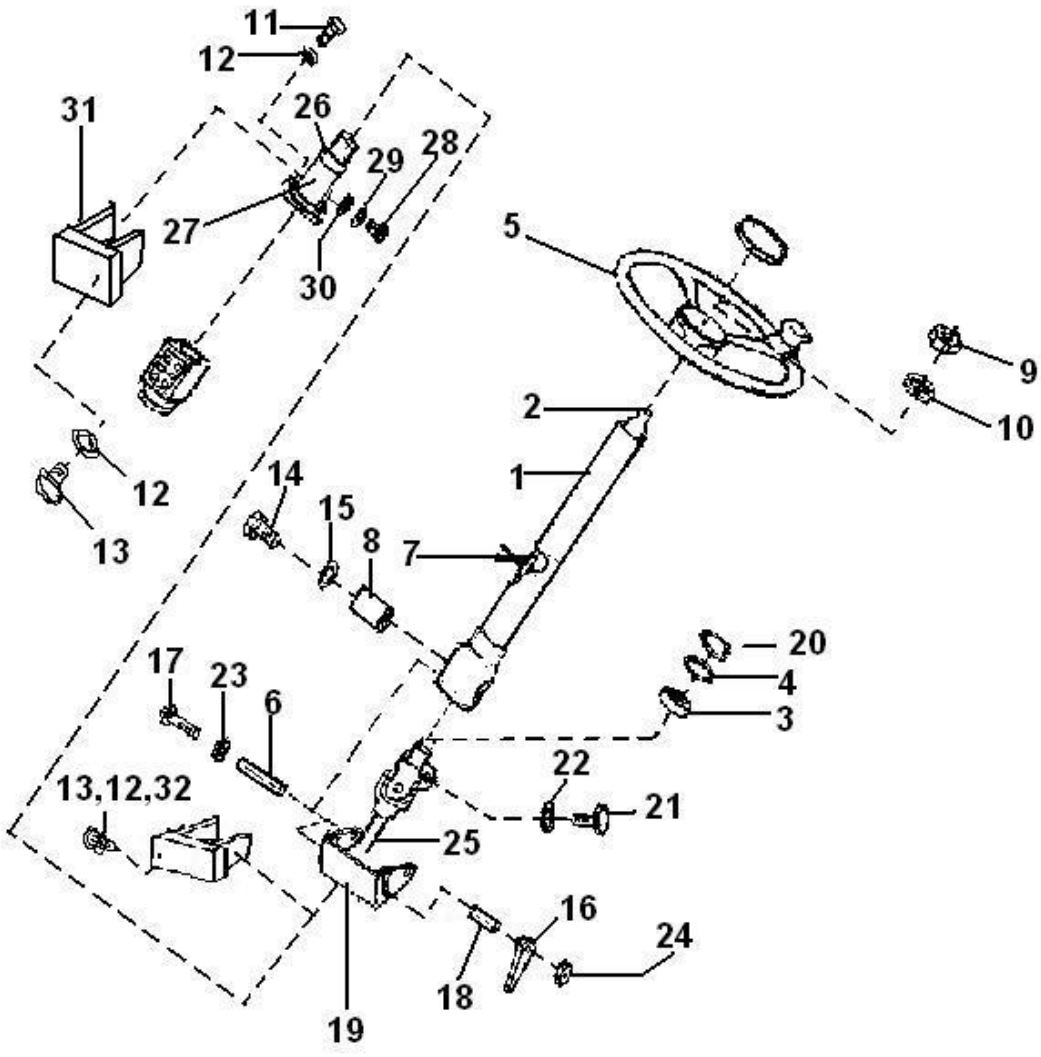
01-12-02 多路阀操纵
HYDRAULIC CONTROL LEVER



02-12-02 多路阀操纵
HYDRAULIC CONTROL LEVER

序号 NO.	零件图号 Part NO.	零件名称 Description	数量 Q'ty
22	GB5783	螺栓 M6×12 BOLT M6×12	1
23	GB5783	螺栓 M8×16 BOLT M8×16	3
24	GB93	垫圈 8 WASHER SPRING 8	3

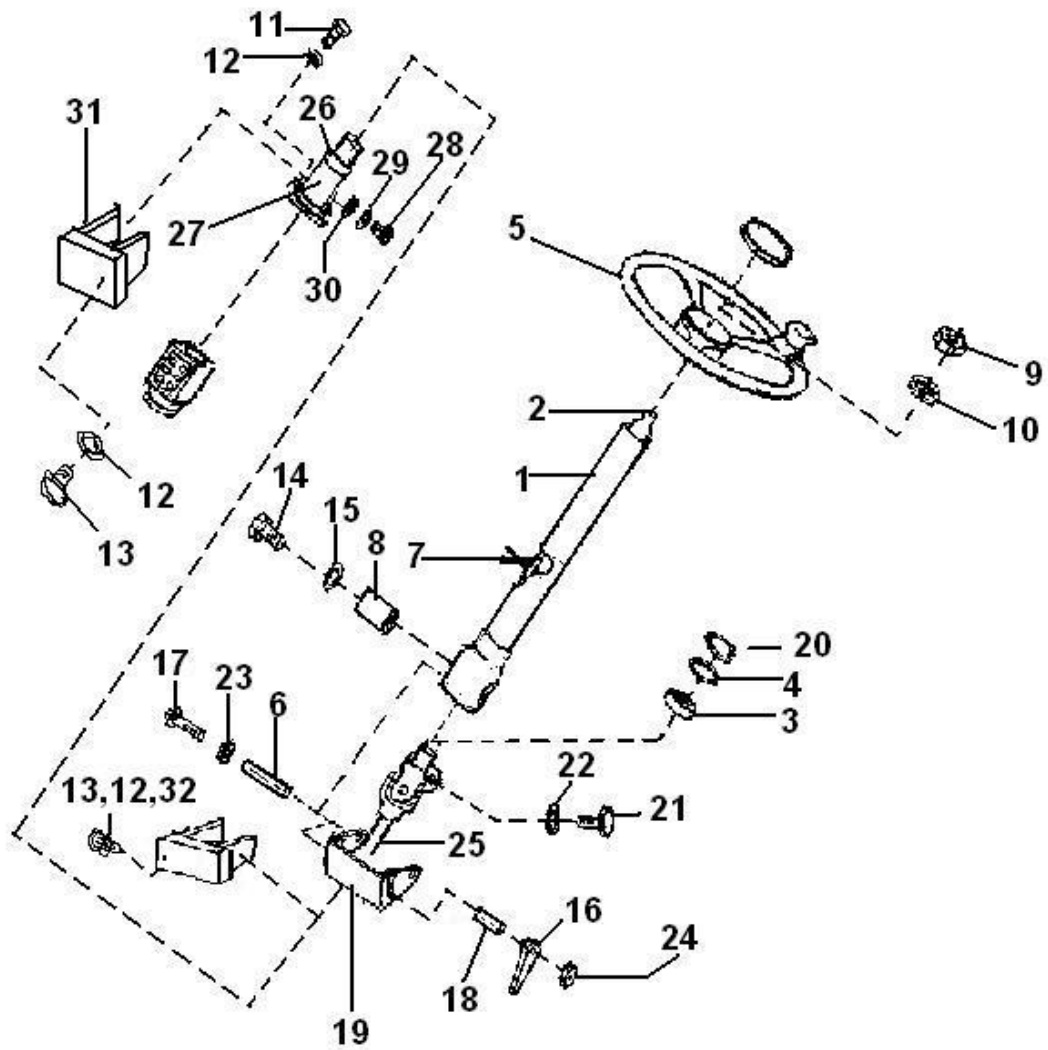
01-13 转向装置
STEERING SYSTEM



01-13 转向装置
STEERING SYSTEM

序号 NO.	零件图号 Part NO.	零件名称 Description	数量 Q'ty
1	15RCA4210000	转向管柱总成 COLUMN	1
2	15RCA4230000	转向轴 SHAFT STEERING	1
3	GB/T276	滚动轴承 6203-2Z BEARING-BALL 6203-2Z	1
4	GB893.1	挡圈 40 RING SNAP 40	1
5	DC320	方向盘总成 HANDLE-WHEEL ASSY	1
6	30V42B00003	钢管拔 22×3.5-91 STEEL PIPE 22×3.5-91	1
7	30X4200002	喇叭线夹 WIRE CLAMP	1
8	30X4200007	衬套 BUSHING	2
9	GB6173	螺母 M14×1.5 NUT M14×1.5	1
10	GB93	垫圈 14 WASHER SPRING 14	1
11	GB5782	螺栓 M10×45 BOLT M10×45	4
12	GB93	垫圈 10 WASHER SPRING 10	12
13	GB5783	螺栓 M10×25 BOLT M10×25	8
14	30V42B00001	支承栓 BOLT	2
15	GB93	垫圈 16 WASHER SPRING 16	2
16	30V42B30000	锁紧手柄总成 HANDLE SYSTEM	1
17	30X42B00004	螺栓 BOLT	1
18	30V42B00002	锁紧柱 LOCK POLE	1
19	30V42B50000	支架总成 BRACKET	1
20	GB894.1	挡圈 17 RING SNAP 17	1

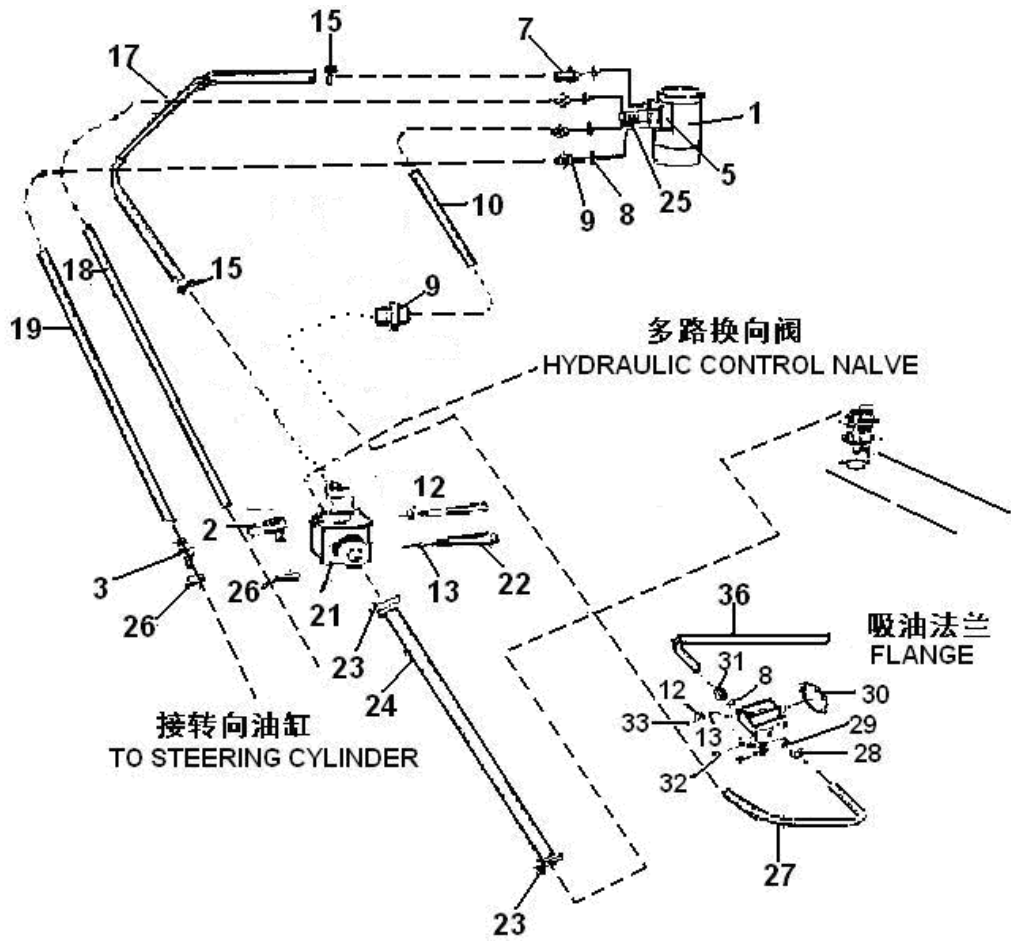
01-13 转向装置
STEERING SYSTEM



01-13 转向装置
STEERING SYSTEM

序号 NO.	零件图号 Part NO.	零件名称 Description	数量 Q'ty
21	GB5783	螺栓 M8×25 BOLT M8×25	1
22	GB93	垫圈 8 WASHER SPRING 8	1
23	GB97.1	垫圈 14 WASHER 14	1
24	GB6170	螺母 M14 NUT M14	1
25	DL3404020A	传动轴 TRANSMISSION SHAFT	1
26	30V42B00008	防尘胶圈 DUSTPROOF RUBBER BAND	1
27	720-1106	转向轴总成 REDIRECTOR ASSEMBLY	1
28	GB5786	螺栓 M12×1.25×25 BOLT M12×1.25×25	2
29	GB93	垫圈 12 WASHER SPRING 12	2
30	GB97.1	垫圈 12 WASHER 12	2
31	30V42B40000	转向器支架 REDIRECTOR BRACKET	1
32	GB97.1	垫圈 10 WASHER 10	4

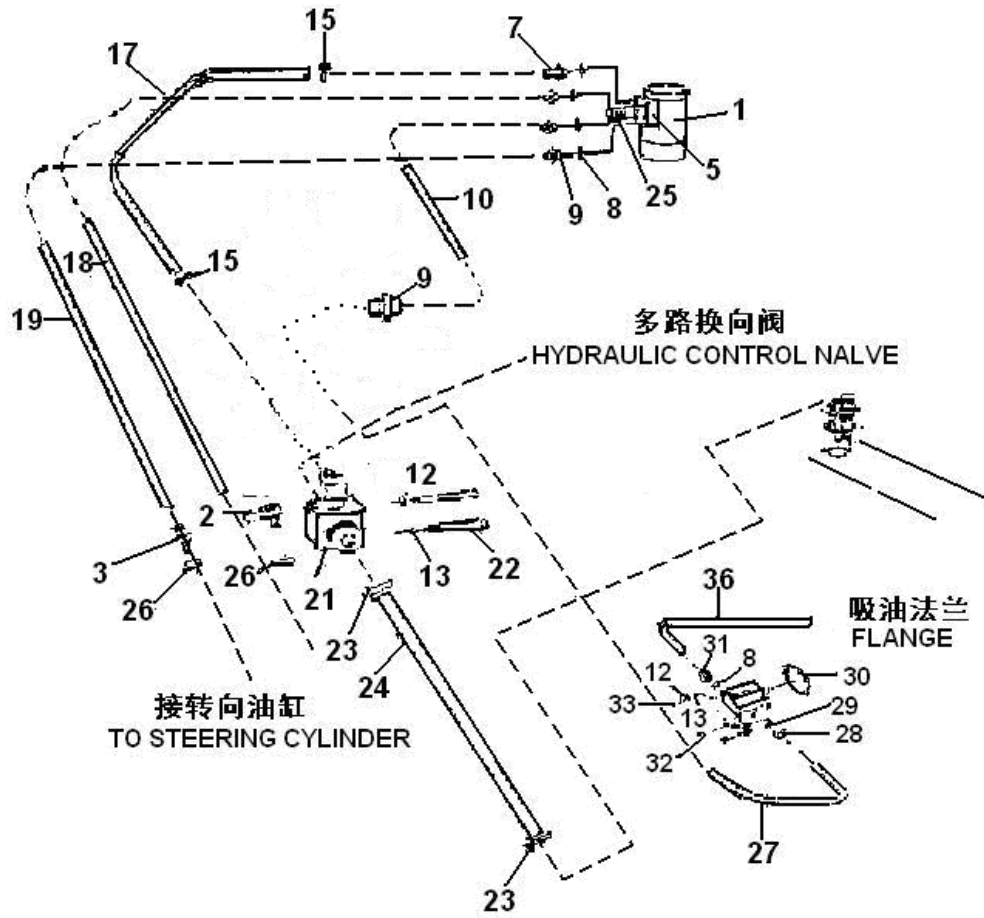
01-14 转向系统 STEERING OIL PIPING



01-14 转向系统
STEERING OIL PIPING

序号 NO.	零件图号 Part NO.	零件名称 Description	数量 Q'ty
1	BZZ1-E80B	全液压转向器 STEERING GEAR	1
2	J20.3-FB4-10b	管接头体 10b CONNECTOR 10b	1
3	J20.3-FB1-8b	管接头体 8b CONNECTOR 8b	1
5	FKC-0730H	组合阀块 VALVE	1
7	15RB7000007	接头 CONNECTOR	2
8	JB982	垫圈 20 WASHER 20	5
9	J20.3-FB1-8c	管接头体 8c CONNECTOR 8c	3
10	25RC7010000A	转向器进油胶管 REDIRECTOR PIPE	1
12	GB93	垫圈 8 WASHER SPRING 8	14
13	GB97.1	垫圈 8 WASHER 8	4
15	QJ/DC05.611	管夹 26 CLAMP 26	2
17	HG4-761-74	回油管 16×1000 HOSE 16×1000	1
18	25RC7030000A	转向胶管 REDIRECTOR PIPE	1
19	25RC7020000A	转向胶管 REDIRECTOR PIPE	1
21	15RB7010000	三通 CONNECTOR	1
22	GB5783	螺栓 M8×60 BOLT M8×60	2

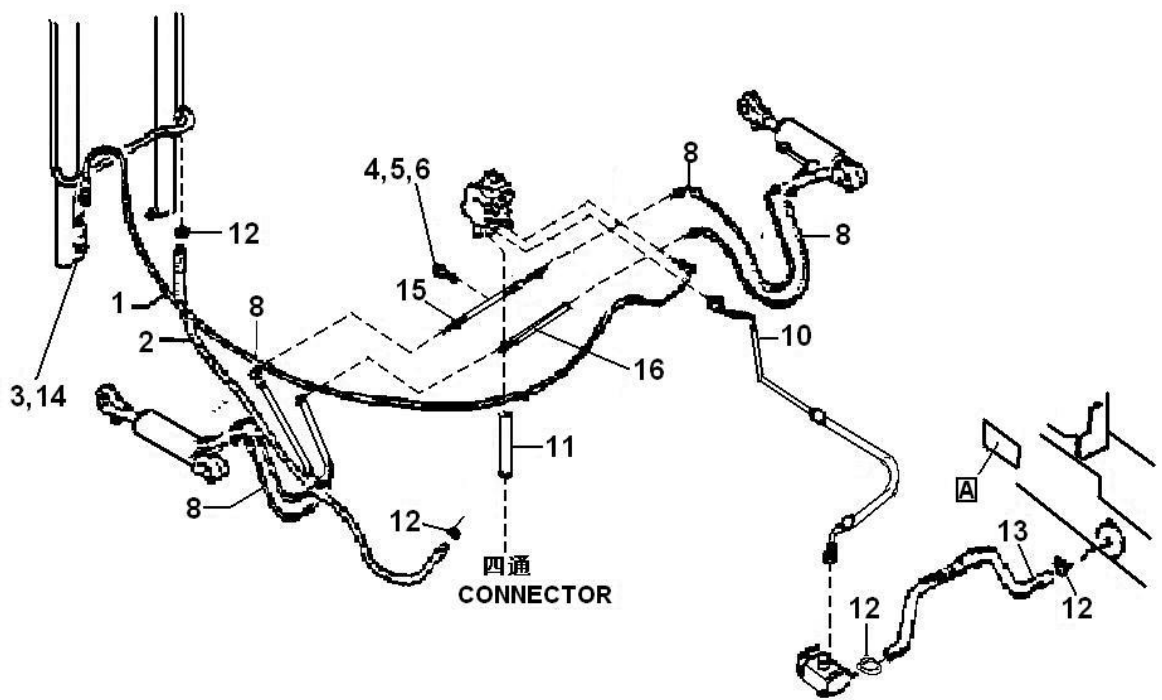
01-14 转向系统 STEERING OIL PIPING



01-14 转向系统
STEERING OIL PIPING

序号 NO.	零件图号 Part NO.	零件名称 Description	数量 Q'ty
23	Q/DC.J.05611	管夹 47 CLAMP 47	2
24	25RC7000001	回油管 HOSE	1
25	GB70	螺钉 M12×40 SCREW M12×40	2
26	GB3452.1	O形圈 14×2.65 O-RING 14×2.65	2
8	25RC7000006	接头 CONNECTOR	1
29	JB982	垫圈 18 WASHER 18	1
30	15RB7000002	垫 GASKET	1
31	15RB7000001	接头 CONNECTOR	1
32	CBW-F306ALB	齿轮泵（转向）	1
33	GB70.1	螺栓 M8×25 BOLT M8×25	2
36	25RC7040000	吸油管 PIPING	1

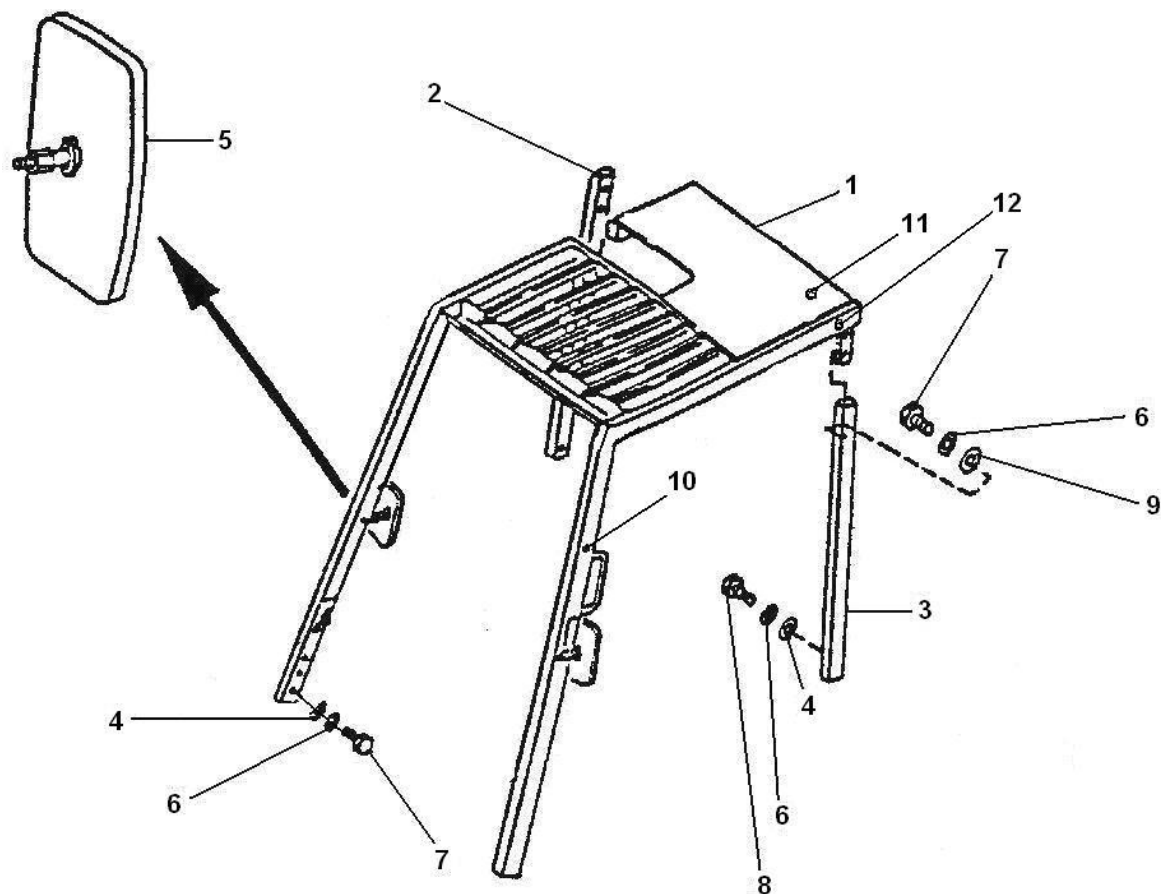
01-15 液压管路系统
HYDRAULIC OIL PIPING



01-15 液压管路系统
HYDRAULIC OIL PIPING

序号 NO.	零件图号 Part NO.	零件名称 Description	数量 Q'ty
1	15RA7000005	起升胶管 13II PIPE & HOSE ASSY-LIFT 13II	1
2	GB/T13527.1-92	软聚氯乙烯管 LS-12×1.5×1000 HOSE-RUBBER LOW PRESSURE LS-12×1.5×1000	1
3	XSF-F16L-2T-G	限速阀 VALVE	1
4	GB5783	螺栓 M8×20 BOLT M8×20	2
5	GB93	垫圈 8 WASHER SPRING 8	2
6	GB97.1	垫圈 8 WASHER 8	2
8	15RA7000003	高压胶管 6II PIPE & HOSE ASSY-TIET 6II	4
10	E69613-2K400	高压胶管 13II PIPE & HOSE ASSY-PUMP 13II	1
11	HG4-761-74	回油管 32×1000 HOSE-RUBBER VALVE RETURN 32×10000	1
12	Q/DC.J. 05611	管夹 47 CLAMP 47	4
13	25RC7000003	吸油管 PIPE ASSY-HYDRAULIC TANK	1
14	GB3452.1	O 形圈 18×2.65 O-RING 18×2.65	1
15	69616-35H01	油管总成 PIPE ASSY-TILT	1
16	69615-35H01	油管总成 PIPE ASSY-TILT	1

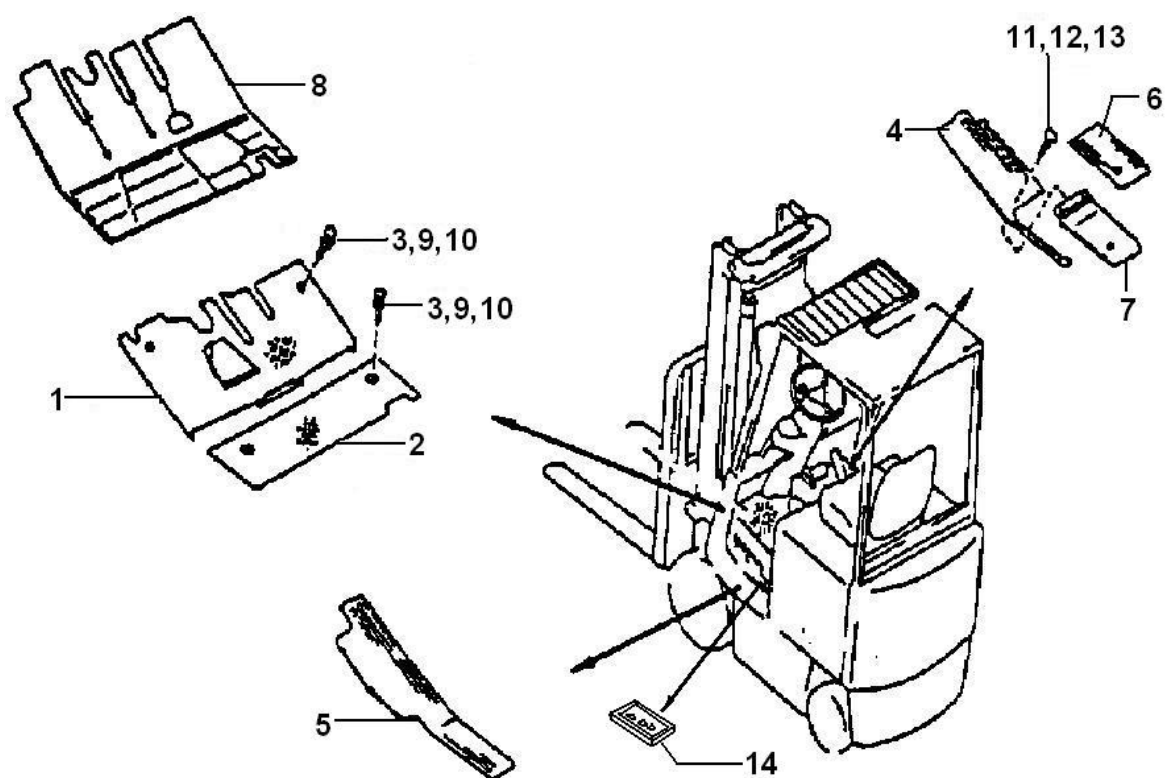
01-16 护顶架
OVER HEAD GUARD



01-16 护顶架
OVER HEAD GUARD

序号 NO.	零件图号 Part NO.	零件名称 Description	数量 Q'ty
1	25RC02A10000	顶架 GUARD ASSY-OVER HEAD,UPPER	1
2	25RC0210000	后柱总成(右) GUARD ASSY-REAR PILLER RH	1
3	25RC0220000	后柱总成(左) GUARD ASSY-REAR PILLER LH	1
4	GB96.1	垫圈 16 WASHER 16	6
5	CA-1046	反光镜 MIRROR ASSY-BACK	2
6	GB93	垫圈 16 WASHER SPRING 16	10
7	GB5786	螺栓 M16×1.5×35 BOLT M16×1.5×35	6
8	GB5783	螺栓 M16×30 BOLT M16×30	4
9	E08915-4461A	垫 WASHER	4
10	30X0200003	出线胶圈 RUBBER-BAND	4
11	Q/DC.J056102	胶环 14×7 RUBBER-BAND 14×7	1
12	Q/DC.J056102	胶环 14×2 RUBBER-BAND 14×2	1

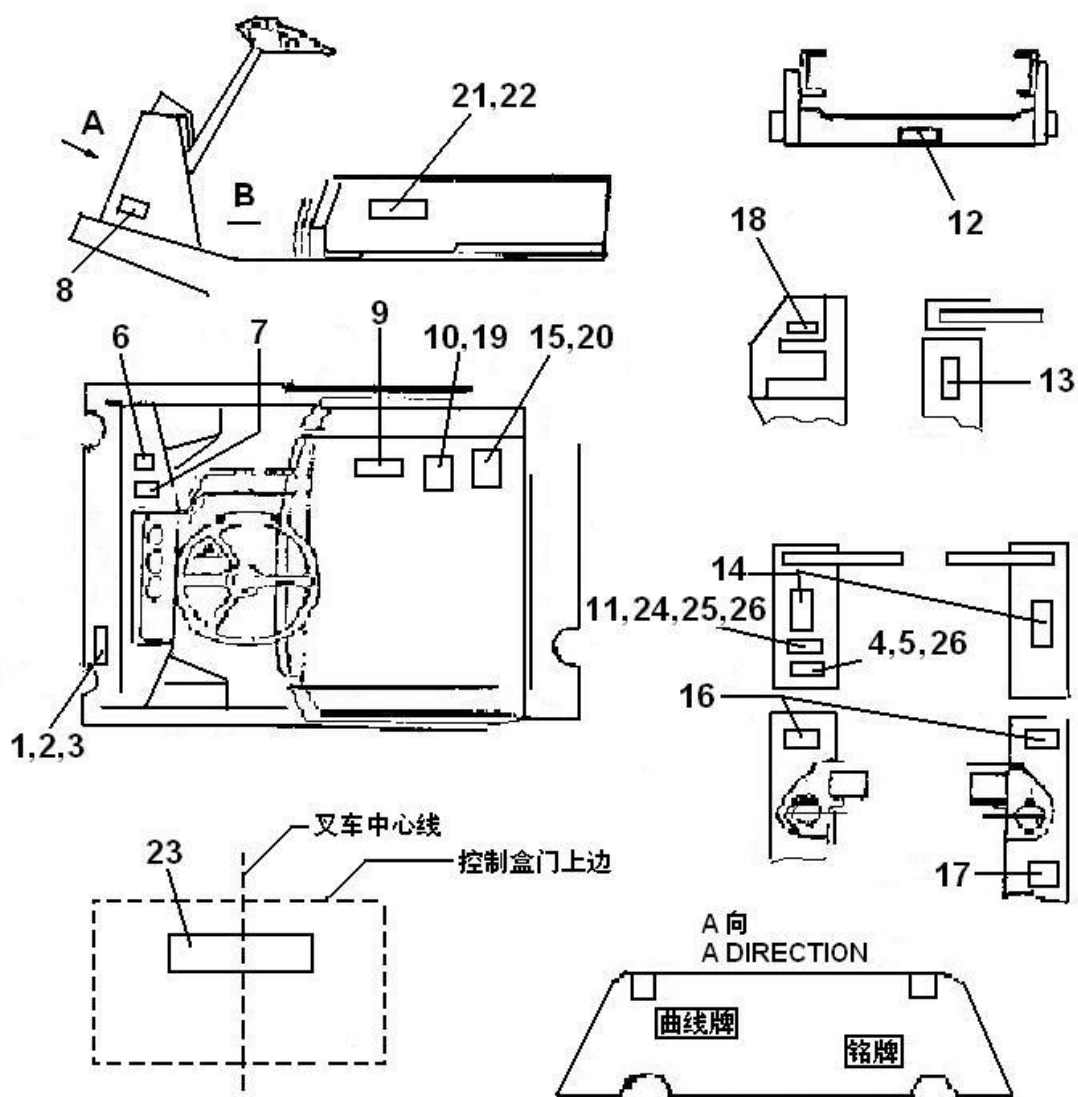
01-17 底板装配
FLOOR PANEL



01-17 底板装配
FLOOR PANEL

序号 NO.	零件图号 Part NO.	零件名称 Description	数量 Q'ty
1	25RC5510000	前底板总成 BOARD ASSY-FRONT FLOOR	1
2	15RB5503000	后底板 BOARD ASSY-REAR FLOOR	1
3	GB5783	螺栓 M8×20 BOLT M8×20	4
4	74906-44H00	底板垫（右） MAT-REAR FLOOR RH	1
5	74907-2K400	底板垫（左） MAT-REAR FLOOR LH	1
6	74911-45H00	盖板垫 MAT-COVER	1
7	50563-45H00	加油口盖 LID-HYDRAULIC OIL FILLER	1
8	25RC5500001	底板垫 MAT ASSY-FLOOR	1
9	GB93	垫圈 8 WASHER SPRING 8	4
10	GB96.1	垫圈 8 WASHER 8	4
11	GB5781	螺栓 M6×20 BOLT M6×20	2
12	GB6170	螺母 M6 NUT M6	2
13	GB93	垫圈 6 WASHER SPRING 6	2
14	15RA5100009	踏板 MAT-STEP	1

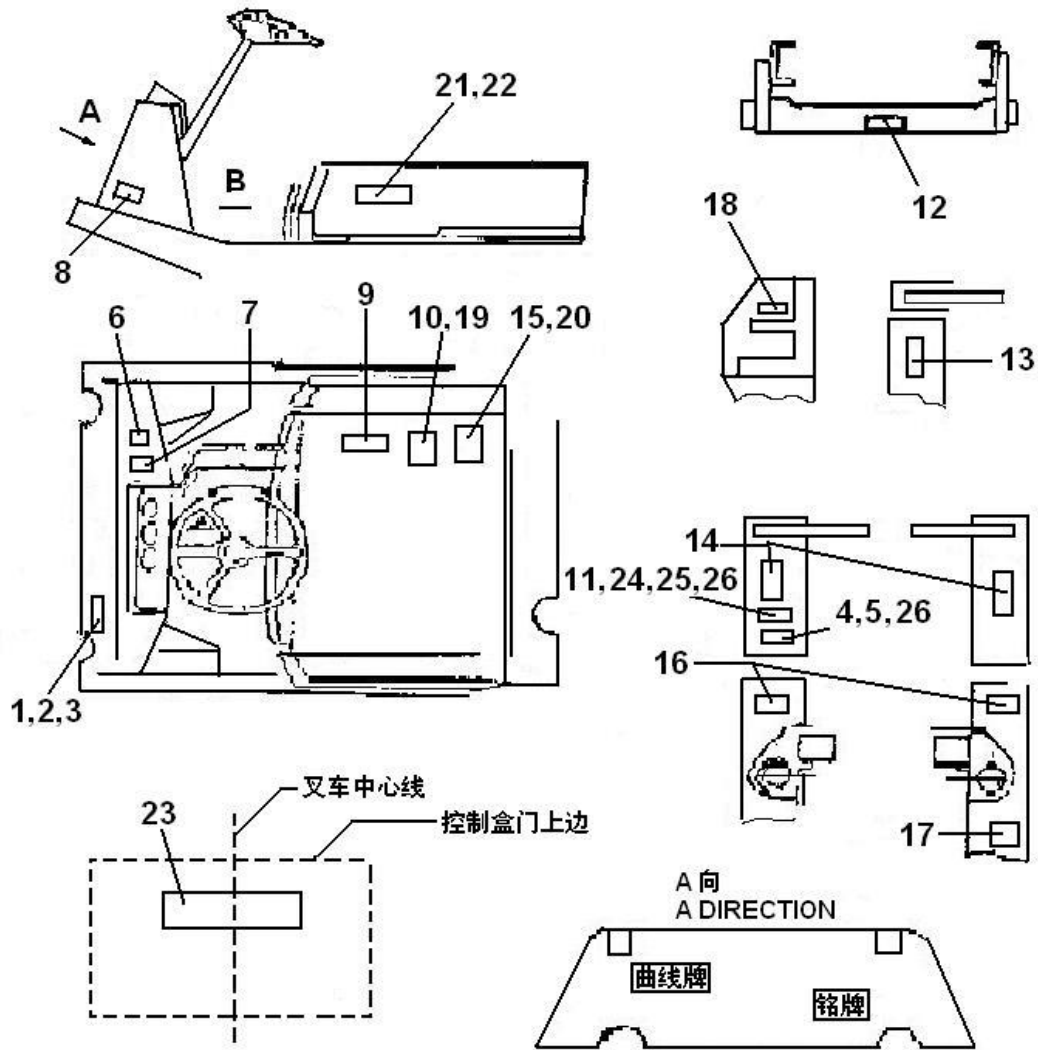
01-18 标牌 INDEX



01-18 标牌
INDEX

序号 NO.	零件图号 Part NO.	零件名称 Description	数量 Q'ty
1	15RA0700002	铭牌 NAME PLATE	1
2	15RA0700016	铭牌 NAME PLATE	1
3	GB12618	抽芯铆钉 3.2×10 EXTRACTION CORE SCREW 3.2×10	4
4	20X0700024	载荷曲线牌 PLATE CAPACITY CHART	1
5	25X0700025	载荷曲线牌 PLATE CAPACITY CHART	1
6	30X0700006	倾斜指示标牌 INDEX TILT	1
7	30X0700007	升降指示标牌 INDEX LIFT	1
8	25RA0700022	轮胎气压标牌 PLATE TYRC-PRESSURE	1
9	15RA0700023	开盖示意标牌 PLATE	1
10	15RA0700009	充电须知标牌 CAUTION DURING CHARGING	1
11	DCJ7.02	产品商标 PRODUCT TRADEMARK	1
12	30X0700014	警告标牌 INDEX WARNING	1
13	15RA0700025	标牌 INDEX	1
14	15W0700003	标牌 INDEX	1
15	15RA0700003	注意事项标牌 INDEX CAUTIONS	1
16	15RA0700015	警告标牌 INDEX WARNING	2
17	15RA0700026	起吊标牌 INDEX	1
18	25RA0700008	换向标牌 INDEX TRAVEL	1
19	15RA0700019	充电须知标牌 CAUTION DURING CHARGING	1
20	15RA0700004	注意事项标牌 INDEX CAUTIONS	1

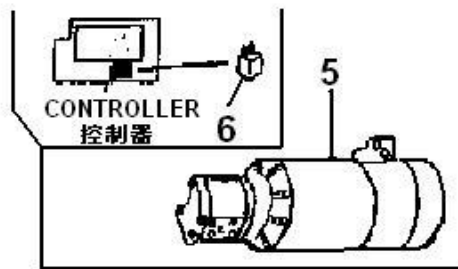
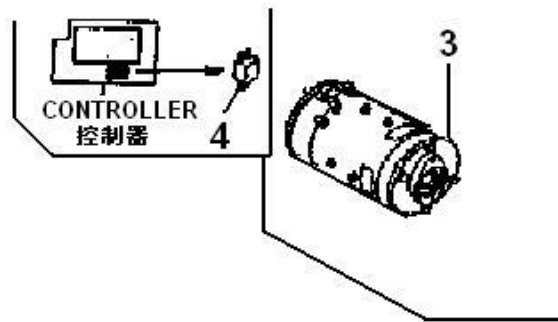
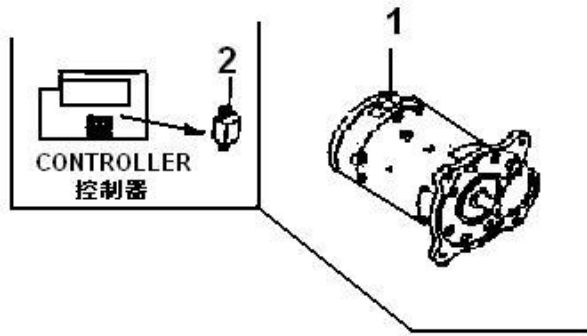
01-18 标牌 INDEX



01-18 标牌
INDEX

序号 NO.	零件图号 Part NO.	零件名称 Description	数量 Q'ty
21	20X0700039	车架侧面标牌 VEHICLE-SIDE -INDEX	2
22	20X0700038	车架侧面标牌 VEHICLE-SIDE -INDEX	2
23	15RA0700027	平衡重标牌 COUNTERPOISE INDEX	1
24	GB827	铆钉 2.5×10 SCREW 2.5×10	8
25	GB67	螺钉 M5×12 BOLT M5×12	2
26	20X0700051	CE 标牌 CE INDEX	1

01-19-01 电机
MOTOR

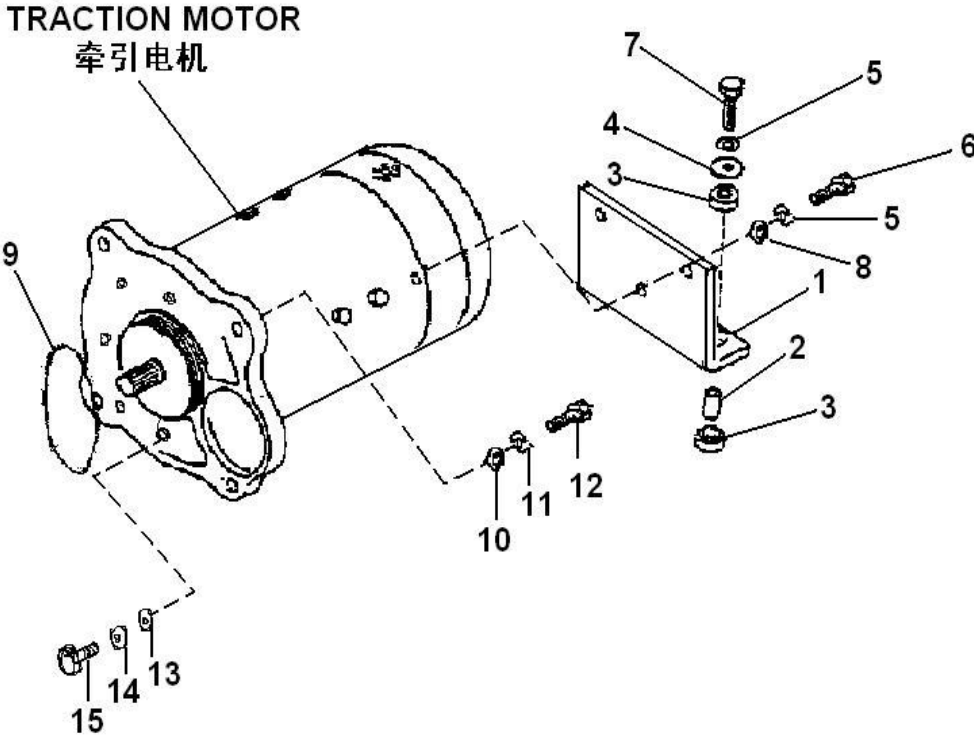


**01-19-01 电机
MOTOR**

1: CPD20、25 (D-C) 2: CPD20、25 (D-DA)

序号 NO.	零件图号 Part NO.	零件名称 Description	数量 Q'ty	适用车型	
				1	2
1	XQ-6.3-2G	直流牵引电机 MOTOR ASSY-TRACTION	1	√	√
2		牵引电机保险丝 FUSE-T/MOTOR	1	√	√
3	XQD-7.5-2	液压电机 MOTOR ASSY-PUMP	1	√	
3	XQD-8.6-1	液压电机 MOTOR ASSY-PUMP	1		√
4		液压电机保险丝 FUSE-P/MOTOR	1	√	√
5	XQD-0.8-7	转向电机 MOTOR ASSY-POWER STEERING	1	√	√
6		转向电机保险丝 FUSE-ST/MOTOR	1	√	√

01-19-02 牵引电机支座
TRACTION MOTOR MOUNTING

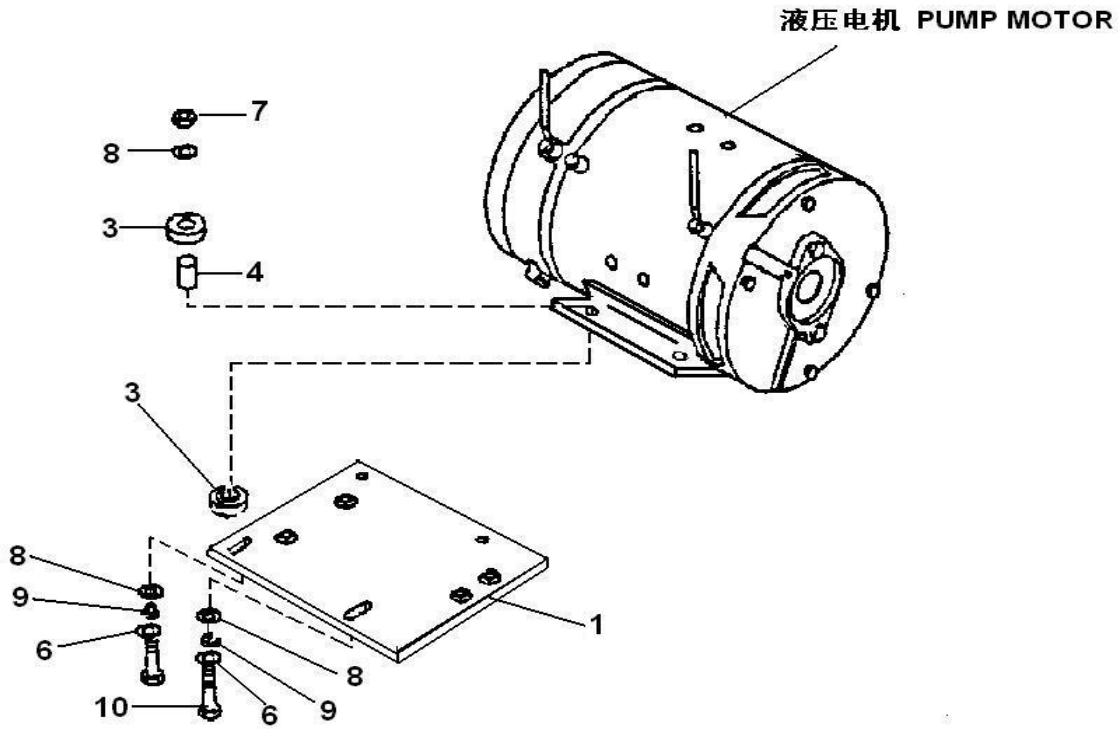


01-19-02 牵引电机支座
TRACTION MOTOR MOUNTING

1: CPD20、25 (D-C)
2: CPD20、25 (D-DA)

序号 NO.	零件图号 Part NO.	零件名称 Description	数量 Q'ty	适用车型	
				1	2
1	25RC8090001	支座 BRACKET-TRACTION MOTOR MTG	1	√	√
2	15RA8007103	限位套筒 COLLAR	2	√	√
3	15RA8007102	橡胶垫 INSULATOR	4	√	√
4	15RA8007101	平垫圈 WASHER	2	√	√
5	GB93	垫圈 14 WASHER SPRING 14	5	√	√
6	GB5786	螺栓 M14×1.5×40 BOLT M14×1.5×40	3	√	√
7	GB5785	螺栓 M14×1.5×60 BOLT M14×1.5×60	2	√	√
8	GB97.1	垫圈 14 WASHER 14	3	√	√
9	GB3452.1	O 形圈 122×3.55 O-RING 122×3.55	1	√	√
10	HG4-692	油封 SD32×52×12 OIL-OBTURATION SD32×52×12	1	√	√
11	GB5785	螺栓 M16×1.5×45 BOLT M16×1.5×45	4	√	√
12	GB93	垫圈 16 WASHER SPRING 16	4	√	√
13	GB97.1	垫圈 12 WASHER 12	5	√	√
14	GB93	垫圈 12 WASHER SPRING 12	5	√	√
15	GB5783	螺栓 M12×35 BOLT M12×35	5	√	√

01-19-03 液压电机支座
PUMP MOTOR MOUNTING

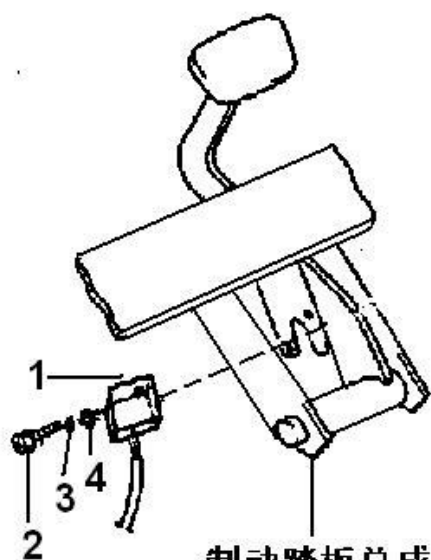


01-19-03 液压电机支座
PUMP MOTOR MOUNTING

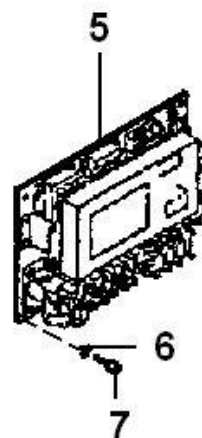
1: CPD20、25 (D-C)
2: CPD20、25 (D-DA)

序号 NO.	零件图号 Part NO.	零件名称 Description	数量 Q'ty	适用车型	
				1	2
1	25RC8021000	液压电机支座总成 BRACKET-TRACTION MOTOR MTG	1	√	√
2	15RC8001001	橡胶垫 INSULATOR	8	√	√
3	15RC8001002	限位套筒 COLLAR	4	√	√
4	GB96.1	垫圈 10 WASHER 10	8	√	√
5	GB6170	螺母 M10 NUT M10	4	√	√
6	GB97.1	垫圈 10 WASHER 10	8	√	√
7	GB93	垫圈 10 WASHER SPRING 10	4	√	√
8	GB5782	螺栓 M10×65 BOLT M10×65	4	√	√

01-19-04 加速器及控制器
ACCELERATOR&CONTROLLER



制动踏板总成
BRAKE&CLUTCH PEDAL

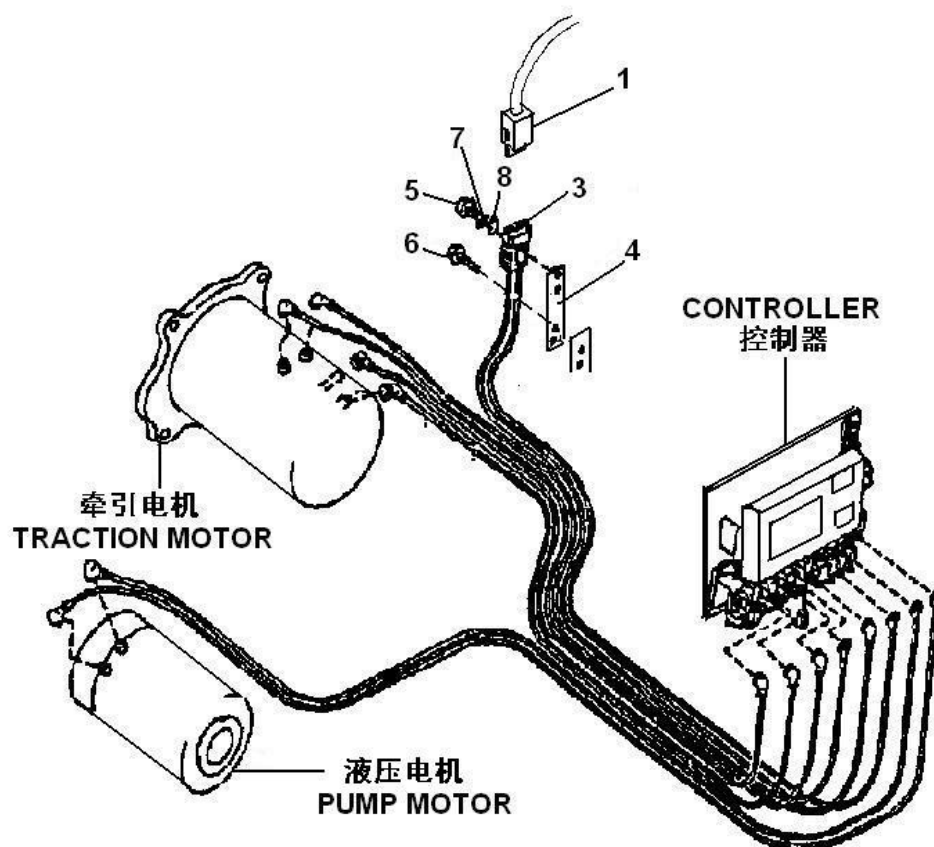


01-19-04 加速器及控制器
ACCELERATOR&CONTROLLER

1: CPD20、25 (D-C)
2: CPD20、25 (D-DA)

序号 NO.	零件图号 Part NO.	零件名称 Description	数量 Q'ty	适用车型	
				1	2
1	JSQD-244-002 GB5783 GB93 GB97.1	加速器 ACCELERATOR ASSY	1	√	
1		加速器 ACCELERATOR ASSY	1		√
2		螺栓 M8×25 BOLT M8×25	3	√	√
3		垫圈 8 WASHER SPRING 8	3	√	√
4		垫圈 8 WASHER 8	3	√	√
5	H2B	控制器 CONTROLLER-ASSY	1	√	
5	DQKC-025/031	控制器 CONTROLLER-ASSY	1		√

01-19-05 控制器支座及线缆
CONTROLLER MOUNTING & MAIN HARNESS

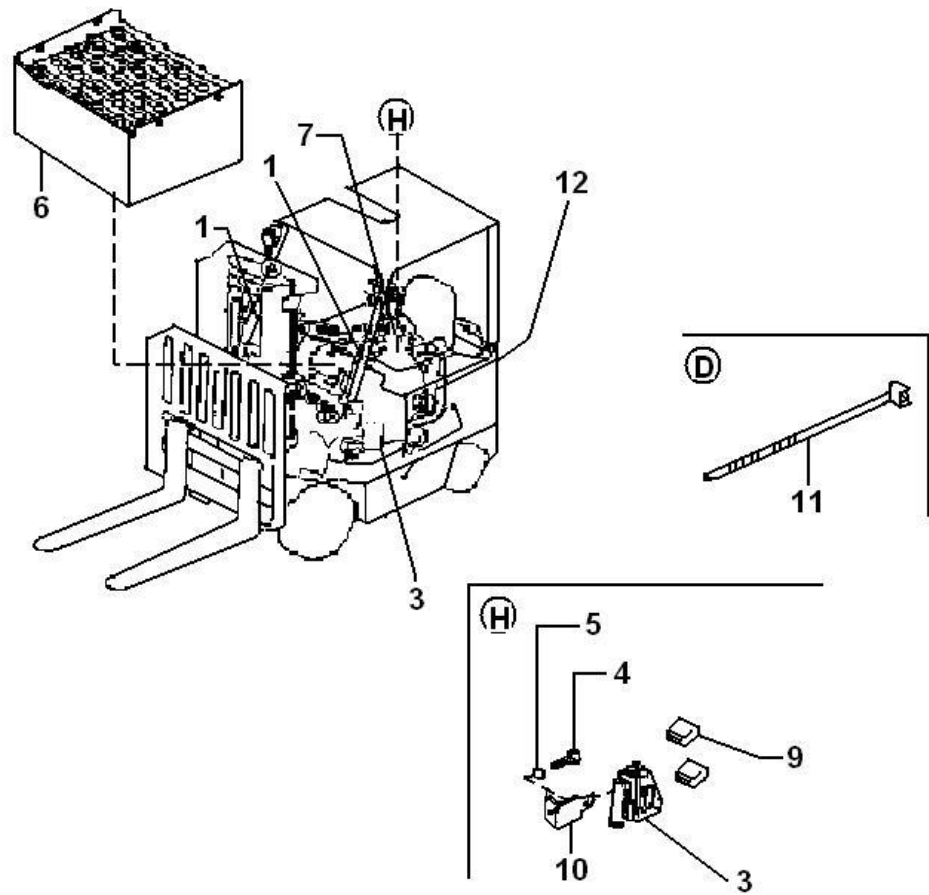


01-19-05 控制器支座及线缆
CONTROLLER MOUNTING&MAIN HARNESS

1: CPD20、25 (D-C)
2: CPD20、25 (D-DA)

序号 NO.	零件图号 Part NO.	零件名称 Description	数量 Q'ty	适用车型	
				1	2
1	25RC8080000	蓄电池电源电缆总成 ACCUMULATOR-ELECTRICAL-SOURCE-CABLE-ASSEMBLY	1	√	√
3	25RC8010000	电源电缆总成 ELECTRICAL-SOURCE CABLE-ASSEMBLY	1	√	√
4	15RA8000003	固定板 BRACKET-BATTERY PLUG	1	√	√
5	GB67	螺钉 M6×30 SCREW M6×30	2	√	√
6	GB67	螺钉 M6×16 SCREW M6×16	2	√	√
7	GB93	垫圈 6 WASHER SPRING 6	2	√	√
8	GB97.1	垫圈 6 WASHER 6	2	√	√

01-19-06 线束装配
WIRING (BODY)

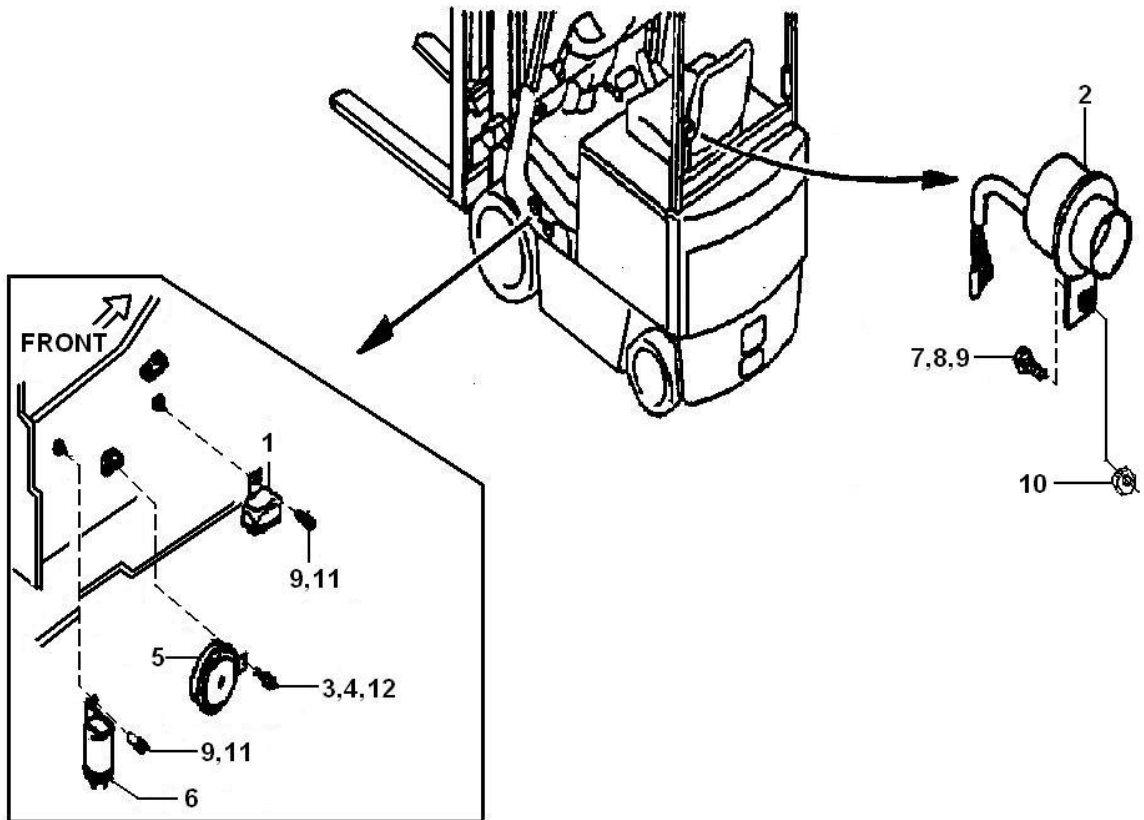


01-19-06 线束装配
WIRING (BODY)

1: CPD20、25 (D-C)
2: CPD20、25 (D-DA)

序号 NO.	零件图号 Part NO.	零件名称 Description	数量 Q'ty	适用车型	
				1	2
1	15RCA8410000	右前灯线束 RIGHT HARNESS-GUARD	1	√	√
1	15RCA8420000	左前灯及后灯线束 LEFT HARNESS-GUARD	1	√	√
3	BX2051	五路熔断器盒 FIVE FUSE BOX	1	√	
3	BX2051-1	保险丝盒 FUSE BOX	1		√
4	GB5781	螺栓 M8×12 BOLT M8×12	1	√	√
5	GB93	垫圈 8 WASHER SPRING 8	1	√	√
6	25D565	蓄电池总成 ACCUMULATOR-ASSEMBLY	1	√	√
7	25RC8040000	主线束 HARNESS ASSY-MAIN	1	√	
7	25RDA8110000	主线束 HARNESS ASSY-MAIN	1		√
8	BX2011A15A	保险丝 15A FUSE 15A	2	√	√
9	15RC8000002	保险丝盒支架 BRACKET-FUSE BLOCK	1	√	√
10	ZD100×3	尼龙扎带 NYLON CLIP	8	√	√
11	15RCA8020000	后线束 WIRING-HARNESS BACK	1	√	√

01-19-07 电气装配
ELECTRICAL UNIT

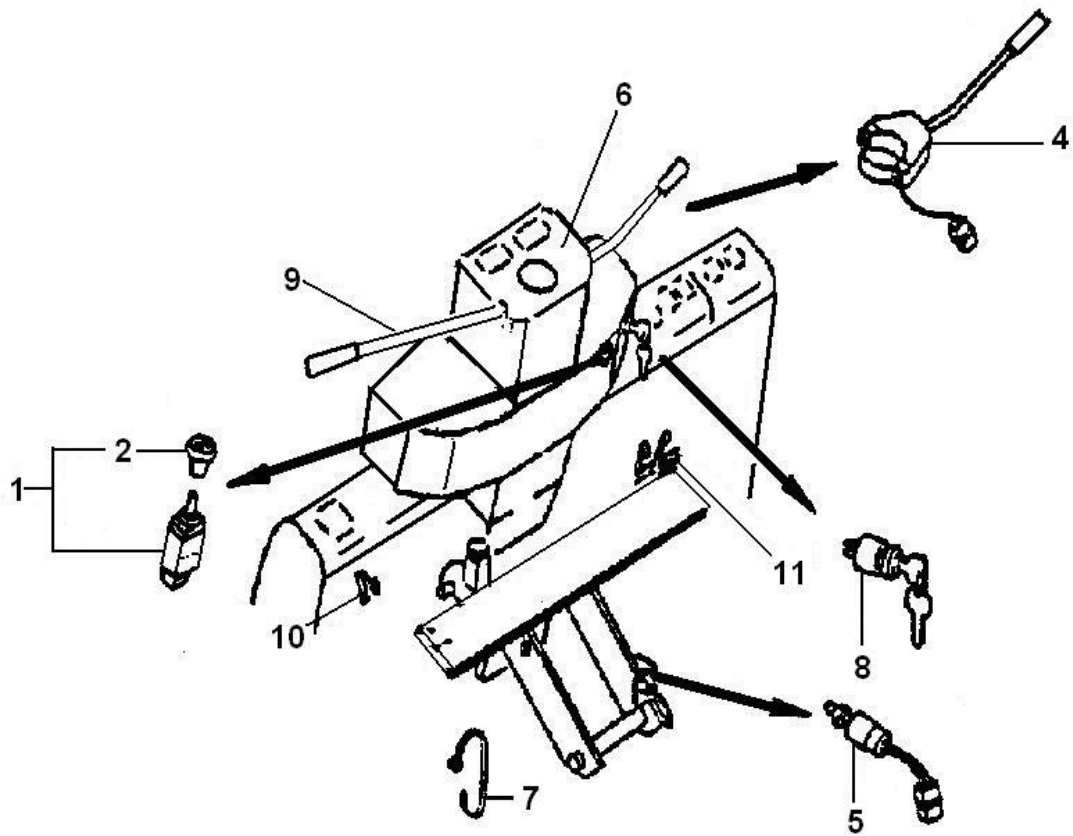


01-19-07 电气装配
ELECTRICAL UNIT

1: CPD20、25 (D-C)
2: CPD20、25 (D-DA)

序号 NO.	零件图号 Part NO.	零件名称 Description	数量 Q'ty	适用车型	
				1	2
1	JL2B-24V	喇叭继电器 BUGLE-RELAY	1	√	√
2	DJB-24B	倒车蜂鸣器 HORN ASSY-BACK	1	√	√
3	GB5781	螺栓 M8×20 BOLT M8×20	3	√	√
4	GB93	垫圈 8 WASHER SPRING 8	3	√	√
5	DL224EG	喇叭 HORN ASSY-ELECTRIC	1	√	√
6	SG252	闪光器 UNIT ASSY-FLASHER	1	√	√
7	GB67	螺钉 M6×16 SCREW M6×16	4	√	√
8	GB93	垫圈 6 WASHER SPRING 6	4	√	√
9	GB97.1	垫圈 6 WASHER 6	7	√	√
10	GB6170	螺母 M6 NUT M6	1	√	√
11	GB67	螺钉 M6×12 SCREW M6×12	3	√	√
12	GB6170	螺母 M8 NUT M8	1	√	√

01-19-08 开关及仪表总成
SWITCH&METER-ASSY

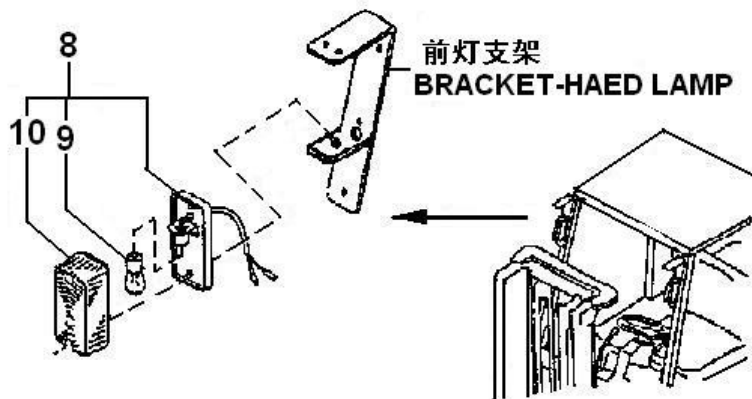
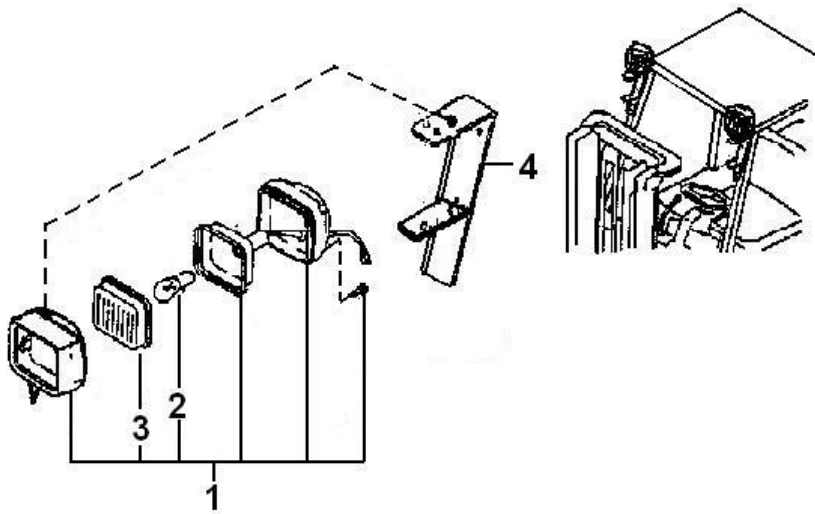


01-19-08 开关及仪表总成
SWITCH&METER-ASSY

1: CPD20、25 (D-C)
 2: CPD20、25 (D-DA)

序号 NO.	零件图号 Part NO.	零件名称 Description	数量 Q'ty	适用车型	
				1	2
1		车灯开关 SWITCH ASSY-LIGHTING	1	√	√
2		手球 KNOB-LIGHTING	1	√	√
3	JK815	转向开关 SWITCH-COMPL-TURN SIGNAL	1	√	√
4	JK205A	制动灯开关 SWITCH TRIG-LIGHTING	1	√	√
5	DC2004	组合仪表 COMBINED METER	1	√	
5	CYPE-024-Z04	组合仪表 COMBINED METER	1		√
6	ZD200×8	尼龙扎带 NYLON CLIP	4	√	√
7		起动开关 SWITCH ASSY-IGNITION	1	√	√
8	JC-3	方向开关 SWITCH ASSY-FORWARD	1	√	
8	ETCS-FXK-402	方向开关 SWITCH ASSY-FORWARD	1		√
9	KW7-2	手制动开关 HAND-BRACK SEICH	1	√	√
10	Z15G1318	油泵开关 PUMP-SWITCH	2	√	√

01-19-09 前灯及信号灯
HEAD LAMP&FRONT COMBINATION LAMP

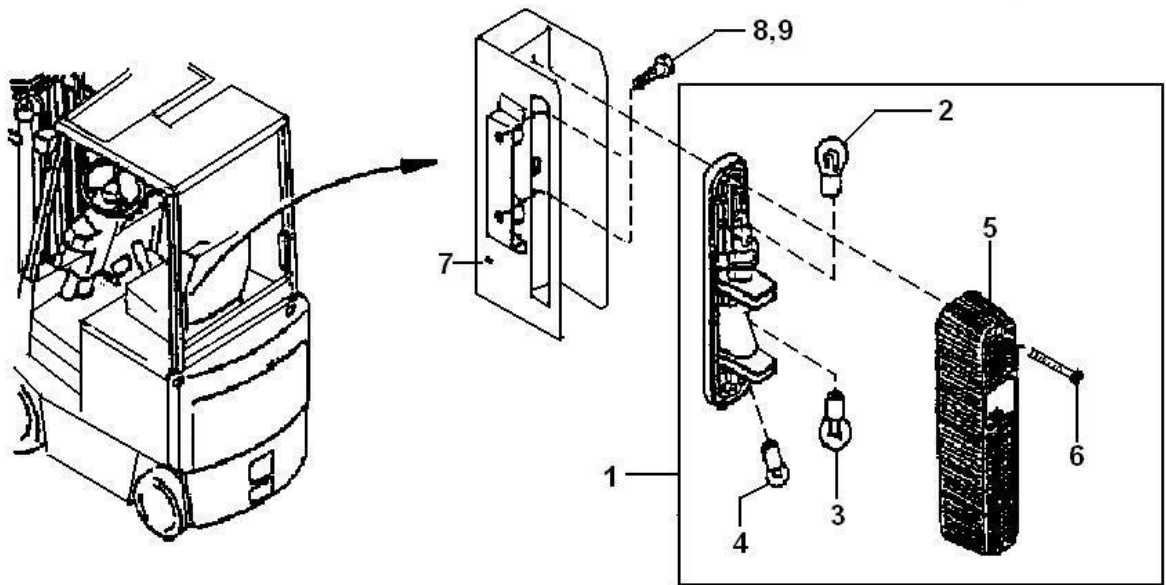


01-19-09 前灯及信号灯
HEAD LAMP&FRONT COMBINATION LAMP

1: CPD20、25 (D-C)
2: CPD20、25 (D-DA)

序号 NO.	零件图号 Part NO.	零件名称 Description	数量 Q'ty	适用车型	
				1	2
1	WD100X90/24V	前大灯 LAMP 同 ASSY-LAMP	2	√	√
2		灯泡 BULB	2	√	√
3		透镜 LENS	2	√	√
4		前灯支架 BRACKET-HEAD LAMP	2	√	√
8	QXD160X48/24V	前组合灯 LAMP ASSY-FRONT TUNE SINGNAL	2	√	√
9		灯泡 BULB	1	√	√
10		透镜 LENS	2	√	√

01-19-10 后组合灯
REAR COMBINATION LAMP



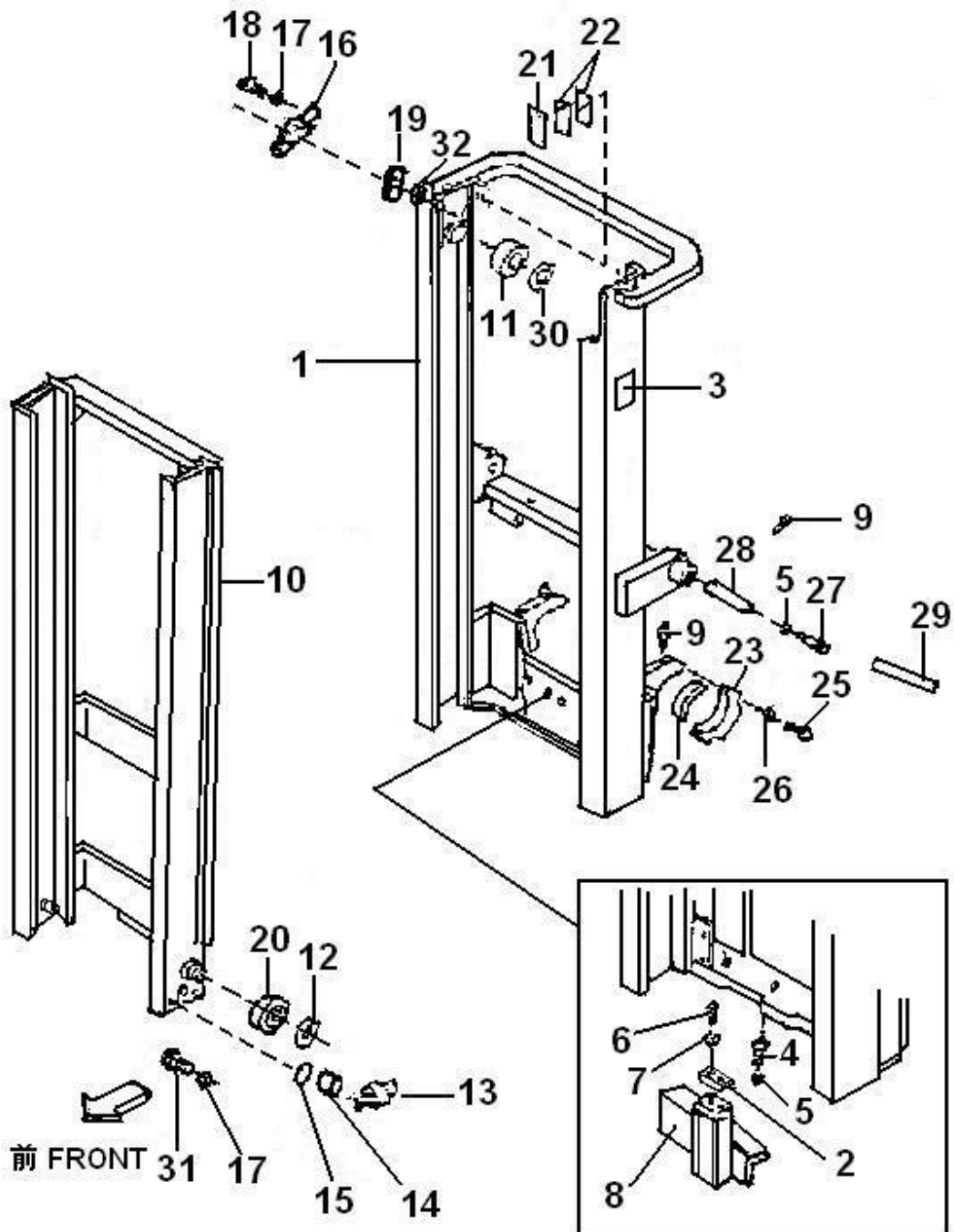
01-19-10 后组合灯
REAR COMBINATION LAMP

1: CPD20、25 (D-C)
2: CPD20、25 (D-DA)

序号 NO.	零件图号 Part NO.	零件名称 Description	数量 Q'ty	适用车型	
				1	2
1	SHD220×55/24V	后组合灯 LAMP ASSY-REAR COMBINATION	2	√	√
2		灯泡 BULB	2	√	√
3		灯泡 BULB	2	√	√
4		灯泡 BULB	2	√	√
5		透镜 LENS	2	√	√
6		螺栓 SCREW	4	√	√
7	GB5781	螺栓 M8×16 BOLT M8×16	6	√	√
8	GB93	垫圈 8 WASHER SPRING 8	6	√	√

02 门架部分

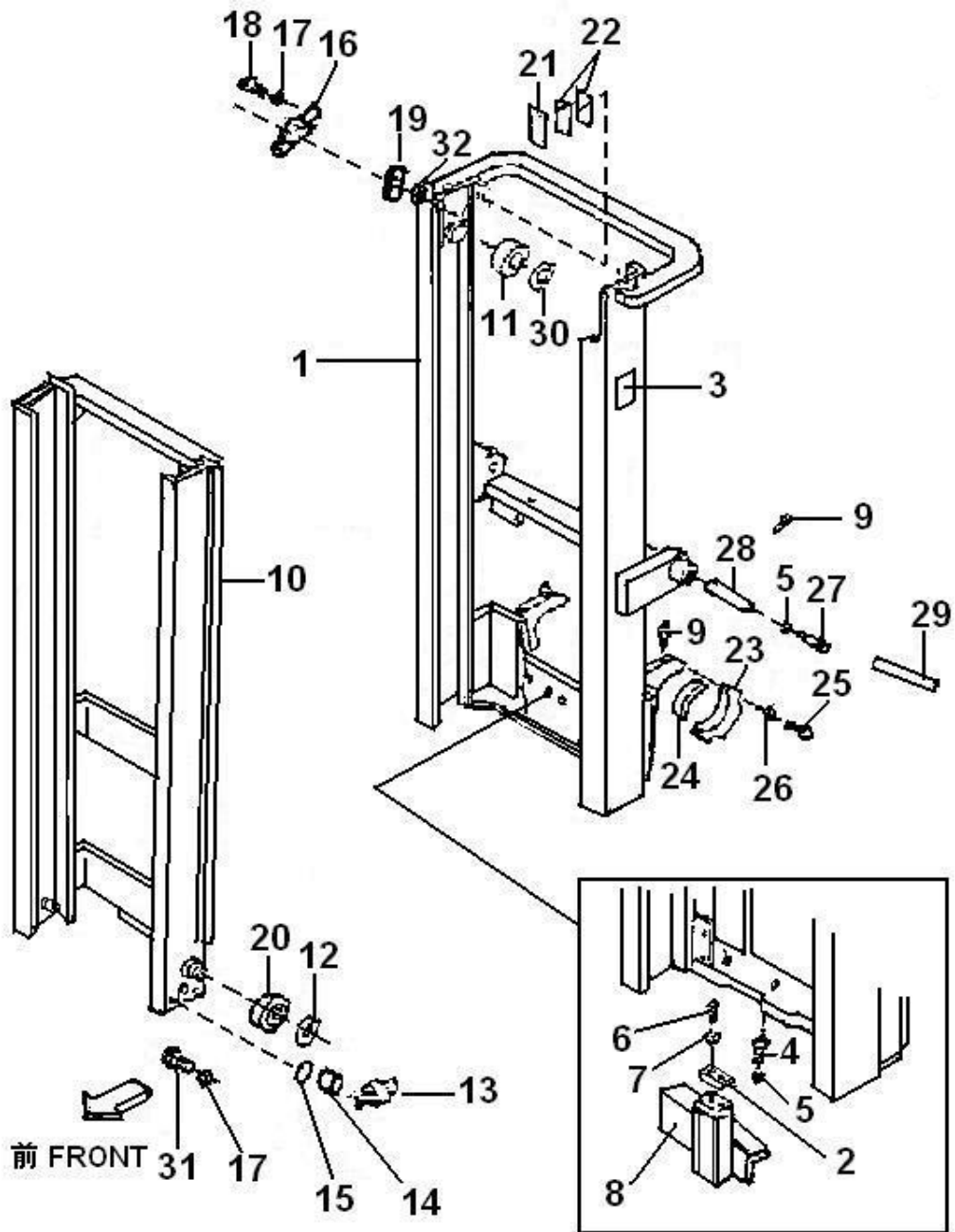
02-01-01 工作装置 (一)
LOADING SYSTEM (ONE)



02-01-01 工作装置（一）
LOADING SYSTEM（ONE）

序号 NO.	零件图号 Part NO.	零件名称 Description	数量 Q'ty
1	25RA1FA100000	外门架 MAST OUTER	1
2	30X1000008	限位块 PLATE POSITION	1
3	DCJ7.02	产品商标 FACTORY-BADGE	1
4	GB5786	螺栓 M10×1.25×30 BOLT M10×1.25×30	2
5	GB93	垫圈 10 WASHER SPRING 10	6
6	GB65	螺钉 M6×12 SCREW M6×12	2
7	GB93	垫圈 6 WASHER 6	2
8	25RA1FA120000	限位支架总成 PLATE GUARD	1
9	JB/T7940.1	油杯 M8×1 FTTING GREASE M10×1	4
10	25RA1FA200000	内门架 MAST INNER	1
11	80708K	轴承 AXLE TREE	2
12	GB894.1	挡圈 55 RING SNAP 55	2
13	L4903	侧滚轮 ROLLER	2
14	30X1200005	垫块 WASHER	2
15	30X1000013	垫圈 WASHER	2 组
16	30X1400002	轴 AXLE TREE	2
17	GB93	垫圈 12 WASHER SPRING 12	8
18	GB5786	螺栓 M12×1.25×35 BOLT M12×1.25×35	4
19	80505K	滚轮 ROLLER	2
20	980811M-00	滚轮 ROLLER	2
21	30X1010000	限位滑块 SLIPPER	2

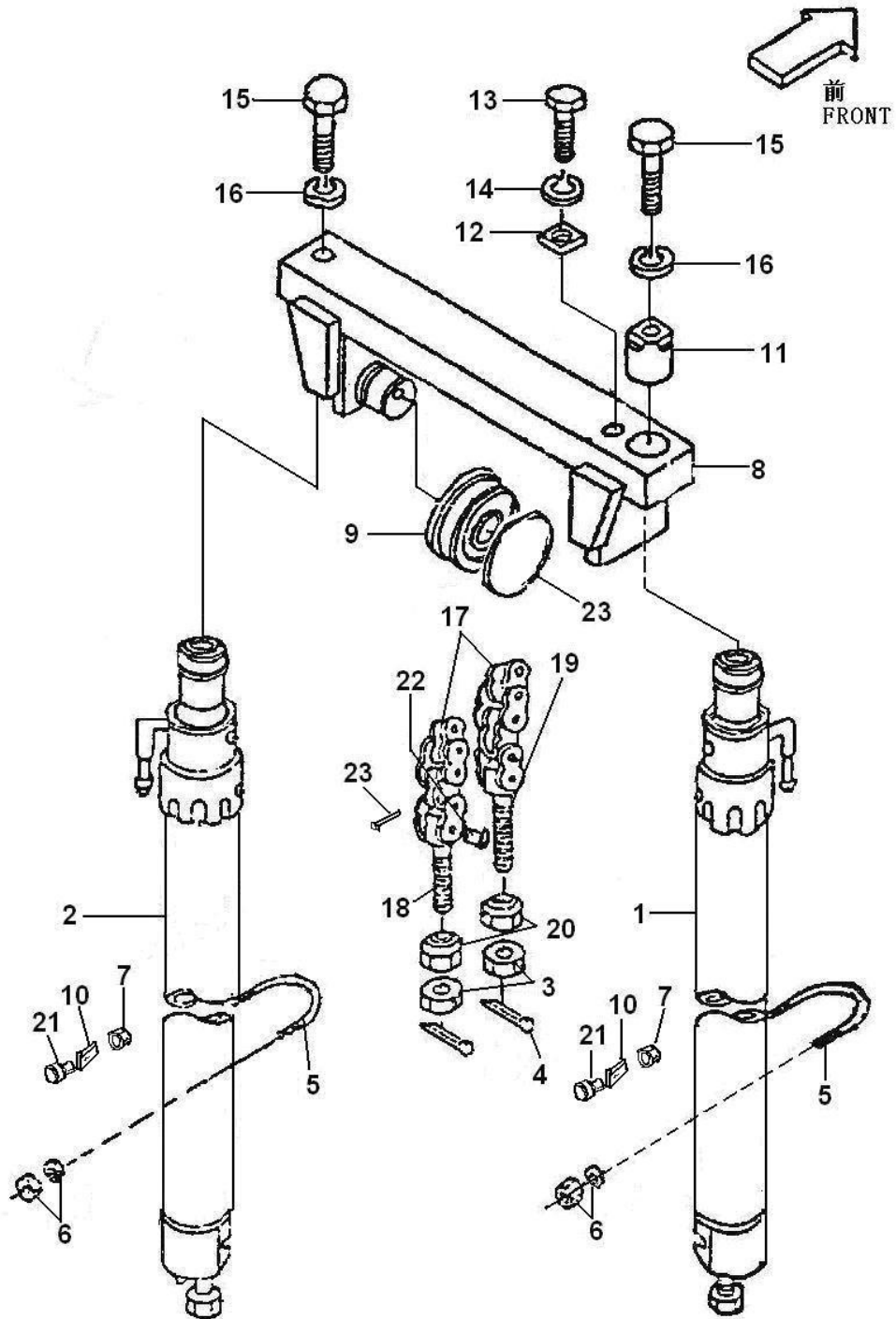
02-01-01 工作装置（一）
LOADING SYSTEM (ONE)



02-01-01 工作装置（一）
LOADING SYSTEM（ONE）

序号 NO.	零件图号 Part NO.	零件名称 Description	数量 Q'ty
22	30X1000006	垫片 SHIM	4
23	25RA1000014	瓦盖 CAP MAST SUPPORT	2
24	15RA1000015	轴衬 BUSHING	2
25	GB5785	螺栓 M16×1.5×45 BOLT M16×1.5×45	4
26	GB93	垫圈 16 WASHER SPRING 16	4
27	GB5786	螺栓 M10×1.25×20 BOLT M10×1.25×20	4
28	15RA1600000	倾斜油缸销轴总成 PIN	2
29	25RA1600000	倾斜油缸销轴总成 PIN	2
30	GB894.1	挡圈 40 RING SNAP 40	2
31	GB5786	螺栓 M12×1.25×40 BOLT M12×1.25×40	4
32	GB894.1	挡圈 25 RING SNAP 25	2

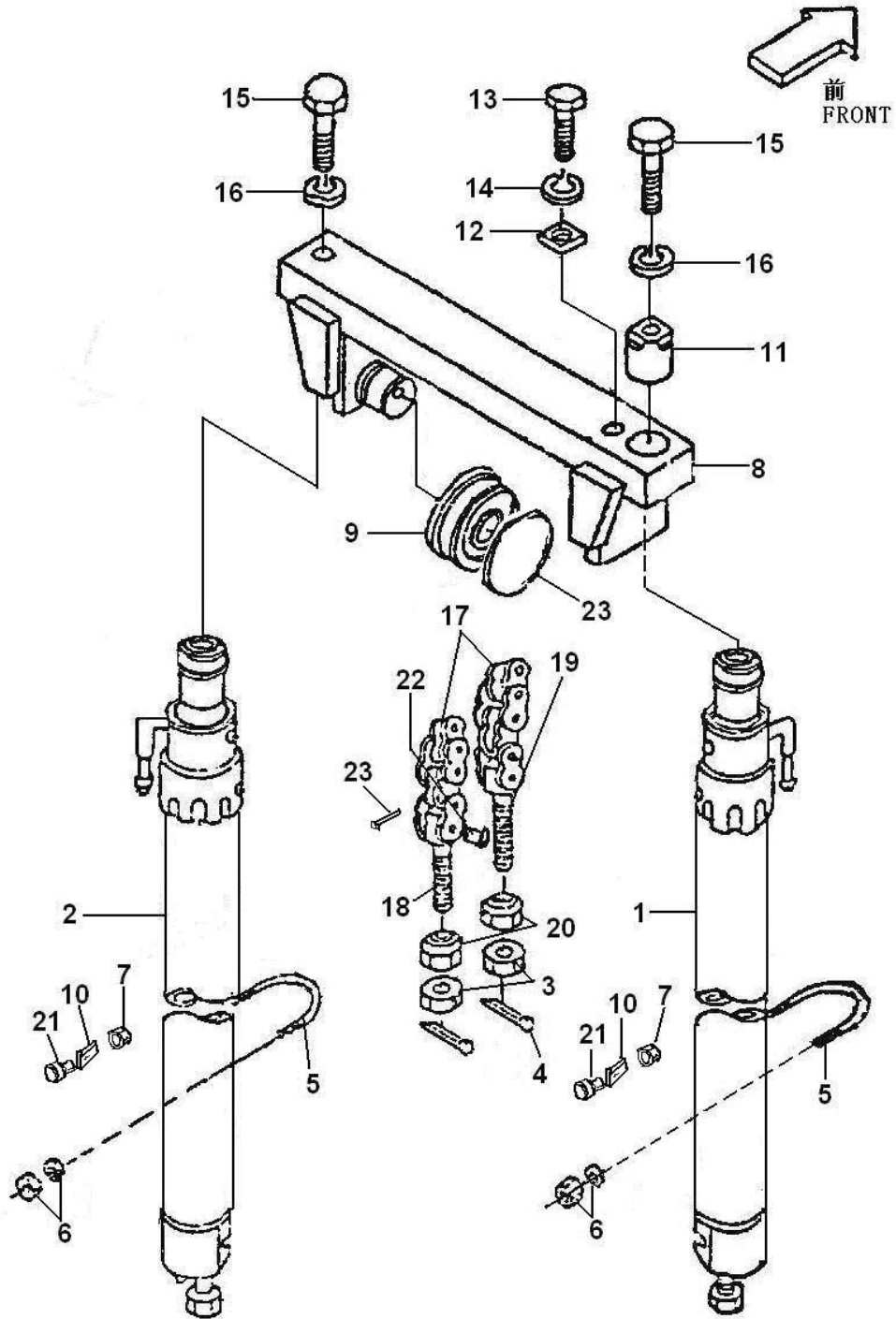
02-01-02 工作装置 (二)
LOADING SYSTEM (TWO)



02-01-02 工作装置（二）
LOADING SYSTEM（TWO）

序号 NO.	零件图号 Part NO.	零件名称 Description	数量 Q'ty
1	2.5TCMS-3000B-06-Z	左起升缸体 CLYINDER L.H	1
2	2.5TCMS-3000B-06-Y	右起升缸体 CLYINDER R.H	1
3	GB6171	螺母 M18×1.5 NUT M18×1.5	6
4	GB91	销 3.2×40 PIN 3.2×40	4
5	25RA1000011	U 型螺栓 U-BOLT	2
6	GB6171	螺母 M10×1.25 NUT M10×1.25	8
7	GB6173	螺母 M20×1.5 NUT M20×1.5	2
8	25RA1FA500000	活动梁 HEAD, PISTON	1
9	780708K	链轮 CHAIN WHEEL	2
10	15RA1000008	堵塞 PLUG	2
11	30X1000002	螺塞 PLUG, SCREW	1
12	30X1000012	卡板 PLATE, KEY	1
13	GB5786	螺栓 M12×1.25×25 BOLT M12×1.25×25	1
14	GB93	垫圈 12 WASHER SPRING 12	1
15	GB5786	螺栓 M16×1.5×50 BOLT M16×1.5×50	2
16	GB93	垫圈 16 WASHER SPRING 16	2
17	GB/T6074	链条 LH1623-（103×25.4） CHAIN LH1623-（103×25.4）	2
18	25RA1900002	链条接头 PIN, CHAIN ANCHOR	2
19	25RA1900001	链条接头 PIN, CHAIN ANCHOR	2
20	30X1900004	球形螺母 BALL-NUT	4
21	15RA1000007	调节螺栓 BOLT	2
22	30X1900002	销轴 PIN	4

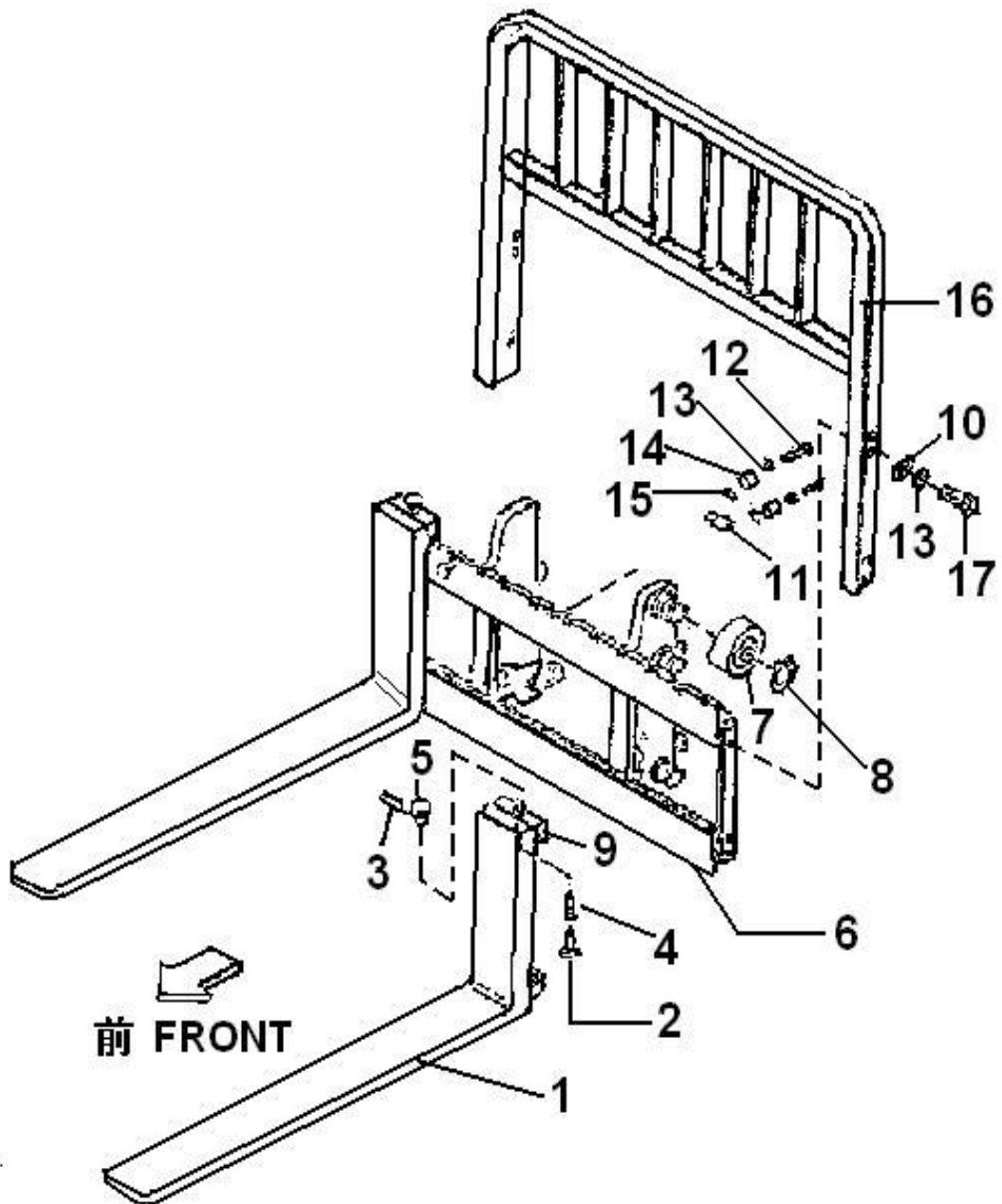
02-01-02 工作装置 (二)
LOADING SYSTEM (TWO)



02-01-02 工作装置（二）
LOADING SYSTEM（TWO）

序号 NO.	零件图号 Part NO.	零件名称 Description	数量 Q'ty
23	GB894.1	挡圈 40 RING, SNAP 40	2
24	GB91	销 3.2×20 PIN 3.2×20	4

02-01-03 工作装置 (三)
LOADING SYSTEM (THREE)



02-01-03 工作装置（三）
LOADING SYSTEM（THREE）

序号 NO.	零件图号 Part NO.	零件名称 Description	数量 Q'ty
1	20W112C1000	货叉 FORK	2
2	20W1120004	心轴 STOPPER	2
3	GB119.2	销 B4×55 PIN B4×55	2
4	20W1120001	弹簧 SPRING	2
5	20W1120003	把手 HANDLE	2
6	25RA1FA310000	货叉架体 FORK BRACKET	1
7	980811M-00	滚轮 ROLLER	6
8	GB894.1	挡圈 55 RING SNAP 55	6
9	25RA1110001	销座 PIN SET	2
10	GB93	垫圈 14 WASHER SPRING 14	8
11	L4903	侧滚轮 ROLLER	6
12	GB5786	螺栓 M12×1.25×40 BOLT M12×1.25×40	12
13	GB93	垫圈 12 WASHER SPRING 12	12
14	30XDB1FA300001	垫块 WASHER	6
15	30X1000013	垫圈 WASHER	12 组
16	25RA1800000	挡货架 BACKREST	1
17	GB5783	螺栓 M14×1.5×30 BOLT M14×1.5×30	8

02-02 倾斜油缸

整机可装配的倾斜油缸有两种：一种为陕西燎原液压件厂生产；一种为晋江池店叉车配件厂生产。您在查阅这部分的零件目录时，请先确认您的叉车上安装的是哪一种。有“燎原液压”字样标签的为陕西燎原液压件厂的倾斜油缸。有“晋江机械有限公司”字样标签的为晋江池店叉车配件厂的倾斜油缸。对应的倾斜油缸零件目录共分两部分，请注意确认。为保证准确请您在选择备件时一定要提供整机出厂编号。由此造成的不便请您见谅！

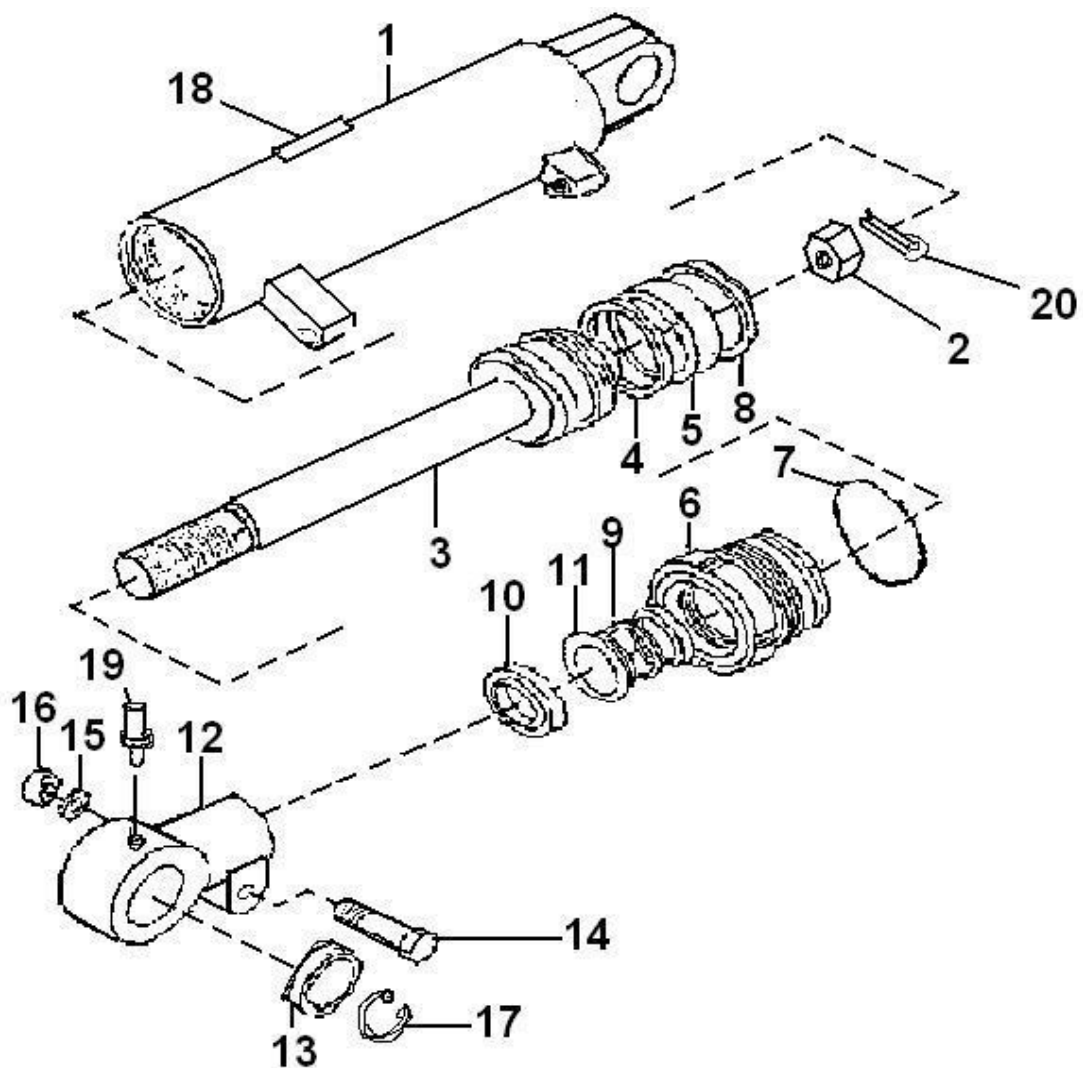
TILT CYLINDER

In this chapter, you can see two kinds of tilt cylinder and the Parts Manual of SHANXI LIAOYUAN HYDRAULIC PRESSURE CO., LTD. Another Manual of JINJIANG CHIDIAN FORKLIFT-FITTINGS FACTORY . You need to know the type of the tilt cylinder on your forklift truck, before reading this chapter. If there is a label marks the letters“燎原液压”on the cylinder body ,it is made of SHANXI LIAOYUAN HYDRAULIC PRESSURE CO., LTD. So you can read the part 2. And if there is a label marks the letters“晋江机械有限公司”on the cylinder body, it is made of JINJIANG CHIDIAN FORKLIFT-FITTINGS FACTORY. So you can read the part 1. To avoid mistake, when ordering parts, give the DALIAN forklift trucks dealer or distributor the serial number of the forklift truck .Beg your pardon for the discomfort with it !

02-02 傾斜油缸 TILT CYLINDER

燎原傾斜油缸零件目錄

LIAOYUAN TILT CYLINDER PARTS CATALOGUE



02-02 倾斜油缸
TILT CYLINDER

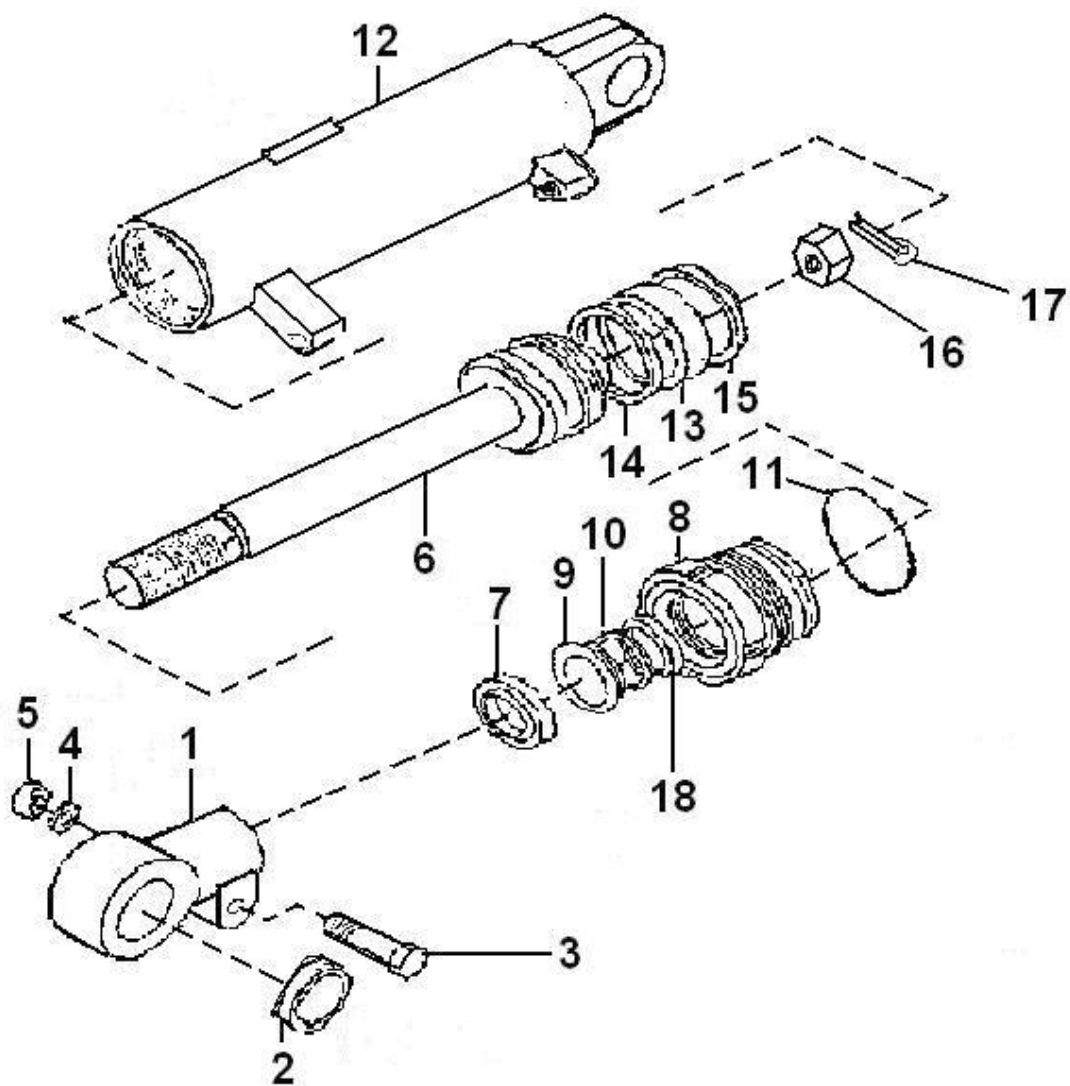
燎原倾斜油缸零件目录 (LIAOYUAN TILT CYLINDER PARTS CATALOGUE)

序号 NO.	零件图号 Part NO.	零件名称 Description	数量 Q'ty
1	DQG70/32.99-10/ZY	油缸体 (左、右) CYLINDER (L.H、 R.H)	1
2	GB9459	螺母 M24×2 NUT M24×2	2
3	DQG70/32.99-02	活塞杆 ROD, PISTON	2
4	DQG70/32.78-06	支承圈 BERAING RING	2
5	DQG70/32.78-05	活塞 PISTON	2
6	DQG70/32.78-03	导向套 GUIDE-SLEEVE	2
7	GB3452.1	O 形圈 35506300-J1 O-RING 35506300-J1	2
8	FU0846L0	OSI 密封圈 OIL PRESSURE-RING	2
9	FU2055S0	USI 密封圈 OIL PRESSURE-RING	2
10	FQ0568C1	LBI 防尘圈 LBI SEAL DUST	2
11	GB3452.1	O 形圈 26503250-J1 O-RING 26503250-J1	4
12	DQG70/32.100-01	杆头 POLE TOP	2
13	GB304.5	关节轴承 GE30ES JOINT- AXLE TREE GE30ES	2
14	GB5782	螺栓 M14×50 BOLT M14×50	2
15	GB93	垫圈 14 WASHER SPRING 14	2
16	GB6170	螺母 M14 NUT M14	2
17	GB893.1	挡圈 47 RING SNAP 47	4
18	-3	标牌 SCUTCHEON	2
19	JB/T7940.1	油杯 M10×1 GREASE CUP M10×1	2
20	GB91	销 5×50 PIN 5×50	2

02-02 倾斜油缸
TILT CYLINDER

晋江倾斜油缸零件目录

JINJIANG TILT CYLINDER PARTS CATALOGUE



02-02 倾斜油缸
TILT CYLINDER

晋江倾斜油缸零件目录 (JINJIANG TILT CYLINDER PARTS CATALOGUE)

序号 NO.	零件图号 Part NO.	零件名称 Description	数量 Q'ty
1	CQG70/32×99-01	接杆头 POLE TOP	2
2	GB9163	关节轴承 GB30ES JOINT- AXLE TREE GB30ES	2
3	GB5780	螺栓 M14×50 BOLT M14×50	2
4	GB93	弹性垫圈 14 WASHER SPRING 14	2
5	GB41	螺母 M14 NUT M14	2
6	CQG70/32×99-03	活塞杆 ROD, PISTON	2
7	CY129-1997	防尘圈 d32 SEAL DUST d32	2
8	CQG70/32×99-04	导向套 GUIDE-SLEEVE	2
9	GB1235	O 形圈 38×3.5 O-RING 38×3.5	2
10	GB1235	O 形圈 70×5.7 O-RING 70×5.7	2
11	D232	轴用 Y 型密封圈 32×42×6 Y-RING 32×42×6	2
12	CQG70/32×99-05	油缸体 (左、右) CYLINDER (L.H、 R.H)	2
13	CQG70/32×99-06	活塞体 PISTON	2
14	DAS70	孔用组合圈 DAS70 HOLE COMBINED-RING DAS70	1
15	GB1235	O 形圈 37×3.1 O-RING 37×3.1	2
16	GB9457	开槽螺母 M24×1.5 NOTCH NUT M24×1.5	2
17	GB91	开口销 4×36 UNCORK PIN 4×36	2
18	SF-1	钢背轴承 32×36×25 AXLE TREE 32×36×25	2

02-03 举升油缸

整机可装配的举升油缸有两种：一种为陕西燎原液压件厂生产；一种为晋江池店叉车配件厂生产。您在查阅这部分的零件目录时，请先确认您的叉车上安装的是哪一种。有“燎原液压”字样标签的为陕西燎原液压件厂的举升油缸。有“晋江机械有限公司”字样标签的为晋江池店叉车配件厂的举升油缸。对应的举升油缸零件目录共分两部分，请注意确认。为保证准确请您在选择备件时一定要提供整机出厂编号。由此造成的不便请您见谅！

LIFT CYLINDER

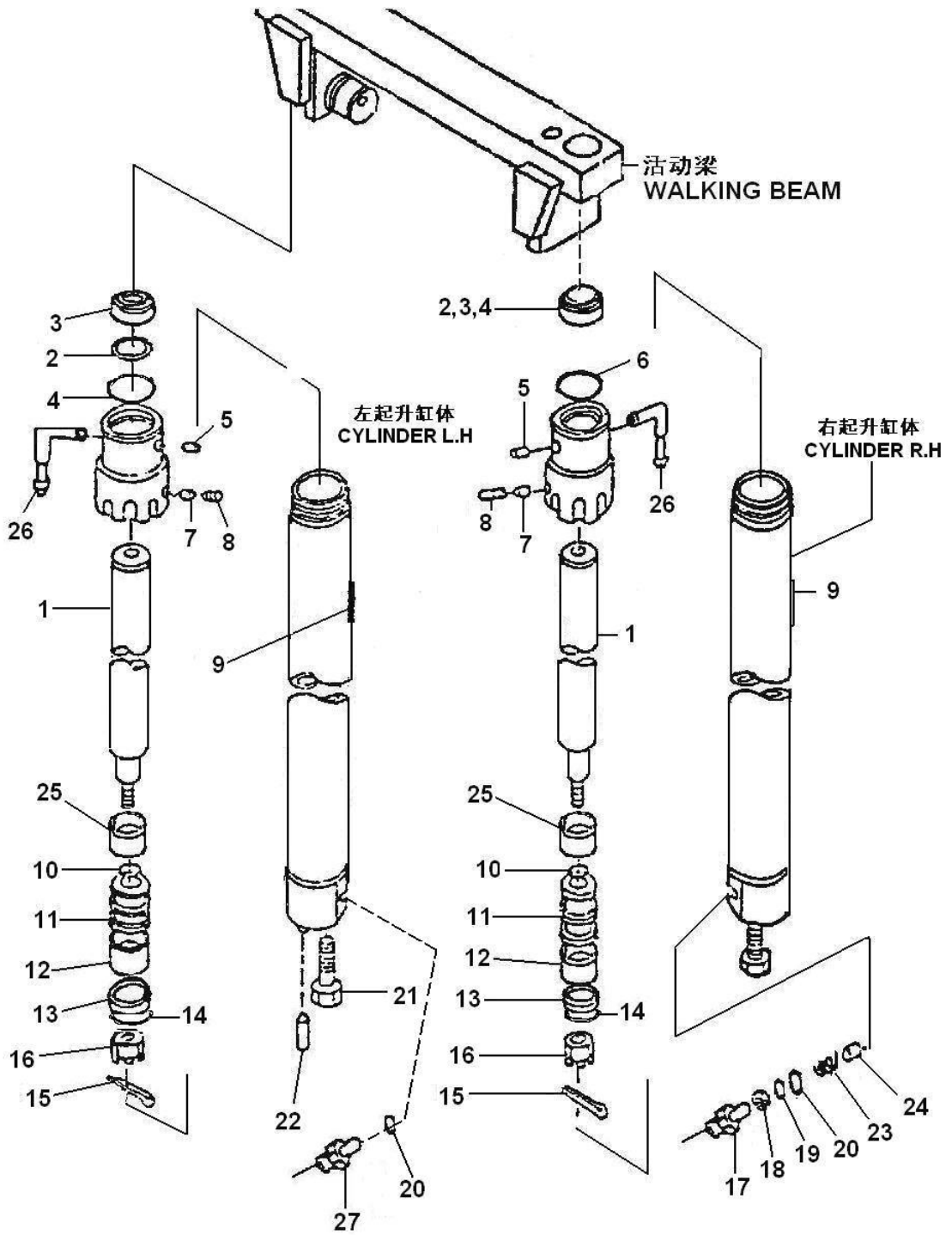
In this chapter, you can see two kinds of lift cylinder and the Parts Manual of SHANXI LIAOYUAN HYDRAULIC PRESSURE CO., LTD. Another Manual of JINJIANG CHIDIAN FORKLIFT-FITTINGS FACTORY . You need to know the type of the lift cylinder on your forklift truck, before reading this chapter. If there is a label marks the letters“燎原液压”on the cylinder body ,it is made of SHANXI LIAOYUAN HYDRAULIC PRESSURE CO., LTD. So you can read the part 2. And if there is a label marks the letters“晋江机械有限公司”on the cylinder body, it is made of JINJIANG CHIDIAN FORKLIFT-FITTINGS FACTORY. So you can read the part 1. To avoid mistake, when ordering parts, give the DALIAN forklift trucks dealer or distributor the serial number of the forklift truck .Beg your pardon for the discomfort with it !

02-03 起升油缸

LIFT CYLINDER

燎原举升油缸零件目录

LIAOYUAN LIFT CYLINDER PARTS CATALOGUE



02-03 起升油缸 LIFT CYLINDER

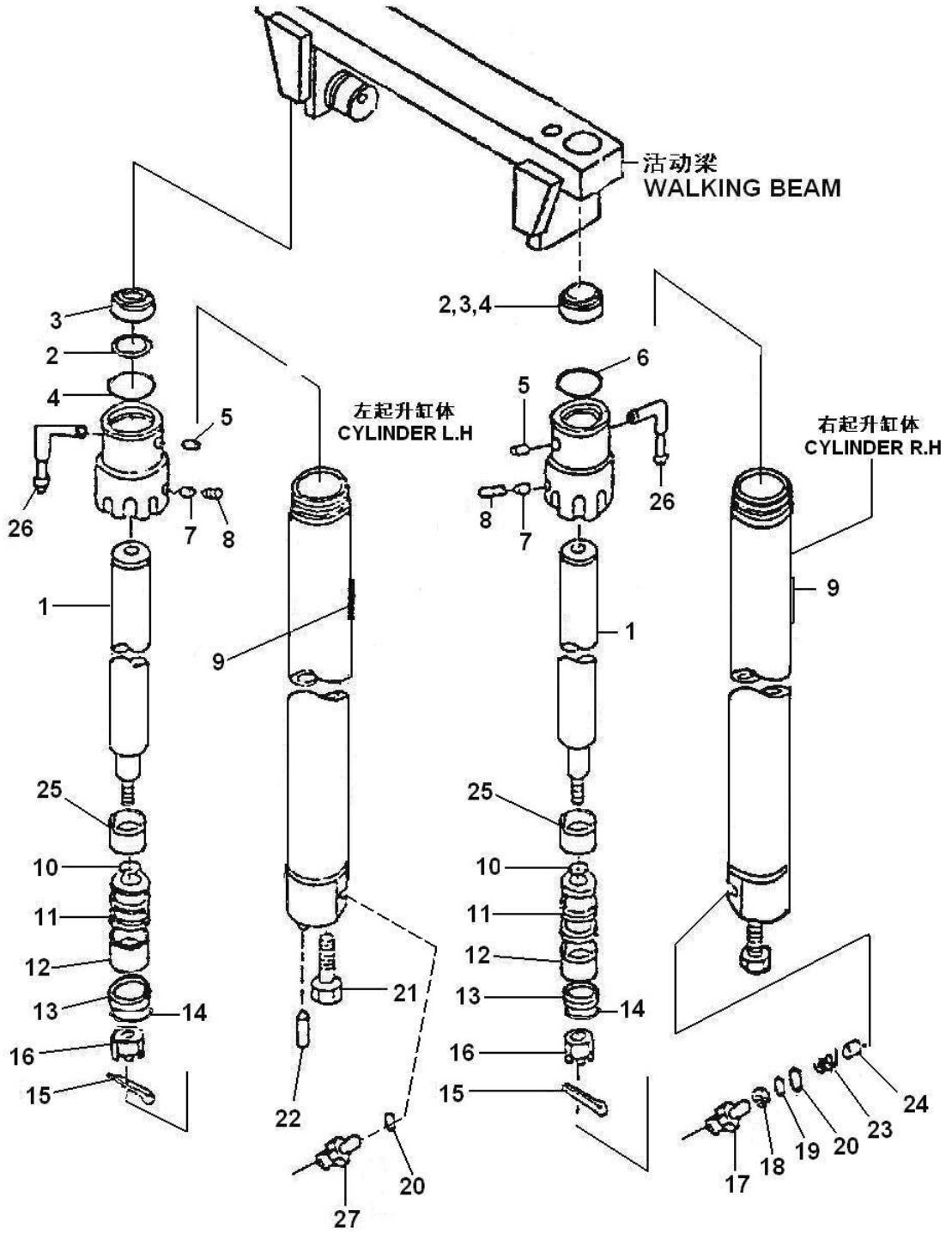
燎原举升油缸零件目录 (LIAOYUAN LIFT CYLINDER PARTS CATALOGUE)

序号 NO.	零件图号 Part NO.	零件名称 Description	数量 Q'ty
1	2.5DCS-SB-01	活塞杆 ROD, PISTON	2
2	AR2342E5	DKB 型防尘圈 SEAL, DUST	2
3	2.5DCS-S-02	缸盖 CAP, CYLINDER	2
4	FU0497K0	ISI 型密封圈 ISI-RING	2
5	Q/11AJ08.7-90	堵塞 PLUG	2
6	GB3452.1	O 形圈 35505600-J1 O-RING 35505600-J1	2
7	Q/11AJ08.6-90	垫子 CUSHION	4
8	GB80	螺钉 M6×8 BOLT M6×8	4
9	-3	标牌 SCUTCHEON	2
10	50Q/11AJ08.8-90	活塞 PISTON	2
11	GB3452.1	O 形圈 35502500-J1 O-RING 35502500-J1	2
12	50Q/11AJ08.9-90	支承圈	2
13	FU0613L0	OSI 型密封圈 OSI-RING	2
14	50Q/11AJ08.10-90	保护圈	2
15	GB91	销 4×40 PIN 4×40	2
16	GB9459	螺母 M18×1.5 NUT M18×1.5	2
17	15W-3000-01	管嘴 FITTING	1
18	15W-3000-04	压紧螺母 COMPACTION-NUT	1
19	15W-3000-03	垫圈 WASHER	1
20	16A4-175-17×2.5	O 型圈 O-RING	2
21	35Q/11AJ08.15-90	螺钉 BOLT	2
22	Q/11AJ08.16-90	销子 PIN	2
23	Q/11AJ08.12-90	弹簧 SPRING	1
24	1.8Q/11AJ08.13-90	滑阀 SLIDING SLEEVE	1
25	2.5DCS-SB-03	限位套 LIMIT-PLACE SHEATH	2

02-03 起升油缸 LIFT CYLINDER

燎原举升油缸零件目录

LIAOYUAN LIFT CYLINDER PARTS CATALOGUE



02-03 起升油缸
LIFT CYLINDER

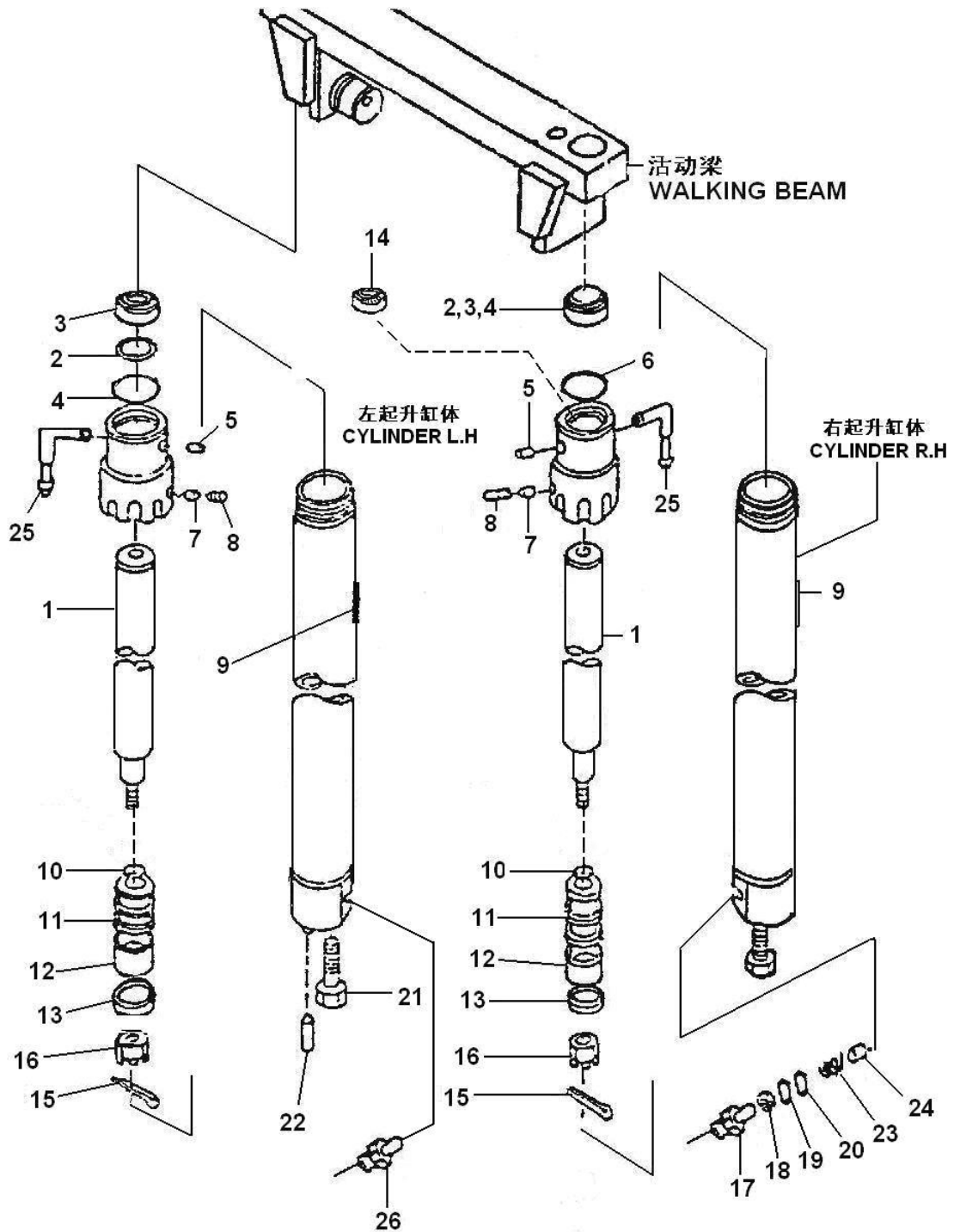
療原举升油缸零件目录 (LIAOYUAN LIFT CYLINDER PARTS CATALOGUE)

序号 NO.	零件图号 Part NO.	零件名称 Description	数量 Q'ty
26	Q/11AJ08.5-90	油嘴	2
27	2.5DCS-SB-02/Z	油嘴	1

02-03 起升油缸 LIFT CYLINDER

晋江举升油缸零件目录

JINJIANG LIFT CYLINDER PARTS CATALOGUE

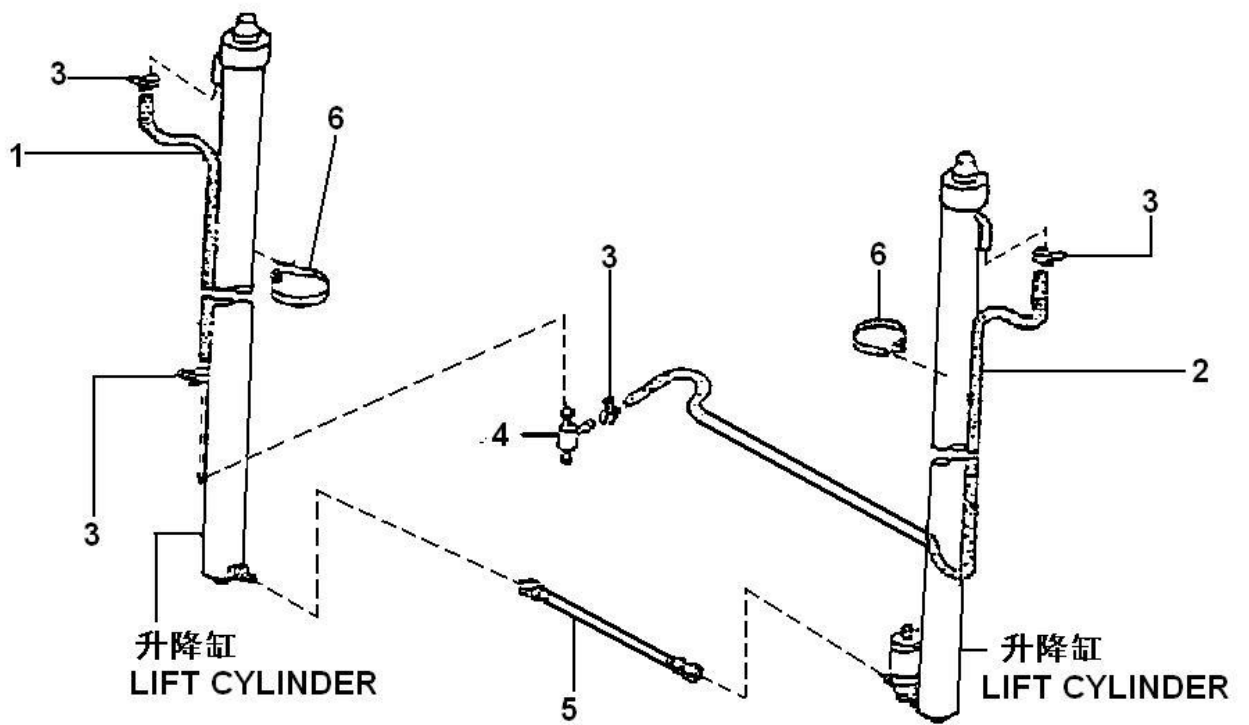


02-03 起升油缸 LIFT CYLINDER

晋江举升油缸零件目录 (JINJIANG LIFT CYLINDER PARTS CATALOGUE)

序号 NO.	零件图号 Part NO.	零件名称 Description	数量 Q'ty
1	2.5TCMS-3000B-01-ZY	活塞杆 ROD, PISTON	2
2	DKB	铁壳防尘圈 d40 SEAL, DUST d40	2
3	2.5TCMS-3000-03-ZY	缸盖 CAP, CYLINDER	2
4	D240	轴用 Y 形圈 40×50×6 Y-RING 40×50×6	2
5	2.5TCMS-3000-02-ZY	堵塞 PLUG	2
6	GB1235-76	O 形圈 63×3.1 O-RING 63×3.1	2
7		垫子 CUSHION	2
8	GB67	螺钉 M6×8 BOLT M6×8	2
9		标牌 SCUTCHEON	2
10	2.5TCMS-3000-04-ZY	活塞 PISTON	2
11	GB3452.1	O 形圈 25×3.55 O-RING 25×3.55	2
12	2.5TCMS-3000-05	支承环 BUSHING	2
13	D1	Y 型圈 50×40×6 Y-RING 50×40×6	2
14	SF-1	钢背轴承 40×44×25 ROLLER 40×44×25	2
15	GB91	销 4×50 PIN 4×50	2
16	GB9459	螺母 M18×1.5 NUT M18×1.5	2
17	15W-3000-01	管嘴	1
18	15W-3000-11	螺母 M20×1.5 NUT M20×1.5	1
19	15W-3000-03	垫圈	1
20	GB3452.1	O 形圈 17×2.5 O-RING 17×2.5	2
21	GB5786	螺栓 M12×1.25×40 BOLT M12×1.25×40	2
22	GB119	销子 φ10×30 PIN φ10×30	2
23	2.5TCMS-3000-08	弹簧 SPRING	1
24	2.5TCMS-3000-09	滑阀 SLIDING SLEEVE	1
25	2.5TCMS-3000-10	管嘴 R1/4" FITTING R1/4"	2
26	15W-3000-02-Z	管嘴	1

02-04 门架管路
HYDRAULIC OIL PIPING



02-04 门架管路
HYDRAULIC OIL PIPING

序号 NO.	零件图号 Part NO.	零件名称 Description	数量 Q'ty
1	GB/T13527.1	软聚氯乙烯管 LS-12×1.5×1100 HOSE-RUBBER LOW PRESSURE LS-12×1.5×1100	1
2	GB/T13527.1	软聚氯乙烯管 LS-12×1.5×1600 HOSE-RUBBER LOW PRESSURE LS-12×1.5×1600	1
3	JB/ZQ3777	喉箍 13-20 CLAMP-HOSE 13-20	6
4	15RA7040000	三通接头 PIPE ASSY-RETURN	1
5	JB1887	胶管接头 10II—280 HOSE ASSY-LIFT 10II—280	1
6	ZD300×8	紧固带 CLAMP-BAND	6

电气原理图 electric principle

