
* FIRST EDITION : FEBRUARY 2011

©2011 NISSAN FORKLIFT CO., LTD.

All Rights Reserved. No part of this publication may be reproduced in any form without the prior written permission of the publisher.

1. REMARKS ON THE PARTS CATALOG

This parts catalog has the information on the spare parts for TD42 engine, going back to October 2008 when the TD42 engine was introduced.

Please note that the contents of this parts catalog are subject to change, deletion, and non-sale without prior notice.

Please note that this parts catalog does not indicate how to service forklift trucks.

Whether all or partial, photocopying is prohibited without prior consent of Nissan.

2. ENGINE MODELS HEREIN

Model No.	Applied Model	Start of Production	Specification
1	10100-4K10B	October, 2008	TD42

3. CATALOG APPLIED

The symbol and abbreviation are used in this particular note space as follows.

However, the supplier type and the general name are not indicated on this list.

Catalog Applied	Meaning	Example	Catalog Applied	Meaning	Example
*	Optional Equipment		CUT USE	Cut Use	L=120 CUT USE
AR	As Required		STD	Standard	STD
-A	Ampere	10A	T=~	Thickness (mm)	T=0.01
-C	Temperature	82C	US=~	Under Size (mm)	US=0.25
D=	Diameter (mm)	D=10	~V	Volts	12V
F/~	Exclusive Use	F/GAS	W/~	With	W/RUB
~KW	Kilowatt, Electric power	2.3KW	W/O~	Without	W/O RUB
L=	Length (mm)	L=910	Z=~	Number of Gear Teeth	Z=17
OS=~	Oversize (mm)	OS=0.50	GRADE~	Grade	GRADE 1
SELECT	Selection Use	SELECT L=19.5	FR	Front	F/FR
			RR	Rear	F/RR
SELECT USE	Proper Use	SELECT USE	RH	Right	F/RH
			LH	Left	F/LH

GENERAL INDEX

A ENGINE MECHANICAL

B FUEL & ENGINE CONTROL

C EXHAUST & COOLING

D ENGINE ELECTRICAL

ALPHA. PART NAME INDEX

PART NO. INDEX

SECTION INDEX

[A] ENGINE MECHANICAL

SEC. NO.	SECTION NAME	PAGE NO.
101	BARE & SHORT ENGINE	4
102	ENGINE GASKET KIT	6
110	CYLINDER BLOCK & OIL PAN	8
111	CYLINDER HEAD & ROCKER COVER	10
117	FAN,COMPRESSOR & POWER STEERING BELT	12
118	CRANK CASE VENTILATION	14
120	PISTON,CRANKSHAFT & FLYWHEEL	16
130	CAMSHAFT & VALVE MECHANISM	18
135	FRONT COVER & FITTING	20
140	MANIFOLD	22
150	LUBRICATING SYSTEM	24

[B] FUEL, ENGINE & MOTOR CONTROL

SEC. NO.	SECTION NAME	PAGE NO.
185	FUEL SUPPLY SYSTEM	28
186	FUEL INJECTION PUMP	30

[C] EXHAUST & COOLING

SEC. NO.	SECTION NAME	PAGE NO.
210	WATER PUMP, COOLING FAN & THERMOSTAT.....	36
213	OIL COOLER	38

[D] ENGINE ELECTRICAL

SEC. NO.	SECTION NAME	PAGE NO.
220	IGNITION SYSTEM	42
230	ALTERNATOR FITTING	44
231	ALTERNATOR	46
233	STARTER MOTOR	48

GROUP INDEX

ENGINE MECHANICAL

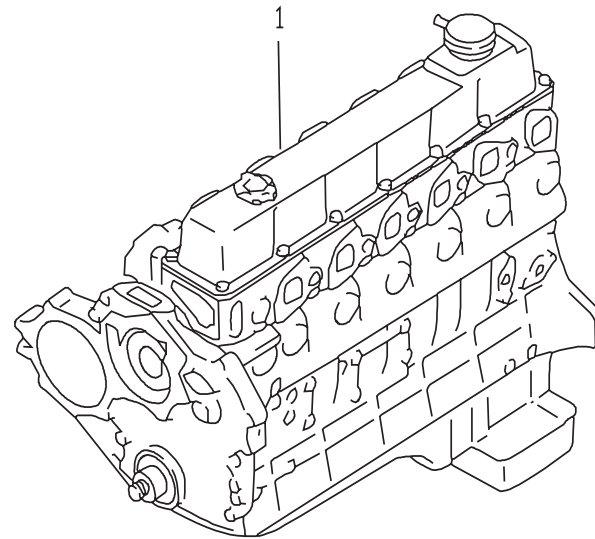
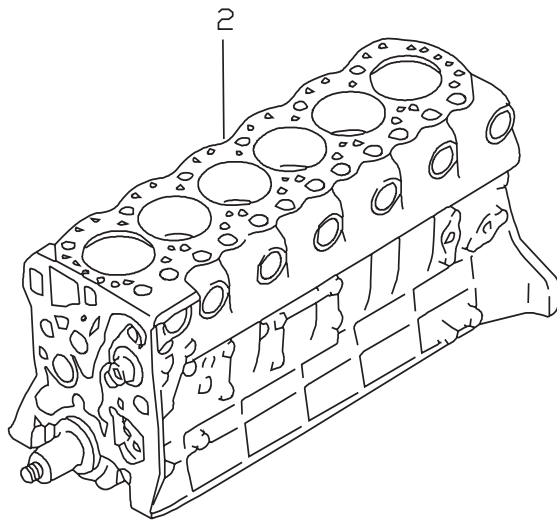
SEC. NO.	SECTION NAME	PAGE NO.
101	BARE & SHORT ENGINE	4
102	ENGINE GASKET KIT	6
110	CYLINDER BLOCK & OIL PAN	8
111	CYLINDER HEAD & ROCKER COVER	10
117	FAN,COMPRESSOR & POWER STEERING BELT	12
118	CRANK CASE VENTILATION	14
120	PISTON,CRANKSHAFT & FLYWHEEL	16
130	CAMSHAFT & VALVE MECHANISM	18
135	FRONT COVER & FITTING	20
140	MANIFOLD	22
150	LUBRICATING SYSTEM	24

A

SEC. 101

BARE & SHORT ENGINE

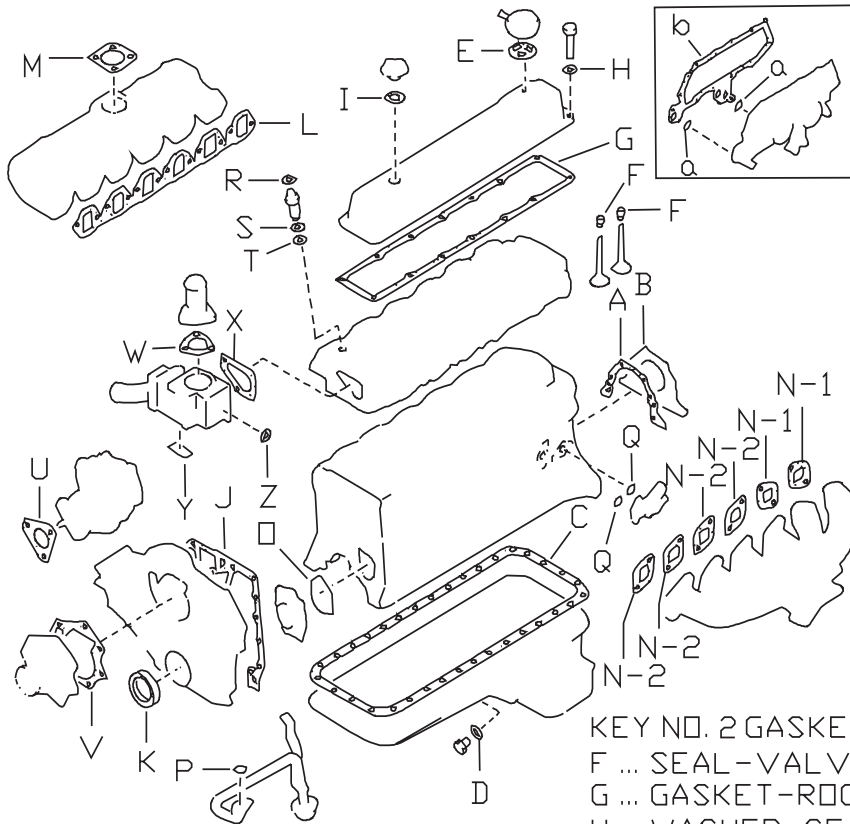
[200810-]



POTD4A310101_A

SEC. 102 ENGINE GASKET KIT

[200810-]



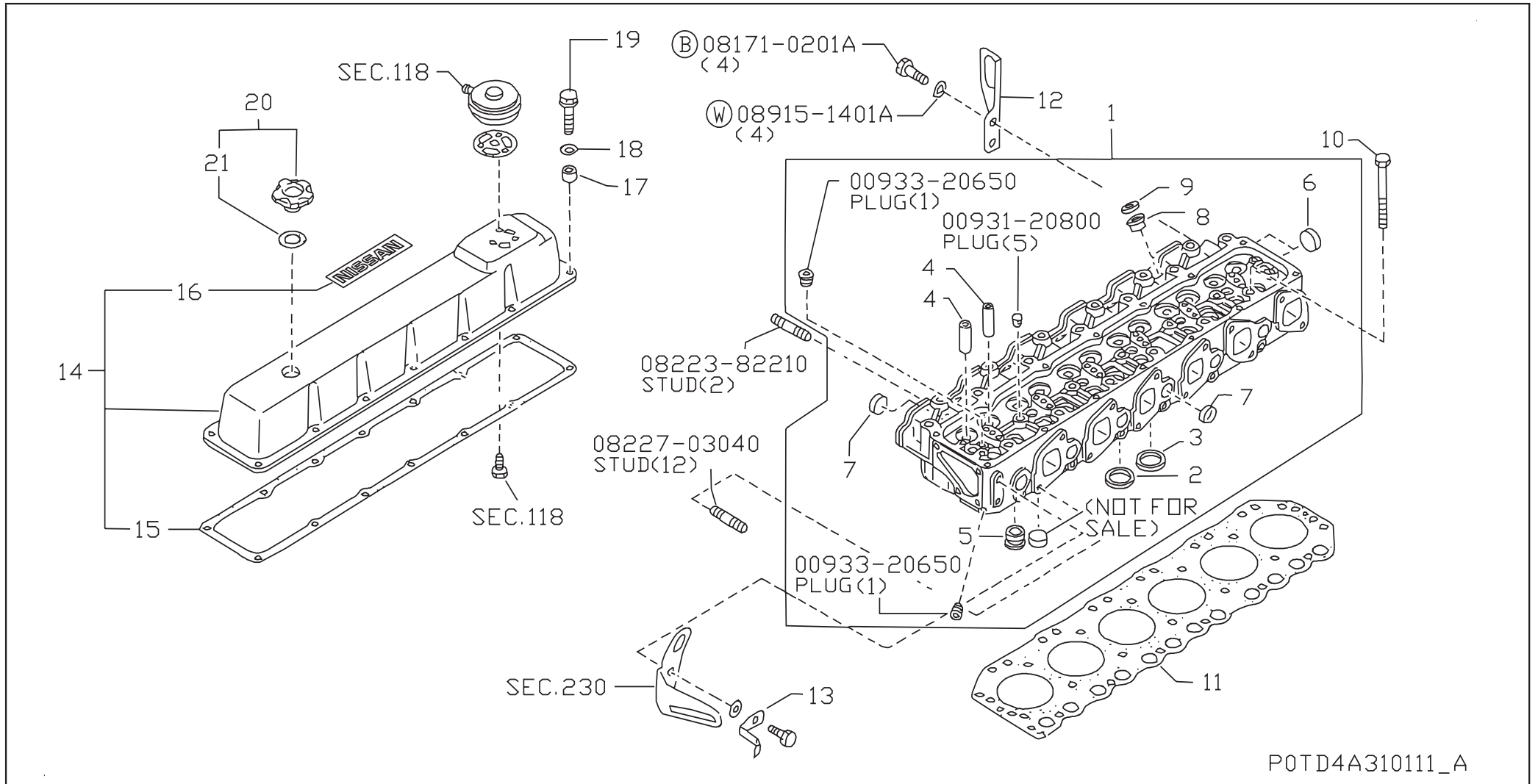
- NOTE; KEY NO. 1 GASKET KIT-ENGINE REPAIR
- A ... GASKET-RETAINER -----1
 - B ... SEAL-OIL CRANK REAR -----1
 - C ... GASKET-OIL PAN -----1
 - D ... WASHER-DRAIN PLUG-----1
 - E ... GASKET-AIR CONTROL VALVE ---1
 - F ... SEAL-VALVE -----12
 - G ... GASKET-ROCKER COVER -----1
 - H ... WASHER-SEAL -----14
 - I ... PACKING-OIL FILLER CAP -----1
 - J ... GASKET-FRONT PLATE -----1
 - K ... SEAL-OIL CRANK FRONT-----1
 - L ... GASKET-MAMIFOLD INTAKE -----1
 - M ... GASKET-VENTURI -----1
 - N-1 ... GASKET-EXHAUST MANIFOLD --2
 - N-2... GASKET-EXHAUST MANIFOLD --4
 - Q ... GASKET-OIL PUMP -----1
 - P ... SEAL-O RING -----1
 - Q ... SEAL-O RING -----2
 - R ... GASKET-NOZZLE -----6
 - S ... WASHER-NOZZLE -----6
 - T ... GASKET-NOZZLE TOP -----6
 - U ... GASKET-INJECTION PUMP -----1
 - V ... GASKET-WATER PUMP -----1
 - W ... GASKET-OUTLET -----1
 - X ... GASKET-THERMO HOUSING -----1
 - Y ... SEAL-O RING -----1
 - Z ... GASKET-THERMO SWITCH -----1
 - α ... O RING, OIL FILTER BRACKET-----2
 - β ... GASKET-OIL COOLER -----1

- KEY NO. 2 GASKET KIT-VALVE REGRIND
- F ... SEAL-VALVE -----12
 - G ... GASKET-ROCKER COVER -----1
 - H ... WASHER-SEAL -----14
 - I ... PACKING-OIL FILLER CAP -----1
 - L ... GASKET-MAMIFOLD INTAKE -----1
 - M ... GASKET-VENTURI -----1
 - N-1 ... GASKET-EXHAUST MANIFOLD --2
 - N-2... GASKET-EXHAUST MANIFOLD --4

P0TD4A310102_A

SEC. 111 CYLINDER HEAD & ROCKER COVER

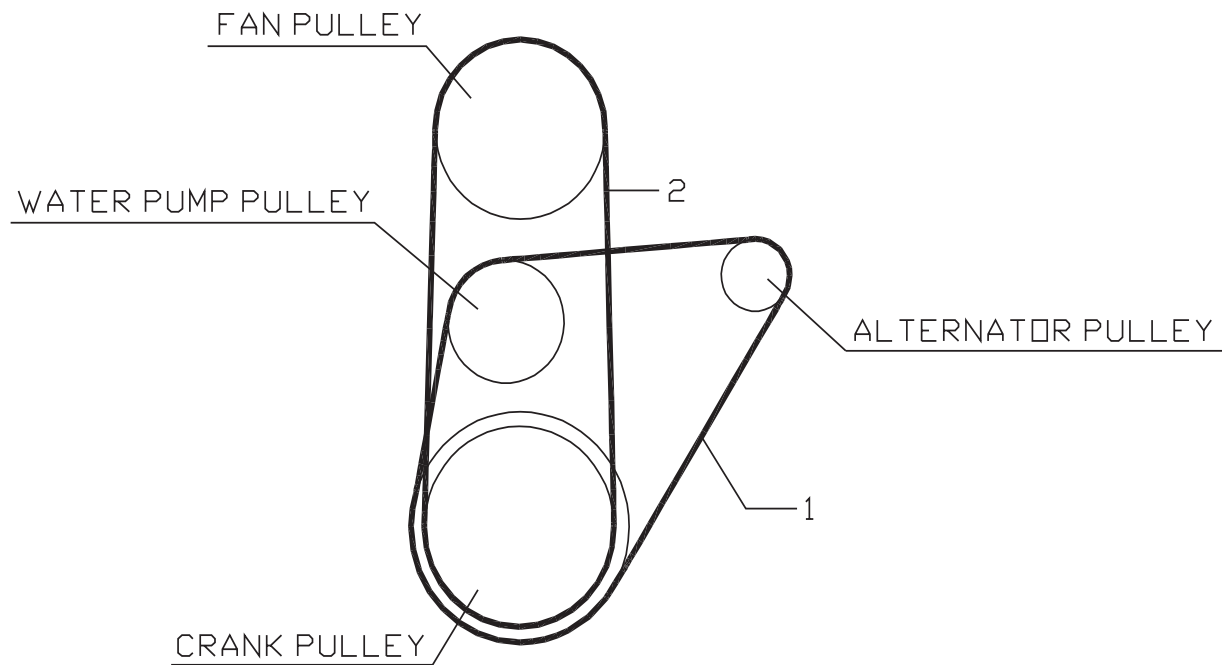
[200810-]



POTD4A310111_A

SEC. 117
FAN,COMPRESSOR & POWER STEERING BELT

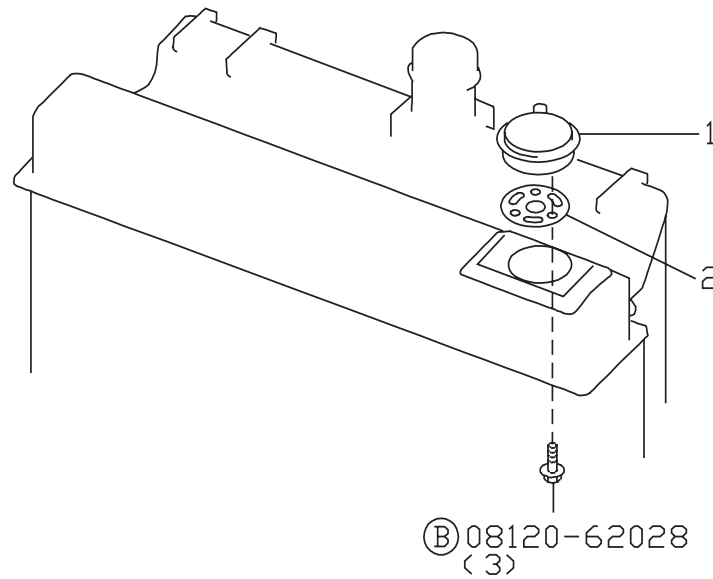
[200810-]



P0TD4A310117_A

SEC. 118 CRANK CASE VENTILATION

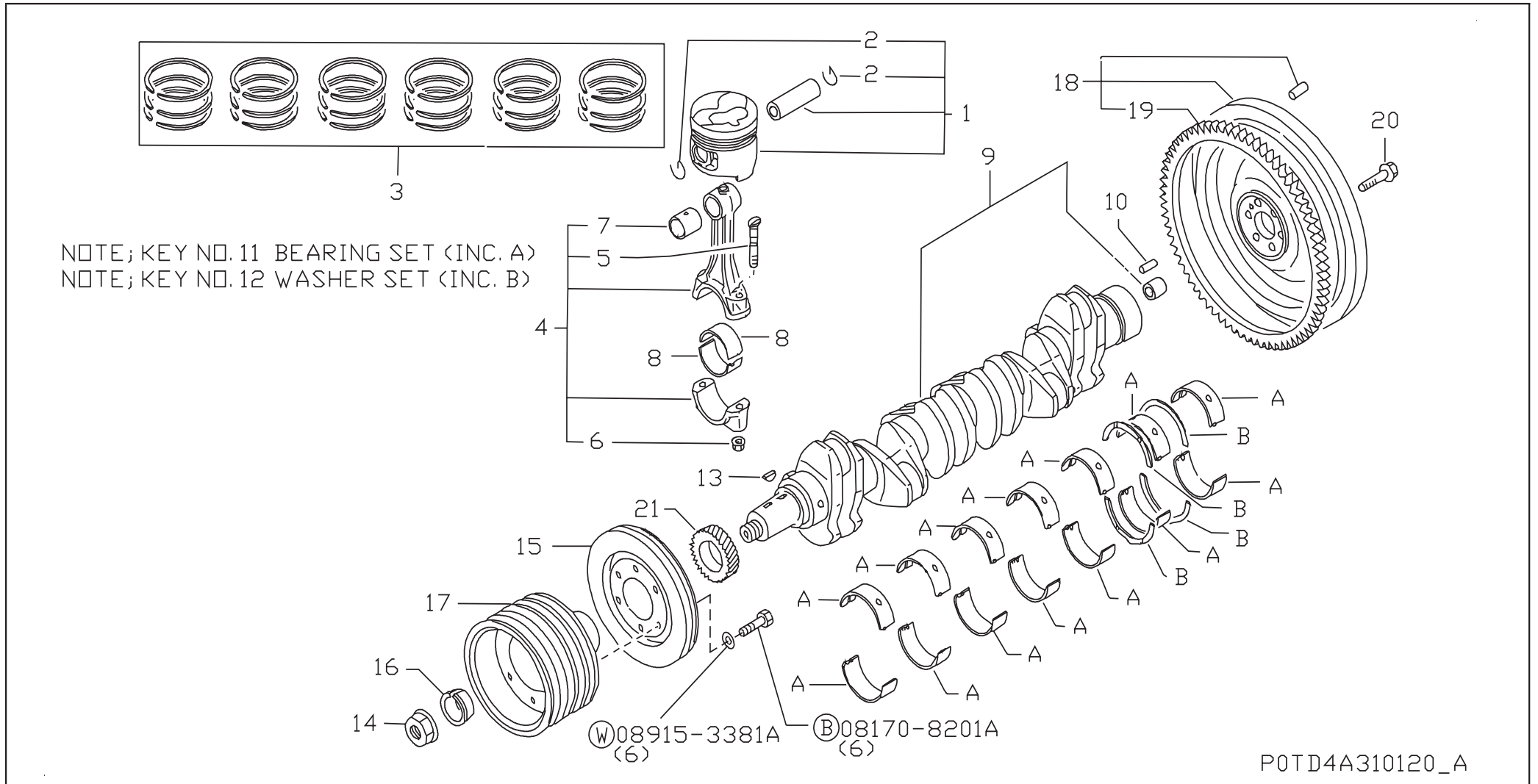
[200810-]



P0TD4A310118_A

SEC. 120 PISTON, CRANKSHAFT & FLYWHEEL

[200810-]

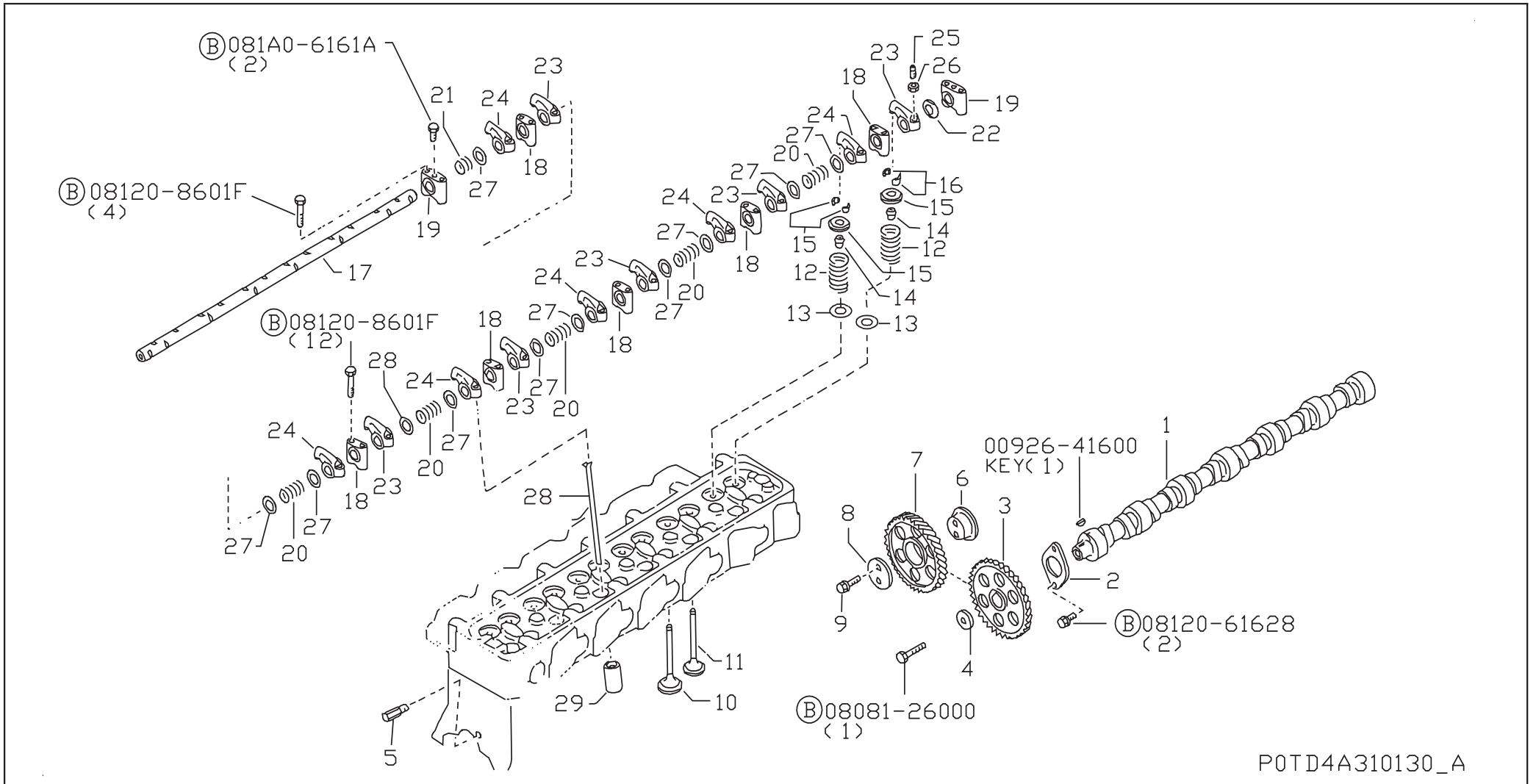


SEC. 120 PISTON,CRANKSHAFT & FLYWHEEL

APPLIED MODEL																																							
1 0 1 0 0 4 K 1 0 B																																							
S	KEY NO.	LEV	PART NO.	PART NAME	SPECIFICATION	QTY	APPLIED DATE	ICANF	FORMER PART NO.	01	02	03	04	05	06	07	08	09	10	11	12	13	14	15	16	17	18	19	20	21	22	23	24	25	26	27	28	29	30
	1 001 1		12010-6T005	PISTON,W/PIN	GRADE1	06	0810-			○																													
	002 1		-6T015		GRADE2	06	0810-			○																													
	2 001 2		12032-54T00	RING-SNAP,PISTON PIN		12	0810-			○																													
	3 001 1		12033-06J16	RING SET-PISTON		01	0810-			○																													
	4 001 1		12100-0W802	ROD COMPL-CONNECTING		06	0810-			○																													
	5 001 2		12109-43G00	BOLT-CONNECTING ROD		12	0810-			○																													
	6 001 2		12112-43G00	NUT-CONNECTING ROD		12	0810-			○																													
	7 001 2		12030-31N00	BUSHING		06	0810-			○																													
	8 001 1		12111-2W20A	BEARING-CONNECTING ROD	STD	12	0810-			○																													
	002 1		12117-2W20A		US=0.25	12	0810-			○																													
	003 1		12118-2W20A		US=0.50	12	0810-			○																													
	004 1		12119-2W20A		US=0.75	12	0810-			○																													
	005 1		12120-2W20A		US=1.00	12	0810-			○																													
	9 001 1		12201-06J01	CRANKSHAFT ASSY		01	0810-			○																													
	10 001 1		01522-10224	PIN-DOWEL		01	0810-			○																													
	11 001 1		12207-WJ10B	BEARING SET-CRANKSHAFT	STD	01	0810-			○																													
	002 1		12209-WJ10B		US=0.25	01	0810-			○																													
	003 1		12210-WJ10B		US=0.50	01	0810-			○																													
	004 1		12211-WJ10B		US=0.75	01	0810-			○																													
	005 1		12212-WJ10B		US=1.00	01	0810-			○																													
	12 001 1		12280-37525	WASHER SET-THRUST	STD T=2.325	02	0810-			○																													
	002 1		-37526		STD T=2.350	02	0810-			○																													
	003 1		-37527		STD T=2.375	02	0810-			○																													
	004 1		-37528		OS=0.20	02	0810-			○																													
	005 1		-37529		OS=0.40	02	0810-			○																													
	13 001 1		12205-76200	KEY-CRANKSHAFT		02	0810-			○																													
	14 001 1		12309-51H00	NUT		01	0810-			○																													
	15 001 1		12306-06J01	DUMPER-CRANK		01	0810-			○																													
	16 001 1		12307-06J00	BUSH-CRANK PULLEY		01	0810-			○																													
	17 001 1		12305-L9062	PULLEY-CRANKSHAFT		01	0810-			○																													
	18 001 1		12310-GLO0A	FLYWHEEL ASSY		01	0810-			○																													
	19 001 2		12312-0T00A	GEAR-RING		01	0810-			○																													
	20 001 1		12316-L2001	BOLT-FLYWHEEL		07	0810-			○																													
	21 001 1		13021-43G01	GEAR-CRANKSHAFT		01	0810-			○																													

SEC. 130 CAMSHAFT & VALVE MECHANISM

[200810-]



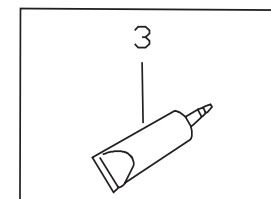
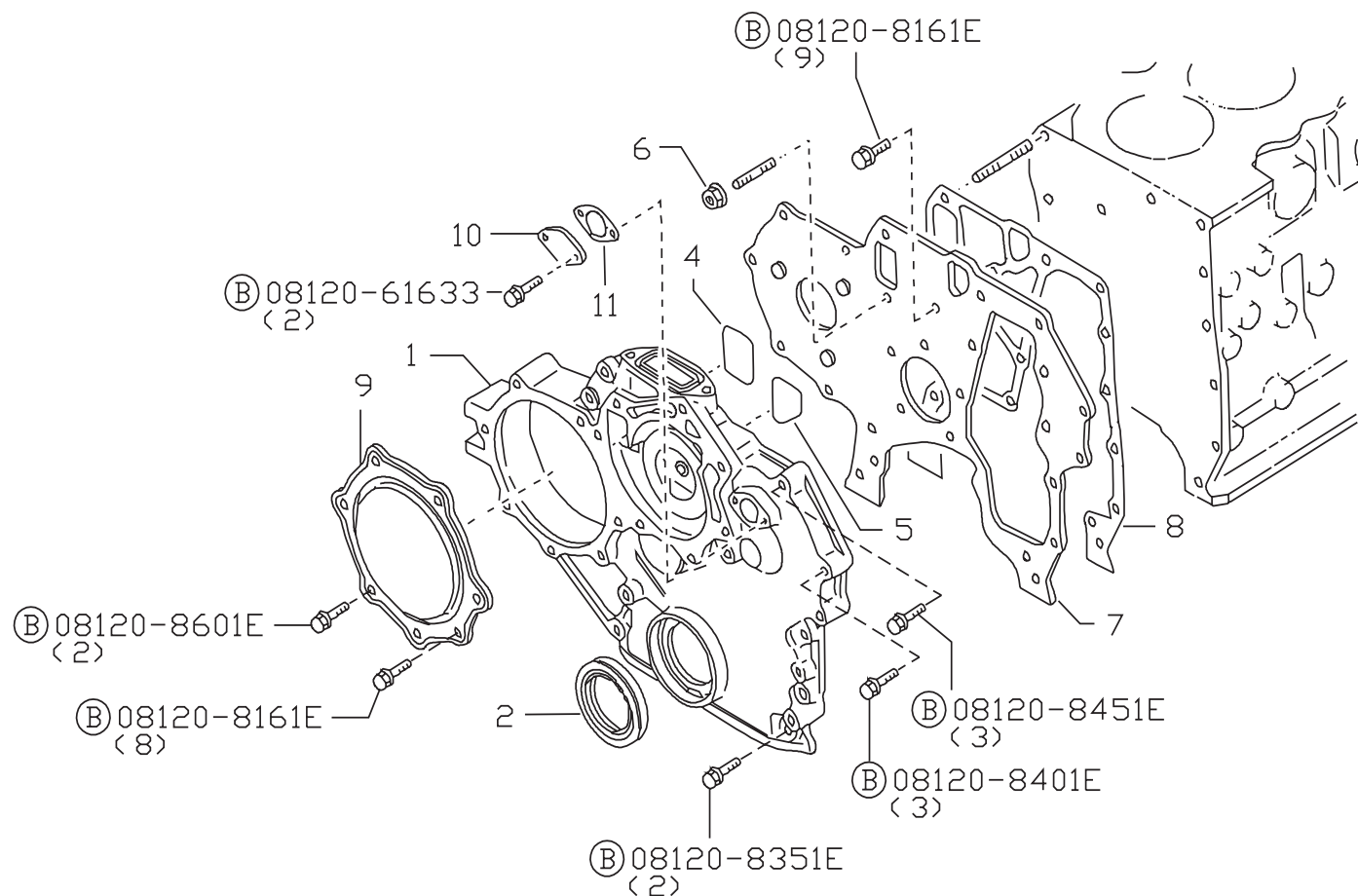
P0TD4A310130_A

SEC. 130 CAMSHAFT & VALVE MECHANISM

APPLIED MODEL																			
1	0	0	0	0	0	0	0	0	0	1	1	1	1	1	1	1	1	2	2
0	0	0	0	0	0	0	0	0	0	0	0	0	0	0	0	0	0	0	0
4	0	0	0	0	0	0	0	0	0	0	0	0	0	0	0	0	0	0	0
K	0	0	0	0	0	0	0	0	0	0	0	0	0	0	0	0	0	0	0
1	0	0	0	0	0	0	0	0	0	0	0	0	0	0	0	0	0	0	0
0	0	0	0	0	0	0	0	0	0	0	0	0	0	0	0	0	0	0	0
B	0	0	0	0	0	0	0	0	0	0	0	0	0	0	0	0	0	0	0
S	KEY NO.	LEV	PART NO.	PART NAME	SPECIFICATION	QTY	APPLIED DATE	ICANF	FORMER PART NO.	0	0	0	0	0	0	0	0	0	0
	1 001	1	13001-51N00	CAMSHAFT ASSY		01	0810-			0									
	2 001	1	13010-06J00	PLATE-LOCATING, CAMSHAFT		01	0810-			0									
	3 001	1	13024-51N00	GEAR-CAMSHAFT		01	0810-			0									
	4 001	1	13030-51N00	WASHER-CAM SPROCKET		01	0810-			0									
	5 001	1	13081-76202	JET-OIL, TIMING CHAIN		01	0810-			0									
	6 001	1	13016-43G0A	SHAFT-IDLER SPROCKET		01	0810-			0									
	7 001	1	13012-43G01	GEAR-IDLER		01	0810-			0									
	8 001	1	13011-43G00	PLATE-IDLER GEAR		01	0810-			0									
	9 001	1	01121-00724	BOLT		02	0810-			0									
	10 001	1	13201-43G01	VALVE-INTAKE		06	0810-			0									
	11 001	1	13202-43G01	VALVE-EXHAUST		06	0810-			0									
	12 001	1	13203-54T01	SPRING-VALVE		12	0810-			0									
	13 001	1	13206-31N00	SEAT-SPRING LOWER		12	0810-			0									
	14 001	1	13207-V170A	SEAL-OIL VALVE STEM		12	0810-			0									
	15 001	1	13209-43G01	RETAINER-VALVE SPRING		12	0810-			0									
	16 001	1	13208-Z5500	ROTATOR-VALVE		24	0810-			0									
	17 001	1	13252-06J00	SHAFT ASSY-VALVE ROCKER		01	0810-			0									
	18 001	1	13222-43G00	BRACKET-ROCKER SHAFT		06	0810-			0									
	19 001	1	13223-43G01	BRACKET-ROCKER SHAFT		02	0810-			0									
	20 001	1	13256-43G01	SPRING-VALVE ROCKER		05	0810-			0									
	21 001	1	13256-43G02	SPRING-VALVE ROCKER		01	0810-			0									
	22 001	1	13255-43G00	SPRING-ROCKER		01	0810-			0									
	23 001	1	13257-63G01	ARM-VALVE ROCKER		06	0810-			0									
	24 001	1	13258-63G01	ARM-VALVE ROCKER		06	0810-			0									
	25 001	1	13234-43G01	SCREW-ADJUST, VALVE ROCKER		12	0810-			0									
	26 001	1	12112-51N00	NUT-CONNECTING ROD		12	0810-			0									
	27 001	1	13297-43G00	WASHER		12	0810-			0									
	28 001	1	13238-43G00	ROD-PUSH		12	0810-			0									
	29 001	1	13231-54T02	LIFTER-VALVE		12	0810-			0									

SEC. 135 FRONT COVER & FITTING

[200810-]



P0TD4A310135_A

SEC. 135 FRONT COVER & FITTING

APPLIED MODEL																														
1	0	0	0	0	0	0	0	0	0	1	1	1	1	1	1	1	1	1	2	2	2	2	2	2	2	2	2	3		
0	1	2	3	4	5	6	7	8	9	0	1	2	3	4	5	6	7	8	9	0	1	2	3	4	5	6	7	8	9	0
1	0	0	1																											
2	0	0	1																											
3	0	0	1																											
4	0	0	1																											
5	0	0	1																											
6	0	0	1																											
7	0	0	1																											
8	0	0	1																											
9	0	0	1																											
10	0	0	1																											
11	0	0	1																											

S	KEY NO.	LEV	PART NO.	PART NAME	SPECIFICATION	QTY	APPLIED DATE	ICAF	FORMER PART NO.
	1	001	13034-06J02	HOUSING-TIMING CHAIN		01	0810-		
	2	001	13510-43G01	SEAL-OIL		01	0810-		
	3	001	KP710-00150	GASKET-FR COVER		AR	0810-		
	4	001	14465-43G20	SEAL-RUBBER		01	0810-		
	5	001	14465-43G21	SEAL-RUBBER		01	0810-		
	6	001	16132-43G00	NUT		01	0810-		
	7	001	13031-43G02	PLATE-ENGINE		01	0810-		
	8	001	13037-06J01	GASKET-COVER		01	0810-		
	9	001	13560-54T00	COVER-FLANGE		01	0810-		
	10	001	13040-09W0A	COVER-ADAPTER		01	0810-		
	11	001	13039-34N00	DOWEL-IDLER SPROCKET		01	0810-		

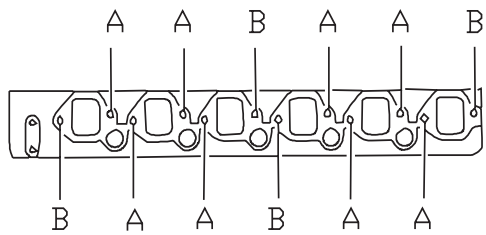
SEC. 140 MANIFOLD

[200810-]

VIEW "A" INTAKE

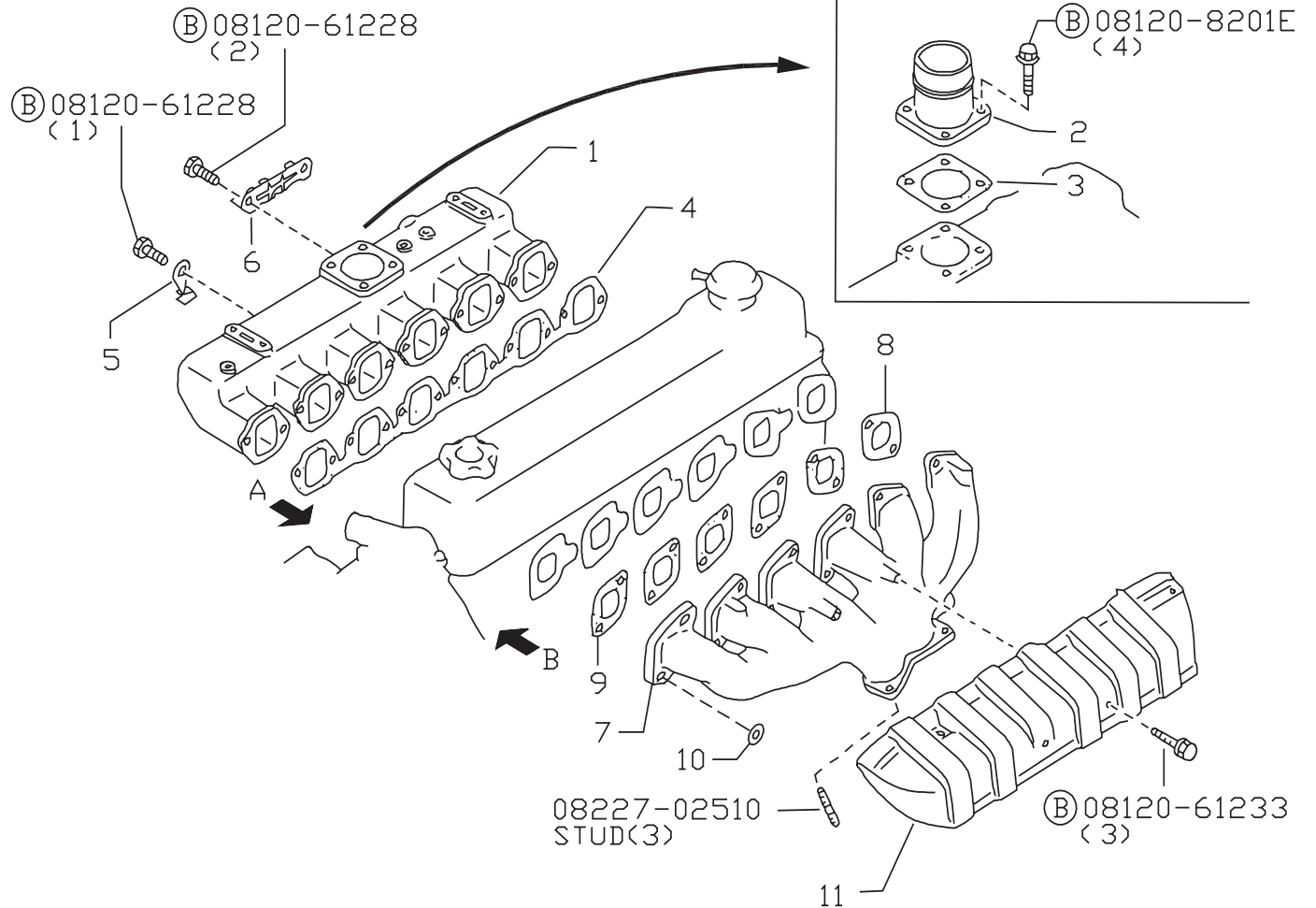
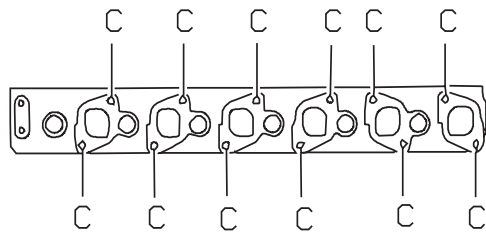
A.... (B) 08120-8251E
(8)

B.... (N) 08911-1081G
(4)



VIEW "B" EXHAUST

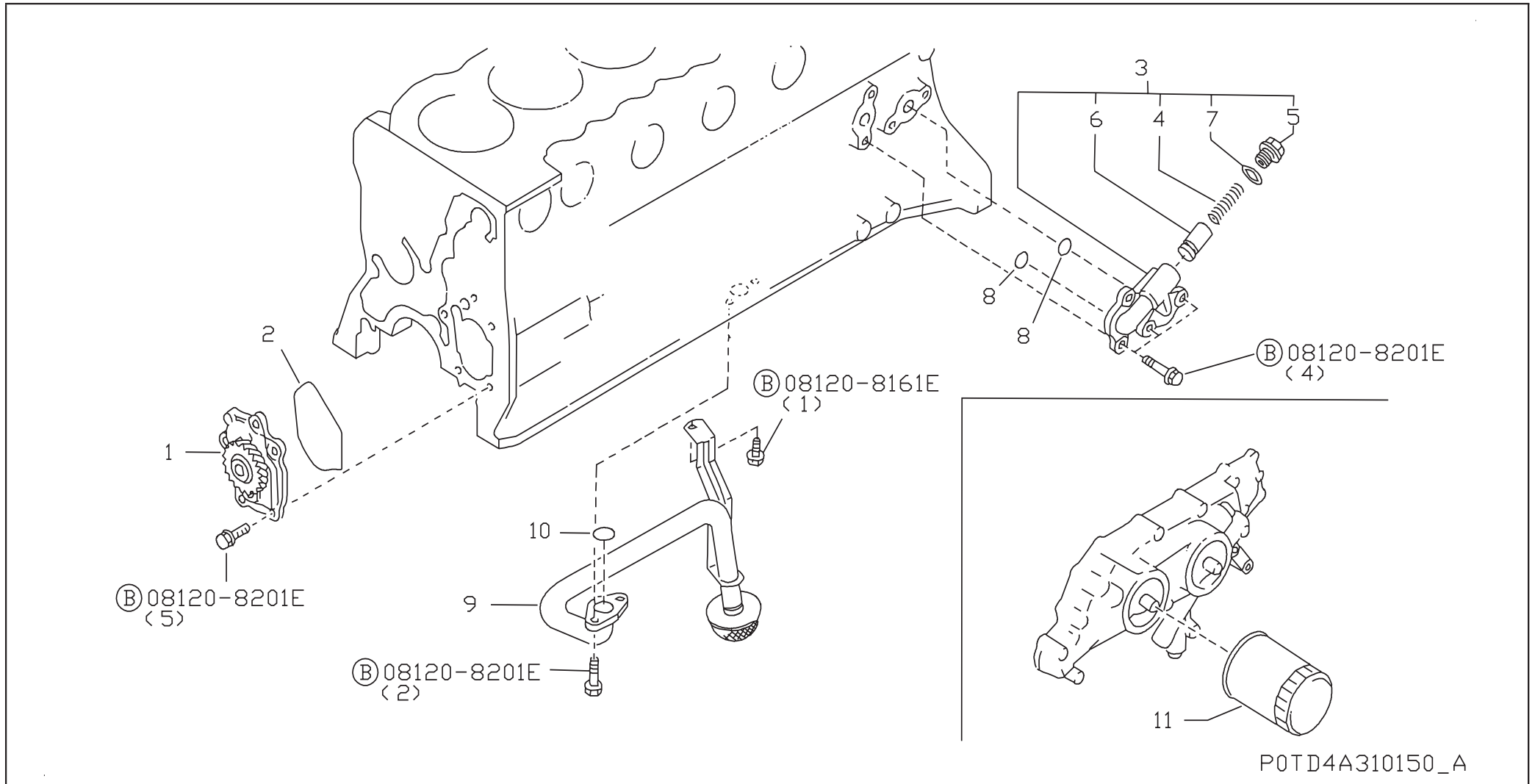
C.... (N) 08911-6401A , KEY 9
(12)



P0TD4A310140_A

SEC. 150 LUBRICATING SYSTEM

[200810-]



GROUP INDEX

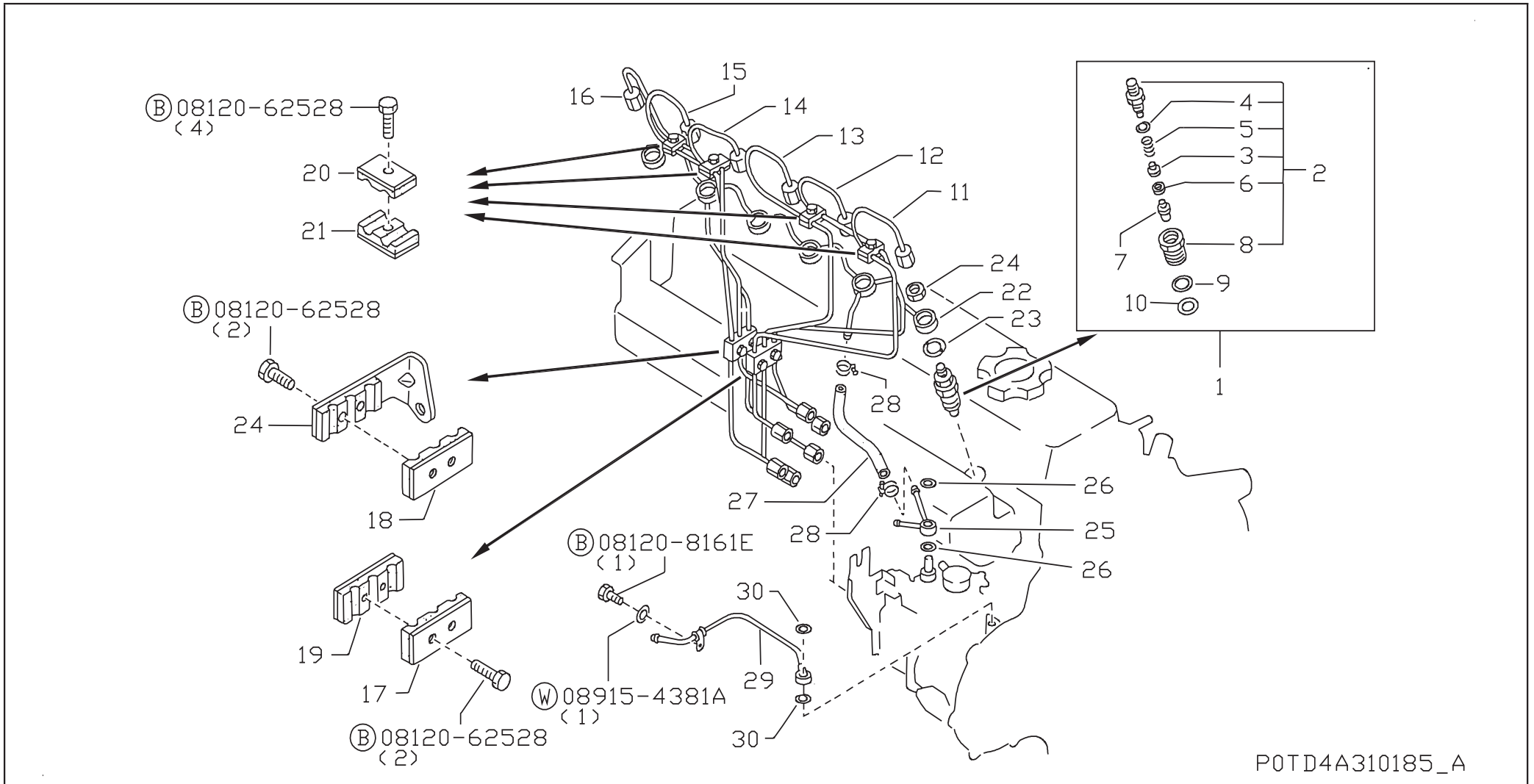
FUEL, ENGINE & MOTOR CONTROL

SEC. NO.	SECTION NAME	PAGE NO.
185	FUEL SUPPLY SYSTEM	28
186	FUEL INJECTION PUMP	30

B

SEC. 185 FUEL SUPPLY SYSTEM

[200810-]



P0TD4A310185_A

SEC. 185 FUEL SUPPLY SYSTEM

APPLIED MODEL																																						
S	KEY NO.	LEV	PART NO.	PART NAME	SPECIFICATION	QTY	APPLIED DATE	ICANF	FORMER PART NO.	0	0	0	0	0	0	0	0	1	1	1	1	1	1	1	1	2	2	2	2	2	2	2	2	3				
										1	2	3	4	5	6	7	8	9	0	1	2	3	4	5	6	7	8	9	0	1	2	3	4	5	6	7	8	9
	1	001	1	16600-90102	NOZZLE & HOLDER ASSY		06 0810-			○																												
	2	001	2	16610-43G01	HOLDER ASSY		06 0810-			○																												
	3	001	3	16612-43G00	PIN		06 0810-			○																												
	4	001	3	16613-43G00	WASHER	T=0.1	AR 0810-			○																												
		002	3	-43G01		T=0.2	AR 0810-			○																												
		003	3	-43G02		T=0.3	AR 0810-			○																												
		004	3	-43G03		T=0.4	AR 0810-			○																												
		005	3	-43G04		T=0.5	AR 0810-			○																												
		006	3	-43G05		T=0.52	AR 0810-			○																												
		007	3	-43G06		T=0.54	AR 0810-			○																												
	5	001	3	16615-43G00	SPRING		06 0810-			○																												
	6	001	3	16616-43G00	PIECE-DISTANCE		06 0810-			○																												
	7	001	2	16620-90009	NOZZLE ASSY		06 0810-			○																												
	8	001	3	16629-43G01	NUT		06 0810-			○																												
	9	001	2	16625-43G00	WASHER-NPZZLE		06 0810-			○																												
	10	001	2	16626-43G00	GASKET		06 0810-			○																												
	11	001	1	16680-06J02	TUBE ASSY-INJECTION,N01		01 0810-			○																												
	12	001	1	16681-06J02	TUBE ASSY-INJECTION,N02		01 0810-			○																												
	13	001	1	16682-06J02	TUBE ASSY-INJECTION,N03		01 0810-			○																												
	14	001	1	16683-06J02	TUBE ASSY-INJECTION,N04		01 0810-			○																												
	15	001	1	16684-06J02	TUBE ASSY-INJECTION,N05		01 0810-			○																												
	16	001	1	16685-06J02	TUBE ASSY-INJECTION,N06		01 0810-			○																												
	17	001	1	16696-06JOA	SUPPORT-INJECTION TUBE		01 0810-			○																												
	18	001	1	16696-06JOB	SUPPORT-INJECTION TUBE		01 0810-			○																												
	19	001	1	16697-06JOA	SUPPORT-INJECTION TUBE		02 0810-			○																												
	20	001	1	16698-43GOB	STAY-TUBE		04 0810-			○																												
	21	001	1	16699-43GOA	STAY-TUBE		04 0810-			○																												
	22	001	1	16670-06JOA	TUBE-SPILL		01 0810-			○																												
	23	001	1	16627-43G00	GASKET		06 0810-			○																												
	24	001	1	16666-43GOA	NUT		06 0810-			○																												
	25	001	1	16678-06JOA	TUBE-FUEL		01 0810-			○																												
	26	001	1	16794-10G00	GASKET		02 0810-			○																												
	27	001	1	16446-0Y760	HOSE-FUEL		01 0810-			○																												
	28	001	1	01558-00401	CLAMP		02 0810-			○																												
	29	001	1	17520-51H00	TUBE ASSY-FUEL		01 0810-			○																												
	30	001	1	16794-10G00	GASKET		02 0810-			○																												

SEC. 186 FUEL INJECTION PUMP

APPLIED MODEL																										
1																										
0																										
1																										
0																										
0																										
4																										
K																										
1																										
0																										
0																										
B																										

S	KEY NO.	LEV	PART NO.	PART NAME	SPECIFICATION	QTY	APPLIED DATE	ICANF	FORMER PART NO.	0	1	2	3	4	5	6	7	8	9	0	1	2	3	4	5	6	7	8	9	0	
	1	001	1	16735-06J00	GEAR-DRIVE,INJECTION PUMP		01 0810-			○																					
	2	001	1	16700-51H13	PUMP ASSY-INJECTION		01 0810-			○																					
	3	001	2	16720-43G00	HOUSING-INJECTION PUMP		01 0810-			○																					
	4	001	2	16648-F8000	TAPPET		01 0810-			○																					
	5	001	2	16640-R8100	PUMP ASSY-FEED		01 0810-			○																					
	6	001	2	16854-V0700	COVER		01 0810-			○																					
	7	001	2	16855-V0700	SCREW		02 0810-			○																					
	8	001	2	16730-16A00	SHAFT-DRIVE		01 0810-			○																					
	9	001	2	16731-V0700	KEY-WOODRUFF		01 0810-			○																					
	10	001	2	16733-V0701	DAMPER-RUBBER		02 0810-			○																					
	11	001	2	16734-V0700	GEAR-INJECTION		01 0810-			○																					
	12	001	2	16735-V0700	WASHER		01 0810-			○																					
	13	001	2	16740-V0700	ROLLER ASSY		01 0810-			○																					
	14	001	2	16822-V0700	PIN		01 0810-			○																					
	15	001	2	16823-V0700	PIN		01 0810-			○																					
	16	001	2	16824-V0700	CLIP		01 0810-			○																					
	17	001	2	16751-V0700	DISK		01 0810-			○																					
	18	001	2	16750-06J00	CAM-DISC		01 0810-			○																					
	19	001	2	16826-V0700	SEAL-O RING		02 0810-			○																					
	20	001	2	16645-51H00	PISTON		01 0810-			○																					
	21	001	2	16821-V0700	SLIDER		01 0810-			○																					
	22	001	2	14371-R8100	BOLT-EYE		01 0810-			○																					
	23	001	2	16825-51H00	SPRING-TIMER		AR 0810-			○																					
	24	001	2	16880-V0700	SHIM	T=0.6	AR 0810-			○																					
		002	2	-V0701		T=0.7	AR 0810-			○																					
		003	2	-V0702		T=0.9	AR 0810-			○																					
		004	2	-V0703		T=1.0	AR 0810-			○																					
		005	2	-V0704		T=1.2	AR 0810-			○																					
	25	006	2	16880-01T00	SHIM	T=2.4	AR 0810-			○																					
	26	001	2	16827-14G03	COVER		01 0810-			○																					
	27	001	2	16815-43G00	BOLT		04 0810-			○																					
	28	001	2	16829-V0700	COVER		01 0810-			○																					
	29	001	2	16764-V0700	SHIM		01 0810-			○																					
	30	001	2	16765-V0700	WASHER-PLUNGER		01 0810-			○																					
	31	001	2	16766-43G00	SEAT-SPRING,PLUNGER		01 0810-			○																					
	32	001	2	16767-V0700	SPRING-PLUNGER		01 0810-			○																					
	33	001	2	16768-V0700	SEAT-SPRING		02 0810-			○																					
	34	001	2	16882-V0700	SHIM	T=0.5	AR 0810-			○																					
		002	2	-V0701		T=0.8	AR 0810-			○																					
		003	2	-V0702		T=1.0	AR 0810-			○																					

SEC. 186 FUEL INJECTION PUMP

APPLIED MODEL																														
S	KEY NO.	LEV	PART NO.	PART NAME	SPECIFICATION	QTY	APPLIED DATE	ICAF	FORMER PART NO.	0	1	2	3	4	5	6	7	8	9	0	1	2	3	4	5	6	7	8	9	0
										1	2	3	4	5	6	7	8	9	0	1	2	3	4	5	6	7	8	9	0	1
	58	001	3	16701-23G00	SPRING-RETURN		01 0810-			0																				
	59	001	3	16707-51H00	ANGLE-GOVERNOR LEVER		01 0810-			0																				
	60	001	3	16702-43G01	SPRING-RETURN		01 0810-			0																				
	61	001	3	16706-V0700	SPRING-SEAT		01 0810-			0																				
	62	001	3	19264-35V00	SPRING		01 0810-			0																				
	63	001	3	19242-V0700	SEAL-RING		01 0810-			0																				
	64	001	3	19296-V0700	WASHER		01 0810-			0																				
	65	001	3	19290-06J00	SCREW-LOAD	L=53	AR 0810-			0																				
		002	3	-06J02		L=57	AR 0810-			0																				
	66	001	3	19297-V7213	NUT-ADJUST,LOAD SCREW		01 0810-			0																				
	67	001	3	19295-V0700	SEAL-O RING		01 0810-			0																				
	68	001	2	19251-51H00	LEVER-GOVERNOR		01 0810-			0																				
	69	001	2	19252-V0700	BOLT-PIVOT		02 0810-			0																				
	70	001	2	19253-V0700	GASKET		03 0810-			0																				
	71	001	2	19254-43G00	SPRING		02 0810-			0																				
	72	001	2	19212-35V00	NUT		01 0810-			0																				
	73	001	2	19210-16A00	SHAFT-GOVERNOR		01 0810-			0																				
	74	001	2	19211-V0700	SEAL-O RING		01 0810-			0																				
	75	001	2	19208-V0700	SHIM	T=1.05	AR 0810-			0																				
		002	2	-V0701		T=1.25	AR 0810-			0																				
		003	2	-V0702		T=1.45	AR 0810-			0																				
		004	2	-V0703		T=1.65	AR 0810-			0																				
		005	2	-V0704		T=1.85	AR 0810-			0																				
	76	001	2	19209-V0700	WASHER		01 0810-			0																				
	77	001	2	19200-V0700	HOLDER-FLY WEIGHT		01 0810-			0																				
	78	001	2	19203-V0700	FLYWEIGHT KIT		02 0810-			0																				
	79	001	2	19204-V0700	WASHER-FLY WEIGHT		01 0810-			0																				
	80	001	2	19205-1H902	SLEEVE-GOVERNOR		01 0810-			0																				
	81	001	2	19206-01T00	CAP-GOVERNOR		01 0810-			0																				
	82	001	2	19207-V0700	PLUG-CLOSING	L=7.8	AR 0810-			0																				
		002	2	-V0701		L=8.0	AR 0810-			0																				
		003	2	-V0702		L=8.2	AR 0810-			0																				
		004	2	-V0703		L=8.4	AR 0810-			0																				
		005	2	-V0704		L=8.6	AR 0810-			0																				
		006	2	-V0705		L=8.8	AR 0810-			0																				
		007	2	-V0706		L=9.0	AR 0810-			0																				
		008	2	-V0707		L=9.2	AR 0810-			0																				
	83	001	2	19264-51H00	SPRING		01 0810-			0																				
	84	001	2	19264-51H01	SPRING		01 0810-			0																				
	85	001	2	19247-V0700	SCREW		04 0810-			0																				

SEC. 186 FUEL INJECTION PUMP

APPLIED MODEL																			
1	0	1	0	0	0	0	0	0	0	1	1	1	1	1	1	1	1	2	2
4	K	1	0	B															
0	0	0	0	0	0	0	0	0	1	1	1	1	1	1	1	1	2	2	2
1	2	3	4	5	6	7	8	9	0	1	2	3	4	5	6	7	8	9	0

S	KEY NO.	LEV	PART NO.	PART NAME	SPECIFICATION	QTY	APPLIED DATE	ICAF	FORMER PART NO.
	86	001	2	16785-V0700	PLUG	01	0810-		
	87	001	3	19253-V0700	WASHER	03	0810-		
	88	001	3	16784-V0700	SEAL-O RING	T=2.04	01	0810-	
	89	001	3	16788-V0700	BOLT	01	0810-		
	90	001	2	16865-V0700	SEAL-O RING	01	0810-		
	91	001	2	16865-V0701	O-RING	01	0810-		
	92	001	2	16860-43G01	VALVE ASSY-REGULATING	01	0810-		
	93	001	3	16866-V0700	SPRING-RING	T=2.34	01	0810-	
	94	001	2	16756-R8100	VALVE-OVERFLOW	01	0810-		
	95	001	3	16757-R8100	BOLT	01	0810-		
	96	001	3	16758-R8100	PACKING	01	0810-		
	97	001	2	16752-V0700	SPRING	01	0810-		
	98	001	2	16711-06J01	BRACKET	01	0810-		
	99	001	2	19244-06J00	SCREW-ADJUST	01	0810-		
	100	001	2	19244-06J01	SCREW-ADJUST	01	0810-		
	101	001	2	19247-R8300	SCREW	01	0810-		
	102	001	2	16870-R8101	VALVE ASSY-MAGNET, FUEL CUT	01	0810-		
	103	001	3	16872-V0701	SEAL-O RING	01	0810-		
	104	001	2	16876-06J00	WIRE-CONNECT, FUEL CUT	01	0810-		
	105	001	2	19243-43G00	NUT-ADJUST	01	0810-		
	106	001	2	19270-V7217	LEVER-STOP	L=36.5	01	0810-	
	107	001	2	19270-V7213	LEVER-STOP	L=18	AR	0810-	
		002	2	-V7214		L=21	AR	0810-	
		003	2	-V7215		L=24	AR	0810-	
		004	2	-V7216		L=27	AR	0810-	
	108	001	2	16799-V0700	GASKET KIT	01	0810-		
	109	001	2	16742-37501	KEY-WOODRUFF	02	0810-		
	110	001	1	16701-WK000	GASKET-INJECTION PUMP	01	0810-		
	111	001	1	01211-01054	NUT	01	0810-		
	112	001	1	16811-06J00	BRACKET-INJECTION PUMP	01	0810-		
	113	001	1	16814-06J00	SUPPORT-INJECTION PUMP	01	0810-		
	114	001	1	19270-35V10	LEVER-STOP	01	0810-		

GROUP INDEX

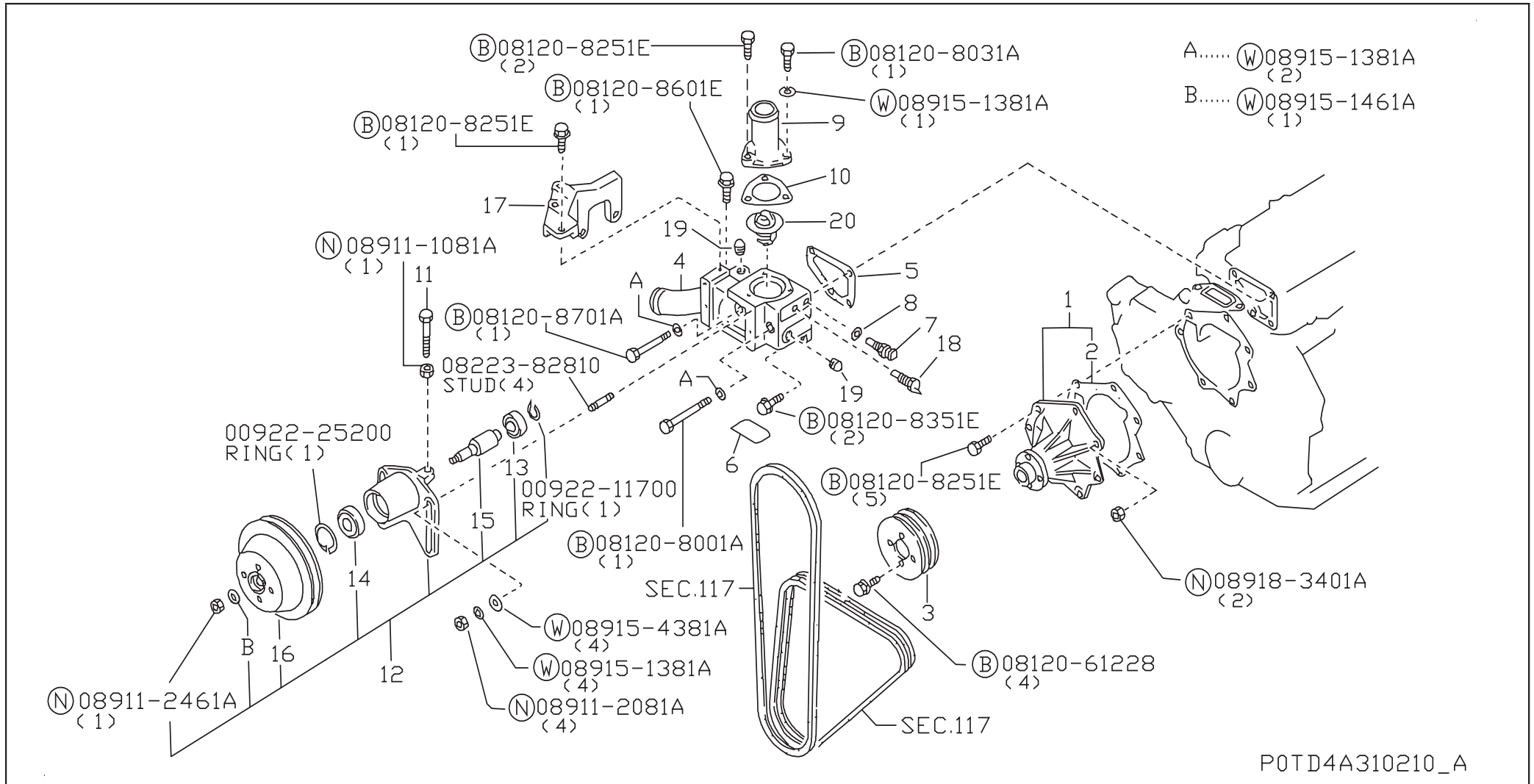
EXHAUST & COOLING

SEC. NO.	SECTION NAME	PAGE NO.
210	WATER PUMP, COOLING FAN & THERMOSTAT	36
213	OIL COOLER	38

C

SEC. 210 WATER PUMP, COOLING FAN & THERMOSTAT

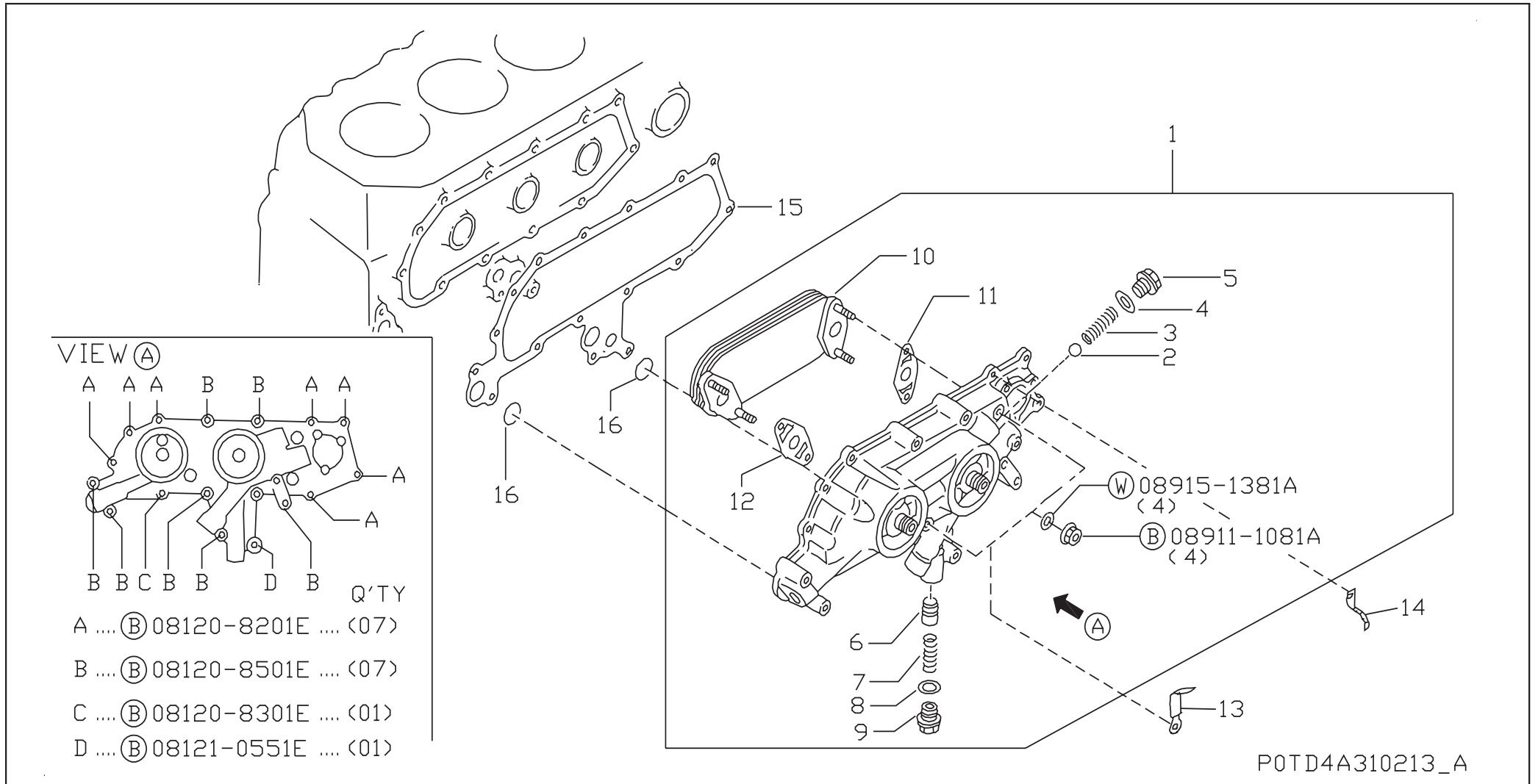
[200810-]



P0TD4A310210_A

SEC. 213 OIL COOLER

[200810-]



P0TD4A310213_A

SEC. 213 OIL COOLER

APPLIED MODEL																																		
1	0	1	0	0																														
4	K	1	0	B																														
S	KEY NO.	LEV	PART NO.	PART NAME	SPECIFICATION	QTY	APPLIED DATE	ICANF	FORMER PART NO.	0	0	0	0	0	0	0	0	1	1	1	1	1	1	1	1	1	2	2	2	2	2	2	2	3
	1 001 1		21305-30J0A	OIL COOLER ASSY		01	0810-			0																								
	2 001 2		15300-76200	VALVE-SHORT		01	0810-			0																								
	3 001 2		15301-06J00	SPRING-VALVE		01	0810-			0																								
	4 001 2		15304-61501	GASKET		01	0810-			0																								
	5 001 2		15134-6150A	CAP-VALVE		01	0810-			0																								
	6 001 2		15132-06J00	VALVE ASSY-OIL REGULATOR		01	0810-			0																								
	7 001 2		15133-06J02	SPRING-VALVE		01	0810-			0																								
	8 001 2		05412-1800P	WASHER-LOCK		01	0810-			0																								
	9 001 2		15134-43G0A	CAP-VALVE		01	0810-			0																								
	10 001 2		21355-30J00	ELEMENT OIL		01	0810-			0																								
	11 001 2		21334-05D04	SEAL-O RING		01	0810-			0																								
	12 001 2		21334-30J01	SEAL-O RING		01	0810-			0																								
	13 001 1		24211-89944	CLIP		02	0810-			0																								
	14 001 1		24210-89991	CLIP		01	0810-			0																								
	15 001 1		21304-06J02	GASKET-OIL COOLER		01	0810-			0																								
	16 001 1		21334-02N00	SEAL-O RING		02	0810-			0																								

GROUP INDEX

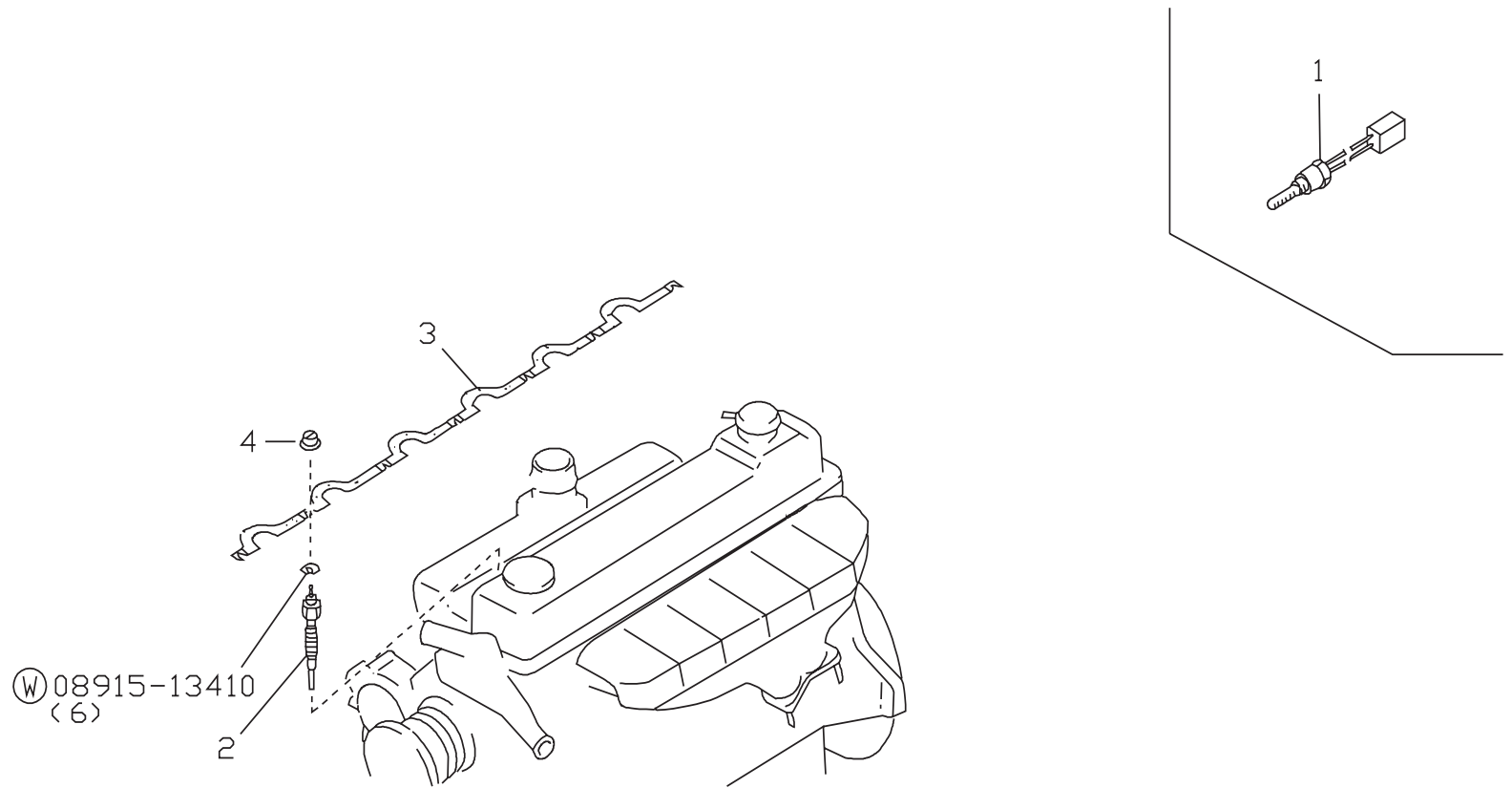
ENGINE ELECTRICAL

SEC. NO.	SECTION NAME	PAGE NO.
220	IGNITION SYSTEM	42
230	ALTERNATOR FITTING	44
231	ALTERNATOR	46
233	STARTER MOTOR	48

D

SEC. 220 IGNITION SYSTEM

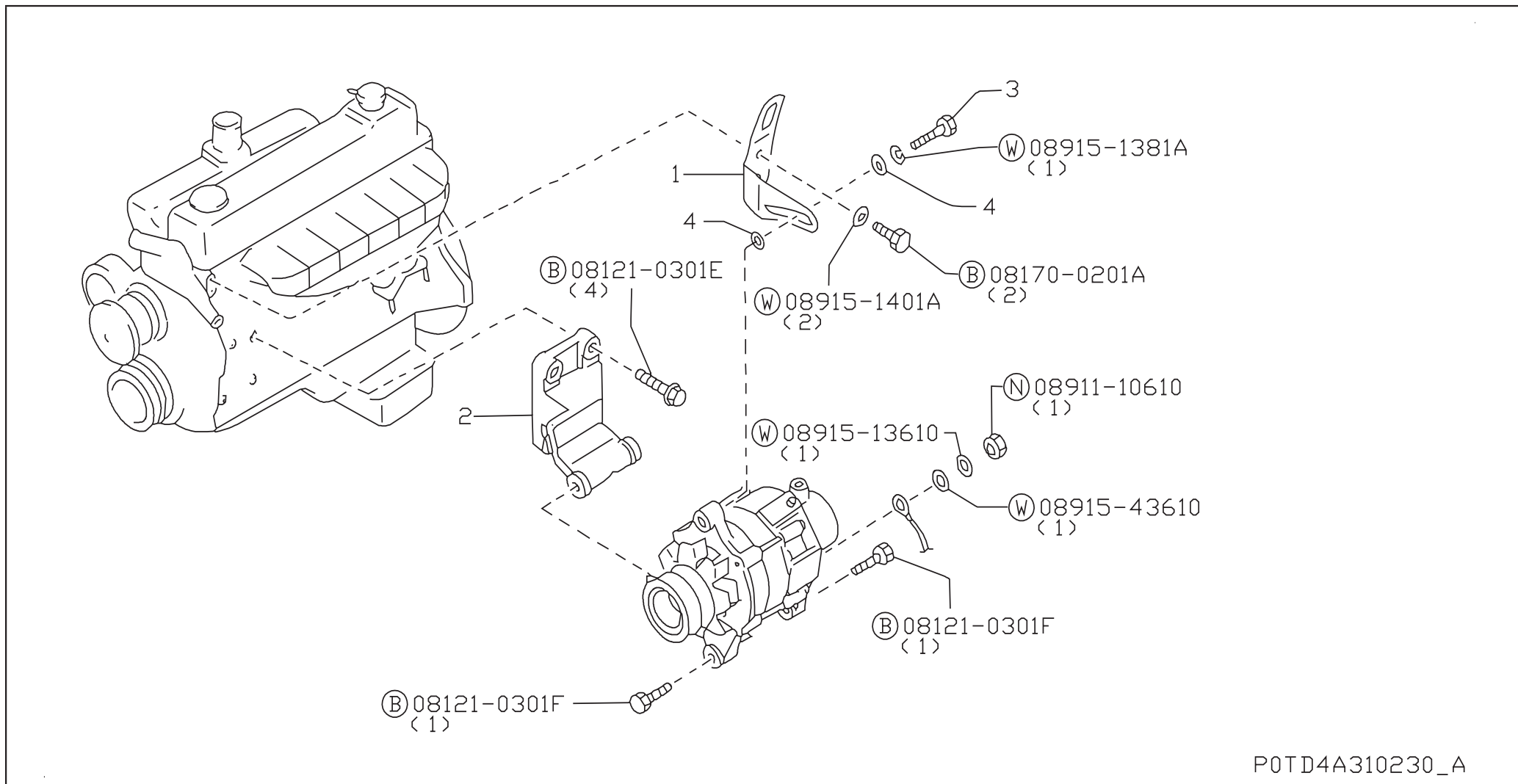
[200810-]



P0TD4A310220_A

SEC. 230 ALTERNATOR FITTING

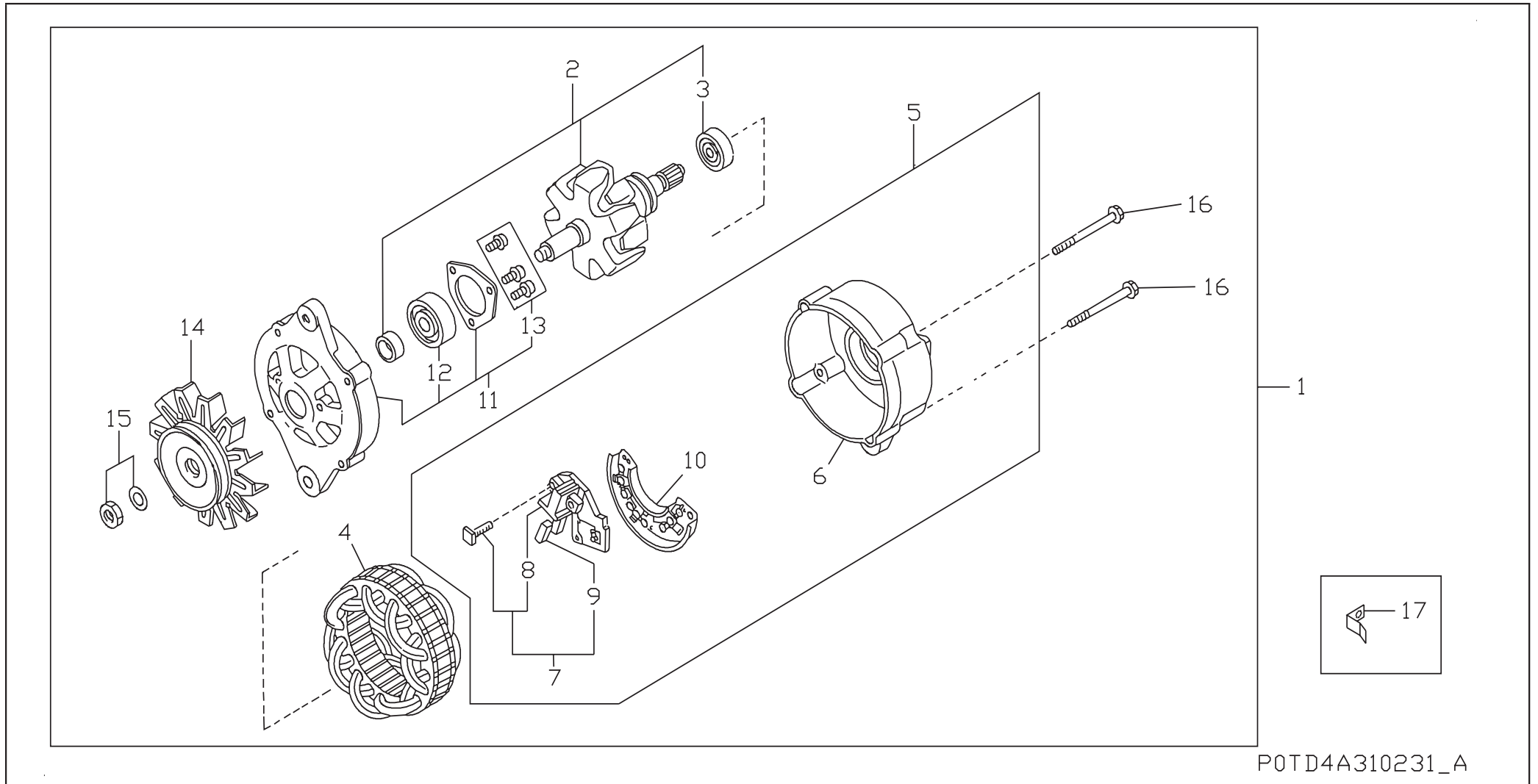
[200810-]



P0TD4A310230_A

SEC. 231 ALTERNATOR

[200810-]



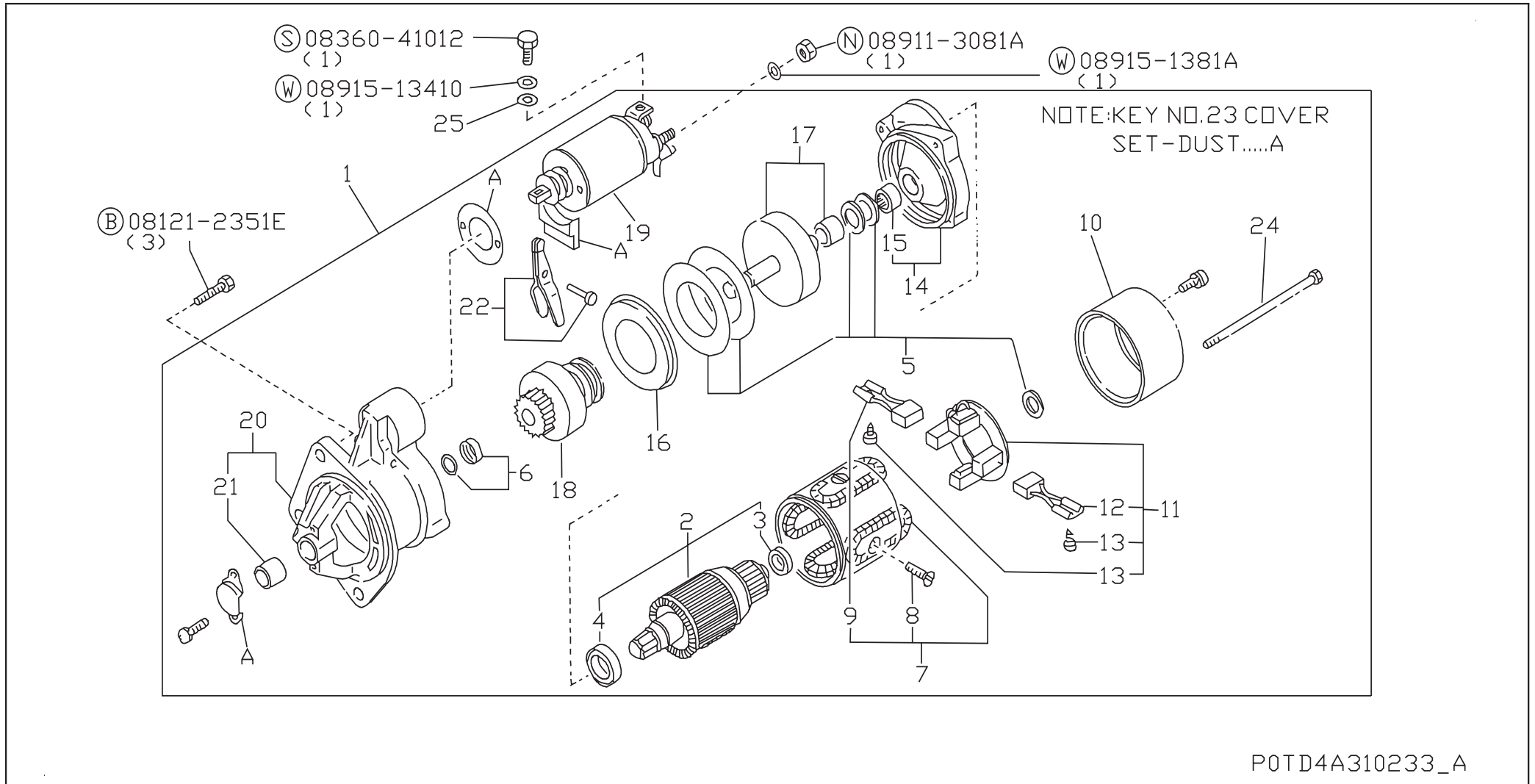
P0TD4A310231_A

SEC. 231 ALTERNATOR

APPLIED MODEL																																					
S	KEY NO.	LEV	PART NO.	PART NAME	SPECIFICATION	QTY	APPLIED DATE	ICAF	FORMER PART NO.	0	0	0	0	0	0	0	0	0	1	1	1	1	1	1	1	1	1	2	2	2	2	2	2	2	3		
										1	2	3	4	5	6	7	8	9	0	1	2	3	4	5	6	7	8	9	0	1	2	3	4	5	6	7	8
	1	001	1	23100-51HOA	ALTERNATOR ASSY	24V-25A	01	0810-		○																											
	2	001	2	23108-51HOA	ROTOR ASSY		01	0810-		○																											
	3	001	3	23120-79800	BEARING-BALL		01	0810-		○																											
	4	001	2	23102-51H00	STATOR ASSY		01	0810-		○																											
	5	001	2	23127-51HOA	BRACKET ASSY-REAR		01	0810-		○																											
	6	001	3	23183-51HOA	COVER-REAR		01	0810-		○																											
	7	001	3	23133-51HOA	HOLDER ASSY-BRUSH		01	0810-		○																											
	8	001	4	23135-10W00	BRUSH ASSY		01	0810-		○																											
	9	001	4	23142-Q4601	BRUSH SET		02	0810-		○																											
	10	001	3	23230-51HOA	DIODE ASSY		01	0810-		○																											
	11	001	2	23118-51HOA	BRACKET ASSY-FRONT		01	0810-		○																											
	12	001	3	23120-58S00	BEARING-BALL		01	0810-		○																											
	13	001	3	23200-Q460A	SCREW-SET		01	0810-		○																											
	14	001	2	23150-51HOA	PULLEY ASSY		01	0810-		○																											
	15	001	2	23153-51HOA	NUT-PULLEY		01	0810-		○																											
	16	001	2	23131-W170A	BOLT-THROUGH		04	0810-		○																											
	17	001	1	24210-S090A	CLIP		01	0810-		○																											

SEC. 233 STARTER MOTOR

[200810-]



P0TD4A310233_A

SEC. 233 STARTER MOTOR

APPLIED MODEL																											
1	0	1	0	0	0	0	0	0	0	0	0	1	1	1	1	1	1	1	1	2	2	2	2	2	2	2	3
1	0	1	0	0	0	0	0	0	0	0	0	1	1	1	1	1	1	1	2	2	2	2	2	2	2	3	
0	0	0	0	0	0	0	0	0	0	0	0	0	0	0	0	0	0	0	0	0	0	0	0	0	0	0	
4	0	0	0	0	0	0	0	0	0	0	0	0	0	0	0	0	0	0	0	0	0	0	0	0	0	0	
K	0	0	0	0	0	0	0	0	0	0	0	0	0	0	0	0	0	0	0	0	0	0	0	0	0	0	
1	0	0	0	0	0	0	0	0	0	0	0	0	0	0	0	0	0	0	0	0	0	0	0	0	0	0	
0	0	0	0	0	0	0	0	0	0	0	0	0	0	0	0	0	0	0	0	0	0	0	0	0	0	0	
0	0	0	0	0	0	0	0	0	0	0	0	0	0	0	0	0	0	0	0	0	0	0	0	0	0	0	
B	0	0	0	0	0	0	0	0	0	0	0	0	0	0	0	0	0	0	0	0	0	0	0	0	0	0	

S	KEY NO.	LEV	PART NO.	PART NAME	SPECIFICATION	QTY	APPLIED DATE	ICAF	FORMER PART NO.
	1 001	1	23300-06J02	MOTOR ASSY-STARTER	24V-3.5KW	01	0810-		
	2 001	2	23310-99205	ARMATURE ASSY-STARTER		01	0810-		
	3 001	3	23383-Z9002	BEARING-BALL		01	0810-		
	4 001	3	23383-Z9003	BEARING-BALL		01	0810-		
	5 001	2	23372-V0600	WASHER SET		01	0810-		
	6 001	2	23369-Z9001	STOPPER SET-PINION		01	0810-		
	7 001	2	23306-Z9002	COIL ASSY-FIELD		01	0810-		
	8 001	3	23305-09500	SCREW-POLECORE SET		04	0810-		
	9 001	3	23331-Z9002	BRUSH-PLUS		02	0810-		
	10 001	2	23337-06J01	COVER ASSY-REAR		01	0810-		
	11 001	2	23330-C8600	HOLDER ASSY-BRUSH		01	0810-		
	12 001	3	23331-Z9002	BRUSH-MINUS		02	0810-		
	13 001	3	23333-Z9001	SPRING-BRUSH		04	0810-		
	14 001	2	23383-Z9007	BEARING-BALL		01	0810-		
	15 001	3	23341-V0600	BEARING SET		01	0810-		
	16 001	2	23358-V0600	PLATE-CENTER		01	0810-		
	17 001	2	23312-Z9000	SHAFT ASSY-CLUTCH GEAR		01	0810-		
	18 001	2	23314-Z9002	SHAFT ASSY-CLUTCH GEAR		01	0810-		
	19 001	2	23343-06J01	SWITCH ASSY-MAGNETIC		01	0810-		
	20 001	2	23318-06J02	CASE ASSY-GEAR		01	0810-		
	21 001	3	23319-Z9000	METAL-GEAR CASE		01	0810-		
	22 001	2	23322-06J01	LEVER SET-SHIFT		01	0810-		
	23 001	2	23470-06J01	COVER SET-DUST		01	0810-		
	24 001	2	23340-Z9003	BOLT-THROUGH		02	0810-		
	25 001	1	01311-00244	WASHER		01	0810-		

ALPHABETICAL PART NAME INDEX

ALPHABETICAL PART NAME INDEX

PART NAME	SEC.NO.	PAGE	PART NAME	SEC.NO.	PAGE	PART NAME	SEC.NO.	PAGE
<u>A</u>			<u>C</u>			<u>G</u>		
ANGLE-GOVERNOR LEVER	186	33	COVER ASSY-VALVE ROCKER	111	11	GASKET	110	9
ARMATURE ASSY-STARTER	233	49	CAM-DISC	186	31		140	23
			CAMSHAFT ASSY	130	19		185	29
<u>B</u>			CAP ASSY-OIL FILLER	111	11		186	33
BAR-ADJUSTING,ALTERNATOR	230	45	CAP-GOVERNOR	186	33		213	39
BEARING SET	233	49	CAP-VALVE	150	25	GASKET KIT	220	43
BEARING SET-CRANKSHAFT	120	17		213	39	GASKET KIT-ENGINE REPAIR	186	34
BEARING-BALL	210	37	CASE ASSY-GEAR	233	49	GASKET KIT-VALVE REGRIND	102	7
	231	47	CHAMBER ASSY-COMBUSTION	111	11	GASKET-CONNECTOR	210	37
	233	49	CLAMP	185	29	GASKET-COVER	135	21
BEARING-CONNECTING ROD	120	17	CLIP	111	11	GASKET-CYLINDER HEAD	111	11
BELT-FAN	117	13		140	23	GASKET-CYLINDER SIDE COVER	118	15
BLOCK ASSY-CYLINDER	110	9		186	31	GASKET-DELIVERY VALVE	186	32
BOLT	111	11	COIL ASSY-FIELD	233	49	GASKET-EXH MANF	140	23
	130	19	COVER	186	31	GASKET-FR COVER	135	21
	186	31	COVER ASSY-GOVERNOR	186	32	GASKET-INJECTION PUMP	186	34
	186	32	COVER ASSY-REAR	233	49	GASKET-MANIFOLD	140	23
	186	34	COVER SET-DUST	233	49	GASKET-OIL COOLER	213	39
	210	37	COVER-ADAPTER	135	21	GASKET-OIL PAN	110	9
	230	45	COVER-FLANGE	135	21	GASKET-OIL PUMP	150	25
BOLT-CONNECTING ROD	120	17	COVER-REAR	231	47	GASKET-OIL STRAINER	150	25
BOLT-CYLINDER HEAD	111	11	CRANKSHAFT ASSY	120	17	GASKET-ROCKER COVER	111	11
BOLT-EYE	186	31				GASKET-THERMOSTAT HOUSING	210	37
BOLT-FLYWHEEL	120	17	<u>D</u>			GASKET-WATER OUTLET	210	37
BOLT-MAIN BEARING CAP	110	9	DAMPER-RUBBER	186	31	GASKET-WATER PUMP	210	37
BOLT-OIL JET	110	9	DIODE ASSY	231	47	GAUGE ASSY-OIL LEVEL	110	9
BOLT-THROUGH	231	47	DOWEL	110	9	GAUGE-TEMPERATURE	210	37
	233	49	DOWEL-PIN	110	9	GEAR-CAMSHAFT	130	19
BRACKET	186	34	DUCT-AIR INTAKE	140	23	GEAR-CRANKSHAFT	120	17
BRACKET ASSY-FAN PULLEY	210	37	DUMPER-CRANK	120	17	GEAR-DRIVE,INJECTION PUMP	186	31
BRACKET ASSY-FRONT	231	47				GEAR-IDLER	130	19
BRACKET ASSY-REAR	231	47	<u>E</u>			GEAR-INJECTION	186	31
BRACKET-ALTERNATOR	230	45	ENGINE ASSY-BARE	101	5	GEAR-RING	120	17
BRACKET-INJECTION PUMP	186	34	ENGINE ASSY-SHORT	101	5	GUIDE-INLET VALVE	111	11
BRACKET-ROCKER SHAFT	130	19				GUIDE-OIL LEVEL GAUGE	110	9
BRUSH ASSY	231	47	<u>F</u>			<u>H</u>		
BRUSH SET	231	47	FILTER ASSY-OIL	150	25	HEAD-DISTRIBUTOR	186	32
BRUSH-MINUS	233	49	FLYWHEEL KIT	186	33	HOLDER ASSY	185	29
BRUSH-PLUS	233	49	FLYWHEEL ASSY	120	17	HOLDER ASSY-BRUSH	231	47
BUSH SET	110	9					233	49
BUSH-CRANK PULLEY	120	17				HOLDER-DELIERY VALVE	186	32
BUSHING	120	17				HOLDER-FLY WEIGHT	186	33
BUSH-OIL PUMP DRIVE SPINDLE	110	9				HOSE-FUEL	185	29
						HOUSING-FLYWHEEL	110	9

ALPHABETICAL PART NAME INDEX

PART NAME	SEC.NO.	PAGE	PART NAME	SEC.NO.	PAGE	PART NAME	SEC.NO.	PAGE
STAY-TUBE	185	29	WASHER-LOCK	213	39			
STOPPER SET-PINION	233	49	WASHER-SEAL	150	25			
STRAINER-OIL	150	25	WASHER-SPRING	186	32			
STUD-OIL FILTER	110	9		230	45			
SUPPORTER-WATER PUMP	210	37	WIRE-CONNECT,FUEL CUT	186	34			
SUPPORT-INJECTION TUBE	185	29						
SWITCH ASSY-MAGNETIC	233	49						
SWITCH ASSY-TRACTION MOTOR CUT	110	9						
<u>T</u>								
TAPPET	186	31						
THERMOSTAT ASSY	210	37						
TRAY-ROCKER COVER WASHER	111	11						
TUBE ASSY-FUEL	185	29						
TUBE ASSY-INJECTION,N01	185	29						
TUBE ASSY-INJECTION,N02	185	29						
TUBE ASSY-INJECTION,N03	185	29						
TUBE ASSY-INJECTION,N04	185	29						
TUBE ASSY-INJECTION,N06	185	29						
TUBE ASSY-INJECTION,N05	185	29						
TUBE-FUEL	185	29						
TUBE-SPILL	185	29						
<u>V</u>								
VALVE ASSY-CONTROL BLOWBY	118	15						
VALVE ASSY-OIL REGULATOR	150	25						
	213	39						
VALVE ASSY-REGULATING	186	34						
VALVE ASSY-RELIEF	150	25						
VALVE-DELIVERY	186	32						
VALVE-EXHAUST	130	19						
VALVE-INTAKE	130	19						
VALVE-OVERFLOW	186	34						
<u>W</u>								
WASHER	111	11						
	130	19						
	140	23						
	185	29						
	186	31						
	186	32						
	186	33						
	233	49						
WASHER SET	233	49						
WASHER SET-THRUST	120	17						
WASHER-CAM SPROCKET	130	19						
WASHER-DRAIN PLUG	110	9						

PART NO. INDEX

PART NUMBER INDEX

PART NO.	SEC.NO.	PAGE NO.	PART NO.	SEC.NO.	PAGE NO.	PART NO.	SEC.NO.	PAGE NO.	PART NO.	SEC.NO.	PAGE NO.	PART NO.	SEC.NO.	PAGE NO.	PART NO.	SEC.NO.	PAGE NO.
<u>00000</u>			11072-34N02 .. 210	37	12309-51H00 .. 120	17	13560-54T00 .. 135	21	16625-43G00 .. 185	29	16742-R8111 .. 186	32					
			11076-45N02 .. 111	11	12310-GL00A .. 120	17	14003-VB210 .. 140	23	16625-43G02 .. 111	11	16750-06J00 .. 186	31					
			11086-06J00 .. 220	43	12312-0T00A .. 120	17	14004-03J00 .. 140	23	16626-43G00 .. 185	29	16751-V0700 .. 186	31					
01111-16134 .. 210	37	11098-45N00 .. 111	11	12313-10600 .. 110	9	14035-06J01 .. 140	23	16627-43G00 .. 185	29	16752-V0700 .. 186	34						
01121-00724 .. 130	19	11099-45N00 .. 111	11	12316-L2001 .. 120	17	14036-06J02 .. 140	23	16629-43G01 .. 185	29	16756-R8100 .. 186	34						
01211-01054 .. 186	34	11099-45N10 .. 111	11	13001-51N00 .. 130	19	14036-06J03 .. 140	23	16640-R8100 .. 186	31	16756-V0700 .. 186	32						
01311-00244 .. 233	49	11099-45N11 .. 111	11	13002-51N1A .. 110	9	14038-96000 .. 140	23	16645-51H00 .. 186	31	16757-R8100 .. 186	34						
01351-00104 .. 110	9	11110-34T02 .. 110	9	13003-51N1B .. 110	9	14327-J6500 .. 140	23	16648-F8000 .. 186	31	16758-R8100 .. 186	34						
01522-05104 .. 110	9	11121-06J04 .. 110	9	13003-51N1C .. 110	9	14371-R8100 .. 186	31	16650-43G01 .. 111	11	16760-06J00 .. 186	32						
01522-10224 .. 120	17	11128-01M00 .. 110	9	13003-51N1D .. 110	9	14465-43G02 .. 210	37	16666-43G0A .. 185	29	16764-V0700 .. 186	31						
01558-00401 .. 185	29	11140-4K10A .. 110	9	13010-06J00 .. 130	19	14465-43G20 .. 135	21	16670-06J0A .. 185	29	16765-V0700 .. 186	31						
01642-03004 .. 110	9	11150-62T00 .. 110	9	13011-43G00 .. 130	19	14465-43G21 .. 135	21	16678-06J0A .. 185	29	16766-43G00 .. 186	31						
01648-00024 .. 110	9	11710-06J00 .. 230	45	13012-43G01 .. 130	19	15010-VB601 .. 150	25	16680-06J02 .. 185	29	16767-V0700 .. 186	31						
.. 111	11	11715-06J01 .. 230	45	13016-43G0A .. 130	19	15025-43G01 .. 150	25	16681-06J02 .. 185	29	16768-V0700 .. 186	31						
01648-00044 .. 111	11	11716-6T00A .. 230	45	13021-43G01 .. 120	17	15050-34T00 .. 150	25	16682-06J02 .. 185	29	16770-V0700 .. 186	32						
01648-00084 .. 110	9	11810-06J00 .. 118	15	13024-51N00 .. 130	19	15053-06J01 .. 150	25	16683-06J02 .. 185	29	16775-V0700 .. 186	32						
01648-00154 .. 110	9	12010-6T005 .. 120	17	13030-51N00 .. 130	19	15056-02N00 .. 110	9	16684-06J02 .. 185	29	16776-R8100 .. 186	32						
01648-00224 .. 110	9	12010-6T015 .. 120	17	13031-43G02 .. 135	21	15075-43G00 .. 110	9	16685-06J02 .. 185	29	16777-V0701 .. 186	32						
02117-16523 .. 117	13	12030-31N00 .. 120	17	13034-06J02 .. 135	21	15132-06J00 .. 213	39	16696-06J0A .. 185	29	16781-V0700 .. 186	32						
02117-30523 .. 117	13	12032-54T00 .. 120	17	13037-06J01 .. 135	21	15132-43G01 .. 150	25	16696-06JOB .. 185	29	16782-V0700 .. 186	32						
05412-1800P .. 150	25	12033-06J16 .. 120	17	13039-34N00 .. 135	21	15133-06J02 .. 213	39	16697-06J0A .. 185	29	16784-V0700 .. 186	34						
.. 213	39	12100-0W802 .. 120	17	13040-09W0A .. 135	21	15134-43G0A .. 150	25	16698-43G0B .. 185	29	16785-V0700 .. 186	34						
<u>10000</u>			12109-43G00 .. 120	17	13081-76202 .. 130	19	.. 213	39	16699-43G0A .. 185	29	16788-V0700 .. 186	34					
			12111-2W20A .. 120	17	13201-43G01 .. 130	19	15134-6150A .. 213	39	16700-51H13 .. 186	31	16794-10G00 .. 185	29					
			12112-43G00 .. 120	17	13202-43G01 .. 130	19	15208-43G0A .. 150	25	16701-23G00 .. 186	33	.. 210	37					
10006-34T00 .. 111	11	12112-51N00 .. 130	19	13203-54T01 .. 130	19	15213-43G01 .. 110	9	16701-WK000 .. 186	34	16799-V0700 .. 186	34						
10101-GL00K .. 102	7	12117-2W20A .. 120	17	13206-31N00 .. 130	19	15241-05D0B .. 150	25	16702-43G01 .. 186	33	16811-06J00 .. 186	34						
10102-4K100 .. 101	5	12118-2W20A .. 120	17	13207-V170A .. 130	19	15243-05D00 .. 150	25	16706-V0700 .. 186	33	16814-06J00 .. 186	34						
10103-4K100 .. 101	5	12119-2W20A .. 120	17	13208-Z5500 .. 130	19	15255-D5502 .. 111	11	16707-51H00 .. 186	33	16815-43G00 .. 186	31						
11009-4K10A .. 110	9	12120-2W20A .. 120	17	13209-43G01 .. 130	19	15270-D0103 .. 111	11	16711-06J01 .. 186	34	16821-V0700 .. 186	31						
11012-06J00 .. 110	9	12124-43G02 .. 110	9	13212-54T01 .. 111	11	15300-76200 .. 213	39	16720-43G00 .. 186	31	16822-V0700 .. 186	31						
11013-T9000 .. 110	9	12125-VC700 .. 110	9	13222-43G00 .. 130	19	15301-06J00 .. 213	39	16730-16A00 .. 186	31	16823-V0700 .. 186	31						
11019-9000A .. 110	9	12201-06J01 .. 120	17	13223-43G01 .. 130	19	15304-61501 .. 213	39	16731-V0700 .. 186	31	16824-V0700 .. 186	31						
11021-51N00 .. 110	9	12205-76200 .. 120	17	13224-0W800 .. 111	11	16132-43G00 .. 135	21	16733-V0701 .. 186	31	16825-51H00 .. 186	31						
11021-J200A .. 110	9	12207-WJ10B .. 120	17	13231-54T02 .. 130	19	16446-0Y760 .. 185	29	16734-V0700 .. 186	31	16826-V0700 .. 186	31						
.. 210	37	12209-WJ10B .. 120	17	13234-43G01 .. 130	19	16575-06J01 .. 140	23	16735-06J00 .. 186	31	16827-14G03 .. 186	31						
11023-96000 .. 110	9	12210-WJ10B .. 120	17	13238-43G00 .. 130	19	16590-03J00 .. 140	23	16735-V0700 .. 186	31	16829-V0700 .. 186	31						
11026-01M02 .. 110	9	12211-WJ10B .. 120	17	13252-06J00 .. 130	19	16600-90102 .. 185	29	16740-V0700 .. 186	31	16854-V0700 .. 186	31						
11033-43G03 .. 118	15	12212-WJ10B .. 120	17	13255-43G00 .. 130	19	16610-43G01 .. 185	29	16742-37501 .. 186	34	16855-V0700 .. 186	31						
11039-63T02 .. 111	11	12279-06J01 .. 110	9	13256-43G01 .. 130	19	16612-43G00 .. 185	29	16742-R8100 .. 186	32	16860-43G01 .. 186	34						
11042-GL00J .. 102	7	12280-37525 .. 120	17	13256-43G02 .. 130	19	16613-43G00 .. 185	29	16742-R8101 .. 186	32	16865-V0700 .. 186	34						
11044-05D00 .. 111	11	12280-37526 .. 120	17	13257-63G01 .. 130	19	16613-43G01 .. 185	29	16742-R8102 .. 186	32	16865-V0701 .. 186	34						
11044-05D01 .. 111	11	12280-37527 .. 120	17	13258-63G01 .. 130	19	16613-43G02 .. 185	29	16742-R8103 .. 186	32	16866-V0700 .. 186	34						
11044-05D02 .. 111	11	12280-37528 .. 120	17	13264-05D05 .. 111	11	16613-43G03 .. 185	29	16742-R8104 .. 186	32	16870-R8101 .. 186	34						
11056-09D61 .. 111	11	12280-37529 .. 120	17	13268-29N0A .. 111	11	16613-43G04 .. 185	29	16742-R8105 .. 186	32	16872-V0701 .. 186	34						
11060-GL00A .. 210	37	12293-0W801 .. 110	9	13268-D010C .. 111	11	16613-43G05 .. 185	29	16742-R8106 .. 186	32	16876-06J00 .. 186	34						
11061-GL00A .. 210	37	12298-34N00 .. 110	9	13270-06J01 .. 111	11	16613-43G06 .. 185	29	16742-R8107 .. 186	32	16880-01T00 .. 186	31						
11062-34N01 .. 210	37	12305-L9062 .. 120	17	13292-06J00 .. 111	11	16615-43G00 .. 185	29	16742-R8108 .. 186	32	16880-V0700 .. 186	31						
11065-10T01 .. 220	43	12306-06J01 .. 120	17	13297-43G00 .. 130	19	16616-43G00 .. 185	29	16742-R8109 .. 186	32	16880-V0701 .. 186	31						
11066-0W80A .. 220	43	12307-06J00 .. 120	17	13510-43G01 .. 135	21	16620-90009 .. 185	29	16742-R8110 .. 186	32	16880-V0702 .. 186	31						

PART NUMBER INDEX

PART NO.	SEC.NO.	PAGE NO.	PART NO.	SEC.NO.	PAGE NO.	PART NO.	SEC.NO.	PAGE NO.	PART NO.	SEC.NO.	PAGE NO.	PART NO.	SEC.NO.	PAGE NO.	
16880-V0703 ..	186 31	19254-43G00 ..	186 33	23120-79800 ..	231 47	K0000 KP710-00150 .. 135 21						
16880-V0704 ..	186 31	19260-37502 ..	186 32	23127-51H0A ..	231 47							
16882-V0700 ..	186 31	19264-35V00 ..	186 33	23131-W170A ..	231 47							
16882-V0701 ..	186 31	19264-51H00 ..	186 33	23133-51H0A ..	231 47							
16882-V0702 ..	186 31	19264-51H01 ..	186 33	23135-10W00 ..	231 47							
16882-V0703 ..	186 32	19270-35V00 ..	186 32	23142-Q4601 ..	231 47							
16882-V0704 ..	186 32	19270-35V01 ..	186 32	23150-51H0A ..	231 47							
16882-V0705 ..	186 32	19270-35V10 ..	186 34	23153-51H0A ..	231 47							
16882-V0706 ..	186 32	19270-V7213 ..	186 34	23183-51H0A ..	231 47							
17520-51H00 ..	185 29	19270-V7214 ..	186 34	23200-Q460A ..	231 47							
19200-V0700 ..	186 33	19270-V7215 ..	186 34	23230-51H0A ..	231 47							
19203-V0700 ..	186 33	19270-V7216 ..	186 34	23300-06J02 ..	233 49							
19204-V0700 ..	186 33	19270-V7217 ..	186 34	23305-09500 ..	233 49							
19205-1H902 ..	186 33	19271-35V00 ..	186 32	23306-Z9002 ..	233 49							
19206-01T00 ..	186 33	19272-35V00 ..	186 32	23310-99205 ..	233 49							
19207-V0700 ..	186 33	19273-35V00 ..	186 32	23312-Z9000 ..	233 49							
19207-V0701 ..	186 33	19275-35V00 ..	186 32	23314-Z9002 ..	233 49							
19207-V0702 ..	186 33	19290-06J00 ..	186 33	23318-06J02 ..	233 49							
19207-V0703 ..	186 33	19290-06J02 ..	186 33	23319-Z9000 ..	233 49							
19207-V0704 ..	186 33	19295-V0700 ..	186 33	23322-06J01 ..	233 49							
19207-V0705 ..	186 33	19296-V0700 ..	186 33	23330-C8600 ..	233 49							
19207-V0706 ..	186 33	19297-V7213 ..	186 33	23331-Z9002 ..	233 49							
19207-V0707 ..	186 33	19312-R8100 ..	186 32	23333-Z9001 ..	233 49							
19208-V0700 ..	186 33				23337-06J01 ..	233 49							
19208-V0701 ..	186 33	20000			23340-Z9003 ..	233 49							
19208-V0702 ..	186 33				23341-V0600 ..	233 49							
19208-V0703 ..	186 33	21010-06J29 ..	210 37	23343-06J01 ..	233 49							
19208-V0704 ..	186 33	21014-34N01 ..	210 37	23358-V0600 ..	233 49							
19209-V0700 ..	186 33	21035-51H00 ..	210 37	23369-Z9001 ..	233 49							
19210-16A00 ..	186 33	21035-51H01 ..	210 37	23372-V0600 ..	233 49							
19211-V0700 ..	186 33	21046-51H01 ..	210 37	23383-Z9002 ..	233 49							
19212-35V00 ..	186 33	21048-Z5500 ..	210 37	23383-Z9003 ..	233 49							
19235-V0700 ..	186 32	21051-06J00 ..	210 37	23383-Z9007 ..	233 49							
19236-V0700 ..	186 32	21051-51H01 ..	210 37	23470-06J01 ..	233 49							
19240-35V10 ..	186 32	21091-51H03 ..	210 37	24210-89932 ..	140 23							
19240-51H00 ..	186 32	21200-05D02 ..	210 37	24210-89991 ..	111 11							
19242-V0700 ..	186 33	21304-06J02 ..	213 39	..	213 39							
19243-16A00 ..	186 32	21305-30J0A ..	213 39	24210-S090A ..	231 47							
19243-43G00 ..	186 34	21334-02N00 ..	150 25	24211-89944 ..	213 39							
19244-06J00 ..	186 34	..	213 39	24220-V6600 ..	140 23							
19244-06J01 ..	186 34	21334-05D04 ..	213 39	25080-89903 ..	210 37							
19244-23G00 ..	186 32	21334-30J01 ..	213 39	25240-Z550A ..	110 9							
19247-R8300 ..	186 34	21355-30J00 ..	213 39										
19247-V0700 ..	186 33	22630-10G00 ..	210 37										
19250-10H00 ..	186 32	22698-C8600 ..	220 43	30000									
19250-10H01 ..	186 32	23100-51H0A ..	231 47	30401-51H00 ..	110 9							
19251-51H00 ..	186 33	23102-51H00 ..	231 47	30412-P5100 ..	110 9							
19252-V0700 ..	186 33	23108-51H0A ..	231 47	30413-61700 ..	110 9							
19253-V0700 ..	186 33	23118-51H0A ..	231 47	33296-43G00 ..	230 45							
.. 186	34	23120-58S00 ..	231 47										