

第五部分 操纵系统目录

Part V Control system contents

- | | | | | |
|-------------------------------------|------------------------------------|-------------------------------------|------------------------------------|-------------------------------------|
| Ⓐ CPCD30/35-XRG71 | Ⓐ ³ CPC30/35/38-XRG71 | Ⓑ CPCD30/35/38-XRG72 | Ⓑ ² CPCD30/35/38-XRG72F | Ⓑ ³ CPC30/35/38-XRG72 |
| Ⓑ ⁴ CPCD30/35/38-XRG72J | Ⓑ ⁵ CPC30/35/38-XRG72J | Ⓒ CPCD30-XRW10 | Ⓒ ¹ CPCD30-XRW10B | Ⓒ ² CPCD30-XRW10F |
| Ⓒ ³ CPC30-XRW10 | Ⓓ ¹ CPCD30/35/38-XRW33B | Ⓓ ² CPCD30/35/38-XRW33F | Ⓔ CPCD30/35-XRW43 | Ⓕ CPCD30/35/38-XRW73 |
| Ⓒ ¹ CPCD30/35/38-XRW55B | Ⓒ ² CPCD30/35/38-XRW55F | Ⓒ ³ CPC30/35/38-XRW55 | Ⓖ CPCD30/35-XRW56 | Ⓖ ¹ CPCD30/35/38-XRW56B |
| Ⓖ ² CPCD30/35/38-XRW56F | Ⓘ CPQD30/35-XRW22 | Ⓘ ¹ CPQD30/35/38-XRW22B | Ⓙ CPQYD30/35/38-XRW22 | Ⓙ CPCD30/35/38-XRG2 |
| Ⓖ ² CPCD30/35/38-XRW92F | Ⓘ ² CPQD30/35/38-XRW22F | Ⓘ ² CPQYD30/35/38-XRW22F | Ⓛ ² CPYD30/35/38-XRW52F | Ⓑ ⁶ CPCD30/35/38-XRG72JF |
| Ⓙ ¹ CPQYD30/35/38-XRW22B | Ⓔ ² CPCD30/35/38-XRW43F | Ⓔ ¹ CPCD30/35/38-XRW43B | | |

序号 Item	名称 Description	适用车型 Serial No.	页码 Page
图 1 Fig. 1	制动微动踏板总成 Brake and inching pedal assy	Ⓐ Ⓑ Ⓑ ⁴ Ⓒ Ⓔ Ⓕ Ⓖ Ⓖ ¹ Ⓙ Ⓛ	5-1
图 2 Fig. 2	制动微动踏板总成 Brake and inching pedal assy	Ⓒ ¹ Ⓓ ¹ Ⓘ ¹ Ⓒ ¹ Ⓖ ¹ Ⓙ ¹ Ⓔ ¹	5-5
图 3 Fig. 3	制动离合踏板总成 Brake clutch pedal assy	Ⓐ ³ Ⓑ ³ Ⓑ ⁵ Ⓒ ³ Ⓒ ³	5-9
图 4 Fig. 4	制动总泵总成 Brake pump assy	全部车型 All models of truck	5-13
图 5 Fig. 5	油门操纵总成(电子) Throttle control assy (Electron)	Ⓐ Ⓐ ³ Ⓑ Ⓑ ² Ⓑ ³ Ⓑ ⁴ Ⓑ ⁵ Ⓔ Ⓖ ² Ⓔ ² Ⓔ ¹	5-14
图 6 Fig. 6	油门操纵总成 Throttle control assy	Ⓒ Ⓒ ¹ Ⓒ ² Ⓒ ³ Ⓓ ¹ Ⓓ ² Ⓖ Ⓖ ¹ Ⓖ ² Ⓕ	5-15
图 7 Fig. 7	油门操纵总成 Throttle control assy	Ⓘ Ⓘ ¹ Ⓙ Ⓘ ² Ⓘ ² Ⓕ ² Ⓙ ¹	5-18

序号 Item	名称 Description	适用车型 Serial No.	页码 Page
图 8 Fig. 8	油门操纵总成 Throttle control assy	Ⓔ ¹ Ⓔ ² Ⓔ ³	5-20
图 9 Fig. 9	换挡操纵总称 Change over control assy	Ⓐ ³ Ⓑ ³ Ⓒ ³ Ⓑ ⁵ Ⓔ ³	5-22
图 10 Fig. 10	手制动操纵 Hand brake control	全部车型 All models of truck	5-23
图 11 Fig. 11	制动微动踏板总成 Brake and inching pedal assy	Ⓑ ² Ⓒ ² Ⓓ ² Ⓔ ² Ⓗ ² Ⓖ ² Ⓘ ² Ⓙ ² Ⓛ ² Ⓜ ⁶ Ⓔ ²	5-24
图 12 Fig. 12	制动总泵总成 Brake pump assy	Ⓑ ² Ⓒ ² Ⓓ ² Ⓔ ² Ⓗ ² Ⓖ ² Ⓘ ² Ⓙ ² Ⓛ ² Ⓜ ⁶ Ⓔ ²	5-27
图 13 Fig. 13	微动推杆支架 Inching Budge push-rod stents	Ⓒ ¹ Ⓓ ¹ Ⓘ ¹ Ⓗ ¹ Ⓔ ¹ Ⓙ ¹ Ⓔ ¹	5-28
图 14 Fig. 14	油门操纵总成 Throttle control assy	Ⓔ ¹	5-29

图 1 制动微动踏板总成

Fig. 1 Brake and inch pedal assy

- (A) CPCD30/35/38-XRG71 (B) CPCD30/35/38-XRG72 (C) CPCD30/35/38-XRG72J (C) CPCD30-XRW10
(E) CPCD30/35/38-XRW43 (F) CPCD30/35/38-XRW73 (H) CPCD30/35/38-XRW56 (I) CPQD30/35/38-XRW22
(J) CPQYD30/35/38-XRW22 (Q) CPCD30/35/38-XRG2

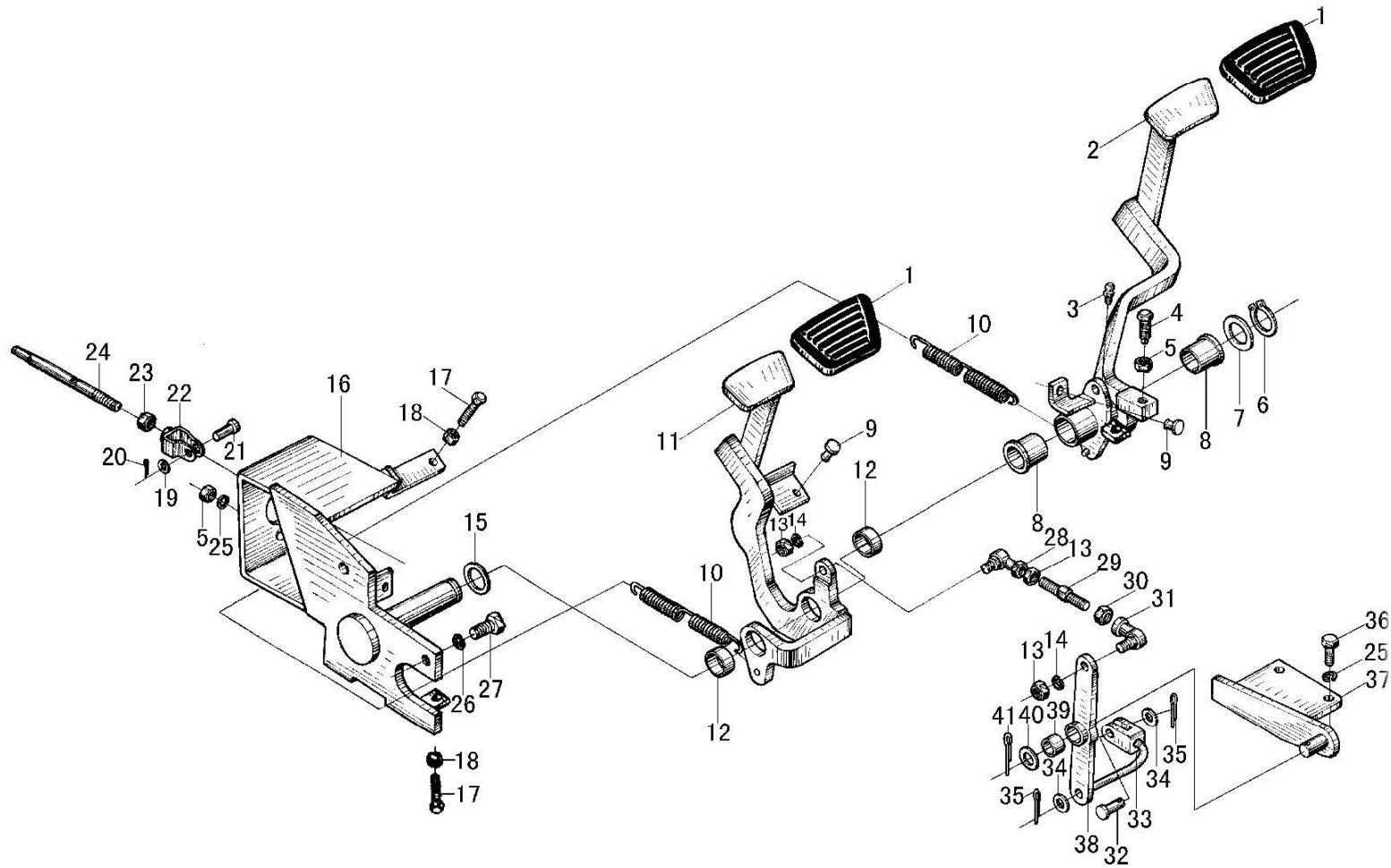


图 1 制动微动踏板总成
Fig. 1 Brake and inch pedal assy

- (A) CPCD30/35/38-XRG71 (B) CPCD30/35/38-XRG72 (E4) CPCD30/35/38-XRG72J (C) CPCD30-XRW10
 (E) CPCD30/35/38-XRW43 (F) CPCD30/35/38-XRW73 (H) CPCD30/35/38-XRW56 (I) CPQD30/35/38-XRW22
 (J) CPQYD30/35/38-XRW22 (Q) CPCD30/35/38-XRG2

序号 Item	物料码 Part No.	名称 Description	数量 Qty	备注或适用车型 Remarks or Serial No.	原物料码 Original Part No.
A	20510000082	制动微动踏板总成 inch pedal assy	1	包含/INC: 1-42	N160-510000-001
1	205100180001	踏板垫 Pedal pad	2		N163-512001-000
2	205100170043	制动踏板 Brake pedal	1		N160-514100-001
3	300170040003	油杯M6 Oil grease M6	1		G001152-006000-00
4	310010010032	螺栓 Bolt	1		N163-510002-000
5	300020010006	螺母 M10 Nut M10	3		G006170-000010-00
6	300060030013	挡圈 28 Snap ring 28	1		G0894P1-000028-00
7	205100090013	垫片 Shim	1		N163-510004-000
8	205100320007	套 Bushing	2		N163-514001-000
9	205100270001	止推圈 Thrust ring	2		N163-512002-000
10	205100050013	弹簧 Spring	2		N163-510003-000
11	205100170033	微动踏板 Inching pedal	1		N160-511100-000
12	205100320009	套 Bushing	2		N163-512003-000
13	300020300006	螺母M8 Nut M8	3		G006172-000008-00
14	300030010015	垫圈8 Washer 8	2		G000093-000008-00

图 1 制动微动踏板总成
Fig. 1 Brake and inch pedal assy

- (A) CPCD30/35/38-XRG71 (B) CPCD30/35/38-XRG72 (E4) CPCD30/35/38-XRG72J (C) CPCD30-XRW10
(E) CPCD30/35/38-XRW43 (F) CPCD30/35/38-XRW73 (H) CPCD30/35/38-XRW56 (I) CPQD30/35/38-XRW22
(J) CPQYD30/35/38-XRW22 (Q) CPCD30/35/38-XRG2

序号 Item	物料码 Part No.	名称 Description	数量 Qty	备注或适用车型 Remarks or Serial No.	原物料码 Original Part No.
15	205100090012	垫片 Pad	1		N163-510001-000
16	205100080004	底座 Seat	1		N163-511000-001
17	300010040178	螺栓M8×30 Bolt M8×30	2		G005783-008030-00
18	300020010016	螺母M8 Nut M8	2		G006170-000008-00
A2	205100230006	推杆总成 Thrust rod assy	1	包含 INC:19-24	N163-513000-000
19	300030100010	垫圈 8 Washer 8	1		G000848-000008-00
20	205100160010	锁销 1.6B The locking pin 1.6B	1		N163-513002-000
21	300050040038	销轴 B8×24 Pin shaft B8×24	1		G000882-008024-01
22	205100210011	推耳 Push bracket	1		N163-513100-000
23	300020010006	螺母M10 Nut M10			G006170-000010-00
24	205100220012	推杆 Thrust rod	1		N163-513001-000
25	300030010001	垫圈 10 Washer 10	4		G000093-000010-00
26	300030010002	垫圈 12 Washer 12	2		G000093-000012-00
27	300010060024	螺栓 M12×1.25×25 Bolt M12×1.25×25	2		G005786-012025-00
28	300140180003	球头杆端关节轴承 Bearing	1		J005306-0000008-00

图 1 制动微动踏板总成
Fig. 1 Brake and inch pedal assy

- (A) CPCD30/35/38-XRG71 (B) CPCD30/35/38-XRG72 (E) CPCD30/35/38-XRW43 (F) CPCD30/35/38-XRW73 (J) CPQD30/35/38-XRW22 (Q) CPCD30/35/38-XRG2
 (H) CPCD30/35/38-XRW56 (I) CPQD30/35/38-XRW22
 (G) CPCD30/35/38-XRG72J (C) CPCD30-XRW10

序号 Item	物料码 Part No.	名称 Description	数量 Qty	备注或适用车型 Remarks or Serial No.	原物料码 Original Part No.
29	205100140015	调节杆 Adjusting rod	1	1.0t-3.5t XR	N160-510005-001
30	300020300007	螺母 M8-左旋 Nut M8-Left	1		G006172-100008-00
31	300140180001	轴承SQL8C-RS Bearing	1		J005306-0000008-01
32	300050040041	销轴B8×32 Pin shaft B8×32	1		G000882-008032-01
33	205100120005	连杆 Rod	1		N160-517000-001
34	300030040014	垫圈8 Washer 8	2		G0097P1-000008-00
35	205100160010	锁销 1.6B The locking pin 1.6B	2		N163-513002-000
36	300010040009	螺栓 M10×25 Bolt M10×25	2		G005783-010025-00
37	205100080007	底座 Seat	1		N160-512000-000
38	205100120007	摇臂 Rocker arm	1		N160-513000-001
39	205100320010	套 Bushing	1		N160-510003-000
40	300030040005	垫圈 16 Washer 16	1		G0097P1-000016-00
41	300050010049	销 4×45 Pin 4×45	1		G000091-004045-00
42	205100310015	制动总泵总成 Brake pump assy	1	见图 4 序号 1 See Fig.4 Item 1	N160-518000-000

图 2 制动微动踏板总成
 Fig. 2 Brake and inch pedal assy

- ① CPCD30-XRW10B ⑩ CPCD30/35/38-XRW33B ⑪ CPQD30/35/38-XRW22B ⑫ CPCD30/35/38-XRW55B
 ⑬ CPCD30/35/38-XRW56B ⑭ ⑮
 CPQYD30/35/38-XRW22B CPCD30/35/38-XRW43B

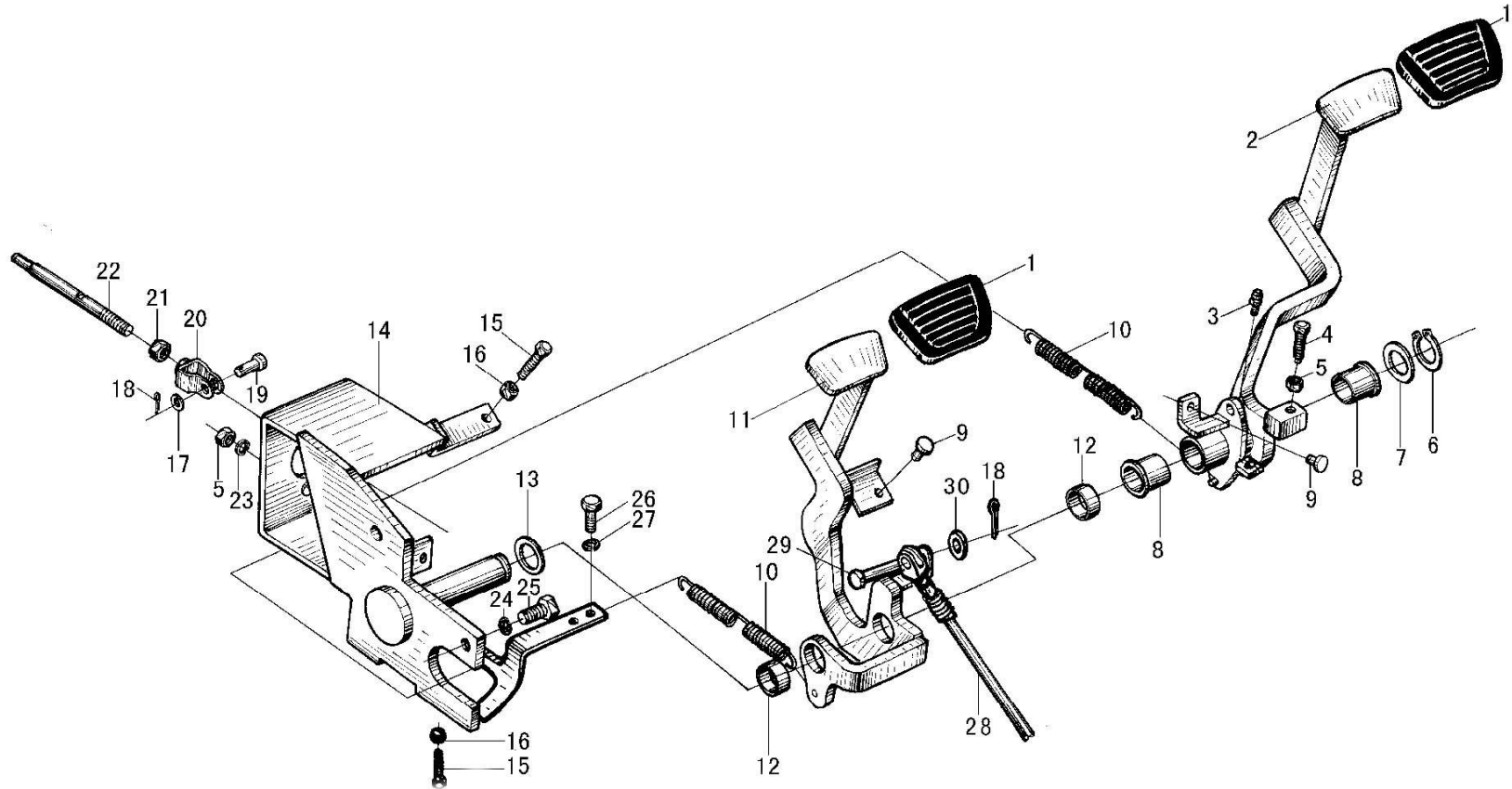
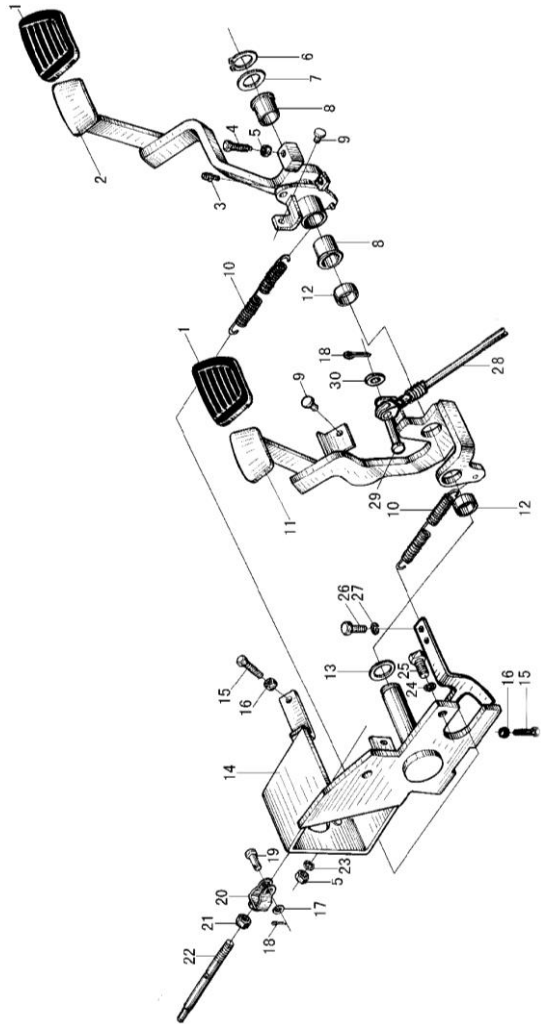


图2 制动微动踏板总成
Fig. 2 Brake and inch pedal assy

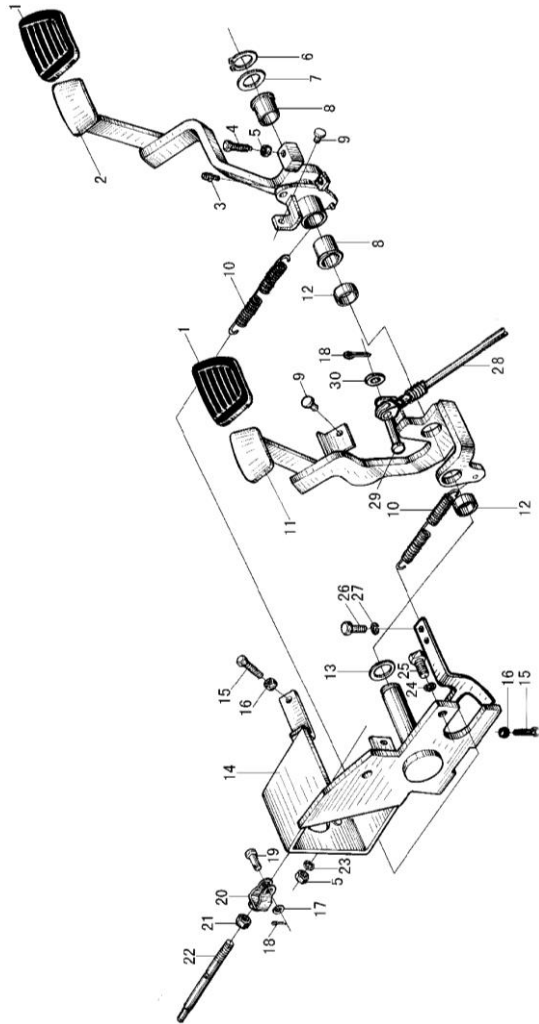
Ⓒ1 CPCD30-XRW10B Ⓓ1 CPCD30/35/38-XRW33B Ⓜ1 CPQD30/35/38-XRW22B ⓐ1 CPCD30/35/38-XRW55B
Ⓜ1 CPCD30/35/38-XRW56B Ⓜ1 Ⓔ1
CPQYD30/35/38-XRW22B CPCD30/35/38-XRW43B



序号 Item	物料码 Part No.	名称 Description	数量 Qty	备注或适用车型 Remarks or Serial No.	原物料码 Original Part No.
A	20510000081	制动微动踏板总成 inch pedal assy	1	包含/INC: 1-32	R561-510000-000
1	205100180001	踏板垫 Pedal pad	2		N163-512001-000
2	205100170041	制动踏板 Brake pedal	1		R561-515100-000
3	300170040003	油杯M6 Oil grease	1		G001152-006000-00
4	310010010032	螺栓 Bolt	1		N163-510002-000
5	300020010006	螺母 M10 Nut M10	3		G006170-000010-00
6	300060030013	挡圈 28 Snap ring	1		G0894P1-000028-00
7	205100090013	垫片 Shim	1		N163-510004-000
8	205100320007	套 Bushing	2		N163-514001-000
9	205100270001	止推圈 Thrust ring	2		N163-512002-000
10	205100050013	弹簧 Spring	2		N163-510003-000
11	205100170032	微动踏板 Inching pedal	1		R561-514100-000
12	205100320009	套 Bushing	2		N163-512003-000
13	205100090012	垫片 Shim	1		N163-510001-000
14	205100080006	底座 Seat	1		R561-511000-000

图2 制动微动踏板总成
Fig. 2 Brake and inch pedal assy

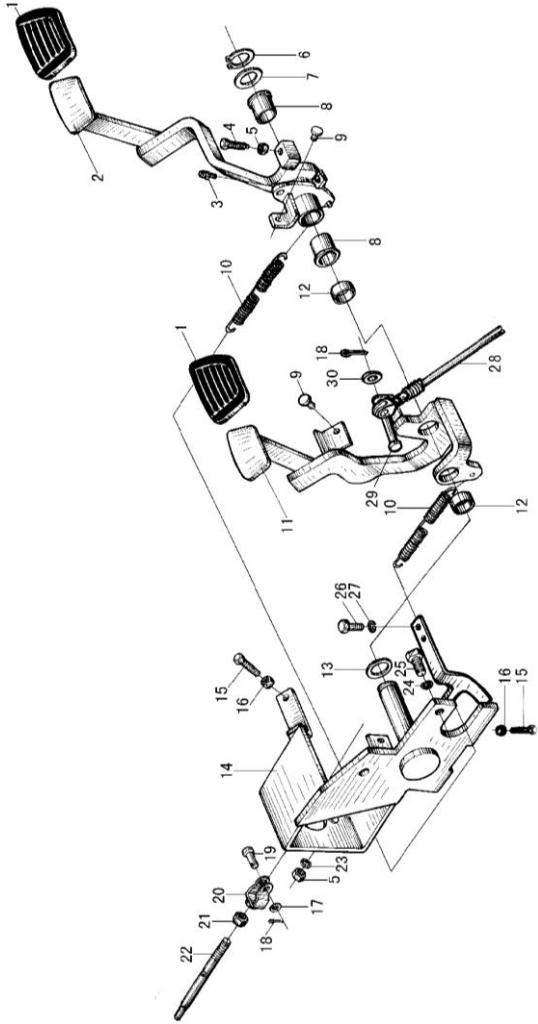
Ⓒ1 CPCD30-XRW10B Ⓓ1 CPCD30/35/38-XRW33B Ⓘ1 CPQD30/35/38-XRW22B ⓐ1 CPCD30/35/38-XRW55B
ⓗ1 CPCD30/35/38-XRW56B ⓙ1 ⓔ1
CPQYD30/35/38-XRW22B CPCD30/35/38-XRW43B



序号 Item	物料码 Part No.	名称 Description	数量 Qty	备注或适用车型 Remarks or Serial No.	原物料码 Original Part No.
15	300010040178	螺栓M8×30 Bolt M8×30	2		G005783-008030-00
16	300020010016	螺母M8 Nut M8	2		G006170-000008-00
A2	205100230006	推杆总成 Thrust rod assy	1	包含 INC:17-22	N163-513000-000
17	300030100010	垫圈 8 Washer 8	1		G000848-000008-00
18	205100160010	锁销 1.6B The locking pin 1.6B	2		N163-513002-000
19	300050040015	销轴 B8×24 Pin shaft B8×24	1		G000882-008024-00
20	205100210011	推耳 Push bracket	1		N163-513100-000
21	300020010006	螺母M10 Nut 10	1		G006170-000010-00
22	205100220012	推杆 Thrust rod	1		N163-513001-000
23	300030010001	垫圈 10 Washer	2		G000093-000010-00
24	300030010002	垫圈 12 Washer	2		G000093-000012-00
25	300010060024	螺栓 M12×1.25×25 Bolt M12×1.25×25	2		G005786-012025-00
26	300010040145	螺栓 M6×12 Bolt M6×12	2		G005783-006012-00
27	300030010014	垫圈 6 Washer 6	2		G000093-000006-00
28	205100100009	微动软轴 Inching shaft	1		R561-512000-000

图 2 制动微动踏板总成
Fig. 2 Brake and inch pedal assy

ⓐ CPCD30-XRW10B ⓑ CPCD30/35/38-XRW33B ⓓ CPQD30/35/38-XRW22B ⓔ CPCD30/35/38-XRW55B
ⓑ CPCD30/35/38-XRW56B ⓓ CPQYD30/35/38-XRW22B ⓔ CPCD30/35/38-XRW43B



序号 Item	物料码 Part No.	名称 Description	数量 Qty	备注或适用车型 Remarks or Serial No.	原物料码 Original Part No.
29	300050040036	销 8×18 Pin 8×18	1		G000882-008018-01
30	300030040014	垫圈 8 Washer 8	1		G0097P1-000008-00
31		微动推杆支架 Inching Budge push-rod stents	1	见图 12 序号 A See Fig.12 Item A	
32		制动总泵总成 Brake pump assy	1	见图 4 序号 1 See Fig.4 Item 1	

图 3 制动离合踏板总成
Fig. 3 Brake clutch pedal assy

Ⓐ CPC30/35/38-XRG71 Ⓑ CPC30/35/38-XRG72 Ⓒ CPC30/35/38-XRG72J Ⓓ CPC30-XRW10
Ⓔ CPC30/35/38-XRW55

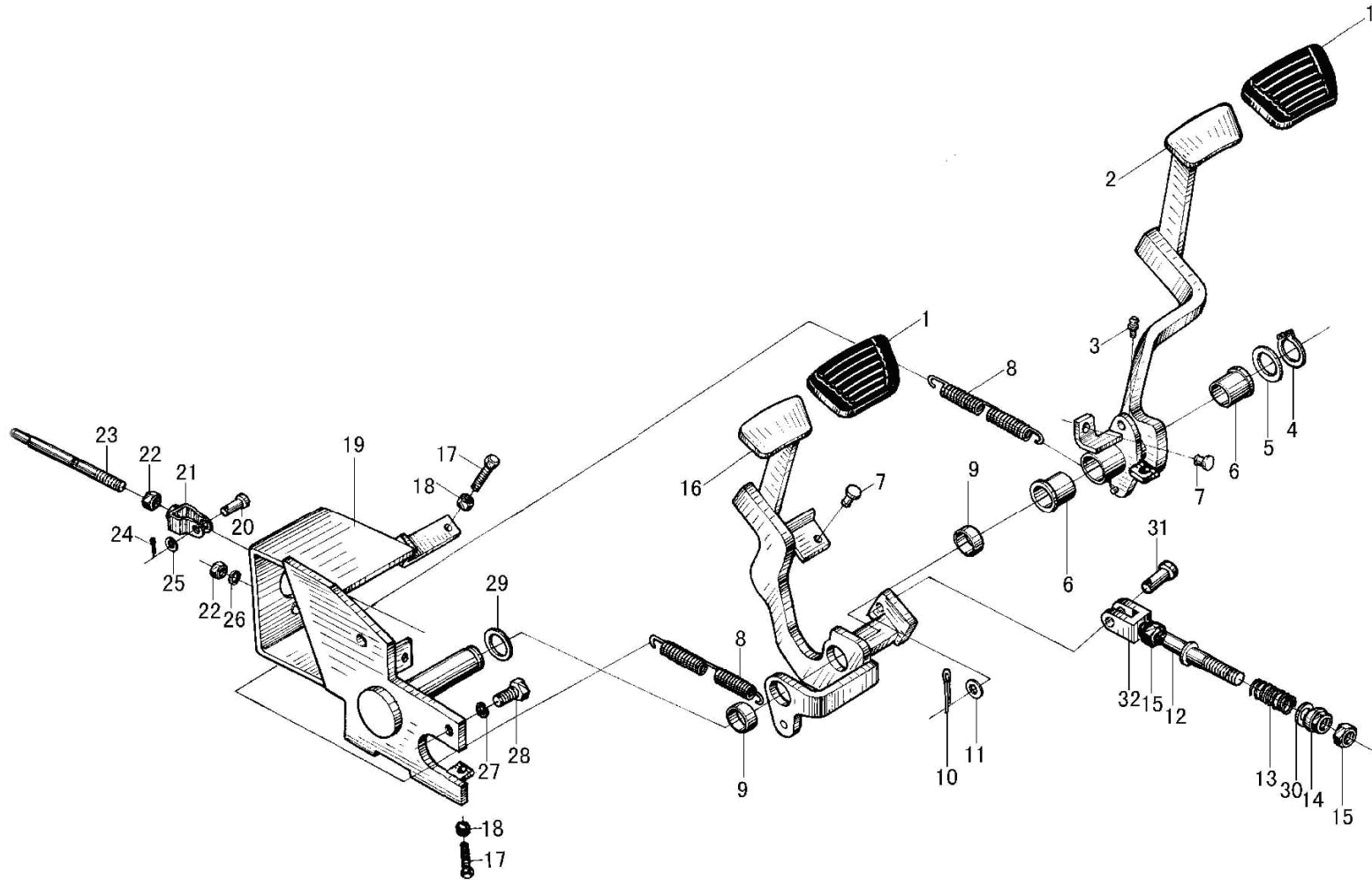
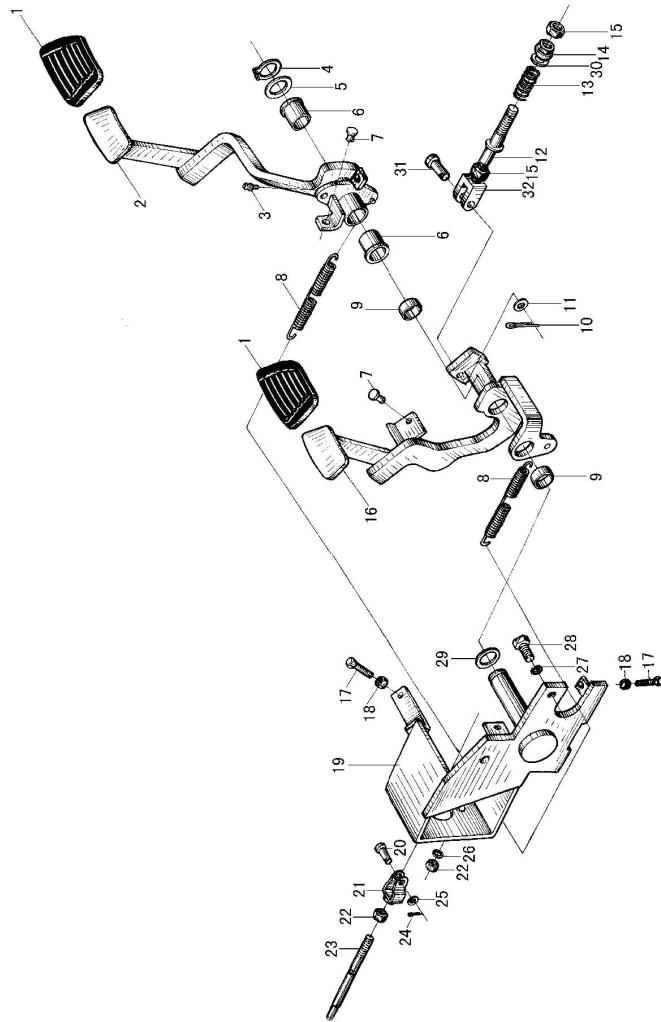


图3 制动离合踏板总成
Fig. 3 Brake clutch pedal assy

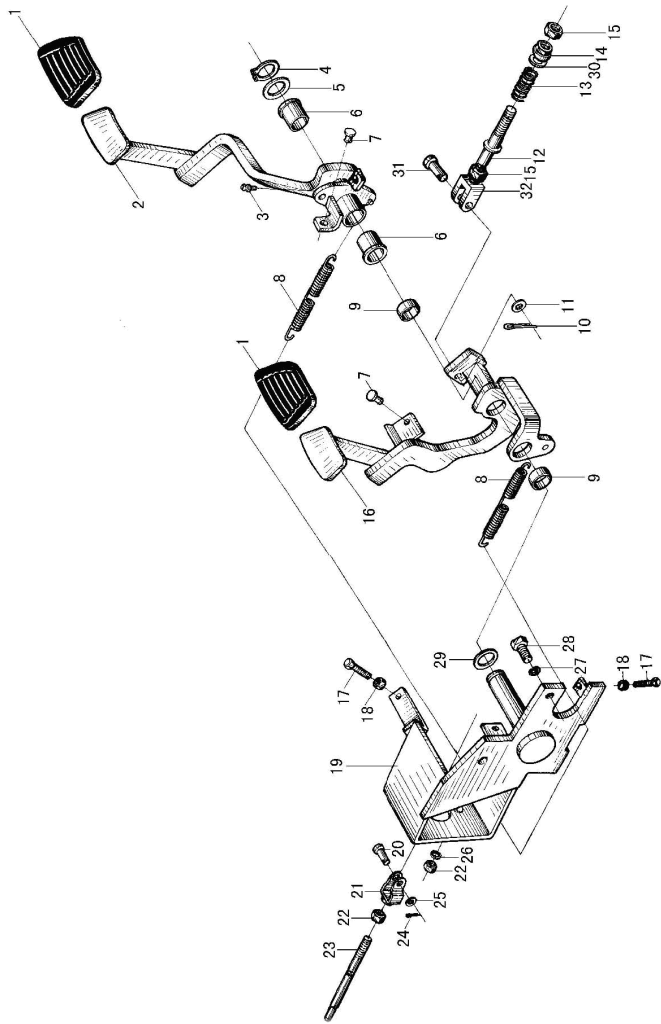
Ⓐ3 CPC30/35/38-XRG71 Ⓑ3 CPC30/35/38-XRG72 Ⓒ5 CPC30/35/38-XRG72J Ⓒ3 CPC30-XRW10
Ⓒ3 CPC30/35/38-XRW55



序号 Item	物料码 Part No.	名称 Description	数量 Qty	备注或适用车型 Remarks or Serial No.	原物料码 Original Part No.
A1	205100000065	制动离合踏板总成 Brake clutch pedal	1		N150-510000-001
1	205100180001	踏板垫 Pedal pad	2		N163-512001-000
2	205100170042	制动踏板 Brake pedal	1		N150-512100-001
3	300170040003	油杯 M6 Oil grease M6	1		G001152-006000-00
4	300060030013	垫圈 28 Snap ring 28	1		G0894P1-000028-00
5	205100090013	垫片 Shim	1		N163-510004-000
6	205100320007	套 Bush	2		N163-514001-000
7	205100270001	止推圈 Thrust ring	2		N163-512002-000
8	205100050013	弹簧 Spring	2		N163-510003-000
9	205100320009	套 Bush	2		N163-512003-000
10	205100160013	锁销 1.8B The locking pin 1.8B	1		R441-500002-000
11	300030040002	垫圈10 Washer 10	1		G0097P1-000010-00
12	205100130013	拉杆 Pull rod	1		N150-513000-001
13	205100050019	压缩弹簧 Spring	1		N150-511002-000
14	310020050009	球形螺母 Nut	1		N150-511001-000

图3 制动离合踏板总成
Fig. 3 Brake clutch pedal assy

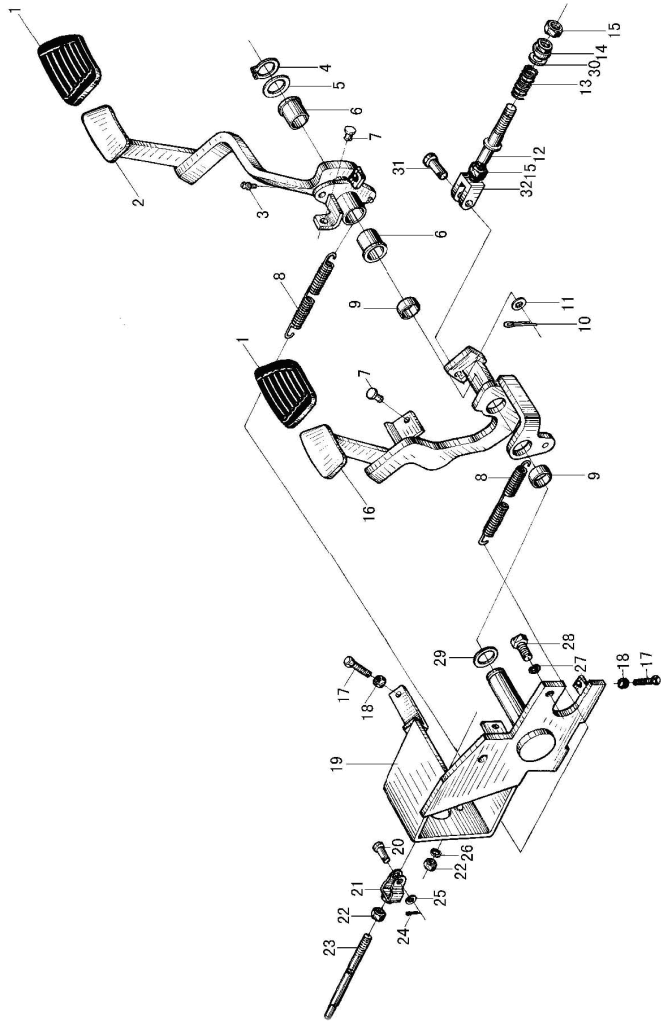
Ⓐ3 CPC30/35/38-XRG71 Ⓑ3 CPC30/35/38-XRG72 Ⓔ3 CPC30/35/38-XRG72J Ⓒ3 CPC30-XRW10
Ⓒ3 CPC30/35/38-XRW55



序号 Item	代号 Part No.	名称 Description	数量 Qty	备注或适用车型 Remarks or Serial No.	原物料码 Original Part No.
15	300020020002	螺母 M10×1 Nut M10×1	1		G006171-000010-00
16	205100170022	离合踏板 Clutch pedal	1		N150-511100-001
17	300010040178	螺栓M8×30 Bolt M8×30	2		G005783-008030-00
18	300020010016	螺母 M8 Nut M8	2		G006170-000008-00
19	205100080004	底座 Seat	1		N163-511000-001
A2	205100230006	推杆总成 Thrust rod assy	1	包含 INC:20-25	N163-513000-000
20	300050040038	销轴B8×24 Pin shaft B8×24	1		G000882-008024-01
21	205100210011	推耳 Push bracket	1		N163-513100-000
22	300020010006	螺母 M10 Nut M10	3		G006170-000010-00
23	205100220012	推杆 Thrust rod	1		N163-513001-000
24	205100160010	锁销 1.6B The locking pin 1.6B	1		N163-513002-000
25	300030100010	垫圈8 Washer 8	1		G000848-000008-00
26	300030010001	垫圈10 Washer 10	2		G000093-000010-00
27	300030010002	垫圈12 Washer 12	2		G000093-000012-00
28	300010060024	螺栓M12×1.25×25 Bolt M12×1.25×25	2		G005786-012025-00

图3 制动离合踏板总成
Fig. 3 Brake clutch pedal assy

Ⓐ CPC30/35/38-XRG71 Ⓑ CPC30/35/38-XRG72 Ⓒ CPC30/35/38-XRG72J Ⓓ CPC30-XRW10
Ⓔ CPC30/35/38-XRW55



序号 Item	物料码 Part No.	名称 Description	数量 Qty	备注或适用车型 Remarks Or Serial No.	原物料码 Original Part No.
29	205100090012	垫片 Shim	1		N163-510001-000
30	300030020009	垫圈10 Washer 10	1		G000095-000010-00
31	300050040019	销轴 B10×32 Pin shaft B10×32	1		G000882-010032-01
32	205100030002	叉头 Fork	1		N150-510001-000
33		制动总泵总成 Brake pump assy	1	见图4 序号1 See Fig.4 Item 1	

图 4 制动总泵总成
Fig.4 Brake pump assy

全部车型
All models of truck

序号 Item	物料码 Part No.	名称 Description	数量 Qty	备注或适用车型 Remarks Or Serial No.	原物料码 Original Part No.
1	205100310015	制动总泵总成 Brake pump assy	1		N160-518000-000
A1	206300230320	制动油管总成 Brake pipe assy	1		XR310-550000-000
A2	206300200154	制动油管总成 Brake pipe assy	1		XRF310-550000-000
2	206300230318	右制动油管总成 Right brake pipe assy	1	<2018-05-26 包含/INC:3	XR310-550200-000
2	206300230344	右制动油管总成 Right brake pipe assy		≥2018-05-26	XRF310-550200-000
3	206300060004	管套 Bushing	3		N163-550201-000
4	206300230323	左制动油管总成 Left brake pipe assy	1	<2018-05-26	XR310-550100-000
4	206300230343	左制动油管总成 Left brake pipe assy	1	≥2018-05-26	XRF310-550100-000

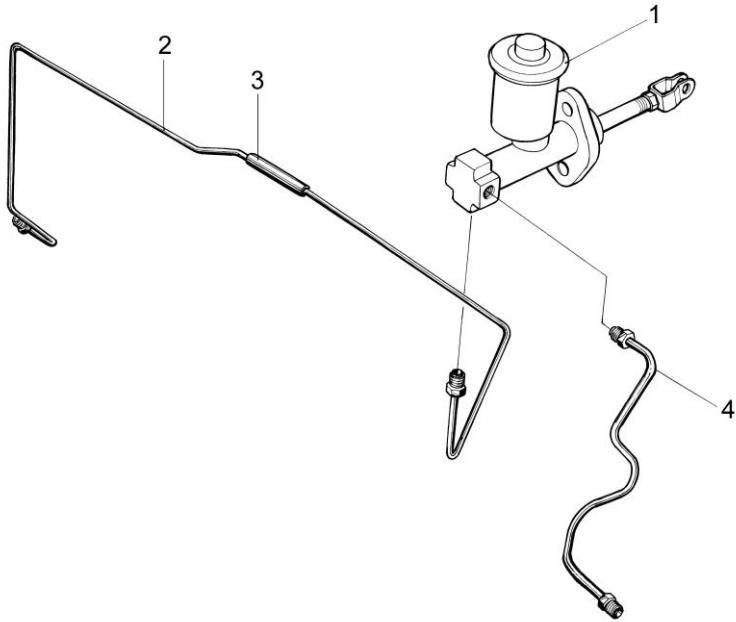


图5 油门操纵总成(电子)
Fig.5 Throttle control assy (Electron)

Ⓐ CPCD30/35/38-XRG71 Ⓒ CPC30/35/38-XRG71 Ⓑ CPCD30/35/38-XRG72 Ⓔ CPCD30/35/38-XRG72F
 Ⓑ CPC30/35/38-XRG72 Ⓓ CPCD30/35/38-XRG72J Ⓕ CPC30/35/38-XRG72J Ⓖ CPCD30/35/38-XRW43
 Ⓔ CPCD30/35/38-XRW43F Ⓖ CPCD30/35/38-XRW43B

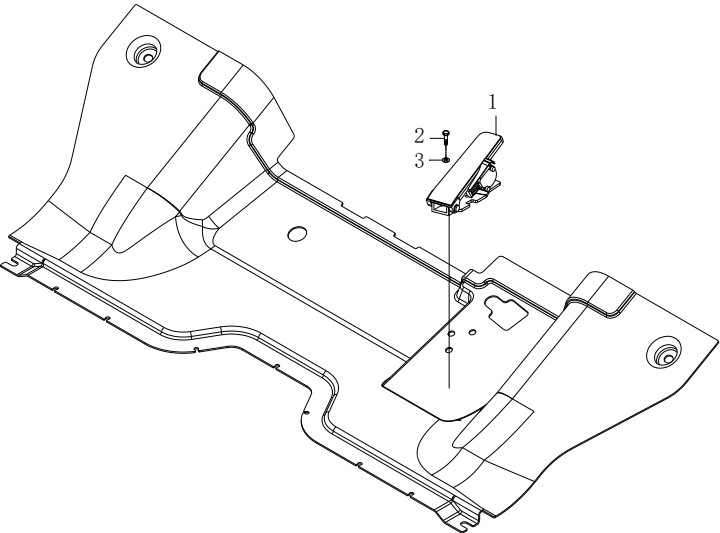
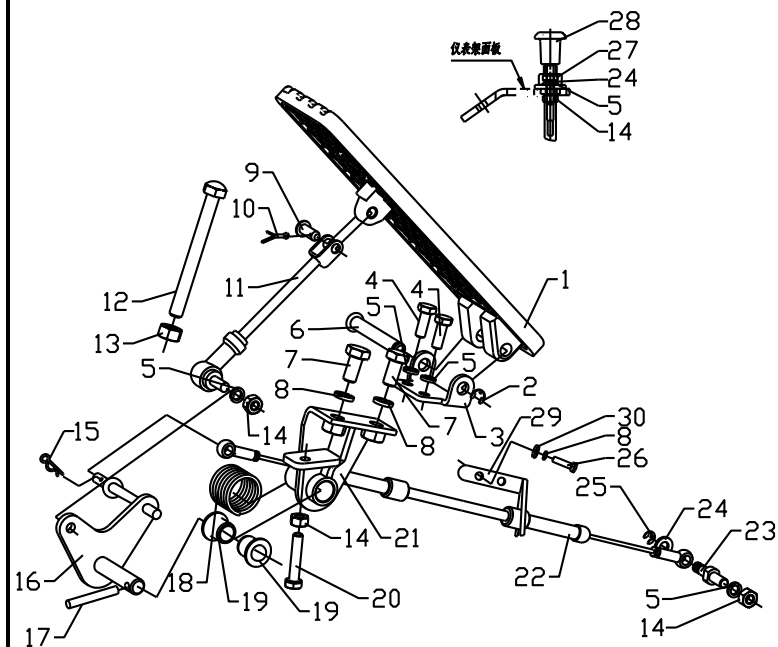
图5 油门操纵总成(电子) Fig.5 Throttle control assy (Electron)	序号 Item	物料码 Part No.	名称 Description	数量 Qty	备注或适用车型 Remarks Or Serial No.	原物料码 Original Part No.
	1	207900310005	电子油门踏板 Acceleration pedal,Electron	1		XB455-700002-000
	2	300010040169	螺栓M8×16 Bolt M8×16	3		G005783-008016-00
	3	300030010015	垫圈 8 Washer 8	3		G000093-000008-00

图6 油门操纵总成
Fig.6 Throttle control assy

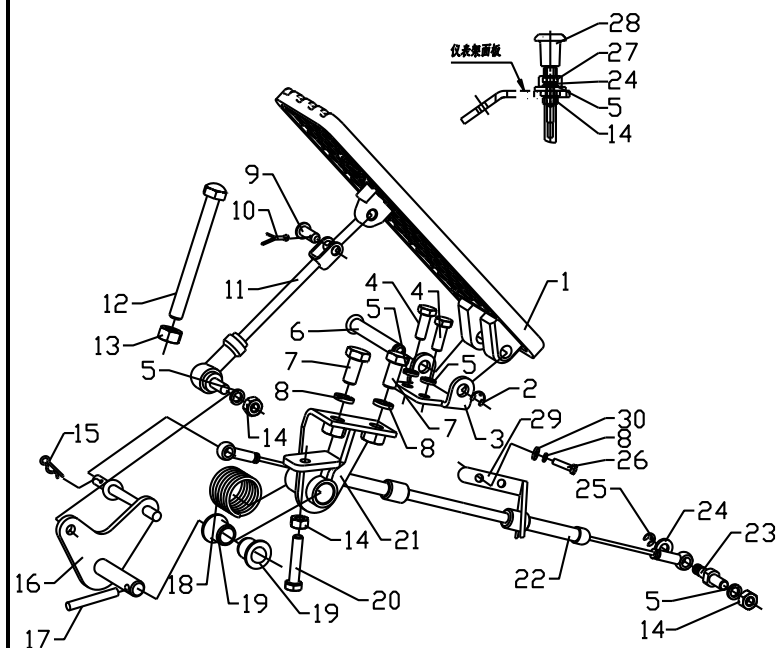
© CPCD30-XRW10 ©1 CPCD30-XRW10B ©2 CPCD30-XRW10F ©3 CPC30-XRW10
 ©11 CPCD30/35/38-XRW33B ©22 CPCD30/35/38-XRW33F ©H CPCD30/35/38-XRW56 ©H1 CPCD30/35/38-XRW56B
 ©H2 CPCD30/35/38-XRW56F ©Q CPCD30/35/38-XRG2



序号 Item	物料码 Part NO.	名称 Description	数量 Qty	备注或适用车型 Remarks Or Serial NO.	原物料码 Original Part No.
1	205200080017	油门踏板 Throttle pedal	1		XF250-520001-000
2	300060060004	挡圈 6 Snap ring 6	1		G000896-000006-00
3	205200180014	支架 Support	1		XF250-520005-000
4	300010040148	螺栓 M6×16 Bolt M6×16	2		G005783-006016-00
5	300030010014	垫圈 6 Washer 6	4/6	◎6个	G000093-000006-00
6	205200200021	销轴 Shaft	1		XF250-520002-000
7	300010040169	螺栓 M8×16 Bolt M8×16	2		G005783-008016-00
8	300030010015	垫圈 8 Washer 8	4		G000093-000008-00
9	300050040027	销轴 B6×16 Pin shaft B6×16	1		G000882-006016-01
10	300050010015	销 2×12 Pin 2×12	1		G000091-002012-00
11	205200050009	连杆 Rod	1		XF250-521000-000
12	202200090002	限位螺栓 Thrust bolt	1		15PH-500001
13	300020010016	螺母 M8 Nut M8	1		G006170-000008-00
14	300020010005	螺母 M6 Nut M6	3/4	◎4个	G006170-000006-00
15	205200070001	锁销 6 Pin 6	1		XF250-520006-G00

图6 油门操纵总成
Fig.6 Throttle control assy

© CPCD30-XRW10 ©1 CPCD30-XRW10B ©2 CPCD30-XRW10F ©3 CPC30-XRW10
 ①1 CPCD30/35/38-XRW33B ②2 CPCD30/35/38-XRW33F ③ H CPCD30/35/38-XRW56 ④ H1 CPCD30/35/38-XRW56B
 ⑤ H2 CPCD30/35/38-XRW56F ⑥ Q CPCD30/35/38-XRG2



序号 Item	物料码 Part NO.	名称 Description	数量 Qty	备注或适用车型 Remarks Or Serial NO.	原物料码 Original Part No.
16	205200120010	摇臂 Rod arm	1		XF250-524000-000
17	300050090025	销 5×40 Pin 5×40	1		G000879-005040-00
18	205200060002	扭簧 Spring	1		XF250-520004-000
19	205200010002	衬套 Bushing	2		XF250-520003-000
20	300010040155	螺栓 M6×30 Bolt M6×30	1		G005783-006030-00
21	205200020126	支架 Support	1		XR312-522000-000
22	205200140101	油门拉线 Throttle line	1	© ©1 ©2 ©3 ①1 ②2	XF308-521000-000
22	205200140034	油门拉线 Throttle line	1	③ H ④ H1 ⑤ H2	XF250-523000-000
22	205200140036	油门拉线 Throttle line	1	⑥ Q <2018.05.14	XF255-521000-000
22	205200140103	油门拉线 Throttle line	1	⑥ Q ≥2018.05.14	XF3012-521000-000
23	205200040009	拉线挂销 Pin	1	© ©1 ©3 ©2	N121-510001-000
23	205200040012	拉线挂销 Pin	1	①1 ②2 ③ H ④ H1 ⑤ H2 ⑥ Q	GR501-520001-000
24	300030040013	垫圈 6 Washer 6	1/3	⑥ Q 3 个	G0097P1-000006-00
25	300060060007	挡圈 4 Snap ring 4	1		G000896-000004-00
26	300010040173	螺栓 M8×20 Bolt M8×20	2	③ H ④ H1 ⑤ H2	G005783-008020-00

图6 油门操纵总成
Fig.6 Throttle control assy

© CPCD30-XRW10 ©1 CPCD30-XRW10B ©2 CPCD30-XRW10F ©3 CPC30-XRW10
 ©11 CPCD30/35/38-XRW33B ©22 CPCD30/35/38-XRW33F (H) CPCD30/35/38-XRW56 (H1) CPCD30/35/38-XRW56B
 ©22 CPCD30/35/38-XRW56F © CPCD30/35/38-XRG2

	序号 Item	物料码 Part No.	名称 Description	数量 Qty	备注或适用车型 Remarks or Serial No.	原物料码 Original Part No.
	27	300010040150	螺栓M6×18 Bolt M6×18	2	◎	G005783-006018-00
	28	205200140098	熄火拉线总成 flameout back guy	1	◎	A300-524000-000
	29	205100020297	支架 Support	1		R968-510002-000
	30	300030040014	垫圈 8 Washer 8	2	(H) (H1) (H2)	G0097P1-000008-00

图7 油门操纵总成
Fig.7 Throttle control assy

① CPQD30/35/38-XRW22 ⑪ CPQD30/35/38-XRW22B ① CPQYD30/35/38-XRW22 ⑫ CPQD30/35/38-XRW2
② CPQYD30/35/38-XRW22F ⑫ CPYD30/35/38-XRW52F ①① CPQYD30/35/38-XRW22B 2F

序号 Item	代号 Part No.	名称 Description	数量 Qty	备注或适用车型 Remarks or Serial No.	原物料码 Original Part No.
1	205200080017	油门踏板 Throttle pedal	1		XF250-520001-000
2	300060060004	挡圈 6 Snap ring 6	1		G000896-000006-00
3	205200180014	支架 Support	1		XF250-520005-000
4	300010040148	螺栓 M6×16 Bolt M6×16	2		G005783-006016-00
5	300030010014	垫圈 6 Washer 6	3		G000093-000006-00
6	205200200021	销轴 Shaft	1		XF250-520002-000
7	300010040169	螺栓 M8×16 Bolt M8×16	2		G005783-008016-00
8	300030010015	垫圈 8 Washer 8	2		G000093-000008-00
9	300050040011	销轴 6×16 Pin shaft 6×16	1		G000882-006016-00
10	300050010015	销 2×12 Pin 2×12	1		G000091-002012-00
11	205200050009	连杆 Rod	1		XF250-521000-000
12	202200090002	限位螺栓 Thrust bolt	1		15PH-500001
13	300020010016	螺母 M8 Nut M8	1		G006170-000008-00
14	300020010005	螺母 M6 Nut M6	3		G006170-000006-00
15	205200070001	锁销 6 Pin 6	1		XF250-520006-G00

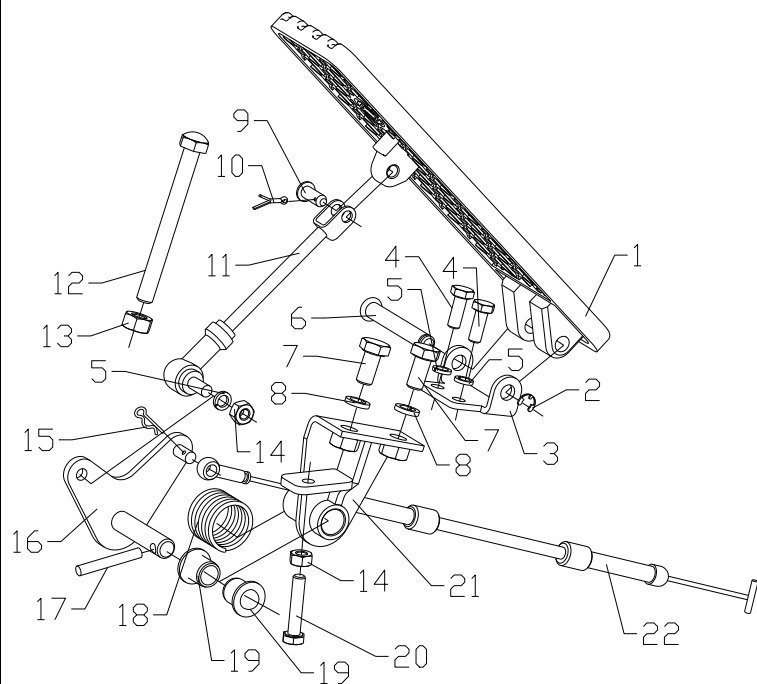


图7 油门操纵总成
Fig.7 Throttle control assy

① CPQD30/35/38-XRW22 ⑪ CPQD30/35/38-XRW22B ① CPQYD30/35/38-XRW22 ⑫ CPQD30/35/38-XRW22F
② CPQYD30/35/38-XRW22F ⑫ CPYD30/35/38-XRW52F ① CPQYD30/35/38-XRW22B

序号 Item	代号 Part No.	名称 Description	数量 Qty	备注或适用车型 Remarks or Serial No.	原物料码 Original Part No.
16	205200120010	摇臂 Rod arm	1		XF250-524000-000
17	300050090025	销 5×40 Pin 5×40	1		G000879-005040-00
18	205200060002	扭簧 Spring	1		XF250-520004-000
19	205200010002	衬套 Bushing	2		XF250-520003-000
20	300010040155	螺栓 M6×30 Bolt M6×30	1		G005783-006030-00
21	205200020126	支架 Support	1		XR312-522000-000
22	205200140040	油门拉线 Throttle line	1		XF251-523000-000

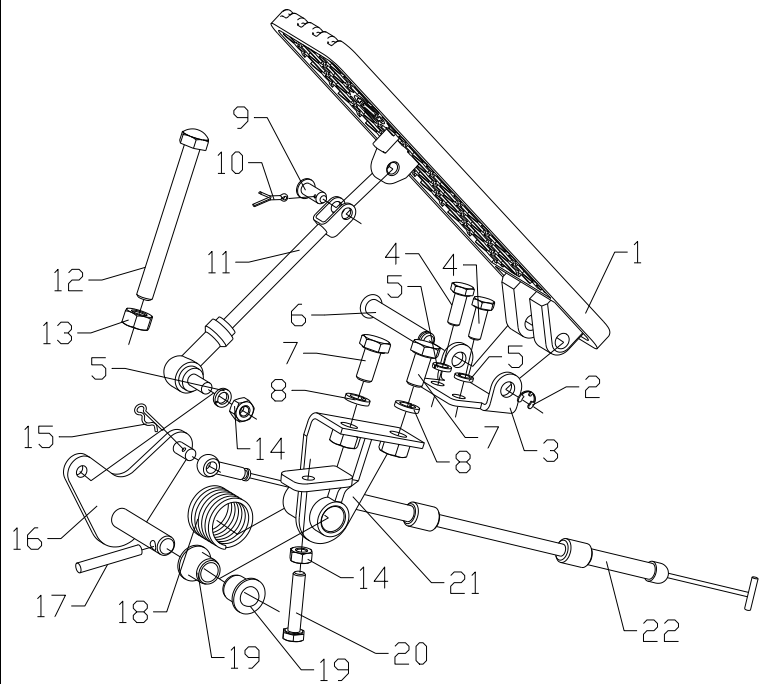
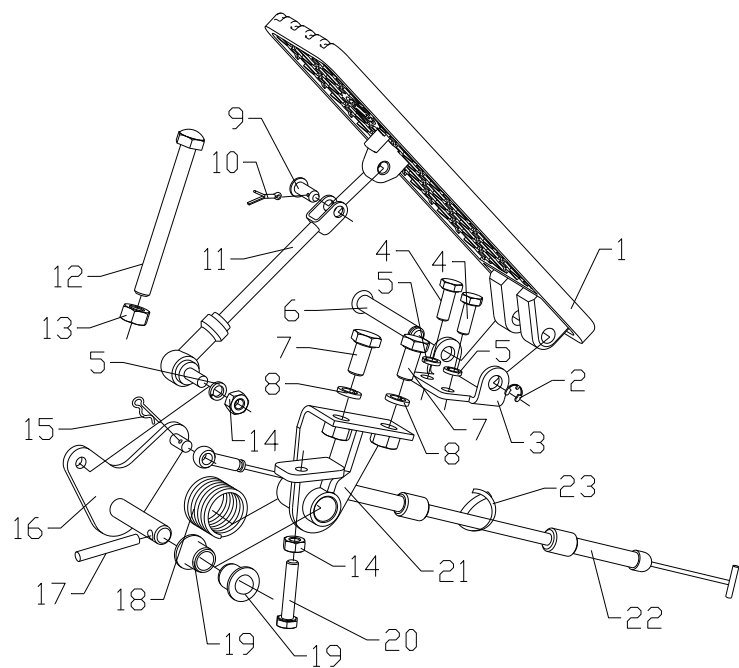


图 8 油门操纵总成
Fig.8 Throttle control assy

Ⓒ1 CPCD30/35/38-XRW55B

Ⓒ2 CPCD30/35/38-XRW55F

Ⓒ3 CPC30/35/38-XRW55



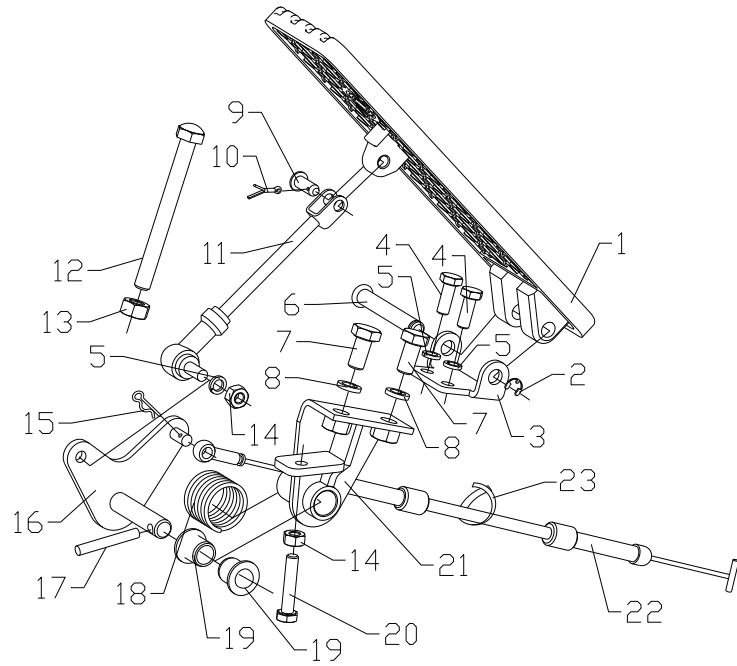
序号 Item	代号 Part No.	名称 Description	数量 Qty	备注或适用车型 Remarks or Serial No.	原物料码 Original Part No.
1	205200080017	油门踏板 Throttle pedal	1		XF250-520001-000
2	300060060004	挡圈 6 Snap ring 6	1		G000896-000006-00
3	205200020126	支架 Support	1		XR312-522000-000
4	300010040148	螺栓 M6×16 Bolt M6×16	2		G005783-006016-00
5	300030010014	垫圈 6 Washer 6	4		G000093-000006-00
6	205200200021	销轴 Shaft	1		XF250-520002-000
7	300010040169	螺栓 M8×16 Bolt M8×16	2		G005783-008016-00
8	300030010015	垫圈 8 Washer 8	4		G000093-000008-00
9	300050040027	销轴 B6×16 Pin shaft B6×16	1		G000882-006016-01
10	300050010015	销 2×12 Pin 2×12	1		G000091-002012-00
11	205200050009	连杆 Rod	1		XF250-521000-000
12	202200090002	限位螺栓 Thrust bolt	1		15PH-500001
13	300020010016	螺母 M8 Nut M8	1		G006170-000008-00
14	300020010005	螺母 M6 Nut M6	3		G006170-000006-00
15	205200070001	锁销 6 Pin 6	1		XF250-520006-G00

图8 油门操纵总成
Fig.8 Throttle control assy

Ⓒ1 CPCD30/35/38-XRW55B

Ⓒ2 CPCD30/35/38-XRW55F

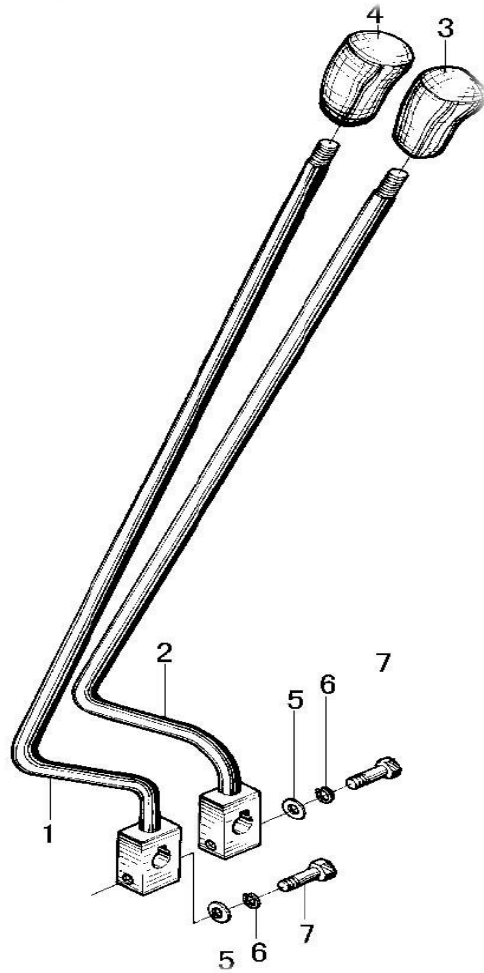
Ⓒ3 CPC30/35/38-XRW55



序号 Item	代号 Part No.	名称 Description	数量 Qty	备注或适用车型 Remarks or Serial No.	原物料码 Original Part No.
16	205200120010	摇臂 Rod arm	1		XF250-524000-000
17	300050090025	销 5×40 Pin 5×40	1		G000879-005040-00
18	205200060002	扭簧 Spring	1		XF250-520004-000
19	205200010002	衬套 Bushing	2		XF250-520003-000
20	300010040155	螺栓 M6×30 Bolt M6×30	1		G005783-006030-00
21	205200020020	支架 Support	1		XF250-522000-000
22	205200140160	油门拉线 Throttle line	1		XF2519-511000-000

图9 换档操纵总成
Fig. 9 Change over control assy

Ⓐ CPC30/35/38-XRG71 Ⓑ CPC30/35/38-XRG72 Ⓒ CPC30/35/38-XRG72J Ⓓ CPC30-XRW10
Ⓔ CPC30/35/38-XRW55



序号 Item	代号 Part No.	名称 Description	数量 Qty	备注或适用车型 Remarks or Serial No.	原物料码 Original Part No.
A	205400000011	换档操纵总成 Change over control asly	1		N150-530000-000
1	205400030040	换向手柄 Lever, direction change	1		N150-530100-000
2	205400030034	换档手柄 Lever, speed change	1		N150-530200-000
3	205400030025	换档手把 Knob, speed change	1		N150-530002-000
4	205400030039	换向手把 Knob, direction change	1		N150-530001-000
5	300030100010	垫圈8 Washer 8	2		G000848-000008-00
6	300030010015	垫圈 8 Washer 8	2		G000093-000008-00
7	300010030182	螺栓 M8×35 Bolt M8×35	2		G005782-008035-00

图 10 手制动操纵
Fig.10 Hand brake control

全部车型
All models of truck

序号 Item	代号 Part No.	名称 Description	数量 Qty	备注或适用车型 Remarks or Serial No.	原物料码 Original Part No.
A	205500000091	手制动操纵总成 Hand brake control assy			XR310-530000-000
1	205500020007	驻车制动器 Device assy parking brake control	1	压钮 Button	NC9321-531000-000
2	300010040005	螺栓 M10×20 Bolt M10×20	2		G005783-010020-00
3	300030010001	垫圈 10 Washer 10	6		G000093-000010-00
4	310040010071	管夹 Clip	1		N163-540001-000
5	300010040169	螺栓 M8×16 Bolt M8×16	1		G005783-008016-00
6	300030010015	垫圈 8 Washer 8	1		G000093-000008-00
7	310040010072	管夹 Clip	4		N163-540002-000
8	300010040004	螺栓 M10×16 Bolt M10×16	4		G005783-010016-00

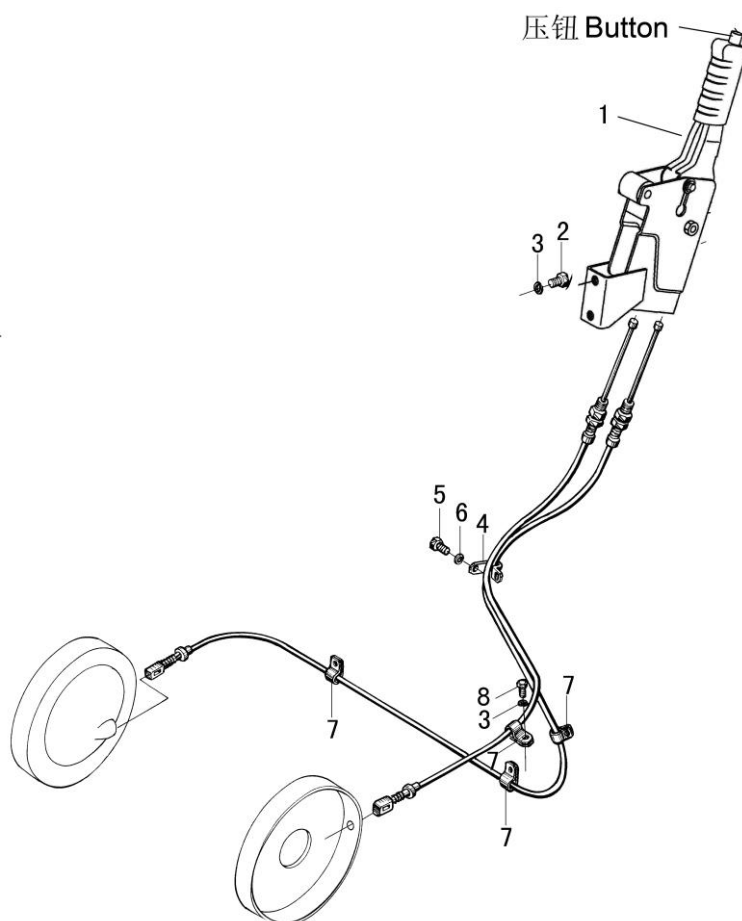


图 11 制动微动踏板总成
Fig.11 Brake and inching pedal assy

Ⓔ CPCD30/35/38-XRG72F
Ⓒ CPCD30/35/38-XRW55F
Ⓛ CPQD30/35/38-XRW22F
Ⓔ CPCD30/35/38-XRG72JF

Ⓒ CPCD30-XRW10F
Ⓛ CPCD30/35/38-XRW56F
Ⓛ CPQYD30/35/38-XRW22F
Ⓔ CPCD30/35/38-XRW43F

Ⓒ CPCD30/35/38-XRW33F
Ⓒ CPCD30/35/38-XRW92F
Ⓛ CPYD30/35/38-XRW52F

序号 Item	代号 Part No.	名称 Description	数量 Qty	备注或适用车型 Remarks or Serial No.	原物料码 Original Part No.
A	205100000396	制动微动踏板总成 inch pedal assy	1	包含/INC: 1-32	XRF310-510000-000
1	205100180001	踏板垫 Pedal pad	2		N163-512001-000
2	205100260131	制动踏板 Brake pedal	1		XRF310-513100-000
3	300170040003	油杯M6 Oil grease	1		G001152-006000-00
4	300010040011	螺栓M10×30 BoltM10×30	1		G005783-010030-00
5	300020010006	螺母 M10 Nut M10	2		G006170-000010-00
6	300060030013	挡圈 28 Snap ring	1		G0894P1-000028-00
7	205100090013	垫片 Shim	1		N163-510004-000
8	205100320007	套 Bushing	2		N163-514001-000
9	300030040014	垫圈 8 Washer 8	1		G0097P1-000008-00
10	205100050013	弹簧 Spring	2		N163-510003-000
11	205100260130	微动踏板 Inching pedal	1		XRF310-512100-000
12	205100320009	套 Bushing	2		N163-512003-000
13	205100090012	垫片 Shim	1		N163-510001-000
14	205100080042	底座 Seat	1		XRF310-511000-000

图 11 制动微动踏板总成
Fig.11 Brake and inching pedal assy

Ⓔ CPCD30/35/38-XRG72F
Ⓕ CPCD30/35/38-XRW55F
Ⓖ CPQD30/35/38-XRW22F
Ⓖ CPCD30/35/38-XRG72JF

Ⓒ CPCD30-XRW10F
Ⓕ CPCD30/35/38-XRW56F
Ⓖ CPQYD30/35/38-XRW22F
Ⓔ CPCD30/35/38-XRW43F

Ⓖ CPCD30/35/38-XRW33F
Ⓖ CPCD30/35/38-XRW92F
Ⓖ CPYD30/35/38-XRW52F

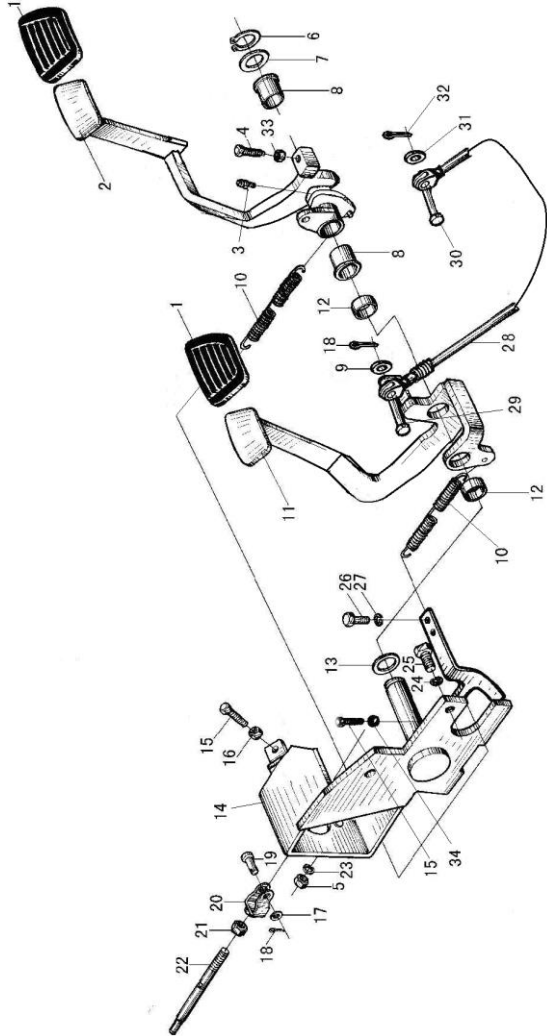
序号 Item	代号 Part No.	名称 Description	数量 Qty	备注或适用车型 Remarks or Serial No.	原物料码 Original Part No.
15	300010040178	螺栓M8×30 Bolt M8×30	2		G005783-008030-00
16	300020010016	螺母M8 Nut M8	1		G006170-000008-00
A2	205100230006	推杆总成 Thrust rod assy	1		N163-513000-000
17	300030100010	垫圈 8 Washer 8	1		G000848-000008-00
18	205100160010	锁销 1.6B The locking pin 1.6B	3		N163-513002-000
19	300050040015	销轴 B8×24 Pin shaft B8×24	1		G000882-008024-00
20	205100210011	推耳 Push bracket	1		N163-513100-000
21	300020010006	螺母M10 Nut 10	1		G006170-000010-00
22	205100220012	推杆 Thrust rod	1		N163-513001-000
23	300030010001	垫圈 10 Washer	2		G000093-000010-00
24	300030010002	垫圈 12 Washer	2		G000093-000012-00
25	300010060024	螺栓 M12×1.25×25 Bolt M12×1.25×25	2		G005786-012025-00
26	300010040145	螺栓 M6×12 Bolt M6×12	2		G005783-006012-00
27	300030010014	垫圈 6 Washer 6	2		G000093-000006-00
28	205100100078	微动拉线总成 Inching shaft	1		XRF310-514000-000

图 11 制动微动踏板总成
Fig.11 Brake and inching pedal assy

ⓐ2 CPCD30/35/38-XRG72F
ⓐ2 CPCD30/35/38-XRW55F
ⓐ2 CPQD30/35/38-XRW22F
ⓐ6 CPCD30/35/38-XRG72JF

ⓐ2 CPCD30-XRW10F
ⓐ2 CPCD30/35/38-XRW56F
ⓐ2 CPQYD30/35/38-XRW22F
ⓐ2 CPCD30/35/38-XRW43F

ⓐ2 CPCD30/35/38-XRW33F
ⓐ2 CPCD30/35/38-XRW92F
ⓐ2 CPYD30/35/38-XRW52F



序号 Item	代号 Part No.	名称 Description	数量 Qty	备注或适用车型 Remarks or Serial No.	原物料码 Original Part No.
29	300050040036	销轴 B8×18 Pin B8×18	1		G000882-008018-01
30	300050040065	销轴 B5×16 Pin B5×16	1		G000882-005016-01
31	300030040012	垫圈 5 Washer 5	1		G0097P1-000005-00
32	300050010015	销2×12 Pin 2×12	1		G000091-002012-00
33	300020300002	螺母M10 Nut M10	1		G006172-000010-00
34	300020300006	螺母 M8 Nut M8	1		G006172-000008-00
		制动总泵总成 Brake pump assy	1	见图 11 序号 1 See Fig.11 Item 1	

图 12 制动总泵总成
Fig.12 Brake pump assy

ⓐ2 CPCD30/35/38-XRG72F
ⓐ2 CPCD30/35/38-XRW55F
ⓐ2 CPQD30/35/38-XRW22F
ⓐ6 CPCD30/35/38-XRG72JF

ⓐ2 CPCD30-XRW10F
ⓐ2 CPCD30/35/38-XRW56F
ⓐ2 CPQYD30/35/38-XRW22F
ⓐ2 CPCD30/35/38-XRW43F

ⓐ2 CPCD30/35/38-XRW33F
ⓐ2 CPCD30/35/38-XRW92F
ⓐ2 CPYD30/35/38-XRW52F

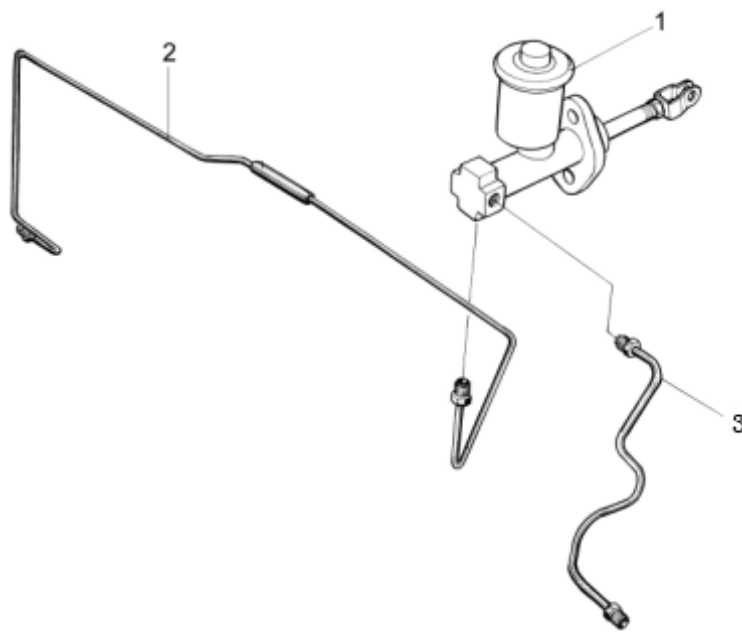
	序号 Item	代号 Part No.	名称 Description	数量 Qty	备注或适用车型 Remarks or Serial No.	原物料码 Original Part No.
	1	205100310015	制动总泵总成 Brake pump assy	1		N160-518000-000
	A1	206300200154	制动油管总成 brake pipe assy	1	包含/INC:2-3	XRF310-550000-000
	2	206300230344	右制动油管 Right brake pipe	1		XRF310-550200-000
	3	206300230343	左制动油管 Left brake pipe	1		XRF310-550100-000

图 13 微动推杆支架
Fig. 13 Inching Budge push-rod stents

Ⓒ1 CPCD30-XRW10B

Ⓓ1 CPCD30/35/38-XRW33B

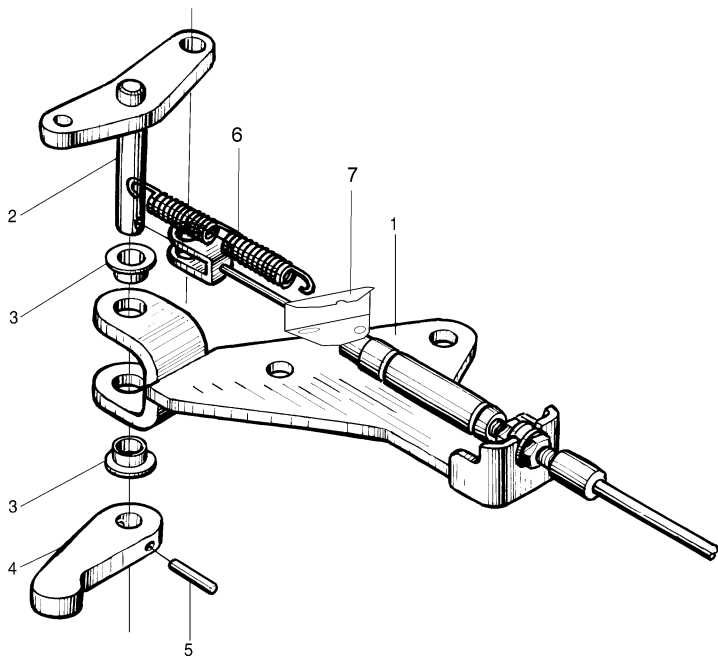
Ⓔ1 CPCD30/35/38-XRW55B

Ⓕ1 CPCD30/35/38-XRW56B

Ⓖ1 CPQD30/35/38-XRW22B

Ⓙ1 CPQYD30/35/38-XRW22B

Ⓖ1 CPCD30/35/38-XRW43B



序号 Item	物料码 Part No.	名称 Description	数量 Qty	备注或适用车型 Remarks or Serial No.	原物料码 Original Part No.
A	205100020038	微动推杆支架 Inching Budge push-rod stents	1	INC:1-5	R561-513000-000
1	205100020034	固定支架 Fixed bracket	1		R561-513100-000
2	205100350187	上板 Upper plate	1		R561-513200-000
3	205100040050	复合衬套 0806 Composite bushing	1		R561-513002-G00
4	205100350192	下板 Plate	1		R561-513001-000
5	300050090013	销3x20 Pin 3x20	1		GT879P1-003020-00
6	205100050013	弹簧 Spring	1		N163-510003-000
7	205100070012	微动弹簧支撑板 Support plate	1		R561-510001-000

图 14 油门操纵总成
Fig.14 Throttle control assy

Ⓢ CPCD30/35/38-XRW73

序号 Item	物料码 Part No.	名称 Description	数量 Qty	备注或适用车型 Remarks or Serial No.	原物料码 Original Part No.
1	202200090002	限位螺栓 Thrust bolt	1		15PH-500001
2	300020010016	螺母 M8 Nut M8	1		G006170-000008-00
3	205200080017	油门踏板 Throttle pedal	1		XF250-520001-000
4	300050040027	销轴 B6×16 Pin shaft B6×16	1		G000882-006016-01
5	300050010015	销 2×12 Pin 2×12	1		G000091-002012-00
6	205200050009	连杆 Rod	1		XF250-521000-000
7	300030010014	垫圈 6 Washer 6	3		G000093-000006-00
8	300020010005	螺母 M6 Nut M6	3		G006170-000006-00
9	300030010015	垫圈 8 Washer 8	2		G000093-000008-00
10	300010040169	螺栓 M8×16 Bolt M8×16	2		G005783-008016-00
11	205200020126	支架 Support	1		XR312-522000-000
12	300010040148	螺栓 M6×16 Bolt M6×16	2		G005783-006016-00
13	300060060004	挡圈 6 Snap ring 6	1		G000896-000006-00
14	205200200021	销轴 Shaft	1		XF250-520002-000
15	205200180014	支架 Support	1		XF250-520005-000

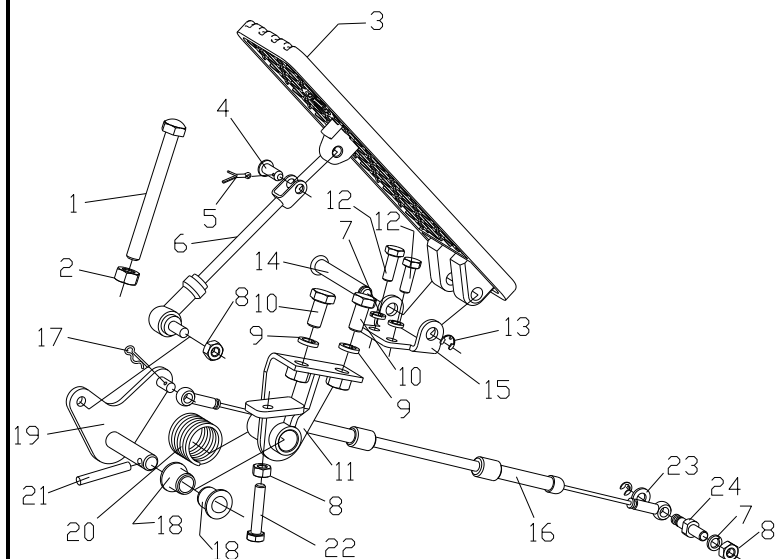
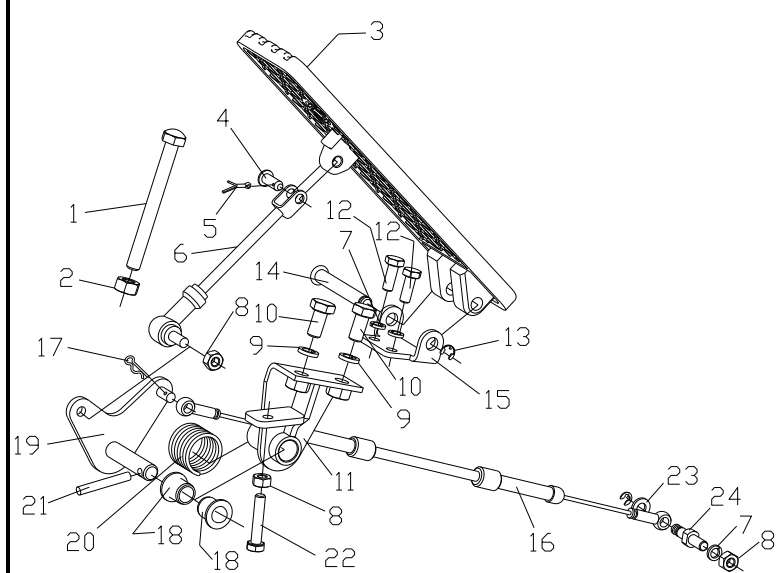


图 14 油门操纵总成
Fig.14 Throttle control assy

Ⓣ CPCD30/35/38-XRW73

	序号 Item	物料码 Part No.	名称 Description	数量 Qty	备注或适用车型 Remarks or Serial No.	原物料码 Original Part No.	
	16	205200140103	油门拉线 Throttle line	1	<2018.05.14	XF3012-521000-000	
	16	205200140037	油门拉线 Throttle line	1	≥2018.05.14	XF155-521000-000	
	17	205200070001	锁销 6 Pin 6	1		XF250-520006-G00	
	18	205200010002	衬套 Bushing	2		XF250-520003-000	
	19	205200120010	摇臂 Rod arm	1		XF250-524000-000	
	20	205200060002	扭簧 Spring	1		XF250-520004-000	
	21	300050090025	销 5×40 Pin 5×40	1		G000879-005040-00	
	22	300010040155	螺栓 M6×30 Bolt M6×30	1		G005783-006030-00	
	23	300030040013	垫圈 6 Washer 6	1		G0097P1-000006-00	
	24	205200040009	拉线挂销 Pin	1		N121-510001-000	

