

第一部分 传动系统目录
Part I Driving system contents

Ⓐ CPCD10/15/18-XW32F Ⓑ CPCD10/15/18-XW32B Ⓒ CPCD10/15/18-XW32M Ⓓ CPYD15/18-XW21F Ⓔ CPYD15/18-XW51F
 Ⓔ CPYD15/18-XW21B Ⓕ CPYD15/18-XW51B Ⓖ CPYD15/18-XW21M Ⓖ CPYD15/18-XW51M Ⓖ CPCD10/15/18-XW12F
 Ⓗ CPCD10/15/18-XW10F ⓘ CPQD10/15/18-XW21F

| 序号 Item | 名称 Description | 适用车型 Serial No. | 页码 Page |
|----------------|--------------------------------------|--|------------|
| 图 1 Fig.1 | 传动系统 Driving system | Ⓑ Ⓔ ⓘ | 1-1 |
| 图 2 Fig.2 | 驱动桥总成 Drive axle assy | Ⓑ Ⓔ ⓘ | 1-3 |
| 图 3 Fig.3 | 前轮 (单轮) Front wheel (Single tyre) | 1.5t-1.8t 全部车型 All models of truck | 1-7 |
| 图 4 Fig.4 | 前轮 (双轮) Front wheel (Double tyre) | 1.0t-1.8t 全部车型/All models of truck 冈村, 国产变速箱 / Okamura, Chinese gearbox | 1-8 |
| 图 5 Fig.5 | 冷却油管总成 Cooling oil pipe assy | Ⓑ Ⓔ ⓘ | 1-10 |
| 图 6 Fig.6 | 制动器 Wheel brake | Ⓑ Ⓔ ⓘ | 1-11 |
| 图 7 Fig.7 | 液力变矩器总成 Torque converter assy | Ⓑ Ⓔ ⓘ | 1-14 |
| 图 8 Fig.8 | 变速箱 (其 1) Transmission (Part-1) | 1.0-3.5t | 1-15 |
| 图 9 Fig.9 | 变速箱 (其 2) Transmission (Part-2) | Y43160X 液力传动变速箱 (冈村) Y43160X Hydrodynamic Transmission Gearbox | 1-19 |
| 图 10 Fig.10 | 变速箱 (其 3) Transmission (Part-3) | (Okamura) | 1-21 |

| 序号 Item | 名称 Description | 适用车型 Serial No. | 页码 Page |
|----------------|--|--|------------|
| 图 11 Fig.11 | 控制阀 Control valve | 1.0-3.5t Y43160X 液力传动变速箱 (冈村) Hydrodynamic Transmission Gearbox (Okamura) | 1-23 |
| 图 12 Fig.12 | 1.0-1.8t 主减速器·差速器总成 1.0-1.8t Reduction & Differential | 1.0-1.8t Y43160X 液力传动变速箱 (冈村) Hydrodynamic Transmission Gearbox (Okamura) | 1-26 |
| 图 13 Fig.13 | 传动系统 Driving system | Ⓐ Ⓓ Ⓓ ₁ Ⓔ Ⓕ Ⓖ | 1-30 |
| 图 14 Fig.14 | 驱动桥总成 Drive axle assy | Ⓐ Ⓓ Ⓓ ₁ Ⓔ Ⓕ Ⓖ | 1-32 |
| 图 15 Fig.15 | 冷却油管总成 Cooling oil pipe assy | Ⓐ Ⓓ Ⓓ ₁ Ⓔ Ⓕ Ⓖ | 1-35 |
| 图 16 Fig.16 | 制动器 Wheel brake | Ⓐ Ⓓ Ⓓ ₁ Ⓔ Ⓕ Ⓖ | 1-37 |
| 图 17 Fig.17 | 变速箱 (其 1) Transmission (Part-1) | Ⓐ Ⓓ Ⓓ ₁ Ⓔ Ⓕ Ⓖ 1.0-3.5t YQXF 系列液力传动变速箱 (绍兴) YQXF Series Hydrodynamic Transmission Gearbox (SHAOXIN) | 1-40 |
| 图 18 Fig.18 | 变速箱 (其 2) Transmission (Part-2) | | 1-43 |
| 图 19 Fig.19 | 变速箱 (其 3) Transmission (Part-3) | | 1-45 |
| 图 20 Fig.20 | 电磁控制操纵阀 Electro-hydraulic operating valve | | 1-48 |
| 图 21 Fig.21 | 减速器总成 Reduction assy | | 1-50 |
| | 驱动桥密封 (修理) 工具包 Drive axle repair kits | Ⓐ Ⓑ Ⓓ Ⓓ ₁ Ⓔ Ⓕ Ⓖ | 1-54 |
| | 变速箱密封 (修理) 工具包 Transmission repair kits | 1.0-3.5t YQXF 液力传动变速箱 (绍兴) Hydrodynamic Transmission Gearbox (SHAOXIN) | 1-55 |
| 图 22 Fig.22 | 传动系统 Driving system | Ⓒ Ⓕ Ⓖ ₁ | 1-56 |
| 图 23 Fig.23 | 冷却油管总成 Cooling oil pipe assy | Ⓒ Ⓕ Ⓖ ₁ | 1-59 |

图 1 传动系统
Fig.1 Driving system

ⓑ CPCD10/15/18-XW32B ⓓ CPYD15/18-XW21B ⓔ CPYD15/18-XW51B

| 序号 Item | 物料码 Part No. | 名称 Description | 数量 Qty | 备注或适用车型 Remarks Or Serial No. |
|------------|-----------------------------------|------------------------------------|-----------|---------------------------------------|
| 1 | XB150-110000-000 | 驱动桥总成 Drive axle assy | 1 | 见图2 See Fig.2 单轮, Single tyre |
| 1 | XB150-110000-500 | 驱动桥总成 Drive axle assy | 1 | 见图2 See Fig.2 双轮, Double tyre |
| 2 | Y43160X-000-G00 | 液力变速箱 Transmission | 1 | INC: Fig.7-11, Except Fig.8 Item 3 |
| 3 | G000093-000008-00 | 垫圈 8 Washer 8 | 12 | |
| 4 | G005783-008020-00 | 螺栓 M8×20 Bolt M8×20 | 12 | |
| 5 | XB150-100001-000 | 纸垫 Gasket | 1 | |
| 6 | G000093-000012-00 | 垫圈 12 Washer 12 | 16 | |
| 7 | G005786-012030-01 | 螺栓 M12×1.5×30 Bolt M12×1.5×30 | 10 | |
| 8 | G005786-010035-00 | 螺栓 M10×1.25×35 Bolt M10×1.25×35 | 11 | ⓑ |
| 8 | G005786-010035-01 | 螺栓 M10×35 Bolt M10×35 | 10 | ⓓ <2011-12-01 |
| 8 | G005783-010035-01 | 螺栓 M10×35 Bolt M10×35 | 2 | ⓔ ≥2011-12-01 |
| 8-1 | G005783-010045-01 | 螺栓 M10×45 Bolt M10×45 | 6 | ⓔ ≥2011-12-01 |
| 9 | Y48130Z-000-G00 | 主传动箱 Host drive housing | 1 | 见图12 See Fig.12 |
| 10 | G000093-000010-00 | 垫圈 10 Washer 10 | 16 | |
| 11 | G005785-010050-04 | 螺栓 M10×1.25×50 Bolt M10×1.25×50 | 8 | |

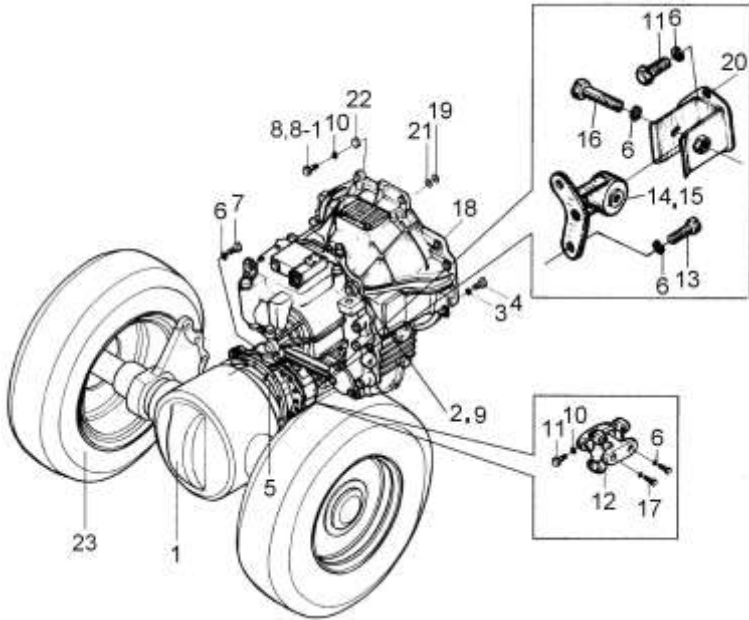


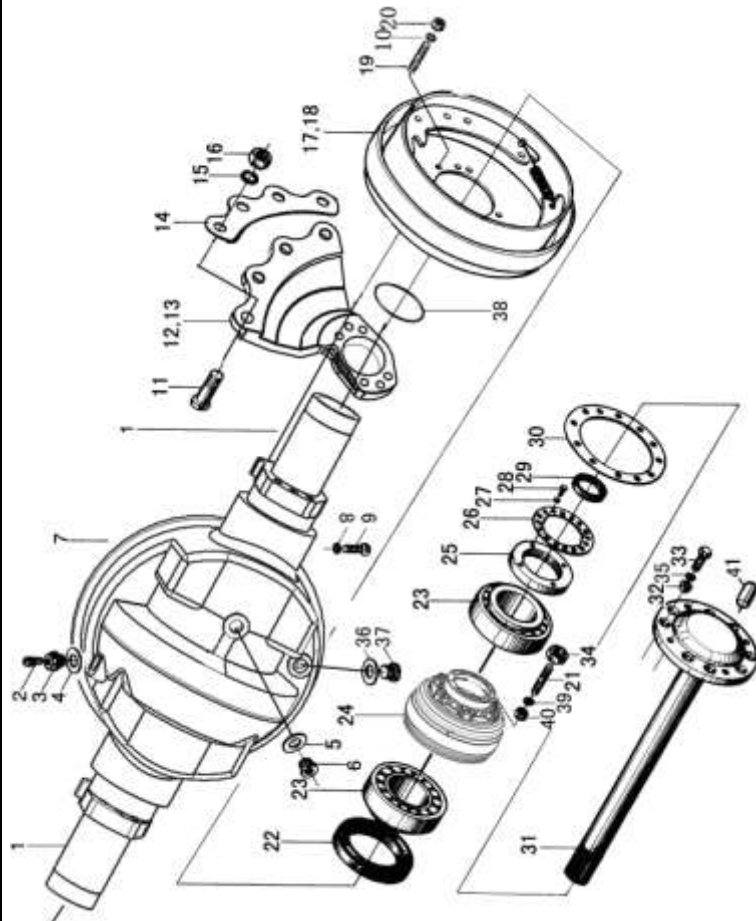
图1 传动系统
Fig.1 Driving system

ⓑ CPCD10/15/18-XW32B ⓓ CPYD15/18-XW21B ⓔ CPYD15/18-XW51B

| 序号 Item | 物料码 Part No. | 名称 Description | 数量 Qty | 备注或适用车型 Remarks Or Serial No. |
|------------|-------------------|--|-----------|----------------------------------|
| 12 | R561-130000-000 | 翼形联轴器总成 Cardan assy | 1 | 见图8 序号3 See Fig.8 Item3 |
| 13 | G005785-012040-00 | 螺栓 M12×1.25×40 Bolt M12×1.25×40 | 6 | |
| 14 | K91331-30031-G00 | 左减震垫 Left shock pad | 1 | |
| 15 | K91331-30041-G00 | 右减震垫 Right shock pad | 1 | |
| 16 | G005785-012085-00 | 螺栓 M12×1.25×85 Bolt M12×1.25×85 | 2 | |
| 17 | G005786-012025-00 | 螺栓 M12×1.25×25 Bolt M12×1.25×25 | 4 | |
| 18 | R564-100001-000 | 垫片 Shim | 1 | ⓔ <2011-12-01 |
| 19 | R564-100002-000 | 垫片 Shim | 1 | ⓔ <2011-12-01 |
| 20 | R561-101000-000 | 支架 Bracket | 2 | |
| 21 | G006171-000010-01 | 螺母 M10×1.25 Nut M10×1.25 | 1 | ⓑ |
| 22 | G006170-000010-00 | 螺母 M10 Nut M10 | 2 | ⓔ |
| 23 | | 前轮总成(单轮) front wheel assy | 2 | 见图3 See Fig.3 |
| 23 | | 内前轮总成(双轮)Inner front wheel assy(double) | 2 | 见图4 See Fig.4 |
| 23 | | 外前轮总成(双轮)Outer front wheel assy(double) | 2 | 见图4 See Fig.4 |

图2 驱动桥
Fig.2 Drive axle

ⓑ CPCD10/15/18-XW32B ⓔ CPYD15/18-XW21B ⓔ CPYD15/18-XW51B



| 序号 Item | 物料码 Part No. | 名称 Description | 数量 Qty | 备注或适用车型 Remarks Or Serial No. |
|------------|-----------------------------------|----------------------------|-----------|---|
| A1 | XB150-113000-000 | 桥体 Axle | 1 | INC:1,7,8,9 |
| 1 | XB150-113002-000 | 套管 Plug | 2 | 不单独提供 Do not supply separately |
| 2 | Q903-Z1/8-G00 | 通气塞 Z 1/8 Vented plug | 1 | <2013-05-24 |
| 3 | N163-110017-000 | 螺塞 Plug | 1 | |
| 2 | XB450-115000-000 | 呼吸器 Vented plug | 1 | 前期用户, Early users 可两件一起更换 Can replacement two together ≥2013-05-24 |
| 3 | RC250-110004-000 | 内六角螺塞 Plug | 1 | |
| 4 | J000982-000022-00 | 垫圈 22 Washer 22 | 1 | |
| 5 | J000982-000016-00 | 垫圈 16 Washer 16 | 1 | |
| 6 | J001000-0161P5-00 | 螺塞 M16×1.5 Plug M16×1.5 | 1 | |
| 7 | XB150-113001-000 | 桥壳 Axle housing | 1 | 不单独提供 Do not supply separately |
| 8 | G007244-000010-00 | 垫圈 10 Washer 10 | 2 | |
| 9 | G005783-010040-01 | 螺栓 M10×40 Bolt M10×40 | 2 | |
| 10 | G000093-000012-00 | 垫圈 12 Washer 12 | 16 | |
| 11 | XF250-110003-000 | 连接螺栓 Bolt | 8 | |
| 12 | XF150-110001-000 | 左支撑板 Plate | 1 | |

图2 驱动桥
Fig.2 Drive axle

ⓑ CPCD10/15/18-XW32B ⓓ CPYD15/18-XW21B ⓔ CPYD15/18-XW51B

| 序号 Item | 物料码 Part No. | 名称 Description | 数量 Qty | 备注或适用车型 Remarks Or Serial No. |
|------------|----------------------|--|-----------|----------------------------------|
| 13 | XF150-110006-000 | 右支撑板 Plate | 1 | |
| 14 | XF250-110002-000 | 垫板 Plate | 1 | |
| 15 | G000093-000020-00 | 垫圈 20 Washer 20 | 20 | |
| 16 | G006171-000020-02 | 螺母 M20×1.5 Nut M20×1.5 | 20 | |
| 17 | XB150-111000-000 | 左制动器 Left brake | 1 | |
| 18 | XB150-112000-000 | 右制动器 Right brake | 1 | |
| 19 | XF150-110003-000 | 螺栓 Bolt | 16 | ≤2011-10 螺柱 Stud |
| 20 | G006171-000012-02 | 螺母 M12×1.5 Nut M12×1.5 | 16 | ≤2011-10 |
| 21 | N030-110013-000 | 轮毂螺栓 Bolt, Hub | 12 | 单轮 Single tyre |
| 21 | R840-110001-500 | 轮毂螺栓 Bolt, Hub | 12 | 双轮 Double tyre |
| 22 | HG40692-075010512-01 | 油封 SD75×105×12 Oil seal SD75×105×12 | 2 | |
| 23 | GT00276-0033112-00 | 轴承 33112 Bearing 33112 | 4 | |
| 24 | XF150-110004-000 | 轮毂 Hub | 2 | |
| 25 | N030-110010-000 | 锁紧螺母 Lock nut | 2 | |
| 26 | N030-110011-000 | 锁紧片 Locking shim | 2 | |

图2 驱动桥
Fig.2 Drive axle

ⓑ CPCD10/15/18-XW32B ⓓ CPYD15/18-XW21B ⓔ CPYD15/18-XW51B

| 序号 Item | 物料码 Part No. | 名称 Description | 数量 Qty | 备注或适用车型 Remarks Or Serial No. |
|------------|---------------------|---------------------------|-----------|----------------------------------|
| 27 | G000093-000006-00 | 垫圈 6 Washer 6 | 4 | |
| 28 | G005783-006012-01 | 螺栓 M6×12 Bolt M6×12 | 4 | |
| 29 | N030-110015-000 | 油封 SD42×52×10 Oil seal | 2 | |
| 30 | N030-110009-000 | 纸垫 Gasket | 2 | |
| 31 | XB150-110005-000 | 半轴 Half shaft | 2 | |
| 32 | N030-110016-000 | 压紧衬套 Clamp split-ring | 16 | <2010-02 |
| 32 | N030-110016-000 | 压紧衬套 Clamp split-ring | 18 | ≥2010-02 |
| 33 | N030-110008-000 | 螺栓 Nut | 16 | <2010-02 |
| 33 | N030-110008-000 | 螺栓 Nut | 18 | ≥2010-02 |
| 34 | N163-220010-000 | 球形螺母 Nut | 12 | |
| 35 | G007244-000010-00 | 垫圈 10 Washer | 16 | |
| 36 | N163-110016-000 | 螺塞 Plug | 1 | |
| 37 | J000982-000020-00 | 垫圈 20 Washer | 1 | |
| 38 | G001235-007503P1-00 | O形密封圈 75×3.1 O-ring | 2 | |
| 39 | G000093-000016-00 | 垫圈 16 Washer | 12 | |

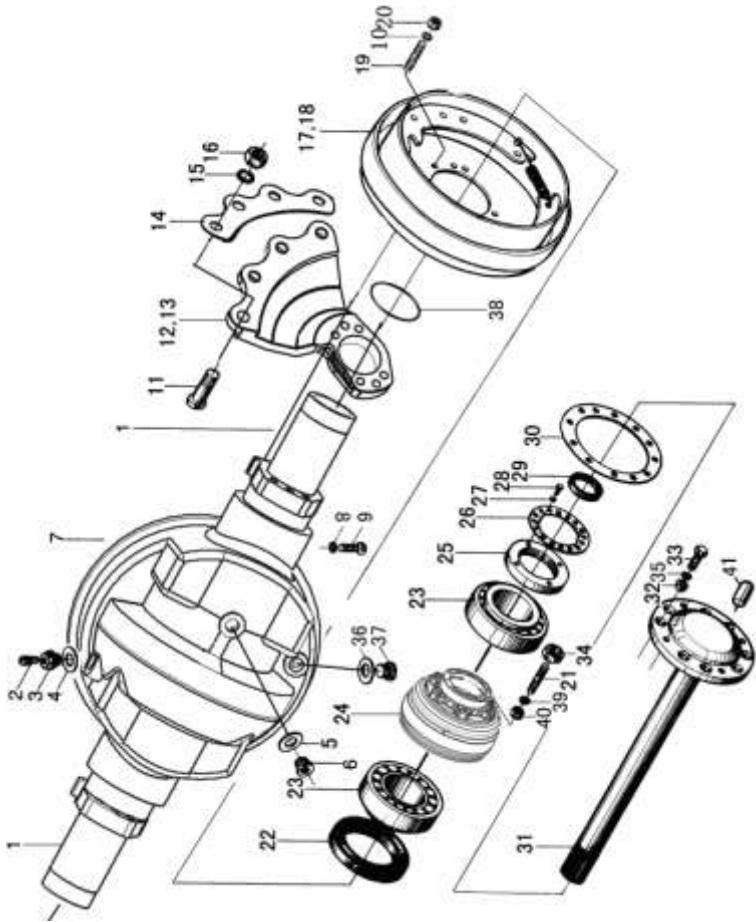


图3 前轮 (单轮)
Fig. 3 Front wheel (Single tyre)

全部车型 1.5t-1.8t
All models of truck

| 序号 Item | 物料码 Part NO. | 名称 Description | 数量 Qty | 备注或适用车型 Remarks Or Serial No. |
|------------|----------------------|--|-----------|--|
| A1 | MB300-221000-000 | 前轮总成(单轮) Front wheel assy | 2 | INC:1-7 实心轮胎 Solid Tyre |
| A1 | N163-221000-000 | 前轮总成(单轮) Front wheel assy | 2 | INC.1-7 充气轮胎 Inflated tyre |
| 1 | GT10823-006P510-00 | 实心轮胎 6.50-10 Solid tyre 6.50-10 | 2 | 实心轮胎 Solid Tyre |
| 1 | GT02982-006P51010-00 | 充气轮胎 6.50-10-10PR Inflated tyre | 2 | 充气轮胎 Inflated tyre |
| 2 | N163-221002-000 | 内轮辋 Inside wheel rim | 2 | 红色 Red 序号 2、3 配对购买 Item 2,3, Paired provide |
| 3 | N163-221001-000 | 外轮辋 Outside wheel rim | 2 | |
| 4 | 3E-211003-000 | 螺栓 Bolt | 12 | N163-221005-000 |
| 5 | G000093-000012-00 | 垫圈 12 Washer 12 | 12 | |
| 6 | G009457-000012-01 | 螺母 M12×1.5 Nut M12×1.5 | 12 | |
| 7 | G000091-3P2022-00 | 销 3.2×22 Pin 3.2×22 | 12 | |
| 8 | N163-220010-000 | 球形螺母 Nut | 12 | |
| 9 | GT10823-006P510-02 | 无痕轮胎 6.50-10 Non-trace tyre 6.50-10 | 2 | 选配 Optional 实心轮胎 Solid Tyre |
| 10 | N030-110013-000 | 轮毂螺栓 Bolt, Hub | 12 | 单轮 Single tyre |
| | | | | |
| | | | | |

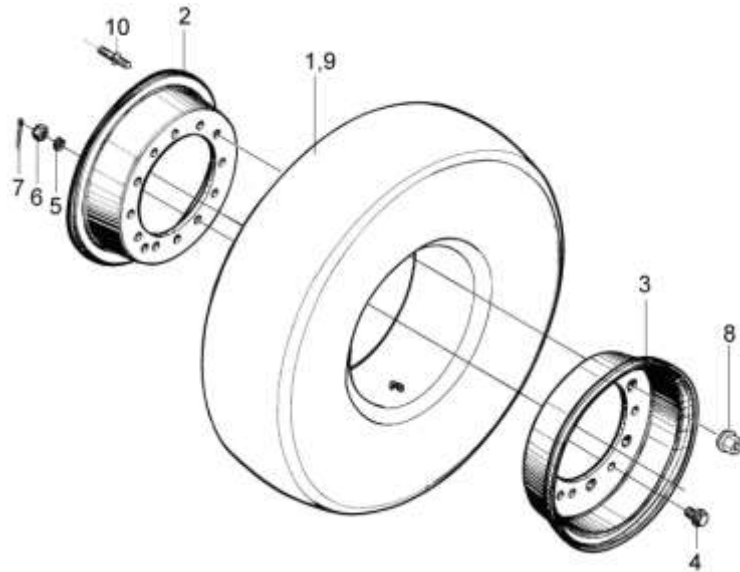


图4 前轮(双轮)
Fig. 4 Front wheel (Double tyre)

1.0t-1.8t 全部车型/All models of truck
冈村变速箱, 国产变速箱 / Okamura gearbox, Chinese gearbox

| 序号 Item | 物料码 Part No. | 名称 Description | 数量 Qty | 备注或适用车型 Remarks Or Serial No. |
|------------|----------------------|--|-----------|---------------------------------------|
| A1 | MB150-111000-500 | 内前轮总成(双轮) Inner front wheel assy(double) | 2 | INC:1,3-8 实心轮胎 Solid Tyre |
| A2 | MB150-112000-500 | 外前轮总成(双轮) Out front wheel assy(double) | 2 | INC:1,2 实心轮胎 Solid Tyre |
| A1 | R840-111000-500 | 内前轮总成(双轮) Inner front wheel assy(double) | 2 | INC:1,3-8 充气轮胎 Inflated tyre |
| A2 | R840-112000-500 | 外前轮总成(双轮) Outer front wheel assy(double) | 2 | INC:1,2 充气轮胎 Inflated tyre |
| 1 | GT10823-006P510-00 | 轮胎 6.50-10 Tyre 6.50-10 | 4 | 实心轮胎 Solid Tyre |
| 1 | GT02982-006P51010-00 | 轮胎 6.50-10-10PR Tyre 6.50-10-10PR | 4 | 充气轮胎 Inflated tyre |
| 2 | R840-112100-500 | 轮辋总成 Wheel rim | 2 | 红色 Red |
| 3 | N163-221001-000 | 外轮辋 Wheel rim,Outer | 2 | 序号 3、4 一起提供 NO.3、4, Paired provide |
| 4 | R840-111001-500 | 内轮辋 Wheel rim,Inner | 2 | |
| 5 | 3E-211003-000 | 螺栓 Bolt | 12 | |
| 6 | G000093-000012-00 | 垫圈 12 Washer 12 | 12 | |
| 7 | G009457-000012-01 | 螺母 M12×1.5 Nut M12×1.5 | 12 | |
| 8 | G000091-3P2022-00 | 销 3.2×22 Pin 3.2×22 | 12 | |
| 9 | XF150-460001-500 | 左挡泥板 Left fender | 1 | |
| 9 | XF150-460002-500 | 右挡泥板 Right fender | 1 | |

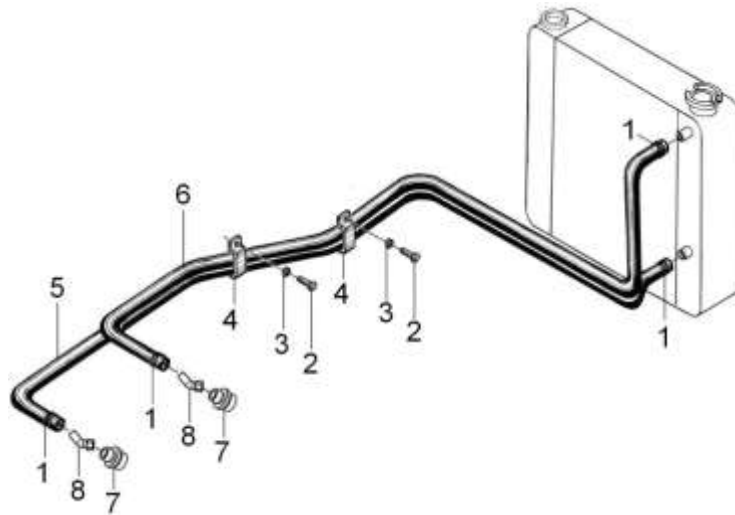
图4 前轮（双轮）
Fig. 4 Front wheel (Double tyre)

1.0t-1.8t 全部车型/All models of truck
冈村变速箱, 国产变速箱 / Okamura gearbox, Chinese gearbox

| 序号 Item | 物料码 Part No. | 名称 Description | 数量 Qty | 备注或适用车型 Remarks Or Serial No. |
|------------|-------------------|--------------------------|-----------|----------------------------------|
| 10 | G005783-012045-00 | 螺栓 M12×45 Bolt M12×45 | 4 | |
| 11 | G000093-000012-00 | 垫圈 12 Washer 12 | 6 | |
| 12 | G006170-000012-00 | 螺母 M12 Nut M12 | 4 | |
| 13 | 50CDA-210001 | 气门接长管 Extension tube | 2 | |
| 14 | N163-220010-000 | 球形螺母 Nut | 12 | |
| 15 | G0097P1-000012-00 | 垫圈 12 Washer 12 | 2 | |
| 16 | G005783-012025-00 | 螺栓 M12×25 Bolt M12×25 | 2 | |
| 17 | R840-110001-500 | 轮毂螺栓 Bolt, Hub | 12 | 双轮 Double tyre |
| | | | | |
| | | | | |
| | | | | |
| | | | | |
| | | | | |
| | | | | |
| | | | | |
| | | | | |
| | | | | |
| | | | | |

图5 冷却油管总成
Fig.5 Cooling oil pipe Assy

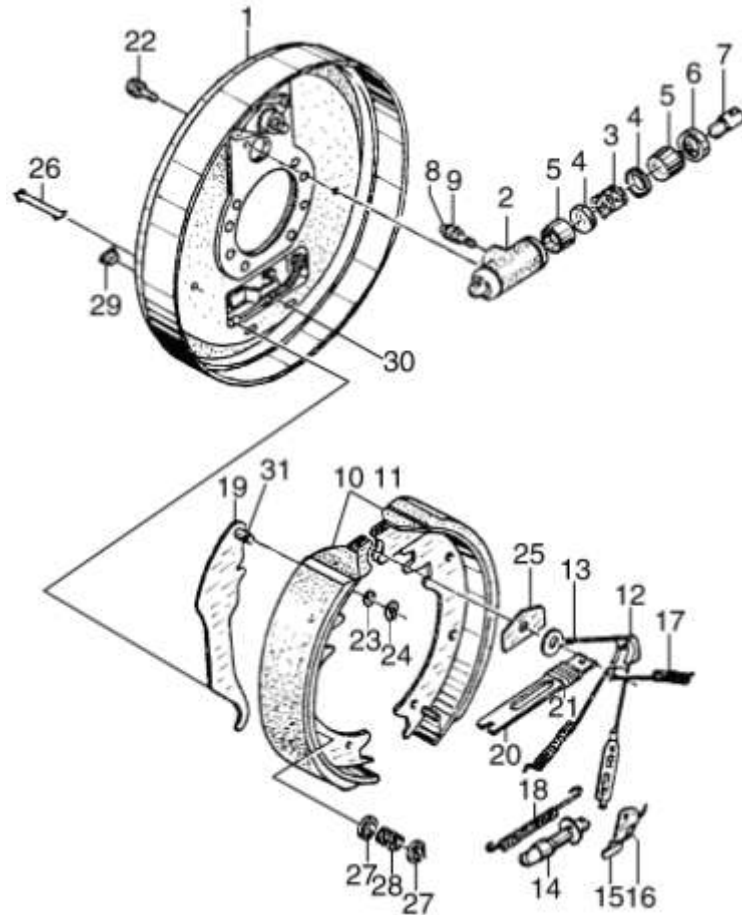
ⓑ CPCD10/15/18-XW32B ⓓ CPYD15/18-XW21B ⓔ CPYD15/18-XW51B



| 序号 Item | 物料码 Part No. | 名称 Description | 数量 Qty | 备注或适用车型 Remarks Or Serial No. |
|------------|-------------------|---------------------------------|-----------|----------------------------------|
| A1 | XB150-120000-000 | 冷却油管总成 Oil cooling pipe Assy | 1 | ⓑ |
| A2 | XB151-120000-000 | 冷却油管总成 Oil cooling pipe Assy | 1 | ⓓ |
| 1 | Q672-20-G00 | 双钢丝式环箍 20 Clamp | 4 | |
| 2 | G005783-008012-00 | 螺栓 M8×12 Bolt M8×12 | 4 | |
| 3 | G000093-000008-00 | 垫圈 8 Washer | 4 | |
| 4 | N160-120002-000 | 抱箍 Clamp | 4 | |
| 5 | XB150-120002-W00 | 胶管Φ13 Rubber pipe | 1 | ⓑ L=1740 |
| - | XB151-120002-W00 | 胶管Φ13 Rubber pipe | 1 | ⓓ L=2700 |
| 6 | XB150-120001-W00 | 胶管Φ13 Rubber pipe | 1 | ⓑ L=1840 |
| - | XB151-120001-W00 | 胶管Φ13 Rubber pipe | 1 | ⓓ L=2200 |
| 7 | N040-110001-000 | 铰接螺栓 link bolt | 2 | |
| 8 | N040-110100-000 | 回油管接头 Connector | 2 | |
| | | | | |
| | | | | |
| | | | | |

图6 制动器
Fig.6 Wheel brake

ⓑ CPCD10/15/18-XW32B ⓔ CPYD15/18-XW21B ⓔ CPYD15/18-XW51B



| 序号 Item | 代号 Part No. | 名称 Description | 数量 Qty | 备注或适用车型 Remarks or Serial No. |
|------------|------------------|---------------------------------|-----------|----------------------------------|
| A1 | XB150-111000-000 | 左制动器总成 Brake assy,LH | 1 | |
| A2 | XB150-112000-000 | 右制动器总成 Brake assy,RH | 1 | |
| 1 | 21233-70010G-L | 左制动器底板总成 Brake plate assy,LH | 2 | 左, Left |
| 1 | 21233-70010G-R | 右制动器底板总成 Brake plate assy,RH | 2 | 右, Right |
| A3 | 21233-70080G | 制动分泵总成 Cylinder assy | 2 | 包含/INC:2-9 |
| 2 | NO PART NO. | 制动分泵缸 Cylinder | 2 | |
| 3 | NO PART NO. | 分泵弹簧 Spring | 2 | |
| 4 | 21233-70110G | 分泵皮碗 Cup | 4 | |
| 5 | NO PART NO. | 分泵活塞 Piston | 4 | |
| 6 | 21233-70130G | 制动分泵护罩 Boots | 4 | |
| 7 | NO PART NO. | 分泵活塞顶杆 Link,Conneeding | 4 | |
| 8 | NO PART NO. | 分泵放气螺钉帽 Cap bleader | 2 | |
| 9 | NO PART NO. | 分泵放气螺钉 Screw,Bleader | 2 | |
| 10 | 21233-70150G | 制动蹄带摩擦片总成 Brake shoe | 2 | 左右相同 Left & right same |
| 11 | 21233-70150G | 制动蹄带摩擦片总成 Brake shoe | 2 | 左右相同 Left & right same |

图6 制动器
Fig.6 Wheel brake

Ⓑ CPCD10/15/18-XW32B Ⓔ CPYD15/18-XW21B Ⓔ CPYD15/18-XW51B

| 序号 Item | 代号 Part No. | 名称 Description | 数量 Qty | 备注或适用车型 Remarks or Serial No. |
|------------|----------------|-------------------------------|-----------|----------------------------------|
| 12 | 21233-70330G | 导向块 Guide,cable | 2 | |
| 13 | 21233-70260G | 弹簧拉线装置 Spring&fitting assy | 2 | |
| 14 | 21233-70210G-L | 间隙调整器总成 (左) Adjuster (L) | 2 | 左旋 Left threads |
| 14 | 21233-70210G-R | 间隙调整器总成 (右) Adjuster (R) | 2 | 右旋 Right threads |
| 15 | 21233-70340G | 棘爪 Lever | 2 | |
| 16 | 21233-70360G-L | 扭簧 Spring | 2 | 左 Left |
| 16 | 21233-70360G-R | 扭簧 Spring | 2 | 右 Right |
| 17 | 21233-70320G | 制动蹄回位弹簧 Spring shoe | 4 | |
| 18 | 21233-70350G | 回位弹簧 Spring | 2 | |
| 19 | 21233-70370G-L | 左手制动拉杆 Brake lever,LH | 2 | 左 Left |
| 19 | 21233-70370G-R | 右手制动拉杆 Brake lever,RH | 2 | 右 Right |
| 20 | 21233-70380G | 手制动推杆 Strut | 2 | |
| 21 | 21233-70390G | 弹簧 Spring | 2 | |
| 22 | GB21-76-M6x16 | 螺栓 M6x16 Bolt M6x16 | 4 | |
| 22 | GB93-76-6 | 垫圈 6 Washer 6 | 4 | |

图6 制动器
Fig.6 Wheel brake

ⓑ CPCD10/15/18-XW32B ⓔ CPYD15/18-XW21B ⓔ CPYD15/18-XW51B

| 序号 Item | 代号 Part No. | 名称 Description | 数量 Qty | 备注或适用车型 Remarks or Serial No. |
|------------|------------------|-------------------------------|-----------|----------------------------------|
| 23 | 24433-70160G | 弹性垫片 Washer | 2 | |
| 24 | 24433-70170G | 杆销挡圈 Retainer | 2 | |
| 25 | 21233-70410G | 导向板 Plate, Shoe guide | 2 | |
| 26 | 21233-70420G | 压簧拉杆 Pin, Shoe hold down | 4 | |
| 27 | 21233-70430G | 压簧座 Cup, Shoe hold hown | 8 | |
| 28 | 21233-70440G | 压簧 Spring, Shoe hold down | 4 | |
| 29 | 21233-70040G | 胶堵 Plug, Rubber | 2 | |
| 30 | XB150-111100-000 | 左制动钢索总成 Cable, Control, LH | 1 | 左 Left |
| 30 | XB150-112100-000 | 右制动钢索总成 Cable, Control, RH | 1 | 右 Right |
| 31 | 21233-70400G | 销 Pin | 2 | |
| | | | | |
| | | | | |
| | | | | |
| | | | | |
| | | | | |

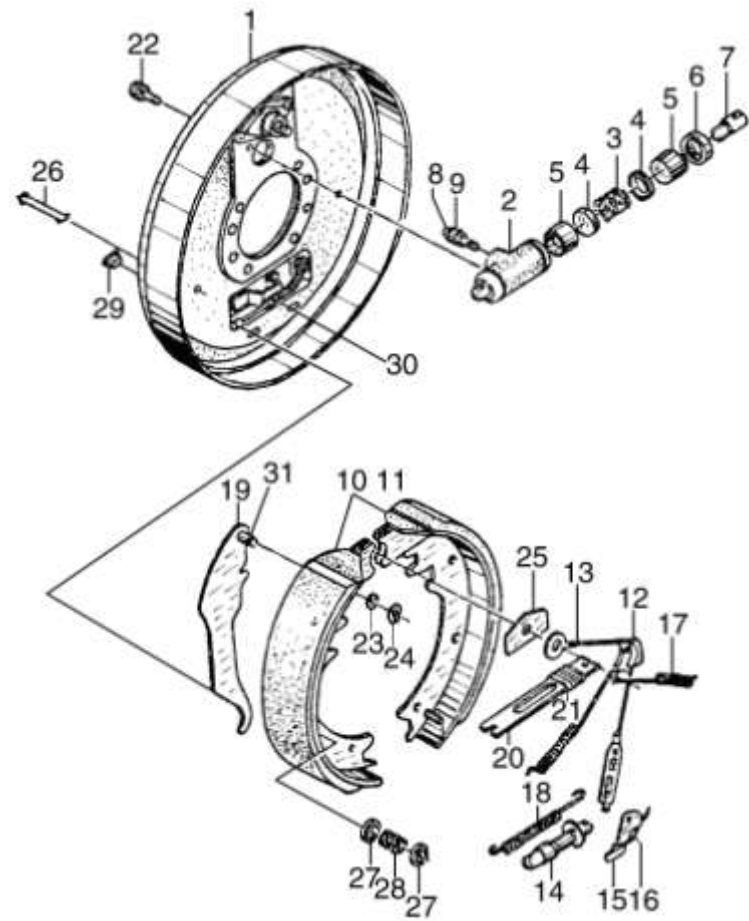
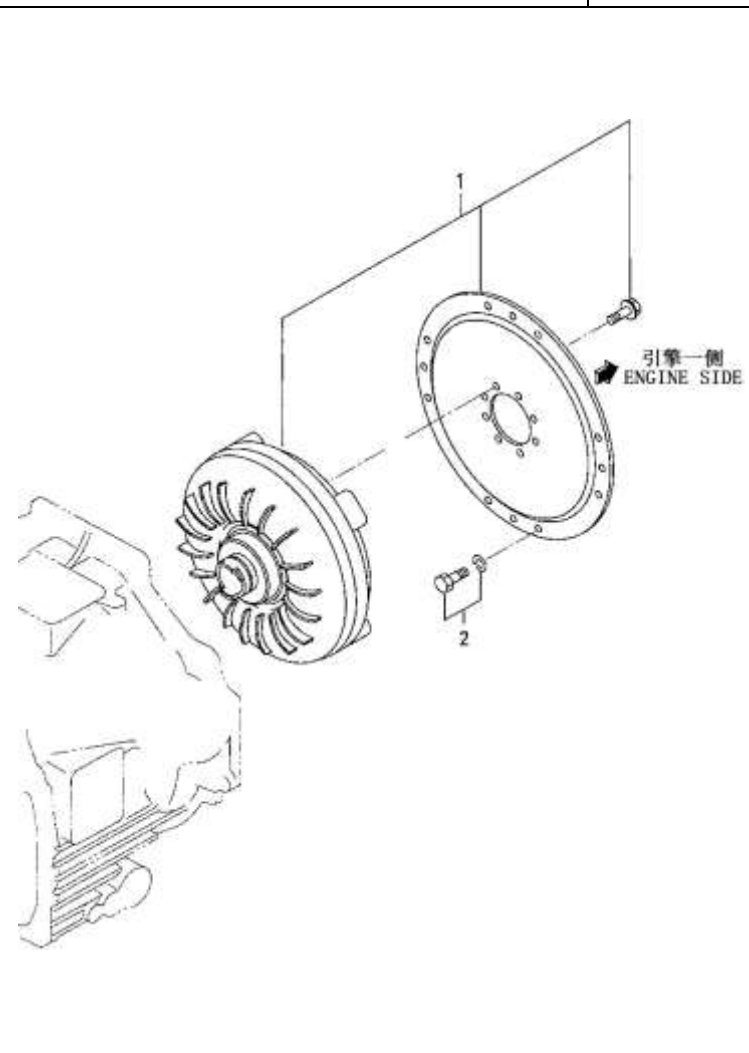


图 7 液力变矩器总成
Fig. 7 Torque converter assy

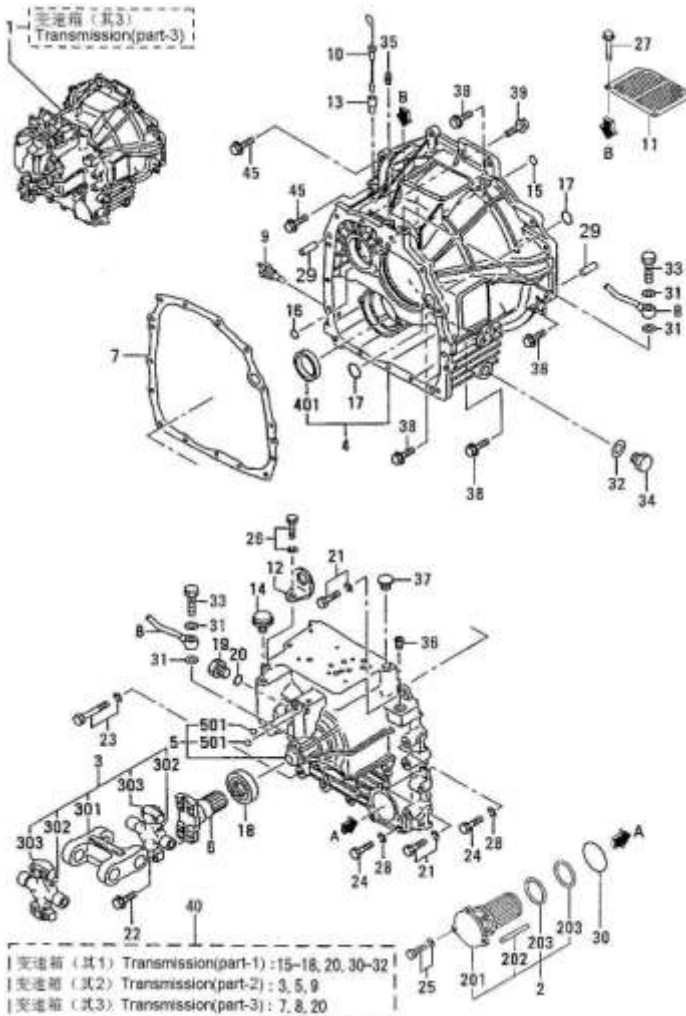
1.0-3.5t
Y43160X 液力传动变速箱 (冈村)
Y43160X Hydrodynamic Transmission Gearbox (Okamura)



| 序号 Item | 物料码 Part No. | 名称 Description | 数量 Qty | 备注或适用车型 Remarks Or Serial No. |
|------------|-----------------|---------------------------|-----------|----------------------------------|
| 1 | K91523-00020 | 液力变矩器 Torque-Converter | 1 | |
| 2 | KF1805-08016 | 螺栓垫圈组件 Bolt.W/Washer | 12 | |
| | | | | |
| | | | | |
| | | | | |
| | | | | |
| | | | | |
| | | | | |
| | | | | |
| | | | | |
| | | | | |
| | | | | |
| | | | | |
| | | | | |
| | | | | |
| | | | | |
| | | | | |

图8 变速箱（其1）
Fig.8 Transmission (part-1)

1.0-3.5t
Y43160X 液力传动变速箱 (冈村)
Y43160X Hydrodynamic Transmission Gearbox (Okamura)



| 序号 Item | 物料码 Part No. | 名称 Description | 数量 Qty | 备注或适用车型 Remarks Or Serial No. |
|------------|-----------------|---------------------------------|-----------|---------------------------------------|
| 1 | K91524-03000 | 变速箱总成 Transmission assy | 1 | INC:Fig.8-10 除外Except Fig.8 Item 3 |
| 2 | K91A24-08200 | 滤清器芯及盖 Strainer & cover | 1 | |
| 201 | K91A24-08211 | 滤清器总成 Strainer assy | 1 | |
| 202 | K91A24-08221 | 磁石 Magnet | 3 | |
| 203 | K91A24-08231 | 弹簧 Spring | 2 | |
| 3 | R561-130000-000 | 翼形联轴器总成 Joint assy,universal | 1 | |
| 301 | NO PART NO. | 万向联轴器 Yoke,couplin | 1 | |
| 302 | NO PART NO. | 十字轴 Nipple,grease | 2 | |
| 303 | NO PART NO. | 轴承 Bearing,gross | 2 | |
| 4 | K91524-16100 | 变矩器箱体 Housing,t/conv | 1 | |
| 401 | KF5014-50000 | 密封圈 Cap,sealing | 1 | |
| 5 | K91324-45302 | 变速箱体 Housing,transmission | 1 | |
| 501 | KF8000-12000 | 钢球 Ball,steel | 4 | |
| 6 | K91524-02300 | 输出法兰 Flange,t/m output | 1 | |
| 7 | K91324-16300 | 密封垫 Gasket | 1 | |

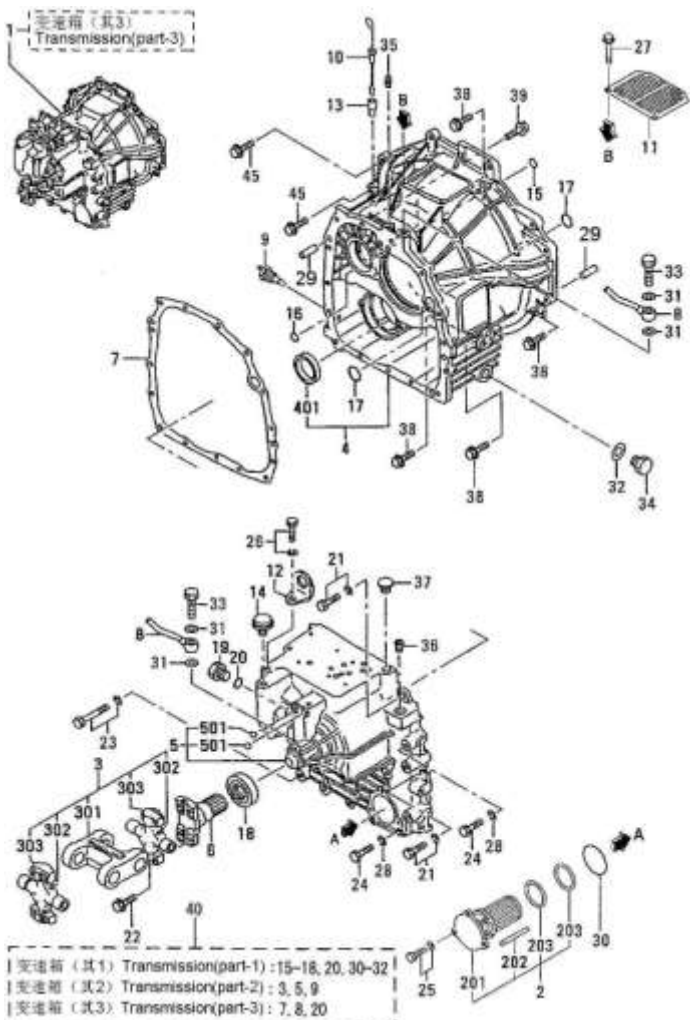
图8 变速箱（其1）
Fig.8 Transmission (part-1)

1.0-3.5t
Y43160X 液力传动变速箱 (冈村)
Y43160X Hydrodynamic Transmission Gearbox (Okamura)

| 序号 Item | 物料码 Part No. | 名称 Description | 数量 Qty | 备注或适用车型 Remarks Or Serial No. |
|------------|-----------------|-----------------------------|-----------|----------------------------------|
| 8 | K91428-00202 | 油管 Pipe,cooler | 2 | |
| 9 | K05204-50501 | 温度开关 Switch,thermo | 1 | |
| 10 | K91324-06400 | 油尺 Gage,oil level | 1 | |
| 11 | K91A24-22500 | 防尘盖 Cover,upper | 1 | |
| 12 | K91524-01500 | 吊耳 Plate,hanger | 1 | |
| 13 | K91228-03600 | 油尺管套 Pipe,oil level gage | 1 | |
| 14 | K91524-01900 | 空气阀 Breather | 1 | |
| 15 | K05500-24012 | 密封圈 O-ring | 3 | |
| 16 | K05500-19010 | 密封圈 O-ring | 2 | |
| 17 | K05500-24022 | 密封圈 O-ring | 2 | |
| 18 | K91A24-08600 | 油封 Seal,oil | 1 | |
| 19 | K05531-01100 | 螺塞 Plug,o-ring type | 1 | |
| 20 | K05500-24015 | 密封圈 O-ring | 1 | |
| 21 | KF2005-10030 | 螺栓、垫圈 Bolt,w/washer b/w | 5 | |
| 22 | K91A24-05200 | 法兰螺栓 Bolt,flange | 8 | |

图8 变速箱（其1）
Fig.8 Transmission (part-1)

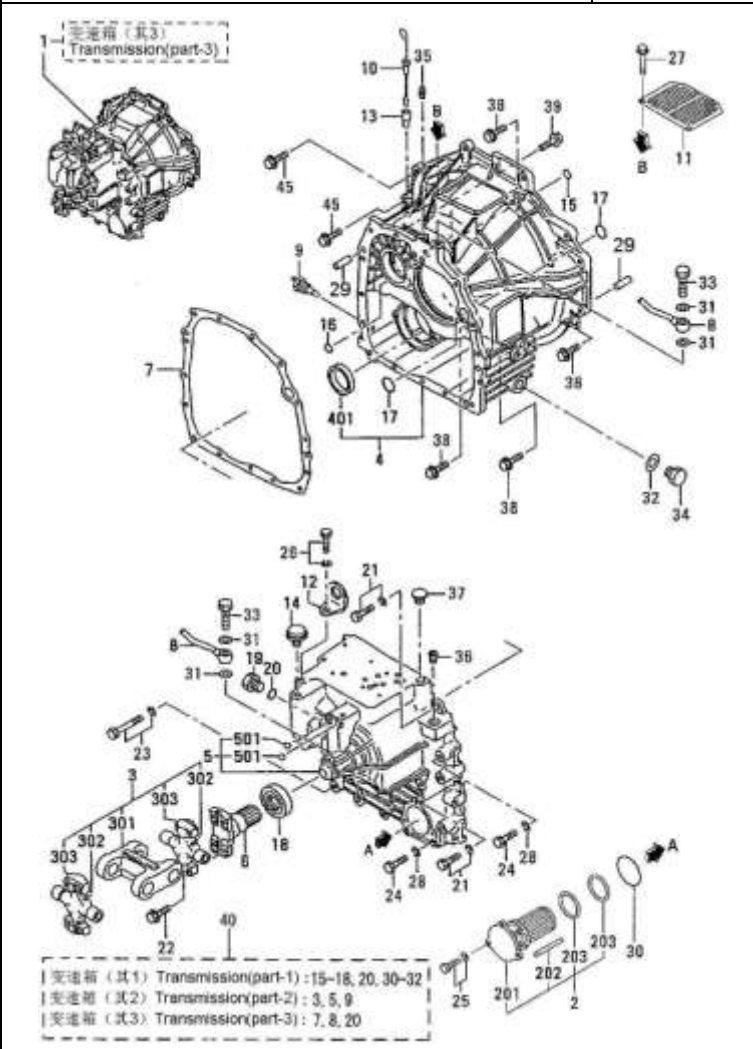
1.0-3.5t
Y43160X 液力传动变速箱 (冈村)
Y43160X Hydrodynamic Transmission Gearbox (Okamura)



| 序号 Item | 物料码 Part No. | 名称 Description | 数量 Qty | 备注或适用车型 Remarks Or Serial No. |
|------------|-----------------|----------------------------|-----------|----------------------------------|
| 23 | KF2005-10060 | 螺栓、垫圈 Bolt,w/washer b/w | 5 | |
| 24 | KF1155-10075 | 螺栓 Bolt | 3 | |
| 25 | K91A24-05900 | 法兰螺栓 Bolt,flange | 3 | |
| 26 | KF1805-12020 | 螺栓、垫圈 Bolt,w/washer b/w | 1 | |
| 27 | K91A24-08100 | 法兰螺栓 Bolt,flange | 2 | |
| 28 | KF2515-10000 | 弹簧垫 Washer,spring | 3 | |
| 29 | KF2846-12000 | 销 Pin,dowel | 2 | |
| 30 | K05500-31065 | 密封圈 O-ring | 1 | |
| 31 | KF4202-14000 | 密封垫 Gasket | 4 | |
| 32 | KF4202-20000 | 密封垫 Gasket | 1 | |
| 33 | K91A24-05100 | 吊耳 Eyebolt | 2 | |
| 34 | KF5000-20000 | 油堵 Plug,drain | 1 | |
| 35 | KF5006-10000 | 螺塞 Plug,tapered | 1 | |
| 36 | KF5005-26001 | 螺塞 Plug,tapered | 1 | |
| 37 | K91524-03300 | 塞子 Cap,filler | 1 | |

图 8 变速箱 (其1)
Fig.8 Transmission (part-1)

1.0-3.5t
Y43160X 液力传动变速箱 (冈村)
Y43160X Hydrodynamic Transmission Gearbox (Okamura)



| 序号 Item | 物料码 Part No. | 名称 Description | 数量 Qty | 备注或适用车型 Remarks Or Serial No. |
|------------|-----------------|------------------------|-----------|----------------------------------|
| 38 | K91524-12500 | 法兰螺栓 Bolt, flange | 8 | |
| 39 | K91524-02600 | 法兰螺栓 Bolt, flange | 2 | |
| 40 | K91324-00028 | 修理包 Repair kit, T/M | 1 | |
| | | | | |
| | | | | |
| | | | | |
| | | | | |
| | | | | |
| | | | | |
| | | | | |
| | | | | |
| | | | | |
| | | | | |
| | | | | |
| | | | | |
| | | | | |
| | | | | |
| | | | | |
| | | | | |
| | | | | |
| | | | | |
| | | | | |

图9 变速箱（其2）
Fig.9 Transmission (part-2)

1.0-3.5t
Y43160X 液力传动变速箱 (冈村)
Y43160X Hydrodynamic Transmission Gearbox (Okamura)

| 序号 Item | 物料码 Part No. | 名称 Description | 数量 Qty | 备注或适用车型 Remarks Or Serial No. |
|------------|-----------------|----------------------------|-----------|----------------------------------|
| 1 | K91224-00800 | 弹簧座 Retainer, spring | 2 | |
| 2 | K91224-17601 | 活塞 Piston, clutch | 2 | |
| 3 | K91B24-00700 | 活塞环 Ring, seal piston | 2 | |
| 4 | K65425-13204 | 轴向垫圈 Washer, thrust | 2 | |
| 5 | K91B24-00600 | 密封环 Ring, seal | 2 | |
| 6 | K91324-02702 | 摩擦片 Plate, friction | 10 | |
| 7 | K91324-12601 | 动力传动片 Plate, mating | 12 | |
| 8 | K91324-04700 | 压力传动片 Plate, pressure | 2 | |
| 9 | K58321-05000 | 密封环 Seal, ring | 4 | |
| 10 | K58622-03001 | 卡簧 Ring, snap | 2 | |
| 11 | K58622-15201 | 轴向垫圈 Washer, thrust | 2 | |
| 12 | K58622-09500 | 螺旋件 Screw set | 2 | |
| 13 | K58036-04600 | 卡簧 Ring, snap | 2 | |
| 14 | K91524-20020 | 输入轴 Shaft, input clutch | 1 | |
| 1401 | K05950-08008 | 螺钉 Screw set | 2 | |

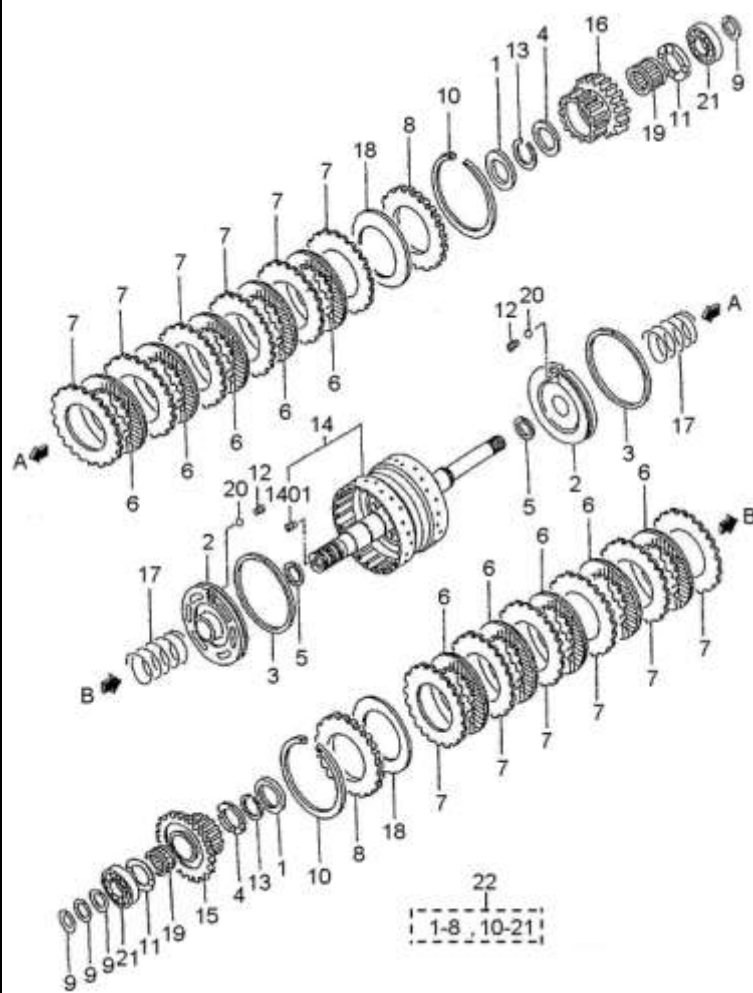


图9 变速箱（其2）
Fig.9 Transmission (part-2)

1.0-3.5t
Y43160X 液力传动变速箱 (冈村)
Y43160X Hydrodynamic Transmission Gearbox (Okamura)

| 序号 Item | 物料码 Part No. | 名称 Description | 数量 Qty | 备注或适用车型 Remarks Or Serial No. |
|------------|-----------------|------------------------------|-----------|----------------------------------|
| 15 | K91324-25500 | 前进齿轮 Gear,forward | 1 | |
| 16 | K91324-25600 | 倒车齿轮 Gear,reverse | 1 | |
| 17 | K91324-06500 | 回位弹簧 Spring,clutch return | 2 | |
| 18 | K91524-11200 | 弹性缓冲片 Spring,belle ville | 2 | |
| 19 | K91524-12900 | 轴承 Bearing,needle | 2 | |
| 20 | KF8000-08000 | 钢球 Ball,steel | 2 | |
| 21 | KF8010-06306 | 轴承 Bearing,ball | 2 | |
| 22 | K91524-11010 | 离合器缸总成 Clutch pack assy | 1 | INC:1-8,10-21 |
| | | | | |
| | | | | |
| | | | | |
| | | | | |
| | | | | |
| | | | | |
| | | | | |
| | | | | |
| | | | | |
| | | | | |
| | | | | |
| | | | | |
| | | | | |
| | | | | |
| | | | | |

图 10 变速箱 (其 3)
Fig.10 Transmission(part-3)

1.0-3.5t
Y43160X 液力传动变速箱 (冈村)
Y43160X Hydrodynamic Transmission Gearbox (Okamura)

| 序号 Item | 物料码 Part No. | 名称 Description | 数量 Qty | 备注或适用车型 Remarks Or Serial No. |
|------------|-----------------|----------------------------|-----------|----------------------------------|
| 1 | K91524-10030 | 导轮轴总成 Shaft assy,stator | 1 | |
| 101 | KF8000-12000 | 钢球 Ball,steel | 1 | |
| 102 | KF8000-14000 | 钢球 Ball,steel | 3 | |
| 103 | K04826-21600 | 密封盖 Cap,sealing | 1 | |
| 104 | NO PART NO. | 定轴 Shaft,stator | 1 | |
| 2 | K91224-02600 | 油压调节阀 Valve,relief | 2 | |
| 3 | K91224-12500 | 弹簧 Spring,valve | 2 | |
| 4 | K91524-10010 | 机油泵体 Body assy,pump | 1 | |
| 401 | K91524-05600 | 衬套 Bushing | 1 | |
| 402 | NO PART NO. | 泵体 Body,pump | 1 | |
| 5 | K91524-23100 | 油泵齿轮 Gear,pump drive | 1 | Z=25 |
| 6 | K91524-13200 | 油泵齿轮 Gear,internal | 1 | Z=30 |
| 7 | K91A24-07900 | 油封 Seal,oil | 1 | |
| 8 | K91A24-08300 | 密封圈 O-ring | 1 | |
| 9 | K91524-03500 | 螺栓 Bolt,flange | 1 | |

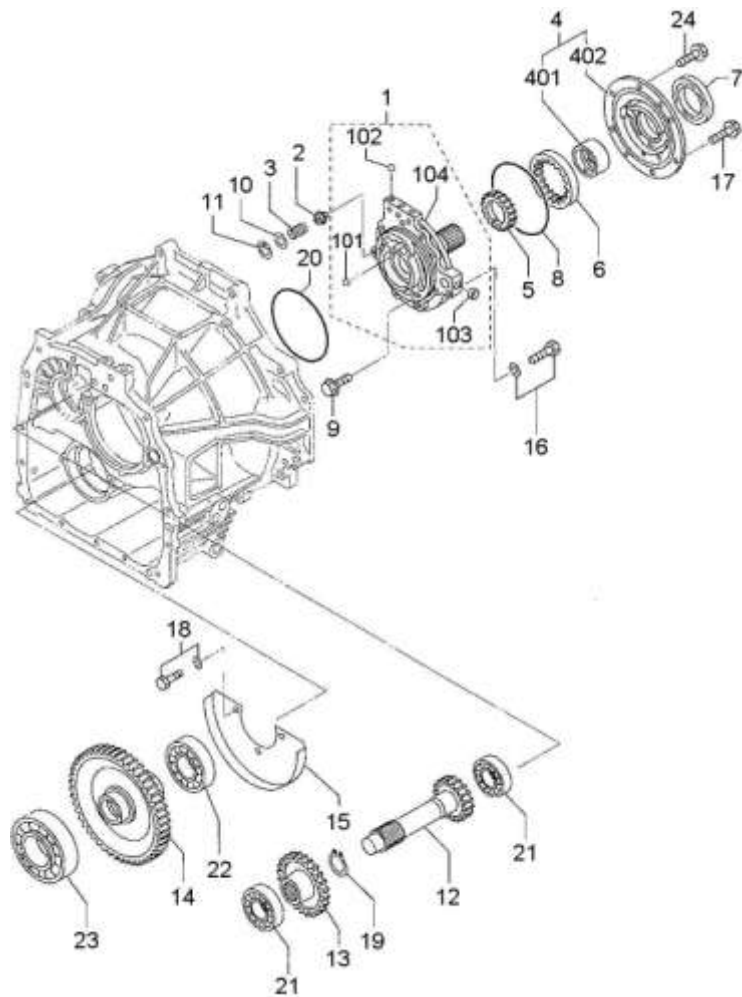


图 10 变速箱 (其 3)
Fig.10 Transmission(part-3)

1.0-3.5t
Y43160X 液力传动变速箱 (冈村)
Y43160X Hydrodynamic Transmission Gearbox (Okamura)

| 序号 Item | 物料码 Part No. | 名称 Description | 数量 Qty | 备注或适用车型 Remarks Or Serial No. |
|------------|-----------------|----------------------------|-----------|----------------------------------|
| 10 | KF2500-10000 | 垫圈 Washer,plain | 2 | |
| 11 | KF3202-02200 | 卡簧 Ring,snap | 2 | |
| 12 | K91324-05700 | 惰轮轴 Shaft,idler | 1 | |
| 13 | K91324-05800 | 齿轮 Gear,idler | 1 | Z=35 |
| 14 | K91324-15903 | 输出齿轮 Gear,output | 1 | Z=70 |
| 15 | K91324-22900 | 挡油板 Plate,baffle | 1 | |
| 16 | KF1805-08035 | 螺栓、垫圈 Bolt,w/washer b/w | 1 | |
| 17 | K91524-03500 | 法兰螺栓 bolt,flange | 5 | |
| 18 | K91A24-08100 | 法兰螺栓 Bolt,flange | 2 | |
| 19 | KF3200-03500 | 卡簧 Ring,snap | 1 | |
| 20 | K05500-31125 | 密封圈 O-ring | 1 | |
| 21 | KF8010-06306 | 轴承 Bearing,ball | 2 | |
| 22 | KF8004-06012 | 轴承 Bearing,ball | 1 | |
| 23 | KF8006-06212 | 轴承 Bearing,ball | 1 | |
| 24 | K91524-04200 | 法兰螺栓 Bolt,flange | 1 | |

图 11 控制阀
Fig.11 Control valve

1.0-3.5t
Y43160X 液力传动变速箱 (冈村)
Y43160X Hydrodynamic Transmission Gearbox (Okamura)

| 序号 Item | 物料码 Part No. | 名称 Description | 数量 Qty | 备注或适用车型 Remarks Or Serial No. |
|------------|-----------------|--------------------------------|-----------|----------------------------------|
| A1 | K91328-04000 | 控制阀总成 Valve assy,control | 1 | |
| 2 | K91228-00501 | 弹簧底座 Seat,spring | 1 | |
| 3 | K91228-06700 | 离合器阀弹簧 Spring,inchng valve | 1 | |
| 4 | K91228-01300 | 主油压阀弹簧 Spring,main relief | 1 | |
| 5 | K91228-15201 | 缓冲阀活塞 Piston,accumulator | 1 | |
| 6 | K91228-15302 | 弹簧底座 Seat,spring | 1 | |
| 7 | K91228-26300 | 弹簧(外) Spring,outer | 1 | |
| 8 | K91228-16400 | 弹簧(内) Spring,inner | 1 | |
| 9 | NO PART NO. | 离合器阀柱塞 Plunger,clutch valve | 1 | |
| 10 | K91228-10700 | 油封 Seal,oil | 1 | |
| 11 | K91228-10800 | 主油压弹簧 Spring,main relief | 1 | |
| 12 | K91228-11100 | 回位弹簧 Spring,return | 1 | |
| 13 | K91228-16500 | 离合器阀 Valve,clutch | 1 | |
| 14 | K65528-00902 | 组合塞 Plug,o-ring type | 1 | |
| 15 | K91328-04300 | 销 Pin | 1 | |

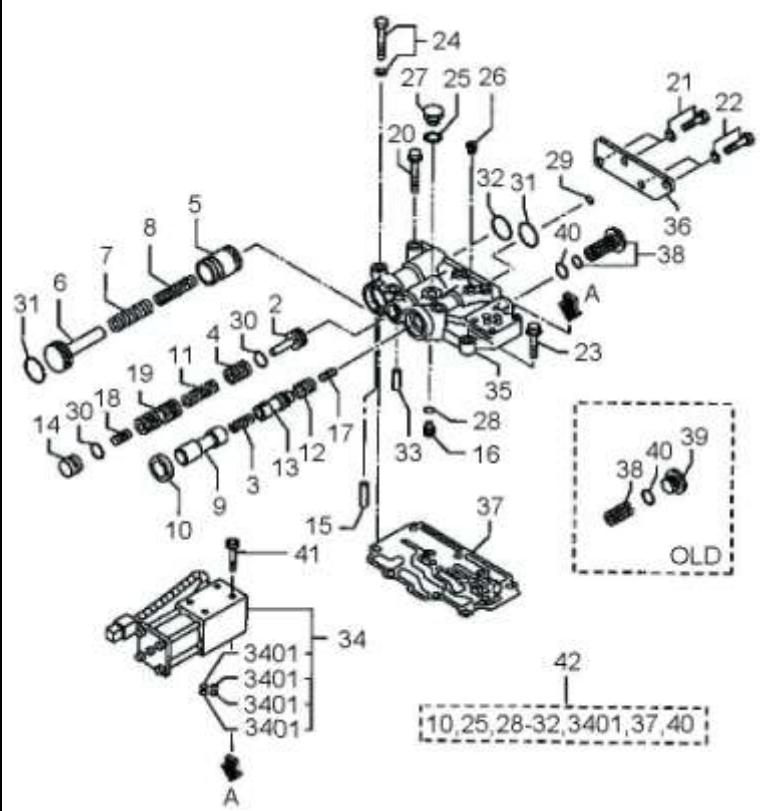


图 11 控制阀
Fig.11 Control valve

1.0-3.5t
Y43160X 液力传动变速箱 (冈村)
Y43160X Hydrodynamic Transmission Gearbox (Okamura)

| 序号 Item | 物料码 Part No. | 名称 Description | 数量 Qty | 备注或适用车型 Remarks Or Serial No. |
|------------|-----------------|----------------------------|-----------|----------------------------------|
| 16 | K58628-01702 | 定位销 Pin,stopper | 1 | |
| 17 | K51727-05402 | 螺杆 Slug | 1 | |
| 18 | K51727-06502 | 螺杆 Slug | 1 | |
| 19 | NO PART NO. | 调压阀 Valve,regulator | 1 | |
| 20 | K91328-04500 | 螺栓 Bolt,flange | 4 | |
| 21 | K91328-03800 | 螺栓 Bolt,coating | 2 | |
| 22 | K91328-03900 | 螺栓 Bolt,coating | 2 | |
| 23 | K91328-04400 | 螺栓 Bolt,flange | 2 | |
| 24 | KF1805-08065 | 螺栓、垫圈 Bolt,w/washer B/W | 4 | |
| 25 | KF4202-14000 | 密封垫 Gasket | 1 | |
| 26 | KF5005-10001 | 螺塞 Plug,tapered | 1 | |
| 27 | KF5000-14000 | 油堵 Plug,drain | 1 | |
| 28 | K05500-19008 | 密封圈 O-ring | 1 | |
| 29 | K05500-19010 | 密封圈 O-ring | 1 | |
| 30 | K05500-24015 | 密封圈 O-ring | 2 | |

图 11 控制阀
Fig.11 Control valve

1.0-3.5t
Y43160X 液力传动变速箱 (冈村)
Y43160X Hydrodynamic Transmission Gearbox (Okamura)

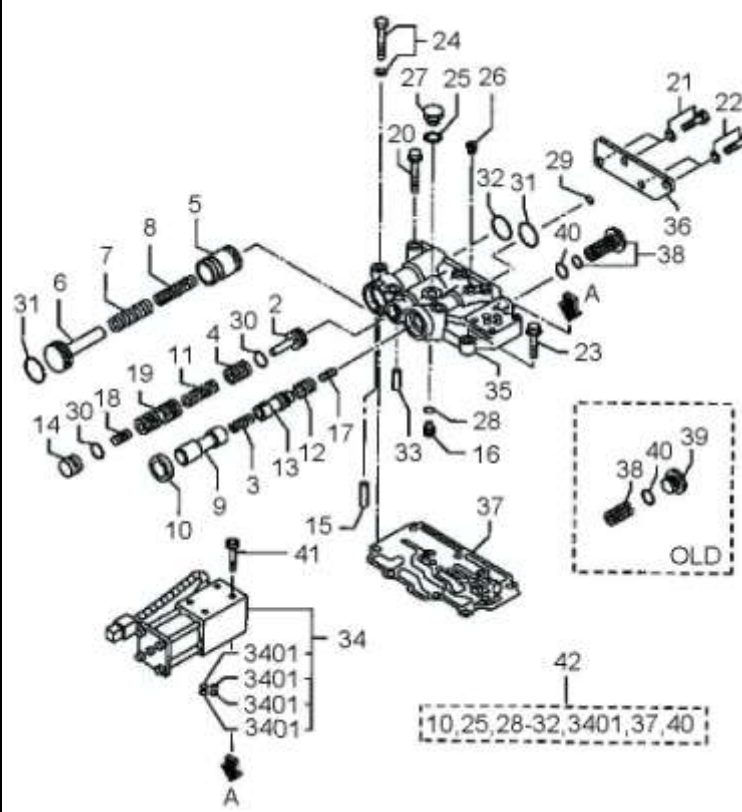
| 序号 Item | 物料码 Part No. | 名称 Description | 数量 Qty | 备注或适用车型 Remarks Or Serial No. |
|------------|-----------------|--|-----------|----------------------------------|
| | |  | | |
| 31 | K05500-35025 | 密封圈 O-ring | 2 | |
| 32 | K05500-35030 | 密封圈 O-ring | 1 | |
| 33 | K91328-04200 | 销 Pin | 1 | |
| 34 | K91A28-30010 | 电磁阀总成 Valve assy,solenoid | 1 | |
| 3401 | K91328-08500 | 密封圈 O-ring | 4 | |
| 35 | | 控制阀体 Body,valve | 1 | |
| 36 | K91328-03200 | 挡板 Plate,cover | 1 | |
| 37 | K91329-04700 | 密封垫 Gasket,valve | 1 | |
| 38 | K05530-50300 | 油塞 Plug,o-ring seal | 1 | |
| 40 | K00500-24014 | 密封圈 O-ring | 4 | |
| 41 | K91328-04800 | 螺栓 Bolt,solenoid valve | 1 | |
| 42 | K91328-00048 | 修理包 Repair kit,C/V | 1 | INC:10,25,28-32, 3401,37,40 |
| | | | | |
| | | | | |
| | | | | |

图 12 主减速器·差速器总成(1.0-1.8t)
Fig.12 Reduction & Differential(1.0-1.8t)

1.0-1.8t
Y43160X 液力传动变速箱 (冈村)
Y43160X Hydrodynamic Transmission Gearbox (Okamura)

| 序号 Item | 物料码 Part No. | 名称 Description | 数量 Qty | 备注或适用车型 Remarks Or Serial No. |
|------------|-----------------|----------------------------|-----------|----------------------------------|
| 1 | K91331-40010 | 主减速器壳 Carrier assy,diff | 1 | |
| 101 | K91231-00500 | 轴承 Cap,Bearing | 2 | |
| 102 | K91231-03200 | 螺栓、垫圈 Bolt,Flange | 4 | |
| 103 | K91331-30101 | 差速器座 Carrier,Diff | 1 | |
| 2 | K91331-40200 | 桥壳 Cover, Carrier diff | 1 | |
| 3 | K91531-00800 | 输入法兰 Flange,Input t/f | 1 | |
| 4 | K91331-30400 | 防尘盖 Cover,Diff pinion | 1 | |
| 5 | K91331-20050 | 斜齿轮组 Bevel,Gear set | 1 | |
| 501 | K91226-06200 | 斜齿轮 Gear,Bevel | 1 | Z=32 |
| 502 | K91331-30500 | 斜齿轴 Pinion,Bevel | 1 | Z=7 |
| 8 | K91331-03700 | 调整垫片 Shim ar t=0.05 | 1 | |
| 9 | K91331-03800 | 调整垫片 Shim ar t=0.1 | 1 | |
| 10 | K91331-03900 | 调整垫片 Shim ar t=0.2 | 1 | |
| 11 | K91331-04200 | 调整垫片 Shim ar t=1.0 | 2 | |
| 12 | K91331-01200 | 调整垫片 Shim ar t=0.1 | 1 | |

图 12 主减速器·差速器总成(1.0-1.8t)
Fig.12 Reduction & Differential(1.0-1.8t)

1.0-1.8t
Y43160X 液力传动变速箱 (冈村)
Y43160X Hydrodynamic Transmission Gearbox (Okamura)

| 序号 Item | 物料码 Part No. | 名称 Description | 数量 Qty | 备注或适用车型 Remarks Or Serial No. |
|------------|-----------------|-----------------------------|-----------|----------------------------------|
| 13 | K91331-01300 | 调整垫片 Shim ar t=0.2 | 1 | |
| 14 | K91331-01400 | 调整垫片 Shim ar t=0.5 | 1 | |
| 15 | K91331-01500 | 调整垫片 Shim ar t=1.0 | 1 | |
| 17 | K91331-11801 | 驱动齿轮 Gear,Drive t/f c | 1 | Z=33 |
| 18 | K91331-12401 | 驱动齿轮 Gear,Drive t/f c | 1 | Z=46 |
| 22 | K05644-04200 | 锥轴承 Bearing,Taper roller | 1 | |
| 23 | K05644-04300 | 锥轴承 Bearing,Taper roller | 1 | |
| 24 | K91231-40020 | 差速器总成 Diff gear assy | 1 | |
| 2401 | KF2850-06040 | 弹簧销 Pin,Spring | 1 | |
| 2402 | K65631-03400 | 齿轴 Shaft,Pinion | 1 | |
| 2403 | K91231-00700 | 斜差速齿轮 Gear-diff Bevel | 2 | Z=16 |
| 2404 | K91231-00800 | 差速齿轮 Gear-diff Pinion | 2 | Z=10 |
| 2405 | K91231-01100 | 隔套 Spacer,Side gear | 2 | |
| 2406 | K91231-30600 | 盖 Case | 1 | |
| 25 | K91531-00700 | 定位垫圈 Spacer | 1 | |

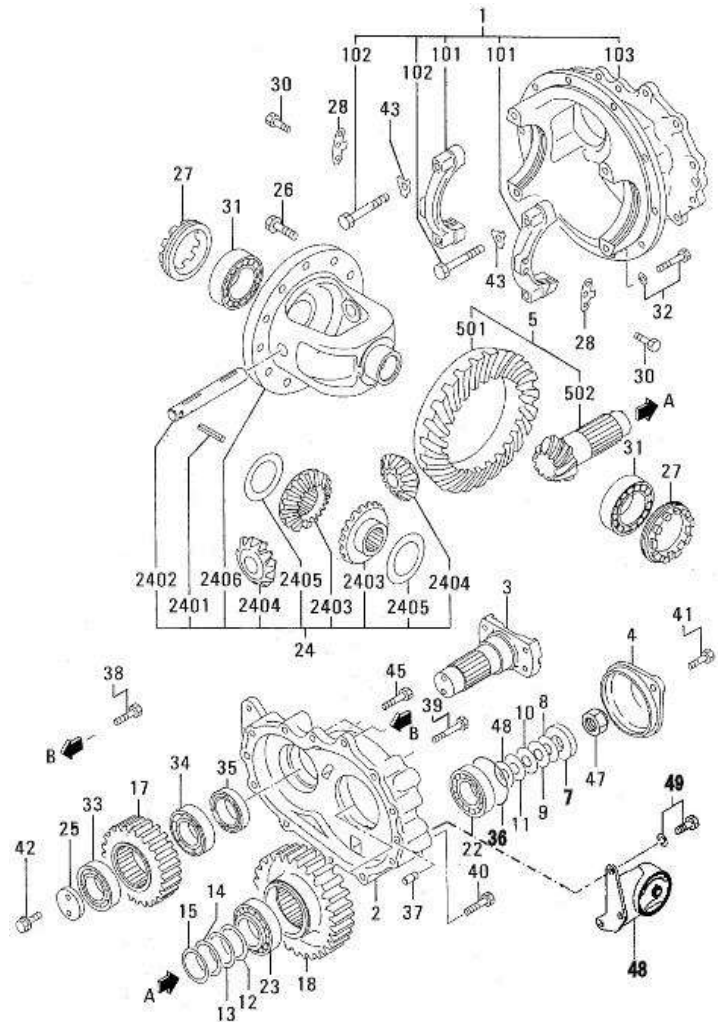
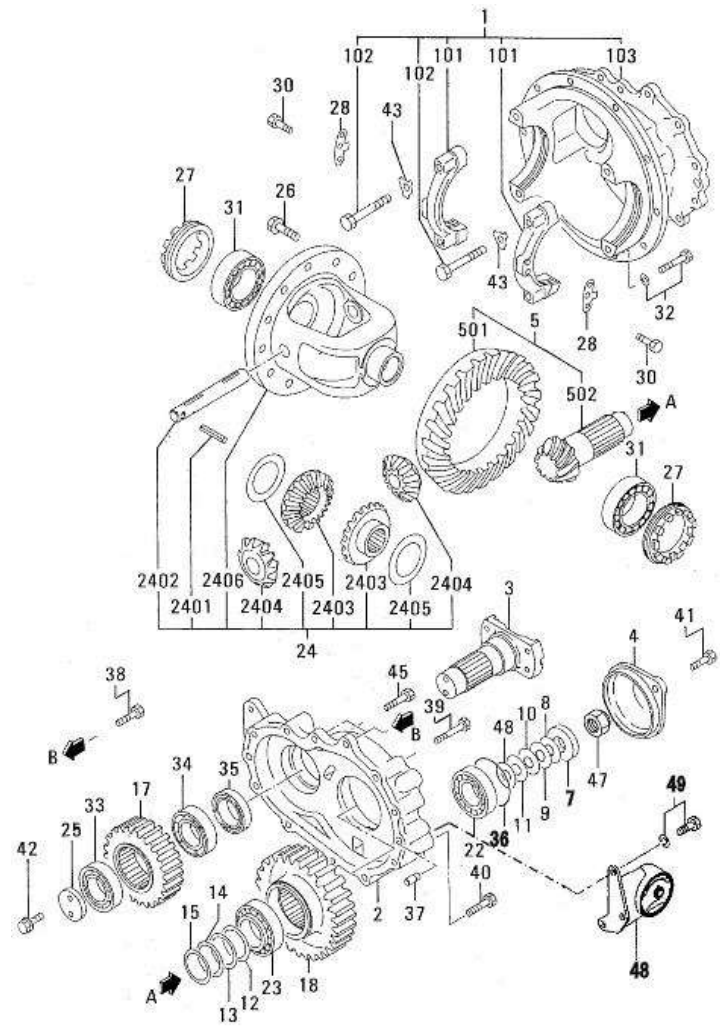


图 12 主减速器·差速器总成(1.0-1.8t)
Fig.12 Reduction & Differential(1.0-1.8t)

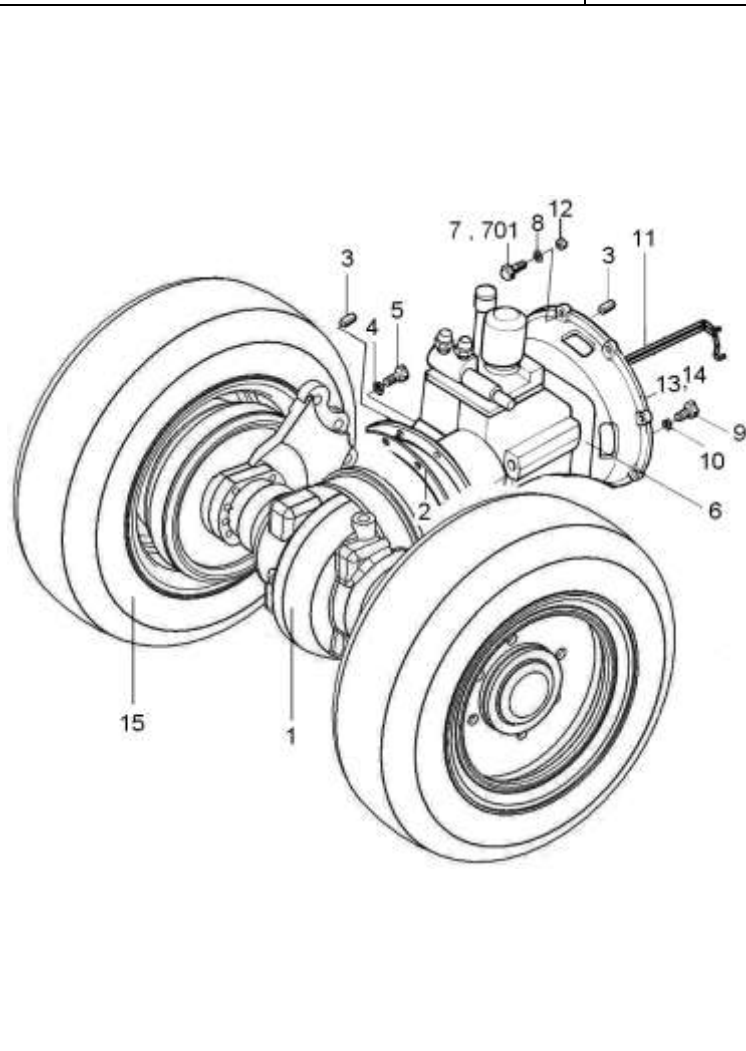
1.0-1.8t
Y43160X 液力传动变速箱 (冈村)
Y43160X Hydrodynamic Transmission Gearbox (Okamura)



| 序号 Item | 物料码 Part No. | 名称 Description | 数量 Qty | 备注或适用车型 Remarks Or Serial No. |
|------------|-----------------|-----------------------------|-----------|----------------------------------|
| 26 | K91231-10200 | 螺栓 Bolt,Gear | 12 | |
| 27 | K64331-14302 | 侧轴承 Nut,Side bearing | 2 | |
| 28 | K64331-14100 | 锁销 Plate,Lock | 2 | |
| 30 | KF1805-08012 | 螺栓、组合垫圈 Bolt/Washer | 2 | |
| 31 | KF8140-30211 | 锥轴承 Bearing,Tapered roll | 2 | |
| 33 | KF8006-06208 | 轴承 Bearing,Ball | 1 | |
| 34 | KF8006-06209 | 轴承 Bearing,Ball | 1 | |
| 35 | K05564-35100 | 油封 Seal,Oil | 1 | |
| 36 | KF3153-11000 | 密封圈 O-ring | 1 | |
| 37 | FK2846-12000 | 定位销 Pin,Dowel | 2 | |
| 38 | K91A24-03300 | 螺栓、垫圈 Bolt,Flange | 2 | |
| 39 | K91A24-07600 | 螺栓、垫圈 Bolt,Flange b/w | 7 | |
| 40 | K91A24-07700 | 螺栓、垫圈 Bolt,Flange | 1 | |
| 41 | K91A24-13400 | 螺栓、垫圈 Bolt,Flange b/w | 2 | |
| 42 | K92233-31600 | 螺栓 Bolt | 1 | |

图 13 传动系统
Fig.13 Driving system

Ⓐ CPCD10/15/18-XW32F ⓓ CPYD15/18-XW21F Ⓞ CPYD15/18-XW51F Ⓞ CPCD10/15/18-XW12F
ⓗ CPCD10/15/18-XW10F ⓘ CPQD10/15/18-XW21F



| 序号 Item | 物料码 Part NO. | 名称 Description | 数量 Qty | 备注或适用车型 Remarks Or Serial NO. |
|------------|-------------------|-------------------------------------|-----------|------------------------------------|
| 1 | XF150-110000-000 | 驱动桥总成 Drive axle assy | 1 | 见图14 See Fig.14 单轮, Single tyre |
| 1 | XF150-110000-500 | 驱动桥总成 Drive axle assy | 1 | 见图14 See Fig.14 双轮, Double tyre |
| 2 | XF250-100001-000 | 纸垫 Gasket | 1 | |
| 3 | G000119-012035-03 | 销 D12×35 Pin D12×35 | 3 | |
| 4 | G000093-000012-00 | 垫圈 12 Washer 12 | 13 | |
| 5 | G005783-012035-01 | 螺栓 M12×35 Bolt M12×35 | 13 | |
| 6 | XF150-120000-G00 | 液力变速箱 Hydraulic transmission box | 1 | 见图 17-图 21 See Fig.17- Fig.21 |
| 7 | G005786-010035-04 | 螺栓 M10×1.25×35 Bol M10×1.25×35 | 10 | Ⓐ ⓗ |
| 7 | G005783-010035-00 | 螺栓 M10×35 Bol M10×35 | 10 | ⓓ ⓘ <2011-12-01 |
| 7 | G005783-010035-00 | 螺栓 M10×35 Bol M10×35 | 2 | ⓓ Ⓞ ⓘ ≥2011-12-01 |
| 701 | G005783-010045-00 | 螺栓 M10×45 Bol M10×45 | 6 | |
| 8 | G000093-000010-00 | 垫圈 10 Washer 10 | 10 | Ⓐ ⓗ |
| 8 | G000093-000010-00 | 垫圈 10 Washer 10 | 8 | ⓓ Ⓞ ⓘ |
| 9 | G005783-008020-01 | 螺栓 M8×20 Bol M8×20 | 12 | Ⓐ ⓗ |
| 9 | G005786-008020-04 | 螺栓 M10×1.25×20 Bol M10×1.25×20 | 12 | ⓓ Ⓞ ⓘ |

图 13 传动系统
Fig.13 Driving system

Ⓐ CPCD10/15/18-XW32F Ⓓ CPYD15/18-XW21F Ⓞ CPYD15/18-XW51F Ⓞ CPCD10/15/18-XW12F
Ⓗ CPCD10/15/18-XW10F ⓘ CPQD10/15/18-XW21F

| 序号 Item | 物料码 Part NO. | 名称 Description | 数量 Qty | 备注或适用车型 Remarks Or Serial NO. |
|------------|-------------------|------------------------------------|-----------|----------------------------------|
| 10 | G000093-000008-00 | 垫圈 8 Washer 8 | 12 | |
| 11 | XF150-120000-000 | 冷却油管总成 Oil coolingpipe assy | 1 | Ⓐ Ⓗ See Fig.15 |
| 11 | XF251-120000-000 | 冷却油管总成 Oil coolingpipe assy | 1 | Ⓓ Ⓞ ⓘ See Fig.15 |
| 11 | XF155-120000-000 | 冷却油管总成 Oil coolingpipe assy | 1 | Ⓞ |
| 12 | G006170-000010-00 | 螺母 M10 Nut M10 | 2 | Ⓓ Ⓞ ⓘ |
| 13 | R564-100001-000 | 垫片 Washer | 1 | Ⓓ ⓘ <2011-12-01 |
| 14 | R564-100002-000 | 垫片 Washer | 1 | |
| 15 | | 轮胎总成 (单轮) Type-assy,Single tyre | 2 | 见图 3 See Fig.3 |
| 15 | | 轮胎总成(双轮) Type-assy,Double tyre | 2 | 见图 4 See Fig.4 |
| 15 | | 轮胎总成(双轮) Type-assy,Double tyre | 2 | 见图 4 See Fig.4 |
| | | | | |
| | | | | |
| | | | | |
| | | | | |
| | | | | |

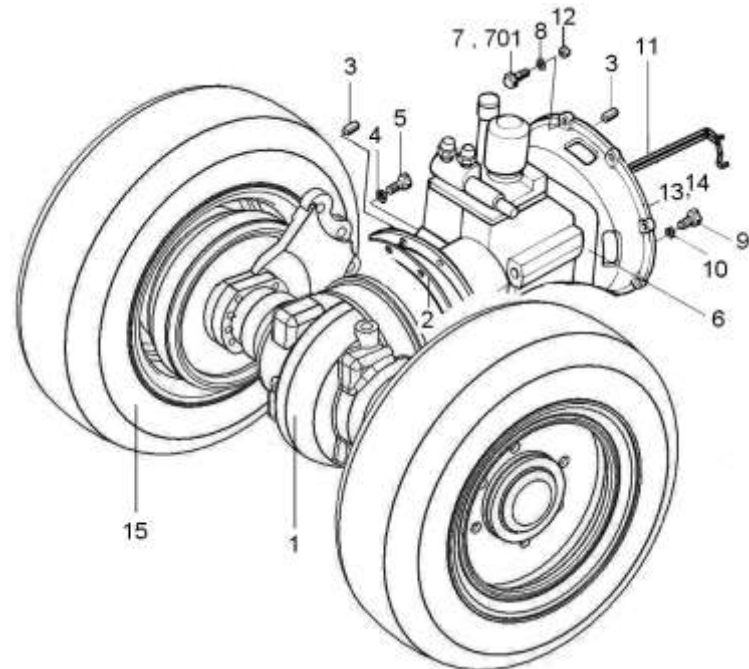


图 14 驱动桥总成
Fig.14 Drive axle assy

Ⓐ CPCD10/15/18-XW32F Ⓓ CPYD15/18-XW21F Ⓞ CPYD15/18-XW51F Ⓞ CPCD10/15/18-XW12F
Ⓕ CPCD10/15/18-XW10F Ⓡ CPQD10/15/18-XW21F

| 序号 Item | 物料码 Part No. | 名称 Description | 数量 Qty | 备注或适用车型 Remarks Or Serial No. |
|------------|-------------------|--------------------------|-----------|--|
| A1 | XF300-113000-000 | 桥体 Axle | 1 | INC:1,7,8,9 |
| 1 | XF150-113001-000 | 套管 Plug | 2 | 不单独提供 Do not supply separately |
| 2 | Q903-Z1/8-G00 | 通气塞 Vented plug | 1 | <2013-05-24 |
| 3 | N163-110017-000 | 螺塞 Plug | 1 | |
| 2 | XB450-115000-000 | 呼吸器 Vented plug | 1 | 前期用户, Early users 可两件一起更换 Can replacement two together |
| 3 | RC250-110004-000 | 内六角螺塞 Plug | 1 | ≥2013-05-24 |
| 4 | J000982-000022-00 | 垫圈 22 Washer 22 | 1 | |
| 5 | J000982-000016-00 | 垫圈 16 Washer 16 | 1 | |
| 6 | J001000-0161P5-00 | 螺塞 16×1.5 Plug 16×1.5 | 1 | |
| 7 | XF250-113002-000 | 桥壳 Axle housing | 1 | 不单独提供 Do not supply separately |
| 8 | G007244-000010-00 | 垫圈 10 Washer 10 | 2 | |
| 9 | G005783-010040-01 | 螺栓 M10×40 Bolt M10×40 | 2 | |
| 10 | G007244-000012-00 | 垫圈 12 Washer 12 | 16 | |
| 11 | XF250-110003-000 | 连接螺栓 Bolt | 8 | |
| 12 | XF150-110001-000 | 左支撑板 Plate | 1 | |

图 14 驱动桥总成
Fig.14 Drive axle assy

Ⓐ CPCD10/15/18-XW32F Ⓓ CPYD15/18-XW21F Ⓞ CPYD15/18-XW51F Ⓞ CPCD10/15/18-XW12F
Ⓕ CPCD10/15/18-XW10F Ⓡ CPQD10/15/18-XW21F

| 序号 Item | 物料码 Part No. | 名称 Description | 数量 Qty | 备注或适用车型 Remarks Or Serial No. |
|------------|----------------------|--|-----------|----------------------------------|
| 13 | XF150-110006-000 | 右支撑板 Plate | 1 | |
| 14 | XF250-110002-000 | 垫板 Plate | 1 | |
| 15 | G000093-000020-00 | 垫圈 20 Washer 20 | 8 | |
| 16 | G006171-000020-05 | 螺母 M20×1.5 Nut M20×1.5 | 8 | |
| 17 | XF150-111000-000 | 左制动器 Left brake | 1 | |
| 18 | XF150-112000-000 | 右制动器 Right brake | 1 | |
| 19 | XF150-110003-000 | 螺栓 Bolt | 16 | ≤2011-10 螺柱 Stud |
| 20 | G006171-000012-02 | 螺母 M12×1.5 Nut M12×1.5 | 16 | ≤2011-10 |
| 21 | N030-110013-000 | 轮毂螺栓 Bolt, Hub | 12 | 单轮 Single tyre |
| 21 | R840-110001-500 | 轮毂螺栓 Bolt, Hub | 12 | 双轮 Double tyre |
| 22 | HG40692-075010512-01 | 油封 SD75×105×12 Oil seal SD75×105×12 | 2 | |
| 23 | GT00276-0033112-00 | 轴承 33112 Bearing 33112 | 4 | |
| 24 | XF150-110004-000 | 轮毂 Hub | 2 | |
| 25 | N030-110010-000 | 锁紧螺母 Lock nut | 2 | |
| 26 | N030-110011-000 | 锁紧片 Locking shim | 2 | |

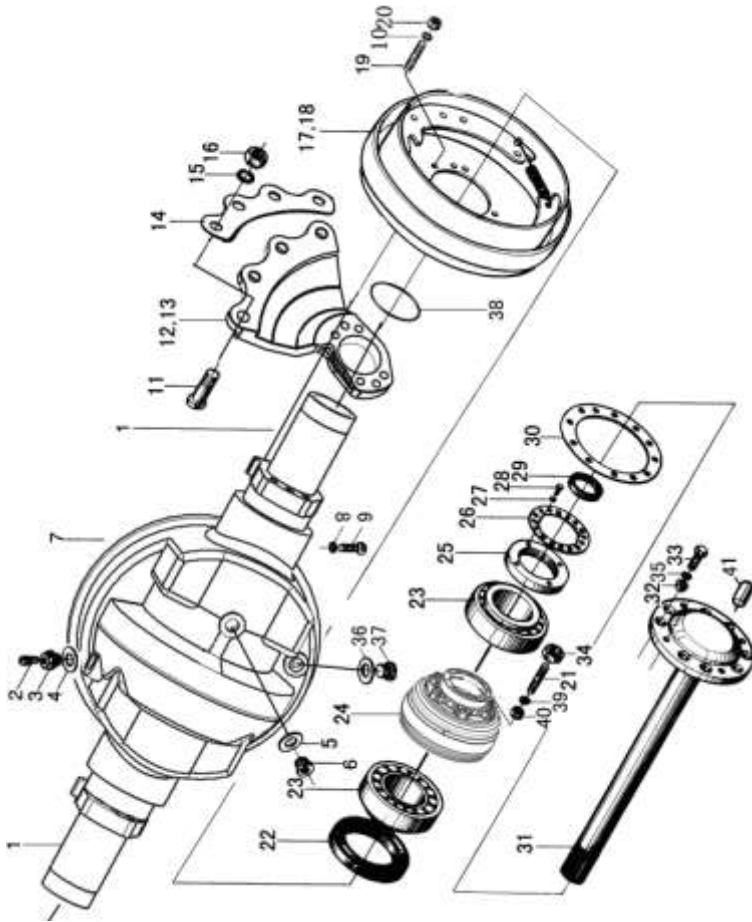


图 14 驱动桥总成
Fig.14 Drive axle assy

Ⓐ CPCD10/15/18-XW32F Ⓓ CPYD15/18-XW21F Ⓞ CPYD15/18-XW51F Ⓤ CPCD10/15/18-XW12F
ⓗ CPCD10/15/18-XW10F ⓘ CPQD10/15/18-XW21F

| 序号 Item | 物料码 Part No. | 名称 Description | 数量 Qty | 备注或适用车型 Remarks Or Serial No. |
|------------|---------------------|--------------------------------|-----------|----------------------------------|
| 27 | G000093-000006-00 | 垫圈 6 Washer 6 | 4 | |
| 28 | G005783-006012-01 | 螺栓 M6×12 Bolt M6×12 | 4 | |
| 29 | N030-110015-000 | 油封 Oil seal | 2 | |
| 30 | N030-110009-000 | 纸垫 Gasket | 2 | |
| 31 | XF150-110005-000 | 半轴 Half shaft | 2 | |
| 32 | N030-110016-000 | 压紧衬套 Clamp split-ring | 18 | |
| 33 | N030-110008-000 | 螺栓 Nut | 18 | |
| 34 | N163-220010-000 | 球形螺母 Nut | 12 | |
| 35 | G007244-000010-00 | 垫圈 10 Washer | 16 | |
| 36 | N163-110016-000 | 螺塞 Plug | 1 | |
| 37 | J000982-000020-00 | 垫圈 20 Washer | 1 | |
| 38 | G001235-007503P1-00 | O 形密封圈 75×3.1 O-ring 75×3.1 | 2 | |
| 39 | G000093-000016-00 | 垫圈 16 Washer 16 | 12 | |
| 40 | G006171-000016-02 | 螺母 M16×1.5 Nut M16×1.5 | 12 | |
| 41 | G000119-010030-00 | 销 10×30 Pin 10×30 | 2 | |

图 15 冷却油管总成
Fig.15 Cooling oil pipe assy

Ⓐ CPCD10/15/18-XW32F Ⓓ CPYD15/18-XW21F Ⓞ CPYD15/18-XW51F Ⓞ CPCD10/15/18-XW12F
Ⓗ CPCD10/15/18-XW10F ⓘ CPQD10/15/18-XW21F

| 序号 Item | 物料码 Part No. | 名称 Description | 数量 Qty | 备注或适用车型 Remarks Or Serial No. |
|------------|-------------------|-------------------------------|-----------|----------------------------------|
| 1 | XF250-120001-000 | 小管接头 Connector | 2 | |
| 2 | XF250-120002-000 | 回油管接头 Connector | 2 | |
| 3 | J000982-000016-00 | 垫圈 16 Washer | 1 | |
| 4-1 | XF250-120003-W00 | 胶管Φ 13, L=1200 Rubber pipe | 1 | Ⓐ Ⓗ |
| 4-1 | XF155-120003-W00 | 胶管Φ 13, L=2500 Rubber pipe | 1 | Ⓞ |
| 4-2 | XF151-120003-W00 | 胶管Φ 13, L=2200 Rubber pipe | 1 | Ⓓ ⓘ |
| 5-1 | XF250-120004-W00 | 胶管Φ 13, L=1500 Rubber pipe | 1 | Ⓐ Ⓗ |
| 5-1 | XF155-120004-W00 | 胶管Φ 13, L=2550 Rubber pipe | 1 | Ⓞ |
| 5-2 | XF151-120004-W00 | 胶管Φ 13, L=2700 Rubber pipe | 1 | Ⓓ ⓘ |
| 6 | Q672-23-G00 | 双钢丝式环箍 23 Clamp 23 | 4 | |
| 7 | GX160-510035-000 | 抱箍 Clamp | 1 | |
| 8 | XF250-120005-000 | 大管接头 Connector | 1 | |
| 9 | J000982-000020-00 | 垫圈 20 Washer | 1 | |
| 10 | G005783-008012-00 | 螺栓 M8×12 Bolt M8×12 | 3 | Ⓐ Ⓗ |
| 10 | G005783-008012-00 | 螺栓 M8×12 Bolt M8×12 | 4 | Ⓓ Ⓞ ⓘ |

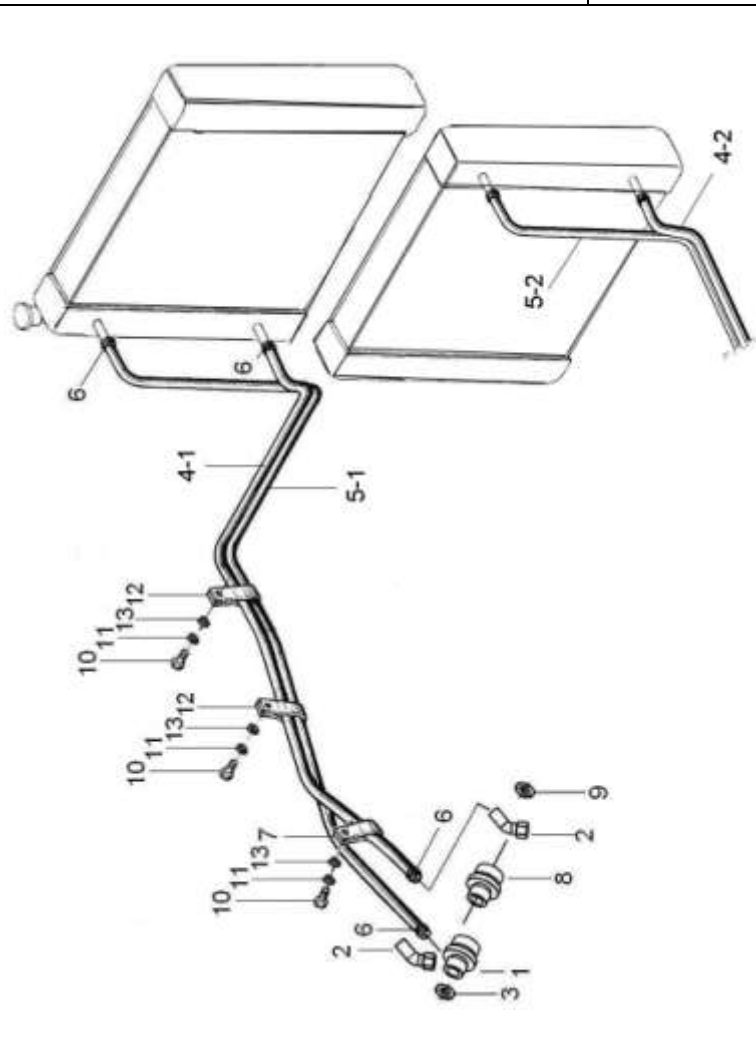


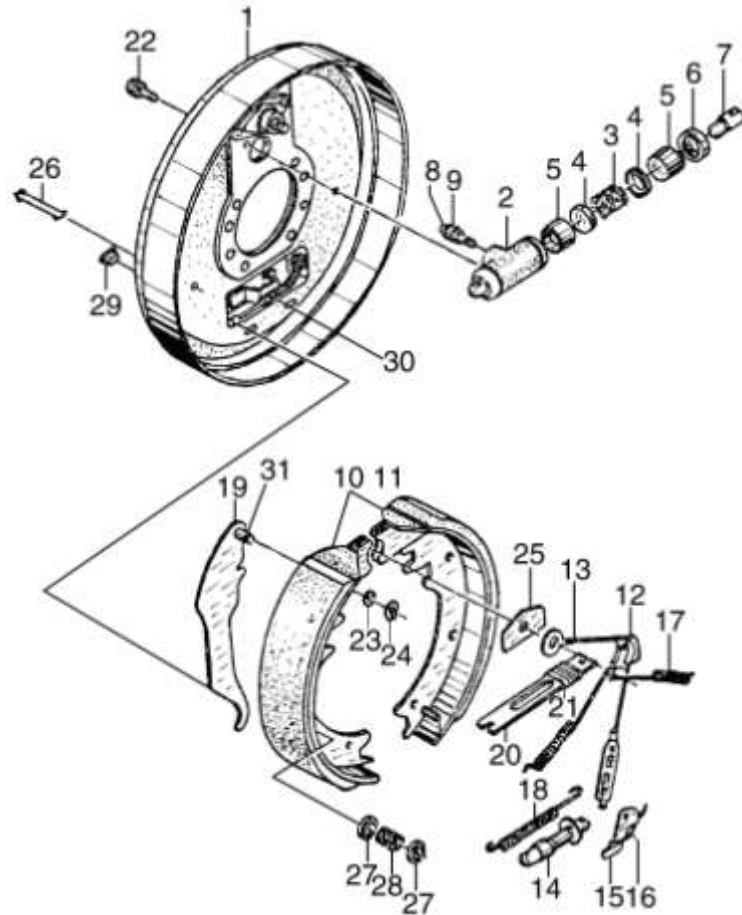
图 15 冷却油管总成
Fig.15 Cooling oil pipe assy

Ⓐ CPCD10/15/18-XW32F Ⓓ CPYD15/18-XW21F Ⓞ CPYD15/18-XW51F Ⓞ CPCD10/15/18-XW12F
Ⓗ CPCD10/15/18-XW10F ⓘ CPQD10/15/18-XW21F

| 序号 Item | 物料码 Part No. | 名称 Description | 数量 Qty | 备注或适用车型 Remarks Or Serial No. |
|------------|-------------------|-------------------|-----------|----------------------------------|
| 11 | G000093-000008-00 | 垫圈 8 Washer 8 | 3 | Ⓐ Ⓗ |
| 11 | G000093-000008-00 | 垫圈 8 Washer 8 | 4 | Ⓓ Ⓞ ⓘ |
| 12 | N160-120002-000 | 抱箍 Clamp | 2 | Ⓐ Ⓗ |
| 12 | N160-120002-000 | 抱箍 Clamp | 3 | Ⓓ ⓘ |
| 12 | N160-120002-000 | 抱箍 Clamp | 4 | Ⓞ |
| 13 | G0097P1-000012-00 | 垫圈 8 Washer 8 | 4 | |
| | | | | |
| | | | | |
| | | | | |
| | | | | |
| | | | | |
| | | | | |
| | | | | |
| | | | | |
| | | | | |
| | | | | |
| | | | | |
| | | | | |
| | | | | |

图 16 制动器
Fig.16 Wheel brake

Ⓐ CPCD10/15/18-XW32F Ⓓ CPYD15/18-XW21F Ⓔ CPYD15/18-XW51F Ⓒ CPCD10/15/18-XW12F
Ⓗ CPCD10/15/18-XW10F Ⓘ CPQD10/15/18-XW21F



| 序号 Item | 代号 Part No. | 名称 Description | 数量 Qty | 备注或适用车型 Remarks or Serial No. |
|------------|------------------|---------------------------------|-----------|----------------------------------|
| A1 | XF150-111000-000 | 左制动器总成 Brake assy,LH | 1 | |
| A2 | XF150-112000-000 | 右制动器总成 Brake assy,RH | 1 | |
| 1 | 21233-70010G-L | 左制动器底板总成 Brake plate assy,LH | 2 | 左, Left |
| 1 | 21233-70010G-R | 右制动器底板总成 Brake plate assy,RH | 2 | 右, Right |
| A3 | 21233-70080G | 制动分泵总成 Cylinder assy | 2 | 包含/INC:2-9 |
| 2 | NO PART NO. | 制动分泵缸 Cylinder | 2 | |
| 3 | NO PART NO. | 分泵弹簧 Spring | 2 | |
| 4 | 21233-70110G | 分泵皮碗 Cup | 4 | |
| 5 | NO PART NO. | 分泵活塞 Piston | 4 | |
| 6 | 21233-70130G | 制动分泵护罩 Boots | 4 | |
| 7 | NO PART NO. | 分泵活塞顶杆 Link,Conneeding | 4 | |
| 8 | NO PART NO. | 分泵放气螺钉帽 Cap bleader | 2 | |
| 9 | NO PART NO. | 分泵放气螺钉 Screw,Bleader | 2 | |
| 10 | 21233-70150G | 制动蹄带摩擦片总成 Brake shoe | 2 | 左右相同 Left & right same |
| 11 | 21233-70150G | 制动蹄带摩擦片总成 Brake shoe | 2 | 左右相同 Left & right same |

图 16 制动器
Fig.16 Wheel brake

Ⓐ CPCD10/15/18-XW32F Ⓓ CPYD15/18-XW21F Ⓔ CPYD15/18-XW51F Ⓒ CPCD10/15/18-XW12F
Ⓕ CPCD10/15/18-XW10F Ⓘ CPQD10/15/18-XW21F

| 序号 Item | 代号 Part No. | 名称 Description | 数量 Qty | 备注或适用车型 Remarks or Serial No. |
|------------|----------------|-------------------------------|-----------|----------------------------------|
| 12 | 21233-70330G | 导向块 Guide,cable | 2 | |
| 13 | 21233-70260G | 弹簧拉线装置 Spring&fitting assy | 2 | |
| 14 | 21233-70210G-L | 间隙调整器总成 (左) Adjuster (L) | 2 | 左旋 Left threads |
| 14 | 21233-70210G-R | 间隙调整器总成 (右) Adjuster (R) | 2 | 右旋 Right threads |
| 15 | 21233-70340G | 棘爪 Lever | 2 | |
| 16 | 21233-70360G-L | 扭簧 Spring | 2 | 左 Left |
| 16 | 21233-70360G-R | 扭簧 Spring | 2 | 右 Right |
| 17 | 21233-70320G | 制动蹄回位弹簧 Spring shoe | 4 | |
| 18 | 21233-70350G | 回位弹簧 Spring | 2 | |
| 19 | 21233-70370G-L | 左手制动拉杆 Brake lever,LH | 2 | 左 Left |
| 19 | 21233-70370G-R | 右手制动拉杆 Brake lever,RH | 2 | 右 Right |
| 20 | 21233-70380G | 手制动推杆 Strut | 2 | |
| 21 | 21233-70390G | 弹簧 Spring | 2 | |
| 22 | GB21-76-M6x16 | 螺栓 M6x16 Bolt M6x16 | 4 | |
| 22 | GB93-76-6 | 垫圈 6 Washer 6 | 4 | |

图 16 制动器
Fig.16 Wheel brake

Ⓐ CPCD10/15/18-XW32F Ⓓ CPYD15/18-XW21F Ⓔ CPYD15/18-XW51F Ⓒ CPCD10/15/18-XW12F
Ⓗ CPCD10/15/18-XW10F Ⓘ CPQD10/15/18-XW21F

| 序号 Item | 代号 Part No. | 名称 Description | 数量 Qty | 备注或适用车型 Remarks or Serial No. |
|------------|------------------|-------------------------------|-----------|----------------------------------|
| 23 | 24433-70160G | 弹性垫片 Washer | 2 | |
| 24 | 24433-70170G | 杆销挡圈 Retainer | 2 | |
| 25 | 21233-70410G | 导向板 Plate, Shoe guide | 2 | |
| 26 | 21233-70420G | 压簧拉杆 Pin, Shoe hold down | 4 | |
| 27 | 21233-70430G | 压簧座 Cup, Shoe hold down | 8 | |
| 28 | 21233-70440G | 压簧 Spring, Shoe hold down | 4 | |
| 29 | 21233-70040G | 胶堵 Plug, Rubber | 2 | |
| 30 | XF150-112100-000 | 左制动钢索总成 Cable, Control, LH | 1 | 左 Left |
| 30 | XF150-112300-000 | 右制动钢索总成 Cable, Control, RH | 1 | 右 Right |
| 31 | 21233-70400G | 销 Pin | 2 | |
| | | | | |
| | | | | |
| | | | | |
| | | | | |
| | | | | |
| | | | | |

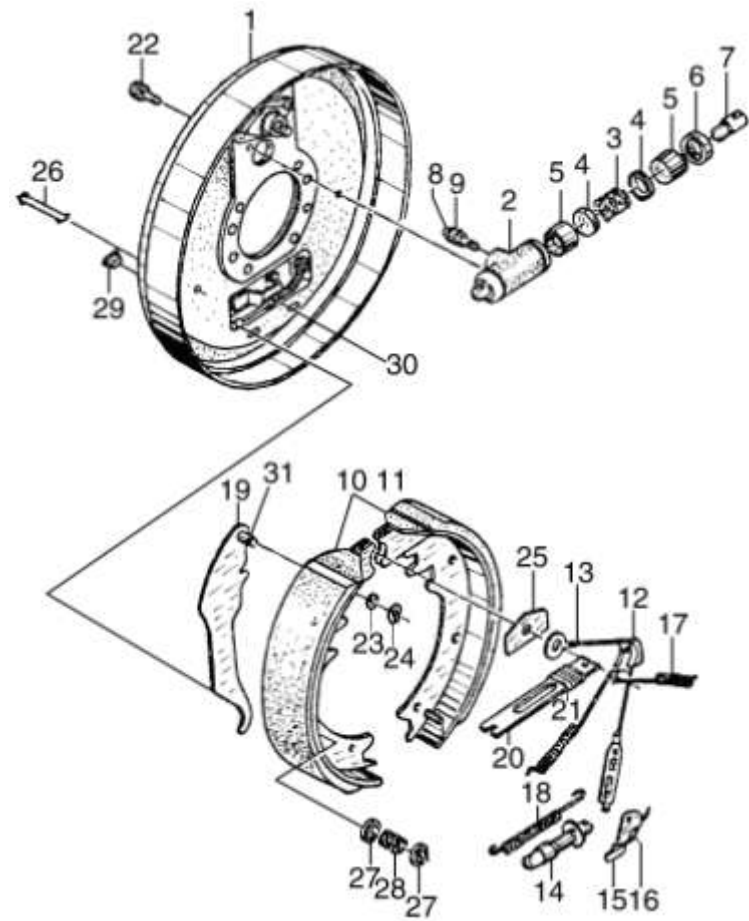


图 17 变速箱 (其 1)
Fig.17 Transmission (part-1)

1.0-3.5t
YQXF 系列液力传动变速箱 (绍兴)
YQXF Series Hydrodynamic Transmission Gearbox (SHAOXIN)

| 序号 Item | 物料码 Part No. | 名称 Description | 数量 Qty | 备注或适用车型 Remarks Or Serial No. |
|------------|-----------------------|------------------------------------|-----------|----------------------------------|
| 1 | YQXF15-6100 | 变矩器 Torque-converter | 1 | 1.0-1.8t |
| 1 | YQXF30-6100 | 变矩器 Torque-converter | 1 | 2.0-3.5t |
| 2 | YQX30H-6200 | 输入板组件 Import board | 1 | |
| 3 | GB5786-86-M10×1.25×16 | 螺栓 M10×1.25×16 Bolt M10×1.25×16 | 6 | |
| 4 | YQXF30-3001 | 泵体 Pump | 1 | |
| 5 | YQXF30-3200 | 主动齿轮组件 Drive gear | 1 | |
| 6 | YQXF30-3003 | 内齿轮 Inside gear | 1 | |
| 7 | TC 42×60×9 | 油封 Oil seal | 1 | |
| 8 | GB819-87-M6×12 | 十字槽沉头螺钉 M6×12 Bolt M6×12 | 1 | |
| 9 | YQXF30-3002 | 导轮座(定子) Idler pulley seat | 1 | |
| 10 | YQXF30-0003 | O 型圈 O-ring | 1 | |
| 11 | YQXF30-3101 | 密封环卡簧 Seal ring block | 1 | |
| 12 | YQXF30-3102 | 密封环 Seal ring | 1 | |
| 13 | YQXF30-0201 | 变矩器壳体 Case,tor-con | 1 | |
| 14 | GB93-87-10 | 弹簧垫圈 10 Washer 10 | 6 | |

图 17 变速箱 (其 1)
Fig.17 Transmission (part-1)

1.0-3.5t
YQXF 系列液力传动变速箱 (绍兴)
YQXF Series Hydrodynamic Transmission Gearbox (SHAOXIN)

| 序号 Item | 物料码 Part No. | 名称 Description | 数量 Qty | 备注或适用车型 Remarks Or Serial No. |
|------------|-------------------|---------------------------------|-----------|----------------------------------|
| 15 | YQXF30-0206 | 活塞 Piston | 1 | |
| 16 | YQXF30-0211 | 弹簧 (II) Spring (II) | 1 | |
| 17 | YQXF30-0207 | 弹簧 (I) Spring (I) | 1 | |
| 18 | YQXF30-0209 | 活塞 Piston | 2 | |
| 19 | YQXF30-0212 | 弹簧 (III) Spring (III) | 1 | |
| 20 | YQXF30-0202 | 盖 Cover | 1 | |
| 21 | YQXF30-0203 | 密封垫 Seal wash | 1 | |
| 22 | YQXF30-0204 | 油滤座 Strainer seat | 1 | |
| 23 | YQXF30-0205 | 油滤座纸垫 Strainer washer | 1 | |
| 24 | YQXF30-0240 | 粗滤器组件 Strainer | 1 | |
| 25 | YQXF30-0008 | 六角法兰螺栓 Bolt | 5 | |
| 26 | Q20-03-8×14×1.5 | 密封圈 8×14×1.5 Washer 8×14×1.5 | 5 | |
| 27 | GB70-85-M6×20 | 内六角螺钉 M6×20 Bolt M6×20 | 4 | |
| 28 | GB5783-86-M8×30 | 螺栓 M8×30 Bolt M8×30 | 9 | |
| 29 | JB/ZQ 4446-86 1/4 | 螺塞 Plug | 3 | |

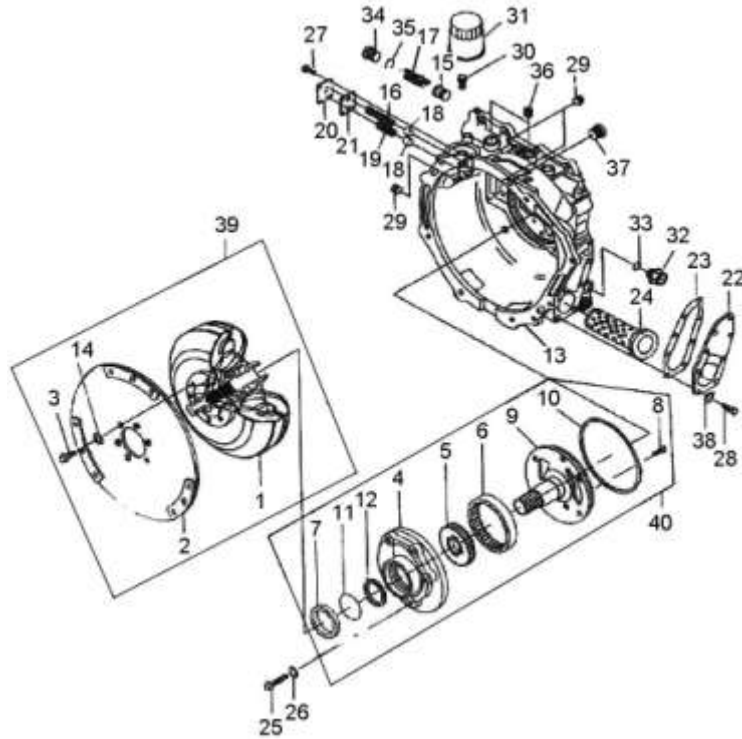


图 17 变速箱 (其 1)
Fig.17 Transmission (part-1)

1.0-3.5t
YQXF 系列液力传动变速箱 (绍兴)
YQXF Series Hydrodynamic Transmission Gearbox (SHAOXIN)

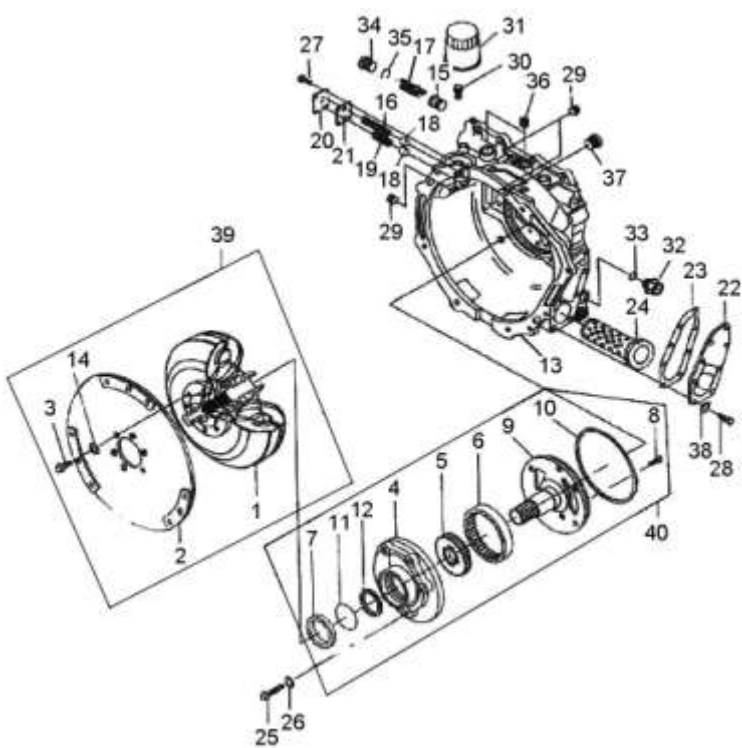
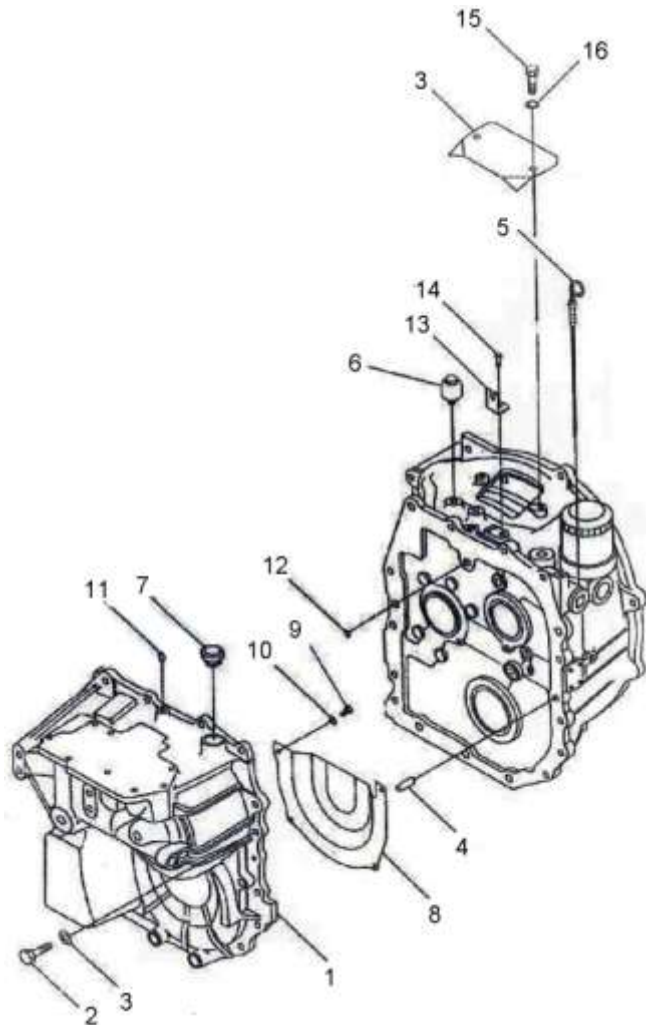
| | 序号 Item | 物料码 Part No. | 名称 Description | 数量 Qty | 备注或适用车型 Remarks Or Serial No. | |
|--|------------|-----------------------|-------------------------------|-----------|----------------------------------|--|
|  | 30 | YQXF30-0215 | 管接头 Tie-in | 1 | | |
| | 31 | YQX30-0300 | 滤油器 (II) Strainer (II) | 1 | | |
| | 32 | YQS30-0104 | 磁性螺塞 Plug | 1 | | |
| | 33 | Q20-03 22×26×2 | 密封圈 Seal wash | 1 | | |
| | 34 | YQXF30-0208 | 主压力阀螺塞 Pressure valve plug | 1 | | |
| | 35 | GB3452.1-86-21×3 | O 型圈 21×3 O-ring 21×3 | 1 | | |
| | 36 | JB/ZQ 4444-86 R3/8 | 螺塞 R3/8 Plug R3/8 | 2 | | |
| | 37 | JB/ZQ 4444-86 M22×1.5 | 内六角螺塞 M22×1.5 Plug M22×1.5 | 1 | | |
| | 38 | GB97-85-8 | 平垫圈 8 Washer 8 | 9 | | |
| | 39 | YQXF15-6000 | YJH265E 变矩器 YJH265E Torque | 1 | 1.0-1.8t | |
| | 39 | YQXF30-6000 | YJH265G 变矩器 YJH265G Torque | 1 | 2.0-3.5t | |
| | 40 | YQXF30-3000 | 油泵总成 Pump | 1 | | |
| | | | | | | |
| | | | | | | |

图 18 变速箱（其 2）
Fig. 18 Transmission (part-2)

1.0-3.5t
YQXF 系列液力传动变速箱 (绍兴)
YQXF Series Hydrodynamic Transmission Gearbox (SHAOXIN)



| 序号 Item | 物料码 Part No. | 名称 Description | 数量 Qty | 备注或适用车型 Remarks Or Serial No. |
|------------|---------------------|--------------------------------|-----------|----------------------------------|
| 1 | YQXF30-0101 | 壳体 Tor-con | 1 | |
| 1 | YQXF30-0106 | 衬套 Bush | 2 | |
| 2 | YQXF30-0007 | 六角法兰螺栓 Bolt | 17 | |
| 3 | YQXF30-0213 | 盖板 Cover board | 1 | |
| 4 | GB120-86-10x24 | 内螺纹圆柱销 10x24 Pin 10x24 | 2 | |
| 5 | YQXF30-0220 | 油尺 Dipstick | 1 | |
| 6 | YQXF30-0230 | 通气帽组件 Blowhole | 1 | |
| 7 | YQXF30-0104 | 加油口盖 Cover | 1 | |
| 8 | YQXF30-0102 | 挡油板 Blowd | 1 | |
| 9 | GB5783-86-M6x16 | 螺栓 M6x16 Bolt M6x16 | 4 | |
| 10 | GB97.1-85-6 | 平垫圈 6 Washerr6 | 4 | |
| 11 | JB/ZQ4446-86 R1/8 | 螺塞 R1/8 Plug R1/8 | 1 | |
| 12 | GB3452.1-87-16x2.65 | O 型圈 16x2.65 O-ring 16x2.65 | 1 | |
| 13 | YQXF30-0214 | 挡板 Board | 1 | |
| 14 | GB5783-86 | 螺栓 M8x20 Bolt M8x20 | 1 | |

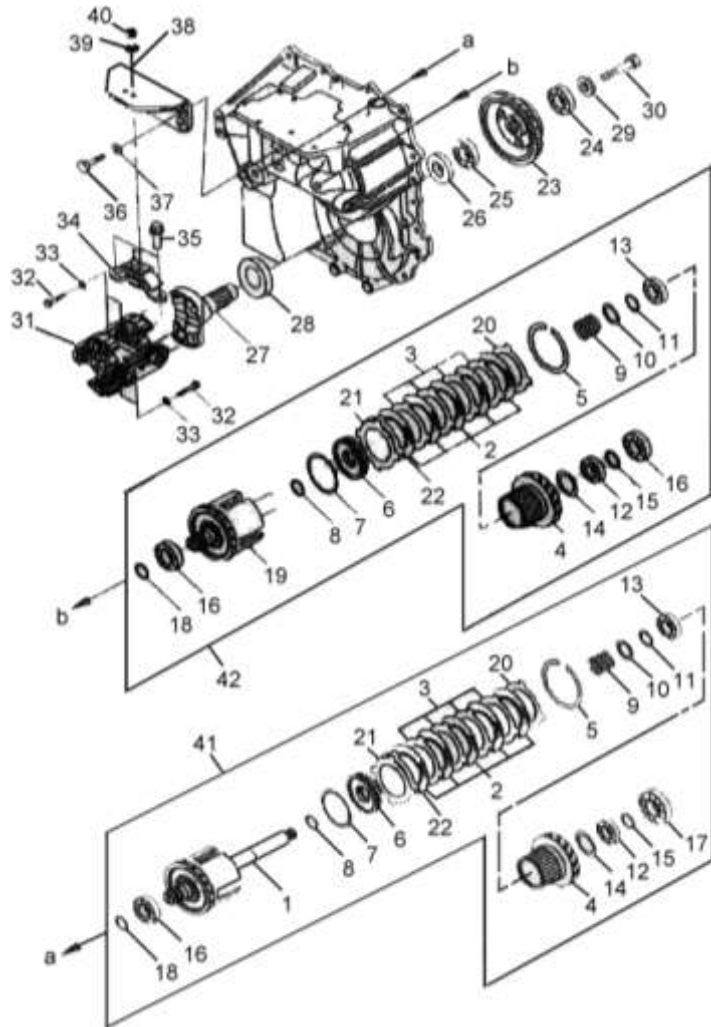
图 18 变速箱（其 2）
Fig. 18 Transmission (part-2)

1.0-3.5t
YQXF 系列液力传动变速箱 (绍兴)
YQXF Series Hydrodynamic Transmission Gearbox (SHAOXIN)

| 序号 Item | 物料码 Part No. | 名称 Description | 数量 Qty | 备注或适用车型 Remarks Or Serial No. |
|------------|-----------------|------------------------|-----------|----------------------------------|
| 15 | GB5783-86-M8×18 | 螺栓 M8×18 Bolt M8×18 | 2 | |
| 16 | GB97.1-82-8 | 平垫圈 8 Pin 8 | 2 | |
| | | | | |
| | | | | |
| | | | | |
| | | | | |
| | | | | |
| | | | | |
| | | | | |
| | | | | |
| | | | | |
| | | | | |
| | | | | |
| | | | | |
| | | | | |
| | | | | |
| | | | | |
| | | | | |
| | | | | |
| | | | | |
| | | | | |
| | | | | |
| | | | | |
| | | | | |

图 19 变速箱 (其 3)
Fig. 19 Transmission (part-3)

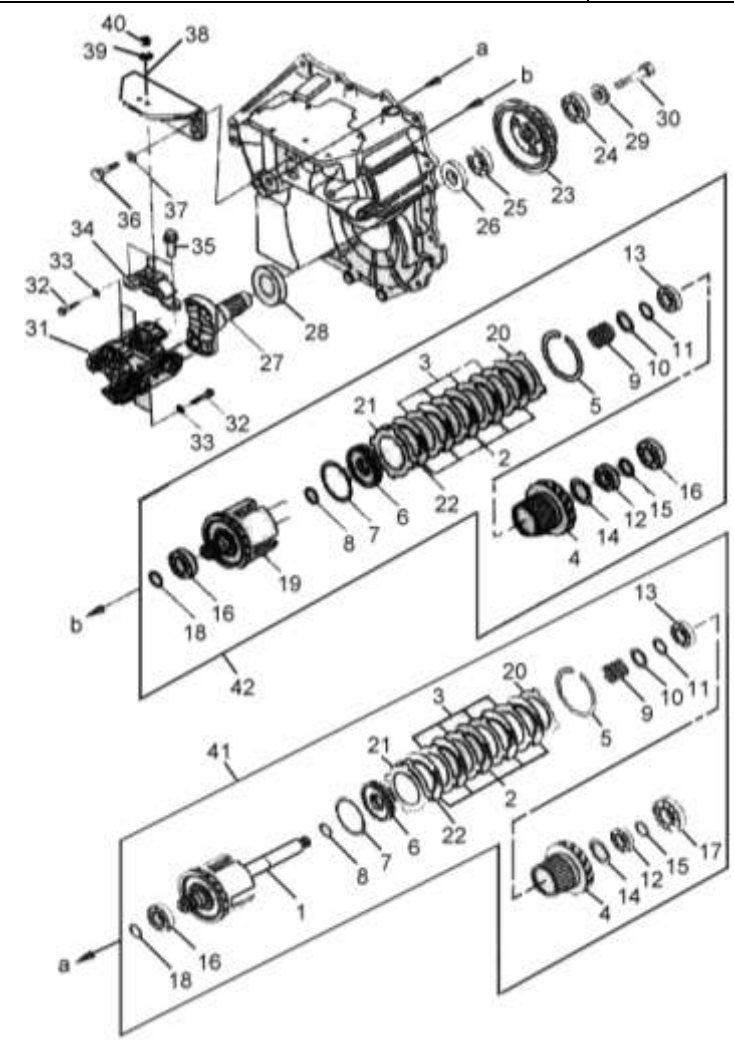
1.0-3.5t
YQXF 系列液力传动变速箱 (绍兴)
YQXF Series Hydrodynamic Transmission Gearbox (SHAOXIN)



| 序号 Item | 物料码 Part No. | 名称 Description | 数量 Qty | 备注或适用车型 Remarks Or Serial No. |
|------------|-----------------|------------------------------------|-----------|----------------------------------|
| 1 | YQXF30-1100 | 输入轴组件 Input axes | 1 | |
| 2 | YQXF30-1200 | 内摩擦片 Disk friction | 10 | 1.0-1.8t 数量 8 1.0-1.8t Qty 8 |
| 3 | YQXF30-1007 | 隔片 Spacer | 8 | 1.0-1.8t 数量 6 1.0-1.8t Qty 6 |
| 4 | YQXF30-1001 | 离合器齿轮 Clutch Gear | 2 | |
| 5 | YQX30-1014 | 卡簧 Block | 2 | |
| 6 | YQXF30-1300 | 活塞组件 Piston | 2 | |
| 7 | YQXF30-1009 | 活塞环 Piston ring | 2 | |
| 8 | YQS30-1002 | 密封环 Seal ring | 2 | |
| 9 | YQXF30-1005 | 弹簧 Spring | 2 | |
| 10 | YQXF30-1004 | 弹簧座 Spring seat | 2 | |
| 11 | YQXF30-1003 | 轴用挡圈 Snap ring external | 2 | |
| 12 | GB276-6006 | 轴承 Bearing | 2 | |
| 13 | GB276-6006RZ | 轴承 Bearing | 1 | |
| 14 | GB893.1-86-55 | 孔用弹性挡圈 55 Snap ring exterior 55 | 10 | |
| 15 | YQXF30-1002 | 隔圈 Spacer | 8 | |

图 19 变速箱 (其 3)
Fig. 19 Transmission (part-3)

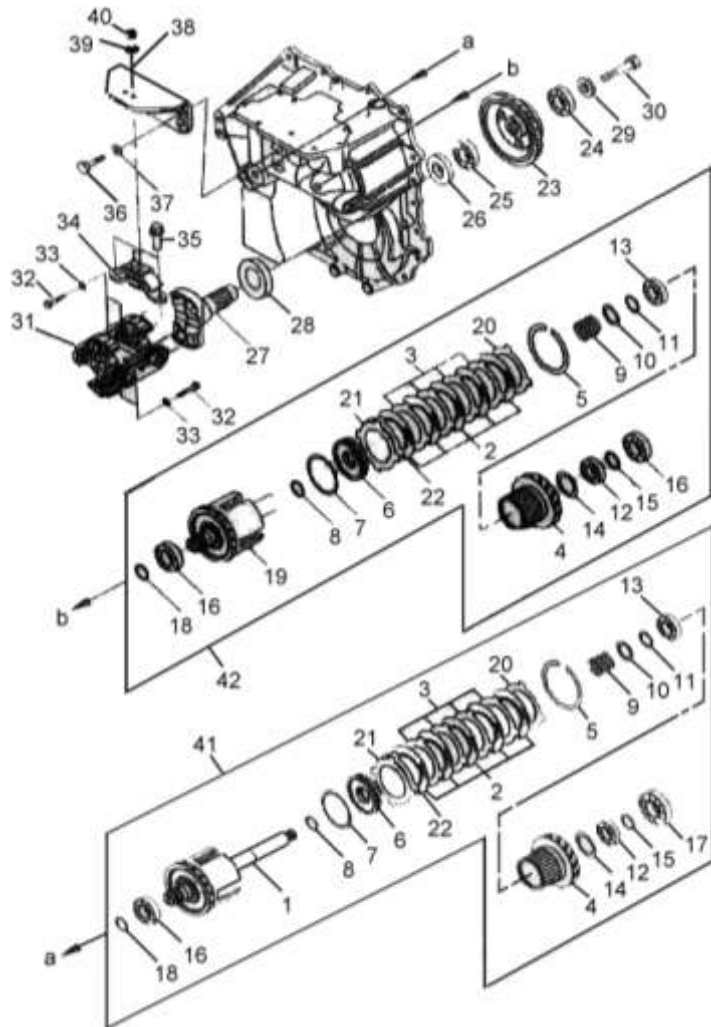
1.0-3.5t
YQXF 系列液力传动变速箱 (绍兴)
YQXF Series Hydrodynamic Transmission Gearbox (SHAOXIN)



| 序号 Item | 物料码 Part No. | 名称 Description | 数量 Qty | 备注或适用车型 Remarks Or Serial No. |
|------------|------------------|------------------------------|-----------|----------------------------------|
| 16 | GB276-6206 | 轴承 Bearing | 2 | |
| 17 | GB276-6306 | 轴承 Bearing | 2 | |
| 18 | YQX30-1006 | 密封环 (A) Seal ring(A) | 2 | |
| 19 | YQXF30-5100 | 中间轴组件 Middle axes | 2 | |
| 20 | YQXF30-1006 | 端板 Board | 2 | |
| 21 | YQXF15-1002 | 碟形板 Dish plate | 2 | 1.0-1.8t |
| 22 | YQXF30-1008 | 垫板 Washer board | 2 | |
| 23 | YQXF30-0001 | 输出齿轮 Out put gear | 2 | |
| 24 | GB276-94-6306 | 轴承 6306 Bearing 6306 | 2 | |
| 25 | GB276-94-6307 | 轴承 6307 Bearing 6307 | 1 | |
| 26 | YQXF30-0400 | 输出法兰油封 Output flange seal | 1 | |
| 27 | YQXF30-0301 | 输出法兰 Output flange | 1 | |
| 28 | YQXF30-0302 | 防尘罩 Dustproof cover | 1 | |
| 29 | YQXF30-0002 | 垫圈 Washer | 1 | |
| 30 | GB5782-86-M12x95 | 螺栓 M12x95 Bolt M12x95 | 1 | |

图 19 变速箱 (其 3)
Fig. 19 Transmission (part-3)

1.0-3.5t
YQXF 系列液力传动变速箱 (绍兴)
YQXF Series Hydrodynamic Transmission Gearbox (SHAOXIN)



| 序号 Item | 物料码 Part No. | 名称 Description | 数量 Qty | 备注或适用车型 Remarks Or Serial No. |
|------------|--------------------|-----------------------------|-----------|----------------------------------|
| 31 | YQXF30-7000 | 联轴器总成 Yoke coupling | 1 | |
| 32 | YQXF30-0005 | 螺栓 Bolt | 8 | |
| 33 | GB93-87-10 | 弹簧垫圈 10 Washer 10 | 8 | |
| 34 | YQXF30-2070 | 支座组件 Seat assy | 1 | |
| 34 | YQXF30-2003 | 固定架 Fastness seat | 1 | |
| 35 | YQXF30-2002 | 螺栓 Bolt | 2 | |
| 36 | YQXF30-0105 | 螺栓 Bolt | 4 | |
| 37 | GB97.1-85-12 | 平垫圈 12 Washer 12 | 4 | |
| 38 | YQXF30-0103 | 支架 Plank | 1 | |
| 39 | GB97-85-12 | 垫圈 12 Washer 12 | 2 | |
| 40 | GB6185-85-M12x1.25 | 六角锁紧螺母 Nut M12x1.25 | 2 | |
| 41 | YQXF15-1000 | 输入轴总成(输入离合器) input axes | 1 | 1.0-1.8t |
| 41 | YQXF30-1000 | 输入轴总成(输入离合器) input axes | 1 | 2.0-3.5t |
| 42 | YQXF15-5000 | 中间轴总成(中间离合器) middle axes | 1 | 1.0-1.8t |
| 42 | YQXF30-5000 | 中间轴总成(中间离合器) middle axes | 1 | 2.0-3.5t |

图 20 电磁控制操纵阀
Fig. 20 Electro-hydraulic operating valve

1.0-3.5t
YQXF 系列液力传动变速箱 (绍兴)
YQXF Series Hydrodynamic Transmission Gearbox (SHAOXIN)

| 序号 Item | 物料码 Part No. | 名称 Description | 数量 Qty | 备注或适用车型 Remarks Or Serial No. |
|------------|-----------------|---------------------------------|-----------|----------------------------------|
| 1 | YQXF30-4101 | 阀体 Body, valve | 1 | |
| 2 | YQXF30-4102 | 微动阀芯 Inching plunger | 1 | |
| 3 | YQXF30-4103 | 阀套 Valve cover | 1 | |
| 4 | YQXF30-4104 | 定位弹簧 Orientation spring | 1 | |
| 5 | YQXF30-4105 | 弹簧座 Spring seat | 1 | |
| 6 | GB879-86-3×16 | 弹性圆柱销 3×16 Pin 3×16 | 1 | |
| 7 | YQXF30-4106 | 复位弹簧 Displasis spring | 1 | |
| 8 | YQXF30-4107 | 调节阀芯 Adjust plunger | 1 | |
| 9 | YQXF30-4109 | 调节阀内簧 Adjust Internal spring | 1 | |
| 10 | YQXF30-4108 | 调节阀外簧 Adjust external spring | 1 | |
| 11 | YQXF30-4111 | 限位销 Limit pin | 1 | |
| 12 | YQXF30-4112 | 盖板 Board | 1 | |
| 13 | YQXF30-4113 | 密封垫 Seal washer | 1 | |
| 14 | GB82-86-M6×16 | 螺栓 M6×16 Bolt M6×16 | 6 | |
| 15 | YQXF30-4115 | 柱塞 Plug | 1 | |

图 20 电磁控制操纵阀
Fig. 20 Electro-hydraulic operating valve

1.0-3.5t
YQXF 系列液力传动变速箱 (绍兴)
YQXF Series Hydrodynamic Transmission Gearbox (SHAOXIN)

| 序号 Item | 物料码 Part No. | 名称 Description | 数量 Qty | 备注或适用车型 Remarks Or Serial No. |
|------------|------------------|--------------------------------|-----------|----------------------------------|
| 16 | YQXF30-4116 | 螺塞 M10×1 Plug M10×1 | 4 | |
| 17 | Q20-03-10×16×1 | 密封垫 10×16×1 Seal washer | 4 | |
| 18 | YQXF30-4114 | 阻尼塞 Plug | 1 | |
| 19 | YQXF30-4140 | 骨架油封 10×22×7 Oil seal | 1 | |
| 20 | YQX30D-4200 | 电磁换向阀 Electromagnetic valve | 1 | |
| 21 | GB70-85-M5×45 | 内六角螺钉 M5×45 Bolt M5×45 | 4 | |
| 22 | GB5783-86-M8×35 | 螺栓 M8×35 Bolt M8×35 | 2 | |
| 23 | GB5782-86-M8×60 | 螺栓 M8×60 Bolt M8×60 | 5 | |
| 24 | GB97-85-8 | 平垫圈 8 Washer 8 | 7 | |
| 25 | YQXF30-0004 | 密封垫 Seal washer | 1 | |
| 26 | YQXF30-4150 | 包边滤片 Colander | 1 | |
| 27 | GB1235-76-12×1.9 | O 型密封圈 12×1.9 O-ring 12×1.9 | 1 | |
| 28 | YQXF30-4100 | 操纵阀总成 Operating Valve | 1 | |
| | | | | |

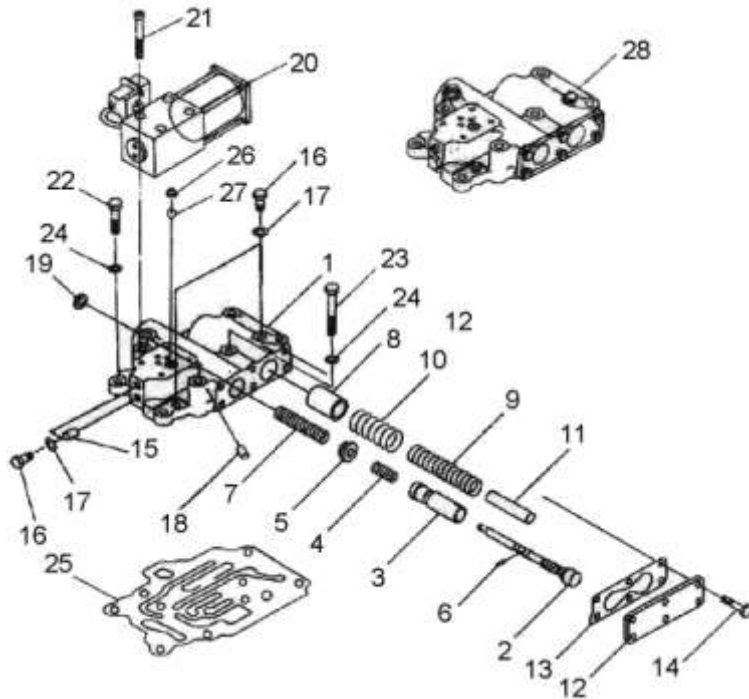


图 21 减速器总成
Fig21 Reduction assy

1.0-3.5t
YQXF 系列液力传动变速箱 (绍兴)
YQXF Series Hydrodynamic Transmission Gearbox (SHAOXIN)

| 序号 Item | 物料码 Part No. | 名称 Description | 数量 Qty | 备注或适用车型 Remarks Or Serial No. |
|------------|------------------|----------------------------|-----------|--|
| 1 | YQXF15-2201 | 差速器座 Body, valve | 1 | 1.0-1.8t 1,2 成对购买 1.0-1.8t 1,2 Paired buy |
| 1 | YQXF20-2201 | 差速器座 Body, valve | 1 | 2.0-2.5t 1,2 成对购买 2.0-2.5t 1,2 Paired buy |
| 1 | YQXF30-2201 | 差速器座 Body, valve | 1 | 3.0-3.5t 1,2 成对购买 3.0-3.5t 1,2 Paired buy |
| 2 | YQXF30-2202 | 轴承座 Gear seat | 2 | 1、2 成对购买 1、2 Paired buy |
| 3 | YQXF30-2203 | 螺栓 Bolt | 4 | |
| 4 | YQXF30-2041 | 轴承座 Gear seat | 1 | 3-3.5 t |
| 5 | YQXF30-2110 | 螺栓 Bolt | 3 | 3-3.5 t |
| 6 | YQXF30-2109 | 螺栓 Bolt | 5 | 3-3.5 t |
| 7 | YQXF30-2001 | 差速器盖 Differential cover | 1 | |
| 8 | GB5782-86-M10x55 | 螺栓 M10x55 Bolt M10x55 | 2 | |
| 9 | GB5782-86-M10x70 | 螺栓 M10x70 Bolt M10x70 | 8 | |
| 10 | GB93-87-10 | 垫片 10 Washer10 | 10 | |
| 11 | GB120-86-12x28 | 内螺纹圆柱销 12x28 Pin12x28 | 2 | |
| 12 | YQXF15-2031 | 主动齿轮 Initiative | 1 | 1.0-1.8t 12,19 成对购买 1.0-1.8t 12,19 Paired buy |
| 12 | YQXF30-2031 | 主动齿轮 Initiative | 1 | 2.0-3.5t 12,19 成对购买 2.0-3.5t 12,19 Paired buy |

图 21 减速器总成
Fig21 Reduction assy

1.0-3.5t
YQXF 系列液力传动变速箱 (绍兴)
YQXF Series Hydrodynamic Transmission Gearbox (SHAOXIN)

| 序号 Item | 物料码 Part No. | 名称 Description | 数量 Qty | 备注或适用车型 Remarks Or Serial No. |
|------------|-----------------|----------------------------------|-----------|--|
| | | | | |
| 13 | YQXF30-2050 | 油封 Oil seal | 1 | |
| 14 | GB276-94-6210 | 轴承 6210 Gear 6210 | 1 | |
| 15 | GB276-94-6211 | 轴承 6211 Gear 6211 | 1 | |
| 16 | YQXF30-2008 | 锁紧螺母 Lock nut | 1 | |
| 17 | YQXF30-2011 | 端盖 Cover | 1 | |
| 18 | GB97-85-8 | 垫片 8 Washer 8 | 4 | |
| 19 | YQXF15-2003 | 从动齿轮 Bevel gear | 1 | 1.0-1.8t 12,19 成对购买 1.0-1.8t 12,19 Paired buy |
| 19 | YQXF30-2005 | 从动齿轮 Bevel gear | 1 | 2.0-3.5t 12,19 成对购买 2.0-3.5t 12,19 Paired buy |
| 20 | GB297-94 30310 | 轴承 30310 Bearing 30310 | 1 | |
| 21 | GB297-94 30309 | 轴承 30309 Bearing 30309 | 1 | |
| 22 | YQXF30-2006 | 调整垫 Adjust washer | 按需 | |
| 23 | YQXF30-2007 | 调整垫 Adjust washer | 按需 | |
| 24 | YQXF15-2111 | 差速器壳-左 Differential hull-left | 1 | 1.0-1.8t 24,25 成对购买 1.0-1.8t 24,25 Paired buy |
| 24 | YQXF20-2111 | 差速器壳-左 Differential hull-left | 1 | 2.0-2.5t 24,25 成对购买 2.0-2.5t 24,25 Paired buy |
| 24 | YQXF30-2111 | 差速器壳-左 Differential hull-left | 1 | 3.0-3.5t 24,25 成对购买 3.0-3.5t 24,25 Paired buy |

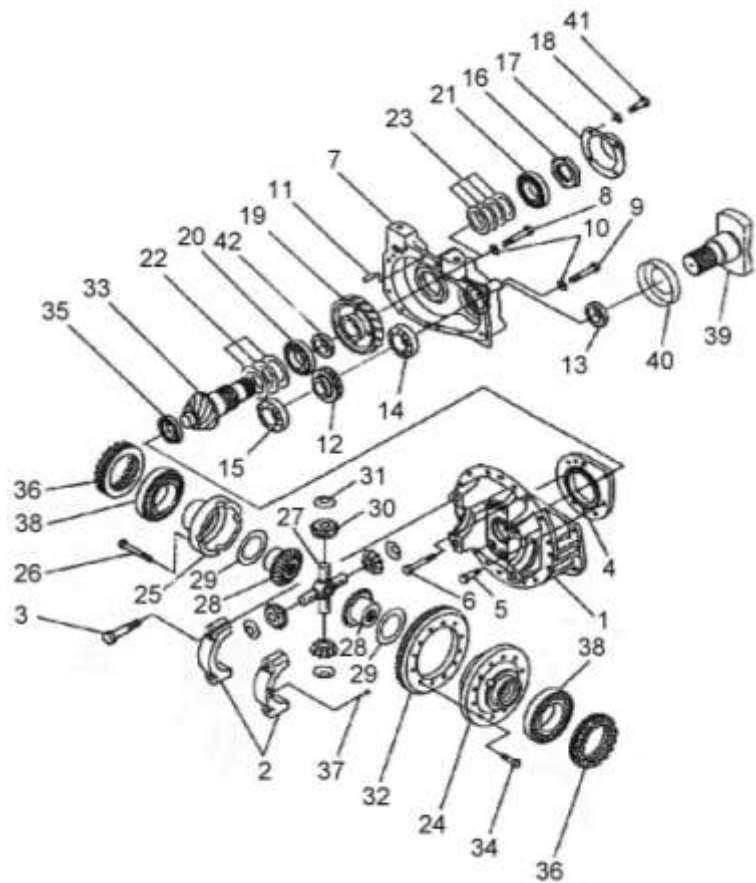


图 21 减速器总成
Fig21 Reduction assy

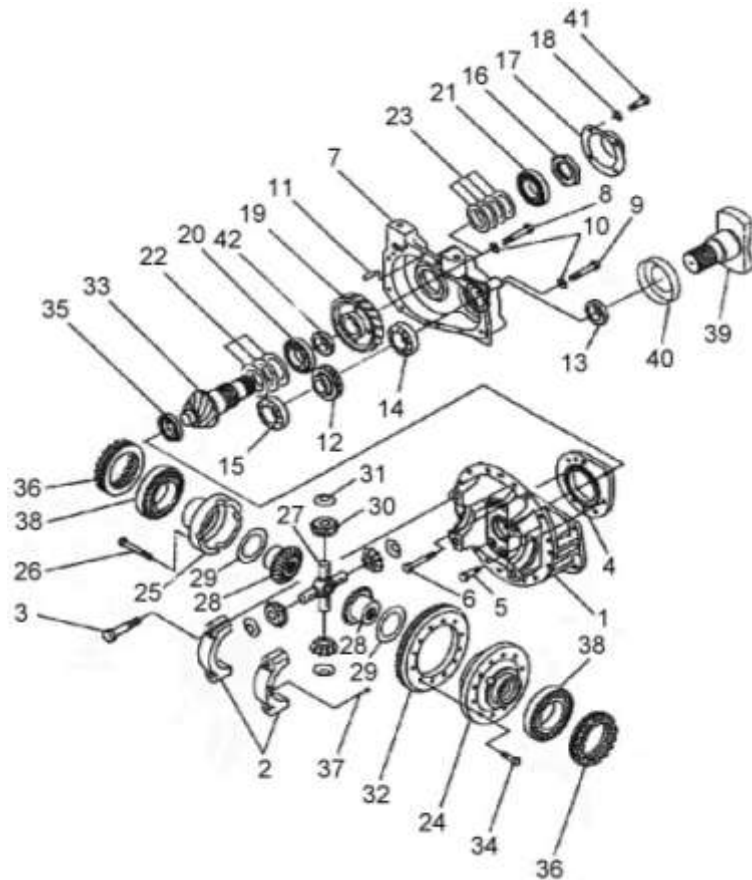
1.0-3.5t
YQXF 系列液力传动变速箱 (绍兴)
YQXF Series Hydrodynamic Transmission Gearbox (SHAOXIN)

| 序号 Item | 物料码 Part No. | 名称 Description | 数量 Qty | 备注或适用车型 Remarks Or Serial No. |
|------------|-----------------|-----------------------------------|-----------|--|
| 25 | YQXF20-2112 | 差速器壳-右 Differential hull-right | 1 | 1.0-2.5t 24,25 成对购买 1.0-2.5t 24,25 Paired buy |
| 25 | YQXF30-2112 | 差速器壳-右 Differential hull-right | 1 | 3.0-3.5t 24,25 成对购买 3.0-3.5t 24,25 Paired buy |
| 26 | YQXF30-2108 | 螺栓 Bolt | 16 | |
| 27 | YQXF20-2107 | 十字轴 Shaft-pinion mate | 1 | 1.0-2.5t |
| 27 | YQXF30-2107 | 十字轴 Shaft-pinion mate | 1 | 3.0-3.5t |
| 28 | YQXF20-2101 | 半轴齿轮 Side gear | 2 | 1.0-2.5t |
| 28 | YQXF30-2101 | 半轴齿轮 Side gear | 2 | 3.0-3.5t |
| 29 | YQXF20-2105 | 垫圈 Washer | 2 | 1.0-2.5t |
| 29 | YQXF30-2105 | 垫圈 Washer | 2 | 3.0-3.5t |
| 30 | YQXF20-2106 | 行星齿轮 Gear-pinion | 4 | 1.0-2.5t |
| 30 | YQXF30-2106 | 行星齿轮 Gear-pinion | 4 | 3.0-3.5t |
| 31 | YQXF20-2104 | 止推垫圈 Cease washer | 4 | 1.0-2.5t |
| 31 | YQXF30-2104 | 止推垫圈 Cease washer | 4 | 3.0-3.5t |
| 32 | YQXF15-2101 | 从动螺旋伞齿轮 Bevel gear,driven | 1 | 1.0-1.8t 32,33 成对购买 1.0-1.8t 32,33 Paired buy |
| 32 | YQXF20-2103 | 从动螺旋伞齿轮 Bevel gear,driven | 1 | 2.0-2.5t 32,33 成对购买 2.0-2.5t 32,33 Paired buy |

图 21 减速器总成
Fig21 Reduction assy

1.0-3.5t
YQXF 系列液力传动变速箱 (绍兴)
YQXF Series Hydrodynamic Transmission Gearbox (SHAOXIN)

| 序号 Item | 物料码 Part No. | 名称 Description | 数量 Qty | 备注或适用车型 Remarks Or Serial No. |
|------------|-------------------|-------------------------------|-----------|--|
| 32 | YQXF30-2103 | 从动螺旋伞齿轮 Bevel gear,driven | 1 | 3.0-3.5t 32,33 成对购买 3.0-3.5t 32,33 Paired buy |
| 33 | YQXF15-2001 | 主动螺旋伞齿轮 Driving bevel gear | 1 | 1.0-1.8t 32,33 成对购买 1.0-1.8t 32,33 Paired buy |
| 33 | YQXF20-2001 | 主动螺旋伞齿轮 Driving bevel gear | 1 | 2.0-2.5t 32,33 成对购买 2.0-2.5t 32,33 Paired buy |
| 33 | YQXF30-2061 | 主动螺旋伞齿轮 Driving bevel gear | 1 | 3.0-3.5t 32,33 成对购买 3.0-3.5t 32,33 Paired buy |
| 34 | YQXF30-2102 | 螺栓 Bolt | 12 | |
| 35 | GB283-94-NUP2205E | 轴承 NUP2205E GearNUP2205E | 1 | 3-3.5 t |
| 36 | YQXF30-2004 | 调整螺母 Adjust nut | 2 | |
| 37 | GB91-86-8x50 | 开口销 8x50 Pin 8x50 | 2 | |
| 38 | GB297-94-302015 | 轴承 302015 Bearing 302015 | 2 | |
| 39 | YQXF30-2021 | 输入法兰 Flange | 1 | |
| 40 | YQXF30-2022 | 防尘罩 Dustproof cover | 1 | |
| 41 | GB5783-86-M8x20 | 螺栓 M8x20 Washer M8x20 | 4 | |
| 42 | YQXF15-2002 | 衬套 Bush | 1 | 1.0-1.8t |
| 42 | YQXF20-2002 | 衬套 Bush | 1 | 2.0-3.5t |
| | | | | |



| ① CPCD10/15/18-XW32F ② CPCD10/15/18-XW32B ③ CPYD15/18-XW21F ④ CPYD15/18-XW51F ⑤ CPYD15/18-XW21B ⑥ CPYD15/18-XW51B ⑦ CPCD10/15/18-XW12F ⑧ CPCD10/15/18-XW10F ⑨ CPQD10/15/18-XW21F | | | | |
|--|----------------------|-----------------------------|-----------|--|
| 序号 Item | 物料码 Part No. | 名称 Description | 数量 Qty | 备注或适用车型 Remarks Or Serial No. |
| 1 | J000982-000022-00 | 垫圈 22 Washer | 1 | 图 2/图 14 驱动桥总成 (序号 4) Fig.2/Fig.14 Drive axle assy (No.4) |
| 2 | J000982-000016-00 | 垫圈 16 Washer | 1 | 图 2/图 14 驱动桥总成 (序号 5) Fig.2/Fig.14 Drive axle assy (No.5) |
| 3 | HG40692-100014012-01 | 油封 SD100×140×12 Oil seal | 2 | 图 2/图 14 驱动桥总成 (序号 22) Fig.2/Fig.14 Drive axle assy (No.22) |
| 4 | HG40692-048006212-00 | 油封 PD45×62×12 Oil seal | 2 | 图 2/图 14 驱动桥总成 (序号 29) Fig.2/Fig.14 Drive axle assy (No.29) |
| 5 | N163-1100018-000 | 纸垫 Gasket | 2 | 图 2/图 14 驱动桥总成 (序号 30) Fig.2/Fig.14 Drive axle assy (No.30) |
| 6 | J000982-000020-00 | 垫圈 20 Washer | 1 | 图 2/图 14 驱动桥总成 (序号 37) Fig.2/Fig.14 Drive axle assy (No.37) |

| 变速箱密封（修理）工具包 Transmission repair kits | | 1.0-3.5t YQXF 系列液力传动变速箱 (绍兴) 1.0-3.5t YQXF Series Hydrodynamic Transmission Gearbox (SHAOXIN) | | |
|--|---------------------|--|-----------|--|
| 序号 Item | 物料码 Part No. | 名称 Description | 数量 Qty | 备注或适用车型 Remarks Or Serial No. |
| 1 | TC 42×60×9 | 油封 Oil seal | 1 | 图 17 变速箱（其 1）（序号 7） Fig.17 Transmission (Part-1) (No. 7) |
| 2 | YQXF30-0003 | O 型圈 O-ring | 1 | 图 17 变速箱（其 1）（序号 10） Fig.17 Transmission (Part-1) (No. 10) |
| 3 | YQXF30-3102 | 密封环 Airproof ring | 1 | 图 17 变速箱（其 1）（序号 12） Fig.17 Transmission (Part-1) (No. 12) |
| 4 | YQXF30-0203 | 密封封 Airproof ring | 1 | 图 17 变速箱（其 1）（序号 21） Fig.17 Transmission (Part-1) (No. 21) |
| 5 | YQXF30-0205 | 油滤座纸垫 Strainer seat washer | 1 | 图 17 变速箱（其 1）（序号 23） Fig.17 Transmission (Part-1) (No. 23) |
| 6 | YQXF30-0240 | 粗滤器组件 Strainer assy | 1 | 图 17 变速箱（其 1）（序号 24） Fig.17 Transmission (Part-1) (No. 24) |
| 7 | YQX30-0300 | 滤油器(II) Strainer(II) | 1 | 图 17 变速箱（其 1）（序号 31） Fig.17 Transmission (Part-1) (No. 31) |
| 8 | GB3452.1-82-21×3 | O 型圈 21×3 O-ring 21×3 | 1 | 图 17 变速箱（其 1）（序号 35） Fig.17 Transmission (Part-1) (No. 35) |
| 9 | GB3452.1-82-16×2.65 | O 型圈 16×2.65 O-ring 16×2.65 | 2 | 图 18 变速箱（其 2）（序号 12） Fig.18 Transmission (Part-2) (No. 12) |
| 10 | YQXF30-1009 | 活塞环 Piston ring | 2 | 图 19 变速箱（其 3）（序号 7） Fig.19 Transmission (Part-3) (No. 7) |
| 11 | YQS30-1002 | 密封环 Airproof ring | 2 | 图 19 变速箱（其 3）（序号 8） Fig.19 Transmission (Part-3) (No. 8) |
| 12 | YQX30-1006 | 密封环(A) Airproof ring(A) | 5 | 图 19 变速箱（其 3）（序号 18） Fig.19 Transmission (Part-3) (No. 18) |
| 13 | YQXF30-0400 | 输出法兰油封 Output flange oil seal | 1 | 图 19 变速箱（其 3）（序号 26） Fig.19 Transmission (Part-3) (No. 26) |
| 14 | YQXF30-0004 | 密封垫 Airproof Washer | 1 | 图 20 电磁控制操纵阀（序号 25） Fig.20 Electro-hydraulic operating valve (No. 25) |
| 15 | GB1235-76-12×1.9 | O 型圈 12×1.9 O-ring 12×1.9 | 1 | 图 20 电磁控制操纵阀（序号 27） Fig.20 Electro-hydraulic operating valve (No. 27) |
| 16 | YQXF30-2050 | 油封 Oil seal | 1 | 图 21 减速度器总成（序号 13） Fig.21 Reduction assy (No. 13) |

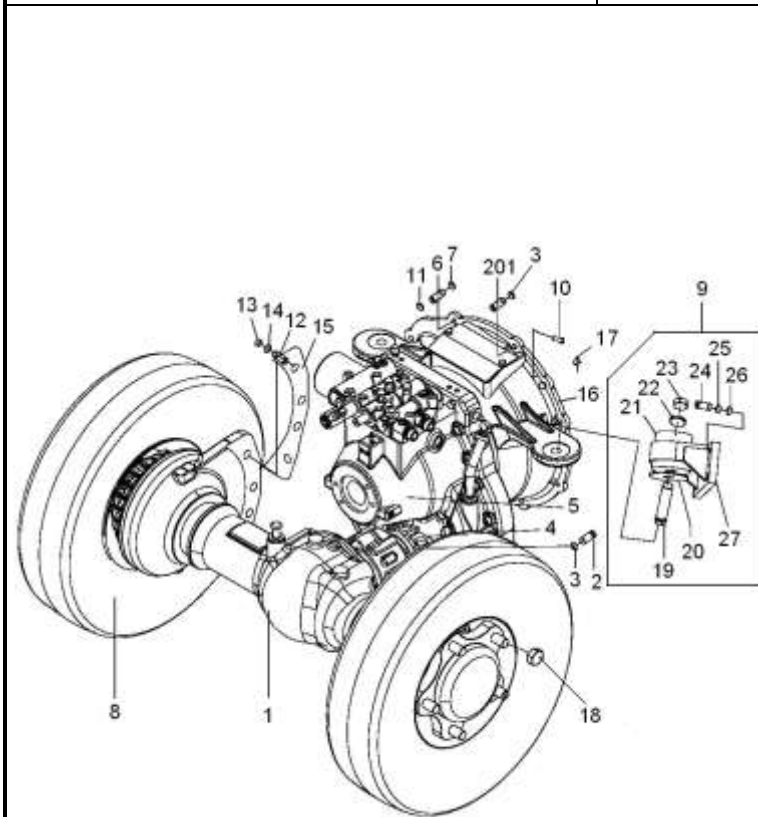
图 22 传动系统
Fig.22 Driving system

© CPCD10/15/18-XW32M ⑤ CPYD15/18-XW21M ⑥ CPYD15/18-XW51M

| 序号 Item | 物料码 Part NO. | 名称 Description | 数量 Qty | 备注或适用车型 Remarks Or Serial NO. |
|------------|-----------------------------------|-------------------------------------|-----------|----------------------------------|
| 1 | XM150-110000-G00 | 驱动桥 Drive axle | 1 | |
| 2 | G005785-010035-00 | 螺栓 M10×1.25×35 Bol M10×1.25×35 | 4 | |
| 201 | G005786-010035-00 | 螺栓 M10×1.25×35 Bol M10×1.25×35 | 8 | © |
| 201 | G005783-010035-00 | 螺栓 M10×35 Bol M10×35 | 10 | ⑤ <2011-12-01 |
| 201 | G005783-010035-00 | 螺栓 M10×35 Bol M10×35 | 2 | ⑤ ⑥ ≥2011-12-01 |
| 201 | G005783-010045-00 | 螺栓 M10×45 Bol M10×45 | 6 | |
| 3 | G000093-000010-00 | 垫圈 10 Washer 10 | 10 | © |
| 3 | G000093-000010-00 | 垫圈 10 Washer 10 | 12 | ⑤ ⑥ |
| 4 | RM622-120000-G00 | 翼形联轴器总成 Cardan assy | 1 | |
| 5 | XM150-130000-G00 | 液力变速箱 Hydraulic transmission box | 1 | |
| 6 | G005783-008018-00 | 螺栓 M8×18 Bol M8×18 | 12 | |
| 7 | G000093-000008-00 | 垫圈 8 Washer 8 | 12 | |
| 8 | | 轮胎总成 (单轮) Type-assy,Single tyre | 2 | 见图 3 See Fig.3 |
| 8 | | 轮胎总成 (双轮) Type-assy,Double tyre | 2 | 见图 4 See Fig.4 |
| 8 | | 轮胎总成 (双轮) Type-assy,Double tyre | 2 | 见图 4 See Fig.4 |

图 22 传动系统
Fig.22 Driving system

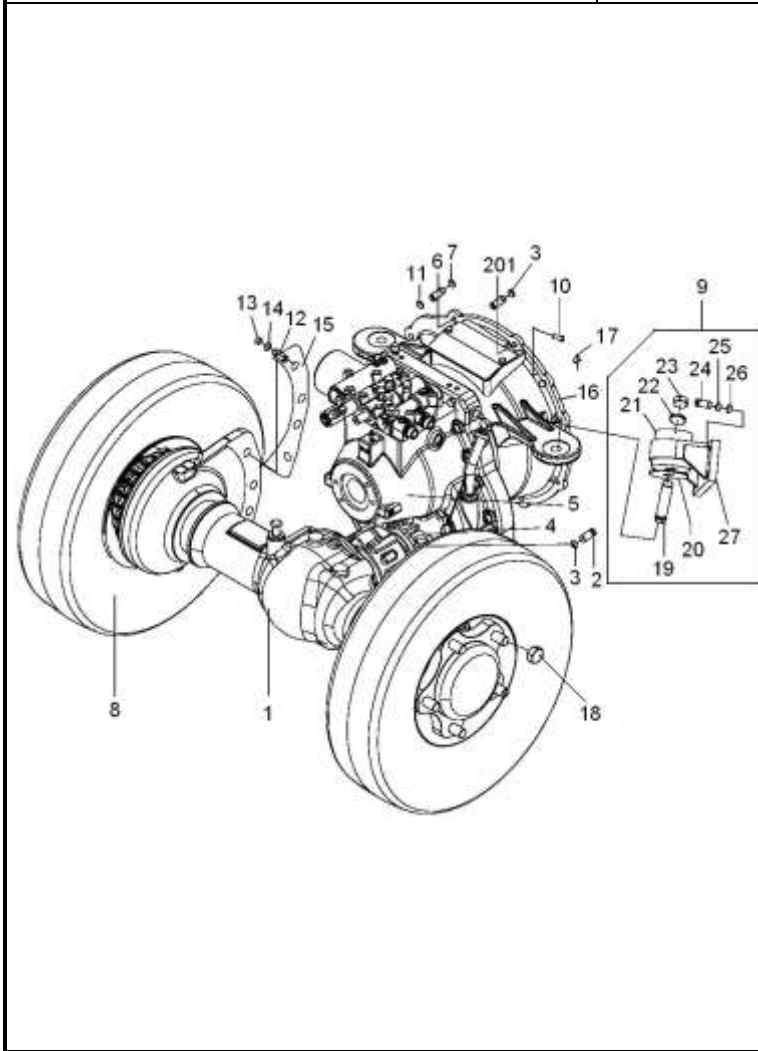
© CPCD10/15/18-XW32M ⓔ CPYD15/18-XW21M ⓕ1 CPYD15/18-XW51M



| 序号 Item | 物料码 Part NO. | 名称 Description | 数量 Qty | 备注或适用车型 Remarks Or Serial NO. |
|------------|-------------------|-----------------------------|-----------|----------------------------------|
| 9 | XM150-150000-000 | 变速箱安装 Gearbox install | 1 | 包含/INC:19-27 |
| 10 | G000119-012035-03 | 销 D12×35 Pin D12×35 | 2 | |
| 11 | G006171-000010-01 | 螺母 M10×1.25 Nut M10×1.25 | 1 | |
| 12 | XF250-110003-000 | 连接螺栓 Bolt | 8 | |
| 13 | G006171-000020-02 | 螺母 M20×1.5 Nut M20×1.5 | 8 | |
| 14 | G000093-000020-00 | 垫圈 20 Washer 20 | 8 | |
| 15 | XF250-110002-000 | 垫板 Gasket | 2 | |
| 16 | R564-100001-000 | 垫片 Washer | 1 | ⓔ ⓕ1 <2011-12-01 |
| 17 | R564-100002-000 | 垫片 Washer | 1 | |
| 18 | N163-220010-000 | 球形螺母 Ball Nut | 12 | |
| 19 | G005782-016130-00 | 螺栓 M16×130 Bol M16×130 | 2 | |
| 20 | XM250-150002-000 | 垫圈 Washer | 2 | |
| 21 | XM250-150001-W00 | 缓冲垫 Cushion | 2 | |
| 22 | G000096-000016-00 | 垫圈 16 Washer 16 | 2 | |
| 23 | G006184-000016-01 | 螺母 M16 Nut M16 | 2 | |

图 22 传动系统
Fig.22 Driving system

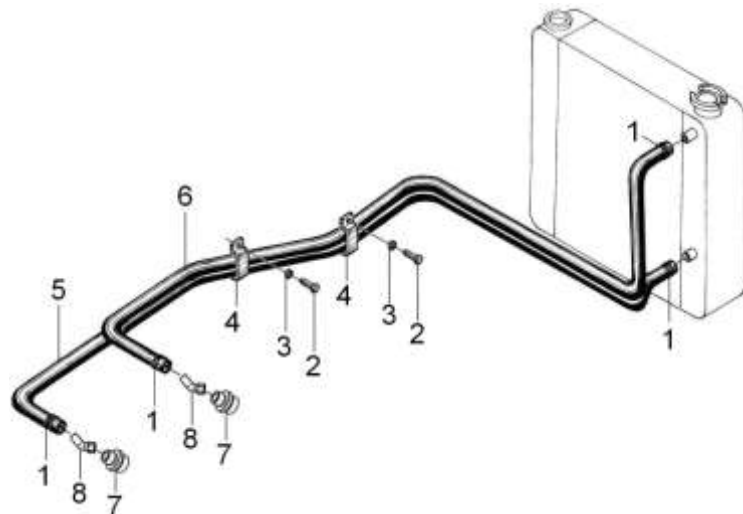
© CPCD10/15/18-XW32M © CPYD15/18-XW21M © CPYD15/18-XW51M



| 序号 Item | 物料码 Part NO. | 名称 Description | 数量 Qty | 备注或适用车型 Remarks Or Serial NO. |
|------------|----------------------------------|--------------------------|-----------|----------------------------------|
| 24 | G005783-012035-00 | 螺栓 M12×35 Bol M12×35 | 8 | |
| 25 | G000093-000012-00 | 垫圈 12 Washer 12 | 8 | |
| 26 | G000095-000012-00 | 垫圈 12 Washer 12 | 8 | |
| 27 | XM150-121000-000 | 变速箱支架 Gearbox Bracket | 2 | |
| | | | | |
| | | | | |
| | | | | |
| | | | | |
| | | | | |
| | | | | |
| | | | | |
| | | | | |
| | | | | |
| | | | | |
| | | | | |
| | | | | |

图 23 冷却油管总成
Fig.23 Cooling oil pipe assy

©CPCD10/15/18-XW32M ⑥CPYD15/18-XW21M ⑦CPYD15/18-XW51M



| 序号 Item | 物料码 Part No. | 名称 Description | 数量 Qty | 备注或适用车型 Remarks Or Serial No. |
|------------|-------------------|--------------------------------|-----------|----------------------------------|
| A1 | XM150-140000-000 | 冷却油管总成 Oil coolingpipe assy | 1 | © |
| A2 | XM151-140000-000 | 冷却油管总成 Oil coolingpipe assy | 1 | ⑥ |
| 1 | Q672-20-G00 | 双钢丝式环箍 20 Clamp 20 | 4 | |
| 2 | G005783-008012-00 | 螺栓 M8×12 Bolt M8×12 | 2 | |
| 3 | G000093-000008-00 | 垫圈 8 Washer 8 | 2 | |
| 4 | N160-110002-000 | 抱箍 Clamp | 2 | |
| 5 | XM150-140004-W00 | 胶管 Φ13 L=1125 Rubber pipe | 1 | © |
| 5 | XM151-140004-W00 | 胶管 Φ13 L=2700 Rubber pipe | 1 | ⑥ |
| 6 | XM150-140002-W00 | 胶管 Φ13 L=1225 Rubber pipe | 1 | © |
| 6 | XM151-120004-W00 | 胶管 Φ13 L=2700 Rubber pipe | 1 | ⑥ |
| 7 | XM250-140003-000 | 直通接头 Connector | 2 | |
| 8 | XM250-140001-000 | 弯管接头 Connector | 2 | |
| | | | | |
| | | | | |
| | | | | |

