

说明

感谢您使用我公司生产的产品。

本零件图册适用于我公司生产的4-5T第四代内燃平衡重式叉车，以便用户在修理更换叉车零部件时，从中查找出所需的零件名称、结构及安装位置，并作为订货参考。

在订货时，必须说明原叉车的型号及出厂日期，并根据本图册，说明零件的详细名称、标号、数量及完整的代号。

我公司叉车根据用户和生产发展，将不断地进行改进，故图册内容可能在一定的时期将有更动，待再版时予以修改，敬请用户注意。

本图册不可避免的存在缺点，我们热诚欢迎用户提出宝贵意见。

本图册为第1版,第1次修改。

2019年04月08日

Introduction

Thank you for selecting our products.

This parts catalogue is applied for the 4-5T the forth generation Internal Combustion Counterbalanced Forklift Truck by our plant. It is intended for users to identify the description, the structure and the assembling location of the parts replaced or rep-aired, and to put order on them.

When ordering parts, it is necessary to state the model of the forklift, and manufacturing date, and the description, specification, quantity and code based on this parts book.

Owing to the rapid development of the technology and our continual improvement of product, the information contained in this book may be changed without notice.

For improving our work, customers are sincerely requested to give us comments and suggestions.

Edition1, Modified1.

Apr 8th, 2019

查询方法:

- 1.在目录中找到相应的系统或总成;
- 2.翻至所标页数,找到该图;
- 3.在其图中找出所需零部件,以及它所标注的序号;
- 4.根据这个序号,在其后附表中可以查到系统或零件的详细信息.

订购零部件时,务请写清叉车的型号,出厂编号,所需零部件的图号及订购数量.

维修时,请使用原厂家提供的零部件,以确保叉车质量.

Indexing Way:

- 1.Find out the indexing for the system or assembly;
- 2.According to above page, find out the detail drawing for the system or assembly required;
- 3.From the detail drawing, find out the parts and their item numbers;
- 4.According to these item numbers, find out details of these parts of the system or assembly from attached table.

When ordering the parts or components, please indicate the model and series numbers of parts or components you require and their quantity.

When you replace parts or components, please apply the real goods made by our company to ensure the truck's quality.

机型列表 Model list

Model	Engine	Drive Capacity(t)/Load center(mm)	
D40-3X	4DX23-82GG3U	4/500	
D45-3X		YQXD45VH2	4.5/500
D50-3X			5/500
D40C-3M	S6S-229		4/500
D45C-3M		YQXD45IVG1	4.5/500
D50C-3M			5/500

目录/Contents

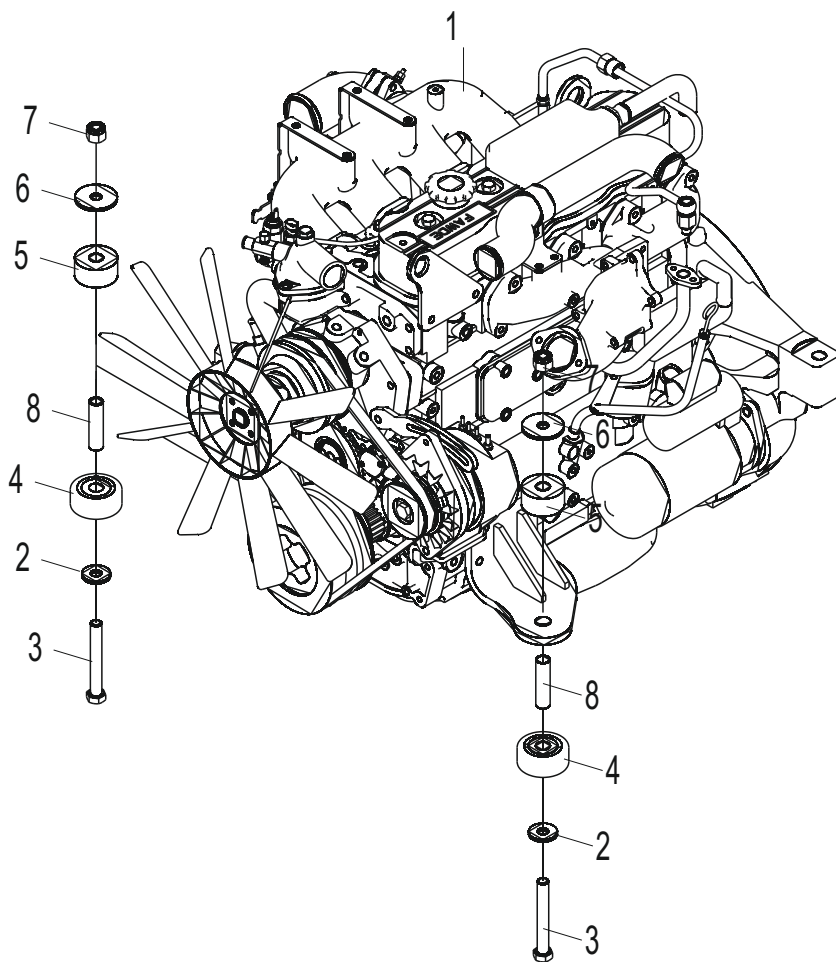
发动机总成/Engine assy.	1
发动机总成/Engine assy.	2
空滤器总成/Air cleaner assy.	3
散热器总成/Radiator assy.	4
散热器总成/Radiator assy.	6
燃油装置总成/Fuel system assy.	8
燃油装置总成/Fuel system assy.	10
消声器总成/Muffler assy.	11
消声器总成/Muffler assy.	13
传动系统/Drive system	15
传动系统/Drive system	17
驱动桥总成/Drive axle assy.	19
制动器总成/Brake assy.	21
变速箱 (I)/Transmission(I)	23
变速箱 (II)/Transmission(II)	24
变速箱 (III)/Transmission(III)	26
控制阀总成/Control valve assy.	29
减速器架组件/Reducer carrier element.	31
差速器总成/Differential assy.	32
双向离合器/Two-way clutch	34
单向离合器/One-way clutch	36
油泵总成/Oil pump assy.	38
驱动轮总成/Drive wheel assy.	40
转向操纵总成/Steering control assy.	41
转向桥总成/Steering axle assy.	43
油门操纵总成/Throttle control assy.	44
行车制动与微动操纵/Brake & inching control	46
停车制动操纵/Parking brake control	48
车架/Frame	49

目录/Contents

发动机机罩总成/Engine hood assy.	51
仪表架总成/Instrument assembly	53
门架(基本型)/Mast (normal mast)	55
货叉及货叉架(基本型)/Fork & Lift bracket(normal mast)	58
侧移管路总成/Sideshift pipe assy.	60
起升管路总成/Lift pipe assy.	62
起升油缸/Lift cylinder	64
倾斜油缸/Tilt cylinder	67
多路阀操纵/Multi-way valve control	69
液压系统/Hydraulic system	71
液压油箱盖板/Hydraulic oil tank cover	75
护顶架/Overhead guard	76
车架电气/Electric of frame	78
车架电气/Electric of frame	80
仪表总成/Instrument assy.	82
仪表总成/Instrument assy.	83
控制器总成/Controller assy.	84
护顶架电气/Electric of overhead guard	85
蓄电池盒总成/Battery box assy.	87
蓄电池盒总成/Battery box assy.	88
电器元件总成/Electrical component assy.	89
标牌/Decal	90
平衡重总成/Counter weight assembly	93

发动机总成 Engine assembly

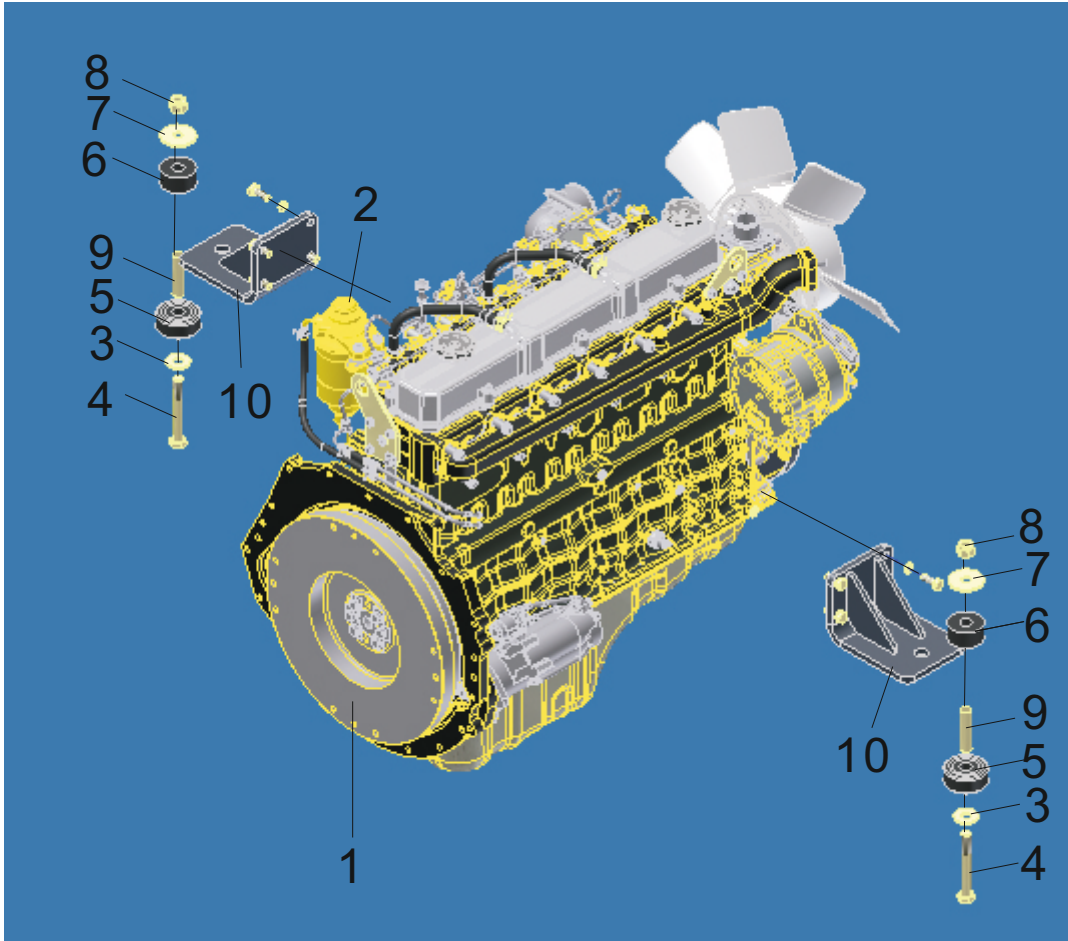
D40/45/50-3X



序号 Item No	编 码 Code	零部件名称 Description	数量 Q'ty	备 注 Remark
1	DFE3D4309	发动机总成 Engine assy.	1	4DX23-82GG3U
2	6FC43D023	垫圈 Washer	2	
3	BEBF1CD8E	螺栓M16×120 Bolt M16×120	2	
4	E220080F0	减震垫 Shock absorber	2	
5	E220080F1	减震垫 Shock absorber	2	
6	E2DEC48D6	垫圈 Washer	2	
7	BF42980D7	螺母M16 Nut M16	2	
8	E220080EE	隔套 Spacing	2	

发动机总成 Engine assembly

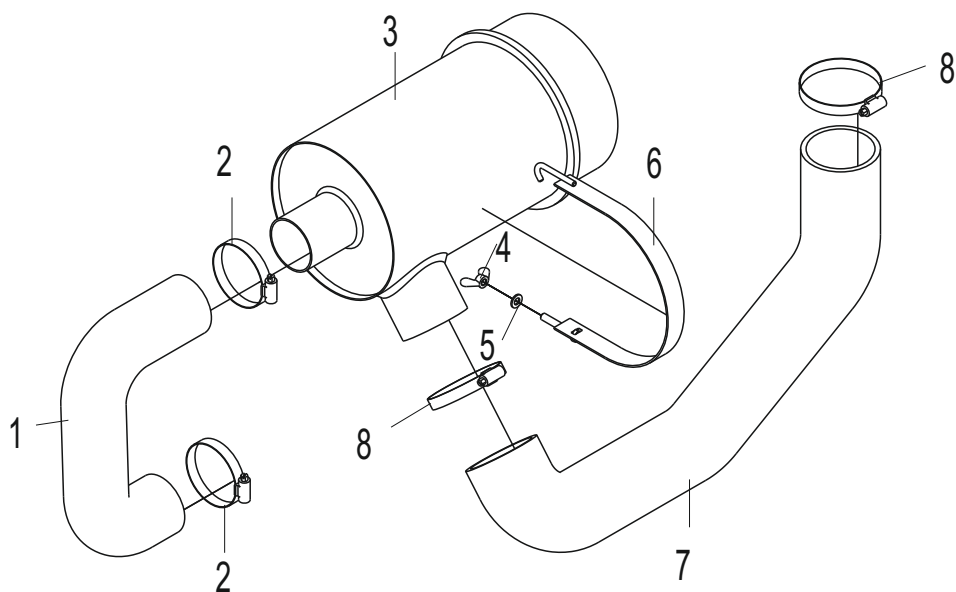
D40/45/50C-3M



序号 Item No	编 码 Code	零部件名称 Description	数量 Q'ty	备 注 Remark
1	DFE3D44D6	发动机总成 Engine assy.	1	三菱 S6S-229
2	DFE3D44D9	油水分离器总成 Oil & water separator	1	发动机总成带
3	6FC43D023	垫圈 Washer	2	
4	BEBF1CD8E	螺栓M16×120 Bolt M16×120	2	
5	E220080F0	减震垫 Shock absorber	2	
6	E220080F1	减震垫 Shock absorber	2	
7	E2DEC48D6	垫圈 Washer	2	
8	BF42980D7	螺母M16 Nut M16	2	
9	E220080EE	隔套 Spacing	2	
10	6FC333759	支座焊合 Support weldment	2	

空滤器总成 Air cleaner assembly

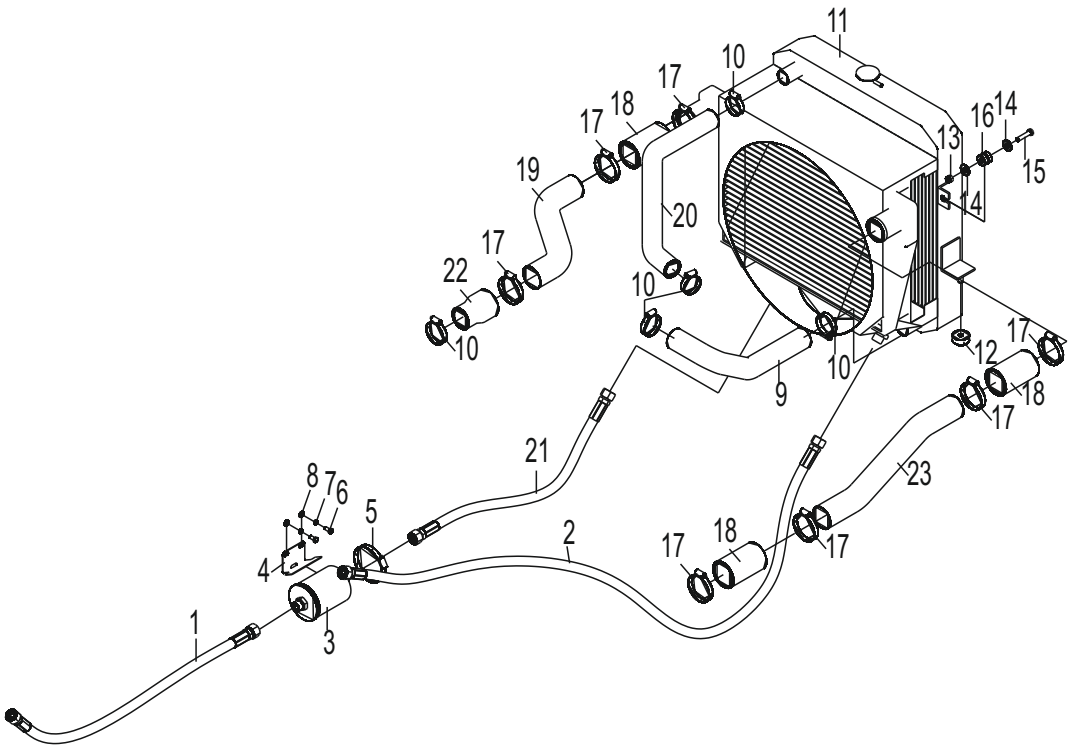
All



序号 Item No	编 码 Code	零部件名称 Description	数量 Q'ty	备 注 Remark
1	E220080E1	成型管	1	锡柴
	E2200835A	成型管	1	S6S
2	E2E9450FE	美式重型喉箍79(57-79)	2	
3	DFE3D430A	空滤器总成	1	
4	BF4EFE18C	螺母M8	1	
5	BF8EF9143	垫圈8	1	
6	E220080F5	卡箍	1	
7	E220080E2	成型管	1	锡柴
	E22008359	成型管	1	S6S
8	D140D7BB1	喉箍d100(80~100)	2	锡柴
	E2E944837	美式重型喉箍105(83-105)	2	S6S

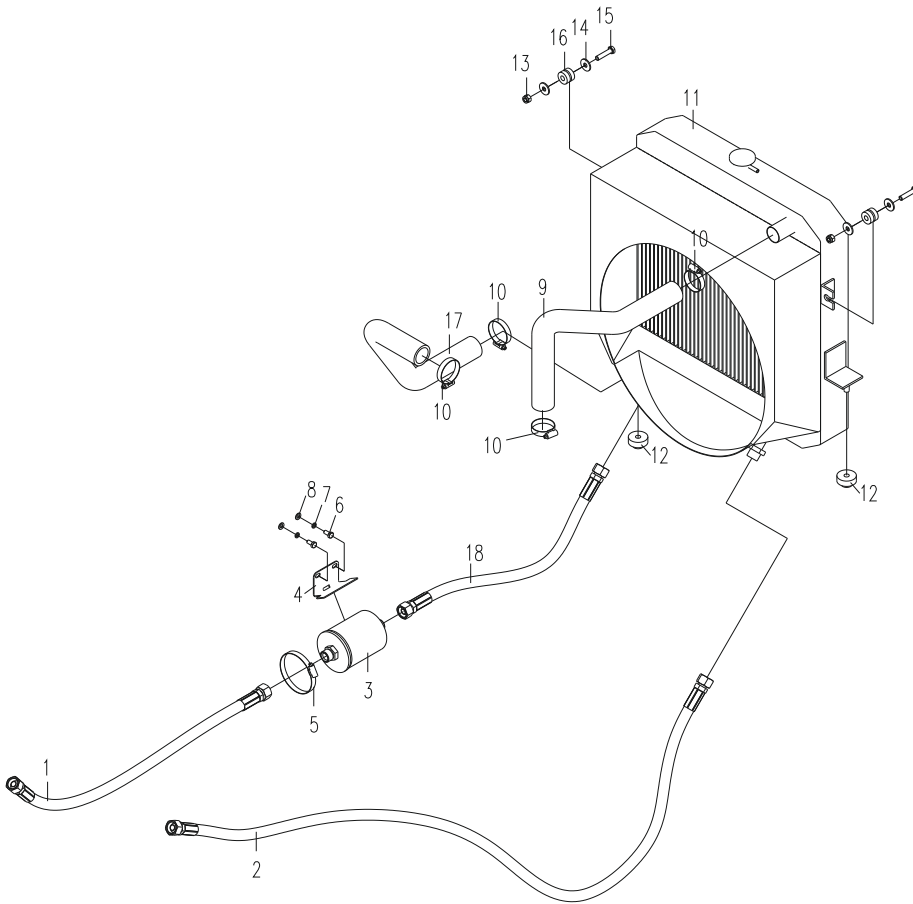
散热器总成 Radiator assembly

D40/45/50-3X



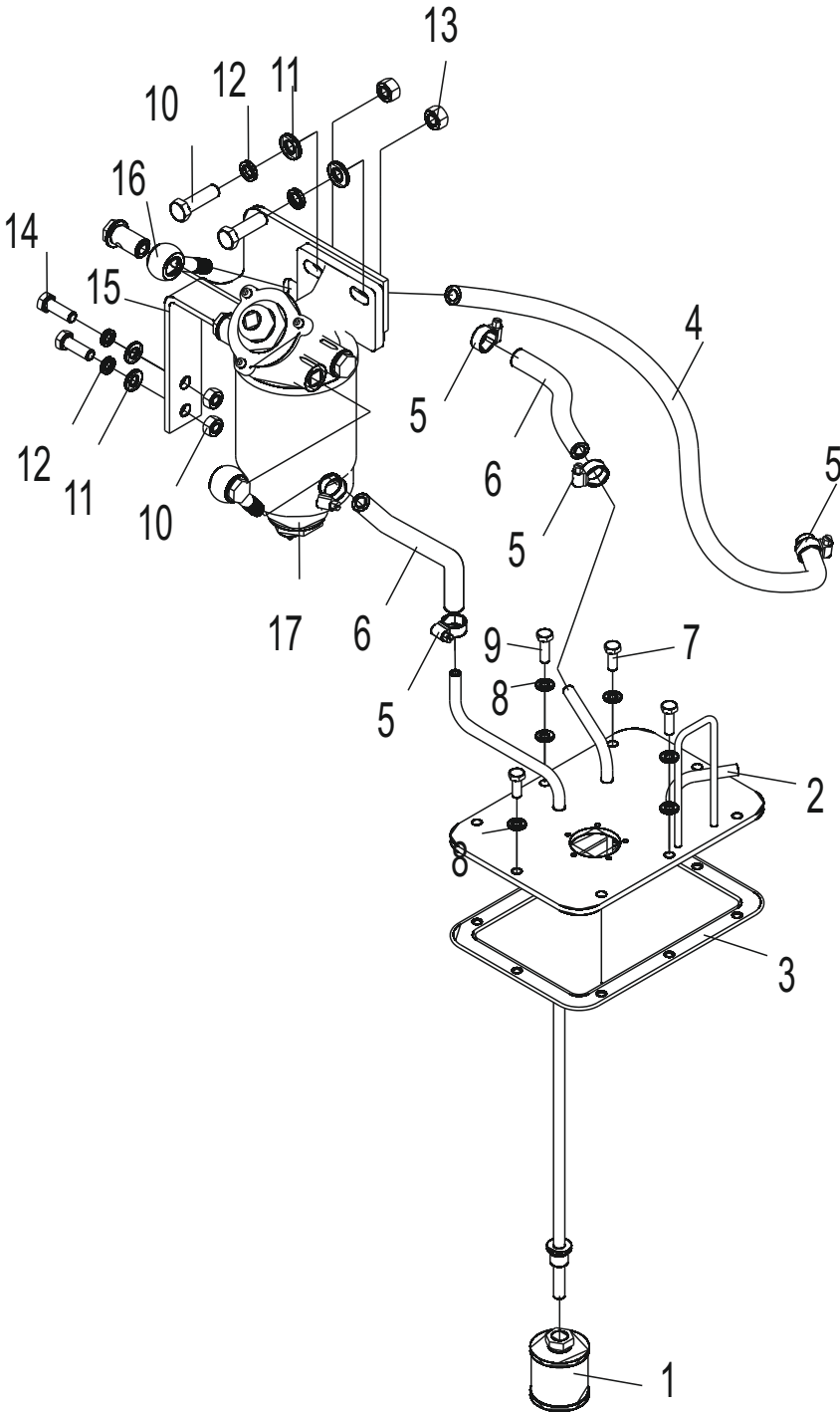
散热器总成 Radiator assembly

D40/45/50C-3M



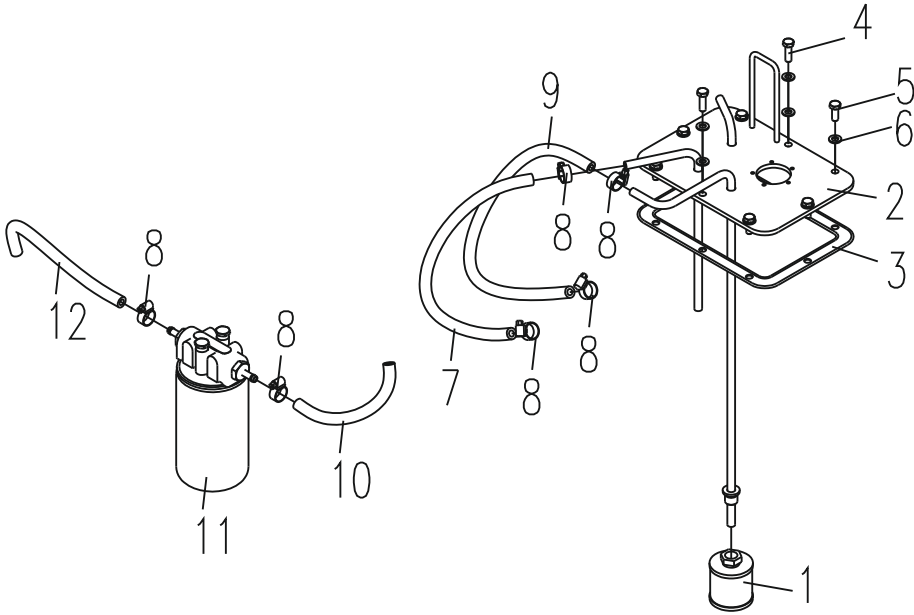
燃油装置总成/Fuel system assembly

D40/45/50-3X



燃油装置总成 Fuel system assembly

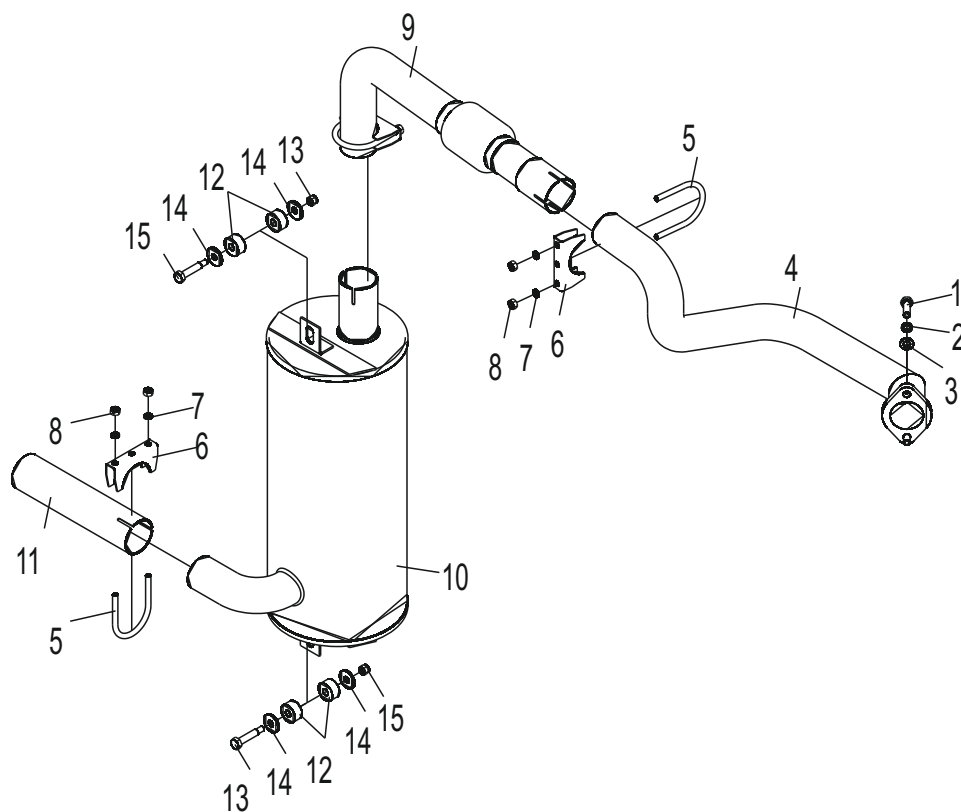
D40/45/50C-3M



序号 Item No	编 码 Code	零部件名称 Description	数量 Q'ty	备 注 Remark
1	6FC33293D	滤芯总成 Filter element assy.	1	
2	E220080F8	燃油箱盖板焊合 Cover plate weldment	1	
3	E220080F7	密封垫 Seal gasket	1	
4	BEC006CEA	螺栓M8×25 Bolt M8×25	2	
5	BEC006C86	螺栓M8×20 Bolt M8×20	6	
6	D129F6B31	组合垫圈8 Combination washer 8	10	
7	6FC3498DA	胶管 Hose	1	
8	D140D75D5	喉箍d20 (12~20) Hoop d20(12~20)	8	
9	6FC3498E3	胶管 Hose	1	
10	6FC34990F	胶管 Hose	1	
11	DFE3D44DB	油滤器总成 Oil filter	1	
12	6FC349910	胶管 Hose	1	

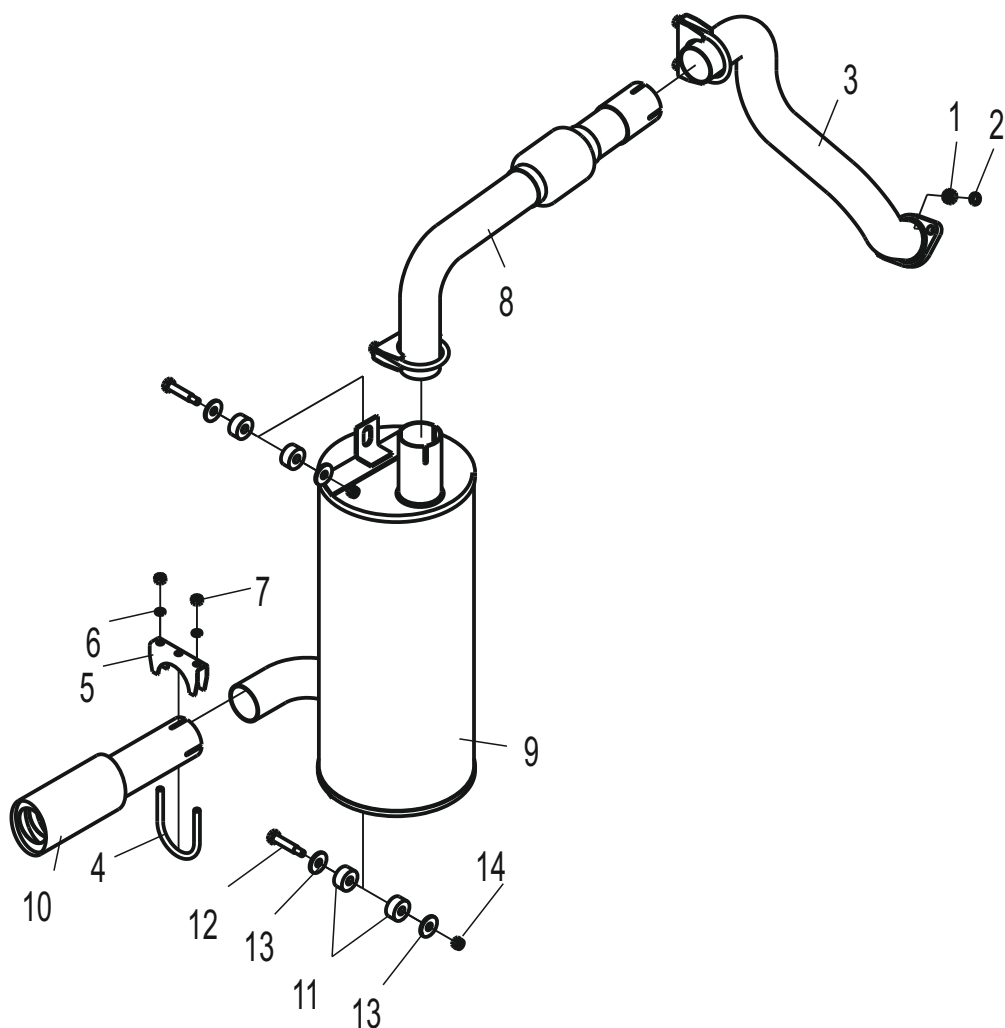
消声器总成 Muffler assembly

D40/45/50-3X



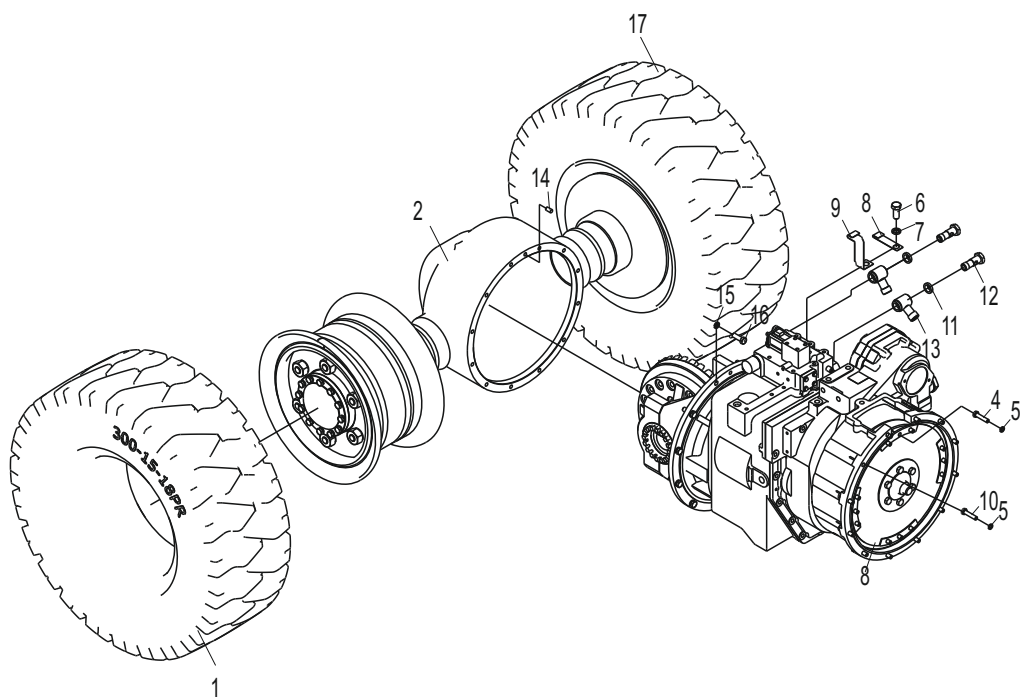
消声器总成 Muffler assembly

D40/45/50C-3M



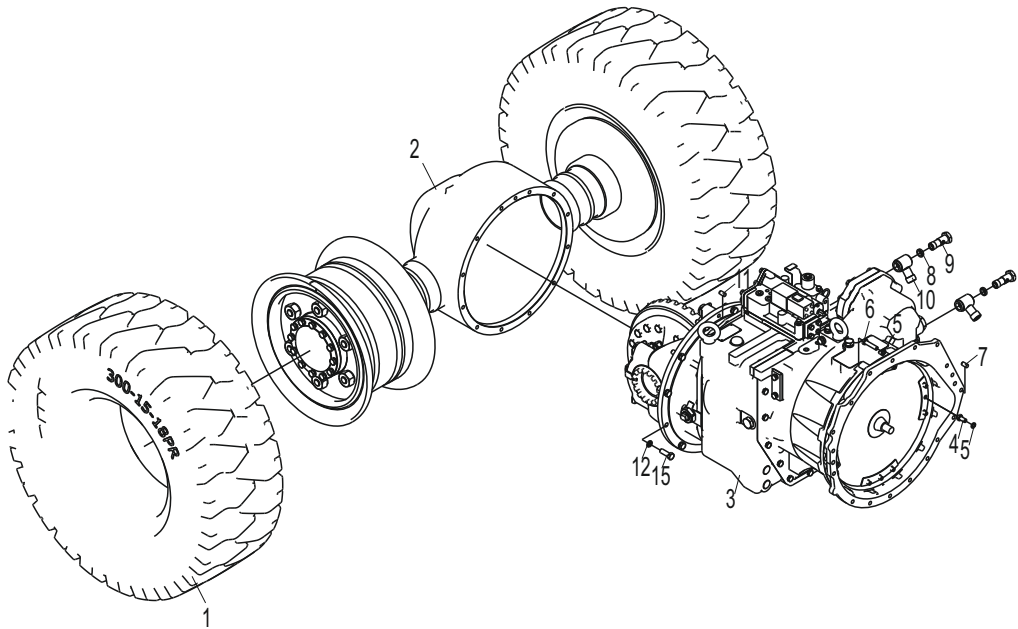
传动系统 Drive system

D40/45/50-3X



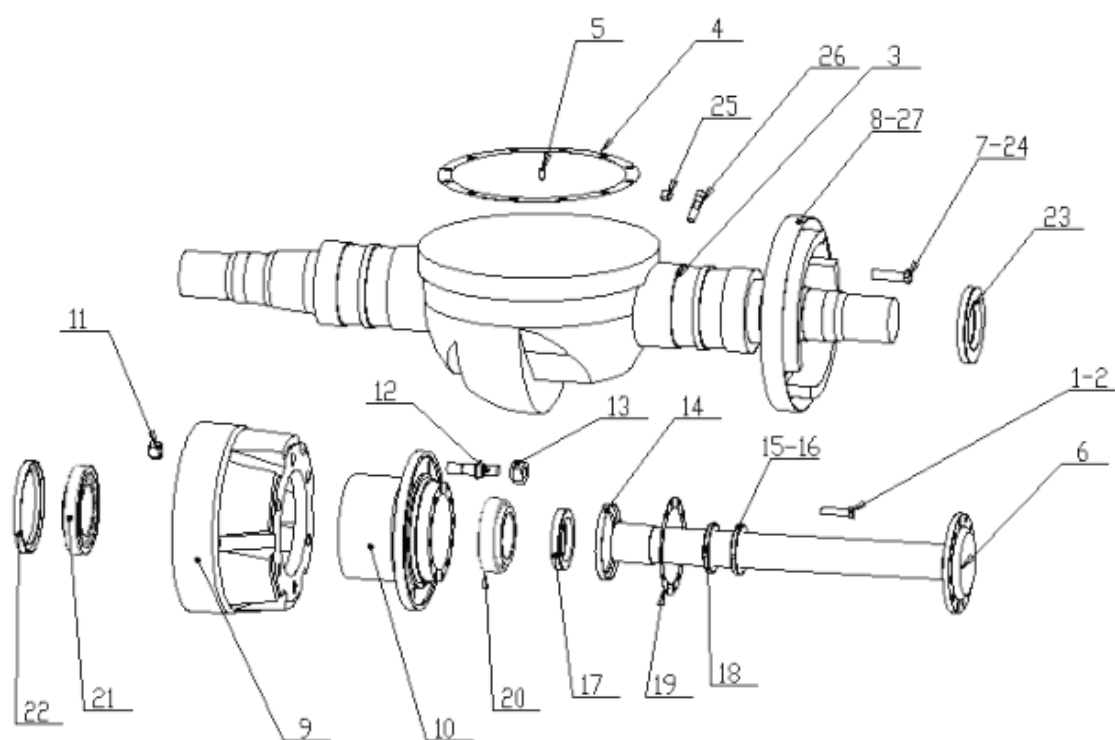
传动系统 Drive system

D40/45/50C-3M



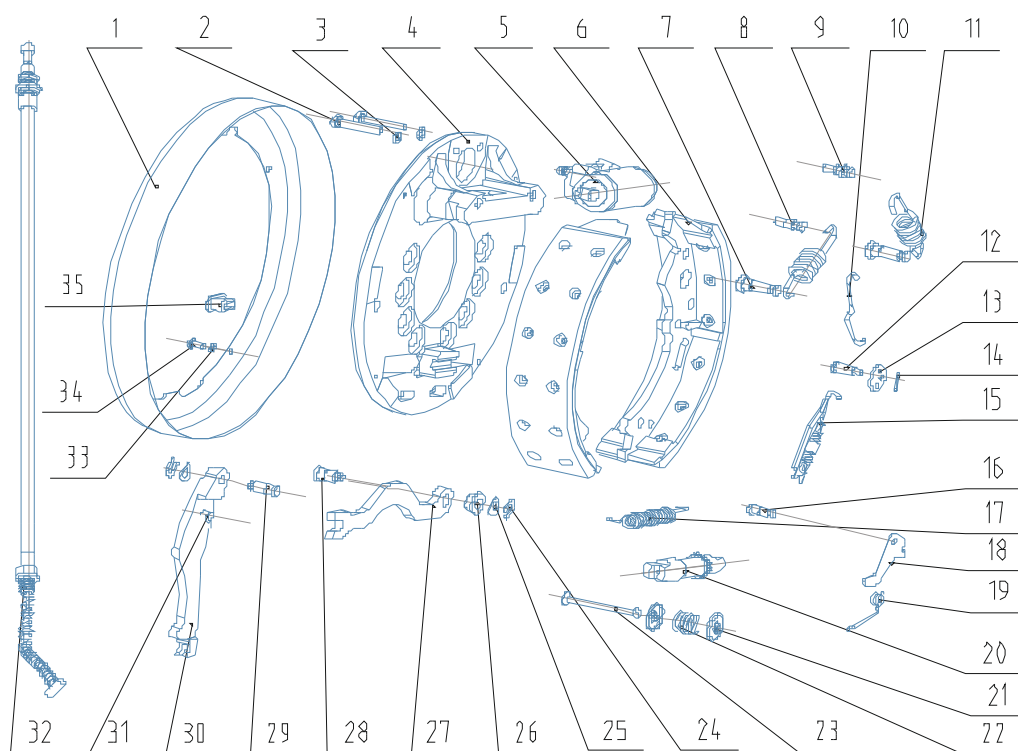
驱动桥总成 Drive axle assembly

All



制动器总成 Wheel brake assembly

All

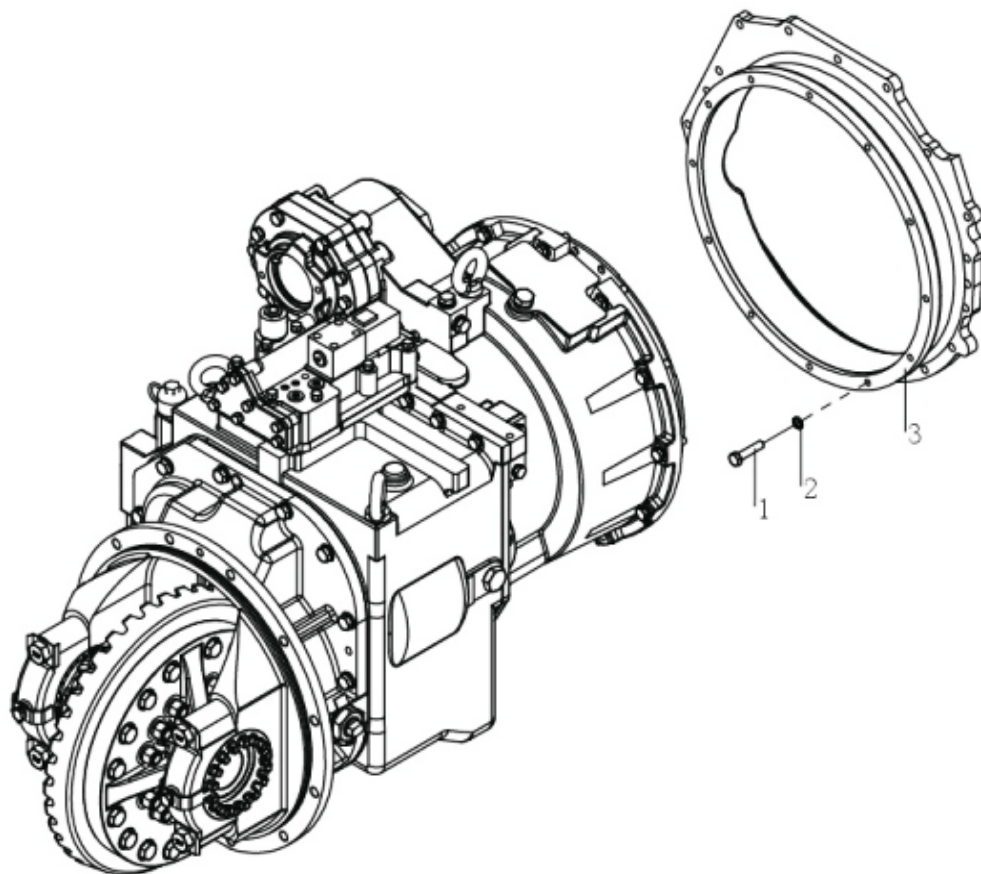


制动器总成 Wheel brake assembly

序号 Item No	图号 Part No	零部件名称 Description	数量 Q'ty	备注 Remark
1	AOIC3-72081	罩壳 Case	1	
2	GB5782-86	螺栓 Bolt	2	
3	GB95-87	弹簧垫圈 Spring washer	2	
4	AOIC3-70091/70101	制动底板(左/右) Brake bottom plate(L/F)	1	
5	HRAOIC3-702	制动分泵总成 Brake wheel cylinder assy.	1	
6	HRAOIC3-705	制动蹄带摩擦片总成 Friction plate assy.	2	
7	AOIC3-72041	回位簧销 Return spring pin	2	
8	25783-71460G	销1 Pin 1	1	
9	25783-71450G	销2 Pin 2	1	
10	25783-71470G-L/R	上拉杆(左/右) Upper pull rod(L/R)	1	
11	25783-71380G	回位簧 Return spring	2	
12	25783-71430G	摇臂销 Rocker pin	1	
13	25783-71500G	摇臂 Rocker	1	
14	GB91-86	开口销 Cotter pin	1	
15	AOIC3-71210G	弹簧铆接装置 Spring riveted device	1	
16	25783-71410G	扭簧销 Twisted-coil pin	1	
17	25783-71370G	下拉簧 Lower pull spring	1	
18	25783-71480G	棘爪 Pawl	1	
19	25783-71360G-L/R	扭簧(左/右) Helical torsion spring(L/R)	1	
20	25783-71160G-L/R	调整器总成(左/右) Regulator assy.(L/R)	1	
21	25783-71340G	压簧座 Compression spring seat	4	
22	25783-71350G	压簧 Compression spring	2	
23	AOIC3-72011	压簧拉杆 Compression spring pull rod	2	
24	24433-70170G	杆销挡圈 Rod pin snap	2	
25	24433-70160G	弹性垫片 Spring gasket	2	
26	AOIC3-72061	衬套 Bushing	1	
27	AOIC3-72051	手制动推杆 Hand Brake push rod	1	
28	AOIC3-72071	推杆销 Push rod pin	1	
29	24433-70150G	拉杆销 Pull rod pin	1	
30	AOIC3-72031/72041	手制动拉杆(左/右) Hand brake pull rod (L/R)	1	
31	AOIC3-72021	销 Pin	1	
32	R450-113200/114200-A00	制动钢索总成(左/右) Steel cable assy.(L/R)	1	
33	GB95-87	弹簧垫圈 Spring washer	4	
34	GB5782-86	螺栓 Bolt	4	
35	25783-71490G	胶堵 Rubber stopper	2	

变速箱(I) /Transmission(I)

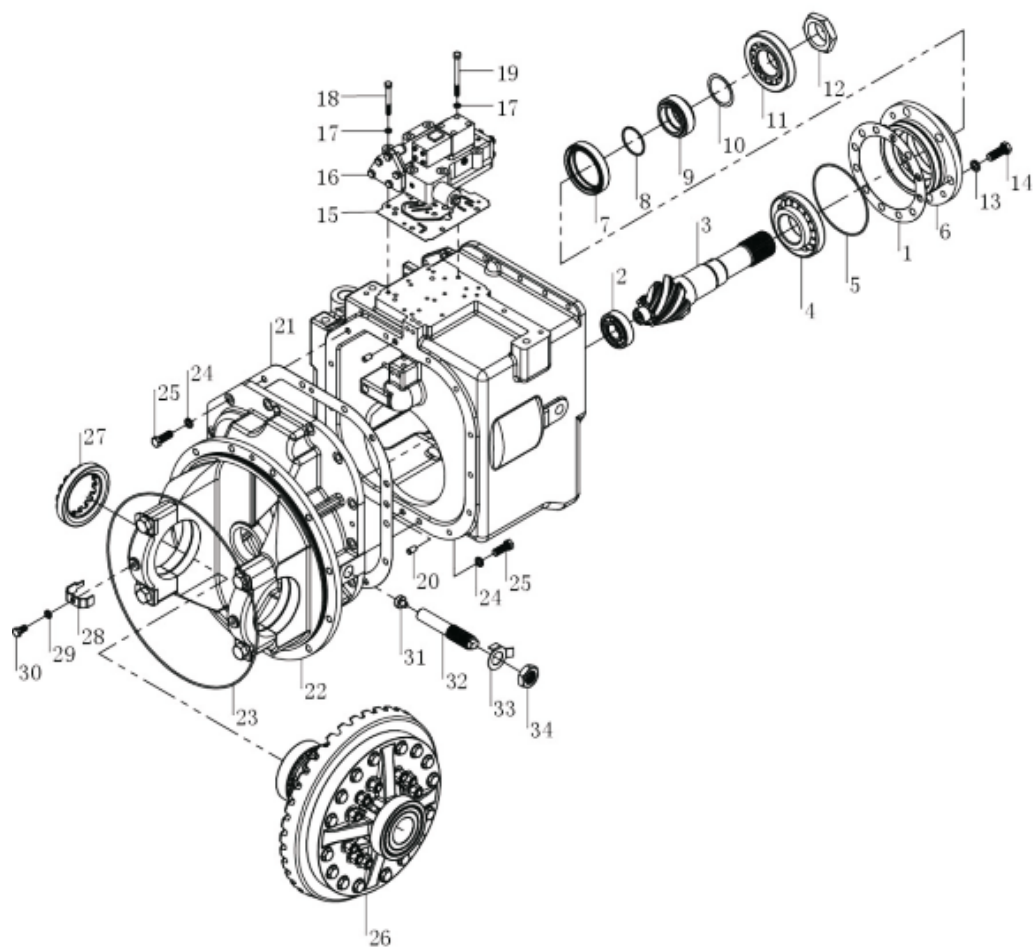
D40/45/50C-3M



序号 Item No	图号 Part No	零部件名称 Description	数量 Q'ty	备注 Remark
1	GB/T5786	螺栓M10x1.25x45 Bolt M10×1.25×45	12	
2	GB/T93	弹簧垫圈10 Washer 10	12	
3	YQX100LG1-7001	过渡盘 Transition disc	1	

变速箱(II) / Transmission(II)

All

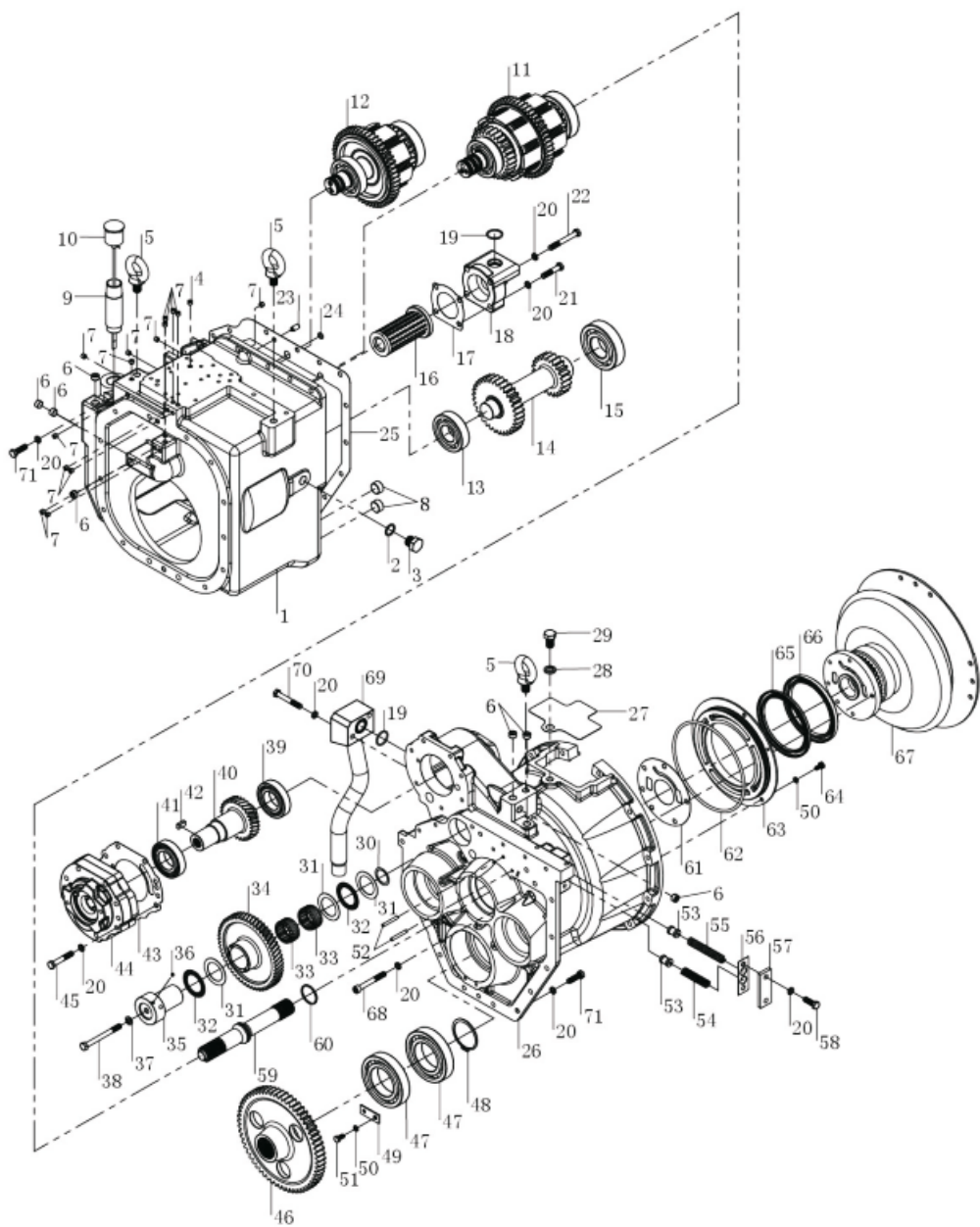


变速箱(II) Transmission(II)

序号 Item No	图号 Part No	零部件名称 Description	数量 Q'ty	备注 Remark
1	YQX45-0012	调整垫片 Adjustment gasket	按需	
2	GB/T283-94	轴承NUP306EM Bearing	1	
3	YQX45-0401	主动弧齿锥齿轮 Bevel gear	1	
4	GB/T297-94	轴承31312 Bearing	1	
5	GB1235-76	O形密封圈150×3.1 O seal ring	1	
6	YQX45-0402	轴承座 Bearing seat	1	
7	YQX45-0410	双向油封 Two-way oil seal	1	
8	GB1235-76	O形密封圈60×3.1 O-seal ring	1	
9	YQX45-0403	隔套 Spacer	1	
10	YQX45-0404	调整垫 Adjustment gasket	按需	
11	GB/T297-94	轴承31311 Bearing	1	
12	YQX45-0405	螺母 Nut	1	
13	GB93-87	弹簧垫圈14 Spring	6	
14	GB5786-86	螺栓M14×1.5×40 Bolt	6	
15	YQX45-0003	纸垫 Paper gasket	1	
16	YQXD45V-4000	控制阀总成 Control valve assy.	1	
17	GB93-87	弹簧垫圈8 Spring washer 8	8	
18	GB5782-86	螺栓M8×65 Bolt M8×65	7	
19	GB5782-86	螺栓M8×90 Bolt M8×90	1	
20	GB119-86	圆柱销B10×20 Cylindrical pin B10×20	2	
21	YQX45-0004	纸垫 Paper gasket	1	
22	YQX45-0300	减速器架组件 Reducer carrier group	1	
23	YQX45-0304	O形密封圈 O seal ring	1	
24	GB93-87	弹簧垫圈12 Spring washer 12	14	
25	GB5786-86	螺栓M12×1.25×35 Bolt M12×1.25×35	14	
26	YQX45-2000	差速器总成 Differential assy.	1	
27	YQX45-0007	调整螺母 Adjustment nut	2	
28	YQX45-0006	锁片 Lock split	2	
29	GB93-87	弹簧垫圈10 Spring washer 10	2	
30	YQX45-0005	六角头带孔螺栓 Bolt	2	
31	YQX45-0008	滑块 Slide block	1	
32	YQX45-0009	螺柱 Stud	1	
33	YQX45-0010	止动垫圈 Stop washer	1	
34	GB6173-86	螺母M27×2 Nut M27×2	1	

变速箱(III) Transmission(II)

All



变速箱(III) / Transmission(III)

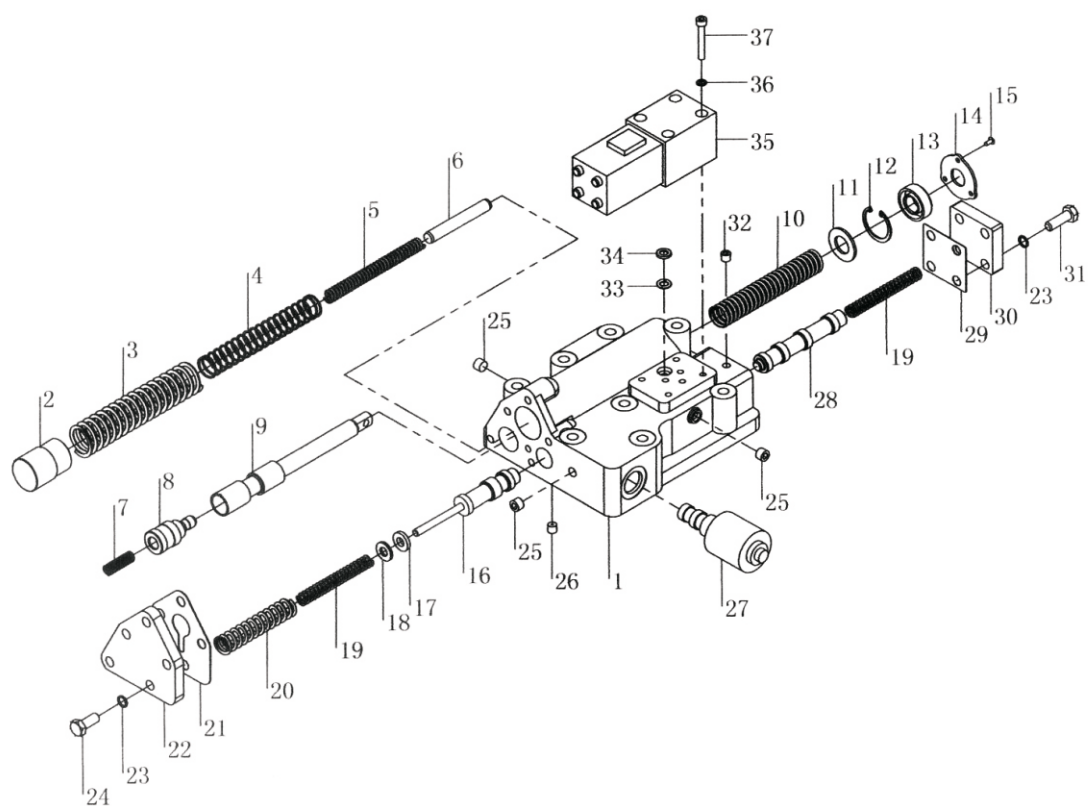
序号 Item No	图号 Part No	零部件名称 Description	数量 Q'ty	备注 Remark
1	YQX45V-0101	箱体 Case body	1	
2	Q20-03	密封垫22×28×2 Seal gasket	1	
3	YQX45-0102	螺塞 Screw plug	1	
4	YQX100-4027	阻尼塞 Damper plug	1	
5	GB825-88	吊环螺钉M16×35 Eye screw	3	
6	YQX100-0025	螺塞R3/8 Plug	7	
7	YQX100-0024	螺塞R1/8 Plug	14	
8	YQX100-0019	螺塞R3/4 Plug	2	
9	YQX45-0103	进油管 Oil inlet pipe	1	
10	YQX30-0400	加油器盖组件 Oil filler element	1	
11	YQX45V-1000	双向离合器总成 Two-way clutch assy.	1	
12	YQX45-5000	单向离合器总成 One-way clutch assy.	1	
13	GB/T276-94	轴承6308 Bearing	1	
14	YQX45-0011	惰轮轴 Idler shaft	1	
15	GB/T276-94	轴承6310 Bearing	1	
16	YQX100-0200	粗滤器 Coarse strainer	1	
17	YQX100-0018	垫子 Gasket	1	
18	YQX100-0016	滤清器盖 Air filter cap	1	
19	GB1235-76	O型密封圈35×3.1 O seal ring	2	
20	GB93-87	弹簧垫圈10 Spring washer 10	38	
21	GB5785-86	螺栓M10×1.25×50 Bolt M10×1.25×50	2	
22	GB5785-86	螺栓M10×1.25×80 Bolt M10×1.25×80	2	
23	GB119-86	圆柱销B10×20 Cylindrical pin B10×20	2	
24	GB1235-76	O形密封圈15×2.4 O seal ring	1	
25	YQX45V-0002	纸垫 Paper gasket	1	
26	YQX45V-0201	变矩器壳体 Torque converter case	1	
27	YQX45-0202	盖板 Cover plate	1	
28	GB93-87	弹簧垫圈16 Spring washer 16	1	
29	GB5783-86	螺栓M16×25 Bolt	1	
30	YQX100-0007	调整垫 Adjustment gasket	按需	
31	GB4605-84	AS456501止推垫圈 Thrust washer	3	
32	GB4605-84	889109滚针轴承 Needle bearing	2	
33	GB5846-86	K455325滚针轴承 Needle bearing	2	
34	YQX100-0006	惰轮 Idler	1	
35	YQX100-0008	惰轮支架 Idler bracket	1	
36	GB308-84	钢球8/32 " G20b Steel ball	1	

变速箱(III) / Transmission(III)

序号 Item No	图 号 Part No	零部件名称 Description	数量 Q'ty	备 注 Remark
37	GB97.2-85	垫圈10-140HV Washer	1	
38	GB5785-86	螺栓M10×1.25×108 Bolt	1	
39	GB276-94	轴承6209RS Bearing	1	
40	YQX100-0005	油泵驱动齿轮 Drive gear	1	
41	GB276-94	轴承6209RS Bearing	1	
42	YQX100-0003	键 Key	1	
43	YQX100-0004	密封垫 Seal gasket	1	
44	YQX100-3000	油泵总成 Oil pump assy.	1	
45	GB5785-86	螺栓M10×1.25×60 Bolt	7	
46	YQX45-0014	输出齿轮 Output gear	1	
47	GB/T276-94	轴承6214 Bearing	2	
48	GB894.1-86	轴用弹性挡圈70 Spring sprag	1	
49	YQX45-0015	固定板 Fixed plate	1	
50	GB93-87	弹簧垫圈8 Spring washer 8	5	
51	GB5783-86	螺栓M8×16 Bolt	2	
52	YQX100-0031	销子 Pin	2	
53	YQX100-0026	活塞 Piston	2	
54	YQX100-0030	弹簧 Spring	1	
55	YQX100-029	弹簧 Spring	1	
56	YQX100-0028	密封垫 Seal gasket	1	
57	YQX100-0027	盖 Cover	1	
58	GB5786-86	螺栓M10×1.25×35 Bolt	2	
59	YQX45V-0013	涡轮轴 Turbine shaft	1	
60	YQX100-0012	密封环 Seal ring	1	
61	YQX45V-0001	变矩器导轮座密封垫 Seal gasket	1	
62	YQX100-0011	O型密封圈 O seal ring	1	
63	YQX100A-0009	支承板 Pivot plate	1	
64	GB5782-86	螺栓 M8×15 Bolt	3	
65	YQX100A-0100	油封 Oil seal	1	
66	YQX100B-0100	油封 Oil seal	1	
67	YQX45VH2-6000	液力变矩器总成 Hydraulic torque converter	1	
68	GB70-85	螺钉M10×80 Screw	6	
69	YQX45V-0500	吸油管总成 Oil suction assy.	1	
70	GB5785-86	螺栓M10×1.25×70 Bolt	2	
71	GB5786-86	螺栓M10×1.25×35 Bolt	17	

控制阀总成/ Control valve assembly

All

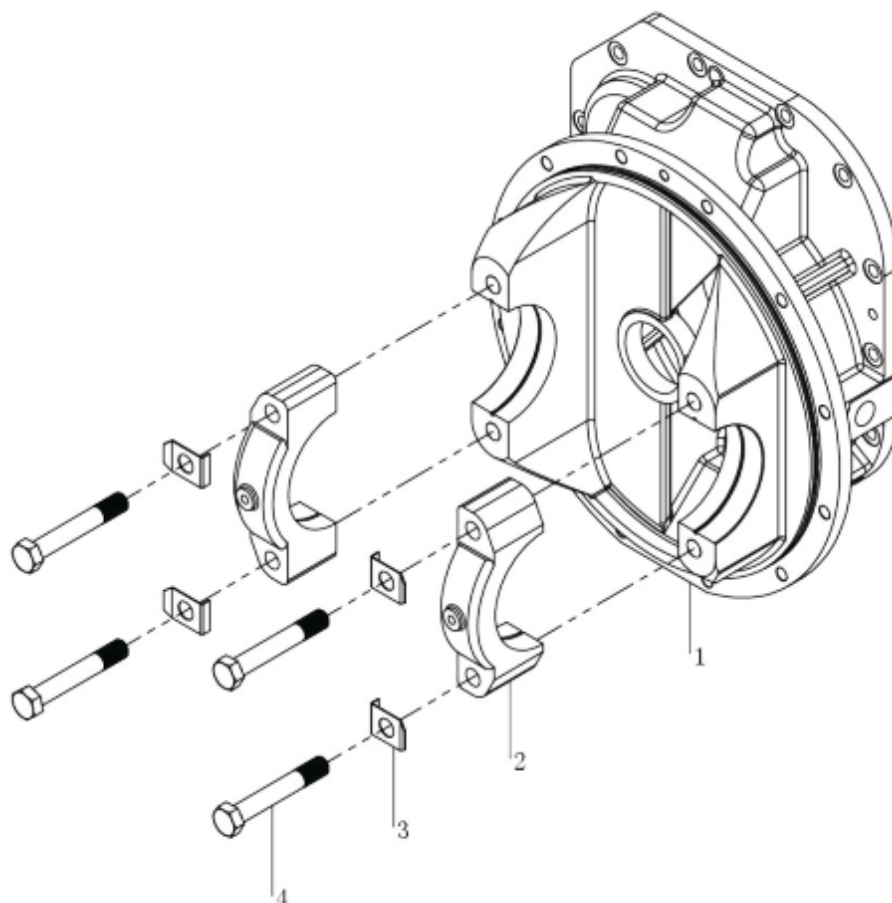


控制阀总成/ Control valve assembly

序号 Item No	图号 Part No	零部件名称 Description	数量 Q'ty	备注 Remark
1	YQXD45A-4101	阀体 Valve body	1	
2	YQX100-4023	活塞 Piston	1	
3	YQX100-4022	弹簧 Spring	1	
4	YQX100-4026	弹簧 Spring	1	
5	YQX100-4024	弹簧 Spring	1	
6	GB119-86	圆柱销B10×80 Cylindrical pin	1	
7	YQX30-5003	弹簧 Spring	1	
8	YQX45-4002	滑阀 Slide valve	1	
9	YQX45A-4004	微动阀杆 Inching valve rod	1	
10	YQX45-4003	弹簧 Spring	1	
11	GB/T97.1-2002	垫圈16 Washer 16	1	
12	GB/T893.1-86	挡圈30 Snap	1	
13	TRED00140	油封14×30×10 Oil seal	1	
14	YQX100-4028	压盖 Pressure cover	1	
15	GB/T67-2000	螺钉M3×8 Screw	3	
16	YQX45-4014	微调阀芯 Valve core	1	
17	YQXD45-4115	调整垫片 Adjustment gasket	1	
18	YQXD45-4114	垫圈 Washer	按需	
19	YQX100-4015	弹簧 Spring	2	
20	YQX100-4016	弹簧 Spring	1	
21	YQXD45A-4103	衬垫 I Bushing I	1	
22	YQXD45A-4102	盖 Cover	1	
23	GB/T93-87	垫圈8 Washer	9	
24	GB/T5783-86	螺栓M8×25 Bolt	5	
25	CDB-F15-1.22	圆锥螺堵 (ZG1/8) Cone plug stopper	3	
26	YQXD45-4112	螺堵 Plug stopper	1	
27	YQXD100A-4300	电磁档位阀 Gear position valve	1	
28	YQXD45-4111	滑阀 Slide valve	1	
29	YQXD100C-4105	衬垫 I Bushing I	1	
30	YQXD100C-4104	盖 I Cover I	1	
31	GB/T5783-2000	螺栓M8×20 Bolt	4	
32	GB/T7306.2-2000	圆锥螺堵ZG1/16 Plug stopper	1	
33	GB1235-76	O形圈12×2.4 O ring	1	
34	YQXD45-4107	滤网 Filter screen	1	
35	YQXD100-4200	电磁换向阀 Solenoid reversal valve	1	
36	GB/T93-87	垫圈5 Washer 5	4	
37	GB/T70.1-2000	螺钉M5×35 Screw	4	

减速器架组件/ Reducer carrier element

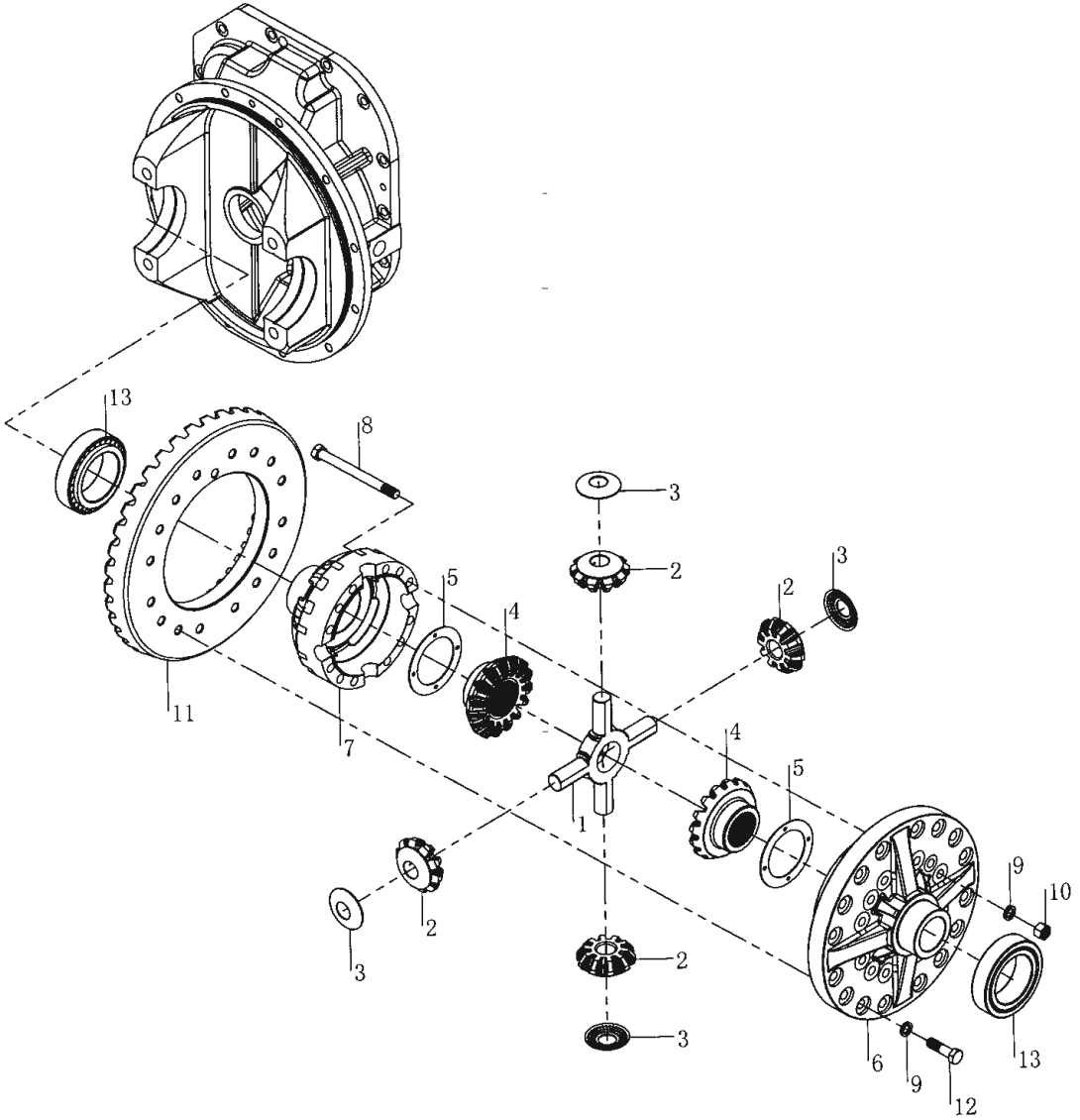
All



序号 Item No	图号 Part No	零部件名称 Description	数量 Q'ty	备注 Remark
1	YQX45-0301	减速架 Reducer carrier	1	
2	YQX45-0302A	轴承座 Bearing seat	2	
3	YQX45-0305	锁片 Lock split	4	
4	YQX45-0303A	螺栓 Bolt	4	

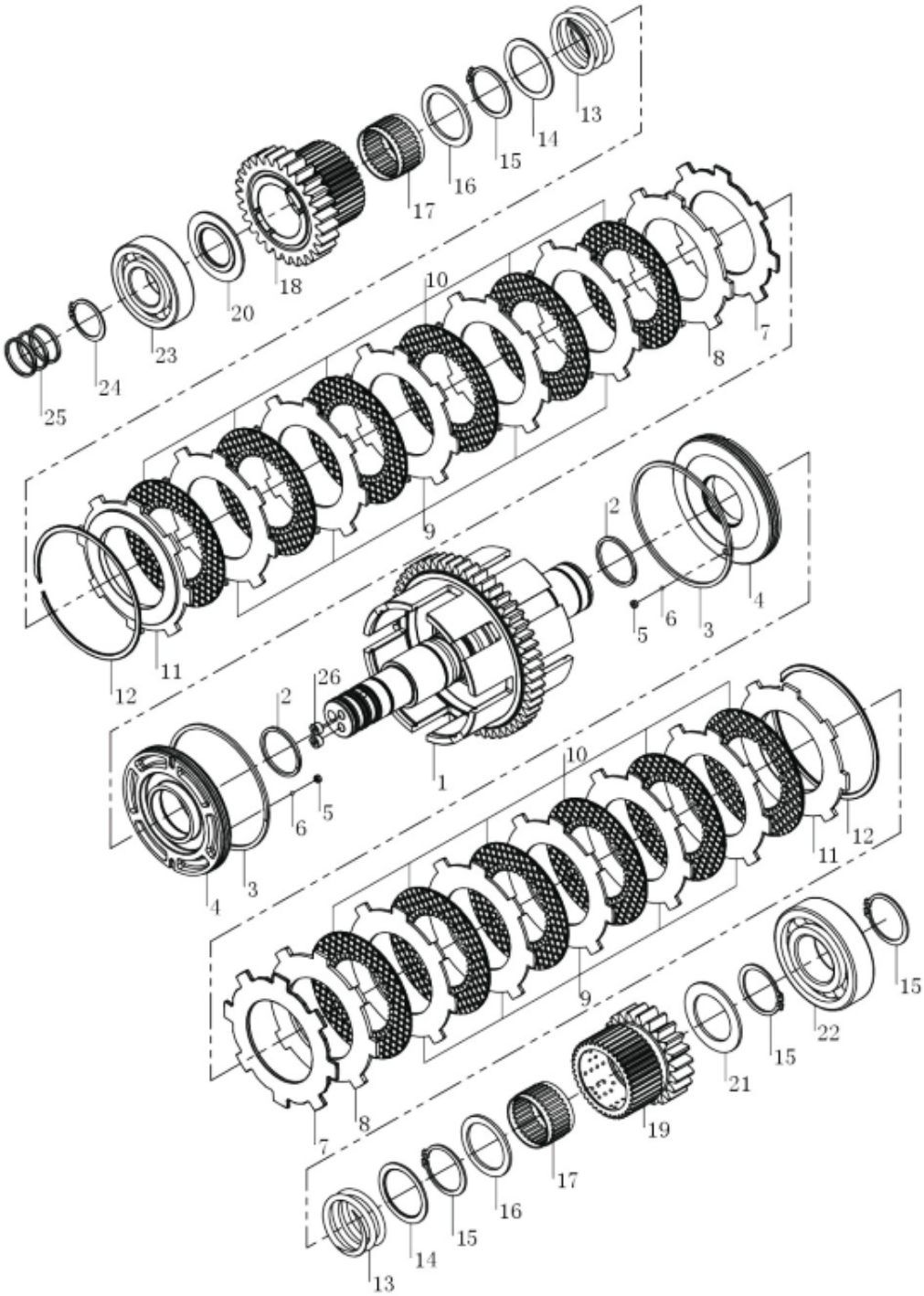
差速器总成 Differential assembly

All



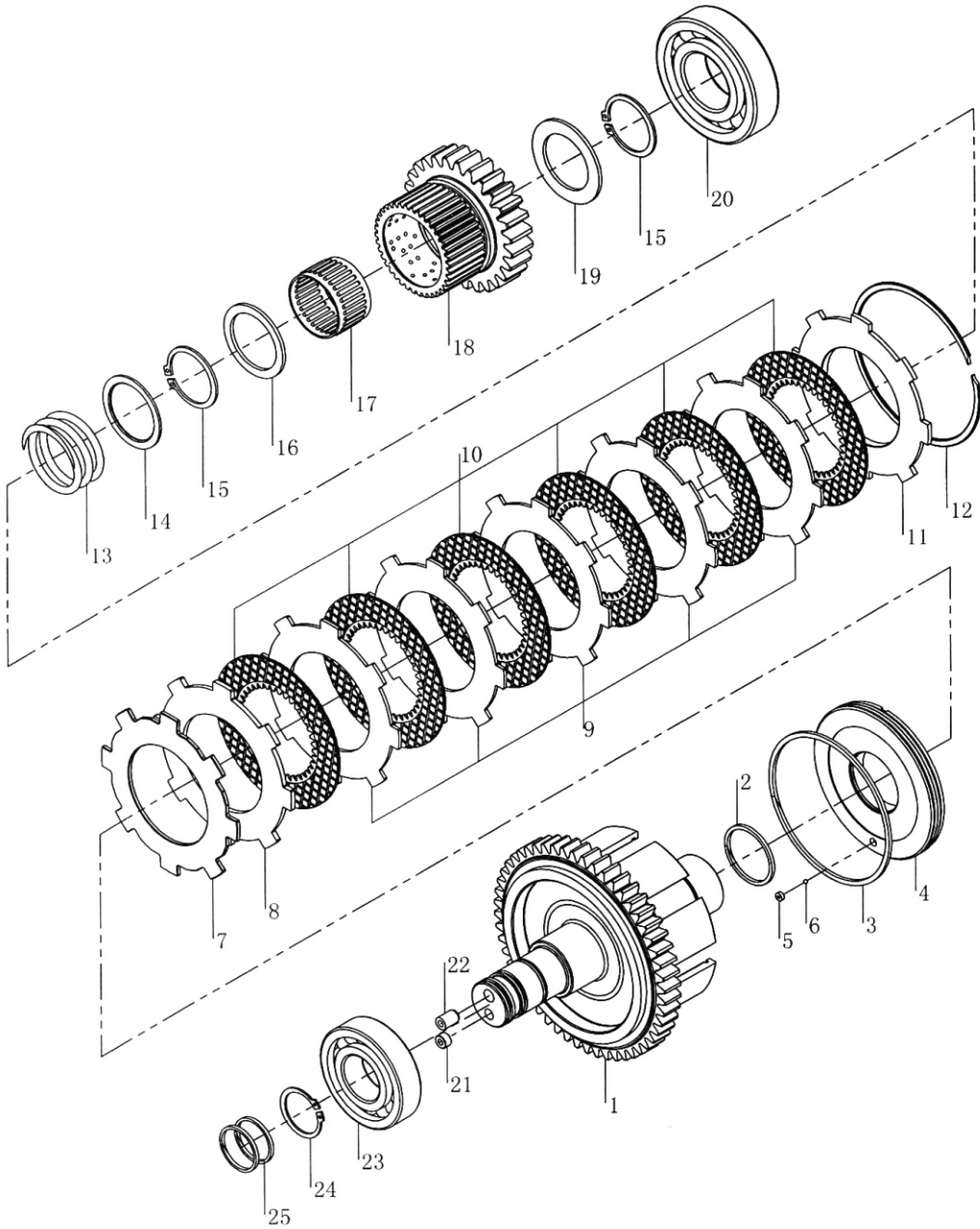
双向离合器总成 Two-way clutch assembly

All



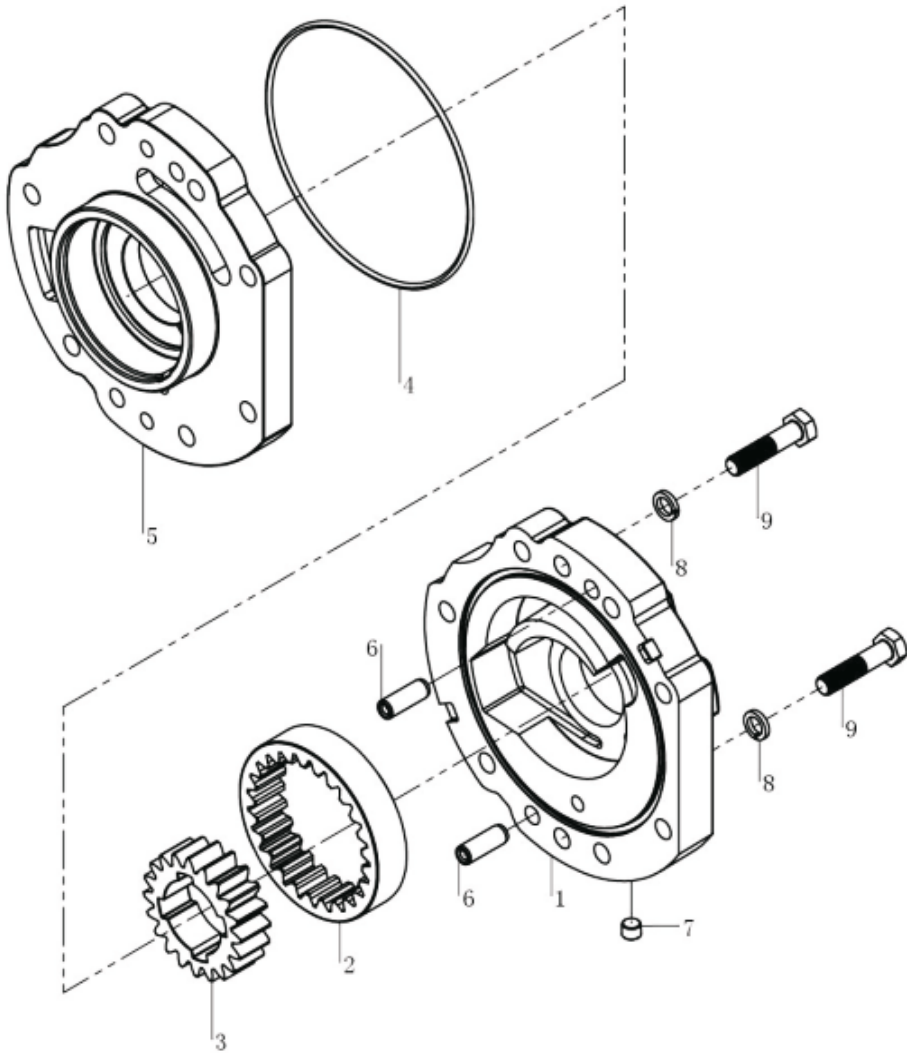
单向离合器总成 One-way clutch assembly

All



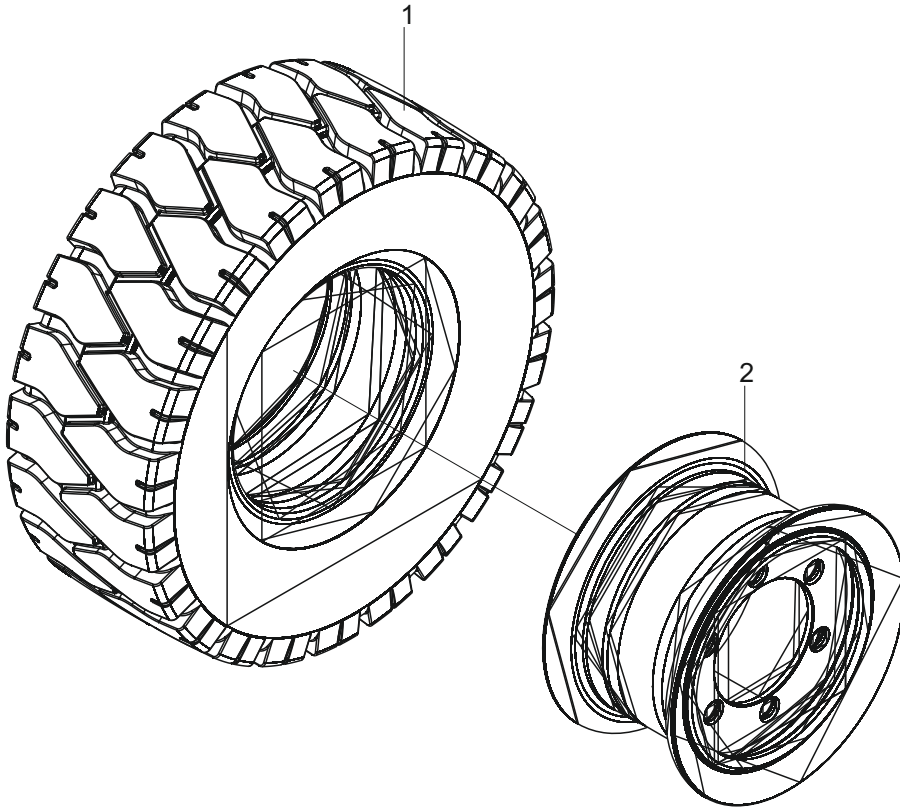
油泵总成/ Oil pump assembly

All



驱动轮总成 Tire assembly

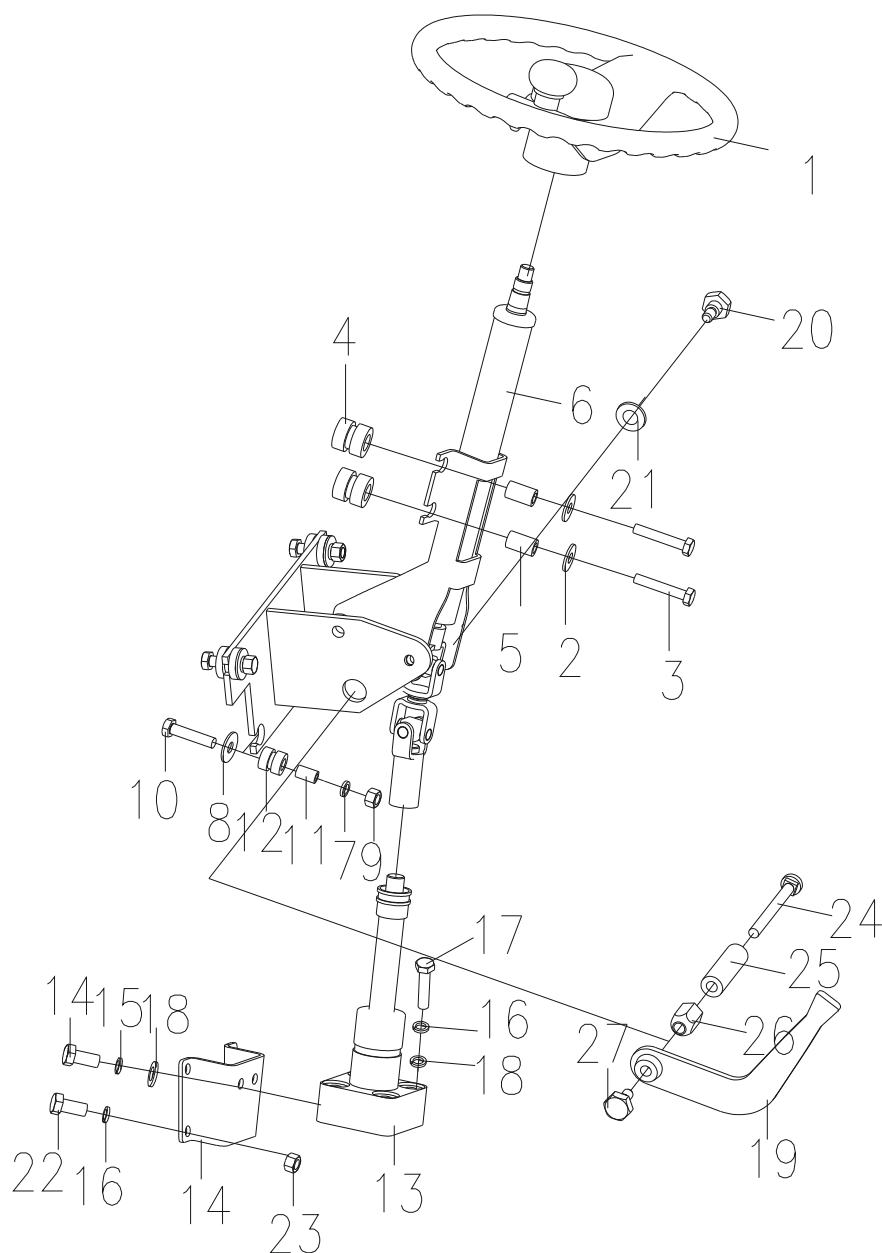
All



序号 Item No	编 码 Code	零部件名称 Description	数量 Q'ty	备 注 Remark
1	E047F65FB	轮胎总成300-15-18PR	Tire assembly	2 4.5T-5T
	E047F65FD	轮胎总成8.25-15-14PR	Tire assembly	2 4T
2	E047F65FC	轮辋焊合8.00V-15	Rim Weldment	2 4.5T-5T
	E047F65DC	轮辋总成6.5-15	Rim Weldment	2 4T

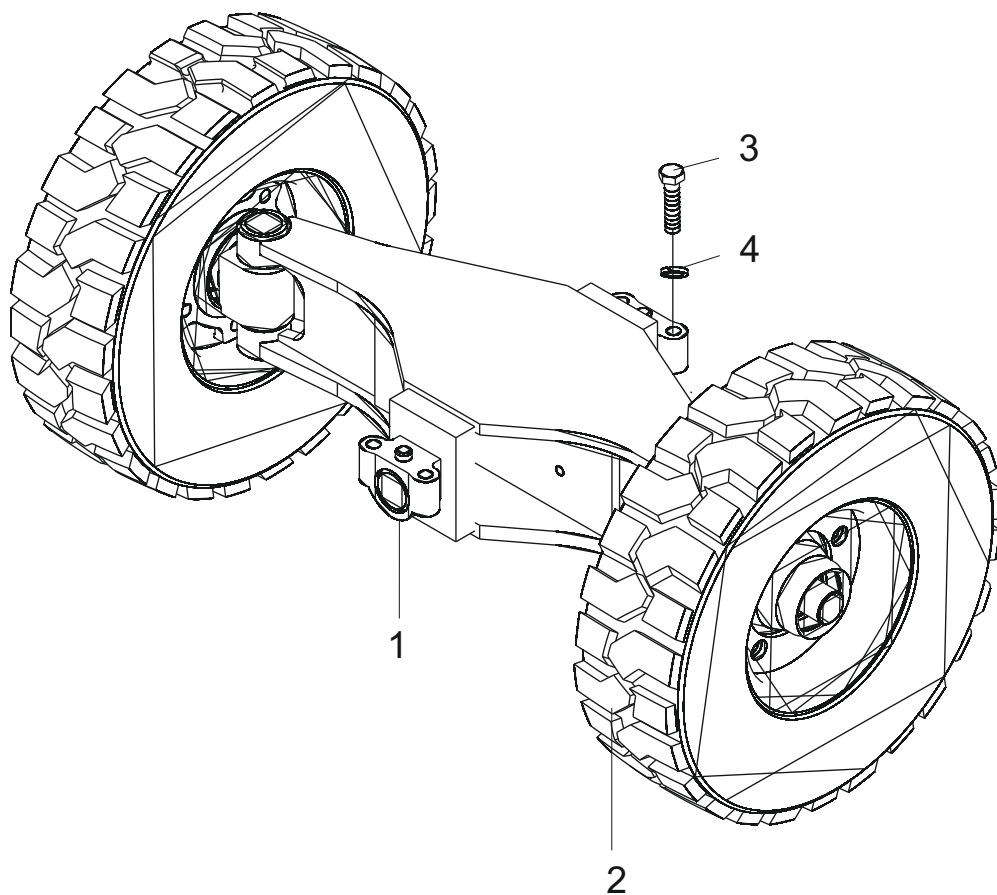
转向操纵总成/ Steering control assy.

All



转向桥总成 Steering axle assembly

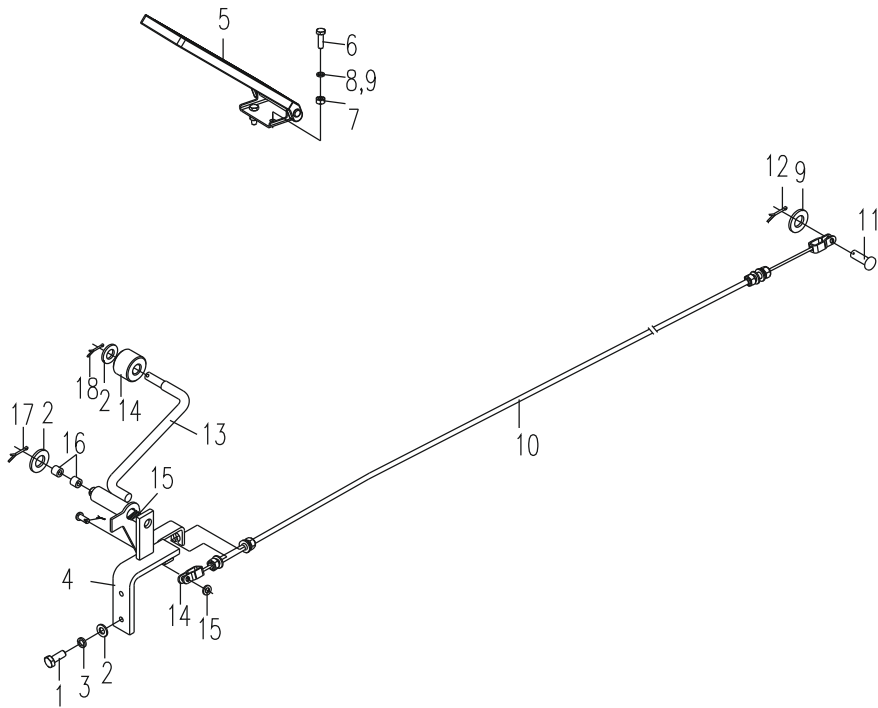
All



序号 Item No	编 码 Code	零部件名称 Description	数量 Q'ty	备 注 Remark
1	6FC51FCB4	转向桥总成 Steering axle assembly	1	
2	6FC51F98D	转向轮总成 Steering wheel assembly	2	
3	BEC5CE9DE	螺栓M20×1.5×90 Bolt M20×1.5×90	4	
4	BF7BF4E9B	垫圈20 Washer 20	4	

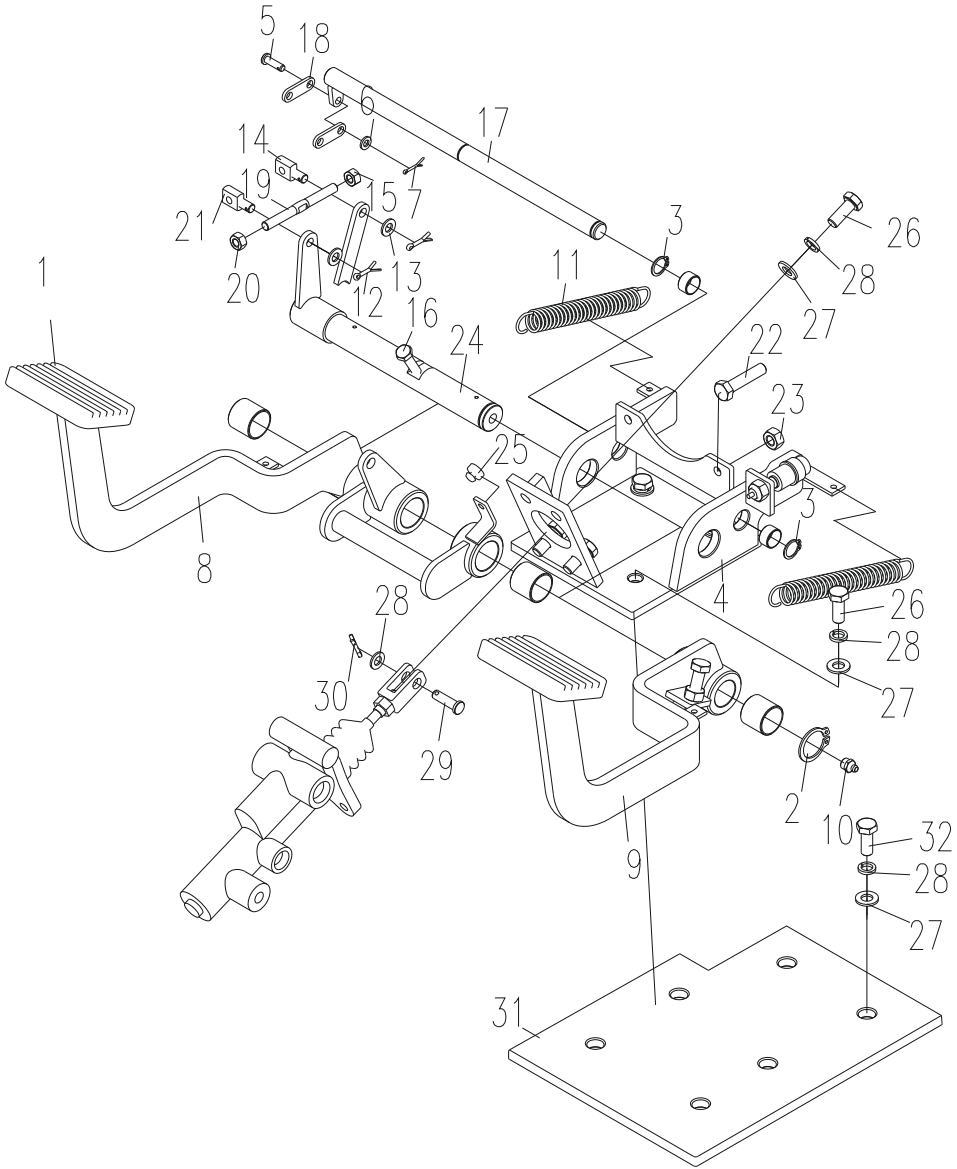
油门操纵总成/ Throttle control assy.

D40/45/50C-3M



行车制动与微动操纵 Brake & inching control

All

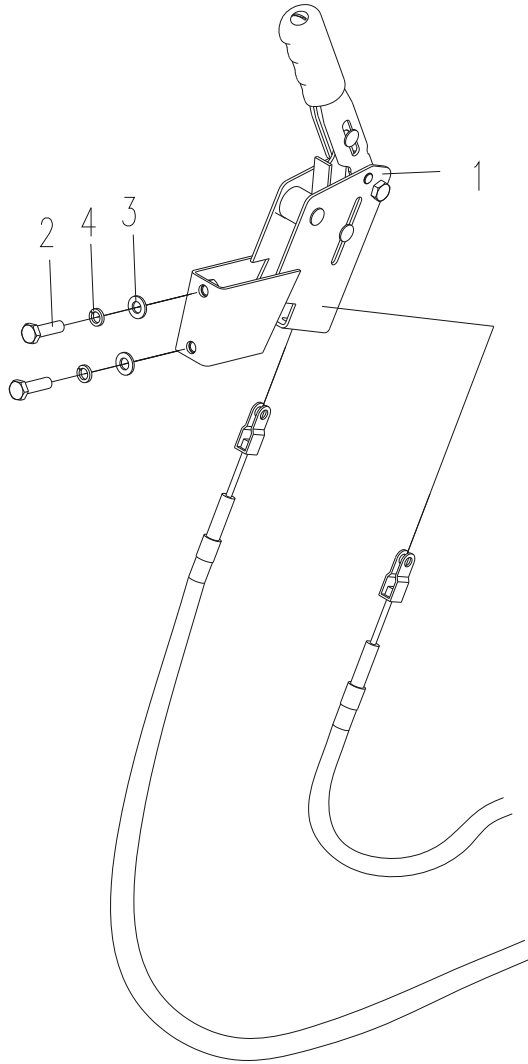


行车制动与微动操纵 Brake&inching control

序号 Item No	编 码 Code	零部件名称 Description	数量 Q'ty	备 注 Remark
1A	E27F66182	行车制动总成 Brake pedal assembly	1	含1-25项
1	E32B105B9	踏板垫 Pedal gasket	2	
2	BFADA232B	挡圈25 Snap ring 25	1	
3	BFAD986EB	挡圈20 Snap ring 20	4	
4	E220086E4	支架焊合 Bracket weldment	1	
5	BFE4C209A	销B6×25 Pin B6×16	2	
6	BF8EF6A33	垫圈6 Washer 6	2	
7	BFE5BAB81	销2×16 Pin 2×16	2	
8	E22008117	踏板总成 Pedal assembly	1	
9	E22008118	踏板总成 Pedal assembly	1	
10	D15D7356D	油杯M10×1 Oil cup M10×1	1	
11	E22008110	弹簧 Spring	2	
12	BFE5BFA69	销3.2×20 Pin 3.2×20	2	
13	BF8EF9143	垫圈8 Washer 8	1	
14	E22008114	固定块 Fixed block	1	
15	BF222B457	螺母M8 Nut M8	2	
16	BEC006D4E	螺栓M8×30 Bolt M8×30	1	
17	E220086E3	销轴焊合 Pin shaft weldment	1	
18	E220086DB	板 Plate	2	
	6FC810564	板 Plate	2	绍兴YQXD45VH2用
19	E22008116	螺柱 Stud	1	
20	BF222BCECF	螺母M8-LH Nut M8-LH	1	
21	E22008242	固定块 Fixed block	1	
22	BEC00958A	螺栓M10×45 Bolt M10×45	2	
23	BF222B4BB	螺母M10 Nut M10	2	
24	E22008123	转轴焊合 Rotation shaft weldment	1	
25	E22008115	缓冲垫 Damping cushion	1	
26	BEC2E6A5A	螺栓M10×1.25×25 Bolt M10×1.25×25	6	
27	BF8EFB853	垫圈10 Washer 10	6	绍兴YQXD45VH2用8件
28	BF7BE8B4B	垫圈10 Washer 10	7	绍兴YQXD45VH2用8件
29	BFE4C723E	销B10×25 Pin B10×25	1	
30	BFE5BFB31	销3.2×25 Pin 3.2×20	1	
31	6FC810563	板 Plate	1	绍兴YQXD45VH2用
32	BEC2E6ABE	螺栓M10×1.25×30 Bolt M10×1.25×30	2	绍兴YQXD45VH2用

停车制动操纵 Parking brake control

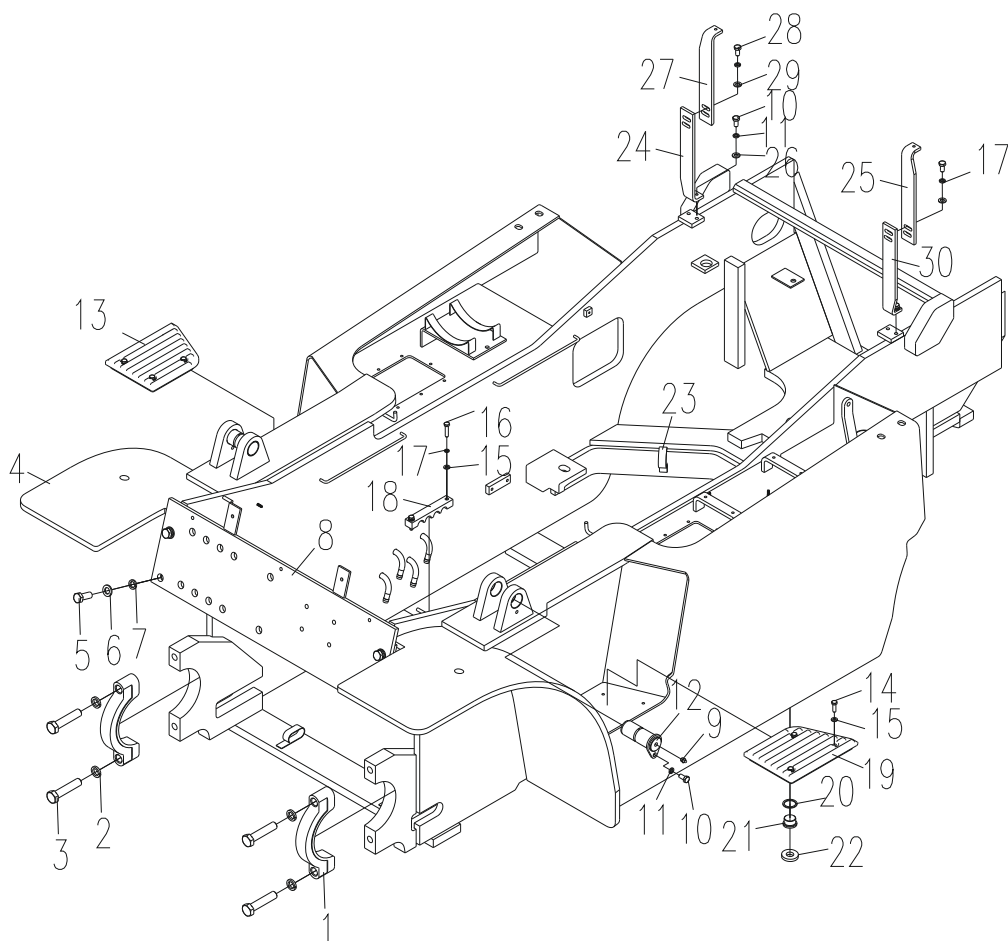
All



序号 Item No	编 码 Code	零 部 件 名 称 Description	数 量 Q'ty	备 注 Remark
1	E2DEC5952	手制动手柄总成 Handle assembly	1	
2	BEC0093FA	螺栓M10×25 Bolt M10×25	2	
3	BF8EFB853	垫圈10 Washer 10	2	
4	BF7BE8B4B	垫圈10 Washer 10	2	

车架/Frame

All

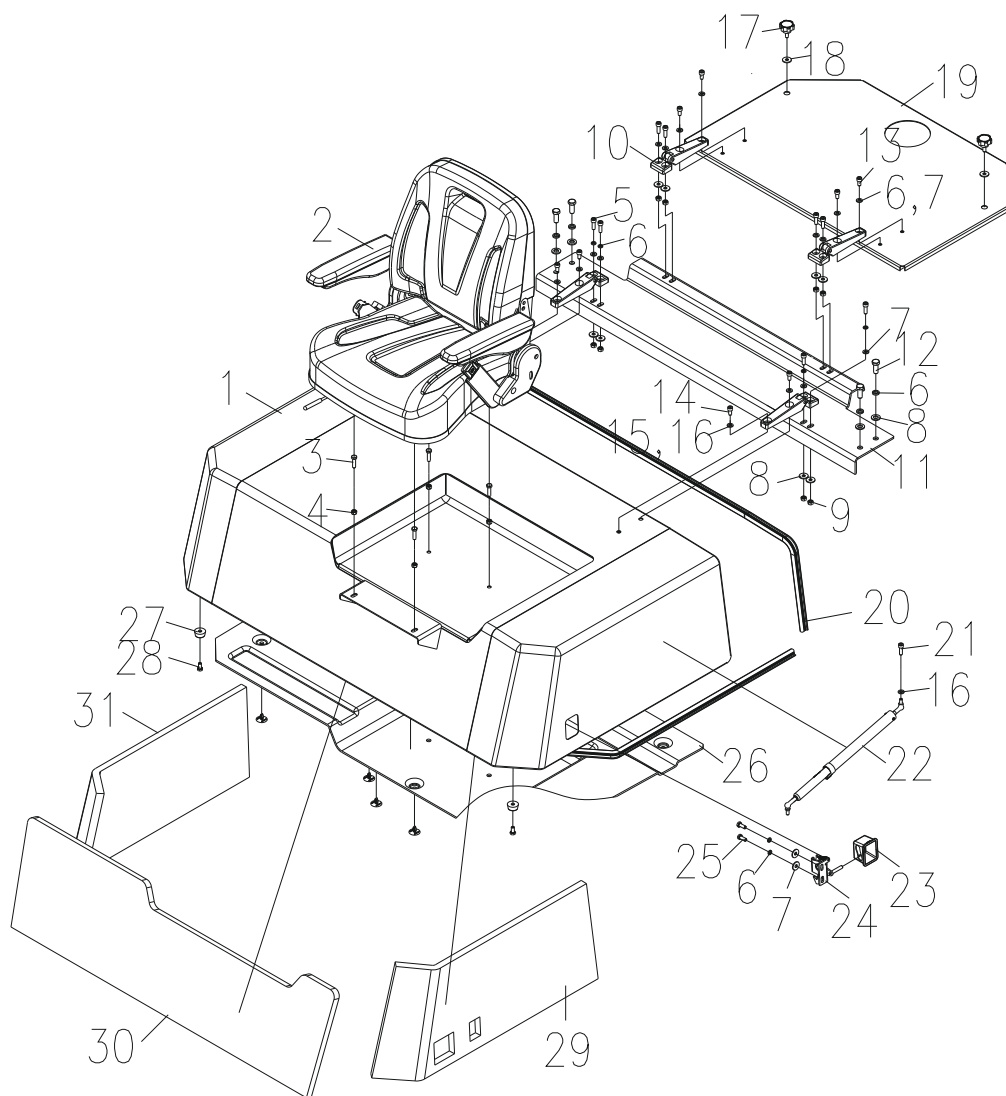


车架/Frame

序号 Item No	编 码 Code	零部件名称 Description	数量 Q'ty	备 注 Remark
1	E220080FD	端盖 End cover	2	
2	BF7BF4E9B	垫圈20 Washer 20	4	
3	BEC5CE84E	螺栓M20×1.5×70 Bolt M20×1.5×90	4	
4	6FC9E81CD	车架焊合 Frame weldment	1	锡柴配
	6FC9E81F2	车架焊合 Frame weldment	1	S6S配
5	BEC2ED116	螺栓M16×1.5×40 Bolt M16×1.5×40	4	
6	BF7BF007B	垫圈16 Washer 16	4	
7	BF8F02D83	垫圈16 Washer 16	4	
8	6FC9E151D	横梁焊合 Transverse weldment	1	
9	D15D7356D	油杯M10×1 Oil cup M10×1	2	
10	BEC009396	螺栓M10×20 Bolt M10×30	6	
11	BF7BE8B4B	垫圈10 Washer 10	6	
12	E220080FC	销轴焊合 Pin shaft weldment	2	
13	E22008950	踏板 Pedal	1	
14	BEC006CEA	螺栓M8×25 Bolt M8×25	6	
15	BF8EF9143	垫圈8 Washer 8	10	
16	BEC006DB2	螺栓M8×35 Bolt M8×35	4	
17	BF7BE643B	垫圈8 Washer 8	8	
18	6FC9F632E	管夹 Pipe clamp	2	
19	E2200894F	踏板 Pedal	1	
20	D129F6875	组合垫圈30 Combination washer 30	2	
21	D1BDC5C32	螺塞M30×1.5 Plug M30×1.5	2	
22	6FCA01858	磁铁70×32×15 Magnet 70×32×15	2	
23	6FC9F7448	塑料管 Plastic tube	2	
24	6FC9F7F17	支板 Pivot plate	1	
25	6FC9F7EF1	支架 Bracket	1	
26	BF8EFB853	垫圈10 Washer 10	4	
27	6FC9F7EF7	支架 Bracket	1	
28	BEC006C86	螺栓M8×20 Bolt M8×20	4	
29	BF8E04F09	垫圈8 Washer 8	4	
30	6FC9F7F18	支架 Bracket	1	

发动机机罩总成 Engine hood assembly

All

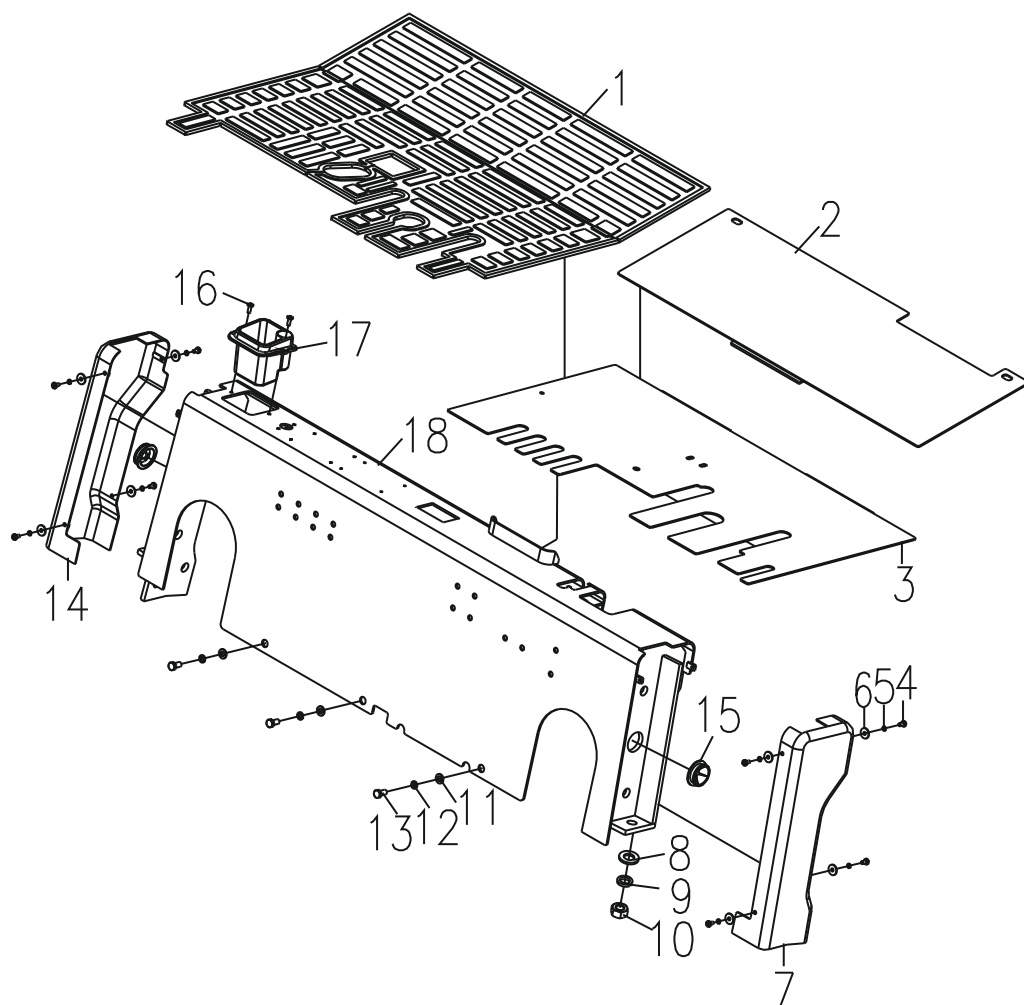


发动机机罩总成 Engine hood assembly

序号 Item No	编 码 Code	零部件名称 Description	数量 Q'ty	备 注 Remark
1	6FCADDE24	机罩焊合 Engine hood weldment	1	
2	E2F1D9AC2	座椅总成 Seat assembly	1	
3	BEC006D4E	螺栓M8×30 Bolt M8×30	4	
4	BF4850BFF	螺母M8 Nut M8	4	
5	BE8226D09	螺钉M8×25 Screw M8×25	8	
6	BF7BE643B	垫圈8 Washer 8	18	
7	BF8EF9143	垫圈8 Washer 8	14	
8	BF8E04F09	垫圈8 Washer 8	12	
9	BF222B457	螺母M8 Nut M8	4	
10	E220FE8EC	铰链 Hinge	4	
11	6FCAEEE6C	横板 Transverse plate weldment	1	
12	BEC006CEA	螺栓M8×25 Screw M8×25	4	
13	BE8226C41	螺钉M8×16 Screw M8×16	4	
14	BE822947D	螺钉M10×40 Screw M10×40	4	
15	BF7BE8B4B	垫圈10 Washer 10	4	
16	BF8EFB853	垫圈10 Washer 10	5	
17	6FCAF66B4	螺钉 Screw	2	
18	BF8E07619	垫圈10 Washer 10	2	
19	6FCADB5FA	盖板焊合 Cover plate weldment	1	
20	6FCAF6E24	密封条 Seal stripe	1	
21	BF25FBD5D	螺母M10 Nut M10	1	
22	E22008130	气弹簧 Air spring	1	
23	6FCAE96E4	方盒 Square box	1	
24	6FCADB90A	锁扣总成 Lock assembly	1	
25	BEC006C86	螺栓M8×20 Bolt M8×20	2	
26	E2200812A	隔热垫 Thermal gasket	1	
27	6FC9F67C9	减震垫 Damper gasket	2	
28	BEC006C22	螺栓M8×16 Bolt M8×16	2	
29	E22008133	吸声块 Sound absorption block	1	
30	E22008132	吸声块 Sound absorption block	1	
31	E22008134	吸声块 Sound absorption block	1	

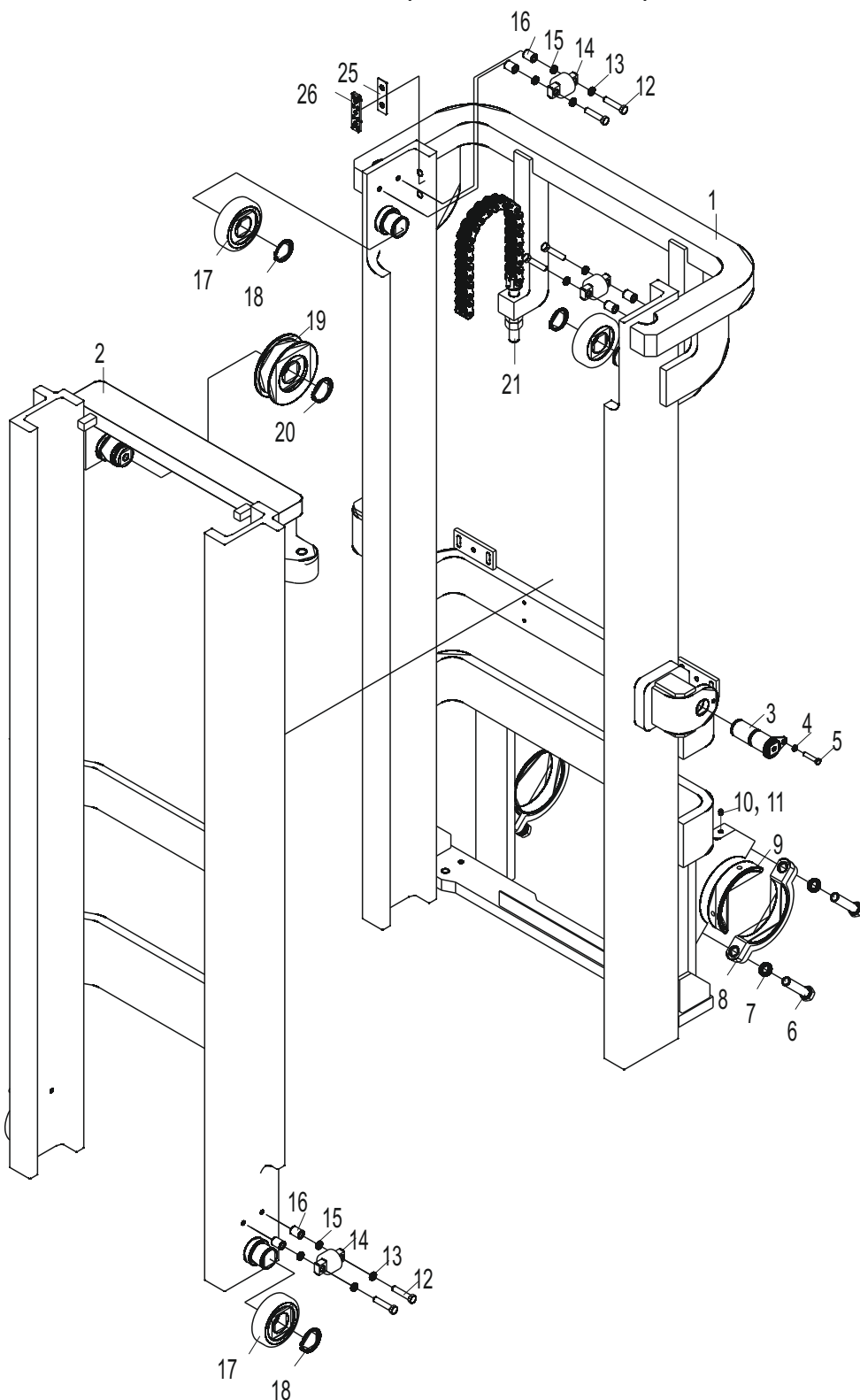
仪表架总成 Instrument assembly

All



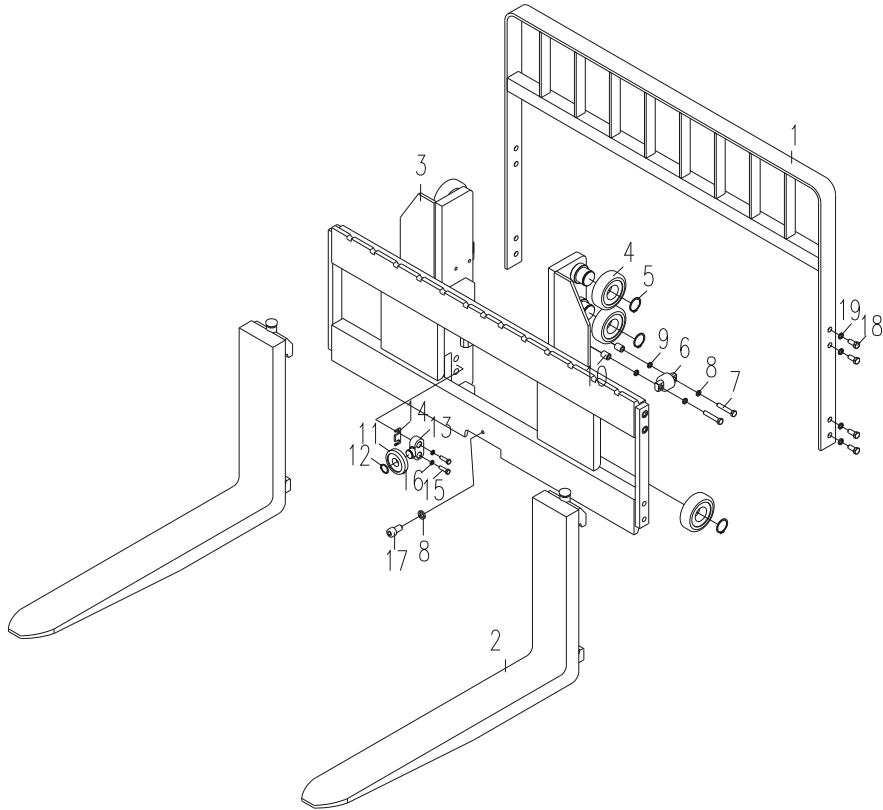
门架(基本型) Mast (normal mast)

All



货叉及货叉架(基本型)Fork & Lift bracket(normal mast)

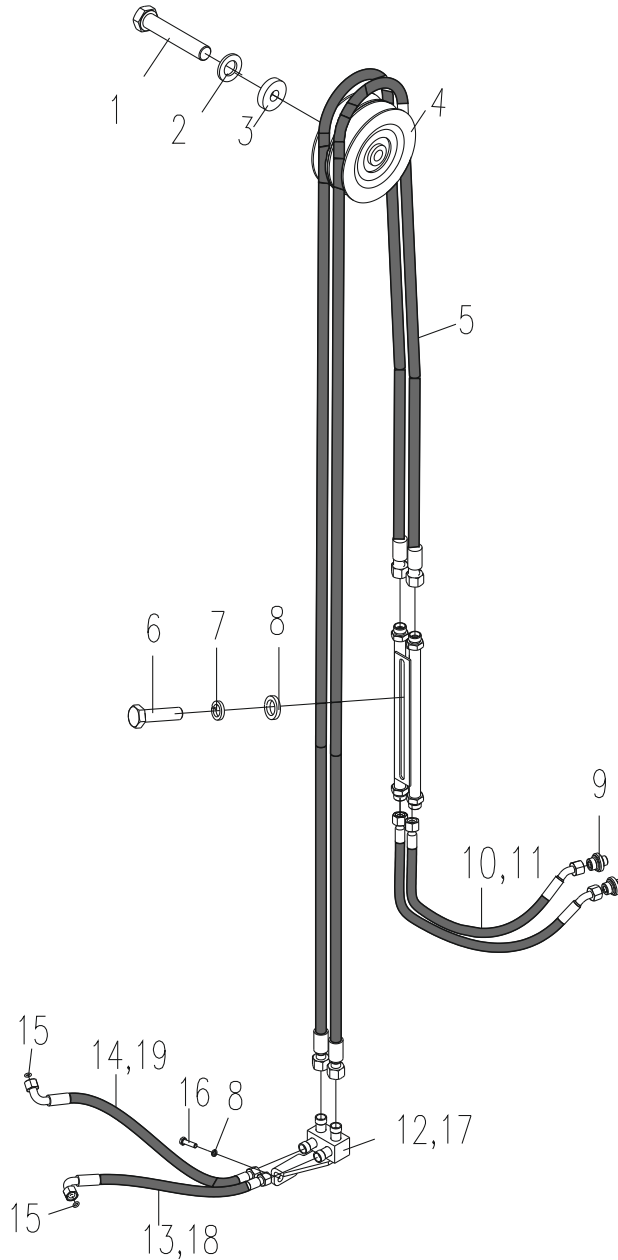
All



序号 Item No	货叉编码 Code, fork	货叉规格 Model, fork	备注 Remark
1	701452AB8	150X55X1070	标准
2	701452AB9	150X55X1220	
3	701452ABA	150X55X1370	
4	701452ABB	150X55X1520	
5	701452ABC	150X55X1670	
6	701452ABD	150X55X1820	
7	701452ABE	150X55X1900	
8	701452ABF	150X55X2000	

侧移管路总成 Sideshift pipe assembly

All



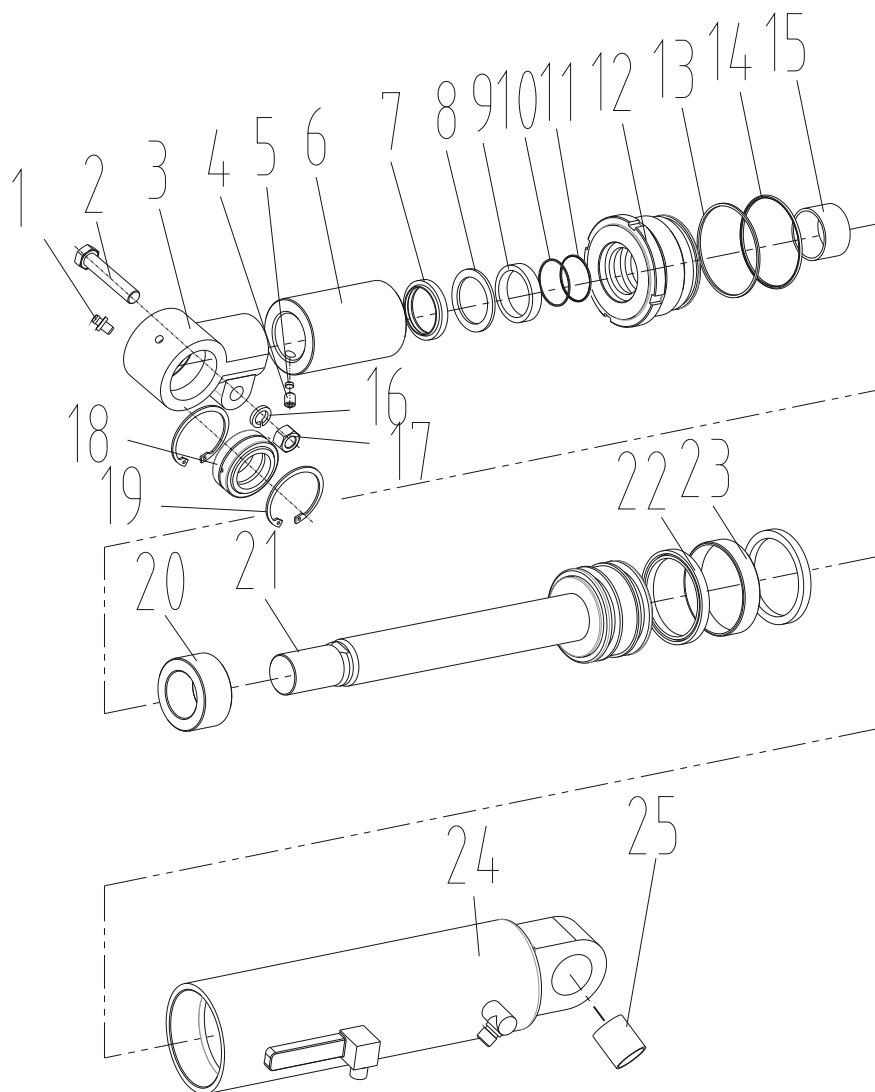
起升高度 (mm) Lifting height	2000	2500	2700	3000	3300	3500	3700	4000
件6胶管 Hose, No. 6	172720 10332	172720 10333	172720 10334	172720 09174	172720 08639	172720 08635	172720 10335	172720 10336
起升高度 (mm) Lifting height	4500							
件6胶管 Hose, No. 6	172720 08639							

起升油缸/ lift cylinder

序号 Item No	编 码 Code	零部件名称 Description	数量 Qty	备 注 Remark
A	3DD73F24A	5T3m起升油缸 Lift cylinder	2	含1-20项
1	E39D803B9	防尘圈50×62×7 Dustproof ring	2	
2	D1501AE89	轴用密封圈50×60×7 ISI-seal ring d50	2	
3	885882628	缸盖 Cap cylinder	4	
4	BE62A9893	螺钉M6×8 ScrewM6×8	2	
5	8858C900A	锁紧垫 Lock gasket	4	
6	D1281EADC	O形圈77.5×3.55 O-ring 77.5×3.55	4	
7	C393E778D	钢背轴承50×55×50 Steel-backed bearing	2	
8	8858D536E	支撑套 Support sheath	2	
9	885951BA8	活塞杆 Piston rod	2	按高度选用
10	88587FEF0	活塞 Piston	2	
11	D156C8E4D	O形圈50×3 O-ring 50×3	2	
12	88588C74A	间隔套 Spacer	2	按型号安装
13	D15B8D34D	支承环65×70×20 Pivot ring	2	按型号安装
14	D154E1CF1	挡圈60×70×3 Snap ring	2	
15	D153EA1A9	活塞密封圈70×60×7 Piston seal ring	2	
16	88588E6EE	环 Ring	2	
17	8858898A6	缓冲套 Buffering sheath	2	
18	BFB9DE8CB	挡圈30 Snap ring 30	2	
19	8858EB9C0	缸体 Cylinder body	2	按高度安装
20	BFE8A8862	圆柱销10×40 Cylindrical pin	2	
21	7014599A1	卡箍 Clamp	2	
22	70108A16C	橡胶垫 Rubber gasket	4	
23	70109B728	箍座 Clamp seat	4	
24	BEC2E935E	螺栓M12×1.25×50 Bolt M12×1.25×50	2	
25	BF2413747	螺母M12×1.25 Nut M12×1.25	2	
26	BF7BE8B4B	垫圈10 Washer 10	2	
27	BF8EFB853	垫圈10 Washer 10	2	
28	BF241367F	螺母M10×1.25 Nut M10×1.25	2	
29	70108F43D	轴套 Shaft sleeve	4	
30	BEC2E9232	螺栓M12×1.25×35 Bolt M12×1.25×35	2	
31	BF7BEB25B	垫圈12 Washer 12	2	
32	BF8EFD63	垫圈12 Washer 12	2	
33	701464A30	调整垫 Adjustable gasket	2	
34	BEC01593E	螺栓M20×50 Bolt M20×50	2	
35	BF7BF4E9B	垫圈20 Washer 20	4	

倾斜油缸/Lilt cylinder

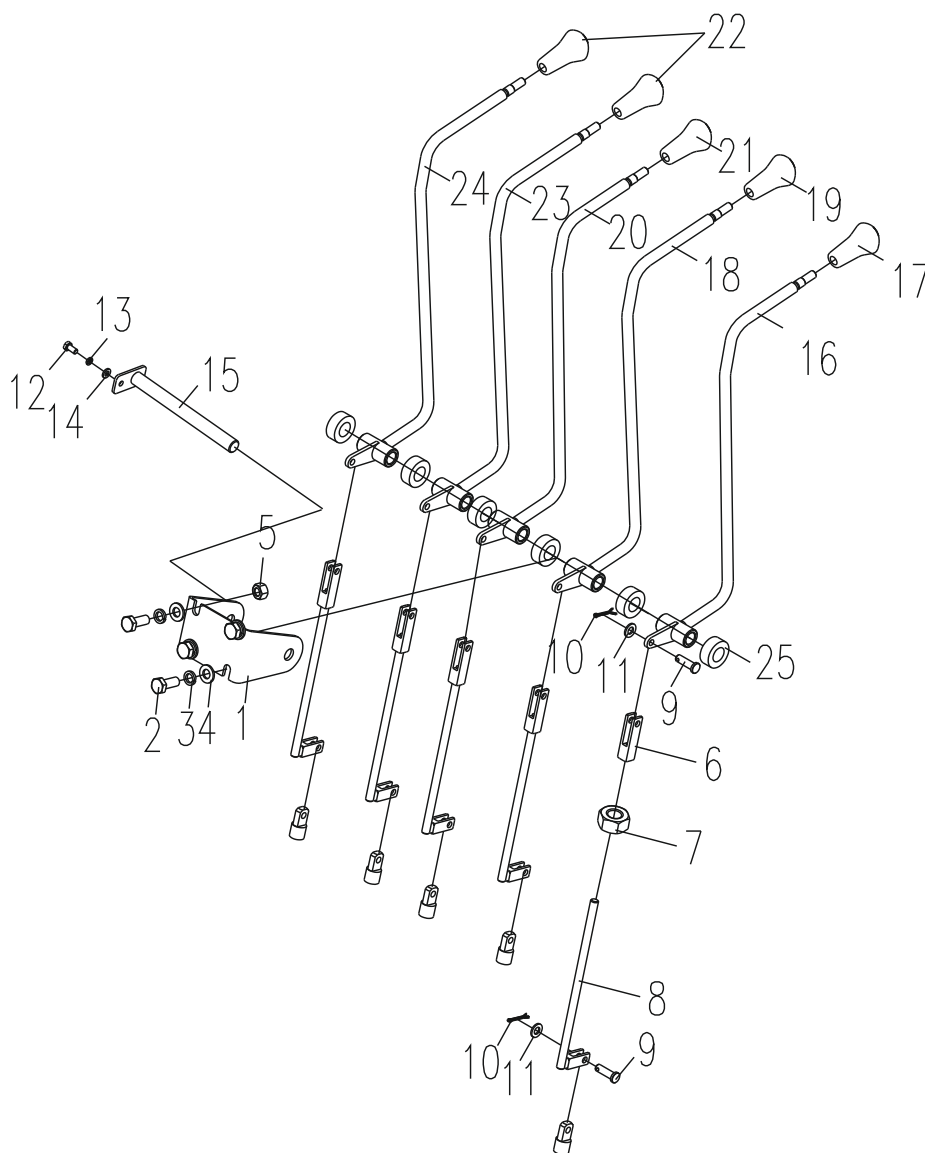
All



左缸 Left cylinder	右缸 Right cylinder	前/后倾角 Tilt angle	限位套 Spacer	备注 Remark
3DD70833A	3DD708362	6°-12°	—	
3DD708344	3DD70836C	6°-6°	88588CB82	
3DD70834E	3DD708376	3°-6°	88588CB82	
3DD708358	3DD708380	3°-3°	88588C4FC	

多路阀操纵 Multi-way valve control

All



多路阀操纵 Multi-way valve control

序号 Item No	编 码 Code	零 部 件 名 称 Description	数量 Q'ty	备 注 Remark
1	6FCCD2916	固定板 Fixed plate	1	二联用
	6FCCD2917	固定板 Fixed plate	1	三联用
	6FCCD2918	固定板 Fixed plate	1	四联用
	6FCCD2919	固定板 Fixed plate	1	五联用
2	BEC0093FA	螺栓M10×25 Bolt M10×25	4	
3	BF7BE8B4B	垫圈10 Washer 10	4	
4	BF8EFB853	垫圈10 Washer 10	4	
5	BF222B4BB	螺母M10 Nut M10	4	
6	6FCCDAEA8	连接叉 Connecting fork	2	三联3件/四联4件/五联5件
7	BF222B457	螺母M8 Nut M8	2	三联3件/四联4件/五联5件
8	6FCCC41D1	连接杆焊接 Connecting rod weldment	2	三联3件/四联4件/五联5件
9	BFE4C435E	销B8×26 Pin B8×26	4	三联3件/四联4件/五联10件
10	BFE5BD359	销2.5×20 Pin 2.5×20	4	三联3件/四联4件/五联5件
11	BF8EF9143	垫圈8 Washer 8	4	三联3件/四联4件/五联10件
12	BEC0044AE	螺栓M6×12 Bolt M6×12	1	
13	BF7BE3D2B	垫圈6 Washer 6	1	
14	BF8EF6A33	垫圈6 Washer 6	1	
15	6FCCBE66D	销轴焊接 Pin shaft weldment	1	二联用
	6FCCBE67A	销轴焊接 Pin shaft weldment	1	三联用
	6FCCBE67B	销轴焊接 Pin shaft weldment	1	四联用
	6FC42922A	销轴焊接 Pin shaft weldment	1	五联用
16	6FCCBD569	操纵杆焊接 Control joystick weldment	1	
17	E049E1121	手柄总成 Knob assembly	1	
18	6FCCBD56A	操纵杆焊接 Control joystick weldment	1	
19	E049E1120	手柄总成 Knob assembly	1	
20	6FCCBD56B	操纵杆焊接 Control joystick weldment	1	
21	E049E1122	手柄总成 Knob assembly	1	
22	E049E1123	手柄总成 Knob assembly	1	四联1件/五联2件
23	6FCCBD56C	操纵杆焊接 Control joystick weldment	1	
24	6FCCBD56D	操纵杆焊接 Control joystick weldment	1	
25	6FCCD2463	垫圈 Washer	3	三联4件/四联5件/五联6件

液压系统 Hydraulic system

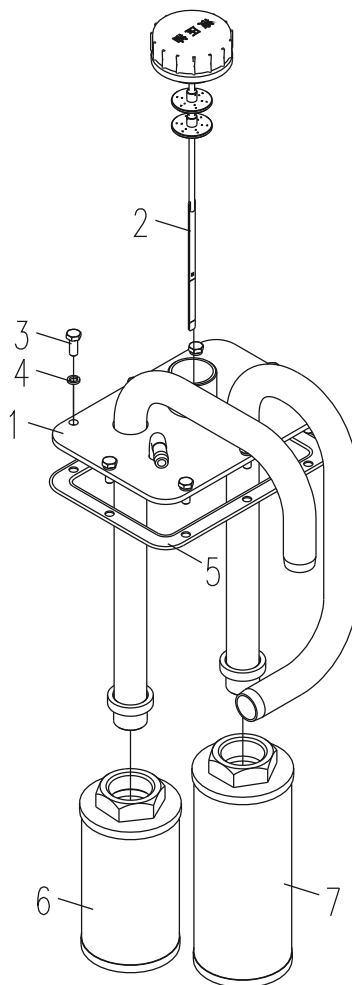
序号 Item No	编 码 Code	零 部 件 名 称 Description	数量 Q'ty	备 注 Remark
1	4057E0099	胶管总成 Hose assembly	2	
2	4057E009A	胶管总成 Hose assembly	2	
3	E22008173	钢管总成 Hose assembly	1	
4	E2200818B	铰接螺栓 Hinged bolt	1	
5	E2200818C	接头焊合 Connector weldment	1	
6	D1280CE18	O形圈21.2×2.65 O-ring 21.2×2.65	2	
7	E2200818A	铰接螺栓 Hinged bolt	1	
8	E2200818D	接头焊合 Connector weldment	2	
9	D1280C901	O形圈17×2.65 O-ring 17×2.65	4	
10	E0A28FEC9	制动阀总成 Brake valve assembly	1	
11	6FC349907	胶管Φ13×4-L=1700 Hose	1	
12	D140D79BD	喉箍d25(16~25) Hoop	10	
13	E22008189	铰接螺栓 Hinged bolt	1	
14	6FC3498F9	胶管Φ13×4-L=1500 Hose	1	
15	E0A28FECB	多路阀总成 Multi-way valve	1	二片
	E0A28FED6	多路阀总成 Multi-way valve	2	三片
	E0A28FED7	多路阀总成 Multi-way valve	3	四片
	E0A28FED8	多路阀总成 Multi-way valve	4	五片
16	BEC006CEA	螺栓M8×25 Bolt M8×25	6	
17	BF7BE643B	垫圈8 Washer 8	14	
18	BF8EF9143	垫圈8 Washer 8	12	
19	E22008170	钢管总成 Steel tube assembly	1	
20	41919F2E2	过渡接头 Transition connector	2	
21	D1280D06D	O形圈23.6×3.55 O-ring 23.6×3.55	4	
22	E22008C70	齿轮泵 Gear pump	1	
23	6FCDCD5F9	纸垫 Paper gasket	2	变速箱自带
24	BF120E830	螺栓M10×1.25×25 Stud M10×1.25×25	4	
25	BF8EFB853	垫圈10 Washer 10	4	
26	BF7BE8B4B	垫圈10 Washer 10	12	
27	BEC00945E	螺栓M10×30 Bolt M10×30	8	
28	E0A28FECD	法兰接头焊合 Flange connector weldment	1	
29	D1280D649	O形圈30×2.65 O-ring 30×2.65	2	
30	E2200816F	成型管 Molding pipe	1	
31	D140D7319	喉箍d50(32~50) Hoop d50(32-50)	6	
32	E22008C76	齿轮泵 Gear pump	1	
33	E0A28FECC	法兰接头焊合 Flange connector weldment	1	

液压系统 Hydraulic system

序号 Item No	编 码 Code	零 部 件 名 称 Description	数量 Q'ty	备 注 Remark
34	E2200816E	成型管 Molding pipe	1	
35	BEBF12D66	螺栓M8×60 Bolt M8×60	2	
36	6FCDDA535	回油管 Φ13×4-L=1070 Oil return pipe	1	
37	6FCDBE43A	液压油箱盖板总成 Cover plate assembly	1	
38	6FCDC6C2A	Pipe clamp	1	
39	E22008174	钢管总成 Steel tube assembly	1	
40	4057DFFBA	胶管总成 Hose assembly	1	
41	4057DFFB9	胶管总成 Hose assembly	1	
42	41919F31A	过渡接头 Transition connector	2	
43	D1280C5E1	O形圈13.2×2.65 O-ring 13.2×2.65	2	接头自带
44	6FCDDA52E	胶管 Φ13×4-L=1750 Hose	1	
45	4057DFFB8	胶管总成 Hose assembly	1	
46	4057DFFB7	胶管总成 Hose assembly	1	
47	E22008C56	钢管总成 Steel tube assembly	1	
48	E22008C57	钢管总成 Steel tube assembly	1	
49	4057E0098	胶管总成 Hose assembly	1	
50	6FC3498F3	胶管 Φ13×4-L=1650 Hose	1	
51	BEC00BE2A	螺栓M12×65 Bolt M12×50	4	
52	BF7BEB25B	垫圈12 Washer 12	4	
53	BF222B51F	螺母M12 Nut M12	4	
54	BF8E09D29	垫圈12 Washer 12	8	
55	6FCDC83F2	橡胶垫 Rubber gasket	8	
56	6FCDA4BD	衬套 Bushing	4	
57	4057DFFB4	胶管总成 Hose assembly	1	
58	4057DFFB5	胶管总成 Hose assembly	1	
59	4057DFFB6	胶管总成 Hose assembly	1	
60	41919F393	过渡接头 Transition connector	2	
61	D129F66E5	组合垫圈22 Combination washer 22	2	
62	E22008192	过渡接头 Transition connector	1	
63	D129F6429	组合垫圈18 Combination washer 18	2	
64	4057DFFAF	胶管总成 Hose assembly	1	
65	E0A28FECE	分流阀总成 Distribution valve connector	1	
66	E22008193	过渡接头 Transition connector	1	
67	E2200816D	成型管 Molding pipe	1	
68	41919F301	过渡接头 Transition connector	2	
69	41919F30A	过渡接头 Transition connector	1	

液压油箱盖板 Hydraulic oil tank cover

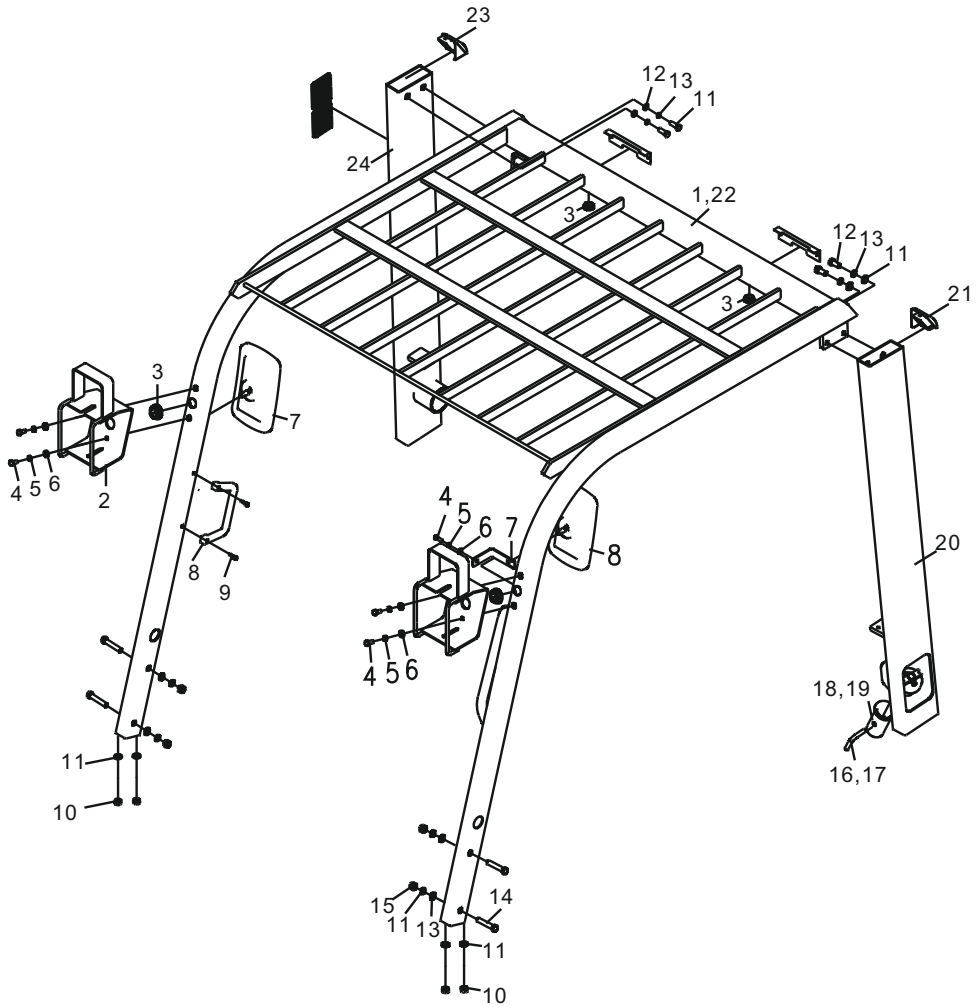
All



序号 Item No	编 码 Code	零部件名称 Description	数量 Q'ty	备 注 Remark
1	E22008175	液压油箱盖板焊合 Cover plate weldment	1	
2	6FCDB2D61	油尺总成 Oil dipstick assembly	1	
3	BEC006C86	螺栓M8×20 Bolt M8×20	8	
4	D129F6B31	组合垫圈8 Combination washer 8	8	
5	E220080F7	密封垫 Seal gasket	1	
6	E0A28FED0	滤芯总成 Filter element assy.	1	
7	E0A28FED1	滤芯总成 Filter element assy.	1	

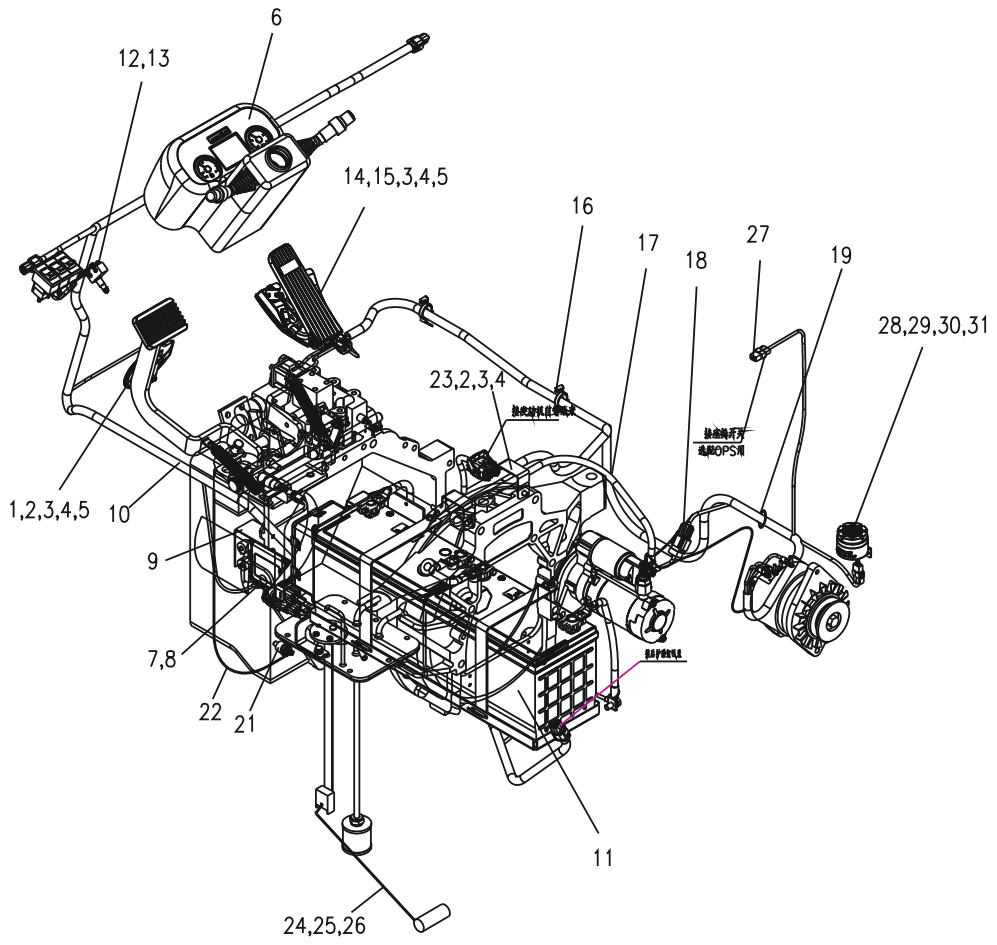
护顶架/Overhead guard

All



车架电气/Electric of frame

D40/45/50-3X

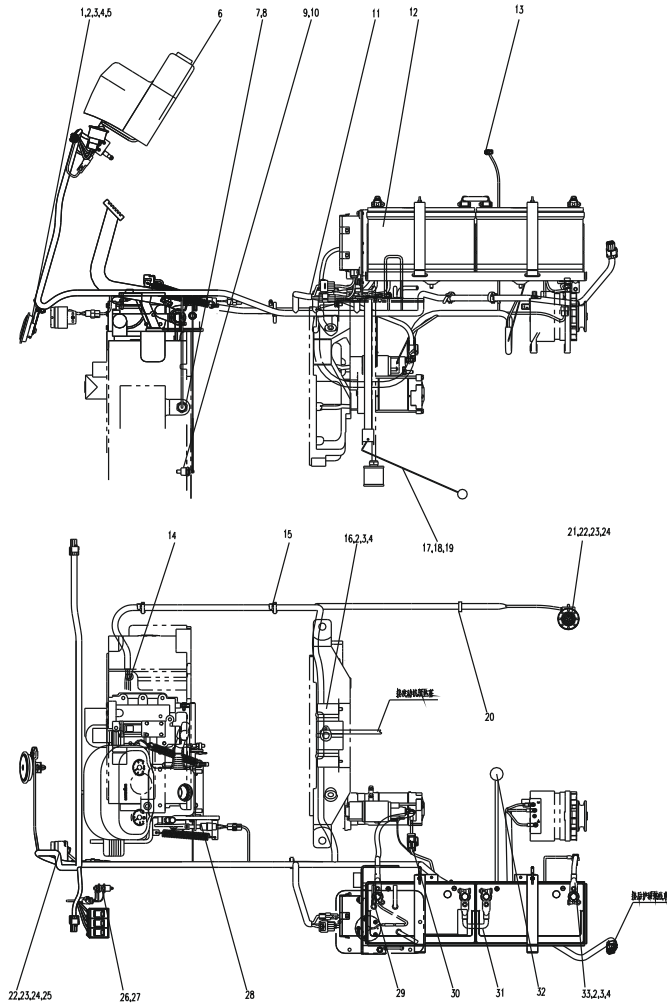


车架电气/Electric of frame

序号 Item No	编 码 Code	零部件名称 Description	数量 Q'ty	备 注 Remark
1	E102EE1EA	喇叭 Horn	1	
2	BEC006C22	螺栓M8×16 Bolt M8×16	3	
3	BF8EF9143	垫圈8 Washer 8	7	
4	BF7BE643B	垫圈8 Washer 8	5	
5	BF222B457	螺母M8 Nut 8	3	
6	6FD098138	电器元件总成 Electrical element assy.	1	
7	6FD0B06F5	速度传感器 Speed sensor	1	选配智能换挡
8	E220080D4	垫圈 Washer	1	选配智能换挡
9	6FD098139	电器元件总成 Electrical element assy.	1	
10	6FD0995F1	线束总成 Harness assy.	1	
11	6FD099774	蓄电池盒总成 Battery box assembly	1	
12	6FD0B07CA	微动开关 Inching switch	1	
13	BE9434784	螺钉M4×20 Screw M4×20	2	
14	6FD098BAF	加速踏板总成 Acceleration pedal assy.	1	
15	BEC006CEA	螺栓M8×25 Bolt M8×25	2	
16	E32B10ADE	扎带 Binding tape	50	
17	6FD099070	连接电缆 Connecting cable	1	
18	6FD09988F	易熔线 Fusible wire	2	
19	E32B0F723	扎带4×300 Binding tape	20	
20	6FD0990D7	连接线束 Connecting harness	1	选配液压OPS用
21	6FD0B0D37	温度报警开关 Temperature alarm switch	1	
22	6FD0990D8	连接线束 Connecting harness	1	选配油温传感器用
23	6FC349358	管夹 Pipe clamp	2	
24	6FD0B0CDD	油量传感器 Oil capacity sensor	1	
25	D129F3B25	组合垫圈5 Combination washer 5	5	
26	BE943BB24	螺钉M5×12 Screw M5×12	5	
27	6FD0990E5	连接线束 Connecting harness	1	OPS用
28	E102EE1EB	倒车蜂鸣器 Backup buzzer	1	
29	BE94408E0	螺钉M6×12 Screw M6×12	1	
30	BF8EF6A33	垫圈6 Washer 6	1	
31	BF7BE3D2B	垫圈6 Washer 6	1	
32	E106B763A	刹车灯开关 Brake lamp switch	1	
33	6FD098515	发动机线束 Engine harness	1	
34	6FD09906E	连接电缆 Connecting cable	1	
35	6FD097E08	地线电缆 Ground cable	1	

车架电气/Electric of frame

D40/45/50C-3M

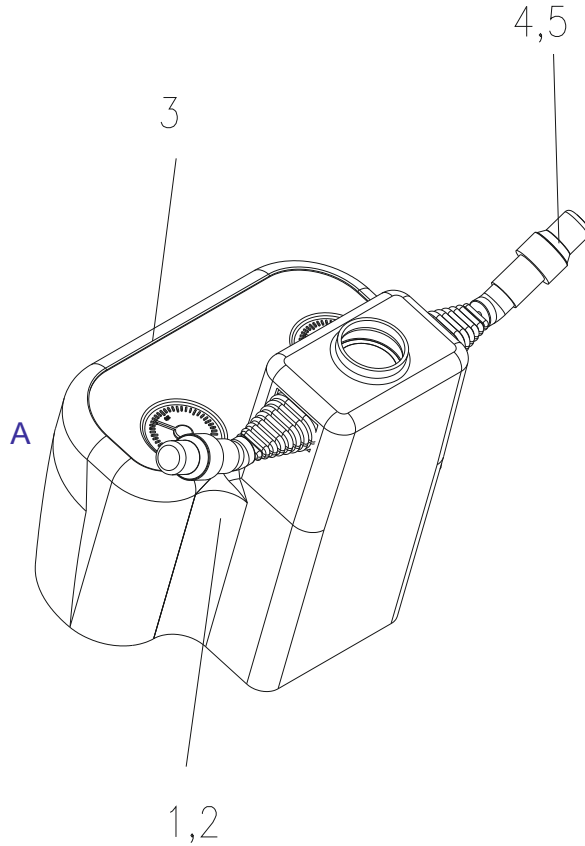


车架电气/Electric of frame

序号 Item No	编 码 Code	零部件名称 Description	数量 Qty	备 注 Remark
1	E102EE1EA	喇叭 Horn	1	
2	BEC006C22	螺栓M8×16 Bolt M8×16	3	
3	BF8EF9143	垫圈8 Washer 8	3	
4	BF7BE643B	垫圈8 Washer 8	1	
5	BF222B457	螺母M8 Nut 8	1	
6	6FD09815A	电器元件总成 Electrical element assy.	1	
7	6FD0B06F5	速度传感器 Speed sensor	1	选配智能换挡用
8	E220080D4	垫圈 Washer	1	选配智能换挡用
9	6FD0B0D37	温度报警开关 Temperature alarm switch	1	
10	6FD0990D8	连接线束 Connecting harness	1	油温传感器用
11	E101EE28D	线束总成 Harness assy.	1	
12	6FD09977F	蓄电池盒总成 Battery box assembly	1	
13	6FD0990E5	连接线束 Connecting harness	1	OPS用
14	6FD0990D7	连接线束 Connecting harness	1	选配液压OPS用
15	E32B10ADE	扎带 Binding tape	50	
16	6FC349358	管夹 Clip	2	
17	6FD0B0CDD	油量传感器 Oil capacity sensor	1	
18	D129F3B25	组合垫圈5 Combination washer	5	
19	BE943BB24	螺钉M5×12 Screw M5×12	5	
20	E32B0F723	扎带4×300 Binding tape4×300	20	
21	E102EE1EB	倒车蜂鸣器 Backup buzzer	1	
22	BE94408E0	螺钉M6×12 Screw M6×12	1	自动换挡数量为2
23	BF8EF6A33	垫圈6 Washer 6	1	自动换挡数量为2
24	BF7BE3D2B	垫圈6 Washer6	1	自动换挡数量为2
25	6FD0B0DFC	真空报警器 Vacuum alarm	1	
26	6FD0B07CA	微动开关 Inching switch	1	
27	BE9434784	螺钉M4×20 Screw M4×20	2	
28	E106B763A	刹车灯开关 Brake switch	1	
29	6FD099060	连接电缆 Connecting cable	1	
30	6FD09988E	易熔线 Fusible wire	1	
31	6FD09906E	连接电缆 Connecting cable	1	
32	6FD0B0CD9	水温传感器 Water temperature sensor	1	
33	6FD097E08	地线电缆 Ground cable	1	

仪表总成 Instrument assembly

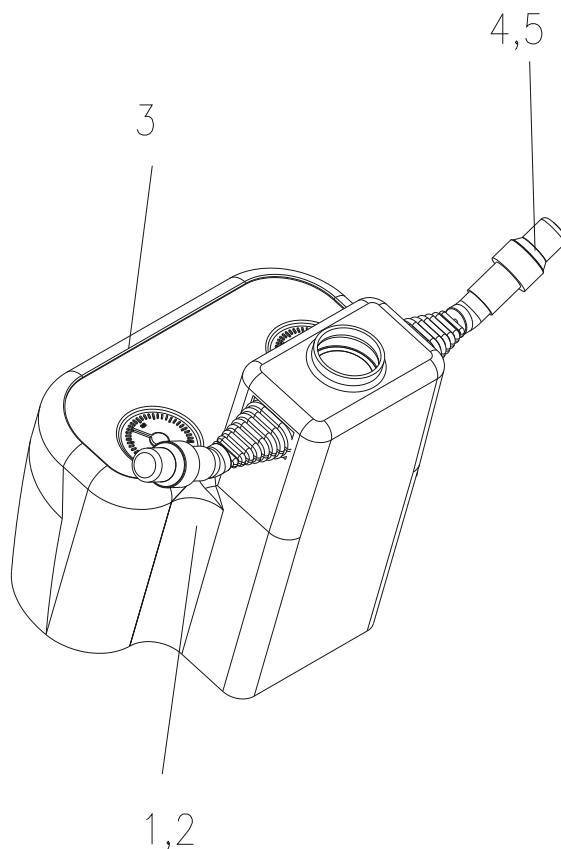
D40/45/50-3X



序号 Item No	编 码 Code	零 部 件 名 称 Description	数 量 Q'ty	备 注 Remark
1	BEC00463E	螺栓M6×30 Bolt M6×30	4	
2	BF978BE72	垫圈6 Washer 6	4	
3	6FD0B0C2C	仪表总成 Instrument assembly	1	
4	E101EDF5E	组合开关 Instrument switch	1	电液变速箱
5	E106B758F	组合开关 Instrument switch	1	机械液力变速箱

仪表总成/Instrument assembly

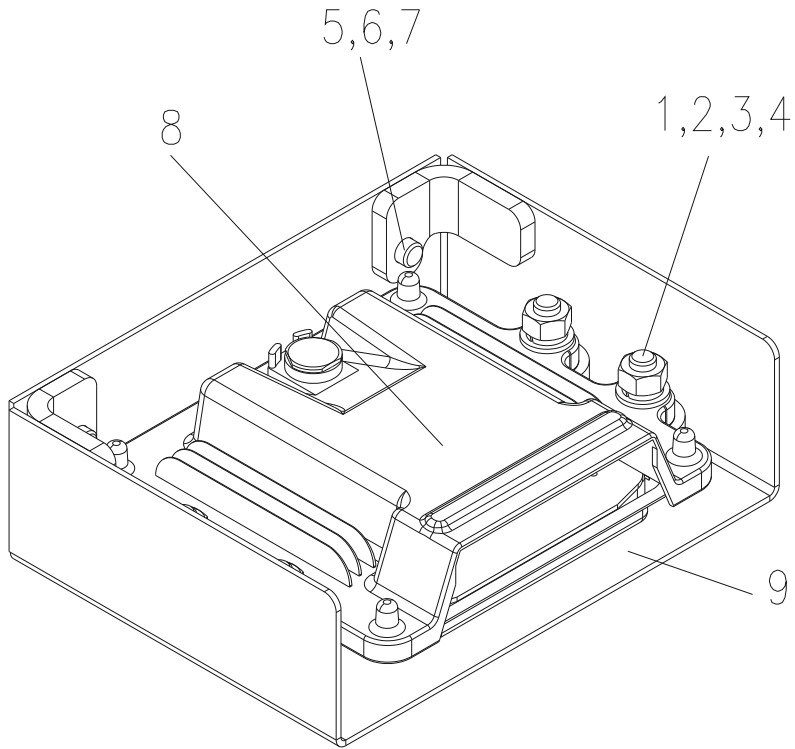
D40/45/50C-3M



序号 Item No	编 码 Code	零部件名称 Description	数量 Q'ty	备 注 Remark
1	BEC00463E	螺栓M6×30 Bolt M6×30	4	
2	BF978BE72	垫圈6 Washer 6	4	
3	6FD0B0C10	数字仪表(中) Digital instrument	1	国内用
4	E101EDE6C	数字仪表(英) Digital instrument	1	国外用
5	6FD0B0C1B	组合仪表 Combination instrument	1	指针仪表
6	E101EDF5E	组合开关 Combination switch	1	电液变速箱用
7	E106B758F	组合开关 Combination switch	1	机械液力变速箱用

控制器总成 Controller assembly

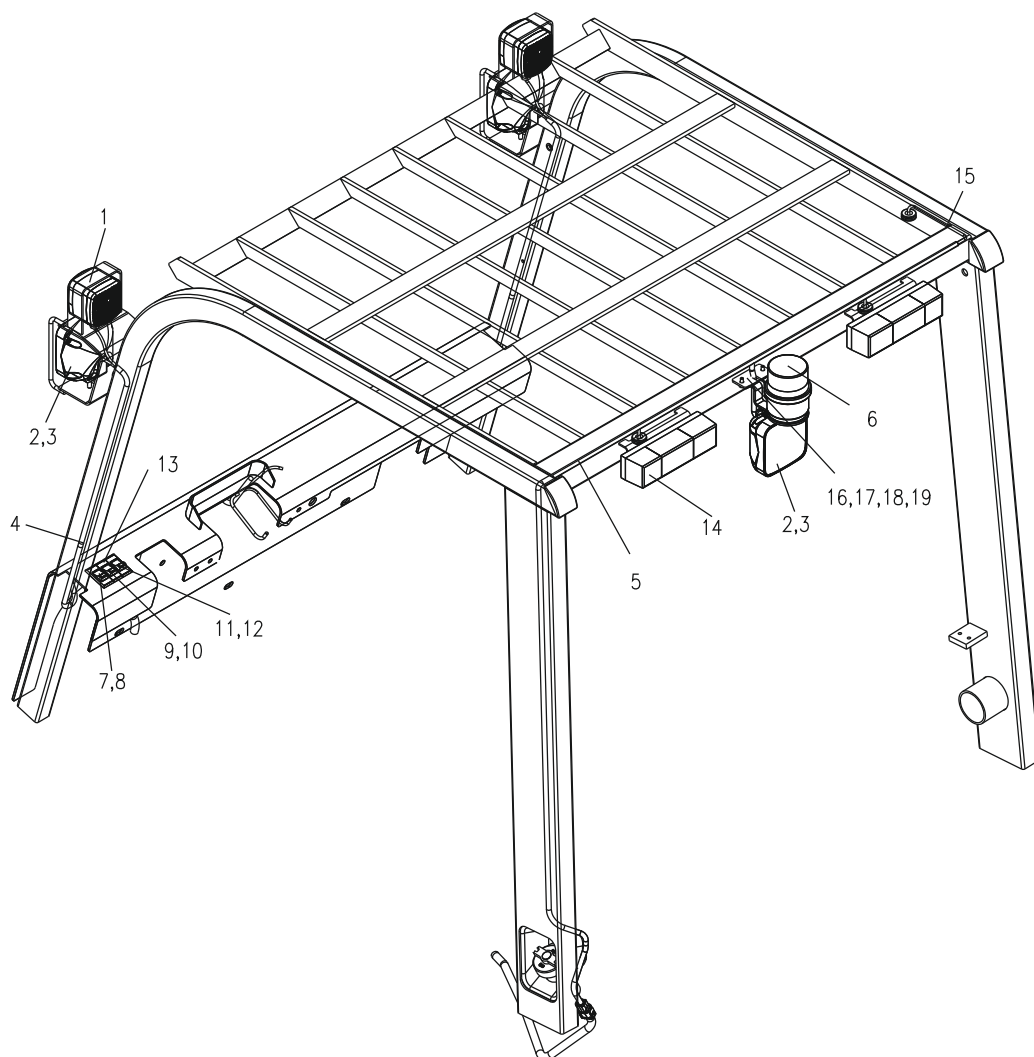
D40/45/50-3X



序号 Item No	编 码 Code	零部件名称 Description	数量 Q'ty	备 注 Remark
1	6FD0B0886	橡胶块 Rubber block	4	
2	BEC004706	螺栓M6×40 Bolt M6×40	4	
3	BF7BE3D2B	垫圈6 Washer 6	4	
4	BF8EF6A33	垫圈6 Washer 6	8	
5	BEC006C22	螺栓M8×16 Bolt M8×16	2	
6	BF8EF9143	垫圈8 Washer 8	2	
7	BF7BE643B	垫圈8 Washer 8	2	
8	6FD0B043A	控制器 Controller	1	
9	6FD0A4F12	支架 Bracket	1	

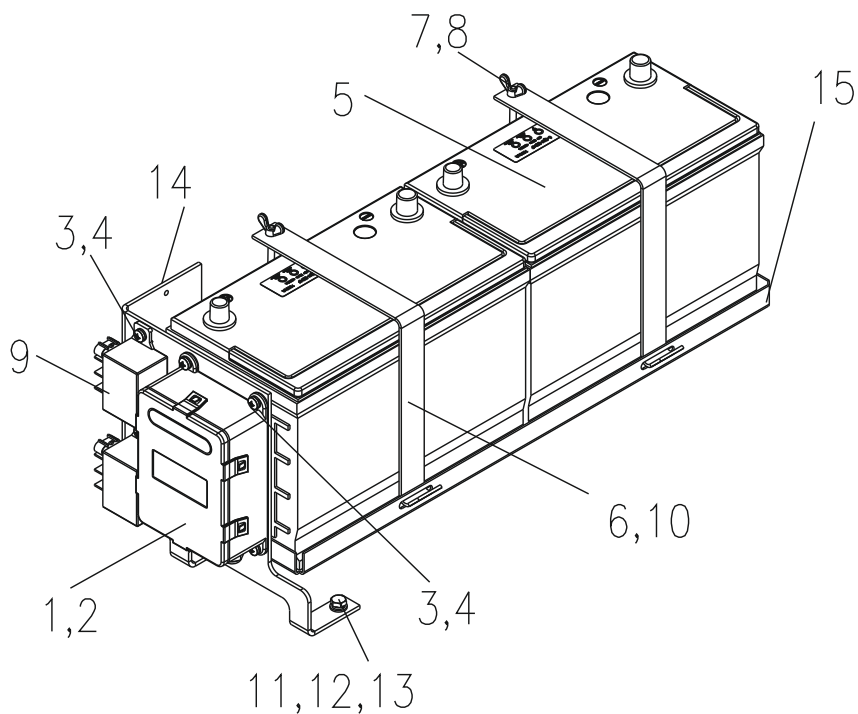
护顶架电气 Electric of overhead guard

All



蓄电池盒总成 Battery box assy.

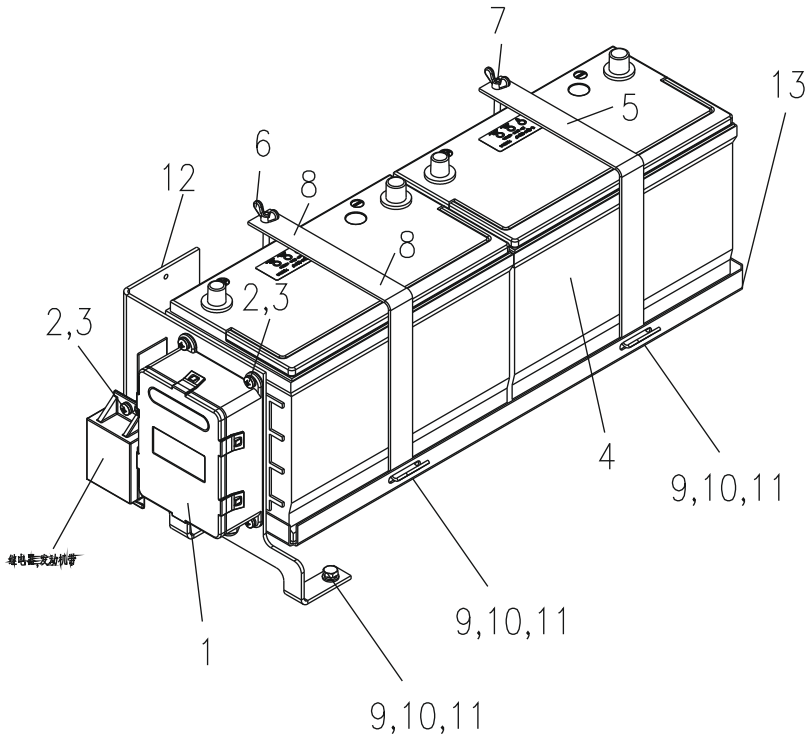
D40/45/50-3X



序号 Item No	编 码 Code	零 部 件 名 称 Description	数 量 Q'ty	备 注 Remark
1	6FD099BBC	控制盒 Control box	1	机械换挡用
2	6FD099BBD	控制盒 Control box	1	电液换挡用
3	BE94408E0	螺钉M6×12 Screw M6×12	8	
4	BF8EF6A33	垫圈6 Washer 6	8	
5	E102E938C	蓄电池 Battery box	2	
6	6FD0A4F13	支架 Bracket	2	
7	BF4EFDC14	螺母M6 Nut M6	2	
8	6FD0AD87C	固定杆 Fixed rod	2	
9	E106B9CBA	启动继电器 Starting relay	2	
10	6FD0B0887	橡胶块 Rubber block	4	
11	BEC006C22	螺栓M8×16 Bolt M8×16	6	
12	BF8EF9143	垫圈8 Washer 8	6	
13	BF7BE643B	垫圈8 Washer 8	6	
14	6FD0A4F14	支架 Bracket	1	
15	6FD08D47A	支架焊合 Bracket weldment	1	

蓄电池盒总成 Battery box assy.

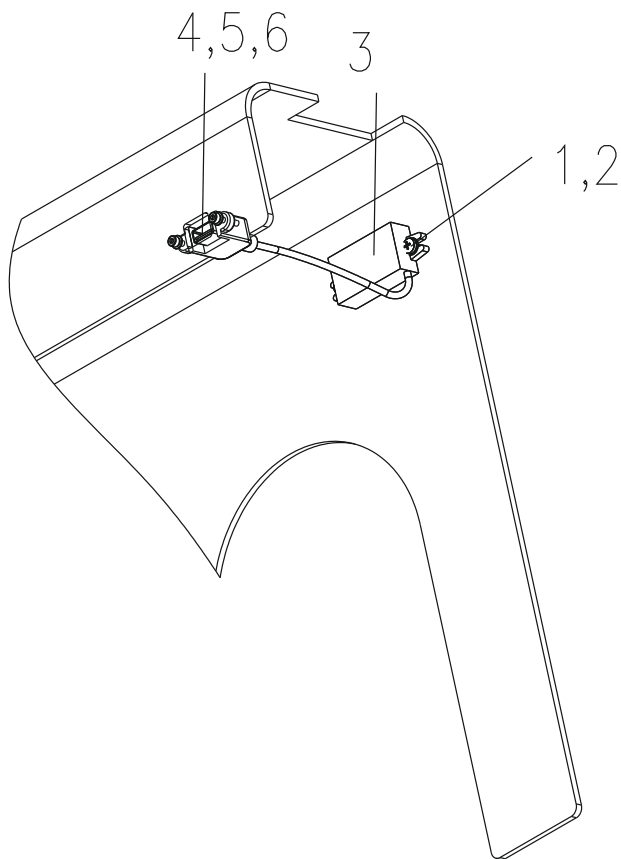
D40/45/50C-3M



序号 Item No	编 码 Code	零 部 件 名 称 Description	数量 Q'ty	备 注 Remark
1	E101EE28E	控制盒 Control box	1	
2	BE94408E0	螺钉M6×12 Screw M6×12	6	
3	BF8EF6A33	垫圈6 Washer 6	6	
4	E102E938C	蓄电池 Battery box	2	
5	6FD0A4F13	支架 Bracket	2	
6	BF4EFDC14	螺母M6 Nut M6	2	
7	6FD0AD87C	固定杆 Fixed rod	2	
8	6FD0B0887	橡胶块 Rubber block	4	
9	BEC006C22	螺栓M8×16 Bolt M8×16	6	
10	BF8EF9143	垫圈8 Washer 8	6	
11	BF7BE643B	垫圈8 Washer 8	6	
12	6FD0A4F14	支架 Bracket	1	
13	6FD08D47A	支架焊合 Bracket weldment	1	

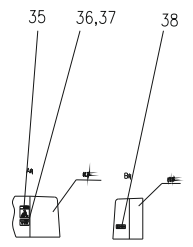
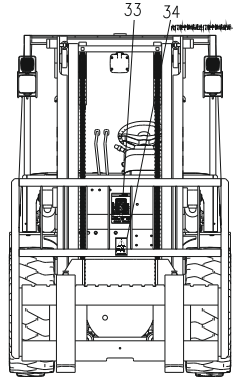
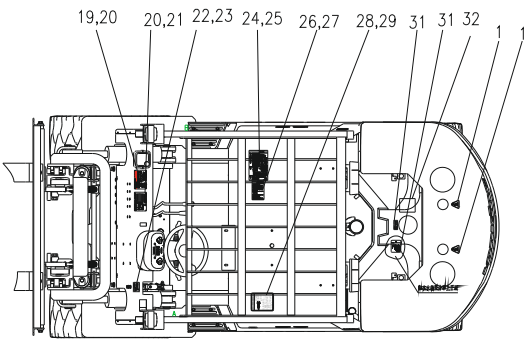
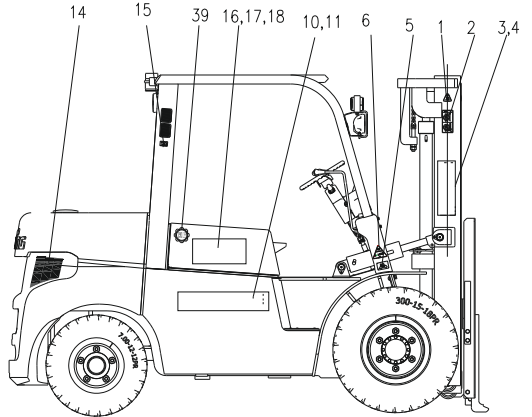
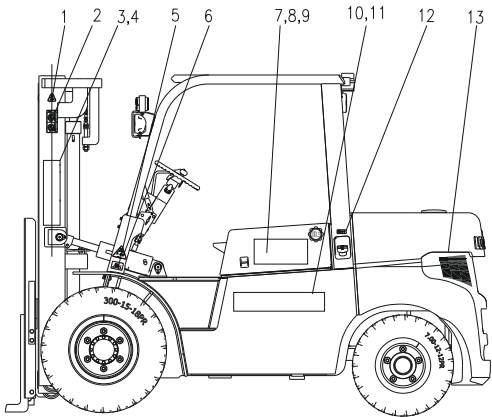
电器元件总成 Electrical element assy.

All



序号 Item No	编 码 Code	零 部 件 名 称 Description	数量 Q'ty	备 注 Remark
1	BE8215AD1	螺钉M4×10 Screw M4×10	2	
2	BF8EF1C13	垫圈4 Washer 4	2	
3	E101EE0AD	DC/DC转换器 DC/DC converter	1	
4	BF8DF8BB9	垫圈3 Washer 3	2	
5	BF7BDA0EB	垫圈3 Washer 3	2	
6	BE8270021	螺钉M3×16 Screw M3×16	2	

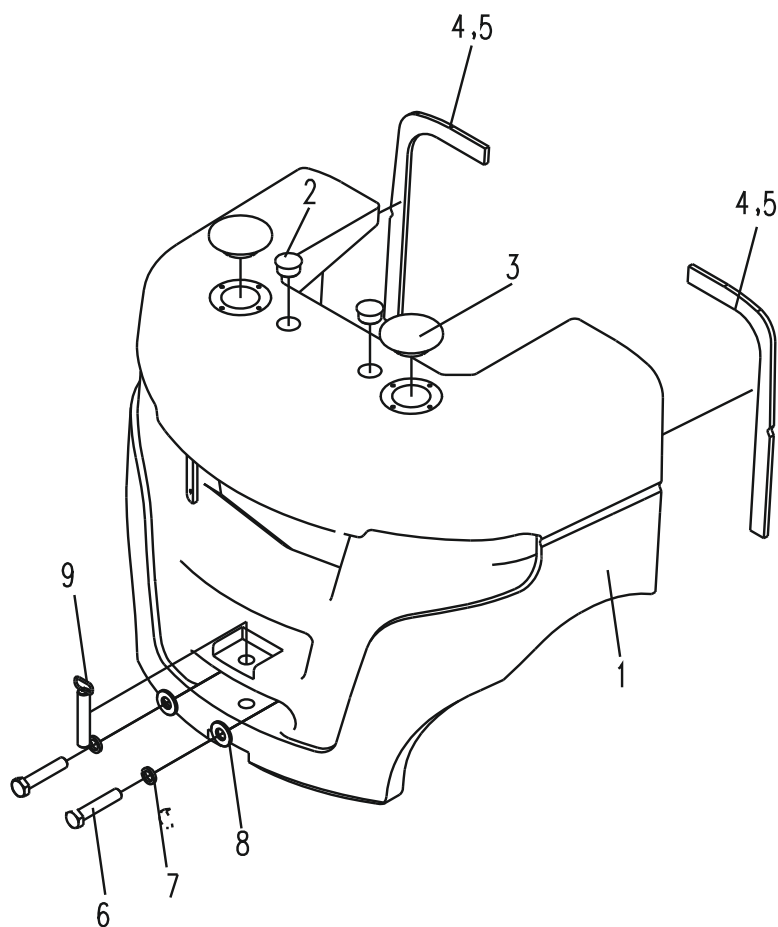
标牌/Decal



标牌/Decal

序号 Item No	编 码 Code	零部件名称 Description	数量 Qty	备 注 Remark
1	6FD1AD4AA	起吊点标牌 Hoist point label	4	
2	6FD1AD2B4	警示标牌货叉上下禁止停留 Do not stay on or under fork	1	
3	6FD1AD38F	龙工标志 TRF label	2	
4	6FD1AD38B	龙工标志 TRF label	2	
5	6FD1AD3F0	轮胎气压标牌 Tire pressure lable	1	
6	6FD1AD2C9	警示标牌轮胎拆卸 Dismantling the tire	2	
7	6FD1AD688	型号标牌 Model label	1	4t用
8	6FD1AD67E	型号标牌 Model label	1	4.5t用
9	E2DEC49CD	型号标牌 Model label	1	5t用
10	6FD1AD38C	龙工标志 TRF label	2	内销车用
11	6FD1AD390	龙工标志 TRF label	2	出口车用
12	6FD1AD76D	油品标牌燃油 Oil label-fuel	1	
13	6FD1AD9C0	反光贴 Reflector sticker	1	
14	6FD1AD9C1	反光贴 Reflector sticker	1	
15	6FD1AD2C2	警示标牌严禁冲水 Do not flush	1	
16	6FD1AD689	型号标牌 Model label	1	4t用
17	6FD1AD67F	型号标牌 Model label	1	4.5t用
18	E2DEC49CE	型号标牌 Model label	1	5t用
19	E22008246	载荷曲线标牌 Load curve label	1	
20	C01C07EAA	抽芯铆钉4×12 Blinded rivet 4×12	8	
21	6FD1AD44D	铭牌 Nameplate	1	
22	6FD1AD191	操纵说明标牌 停车制动调整 Adjustment of parking brake	1	内销车用
23	E2DEC4A0E	操纵说明标牌 停车制动调整 Adjustment of parking brake	1	出口车用
24	6FD1AD514	说明标牌 使用须知 Use instruction	1	内销车用
25	E2DEC4A11	说明标牌 使用须知 Use instruction	1	出口车用
26	6FD1AD512	说明标牌 启动前检查 Inspection before startup	1	内销车用
27	E2DEC4A10	说明标牌 启动前检查 Inspection before startup	1	出口车用
28	6FD1AD194	操作说明标牌 电子换向换挡 Electrical revesing and shifting label	1	内销车ops用
29	6FD1AD195	操作说明标牌 电子换向换挡 Electrical revesing and shifting label	1	出口车ops用
30	6FD1AD76B	油品标牌 防冻液 Oil label-antifreeze	1	
31	6FD1AD2C4	警示标牌勿伤手指 Do not hurt the finger	1	
32	12B711B360	防冻液标签-35℃ Antifreeze fluid label-35℃	1	
33	6FD1AD511	润滑点标牌 Lubricating point label	1	
34	7AFEB30B9	警示标牌勿伤手 Do not hurt the hand	2	
35	6FD1AD513	说明标牌 气弹簧安全锁 Safety lock of air spring	1	
36	6FD1AD892	油位标牌 Oil level label	1	内销车用

平衡重总成 Counter weight assembly



序号 Item No	编 码 Code	零 部 件 名 称 Description	数 量 Q'ty	备 注 Remark
1	E1C0A9F85	平衡重	1	5t
	E1C0A9F84	平衡重	1	4.5t
	E1C0A9F83	平衡重	1	4t
2	6FD297FBC	孔塞	2	
3	6FD297FBD	孔塞	2	
4	E220084C9	胶条	1	
5	E220084CA	胶条	1	
6	BEBE37CB6	螺栓M30×140	2	
7	BF7C011EB	垫圈30	2	
8	6FD28B1E3	垫圈	2	
9	6FD27A8A6	牵引销焊合	1	