



1-1.8t R 系列内燃平衡重式叉车
1-1.8t R Series Internal Combustion Counterbalanced Forklift Truck

门架零件目录

Mast Components Catalog

2 节门架, 2 节全自由门架, 三节门架

SIMPLEX, DUPLEX and TRIPLEX

浙江杭叉工程机械集团股份有限公司
ZHEJIANG HANGCHA ENGINEERING MACHINERY CO., LTD.

2010 年 02 月 第 4 版 Feb. 2010 4th EDITION

地址：中国浙江临安经济开发区东环路 88 号(制造地) 邮编：311305

全国客服热线：400-884-7888

电话：0571-88926666 88130499（总机号） 85191117

传真：0571-85199348

网站：<http://www.hzforklift.com> 电子邮件：hcpub@mail.hz.zj.cn



ZHEJIANG HANGCHA ENGINEERING MACHINERY CO., LTD

Manufacturing site:

88 Donghuan Road, LinAn Economic Development zone, Zhejiang, P.R.China ZIP:311305

Registered Address

398 Shi Qiao Road, Hangzhou, P.R. China) ZIP :310004

Fax: 0086-571-88132890 0086-571-88926789

Web: <http://www.hcforklift.com>

E-mail: sales@hcforklift.com



说 明

- 1、本“零件目录”汇集了 1—1.8t R 系列各种叉车的 2 级基本型门架、2 级全自由门架、3 级门架零部件。而 2 级基本型门架分 N 型门架和 R 型门架。
- 2、查询方法：
 - ①用户可根据叉车的额定载荷、门架的型式查找所需的零部件的序号，根据序号可查得相应的图号或标准号。
 - ②在目录的右上角表示此总成所适用的额定载荷、门架的型式，不通用零件在备注中说明，此外不同起升高度所对应的零件请在附表中区别查询。
- 3、订购零件时，须写明所用叉车的型号，出厂编号，门架高度，所需零部件代号、名称及订购数量。
- 4、维修更换零部件时，为确保质量，请使用本厂零部件。
- 5、为提高质量，本厂将对某些零部件进行改进，对改进部分在本目录中不能同时一一修改，请用户谅解，欲了解详细情况可与本公司销售公司及备件处联系。



INFORMATION

I .This catalogue collects all the parts (components) in series of 1-1.8 ton R fork lift trucks, such as SIMPLEX, DUPLEX and TRIPLEX .And SIMPLEX includes N and R types.

II .Looking up methods:

I) Users can lookup the part (component) series number according to the truck's rated load and mast types, and then you can find the drawing codes and standards of the part (the component) in terms of the series number.

II) On the top right corner, there is an expression of rated load and mast types which are applicable for this assembly. Furthermore , please lookup the parts(components)which used for different lift height distinctively in the Schedule.

III. When you order the parts (components), the truck's Model, factory number ,mast height, code Number of drawing, name and quantity should be given when ordering the parts or the components.

IV. It is recommended to use the parts and components made by us for ideal the service and maintenance.

V. We reserve the right of the change of the truck in construction for improving our products without notice. For the details of changes, please consult with sales department of Hangzhou Forklift Truck Co., ltd.

目录 Contents

序号 Item	名称 Description	适用车型 Series No.	页码 Page
图 1 Fig.1	起升组件 Lifting part	1-1.8t 2级门架 (R型) 1-1.8t SIMPLEX (R-TYPE)	1
图 2 Fig.2	起升组件 Lifting part	1-1.8t 2级门架 (N型) 1-1.8t SIMPLEX (N-TYPE)	4
图 3 Fig.3	链条总成 Chain	1-1.8t 2级门架 (R型) 1-1.8t SIMPLEX (R-TYPE)	8
图 4 Fig.4	链条总成 Chain	1-1.8t 2级门架 (N型) 1-1.8t S IMPLEX (N-TYPE)	10
图 5 Fig.5	门架 Mast	1-1.8t 2级门架 (R型) 1-1.8t SIMPLEX (R-TYPE)	13
图 6 Fig.6	门架 Mast	1-1.8t 2级门架 (N型) 1-1.8t S IMPLEX (N-TYPE)	15
图 7 Fig.7	货叉架总成 Fork assembly	1-1.8t 2级门架 1-1.8t SIMPLEX	17
图 8 Fig.8	左/右升降油缸 Lifting cylinder, left/right	1-1.8t 2级门架 1-1.8t SIMPLEX	1.8
图 9 Fig.9	倾斜油缸 Tilting cylinder	1-1.8t 2级门架 1-1.8t SIMPLEX	21
图 10 Fig.10	油路系统 Oil pipe system	1-1.8t 2级门架 1-1.8t SIMPLEX	23
图 11 Fig.11	起升组件 Lifting part	1-1.8t 2级全自由门架 1-1.8t DUPLEX	26
图 12 Fig.12	链条总成 Chain	1-1.8t 2级全自由门架 1-1.8t DUPLEX	30
图 13 Fig.13	门架 Mast	1-1.8t 2级全自由门架 1-1.8t DUPLEX	32

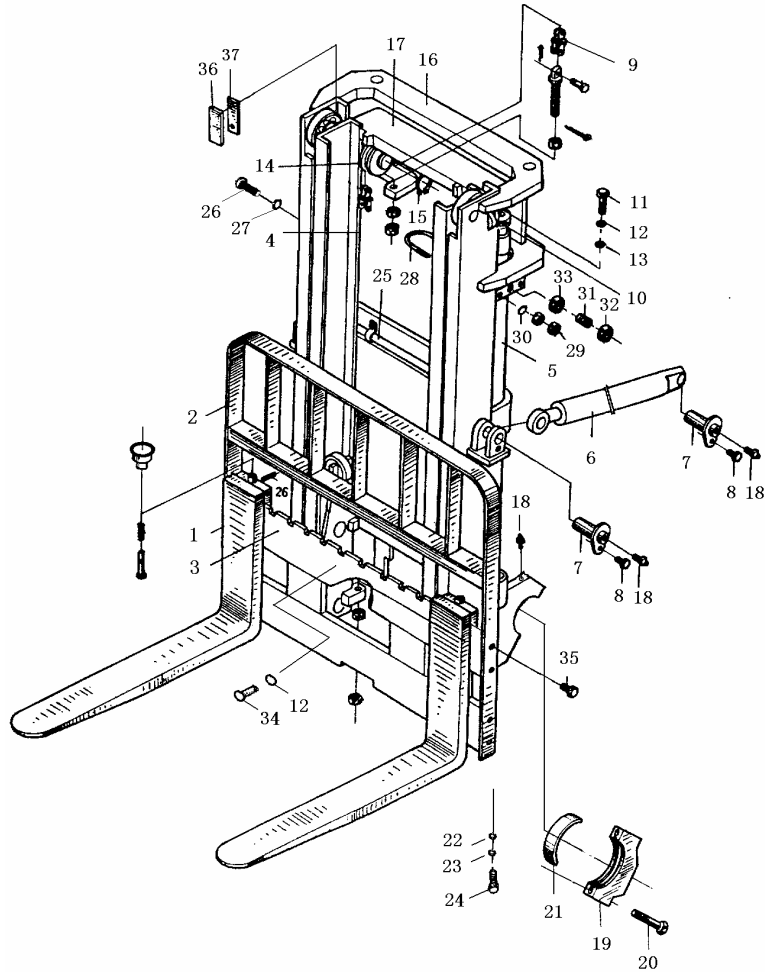
序号 Item	名称 Description	适用车型 Series No.	页码 Page
图 14 Fig.14	货叉架总成 Fork carriage assembly	1-1.8t 2级全自由门架 1-1.8t DUPLEX	34
图 15 Fig.15	左/右升降油缸 Lifting cylinder, left/right —2010.02	1-1.8t 2级全自由门架 1-1.8t DUPLEX	35
图 16 Fig.16	左/右升降油缸 Lifting cylinder, left/right 2010.03—	1-1.8t 2级全自由门架 1-1.8t DUPLEX	38
图 17 Fig.17	前升降油缸 Lifting cylinder, front —2010.02	1-1.8t 2级全自由门架 1-1.8t DUPLEX	41
图 1.8 Fig.1.8	前升降油缸 Lifting cylinder, front 2010.03—	1-1.8t 2级全自由门架 1-1.8t DUPLEX	43
图 19 Fig.19	油路系统 Oil pipe system —2007.8	1-1.8t 2级全自由门架 1-1.8t DUPLEX	46
图 20 Fig.20	油路系统 Oil pipe system —2010.02	1-1.8t 2级全自由门架 1-1.8t DUPLEX	49
图 21 Fig.21	油路系统 Oil pipe system 2010.03—	1-1.8t 2级全自由门架 1-1.8t DUPLEX	52
图 22 Fig.22	起升组件 Lifting part	1-1.8t 3级门架 1-1.8t TRIPLEX	55
图 23 Fig.23	链条总成 Chain	1-1.8t 3级门架 1-1.8t TRIPLEX	59
图 24 Fig.24	链条总成 Chain	1-1.8t 3级门架 1-1.8t TRIPLEX	61
图 25 Fig.25	门架 Mast	1-1.8t 3级门架 1-1.8t TRIPLEX	63
图 26 Fig.26	油路系统 Oil pipe system —2007.9	1-1.8t 3级门架 1-1.8t TRIPLEX	66

序号 Item	名称 Description	适用车型 Series No.	页码 Page
图 27 Fig.27	油路系统 Oil pipe system -2010.02	1-1.8t 3 级门架 1-1.8t TRIPLEX	70
图 28 Fig.28	油路系统 Oil pipe system 2010.03-	1-1.8t 3 级门架 1-1.8t TRIPLEX	74
图 29 Fig.29	货叉架总成 Fork carriage assembly	1-1.8t 3 级门架 1-1.8t TRIPLEX	78
图 30 Fig.30	左/右升降油缸 Lifting cylinder, left/right -2006.9	1-1.8t 3 级门架 1-1.8t TRIPLEX	79
图 31 Fig.31	左/右升降油缸 Lifting cylinder, left/right -2010.02	1-1.8t 3 级门架 1-1.8t TRIPLEX	82
图 31 Fig.31	左/右升降油缸 Lifting cylinder, left/right 2010.03-	1-1.8t 3 级门架 1-1.8t TRIPLEX	85
图 32 Fig.31	前升降油缸 Lifting cylinder, front 2010.03-	1-1.8t 3 级门架 1-1.8t TRIPLEX	87
图 31 Fig.31	倾斜油缸 Tilt cylinder	1-1.8t 3 级门架 1-1.8t TRIPLEX	90

图1
Fig.1

起升组件
Lifting part

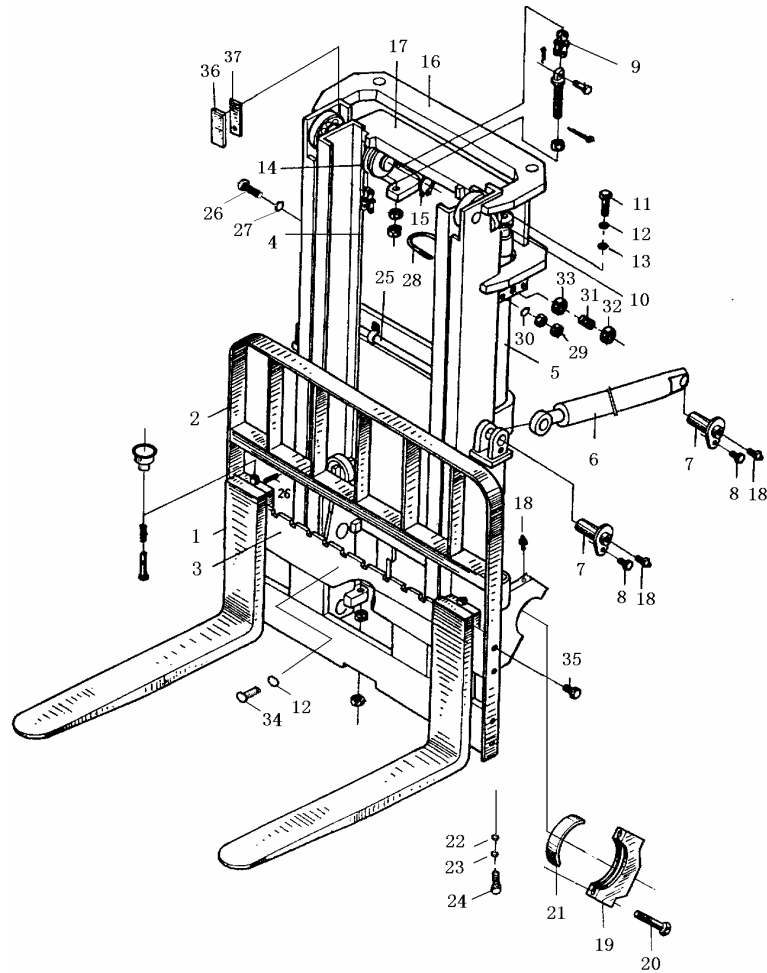
2级门架(R型) SIMPLEX(R-TYPE)
1-1.8t



序号 Item No.	代号 Part No.	名称 Description	数量 Q'ty	备注或适用车型 Remarks or Series No	物料码 Code No.
1	N15M300-010000-000	货叉总成 Fork assembly	2	1-1.5t	N15M300-01000 0-000
	N18M300-010000-000	货叉总成 Fork assembly	2	1.8t	N18M300-01000 0-000
2	N15M300-020000-002	挡货架 Load bracket	1		N15M300-02000 0-002
3	R15M300-300000-000	货叉架总成 Fork shelf assembly	1	Fig.7 1-1.5t	R15M300-30000 0-000
	R18M300-300000-000	货叉架总成 Fork shelf assembly	1	Fig.7 1.8t	R18M300-30000 0-000
4	N15M300-400000-000	右升降油缸 Lift cylinder,left	1	Fig.8	N15M300-40000 0-000
5	N15M300-500000-000	左升降油缸 Lift cylinder,right	1	Fig.8	N15M300-50000 0-000
6	N15M300-600000-002	倾斜油缸 Tilt cylinder	2	Fig.9	N15M300-60000 0-002
7	N15M300-001000-000	销轴 Pin shaft	4		N15M300-00100 0-000
8	N30M300-004000-000	螺栓 M10×1.25×20 Bolt M10×1.25×20	4		N30M300-00400 0-000
9	R15M300-030000-000	链条总成 Chain	2	Fig.3 1-1.5t	R15M300-03000 0-000
	R18M300-030000-000	链条总成 Chain	2	Fig.3 1.8t	R18M300-03000 0-000
10	N15M300-000012-000	油缸调整垫圈 Adjusting gasket	2		N15M300-00001 2-000
11	R15M300-000013-000	螺栓M12×1.25×40 Bolt M12×1.25×40	2		R15M300-00001 3-000
12	GB93-87	垫圈 12 Washer 12	3		GB93-87

图1 起升组件
Fig.1 Lifting part

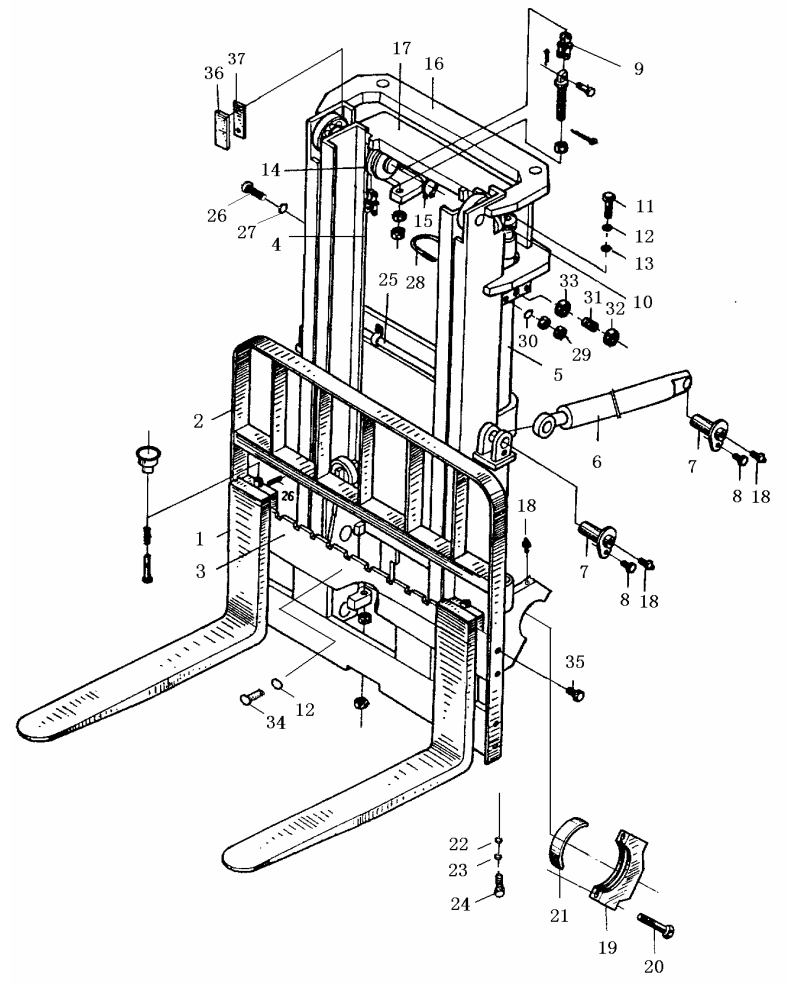
2级门架(R型) SIMPLEX (R-TYPE)
1-1.8t



序号 Item No.	代号 Part No.	名称 Description	数量 Q'ty	备注或适用车型 Remarks or Series No	物料码 Code No.
13	GB97.1-85	垫圈 12 Washer 12	3		
14	780708F1-G00	链轮 Chain wheel	2	1-1.5t	780708F1-G00
	780708A-G00	链轮 Chain wheel	2	1.8t	780708A-G00
15	GB894.1-86	挡圈 40 Snap ring 40	2		
16	R15M300-100000-000	外门架 Outer mast	1	Fig.5	R15M300-10000 0-000
17	R15M300-200000-000	内门架 Inner mast	1	Fig.5	R15M300-20000 0-000
18	GB1152-89	油杯 M10×1 Oil cup M10×1	6		
19	780708F1-G00	轴承盖 Bearing cap	2	-2008.3	780708F1-G00
	780708A-G00	轴承盖 Bearing cap	2	2008.4-	780708A-G00
20	GB894.1-86	螺栓 M14×1.5×45 Bolt M14×1.5×45	4		
21	R15M300-100000-000	轴瓦 Bearing liner	2		R15M300-10000 0-000
22	GB97.1-85	垫圈 8 Washer 8	2		R15M300-20000 0-000
23	GB93-87	垫圈 8 Washer 8	2		
24	GB70-85	螺钉 M8×30 Screw M8×30	2		
25	R15M300-700000-000	油路系统 Oil pipe system	1	Fig.10	R15M300-70000 0-000

图1 起升组件
Fig.1 Lifting part

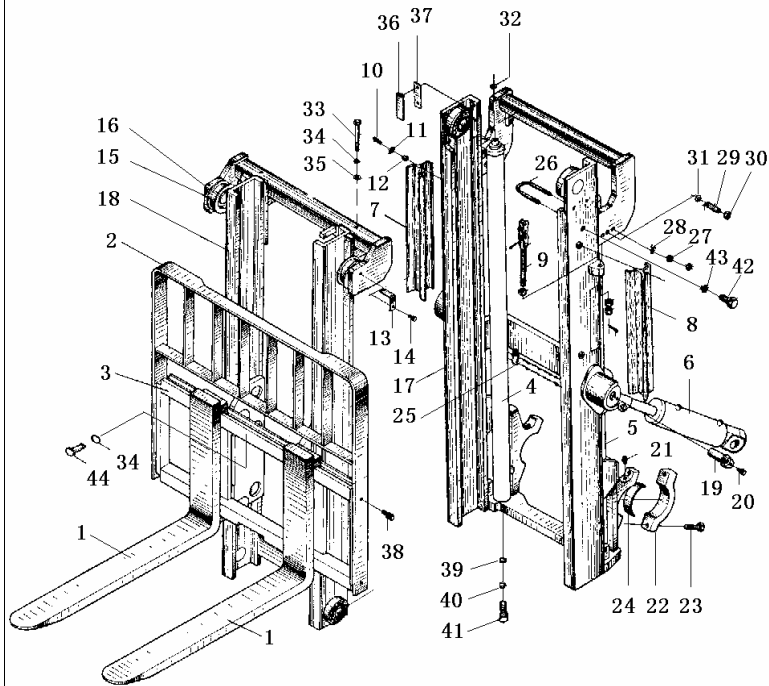
2级门架(R型) SIMPLEX (R-TYPE)
1-1.8t



序号 Item No.	代号 Part No.	名称 Description	数量 Q'ty	备注或适用车型 Remarks or Series No	物料码 Code No.
26	N30M300-000016-000	限位螺钉 Screw	2		N30M300-000016-000
27	GB93-87	垫圈 18 Washer 18	2		
28	N15N450-000005-000	U形螺栓 U- Bolt	2		N15N450-000005-000
29	GB6170-86	螺母 M8 Nut M8	8		
30	N30N450-000013-000	厚垫圈 8 Washer 8	4		N30N450-000013-000
31	N30M300-000008-000	螺钉 M20×64 Bolt M20×64	2		N30M300-000008-000
32	GB6170-86	螺母 M20 Nut M20	2		
33	N30M300-000009-000	塞子 Plug	2		N30M300-000009-000
34	GB5783-86	螺栓 M12×25 Bolt M12×25	1		
35	N30M300-006000-000	螺栓 M14×1.5×30 Bolt M14×1.5×30	4		N30M300-006000-000
36	N30M300-000014-000	导轨衬垫 Slide liner	2		N30M300-000014-000
37	N30M300-000015-000	调整垫片 Adjusting shim	2		N30M300-000015-000

图2 起升组件
Fig.2 Lifting part

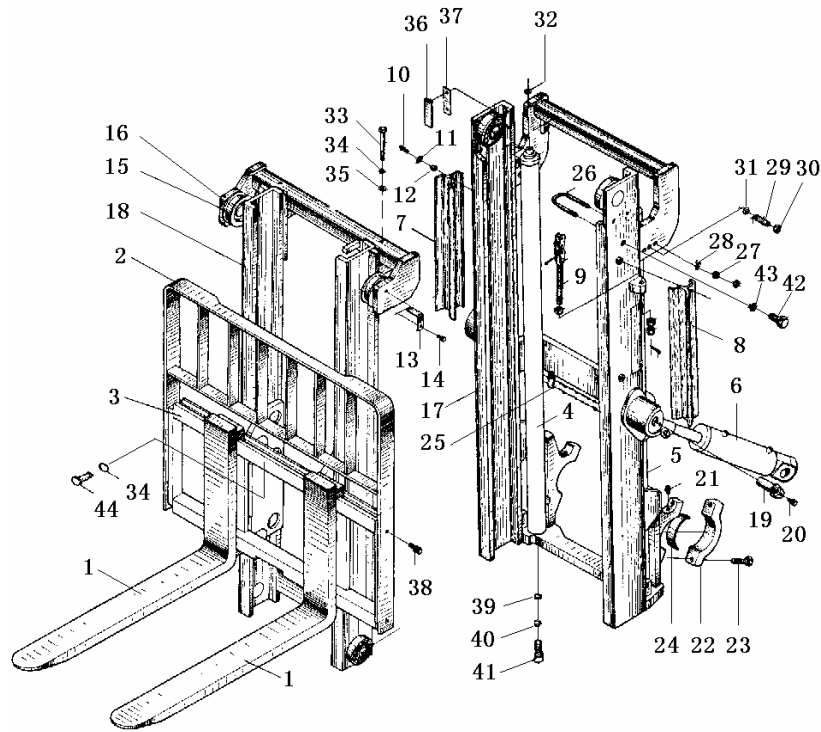
2级门架(N型) SIMPLEX(N-TYPE)
1-1.8t



序号 Item No.	代号 Part No.	名称 Description	数量 Q'ty	备注或适用车型 Remarks or Series No	物料码 Code No.
1	N15M300-010000-W00	货叉总成 Fork assembly	2	1-1.5t	N15M300-01000 0-W00
	N18M300-010000-000	货叉总成 Fork assembly	2	1.8t	N18M300-01000 0-000
2	N15M300-020000-002	挡货架 Load bracket	1		N15M300-02000 0-002
3	N15M300-300000-001	货叉架总成 Fork shelf assembly	1	Fig.7 1-1.5t	N15M300-30000 0-001
	N18M300-300000-000	货叉架总成 Fork shelf assembly	1	Fig.7 1.8t	N18M300-30000 0-000
4	N15M300-400000-000	右升降油缸 Lift cylinder,left	1	Fig.8	N15M300-40000 0-000
5	N15M300-500000-000	左升降油缸 Lift cylinder,right	1	Fig.8	N15M300-50000 0-000
6	N15M300-600000-002	倾斜油缸 Tilt cylinder	2	Fig.9	N15M300-60000 0-002
7	N30M300-000001-000	右护条罩 Chain protector,right	1		N30M300-00000 1-000
8	N30M300-000002-000	左护条罩 Chain protector,left	1		N30M300-00000 2-000
9	N15M300-030000-000	链条总成 Chain	2	Fig.4 1-1.5t	N15M300-03000 0-000
	N18M300-030000-000	链条总成 Chain	2	Fig.4 1.8t	N18M300-03000 0-000
10	GB5787-86	螺栓 M8×20 Bolt M8×20	4	≥3.6m 时 数量 6	
11	N30M300-000003-000	大垫圈 Washer	4	≥3.6m 时 数量6	N30M300-00000 3-000
12	N30M300-000004-000	套 Sleeve	4	≥3.6m 时 数量 6	N30M300-00000 4-000

图2 起升组件
Fig.2 Lifting part

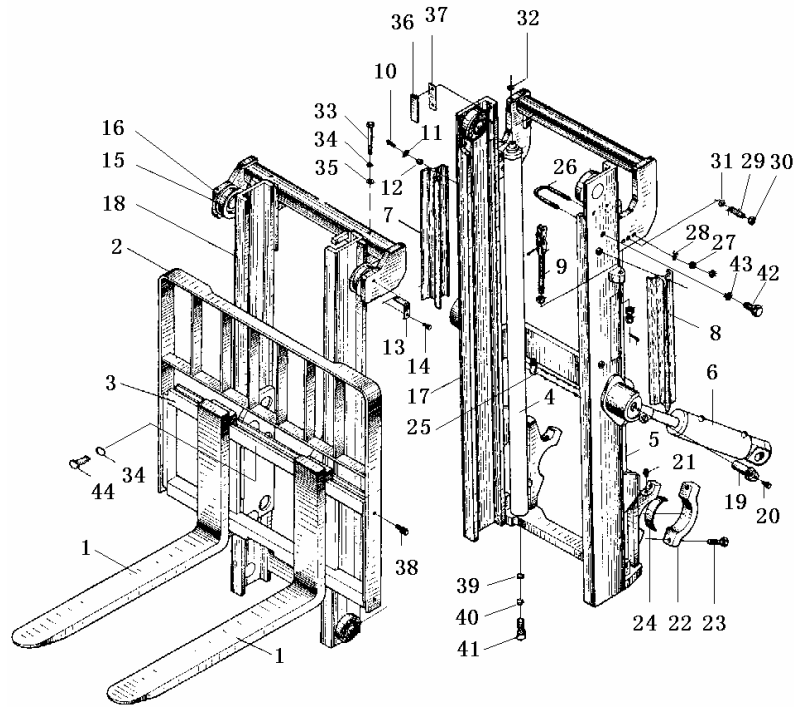
2级门架(N型) SIMPLEX(N-TYPE)
1-1.8t



序号 Item No.	代号 Part No.	名称 Description	数量 Q'ty	备注或适用 车型 Remarks or Series No	物料码 Code No.
13	N15M300-002000-000	链轮护板 Plate	2		N15M300-002000-000
14	N30M300-003000-000	螺栓M8×1.25×16 Bolt M8×1.25×16	2		N30M300-003000-000
15	780708F1-G00	链轮 Chain wheel	2	1-1.5t	780708F1-G00
	780708A-G00	链轮 Chain wheel	2	1.8t	780708A-G00
16	GB894.1-86	挡圈40 Snap ring 40	2		
17	N15M300-100000-000	外门架 Outer mast	1	Fig.6	N15M300-100000-000
18	N15M300-200000-000	内门架 Inner mast	1	Fig.6	N15M300-200000-000
19	N15M300-001000-000	销轴 Pin shaft	4		N15M300-001000-000
20	N30M300-004000-000	螺栓 M10×1.25×20 Bolt M10×1.25×20	4		N30M300-004000-000
21	GB1152-89	油杯 M10×1 Oil cup M10×1	6		
22	N15M300-000005-000	轴承盖 Bearing cap	2		N15M300-000005-000
23	N15M300-005000-000	螺栓 M14×1.5×45 Bolt M14×1.5×45	4		N15M300-005000-000
24	N15M300-000006-000	轴瓦 Bearing liner	2		N15M300-000006-000
25	N15M300-700000-000	油路系统 Oil pipe system	1	Fig.10	N15M300-700000-000
26	N15M300-000007-000	U形螺栓 U- Bolt	2		N15M300-000007-000

图2 起升组件
Fig.2 Lifting part

2级门架(N型) SIMPLEX(N-TYPE)
1-1.8t

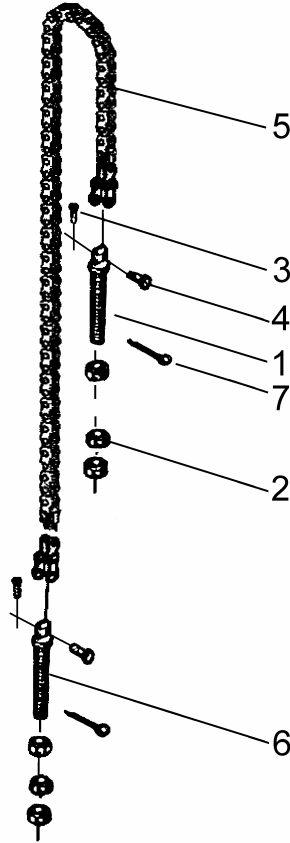


序号 Item No.	代号 Part No.	名称 Description	数量 Q'ty	备注或适用 车型 Remarks or Series No	物料码 Code No.
27	GB6170-86	螺母M8 Nut M8	8		
28	N30N450-000013-000	厚垫圈8 Washer 8	4		N30N450-000013-000
29	N30M300-000008-000	螺钉 M20×64 Screw M20×64	2		N30M300-000008-000
30	GB6170-86	螺母M20 Nut M20	2		
31	N30M300-000009-000	塞子 Plug	2		N30M300-000009-000
32	N15M300-000012-000	油缸调整垫圈 Adjusting gasket	2		N15M300-000012-000
33	N15M300-000013-000	长螺栓 M12×1.25×120 Bolt M12×1.25×120	2		N15M300-000013-000
34	GB93-87	垫圈 12 Washer 12	3		
35	GB97.1-85	垫圈 12 Washer 12	2		
36	N30M300-000014-000	导轨衬垫 Slide liner	2		N30M300-000014-000
37	N30M300-000015-000	调整垫片 Adjusting shim	2		N30M300-000015-000
38	N30M300-006000-000	螺栓 M14×1.5×30 Bolt M14×1.5×30	4		N30M300-006000-000
39	GB97.1-85	垫圈 8 Washer 8	2		
40	GB93-87	垫圈8 Washer 8	2		
41	GB70-85	螺钉 M8×30 Screw M8×30	2		

图 3
Fig.3

链条总成
Chain

2级门架(R型) SIMPLEX(R-TYPE)
1-1.8t



序号 Item No.	代号 Part No.	名称 Description	数量 Q'ty	备注或适用 车型 Remarks or Series No	物料码 Code No.
A	R15M300-030000-000	链条总成 Chain	1	1-1.5t	R15M300-030000-000
B	R18M300-030000-000	链条总成 Chain	1	1.8t	R18M300-030000-000
1	1.5M3H-002001	链条接头(1) Connector(1)	1	1-1.5t	1.5M3H-002001
	R18M300-030001-000	链条接头(1) Connector(1)	1	1.8t	R18M300-030001-000
2	GB6171-86	螺母M16×1.5 Nut M16×1.5	6	1-1.5t	
3	GB91-86	销 3.2×35 Pin3.2×35	2	1.8t	
4	1.5M3H-002002	销轴 Pin shaft	2	1-1.5t	1.5M3H-002002
	N18M300-030003-000	销轴 Pin shaft	2	1.8t	N18M300-030003-000
5	R15M300-030100-W00	LH1223 链条 Chain LH1223	1	See OP.Parts 1-1.5t	R15M300-030100-W00
	R18M300-030100-W00	LH1234 链条 Chain LH1234	1	See OP.Parts 1.8t	R18M300-030100-W00
6	1.5M3H-002003	链条接头(2) Connector(2)	1	1-1.5t	1.5M3H-002003
	R18M300-030002-000	链条接头(2) Connector(2)	1	1.8t	R18M300-030002-000
7	GB91-86	销 3.2×24 Pin3.2×24	2		

附表

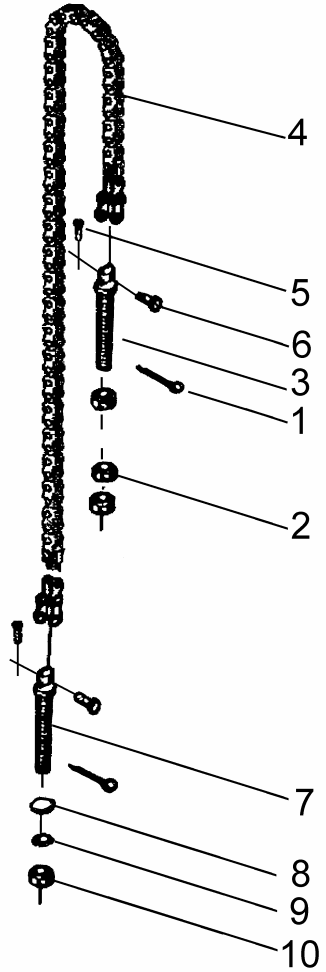
<Optional Parts>

序号 Item No.	A	5(1-1.5t)	B	5(1.8t)
起升高度 Lift Height	代号 Part No.	名称 Description	代号 Part No.	名称 Description
2500	R15M250-030000-000	板式链 LH1223×83	R18M250-030000-000	板式链 LH1234×83
2700	R15M270-030000-000	板式链 LH1223×89	R18M270-030000-000	板式链 LH1234×89
3000	(STD)	(STD)	(STD)	(STD)
3300	R15M330-030000-000	板式链 LH1223×105	R18M330-030000-000	板式链 LH1234×105
3500	R15M350-030000-000	板式链 LH1223×109	R18M350-030000-000	板式链 LH1234×109
3600	R15M360-030000-000	板式链 LH1223×121	R18M360-030000-000	板式链 LH1234×121
4000	R15M400-030000-000	板式链 LH1223×135	R18M400-030000-000	板式链 LH1234×135
4300	R15M430-030000-000	板式链 LH1223×151	R18M430-030000-000	板式链 LH1234×151
4500	R15M450-030000-000	板式链 LH1223×160	R18M450-030000-000	板式链 LH1234×160

图 4
Fig.4

链条总成
Chain

2级门架(N型) SIMPLEX(N-TYPE)
1-1.8t



序号 Item No.	代号 Part No.	名称 Description	数量 Q'ty	备注或适用 车型 Remarks or Series No	物料码 Code No.
A	N15M300-030000-000	链条总成 Chain	1	1-1.5t	N15M300-030000-000
B	N18M300-030000-000	链条总成 Chain	1	1.8t	N18M300-030000-000
1	GB91-86	销4×35 Pin4×35	2		
2	GB6171-86	螺母M16×1.5 Nut M16×1.5	3		
3	N15M300-030001-000	链条接头(1) Connector(1)	1	1-1.5t	N15M300-030001-000
	N18M300-030001-000	链条接头(1) Connector(1)	1	1.8t	N18M300-030001-000
4	N15M300-030100-W00	LH1223 链条 Chain LH1223	1	See OP.Parts 1-1.5t	N15M300-030100-W00
	N18M300-030100-W00	LH1234 链条 Chain LH1234		See OP.Parts 1.8t	N18M300-030100-W00
5	GB91-86	销 3.2×35 Pin3.2×35	2		
6	1.5M3H-002002	销轴 Pin shaft	2	1-1.5t	1.5M3H-002002
	N18M300-030003-000	销轴 Pin shaft	2	1.8t	N18M300-030003-000
7	N15M300-030002-000	链条接头(2) Connector(2)	1	1-1.5t	N15M300-030002-000
	N18M300-030002-000	链条接头(2) Connector(2)	1	1.8t	N18M300-030002-000
8	N15M300-030004-000	垫片 Washer	1		N15M300-030004-000
9	GB93-87	垫圈16 Washer 18	1		

附表

<Optional Parts>

序号 Item No.	A	4(1-1.5t)	B	4(1.8t)
起升高度 Lift Height	代号 Part No.	名称 Description	代号 Part No.	名称 Description
2500	N15M250-030000-000	板式链 LH1223×93	N18M250-030000-000	板式链 LH1234×93
2700	N15M270-030000-000	板式链 LH1223×99	N18M270-030000-000	板式链 LH1234×99
3000	(STD)	(STD)	(STD)	(STD)
3300	N15M330-030000-000	板式链 LH1223×115	N18M330-030000-000	板式链 LH1234×115
3500	N15M350-030000-000	板式链 LH1223×119	N18M350-030000-000	板式链 LH1234×119
3600	N15M360-030000-000	板式链 LH1223×125	N18M360-030000-000	板式链 LH1234×125
4000	N15M400-030000-000	板式链 LH1223×139	N18M400-030000-000	板式链 LH1234×139
4300	N15M430-030000-000	板式链 LH1223×155	N18M430-030000-000	板式链 LH1234×155
4500	N15M450-030000-000	板式链 LH1223×165	N18M450-030000-000	板式链 LH1234×165

附表

<Optional Parts>

序 号 Item No.	1	2
起升高度 Lift Height	代号 Part No.	名称 Description
2500	R15M250-100000-000	R15M250-200000-000
2700	R15M270-100000-000	R15M270-200000-000
3000	(STD)	(STD)
3300	R15M330-100000-000	R15M330-200000-000
3500	R15M350-100000-000	R15M350-200000-000
3600	R15M360-100000-000	R15M360-200000-000
4000	R15M400-100000-000	R15M400-200000-000
4300	R15M430-100000-000	R15M430-200000-000
4500	R15M450-100000-000	R15M450-200000-000

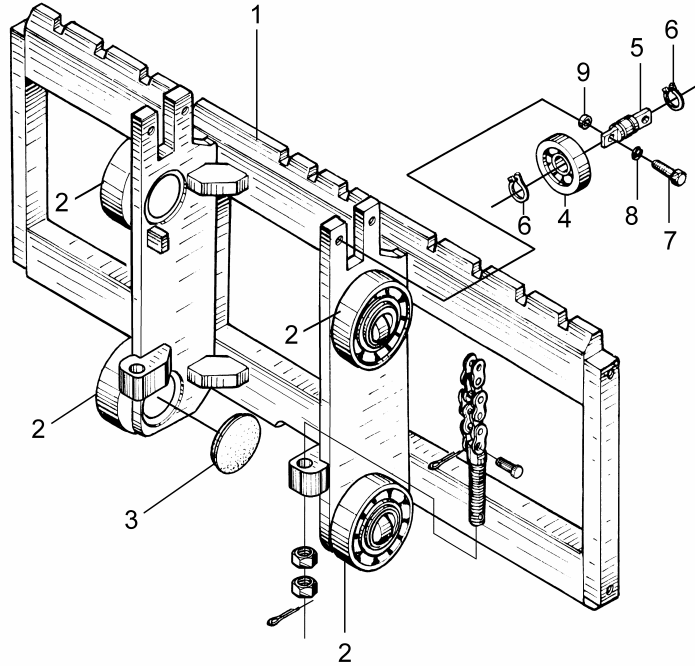
附表

<Optional Parts>

序 号 Item No.	1	2
起升高度 Lift Height	代号 Part No.	名称 Description
2500	N15M250-100000-000	N15M250-200000-000
2700	N15M270-100000-000	N15M270-200000-000
3000	(STD)	(STD)
3300	N15M330-100000-000	N15M330-200000-000
3500	N15M350-100000-000	N15M350-200000-000
3600	N15M360-100000-000	N15M360-200000-000
4000	N15M400-100000-000	N15M400-200000-000
4300	N15M430-100000-000	N15M430-200000-000
4500	N15M450-100000-000	N15M450-200000-000

图7 货叉架总成
Fig. 7 Fork carriage assy'

2级门架 SIMPLEX
1-1.8t

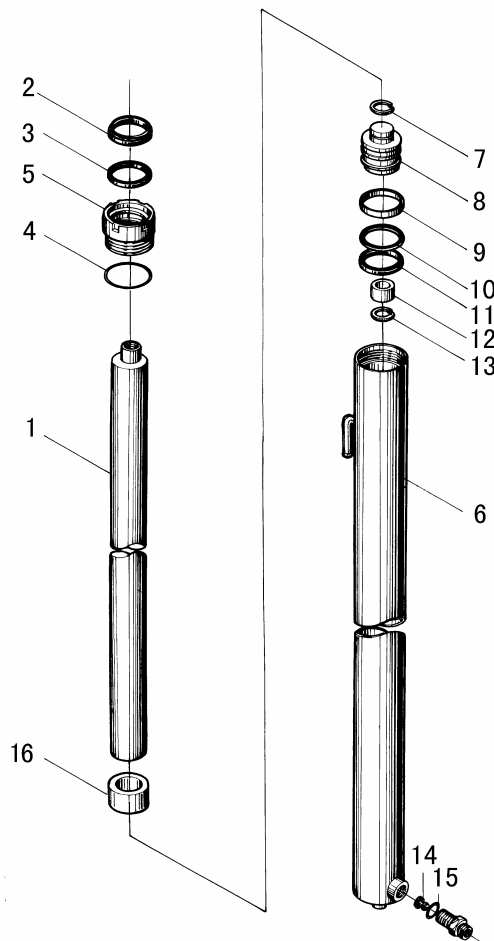


序号 Item No.	代号 Part No.	名称 Description	数量 Q'ty	备注或适用 车型 Remarks or Series No	物料码 Code No.
1	R15M300-301000-000	货叉架体 Fork carriage	1	R-type 1-1.5t	R15M300-301000-000
	R18M300-301000-000	货叉架体 Fork carriage	1	R-type 1.8t	R18M300-301000-000
	N15M300-301000-002	货叉架体 Fork carriage	1	N-type 1-1.5t	N15M300-301000-002
	N18M300-301000-000	货叉架体 Fork carriage	1	N-type 1.8t	N18M300-301000-000
2	760211A-G00	复合滚轮 ϕ 113.2 Roller ϕ 113.2	4		760211A-G00
3	N15M300-300005-G00	橡胶盖 Rubber cover	4		N15M300-300005-G00
4	80605K-G00	侧向滚轮 25×70×17 Side roller 25×70×17	2		80605K-G00
5	1.5M3H-300001	侧滚轮轴 Side roller shaft	2		1.5M3H-300001
6	GB894.1-86	挡圈 25 Snap ring 25	4		
7	GB5782-86	螺栓 M12×40 Bolt M12×40	4		
8	GB93-87	垫圈 12 Washer 12	4		
9	3U3A-100002	调整垫片 Washer	4		3U3A-100002

图 8
Fig. 8

左右升降油缸
Lifting cylinder, Left & Right

2 级门架 SIMPLEX
1-1.8t



序号 Item No.	代号 Part No.	名称 Description	数量 Q'ty	备注或适用 车型 Remarks or Series No	物料码 Code No.
A	N15M300-400000-000	右升降油缸 Lifting cylinder, right	1	See OP.Parts	N15M300-400000-000
B	N15M300-500000-000	左升降油缸 Lifting cylinder, left	1	See OP.Parts	N15M300-500000-000
1	N15M300-400001-W00	活塞杆 Piston rod	1	See OP.Parts	N15M300-400001-W00
2	FD2041A0-G00	DKI防尘圈d35 Dust seal ring d35	1		FD2041A0-G00
3	FU0424K0-G00	ISI密封圈d35 ISI-Seal ring	1		FU0424K0-G00
4	GB3452.1-82	O形密封圈 46.2×2.65 O-ring 46.2×2.65	1		
5	N15M300-402000-W00	导向套 Guide sleeve	1		N15M300-402000-W00
6	N15M300-501000-W00	缸体 Cylinder body	1	See OP.Parts left	N15M300-501000-W00
	N15M300-401000-W00	缸体 Cylinder body	1	See OP.Parts right	N15M300-401000-W00
7	GB895.1-86	挡圈 21 Snap ring 21	1		
8	N15M300-400002-W00	活塞 Piston	1		N15M300-400002-W00
9	N15M300-400003-W00	支承圈 Ring	1		N15M300-400003-W00
10	N15M300-400004-W00	保护圈 Ring	1		N15M300-400004-W00
11	FU0563L0-G00	OSI密封圈D45 OSI-seal ring D45	1		FU0563L0-G00
12	N15M300-400005-W00	阀套 Sleeve	1		N15M300-400005-W00

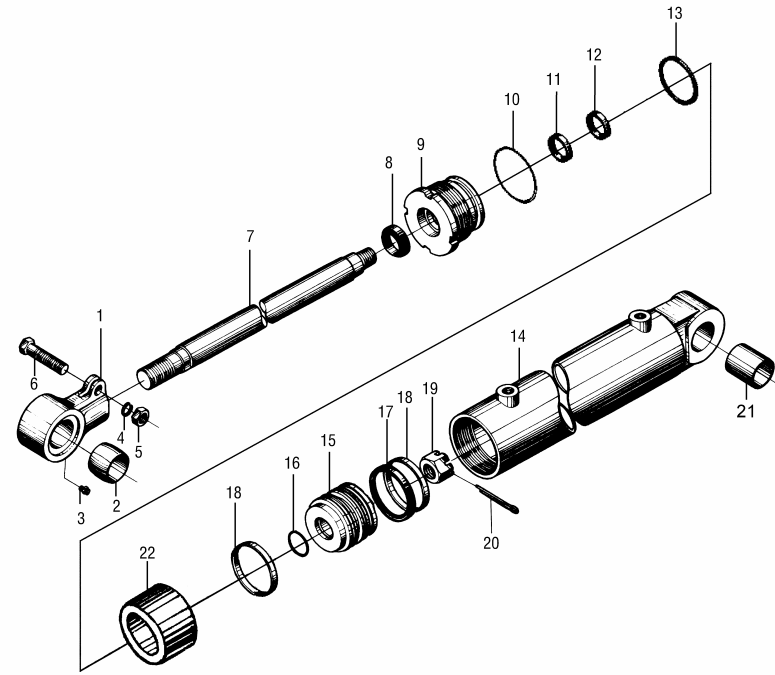
附表

<Optional Parts>

序号 Item No.	A	B	1	6(right)	6(left)	16
起升高度 Lift Height	代号 Part No	代号 Part No	代号 Part No.	代号 Part No.	代号 Part No.	代号 Part No.
2500	N15M250-400000-000	N15M250-500000-000	N15M250-400001-W00	N15M250-401000-W00	N15M250-501000-W00	Without part 16
2700	N15M270-400000-000	N15M270-500000-000	N15M270-400001-W00	N15M270-401000-W00	N15M270-501000-W00	Without part 16
3000	(STD)	(STD)	(STD)	(STD)	(STD)	Without part 16
3300	N15M330-400000-000	N15M330-500000-000	N15M330-400001-W00	N15M330-401000-W00	N15M330-501000-W00	Without part 16
3500	N15M350-400000-000	N15M350-500000-000	N15M350-400001-W00	N15M350-401000-W00	N15M350-501000-W00	Without part 16
3600	N15M360-400000-000	N15M360-500000-000	N15M360-400001-W00	N15M360-401000-W00	N15M360-501000-W00	N15M360-400002-W00
4000	N15M400-400000-000	N15M400-500000-000	N15M400-400001-W00	N15M400-401000-W00	N15M400-501000-W00	N15M400-400002-W00
4300	N15M430-400000-000	N15M430-500000-000	N15M430-400001-W00	N15M430-401000-W00	N15M430-501000-W00	N15M430-400002-W00
4500	N15M450-400000-000	N15M450-500000-000	N15M450-400001-W00	N15M450-501000-W00	N15M450-501000-W00	N15M450-400002-W00

图9 倾斜油缸
Fig. 9 Tilt cylinder

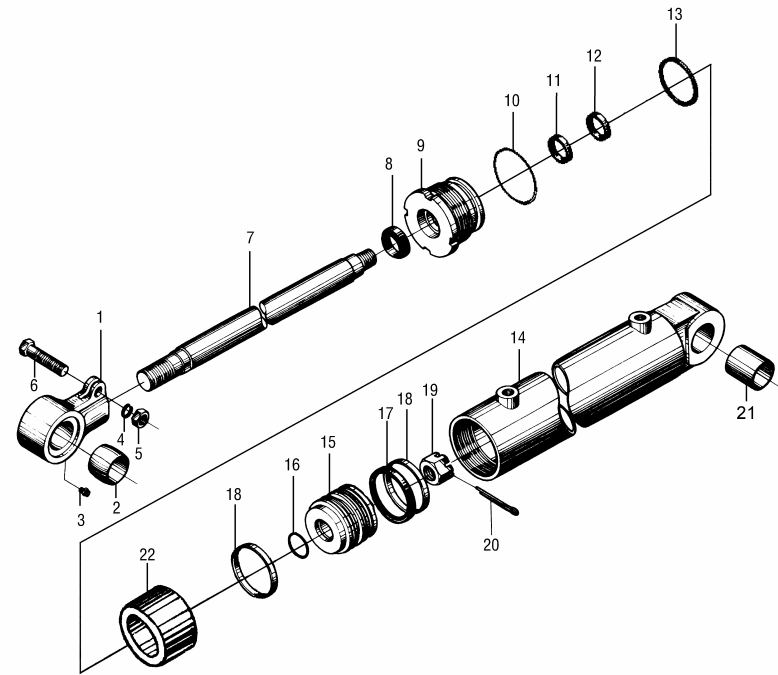
2级门架 SIMPLEX
1-1.8t



序号 Item No.	代号 Part No.	名称 Description	数量 Q'ty	备注或适用 车型 Remarks or Series No	物料码 Code No.
A	N15M300-600000-002	倾斜油缸 Tilt cylinder	1	≤4m	N15M300-600000-002
B	N15M430-600000-002	倾斜油缸 Tilt cylinder	1	≥4.3m	N15M430-600000-002
1	N15M300-600001-000	耳环 Ear ring	1		N15M300-600001-000
2	N15M300-600002-000	球面轴承 Bearing	1		N15M300-600002-000
3	GB1152-89	油杯M6 Oil cup M6	1		
4	GB93-87	垫圈 14 Washer 14	1		
5	GB6171-86	螺母 M14×1.5 Nut M14×1.5	1		
6	GB5785-86	螺栓 M14×1.5×50 Bolt M14×1.5×50	1		
7	N15M300-600003-000	活塞杆 Piston rod	1	≤4m	N15M300-600003-000
	N15M430-600001-000	活塞杆 Piston rod	1	≥4.3m	N15M430-600001-000
8	d25-G00	防尘圈 d25×33× 4.5 Dustproof ring	1		d25-G00
9	N15M300-602000-000	导向套 Guide sleeve	1		N15M300-602000-000
10	GB1235-76	O形密封圈 70×3.1 O-ring 70×3.1	1		
11	RU3000250-Z20-G00	U形密封圈 d25 U-ring d25	1		RU3000250-Z20-G00
12	RS1300250-T46NA-G00	斯特封d25 Seal d25	1		RS1300250-T46NA-G00

图9 倾斜油缸
Fig. 9 Tilt cylinder

2级门架 SIMPLEX
1-1.8t

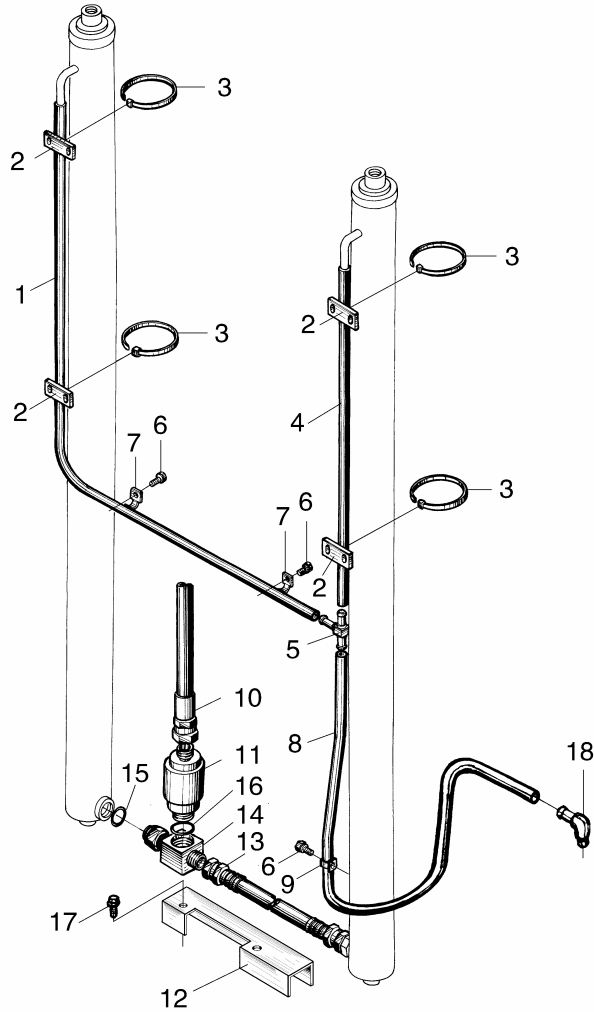


序号 Item No.	代号 Part No.	名称 Description	数量 Q'ty	备注或适用 车型 Remarks or Series No	物料码 Code No.
13	GB1235-76	O形密封圈 65×5.7 O-ring 65×5.7	1		
14	N15M300-601000-000	缸体 Cylinder body	1		N15M300-601000-000
15	N15M300-600007-000	活塞 Piston	1		N15M300-600007-000
16	GB1235-76	O形密封圈30×3.1 O-ring 30×3.1	1		
17	PT0200650-T46NA-G00	格莱圈D65 Seal D65	1		PT0200650-T46NA-G00
18	N15M300-600010-000	支撑环65×60×6.1 Ring65×60×6.1	2		N15M300-600010-000
19	GB9459-88	螺母 M20×1.5 Nut M20×1.5	1		
20	GB91-86	销 4×40 Pin 4×40	1		
21	SF-1-3045-G00	复合衬套 3045 Combination bush	1		SF-1-3045-G00
22	N15M430-600002-000	隔套 Bush	1	≥4.3m	N15M430-600002-000

图 10
Fig. 10

油路系统
Oil pipe system

2 级门架 SIMPLEX
1-1.8t



序号 Item No.	代号 Part No.	名称 Description	数量 Q'ty	备注或适用 车型 Remarks or Series No	物料码 Code No.
1	N15M300-700001-000	回油管 $\phi 14.5/\phi 9.5$ Return oil pipe	1	N-type	N15M300-700001-000
	R15M300-700001-000	回油管 $\phi 14.5/\phi 9.5$ Return oil pipe	1	R-type	R15M300-700001-000
2	N30M300-700002-000	镶边 Band	4		N30M300-700002-000
3	GT-3001-G00	通用尼龙扎带 Clamp-band	4		GT-3001-G00
4	N15M300-700004-000	回油管 $\phi 14.5/\phi 9.5$ Return oil pipe	1		N15M300-700004-000
5	N30M300-700005-000	三通接头 Connector	1		N30M300-700005-000
6	N30M300-003000-000	螺栓 $M8 \times 1.25 \times 16$ Bolt $M8 \times 1.25 \times 16$	3		N30M300-003000-000
7	S16M300-700003-000	管夹 Clip	2		S16M300-700003-000
8	N15M300-700007-000	回油管 $\phi 14.5/\phi 9.5$ Return oil pipe	1		N15M300-700007-000
9	N30M300-700008-000	管夹 Clip	1		N30M300-700008-000
10	N15M300-701000-000	油管总成 Oil pipe assy	1		N15M300-701000-000
11	N15M300-702000-000	限速阀 Speed limiting valve	1		N15M300-702000-000
12	N15M300-700009-000	油管护罩 Cover oil pipe	1		N15M300-700009-000
13	N15M300-703000-000	油管 Oil pipe	1	N-type	N15M300-703000-000
	R15M300-703000-000	油管 Oil pipe	1	R-type	R15M300-703000-000

附表

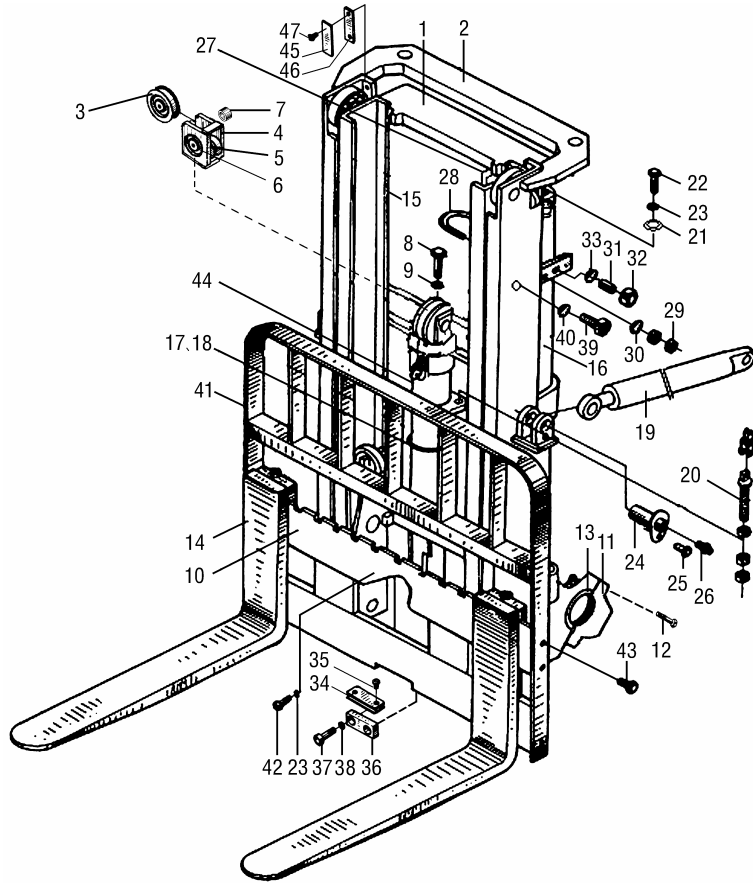
<Optional Parts>

序号 Item No.	1(N)	1(R)	4
起升高度 Lift Height	代号 Part No.	代号 Part No.	代号 Part No.
2500	N15M250-700001-000	R15M250-700001-000	N15M250-700004-000
2700	N15M270-700001-000	R15M270-700001-000	N15M270-700004-000
3000	(STD)	(STD)	(STD)
3300	N15M330-700001-000	R15M330-700001-000	N15M330-700004-000
3500	N15M350-700001-000	R15M350-700001-000	N15M350-700004-000
3600	N15M360-700001-000	R15M360-700001-000	N15M360-700004-000
4000	N15M400-700001-000	R15M400-700001-000	N15M400-700004-000
4300	N15M430-700001-000	R15M430-700001-000	N15M430-700004-000
4500	N15M450-700001-000	R15M450-700001-000	N15M450-700004-000

图 11
Fig.11

起升组件
Lifting part

2级全自由门架 Duplex
1-1.8t

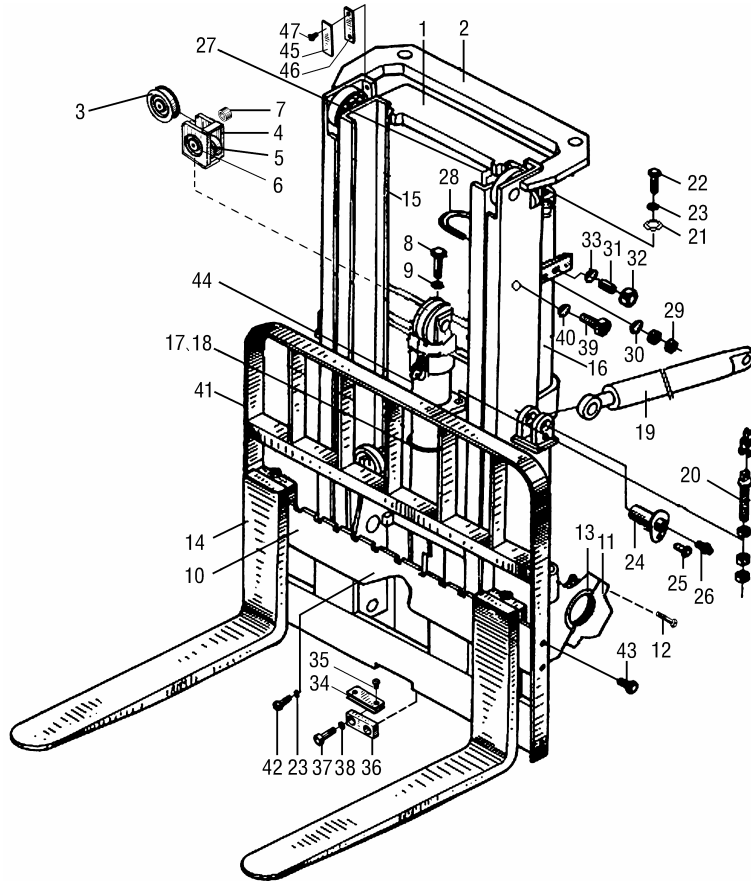


序号 Item No.	代号 Part No.	名称 Description	数量 Q'ty	备注或适用 车型 Remarks or Series No	物料码 Code No.
1	N15U300-100000-000	外门架 Outer mast	1	Fig.13	N15U300-100000-000
2	N15U300-200000-000	内门架 Inner mast	1	Fig.13	N15U300-200000-000
3	780310K-G00	链轮 Chain wheel	1	1-1.5t	780310K-G00
	CW310-G00	链轮 Chain wheel	1	1.8t	CW310-G00
4	1.5U3H-001000	链轮座 Chain seat	1		1.5U3H-001000
5	1.5N4.5H-000004	链轮轴 Chain wheel shaft	1		1.5N4.5H-000004
6	GB894.1-86	挡圈50 Snap ring 50	2		
7	1.5DC3-000004	隔套 Septa	2		1.5DC3-000004
8	GB70-85	螺钉M16×45 Screw M16×45	1		
9	GB93-87	垫圈16 Washer16	1		
10	N15U300-300000-000	货叉架总成 Fork shelf assembly	1	Fig.14	N15U300-300000-000
	N18U300-300000-000	货叉架总成 Fork shelf assembly	1	Fig.14	N18U300-300000-000
11	N15M300-000005-000	轴承盖 Bearing cap	2		N15M300-000005-000
12	N15M300-005000-000	螺栓M14×1.5×45 Blot M14×1.5×45	4		N15M300-005000-000
13	N15M300-000006-000	轴瓦 Bearing liner	2		N15M300-000006-000

图 11
Fig.11

起升组件
Lifting part

2 级全自由门架 Duplex
1-1.8t

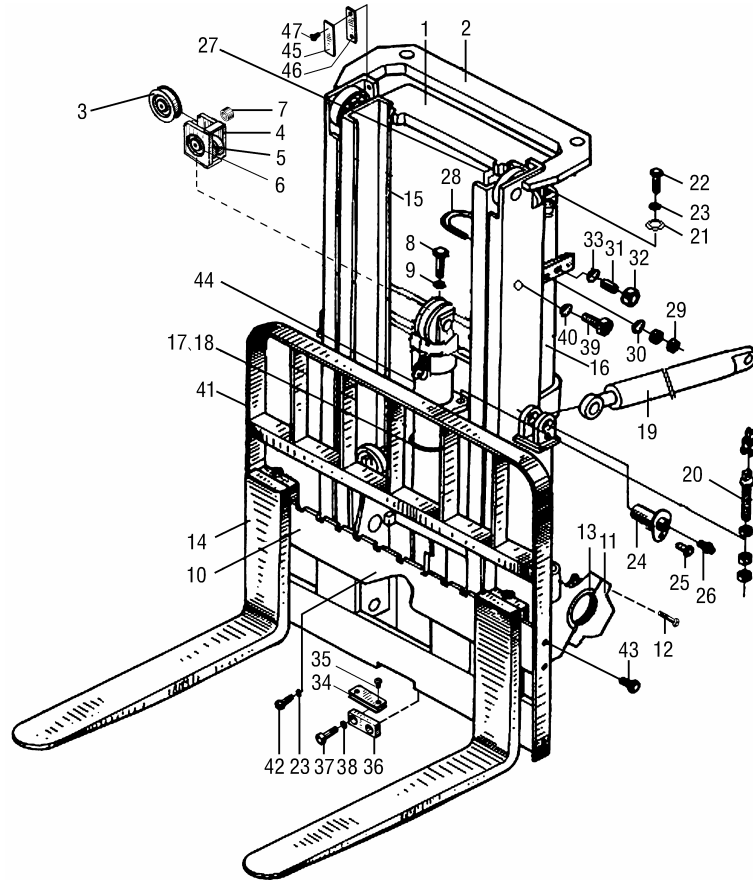


序号 Item No.	代号 Part No.	名称 Description	数量 Q'ty	备注或适用 车型 Remarks or Series No	物料码 Code No.
14	N15M300-010000-W00	货叉总成 Fork assembly	2	1-1.5t	N15M300-010000-W00
	N18M300-010000-000	货叉总成 Fork assembly	2	1.8t	N18M300-010000-000
15	1.5U3H-400000	左升降油缸 Left lift cylinder	1	Fig.15	1.5U3H-400000
	N15U300-400000-001	左升降油缸 Left lift cylinder	1	Fig.16	N15U300-400000-001
16	1.5U3H-500000	右升降油缸 Right lift cylinder	1	Fig.15	1.5U3H-500000
	N15U300-500000-001	右升降油缸 Right lift cylinder	1	Fig.16	N15U300-500000-001
17	1.5U3H-000001	短缸固定螺栓 Bolt	1		1.5U3H-000001
	1.5U3H-000001-001	短缸固定螺栓 Bolt			1.5U3H-000001-001
18	GB6170-86	螺母M10 Nut M10	2		
19	N15M300-600000-002	倾斜油缸 Tilt cylinder	2	Fig.9	N15M300-600000-002
20	1.5U3H-002000	链条总成 Chain	1	Fig.12 1-1.5t	1.5U3H-002000
	N18U300-040000-000	链条总成 Chain	1	Fig.12 1.8t	N18U300-040000-000
21	1.5DC3-000001	调整垫圈 Adjusting shim	2		1.5DC3-000001
22	GB5782-86	螺栓 M12×60 Bolt M12×60	2		

图 11
Fig.11

起升组件
Lifting part

2级全自由门架 Duplex
1-1.8t

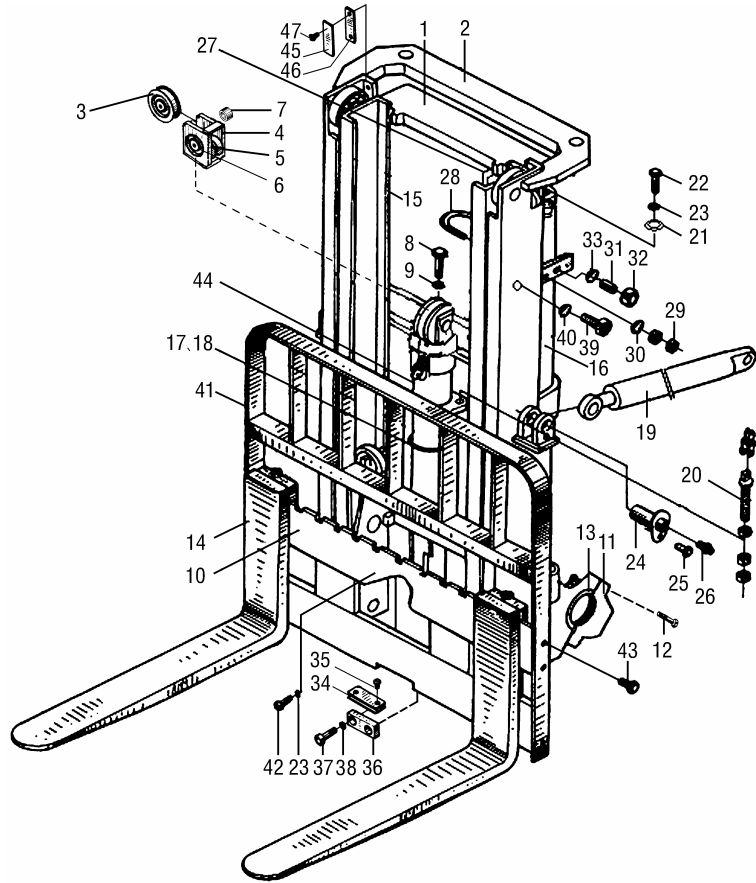


序号 Item No.	代号 Part No.	名称 Description	数量 Q'ty	备注或适用 车型 Remarks or Series No	物料码 Code No.
23	GB93-87	垫圈 12 Washer 12	3		
24	N15M300-001000-000	销轴 Pin shaft	4		N15M300-001000-000
25	N30M300-004000-000	螺栓 M10×1.25×20 Blot M10×1.25×20	4		N30M300-004000-000
26	GB1152-89	油杯 M10×1 Oil cup M10×1	4		
27	N15U300-700000-000	油路系统 Oil pipe system	1	Fig.17 -2007.8	N15U300-700000-000
	N15U300-700000-001	油路系统 Oil pipe system	1	Fig.18 -2010.02	N15U300-700000-001
	N15U300-700000-002	油路系统 Oil pipe system	1	Fig.19 2010.03-	N15U300-700000-002
28	N15U300-000005-000	U形螺栓 U-Bolt	2		N15U300-000005-000
29	GB6171-86	螺母 M8 Nut M8	8		
30	N30N450-000013-000	厚垫圈 8 Washer 8	4		N30N450-000013-000
31	N30N450-000005-000	螺钉 M20×53 Screw M20×53	2		N30N450-000005-000
32	GB6170-86	螺母 M20 Nut M20	2		
33	N30M300-000009-000	塞子 Plug	2		N30M300-000009-000
34	1.5U3H-000003	小缓冲垫 Buffer pad	2		1.5U3H-000003
35	GB819-85	螺钉 M6×10 Screw M6×10	4		

图 11
Fig.11

起升组件
Lifting part

2级全自由门架 Duplex
1-1.8t

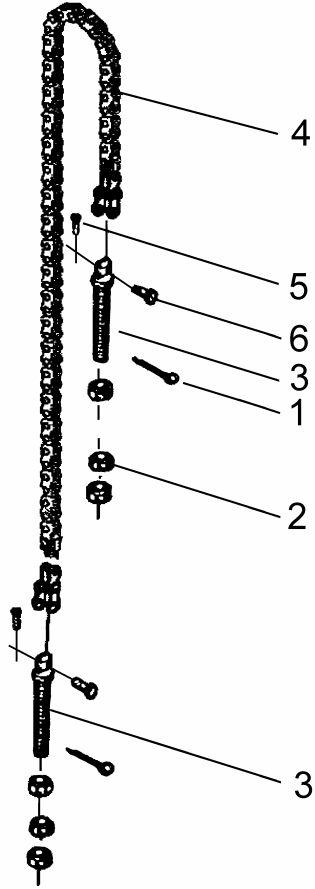


序号 Item No.	代号 Part No.	名称 Description	数量 Q'ty	备注或适用 车型 Remarks or Series No	物料码 Code No.
36	1.5U3H-000004	挡板 Plate	2		1.5U3H-000004
37	GB70-85	螺钉 M10×30 Screw M10×30	4		
38	GB93-87	垫圈 10 Washer 10	6		
39	N30M300-000016-000	限位螺钉 Screw	1		N30M300-000016-000
40	GB93-87	垫圈 18 Washer 18	2		
41	N15M300-020000-002	挡货架 Load-backrest	1		N15M300-020000-002
42	GB5783-86	螺栓 M12×25 Bolt M12×25	1		
43	N30M300-006000-000	螺栓 M14×1.5×30 Blot M14×1.5×30	4		N30M300-006000-000
44	1.5U3H-700000A	前升降油缸 Front lift cylinder	1	Fig.16	1.5U3H-700000A
	N15N450-800000-001	前升降油缸 Front lift cylinder	1	Fig.16	N15N450-800000-001
45	N30M300-000014-000	导轨衬垫 Slide liner	2	2007.12-	N30M300-000014-000
	2025M3-100001	导向板 Plate	2	-2007-11	2025M3-100001
46	N30M300-000015-000	调整垫片 Adjusting shim	2	2007.12-	N30M300-000015-000
	2025TT-100008	调整垫 Adjusting shim	2	-2007-11	2025TT-100008
47	GB68-85	螺钉 M8×16 Screw M8×16	4	-2007-11	

图 12
Fig.12

链条总成
Chain

2 级全自由门架 Duplex
1-1.8t



序号 Item No.	代号 Part No.	名称 Description	数量 Q'ty	备注或适用 车型 Remarks or Series No	物料码 Code No.
A	1.5U3H-002000	链条总成 Chain	1	See OP.Parts 1-1.5t	1.5U3H-002000
B	N18U300-040000-000	链条总成 Chain	1	See OP.Parts 1.8t	N18U300-040000-000
1	GB91-86	销2.5×8 Pin2.5×8	2	1.5t	
	GB91-86	销3.2×28 Pin3.2×28	2	1.8t	
2	GB6171-86	螺母M20×1.5 Nut M20×1.5	6		
3	3M3C-002001A	链条接头 Connector	2	1.5t	3M3C-002001A
	3.5M3H-002001	链条接头 Connector	2	1.8t	3.5M3H-002001
4	GB/T6074-1995	板式链LH1623×55 Chain LH1623×55	1	See OP.Parts 1-1.5t	GB/T6074-1995
	N18U300-040100-W00	LH1634链条 Chain LH1634		See OP.Parts 1.8t	N18U300-040100-W00
5	GB91-86	销3×20 Pin3×20	2	1-1.5t	
	GB91-86	销3.2×20 Pin3.2×20	2	1.8t	
6	2030TT-104002	销轴 Pin shaft	2	1-1.5t	2030TT-104002
	3.5M3H-002002	销轴 Pin shaft	2	1.8t	3.5M3H-002002

附表

<Optional Parts>

序号 Item No.	A	4	B	4
起升高度 Lift Height	代号 Part No.	名称 Description	代号 Part No.	名称 Description
2500	1.5U2.5H-001000	板式链 LH1623×51	N18U250-040000-000	板式链 LH1634×51
2700	1.5U2.7H-001000	板式链 LH1623×53	N18U270-040000-000	板式链 LH1634×53
3000	(STD)	(STD)	(STD)	(STD)
3300	1.5U3.3H-001000	板式链 LH1623×59	N18U330-040000-000	板式链 LH1634×59
3600	1.5U3.6H-001000	板式链 LH1623×63	N18U360-040000-000	板式链 LH1634×63
4000	1.5U4H-001000	板式链 LH1623×67	N18U400-040000-000	板式链 LH1634×67

附表

<Optional Parts>

序号 Item No.	1	2
起升高度 Lift Height	代号 Part No.	代号 Part No.
2500	N15U250-100000-000	N15U250-200000-000
2700	N15U270-100000-000	N15U270-200000-000
3000	(STD)	(STD)
3300	N15U330-100000-000	N15U330-200000-000
3600	N15U360-100000-000	N15U360-200000-000
4000	N15U400-100000-000	N15U400-200000-000

图 14 货叉架总成
Fig. 14 Fork carriage assy'

2 级全自由门架 Duplex
1-1.8t

序号 Item No.	代号 Part No.	名称 Description	数量 Q'ty	备注或适用 车型 Remarks or Series No	物料码 Code No.
1	N15U300-301000-000	货叉架体 Fork carriage	1	1-1.5t	N15U300-301000-000
	N18U300-301000-000	货叉架体 Fork carriage	1	1.8t	N18U300-301000-000
2	760211A-G00	复合滚轮 Φ 113.2 Roller Φ 113.2	4		760211A-G00
3	N15M300-300005-G00	橡胶盖 Rubber cover	4		N15M300-300005-G00
4	80605K-G00	侧向滚轮 $25 \times 70 \times 17$ Side roller $25 \times 70 \times 17$	2		80605K-G00
5	1.5M3H-300001	侧滚轮轴 Side roller shaft	2		1.5M3H-300001
6	GB894.1-86	挡圈 25 Snap ring 25	4		
7	GB5782-86	螺栓 M12 \times 40 Bolt M12 \times 40	4		
8	GB93-87	垫圈 12 Washer 12	4		
9	3U3A-100002	调整垫片 Washer	4		3U3A-100002

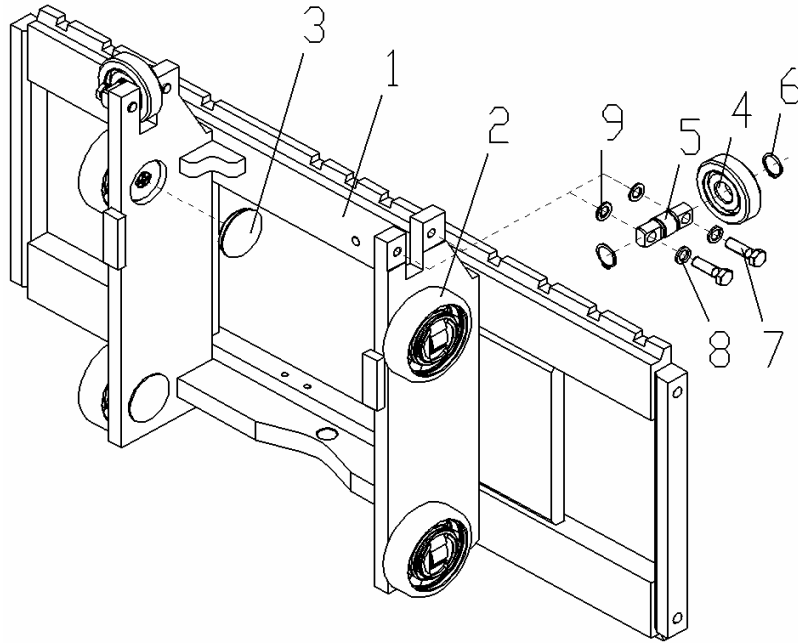
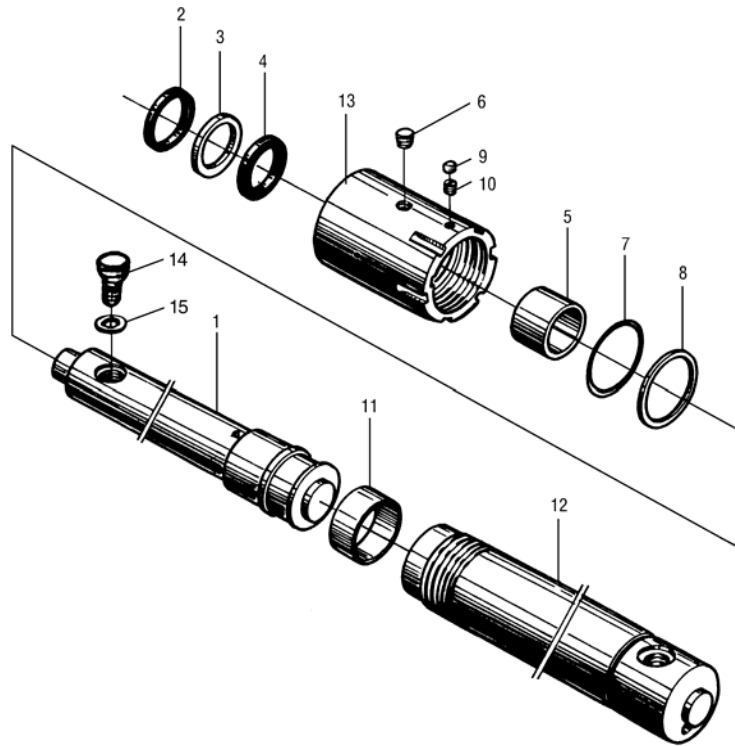


图 15 左右升降油缸
Fig. 15 Lifting cylinder, Left & Right

2 级全自由门架 Duplex
1-1.8t -2010.02



序号 Item No.	代号 Part No.	名称 Description	数量 Q'ty	备注或适用 车型 Remarks or Series No	物料码 Code No.
A	1.5U3H-400000	左升降油缸 Lifting cylinder, left	1	See OP.Parts	
B	1.5U3H-500000	右升降油缸 Lifting cylinder, right	1	See OP.Parts	1.5U3H-500000
1	1.5U3H-401000	左柱塞杆总成 Left Piston rod	1	See OP.Parts	1.5U3H-401000
	1.5U3H-501000	右柱塞杆总成 Right Piston rod	1	See OP.Parts	1.5U3H-501000
2	CL0363C0-G00	LBH 防尘圈 d32 Dust seal ring d32	1		CL0363C0-G00
3	1.5U3H-400001	挡片 Snap ring	1		1.5U3H-400001
4	D2-32-G00	Yx 型密封圈 d32 Seal ring d32	1		D2-32-G00
5	SF-1-3230-G00	复合衬套 3230 Bush 3230	1		SF-1-3230-G00
6	Q/ZB223.1	螺塞 Z1/8" Plug	2		Q/ZB223.1
7	GB1235-76	O 形密封圈 56×3.5 O-ring 56×3.5	1		
8	1.5U3H-400002	挡圈 Snap ring	1		1.5U3H-400002
9	GB80-85	螺钉 M6×8 Screw M6×8	2		
10	2.5U3H-400003	塞子 Plug	2		2.5U3H-400003
11	1.5U3H-400003	支承环 Support ring	1		1.5U3H-400003
12	1.5U3H-402000	缸体 (左) Cylinder body(left)	1	See OP.Parts	1.5U3H-402000

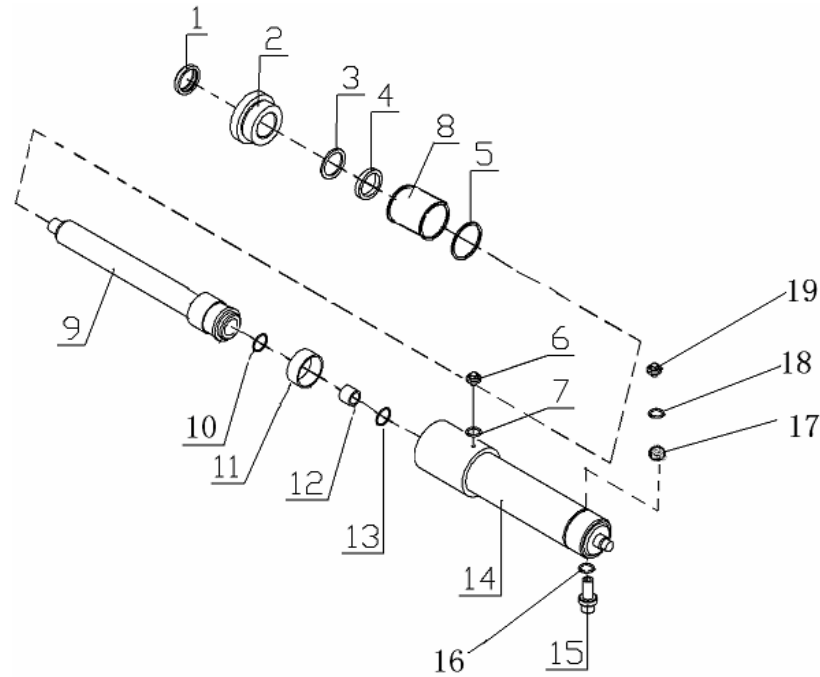
附表

<Optional Parts>

序号 Item No.	A	B	1(left)	1(right)	12(left)	12(right)
起升高度 Lift Height	代号 Part No	代号 Part No	代号 Part No.	代号 Part No.	代号 Part No.	代号 Part No.
2500	1.5U2.5H-300000	1.5U2.5H-400000	1.5U2.5H-301000	1.5U2.5-401000	1.5U2.5H-302000	1.5U2.5H-402000
2700	1.5U2.7H-300000	1.5U2.7H-400000	1.5U2.7H-301000	1.5U2.7H-401000	1.5U2.7H-302000	1.5U2.7H-402000
3000	(STD)	(STD)	(STD)	(STD)	(STD)	(STD)
3300	1.5U3.3H-300000	1.5U3.3H-400000	1.5U3.3H-301000	1.5U3.6H-401000	1.5U3.3H-302000	1.5U3.3H-402000
3600	1.5U3.6H-300000	1.5U3.6H-400000	1.5U3.6H-301000	1.5U3.6H-401000	1.5U3.6H-302000	1.5U3.6H-402000
4000	1.5U4H-300000	1.5U4H-400000	1.5U4H-301000	1.5U4H-401000	1.5U4H-302000	1.5U4H-402000

图 16 左右升降油缸
Fig. 16 Lifting cylinder, Left & Right

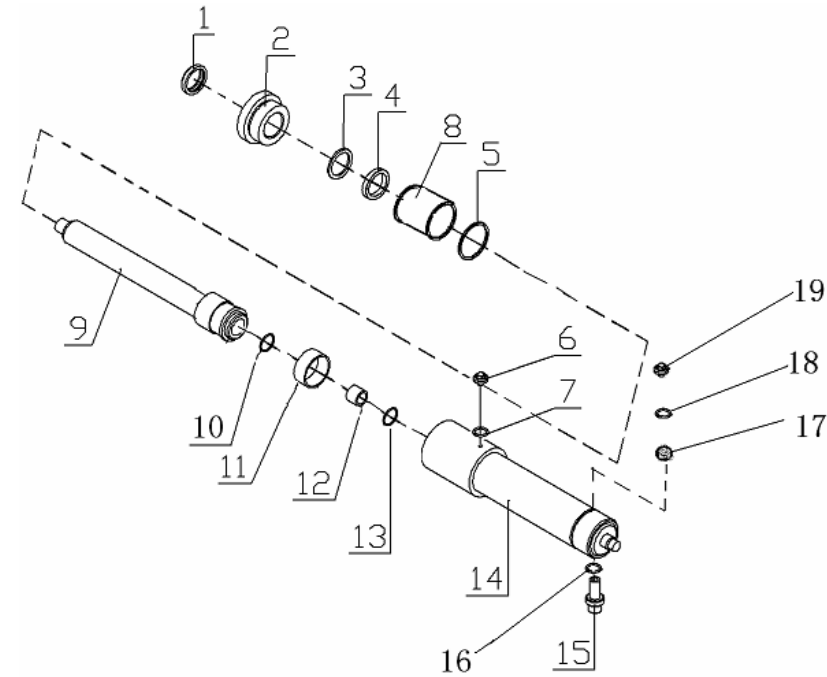
2 级全自由门架 Duplex
1-1.8t 2010.03—



序号 Item No.	代号 Part No.	名称 Description	数量 Q't y	备注或适用 车型 Remarks or Series No	物料码 Code No.
A	N15U300-400000-000	右升降油缸 Lift cylinder, right	1	See OP.Parts 2010.02—	N15U300-400000-000
B	N15U300-500000-000	左升降油缸 Lift cylinder, left	1	See OP.Parts 2010.02—	N15U300-500000-000
1	CL0363C0-G00	LBH 防尘圈 d32 Dust seal ring d32	1		CL0363C0-G00
2	X15U300-400001-W00	缸盖 Cylinder cover	1		X15U300-400001-W00
3	X15U300-400004-W00	挡片 Snap ring	1		X15U300-400004-W00
4	FU2055F0-G00	ISI 密封圈 d32 ISI-seal ring d32	1		FU2055F0-G00
5	GB1235-76	O 形密封圈 50×3.1 O-ring 50×3.1	1		
6	2.5CDJ-32-00-07	放气螺塞 Plug	1		2.5CDJ-32-00-07
7	GB1235-76	O 形密封圈 16×2.4 O-ring 16×2.4	1		
8	SF-1-3230-G00	复合衬套 3230 Sleeve	1		SF-1-3230-G00
9	N15U300-402000-W01	右柱塞杆总成 Pole stopper rod assembly .right	1	See OP.Parts	N15U300-402000-W01
	N15U300-502000-W01	左柱塞杆 Pole stopper rod Assembly,left	1	See OP.Parts	N15U300-502000-W01
10	GB895.1-86	挡圈 30 Snap shim30	1		
11	1.5U3H-400003	支承环 Support ring	1		1.5U3H-400003
12	N15M300-400005-W00	阀套 Sleeve	1		N15M300-400005-W00

图 16 左右升降油缸
Fig. 16 Lifting cylinder, Left & Right

2 级全自由门架 Duplex
1-1.8t 2010.03—



序号 Item No.	代号 Part No.	名称 Description	数量 Q't y	备注或适用 车型 Remarks or Series No	物料码 Code No.
13	GB895.1-86	挡圈 24 Snap shim 24	1		GB895.1-86
14	N15U300-501000-W01	左升降油缸体 left	1	See OP.Parts	N15U300-501000-W01
	N15U300-401000-W01	右升降油缸体 Right	1	See OP.Parts	N15U300-401000-W01
15	X15U300-403000-W00	安全阀组件 The module of safety valve	1	右升降油缸 right	X15U300-403000-W00
		无此零件 Without part		左升降油缸 left	
16	GB1235-76	O 形密封圈 20× 2.4 O-ring 20×2.4	1	右升降油缸 right	
		无此零件 Without part		左升降油缸 left	
17	RC30U300-400008-W00	钢球 S φ 5 ball	1		RC30U300-400008-W00
18	JB982-77	垫圈 8 Washer 8	1		JB982-77
19	RC30U300-400007-W00	堵塞 plug	1		RC30U300-400007-W00
	X15U300-400000-000-KIT	左右缸修理包 Lift cylinder- KIT	2	1、4、5、7、 16, For (1-1.5t)	
	X15U300-500000-000-KIT				

选配

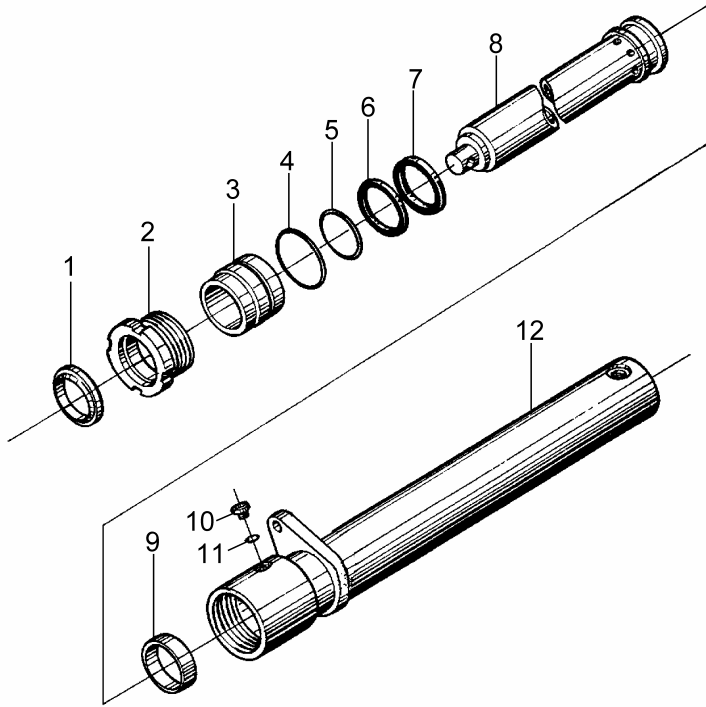
<Optional Parts>

序号 Item No.	A	B	1 (right)	1(left)	9(right)	9 (left)
起升高度 Lift Height	代号 Part No	代号 Part No	代号 Part No.	代号 Part No.	代号 Part No.	代号 Part No.
2500	N15U200-400000-000	N15U200-500000-000	N15U200-402000-W00	N15U250-502000-W00	N15U250-401000-W00	N15U250-501000-W00
2700	N15U250-400000-000	N15U250-500000-000	N15U250-402000-W00	N15U270-502000-W00	N15U270-401000-W00	N15U270-501000-W00
3000	(STD)	(STD)	(STD)	(STD)	(STD)	(STD)
3300	N15U330-400000-000	N15U330-500000-000	N15U330-402000-W00	N15U330-502000-W00	N15U330-401000-W00	N15U330-501000-W00
3600	N15U360-400000-000	N15U360-500000-000	N15U360-402000-W00	N15U360-502000-W00	N15U360-401000-W00	N15U360-501000-W00
4000	N15U400-400000-000	N15U400-500000-000	N15U400-402000-W00	N15U400-502000-W00	N15U400-401000-W00	N15U400-501000-W00

图 17
Fig. 17

前升降油缸
Front lift cylinder

2 级全自由门架 Duplex
1-1.8t



序号 Item No.	代号 Part No.	名称 Description	数量 Q'ty	备注或适用 车型 Remarks or Series No	物料码 Code No.
A	1.5U3H-700000A	前升降油缸 Lift cylinder, front	1	See OP.Parts	1.5U3H-700000A
1	CL0121C0-G00	LBH防尘圈d70 LBH-dustproof ring d70	1		CL0121C0-G00
2	1.5U3H-700002B	缸盖 Cap	1		1.5U3H-700002B
3	1.5U3H-700003	导套 Guide bush	1		1.5U3H-700003
4	GB1235-76	O形密封圈95×3.1 O-ring	1		
5	GB1235-76	O形密封圈75×3.1 O-ring	1		
6	1.5U3H-700001	挡片 Shim	1		1.5U3H-700001
7	FU0849K0-G00	ISI密封圈d70 ISI-seal ring d70	1		FU0849K0-G00
8	1.5U3H-702000A	柱塞杆总成 Plunger piston	1	See OP.Parts	1.5U3H-702000A
9	1.5U3H-700004	支承环 Support ring	1		1.5U3H-700004
10	2.5CDJ32-00-07	放气螺塞 Air bleeder plug	1		2.5CDJ32-00-07
11	GB1235-76	O形密封圈16×2.4 O-ring	1		
12	1.5U3H-701000A	缸体总成 Body of cylinder	1	See OP.Parts	1.5U3H-701000A

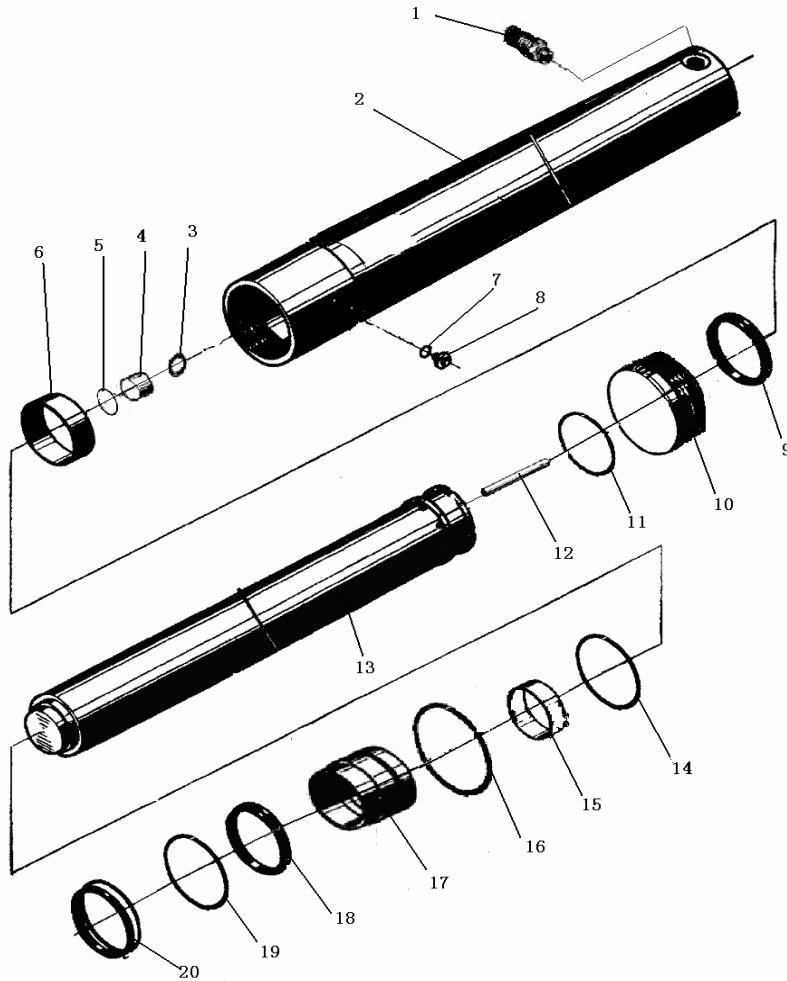
选配

<Optional Parts>

序号 Item No.	A	8	12
起升高度 Lift Height	代号 Part No	代号 Part No.	代号 Part No.
2500	1.5U2.5H-600000A	1.5U2.5H-602000A	1.5U2.5H-601000A
2700	1.5U2.7H-600000A	1.5U2.7H-602000A	1.5U2.7H-601000A
3000	(STD)	(STD)	(STD)
3300	1.5U3.3H-600000A	1.5U3.3H-602000A	1.5U3.3H-601000A
3600	1.5U3.6H-600000A	1.5U3.6H-602000A	1.5U3.6H-601000A
4000	1.5U4H-600000A	1.5U4H-602000A	1.5U4H-601000A

图 18 前升降油缸
Fig. 18 Front lift cylinder

2 级全自由门架 Duplex
1-1.8t



序号 Item No.	代号 Part No.	名称 Description	数量 Q't y	备注或适 用车型 Remarks or Series No	物料码 Code No.
A	N15N450-800000-001	短升降油缸 Lift cylinder, short	1	See OP. Parts	N15N450-800000-001
1	RC25N450-802000-W00	安全阀 safety valve	1		RC25N450-802000-W00
2	N15N450-801000-W01	缸体 Cylinder body	1	See OP. Parts	N15N450-801000-W01
3	GB893.1-86	挡圈 22 Snap shim22	1		
4	RC25N450-803000-W00	单向阀 check valve	1		RC25N450-803000-W00
5	GB1235-76	O 形密封圈 20×2.4 O-ring 20×2.4	1		
6	X15N450-800009-G00	WR 抗磨环 70×6520 75×65×20	1		X15N450-800009-G00
7	JB982-77	垫圈 6 Washer 6	1		
8	GB818-85	螺钉 M6×8 Bolt M6×8	1		
9	PT0300700-T46-G00	格莱圈 D70 greggains circle D70	1		PT0300700-T46-G00
10	X15N450-800004-W00	活塞 Piston	1		X15N450-800004-W00
11	RC25N450-800005-W00	钢丝挡圈 φ3 wire ring φ3	1		RC25N450-800005-W00
12	RC25N450-800006-W00	钢管 steel tube	1		RC25N450-800006-W00
13	N15N450-800001-W01	活塞杆 Piston rod	1	SeeOP.Part s	N15N450-800001-W01
14	GB1235-76	O 形密封圈 70×3.1 O-ring 70×3.1	1		

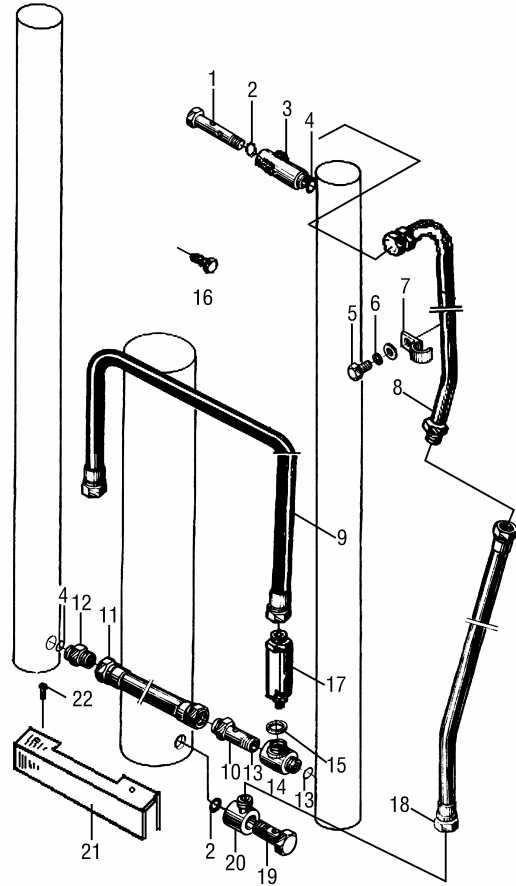
2 级全自由门架 1-1.8t 选配

Duplex 1-1.8t <Optional Parts>

号 Item No	A	2	13
起升高度 Lift Height	代号 Part No	代号 Part No	代号 Part No
2000	N15U200-800000-001	N15U200-801000-W01	N15U200-800001-W01
2500	N15U250-800000-001	N15U250-801000-W01	N15U250-800001-W01
2700	N15U270-800000-001	N15U270-801000-W01	N15U270-800001-W01
3000	(STD)	(STD)	(STD)
3300	N15U330-800000-001	N15U330-801000-W01	N15U330-800001-W01
3500	N15U350-800000-001	N15U350-801000-W01	N15U350-800001-W01
3600	N15U360-800000-001	N15U360-801000-W01	N15U360-800001-W01
4000	N15U400-800000-001	N15U400-801000-W01	N15U400-800001-W01

图 19 油路系统
Fig. 19 Oil pipe system

2 级全自由门架 Duplex
1-1.8t



序号 Item No.	代号 Part No.	名称 Description	数量 Q'ty	备注或适用 车型 Remarks or Series No	物料码 Code No.
A	N15U300-700000-000	油路系统 Oil pipe system	1	See OP.Parts -2007.8	N15U300-700000-000
1	1.5U3H-600003	铰接螺栓 Bolt	1		1.5U3H-600003
2	GB1235-76	O 形密封圈 26×2.4 O-ring 26×2.4	2		
3	1.5U3H-600002	铰接接头体 Connector	1		1.5U3H-600002
4	JB982-77	垫圈 18 Washer 18	2		
5	GB5783-86	螺栓 M8×16 Blot M8×16	1		
6	GB848-85	垫圈 8 Washer 8	1		
7	1.5U3H-600001	管夹 Clip	1		1.5U3H-600001
8	1.5U3H-601000	长硬管接头 Connector	1	See OP.Parts	1.5U3H-601000
9	N15M300-701000-000	油管总成 Rubber pipe	1		N15M300-701000-000
10	3M3H-700001	铰接螺栓 Blot	1		3M3H-700001
11	1.5M3H-700007	胶管接头 Rubber pipe	1		1.5M3H-700007
12	3M3H-700011	直通管接头 Connector	1		3M3H-700011
13	GB1235-76	O 形密封圈 24×2.4 O-ring 24×2.4	2		
14	N15U300-700009-000	接头体 Connector	1		N15U300-700009-000

附表

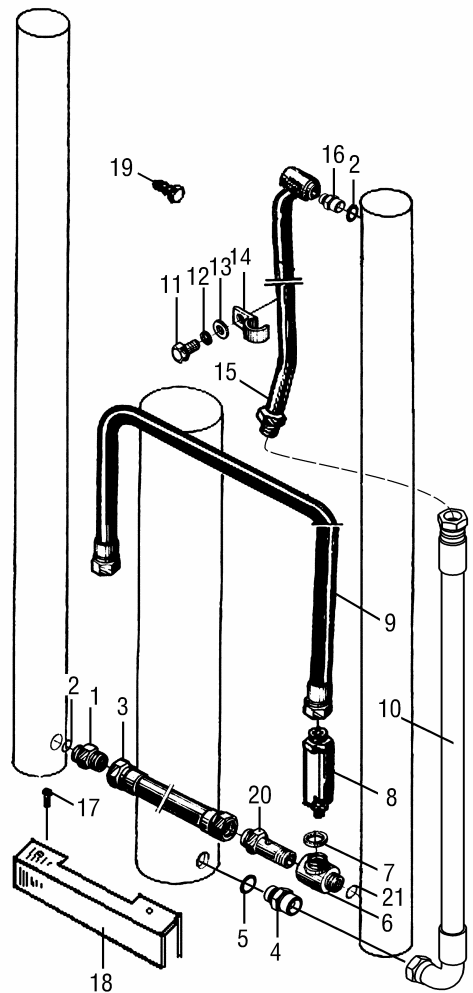
<Optional Parts>

序号 Item No.	A	8	18
起升高度 Lift Height	代号 Part No.	代号 Part No.	代号 Part No.
2500	N15U250-700000-000	1.5U2.5H-501000	1.5U2.5H-500004
2700	N15U270-700000-000	1.5U2.7H-501000	1.5U2.7H-500004
3000	(STD)	(STD)	(STD)
3300	N15U330-700000-000	1.5U3.3H-501000	1.5U3.3H-500004
3600	N15U360-700000-000	1.5U3.6H-501000	1.5U3.6H-600004
4000	N15U400-700000-000	1.5U4H-501000	1.5U4H-600004

图 20
Fig. 20

油路系统
Oil pipe system

2 级全自由门架 Duplex
1-1.8t



序号 Item No.	代号 Part No.	名称 Description	数量 Q'ty	备注或适用 车型 Remarks or Series No	物料码 Code No.
A	N15U300-700000-001	油路系统 Oil pipe system	1	See OP.Parts 2007.9-	N15U300-700000-001
1	1.5N4.5H-200006	直通管接头 Connector	1		1.5N4.5H-200006
2	JB982-77	垫圈 18 Washer	2		
3	1.5M3H-700007A	胶管接头 Rubber pipe	1		1.5M3H-700007A
4	N30N450-200003-000	直通管接头 Connector	1		N30N450-200003-000
5	JB982-77	垫圈 22 Washer 22	1		
6	N15U300-700009-001	接头体 Connector	1		N15U300-700009-001
7	JISB2401-P18-G00	O 形密封圈 P18 O-ring	1		JISB2401-P18-G00
8	N15M300-702000-000	限速阀 Speed limiting valve	1	NXSF-F16L -1.5T-G00	N15M300-702000-000
9	N15M300-701000-000	油管总成 Rubber pipe	1		N15M300-701000-000
10	2.5U3H-600005A	胶管接头 Rubber pipe	1	See OP.Parts	2.5U3H-600005A
11	GB5783-86	螺栓 M8×16 Blot	1		
12	GB93-87	垫圈 8 Washer	1		
13	GB97.1-85	垫圈 8 Washer	1		
14	1.5U3H-600001	管夹 Clip	1		1.5U3H-600001

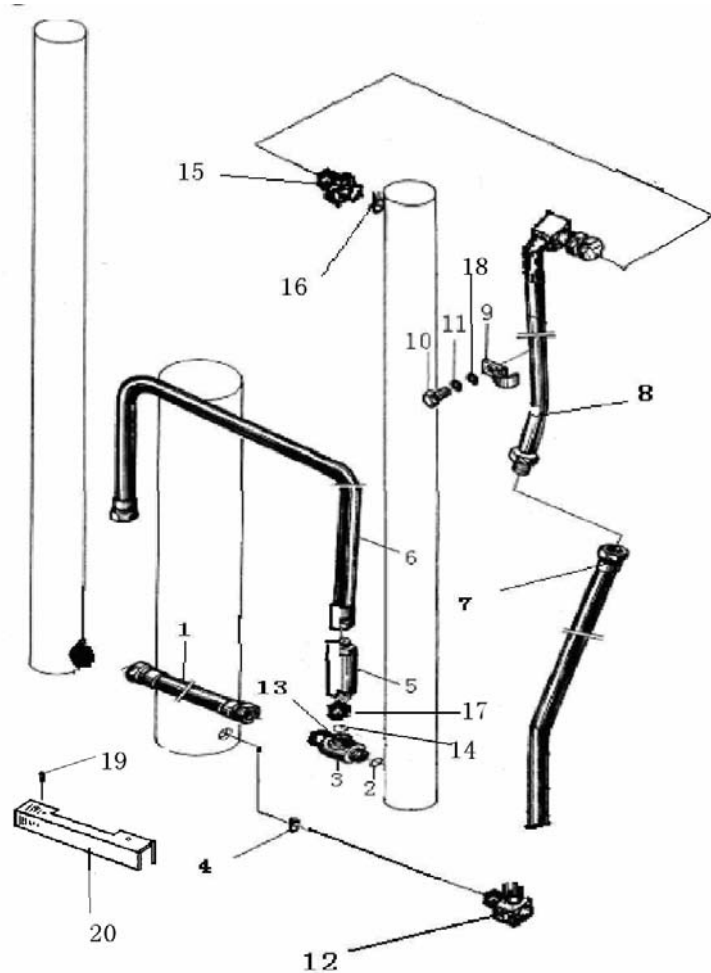
附表

<Optional Parts>

序号 Item No.	A	10	15
起升高度 Lift Height	代号 Part No.	代号 Part No.	代号 Part No.
2500	N15U250-700000-001	1.5U2.5H-500001	1.5U2.5H-501000A
2700	N15U270-700000-001	1.5U2.7H-500001	1.5U2.7H-501000A
3000	(STD)	(STD)	(STD)
3300	N15U330-700000-001	1.5U3.3H-500001	1.5U3.3H-501000A
3600	N15U360-700000-001	2.5U3H-600005A	1.5U3.6H-501000A
4000	N15U400-700000-001	2.5U3H-600005A	1.5U4H-501000A

图 21 油路系统
Fig. 21 Oil pipe system

2 级全自由门架 Duplex
1-1.8t



序号 Item No.	代号 Part No.	名称 Description	数量 Q'ty	备注或适用 车型 Remarks or Series No	物料码 Code No.
A	N15U300-700000-002	油路系统 Oil pipe system	1	See OP.Parts 2010.03-	N15U300-700000-002
1	N15N450-200022-002	胶管接头 Rubber pipe	1		N15N450-200022-002
2	GB1235-76	O 形密封圈 20×2.4 O-ring 20×2.4	1		
3	RC25U300-704000-000	三通接头 Connector	1		RC25U300-704000-000
4	JB982-77	垫圈 22 Washer 22	1		
5	XSF2-F16L-1.5/40-G00	单向限速阀 Speed limiting valve	1		XSF2-F16L-1.5/40-G00
6	N15U300-701000-002	油管总成 Rubber pipe	1		N15U300-701000-002
7	2.5U3H-600005A	胶管接头 Rubber pipe	1	See OP.Parts	2.5U3H-600005A
8	1.5U3H-601000A	钢油管 Oil pipe	1	See OP.Parts	1.5U3H-601000A
9	1.5U3H-600001	管夹 Clip	1		1.5U3H-600001
10	GB5783-86	螺栓 M8×16 Bolt M8×16	2		
11	GB93-85	垫圈 8 Washer 8	2		
12	N30N450-200003-000	直通接头 Connector	1		N30N450-200003-000
13		无此零件 Without part			
14	GB1235-76	O 形密封圈 24×2.4 O-ring 24×2.4	2		

附表

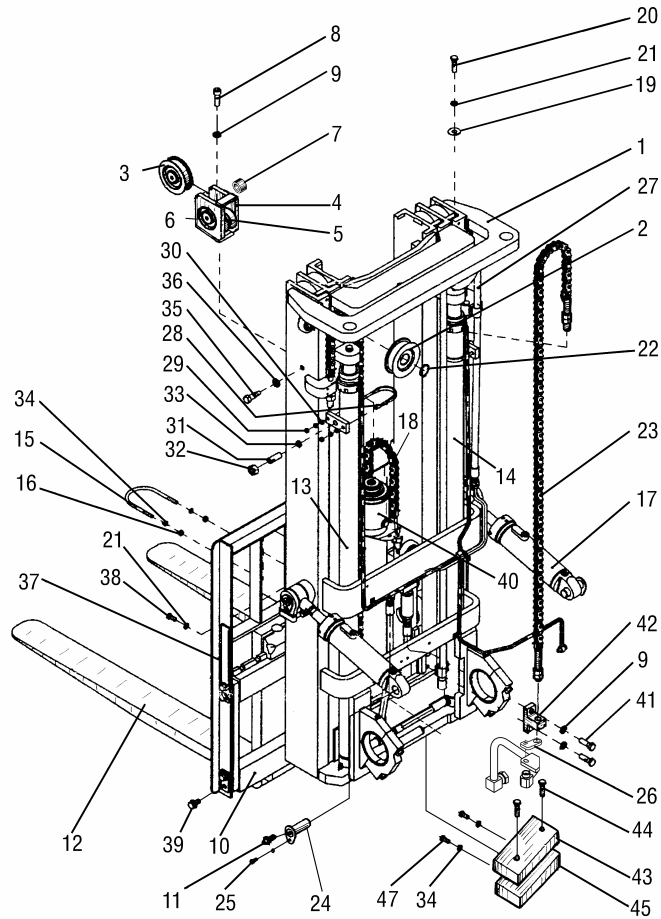
<Optional Parts>

序号 Item No.	A	7	8
起升高度 Lift Height	代号 Part No.	代号 Part No.	代号 Part No.
2500	N15U250-700000-002	1.5U2.5H-501000	1.5U2.5H-500004
2700	N15U270-700000-002	1.5U2.7H-501000	1.5U2.7H-500004
3000	(STD)	(STD)	(STD)
3300	N15U330-700000-002	1.5U3.3H-501000	1.5U3.3H-500004
3600	N15U360-700000-002	1.5U3.6H-501000	1.5U3.6H-600004
4000	N15U400-700000-002	1.5U4H-501000	1.5U4H-600004

图 22
Fig.22

起升组件
Lifting part

3级门架 Triplex
1-1.8t

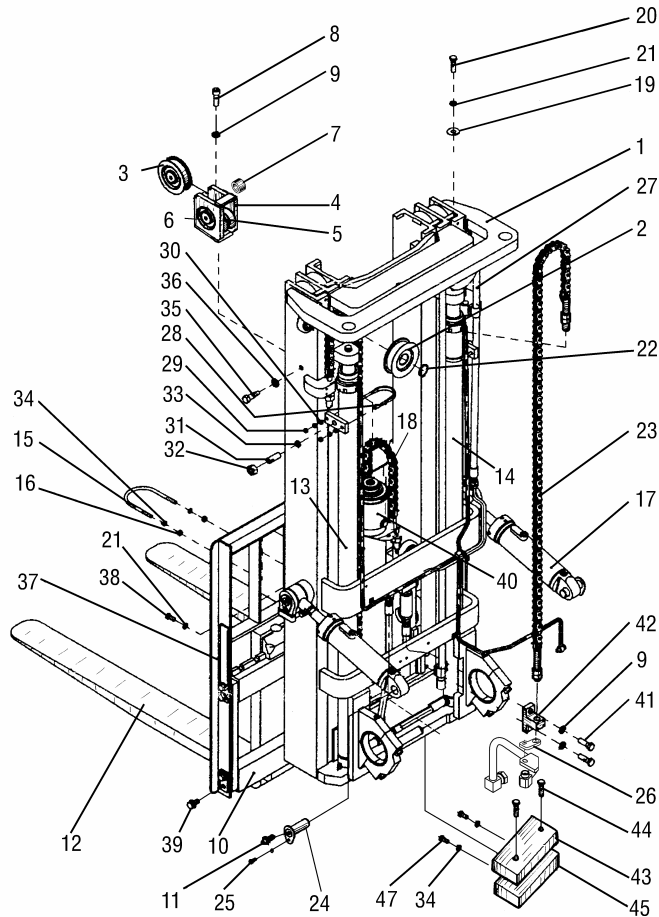


序号 Item No.	代号 Part No.	名称 Description	数量 Q'ty	备注或适用 车型 Remarks or Series No	物料码 Code No.
1	N15N450-100000-000	门架 Mast	1	Fig.22	N15N450-100000-000
2	780708-G00	链轮 Chain wheel	2		780708-G00
3	780310K-G00	链轮 Chain wheel	1	1-1.5t	780310K-G00
	CW310-G00	链轮 Chain wheel	1	1.8t	CW310-G00
4	1.5U3H-001000	链轮座 Chain seat	1		1.5U3H-001000
5	1.5N4.5H-000004	链轮轴 Chain wheel, shaft	1		1.5N4.5H-000004
6	GB894.1-86	挡圈50 Snap ring 50	2		
7	1.5DC3-000004	隔套 Sleeve	2		1.5DC3-000004
8	GB70-85	螺钉M16×45 Screw M16×45	1		
9	GB93-87	垫圈16 Washer 16	5		
10	N15N450-300000-000	货叉架总成 Fork carriage assy'	1		N15N450-300000-000
	N18N450-300000-000	货叉架总成 Fork carriage assy'	1		N18N450-300000-000
11	GB1152-89	油杯M10×1 Oil cup M10×1	4		
12	N15M300-010000-W00	货叉总成 Fork assembly	2	Fig.25	N15M300-010000-W00
	N18M300-010000-000	货叉总成 Fork assembly	2	Fig.25	N18M300-010000-000

图 22
Fig.22

起升组件
Lifting part

3级门架 Triplex
1-1.8t

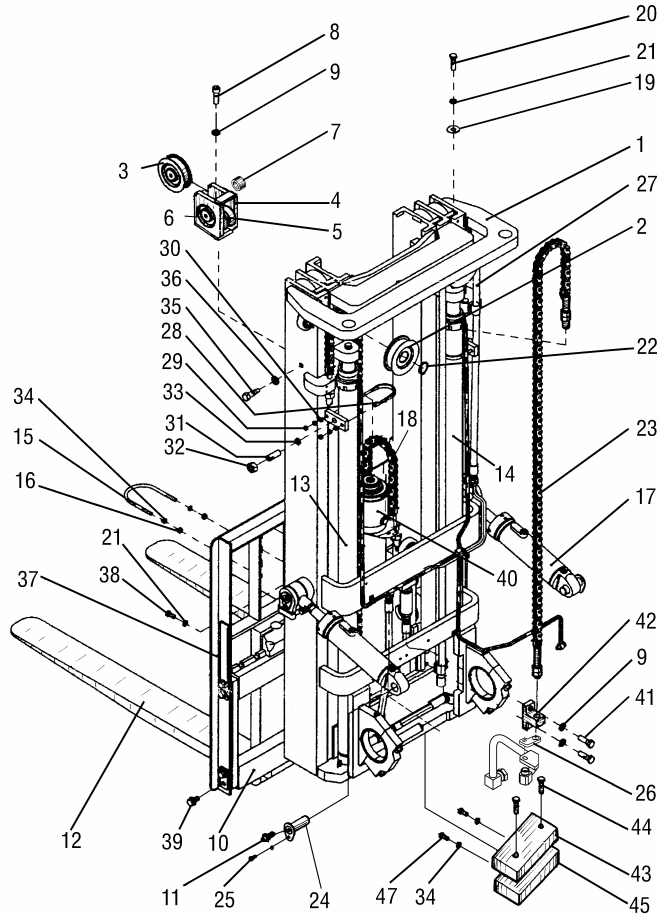


序号 Item No.	代号 Part No.	名称 Description	数量 Q'ty	备注或适用 车型 Remarks or Series No	物料码 Code No.
13	1.5M3H-500000	左升降油缸 Lift cylinder, left	1	Fig.26 -2006.9	1.5M3H-500000
	1.5M3H-500000A	左升降油缸 Lift cylinder, left	1	Fig.27 -2010.02	1.5M3H-500000A
	N15N450-400000-001	左升降油缸 Lift cylinder, left	1	Fig.27 2010.03-	N15N450-400000-001
14	1.5M3H-400000	右升降油缸 Lift cylinder, right	1	Fig.26 -2006.9	1.5M3H-400000
	1.5M3H-400000A	右升降油缸 Lift cylinder, right	1	Fig.27 -2010.02	1.5M3H-400000A
	N15N450-500000-001	右升降油缸 Lift cylinder, right	1	Fig.27 2010.03-	N15N450-500000-001
15	1.5U3H-000001	短缸固定螺栓 Bolt	1	-2010.02	1.5U3H-000001
	1.5U3H-000001-001	短缸固定螺栓 Bolt	1	2010.03-	1.5U3H-000001-001
16	GB6170-86	螺母M10 Nut M10	2		
17	N15M430-600000-002	倾斜油缸 Tilt cylinder	2	Fig.9 ≤5m	N15M430-600000-002
	N15N550-600000-002	倾斜油缸 Tilt cylinder	2	Fig.28 ≥5.5m	N15N550-600000-002
18	1.5U3H-002000	链条总成 Chain	2	Fig.21 1-1.5t	1.5U3H-002000
	N18N450-040000-000	链条总成 Chain	2	Fig.21 1.8t	N18N450-040000-000
19	1.5M3H-000003	调整垫圈 Adjusting gasket	2组		1.5M3H-000003
20	GB5782-86	螺栓M12×60 Bolt M12×60	2		

图 22
Fig.22

起升组件
Lifting part

3级门架 Triplex
1-1.8t

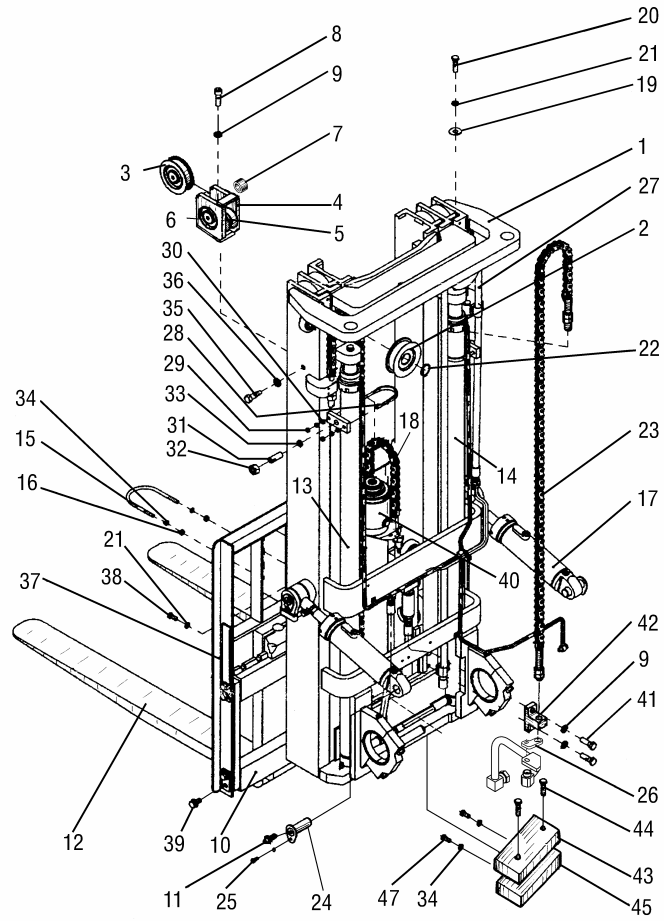


序号 Item No.	代号 Part No.	名称 Description	数量 Q'ty	备注或适用 车型 Remarks or Series No	物料码 Code No.
21	GB93-87	垫圈12 Washer 12	3		
22	GB894.1-86	挡圈40 Snap ring 40	2		
23	1.5N4.5H-001000	链条总成 Chain	2	Fig.20 1-1.5t	1.5N4.5H-001000
	N18N450-030000-000	链条总成 Chain	2	Fig.20 1.8t	N18N450-030000-000
24	N15M300-001000-000	销轴 Pin shaft	4		N15M300-001000-000
25	N30M300-004000-000	螺栓M10×1.25×20 Bolt M10×1.25×20	4		N30M300-004000-000
26	1.5N4.5H-000001	链条支座 Chain seat	2		1.5N4.5H-000001
27	N15N450-200000-000	油路系统 Mast piping	1	Fig.23 -2007.9	N15N450-200000-000
	N15N450-200000-001	油路系统 Mast piping	1	Fig.24 -2010.02	N15N450-200000-001
	N15N450-200000-001	油路系统 Mast piping	1	Fig.24 2010.02-	N15N450-200000-001
28	N15N450-000005-000	油缸固定螺栓 Bolt	2		N15N450-000005-000
29	GB6170-86	螺母M8 Nut M8	8		
30	N30N450-000013-000	厚垫圈8 Washer 8	4		N30N450-000013-000
31	N30N450-000005-000	螺钉M20×53 Screw M20×53	2		N30N450-000005-000
32	GB6170-86	螺母M20 Nut M20	2		

图 22
Fig.22

起升组件
Lifting part

3级门架 Triplex
1-1.8t

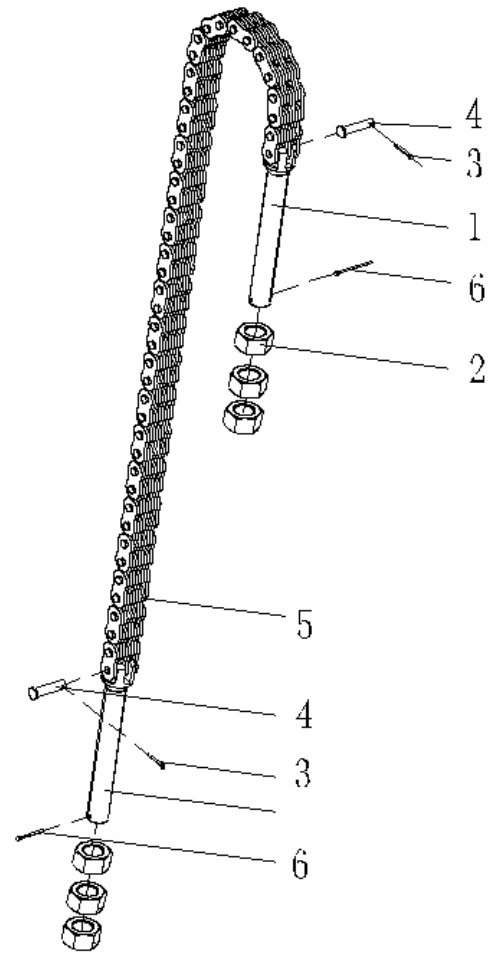


序号 Item No.	代号 Part No.	名称 Description	数量 Q'ty	备注或适用 车型 Remarks or Series No	物料码 Code No.
33	N30M300-000009-000	塞子 Plug	2		N30M300-000009-000
34	GB93-87	垫圈10 Washer 10	6 2	-2007.6 数量6 2007.7-数量2	
35	2025M3-100005	限位螺钉 Screw	2		2025M3-100005
36	GB93-87	垫圈18 Washer 18	2		
37	N15M300-020000-002	挡货架 Load bracket	1		N15M300-020000-002
38	GB5783-86	螺栓M12×25 Bolt M12×25	1		
39	N30M300-006000-000	螺栓M14×1.5×30 Bolt M14×1.5×30	4		N30M300-006000-000
40	1.5U3H-700000A	前升降油缸 Lift cylinder, front	1	See OP.Parts Fig.16	1.5U3H-700000A
	N15N450-800000-001	前升降油缸 Lift cylinder, front	1	See OP.Parts Fig.16	N15N450-800000-001
41	GB5786-86	螺栓M16×1.5×35 Bolt M16×1.5×35	4		
42	1.5N4.5H-000005	固定板 fixation plate	1	2007. 10-	1.5N4.5H-000005
43	1.5U3H-000003	小缓冲垫 Buffer pad	2	-2007. 6	1.5U3H-000003
44	GB819-85	螺钉M6×10 Screw M6×10	4	-2007. 6	
45	1.5U3H-000004	挡板 Plate	2	-2007. 6	1.5U3H-000004
46	GB70-85	螺钉M10×30 Screw M10×30	4	-2007. 6	

图 23
Fig.23

链条总成
Chain

3 级门架 Triplex
1-1.8t



序号 Item No.	代号 Part No.	名称 Description	数量 Q'ty	备注或适用 车型 Remarks or Series No	物料码 Code No.
A	1.5N4.5H-001000	链条总成 Chain	1	See OP.Parts 1-1.5t	1.5N4.5H-001000
B	N18N450-030000-000	链条总成 Chain	1	See OP.Parts 1.8t	N18N450-030000-000
1	1.5M3H-002001	链条接头 Connector	2	1-1.5t	1.5M3H-002001
	N18N450-030001-000	链条接头 Connector	2	1.8t	N18N450-030001-000
2	GB6171-86	螺母M16×1.5 Nut M16×1.5	6		
3	GB91-86	销3.2×20 Pin 3.2×20	2	1-1.5t	
	GB91-86	销3.2×45 Pin 3.2×45	2	1.8t	
4	1.5M3H-002002	销轴 Pin shaft	2	1-1.5t	1.5M3H-002002
	2030TT-104002	销轴 Pin shaft	2	1.8t	2030TT-104002
5	GB/T6074-1995	板式链LH1223×101 Leaf chain LH1223×101	1	See OP.Parts 1-1.5t	
	N18N450-030100-W00	LH1623链条 Leaf chain LH1623	1	See OP.Parts 1.8t	N18N450-030100-W00
6	GB91-86	销2.5×25 Pin 2.5×25	2		

附表

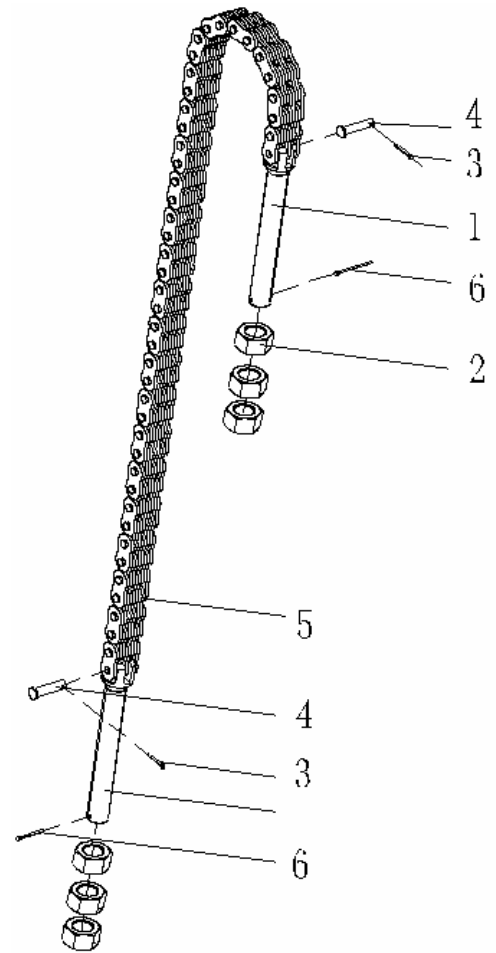
<Optional Parts>

Item No.	A	5(1-1.5t)	B	5(1.8t)
Lift Height	代号 Part No.	名称 Description	代号 Part No.	名称 Description
4000	N15N400-030000-000	链条 LH1223×95	N18N400-030000-000	链条 LH1623×71
4300	N15N430-030000-000	链条 LH1223×101	N18N430-030000-000	链条 LH1623×75
4500	(STD)	(STD)	(STD)	(STD)
4800	N15N480-030000-000	链条 LH1223×107	N18N480-030000-000	链条 LH1623×81
5000	N15N500-030000-000	链条 LH1223×109	N18N500-030000-000	链条 LH1623×83
5500	N15N550-030000-000	链条 LH1223×119	N18N550-030000-000	链条 LH1623×89
6000	N15N600-030000-000	链条 LH1223×131	N18N600-030000-000	链条 LH1623×99

图 24
Fig.24

链条总成
Chain

3 级门架 Triplex
1-1.8t



序号 Item No.	代号 Part No.	名称 Description	数量 Q'ty	备注或适用 车型 Remarks or Series No	物料码 Code No.
A	1.5U3H-002000	链条总成 Chain	2	See OP.Parts 1-1.5t	1.5U3H-002000
B	N18N450-040000-000	链条总成 Chain	2	See OP.Parts 1.8t	N18N450-040000-000
1	3M3C-002001A	链条接头 Connector	2	1-1.5t	3M3C-002001A
	3.5M3H-002001	链条接头 Connector	2	1.8t	3.5M3H-002001
2	GB6171-86	螺母M16×1.5 Nut M16×1.5	6		
3	GB91-86	开口销3×20 Pin 3×20	2	1-1.5t	
	GB91-86	开口销3.2×45 Pin 3.2×45	2	1.8t	
4	2030TT-104002	销轴 Pin shaft	2	1-1.5t	2030TT-104002
	3.5M3H-002002	销轴 Pin shaft	2	1.8t	3.5M3H-002002
5	GB/T6074-1995	板式链LH1623×55 Leaf chain LH1623×55	1	See OP.Parts 1-1.5t	GB/T6074-1995
	N18N450-040100-W00	LH1634链条 Leaf chain LH16234	1	See OP.Parts 1.8t	N18N450-040100-W00
6	GB91-86	销2.5×28 Pin 2.5×28	2	1-1.5t	
	GB91-86	销3.2×28 Pin 3.2×28	2	1.8t	

附表

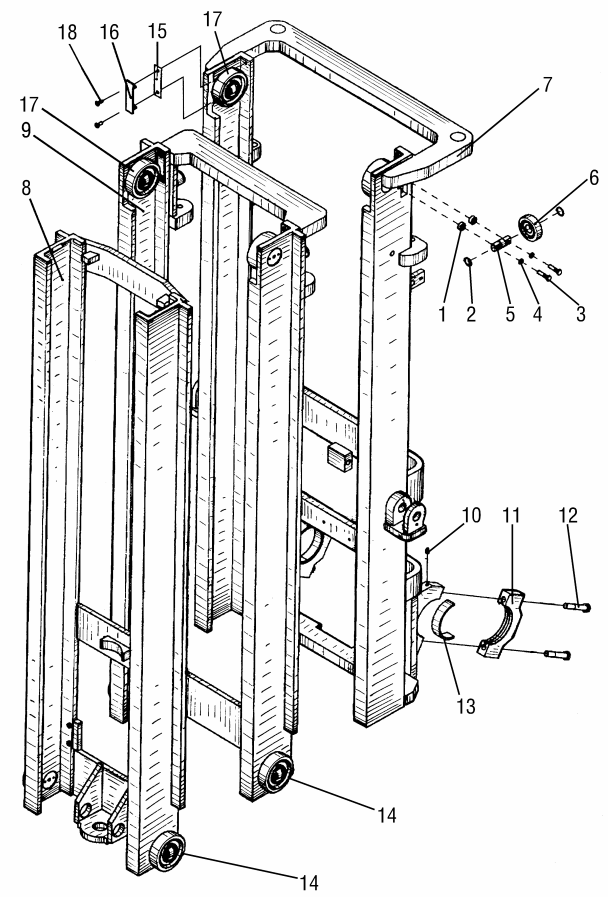
<Optional Parts>

Item No.	A	5(1-1.5t)	B	5(1.8t)
Lift Height	代号 Part No.	名称 Description	代号 Part No.	名称 Description
4000	N15N400-040000-000	链条 LH1623×51	N18N400-040000-000	链条 LH1634×51
4300	N15N430-040000-000	链条 LH1623×53	N18N430-040000-000	链条 LH1634×53
4500	(STD)	(STD)	(STD)	(STD)
4800	N15N480-040000-000	链条 LH1623×59	N18N480-040000-000	链条 LH1634×59
5000	N15N500-040000-000	链条 LH1623×61	N18N500-040000-000	链条 LH1634×61
5500	N15N550-040000-000	链条 LH1623×63	N18N550-040000-000	链条 LH1634×63
6000	N15N600-040000-000	链条 LH1623×65	N18N600-040000-000	链条 LH1634×65

图 25
Fig.25

门架
Mast

3级门架 Triplex
1-1.8t



序号 Item No.	代号 Part No.	名称 Description	数量 Q'ty	备注或适用 车型 Remarks or Series No	物料码 Code No.
1	1.5N4.5H-100001	调整垫圈 Adjusting gasket	4 组	-2007.6	1.5N4.5H-100001
2	GB894.1-86	挡圈20 Snap ring 20	4	-2007.6	
3	GB5782-86	螺栓M8×28 Bolt M8×28	4	-2007.6	
4	GB93-87	垫圈8 Washer 8	4	-2007.6	
5	1.5N4.5H-100002	侧滚轮轴 Side roller shaft	2	-2007.6	1.5N4.5H-100002
6	GB278-82	轴承80304 Bearing 80304	2	-2007.6	
7	N15N450-101000-000	外门架 Outer mast	1	See OP.Parts	N15N450-101000-000
8	N15N450-102000-000	内门架 Inner mast	1	See OP.Parts	N15N450-102000-000
9	N15N450-103000-000	中门架 Middle mast	1	See OP.Parts	N15N450-103000-000
10	GB1152-89	油杯M10×1 Oil cup M10×1	2		
11	N15M300-000005-000	轴承盖 Bearing cap	2		N15M300-000005-000
	N15M300-000005-001	轴承盖 Bearing cap	2		N15M300-000005-001
12	N15M300-005000-000	螺栓M14×1.5×45 Bolt M14×1.5×45	4		N15M300-005000-000
13	N15M300-000006-000	轴瓦 Bearing liner	2		N15M300-000006-000
14	760211A-G00	复合滚轮 φ 113.2 Roller φ 113.2	4		760211A-G00

附表

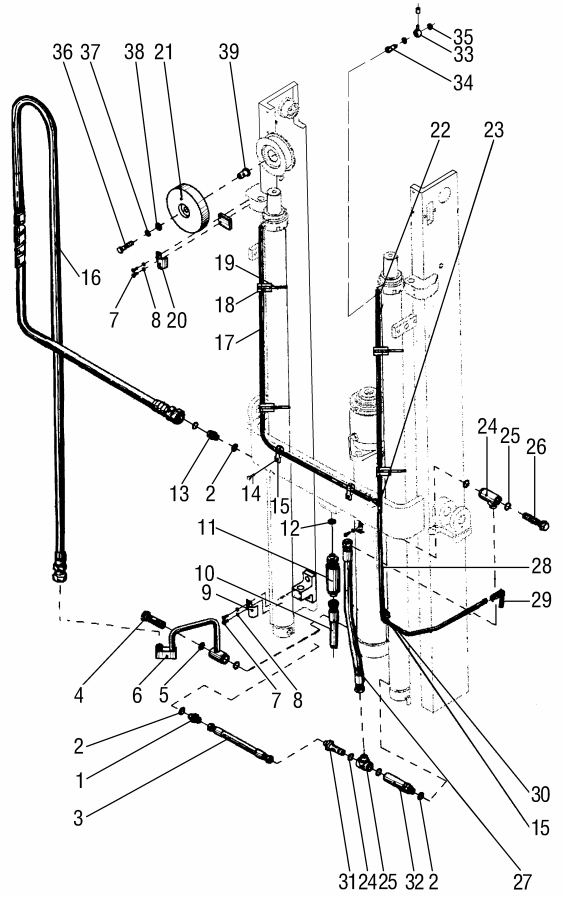
<Optional Parts>

Item No.	7	8	9
Lift Height	代号 Part No.	代号 Part No.	代号 Part No.
4000	N15N400-101000-000	N15N400-102000-000	N15N400-103000-000
4300	N15N430-101000-000	N15N430-102000-000	N15N430-103000-000
4500	(STD)	(STD)	(STD)
4800	N15N480-101000-000	N15N480-102000-000	N15N480-103000-000
5000	N15N500-101000-000	N15N500-102000-000	N15N500-103000-000
5500	N15N550-101000-000	N15N550-102000-000	N15N550-103000-000
6000	N15N600-101000-000	N15N600-102000-000	N15N600-103000-000

图 26
Fig.26

油路系统
Mast piping

3 级门架 Triplex
1-1.8t -2007.9

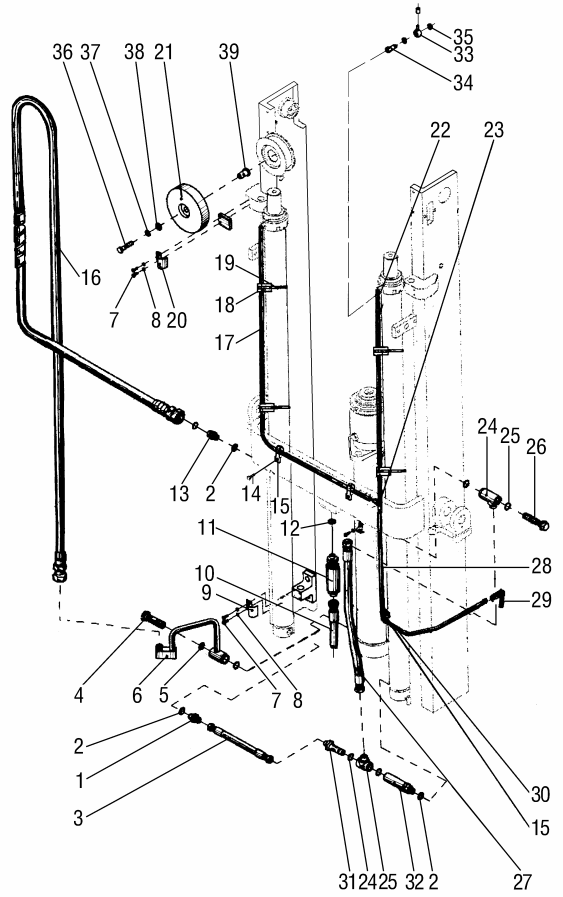


序号 Item No.	代号 Part No.	名称 Description	数量 Q'ty	备注或适用 车型 Remarks or Series No	物料码 Code No.
1	1.5N4.5H-200014	直通管接头 Connector	1		1.5N4.5H-200014
2	JB982-77	垫圈18 Washer 18	3		
3	1.5N4.5H-200010	胶管接头 Connector	1		1.5N4.5H-200010
4	2.5N4.5H-200004	铰接螺栓 Bolt	1		2.5N4.5H-200004
5	GB1235-76	O形密封圈26×2.4 O-ring 26×2.4	2		
6	1.5N4.5H-201000	硬管接头 Connector	1		1.5N4.5H-201000
7	GB5783-86	螺栓M6×12 Bolt M6×12	4		
8	GB97.1-85	垫圈6 Washer 6	2		
9	1.5N4.5H-200001	管夹 Clip	1		1.5N4.5H-200001
10	1.5N4.5H-200002	胶管接头 Connector	1		1.5N4.5H-200002
11	1.5M3H-701000	单向限速阀 Speed limiting valve	1		1.5M3H-701000
12	JISB2401-P18-G00	O形密封圈P18 O-ring P18	1		JISB2401-P18-G00
13	1.5N4.5H-200006	直通管接头 Connector	1		1.5N4.5H-200006
14	S16M300-700003-000	管夹 Clip	1		S16M300-700003-000
15	N30M300-003000-000	螺栓M8×1.25×16 Bolt M8×1.25×16	2		N30M300-003000-000

图 26
Fig.26

油路系统
Mast piping

3 级门架 Triplex
1-1.8t -2007.9



序号 Item No.	代号 Part No.	名称 Description	数量 Q'ty	备注或适用 车型 Remarks or Series No	物料码 Code No.
16	1.5N4.5H-200015	胶管接头 Connector	1	See OP.Parts	1.5N4.5H-200015
17	N15N450-200008-000	回油管 $\phi 14.5/\phi 9.5$ Return oil pipe	1	See OP.Parts L=1210	N15N450-200008-000
18	N30M300-700002-000	镶边 Band	4		N30M300-700002-000
19	GT-3001-G00	通用尼龙扎带 Clamp-band	4		GT-3001-G00
20	1.5N4.5H-200004	管夹 Clip	1		1.5N4.5H-200004
21	N15N450-200010-000	滑轮 Pulley wheel	1		N15N450-200010-000
22	N15N450-200011-000	回油管 $\phi 14.5/\phi 9.5$ Return oil pipe	1	See OP.Parts L=770	N15N450-200011-000
23	N30M300-700005-000	三通接头 Connector	1		N30M300-700005-000
24	1.5N4.5H-200007	铰接接头体 connector	1		1.5N4.5H-200007
25	GB1235-76	O形密封圈 24×2.4 O-ring 24×2.4	3		
26	1.5N4.5H-200012	铰接螺栓 Bolt	1		1.5N4.5H-200012
27	N15N450-200014-000	胶管接头 Connector	1		N15N450-200014-000
28	N15N450-200015-000	回油管 $\phi 14.5/\phi 9.5$ Return oil pipe	1	L=1930	N15N450-200015-000
29	N15M300-700010-000	接头 Connector	1		N15M300-700010-000
30	N30M300-700008-000	管夹 Clip	1		N30M300-700008-000

附表

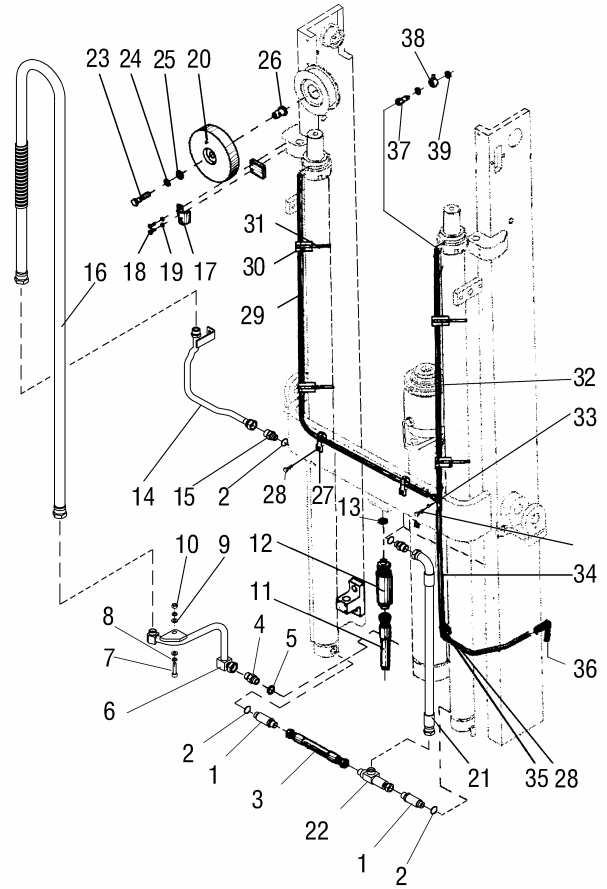
<Optional Parts>

Item No.	16	17		22	
Lift Height	代号 Part No.	代号 Part No.	名称 Description	代号 Part No.	名称 Description
4000	1.5N4H-200015	N15N400-200008-000	回油管 $\phi 14.5/\phi 9.5 \times 1085$	N15N400-200011-000	回油管 $\phi 14.5/\phi 9.5 \times 645$
4300	1.5N4.3H-200015	N15N430-200008-000	回油管 $\phi 14.5/\phi 9.5 \times 1185$	N15N430-200011-000	回油管 $\phi 14.5/\phi 9.5 \times 745$
4500	(STD)	(STD)	(STD)	(STD)	(STD)
4800	1.5N4.8H-200015	N15N480-200008-000	回油管 $\phi 14.5/\phi 9.5 \times 1310$	N15N480-200011-000	回油管 $\phi 14.5/\phi 9.5 \times 870$
5000	1.5N5H-200015	N15N500-200008-000	回油管 $\phi 14.5/\phi 9.5 \times 1360$	N15N500-200011-000	回油管 $\phi 14.5/\phi 9.5 \times 920$
5500	1.5N5.5H-200015	N15N550-200008-000	回油管 $\phi 14.5/\phi 9.5 \times 1535$	N15N550-200011-000	回油管 $\phi 14.5/\phi 9.5 \times 1095$
6000	1.5N6H-200015	N15N600-200008-000	回油管 $\phi 14.5/\phi 9.5 \times 1760$	N15N600-200011-000	回油管 $\phi 14.5/\phi 9.5 \times 1320$

图 27
Fig.27

油路系统
Mast piping

3 级门架 Triplex
1-1.8t -2010.02

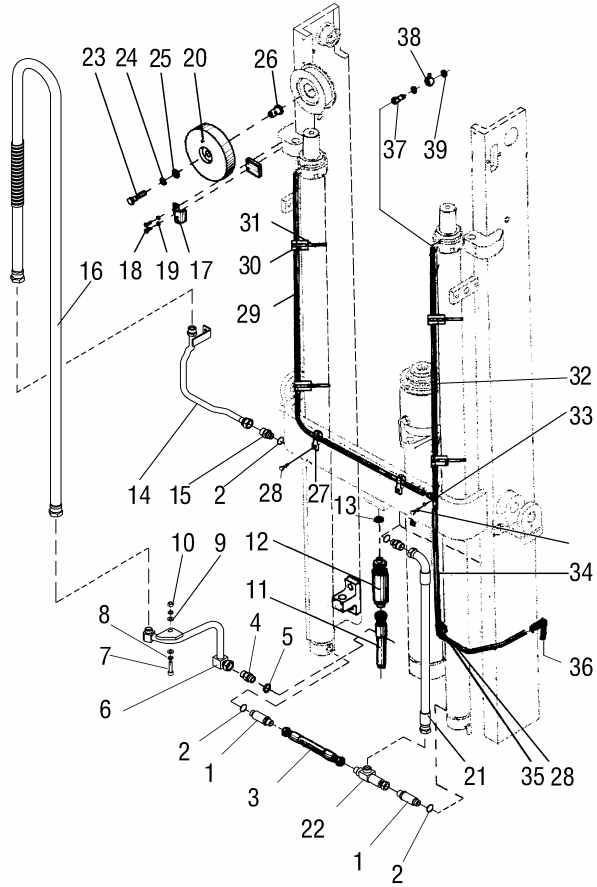


序号 Item No.	代号 Part No.	名称 Description	数量 Q'ty	备注或适用 车型 Remarks or Series No	物料码 Code No.
1	1.5N4.5H-200014A	直通管接头 Connector	2		1.5N4.5H-200014A
2	JB982-77	垫圈18 Washer 18	5		
3	1.5N4.5H-200010A	胶管接头 Connector	1		1.5N4.5H-200010A
4	N30N450-200003-000	直通接头 Connector	1		N30N450-200003-000
5	JB982-77	垫圈22 Washer 22	1		
6	1.5N4.5H-201000A	硬管接头 Connector	1		1.5N4.5H-201000A
7	GB70-85	螺钉M10×35 screw M10×35	1		
8	GB93-87	垫圈10 Washer 10	2		
9	GB97.1-85	垫圈10 Washer 10	2		
10	GB6170-86	螺母M10 Nut M10	1		
11	1.5N4.5H-200002A	胶管接头 Connector	1		1.5N4.5H-200002A
12	1.5M3H-701000	单向限速阀 Speed limiting valve	1		1.5M3H-701000
13	GB1235-76	O形密封圈24×2.4 O-ring 24×2.4	1		
14	1.5N4.5H-202000	钢油管 Oil pipe	1		1.5N4.5H-202000
15	3N4.5H-200001	直通管接头 Connector	2		3N4.5H-200001

图 27
Fig.27

油路系统
Mast piping

3 级门架 Triplex
1-1.8t -2010.02

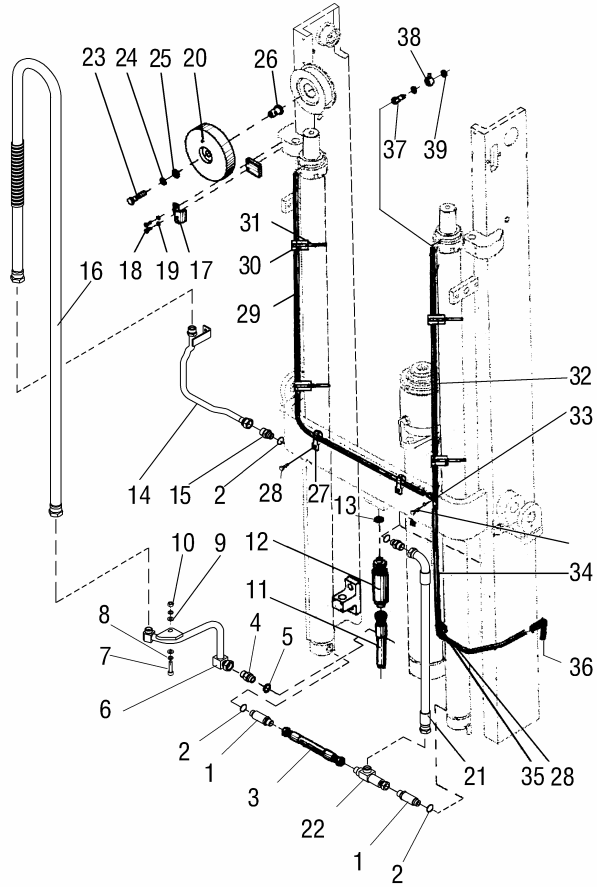


序号 Item No.	代号 Part No.	名称 Description	数量 Q'ty	备注或适用 车型 Remarks or Series No	物料码 Code No.
16	1.5N4.5H-200015A	胶管接头 Connector	1	See OP.Parts	1.5N4.5H-200015A
17	1.5N4.5H-200004	管夹 Clip	1		1.5N4.5H-200004
18	GB5783-86	螺栓M6×10 Bolt M16×10	6		
19	GB93-87	垫圈6 Washer 6	9		
20	1.5N4.5H-200005	滑轮 Pulley wheel	1	-2007.9	1.5N4.5H-200005
	1.5N4.5H-200005A	滑轮 Pulley wheel	1	2007.10-	1.5N4.5H-200005A
21	2.5N4.5H-200008A	胶管接头 Connector	1		2.5N4.5H-200008A
22	1.5N4.5H-203000	三通接头 Connector	1		1.5N4.5H-203000
23	GB5782-86	螺栓M14×55 Bolt M14×55	1		
24	GB93-87	垫圈14 Washer 14	1		
25	GB97.1-85	垫圈14 Washer 14	1		
26	N15N450-200021-000	轴套 Shaft sleeve	1		N15N450-200021-000
27	S16M300-700003-000	管夹 Clip	2		S16M300-700003-000
28	N30M300-003000-000	螺栓M8×1.25×16 Bolt M8×1.25×16	3		N30M300-003000-000
29	N15N450-200008-000	回油管 φ 14.5/φ 9.5 Return oil pipe	1	See OP.Parts L=1210	N15N450-200008-000

图 27
Fig.27

油路系统
Mast piping

3 级门架 Triplex
1-1.8t -2010.02



序号 Item No.	代号 Part No.	名称 Description	数量 Q'ty	备注或适用 车型 Remarks or Series No	物料码 Code No.
30	N30M300-700002-000	镶边 Band	4		N30M300-700002-000
31	GT-3001-G00	通用尼龙扎带 Clamp-band	4		GT-3001-G00
32	N15N450-200011-000	回油管 $\phi 14.5/\phi 9.5$ Return oil pipe	1	See OP.Parts L=770	N15N450-200011-000
33	N30M300-700005-000	三通接头 Connector	1		N30M300-700005-000
34	N15N450-200015-000	回油管 $\phi 14.5/\phi 9.5$ Return oil pipe	1	L=1930	N15N450-200015-000
35	N30M300-700008-000	管夹 Clip	1		N30M300-700008-000
36	N15M300-700010-000	接头 Connector	1		N15M300-700010-000
37	3-60-00-30A	铰接螺栓 Bolt	2		3-60-00-30A
38	3-60-00-27A	低压接头 connector	2		3-60-00-27A
39	3-10-20-07	垫圈 Washer	2		3-10-20-07

附表

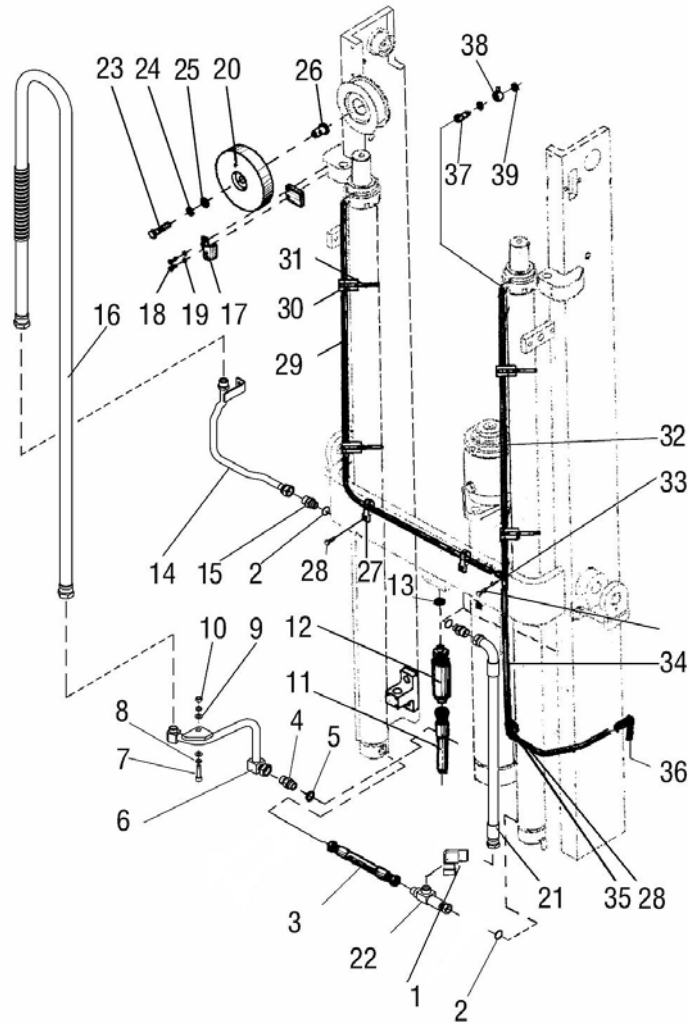
<Optional Parts>

Item No.	16	29		32	
Lift Height	代号 Part No.	代号 Part No.	名称 Description	代号 Part No.	名称 Description
4000	1.5N4H-200015A	N15N400-200008-000	回油管 ϕ 14.5/ ϕ 9.5 \times 1085	N15N400-200011-000	回油管 ϕ 14.5/ ϕ 9.5 \times 645
4300	1.5N4.3H-200015A	N15N430-200008-000	回油管 ϕ 14.5/ ϕ 9.5 \times 1185	N15N430-200011-000	回油管 ϕ 14.5/ ϕ 9.5 \times 745
4500	(STD)	(STD)	(STD)	(STD)	(STD)
4800	1.5N4.8H-200015A	N15N480-200008-000	回油管 ϕ 14.5/ ϕ 9.5 \times 1310	N15N480-200011-000	回油管 ϕ 14.5/ ϕ 9.5 \times 870
5000	1.5N5H-200015A	N15N500-200008-000	回油管 ϕ 14.5/ ϕ 9.5 \times 1360	N15N500-200011-000	回油管 ϕ 14.5/ ϕ 9.5 \times 920
5500	1.5N5.5H-200015A	N15N550-200008-000	回油管 ϕ 14.5/ ϕ 9.5 \times 1535	N15N550-200011-000	回油管 ϕ 14.5/ ϕ 9.5 \times 1095
6000	1.5N6H-200015A	N15N600-200008-000	回油管 ϕ 14.5/ ϕ 9.5 \times 1760	N15N600-200011-000	回油管 ϕ 14.5/ ϕ 9.5 \times 1320

图 28
Fig.28

油路系统
Mast piping

3 级门架 Triplex
1-1.8t 2010.03-

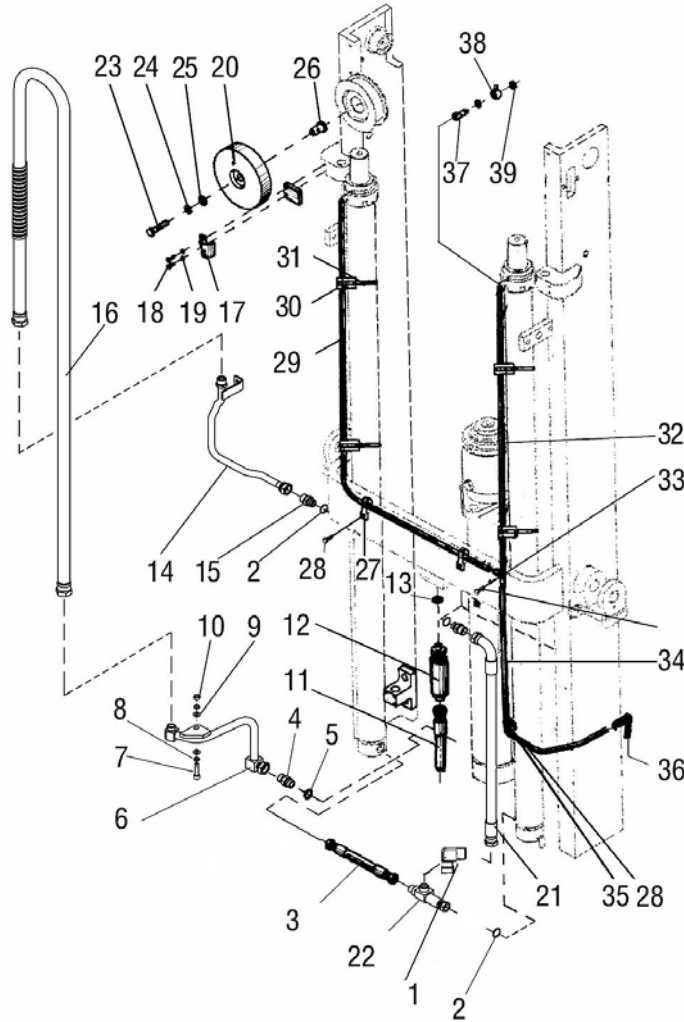


序号 Item No.	代号 Part No.	名称 Description	数量 Q'ty	备注或适用 车型 Remarks or Series No	物料码 Code No.
1	RC25N450-201000-000	90° 管接头 Connector	1		RC25N450-201000-000
2	GB1235-76	O形密封圈20×2.4 O-ring 20×2.4	5		
3	N15N450-200022-002	胶管接头 Connector	1		N15N450-200022-002
4	N30N450-200003-000	直通接头 Connector	1		N30N450-200003-000
5	JB982-77	垫圈22 Washer 22	1		
6	1.5N4.5H-201000A	硬管接头 Connector	1		1.5N4.5H-201000A
7	GB70-85	螺钉M10×35 screw M10×35	1		
8	GB93-87	垫圈10 Washer 10	2		
9	GB97.1-85	垫圈10 Washer 10	2		
10	GB6170-86	螺母M10 Nut M10	1		
11	1.5N4.5H-200002A	胶管接头 Connector	1		1.5N4.5H-200002A
12	1.5M3H-701000	单向限速阀 Speed limiting valve	1		1.5M3H-701000
13	GB1235-76	O形密封圈24×2.4 O-ring 24×2.4	1		
14	1.5N4.5H-202000	钢油管 Oil pipe	1		1.5N4.5H-202000
15	3N4.5H-200001	直通管接头 Connector	2		3N4.5H-200001

图 28
Fig.28

油路系统
Mast piping

3级门架 Triplex
1-1.8t 2010.03-

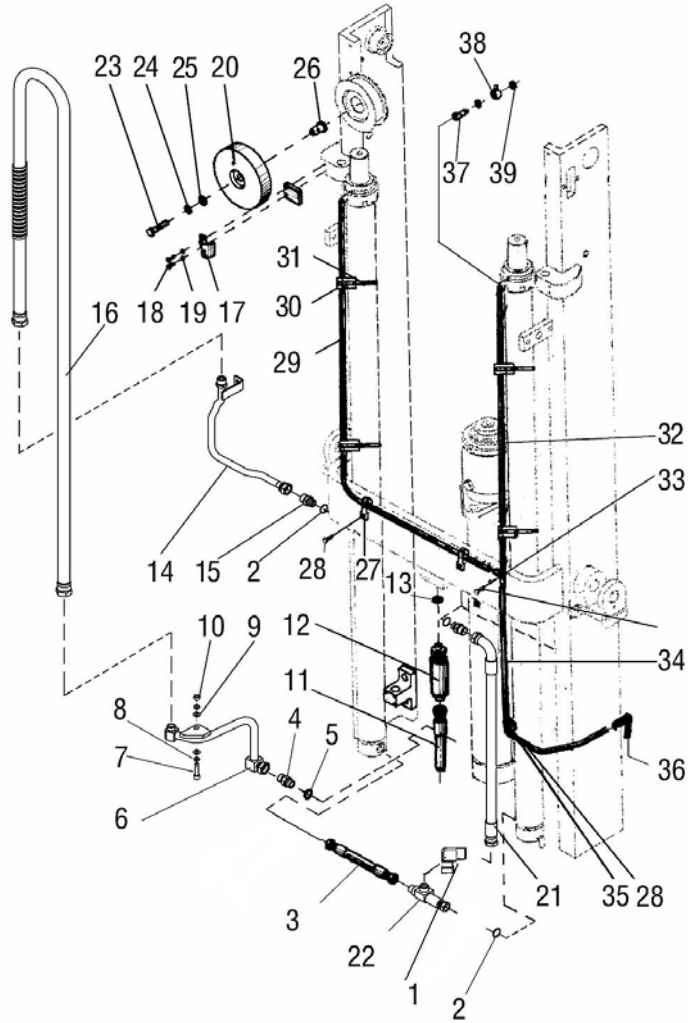


序号 Item No.	代号 Part No.	名称 Description	数量 Q'ty	备注或适用 车型 Remarks or Series No	物料码 Code No.
16	1.5N4.5H-200015A	胶管接头 Connector	1	See OP.Parts	1.5N4.5H-200015A
17	1.5N4.5H-200004	管夹 Clip	1		1.5N4.5H-200004
18	GB5783-86	螺栓M6×10 Bolt M16×10	6		
19	GB93-87	垫圈6 Washer 6	9		
20	1.5N4.5H-200005	滑轮 Pulley wheel	1	-2007.9	1.5N4.5H-200005
	1.5N4.5H-200005A	滑轮 Pulley wheel	1	2007.10-	1.5N4.5H-200005A
21	2.5N4.5H-200008A	胶管接头 Connector	1		2.5N4.5H-200008A
22	RC25U300-704000-000	三通接头 Connector	1		RC25U300-704000-000
23	GB5782-86	螺栓M14×55 Bolt M14×55	1		
24	GB93-87	垫圈14 Washer 14	1		
25	GB97.1-85	垫圈14 Washer 14	1		
26	N15N450-200021-000	轴套 Shaft sleeve	1		N15N450-200021-000
27	S16M300-700003-000	管夹 Clip	2		S16M300-700003-000
28	N30M300-003000-000	螺栓M8×1.25×16 Bolt M8×1.25×16	3		N30M300-003000-000
29	N15N450-200008-000	回油管 φ 14.5/φ 9.5 Return oil pipe	1	See OP.Parts L=1210	N15N450-200008-000

图 28
Fig.28

油路系统
Mast piping

3 级门架 Triplex
1-1.8t 2010.03-



序号 Item No.	代号 Part No.	名称 Description	数量 Q'ty	备注或适用 车型 Remarks or Series No	物料码 Code No.
30	N30M300-700002-000	镶边 Band	4		N30M300-700002-000
31	GT-3001-G00	通用尼龙扎带 Clamp-band	4		GT-3001-G00
32	N15N450-200011-000	回油管 $\phi 14.5/\phi 9.5$ Return oil pipe	1	See OP.Parts L=770	N15N450-200011-000
33	N30M300-700005-000	三通接头 Connector	1		N30M300-700005-000
34	N15N450-200015-000	回油管 $\phi 14.5/\phi 9.5$ Return oil pipe	1	L=1930	N15N450-200015-000
35	N30M300-700008-000	管夹 Clip	1		N30M300-700008-000
36	N15M300-700010-000	接头 Connector	1		N15M300-700010-000
37	3-60-00-30A	铰接螺栓 Bolt	2		3-60-00-30A
38	3-60-00-27A	低压接头 connector	2		3-60-00-27A
39	3-10-20-07	垫圈 Washer	2		3-10-20-07

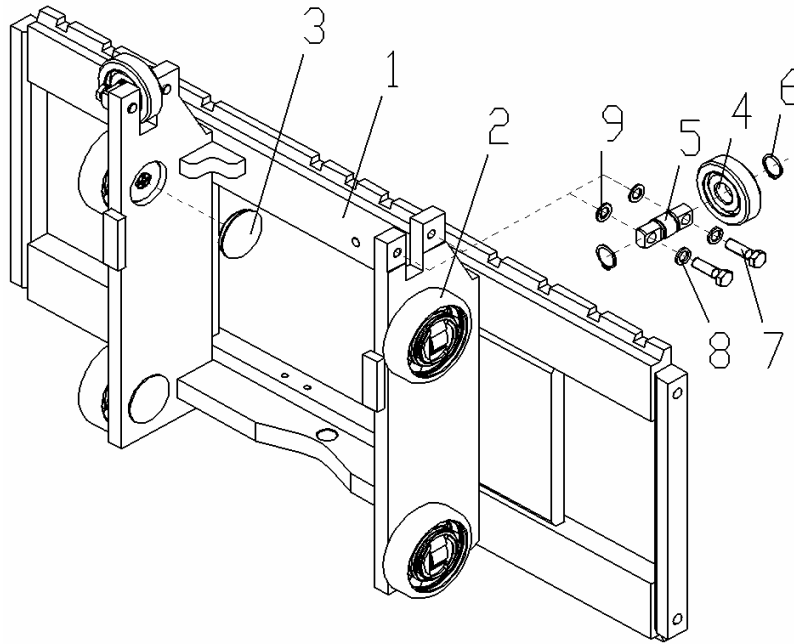
附表

<Optional Parts>

Item No.	16	29		32	
Lift Height	代号 Part No.	代号 Part No.	名称 Description	代号 Part No.	名称 Description
4000	1.5N4H-200015A	N15N400-200008-000	回油管 $\phi 14.5/\phi 9.5 \times 1085$	N15N400-200011-000	回油管 $\phi 14.5/\phi 9.5 \times 645$
4300	1.5N4.3H-200015A	N15N430-200008-000	回油管 $\phi 14.5/\phi 9.5 \times 1185$	N15N430-200011-000	回油管 $\phi 14.5/\phi 9.5 \times 745$
4500	(STD)	(STD)	(STD)	(STD)	(STD)
4800	1.5N4.8H-200015A	N15N480-200008-000	回油管 $\phi 14.5/\phi 9.5 \times 1310$	N15N480-200011-000	回油管 $\phi 14.5/\phi 9.5 \times 870$
5000	1.5N5H-200015A	N15N500-200008-000	回油管 $\phi 14.5/\phi 9.5 \times 1360$	N15N500-200011-000	回油管 $\phi 14.5/\phi 9.5 \times 920$
5500	1.5N5.5H-200015A	N15N550-200008-000	回油管 $\phi 14.5/\phi 9.5 \times 1535$	N15N550-200011-000	回油管 $\phi 14.5/\phi 9.5 \times 1095$
6000	1.5N6H-200015A	N15N600-200008-000	回油管 $\phi 14.5/\phi 9.5 \times 1760$	N15N600-200011-000	回油管 $\phi 14.5/\phi 9.5 \times 1320$

图 29 货叉架总成
Fig. 29 Fork carriage assy'

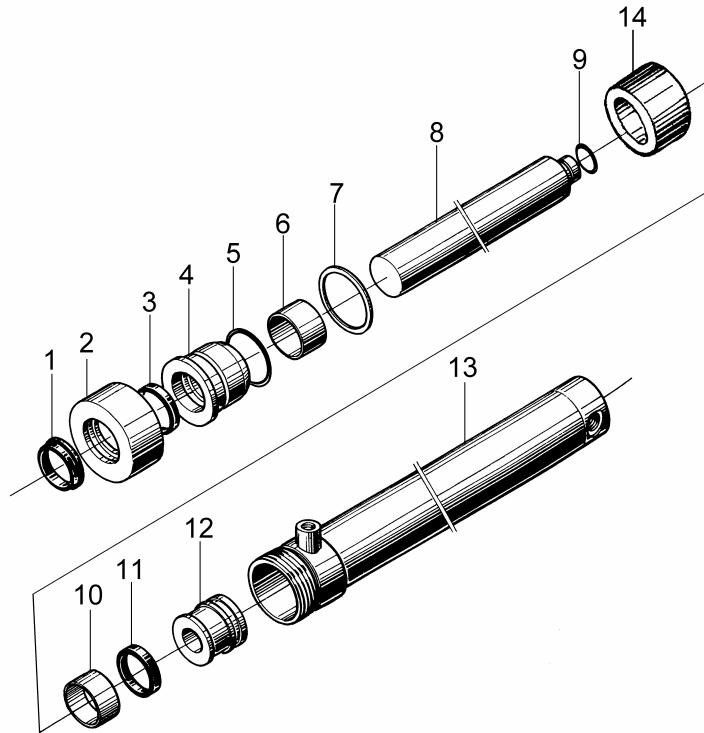
3 级门架 Triplex
1-1.8t



序号 Item No.	代号 Part No.	名称 Description	数量 Q'ty	备注或适用 车型 Remarks or Series No	物料码 Code No.
1	N15N450-301000-000	货叉架体 Fork carriage	1	1-1.5t	N15N450-301000-000
	N18N450-301000-000	货叉架体 Fork carriage	1	1.8t	N18N450-301000-000
2	760211A-G00	复合滚轮 $\phi 113.2$ Roller $\phi 113.2$	4		760211A-G00
3	N15M300-300005-G00	橡胶盖 Rubber cover	4		N15M300-300005-G00
4	80605K-G00	侧向滚轮 $25 \times 70 \times 17$ Side roller $25 \times 70 \times 17$	2		80605K-G00
5	1.5M3H-300001	侧滚轮轴 Side roller shaft	2		1.5M3H-300001
6	GB894.1-86	挡圈 25 Snap ring 25	4		
7	GB5782-86	螺栓 M12 \times 40 Bolt M12 \times 40	4		
8	GB93-87	垫圈 12 Washer 12	4		
9	3U3A-100002	调整垫片 Washer	4		3U3A-100002

图 30 左右升降油缸
Fig.30 Lift cylinder, left & ring

3 级门架 Triplex
1-1.8t -2006.9



序号 Item No.	代号 Part No.	名称 Description	数量 Q'ty	备注或适用 车型 Remarks or Series No	物料码 Code No.
A	1.5M3H-400000	右升降油缸 Lift cylinder,ring	1	See OP.Parts	1.5M3H-400000
B	1.5M3H-500000	左升降油缸 Lift cylinder,left	1	See OP.Parts	1.5M3H-500000
1	CL0066C1-G00	LBH防尘圈d35 LBH-dustproof ring d35	1		CL0066C1-G00
2	1.5M3H-400001A	缸盖 Cap	1		1.5M3H-400001A
3	FU0424K0-G00	ISI密封圈d35 ISI-seal ring d35	1		FU0424K0-G00
4	1.5M3H-400002	导向套 Guide sleeve	1		1.5M3H-400002
5	GB1235-76	O形密封圈50×3.5 O-ring 50×3.5	1		
6	SF-1-3530-G00	复合衬套3530 Combination bush	1		SF-1-3530-G00
7	1.5M3H-400007	调整垫圈 Ring	1		1.5M3H-400007
8	1.5M3H-400006	活塞杆 Piston rod	1	See OP.Parts	1.5M3H-400006
9	1.5M3H-400005	钢丝挡圈 Ring	1		1.5M3H-400005
10	1.5M3H-400004	支承环 Support ring	1		1.5M3H-400004
11	FU0563L0-G00	OSI密封圈D45 OSI-seal ring D45	1		FU0563L0-G00
12	1.5M3H-400003	活塞 Piston	1		1.5M3H-400003
13	1.5M3H-401000	右缸筒 Cylinder body,right	1	See OP.Parts	1.5M3H-401000

附表

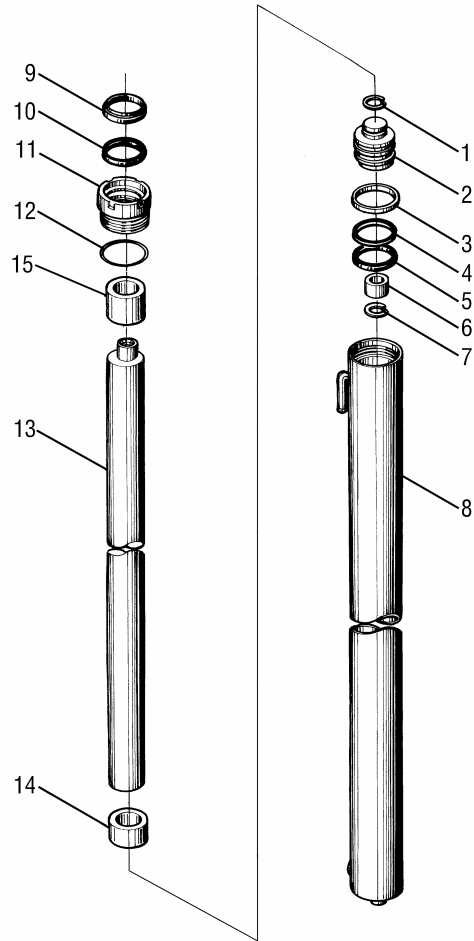
<Optional Parts>

序号 Item No.	A	B	8	13(right)	13(left)	14
起升高度 Lift Height	代号 Part No	代号 Part No	代号 Part No.	代号 Part No.	代号 Part No.	代号 Part No.
4000	1.5N4H-400000	1.5N4H-500000	1.5N4H-400006	1.5N4H-401000	1.5N4H-501000	Without part 14
4300	1.5N4.3H-400000	1.5N4.3H-500000	1.5N4.3H-400006	1.5N4.3H-401000	1.5N4.3H-501000	Without part 14
4500	(STD)	(STD)	(STD)	(STD)	(STD)	Without part 14
4800	1.5N4.8H-400000	1.5N4.8H-500000	1.5N4.8H-400006	1.5N4.8H-401000	1.5N4.8H-501000	Without part 14
5000	1.5N5H-400000	1.5N5H-500000	1.5N5H-400006	1.5N5H-401000	1.5N5H-501000	Without part 14
5500	1.5N5.5H-400000	1.5N5.5H-500000	1.5N5.5H-400006	1.5N5.5H-401000	1.5N5.5H-501000	Without part 14
6000	1.5N6H-400000	1.5N6H-500000	1.5N6H-400006	1.5N6H-401000	1.5N6H-501000	1.5N6H-400001

图 31
Fig.31

左右升降油缸
Lift cylinder,left & ring

3 级门架 Triplex
1-1.8t —2010.02



序号 Item No.	代号 Part No.	名称 Description	数量 Q'ty	备注或适用 车型 Remarks or Series No	物料码 Code No.
A	1.5M3H-500000A	左升降油缸 Lift cylinder,left	1		1.5M3H-500000A
B	1.5M3H-400000A	右升降油缸 Lift cylinder,right	1		1.5M3H-400000A
1	GB895.1-86	挡圈21 Snap ring	1		
2	N15M300-400002-W00	活塞 Piston	1		N15M300-400002-W00
3	N15M300-400003-W00	支承圈 Ring	1		N15M300-400003-W00
4	N15M300-400004-W00	保护圈 Ring	1		N15M300-400004-W00
5	FU0563L0-G00	OSI密封圈D45 OSI-seal ring	1		FU0563L0-G00
6	N15M300-400005-W00	阀套 Sleeve	1		N15M300-400005-W00
7	GB895.1-86	挡圈 25 Snap ring 25	1		
8	1.5M3H*501000A	左缸体 Left cylinder body	1	See OP.Parts	1.5M3H*501000A
	1.5M3H*401000A	右缸体 Right cylinder body	1	See OP.Parts	1.5M3H*401000A
9	FD2041A0-G00	DKI防尘圈d35 Dustproof ring	1		FD2041A0-G00
10	FU0424K0-G00	ISI密封圈d35 ISI-seal ring	1		FU0424K0-G00
11	N15M300-400006-W00	导向套 Guide bush	1		N15M300-400006-W00
12	GB3452.1-82	O形密封圈46.2×2.65 O-ring	1		

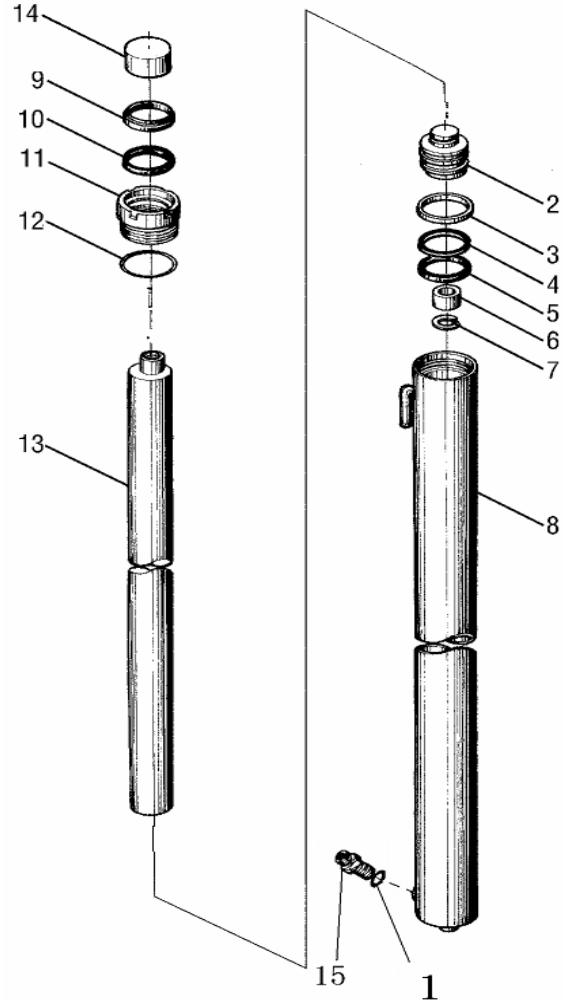
附表

<Optional Parts>

序号 Item No.	A	B	8(left)	8(right)	13	14
起升高度 Lift Height	代号 Part No	代号 Part No	代号 Part No.	代号 Part No.	代号 Part No.	代号 Part No.
4000	1.5N4H-500000A	1.5N4H-400000A	1.5N4H-501000A	1.5N4H-401000A	1.5N4H*400006A	Without part 14
4300	1.5N4.3H-500000A	1.5N4.3H-400000A	1.5N4.3H-501000A	1.5N4.3H-401000A	1.5N4.3H*400006A	Without part 14
4500	(STD)	(STD)	(STD)	(STD)	(STD)	Without part 14
4800	1.5N4.8H-500000A	1.5N4.8H-400000A	1.5N4.8H-501000A	1.5N4.8H-401000A	1.5N4.8H*400006A	Without part 14
5000	1.5N5H-500000A	1.5N5H-400000A	1.5N5H-501000A	1.5N5H-401000A	1.5N5H*400006A	Without part 14
5500	1.5N5.5H-500000A	1.5N5.5H-400000A	1.5N5.5H-501000A	1.5N5.5H-401000A	1.5N5.5H*400006A	Without part 14
6000	1.5N6H-500000A	1.5N6H-400000A	1.5N6H-501000A	1.5N6H-401000A	1.5N6H*400006A	1.5N6H-400001

图 32 左右升降油缸
Fig.32 Lift cylinder,left & ring

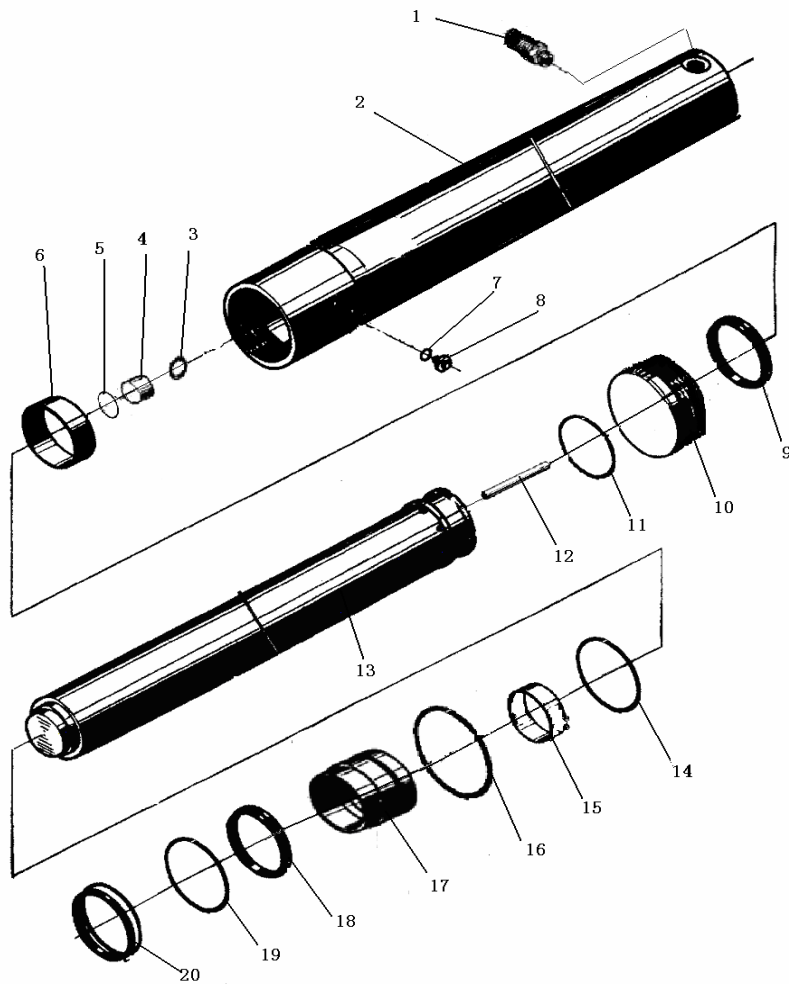
3 级门架 Triplex
1-1.8t 2010.03-



序号 Item No.	代号 Part No.	名称 Description	数量 Q'ty	备注或适用 车型 Remarks or Series No	物料码 Code No.
A	N15N450-50000-001	左升降油缸 Lift cylinder,left	1	2010.03- See OP.Parts	N15N450-50000-001
B	N15N450-400000-001	右升降油缸 Lift cylinder,right	1	2010.03- See OP.Parts	N15N450-400000-001
1	GB1235-76	O形密封圈20×2.4 O-ring 20×2.4			
2	N15M300-400002-W00	活塞 Pisto	1		N15M300-400002-W00
3	N15M300-400003-W00	支承圈 Ring	1		N15M300-400003-W00
4	N15M300-400004-W00	保护圈 Ring	1		N15M300-400004-W00
5	FU0563L0-G00	OSI密封圈D45 OSI-seal ring	1		FU0563L0-G00
6	N15M300-400005-W00	阀套 Sleeve	1		N15M300-400005-W00
7	GB895.1-86	挡圈 24 Snap ring 24	1		
8	N15N450-401000-W01	左缸体 Left cylinder body	1	See OP.Parts	N15N450-401000-W01
	N15N450-501000-W01	右缸体 Right cylinder body	1	See OP.Parts	N15N450-501000-W01
9	FD2041A0-G00	DKI防尘圈 d35 Dustproof ring d35	1		FD2041A0-G00
10	FU0424K0-G00	ISI密封圈 d35 ISI-seal ring d35	1		FU0424K0-G00
11	N15M300-400006-W00	导向套 Guide bush	1		N15M300-400006-W00
12	GB3452.1-82	O形密封圈 46.2×2.65 O-ring 46.2×2.65	1		

图 33 **前升降油缸**
Fig. 33 **Front lift cylinder**

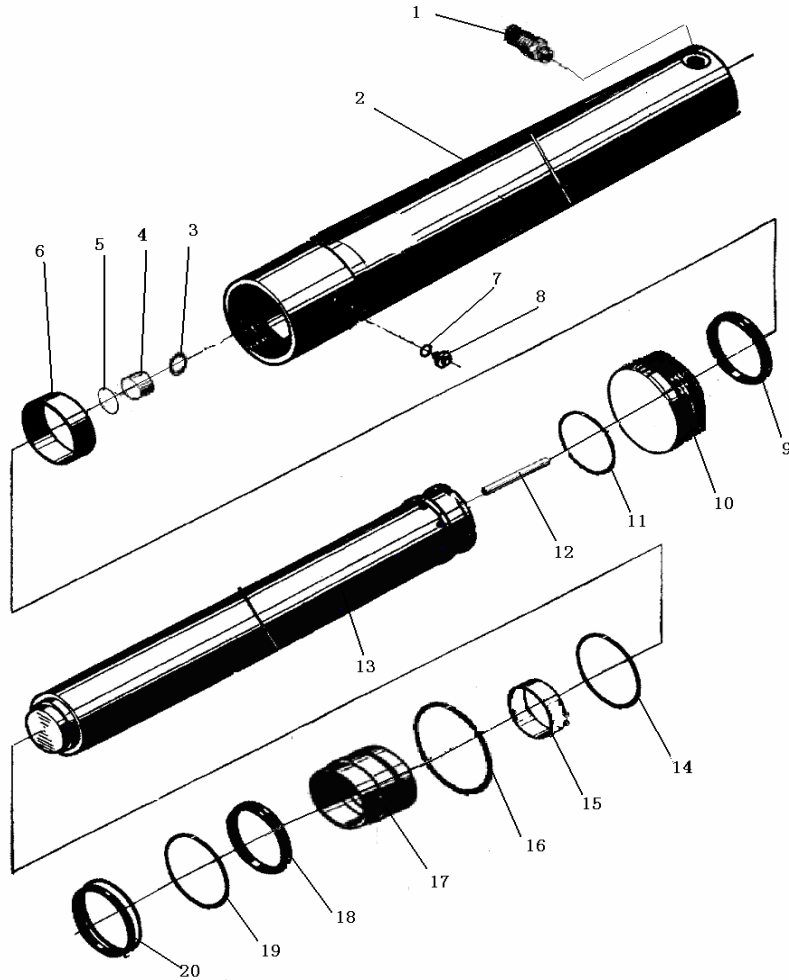
3 级门架 Triplex
1-1.8t 2010.03—



序号 Item No.	代号 Part No.	名称 Description	数量 Q't y	备注或适用 车型 Remarks or Series No	物料码 Code No.
A	N15N450-800000-001	短升降油缸 Lift cylinder, short	1	See OP. Parts	N15N450-800000-001
1	RC25N450-802000-W00	安全阀 safety valve	1		RC25N450-802000-W00
2	N15N450-801000-W01	缸体 Cylinder body	1	See OP. Parts	N15N450-801000-W01
3	GB893.1-86	挡圈 22 Snap shim22	1		
4	RC25N450-803000-W00	单向阀 check valve	1		RC25N450-803000-W00
5	GB1235-76	O 形密封圈 20×2.4 O-ring 20×2.4	1		GB1235-76
6	X15N450-800009-G00	WR 抗磨环 70×6520 75×65×20	1		X15N450-800009-G00
7	JB982-77	垫圈 6 Washer 6	1		
8	GB818-85	螺钉 M6×8 Bolt M6×8	1		
9	PT0300700-T46-G00	格莱圈 D70 greggains circle D70	1		PT0300700-T46-G00
10	X15N450-800004-W00	活塞 Piston	1		X15N450-800004-W00
11	RC25N450-800005-W00	钢丝挡圈 φ3 wire ring φ3	1		RC25N450-800005-W00
12	RC25N450-800006-W00	钢管 steel tube	1		RC25N450-800006-W00
13	N15N450-800001-W01	活塞杆 Piston rod	1	SeeOP.Parts	N15N450-800001-W01
14	GB1235-76	O 形密封圈 70×3.1 O-ring 70×3.1	1		

图 33 前升降油缸
Fig. 33 Front lift cylinder

3 级门架 Triplex
1-1.8t 2010.03-



序号 Item No.	代号 Part No.	名称 Description	数量 Q'ty	备注或适用 车型 Remarks or Series No	物料码 Code No.
15	X15N450-800008-G00	复合衬套 60×35 composite bushing	1		X15N450-80 0008-G00
16	GB1235-76	O 形密封圈 75×3.1 O-ring 75×3.1	1		
17	X15N450-800003-W00	缸盖 Cap	1		X15N450-80 0003-W00
18	FU0694K0-G00	ISI 密封圈 d55 ISI-seal ring d55	1		FU0694K0-G 00
19	X15N450-800002-W00	保护圈 70×60×2 protection ring	1		X15N450-80 0002-W00
20	CL0104C0-G00	LBH 防尘圈 d55 LBH-dustproof ring d55	1		CL0104C0-G 00
<p>注：序号 10, 11, 13, 组装后为不可拆分整体，用户订购时应订购整个组合件。 Notice: No. 10, 11, 13, after the assembly, it's a whole, also, when user order.</p>					

3 级门架 1-1.8t 选配

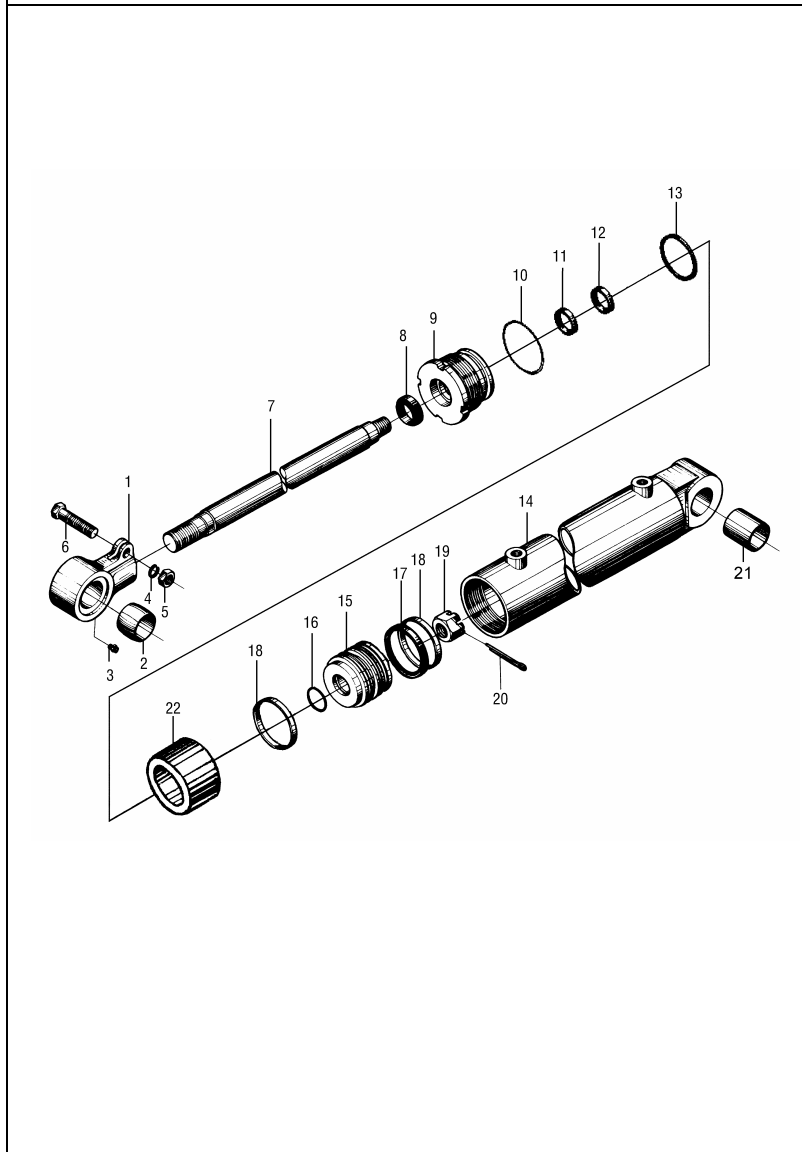
SIMPLEX 1-1.8t <Optional Parts>

序号 Item No	A	2	13
起升高度 Lift Height	代号 Part No	代号 Part No	代号 Part No
3500	N15N350-800000-001	N15N350-801000-W01	N15N350-800001-W01
4000	N15N400-800000-001	N15N400-801000-W01	N15N400-800001-W01
4300	N15N430-800000-001	N15N430-801000-W01	N15N430-800001-W01
4500	(STD)	(STD)	(STD)
4800	N15N480-800000-001	N15N480-801000-W01	N15N480-800001-W01
5000	N15N500-800000-001	N15N500-801000-W01	N15N500-800001-W01
5500	N15N550-800000-001	N15N550-801000-W01	N15N550-800001-W01
6000	N15N600-800000-001	N15N600-801000-W01	N15N600-800001-W01
6500	N15N650-800000-001	N15N650-801000-W01	N15N650-800001-W01
7000	N15N700-800000-001	N15N700-801000-W01	N15N700-800001-W01

图 34
Fig.34

倾斜油缸
Tilt cylinder

3 级门架 Triplex
1-1.8t

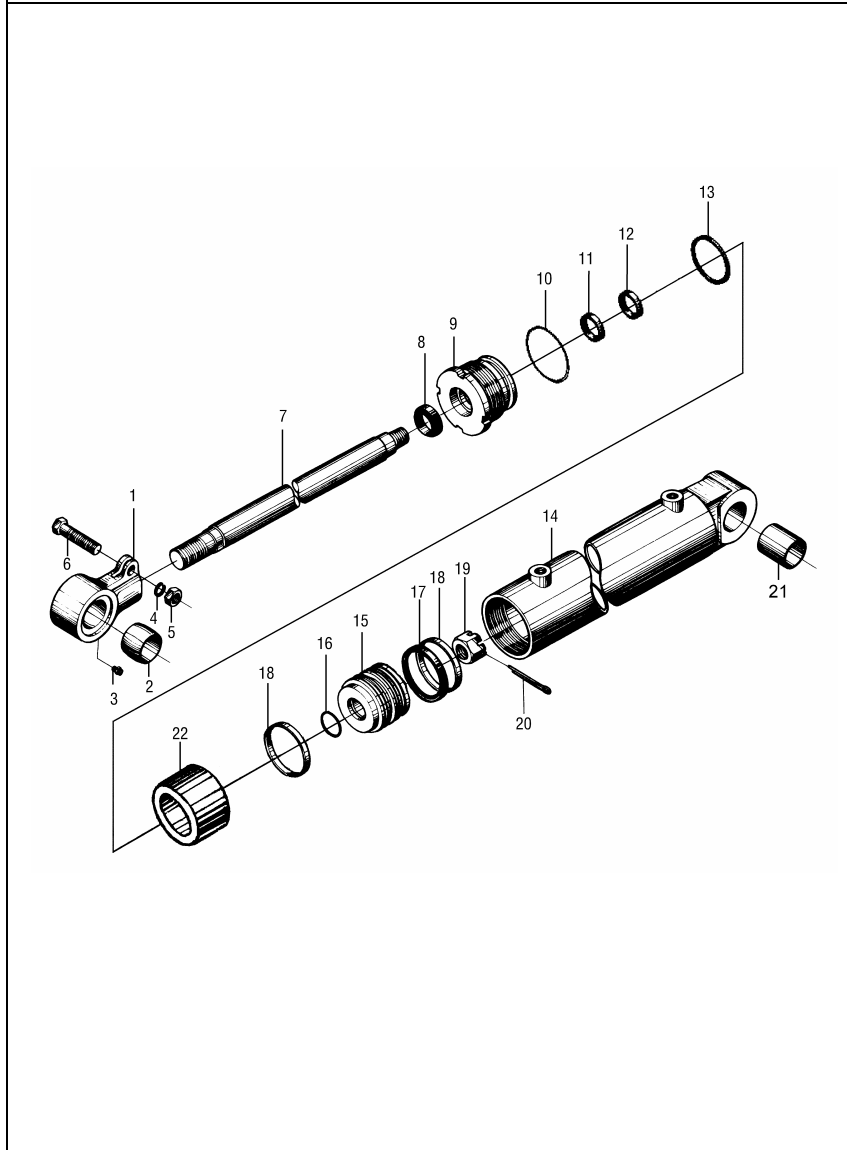


序号 Item No.	代号 Part No.	名称 Description	数量 Q'ty	备注或适用 车型 Remarks or Series No	物料码 Code No.
A	N15N550-600000-002	倾斜油缸 Tilt cylinder	2	See OP.Parts ≥5.5m	N15N550-600000-002
1	N15M300-600001-000	耳环 Ear ring	1		N15M300-600001-000
2	N15M300-600002-000	球面轴承 Bearing	1		N15M300-600002-000
3	GB1152-89	油杯M6 Oil cup M6	1		
4	GB93-87	垫圈14 Washer 14	1		
5	GB6170-86	螺母M14 Nut M14	1		
6	GB5785-86	螺栓M14×1.5×50 Bolt M14×1.5×50	1		
7	N15M430-600001-000	活塞杆 Piston rod	1		N15M430-600001-000
8	d25-G00	防尘圈d25×33×4.5 Dustproof ring	1		d25-G00
9	N15M300-602000-000	导向套 Guide sleeve	1		N15M300-602000-000
10	GB1235-76	O形密封圈70×3.1 O-ring 70×3.1	1		
11	RU3000250-Z20-G00	U形密封圈d25 U-ring d25	1		RU3000250-Z20-G00
12	RS1300250-T46NA-G00	斯特封d25 Seal d25	1		RS1300250-T46NA-G00
13	GB1235-76	O形密封圈65×5.7 O-ring 65×5.7	1		
14	N15M300-601000-000	缸体 Cylinder body	1		N15M300-601000-000

图 34
Fig.34

倾斜油缸
Tilt cylinder

3 级门架 Triplex
1-1.8t



序号 Item No.	代号 Part No.	名称 Description	数量 Q'ty	备注或适用 车型 Remarks or Series No	物料码 Code No.
15	N15M300-600007-000	活塞 Piston	1		
16	GB1235-76	O形密封圈30×3.1 O-ring 30×3.1	1		
17	PT0200650-T46NA-G00	格莱圈D65 Seal D65	1		
18	N15M300-600010-000	支撑环65×60×6.1 Ring65×60×6.1	2		
19	GB9459-88	螺母M20×1.5 Nut M20×1.5	1		
20	GB91-86	销4×40 Pin 4×40	1		
21	SF-1-3045-G00	复合衬套3045 Combination bush	1		
22	N15N550-600002-000	隔套 Bush	1		

附表

<Optional Parts>

序号 Item No.	A
起升高度 Lift Height	代号 Part No.
4000	N15M430-600000-002
4300	N15M430-600000-002
4500	(STD)
4800	N15M430-600000-002
5000	N15M430-600000-002
5500	N15N550-600000-002
6000	N15N550-600000-002
6500	N15N650-600000-002
7000	N15N700-600000-002